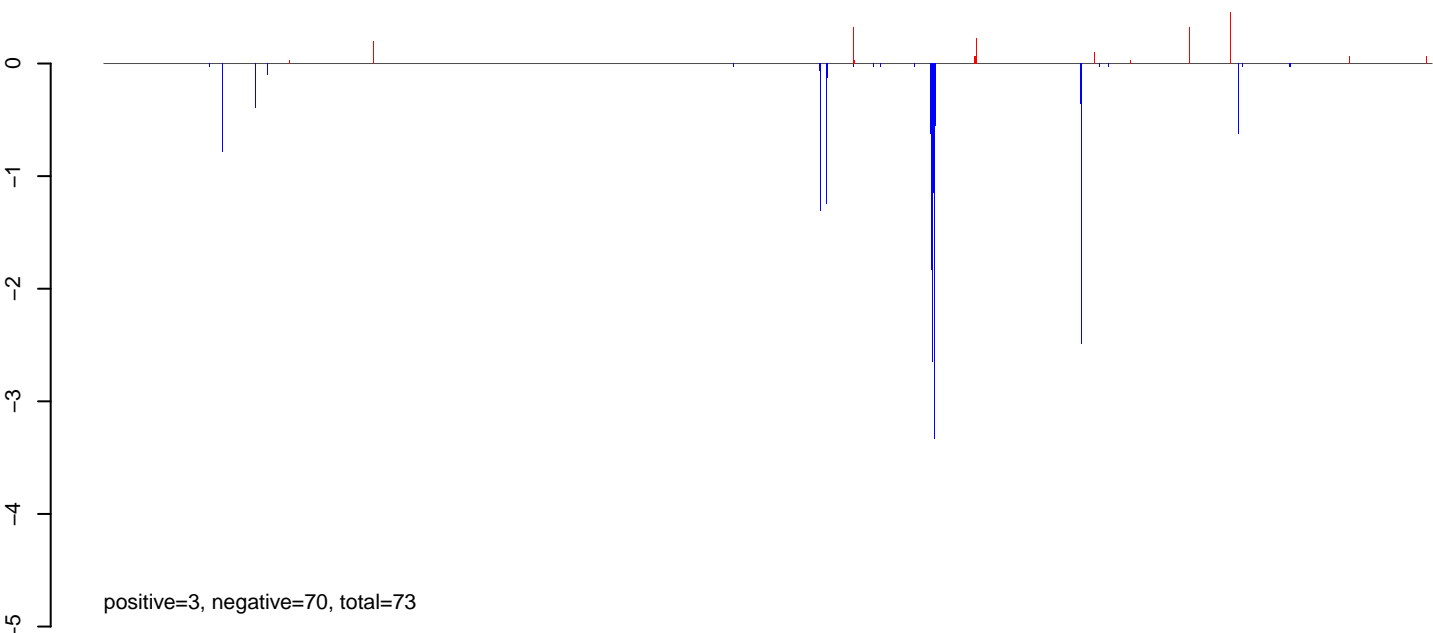
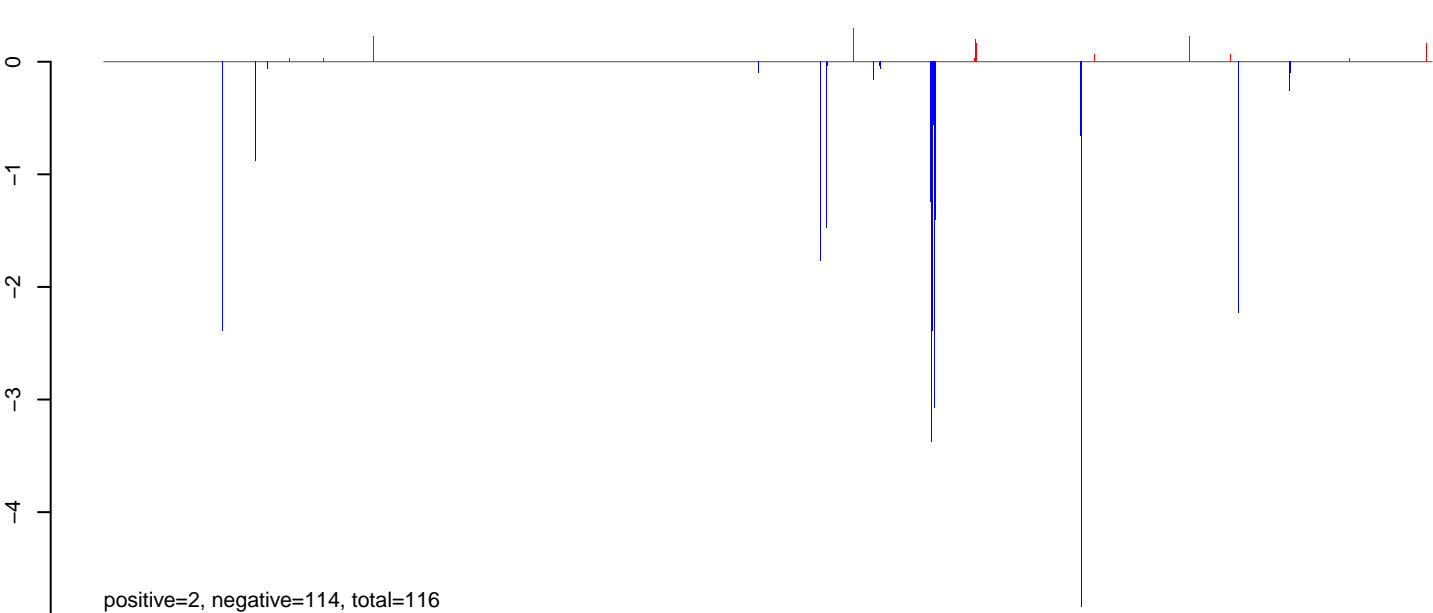


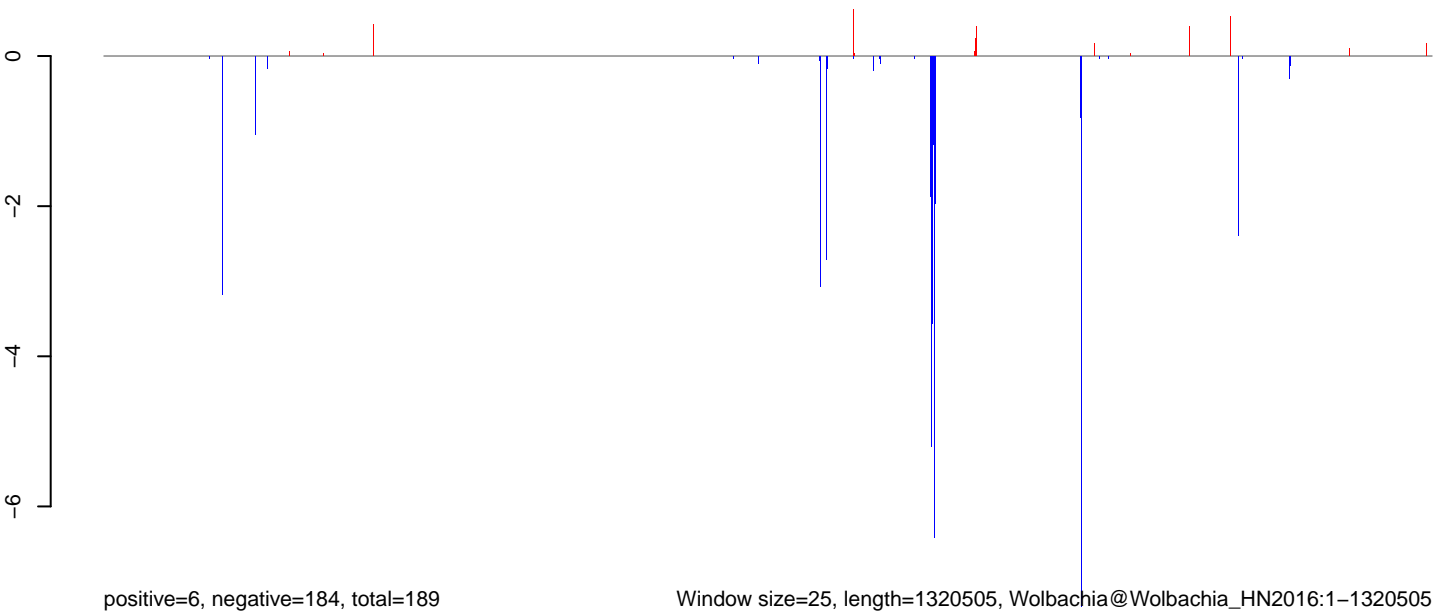
AeAeg_Aag2.TC.Dmem.18_23.rep



AeAeg_Aag2.TC.Dmem.24_35.rep



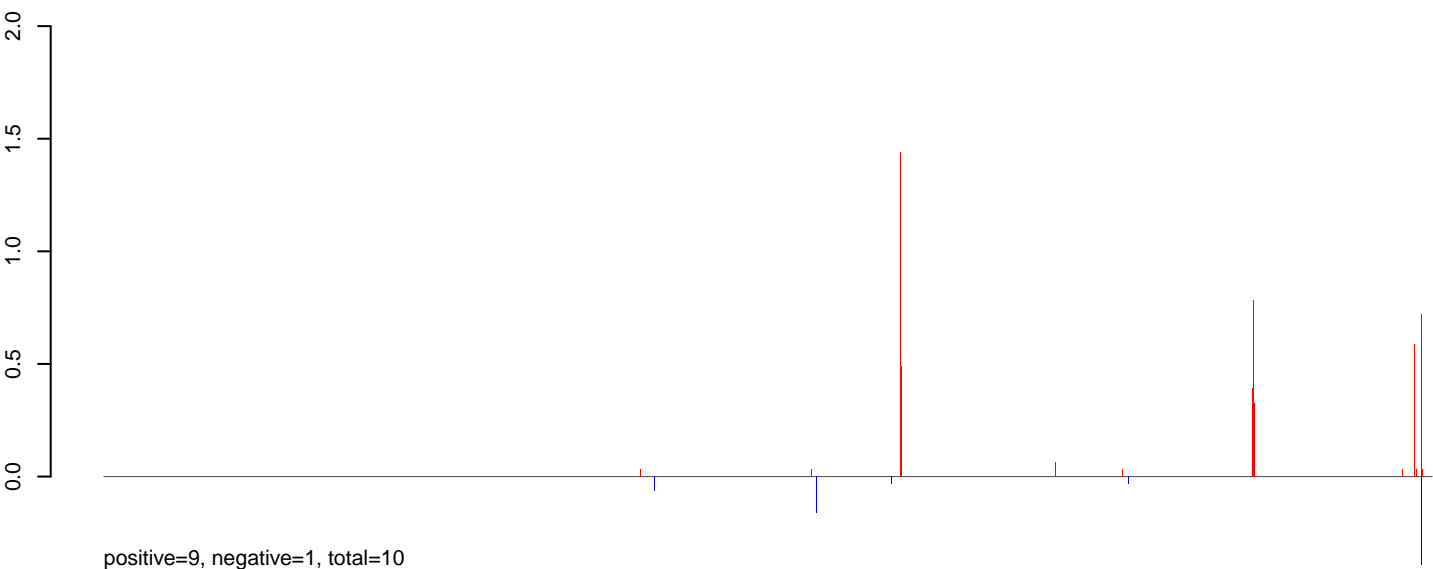
AeAeg_Aag2.TC.Dmem.rep



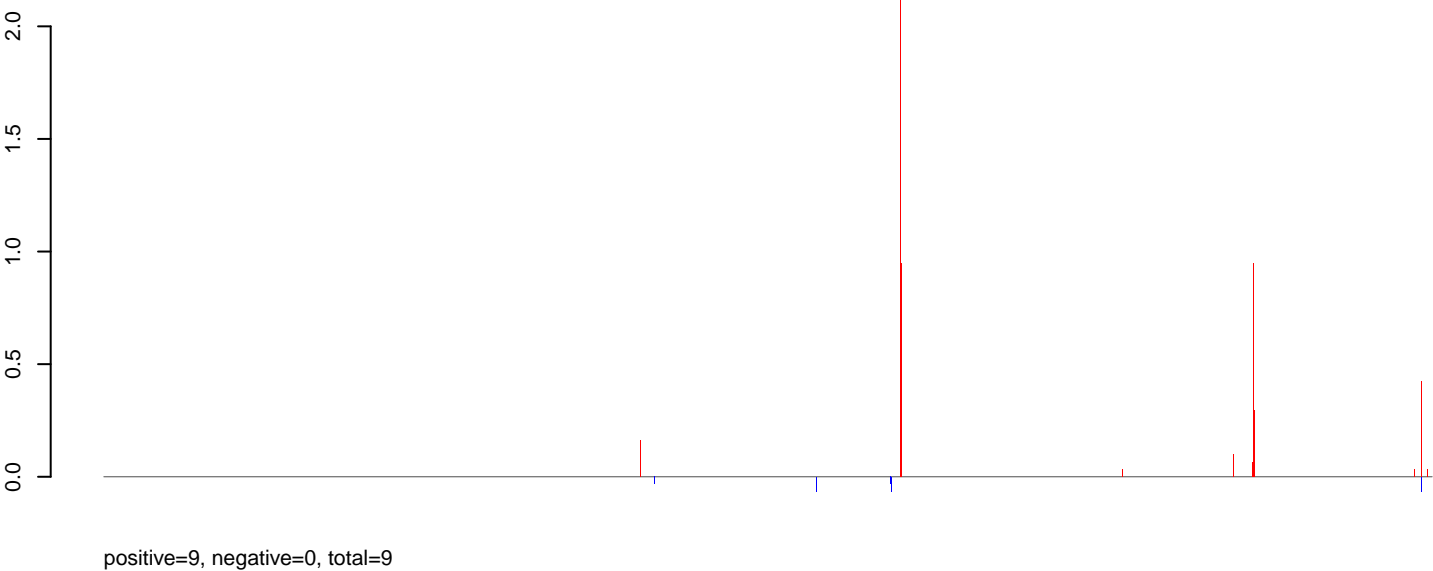
Window size=25, length=1320505, Wolbachia@Wolbachia_HN2016:1-1320505

0 200000 400000 600000 800000 1000000 1200000

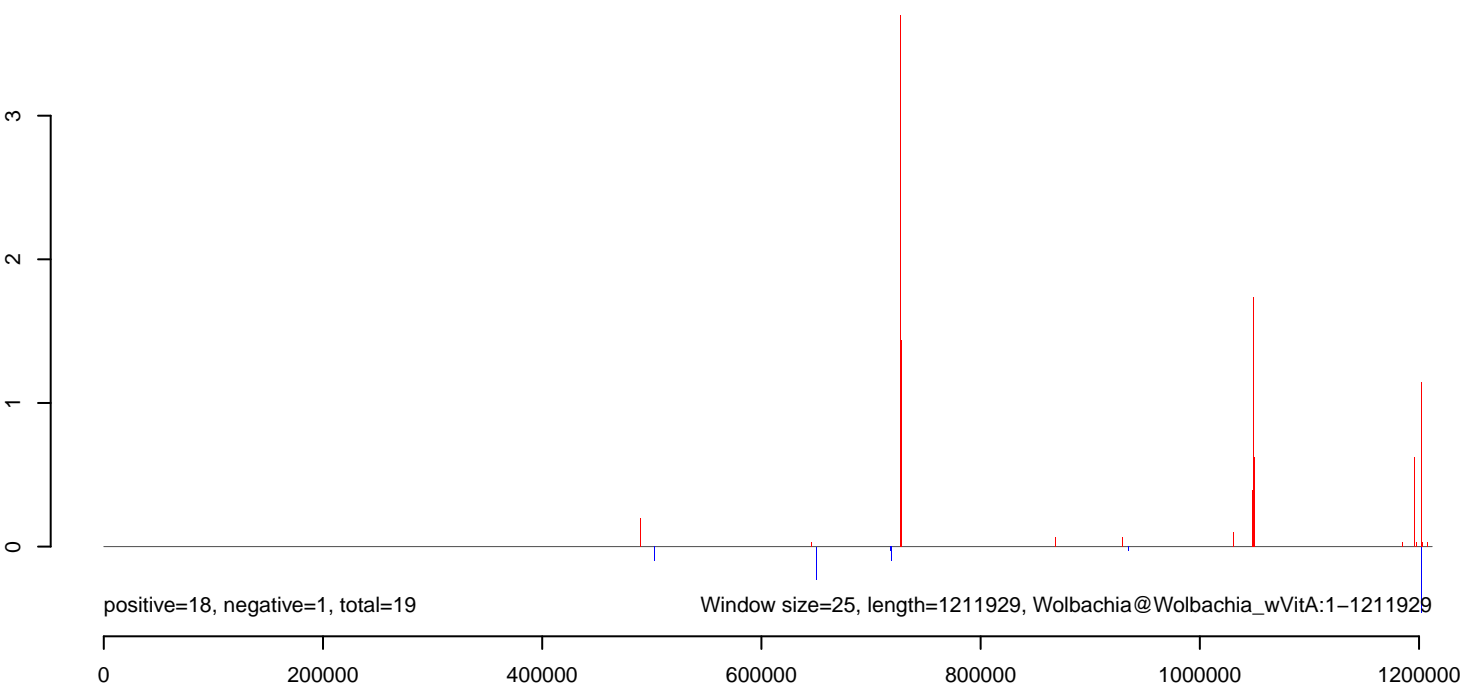
AeAeg_Aag2.TC.Dmem.18_23.rep



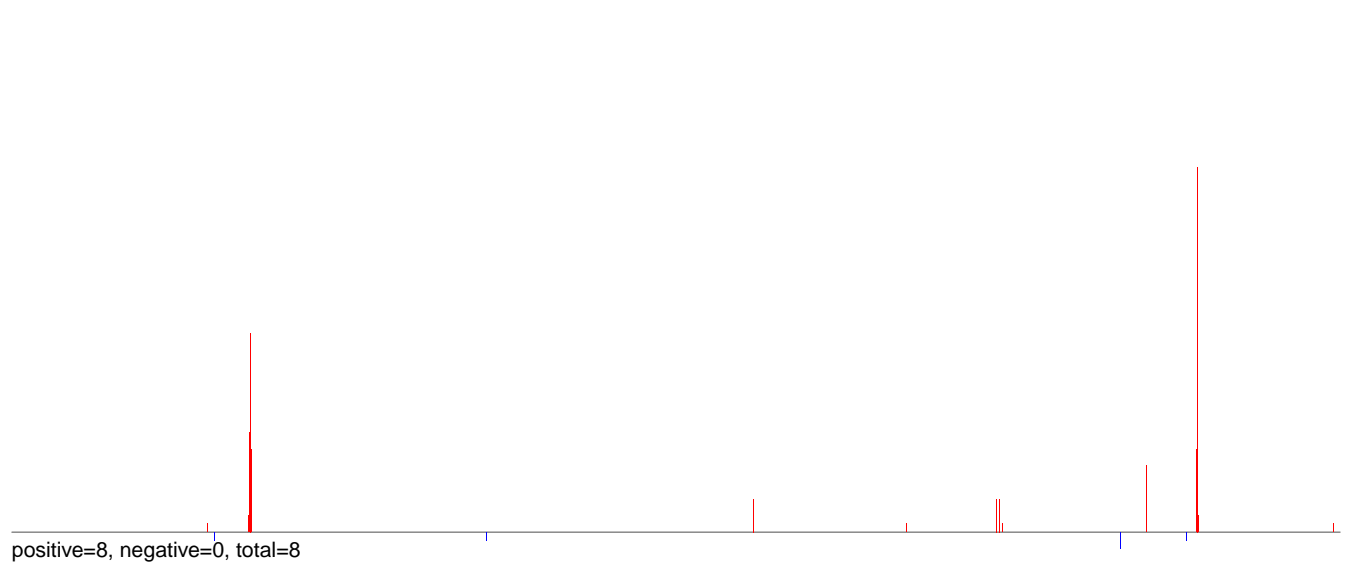
AeAeg_Aag2.TC.Dmem.24_35.rep



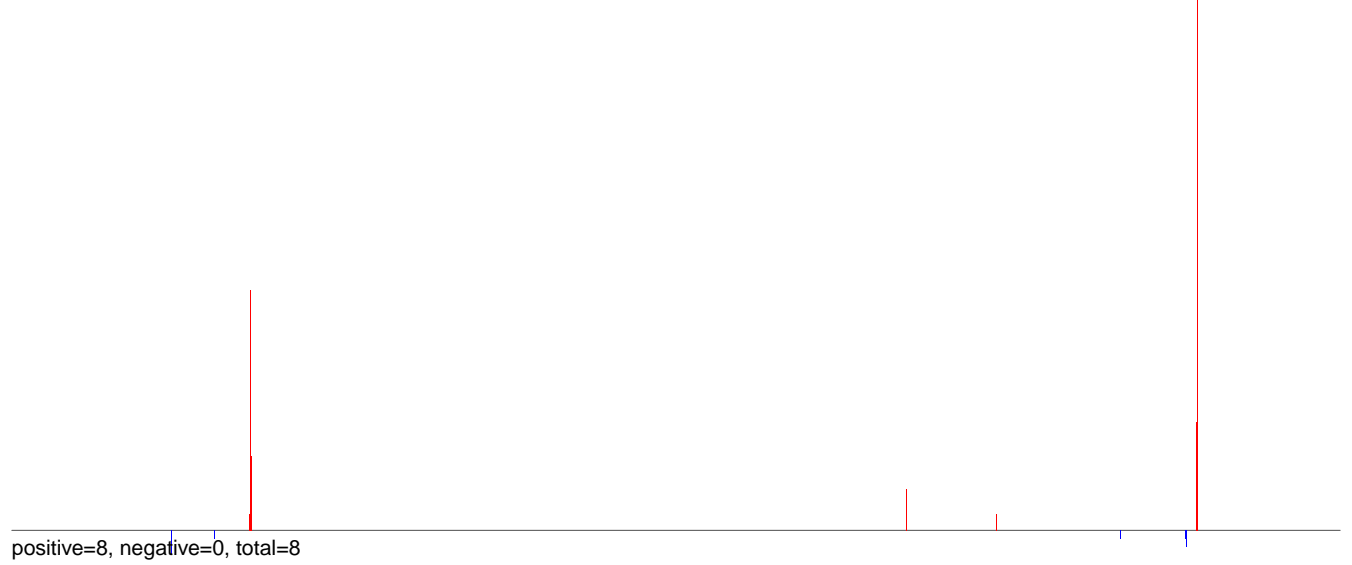
AeAeg_Aag2.TC.Dmem.rep



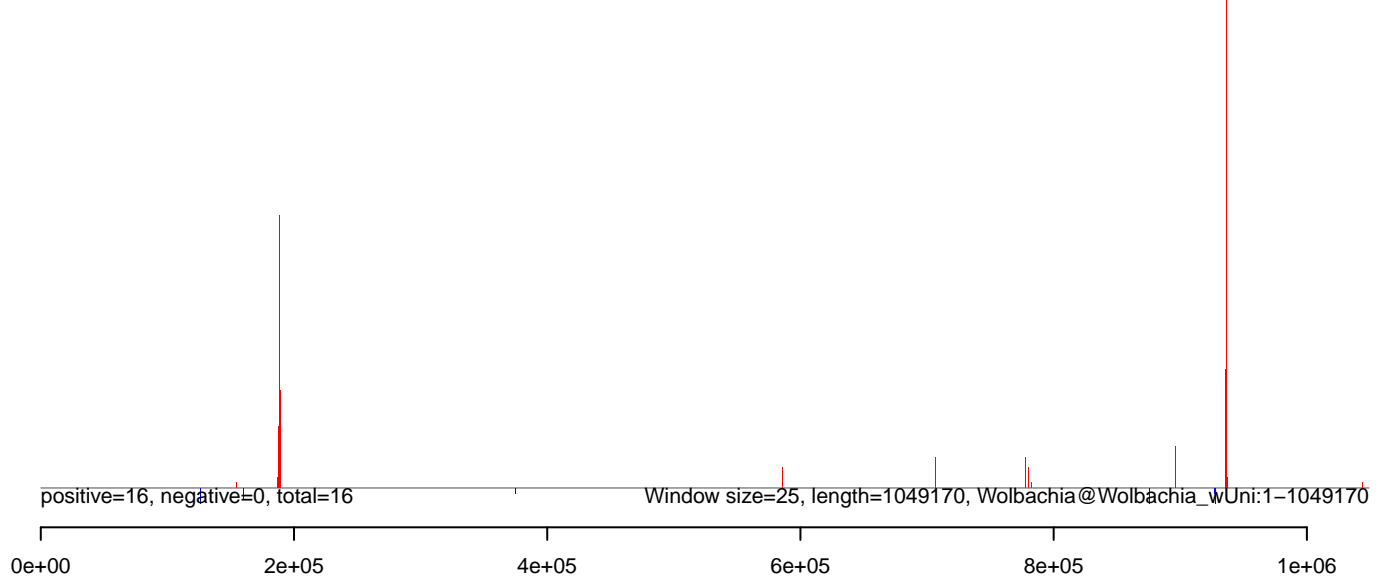
AeAeg_Aag2.TC.Dmem.18_23.rep



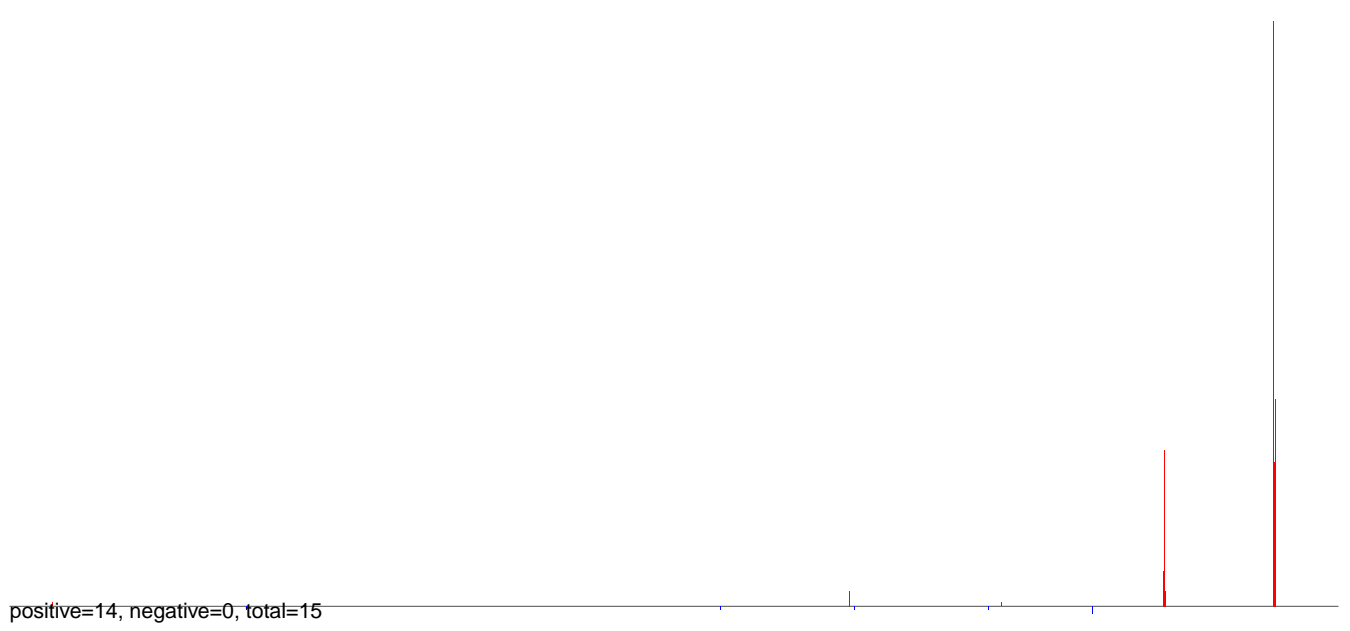
AeAeg_Aag2.TC.Dmem.24_35.rep



AeAeg_Aag2.TC.Dmem.rep



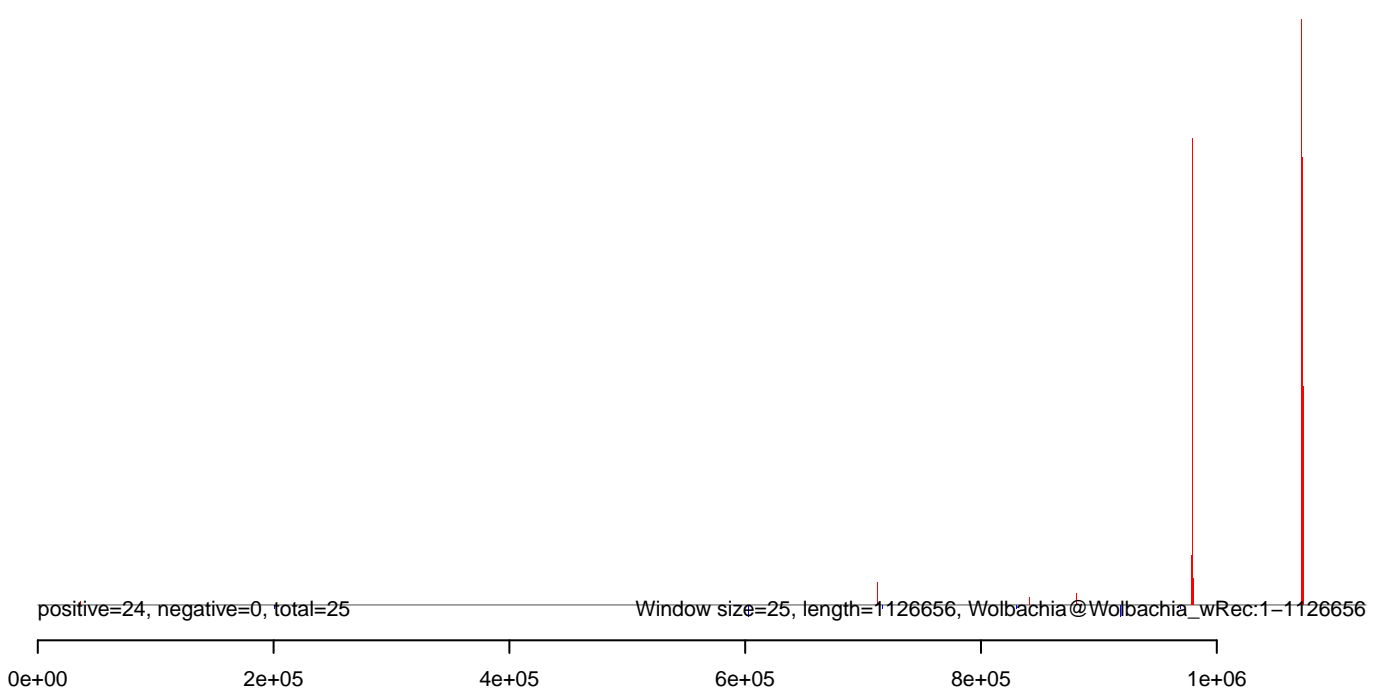
AeAeg_Aag2.TC.Dmem.18_23.rep



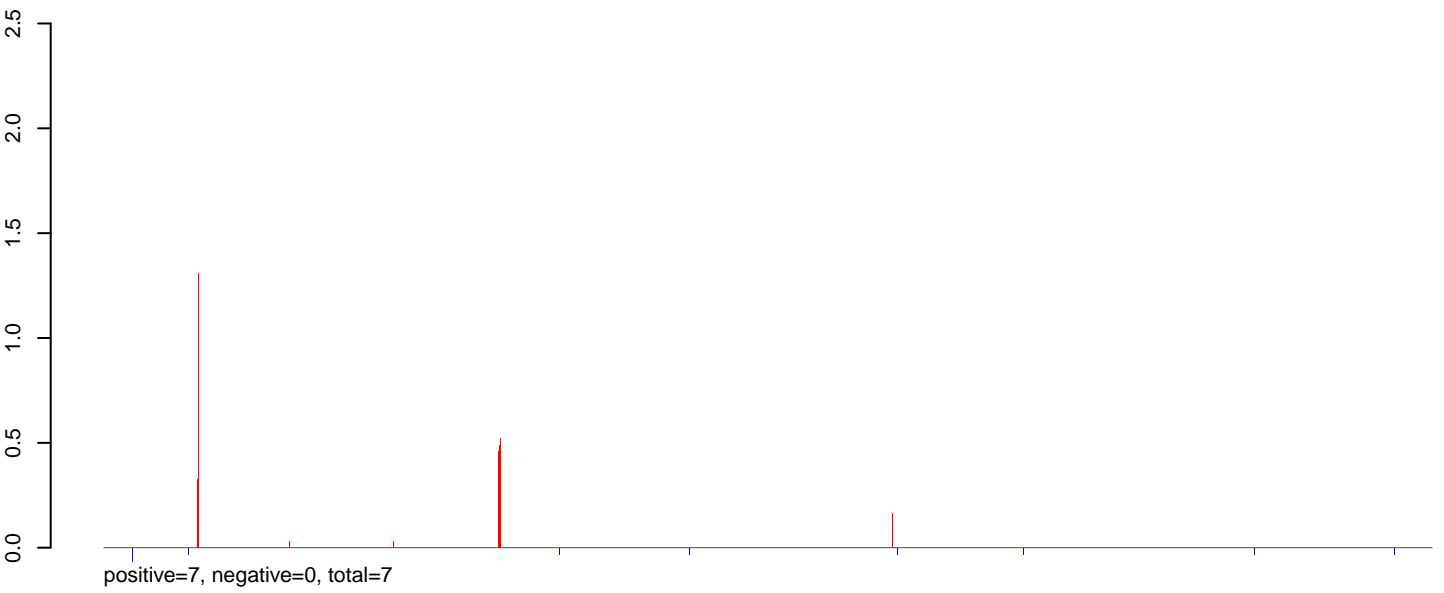
AeAeg_Aag2.TC.Dmem.24_35.rep



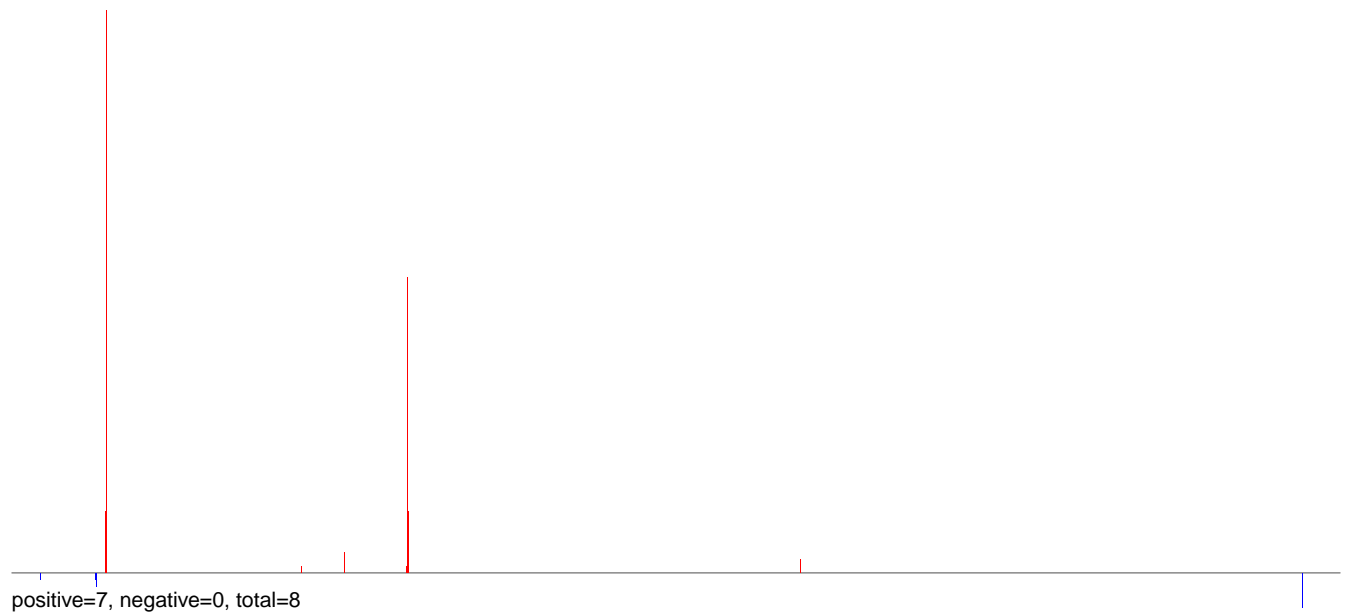
AeAeg_Aag2.TC.Dmem.rep



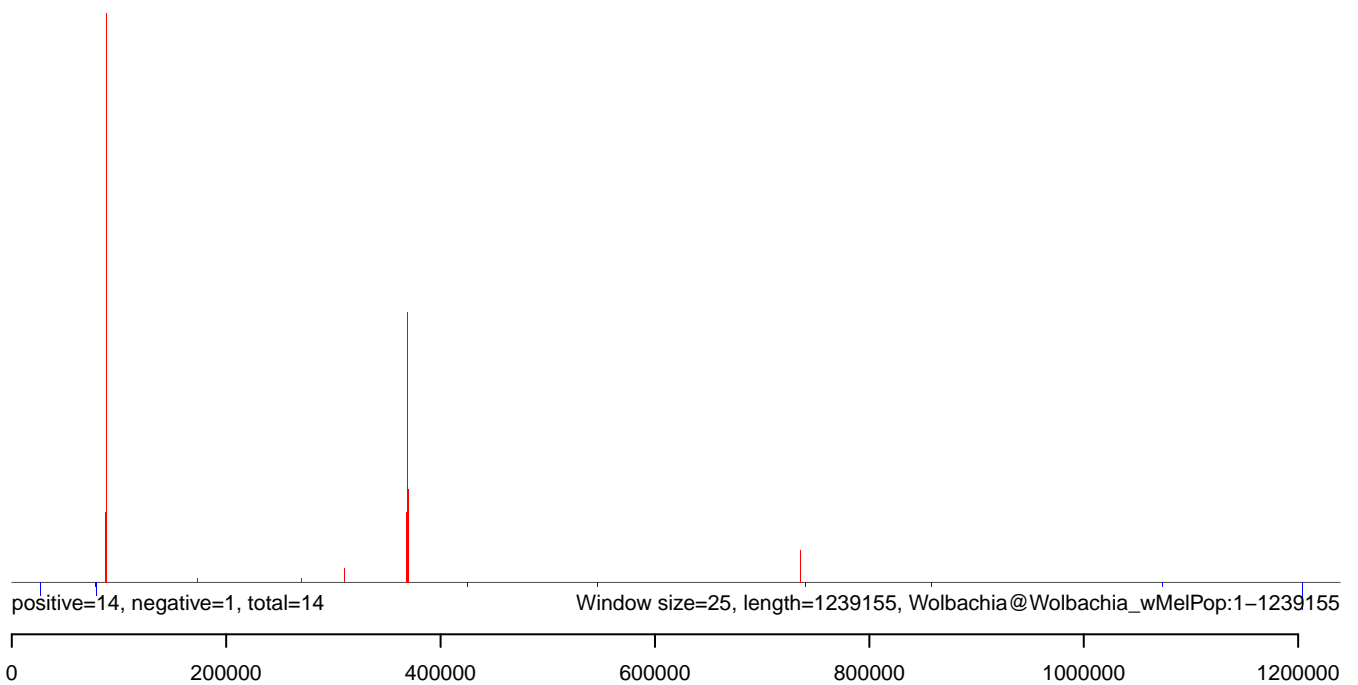
AeAeg_Aag2.TC.Dmem.18_23.rep



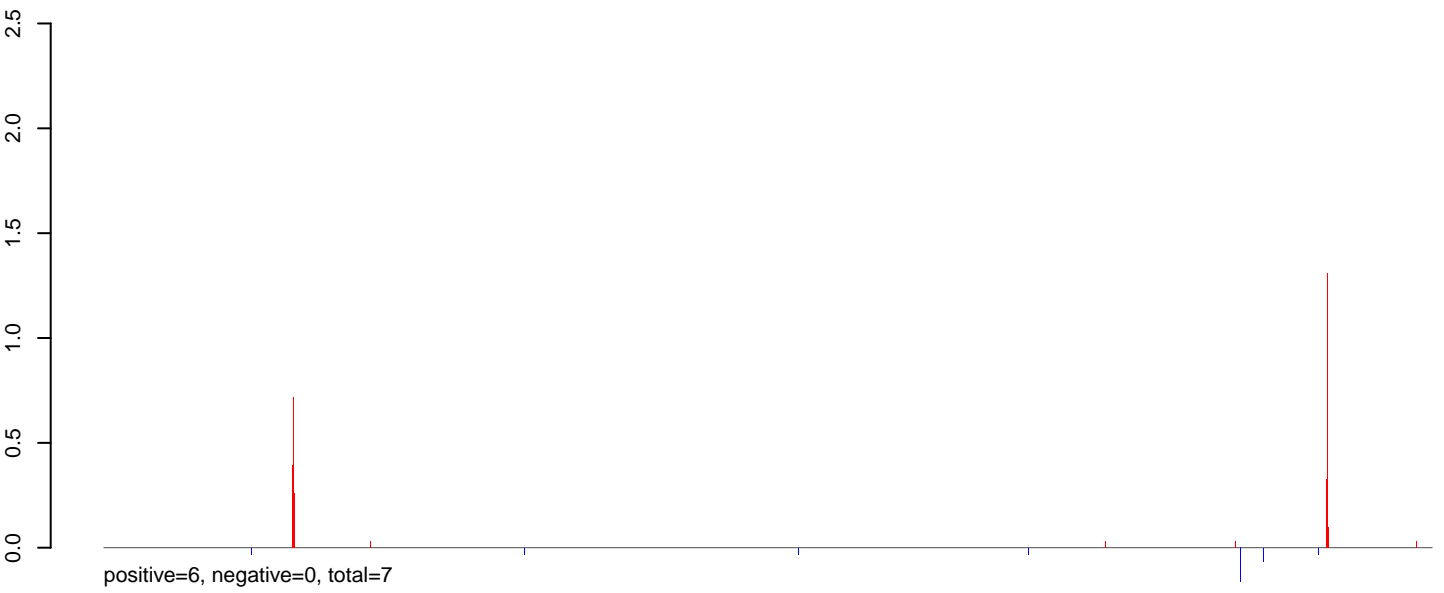
AeAeg_Aag2.TC.Dmem.24_35.rep



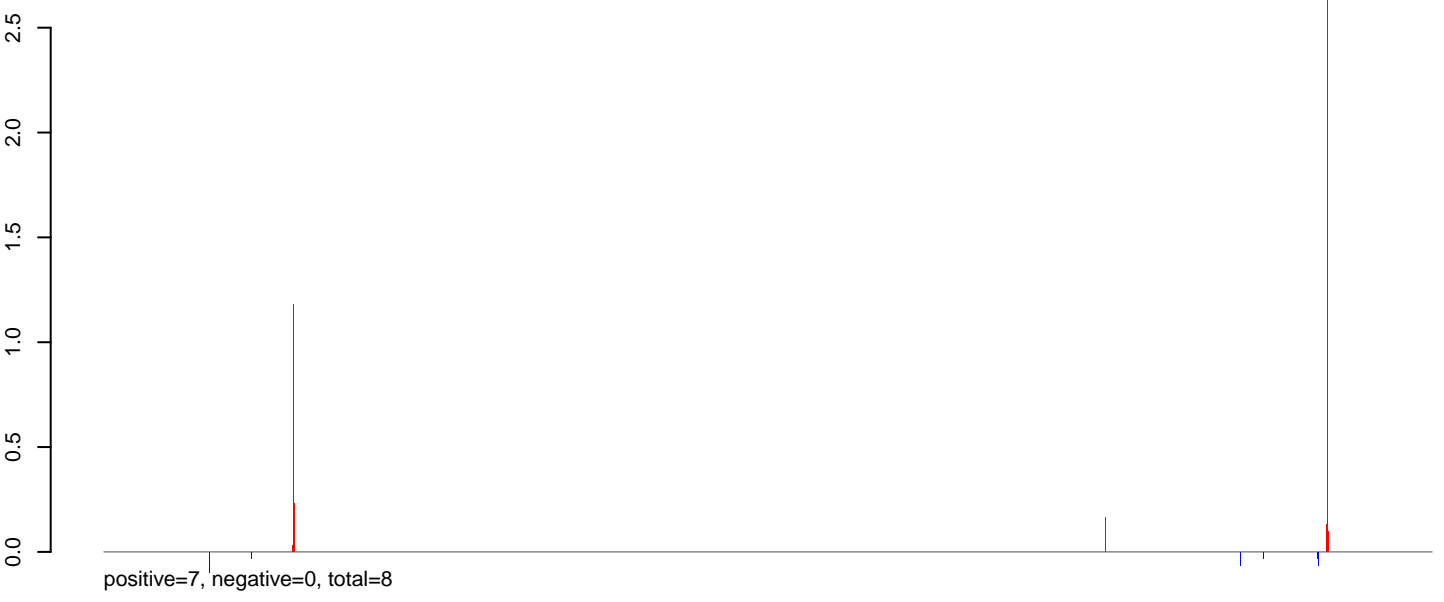
AeAeg_Aag2.TC.Dmem.rep



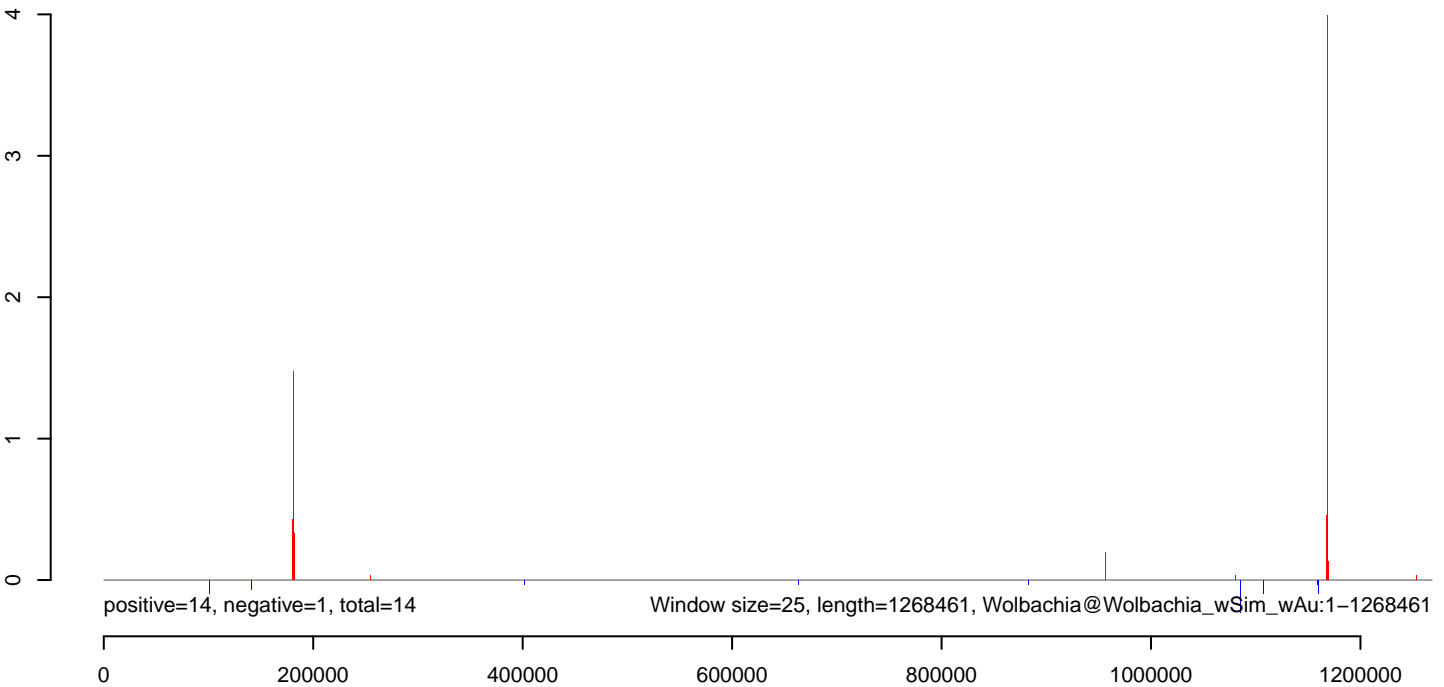
AeAeg_Aag2.TC.Dmem.18_23.rep



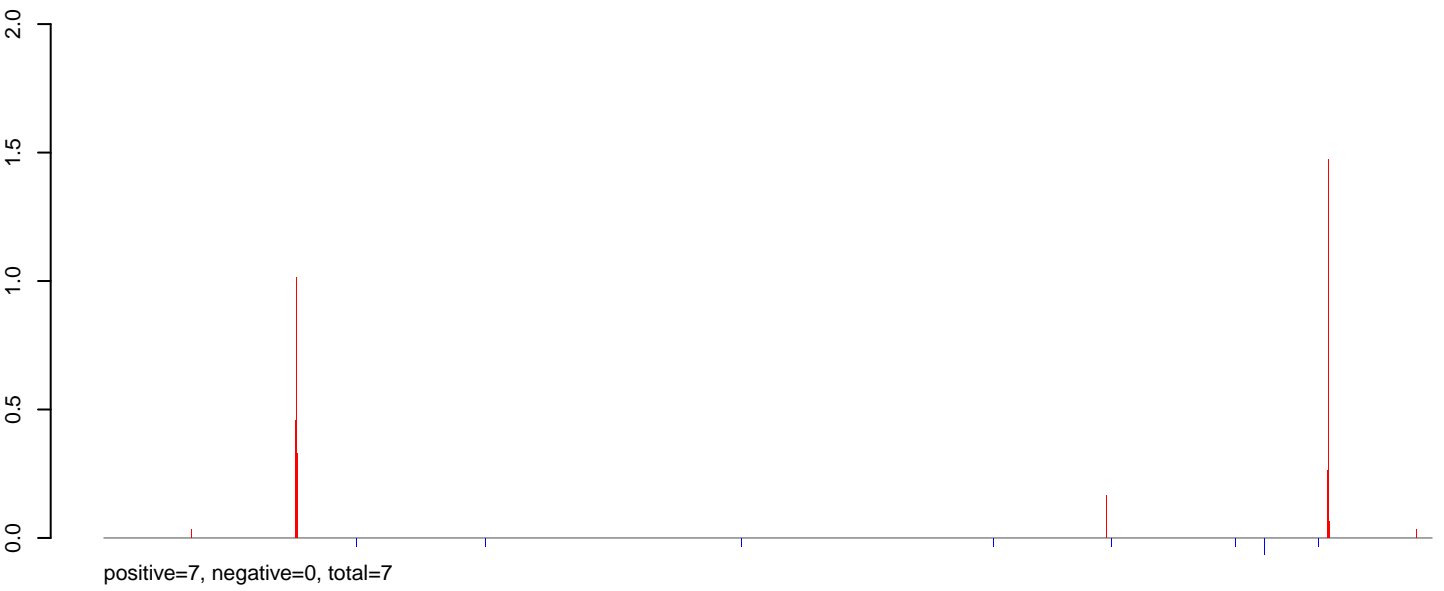
AeAeg_Aag2.TC.Dmem.24_35.rep



AeAeg_Aag2.TC.Dmem.rep



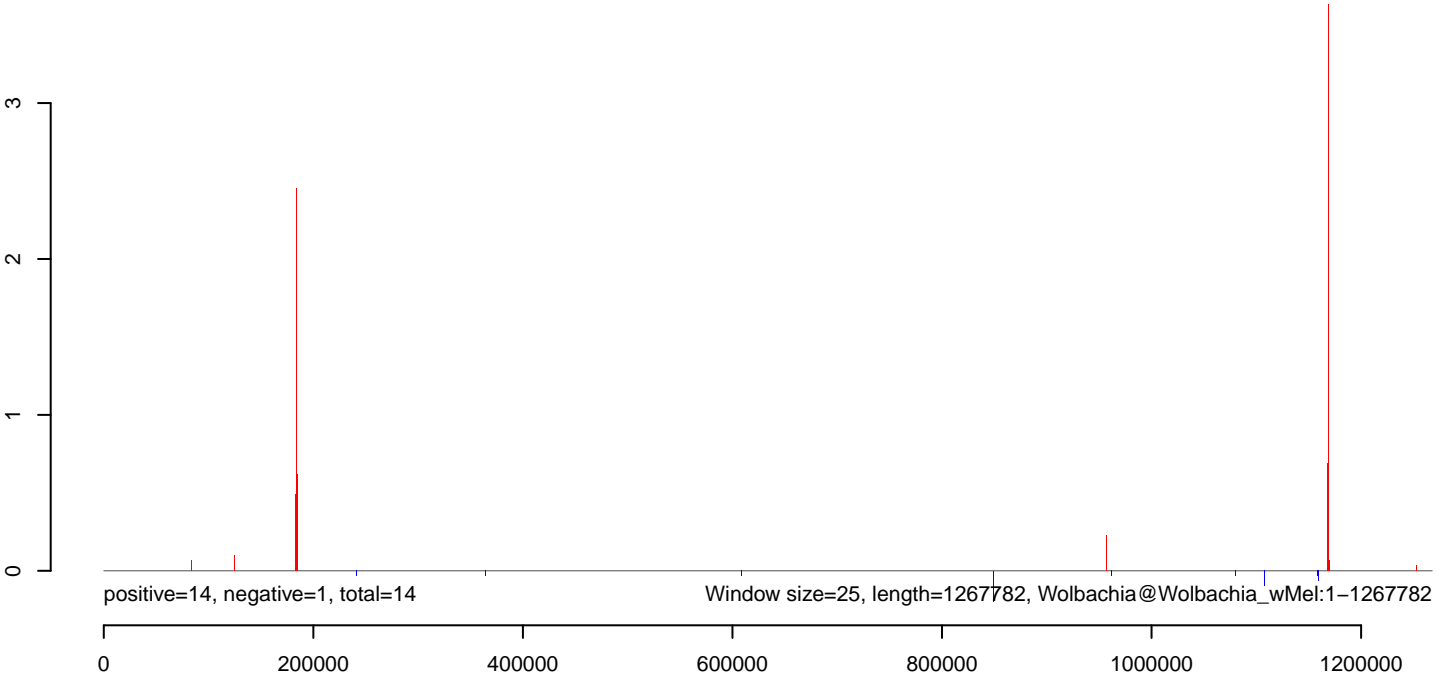
AeAeg_Aag2.TC.Dmem.18_23.rep



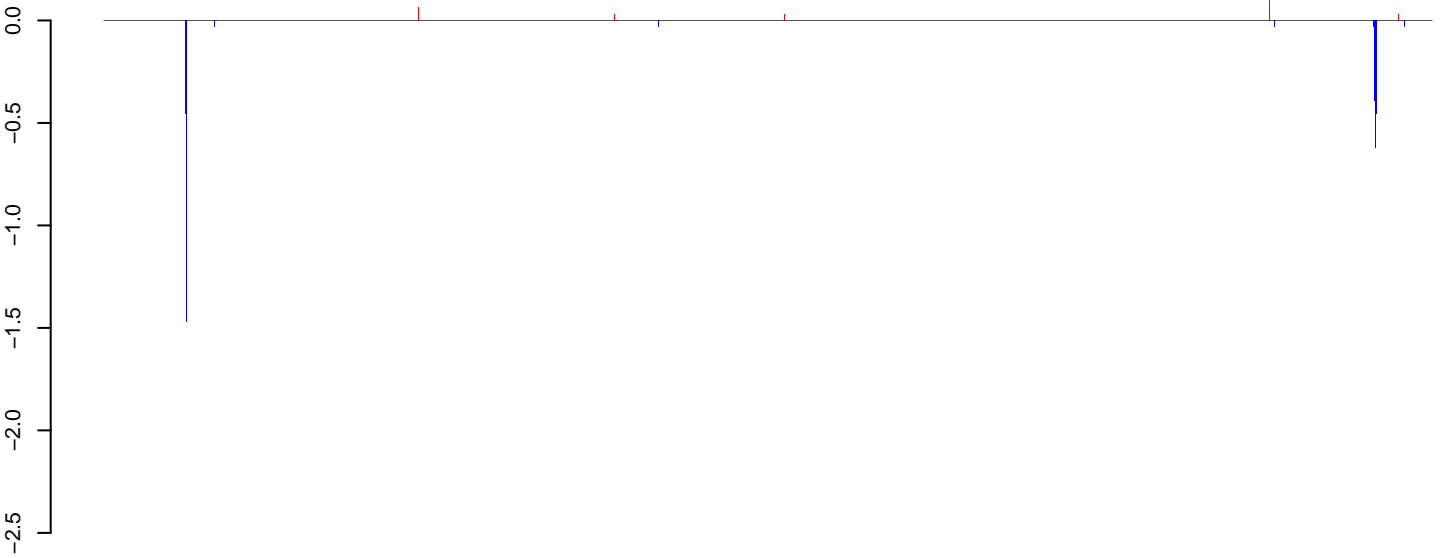
AeAeg_Aag2.TC.Dmem.24_35.rep



AeAeg_Aag2.TC.Dmem.rep

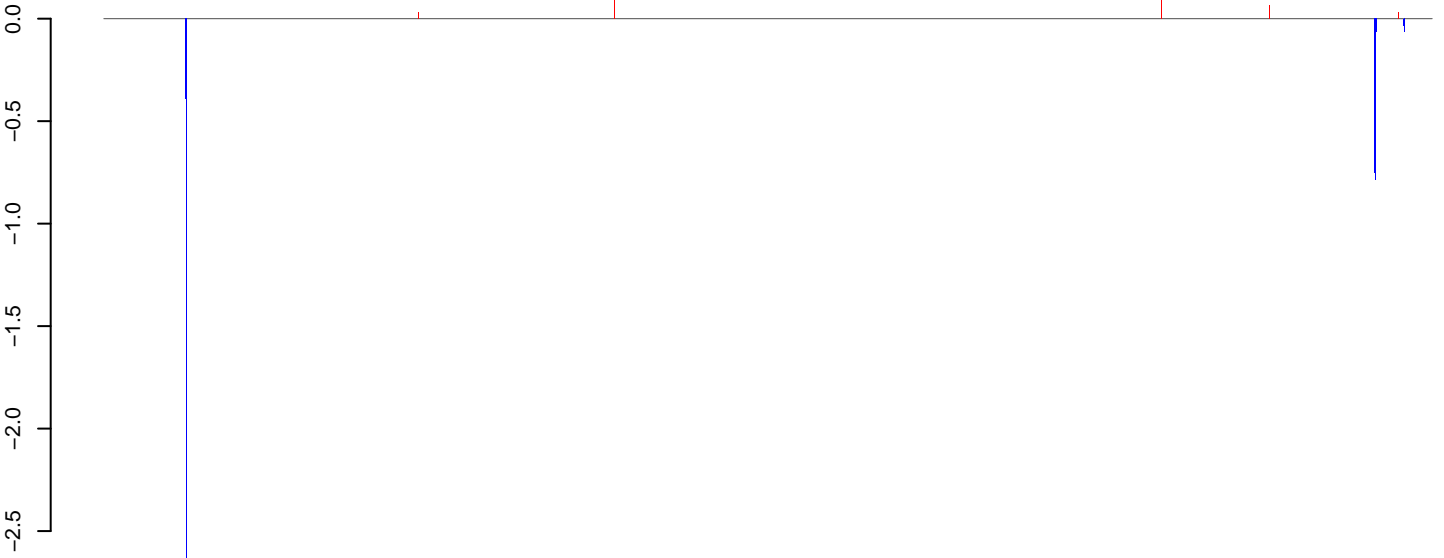


AeAeg_Aag2.TC.Dmem.18_23.rep



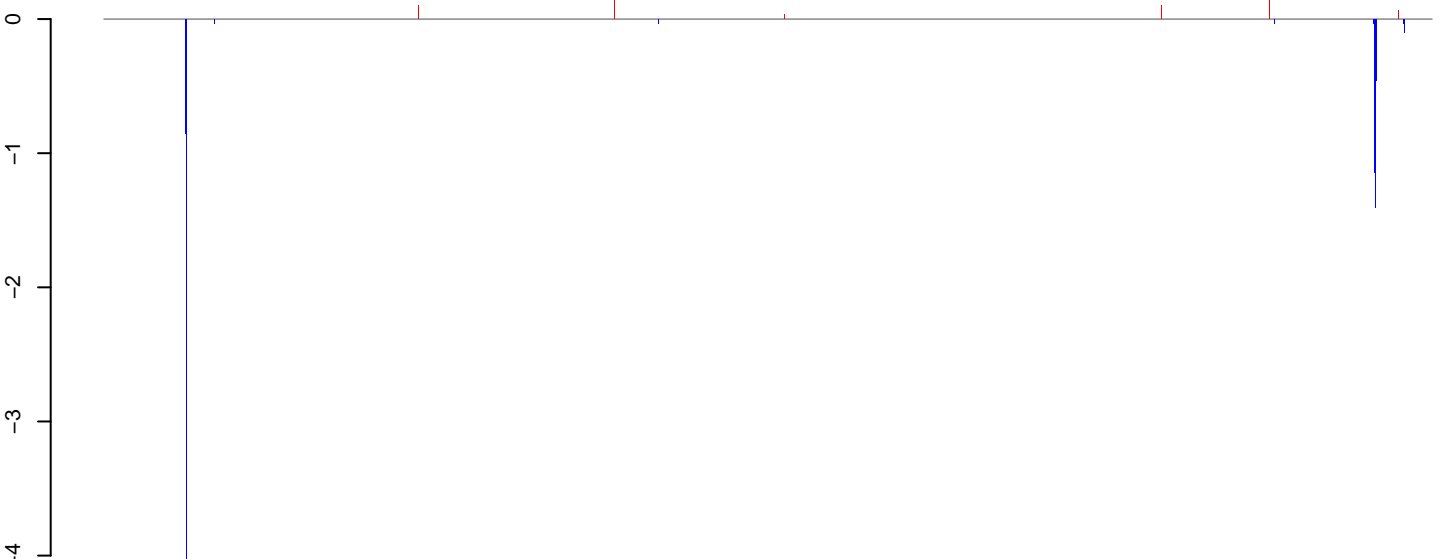
positive=0, negative=6, total=7

AeAeg_Aag2.TC.Dmem.24_35.rep



positive=0, negative=7, total=8

AeAeg_Aag2.TC.Dmem.rep

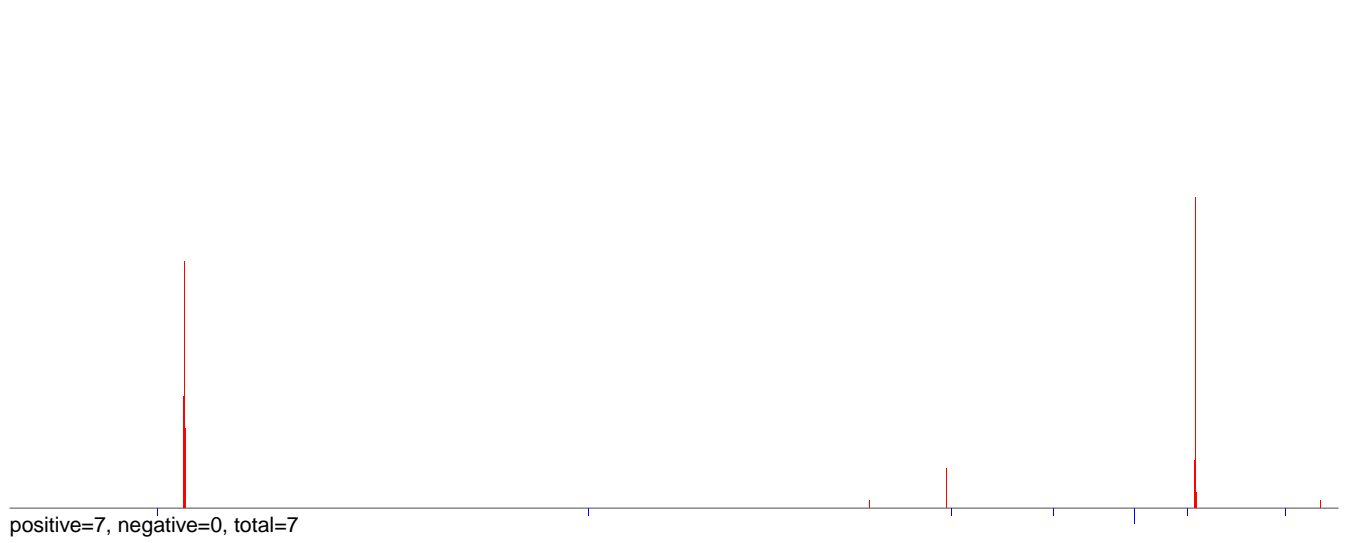


positive=1, negative=14, total=15

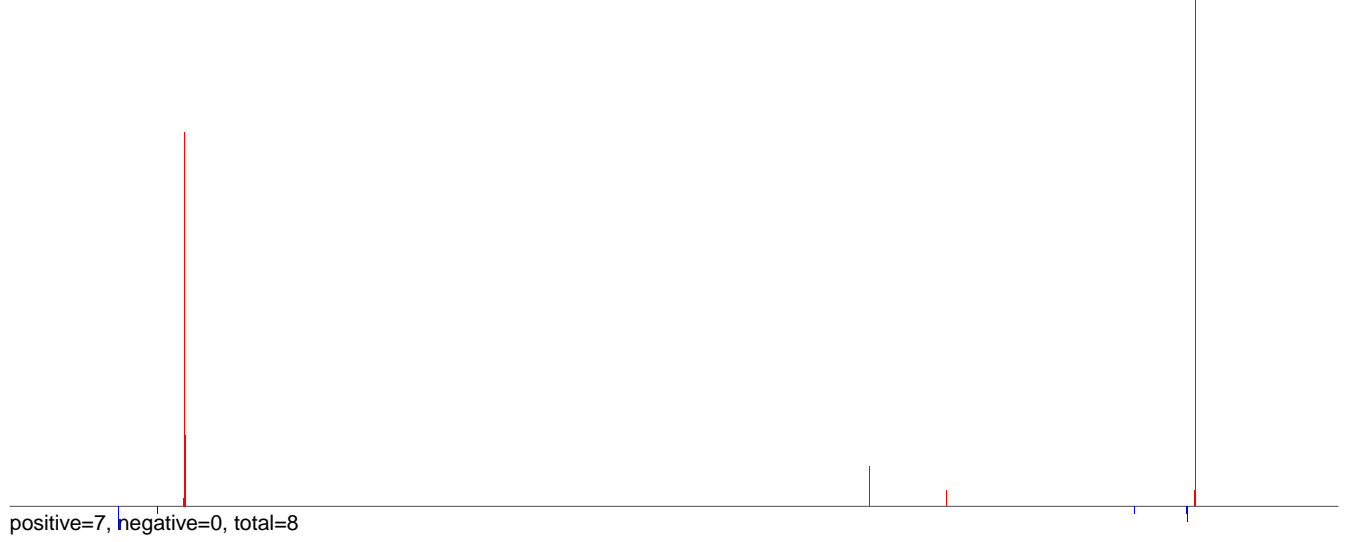
Window size=25, length=1216798, Wolbachia@Wolbachia_wAna_Hawaii:1-1216798

0 200000 400000 600000 800000 1000000 1200000

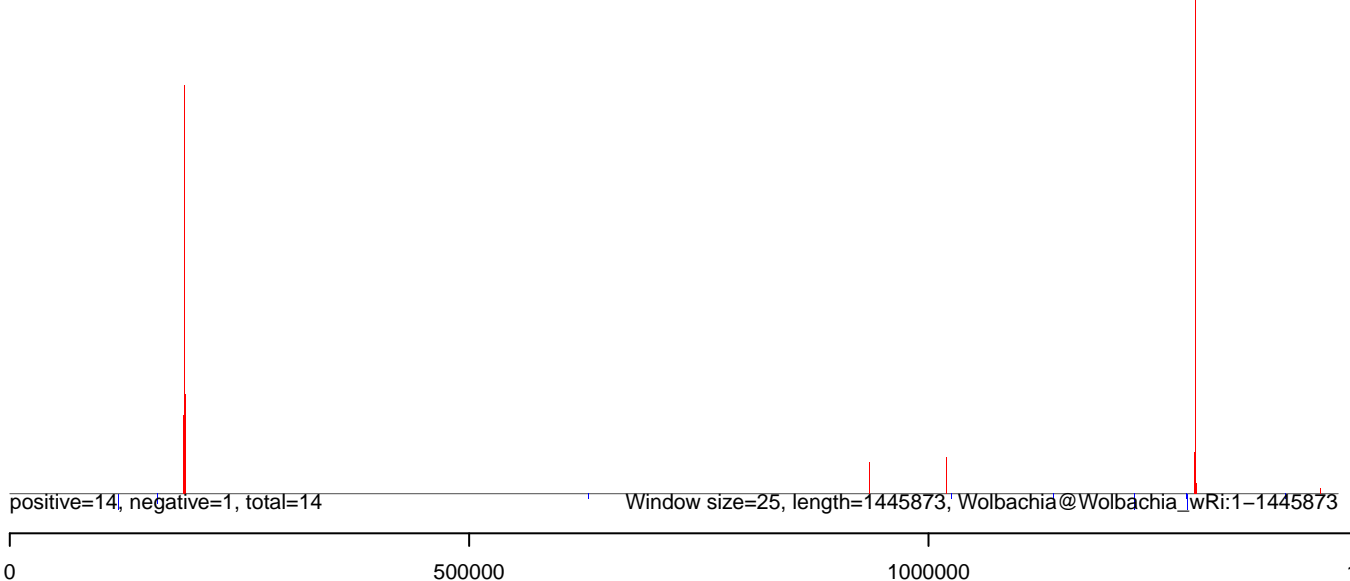
AeAeg_Aag2.TC.Dmem.18_23.rep



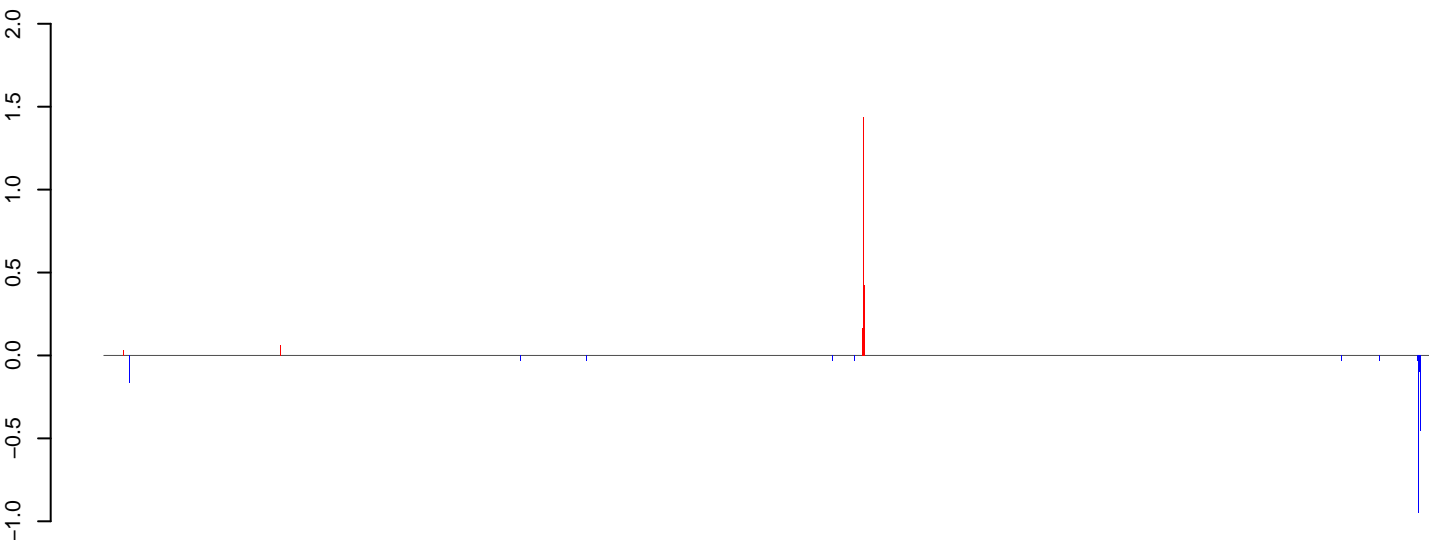
AeAeg_Aag2.TC.Dmem.24_35.rep



AeAeg_Aag2.TC.Dmem.rep

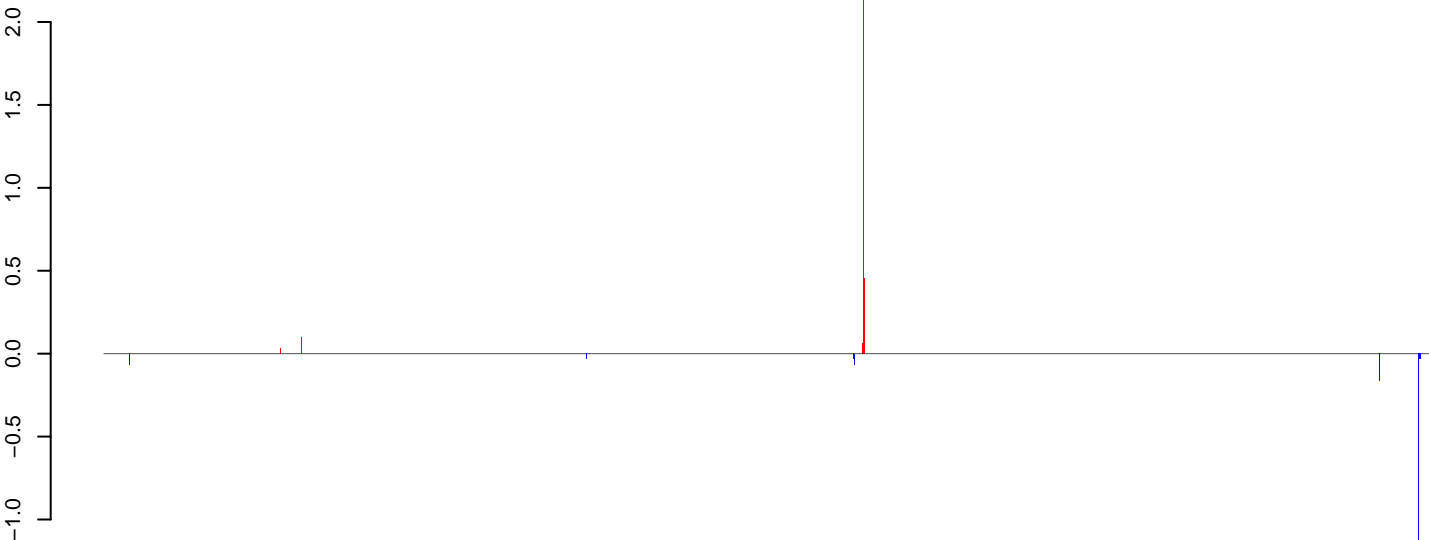


AeAeg_Aag2.TC.Dmem.18_23.rep



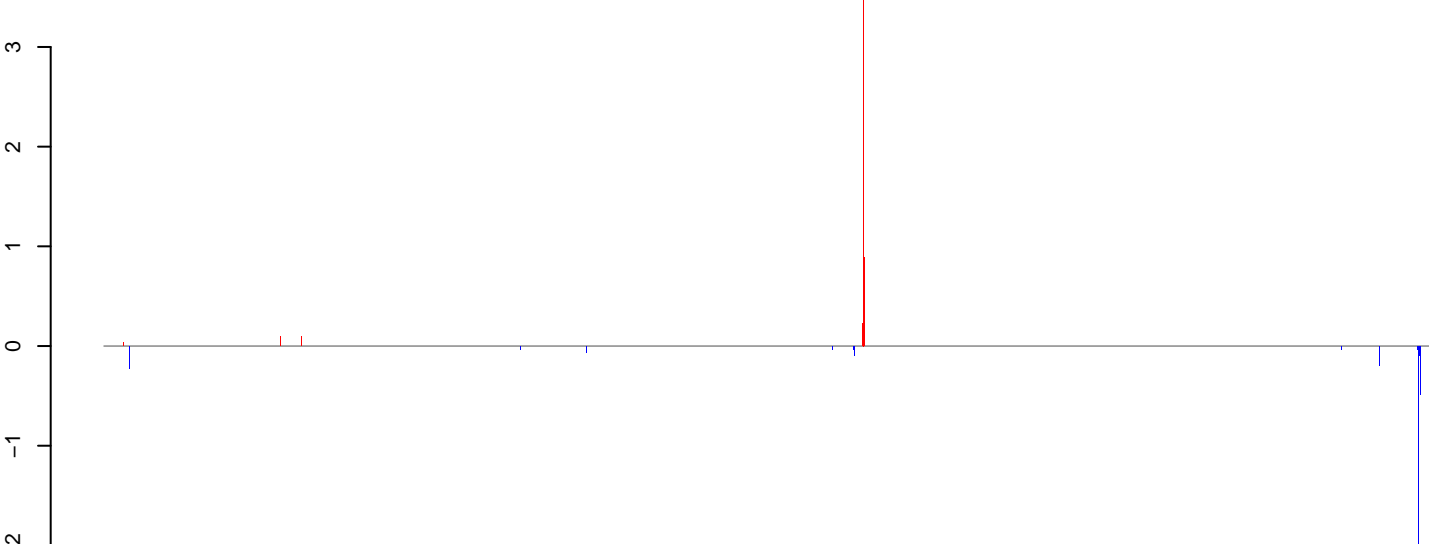
positive=4, negative=3, total=7

AeAeg_Aag2.TC.Dmem.24_35.rep



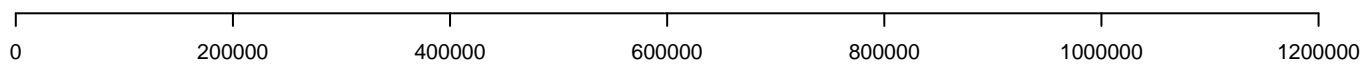
positive=5, negative=3, total=8

AeAeg_Aag2.TC.Dmem.rep

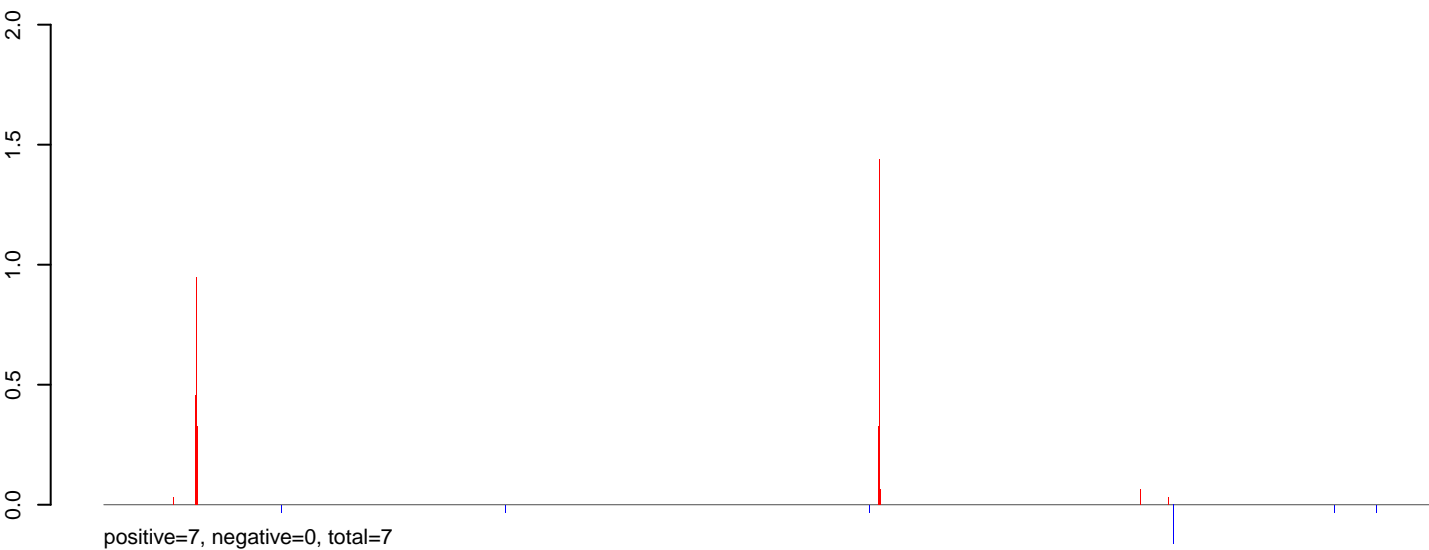


positive=9, negative=5, total=14

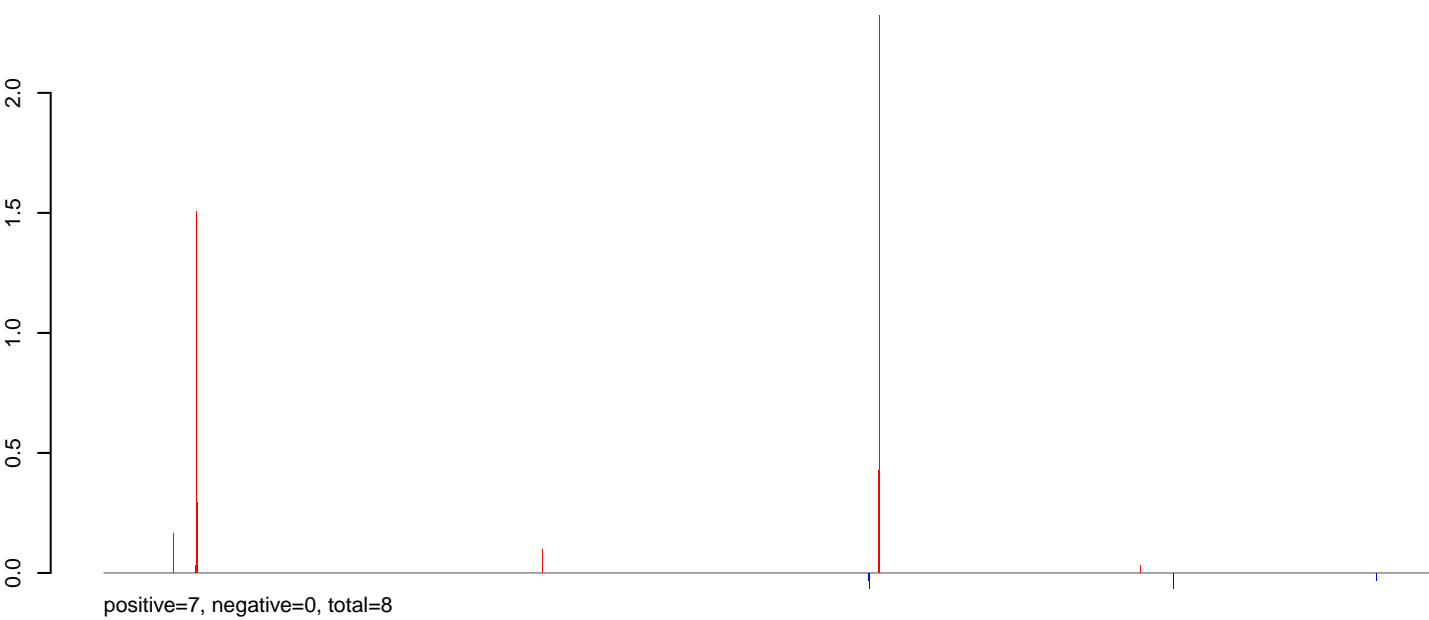
Window size=25, length=1223568, Wolbachia@Wolbachia_wAna_Indonesia:1-1223568



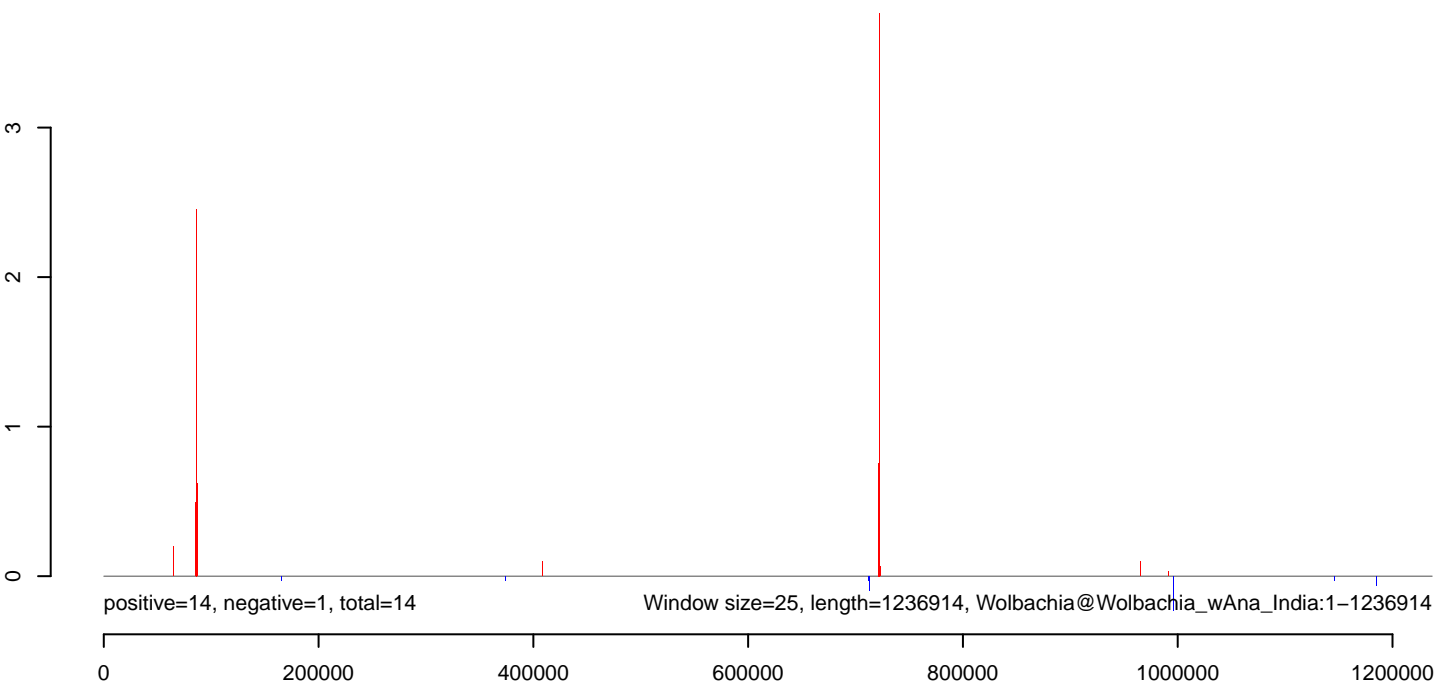
AeAeg_Aag2.TC.Dmem.18_23.rep



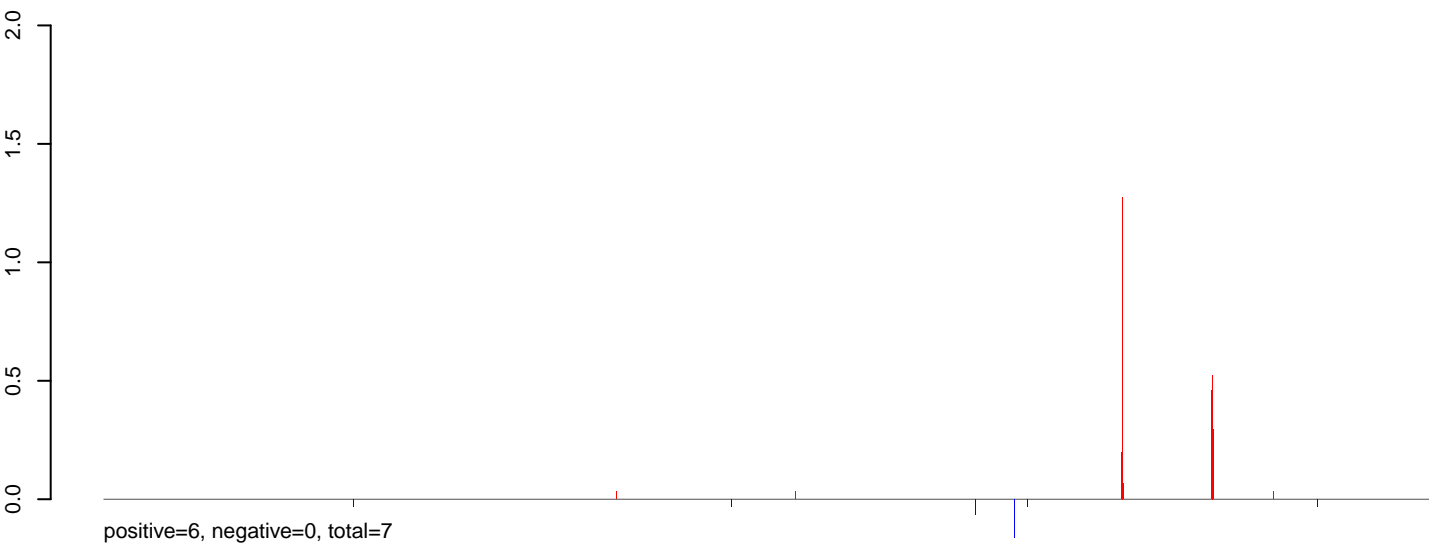
AeAeg_Aag2.TC.Dmem.24_35.rep



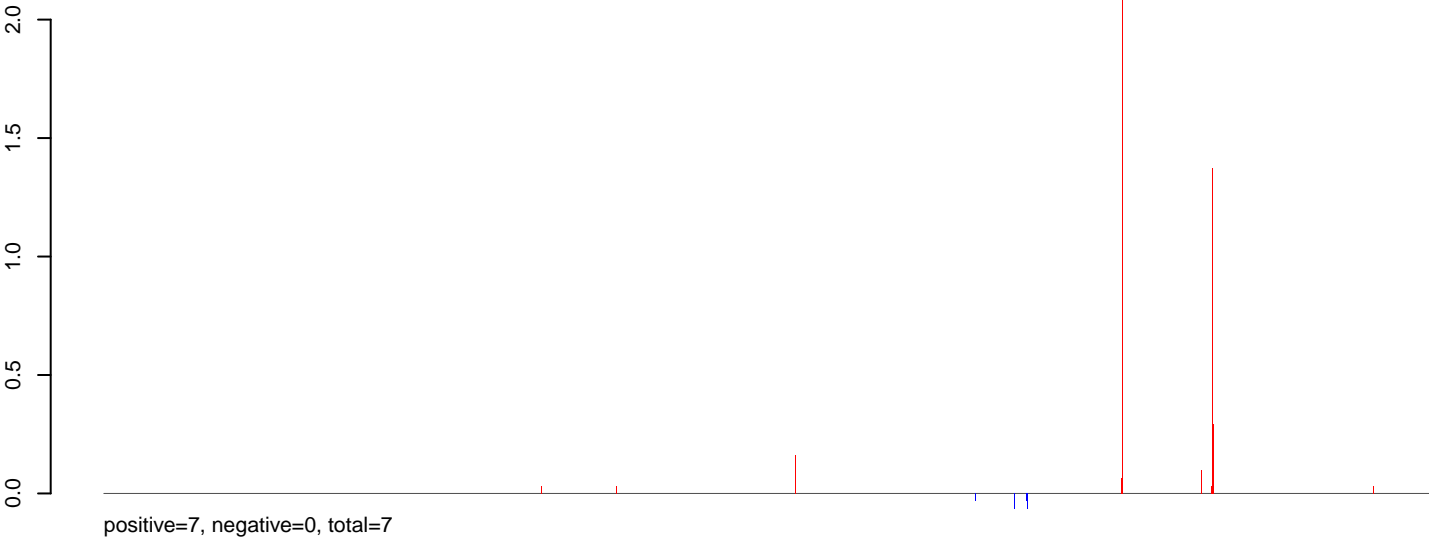
AeAeg_Aag2.TC.Dmem.rep



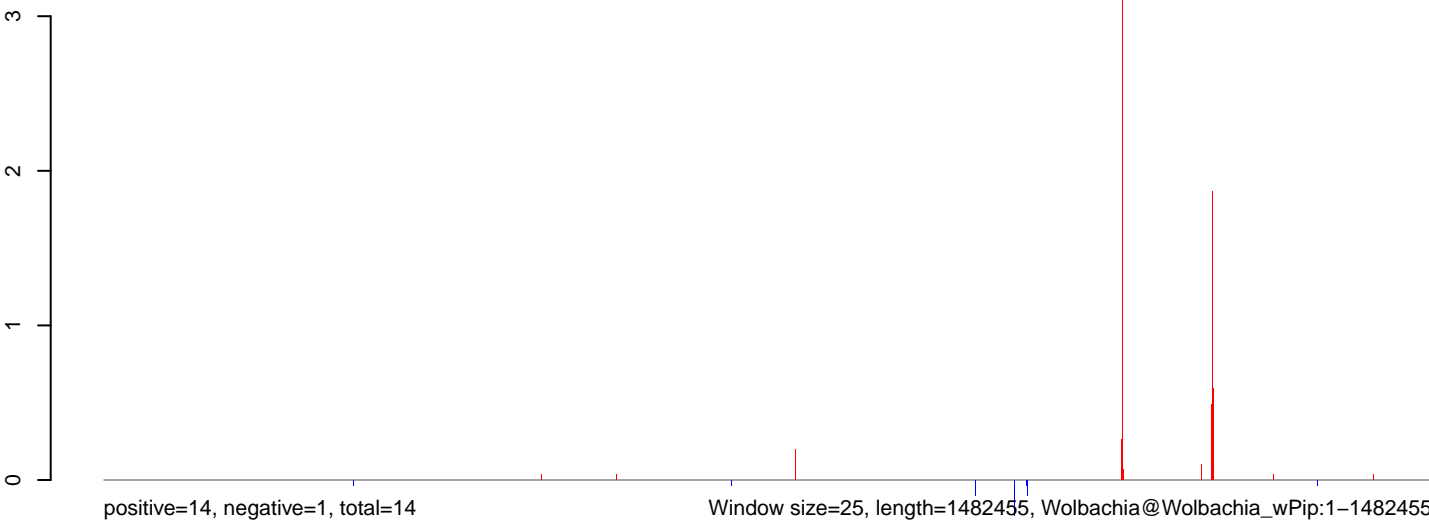
AeAeg_Aag2.TC.Dmem.18_23.rep



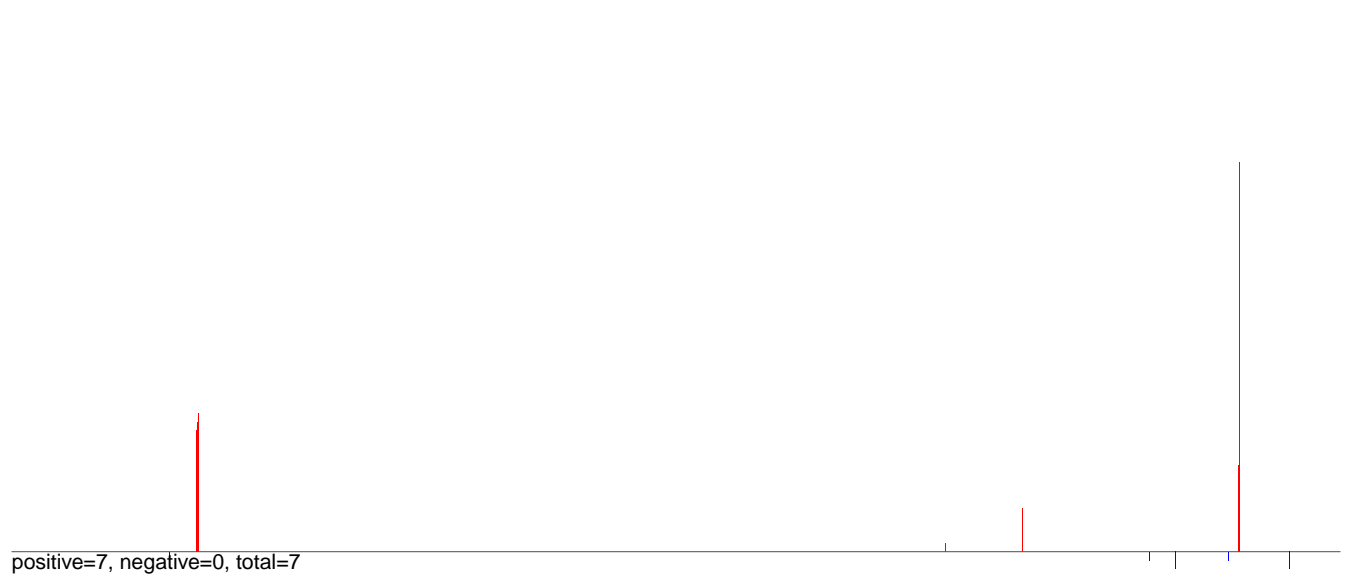
AeAeg_Aag2.TC.Dmem.24_35.rep



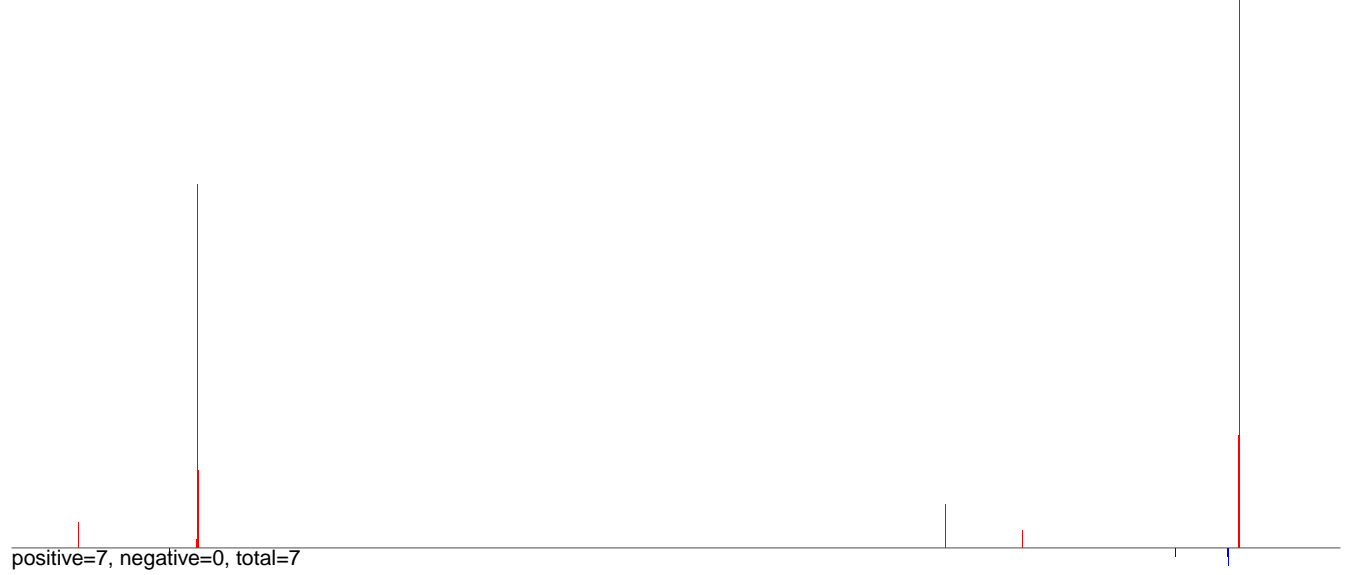
AeAeg_Aag2.TC.Dmem.rep



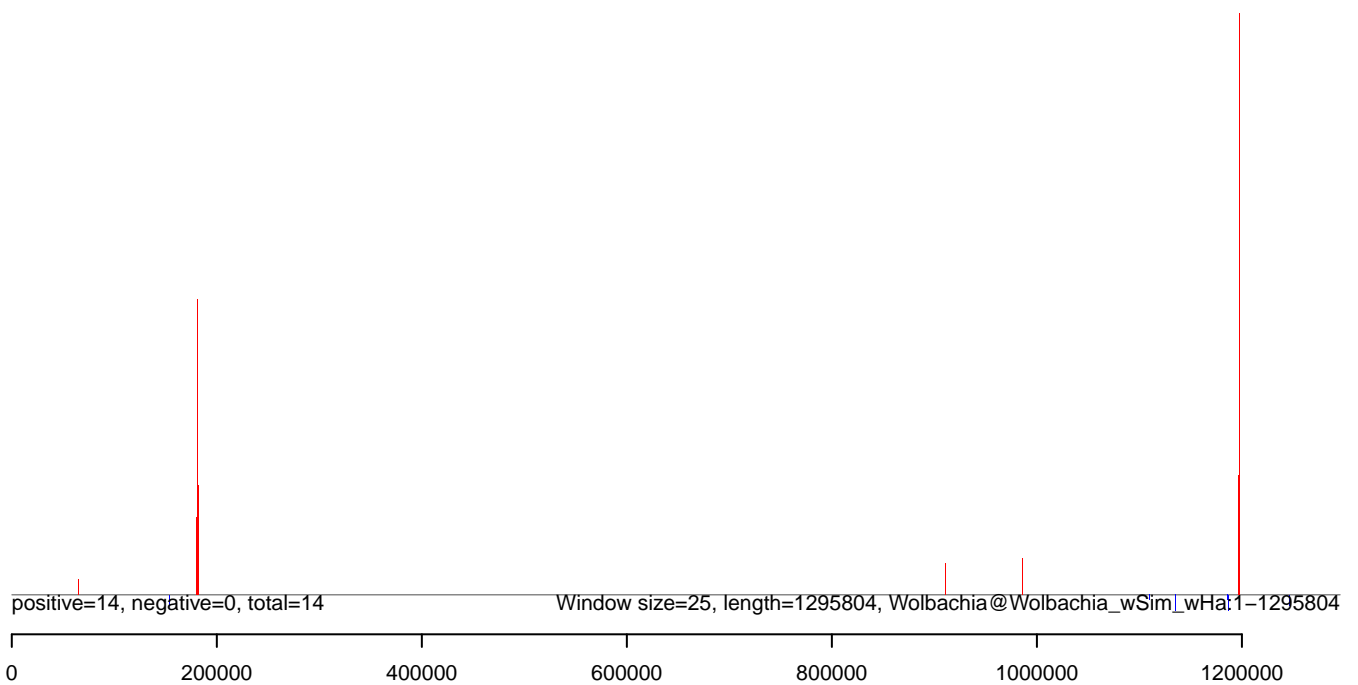
AeAeg_Aag2.TC.Dmem.18_23.rep



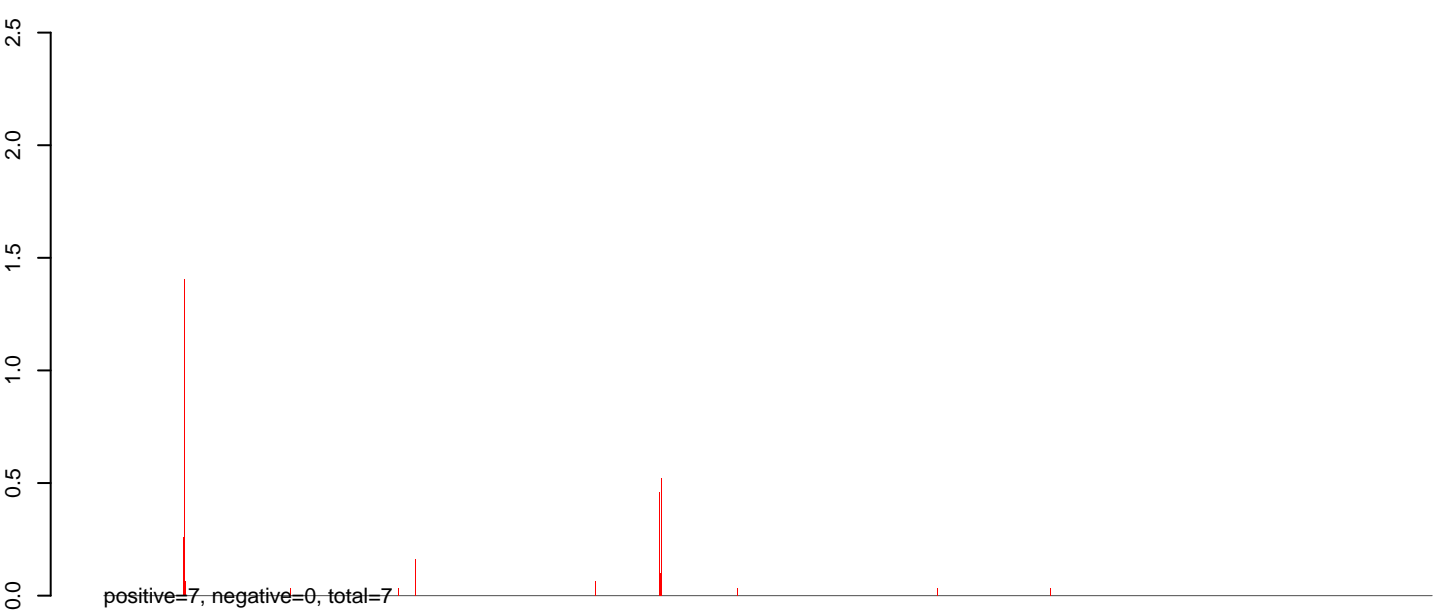
AeAeg_Aag2.TC.Dmem.24_35.rep



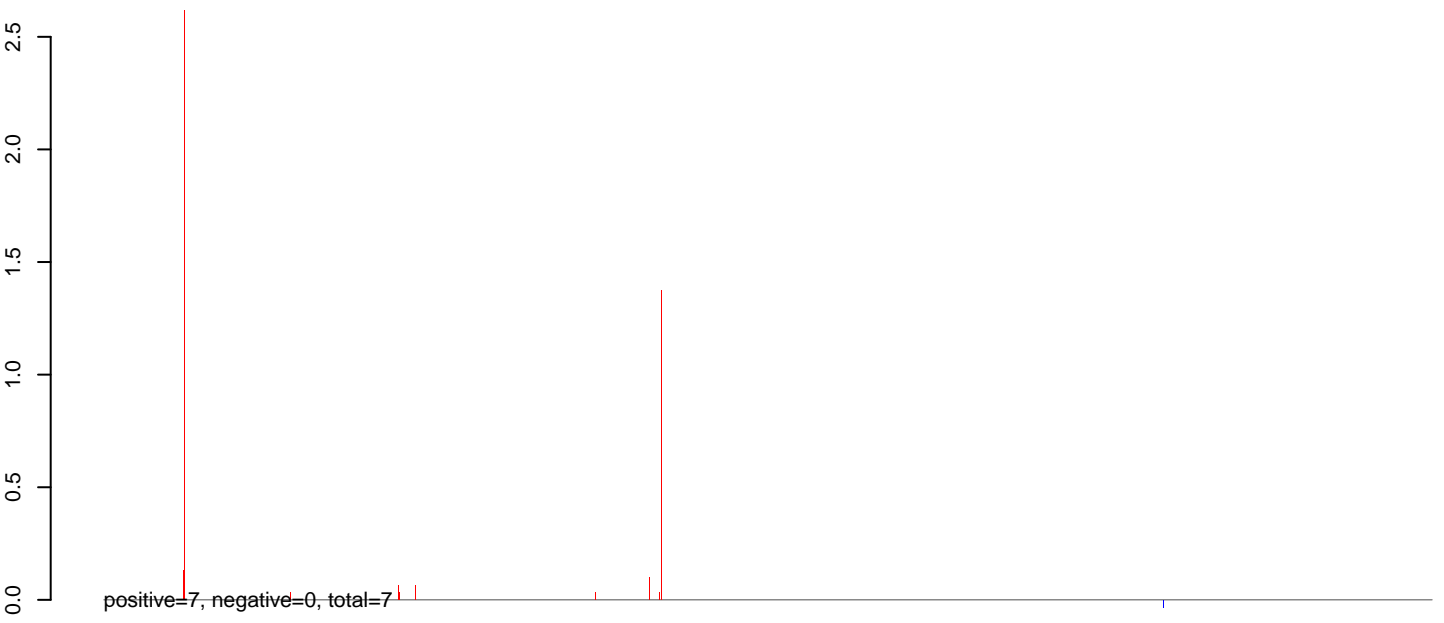
AeAeg_Aag2.TC.Dmem.rep



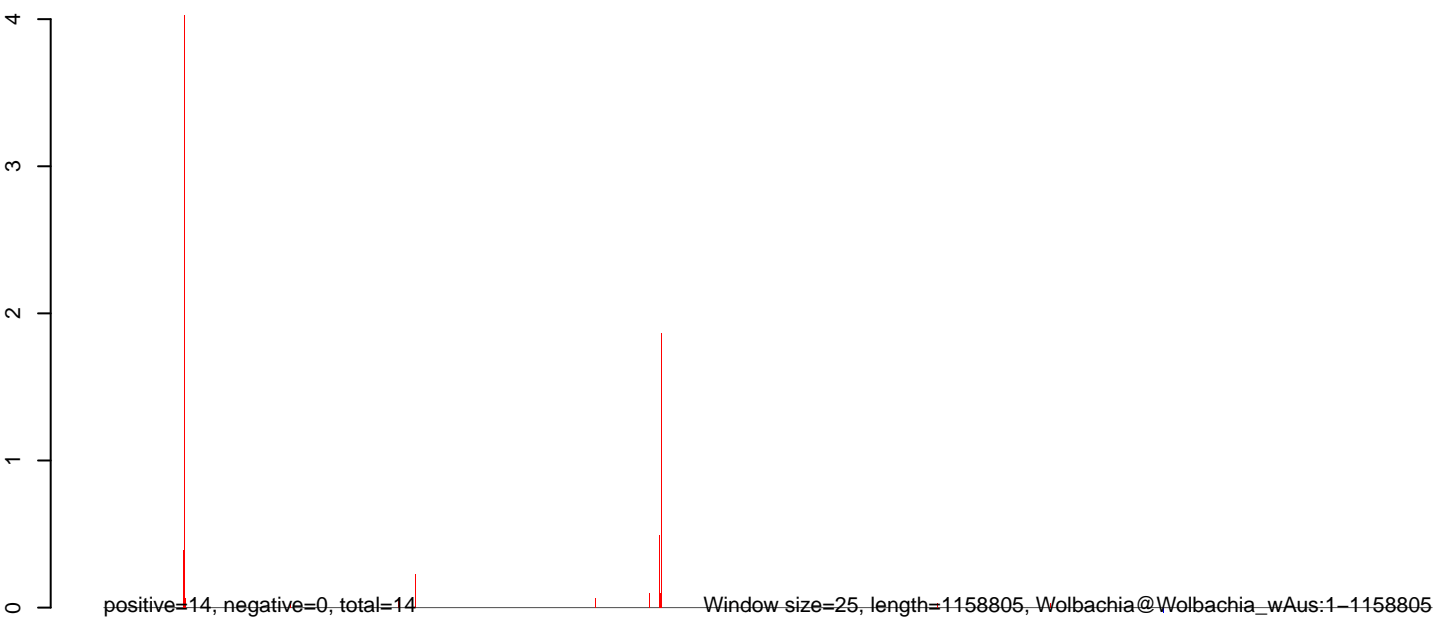
AeAeg_Aag2.TC.Dmem.18_23.rep



AeAeg_Aag2.TC.Dmem.24_35.rep

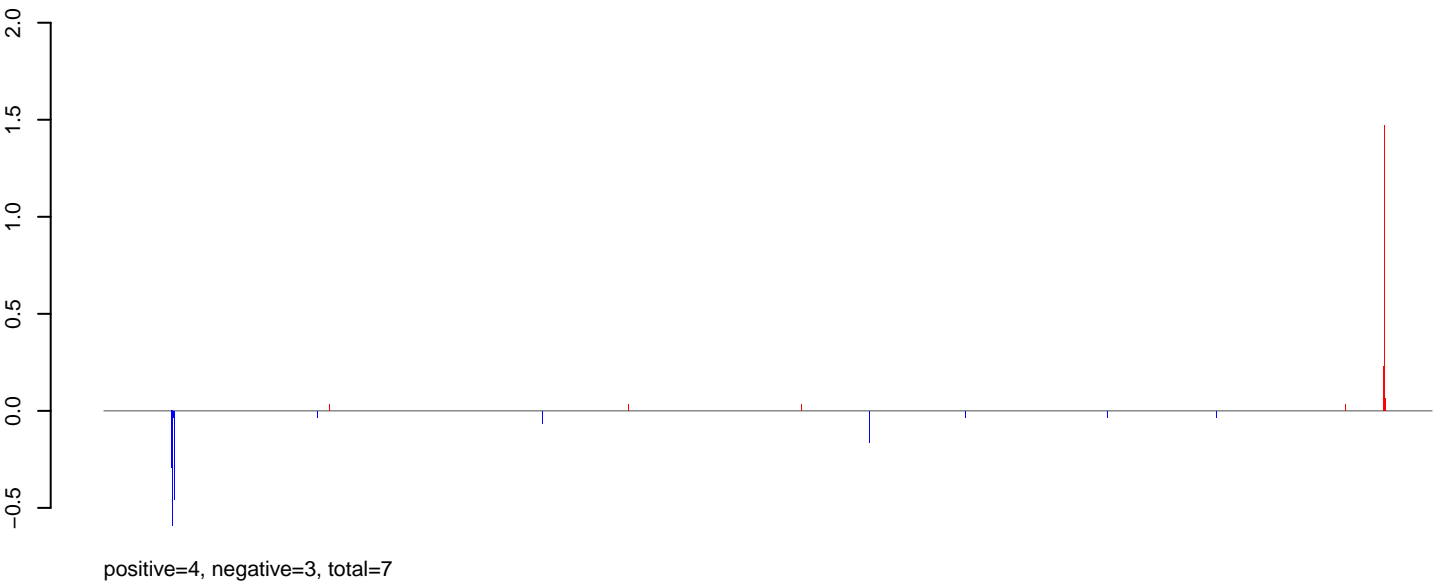


AeAeg_Aag2.TC.Dmem.rep

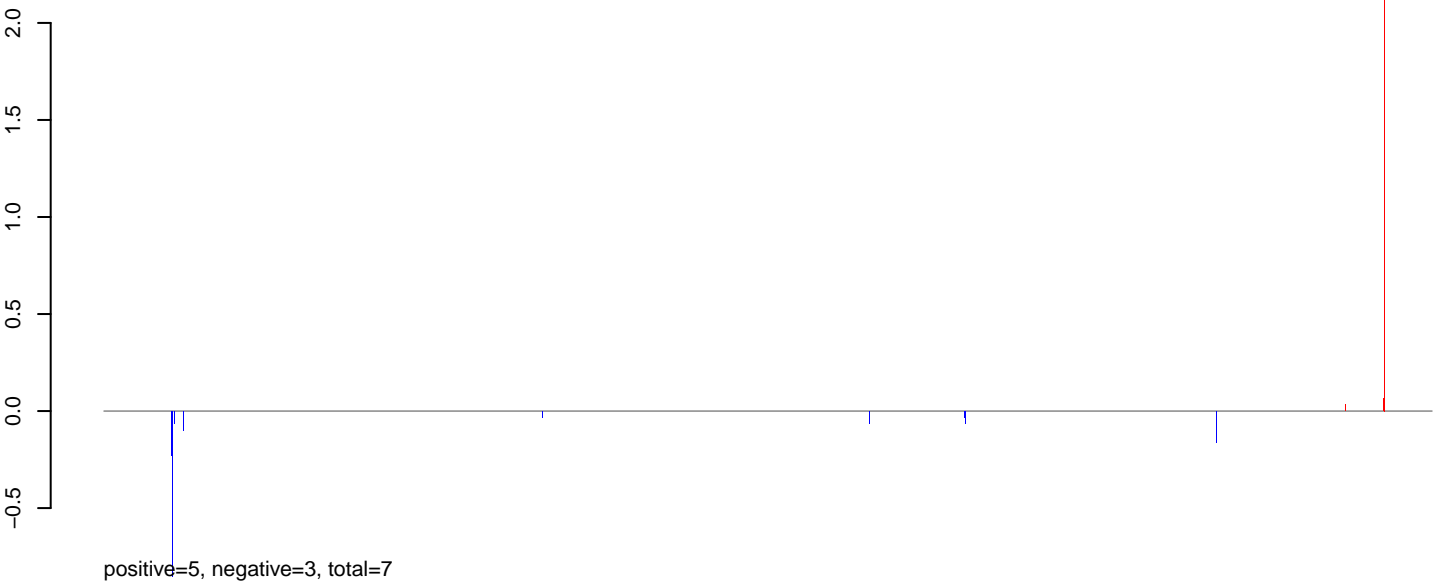


0 200000 400000 600000 800000 1000000 1200000

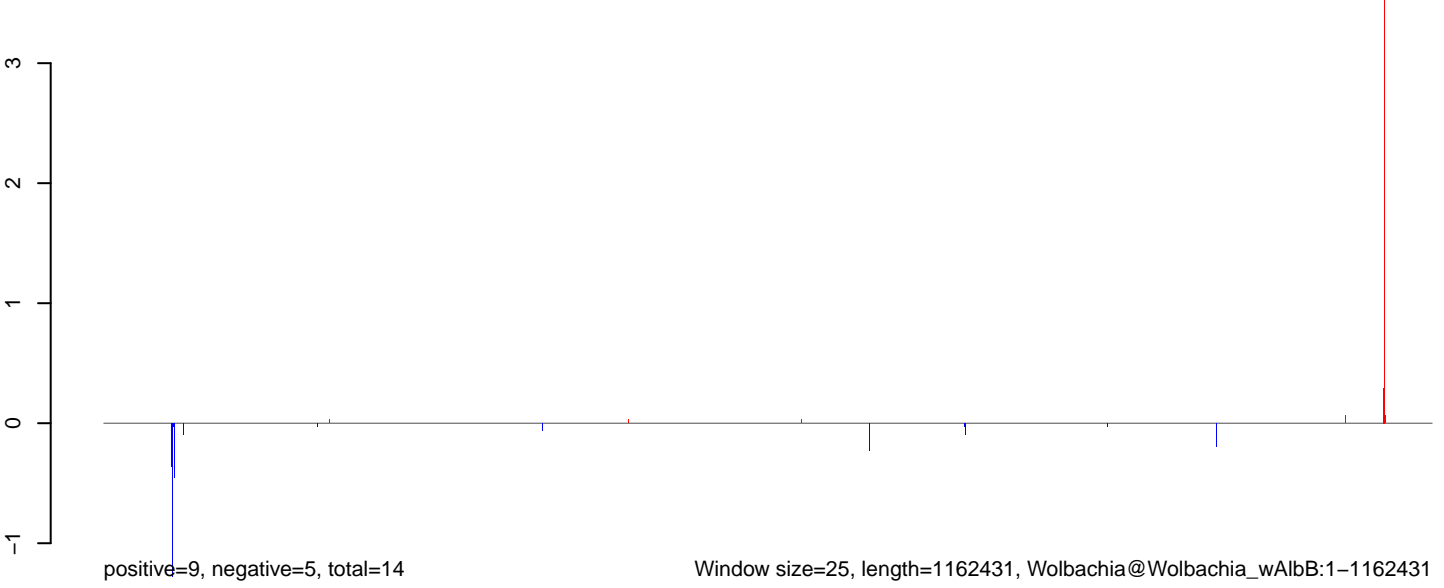
AeAeg_Aag2.TC.Dmem.18_23.rep



AeAeg_Aag2.TC.Dmem.24_35.rep

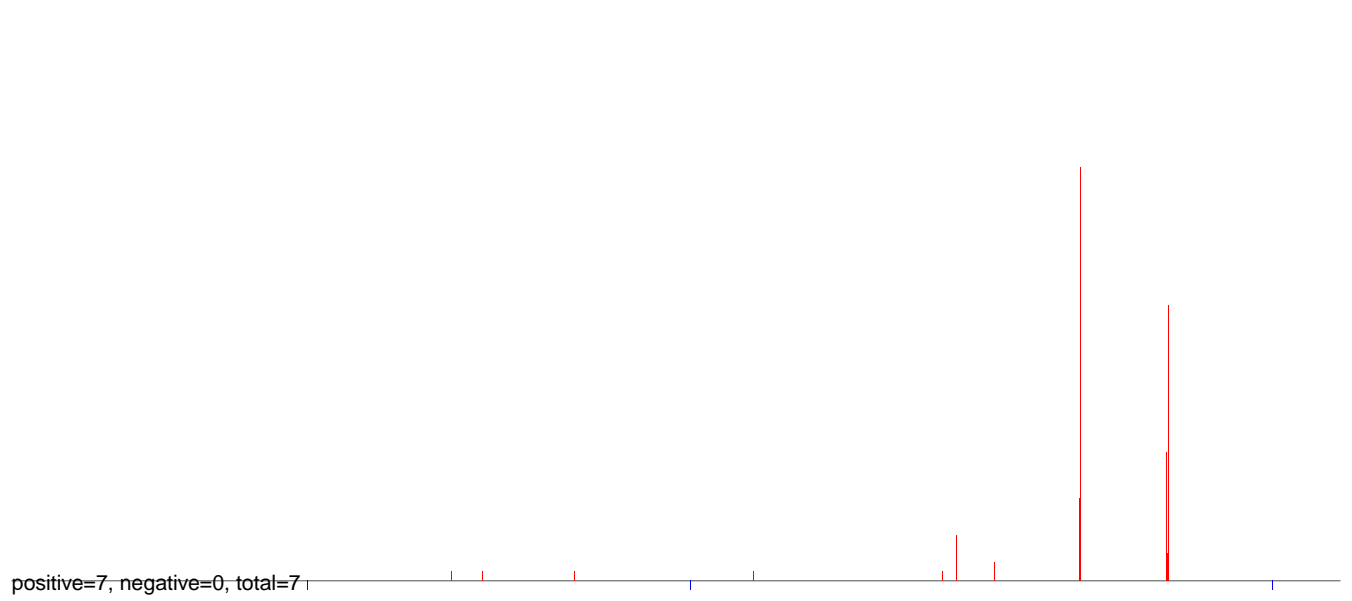


AeAeg_Aag2.TC.Dmem.rep

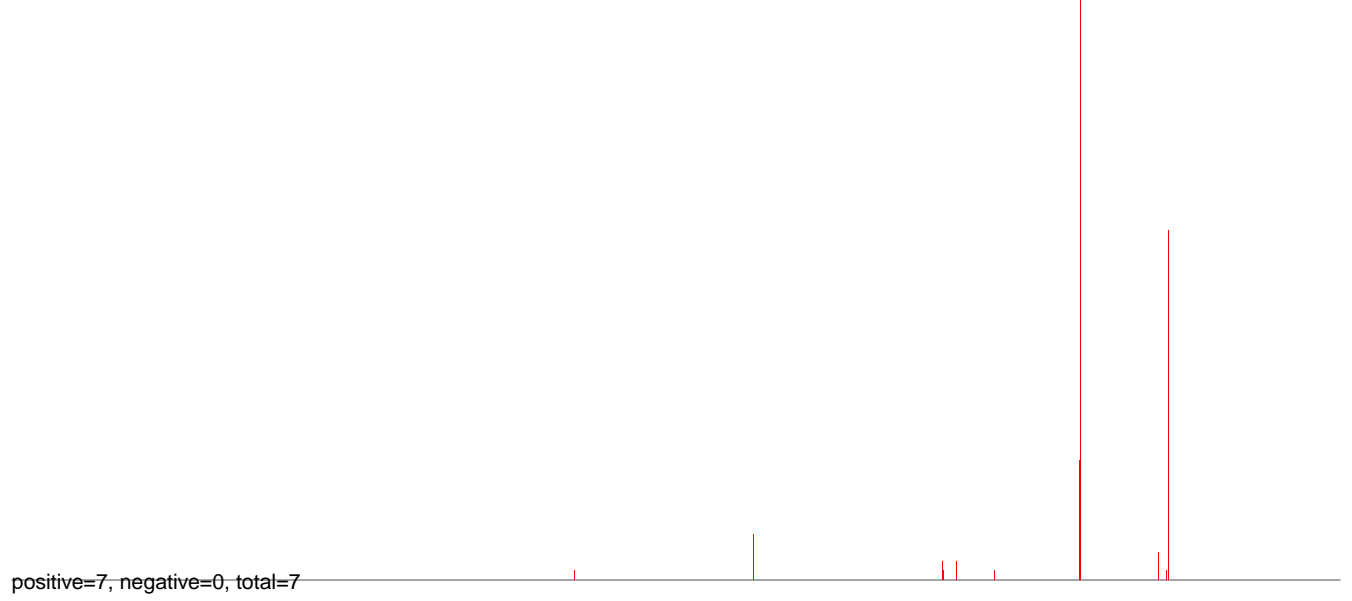


0 200000 400000 600000 800000 1000000 1200000

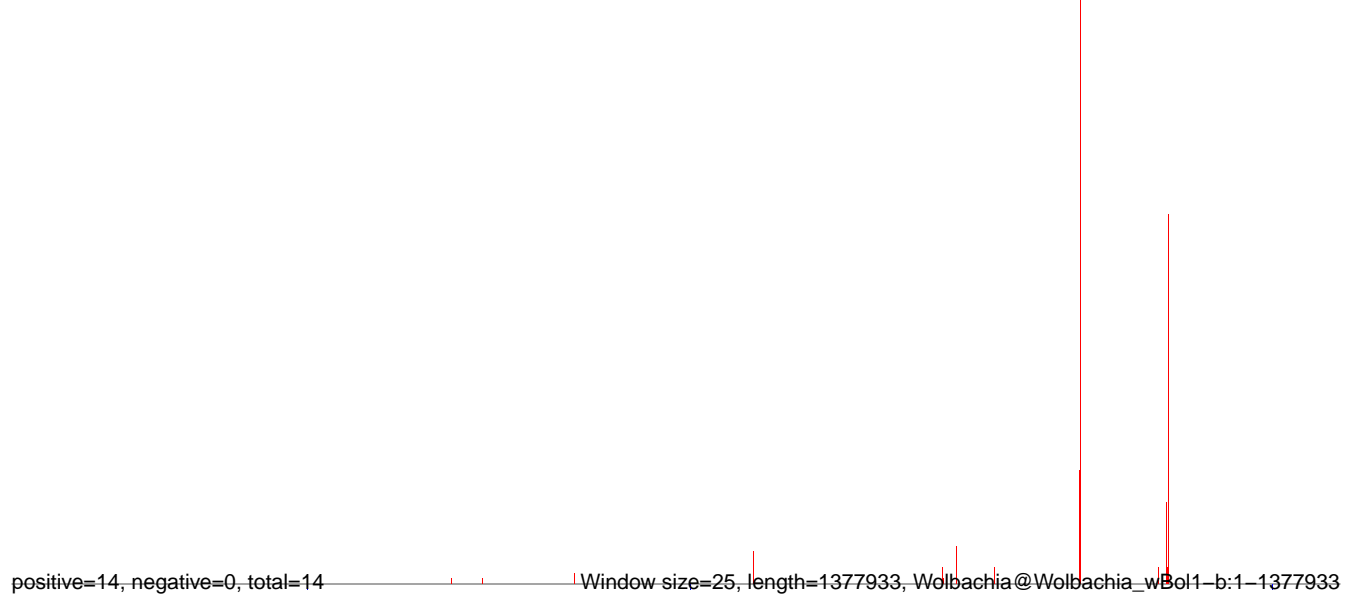
AeAeg_Aag2.TC.Dmem.18_23.rep



AeAeg_Aag2.TC.Dmem.24_35.rep

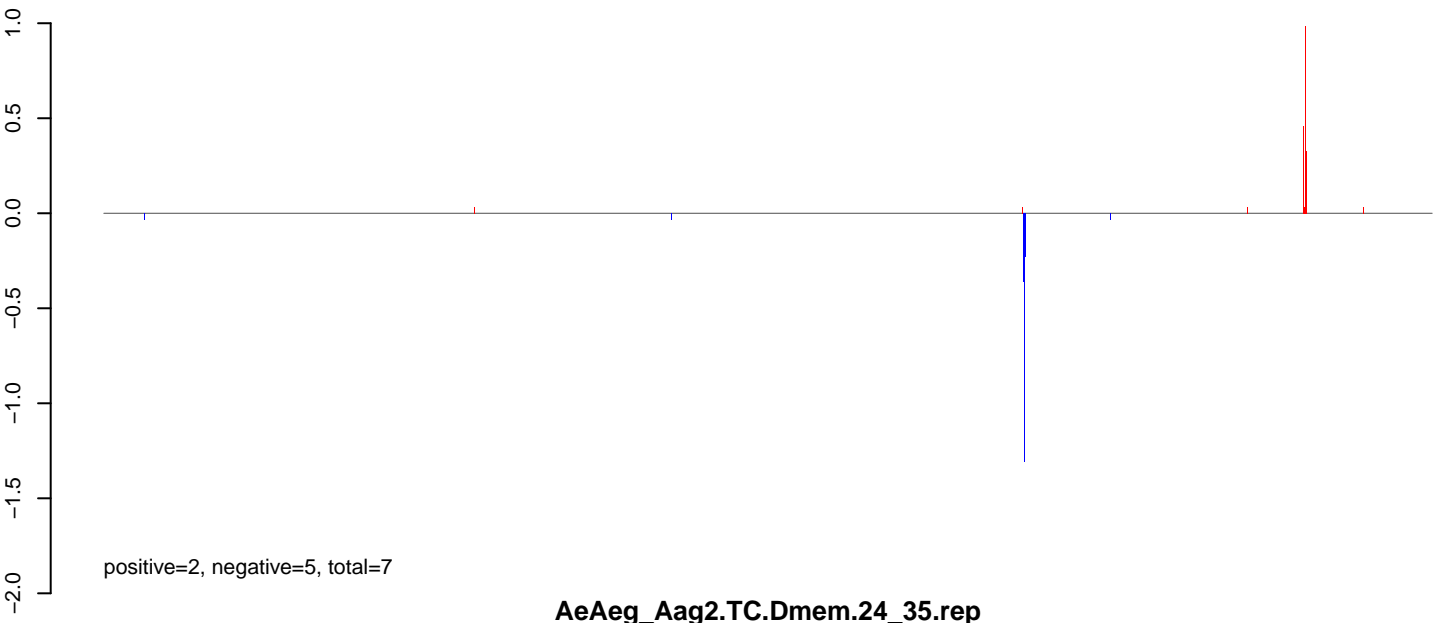


AeAeg_Aag2.TC.Dmem.rep

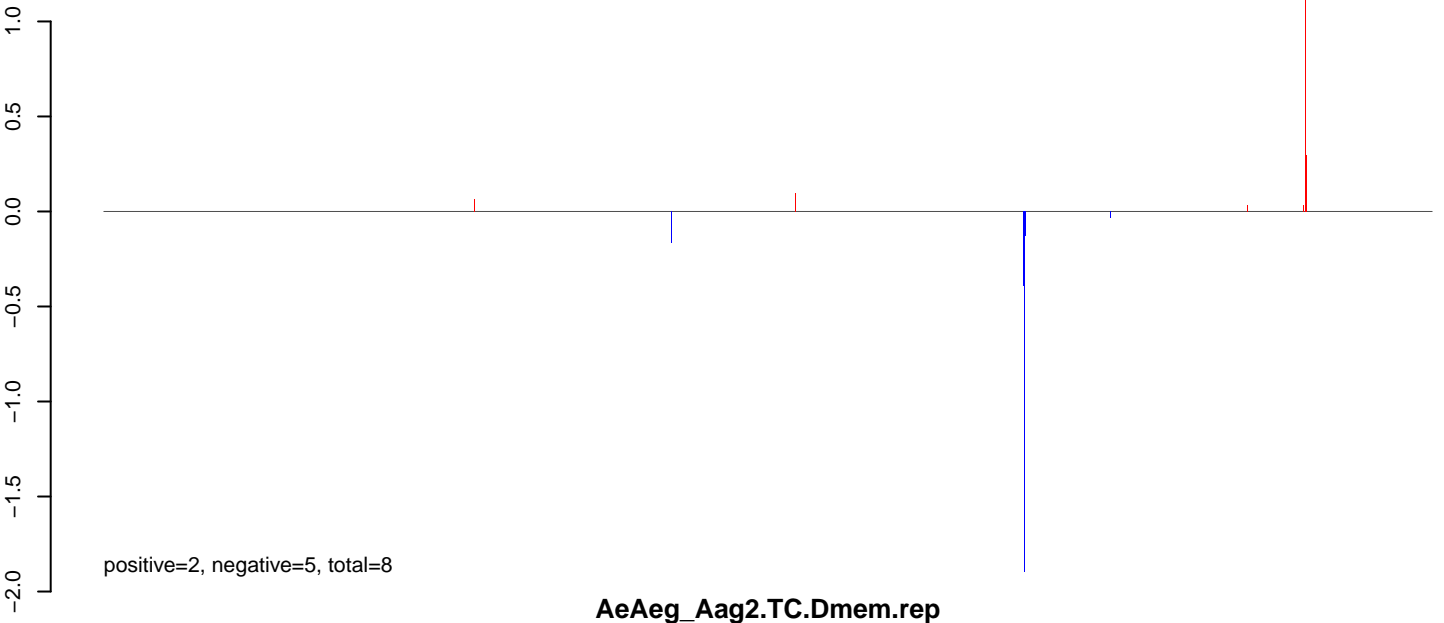


0 200000 400000 600000 800000 1000000 1200000 1400000

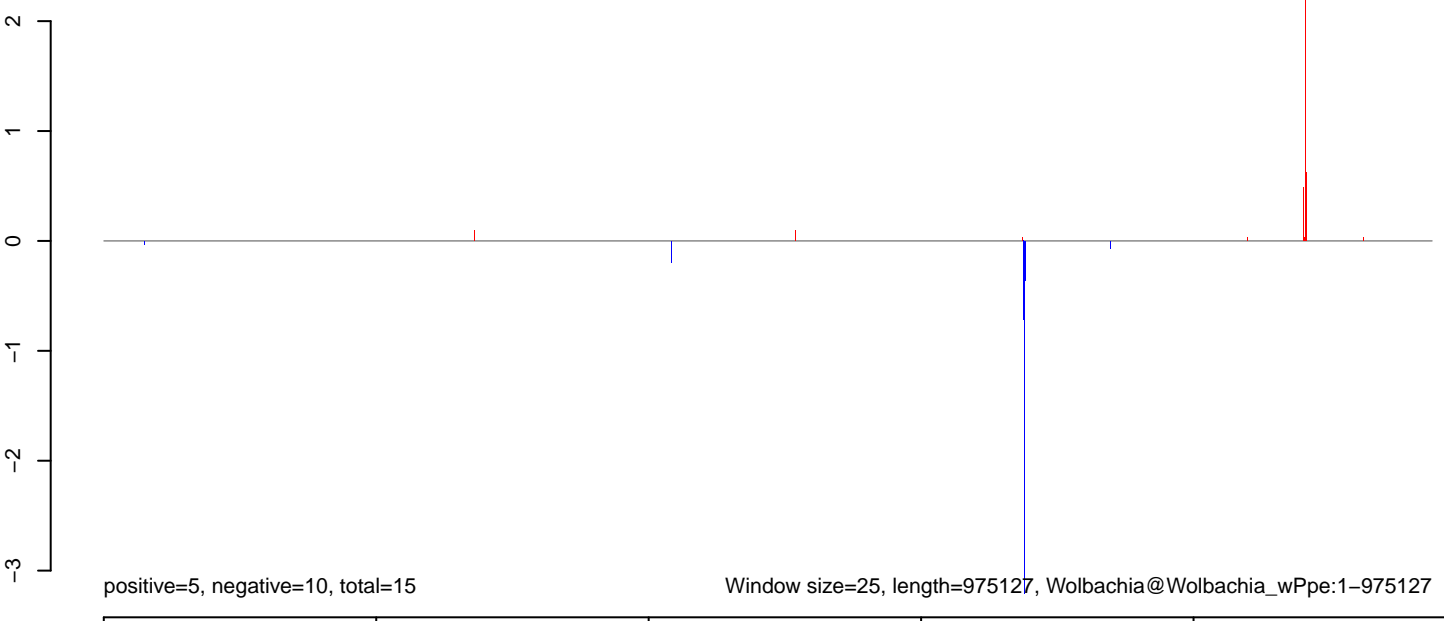
AeAeg_Aag2.TC.Dmem.18_23.rep



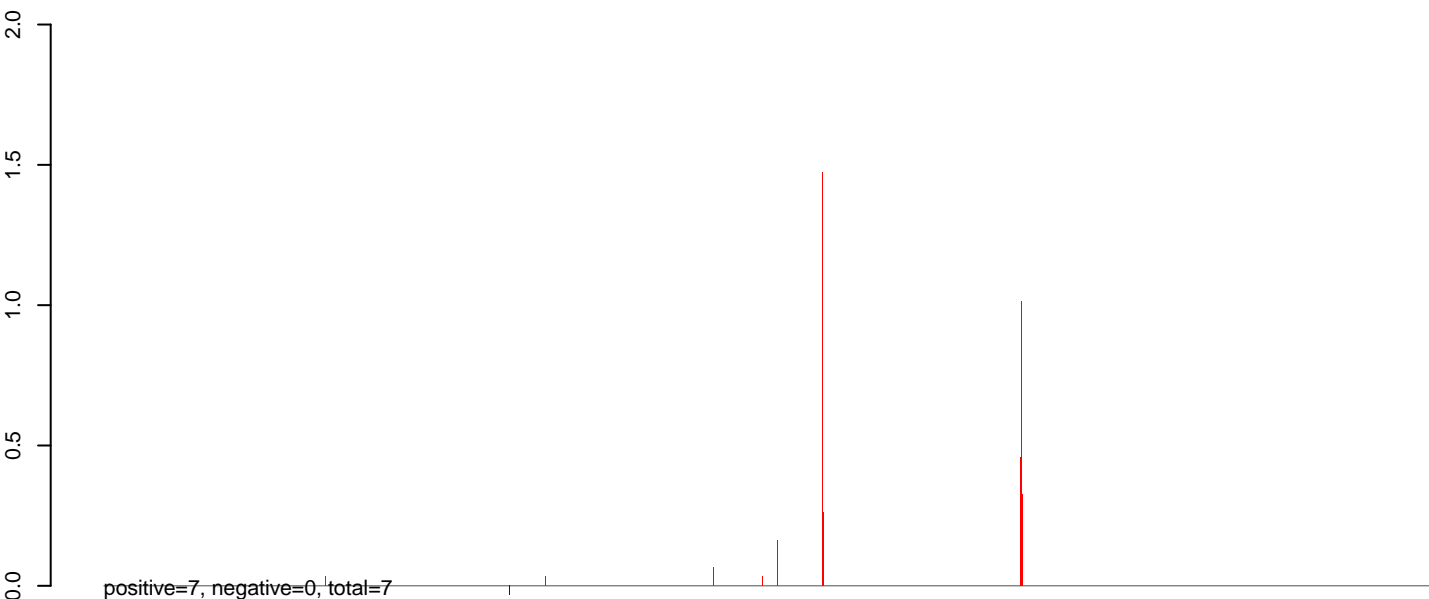
AeAeg_Aag2.TC.Dmem.24_35.rep



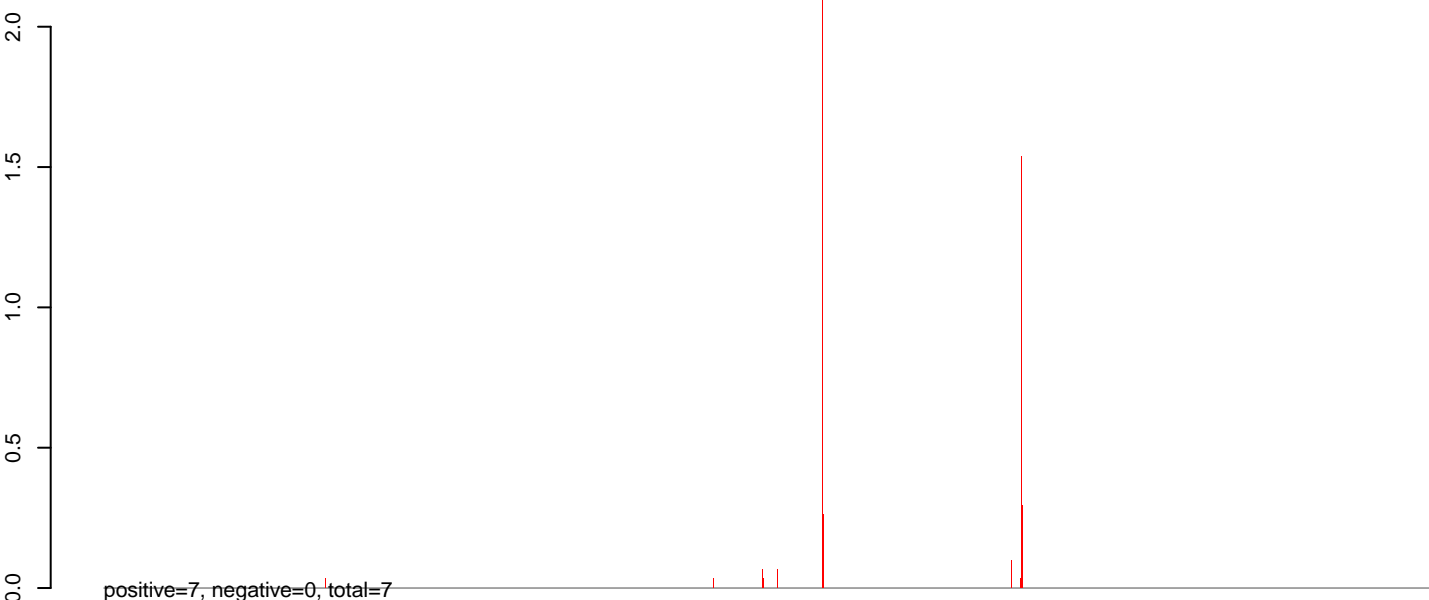
AeAeg_Aag2.TC.Dmem.rep



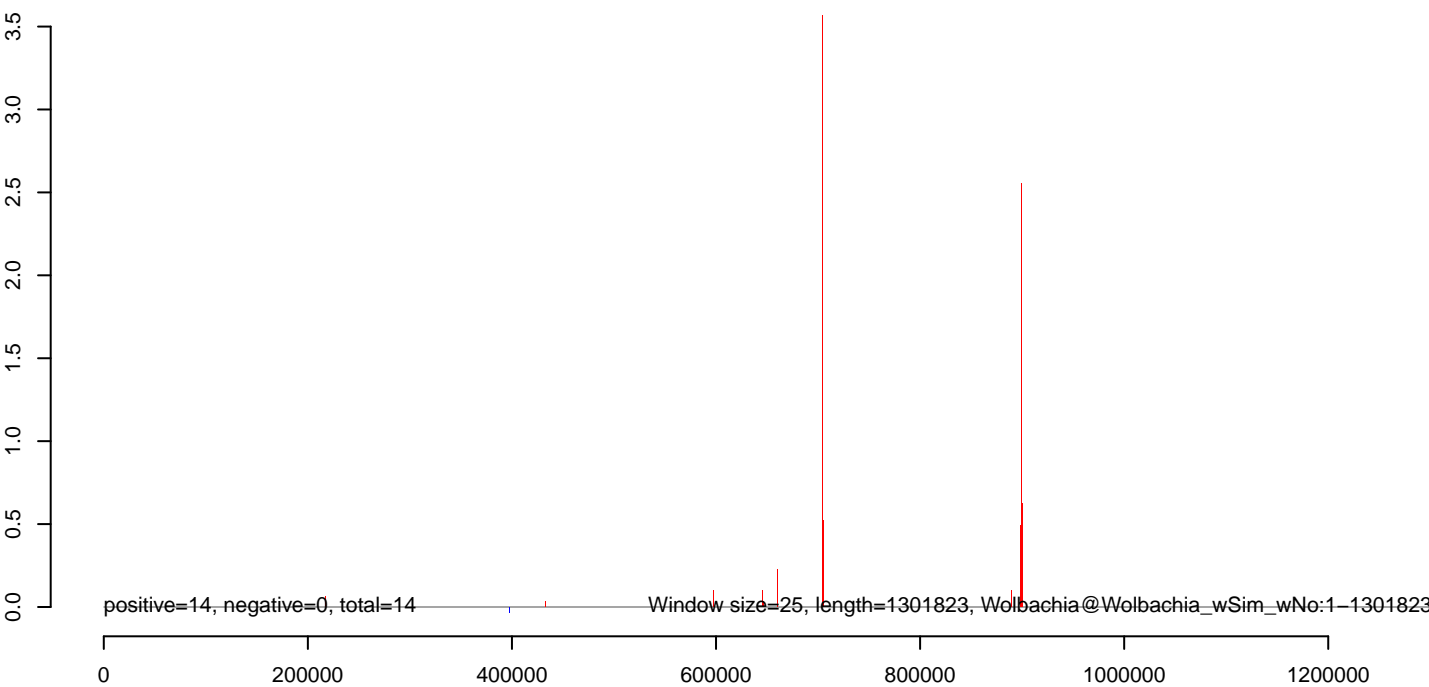
AeAeg_Aag2.TC.Dmem.18_23.rep



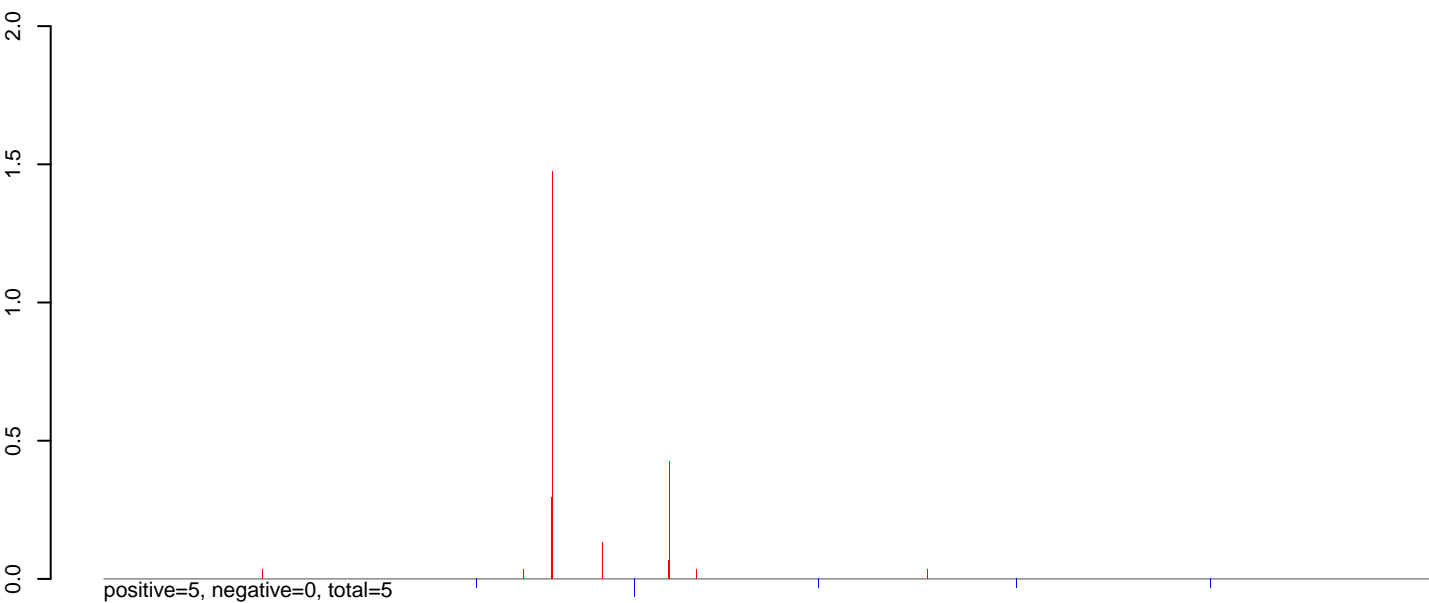
AeAeg_Aag2.TC.Dmem.24_35.rep



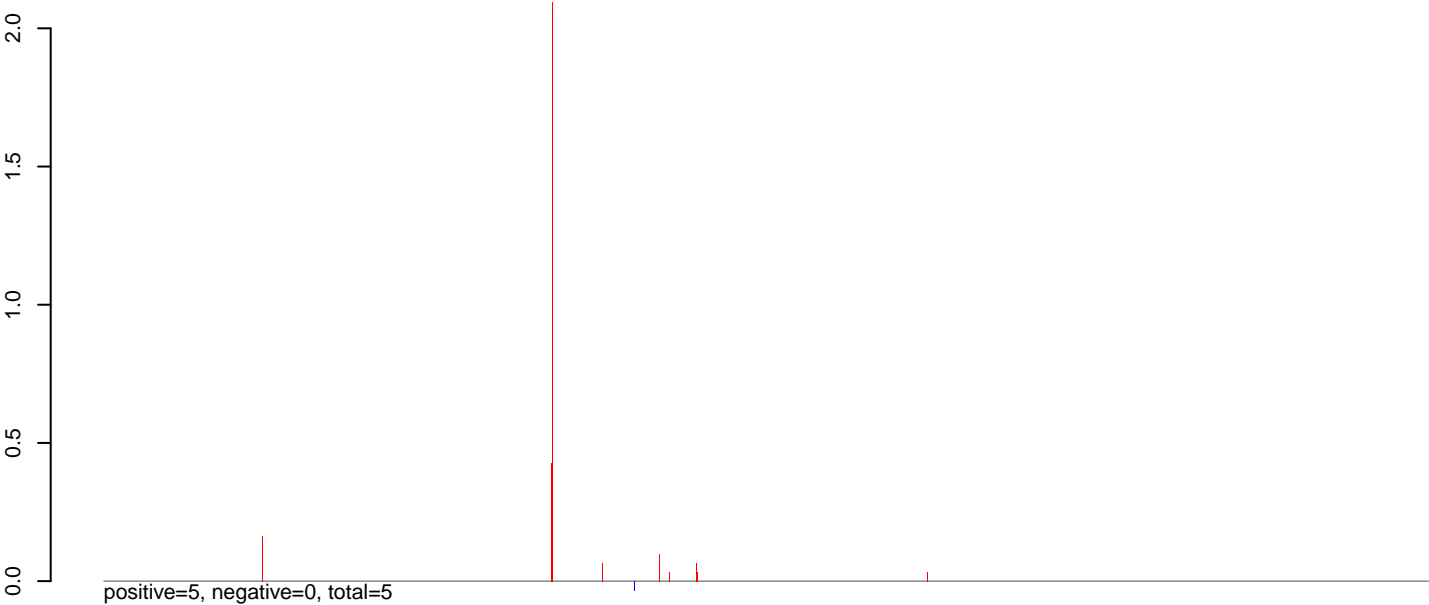
AeAeg_Aag2.TC.Dmem.rep



AeAeg_Aag2.TC.Dmem.18_23.rep



AeAeg_Aag2.TC.Dmem.24_35.rep



AeAeg_Aag2.TC.Dmem.rep

