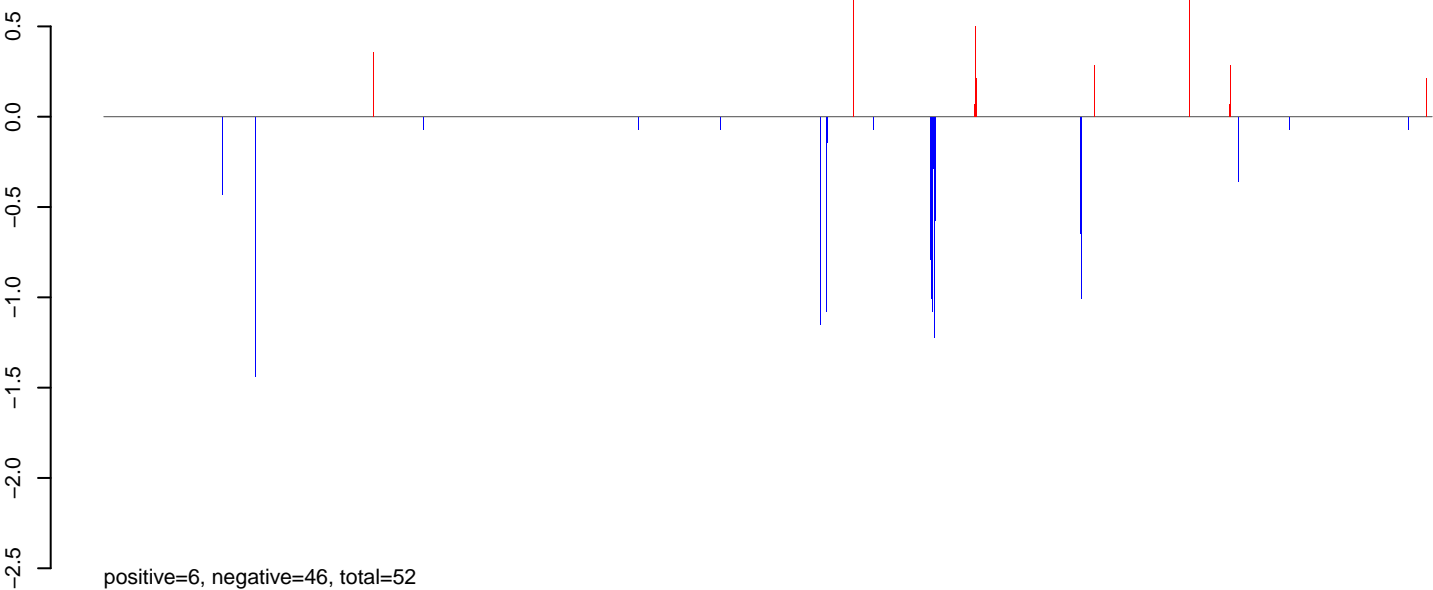
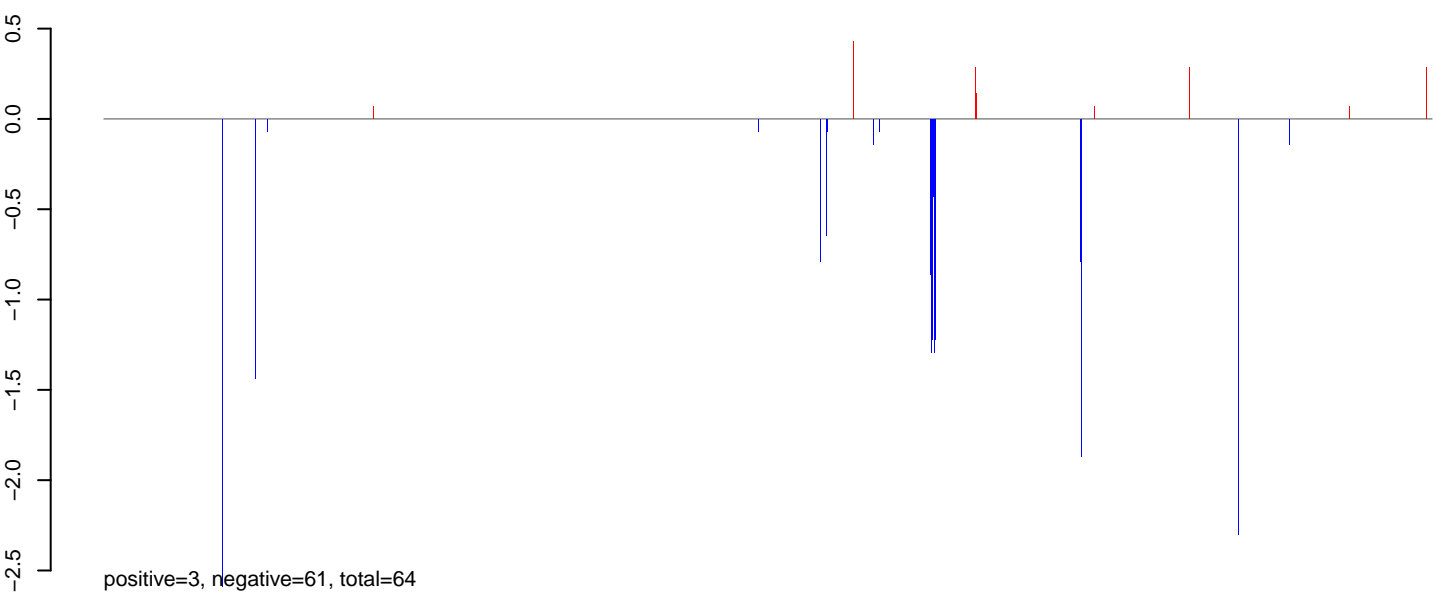


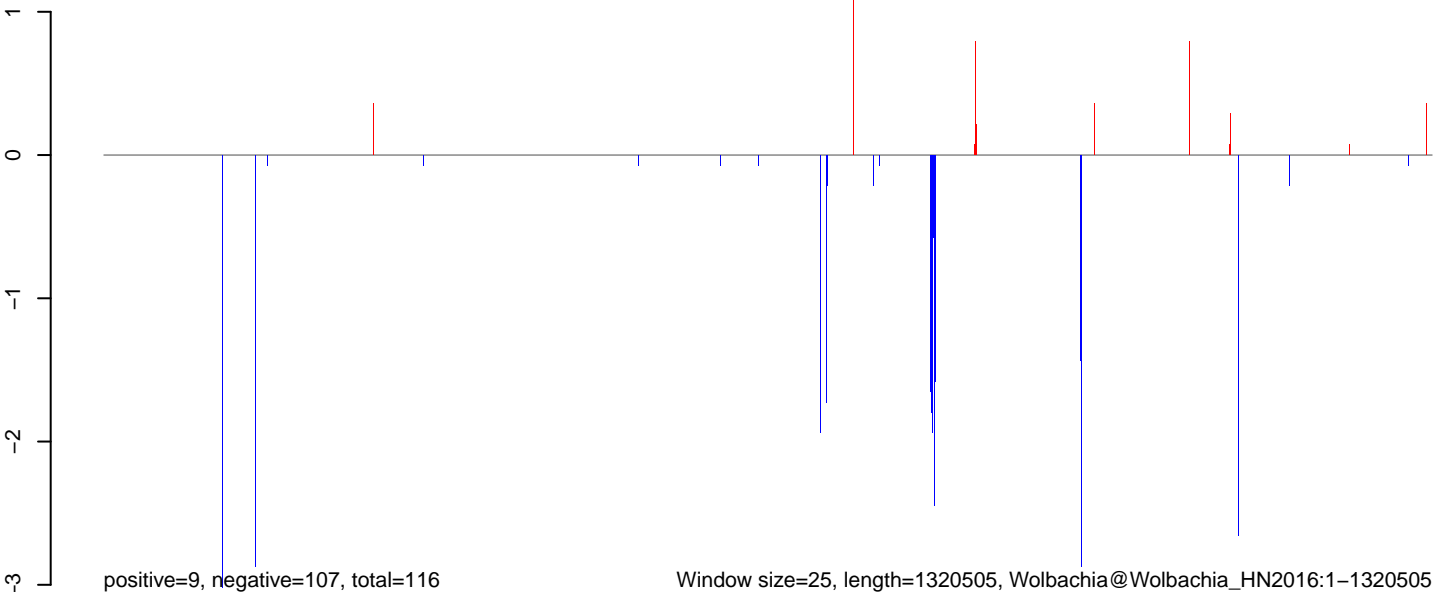
AeAeg_Aag2.TC.M3.18_23.rep



AeAeg_Aag2.TC.M3.24_35.rep

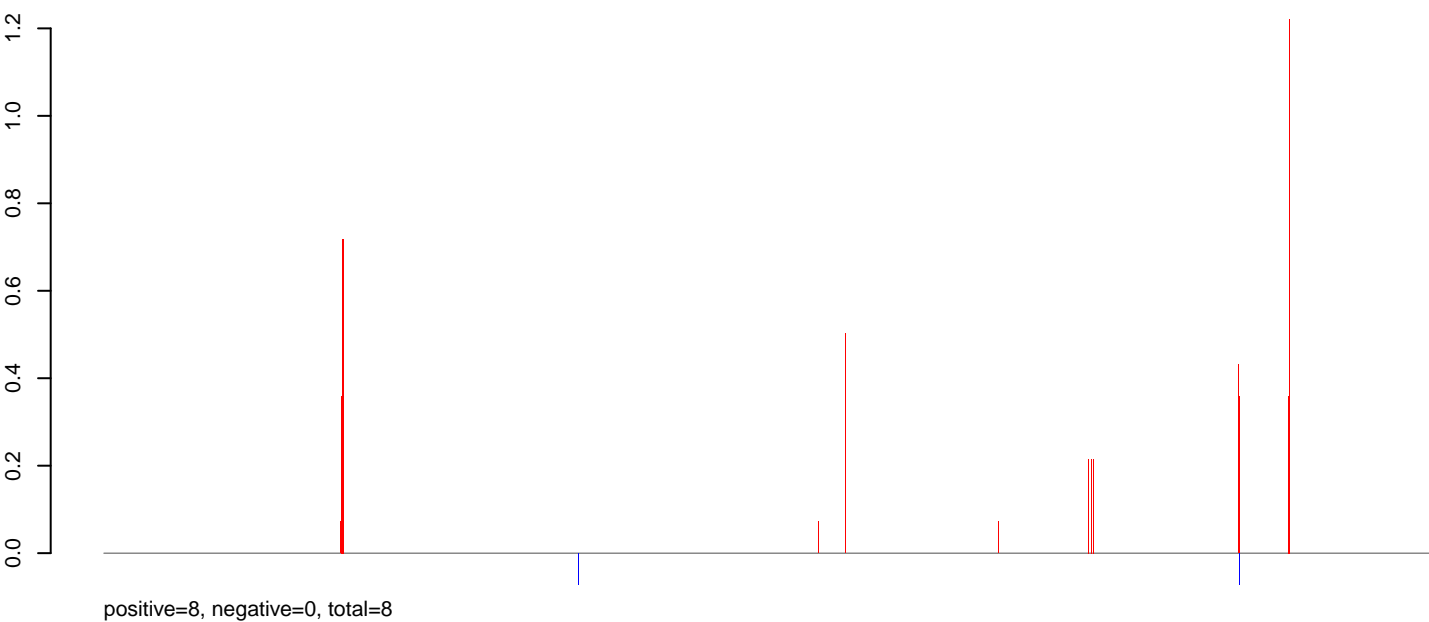


AeAeg_Aag2.TC.M3.rep

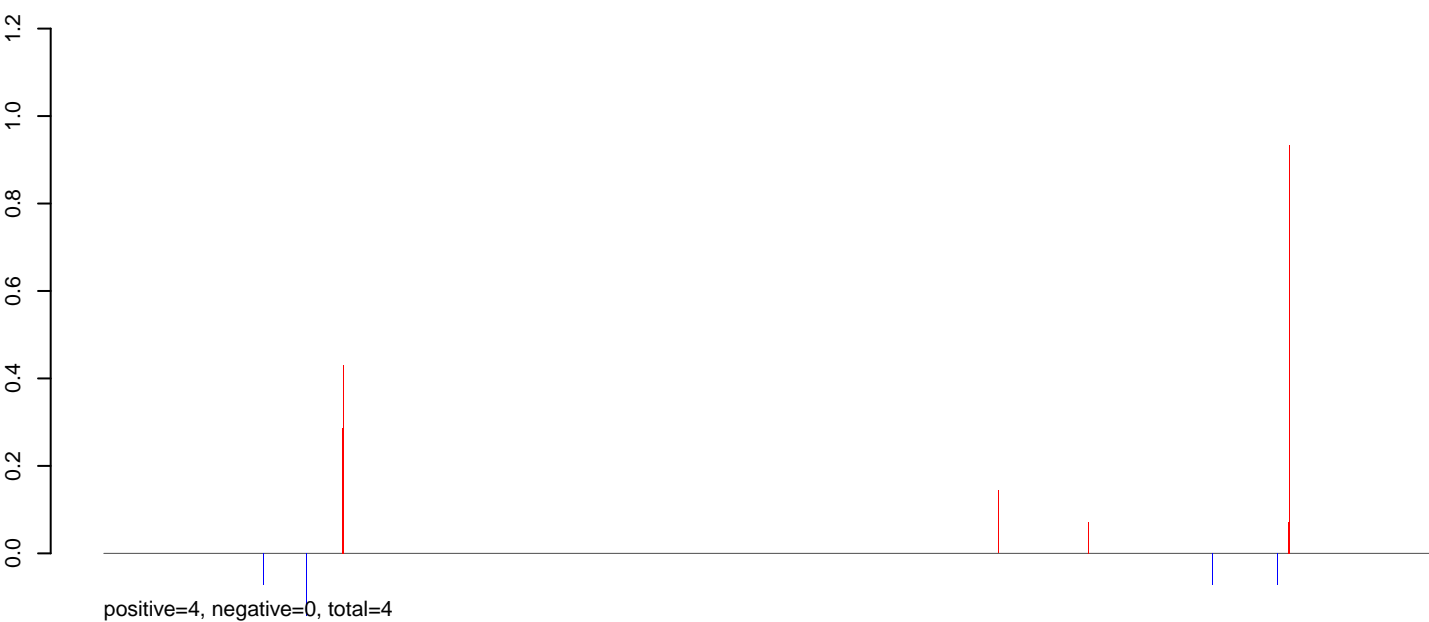


0 200000 400000 600000 800000 1000000 1200000

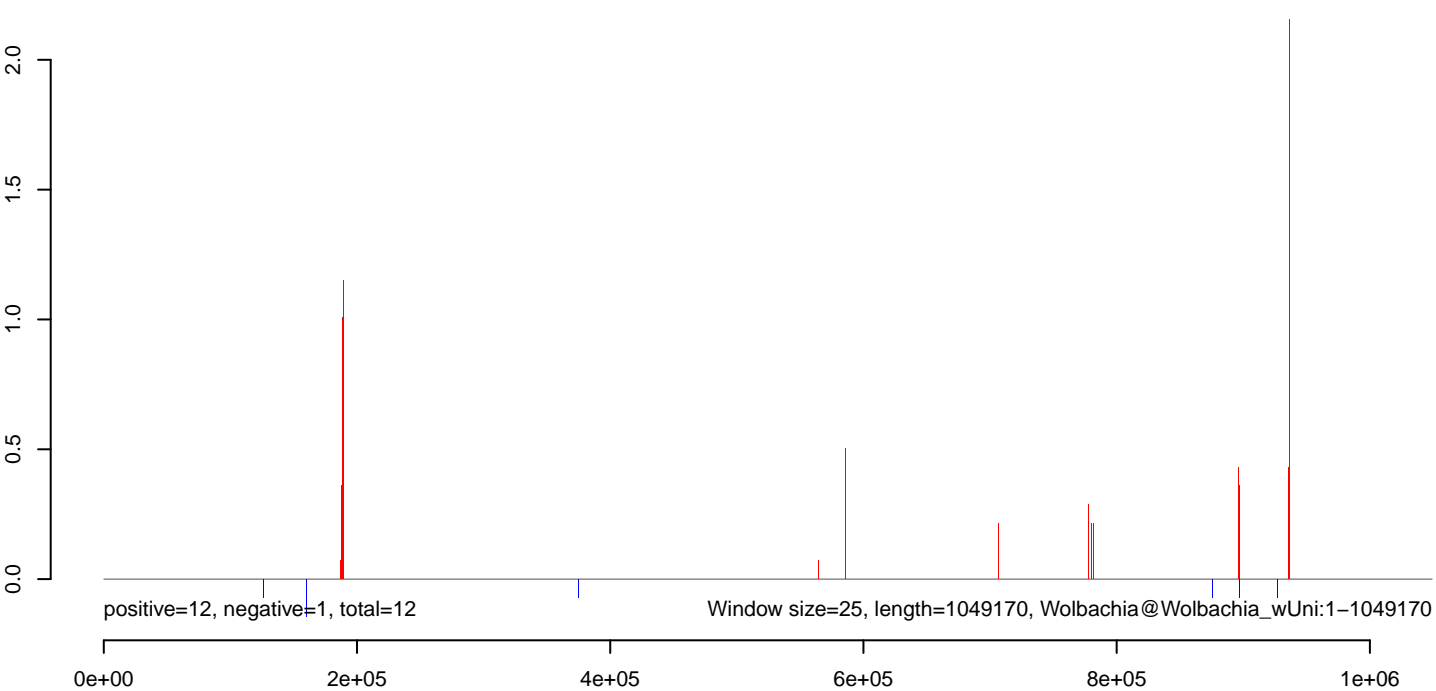
AeAeg_Aag2.TC.M3.18_23.rep



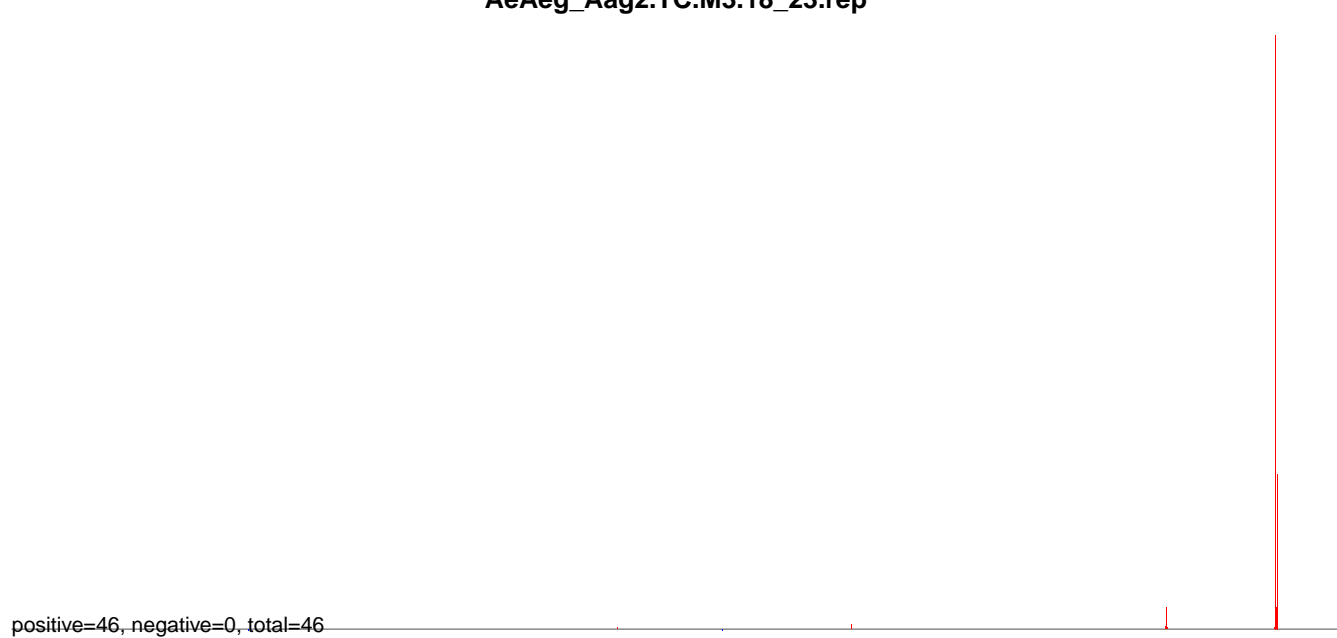
AeAeg_Aag2.TC.M3.24_35.rep



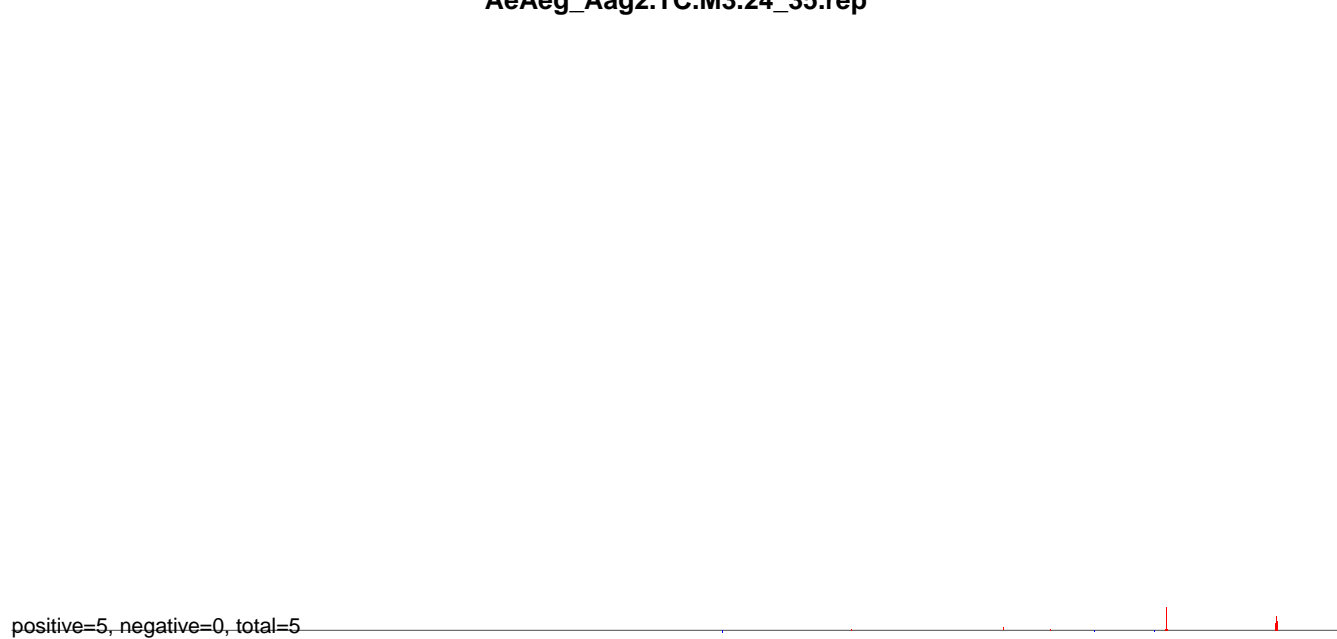
AeAeg_Aag2.TC.M3.rep



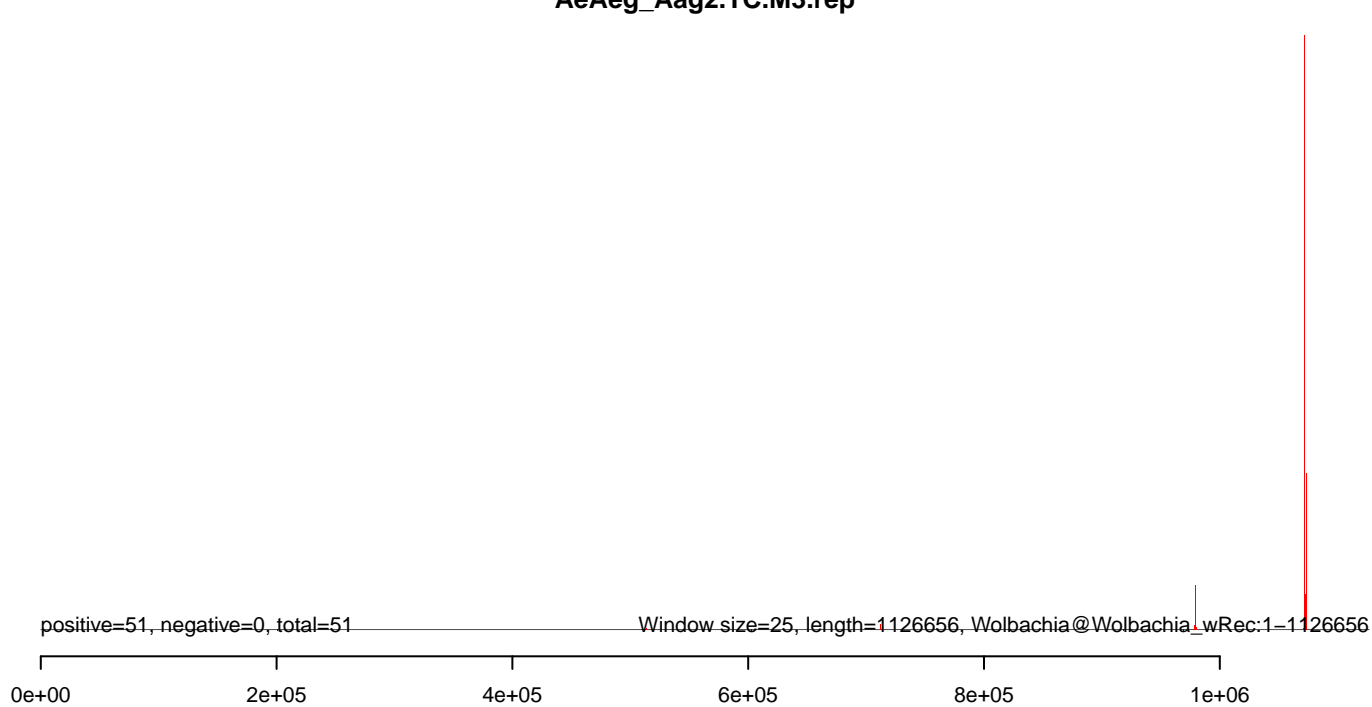
AeAeg_Aag2.TC.M3.18_23.rep



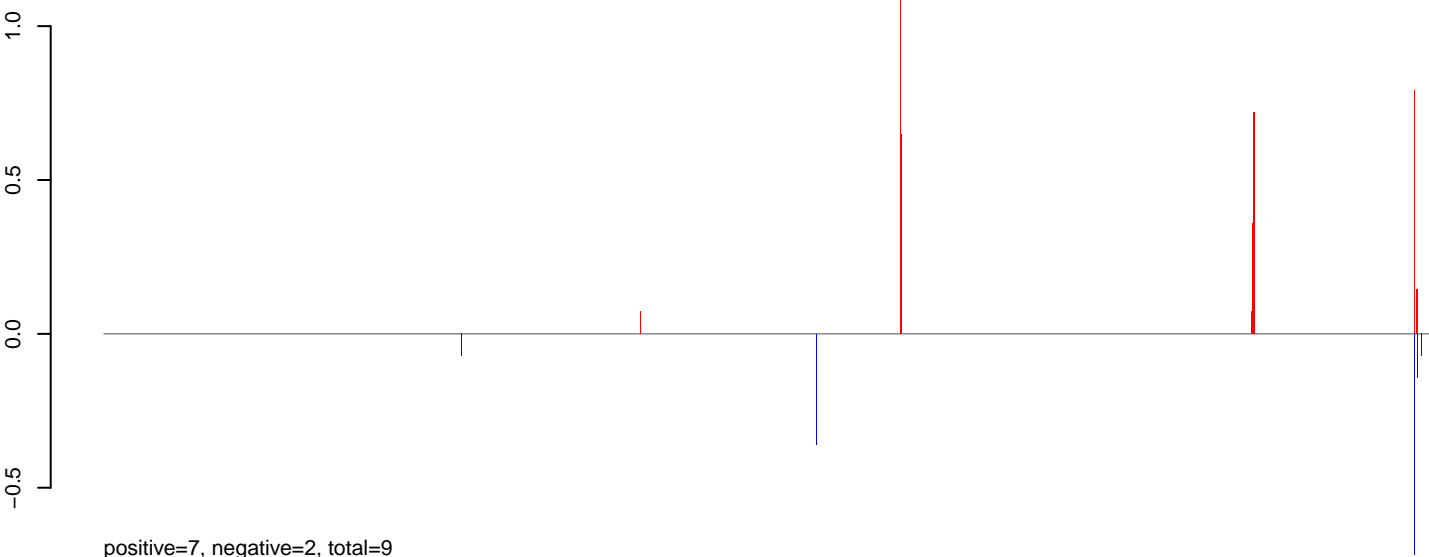
AeAeg_Aag2.TC.M3.24_35.rep



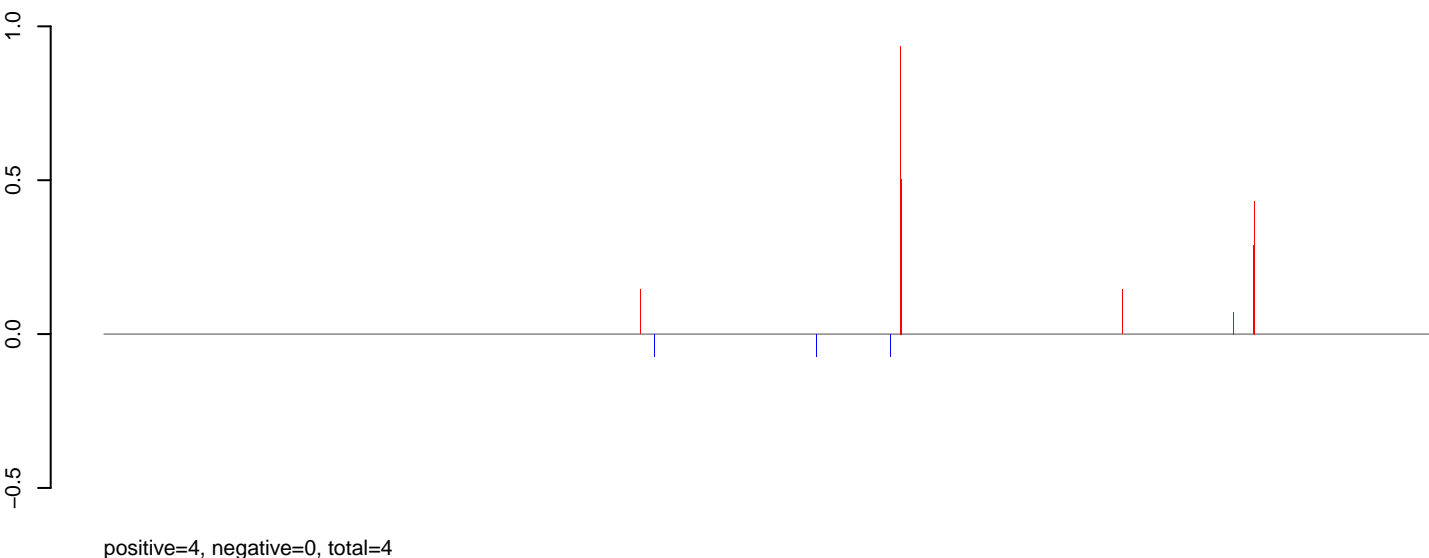
AeAeg_Aag2.TC.M3.rep



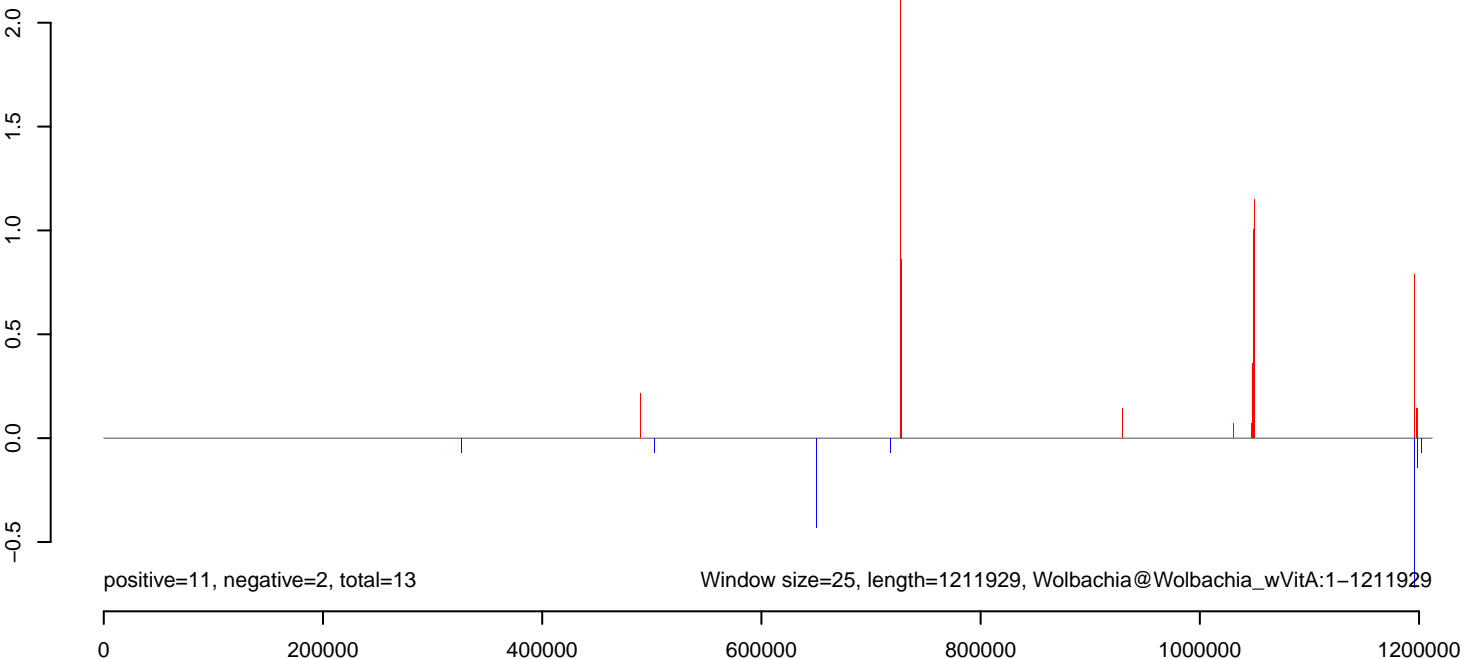
AeAeg_Aag2.TC.M3.18_23.rep



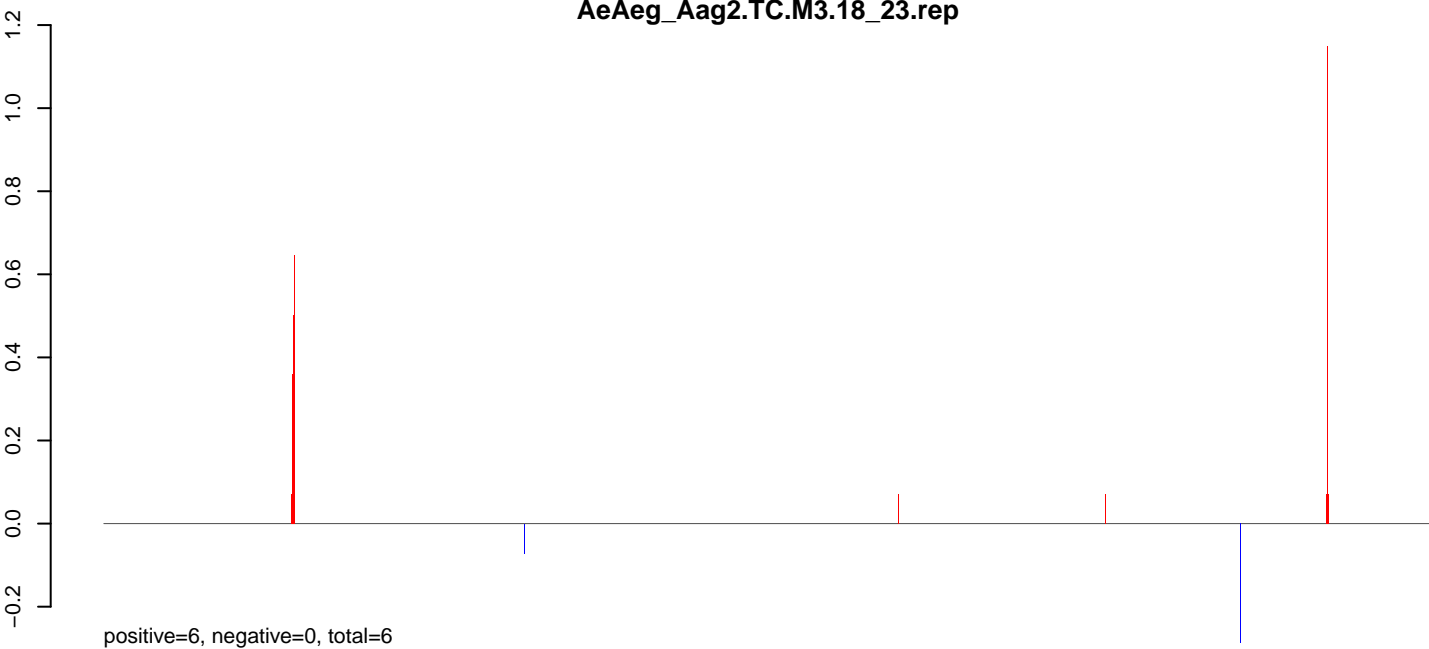
AeAeg_Aag2.TC.M3.24_35.rep



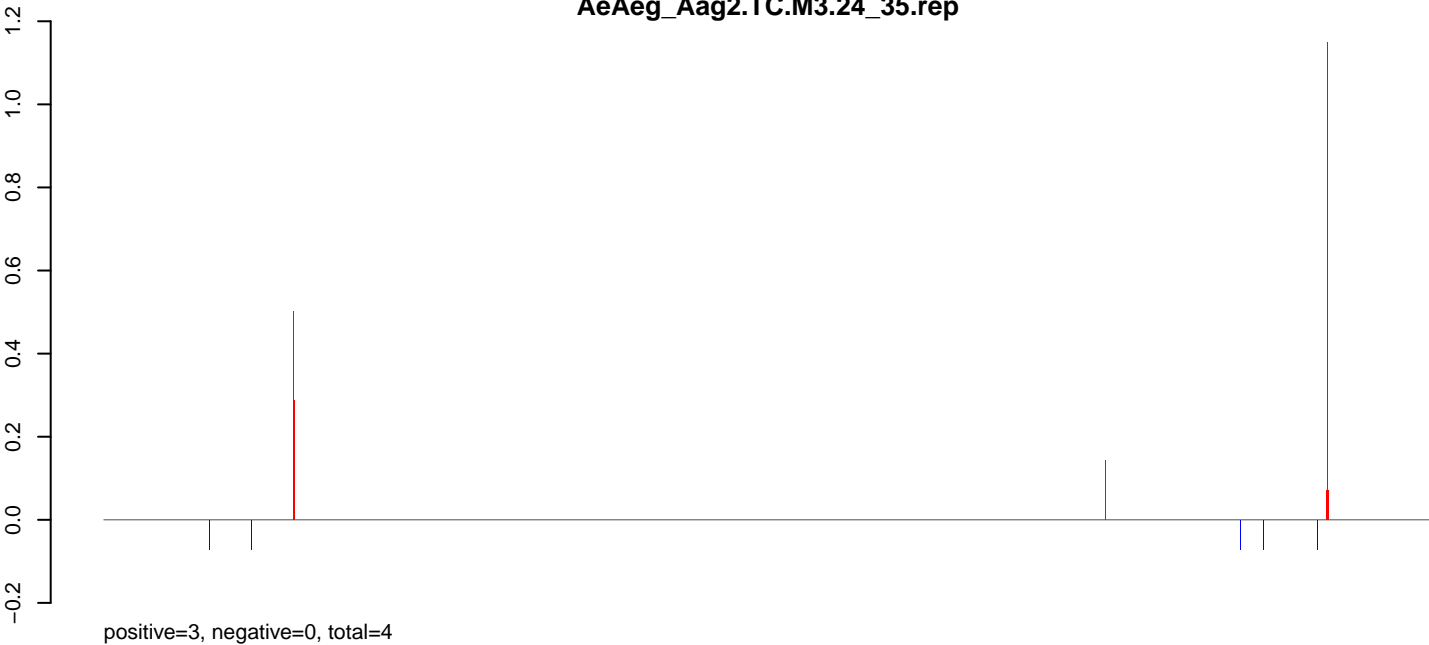
AeAeg_Aag2.TC.M3.rep



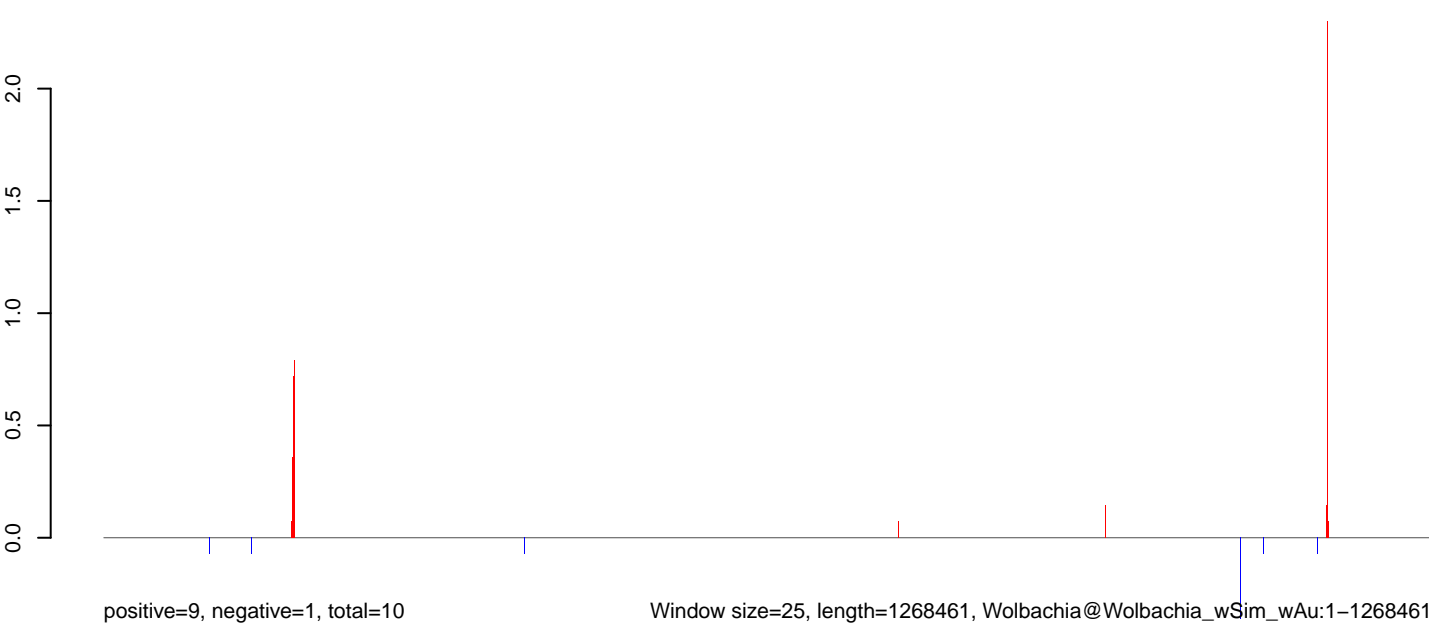
AeAeg_Aag2.TC.M3.18_23.rep



AeAeg_Aag2.TC.M3.24_35.rep



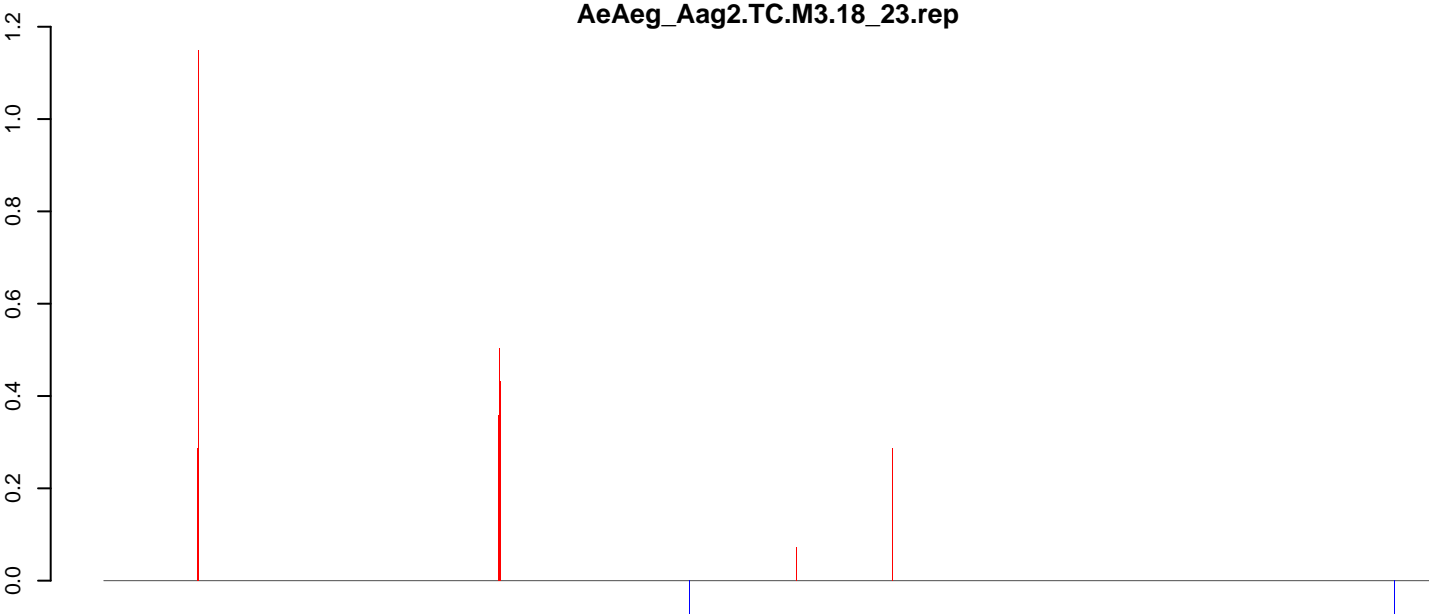
AeAeg_Aag2.TC.M3.rep



Window size=25, length=1268461, Wolbachia@Wolbachia_wSim_wAu:1-1268461

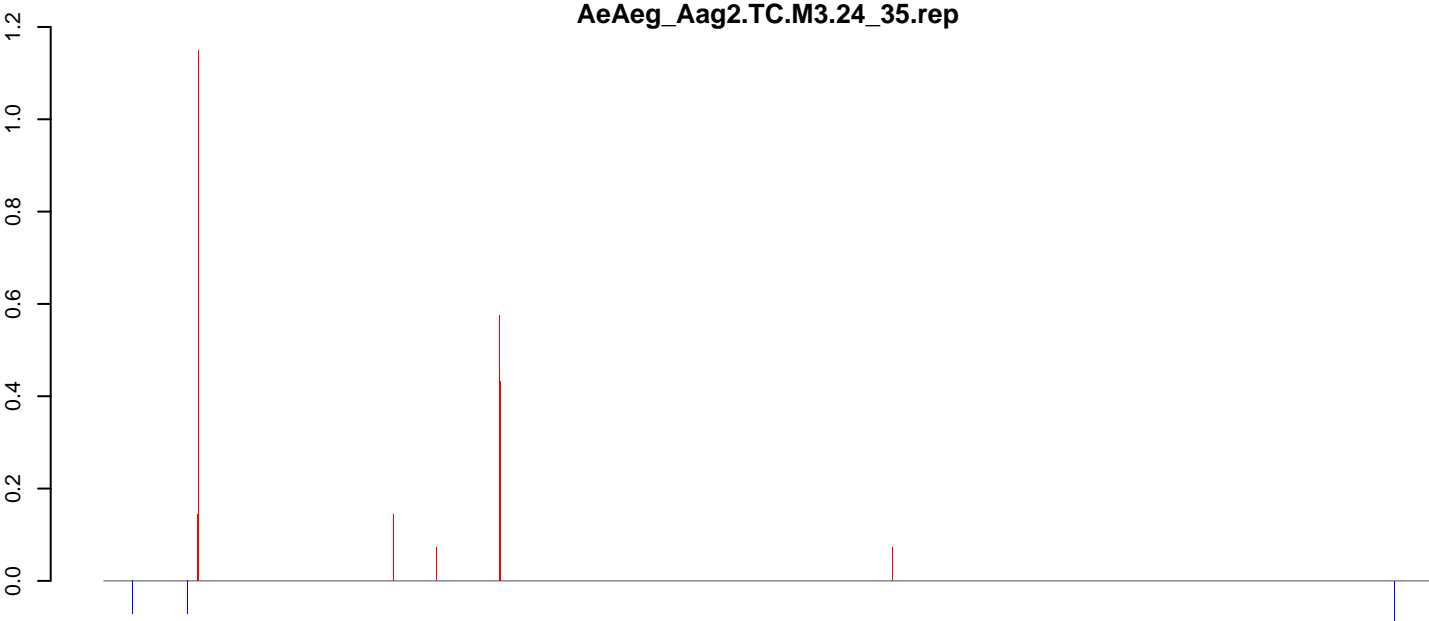
0 200000 400000 600000 800000 1000000 1200000

AeAeg_Aag2.TC.M3.18_23.rep



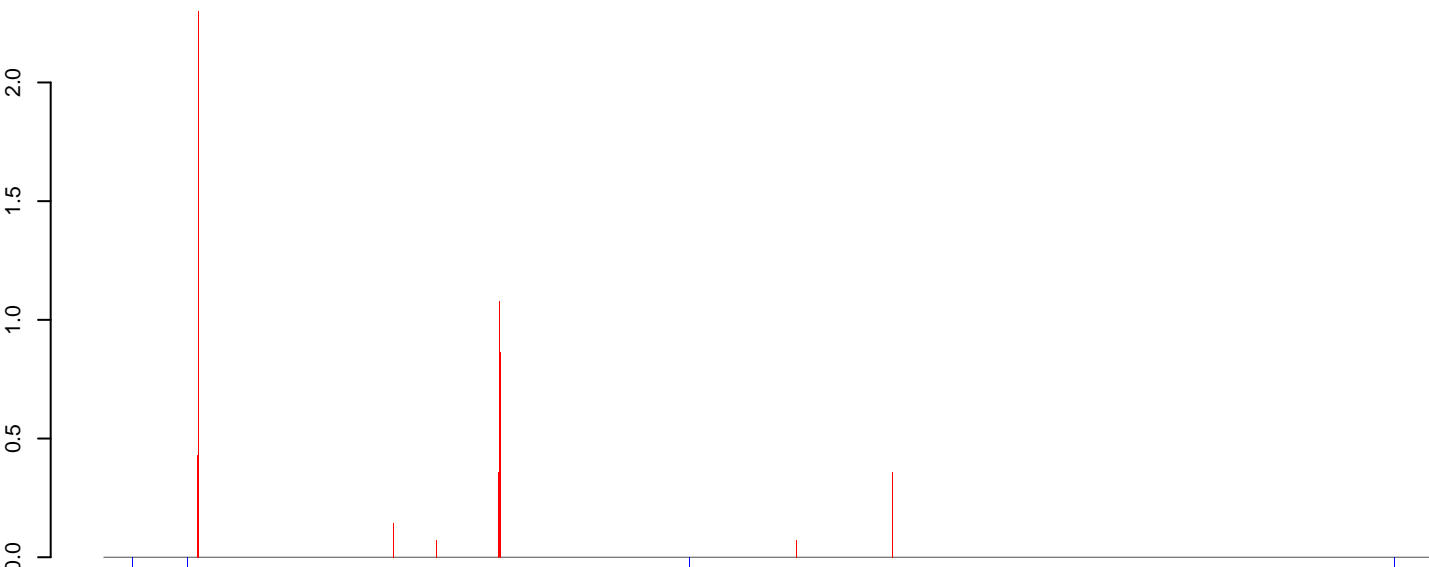
positive=6, negative=0, total=6

AeAeg_Aag2.TC.M3.24_35.rep



positive=3, negative=0, total=4

AeAeg_Aag2.TC.M3.rep

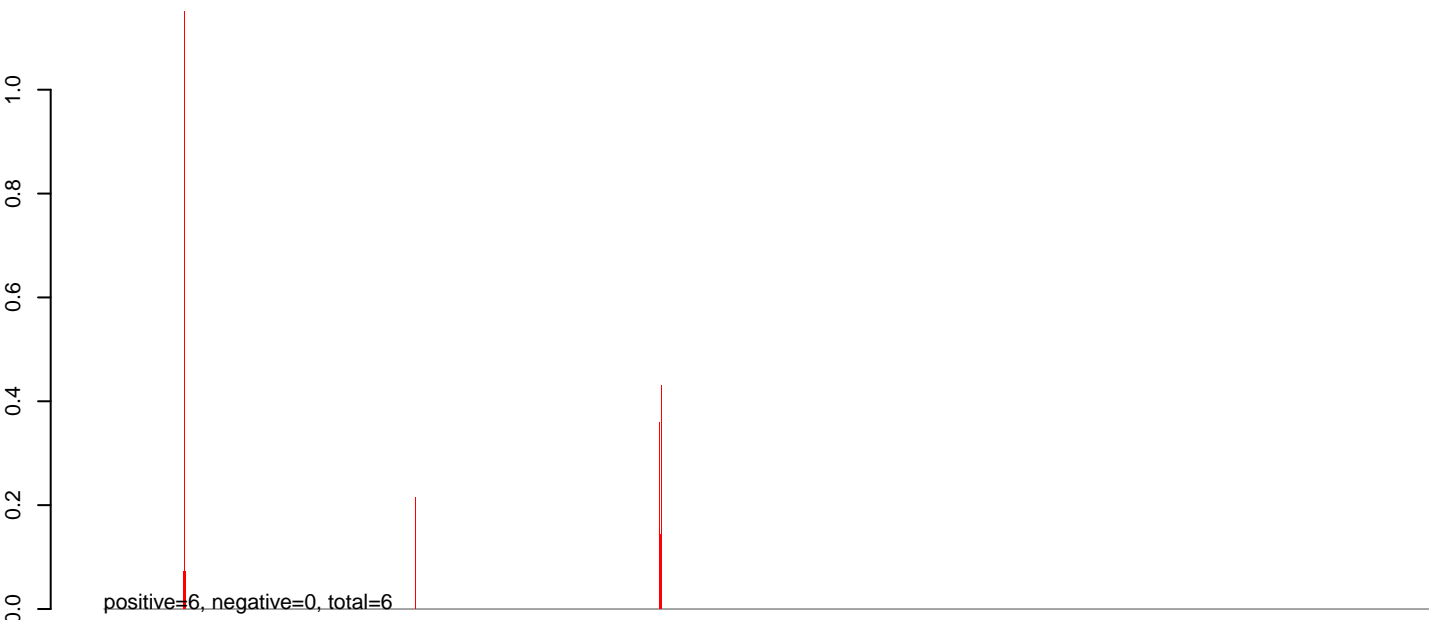


positive=9, negative=0, total=10

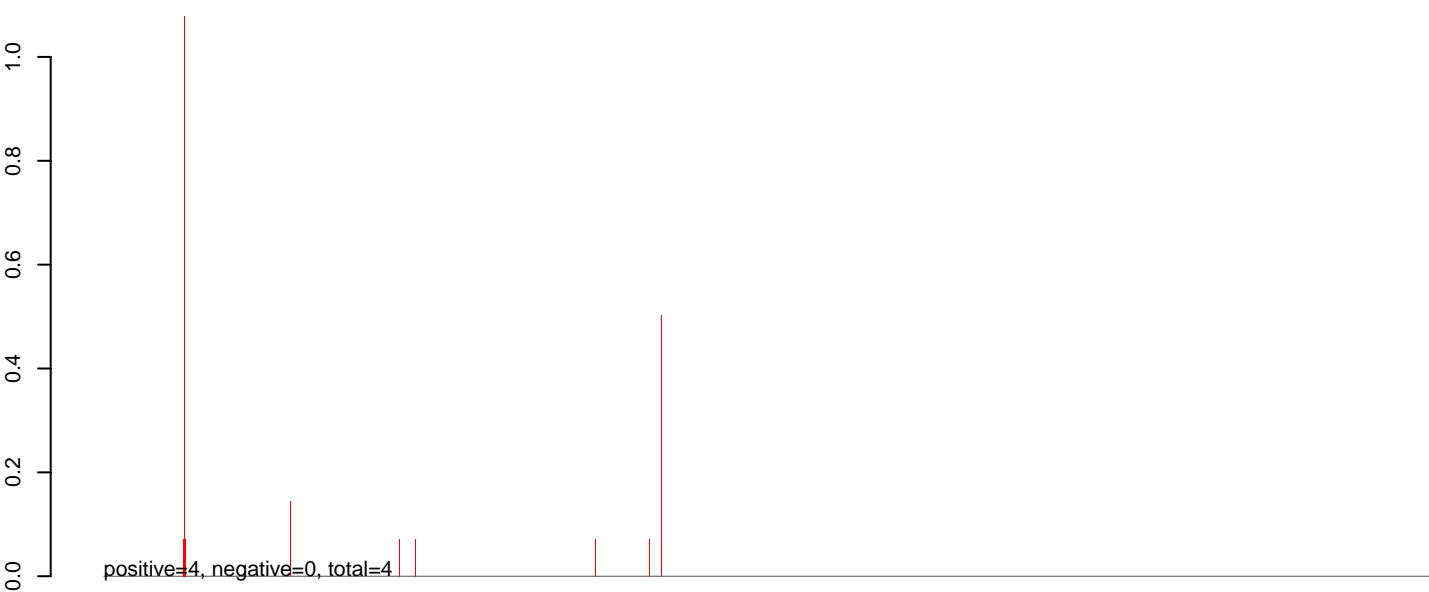
Window size=25, length=1239155, Wolbachia@Wolbachia_wMelPop:1-1239155

0 200000 400000 600000 800000 1000000 1200000

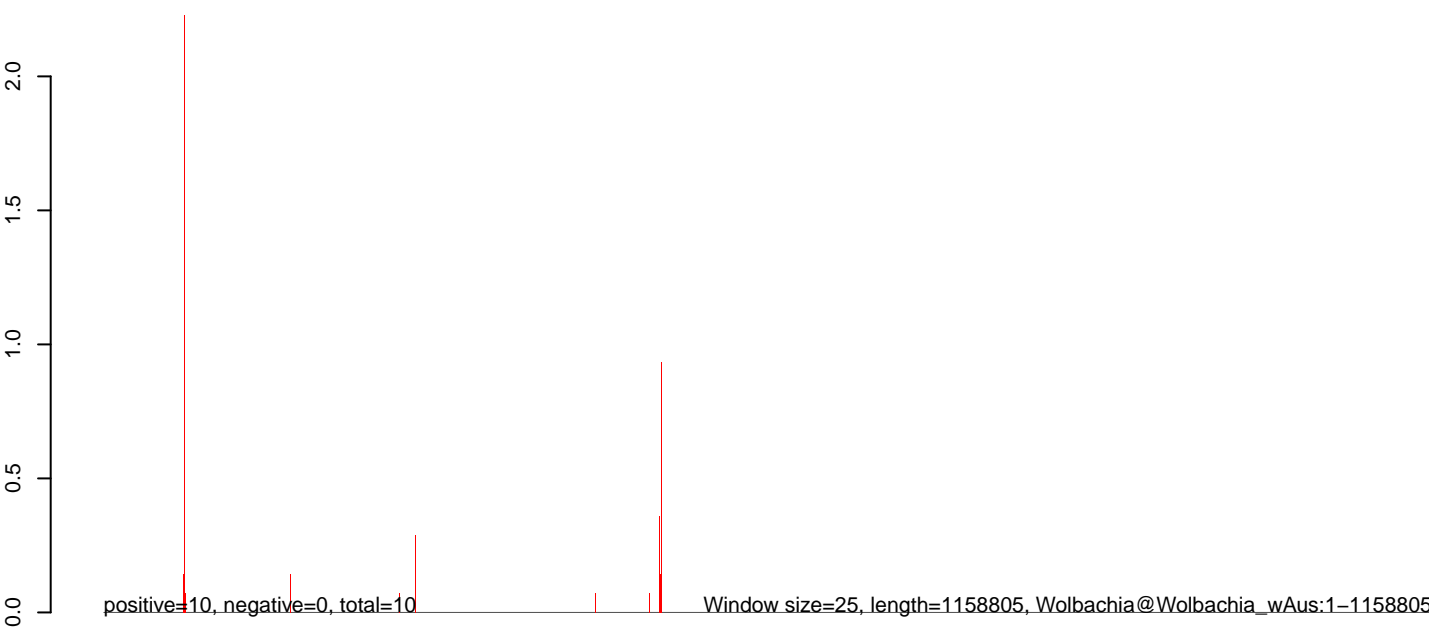
AeAeg_Aag2.TC.M3.18_23.rep



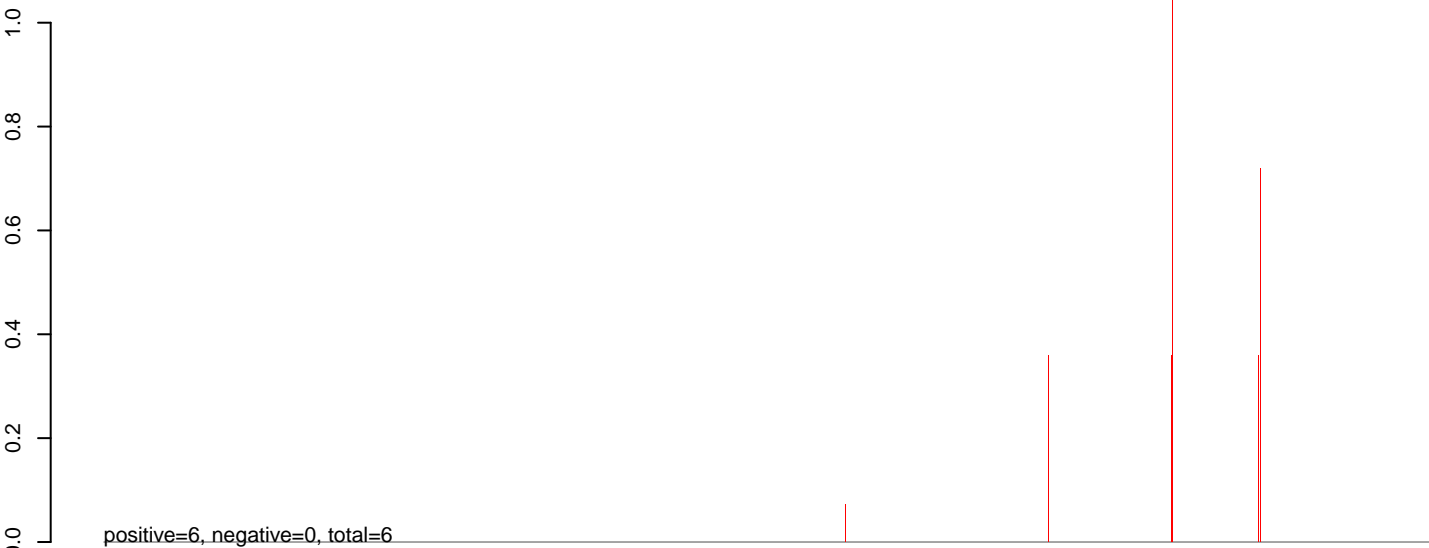
AeAeg_Aag2.TC.M3.24_35.rep



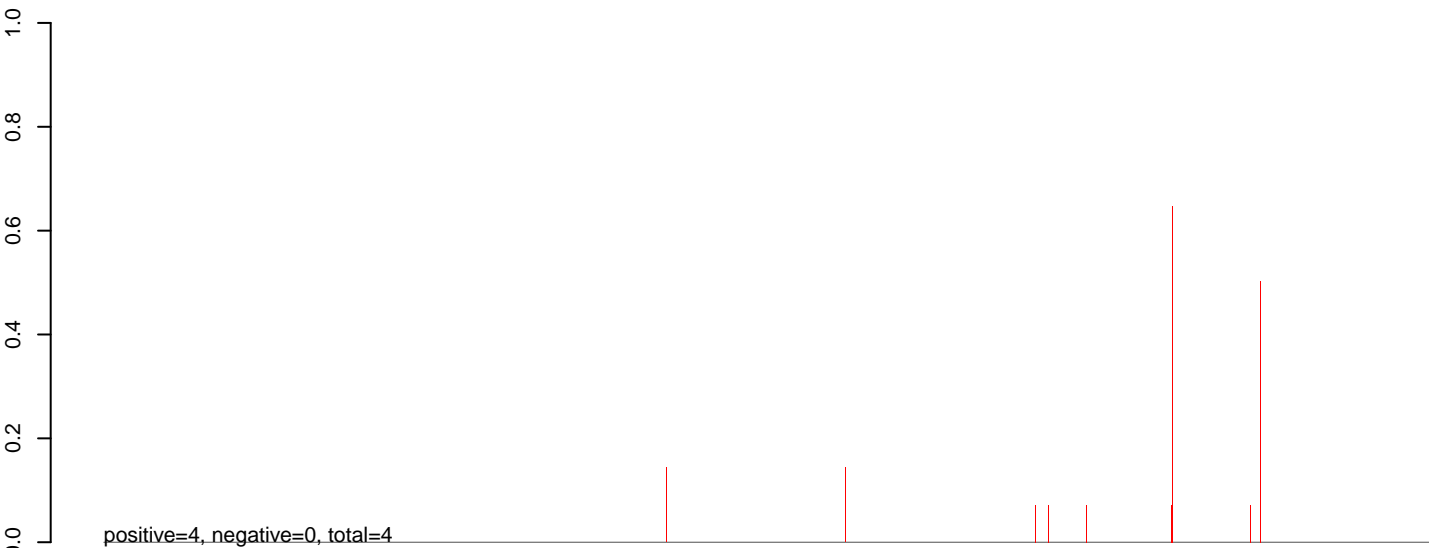
AeAeg_Aag2.TC.M3.rep



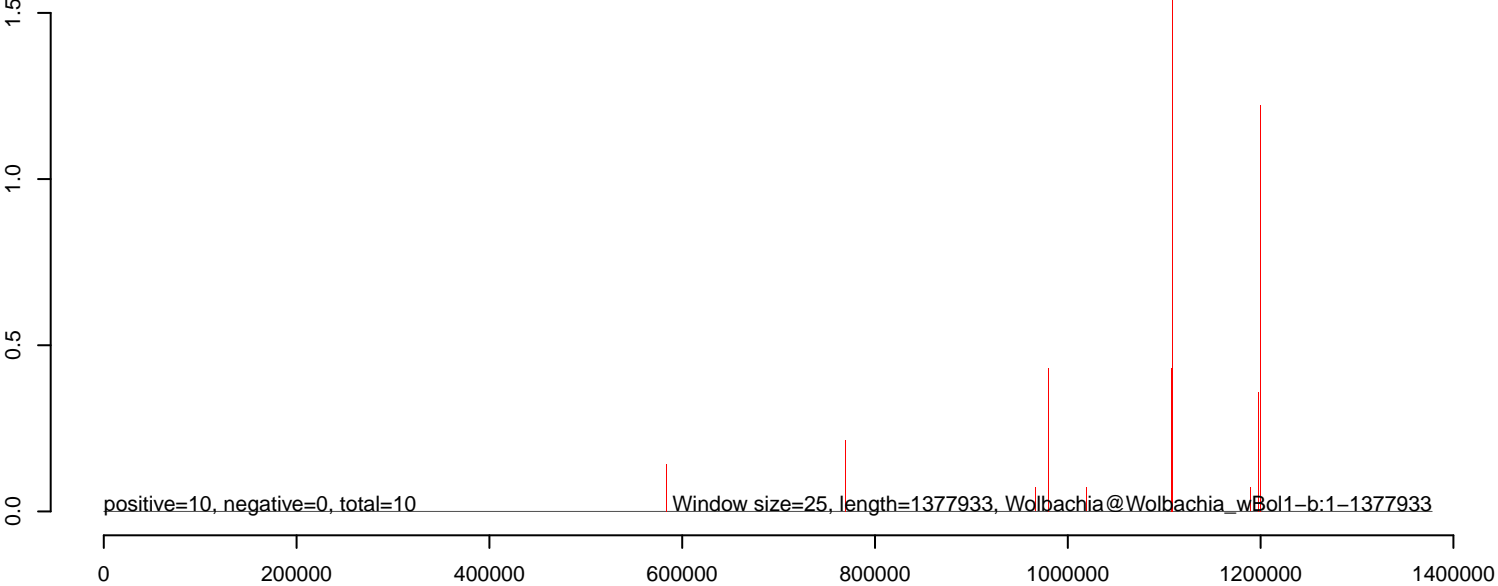
AeAeg_Aag2.TC.M3.18_23.rep



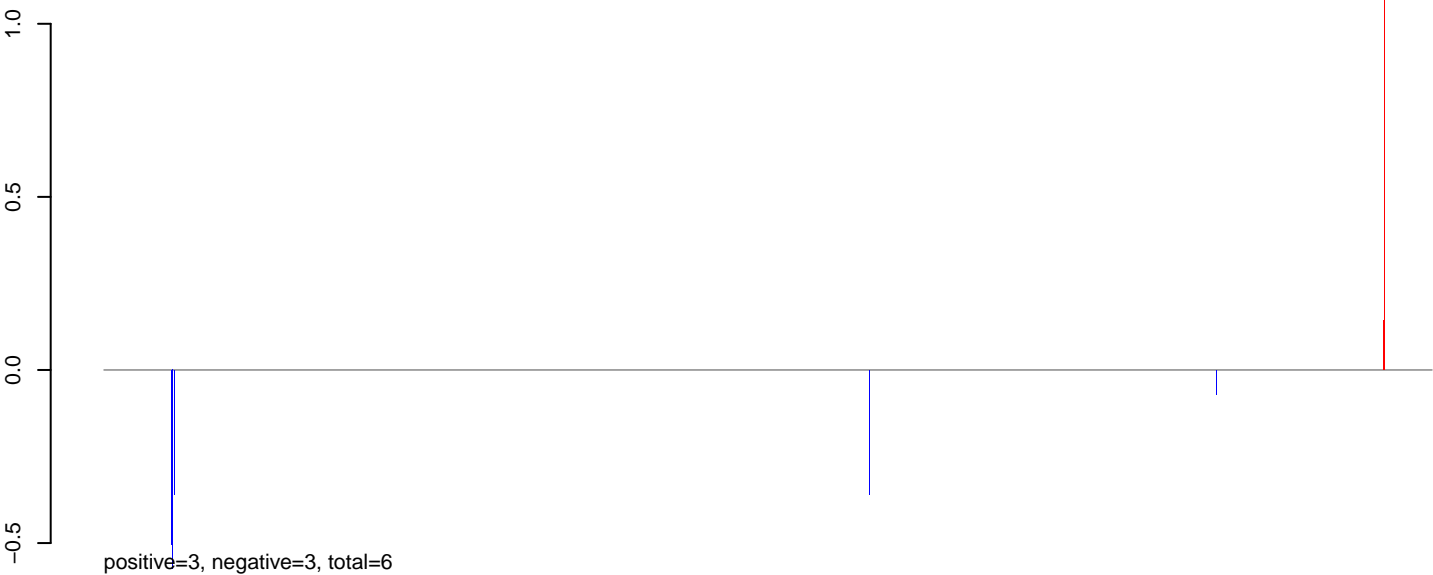
AeAeg_Aag2.TC.M3.24_35.rep



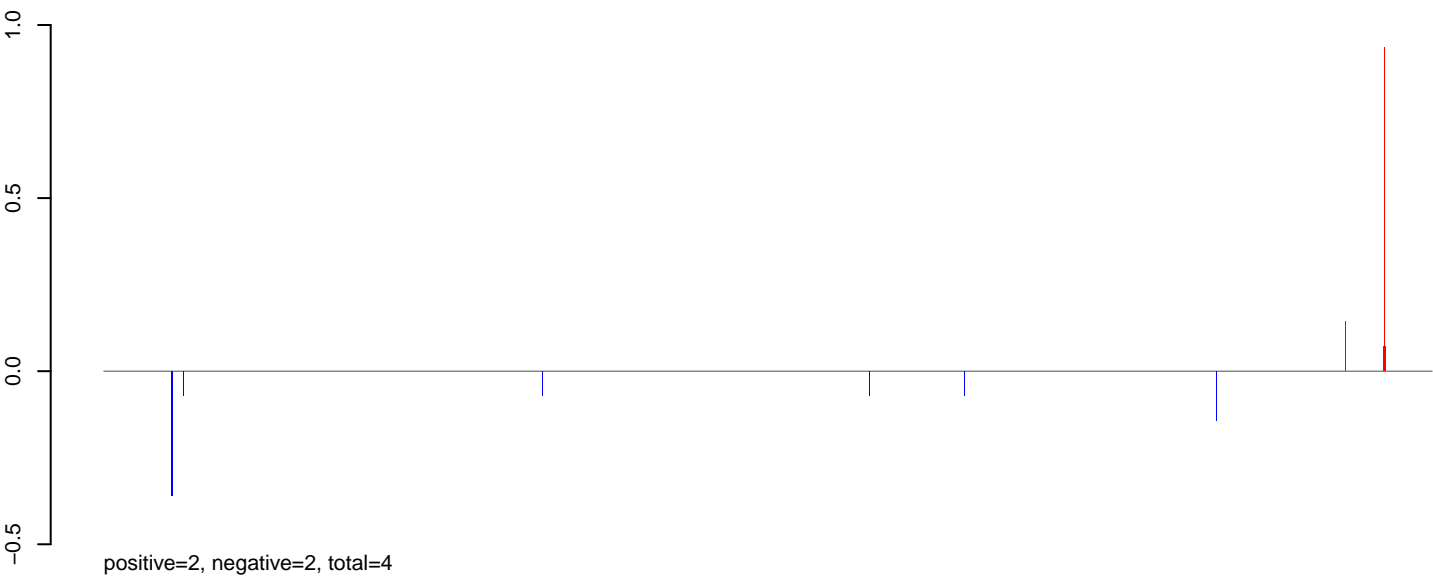
AeAeg_Aag2.TC.M3.rep



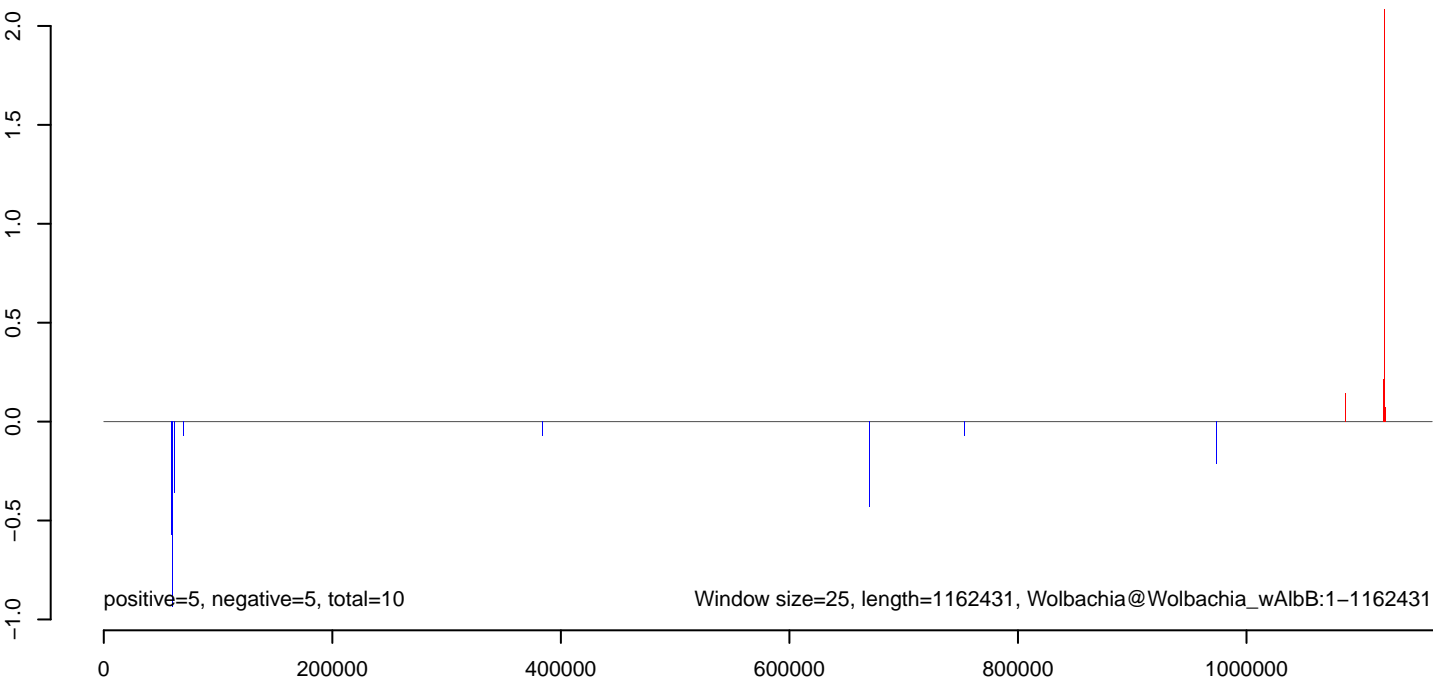
AeAeg_Aag2.TC.M3.18_23.rep



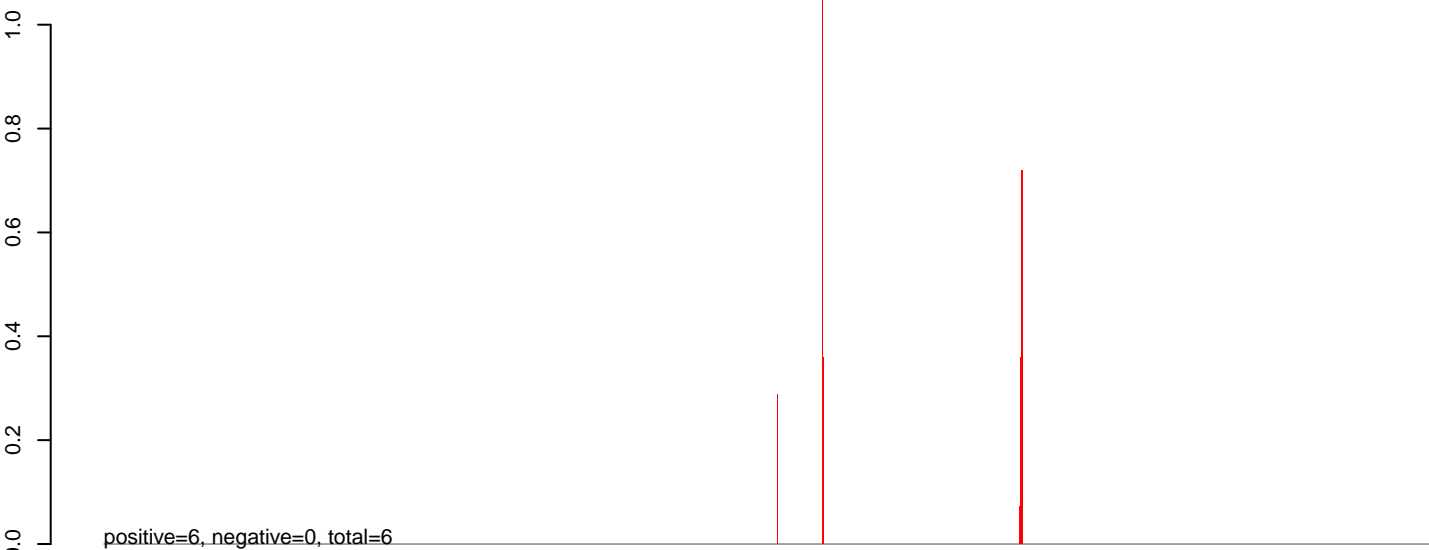
AeAeg_Aag2.TC.M3.24_35.rep



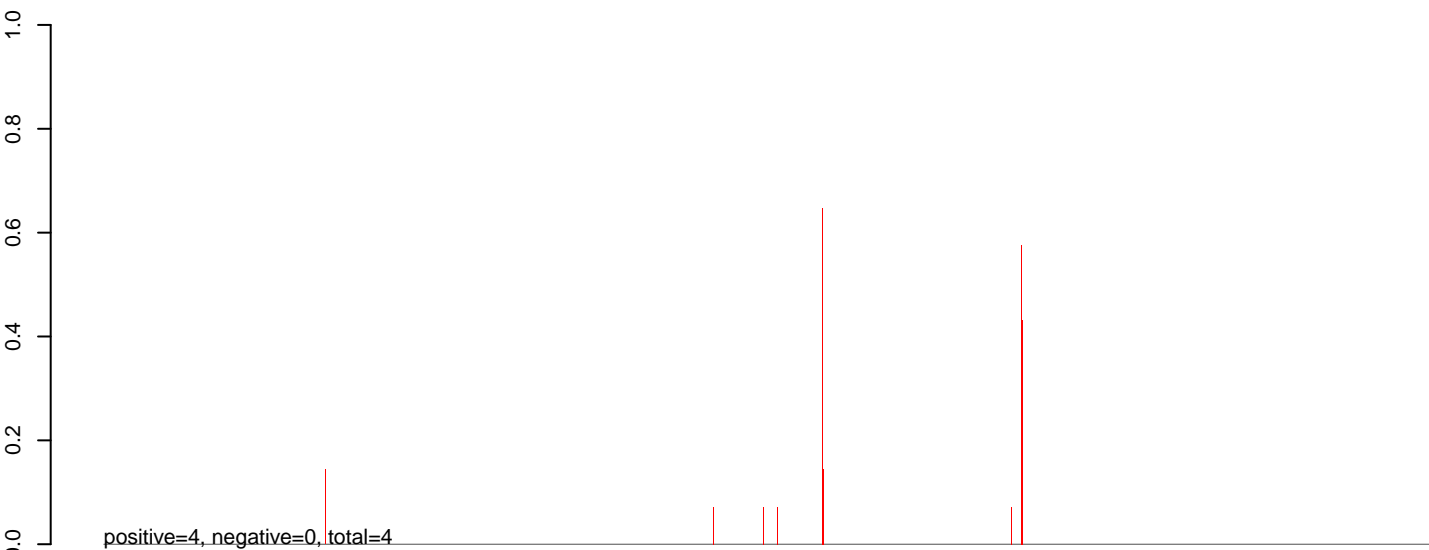
AeAeg_Aag2.TC.M3.rep



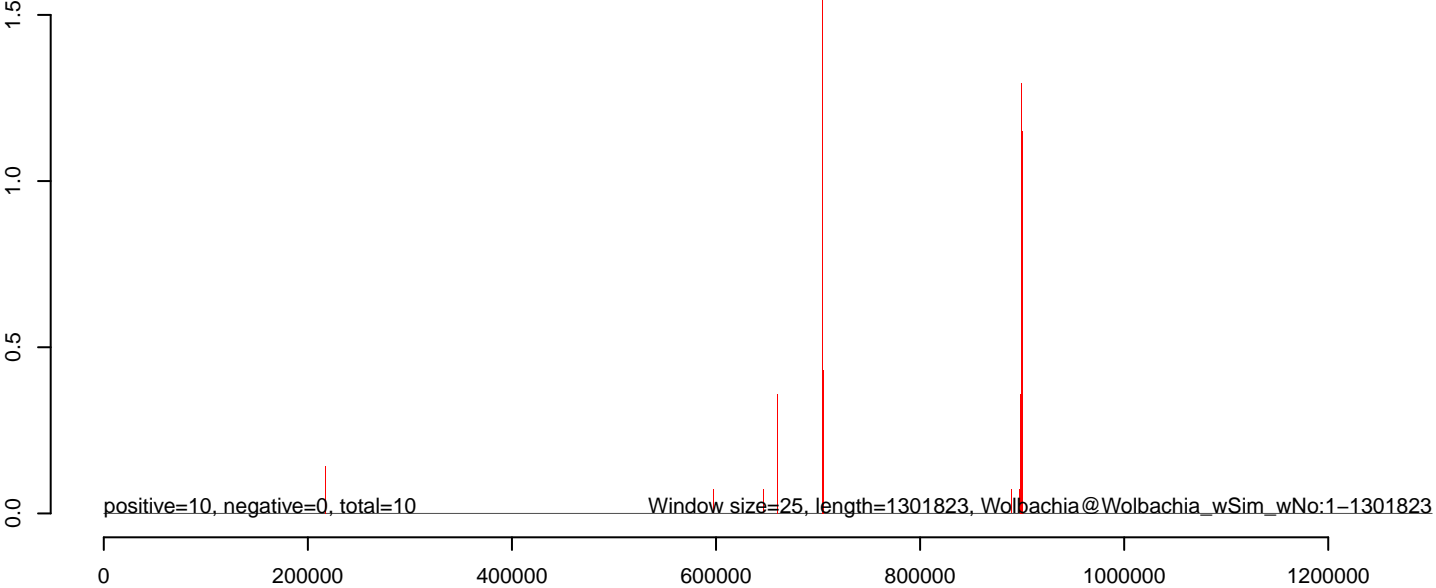
AeAeg_Aag2.TC.M3.18_23.rep



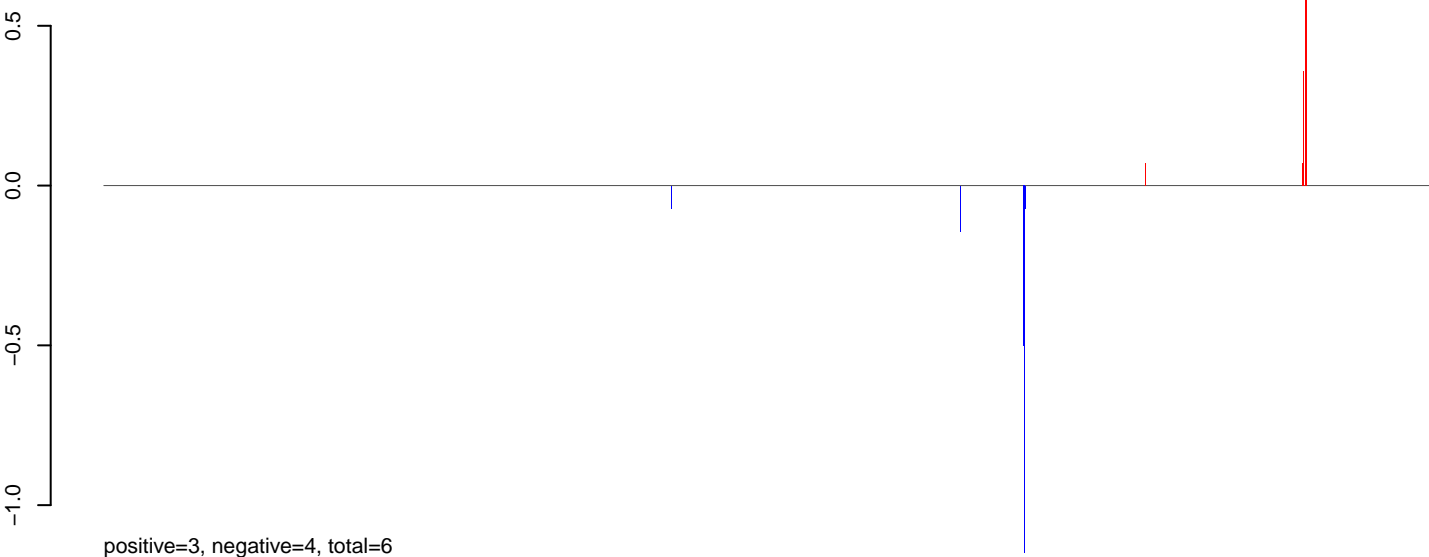
AeAeg_Aag2.TC.M3.24_35.rep



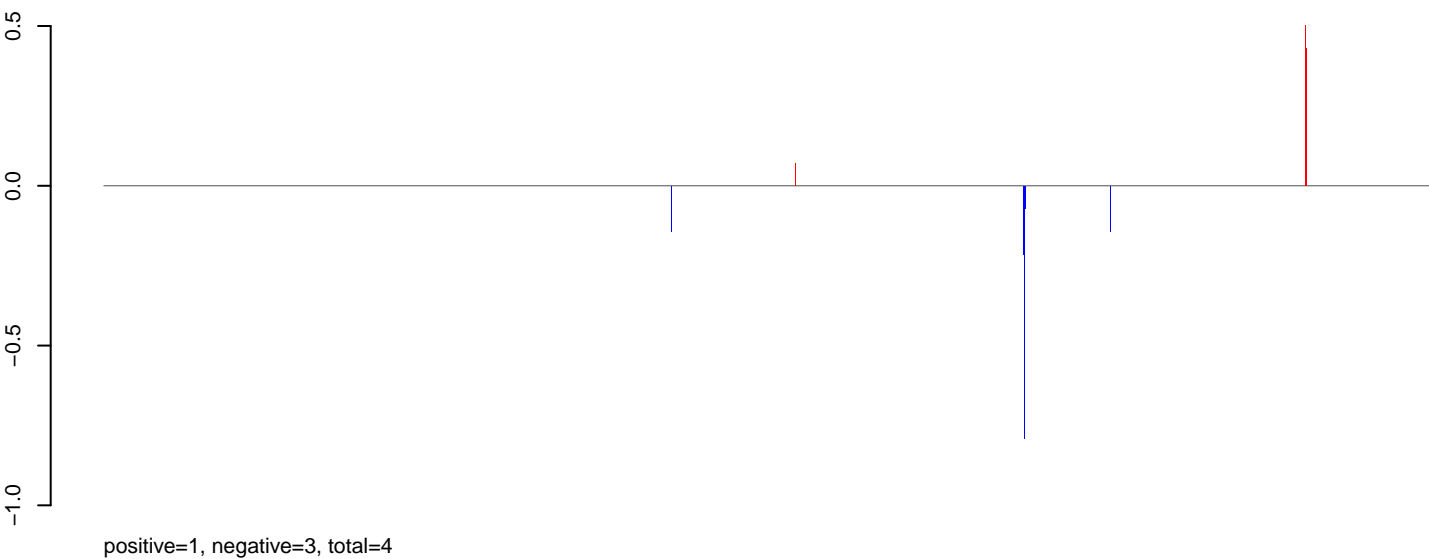
AeAeg_Aag2.TC.M3.rep



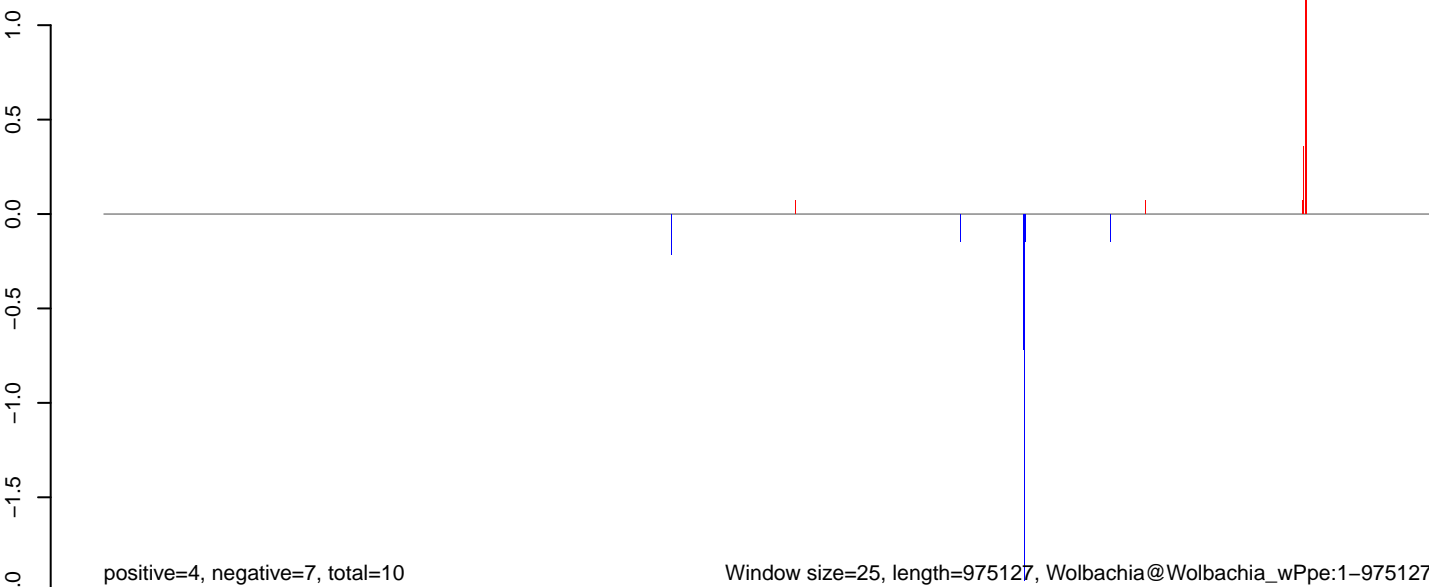
AeAeg_Aag2.TC.M3.18_23.rep



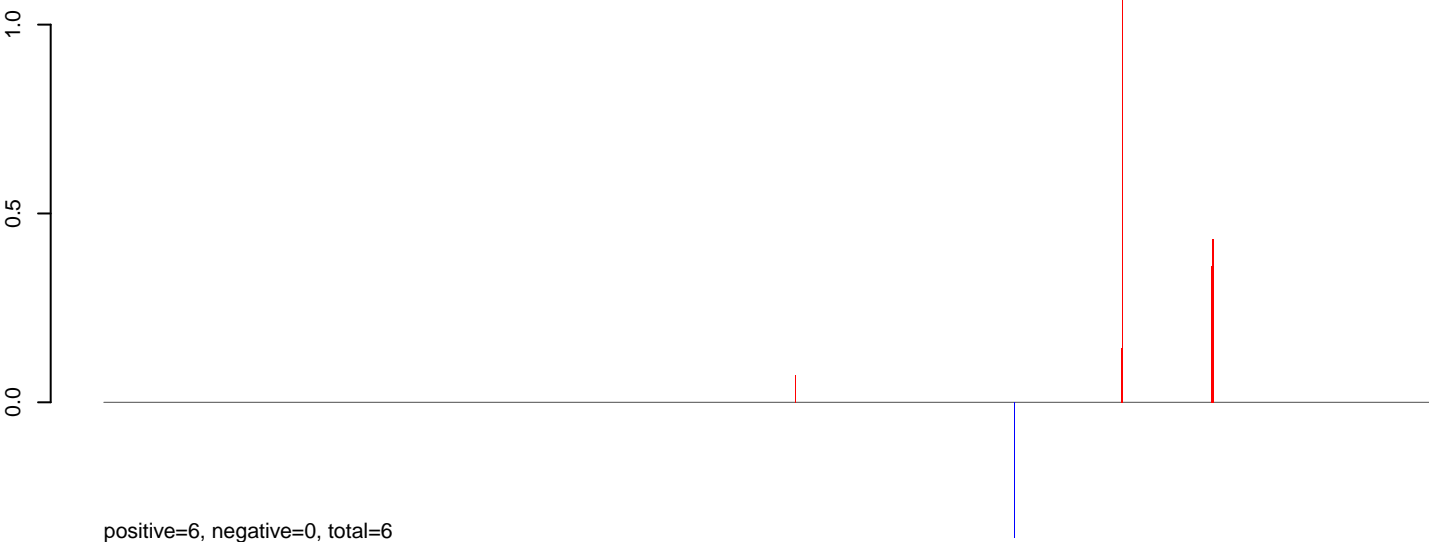
AeAeg_Aag2.TC.M3.24_35.rep



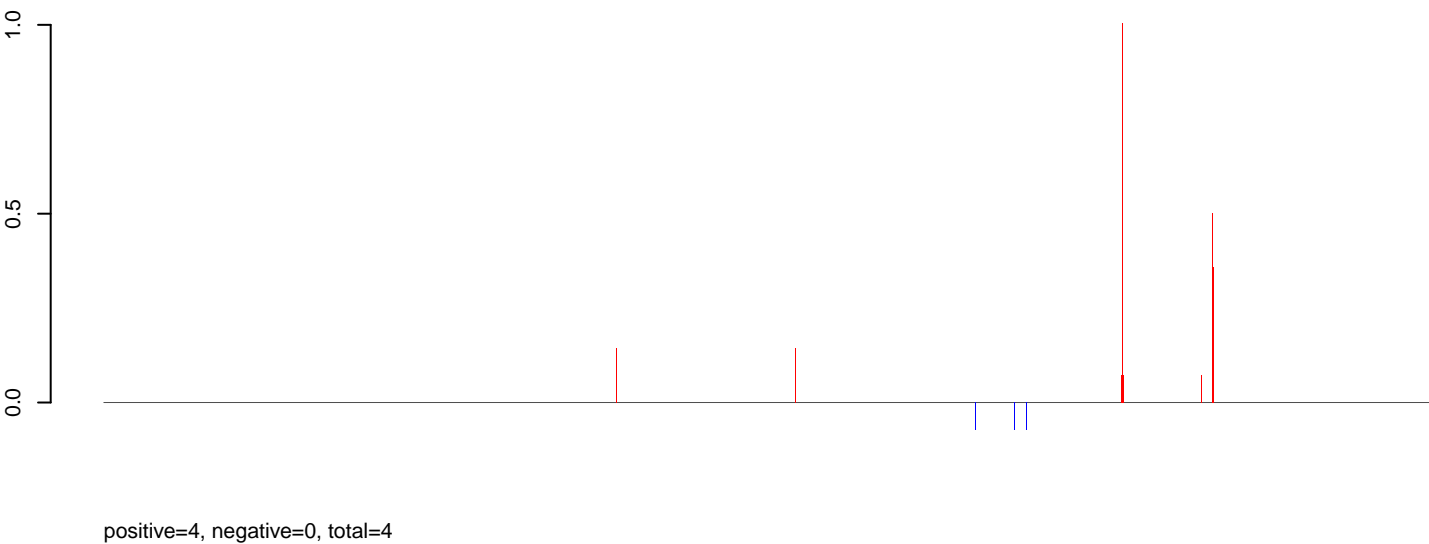
AeAeg_Aag2.TC.M3.rep



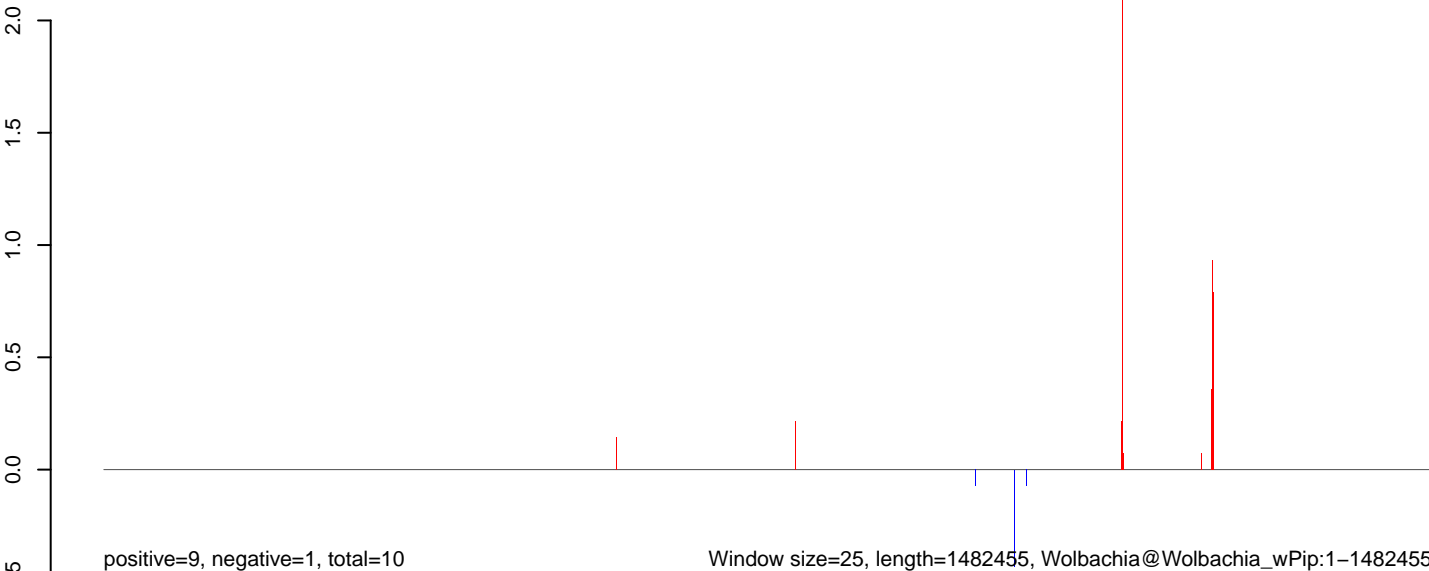
AeAeg_Aag2.TC.M3.18_23.rep



AeAeg_Aag2.TC.M3.24_35.rep



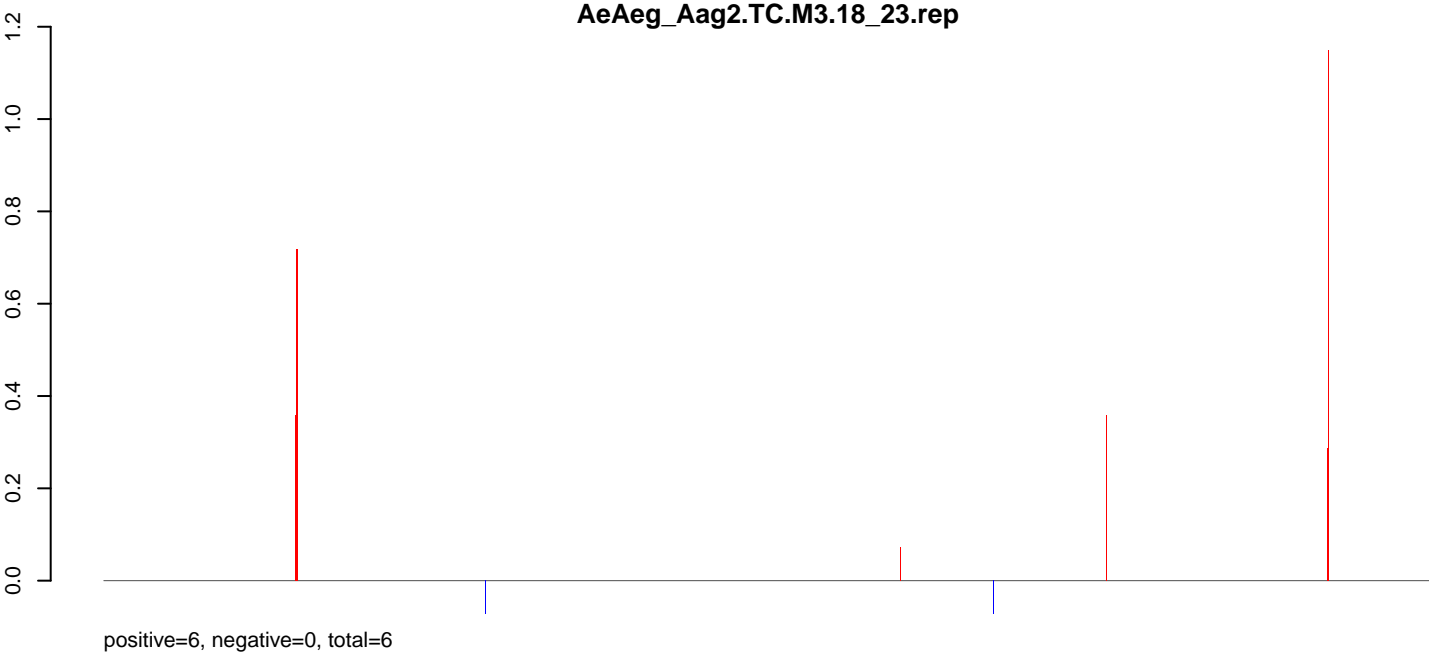
AeAeg_Aag2.TC.M3.rep



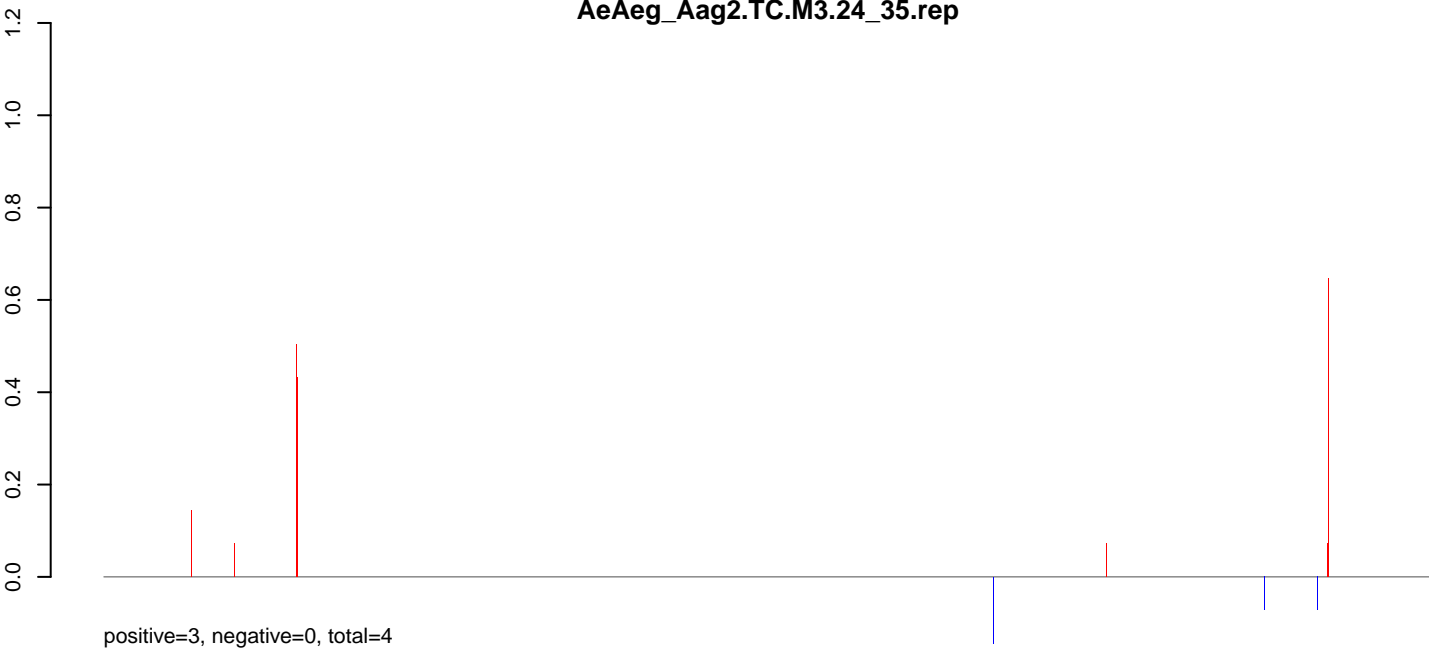
Window size=25, length=1482455, Wolbachia@Wolbachia_wPip:1-1482455

0 500000 1000000 1500000

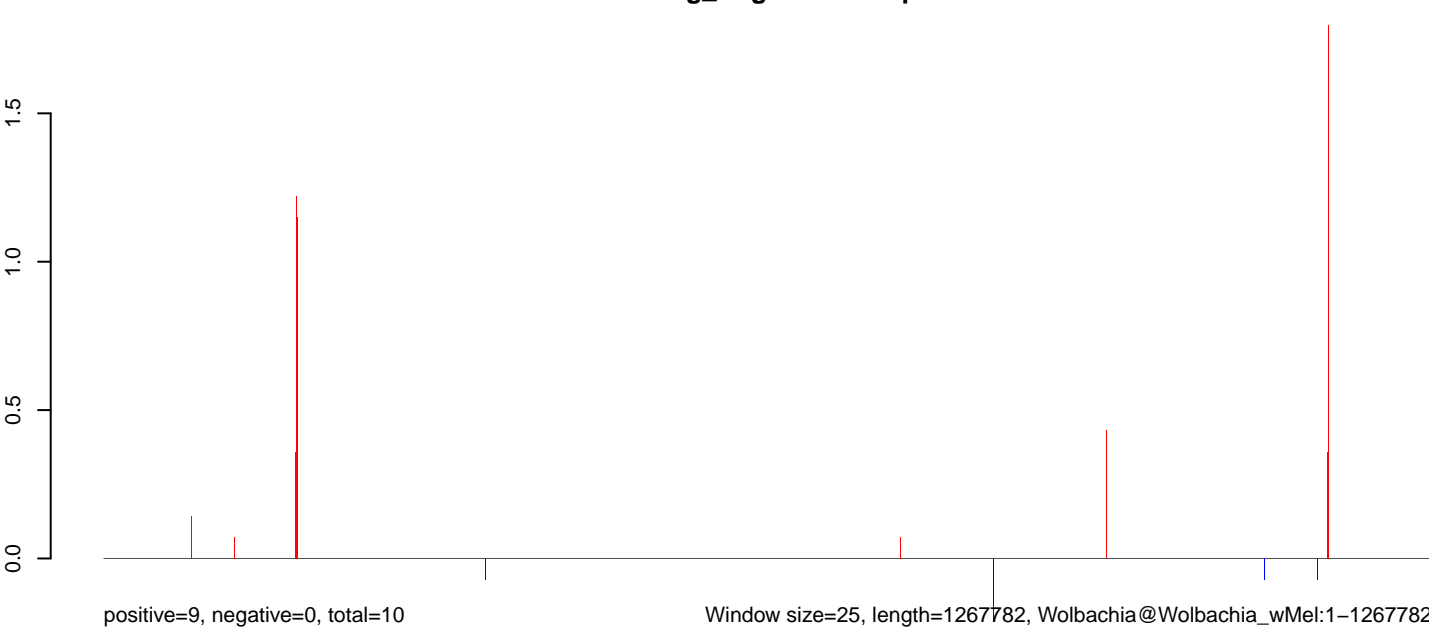
AeAeg_Aag2.TC.M3.18_23.rep



AeAeg_Aag2.TC.M3.24_35.rep



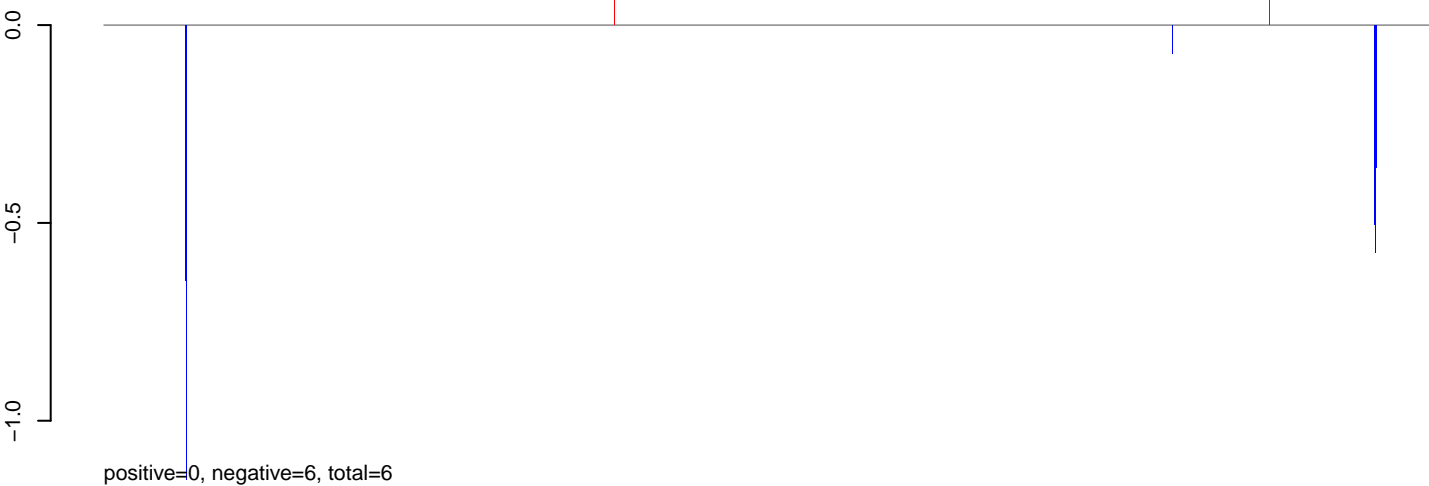
AeAeg_Aag2.TC.M3.rep



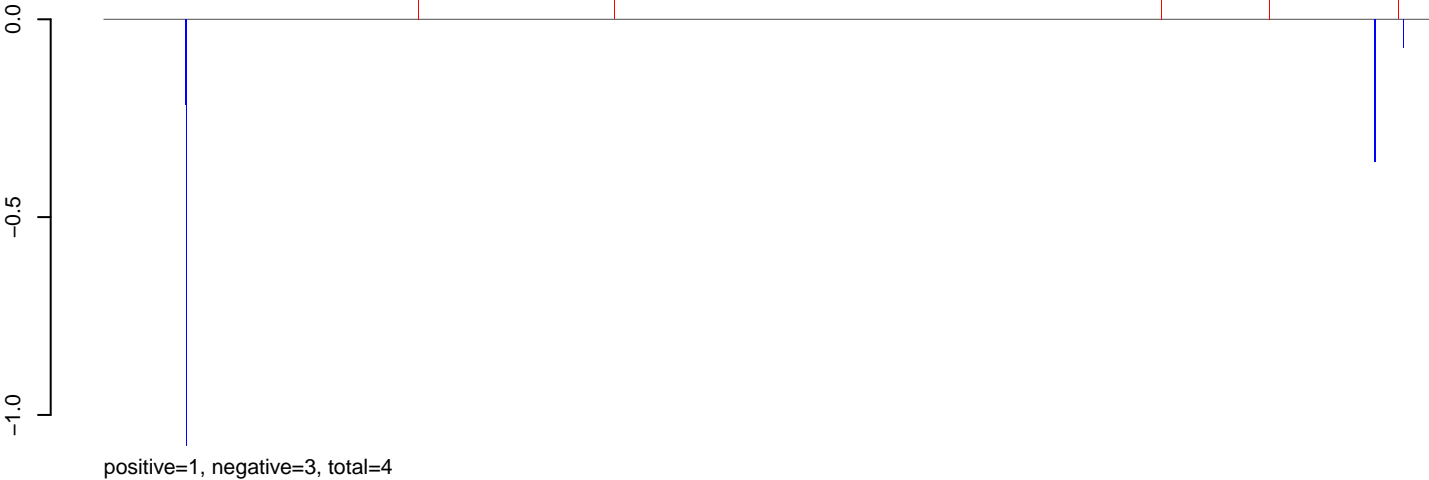
Window size=25, length=1267782, Wolbachia@Wolbachia_wMel:1-1267782

0 200000 400000 600000 800000 1000000 1200000

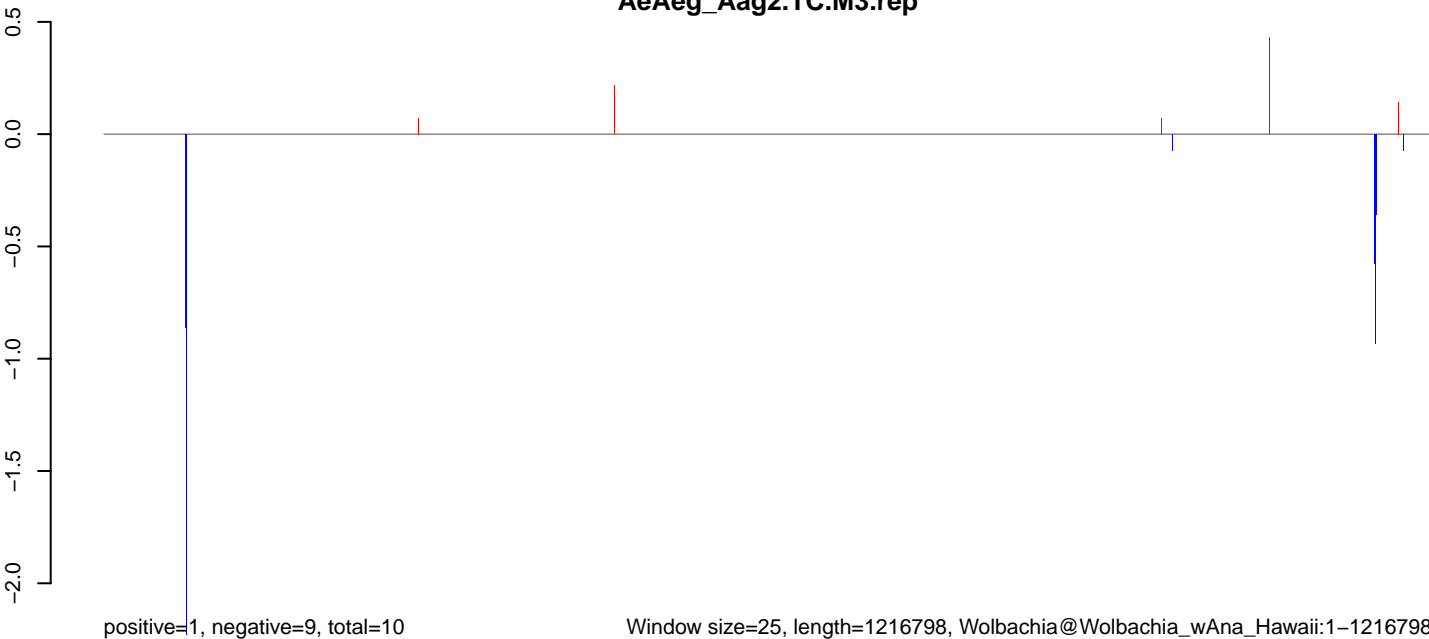
AeAeg_Aag2.TC.M3.18_23.rep



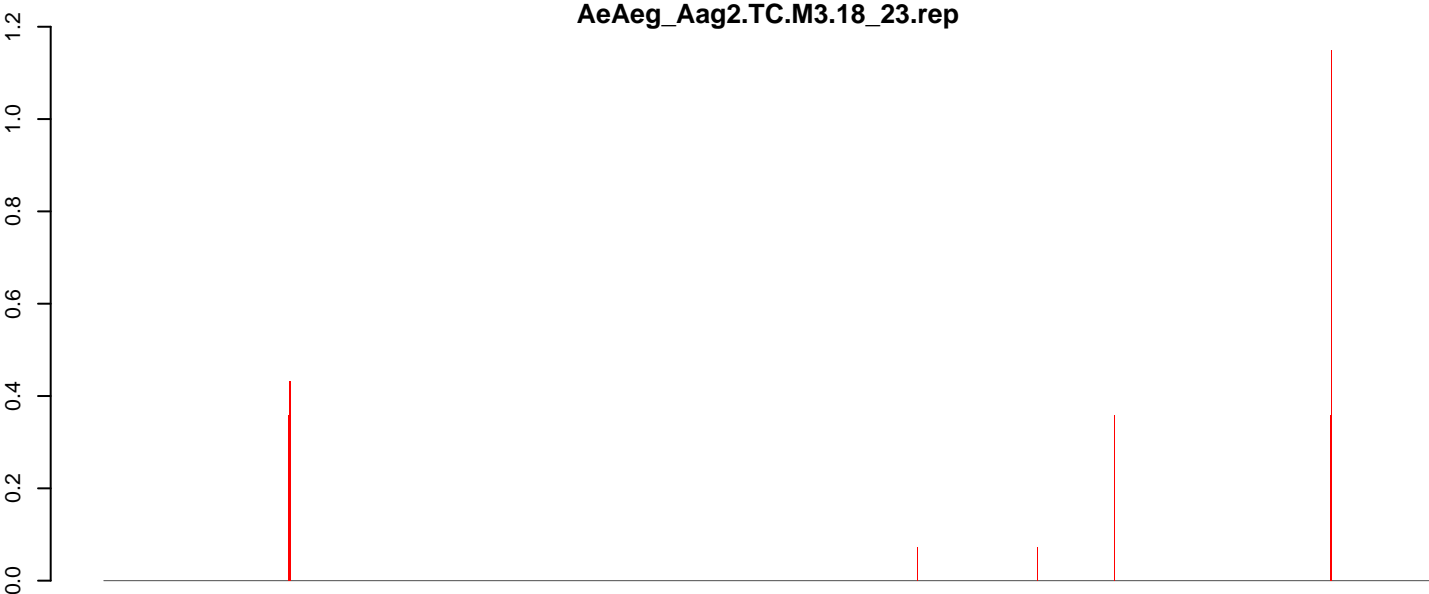
AeAeg_Aag2.TC.M3.24_35.rep



AeAeg_Aag2.TC.M3.rep

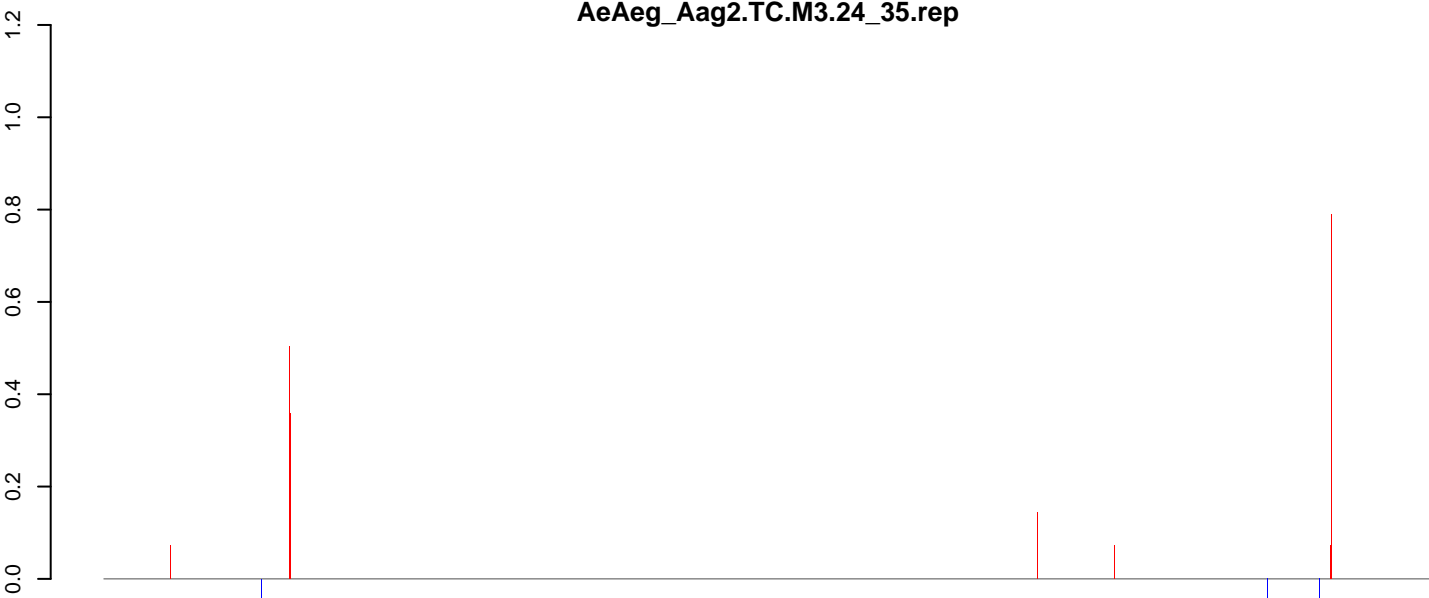


AeAeg_Aag2.TC.M3.18_23.rep



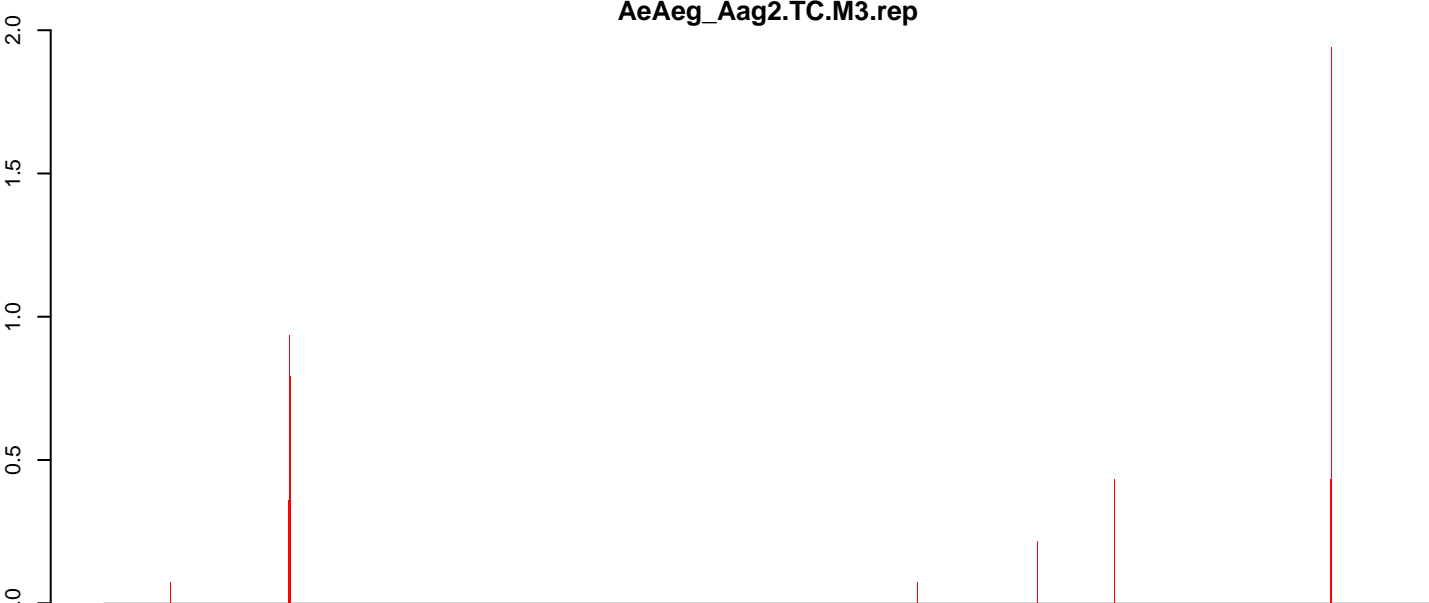
positive=6, negative=0, total=6

AeAeg_Aag2.TC.M3.24_35.rep



positive=3, negative=0, total=4

AeAeg_Aag2.TC.M3.rep

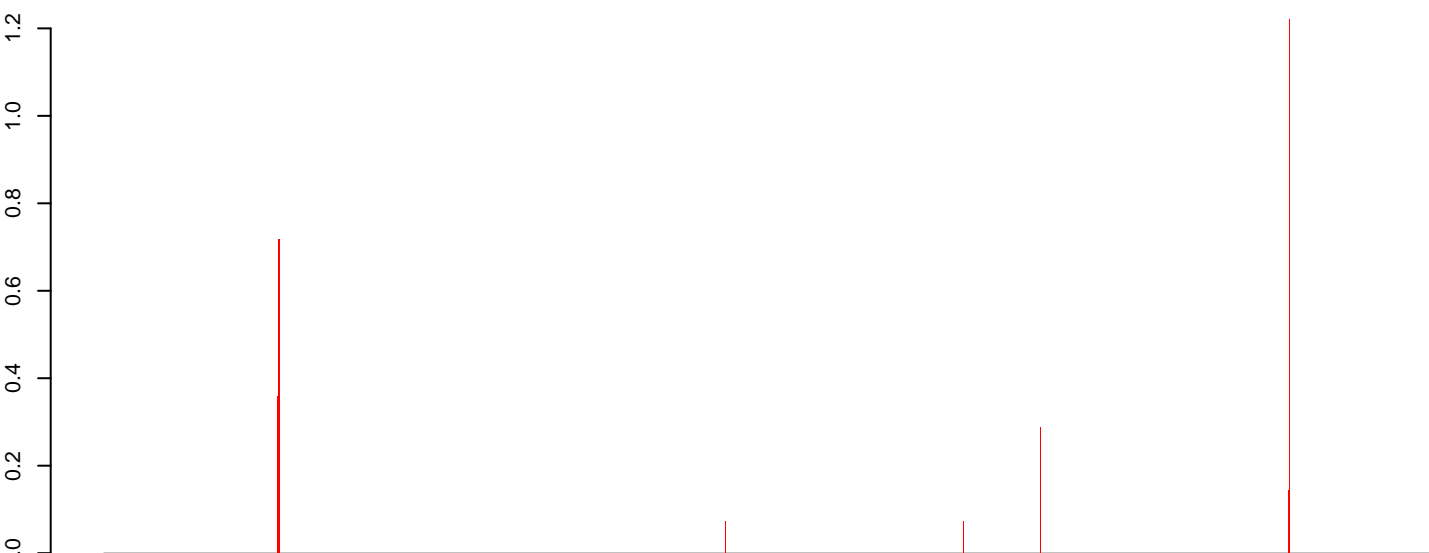


positive=9, negative=0, total=9

Window size=25, length=1295804, Wolbachia@Wolbachia_wSim_wHa:1-1295804

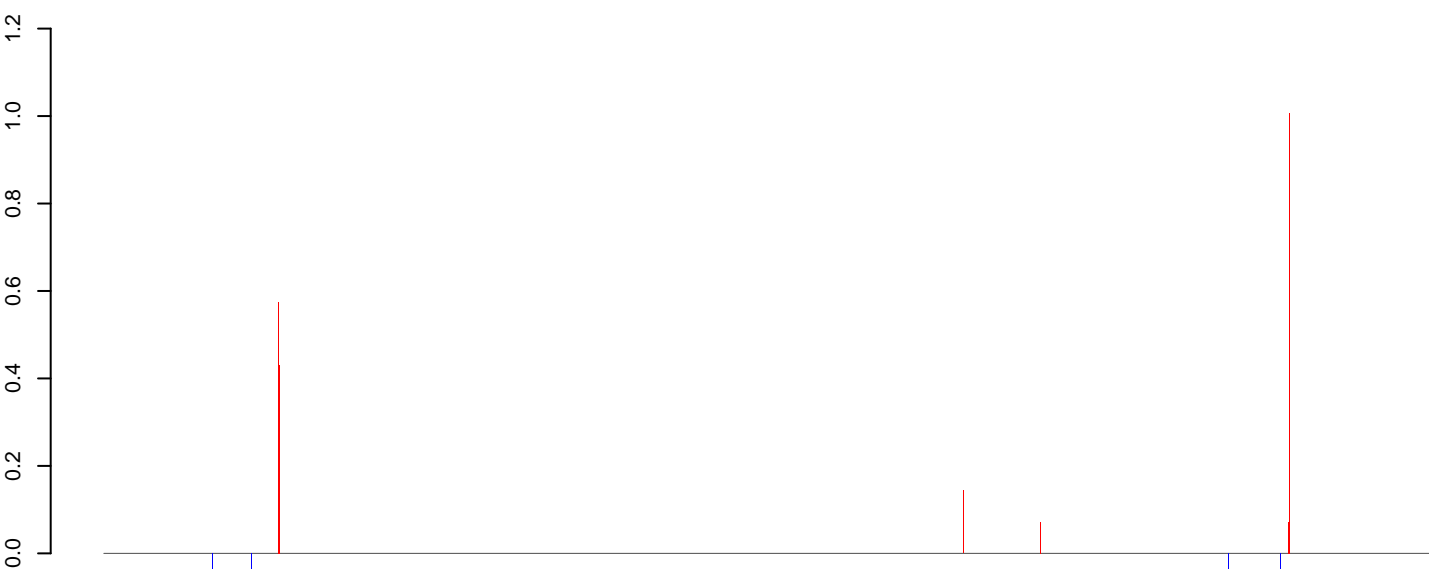
0 200000 400000 600000 800000 1000000 1200000

AeAeg_Aag2.TC.M3.18_23.rep



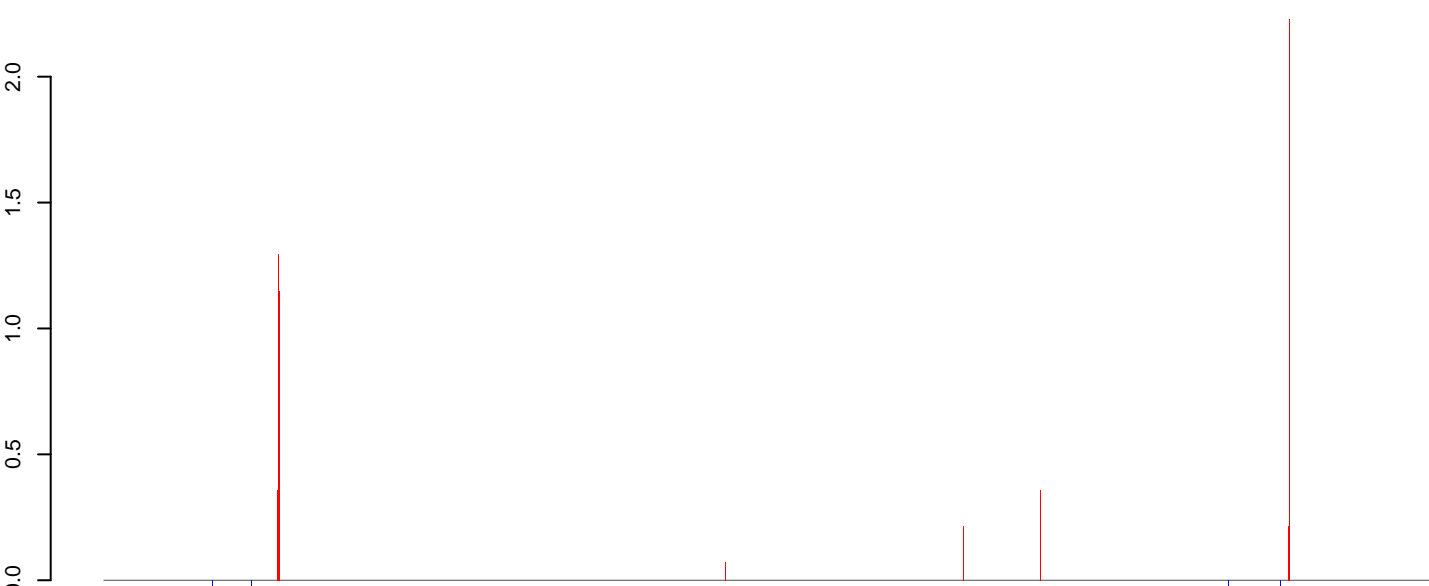
positive=6, negative=0, total=6

AeAeg_Aag2.TC.M3.24_35.rep



positive=3, negative=0, total=4

AeAeg_Aag2.TC.M3.rep

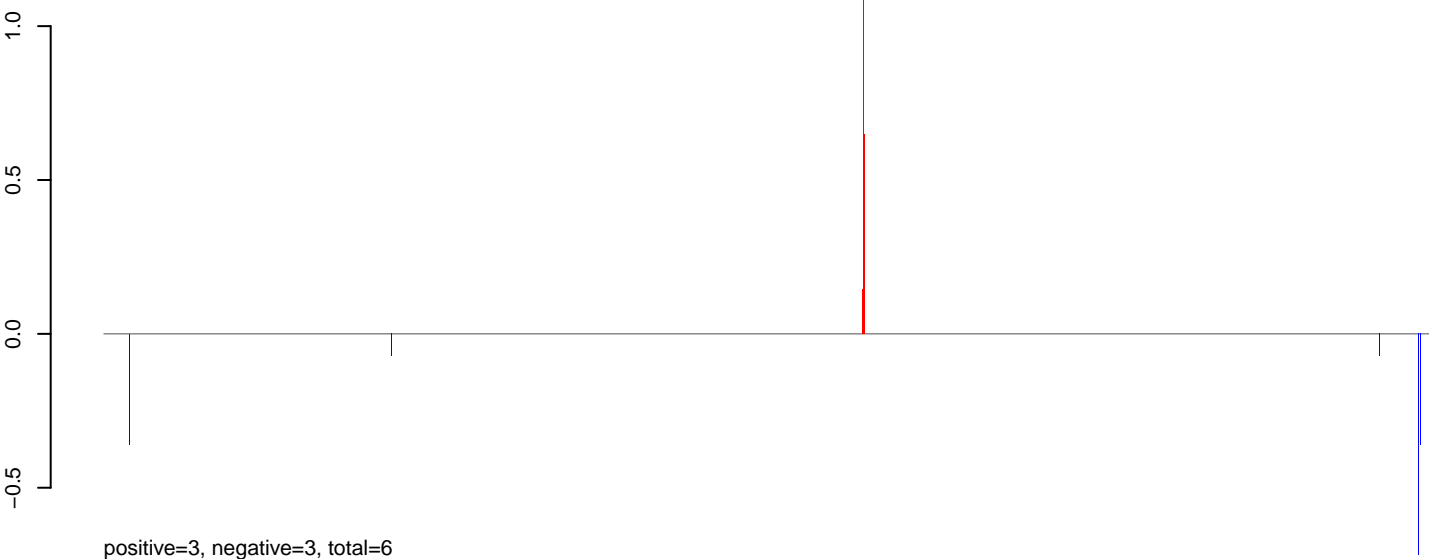


positive=9, negative=0, total=10

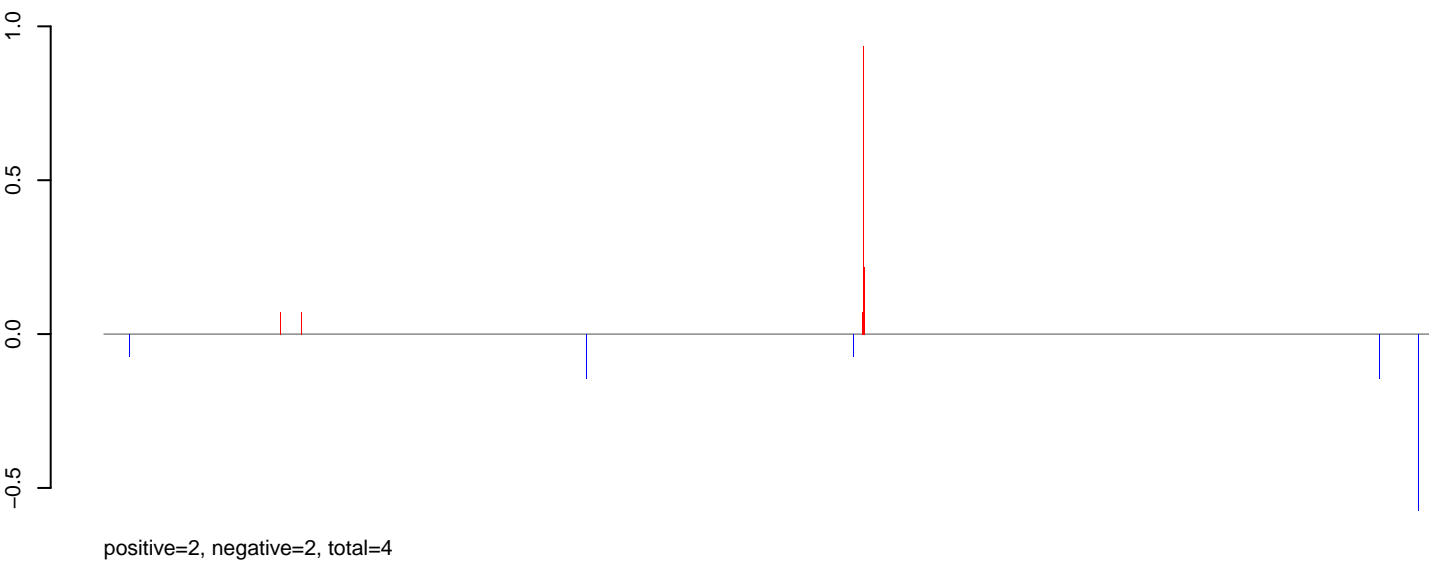
Window size=25, length=1445873, Wolbachia@Wolbachia_wRi:1-1445873

0 500000 1000000 1500000

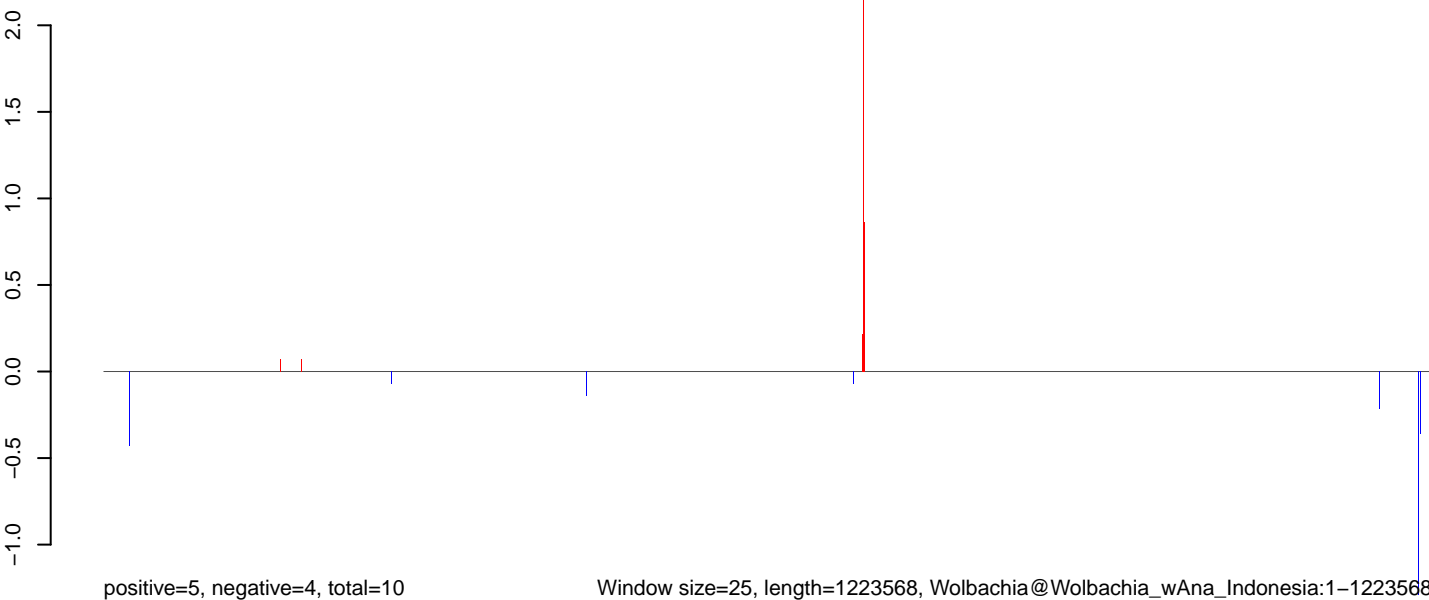
AeAeg_Aag2.TC.M3.18_23.rep



AeAeg_Aag2.TC.M3.24_35.rep



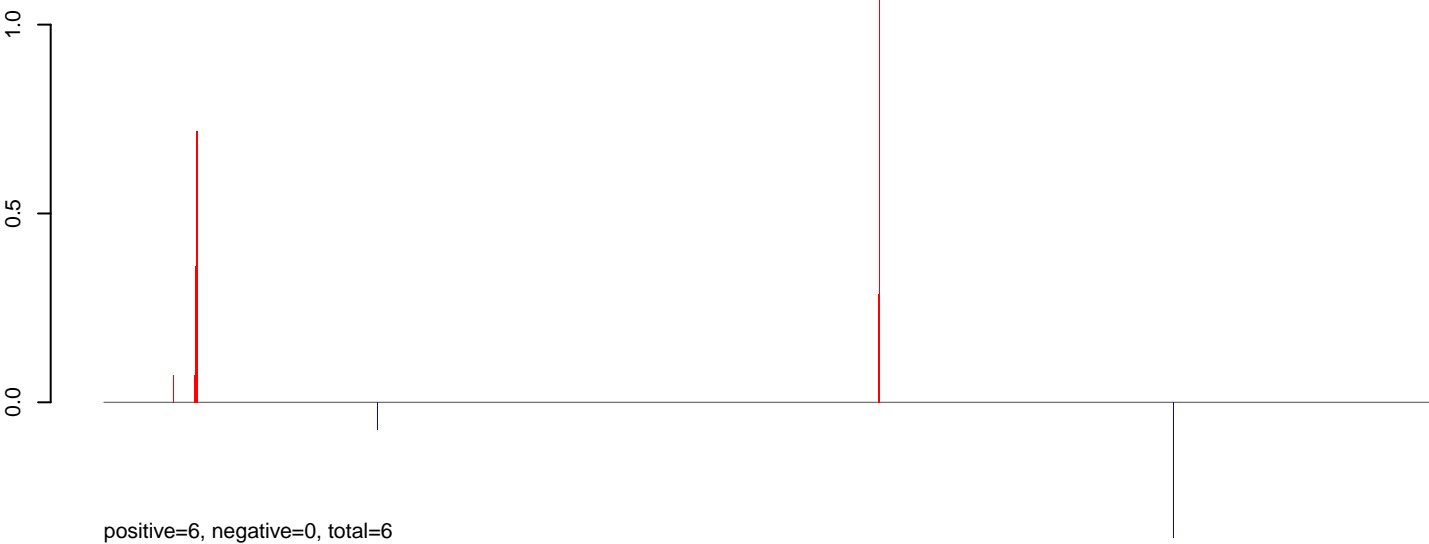
AeAeg_Aag2.TC.M3.rep



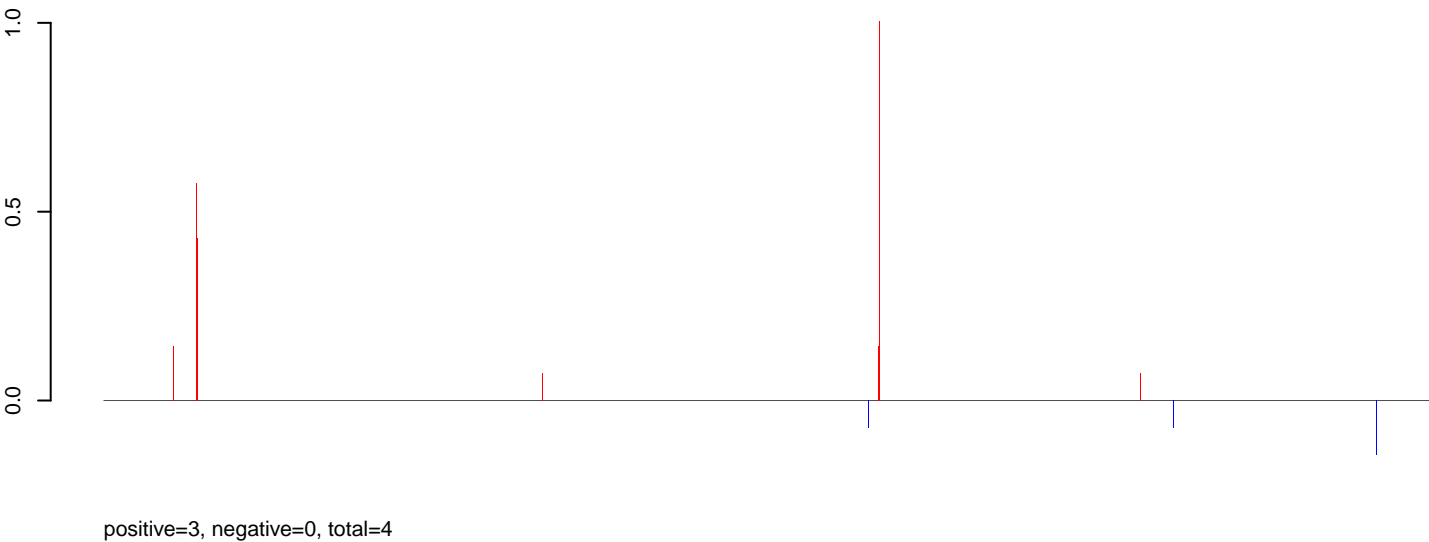
Window size=25, length=1223568, Wolbachia@Wolbachia_wAna_Indonesia:1-1223568

0 200000 400000 600000 800000 1000000 1200000

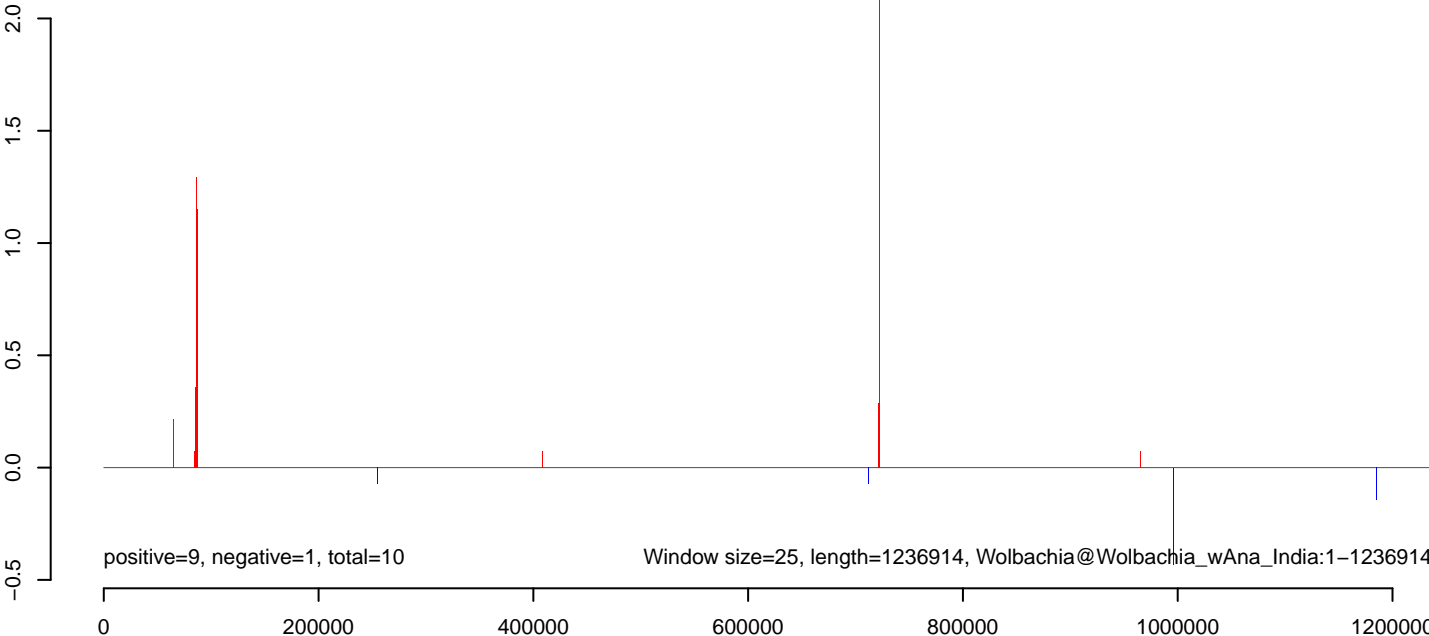
AeAeg_Aag2.TC.M3.18_23.rep



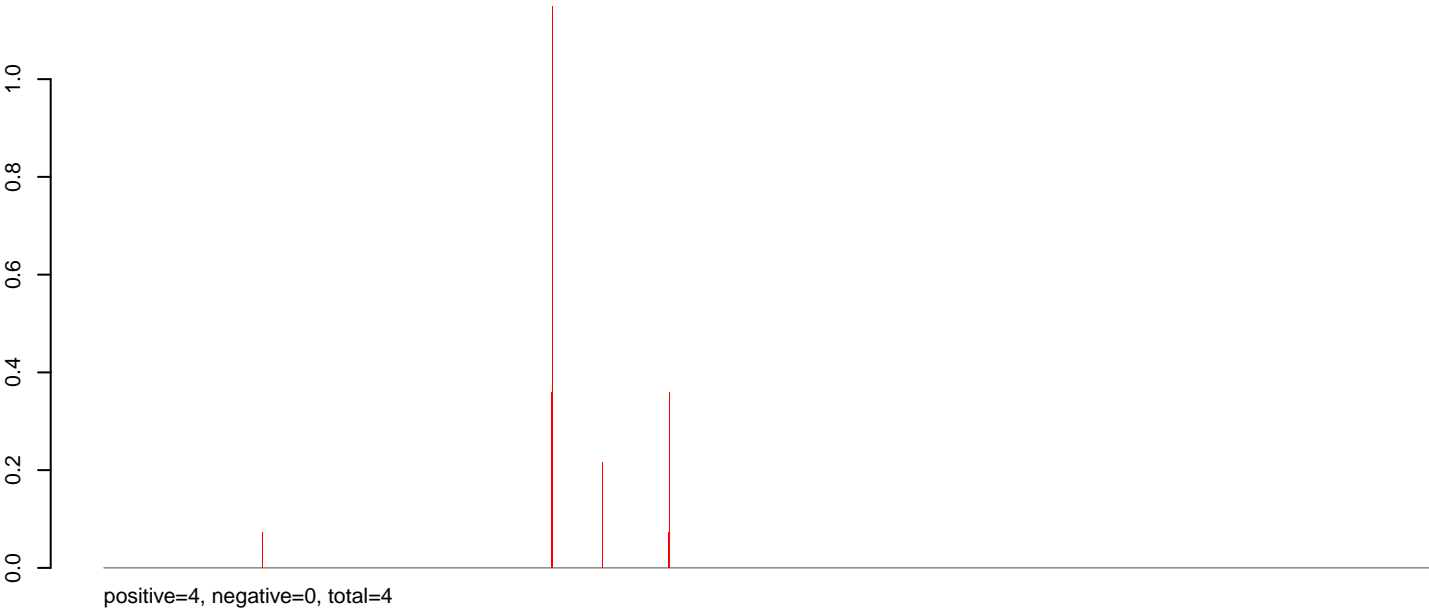
AeAeg_Aag2.TC.M3.24_35.rep



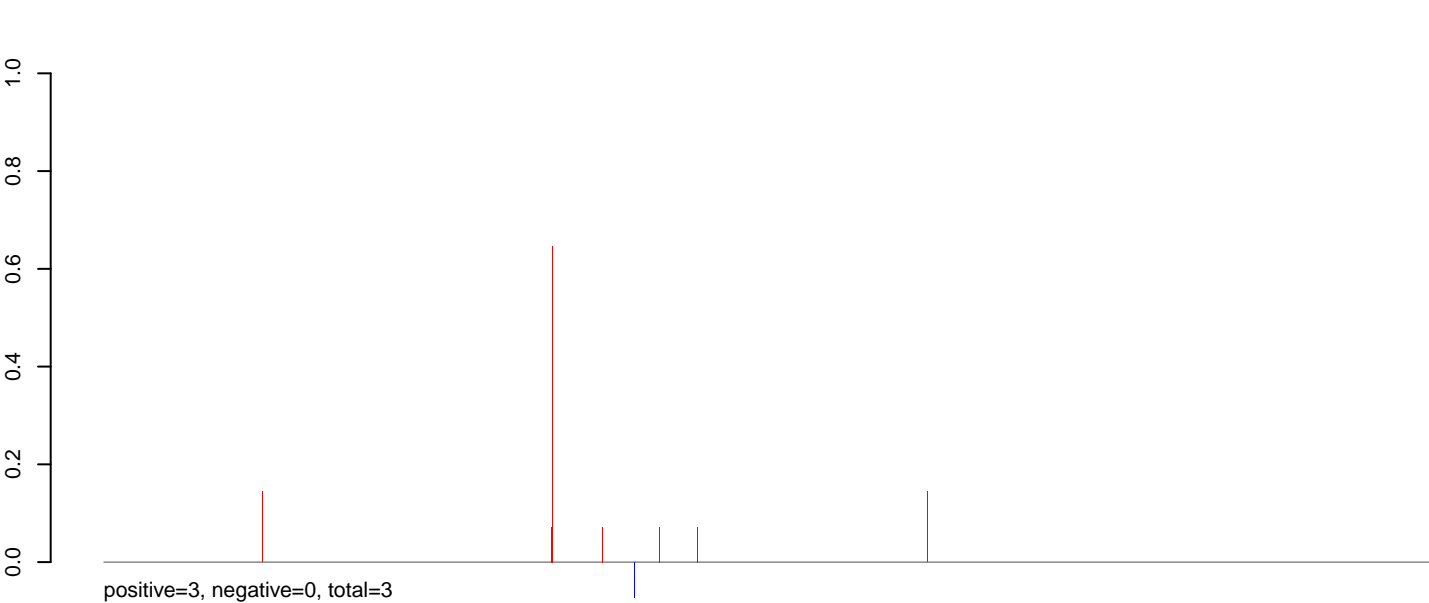
AeAeg_Aag2.TC.M3.rep



AeAeg_Aag2.TC.M3.18_23.rep



AeAeg_Aag2.TC.M3.24_35.rep



AeAeg_Aag2.TC.M3.rep

