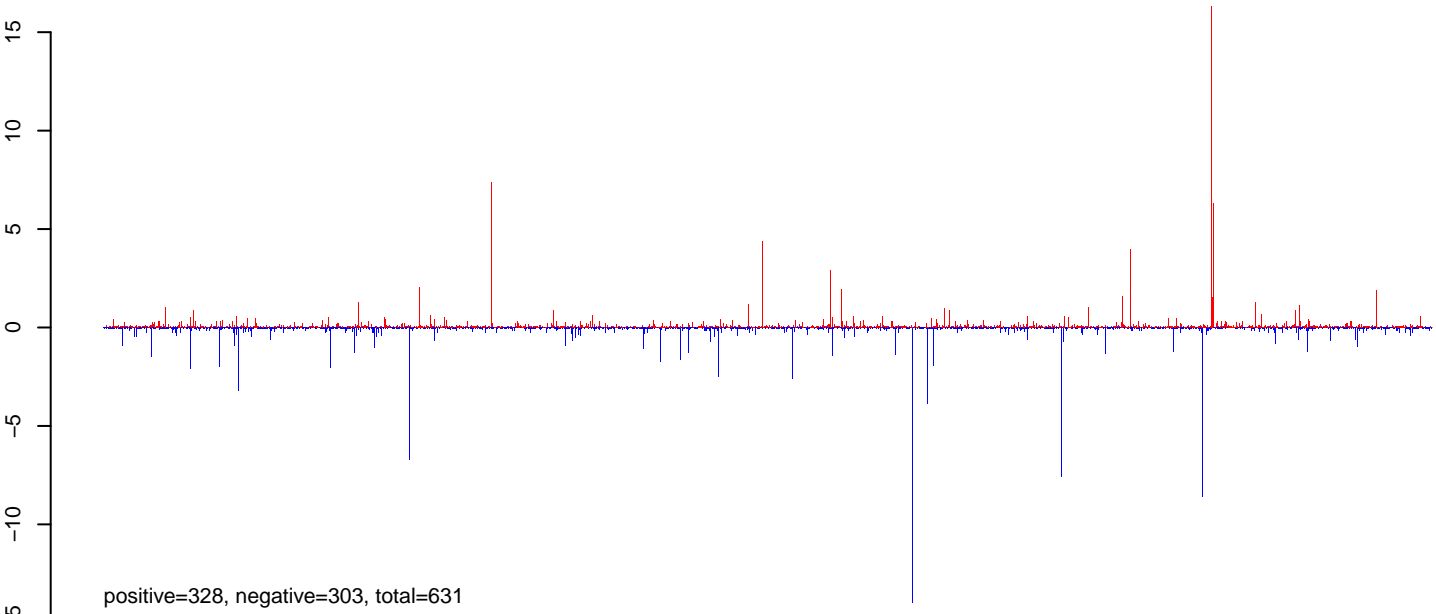
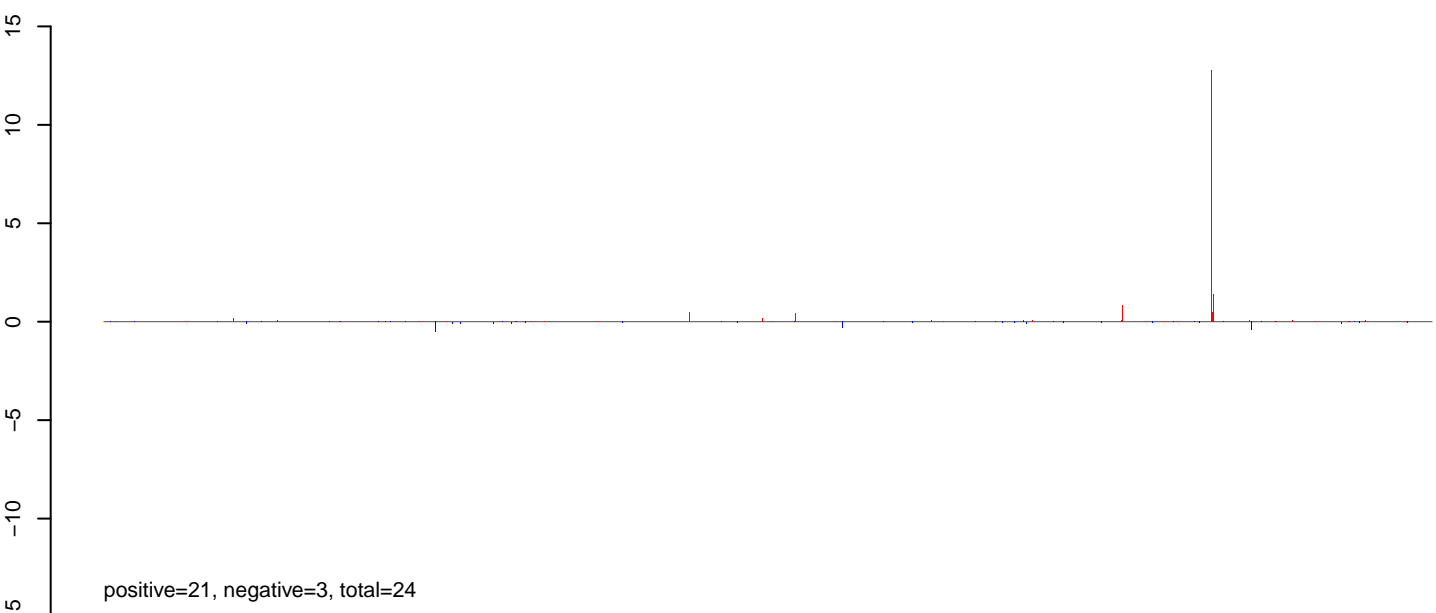


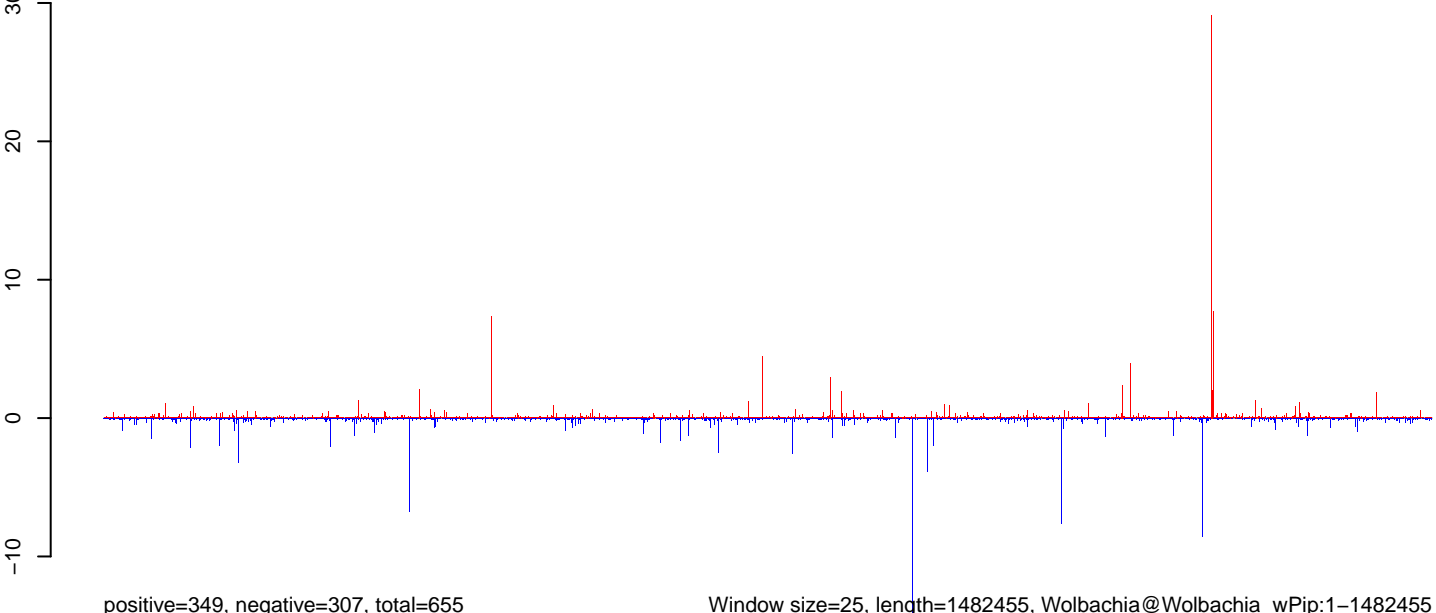
**AeAeg\_Ovary\_NonBF\_cat.18\_23.rep**



**AeAeg\_Ovary\_NonBF\_cat.24\_35.rep**



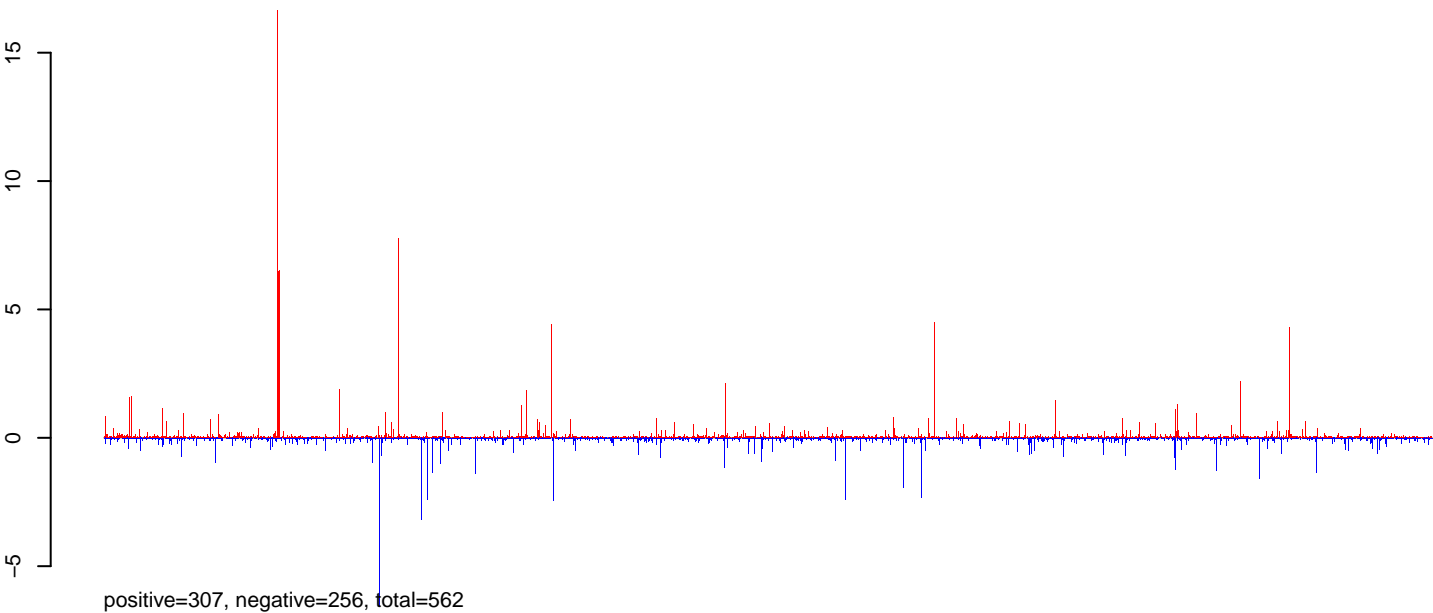
**AeAeg\_Ovary\_NonBF\_cat.rep**



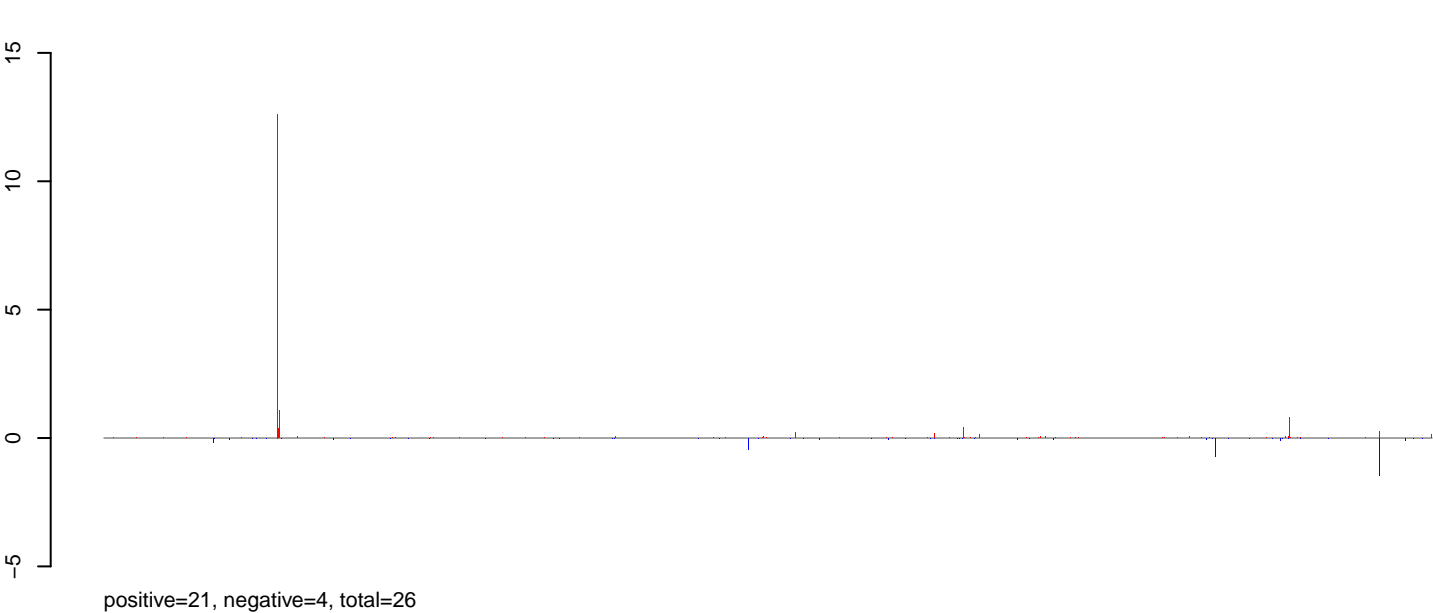
Window size=25, length=1482455, Wolbachia@Wolbachia\_wPip:1-1482455

0 500000 1000000 1500000

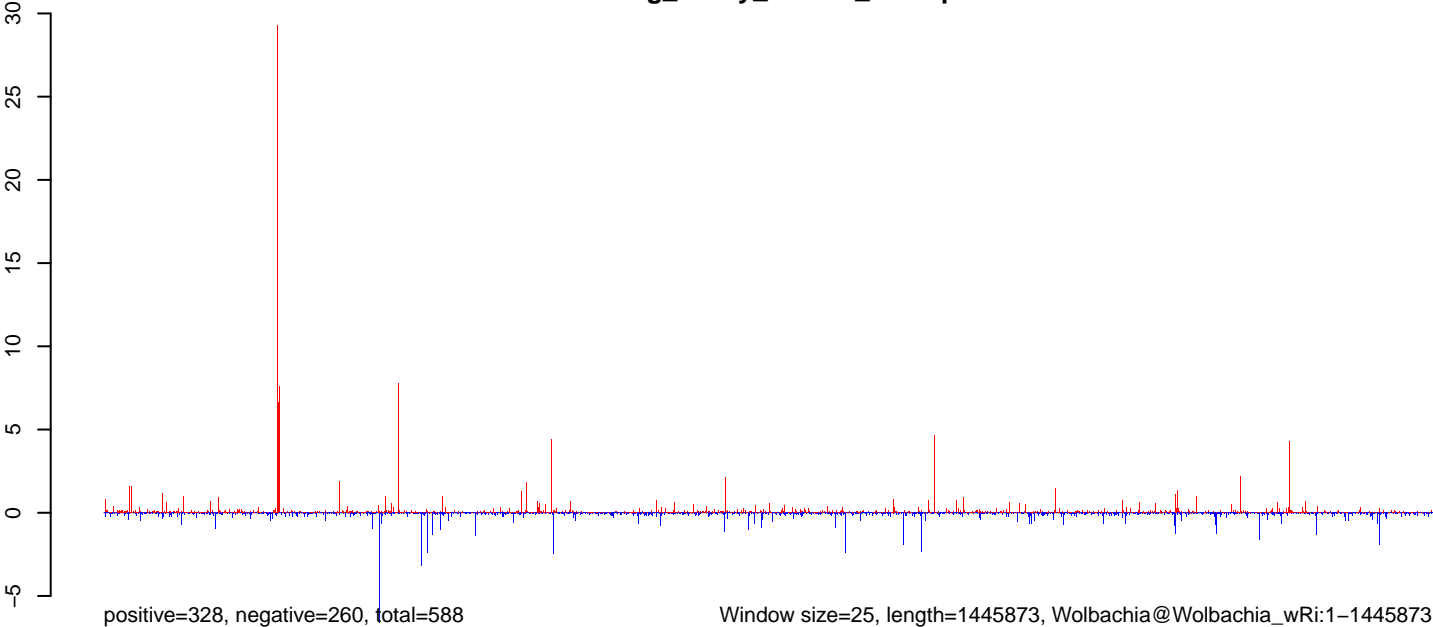
**AeAeg\_Ovary\_NonBF\_cat.18\_23.rep**



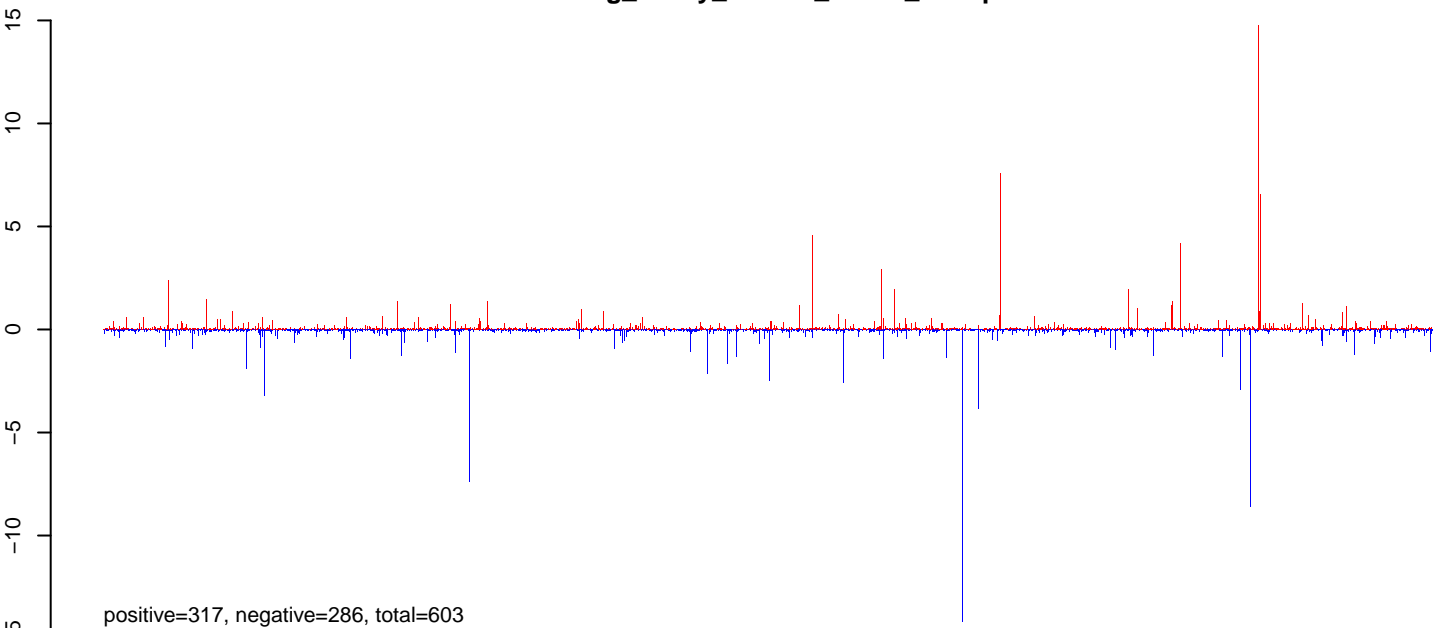
**AeAeg\_Ovary\_NonBF\_cat.24\_35.rep**



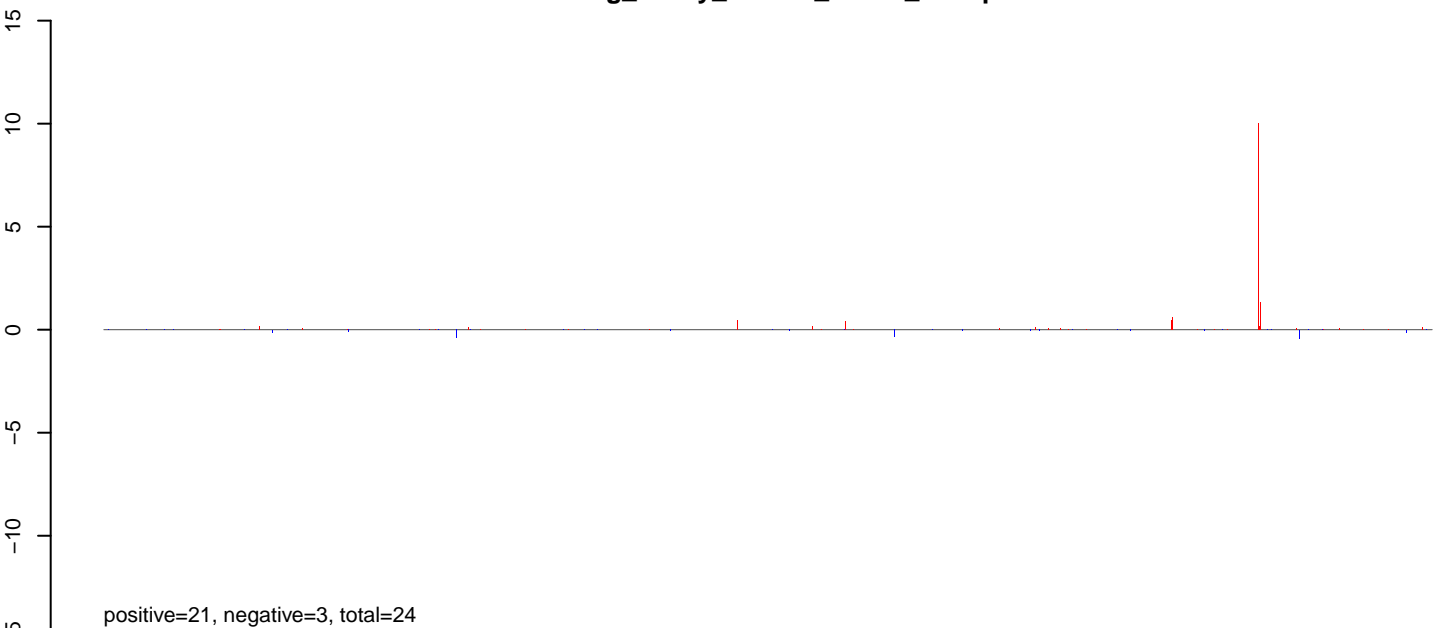
**AeAeg\_Ovary\_NonBF\_cat.rep**



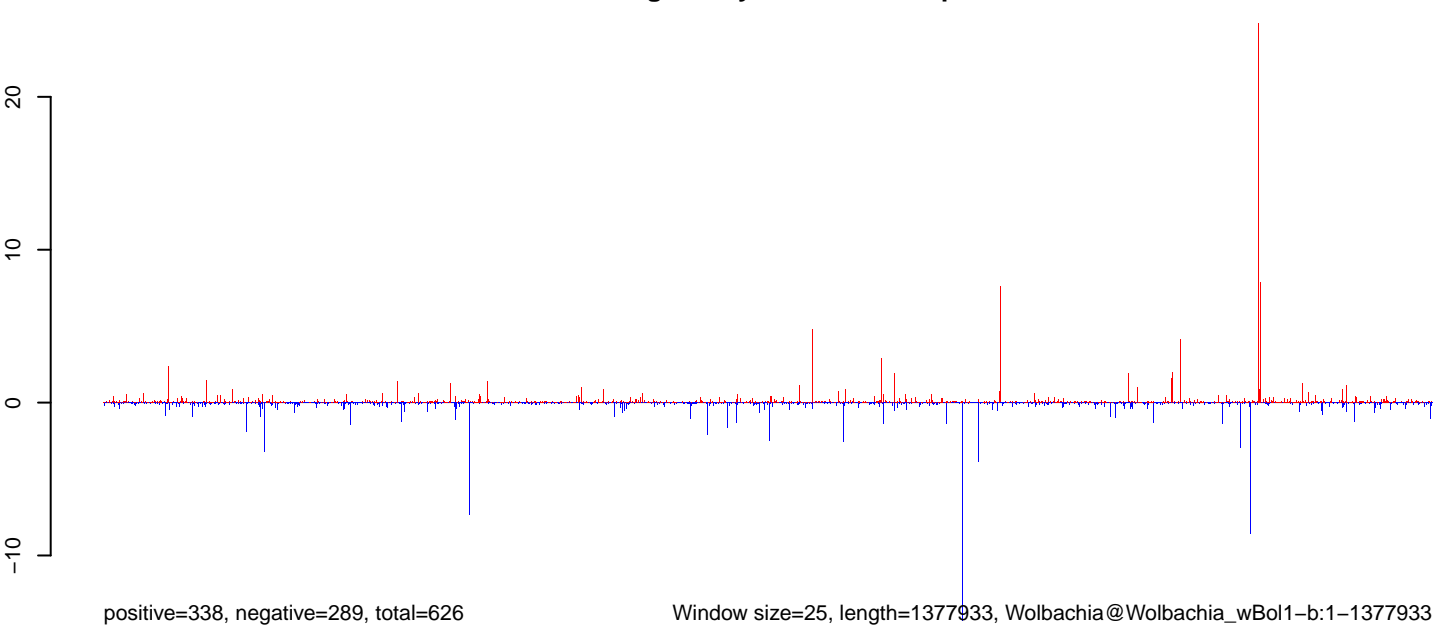
**AeAeg\_Ovary\_NonBF\_cat.18\_23.rep**



**AeAeg\_Ovary\_NonBF\_cat.24\_35.rep**

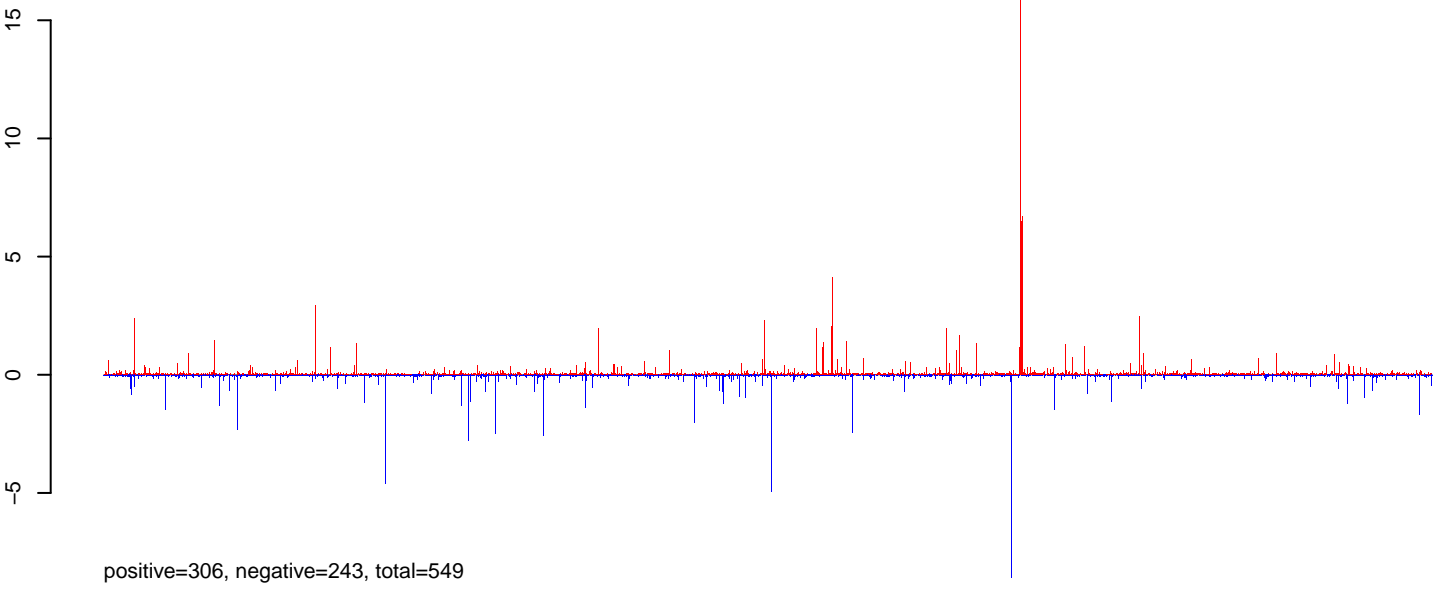


**AeAeg\_Ovary\_NonBF\_cat.rep**

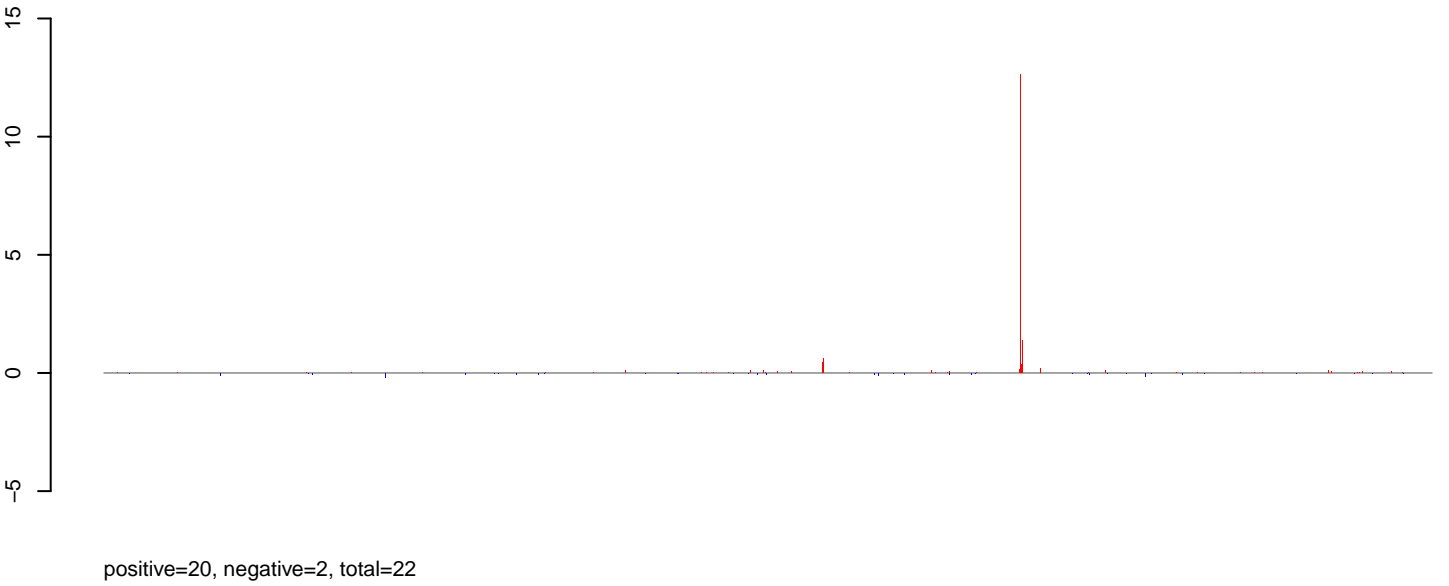


0 200000 400000 600000 800000 1000000 1200000 1400000

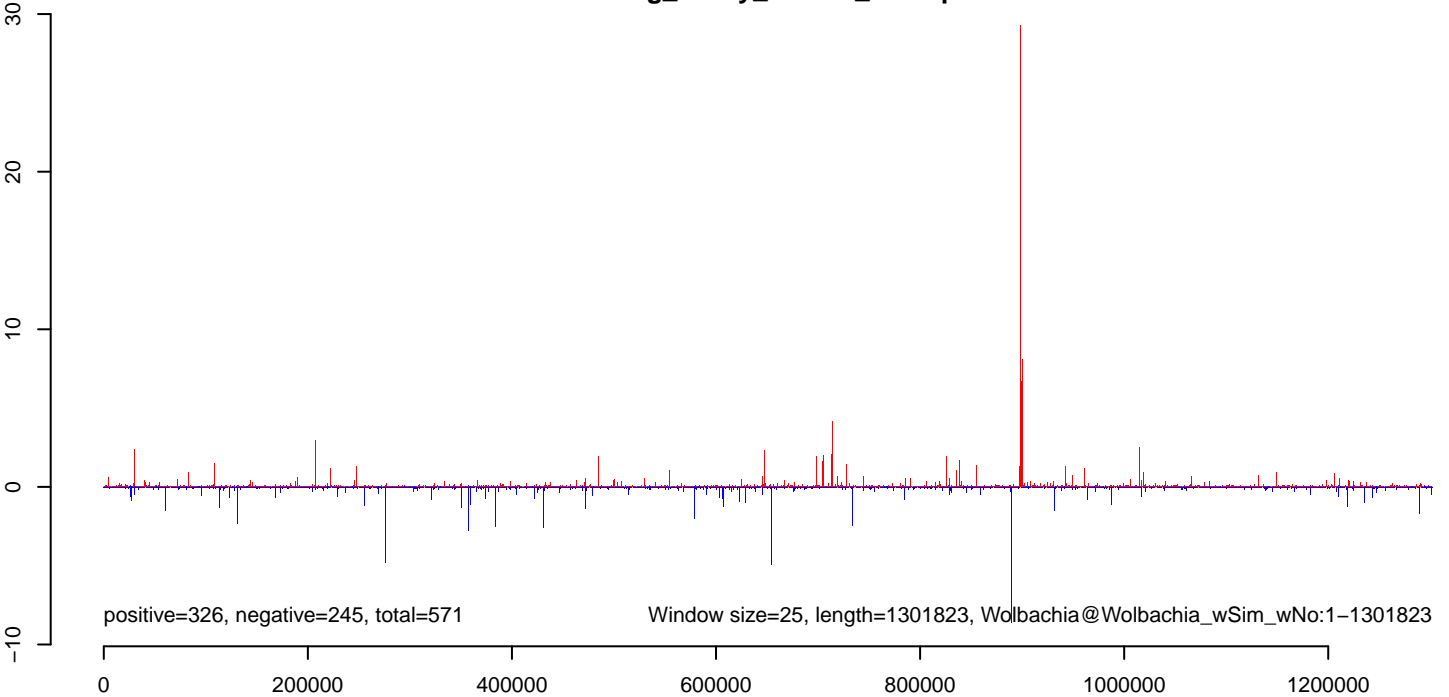
**AeAeg\_Ovary\_NonBF\_cat.18\_23.rep**



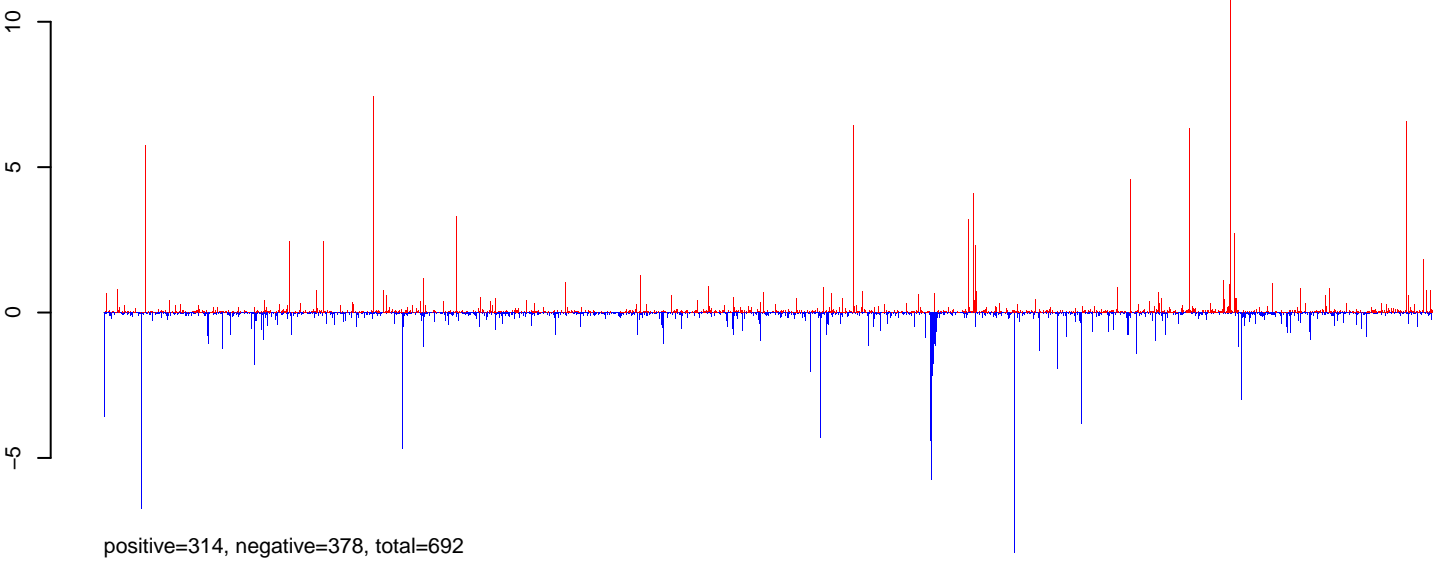
**AeAeg\_Ovary\_NonBF\_cat.24\_35.rep**



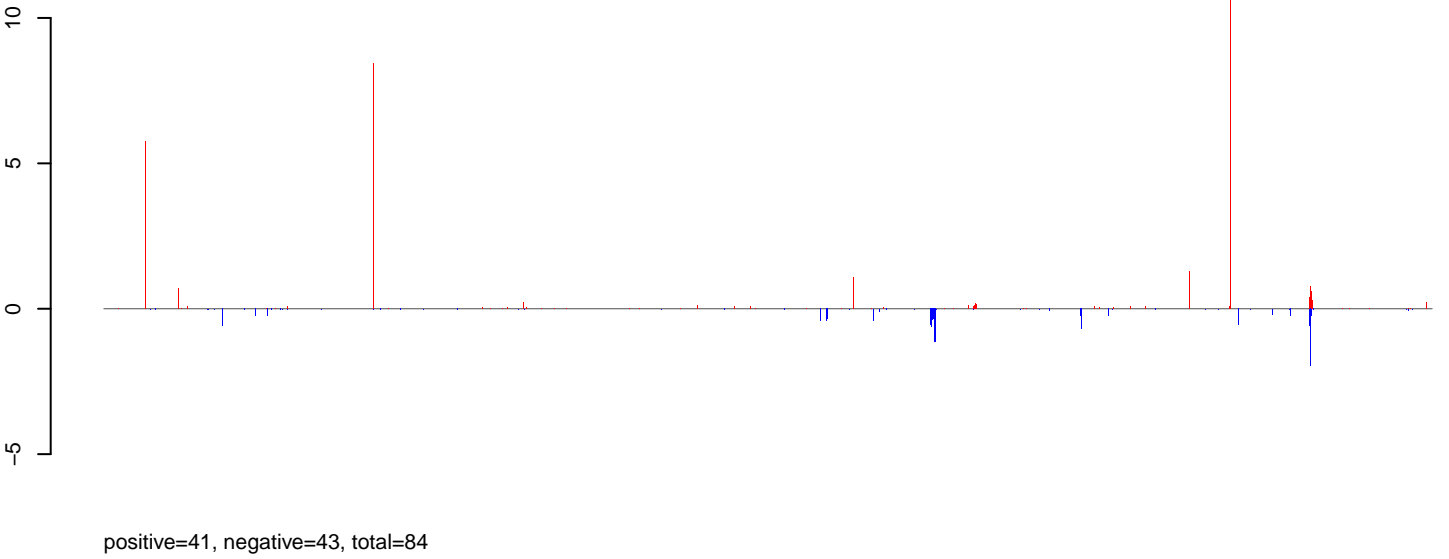
**AeAeg\_Ovary\_NonBF\_cat.rep**



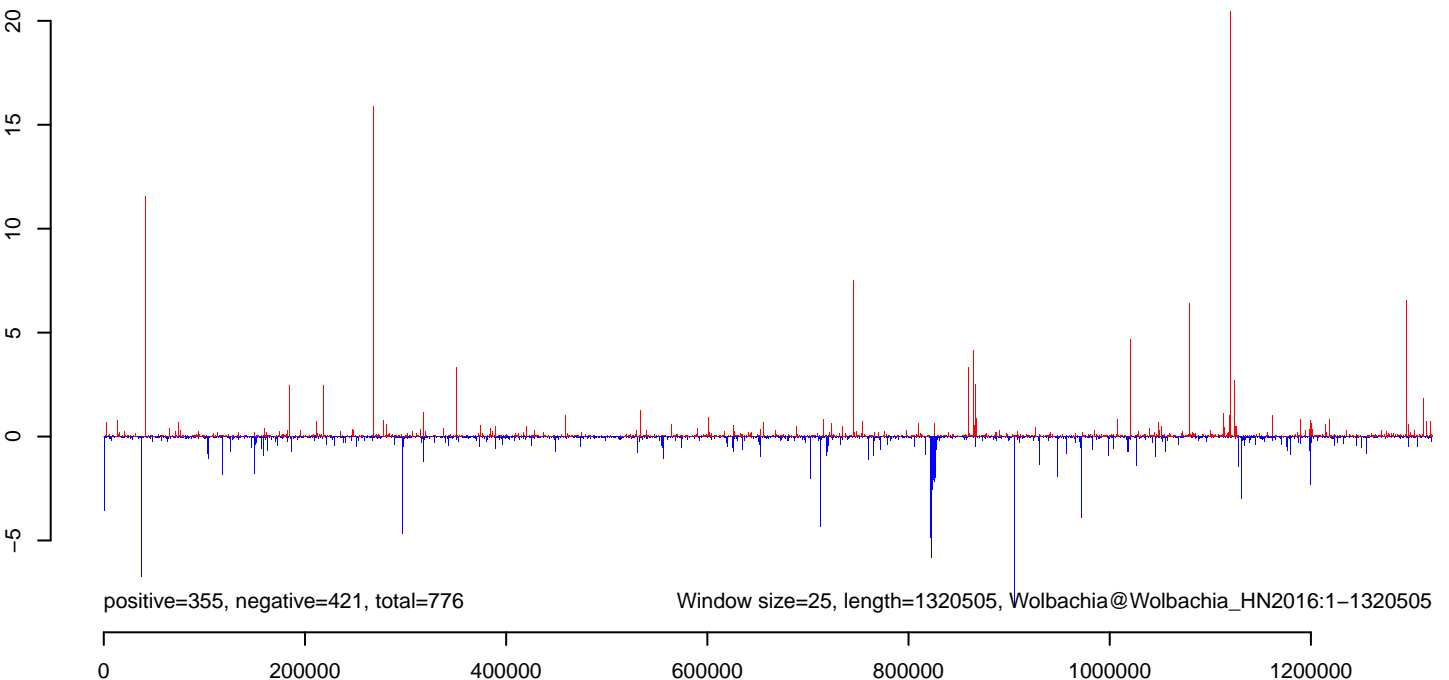
**AeAeg\_Ovary\_NonBF\_cat.18\_23.rep**



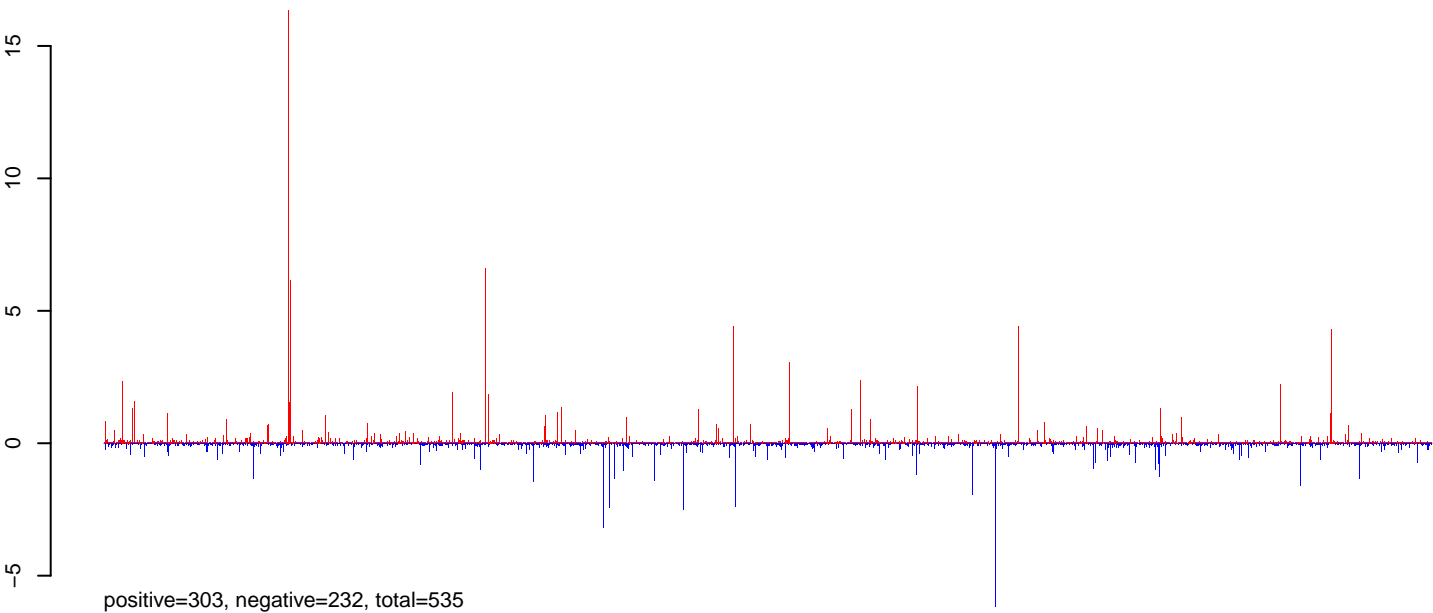
**AeAeg\_Ovary\_NonBF\_cat.24\_35.rep**



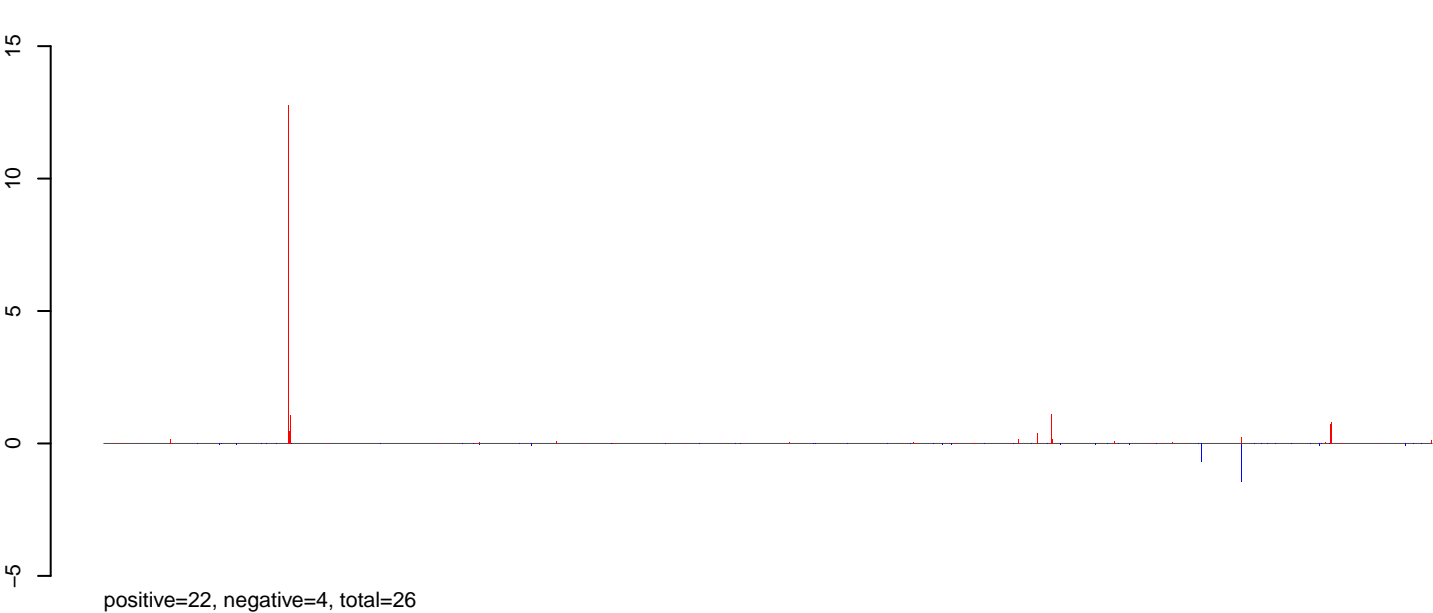
**AeAeg\_Ovary\_NonBF\_cat.rep**



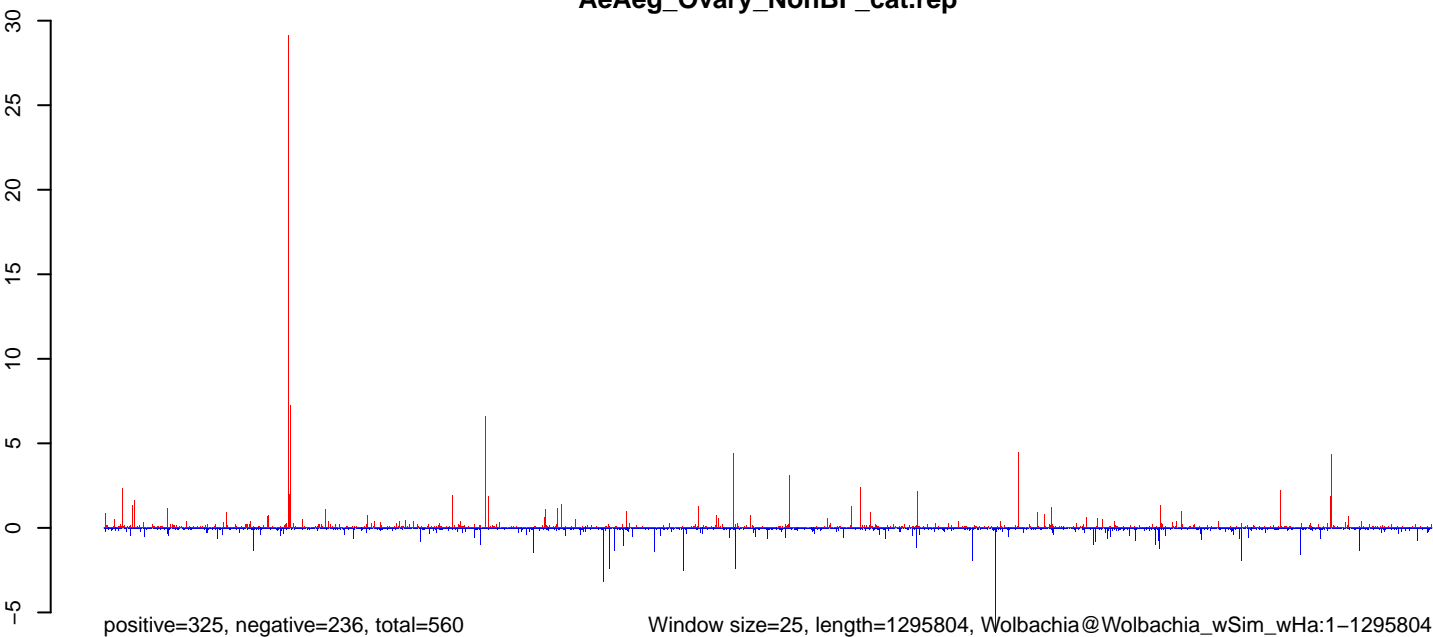
**AeAeg\_Ovary\_NonBF\_cat.18\_23.rep**



**AeAeg\_Ovary\_NonBF\_cat.24\_35.rep**

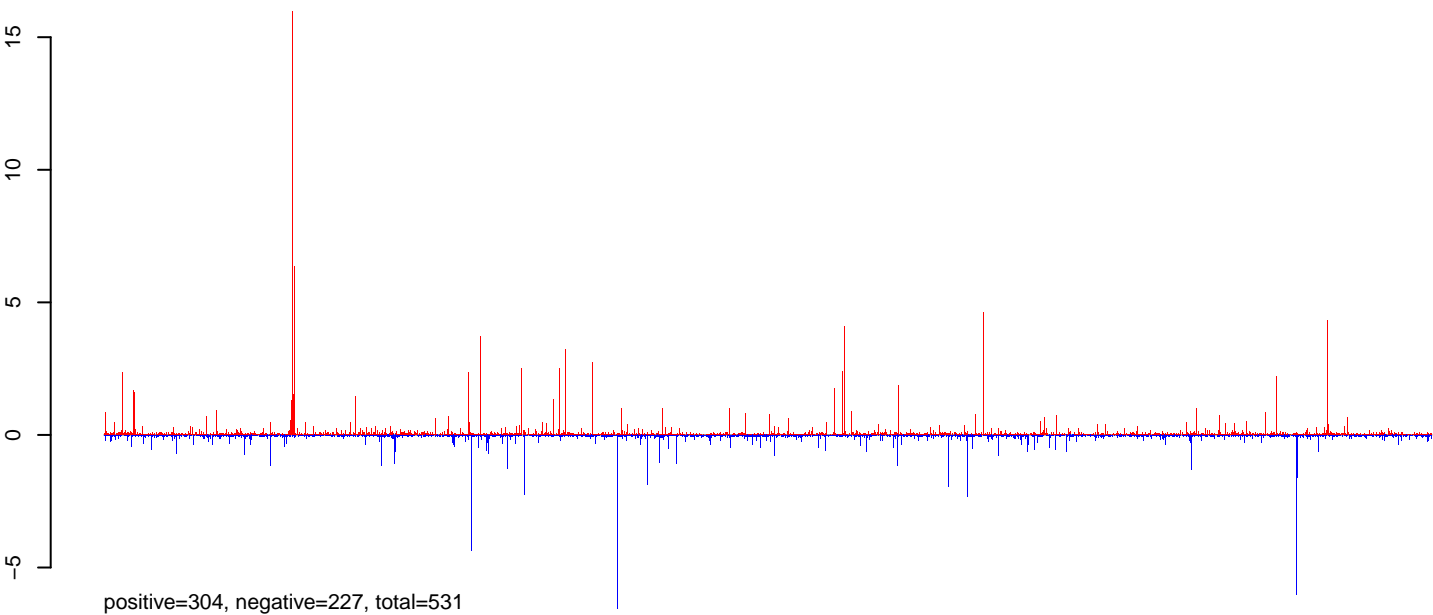


**AeAeg\_Ovary\_NonBF\_cat.rep**

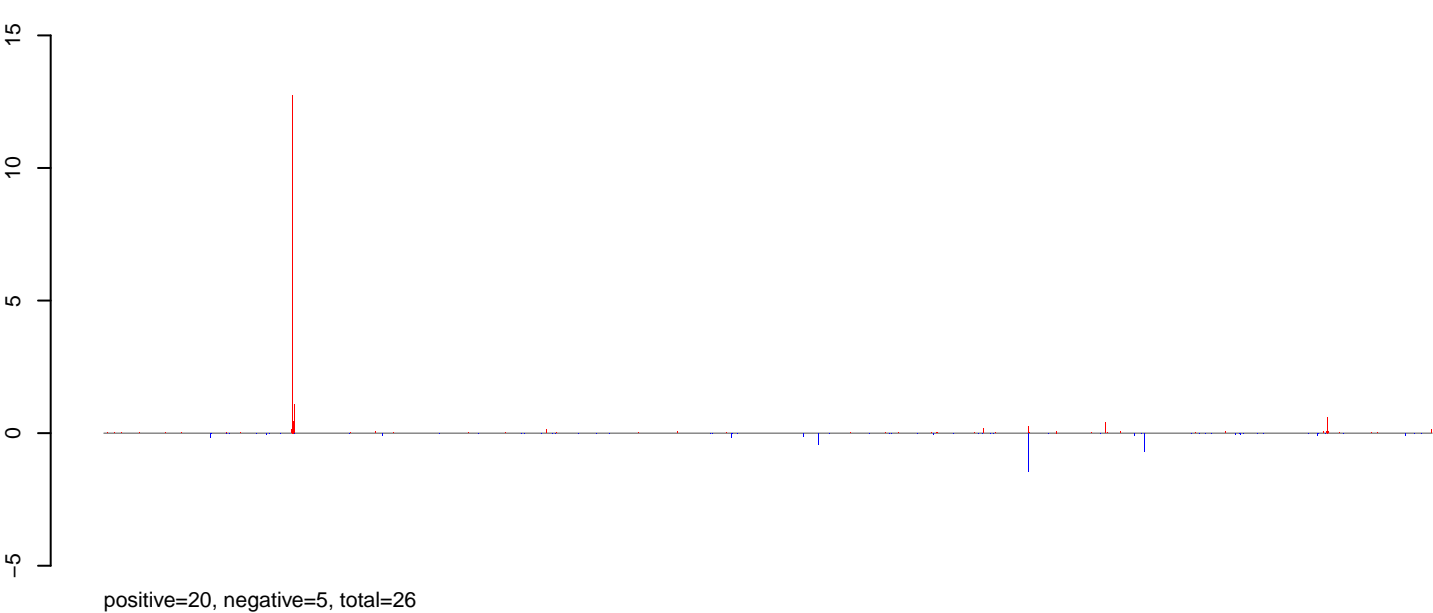


0 200000 400000 600000 800000 1000000 1200000

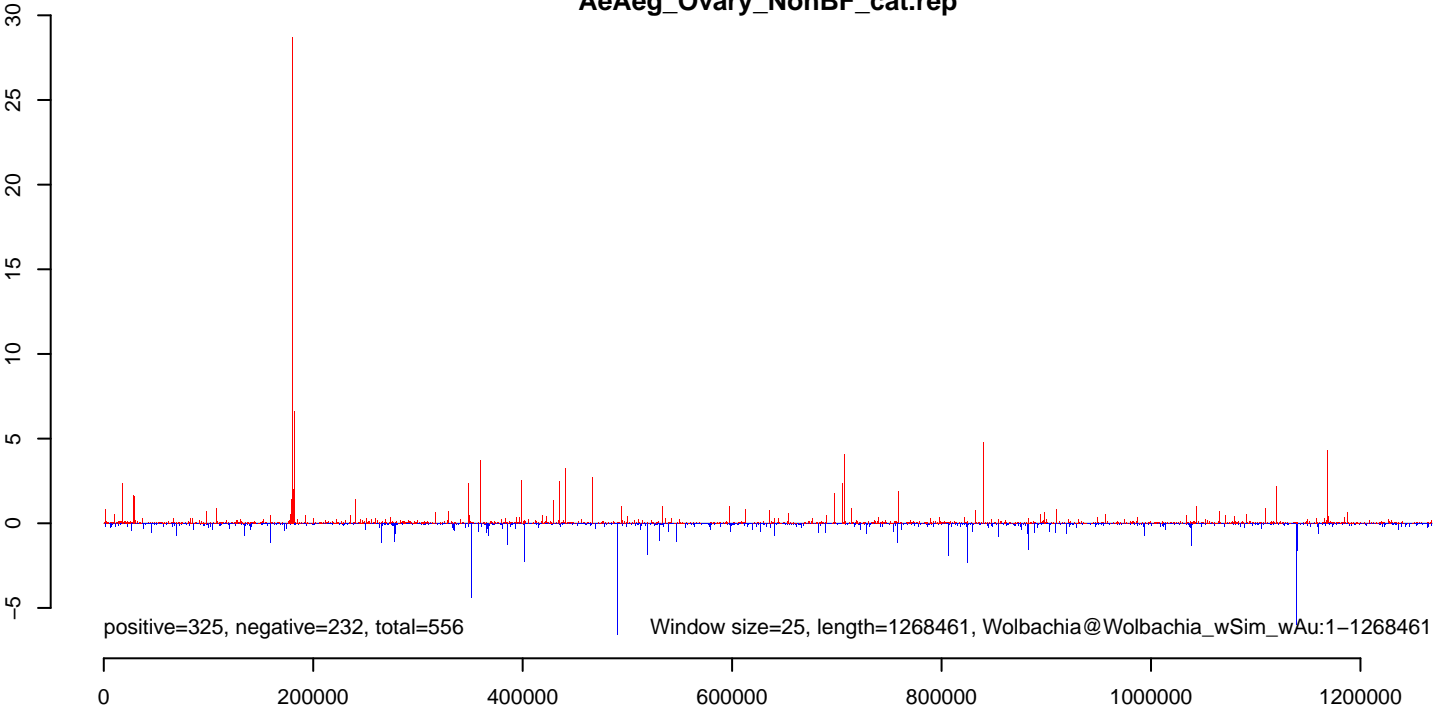
**AeAeg\_Ovary\_NonBF\_cat.18\_23.rep**



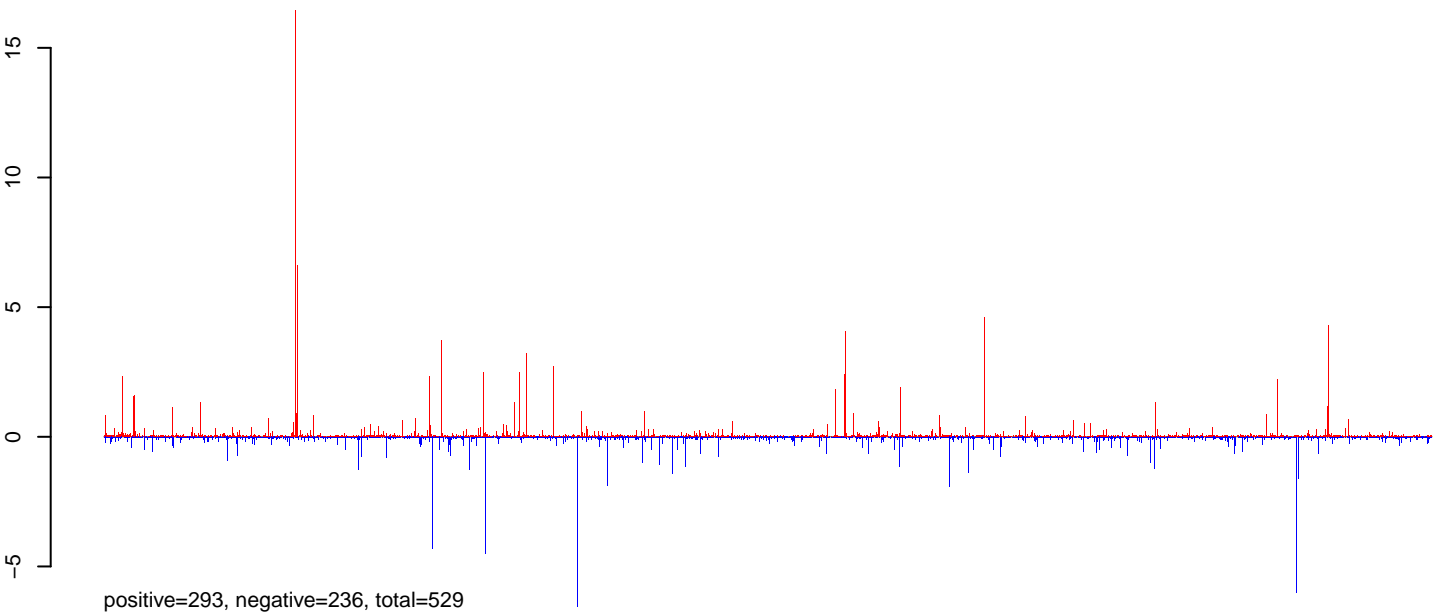
**AeAeg\_Ovary\_NonBF\_cat.24\_35.rep**



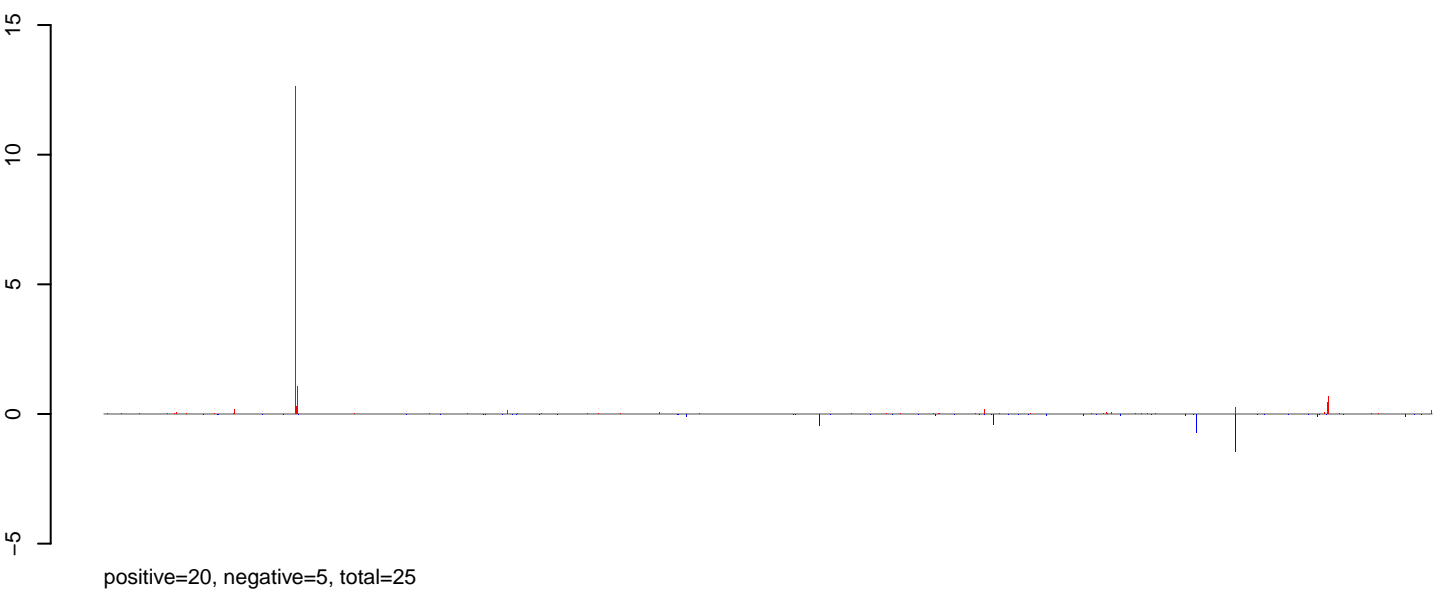
**AeAeg\_Ovary\_NonBF\_cat.rep**



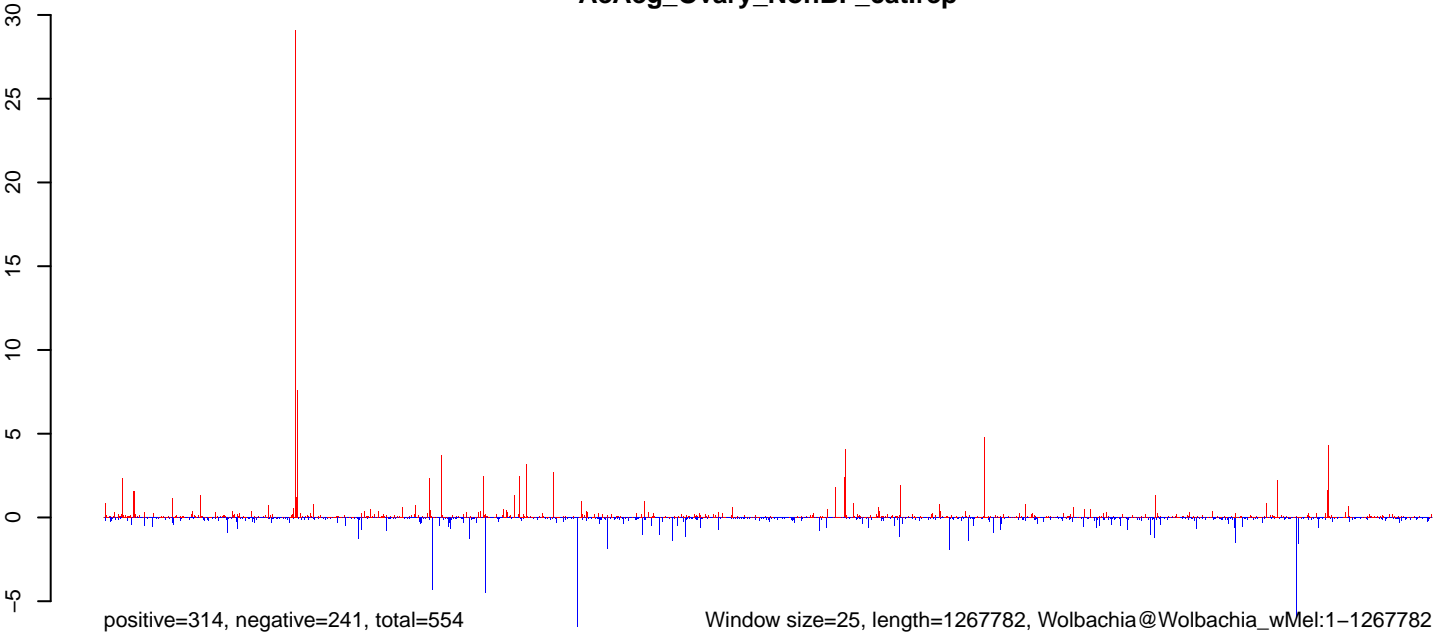
**AeAeg\_Ovary\_NonBF\_cat.18\_23.rep**



**AeAeg\_Ovary\_NonBF\_cat.24\_35.rep**



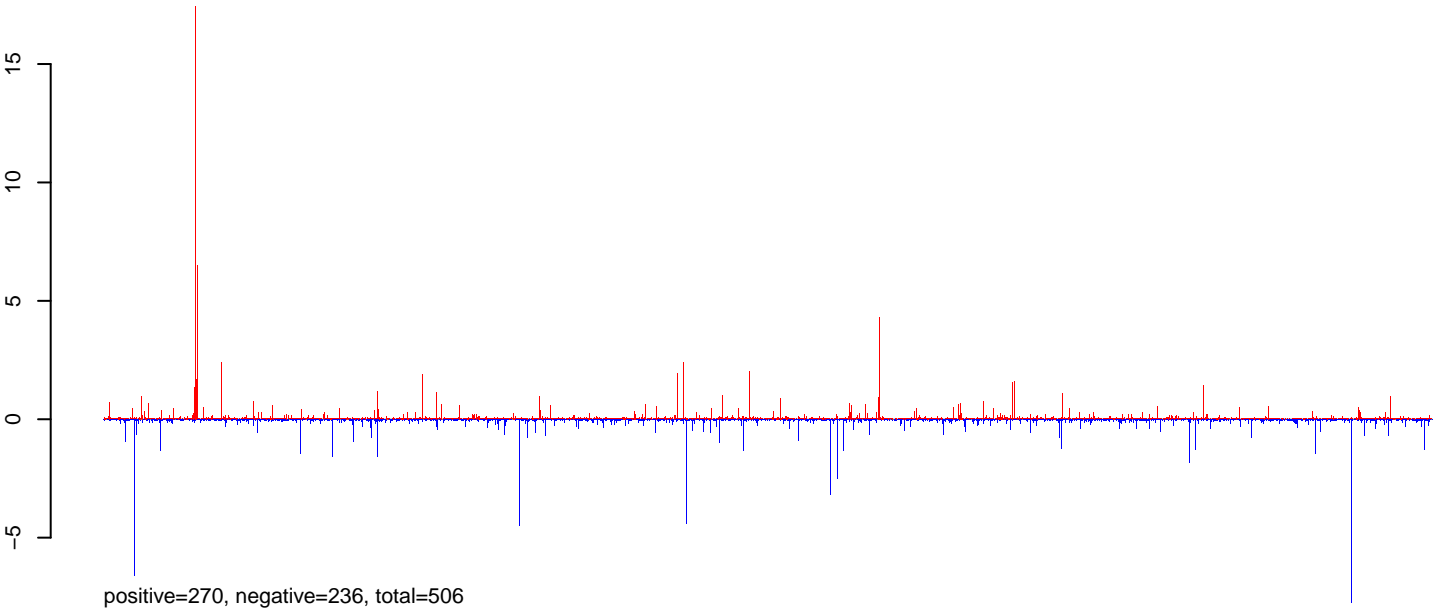
**AeAeg\_Ovary\_NonBF\_cat.rep**



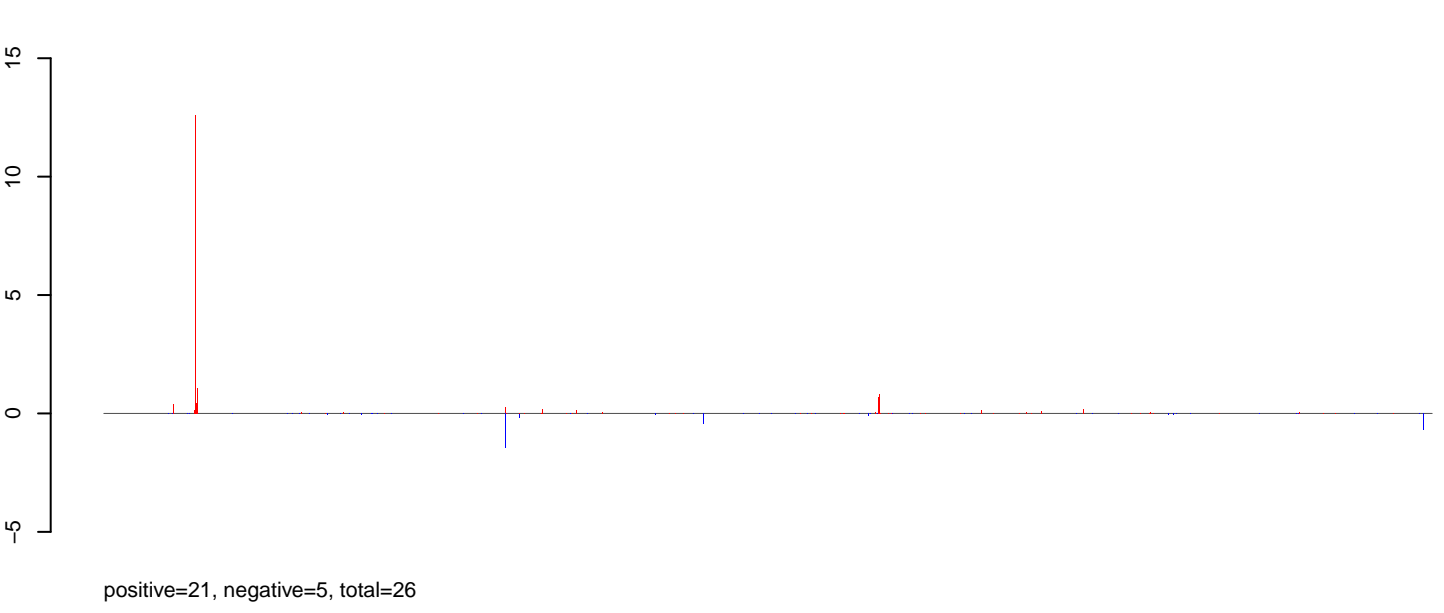
0 200000 400000 600000 800000 1000000 1200000



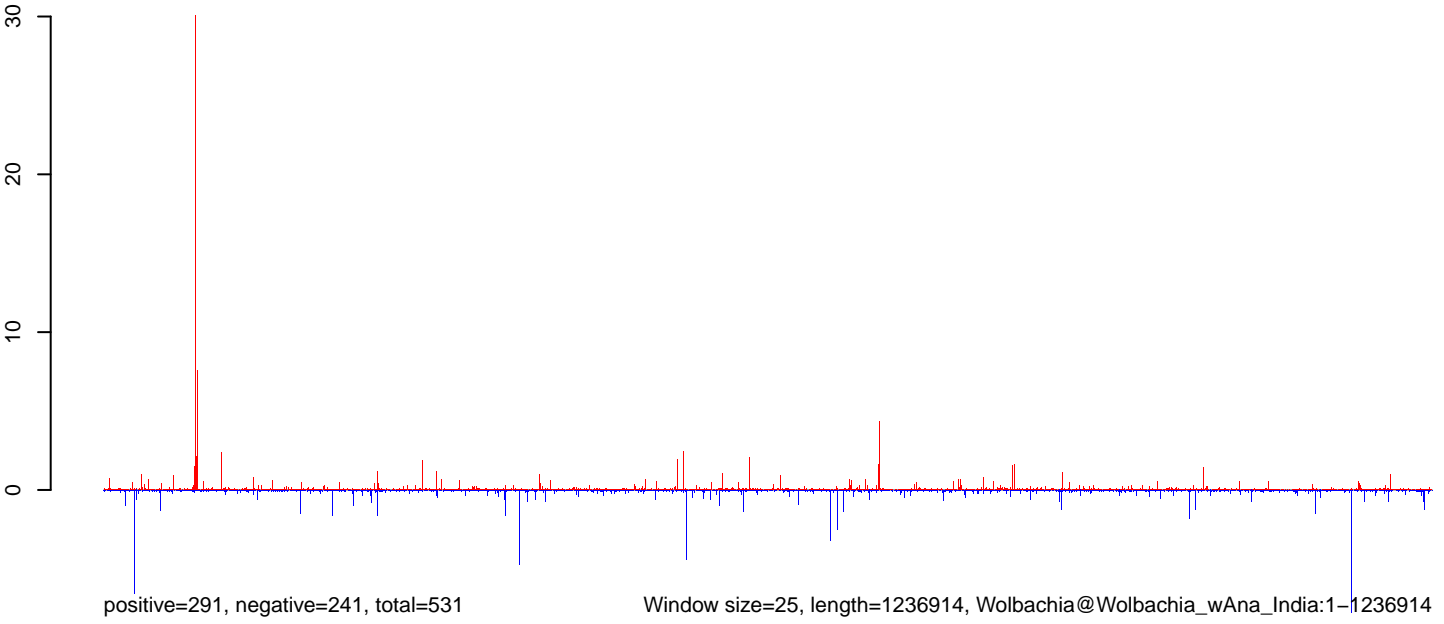
**AeAeg\_Ovary\_NonBF\_cat.18\_23.rep**



**AeAeg\_Ovary\_NonBF\_cat.24\_35.rep**

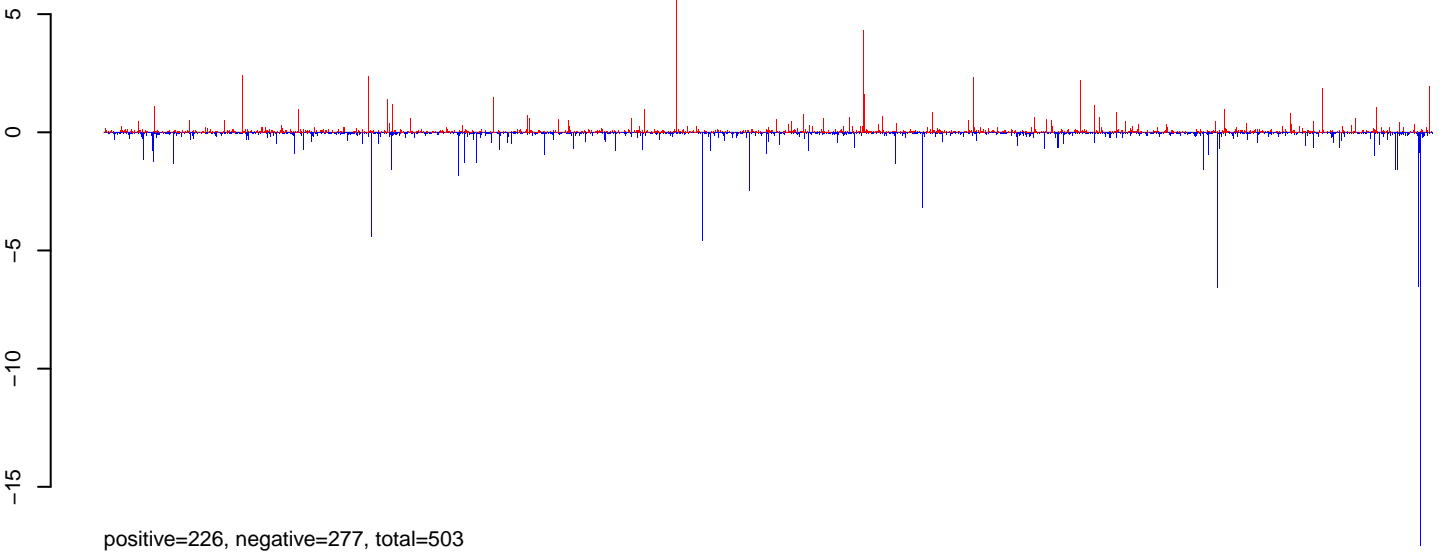


**AeAeg\_Ovary\_NonBF\_cat.rep**

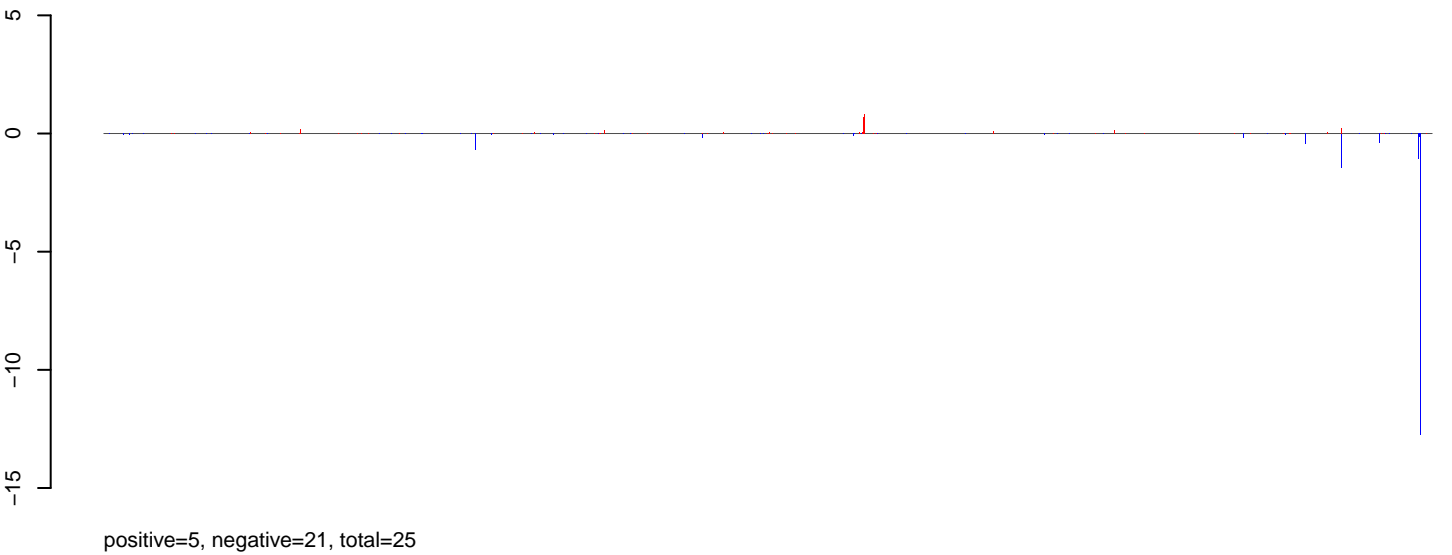


0 200000 400000 600000 800000 1000000 1200000

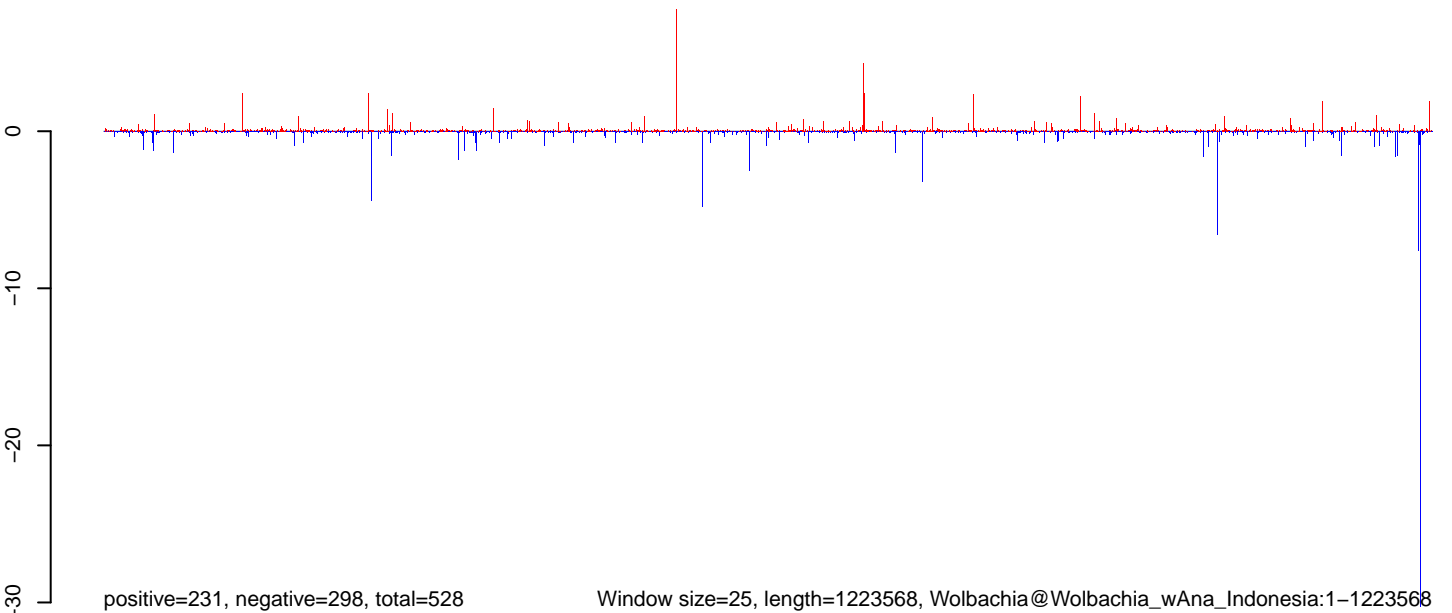
**AeAeg\_Ovary\_NonBF\_cat.18\_23.rep**



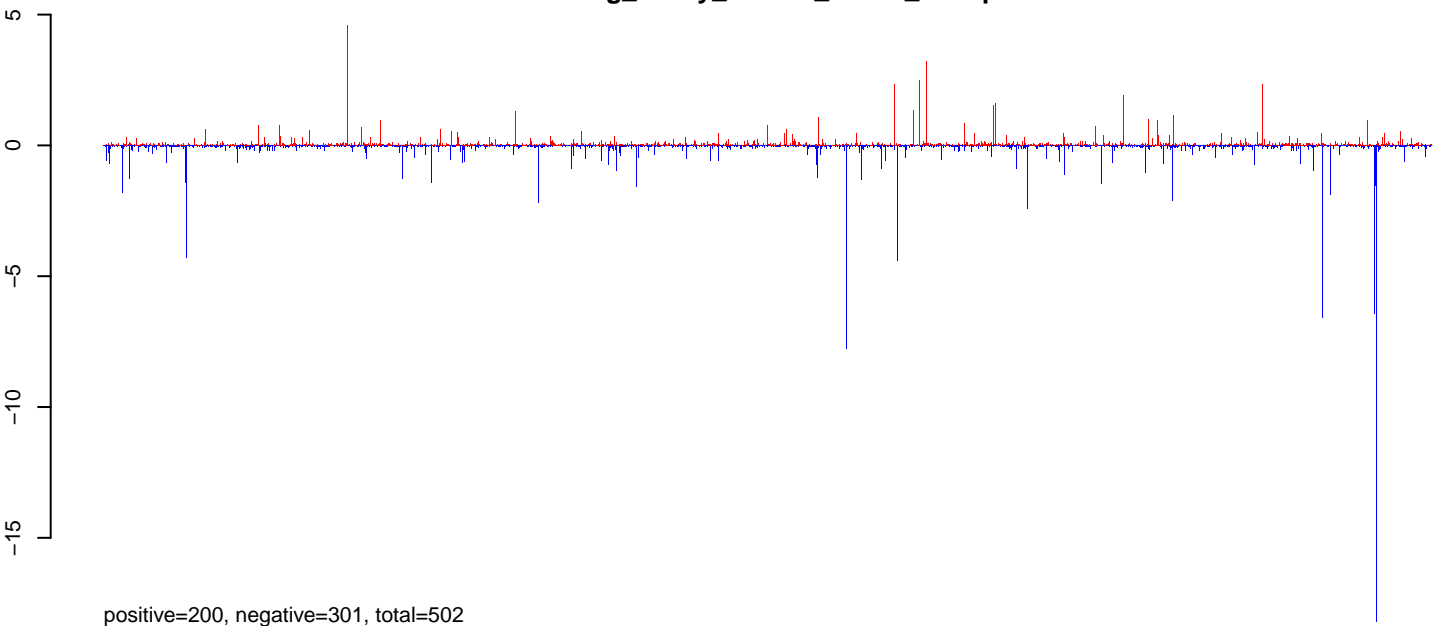
**AeAeg\_Ovary\_NonBF\_cat.24\_35.rep**



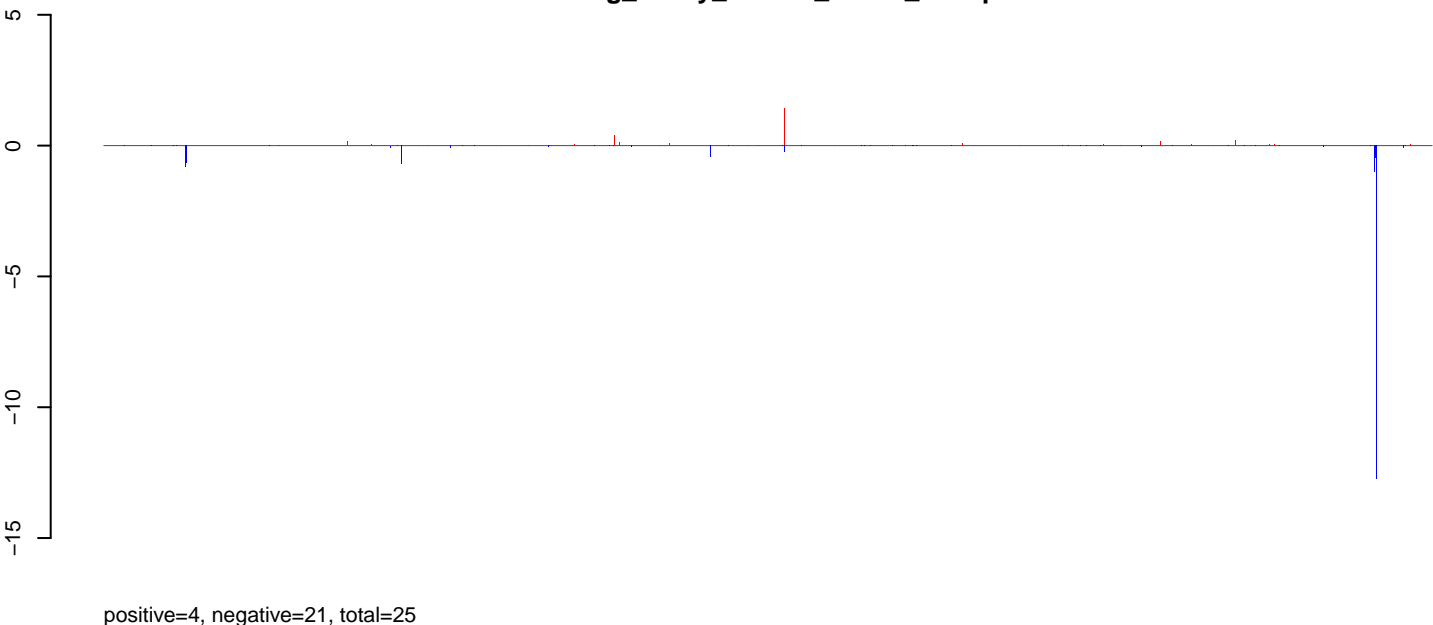
**AeAeg\_Ovary\_NonBF\_cat.rep**



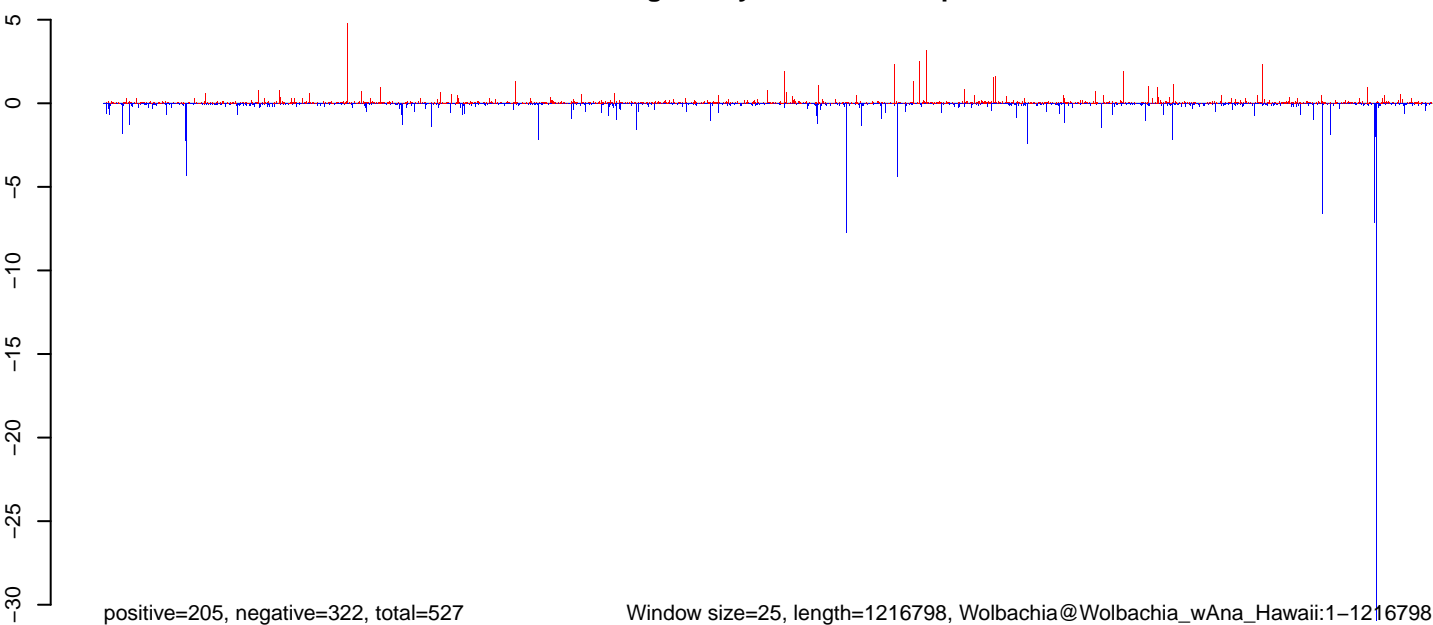
**AeAeg\_Ovary\_NonBF\_cat.18\_23.rep**



**AeAeg\_Ovary\_NonBF\_cat.24\_35.rep**

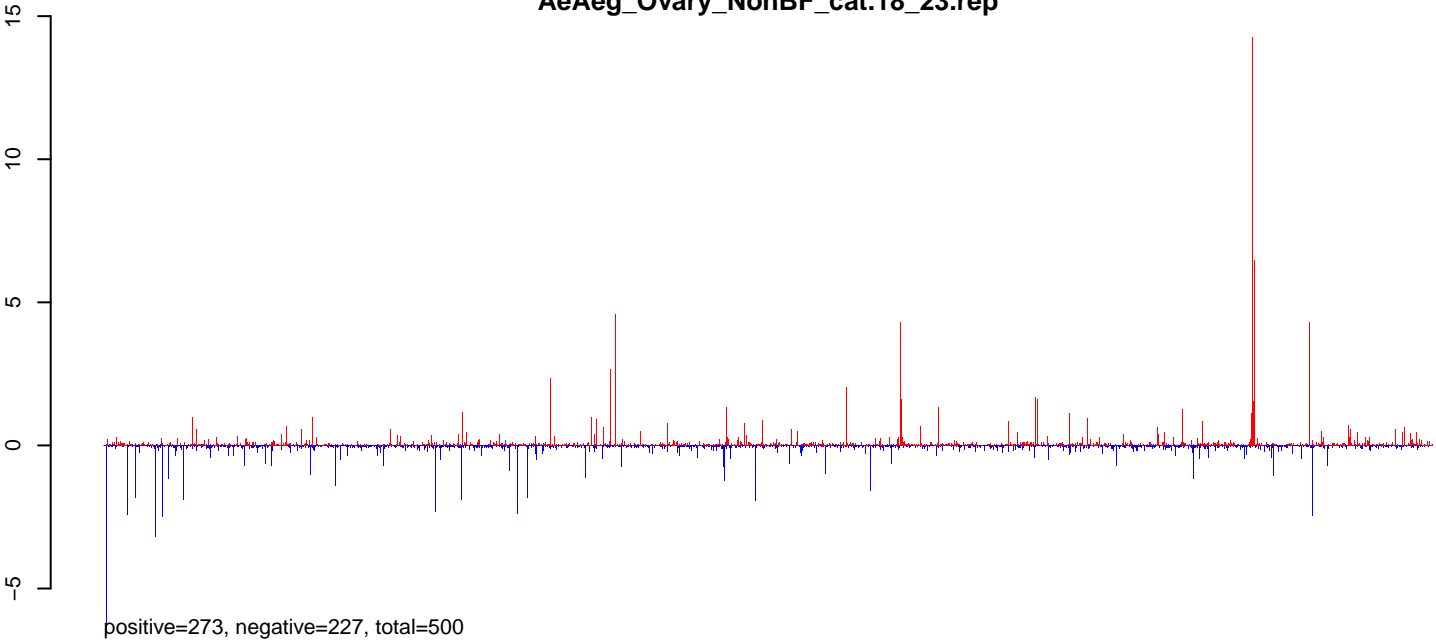


**AeAeg\_Ovary\_NonBF\_cat.rep**

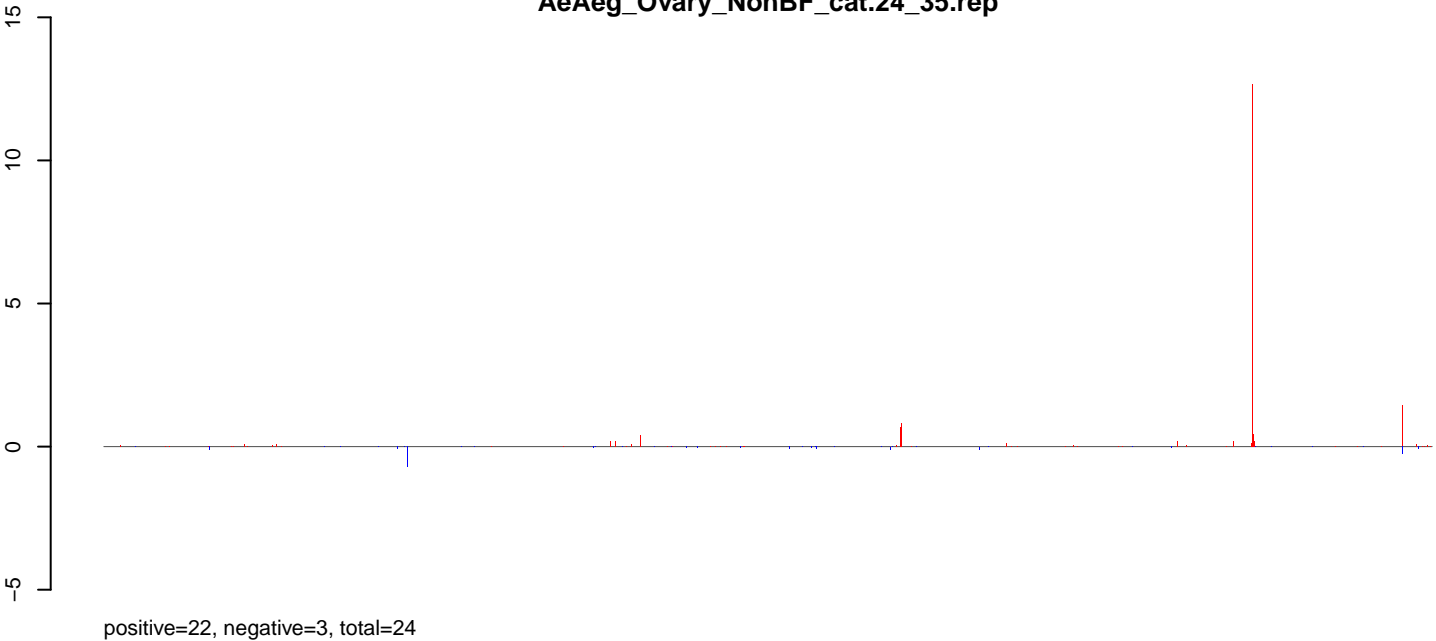


0 200000 400000 600000 800000 1000000 1200000

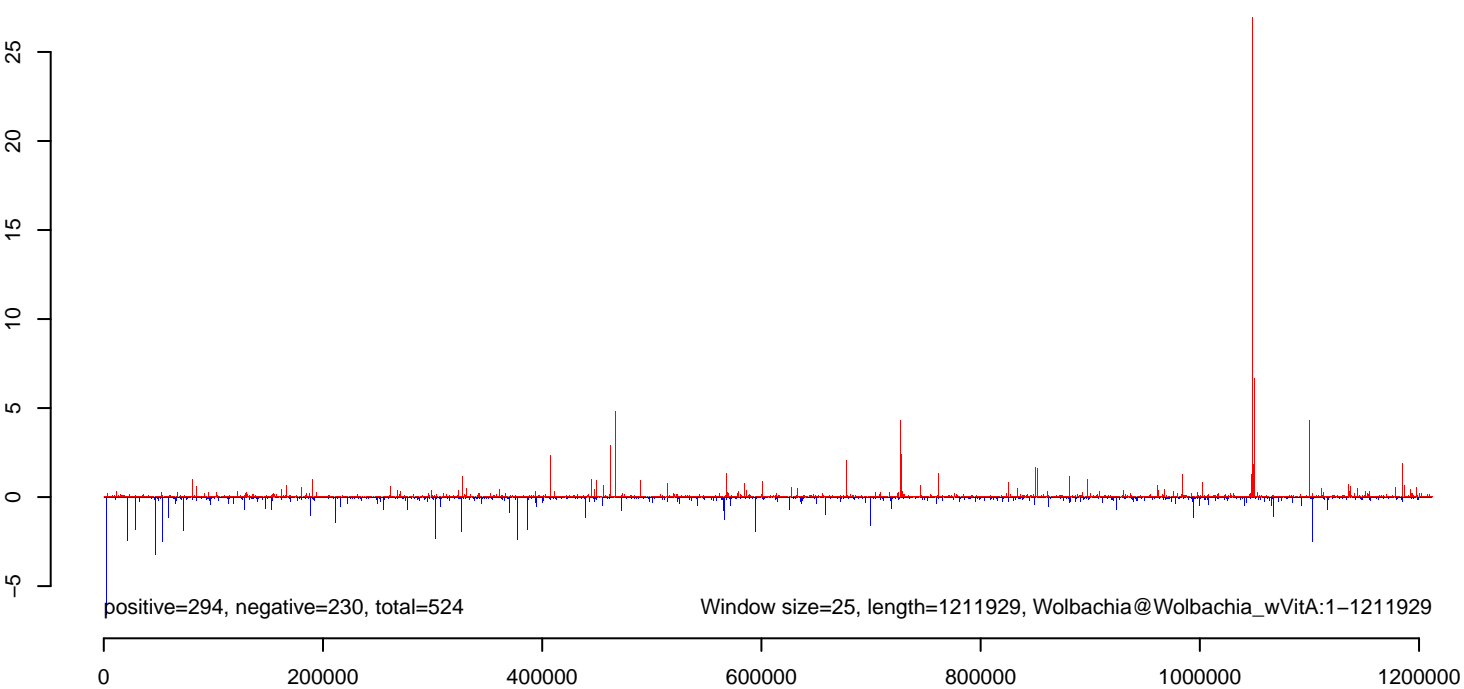
**AeAeg\_Ovary\_NonBF\_cat.18\_23.rep**



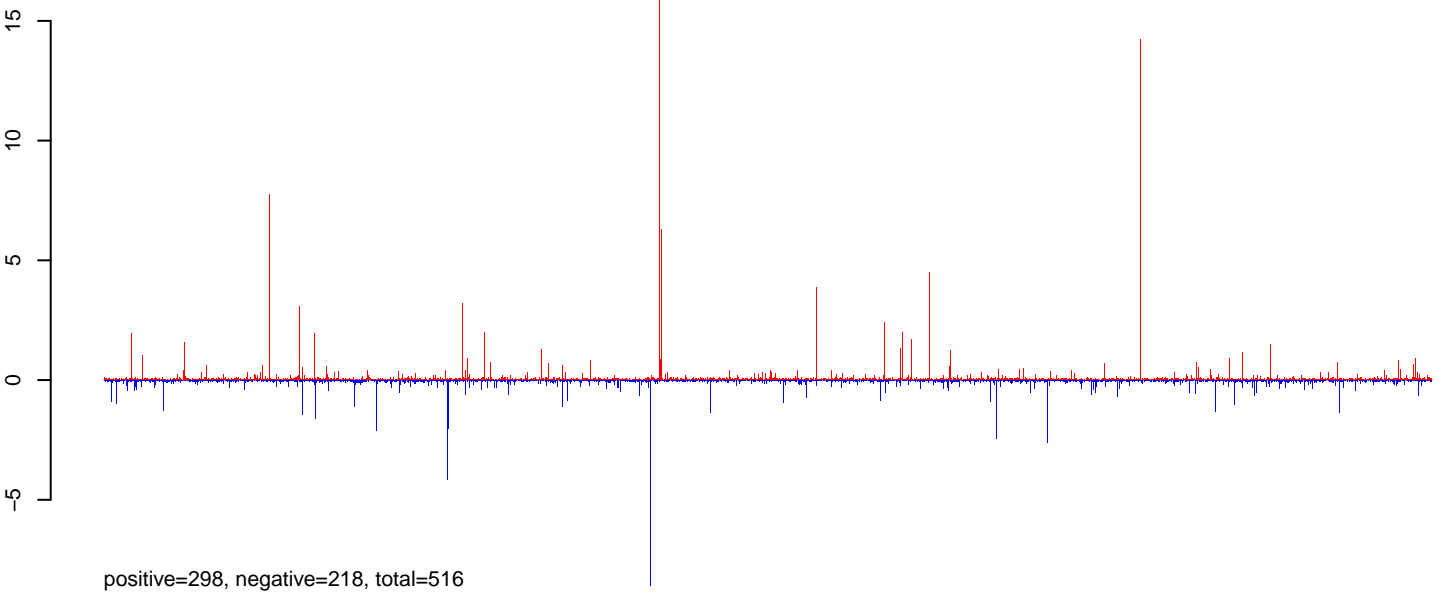
**AeAeg\_Ovary\_NonBF\_cat.24\_35.rep**



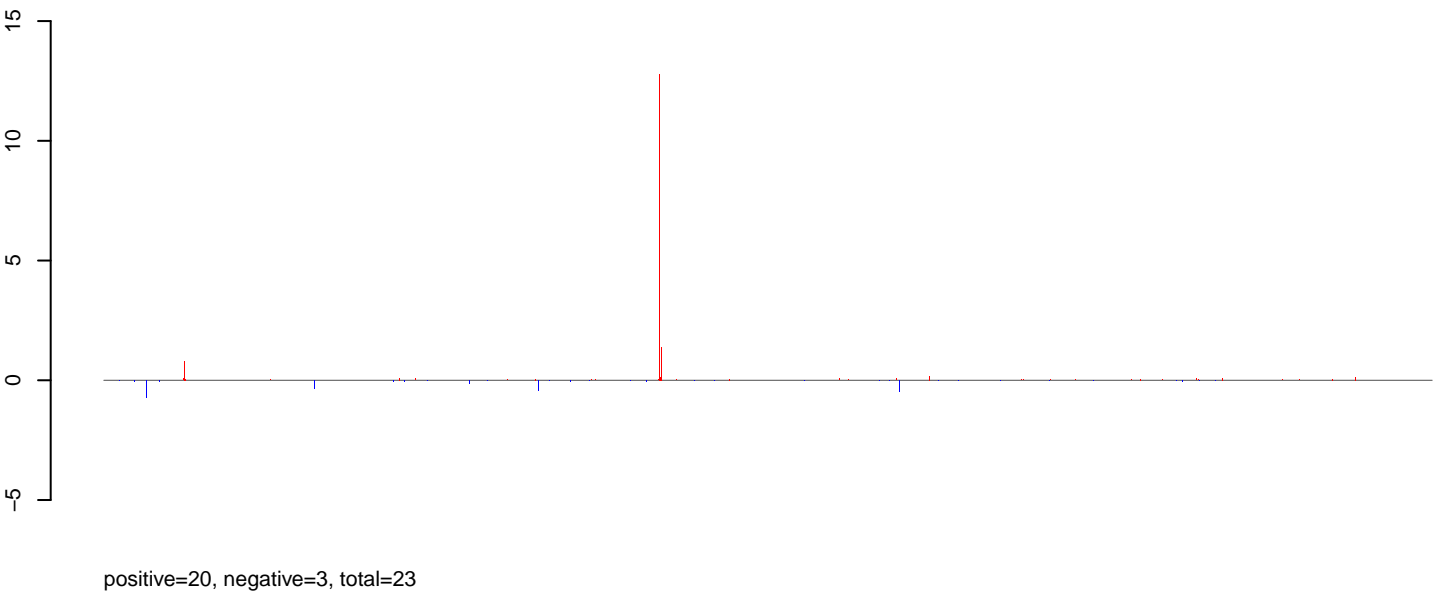
**AeAeg\_Ovary\_NonBF\_cat.rep**



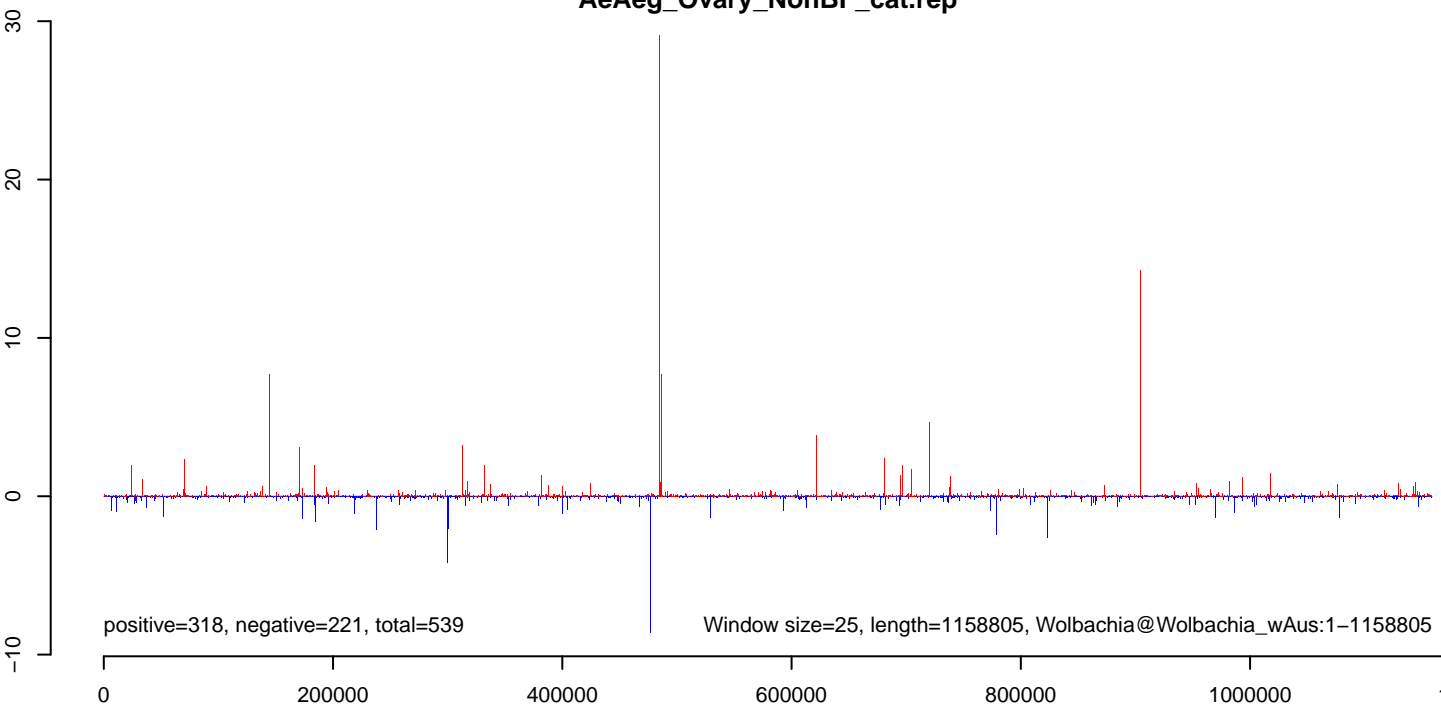
**AeAeg\_Ovary\_NonBF\_cat.18\_23.rep**



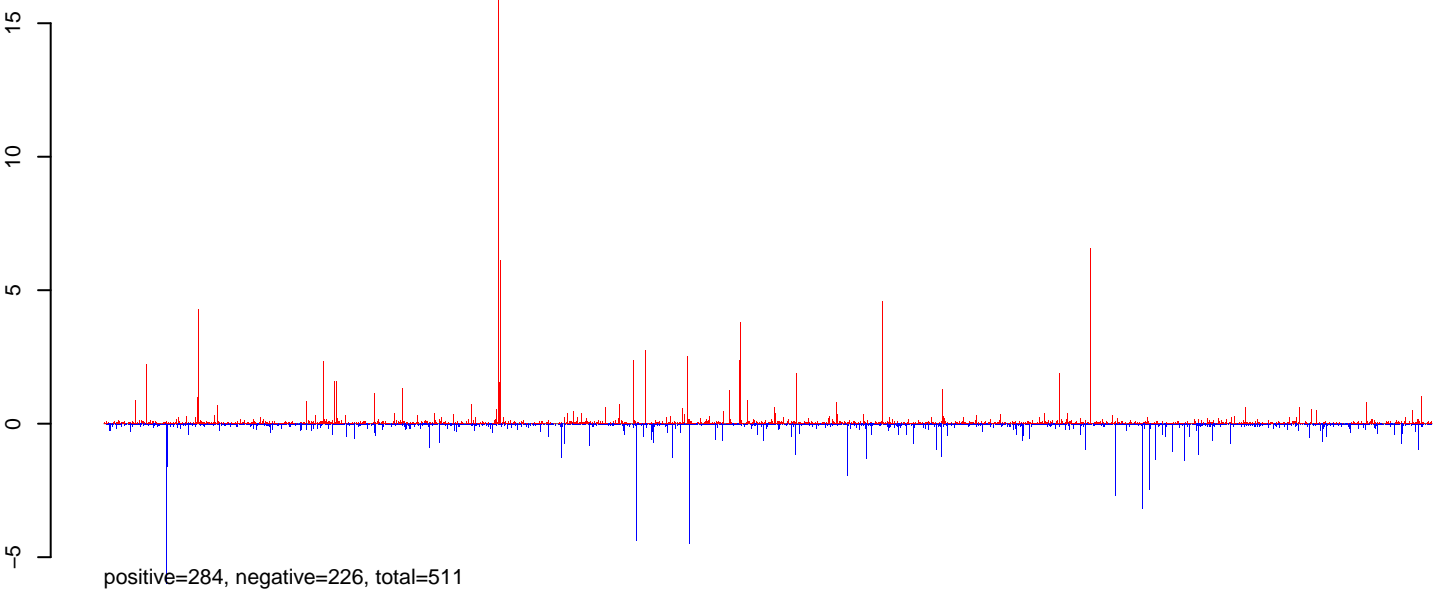
**AeAeg\_Ovary\_NonBF\_cat.24\_35.rep**



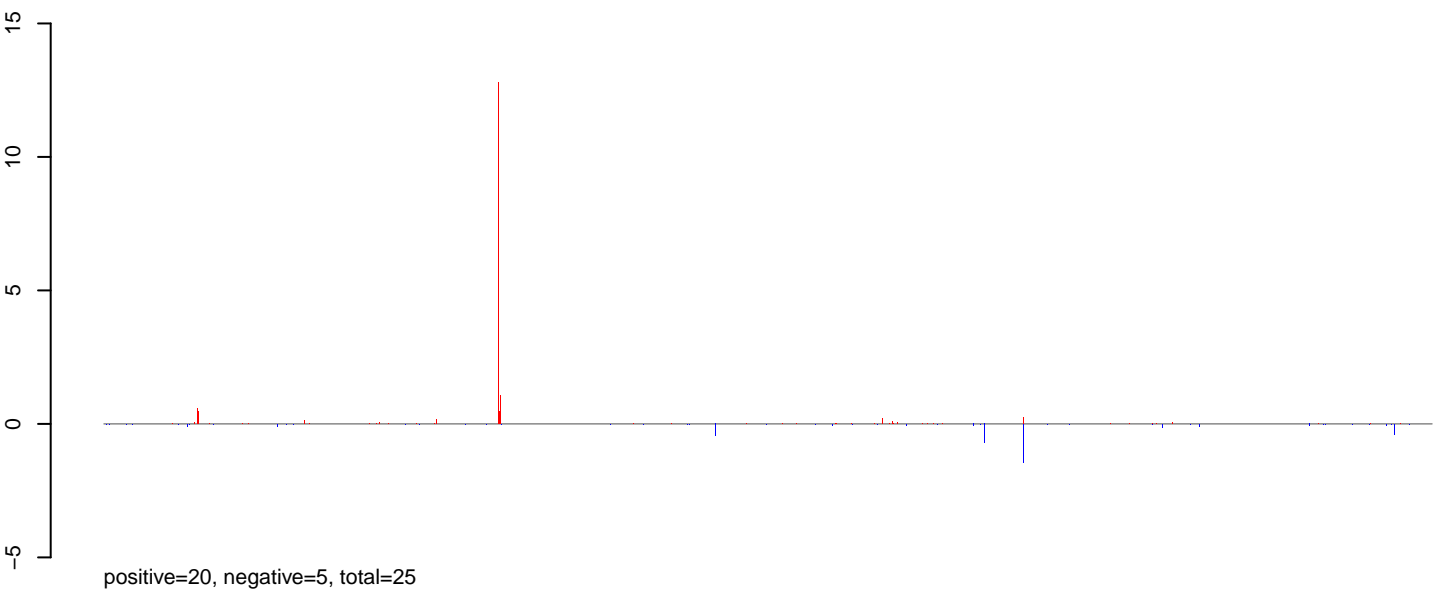
**AeAeg\_Ovary\_NonBF\_cat.rep**



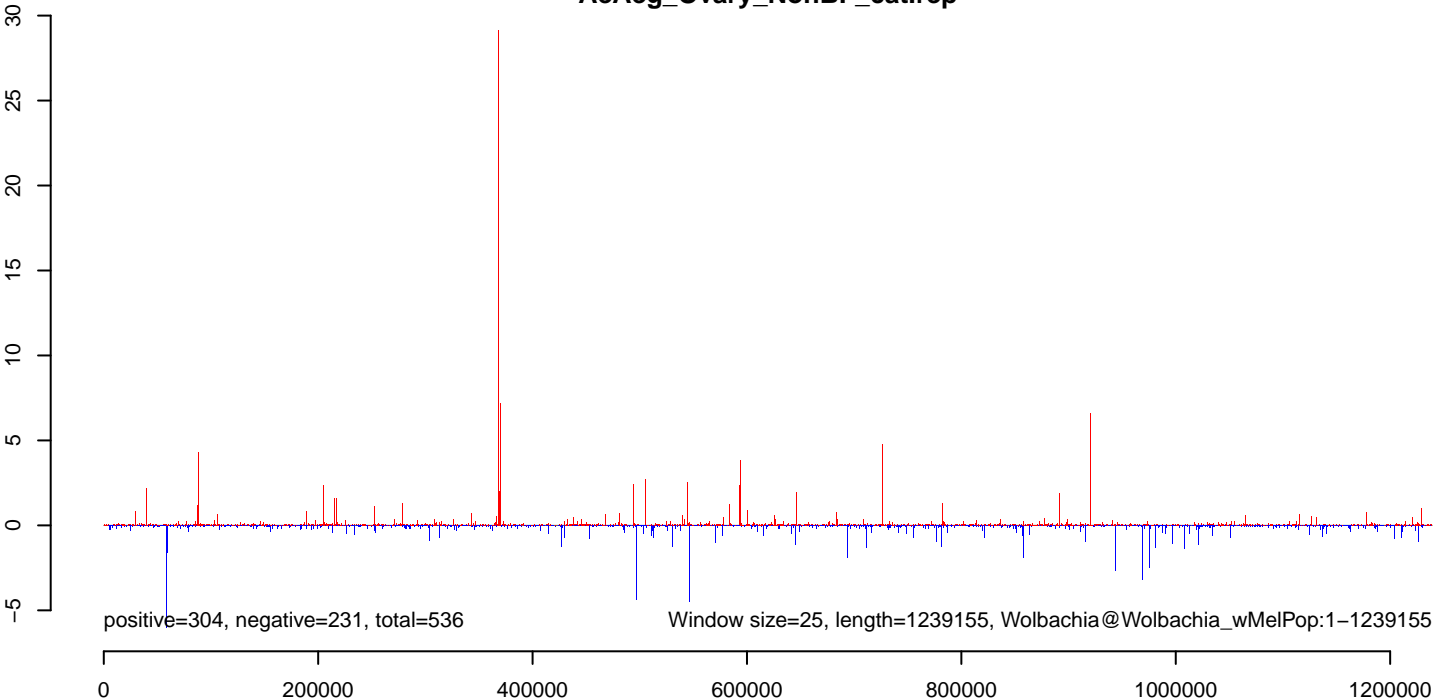
**AeAeg\_Ovary\_NonBF\_cat.18\_23.rep**



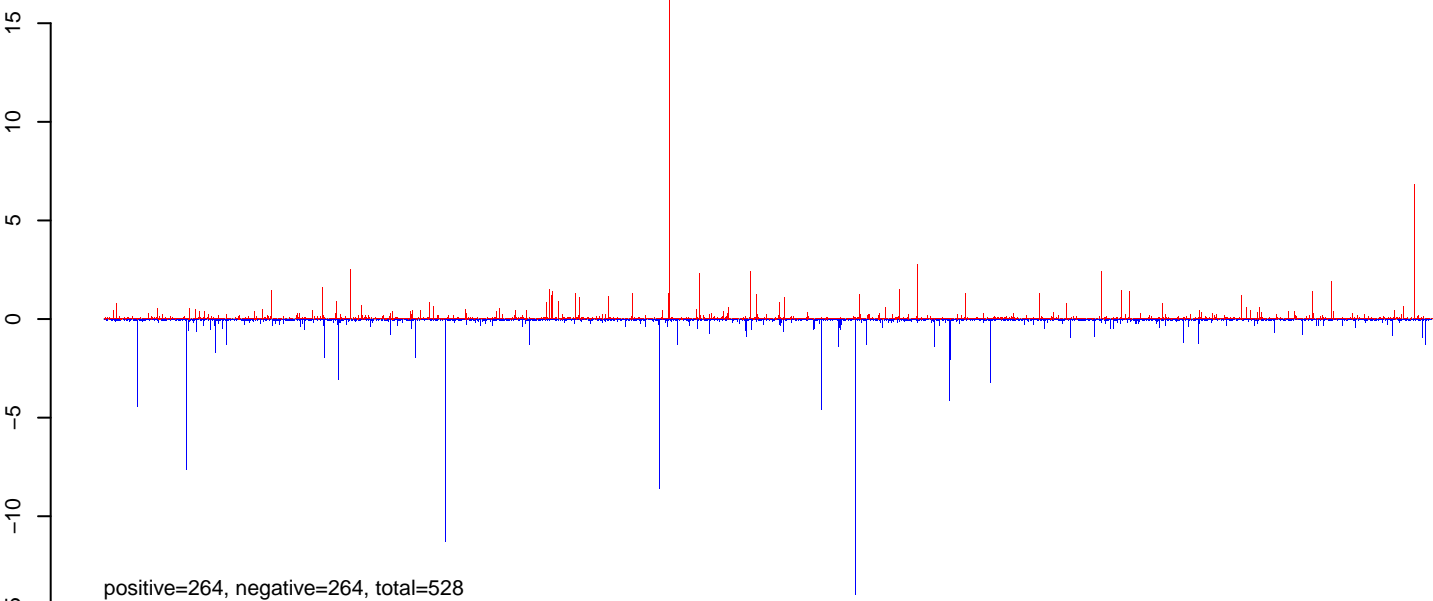
**AeAeg\_Ovary\_NonBF\_cat.24\_35.rep**



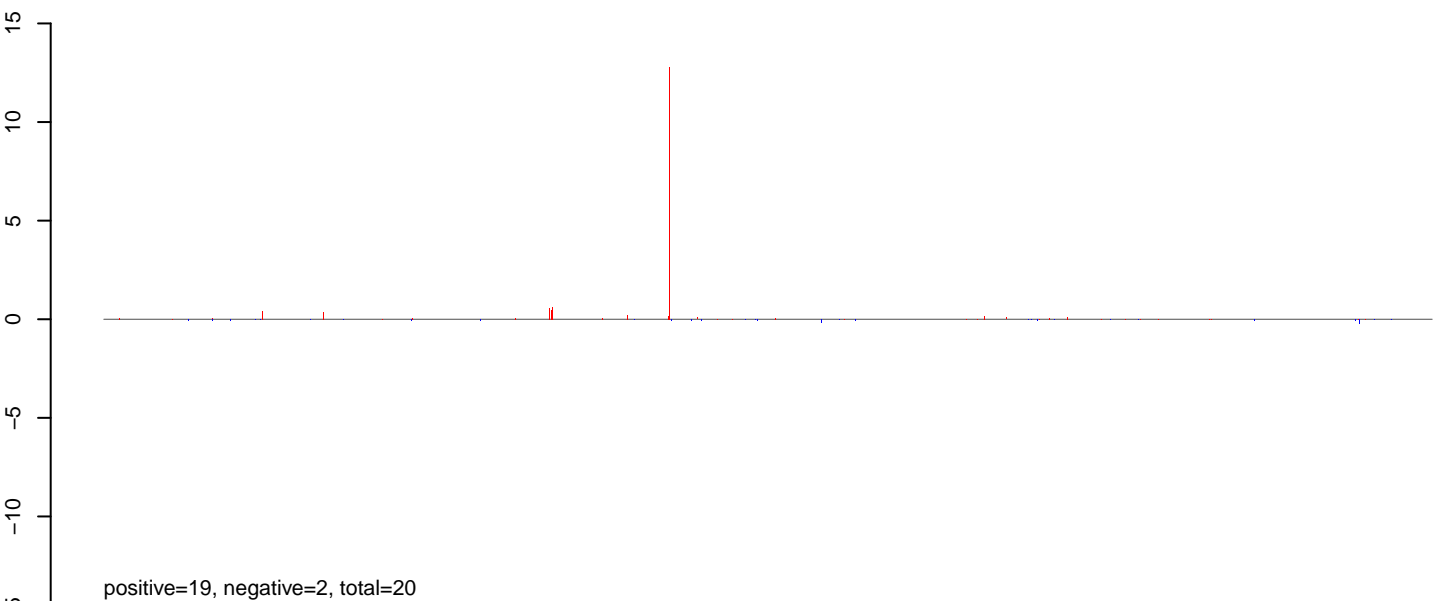
**AeAeg\_Ovary\_NonBF\_cat.rep**



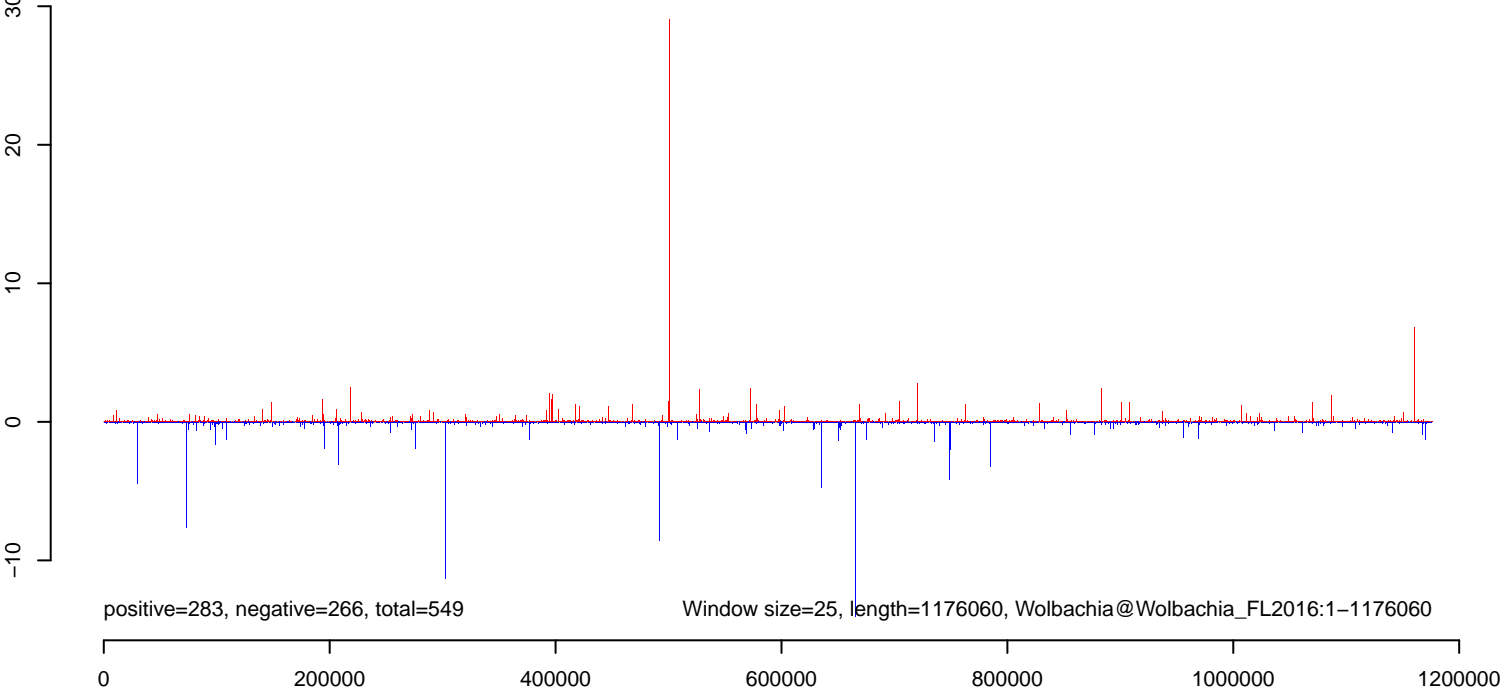
**AeAeg\_Ovary\_NonBF\_cat.18\_23.rep**



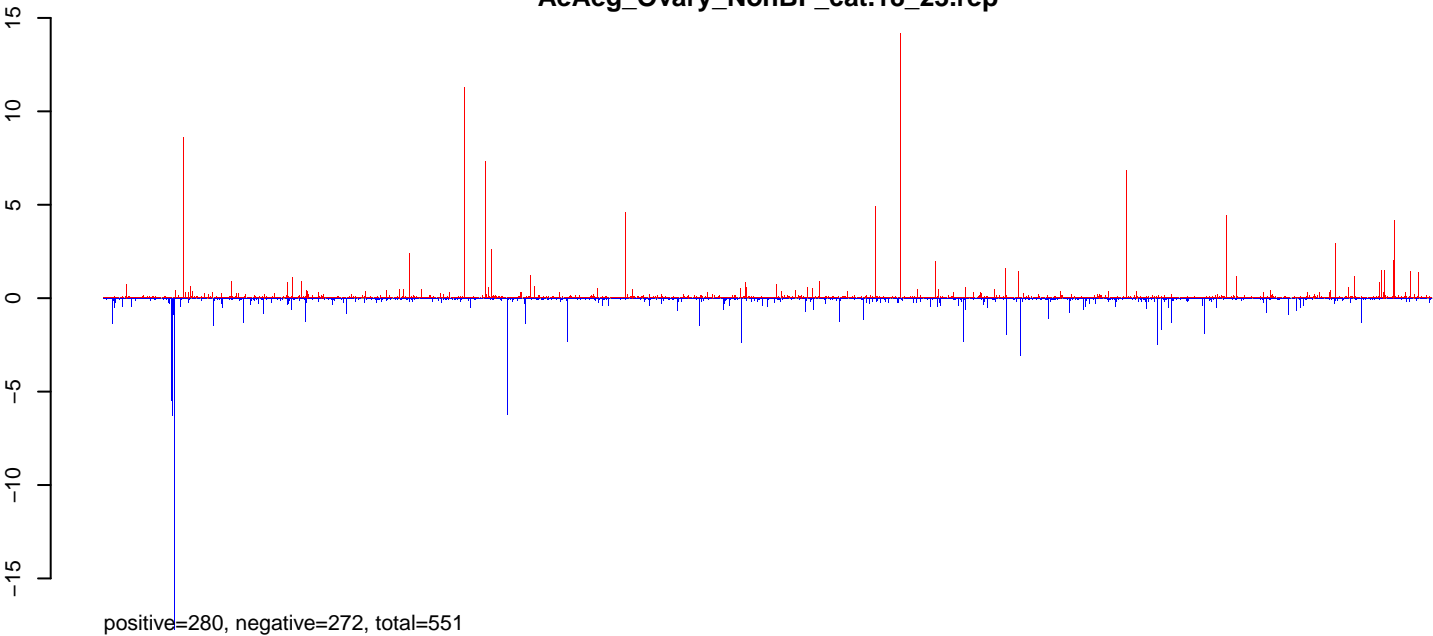
**AeAeg\_Ovary\_NonBF\_cat.24\_35.rep**



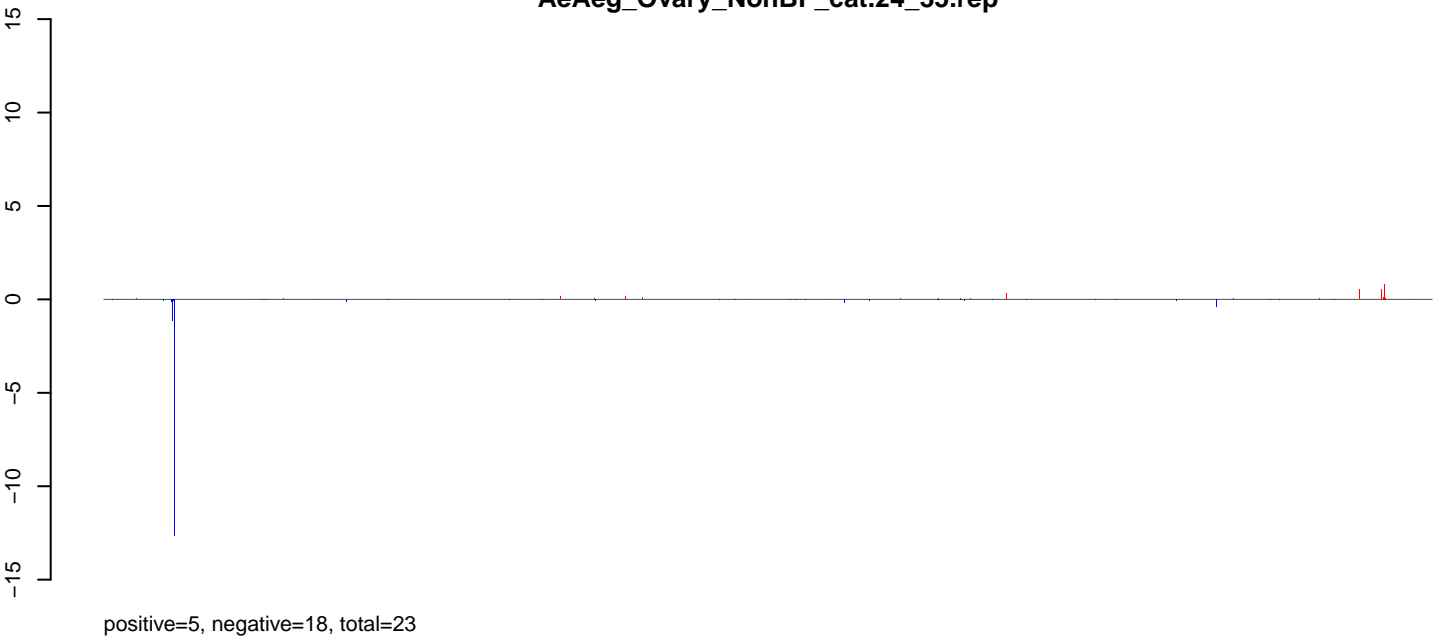
**AeAeg\_Ovary\_NonBF\_cat.rep**



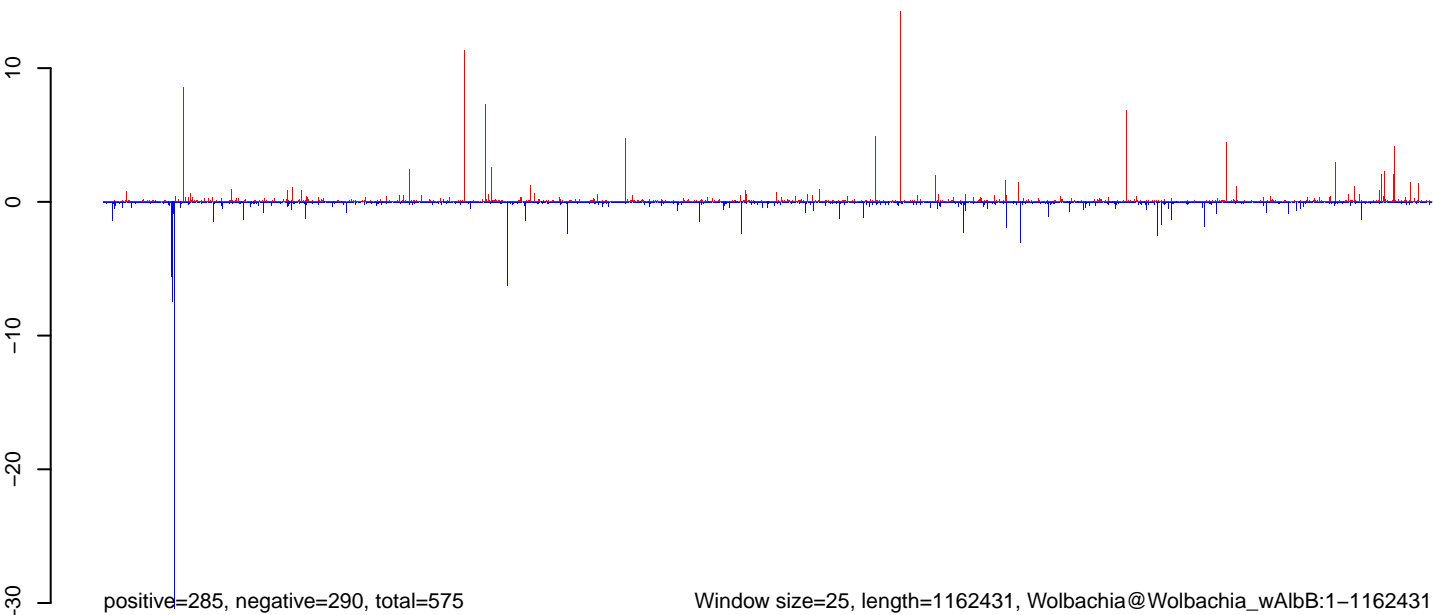
**AeAeg\_Ovary\_NonBF\_cat.18\_23.rep**



**AeAeg\_Ovary\_NonBF\_cat.24\_35.rep**



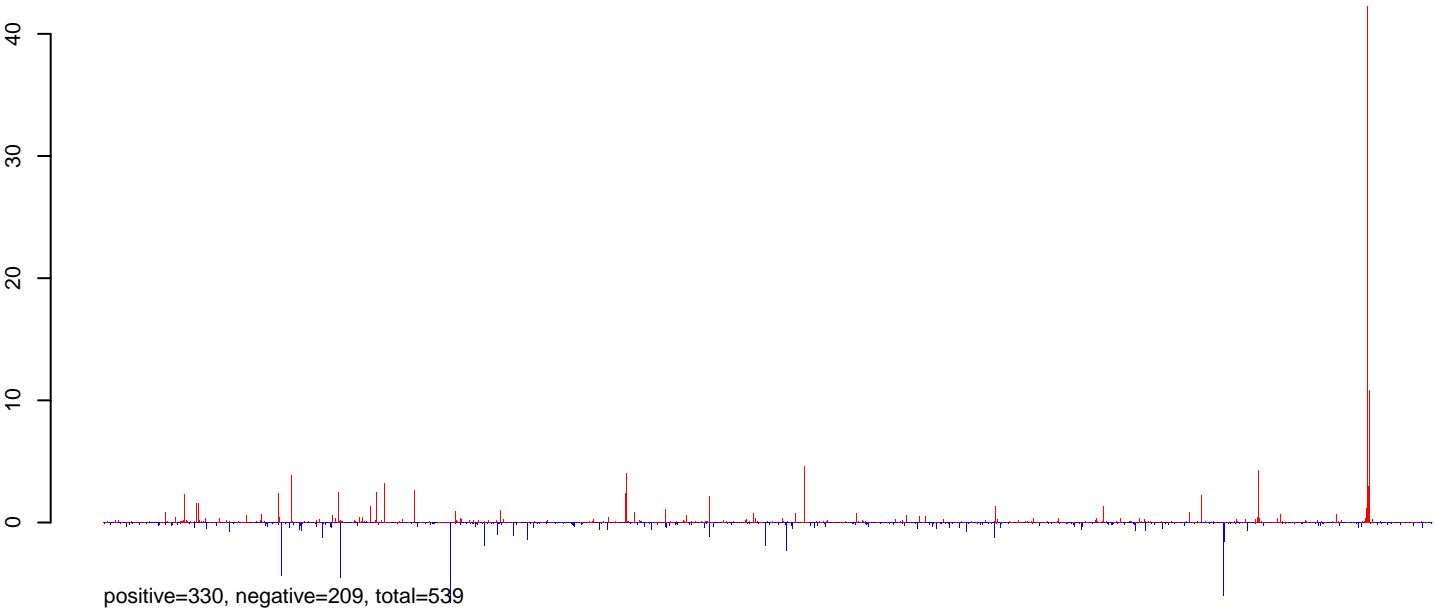
**AeAeg\_Ovary\_NonBF\_cat.rep**



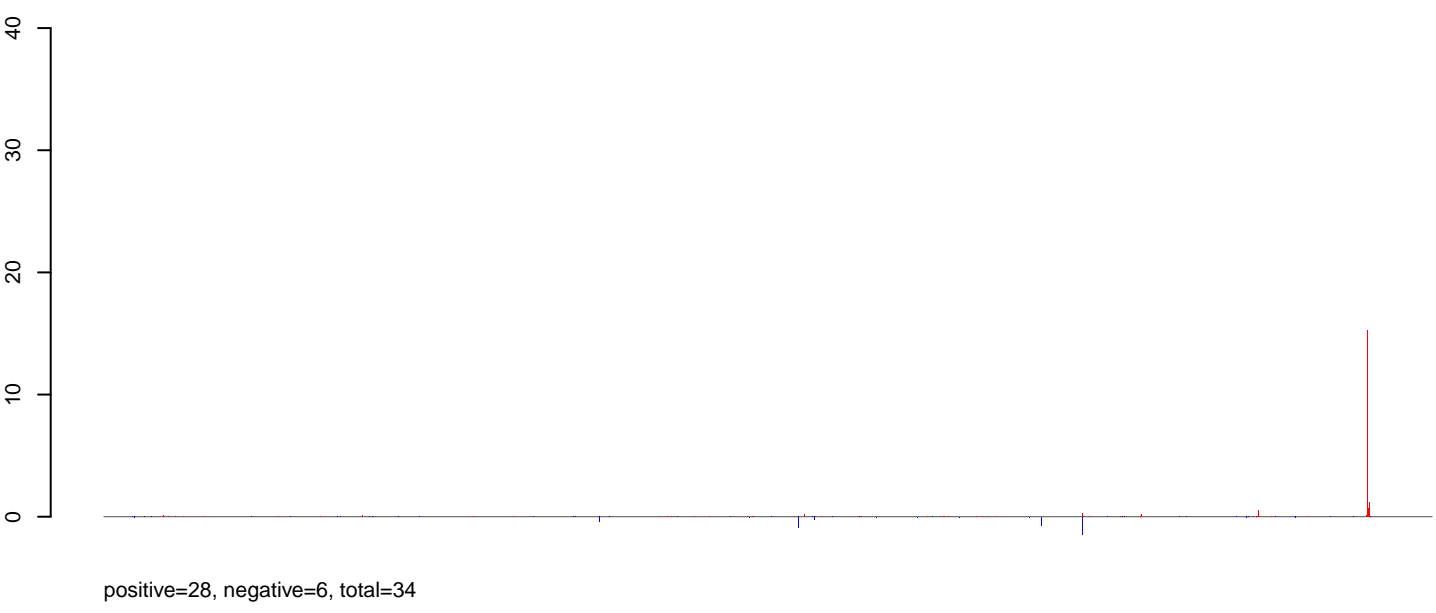
0 200000 400000 600000 800000 1000000 1200000



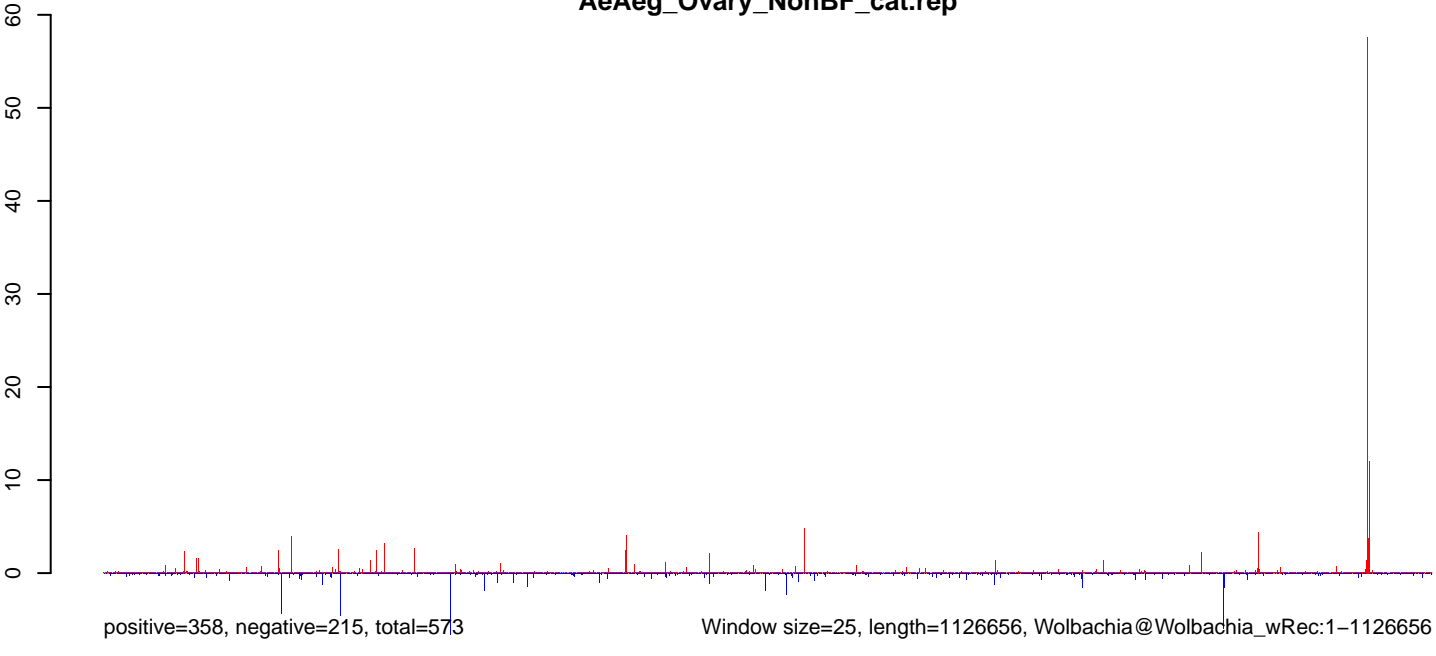
**AeAeg\_Ovary\_NonBF\_cat.18\_23.rep**



**AeAeg\_Ovary\_NonBF\_cat.24\_35.rep**

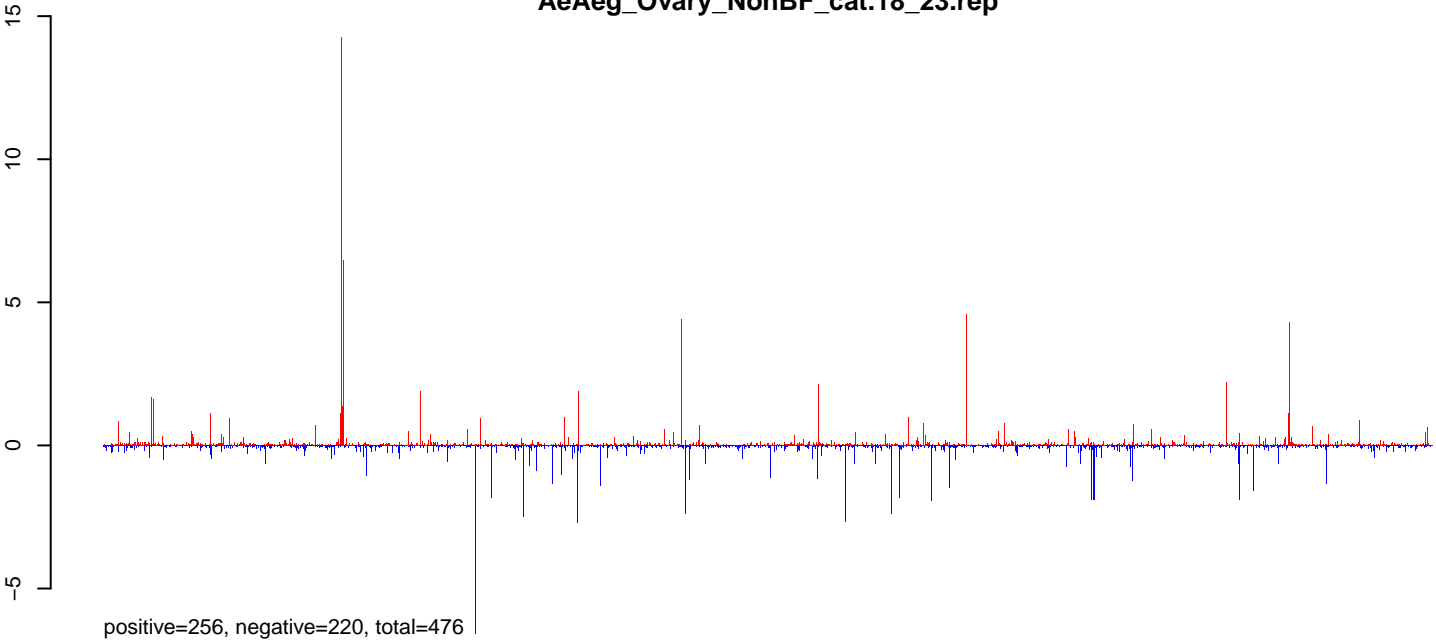


**AeAeg\_Ovary\_NonBF\_cat.rep**

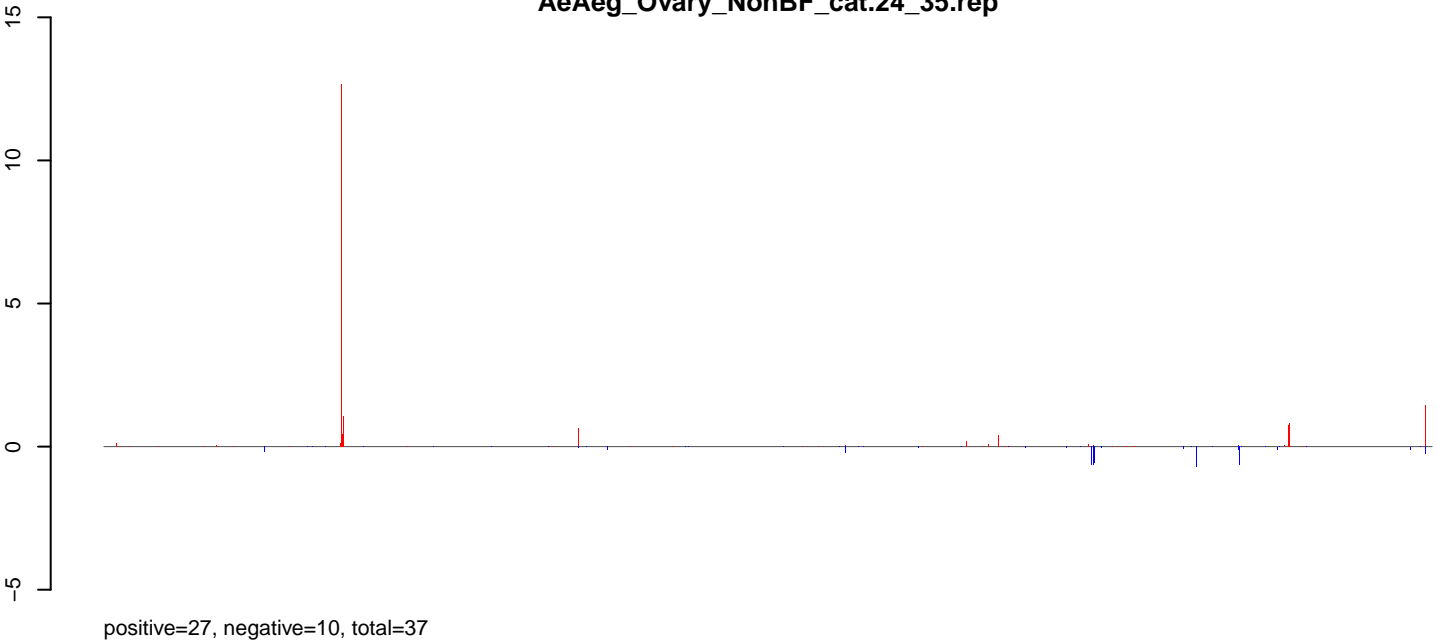


0e+00 2e+05 4e+05 6e+05 8e+05 1e+06

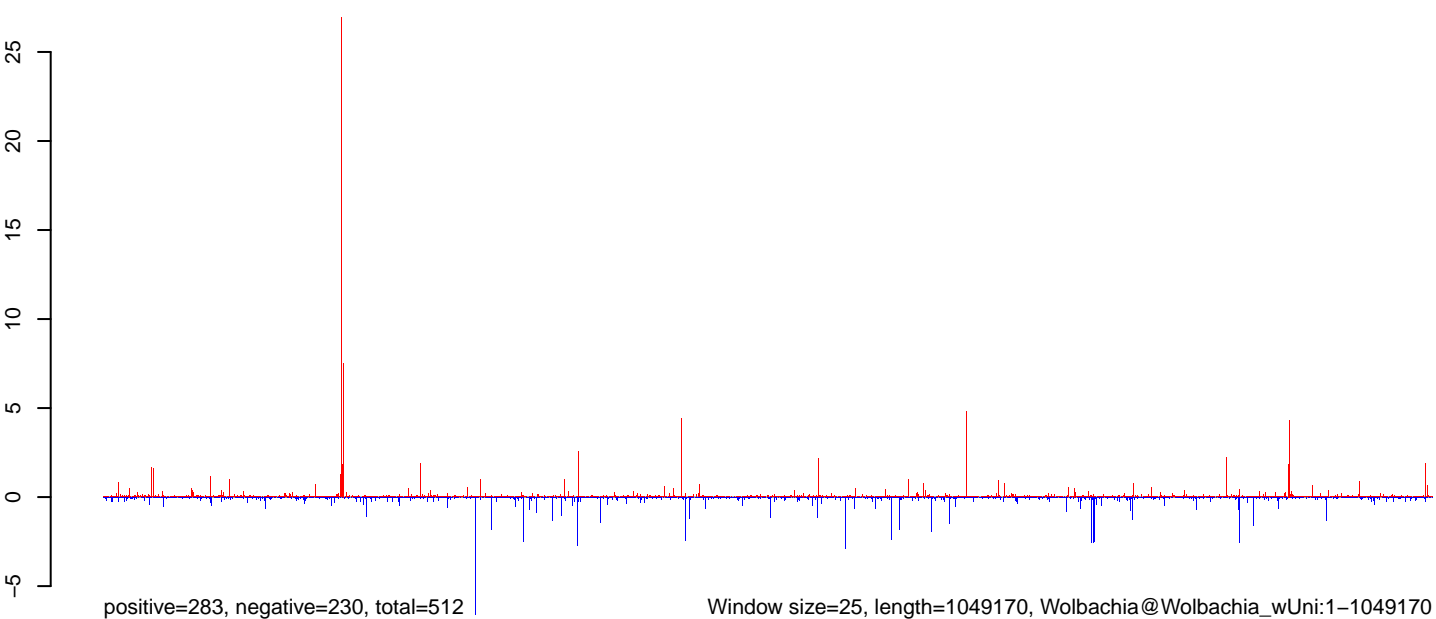
**AeAeg\_Ovary\_NonBF\_cat.18\_23.rep**



**AeAeg\_Ovary\_NonBF\_cat.24\_35.rep**

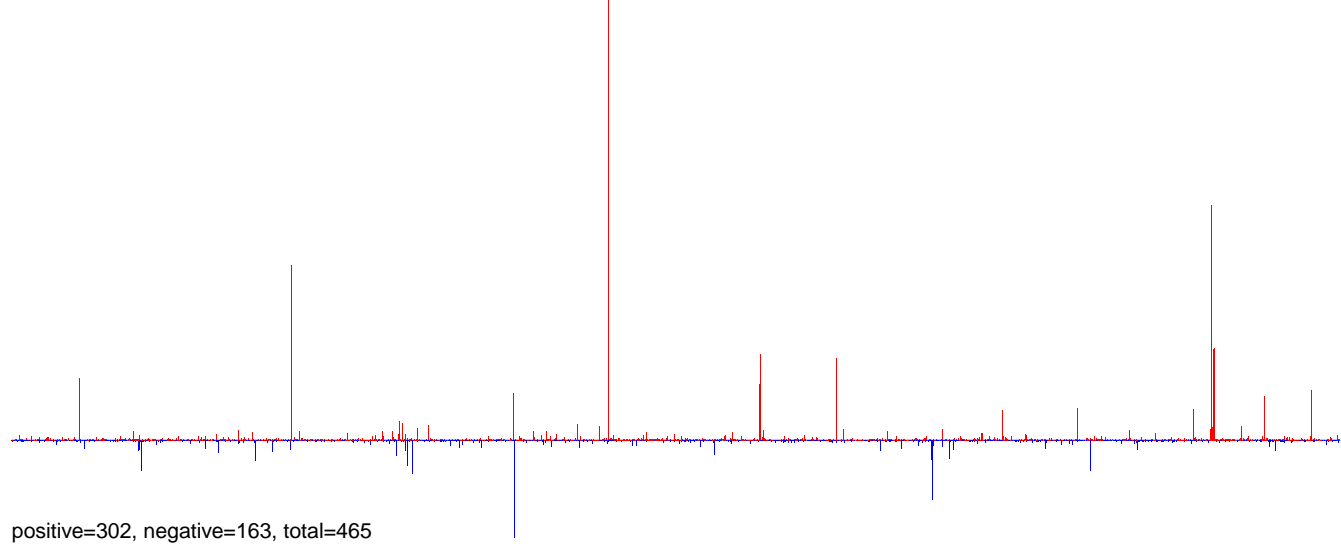


**AeAeg\_Ovary\_NonBF\_cat.rep**

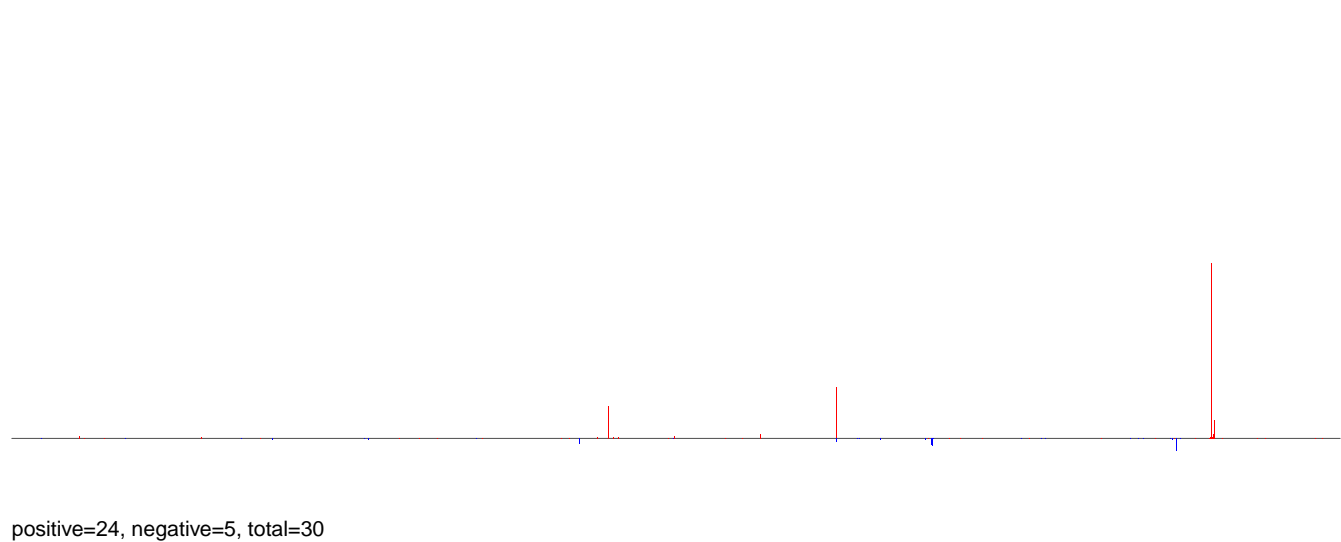


0e+00 2e+05 4e+05 6e+05 8e+05 1e+06

**AeAeg\_Ovary\_NonBF\_cat.18\_23.rep**



**AeAeg\_Ovary\_NonBF\_cat.24\_35.rep**



**AeAeg\_Ovary\_NonBF\_cat.rep**

