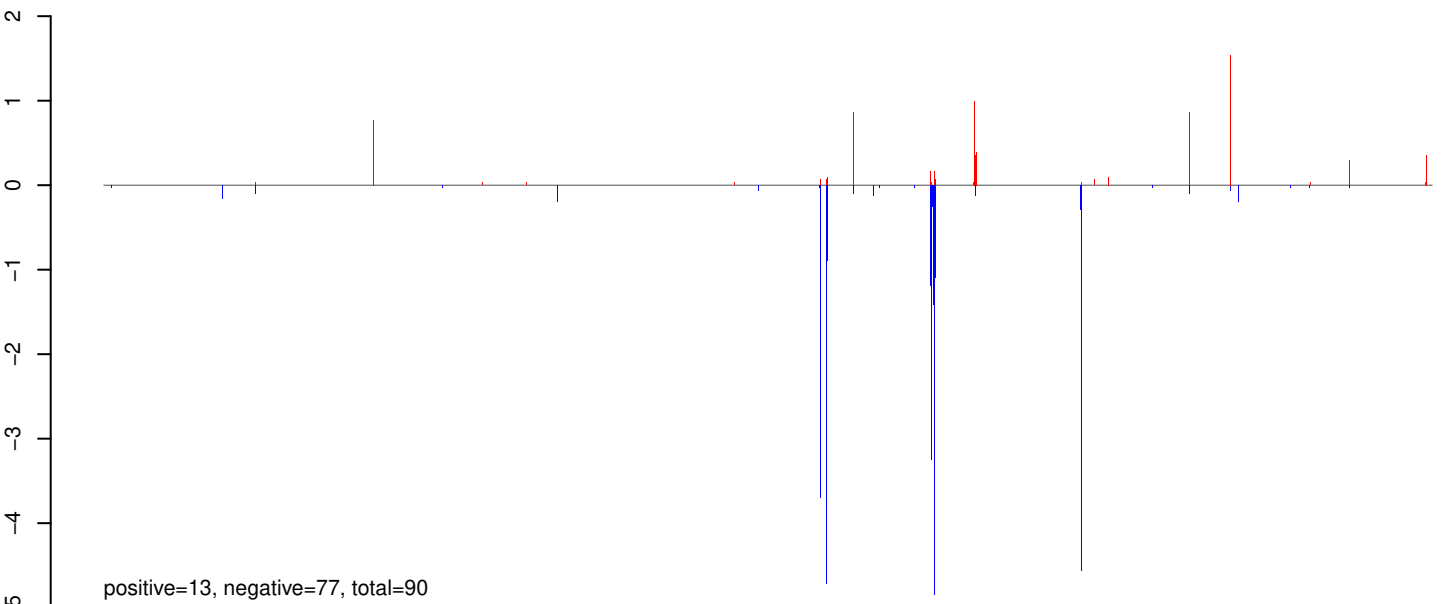
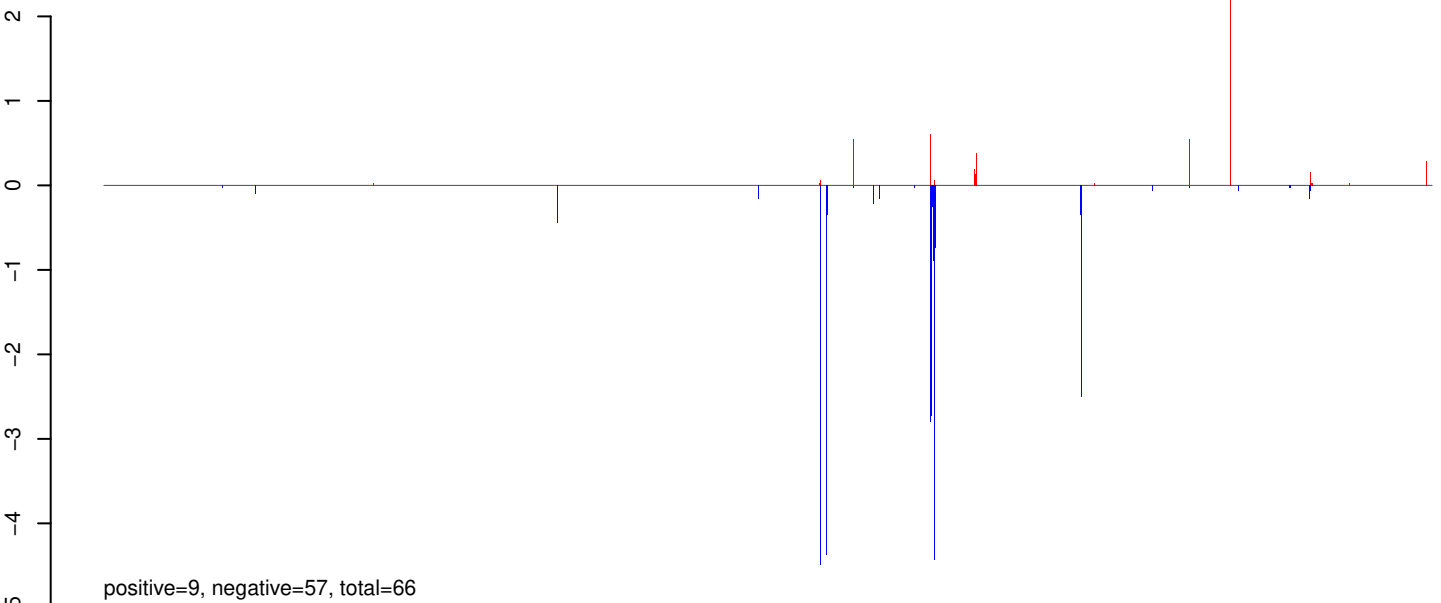


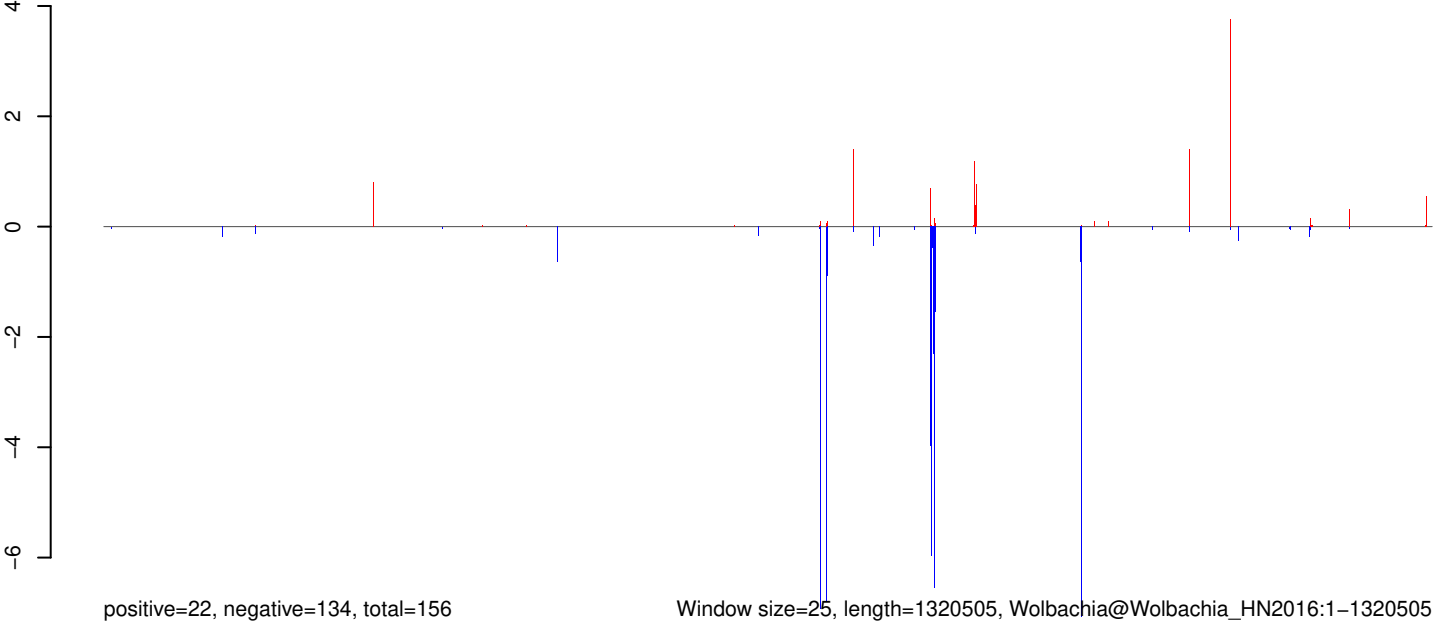
**AeAeg\_Whole\_ZV\_In\_RNA\_GP.18\_23.rep**



**AeAeg\_Whole\_ZV\_In\_RNA\_GP.24\_35.rep**

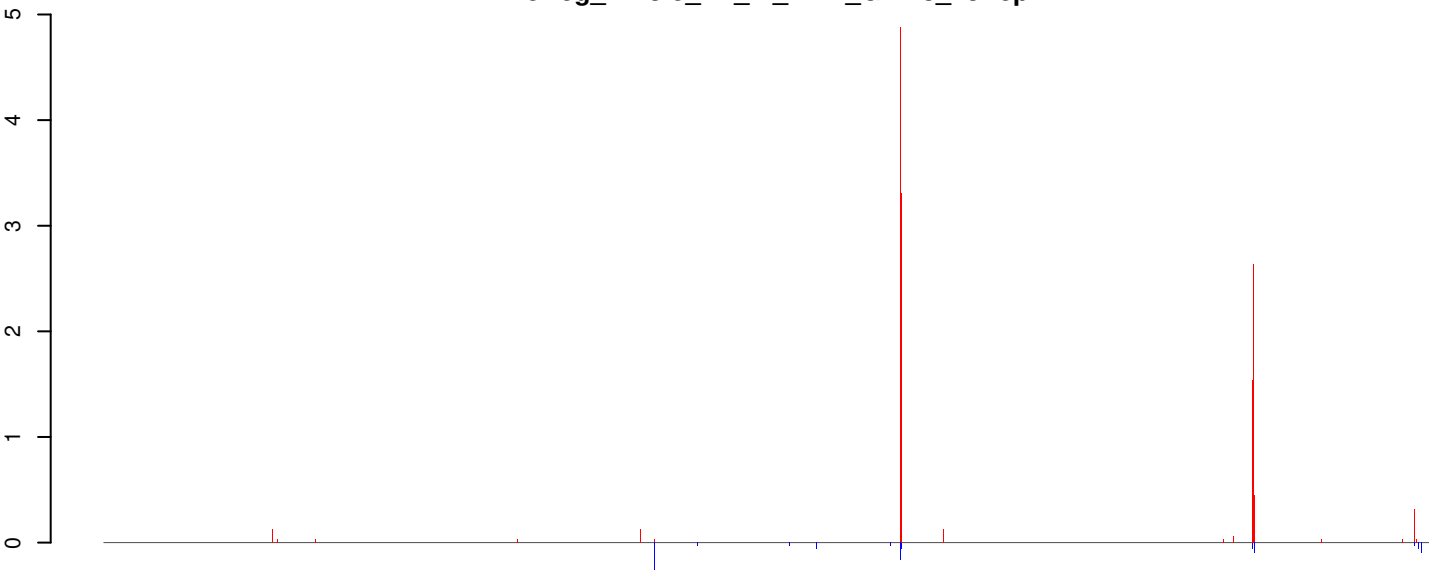


**AeAeg\_Whole\_ZV\_In\_RNA\_GP.rep**



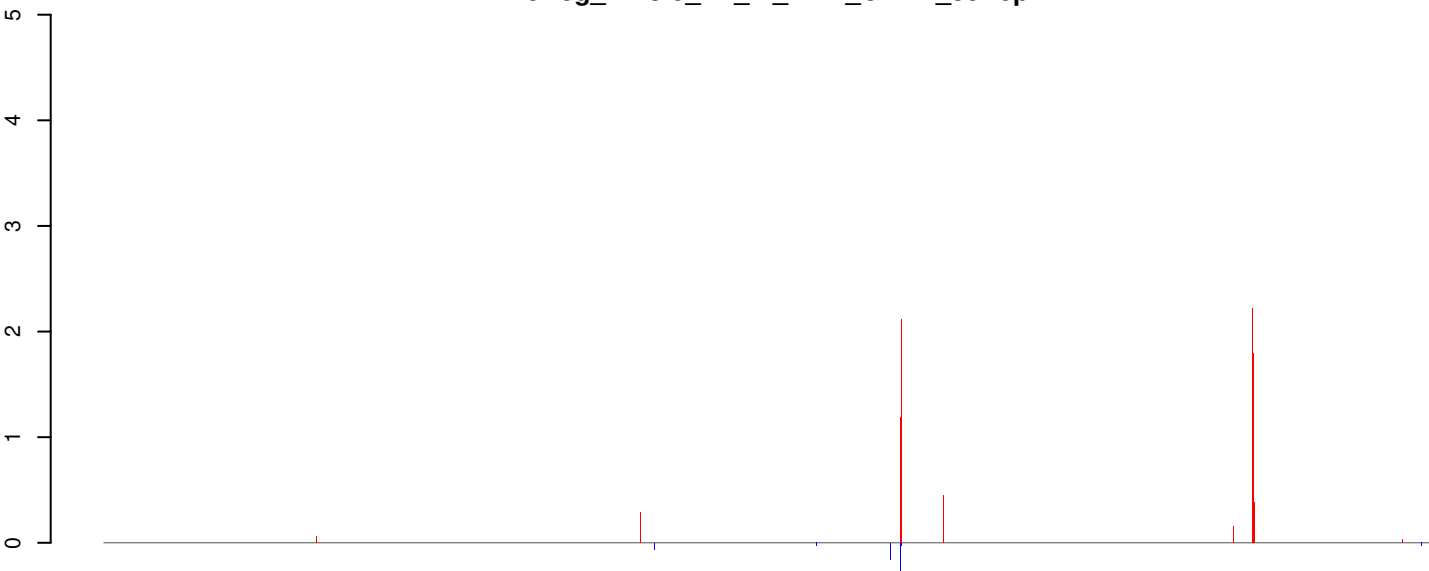
0 200000 400000 600000 800000 1000000 1200000

**AeAeg\_Whole\_ZV\_In\_RNA\_GP.18\_23.rep**



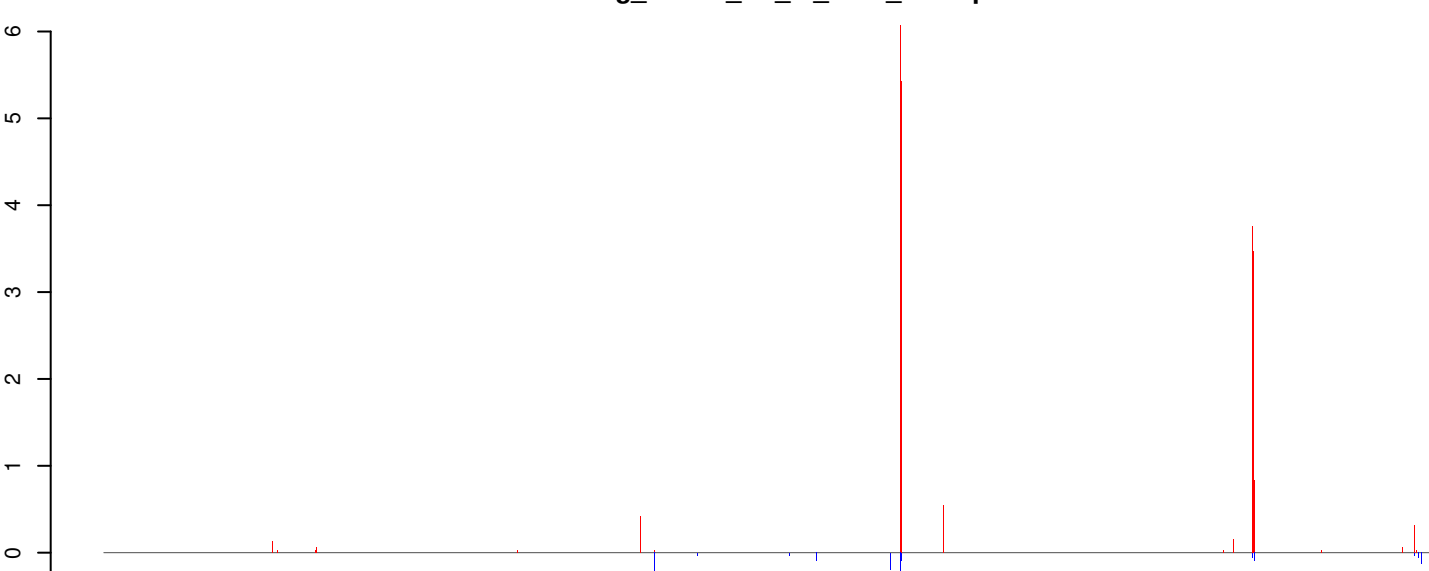
positive=25, negative=1, total=27

**AeAeg\_Whole\_ZV\_In\_RNA\_GP.24\_35.rep**



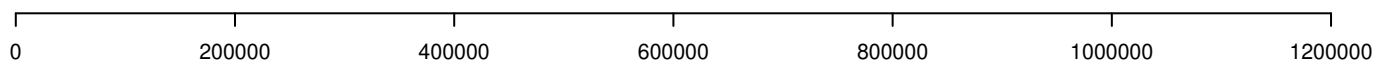
positive=15, negative=1, total=16

**AeAeg\_Whole\_ZV\_In\_RNA\_GP.rep**

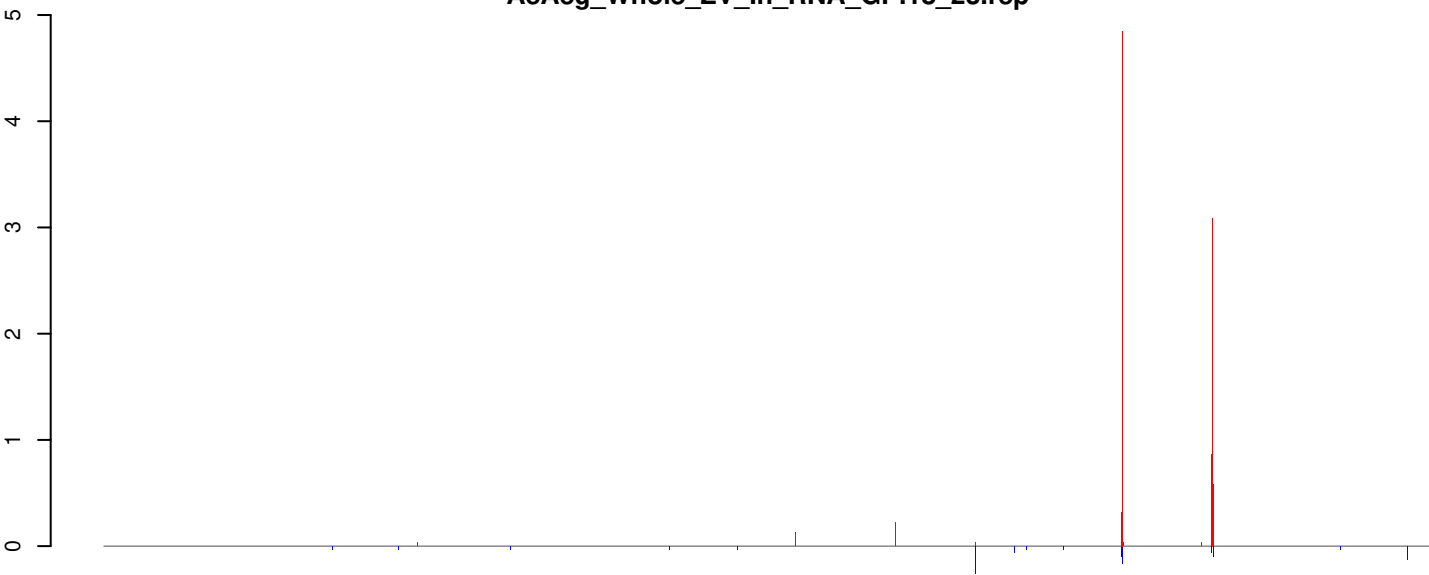


positive=40, negative=3, total=43

Window size=25, length=1211929, Wolbachia@Wolbachia\_wVitA:1-1211929

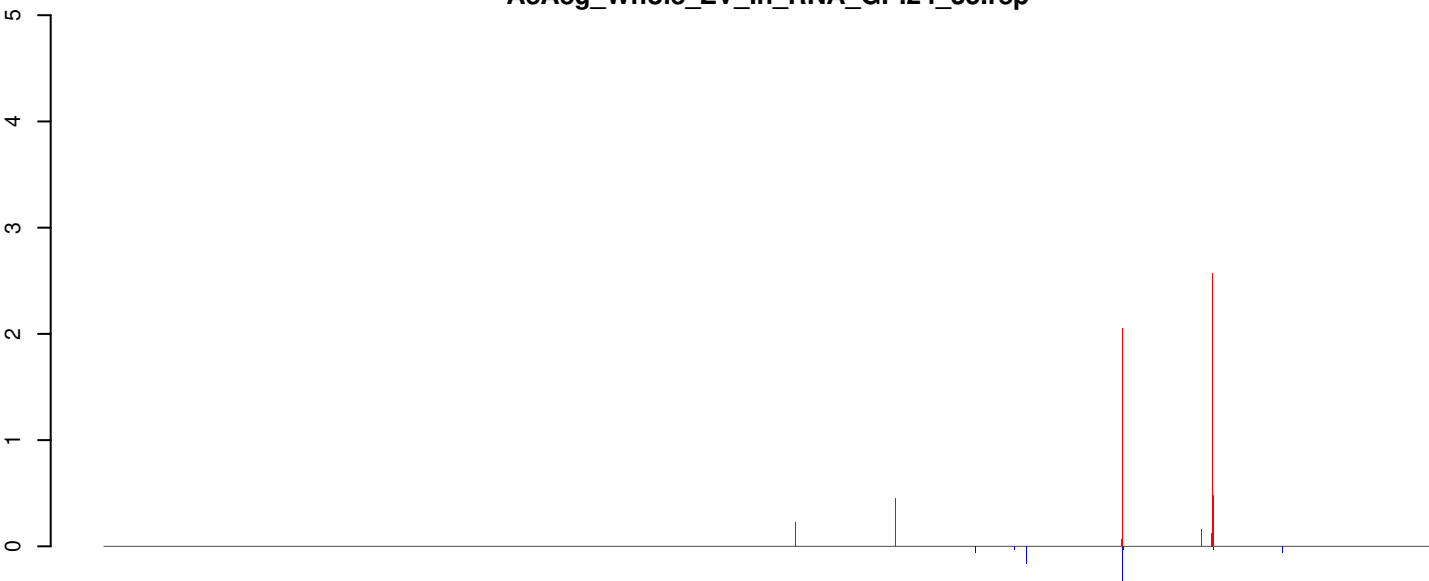


**AeAeg\_Whole\_ZV\_In\_RNA\_GP.18\_23.rep**



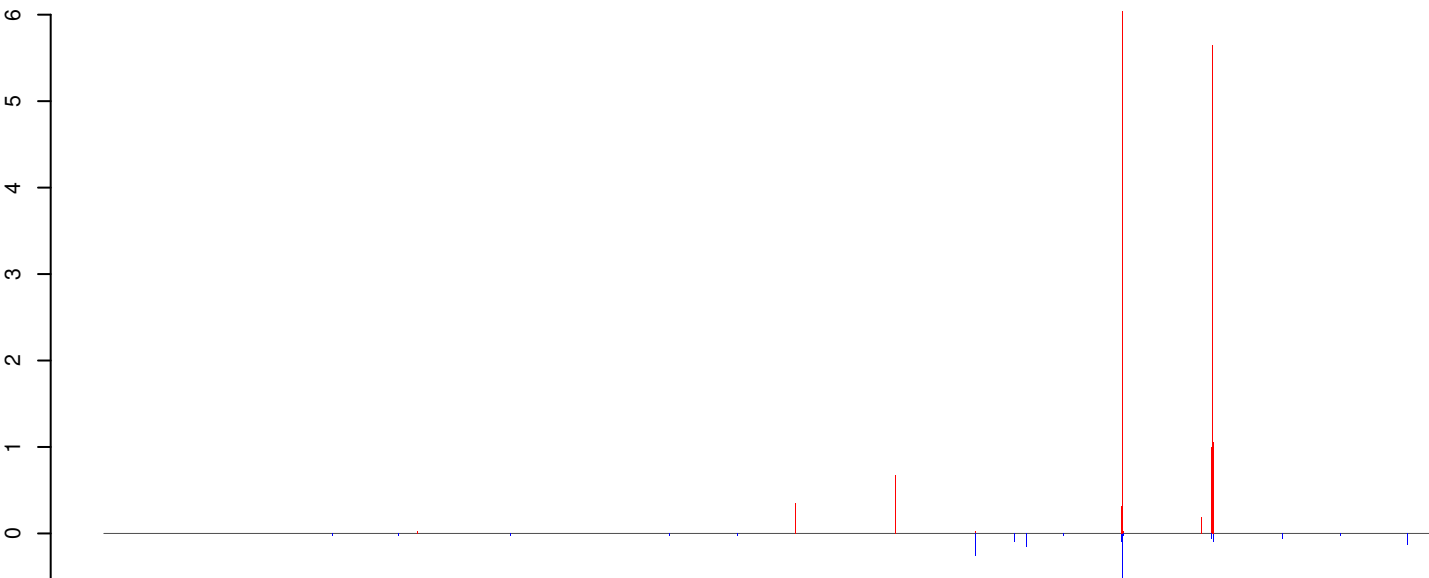
positive=24, negative=1, total=26

**AeAeg\_Whole\_ZV\_In\_RNA\_GP.24\_35.rep**



positive=15, negative=1, total=16

**AeAeg\_Whole\_ZV\_In\_RNA\_GP.rep**

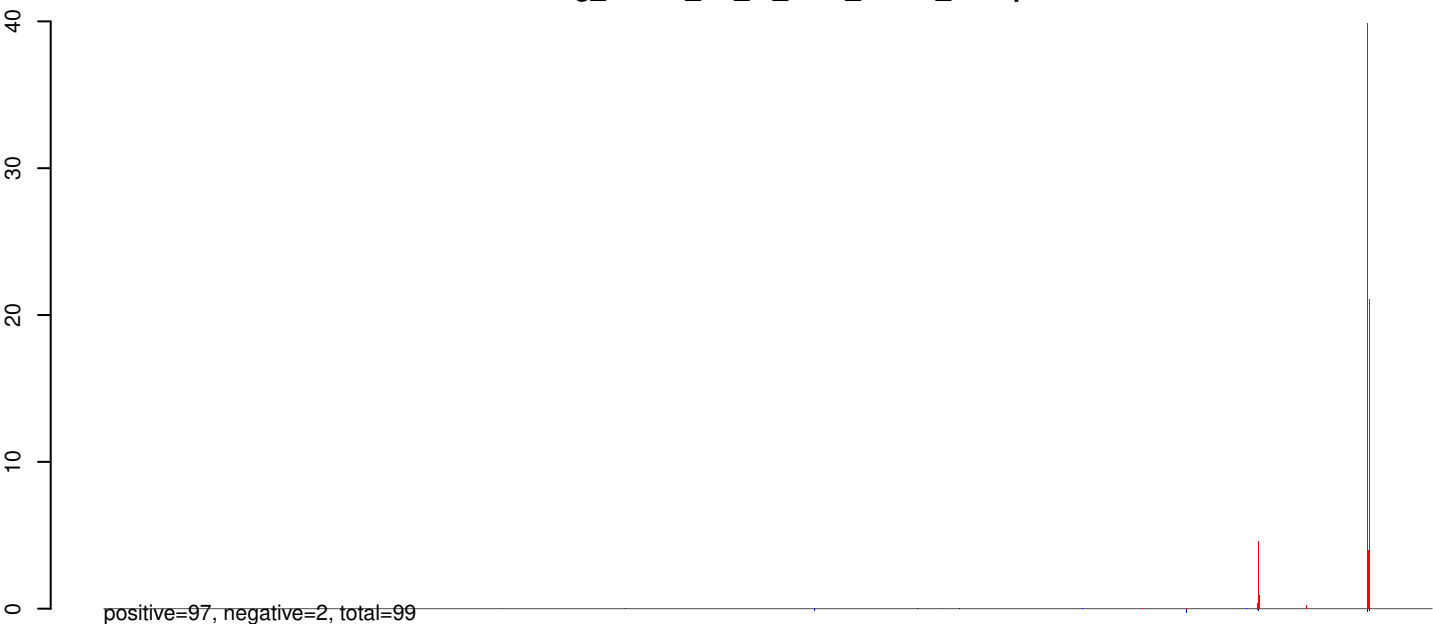


positive=39, negative=3, total=42

Window size=25, length=1482455, Wolbachia@Wolbachia\_wPip:1-1482455

0 500000 1000000 1500000

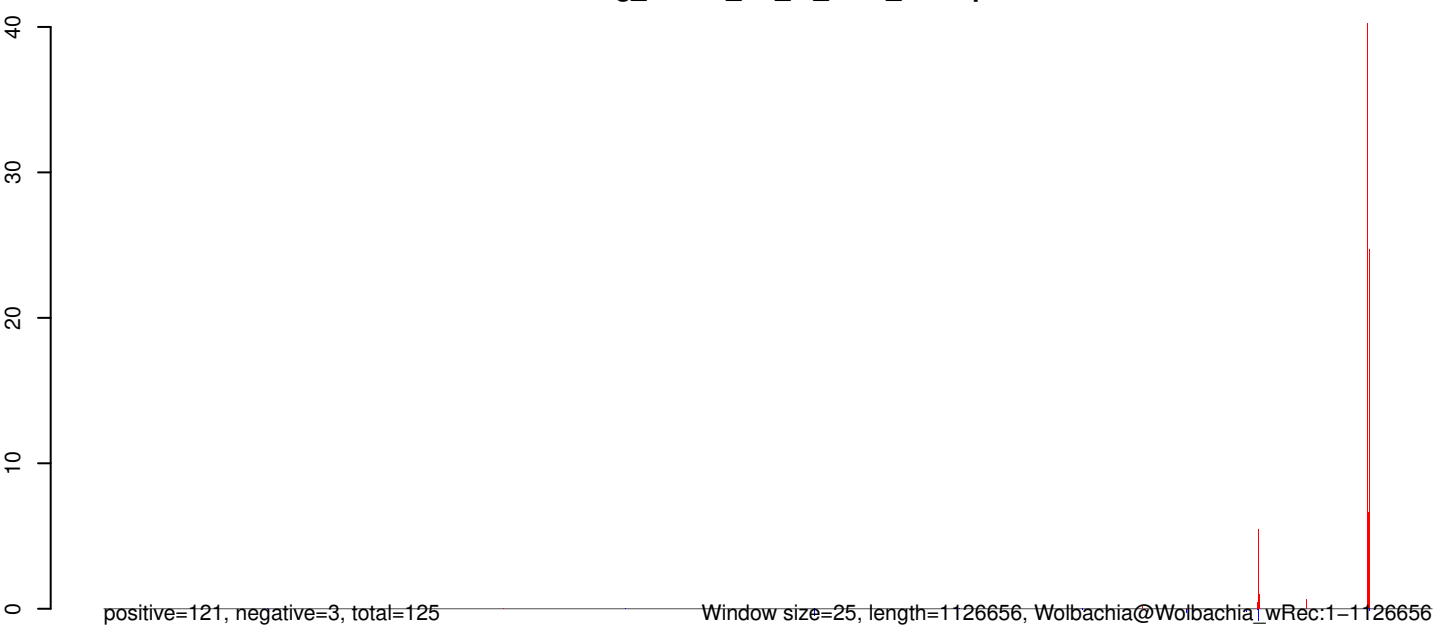
**AeAeg\_Whole\_ZV\_In\_RNA\_GP.18\_23.rep**



**AeAeg\_Whole\_ZV\_In\_RNA\_GP.24\_35.rep**

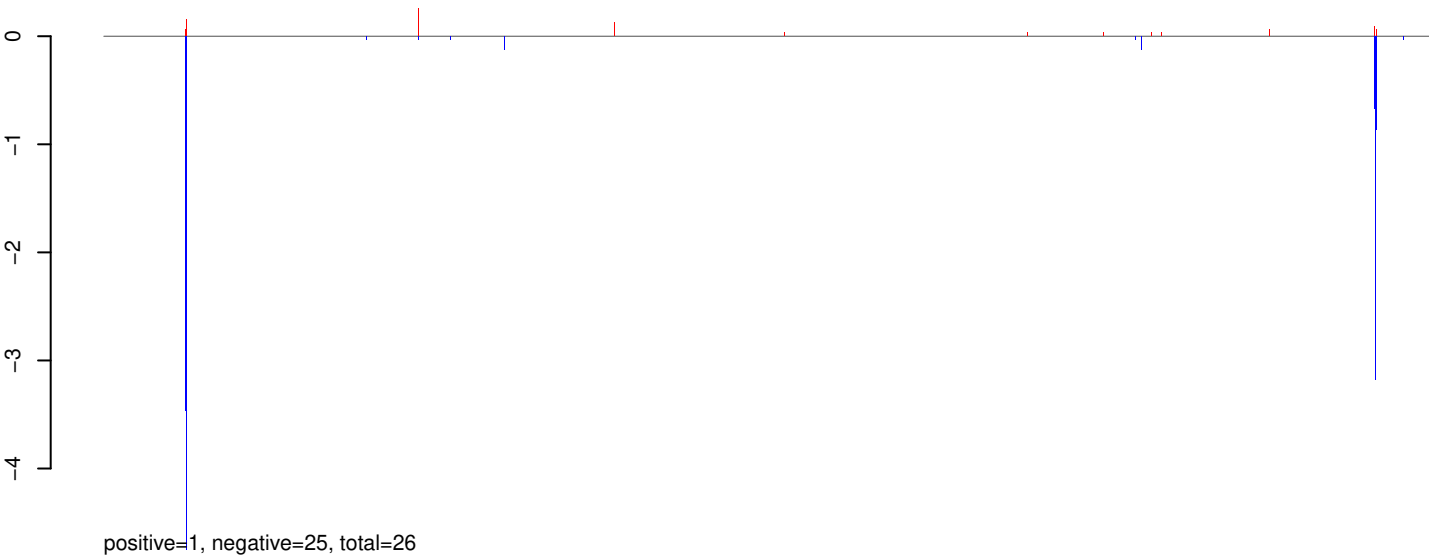


**AeAeg\_Whole\_ZV\_In\_RNA\_GP.rep**

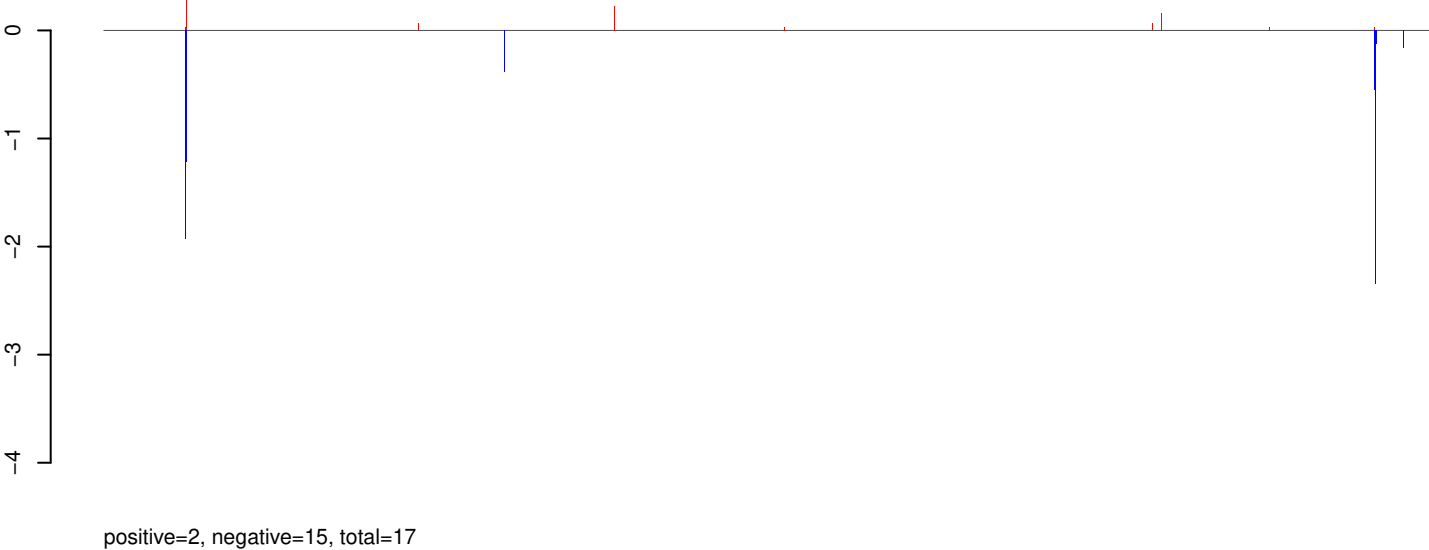


0e+00 2e+05 4e+05 6e+05 8e+05 1e+06

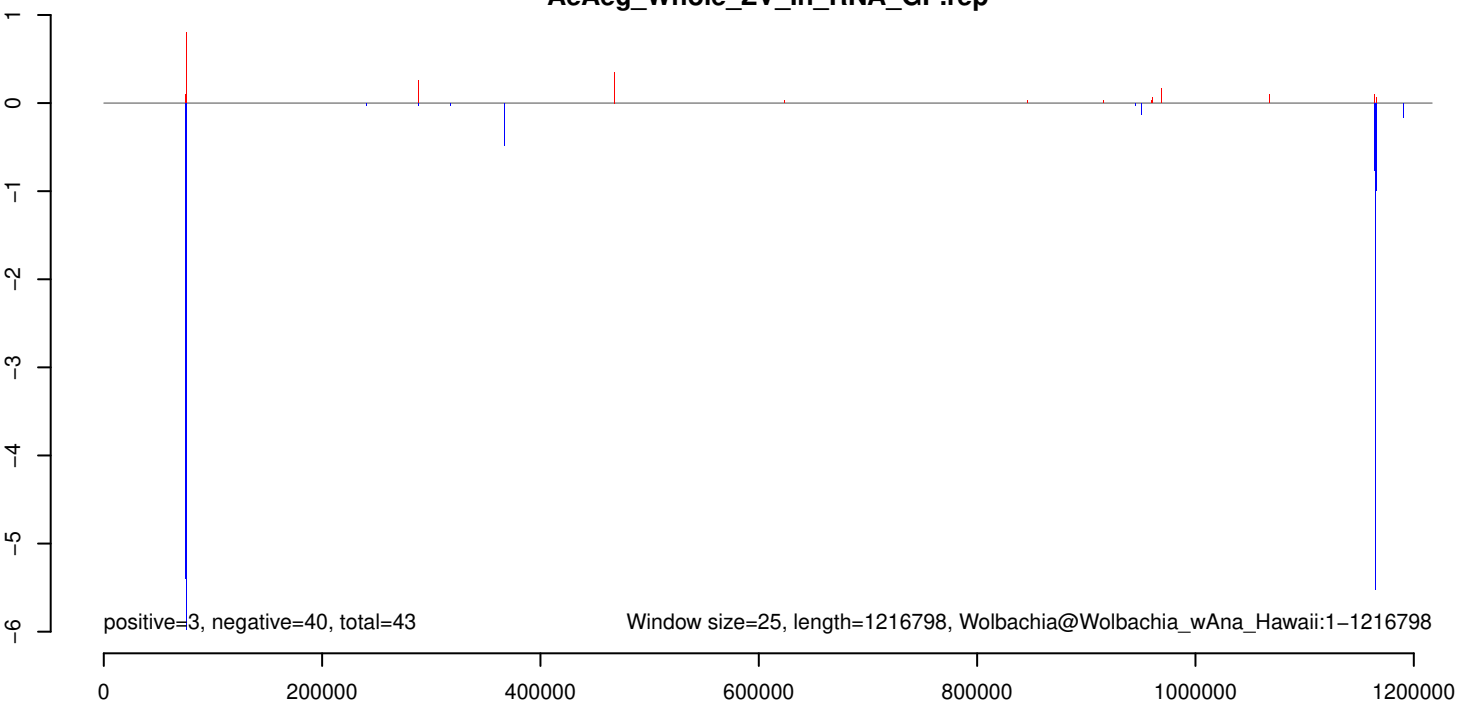
### AeAeg\_Whole\_ZV\_In\_RNA\_GP.18\_23.rep



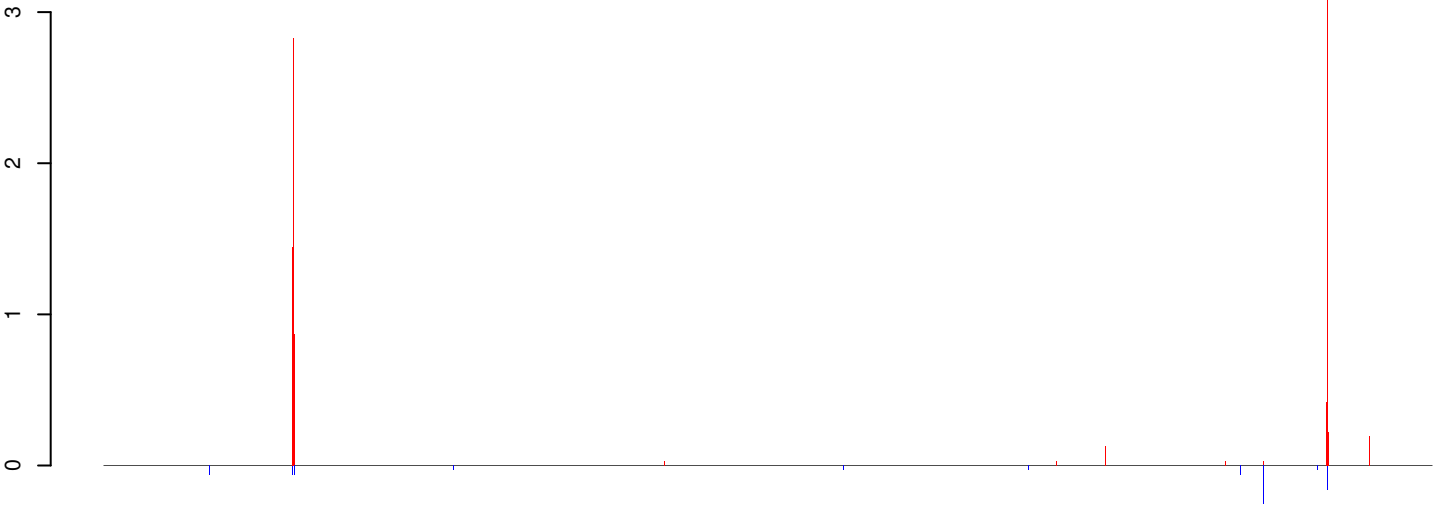
### AeAeg\_Whole\_ZV\_In\_RNA\_GP.24\_35.rep



### AeAeg\_Whole\_ZV\_In\_RNA\_GP.rep

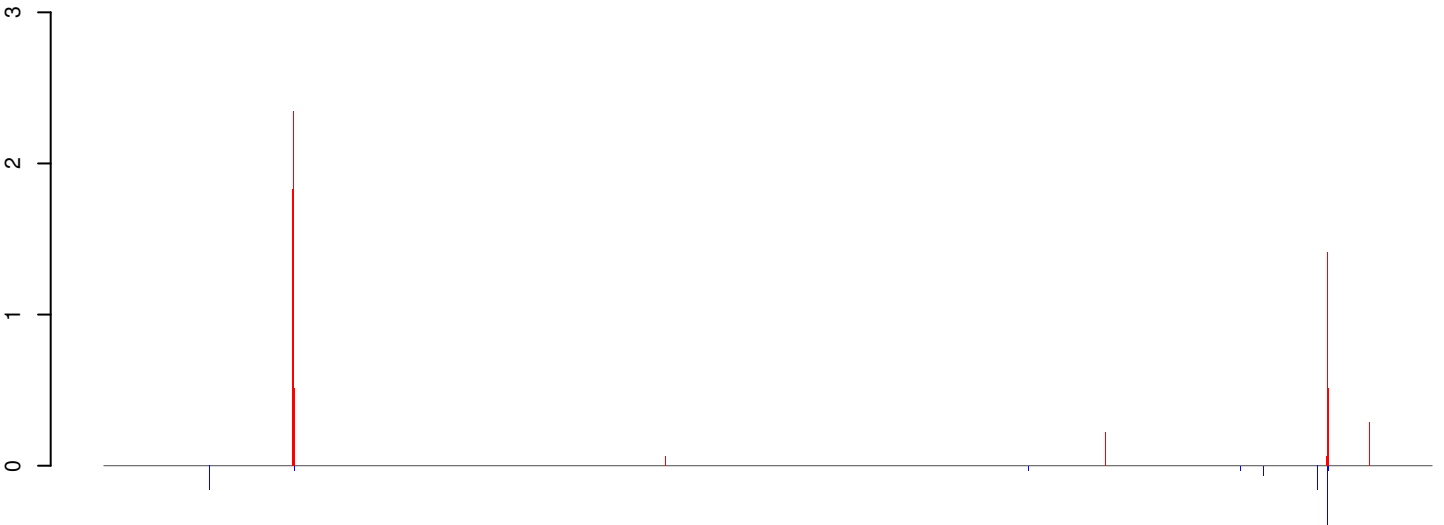


**AeAeg\_Whole\_ZV\_In\_RNA\_GP.18\_23.rep**



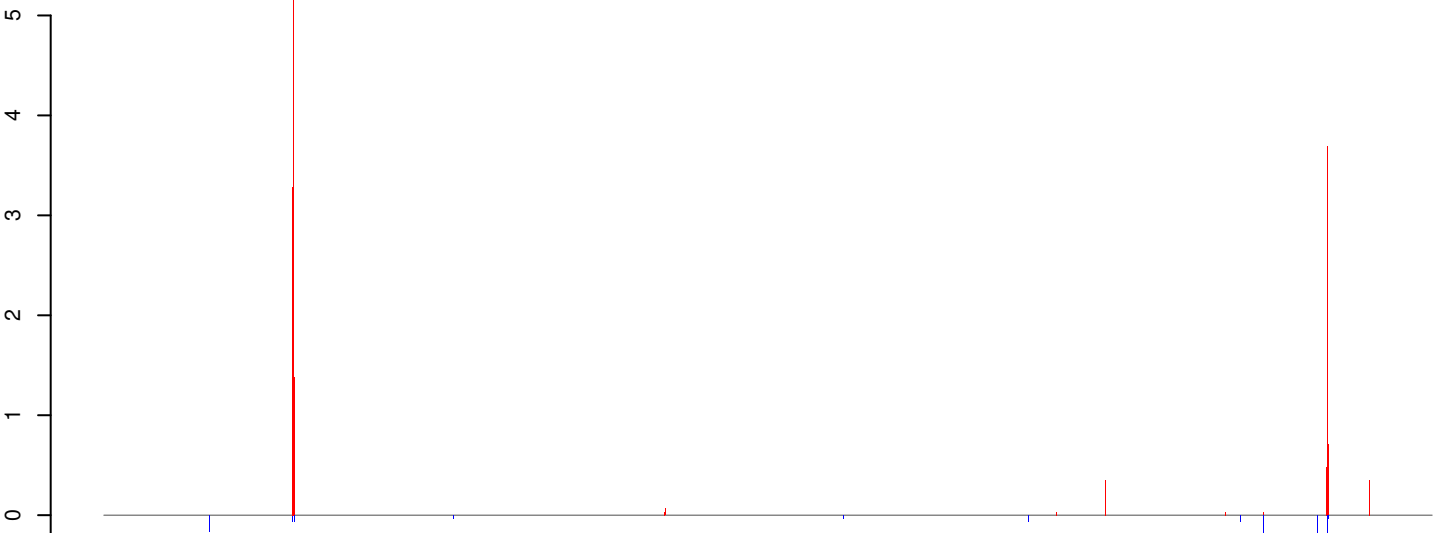
positive=25, negative=1, total=26

**AeAeg\_Whole\_ZV\_In\_RNA\_GP.24\_35.rep**



positive=15, negative=1, total=17

**AeAeg\_Whole\_ZV\_In\_RNA\_GP.rep**

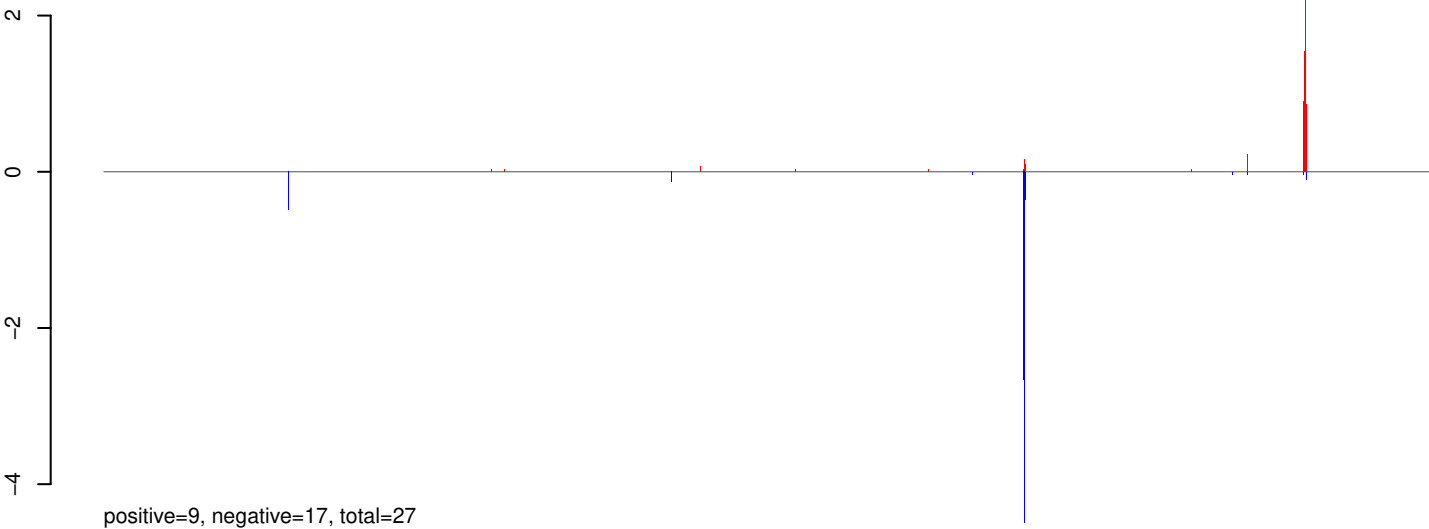


positive=40, negative=3, total=42

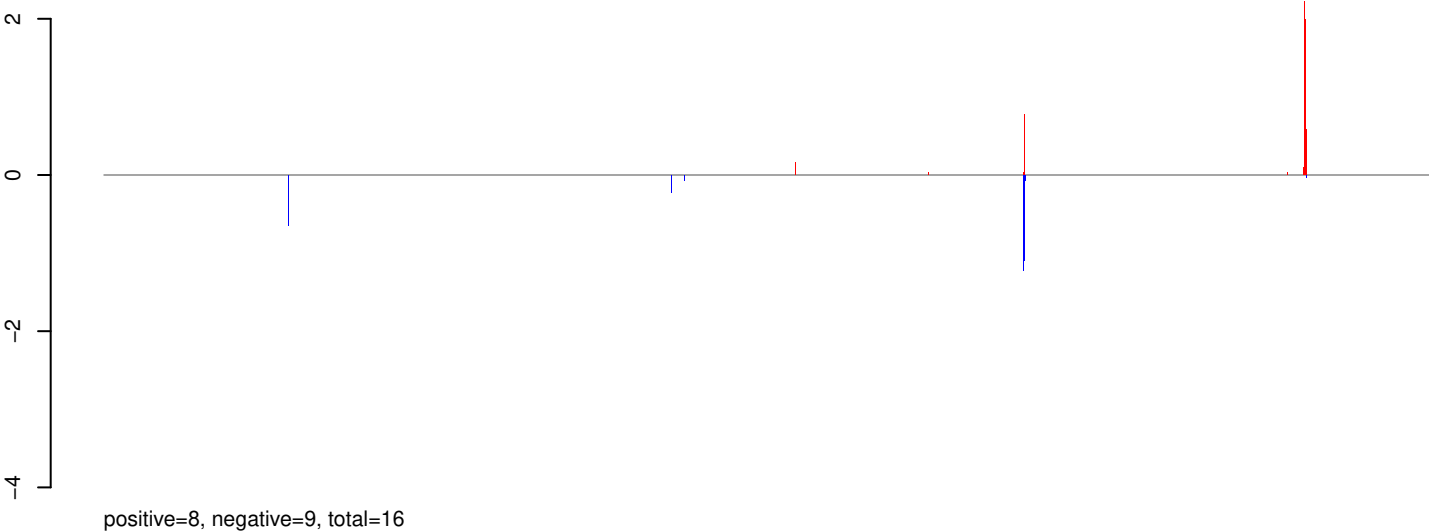
Window size=25, length=1268461, Wolbachia@Wolbachia\_wSim\_wAu:1-1268461

0 200000 400000 600000 800000 1000000 1200000

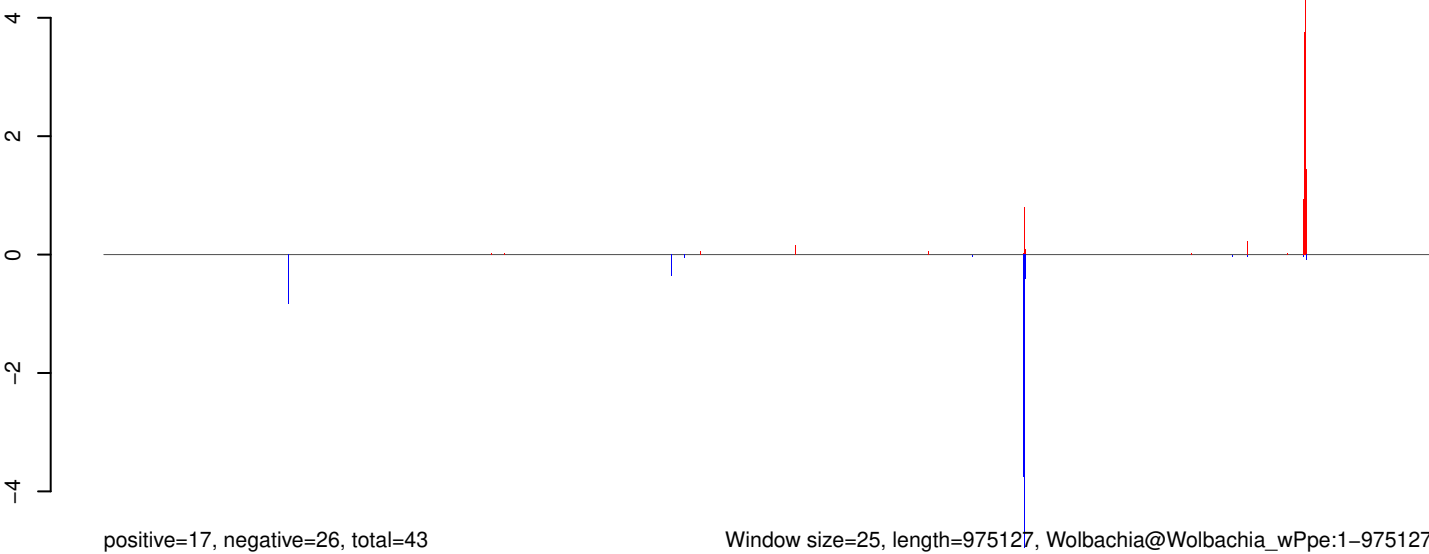
### AeAeg\_Whole\_ZV\_In\_RNA\_GP.18\_23.rep



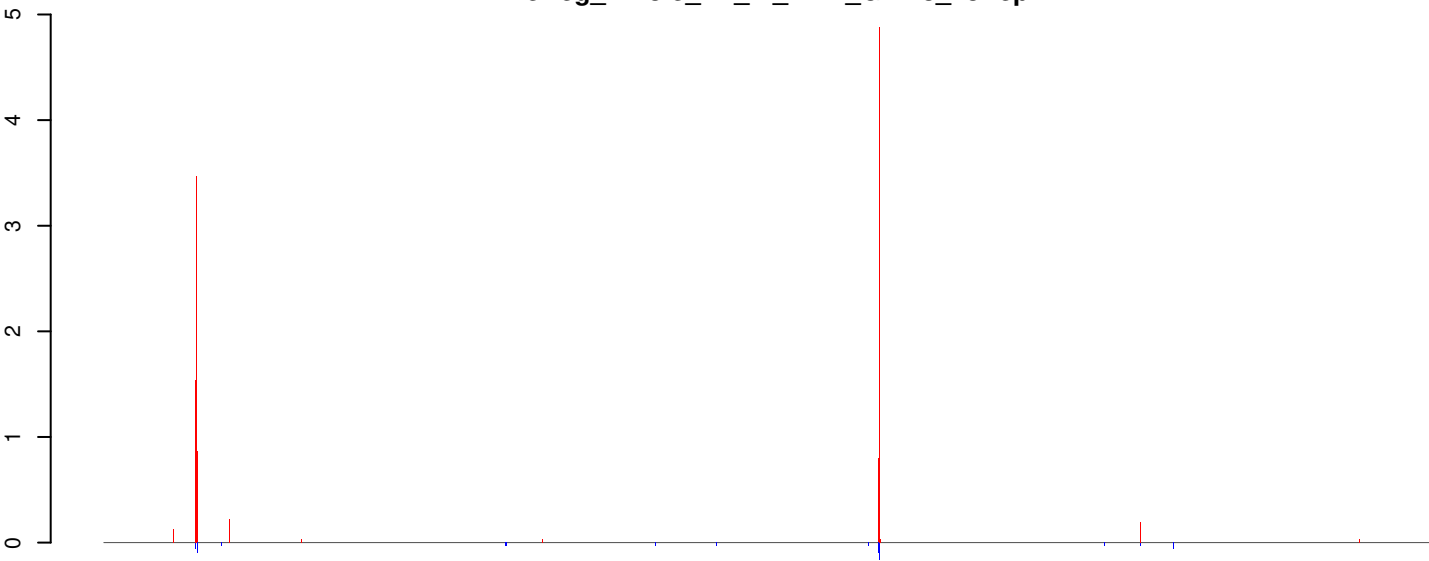
### AeAeg\_Whole\_ZV\_In\_RNA\_GP.24\_35.rep



### AeAeg\_Whole\_ZV\_In\_RNA\_GP.rep

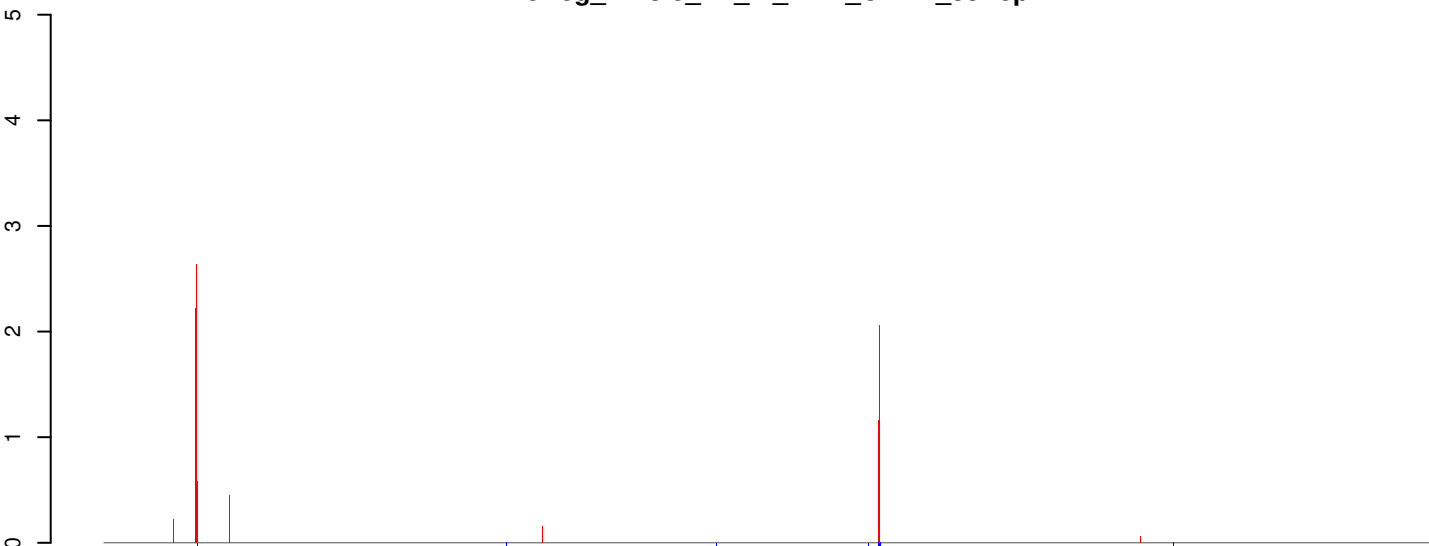


**AeAeg\_Whole\_ZV\_In\_RNA\_GP.18\_23.rep**



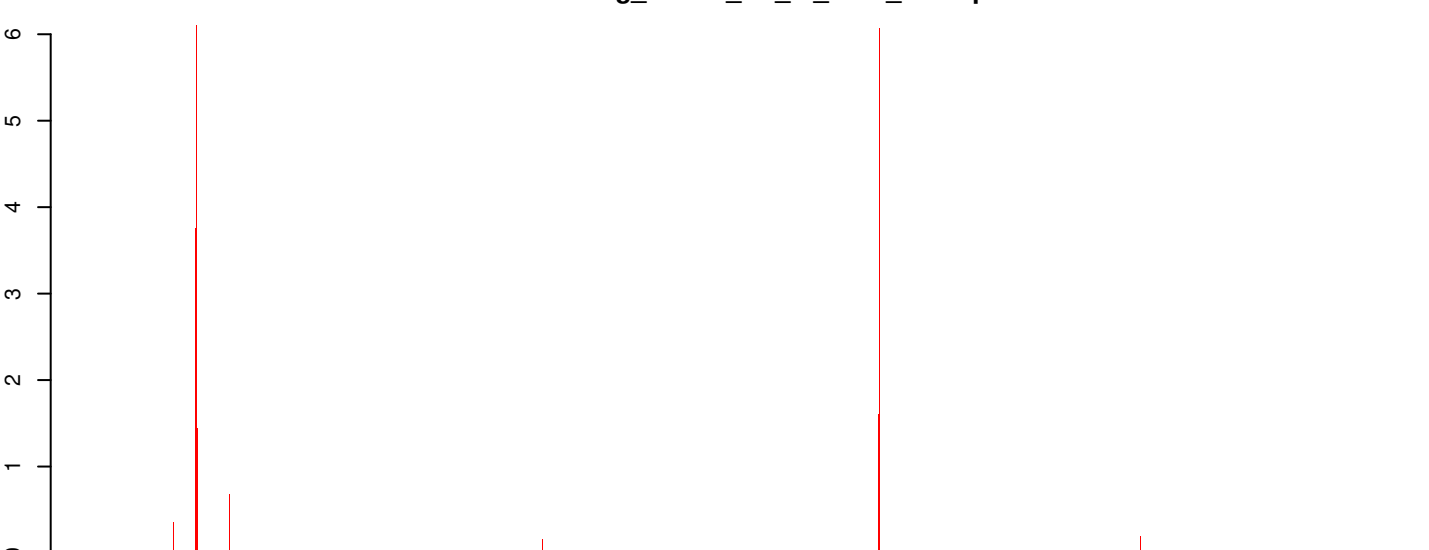
positive=25, negative=1, total=26

**AeAeg\_Whole\_ZV\_In\_RNA\_GP.24\_35.rep**



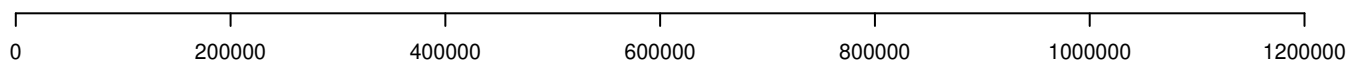
positive=15, negative=1, total=17

**AeAeg\_Whole\_ZV\_In\_RNA\_GP.rep**



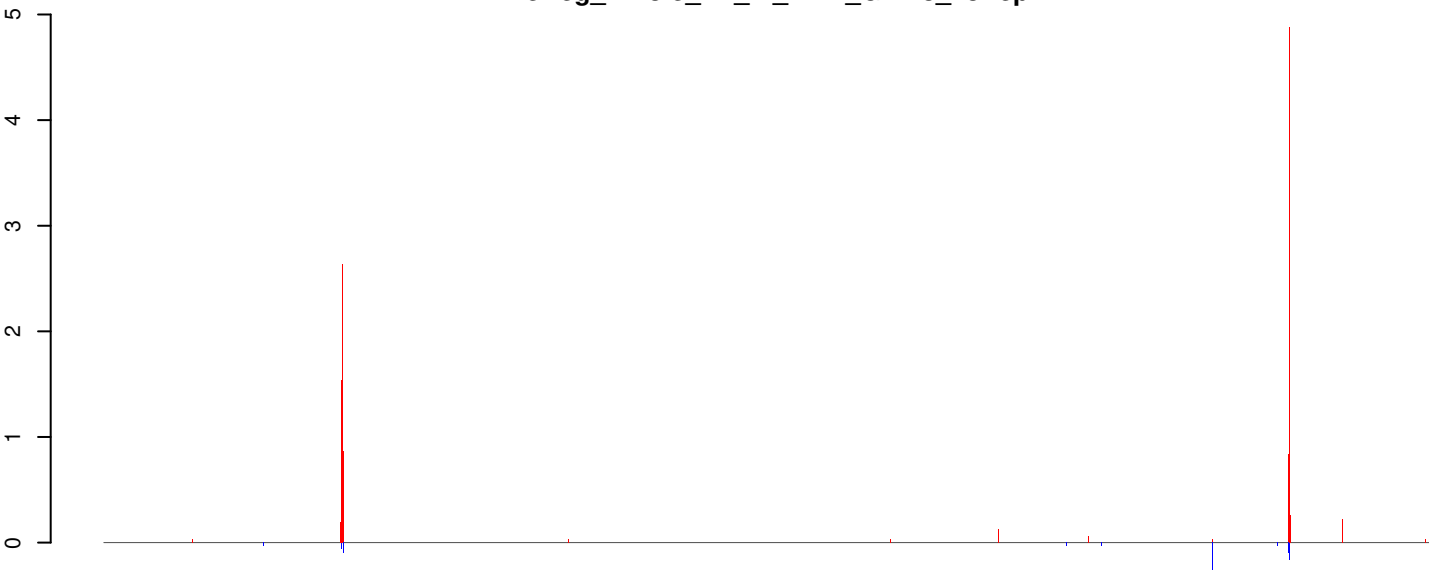
positive=40, negative=2, total=43

Window size=25, length=1236914, Wolbachia@Wolbachia\_wAna\_India:1-1236914



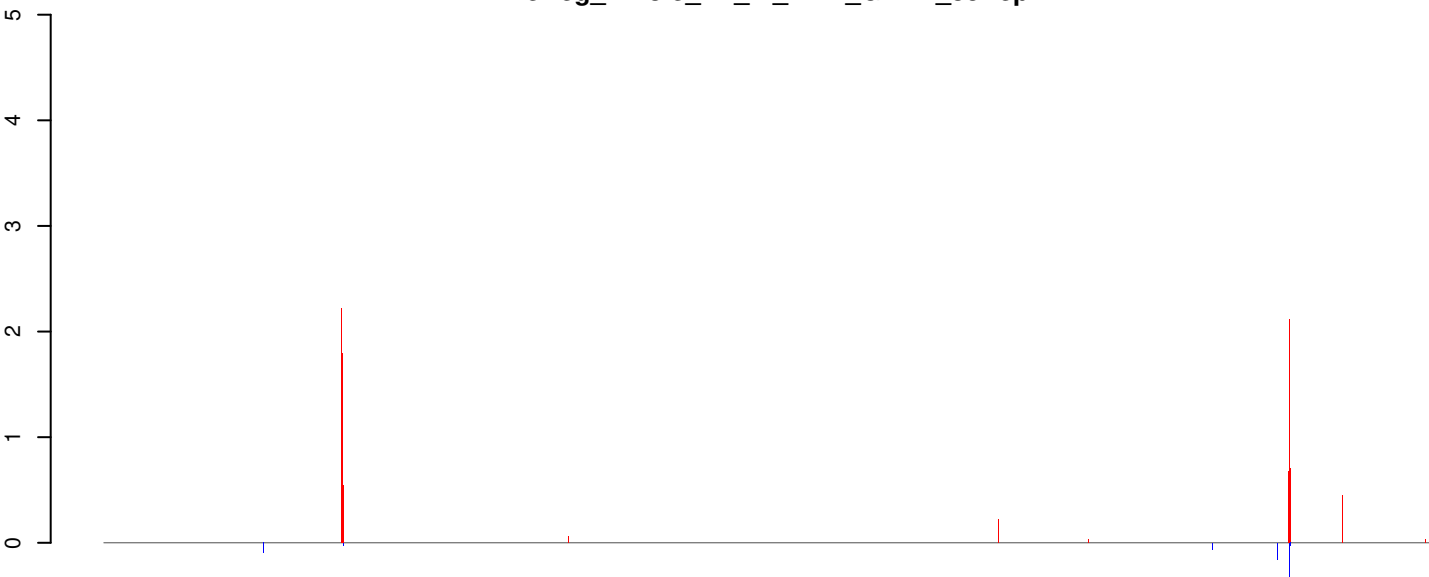


**AeAeg\_Whole\_ZV\_In\_RNA\_GP.18\_23.rep**



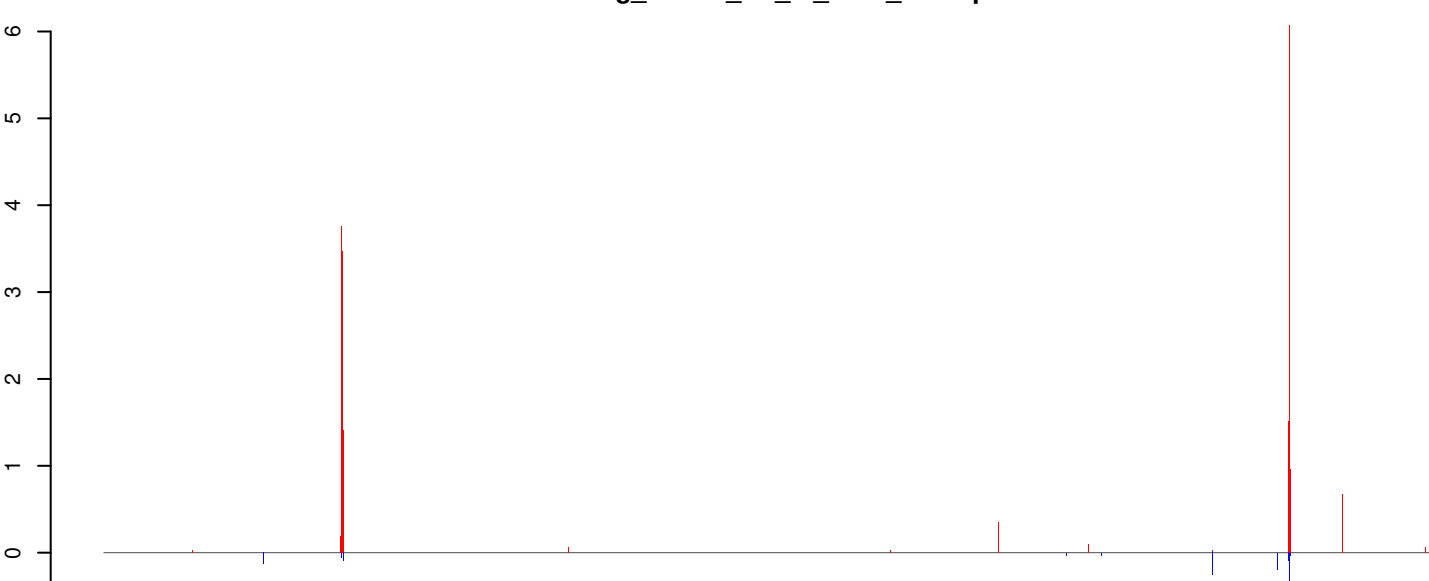
positive=25, negative=1, total=26

**AeAeg\_Whole\_ZV\_In\_RNA\_GP.24\_35.rep**



positive=15, negative=1, total=17

**AeAeg\_Whole\_ZV\_In\_RNA\_GP.rep**

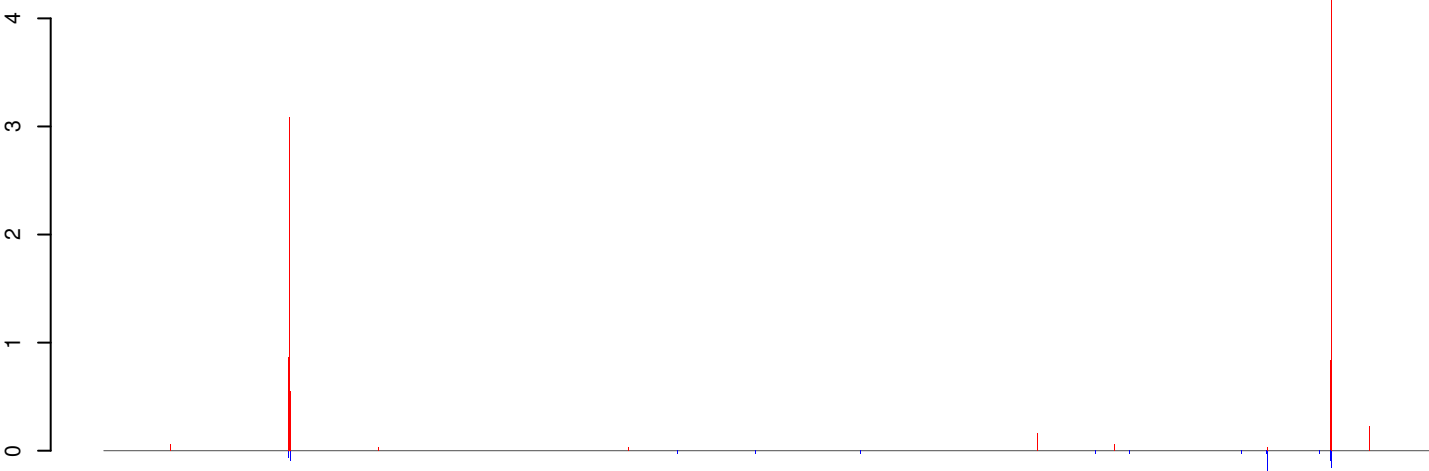


positive=40, negative=2, total=43

Window size=25, length=1049170, Wolbachia@Wolbachia\_wUni:1-1049170

0e+00 2e+05 4e+05 6e+05 8e+05 1e+06

### AeAeg\_Whole\_ZV\_In\_RNA\_GP.18\_23.rep



positive=24, negative=1, total=26

### AeAeg\_Whole\_ZV\_In\_RNA\_GP.24\_35.rep



positive=15, negative=1, total=16

### AeAeg\_Whole\_ZV\_In\_RNA\_GP.rep

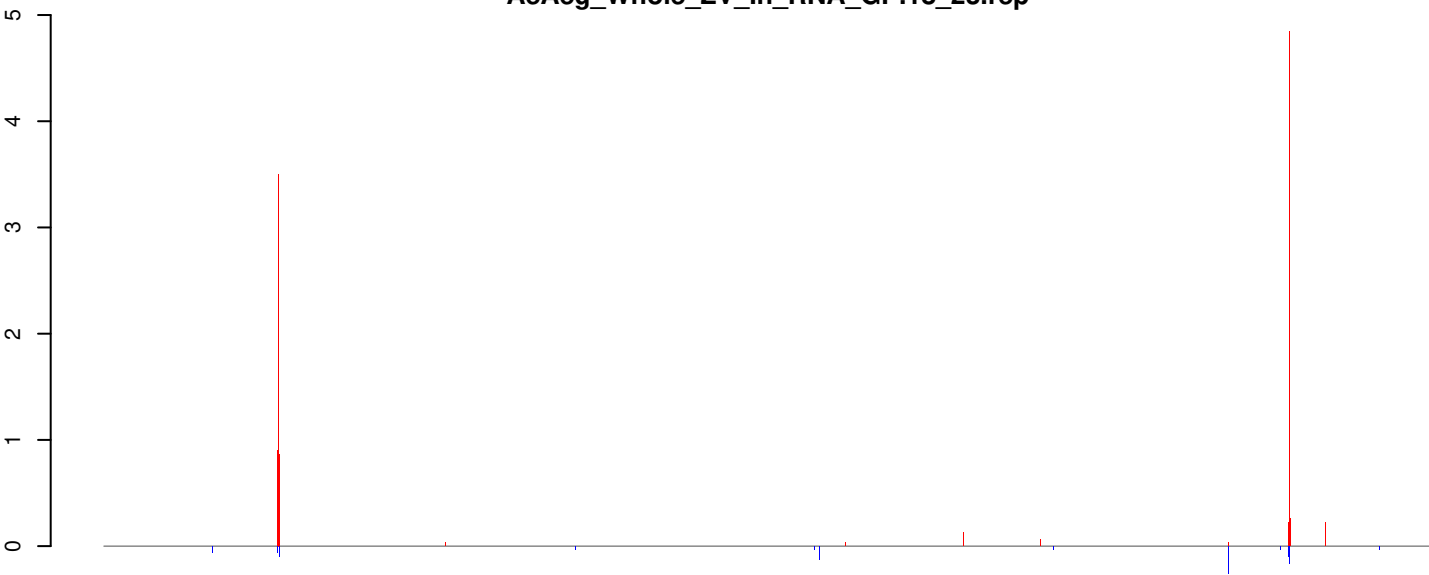


positive=39, negative=2, total=42

Window size=25, length=1295804, Wolbachia@Wolbachia\_wSim\_wHa:1-1295804

0 200000 400000 600000 800000 1000000 1200000

**AeAeg\_Whole\_ZV\_In\_RNA\_GP.18\_23.rep**



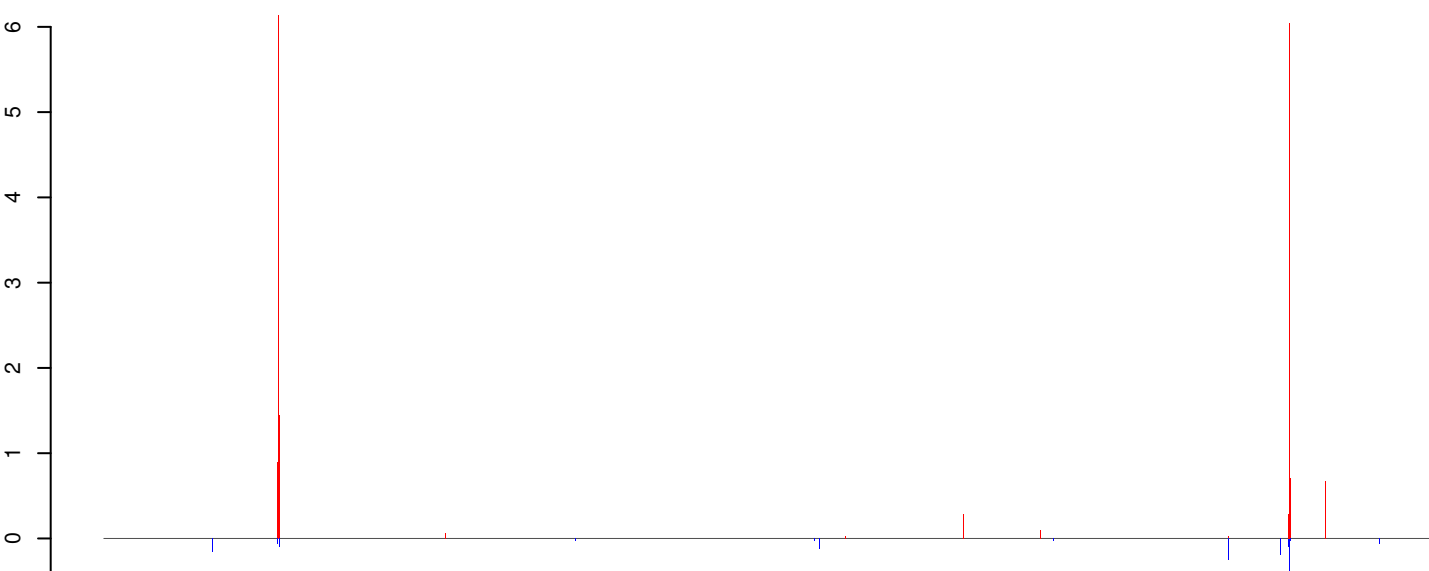
positive=25, negative=1, total=26

**AeAeg\_Whole\_ZV\_In\_RNA\_GP.24\_35.rep**



positive=15, negative=1, total=17

**AeAeg\_Whole\_ZV\_In\_RNA\_GP.rep**

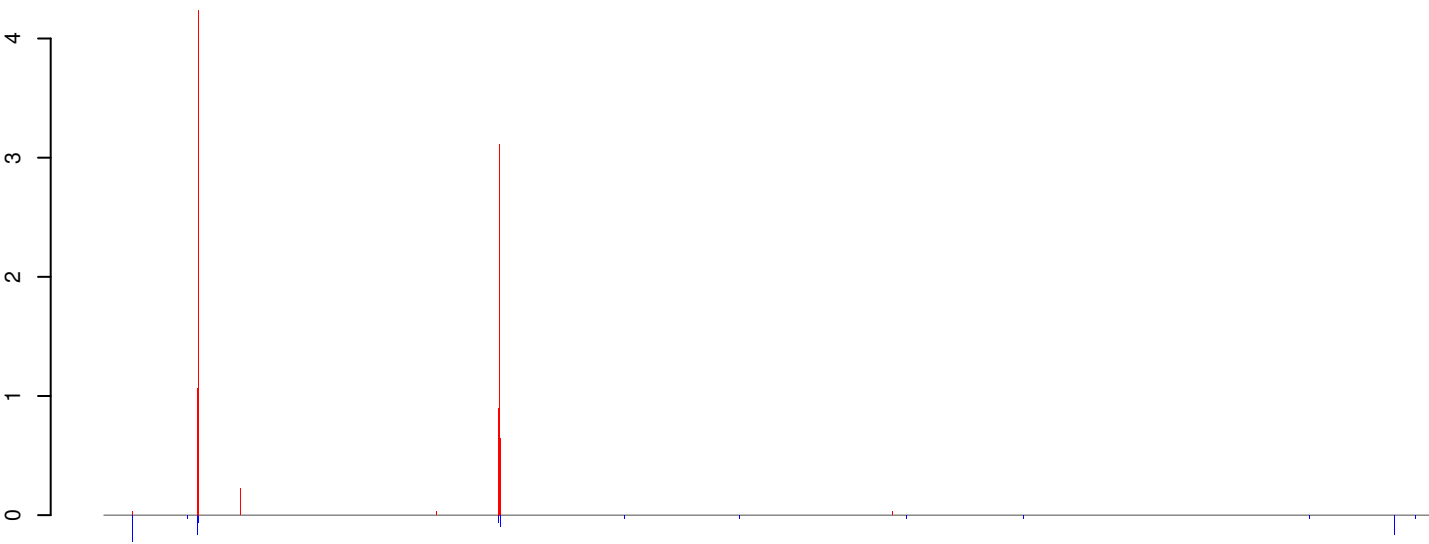


positive=40, negative=3, total=43

Window size=25, length=1445873, Wolbachia@Wolbachia\_wRi:1-1445873

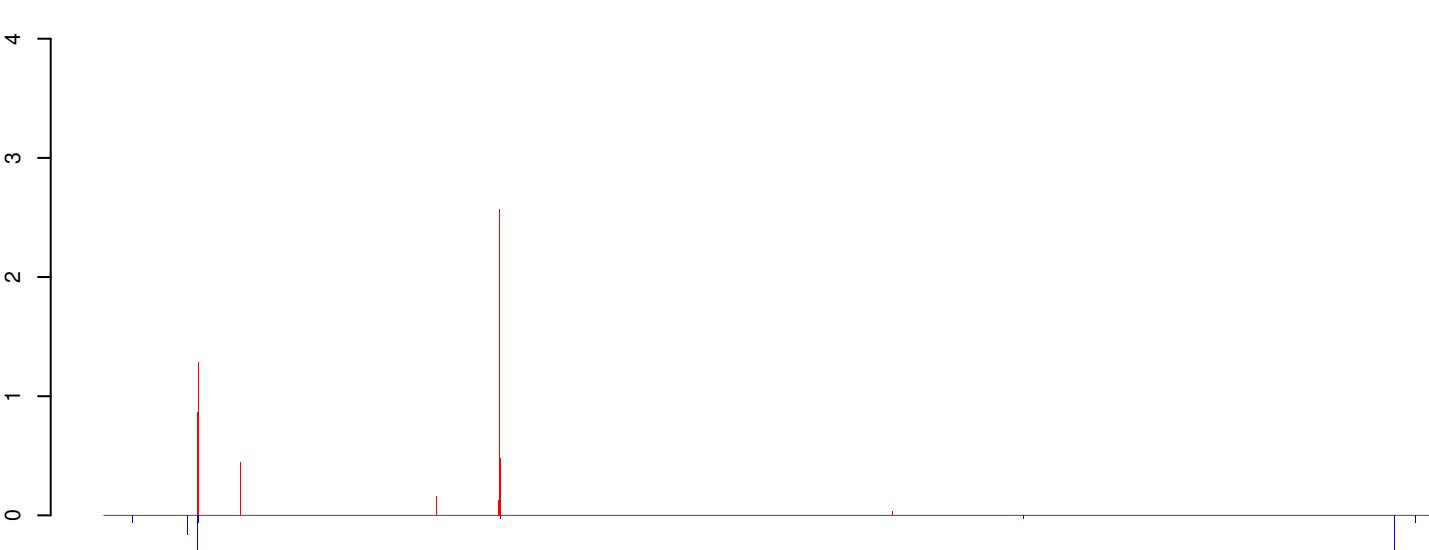
0 500000 1000000 1500000

**AeAeg\_Whole\_ZV\_In\_RNA\_GP.18\_23.rep**



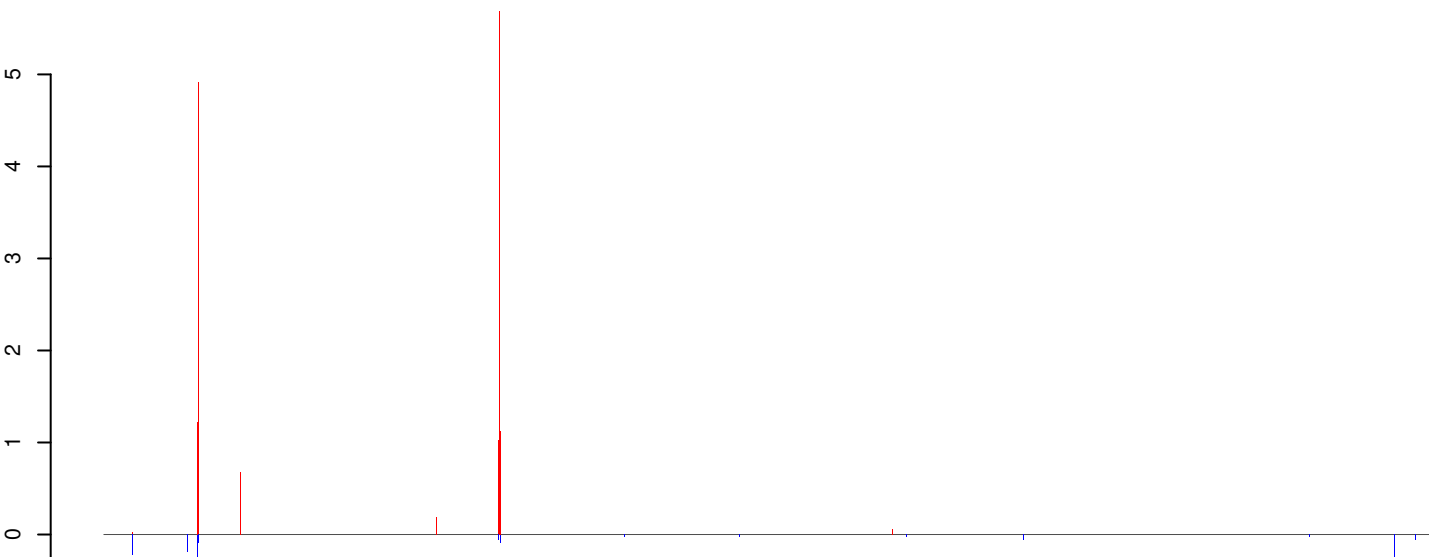
positive=25, negative=1, total=26

**AeAeg\_Whole\_ZV\_In\_RNA\_GP.24\_35.rep**



positive=15, negative=2, total=17

**AeAeg\_Whole\_ZV\_In\_RNA\_GP.rep**

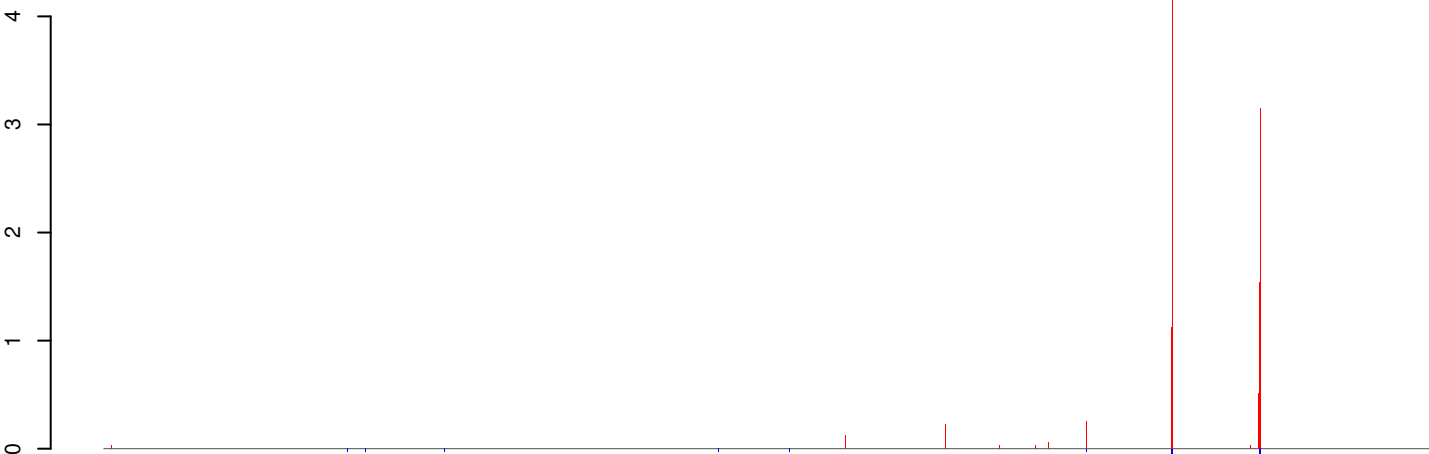


positive=40, negative=3, total=42

Window size=25, length=1239155, Wolbachia@Wolbachia\_wMelPop:1-1239155

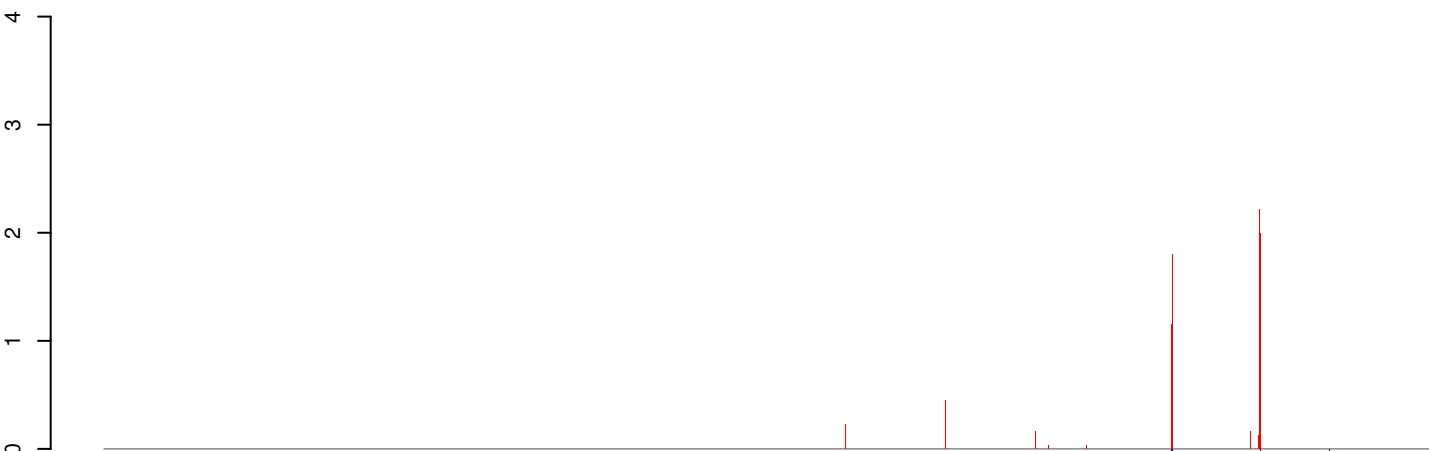
0 200000 400000 600000 800000 1000000 1200000

**AeAeg\_Whole\_ZV\_In\_RNA\_GP.18\_23.rep**



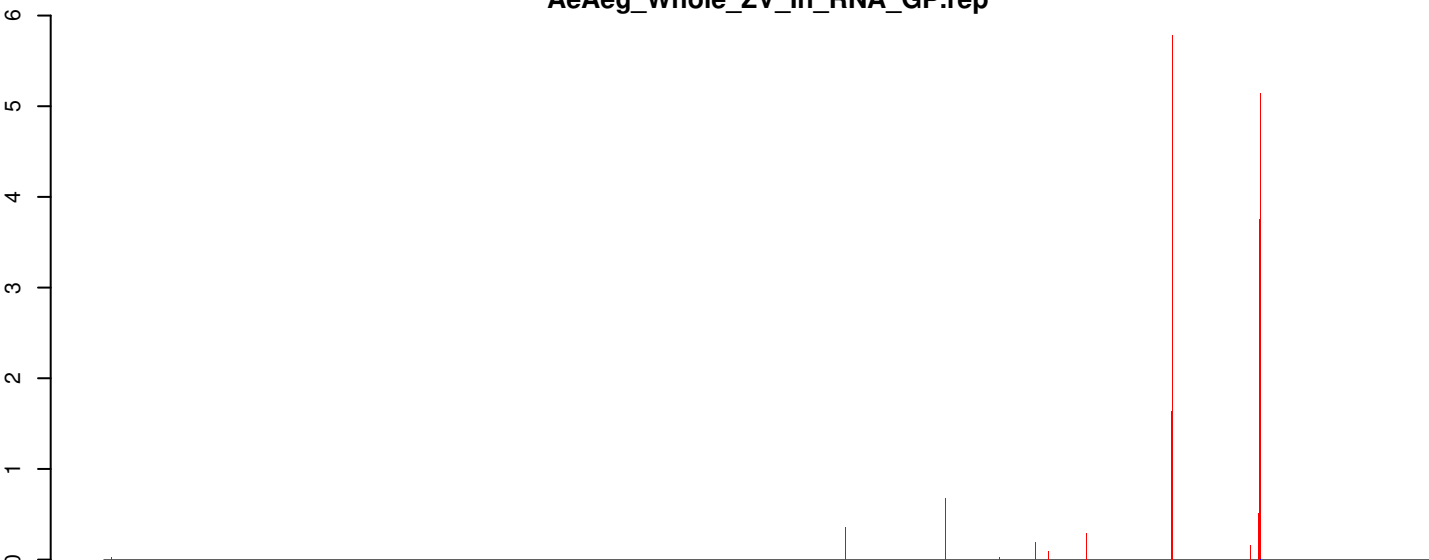
positive=25, negative=1, total=26

**AeAeg\_Whole\_ZV\_In\_RNA\_GP.24\_35.rep**



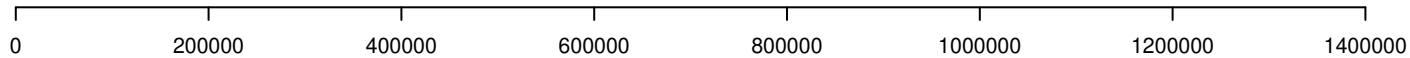
positive=15, negative=1, total=16

**AeAeg\_Whole\_ZV\_In\_RNA\_GP.rep**

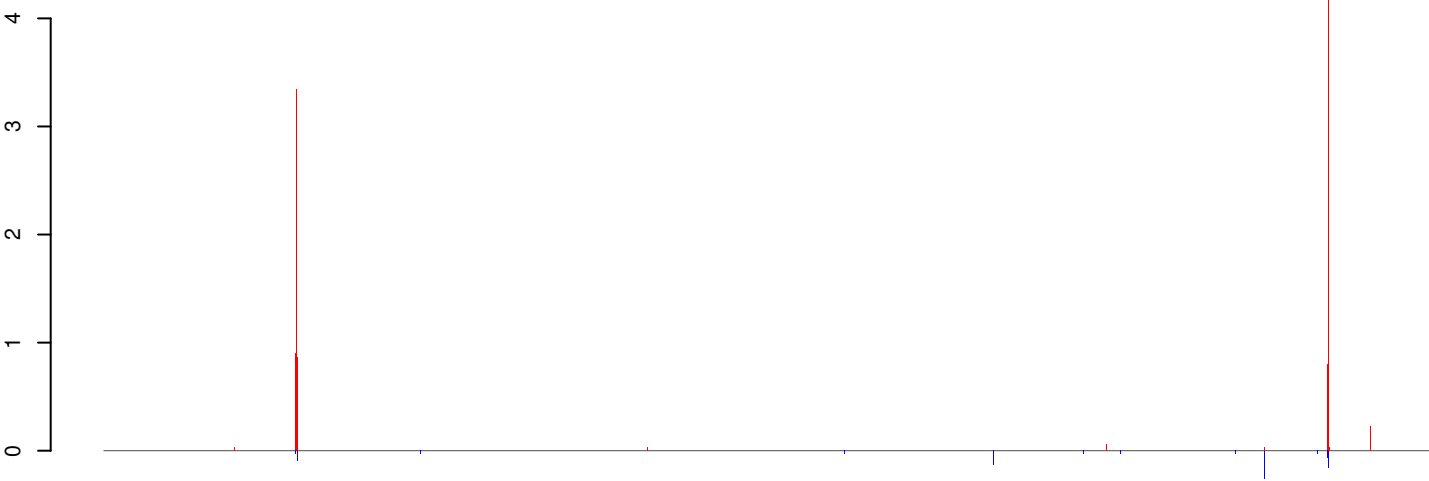


positive=40, negative=2, total=42

Window size=25, length=1377933, Wolbachia@Wolbachia\_wBol1-b:1-1377933

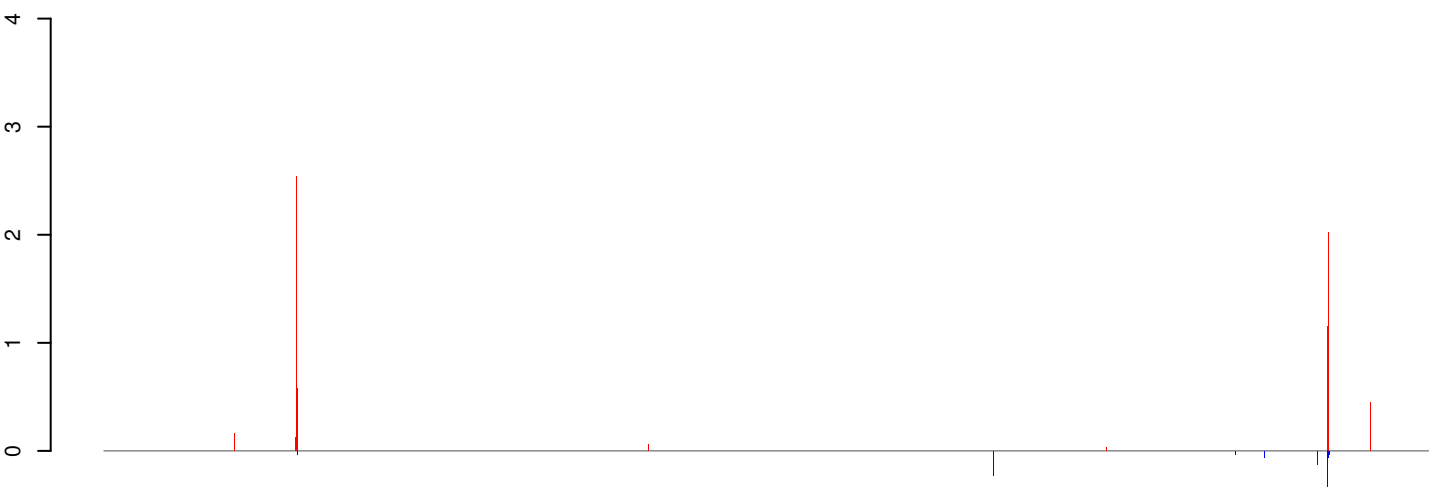


### AeAeg\_Whole\_ZV\_In\_RNA\_GP.18\_23.rep



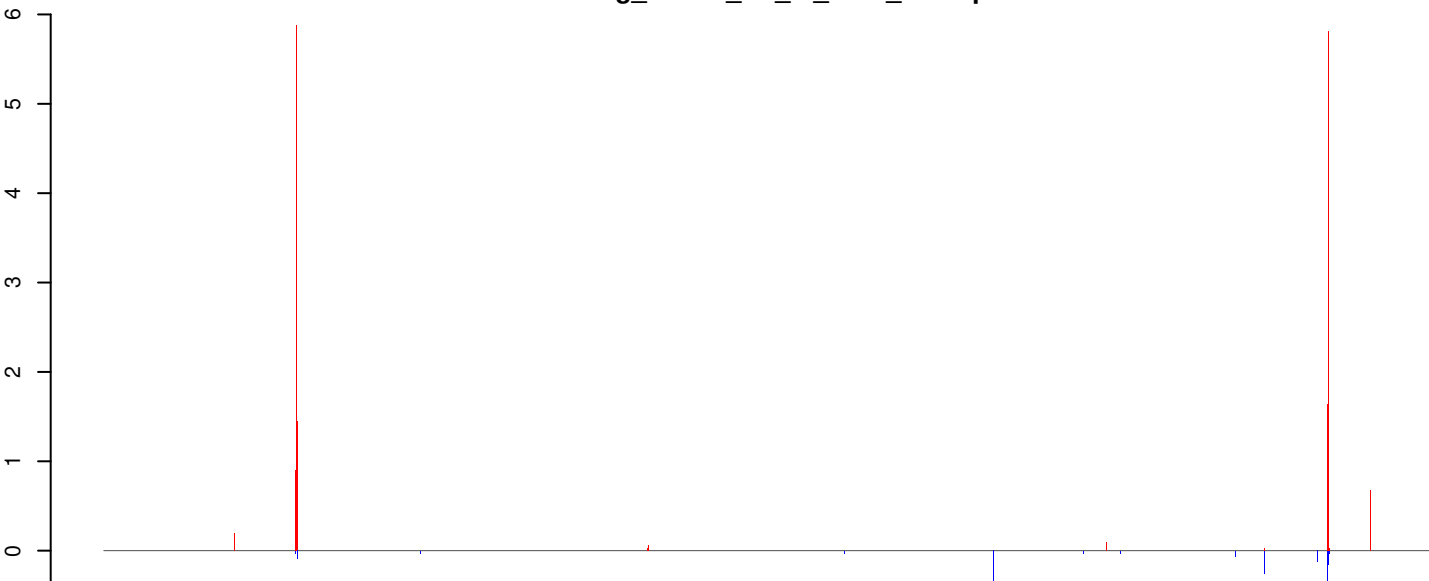
positive=25, negative=1, total=26

### AeAeg\_Whole\_ZV\_In\_RNA\_GP.24\_35.rep



positive=15, negative=2, total=17

### AeAeg\_Whole\_ZV\_In\_RNA\_GP.rep

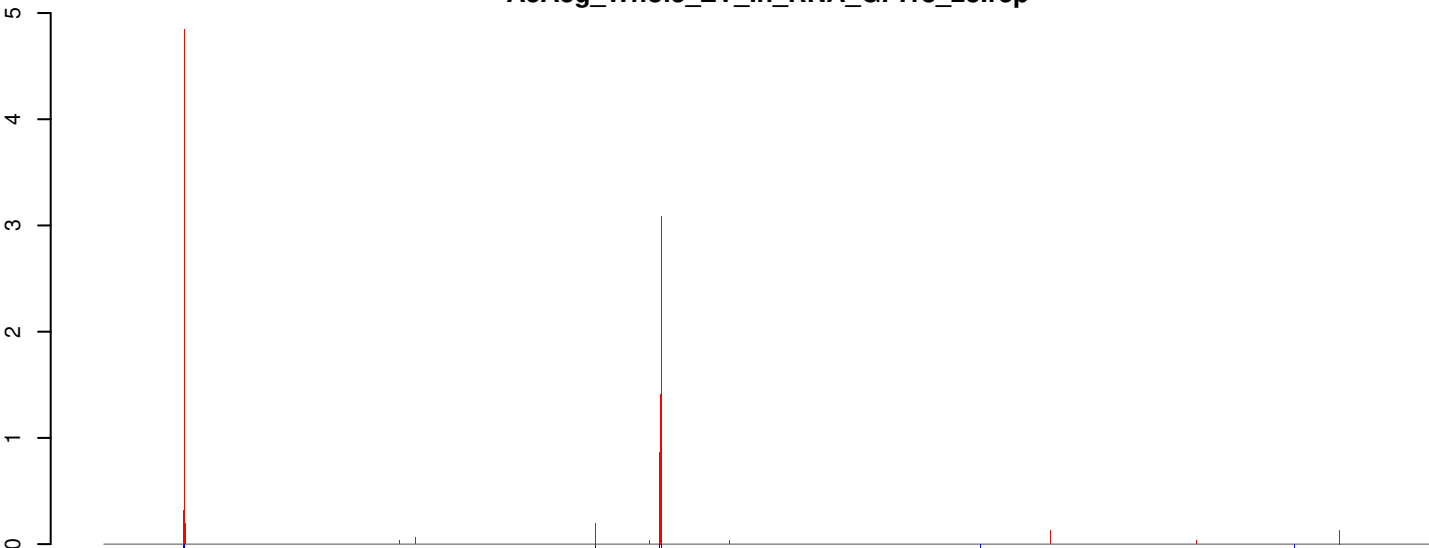


positive=40, negative=3, total=42

Window size=25, length=1267782, Wolbachia@Wolbachia\_wMel:1-1267782

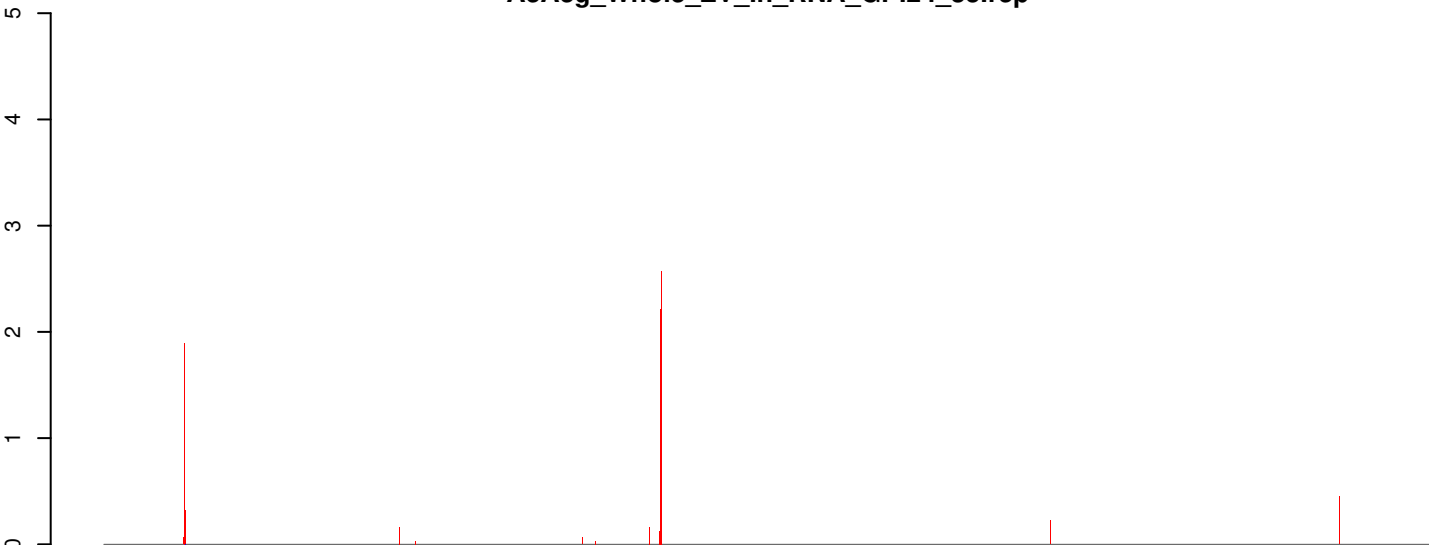
0 200000 400000 600000 800000 1000000 1200000

**AeAeg\_Whole\_ZV\_In\_RNA\_GP.18\_23.rep**



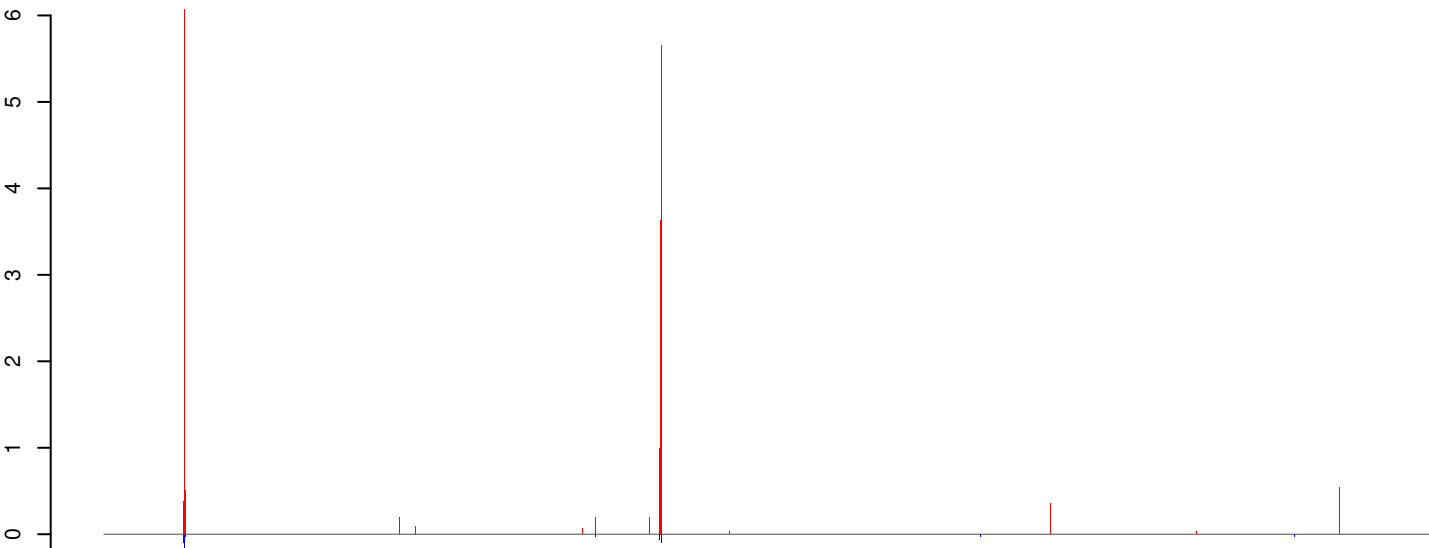
positive=25, negative=1, total=26

**AeAeg\_Whole\_ZV\_In\_RNA\_GP.24\_35.rep**



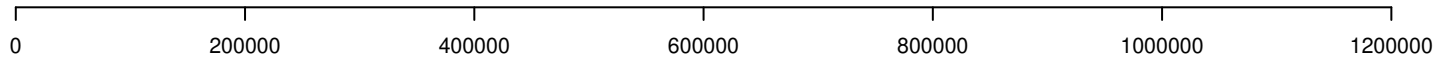
positive=15, negative=1, total=16

**AeAeg\_Whole\_ZV\_In\_RNA\_GP.rep**

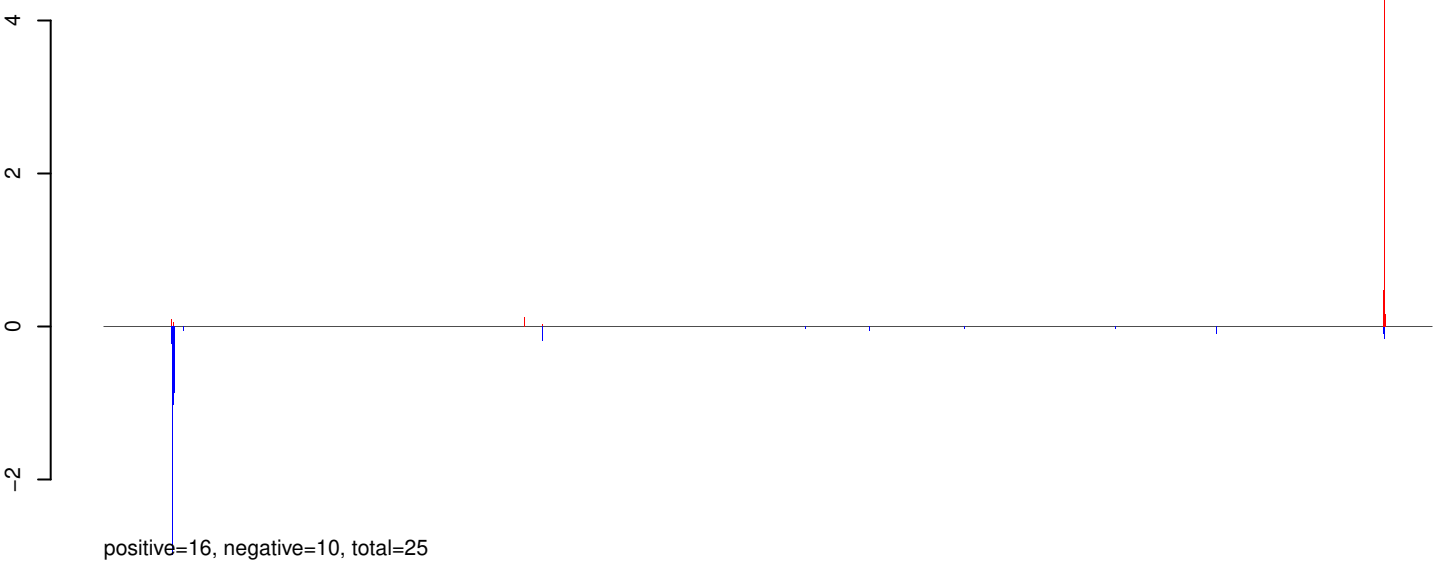


positive=40, negative=2, total=41

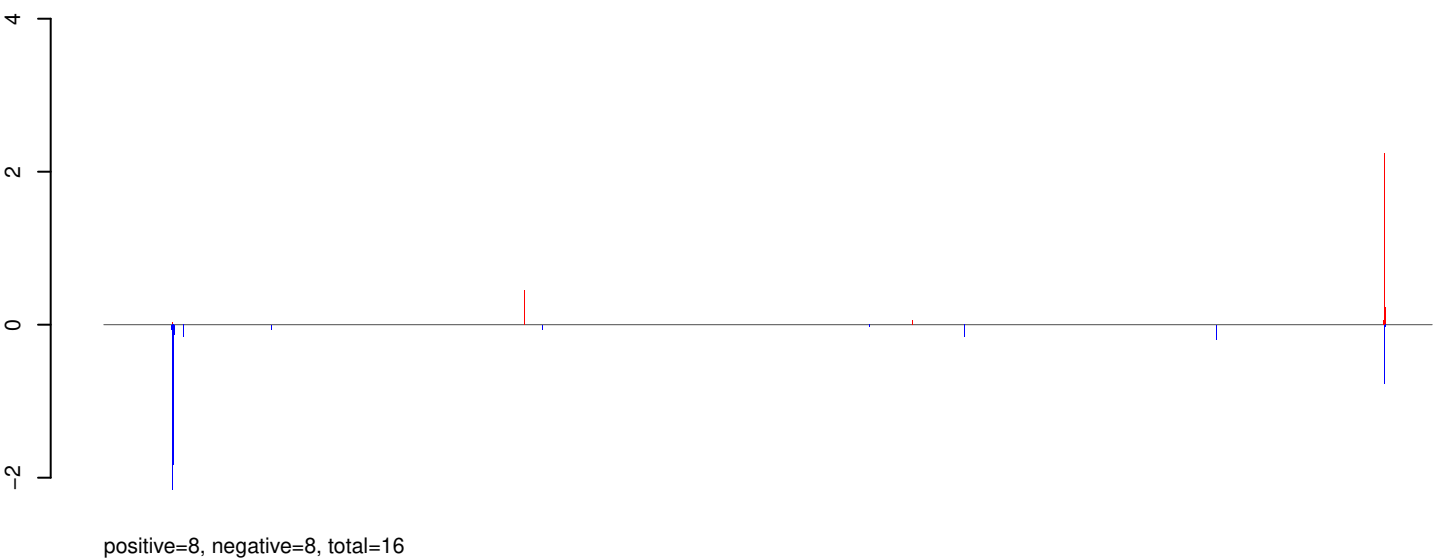
Window size=25, length=1158805, Wolbachia@Wolbachia\_wAus:1-1158805



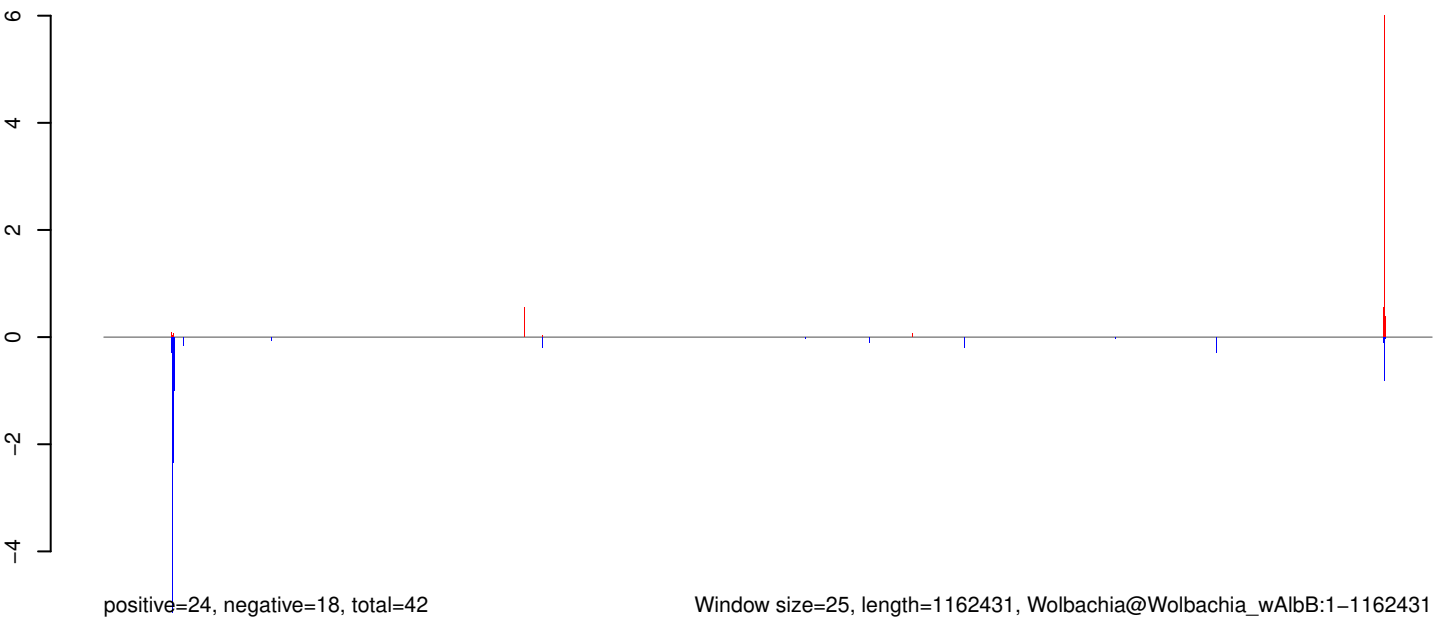
### AeAeg\_Whole\_ZV\_In\_RNA\_GP.18\_23.rep



### AeAeg\_Whole\_ZV\_In\_RNA\_GP.24\_35.rep

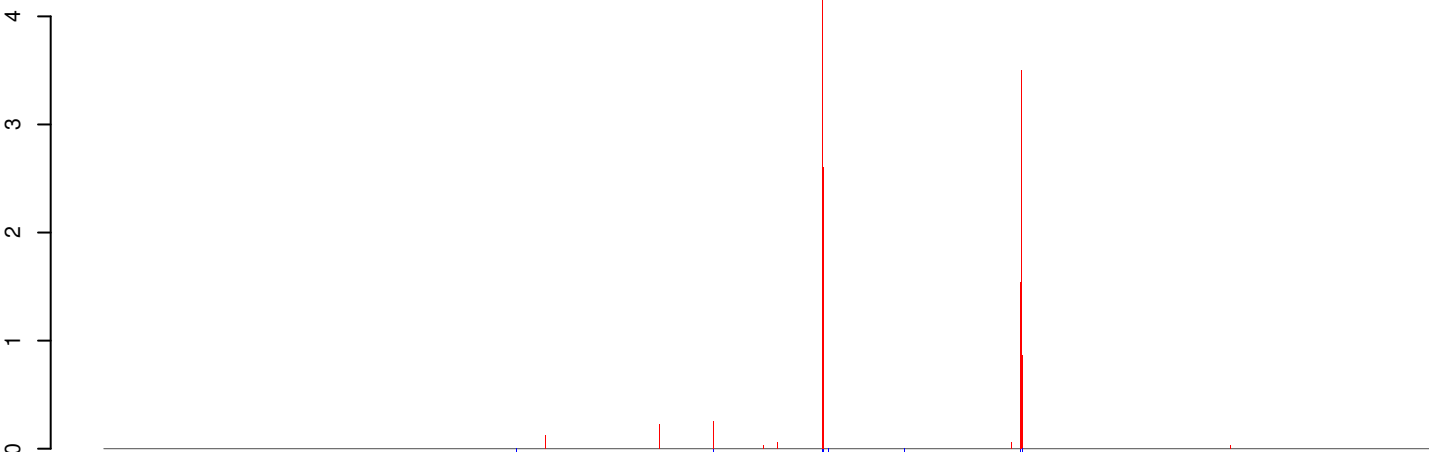


### AeAeg\_Whole\_ZV\_In\_RNA\_GP.rep





**AeAeg\_Whole\_ZV\_In\_RNA\_GP.18\_23.rep**



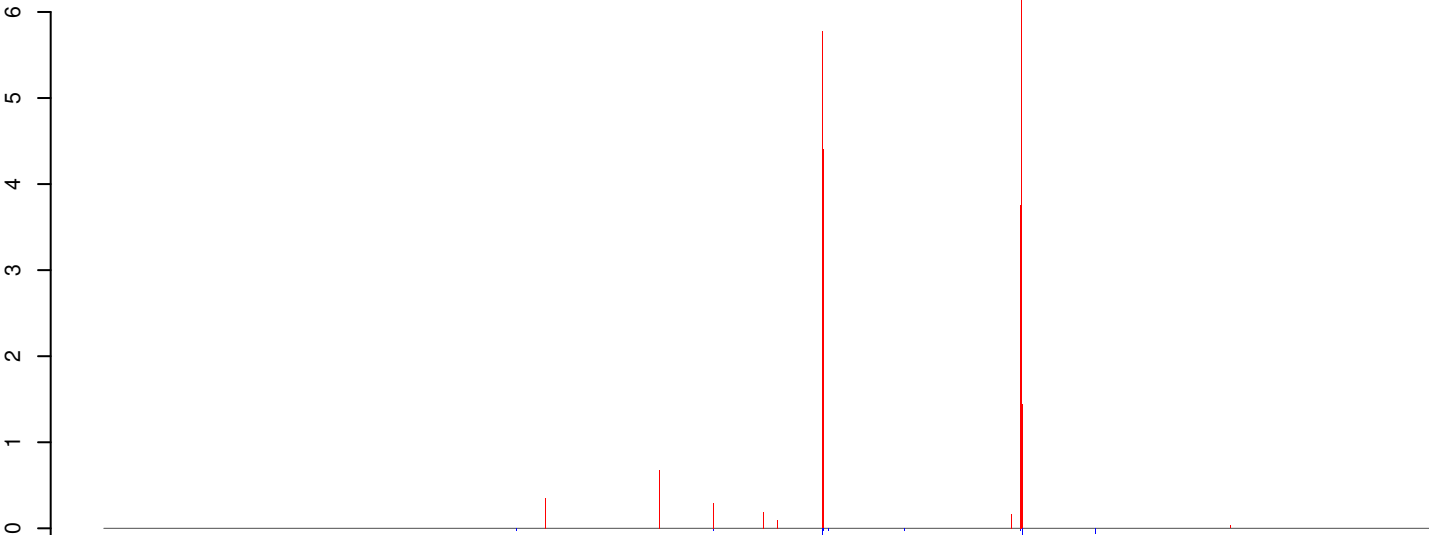
positive=25, negative=1, total=26

**AeAeg\_Whole\_ZV\_In\_RNA\_GP.24\_35.rep**



positive=15, negative=1, total=16

**AeAeg\_Whole\_ZV\_In\_RNA\_GP.rep**

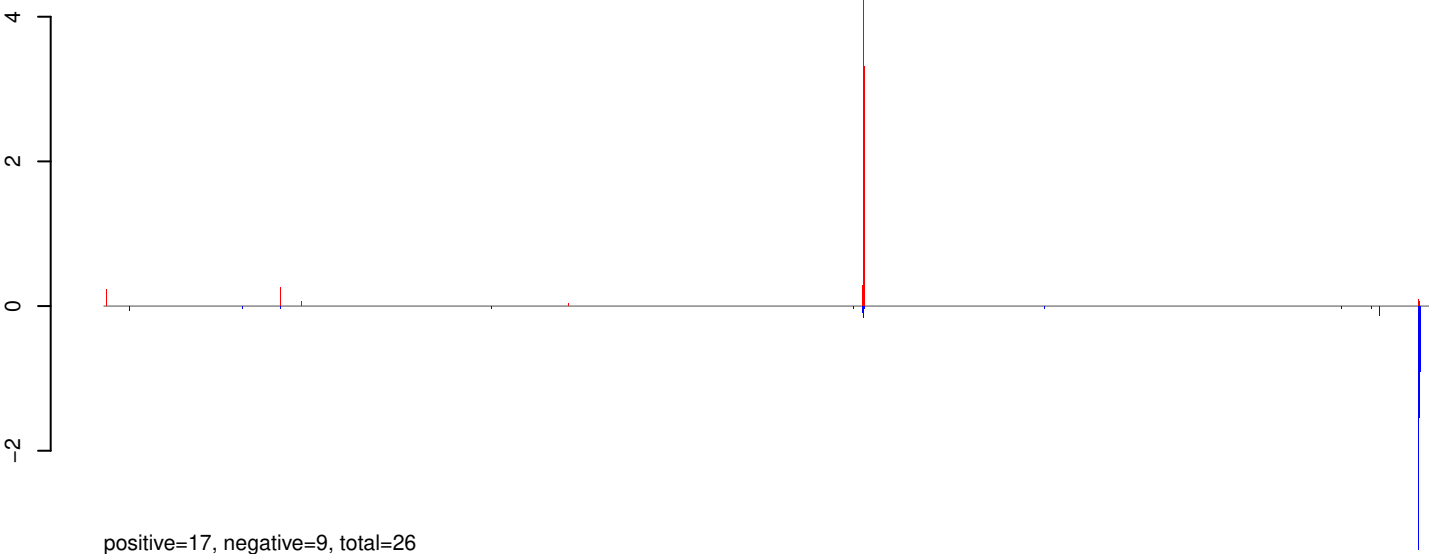


positive=40, negative=2, total=42

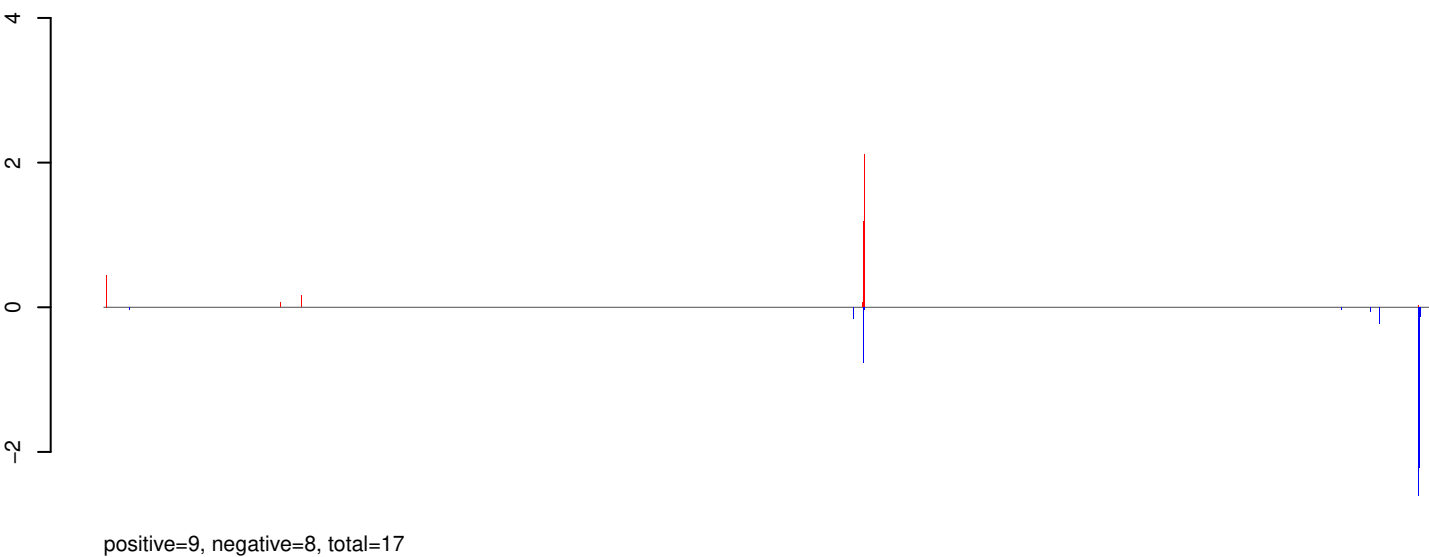
Window size=25, length=1301823, Wolbachia@Wolbachia\_wSim\_wNo:1-1301823

0 200000 400000 600000 800000 1000000 1200000

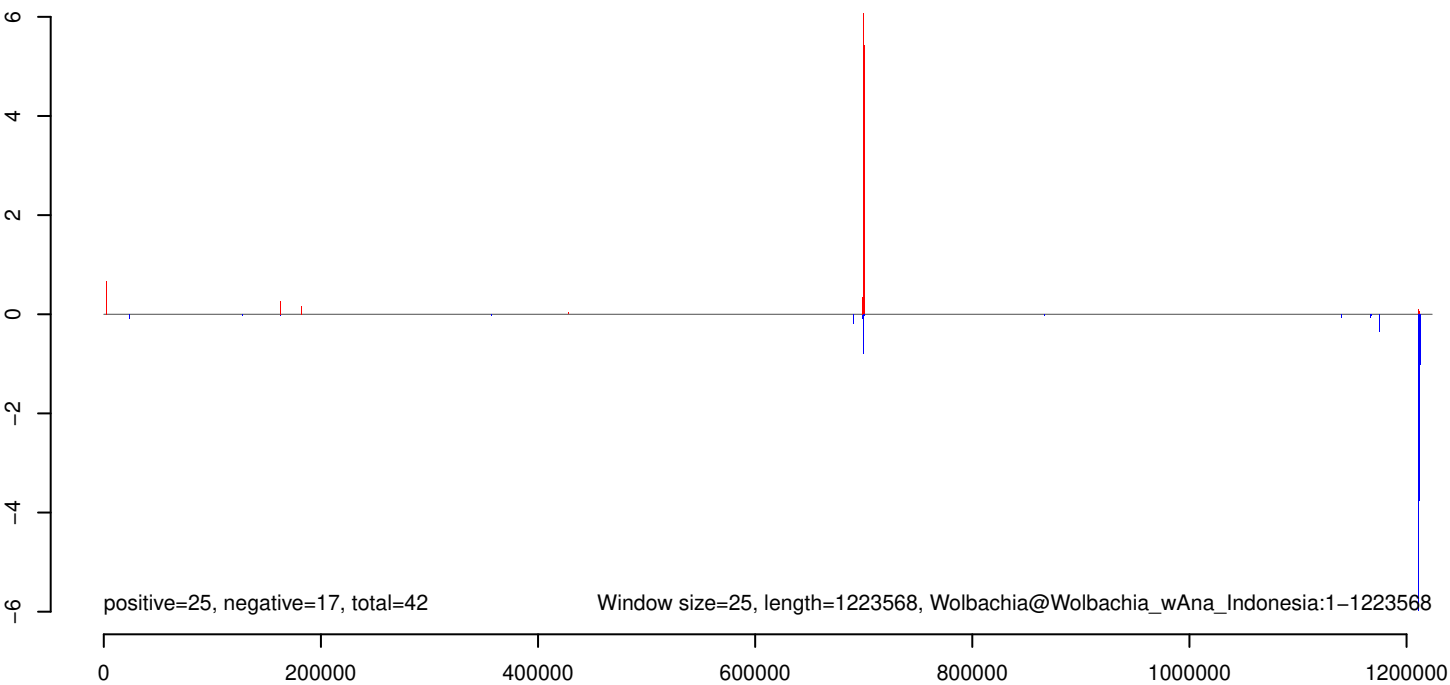
### AeAeg\_Whole\_ZV\_In\_RNA\_GP.18\_23.rep



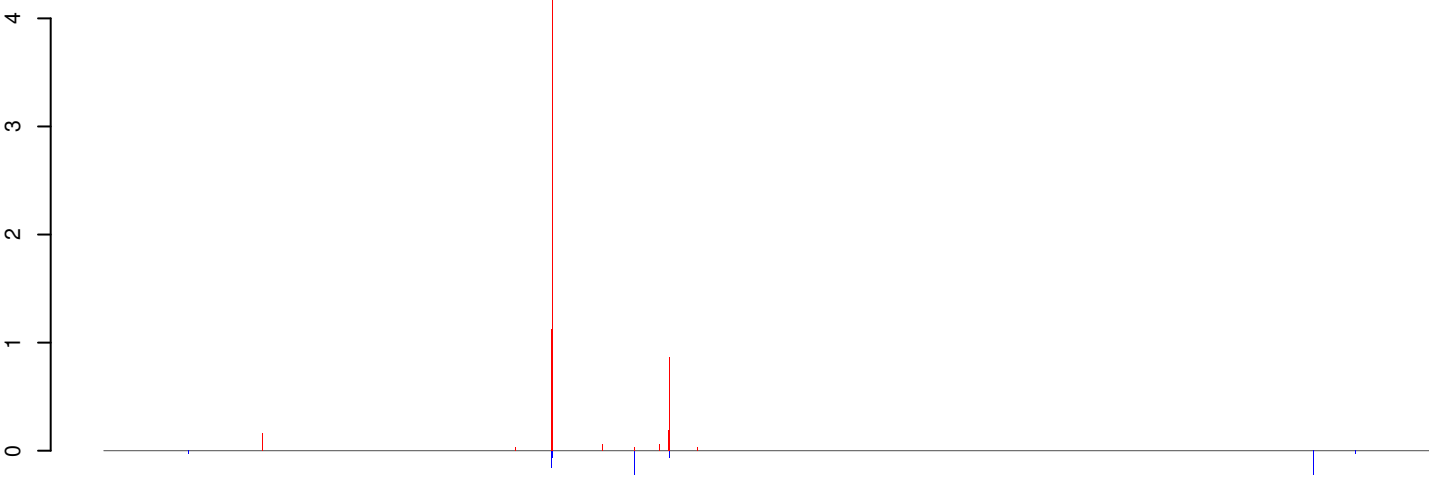
### AeAeg\_Whole\_ZV\_In\_RNA\_GP.24\_35.rep



### AeAeg\_Whole\_ZV\_In\_RNA\_GP.rep

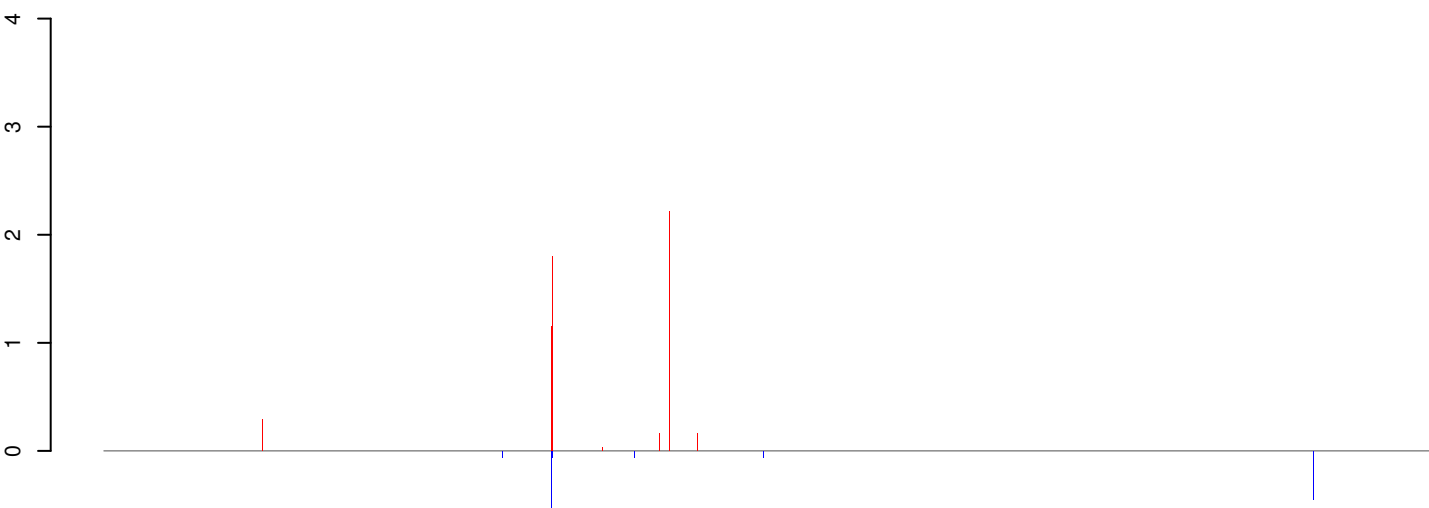


**AeAeg\_Whole\_ZV\_In\_RNA\_GP.18\_23.rep**



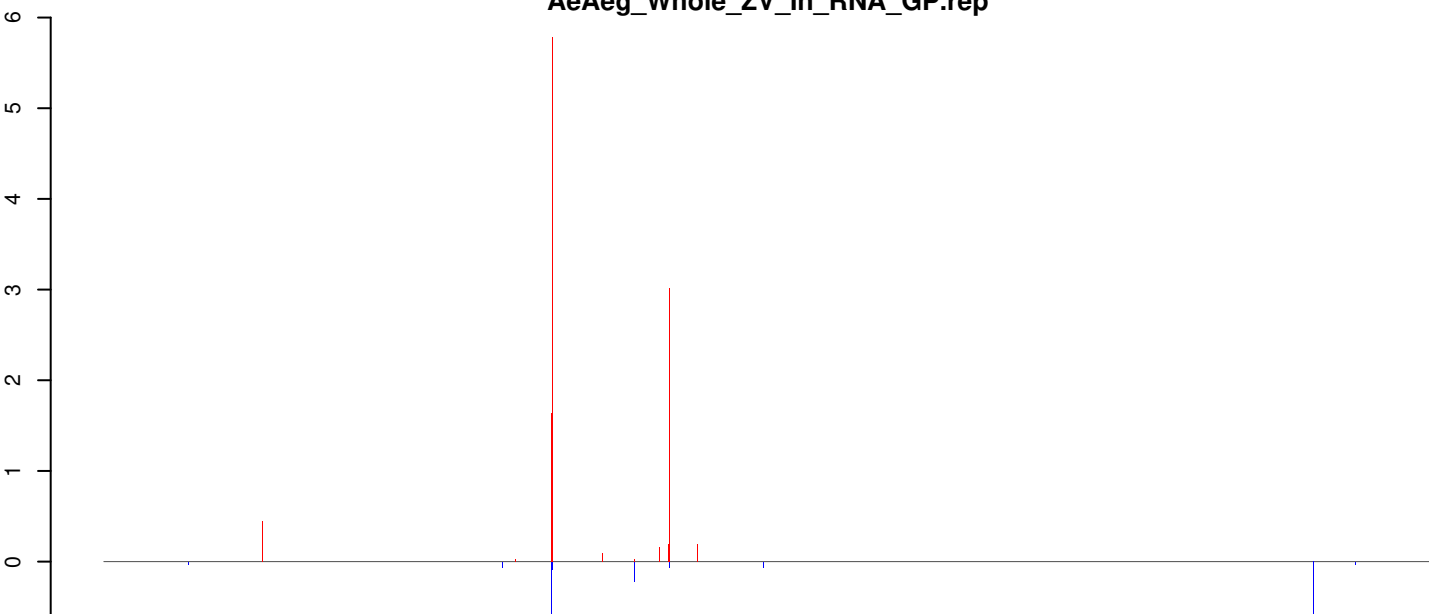
positive=19, negative=1, total=20

**AeAeg\_Whole\_ZV\_In\_RNA\_GP.24\_35.rep**



positive=11, negative=2, total=12

**AeAeg\_Whole\_ZV\_In\_RNA\_GP.rep**



positive=29, negative=3, total=32

Window size=25, length=1176060, Wolbachia@Wolbachia\_FL2016:1-1176060

