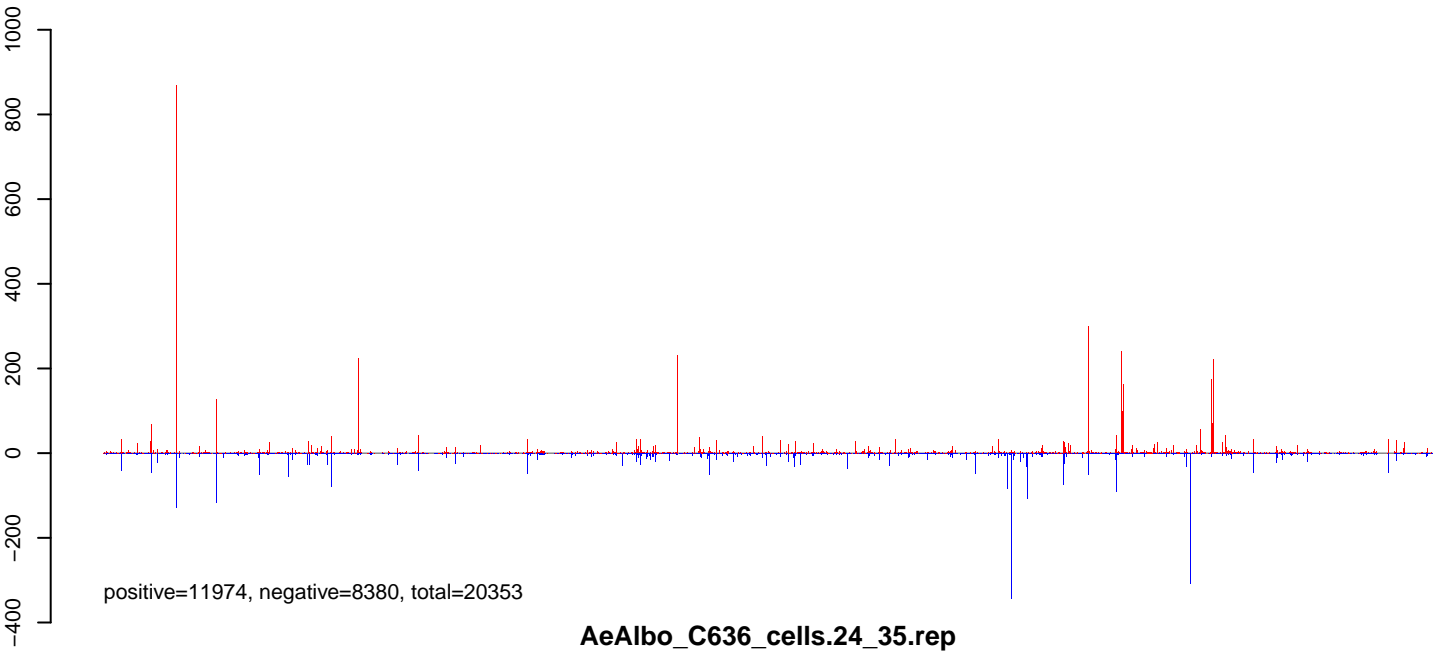
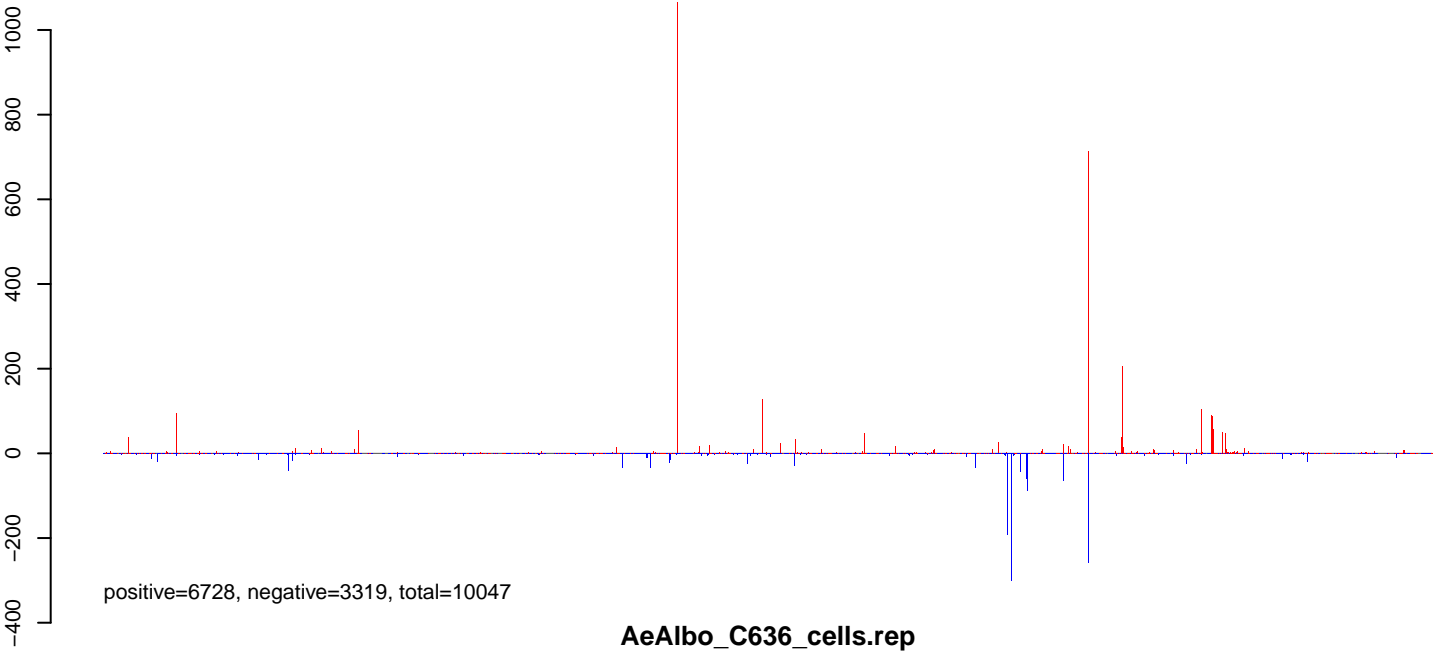


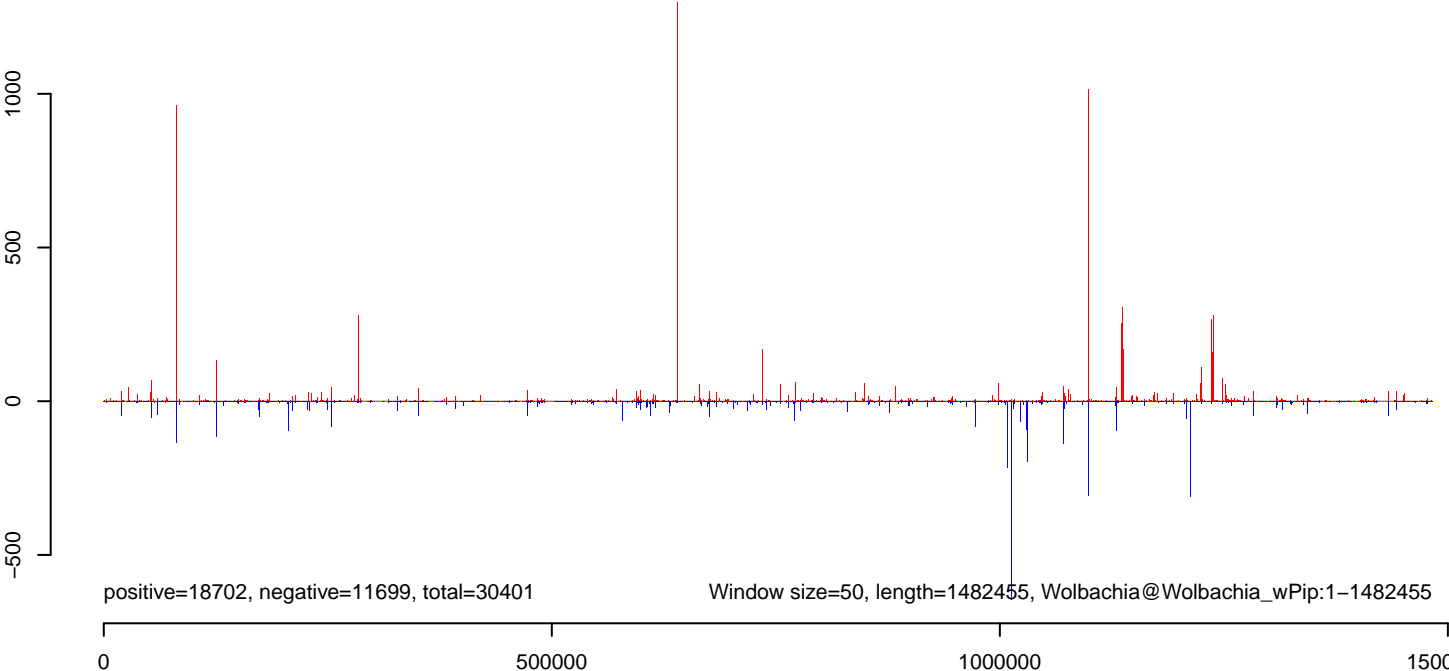
**AeAlbo\_C636\_cells.18\_23.rep**



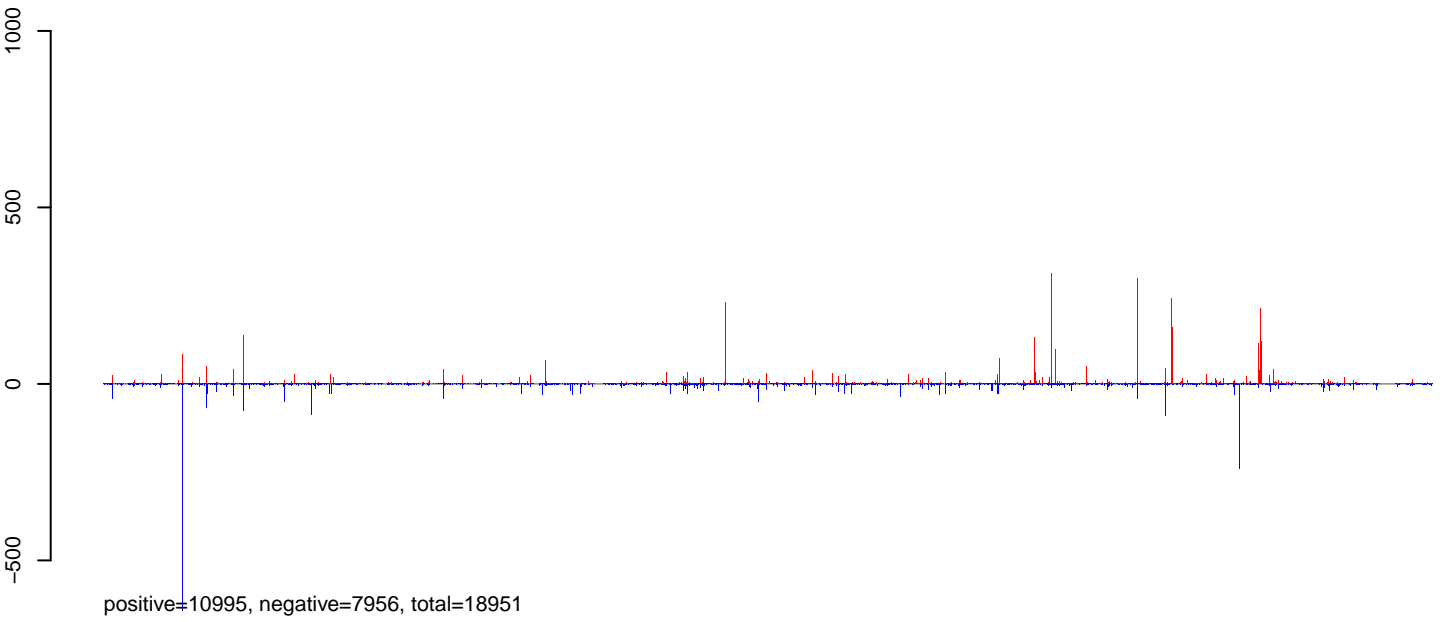
**AeAlbo\_C636\_cells.24\_35.rep**



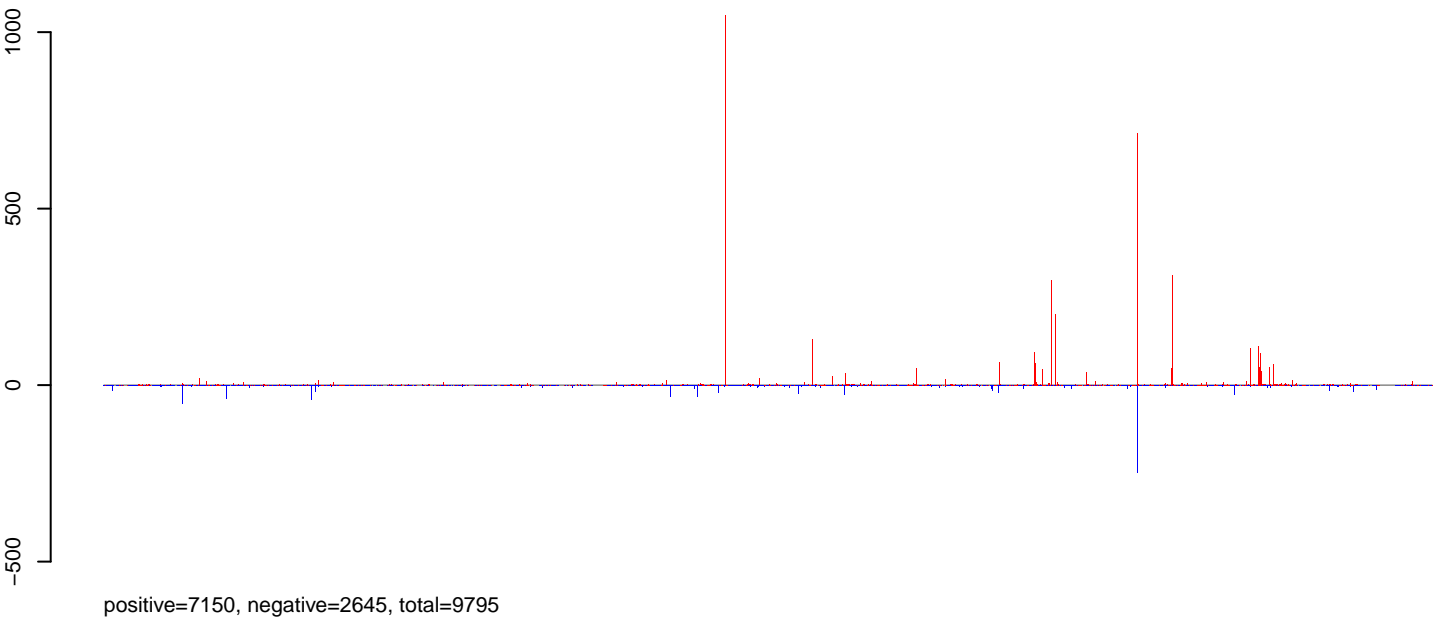
**AeAlbo\_C636\_cells.rep**



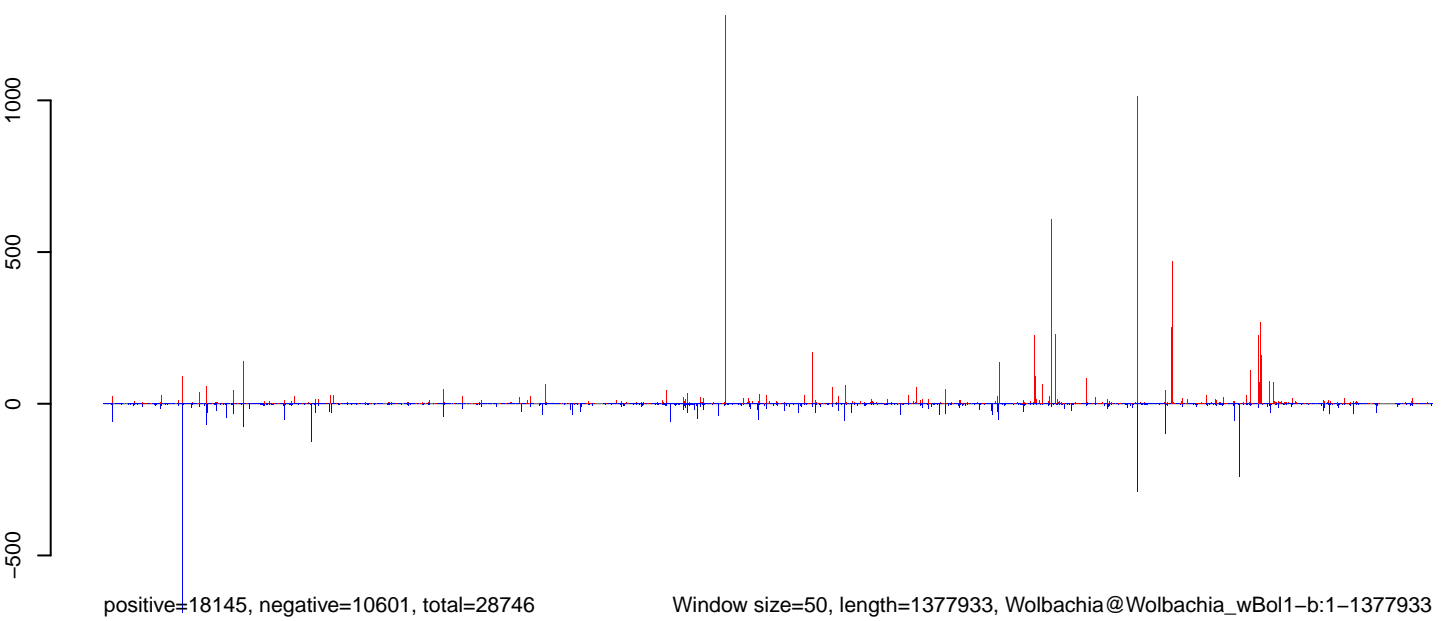
**AeAlbo\_C636\_cells.18\_23.rep**



**AeAlbo\_C636\_cells.24\_35.rep**



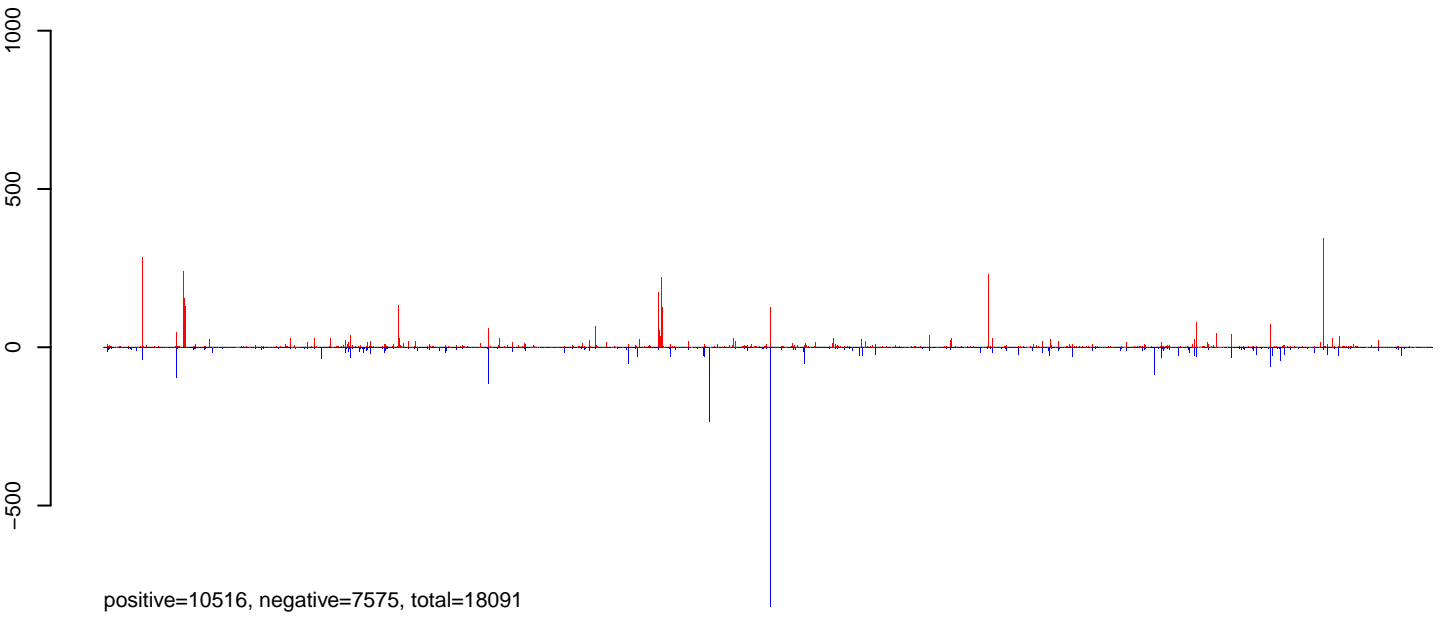
**AeAlbo\_C636\_cells.rep**



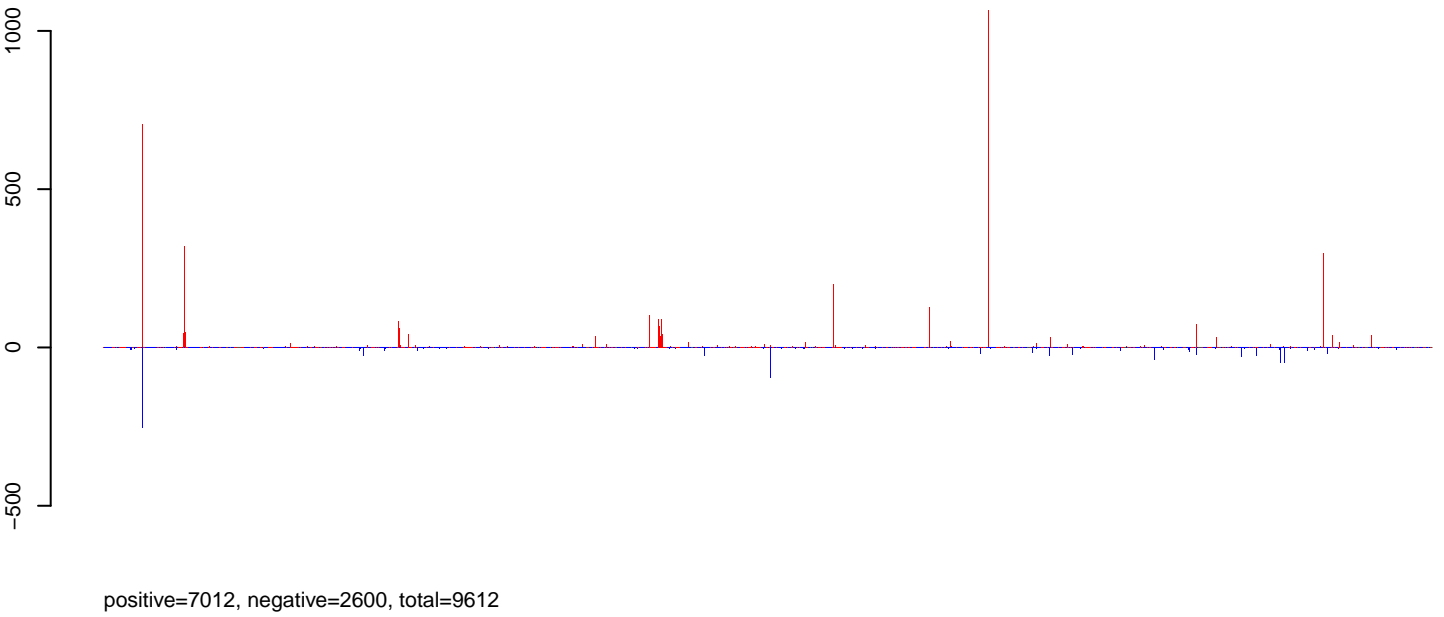
Window size=50, length=1377933, Wolbachia@Wolbachia\_wBol1-b:1-1377933

0 200000 400000 600000 800000 1000000 1200000 1400000

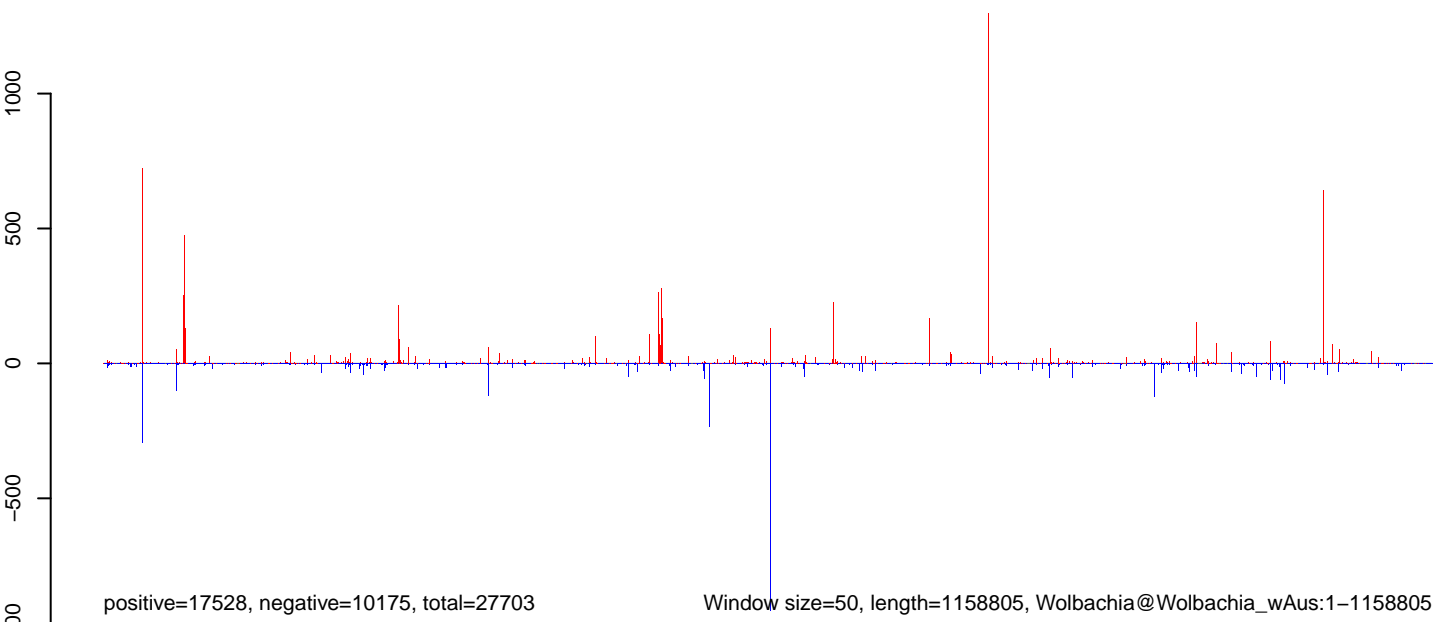
**AeAlbo\_C636\_cells.18\_23.rep**



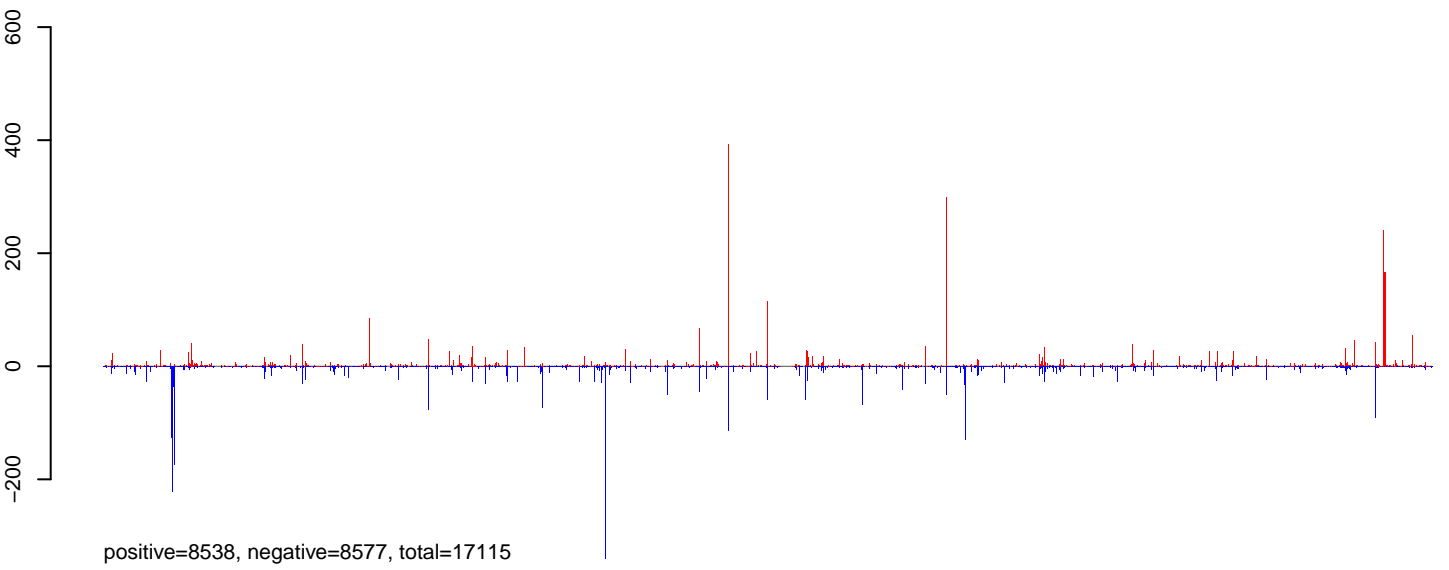
**AeAlbo\_C636\_cells.24\_35.rep**



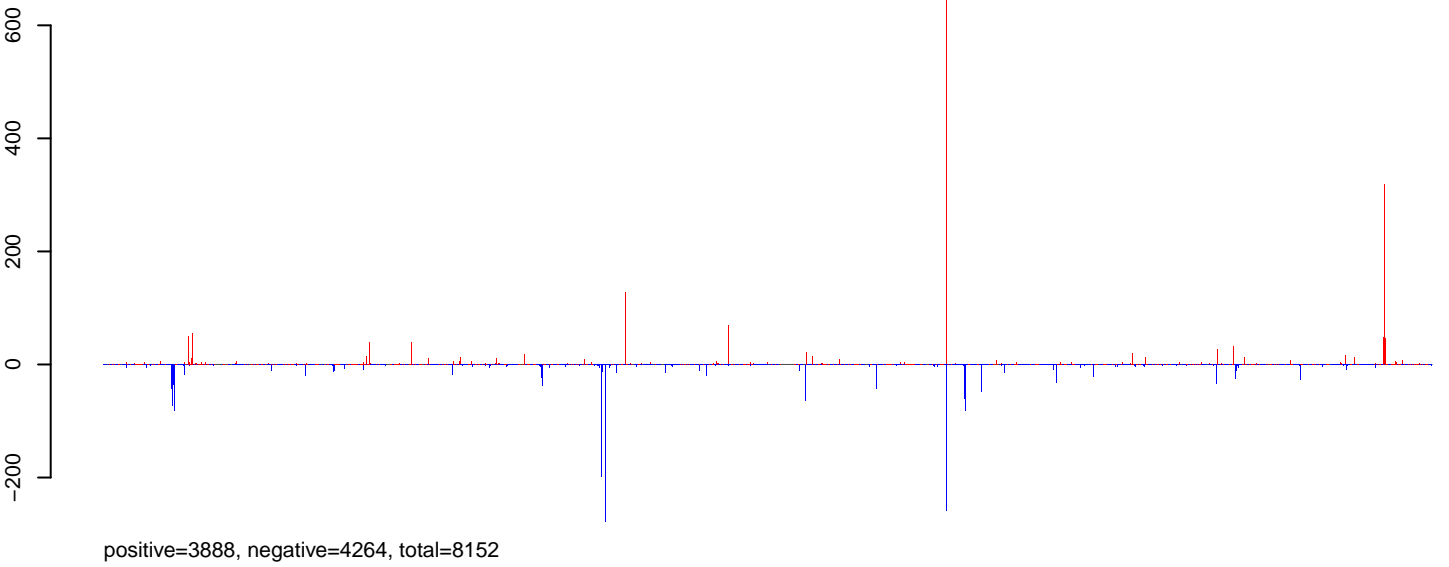
**AeAlbo\_C636\_cells.rep**



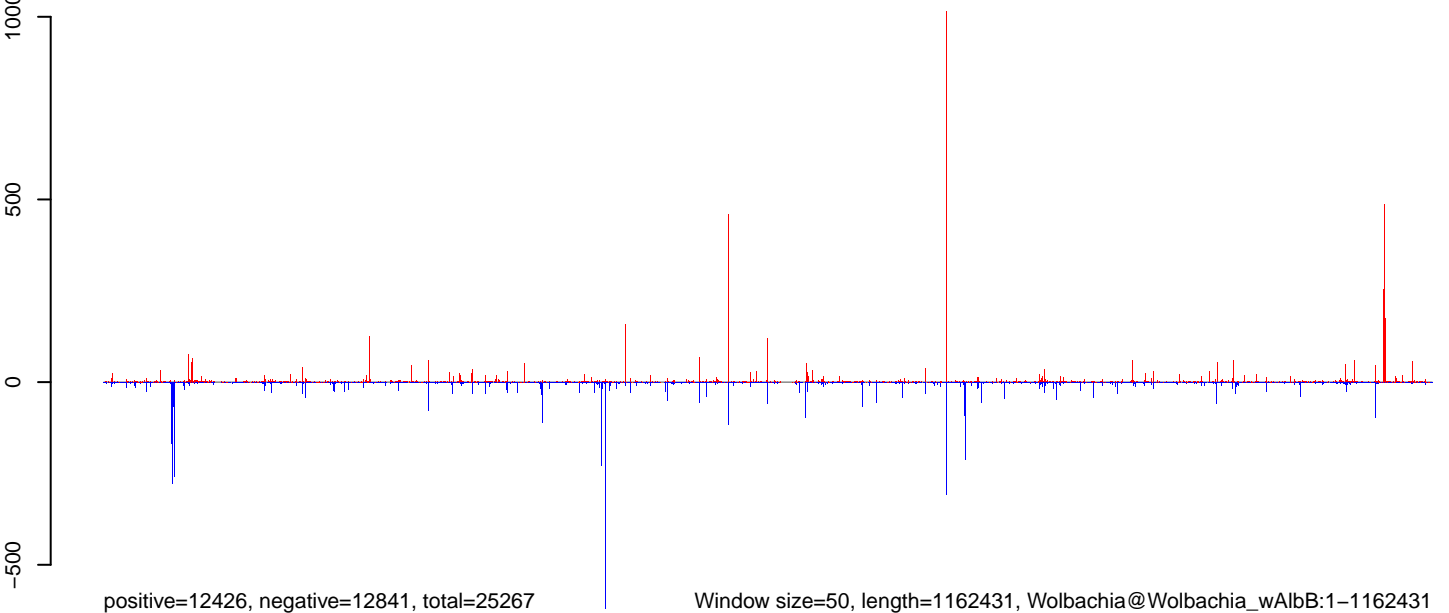
AeAlbo\_C636\_cells.18\_23.rep



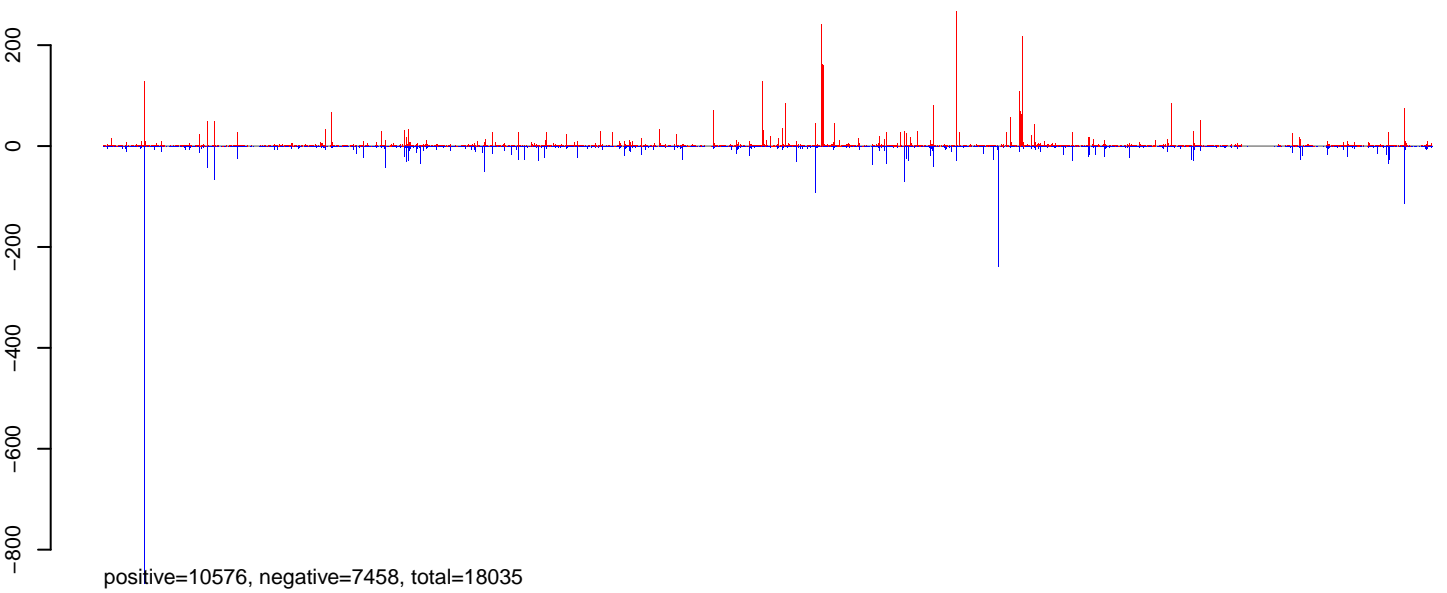
AeAlbo\_C636\_cells.24\_35.rep



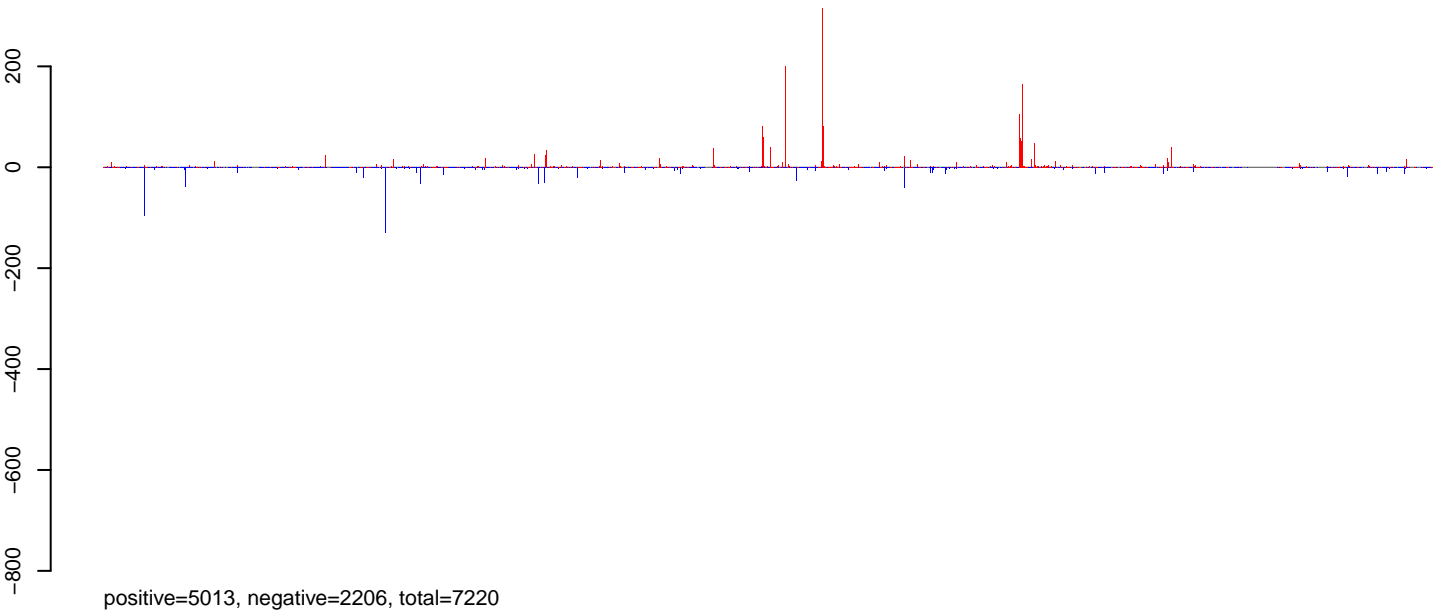
AeAlbo\_C636\_cells.rep



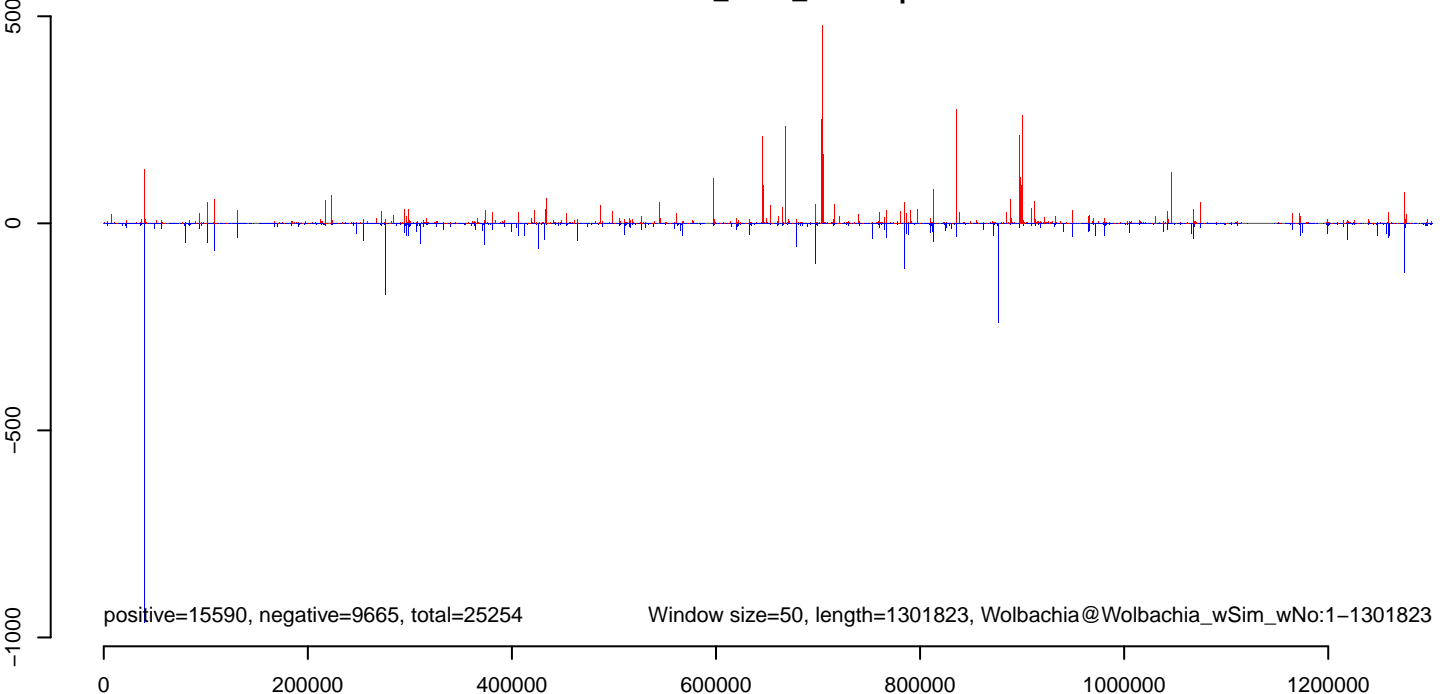
**AeAlbo\_C636\_cells.18\_23.rep**



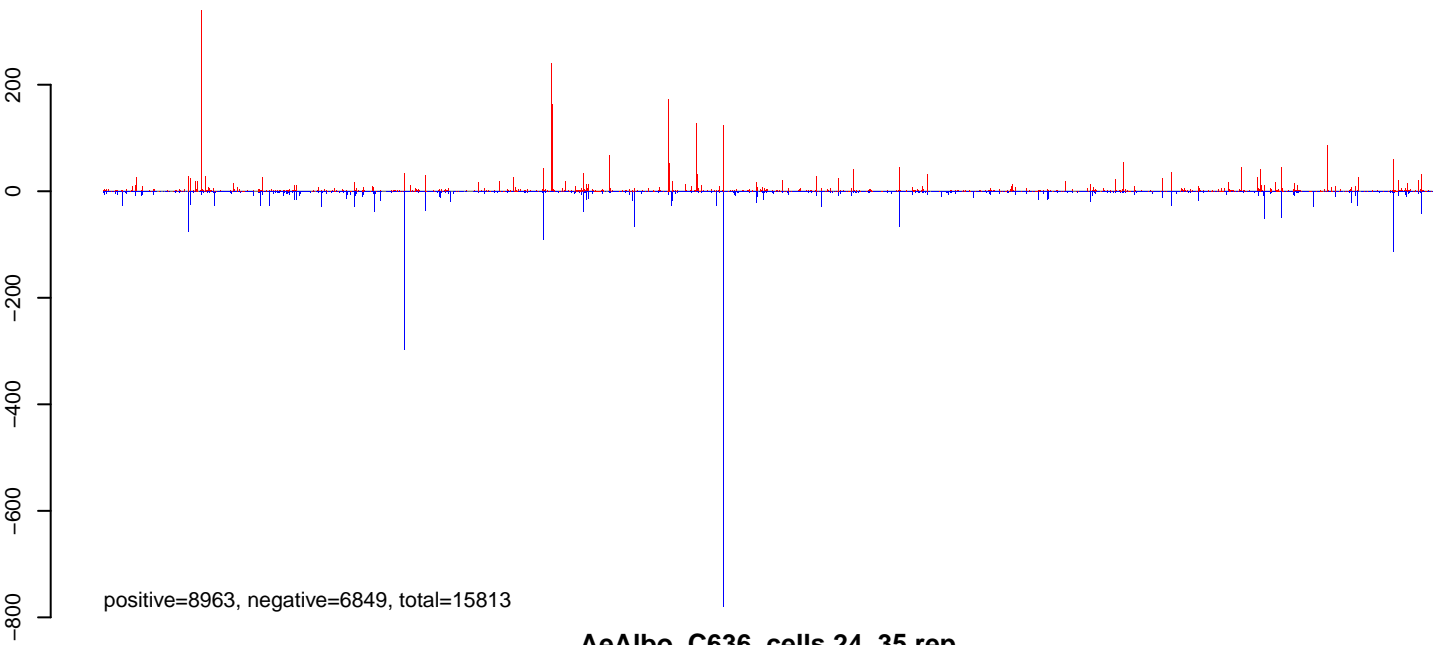
**AeAlbo\_C636\_cells.24\_35.rep**



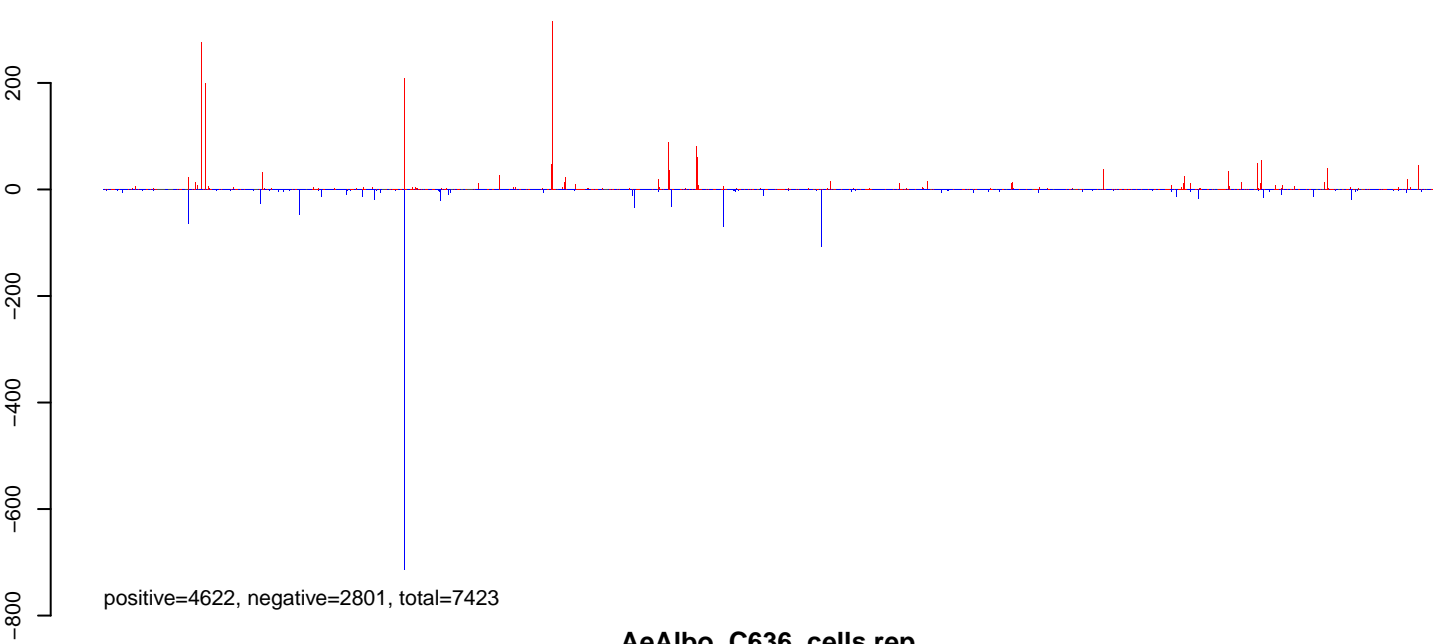
**AeAlbo\_C636\_cells.rep**



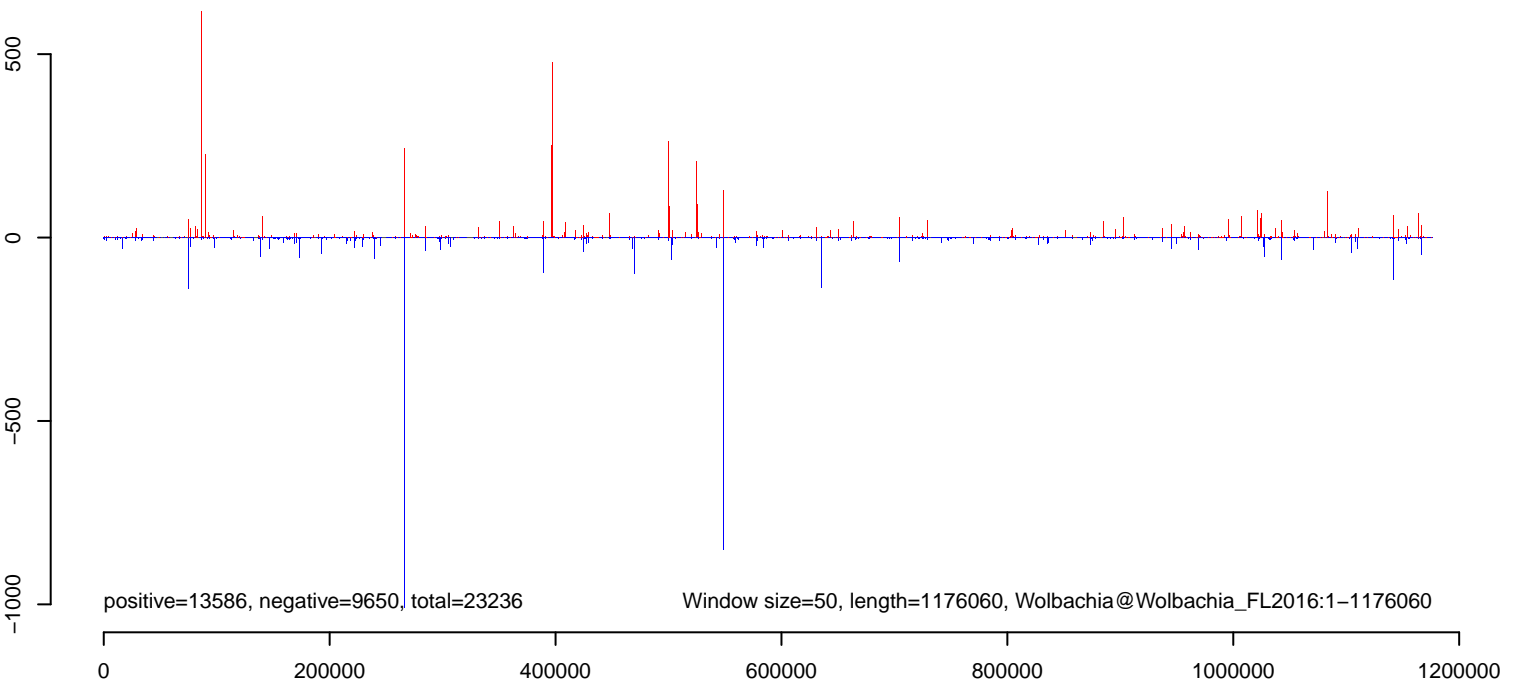
**AeAlbo\_C636\_cells.18\_23.rep**



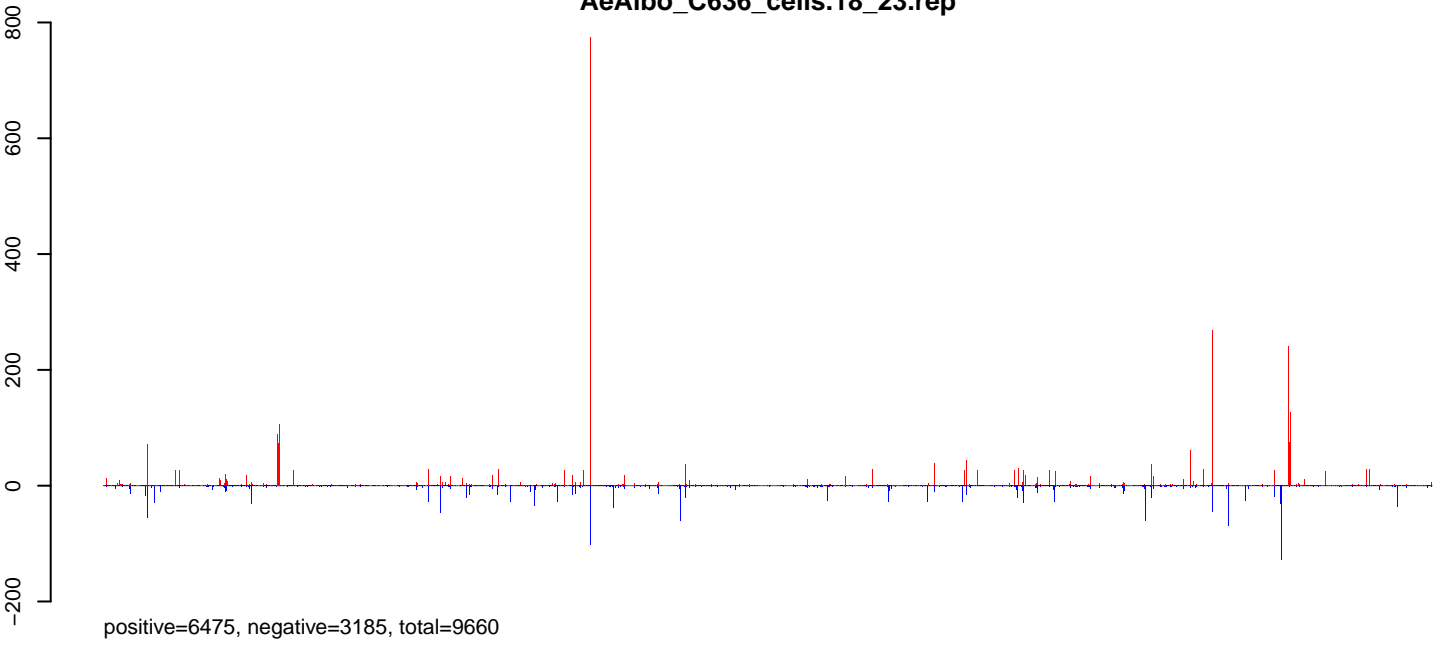
**AeAlbo\_C636\_cells.24\_35.rep**



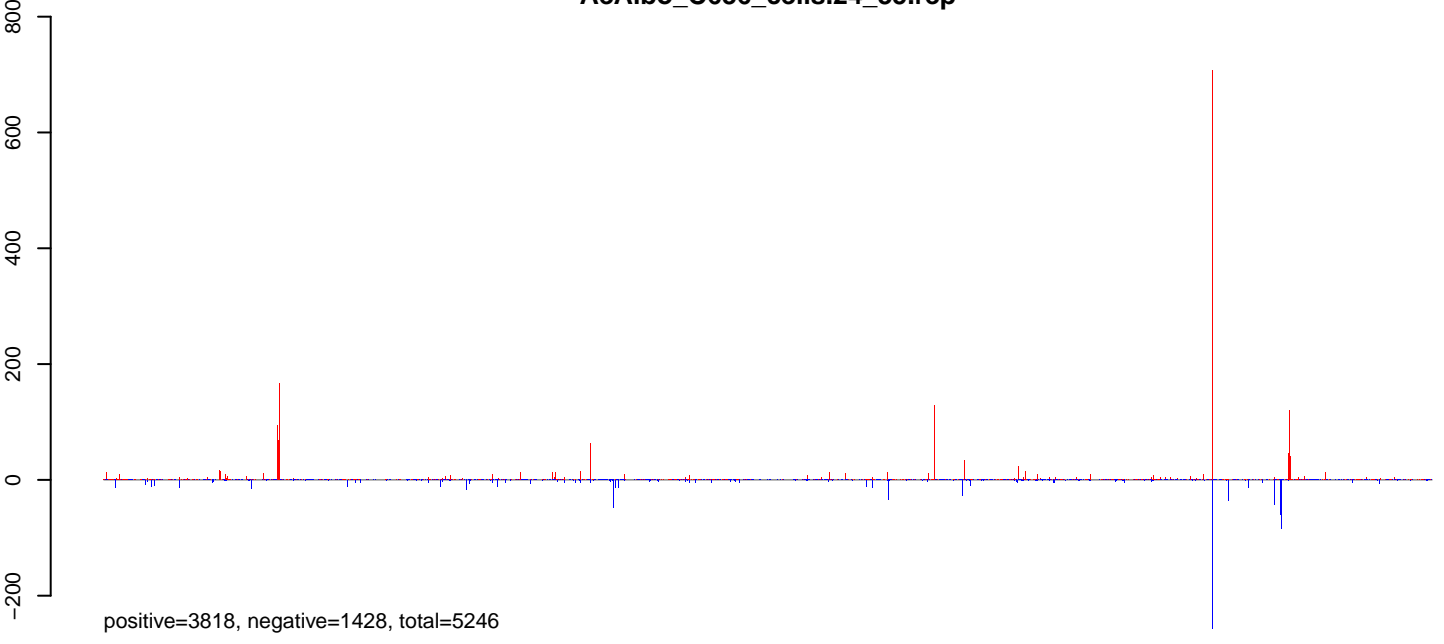
**AeAlbo\_C636\_cells.rep**



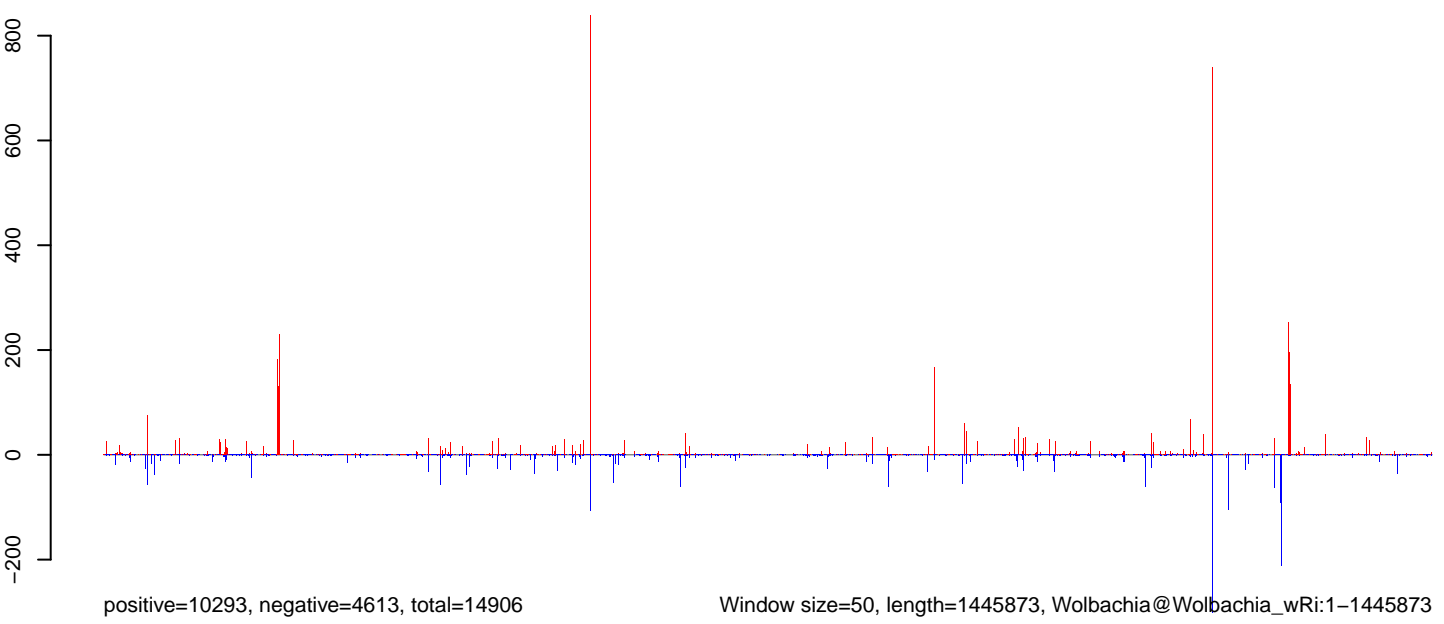
**AeAlbo\_C636\_cells.18\_23.rep**



**AeAlbo\_C636\_cells.24\_35.rep**



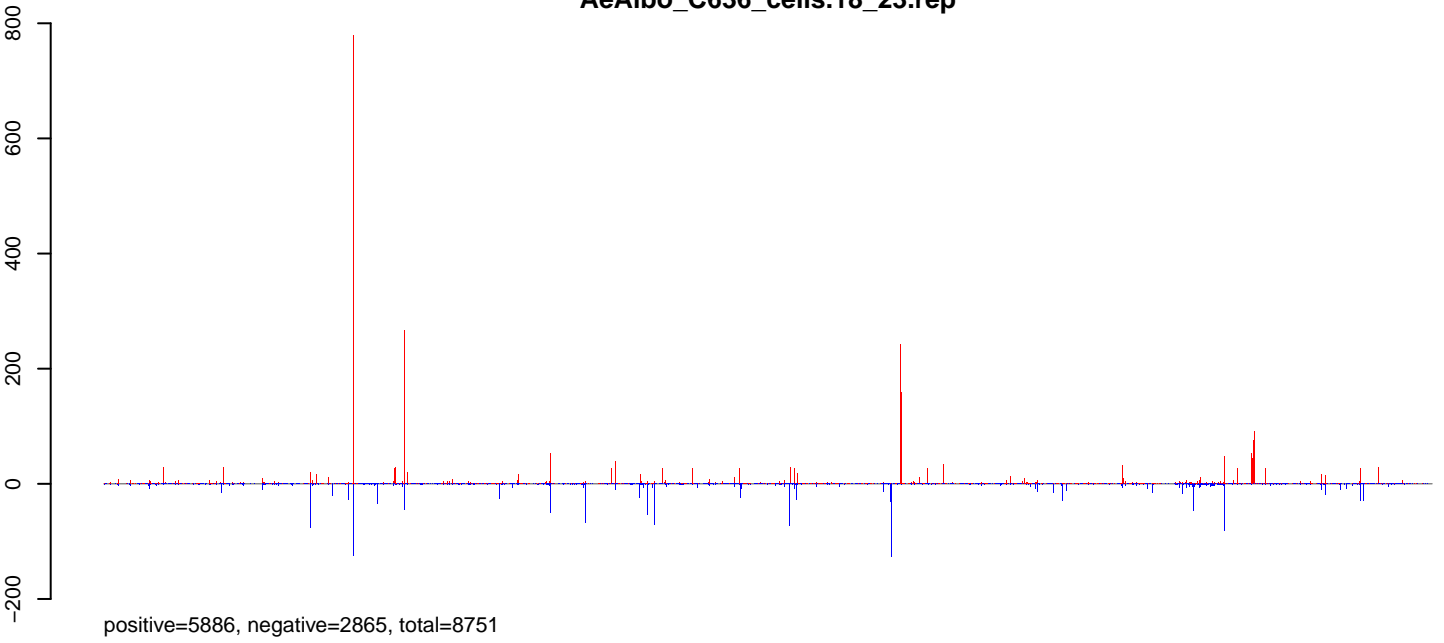
**AeAlbo\_C636\_cells.rep**



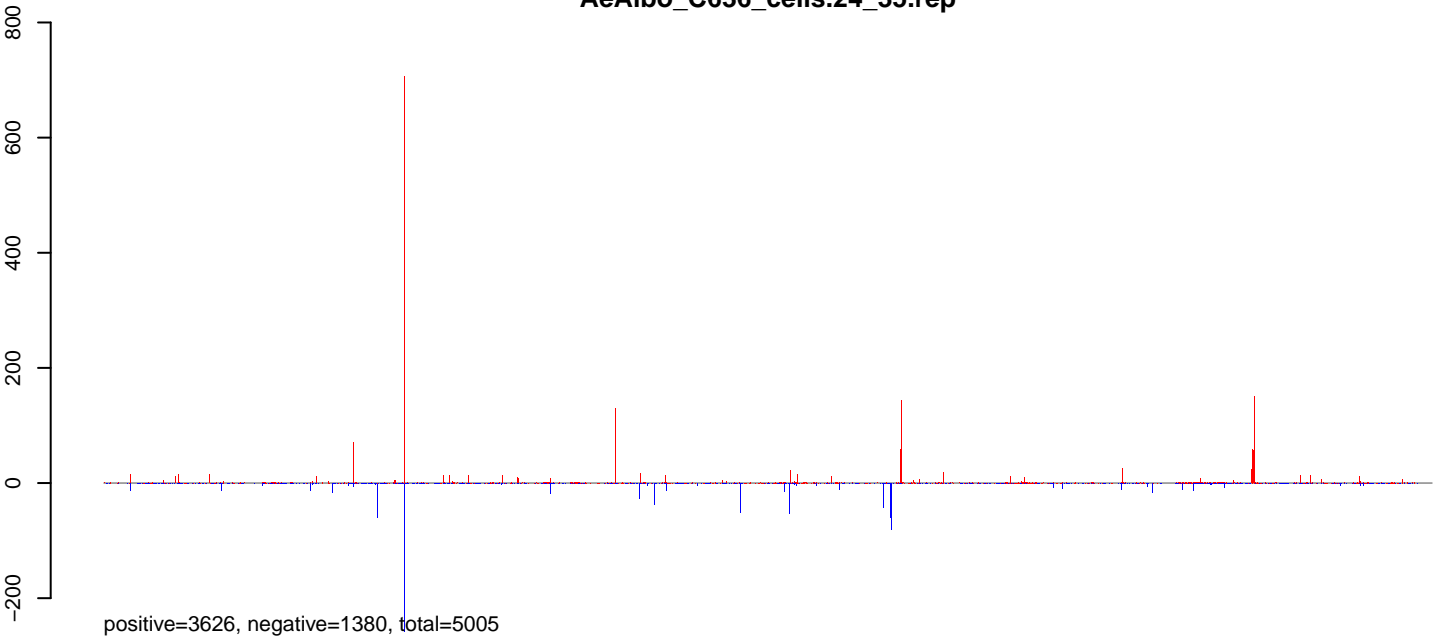
Window size=50, length=1445873, Wolbachia@Wolbachia\_wRi:1-1445873

0 500000 1000000 1500000

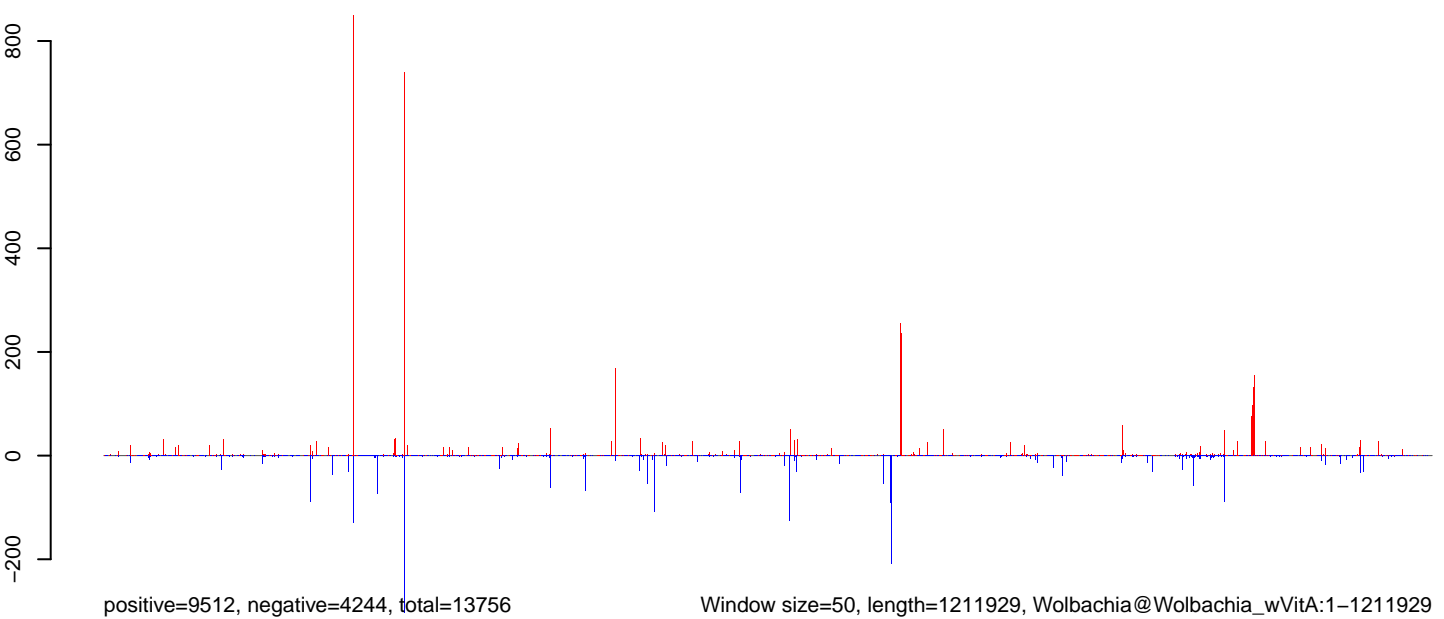
**AeAlbo\_C636\_cells.18\_23.rep**



**AeAlbo\_C636\_cells.24\_35.rep**



**AeAlbo\_C636\_cells.rep**

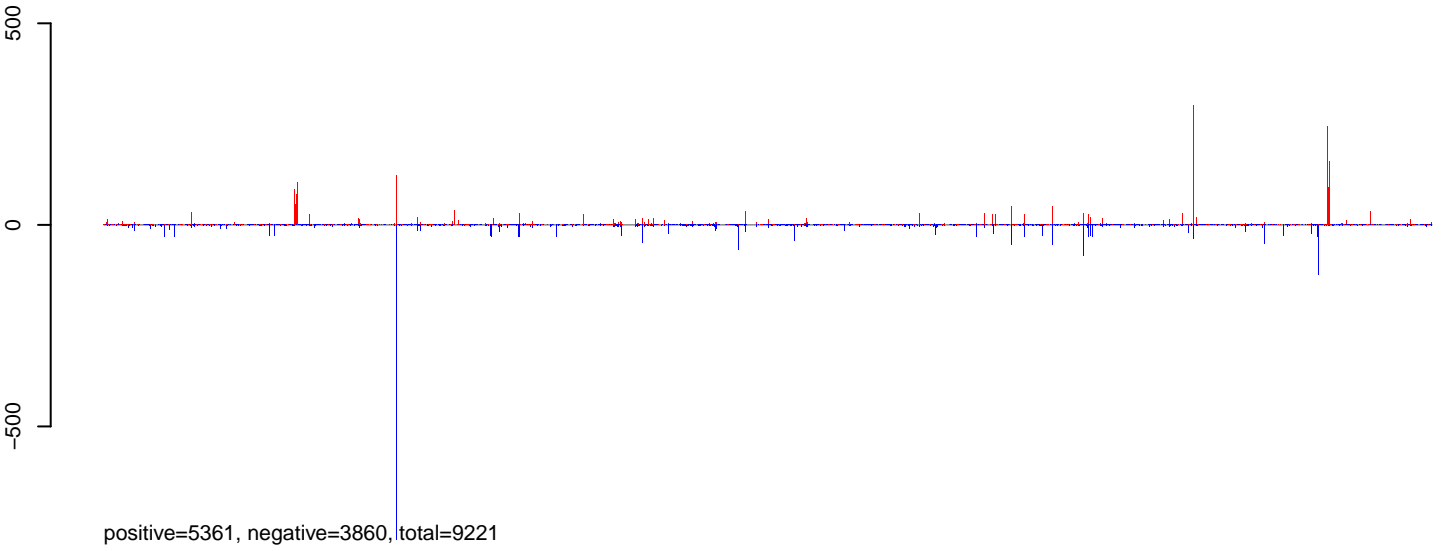


Window size=50, length=1211929, Wolbachia@Wolbachia\_wVitA:1-1211929

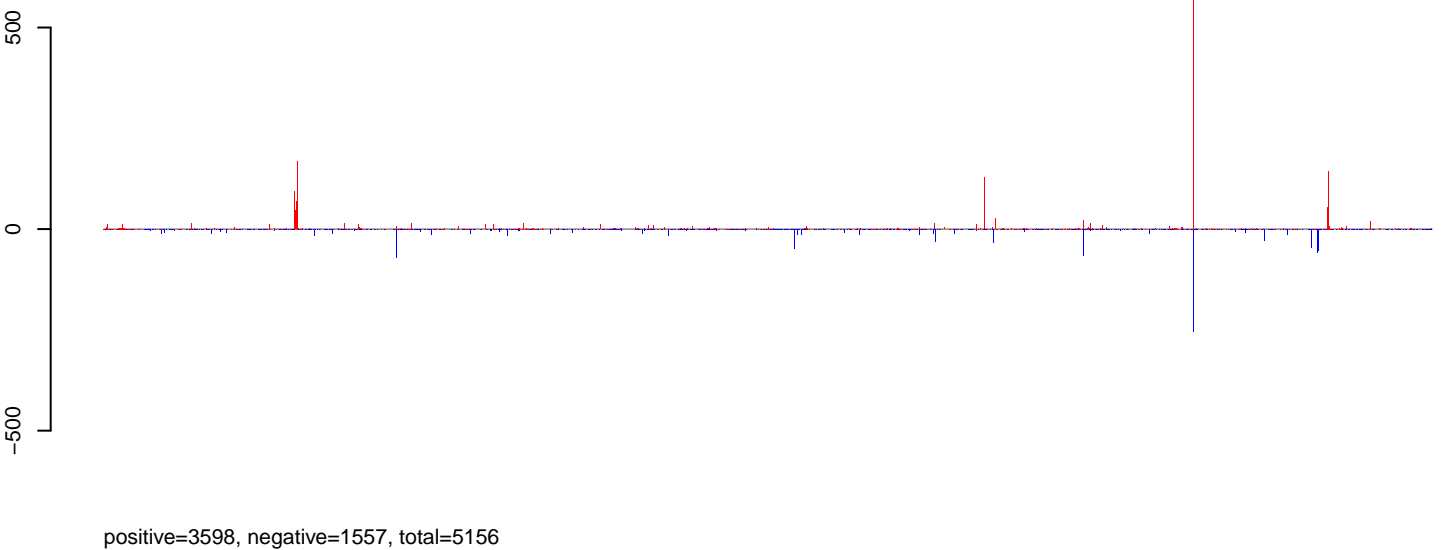
0 200000 400000 600000 800000 1000000 1200000



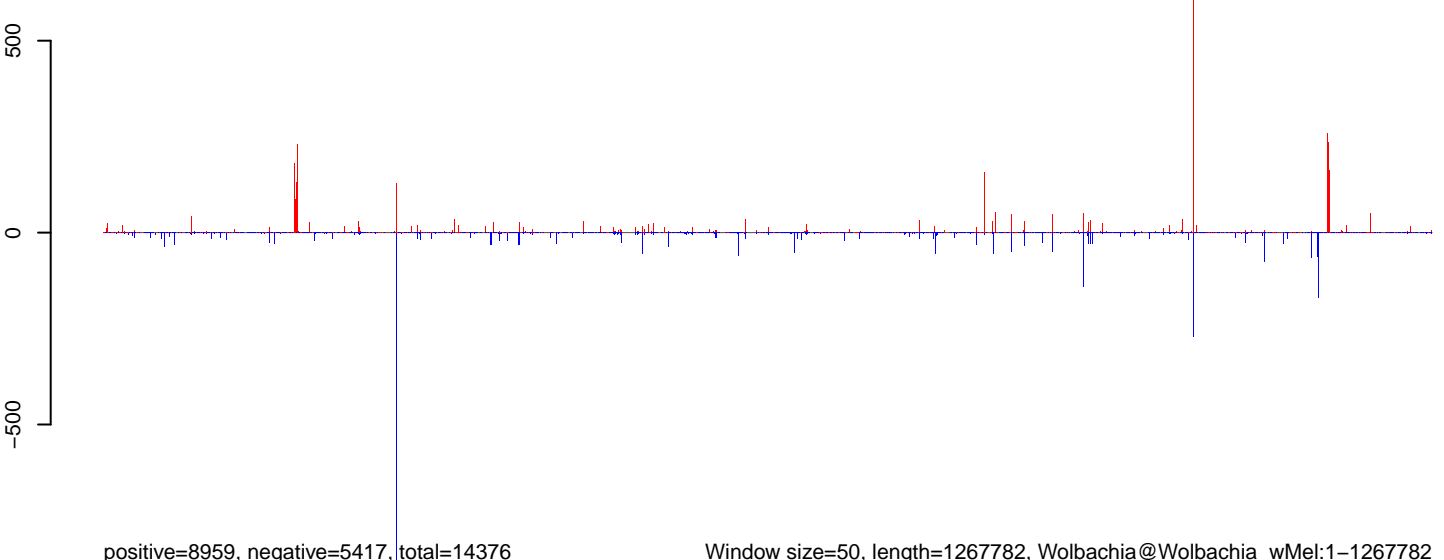
**AeAlbo\_C636\_cells.18\_23.rep**



**AeAlbo\_C636\_cells.24\_35.rep**



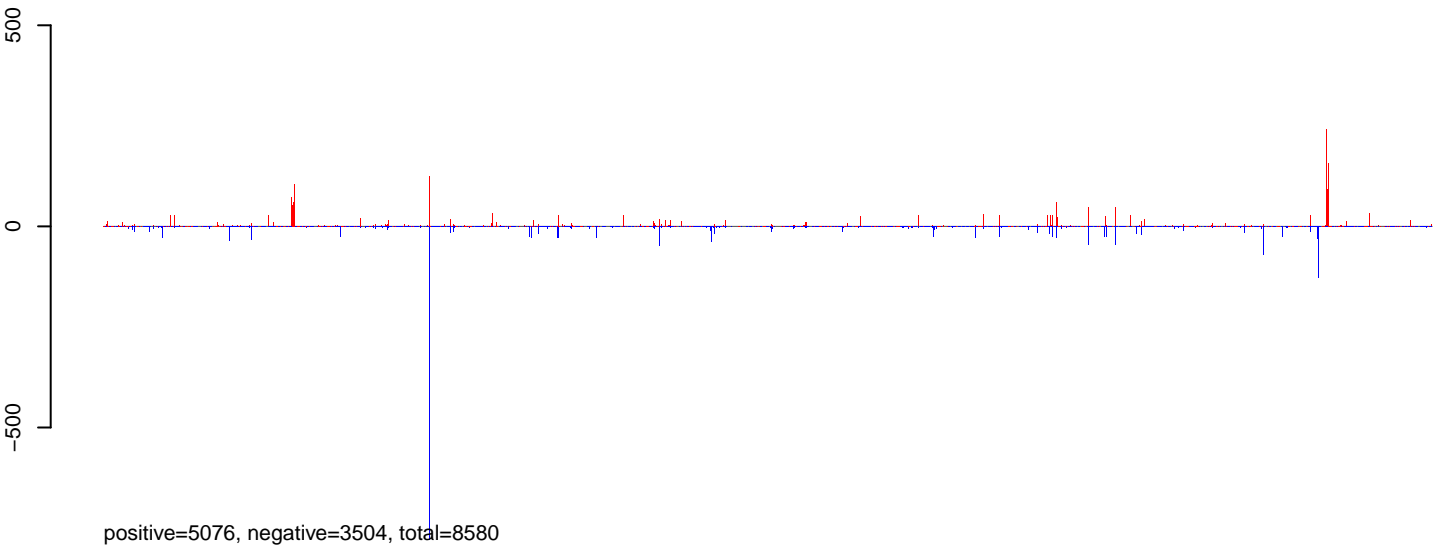
**AeAlbo\_C636\_cells.rep**



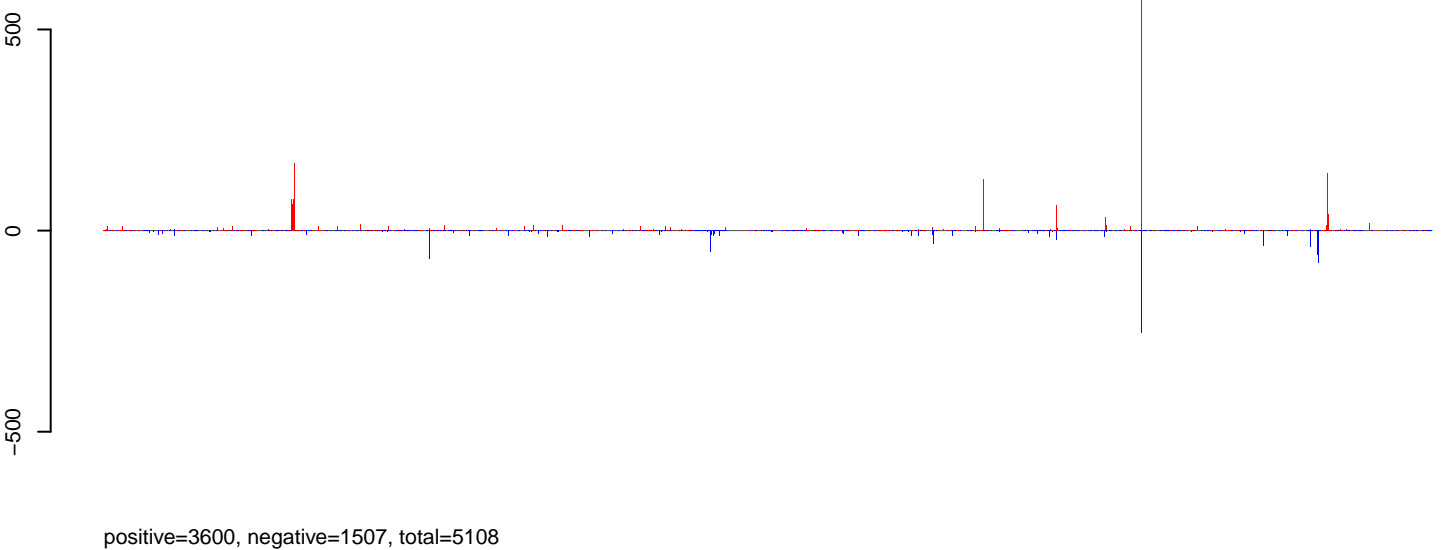
Window size=50, length=1267782, Wolbachia@Wolbachia\_wMel:1-1267782

0 200000 400000 600000 800000 1000000 1200000

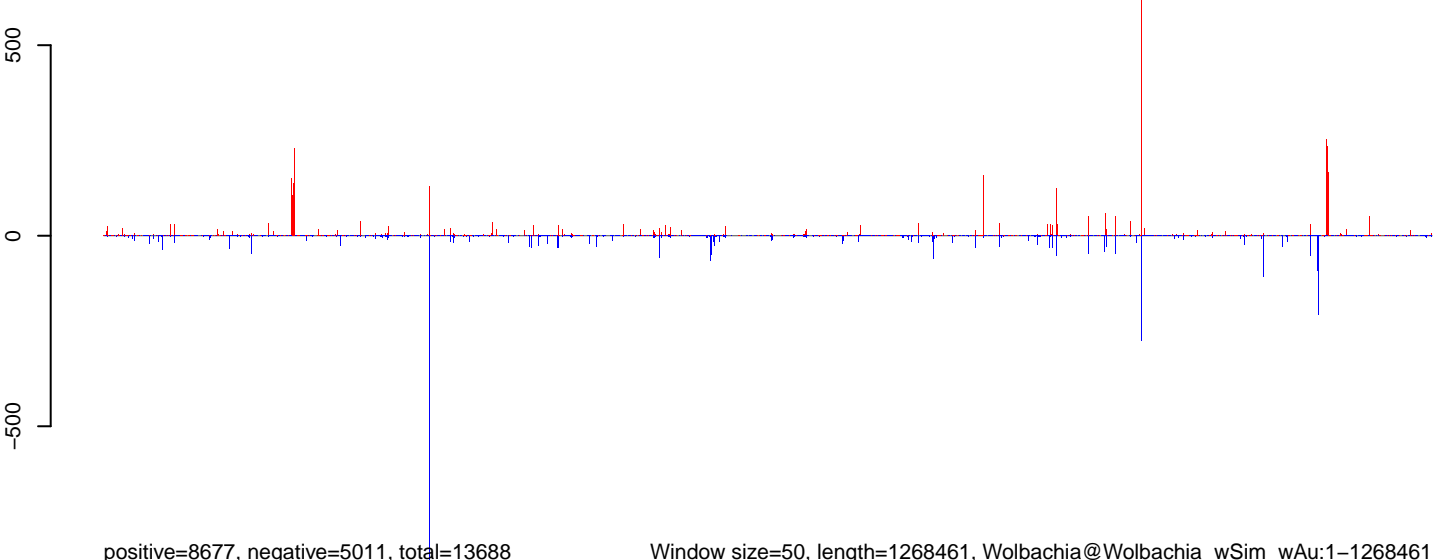
**AeAlbo\_C636\_cells.18\_23.rep**



**AeAlbo\_C636\_cells.24\_35.rep**



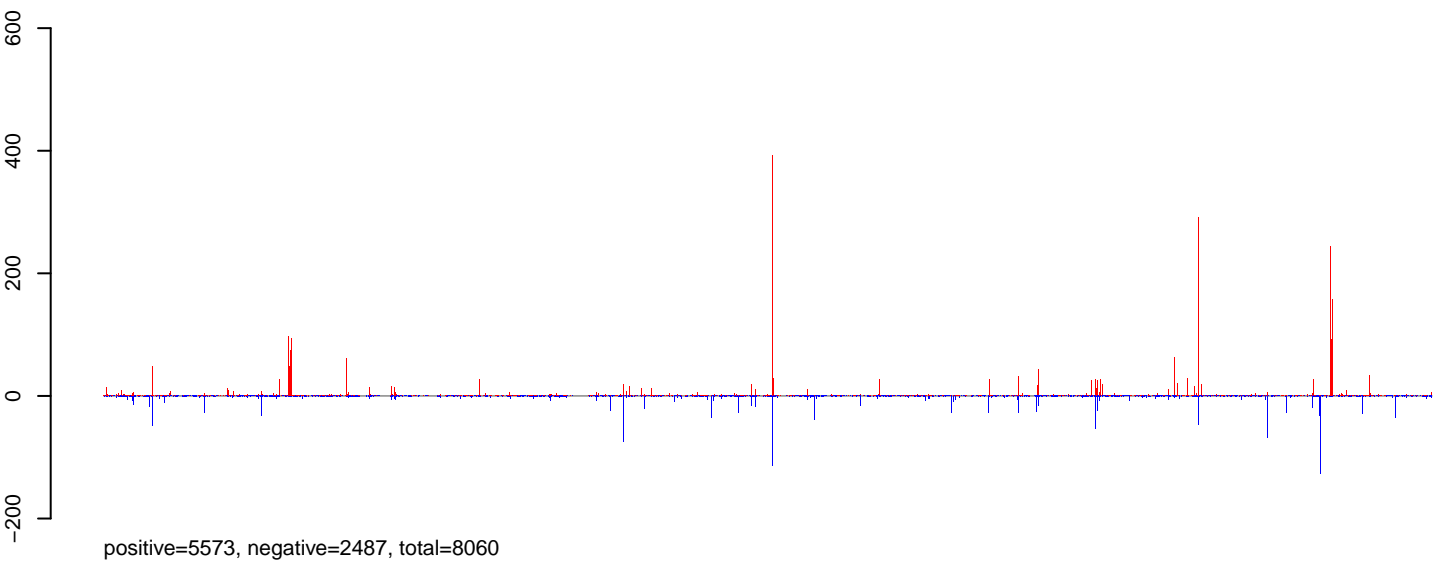
**AeAlbo\_C636\_cells.rep**



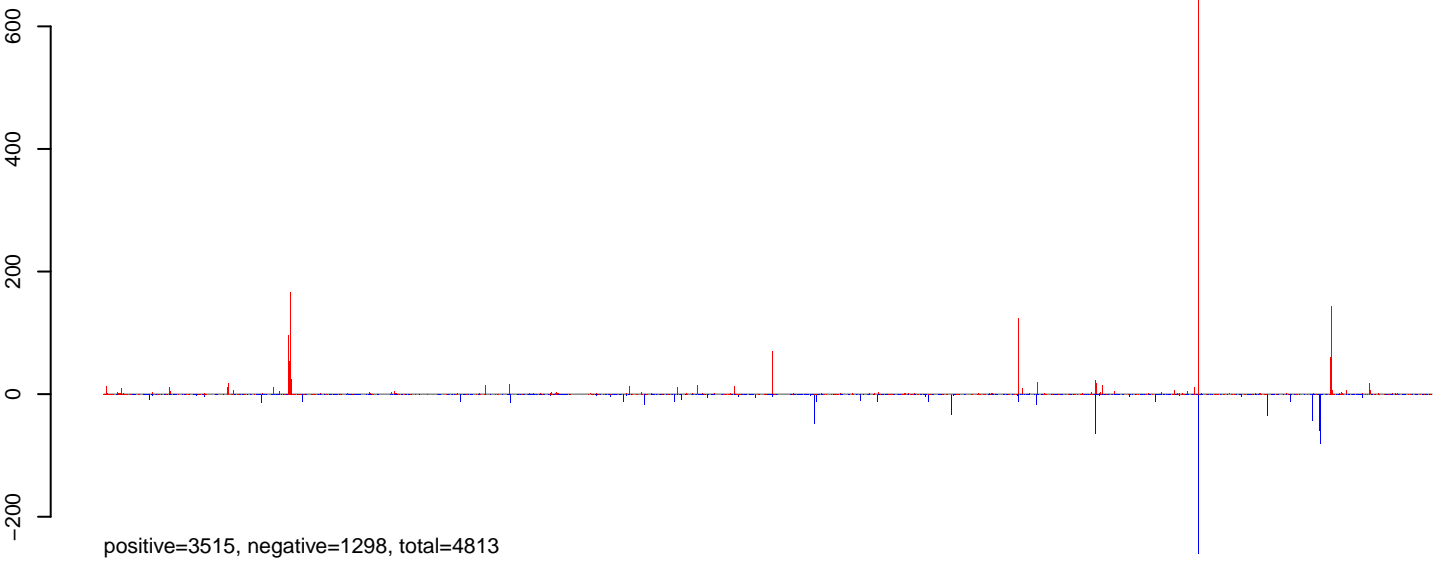
Window size=50, length=1268461, Wolbachia@Wolbachia\_wSim\_wAu:1-1268461

0 200000 400000 600000 800000 1000000 1200000

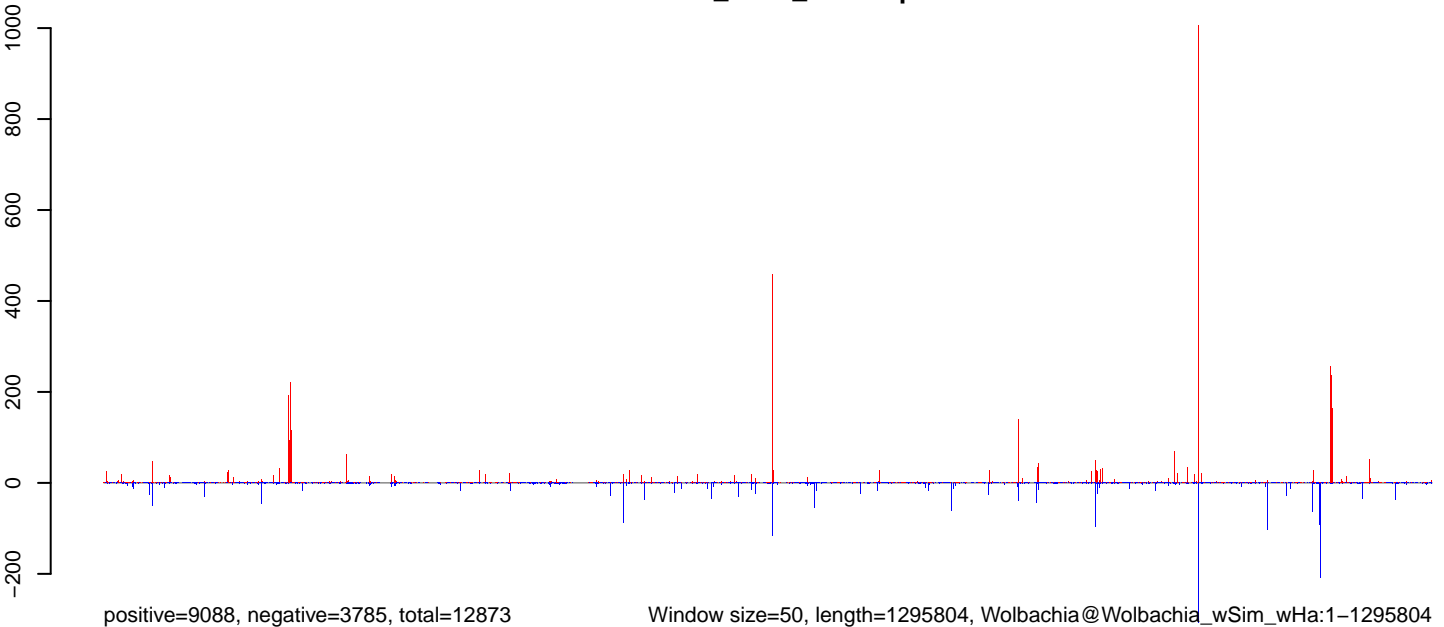
**AeAlbo\_C636\_cells.18\_23.rep**



**AeAlbo\_C636\_cells.24\_35.rep**



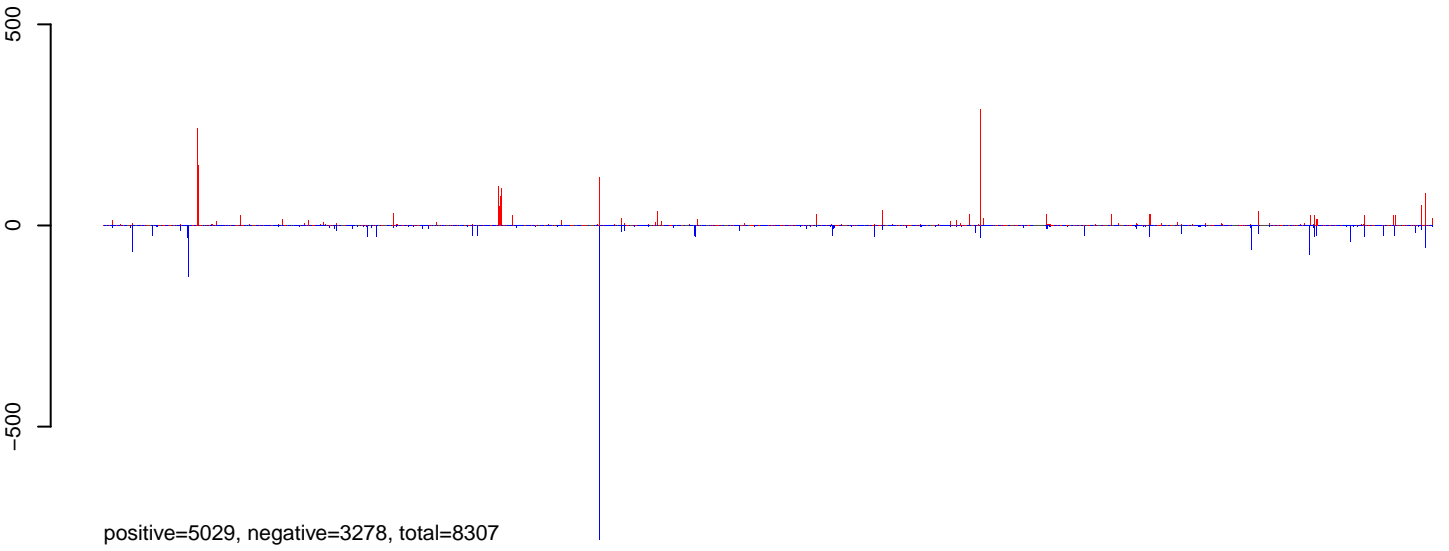
**AeAlbo\_C636\_cells.rep**



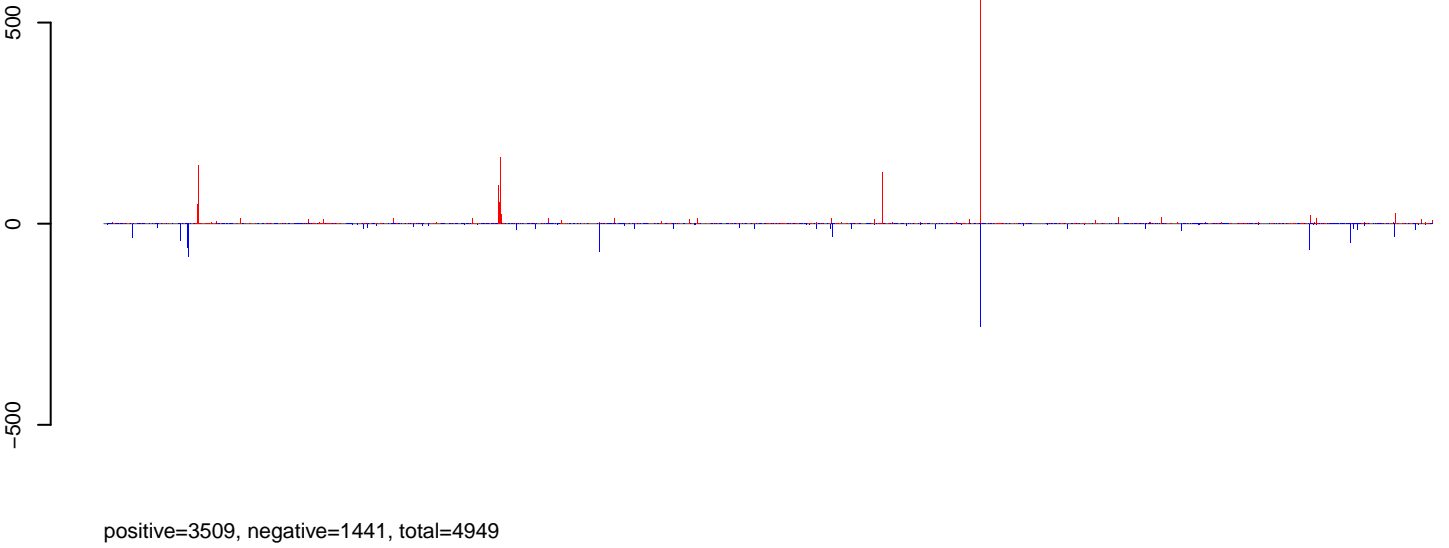
Window size=50, length=1295804, Wolbachia@Wolbachia\_wSim\_wHa:1-1295804

0 200000 400000 600000 800000 1000000 1200000

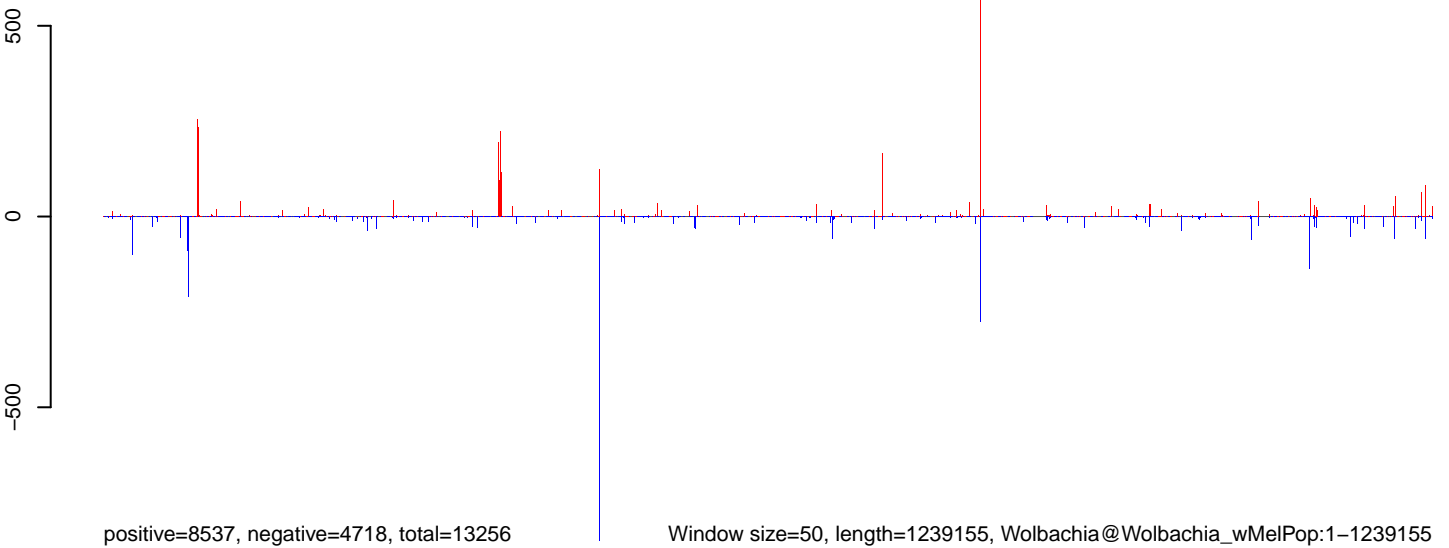
### AeAlbo\_C636\_cells.18\_23.rep



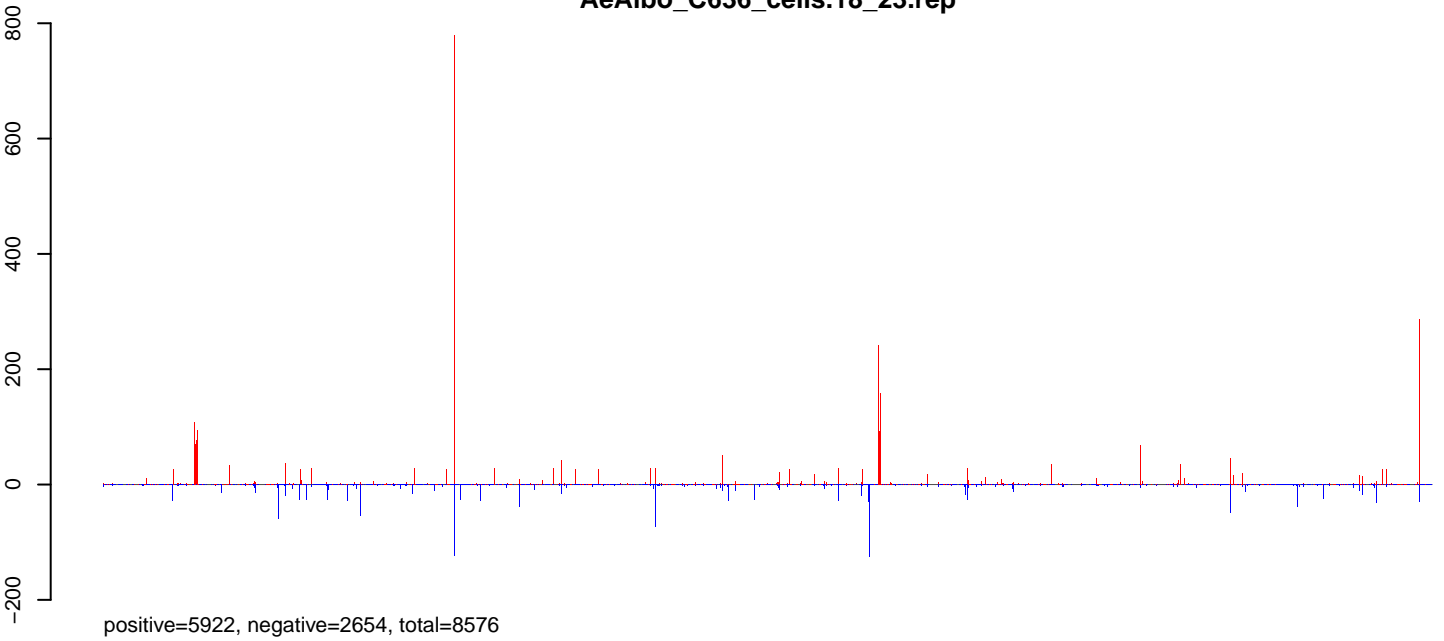
### AeAlbo\_C636\_cells.24\_35.rep



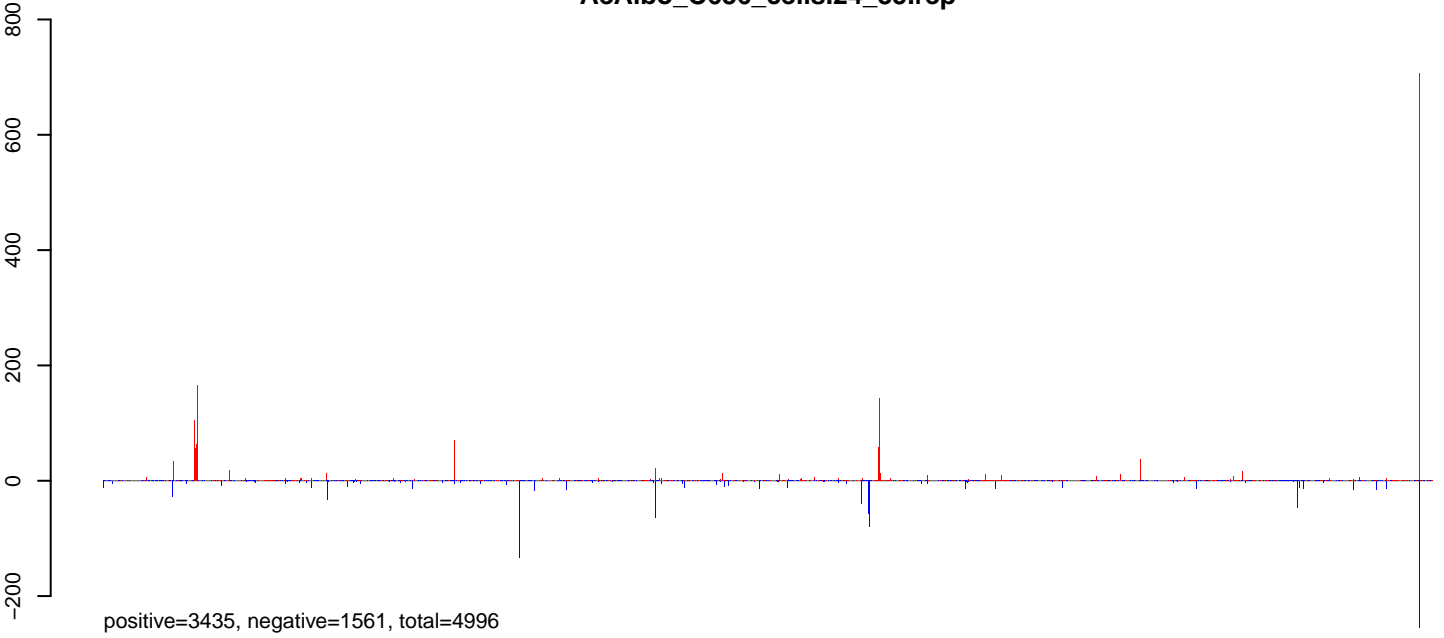
### AeAlbo\_C636\_cells.rep



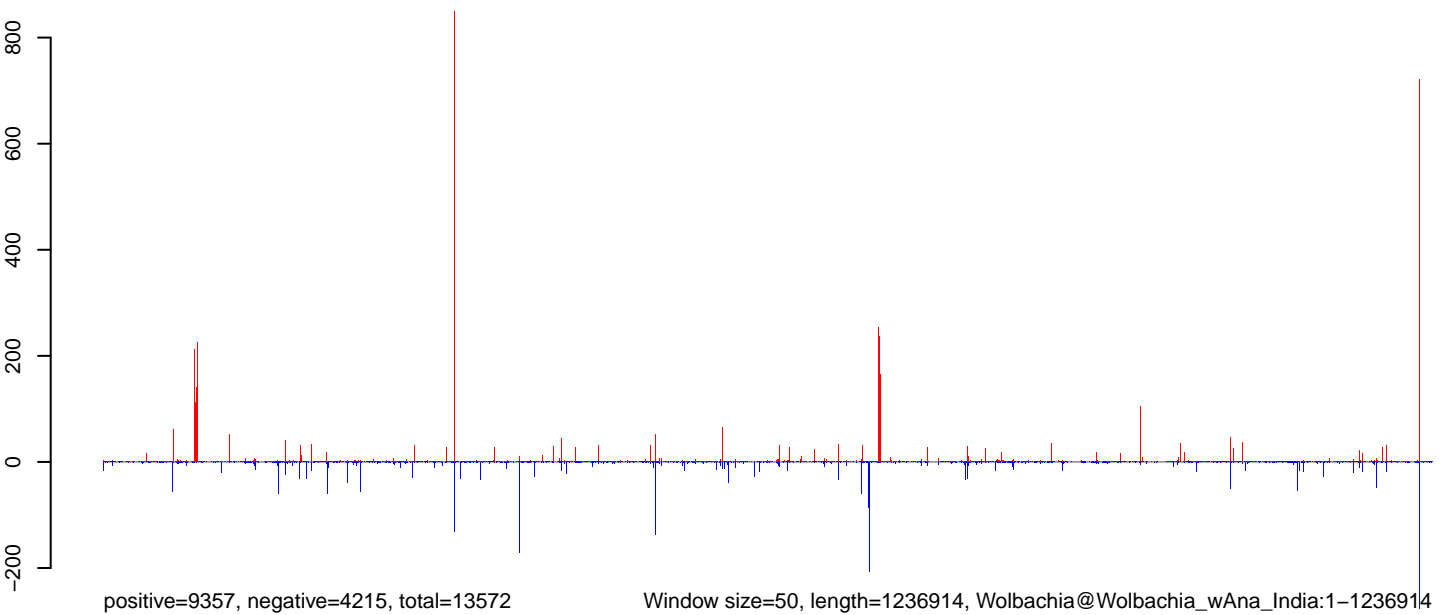
**AeAlbo\_C636\_cells.18\_23.rep**



**AeAlbo\_C636\_cells.24\_35.rep**

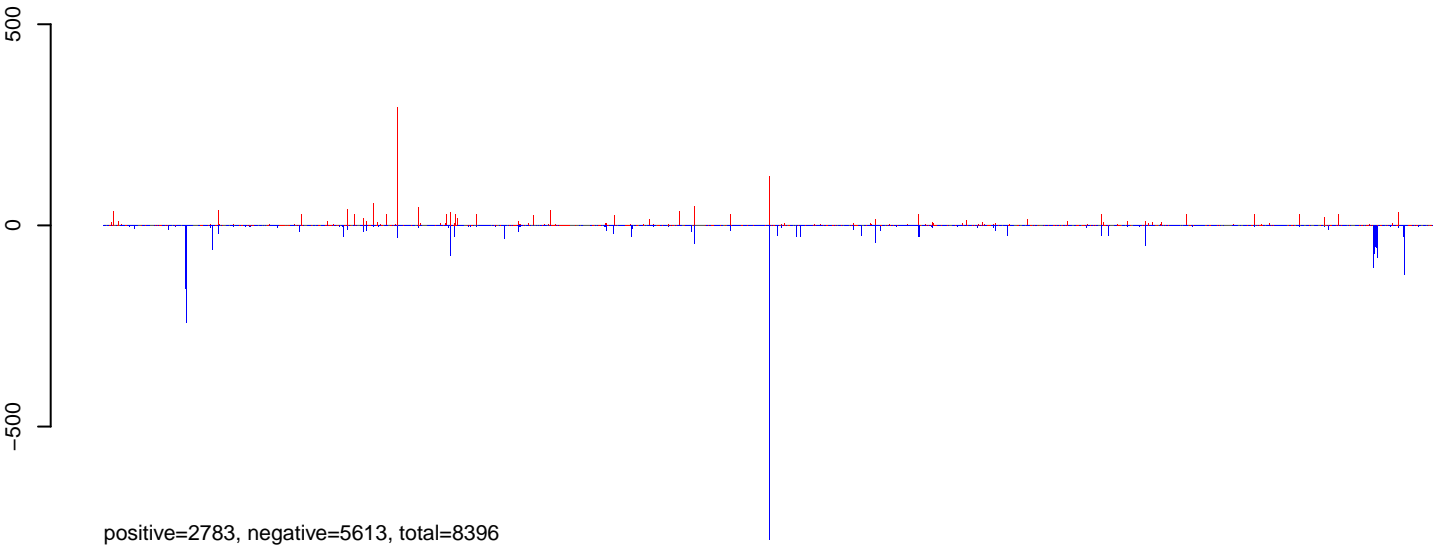


**AeAlbo\_C636\_cells.rep**

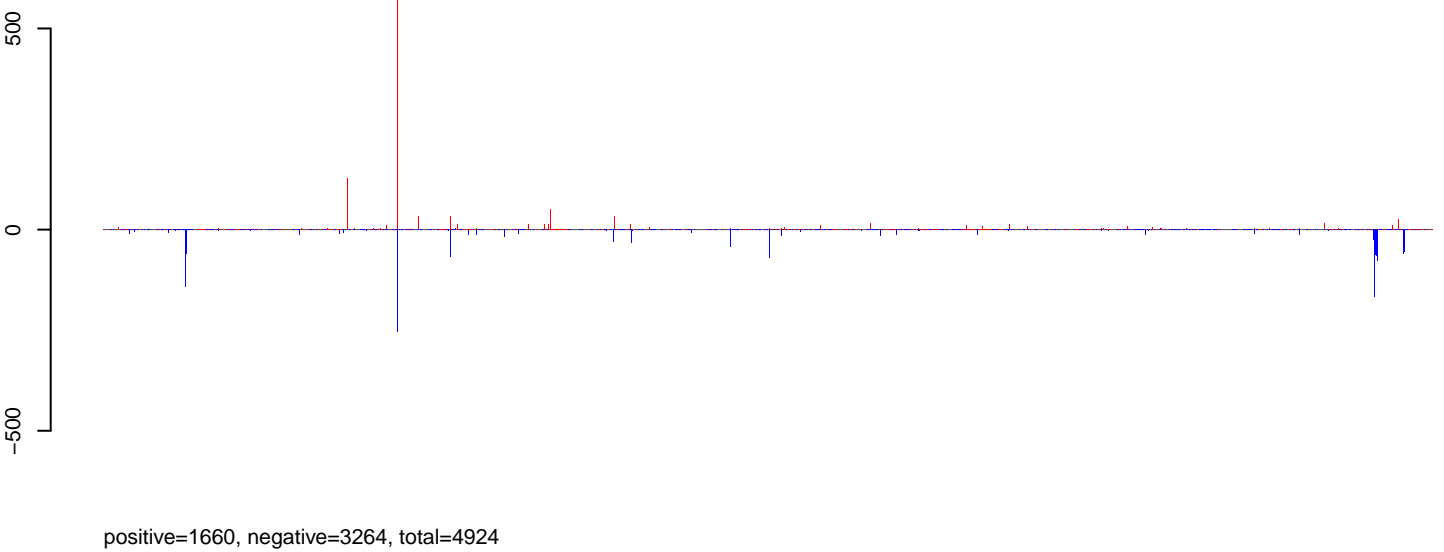


0 200000 400000 600000 800000 1000000 1200000

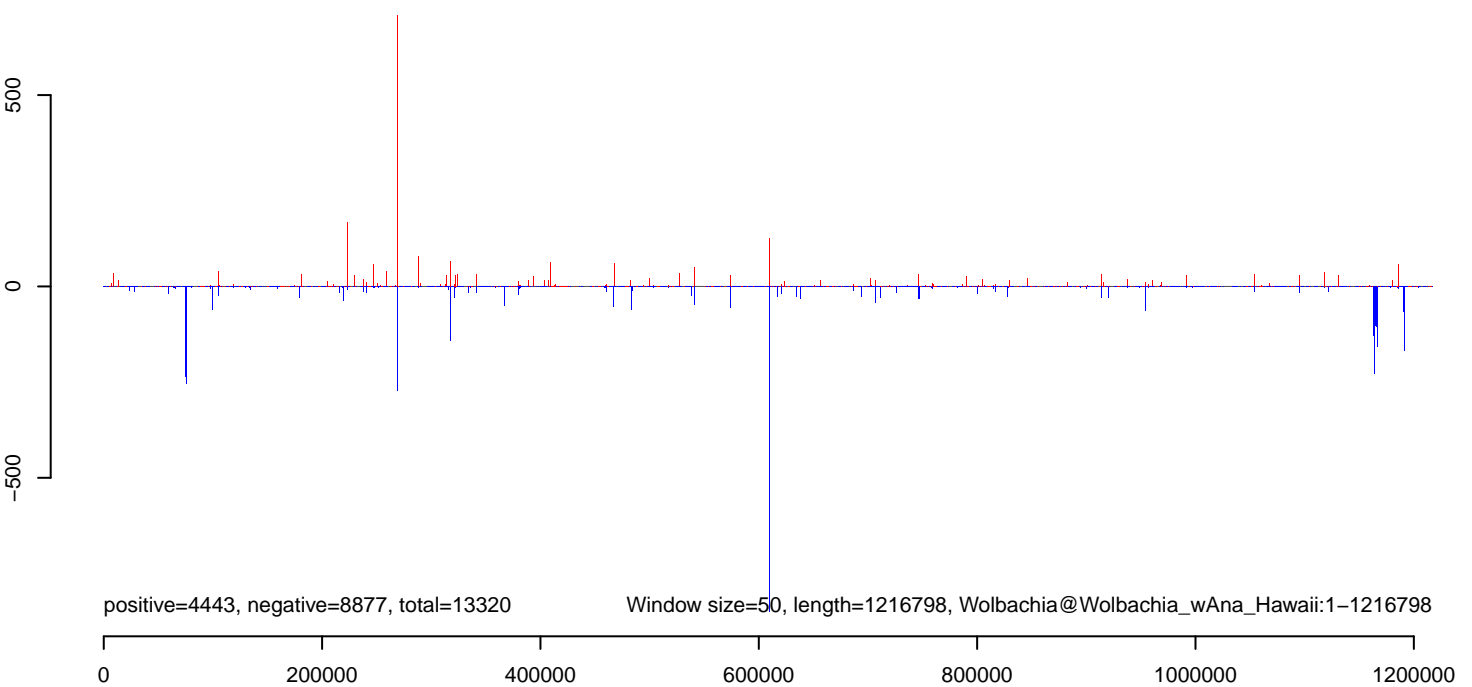
### AeAlbo\_C636\_cells.18\_23.rep



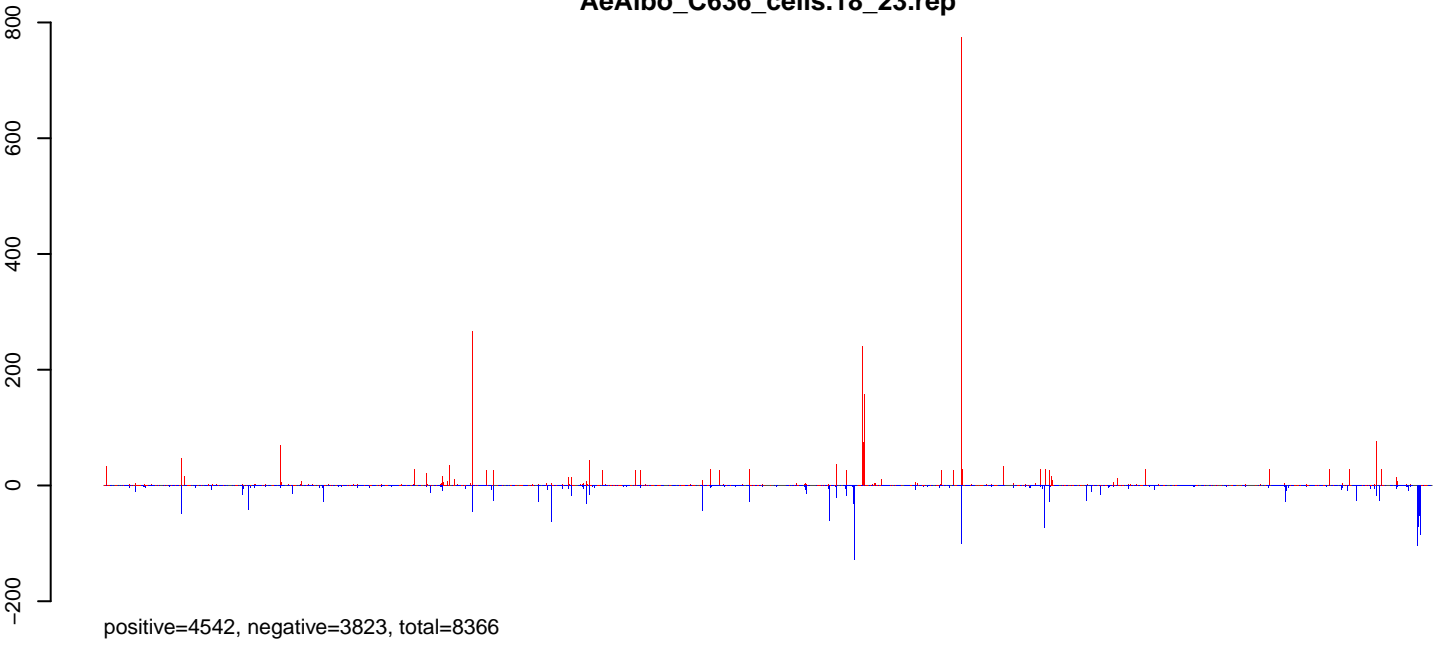
### AeAlbo\_C636\_cells.24\_35.rep



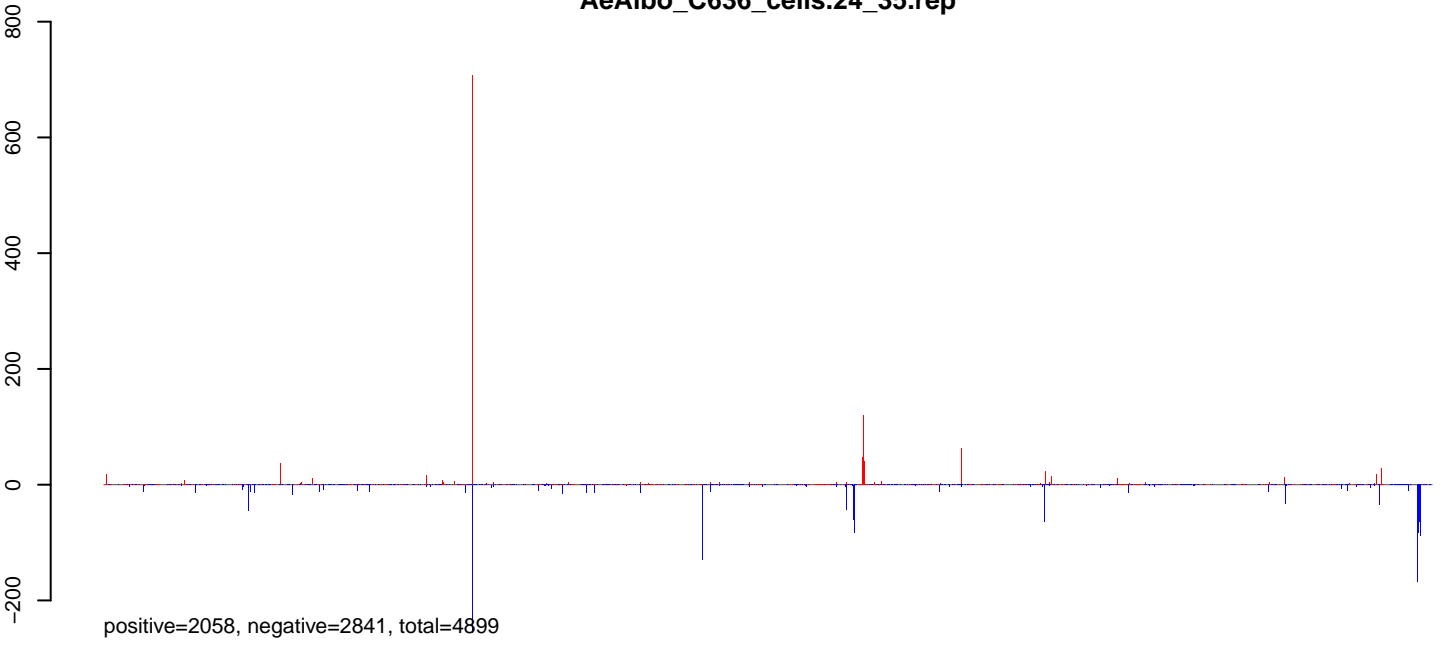
### AeAlbo\_C636\_cells.rep



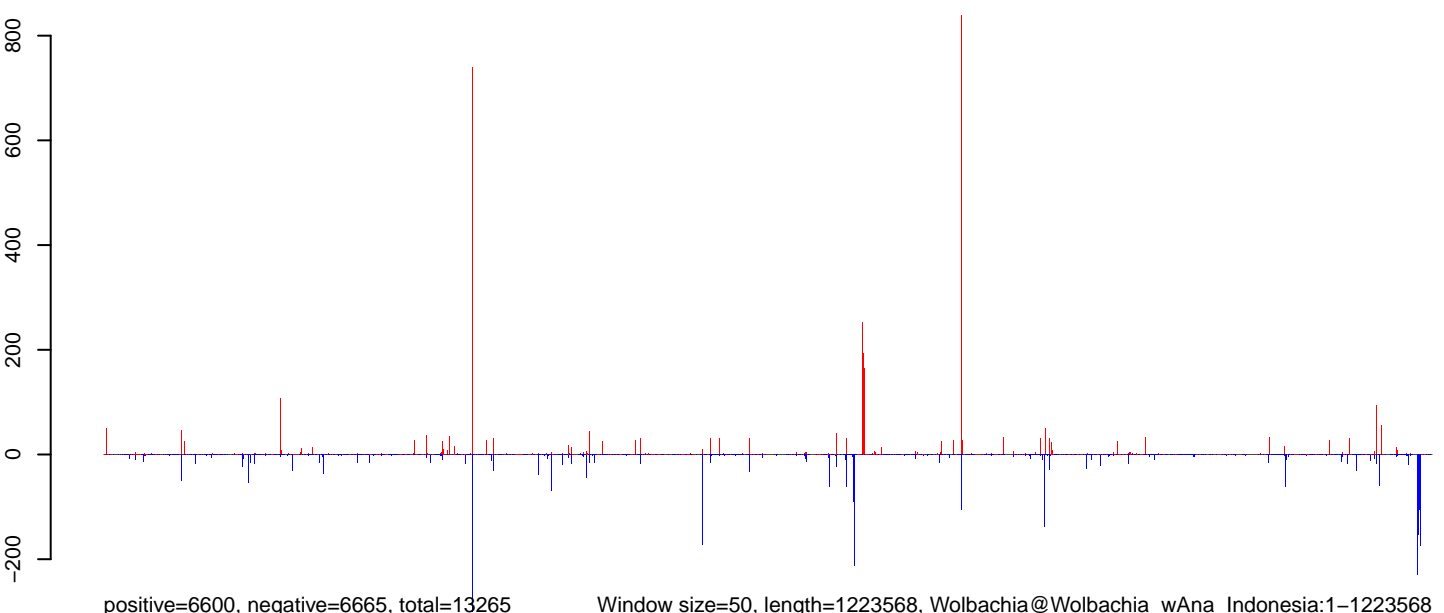
**AeAlbo\_C636\_cells.18\_23.rep**



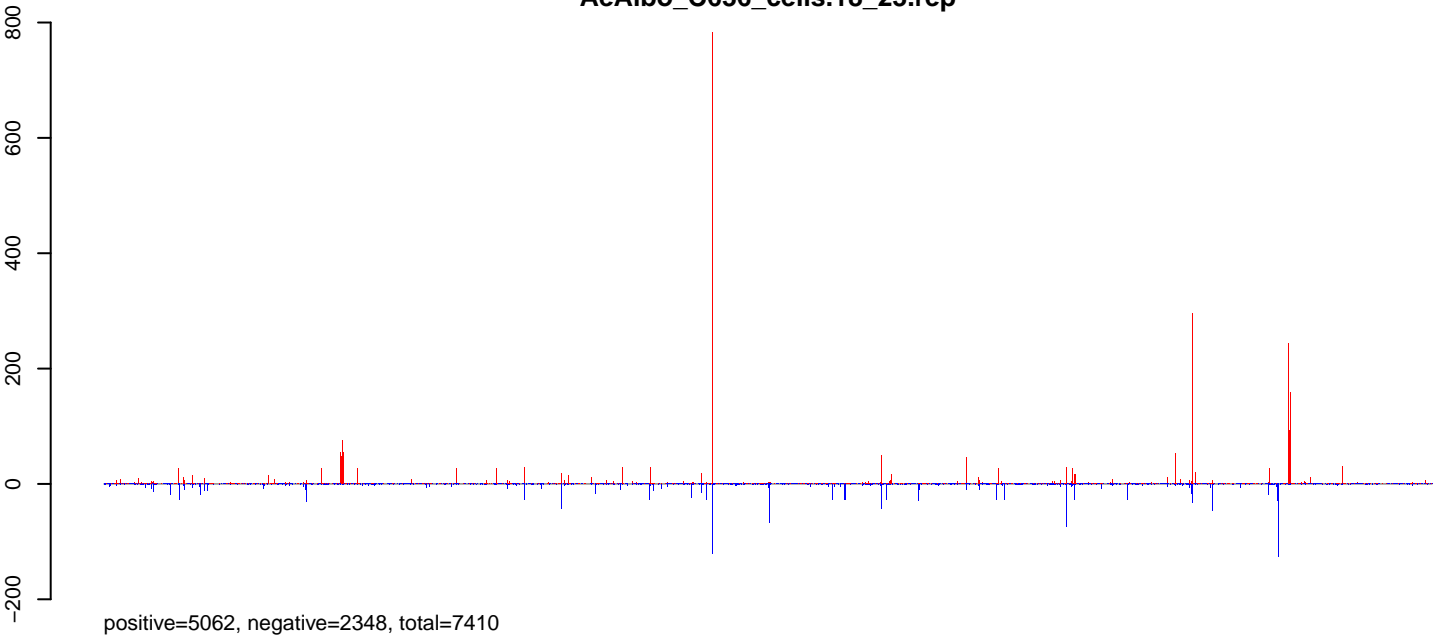
**AeAlbo\_C636\_cells.24\_35.rep**



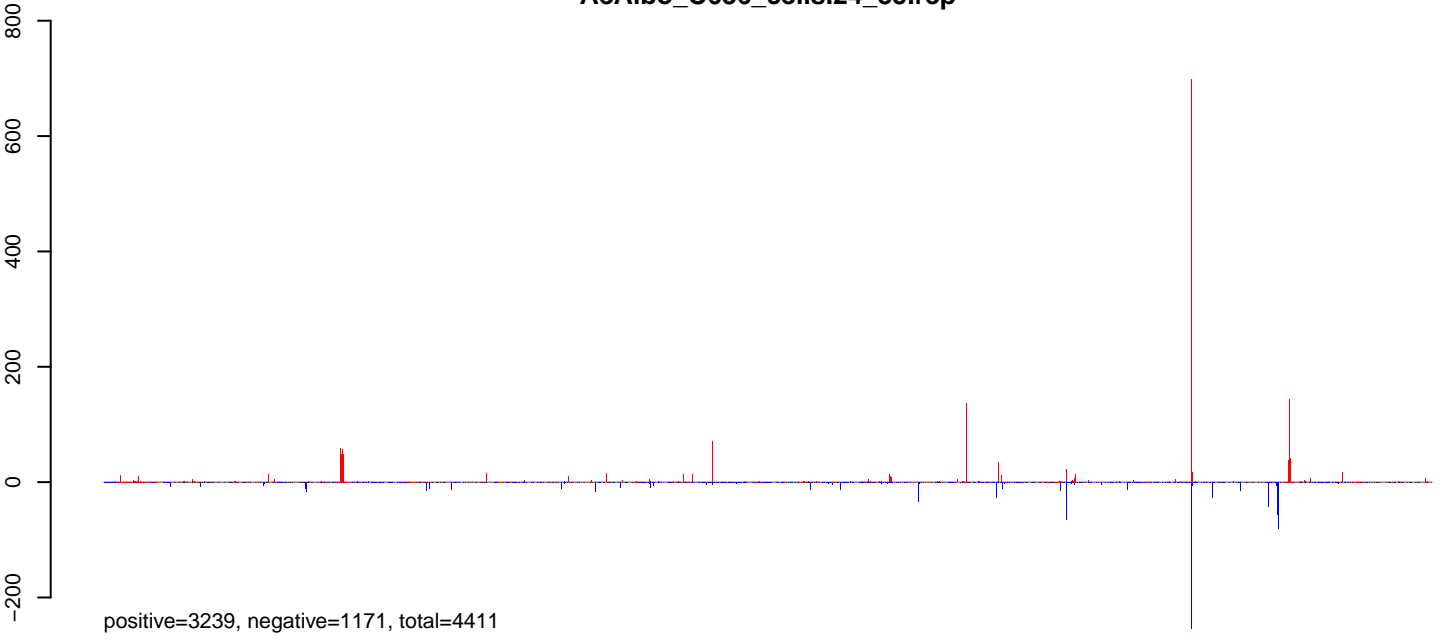
**AeAlbo\_C636\_cells.rep**



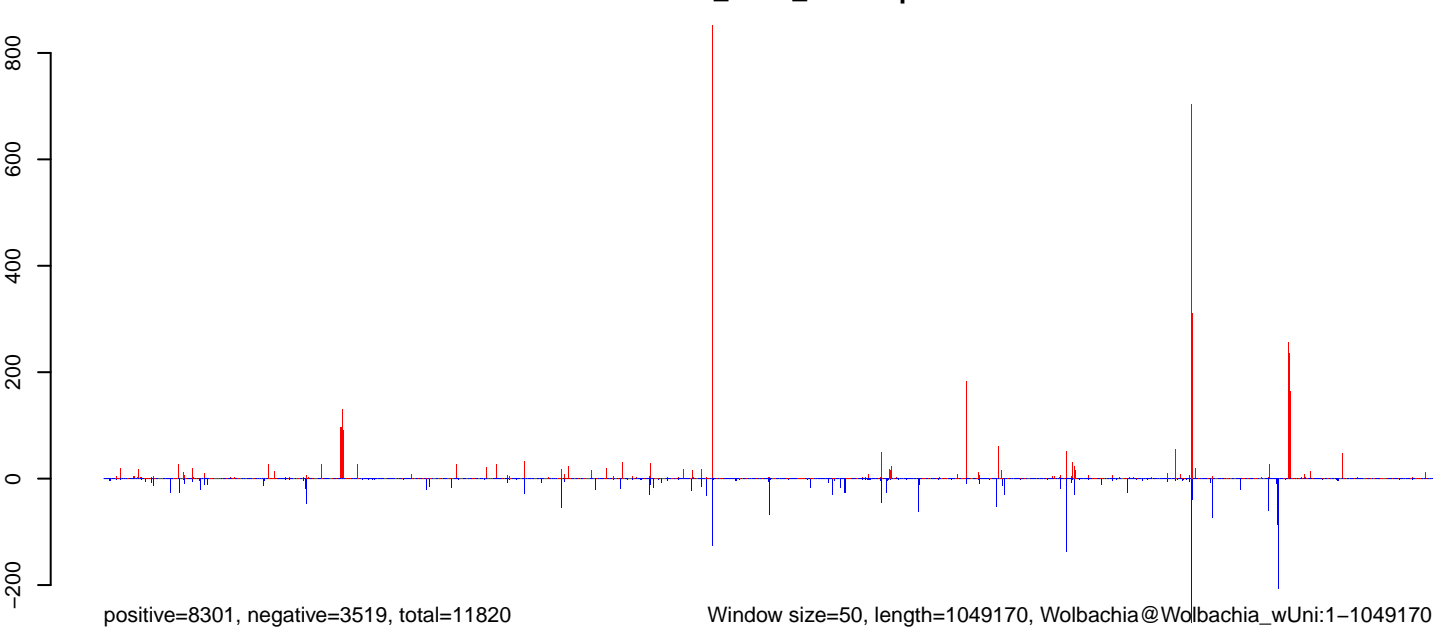
**AeAlbo\_C636\_cells.18\_23.rep**



**AeAlbo\_C636\_cells.24\_35.rep**



**AeAlbo\_C636\_cells.rep**

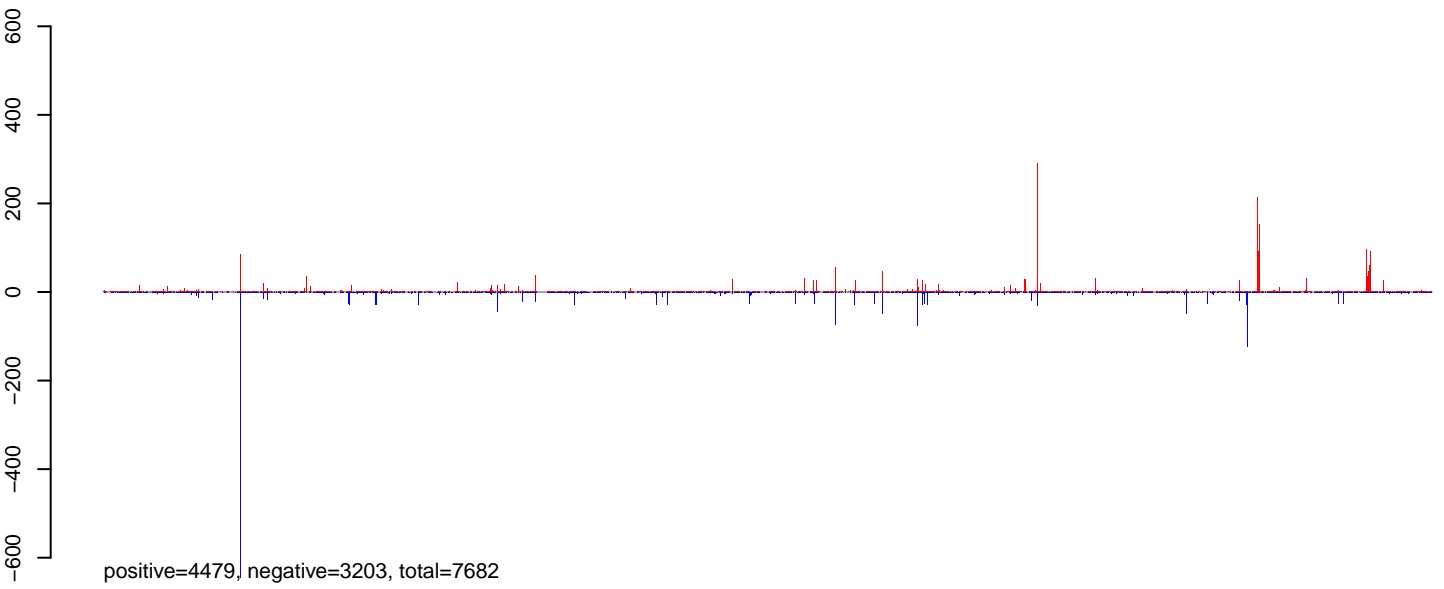


Window size=50, length=1049170, Wolbachia@Wolbachia\_wUni:1-1049170

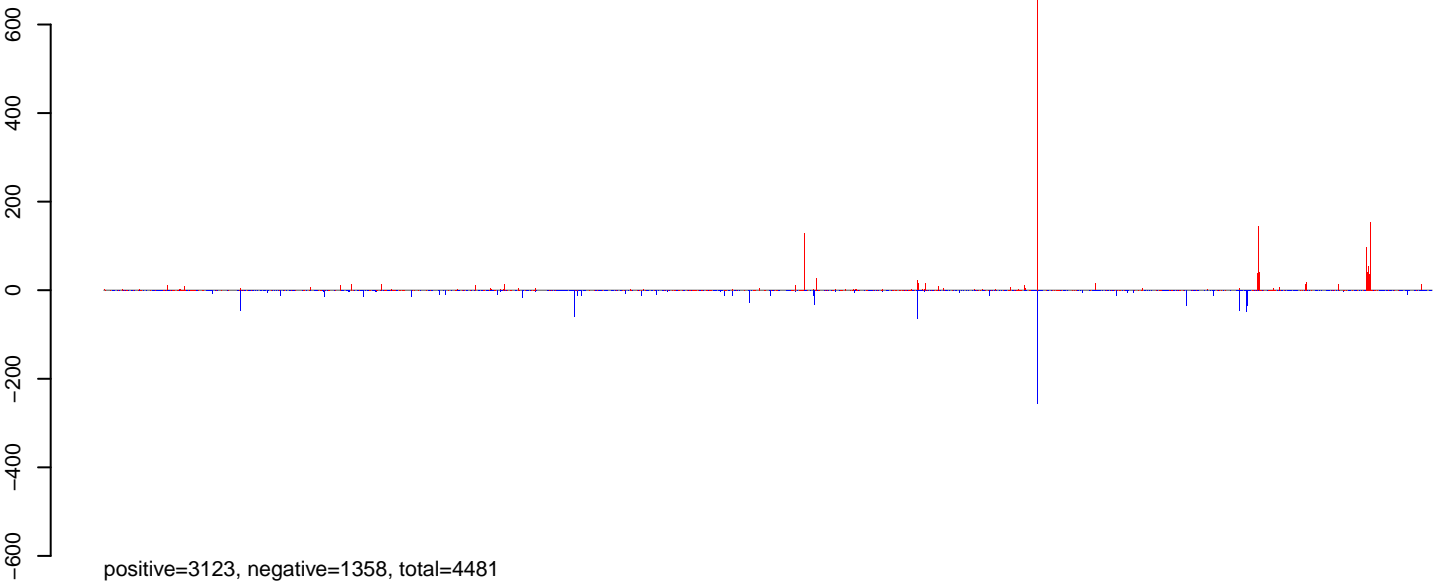
0e+00 2e+05 4e+05 6e+05 8e+05 1e+06



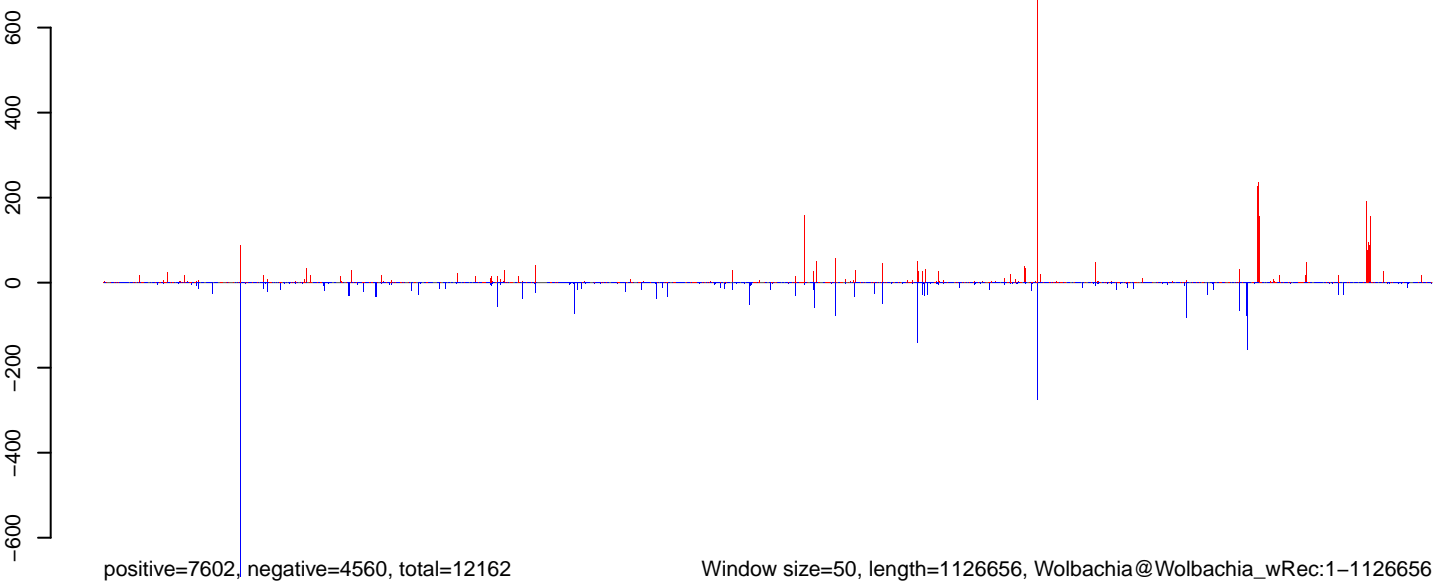
### AeAlbo\_C636\_cells.18\_23.rep



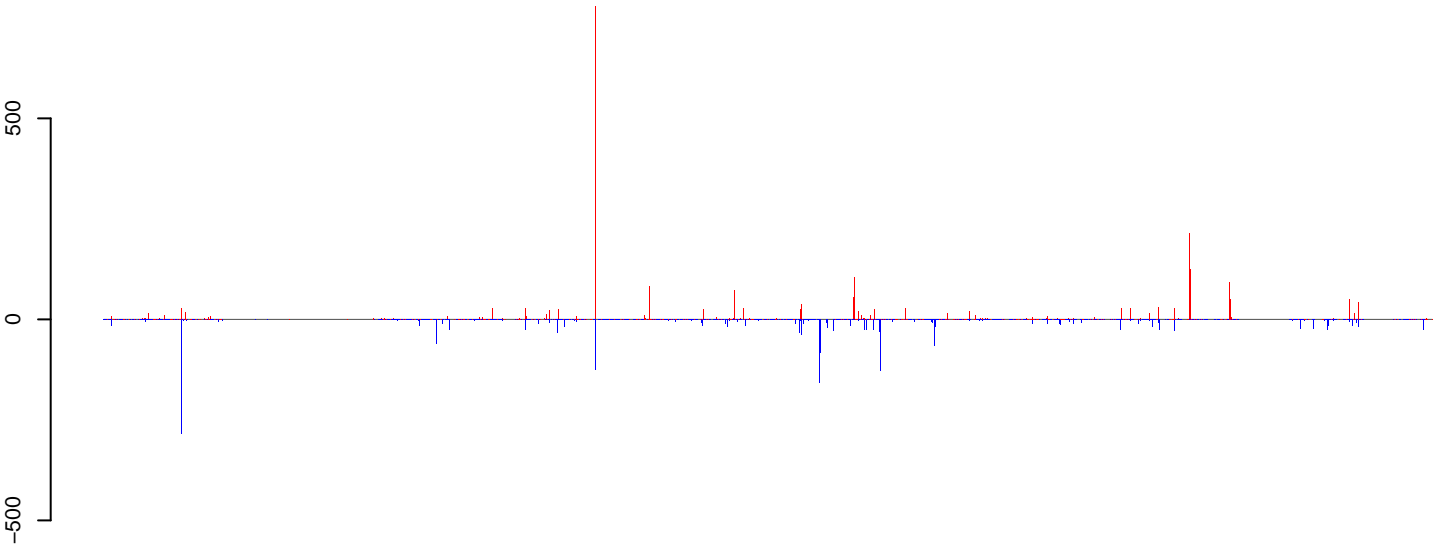
### AeAlbo\_C636\_cells.24\_35.rep



### AeAlbo\_C636\_cells.rep

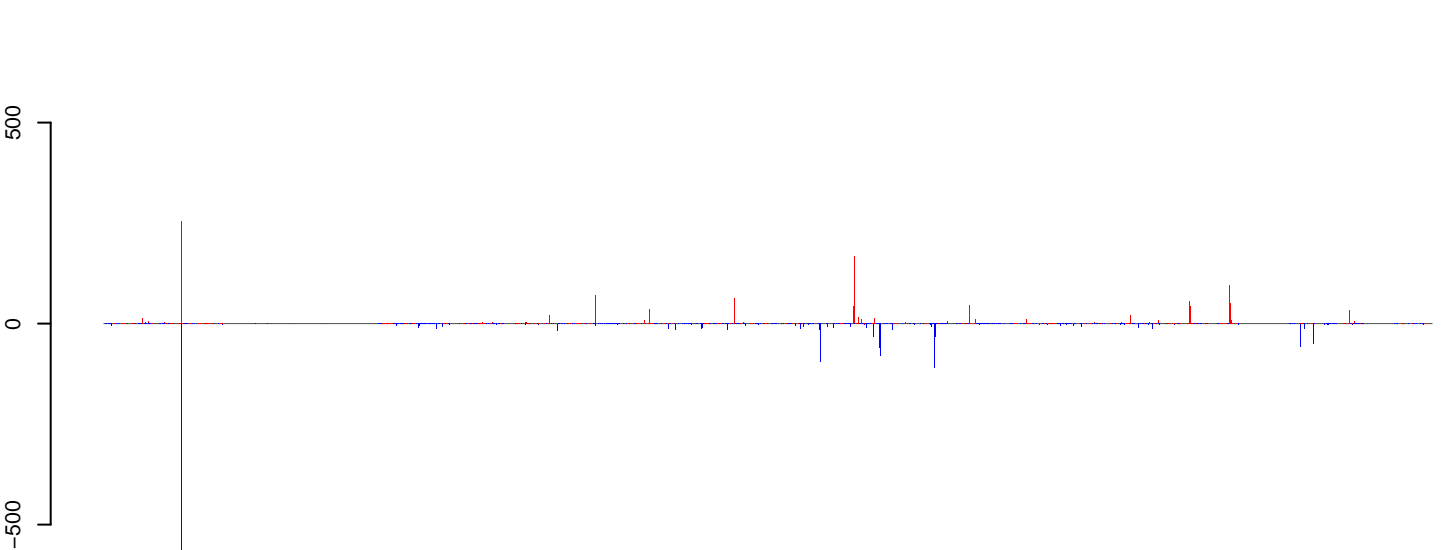


**AeAlbo\_C636\_cells.18\_23.rep**



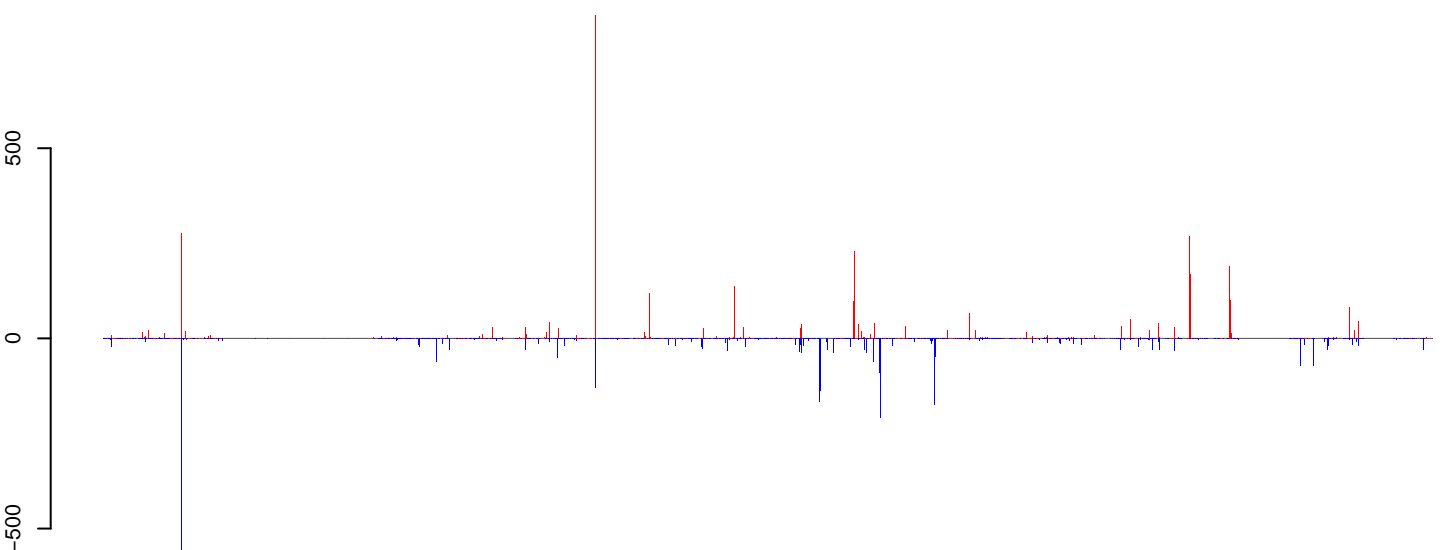
positive=4082, negative=3238, total=7321

**AeAlbo\_C636\_cells.24\_35.rep**



positive=2015, negative=2164, total=4179

**AeAlbo\_C636\_cells.rep**

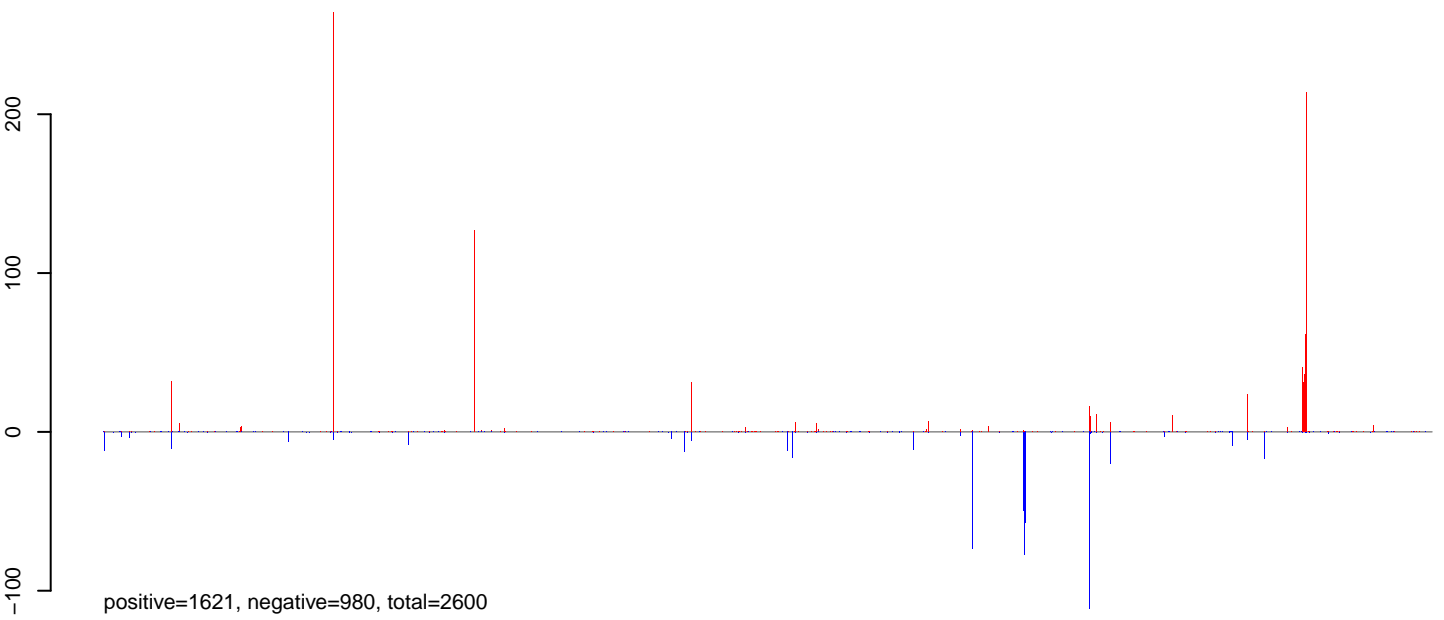


positive=6097, negative=5403, total=11500

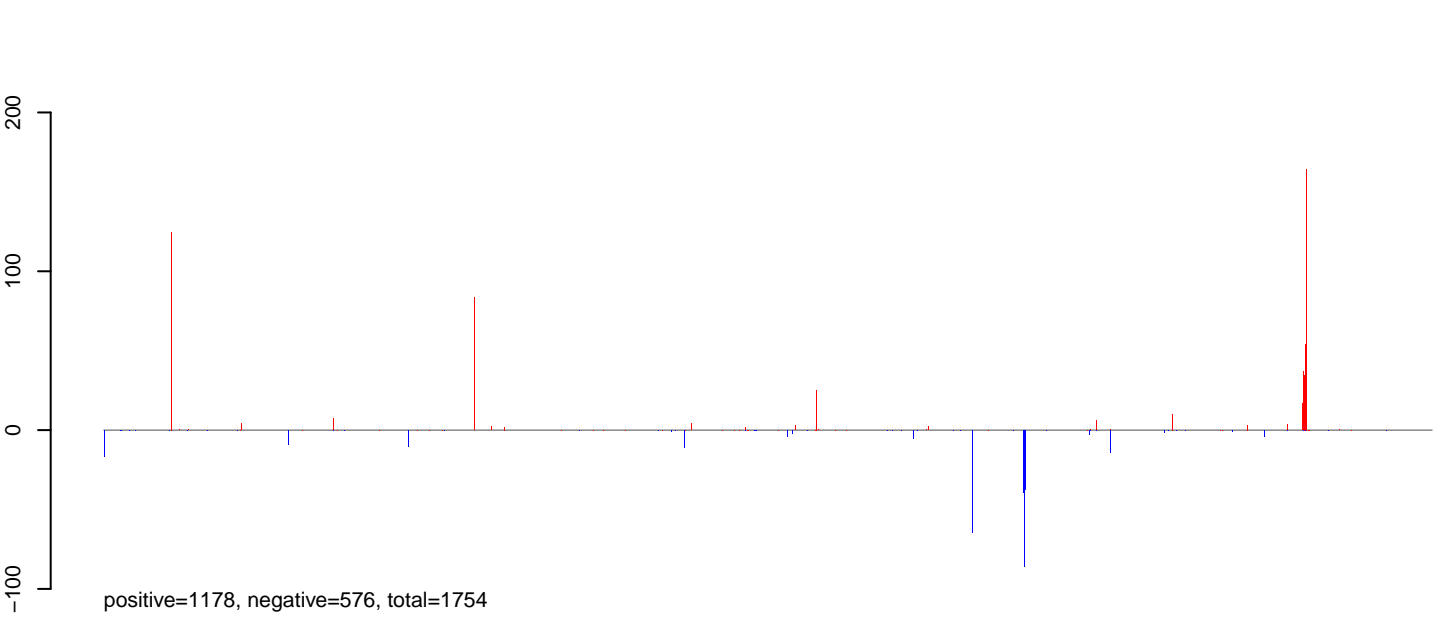
Window size=50, length=1320505, Wolbachia@Wolbachia\_HN2016:1-1320505

0 200000 400000 600000 800000 1000000 1200000

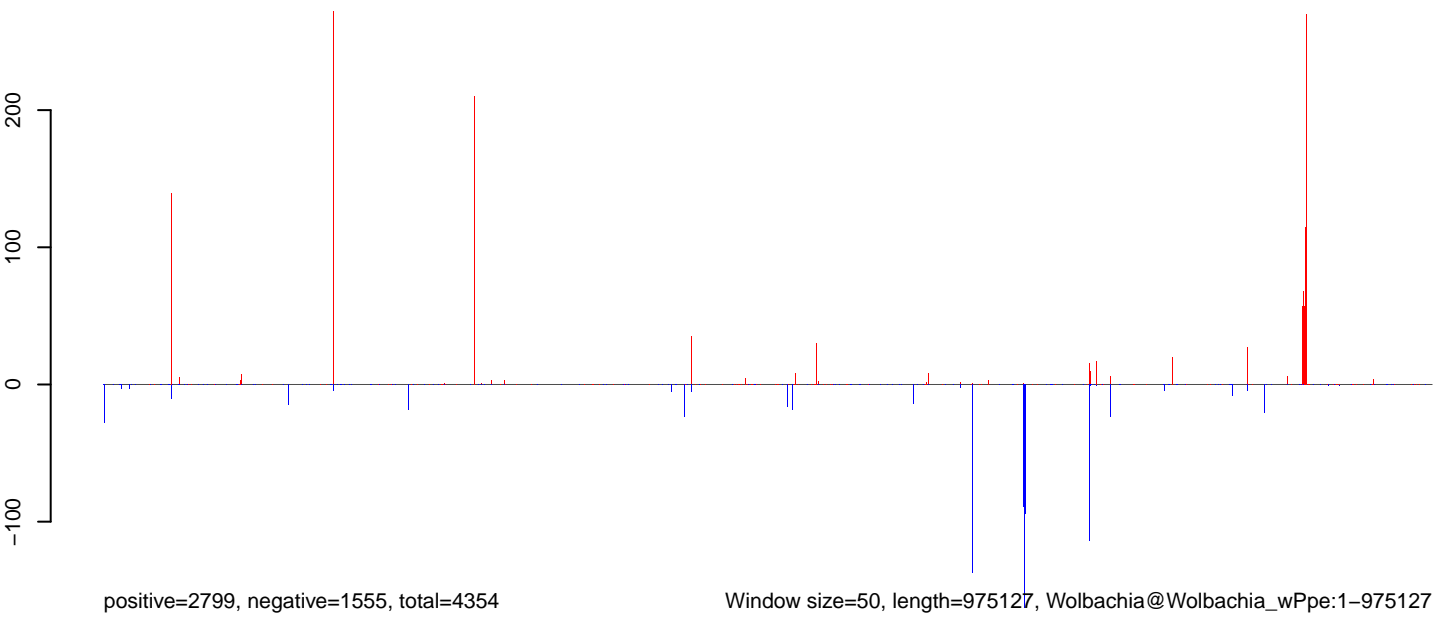
**AeAlbo\_C636\_cells.18\_23.rep**



**AeAlbo\_C636\_cells.24\_35.rep**



**AeAlbo\_C636\_cells.rep**



0e+00 2e+05 4e+05 6e+05 8e+05 1e+06