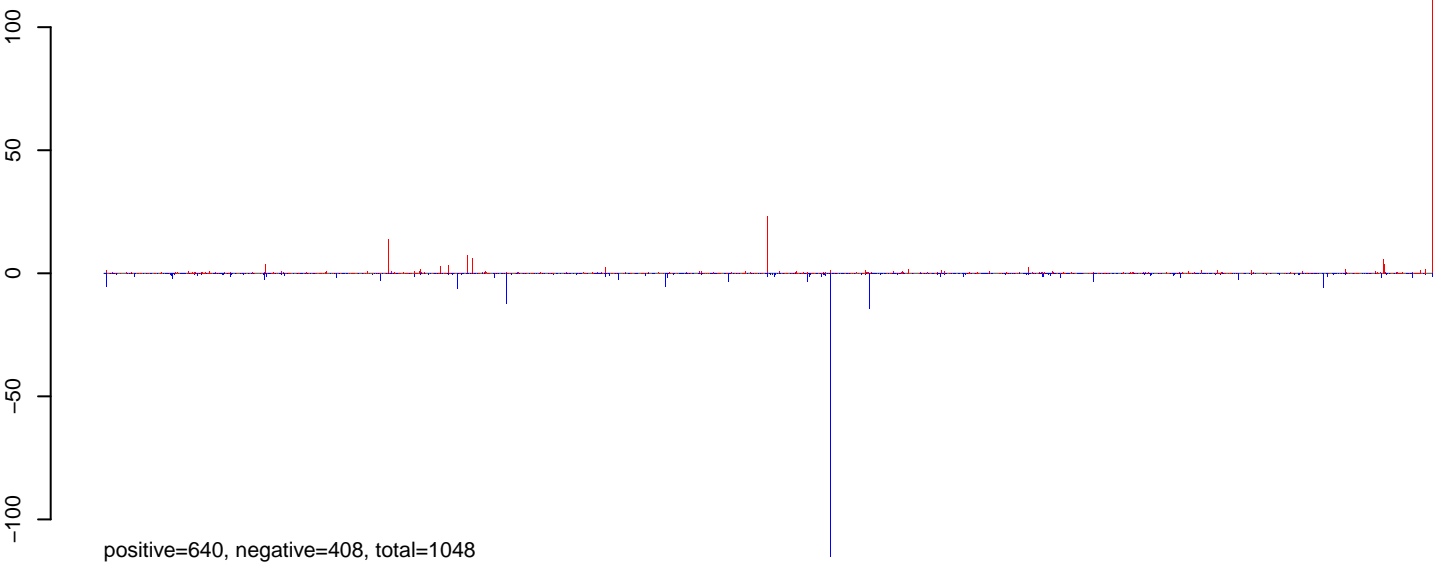
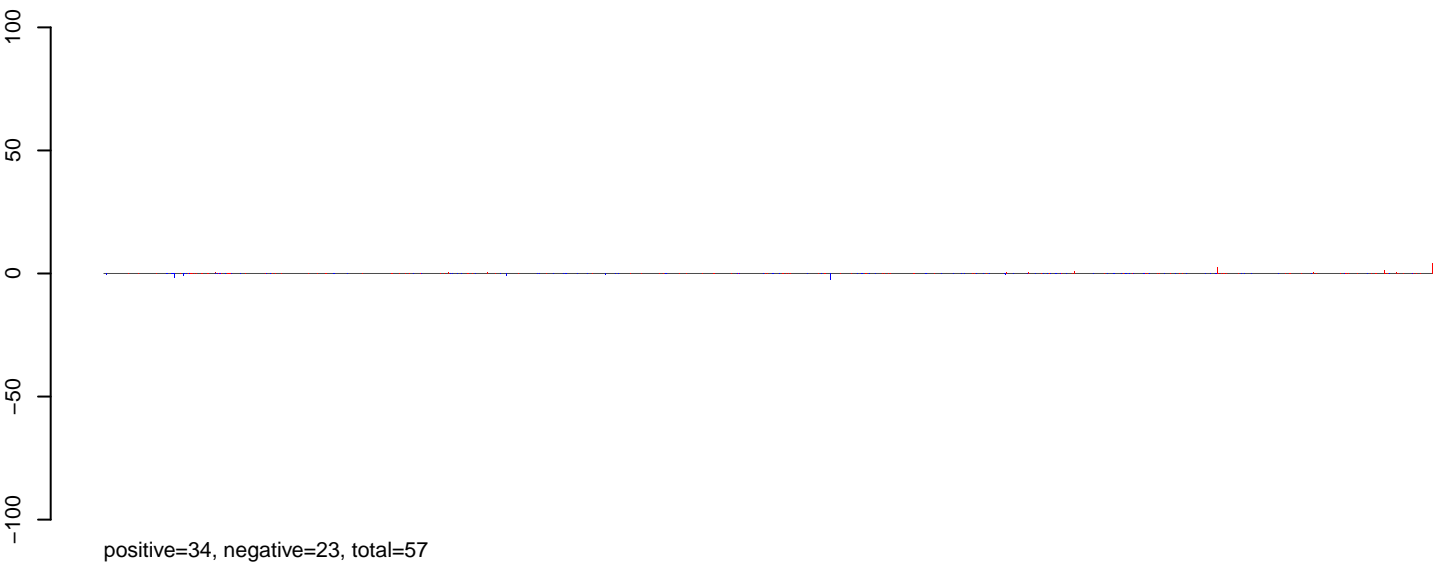


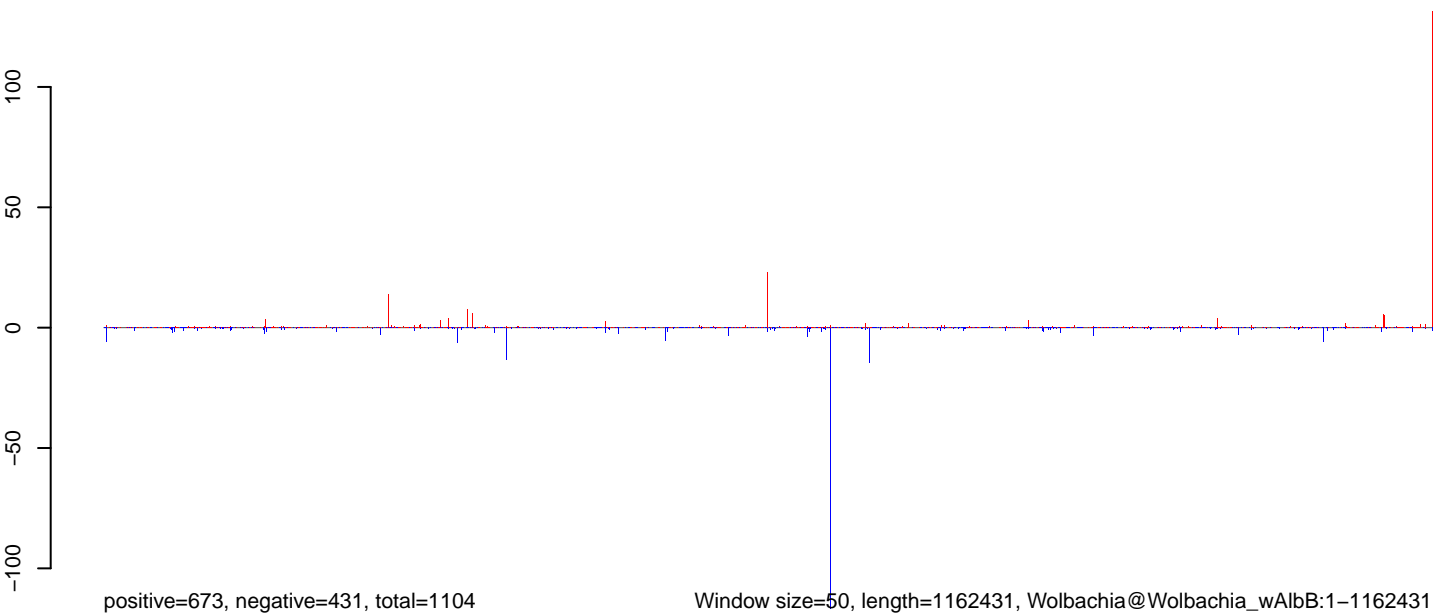
AeAlbo_FemaleWhole_BF_CT.18_23.rep



AeAlbo_FemaleWhole_BF_CT.24_35.rep



AeAlbo_FemaleWhole_BF_CT.rep

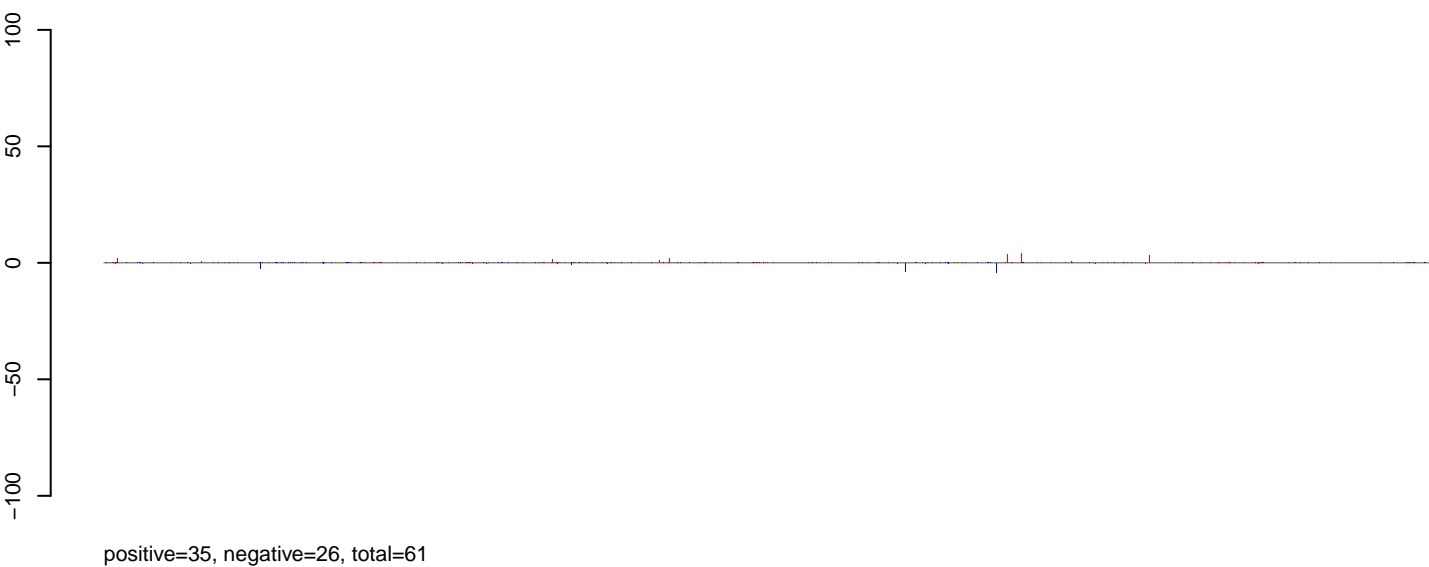


0 200000 400000 600000 800000 1000000 1200000

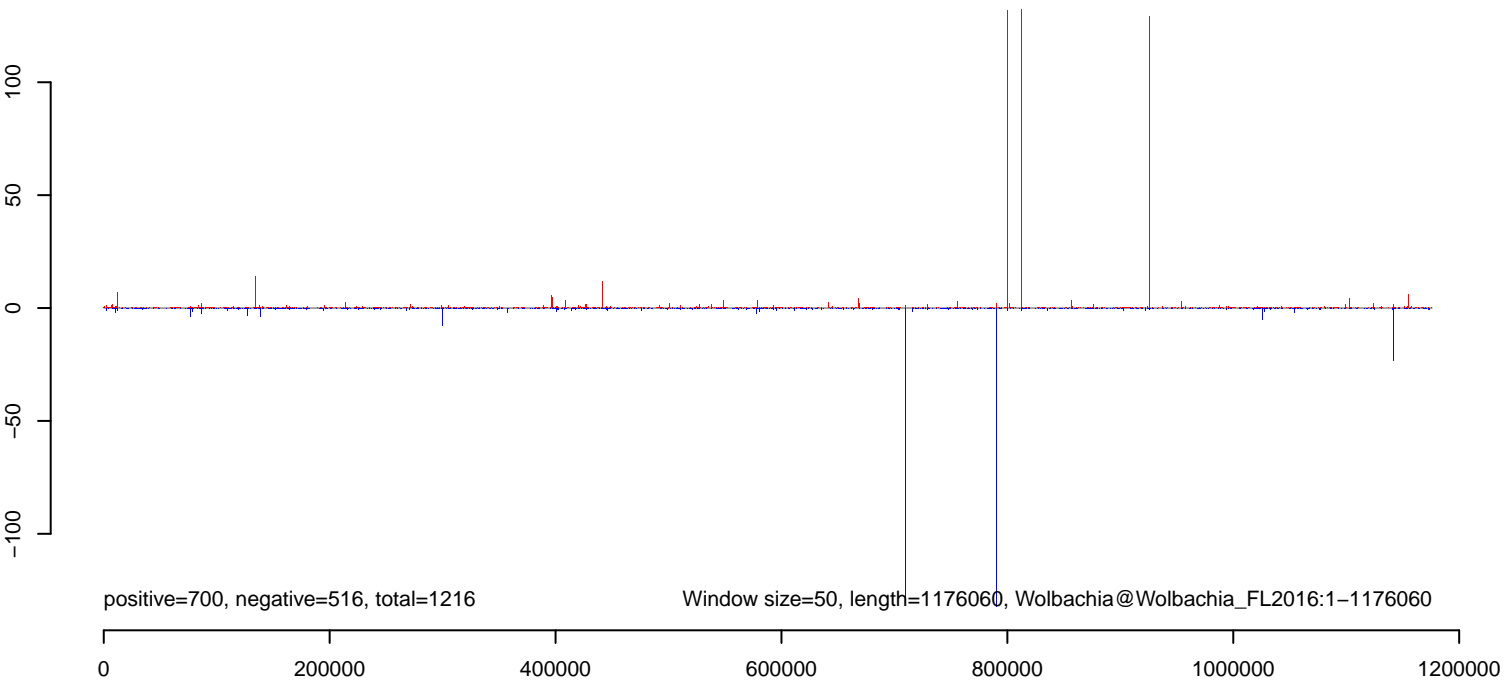
AeAlbo_FemaleWhole_BF_CT.18_23.rep



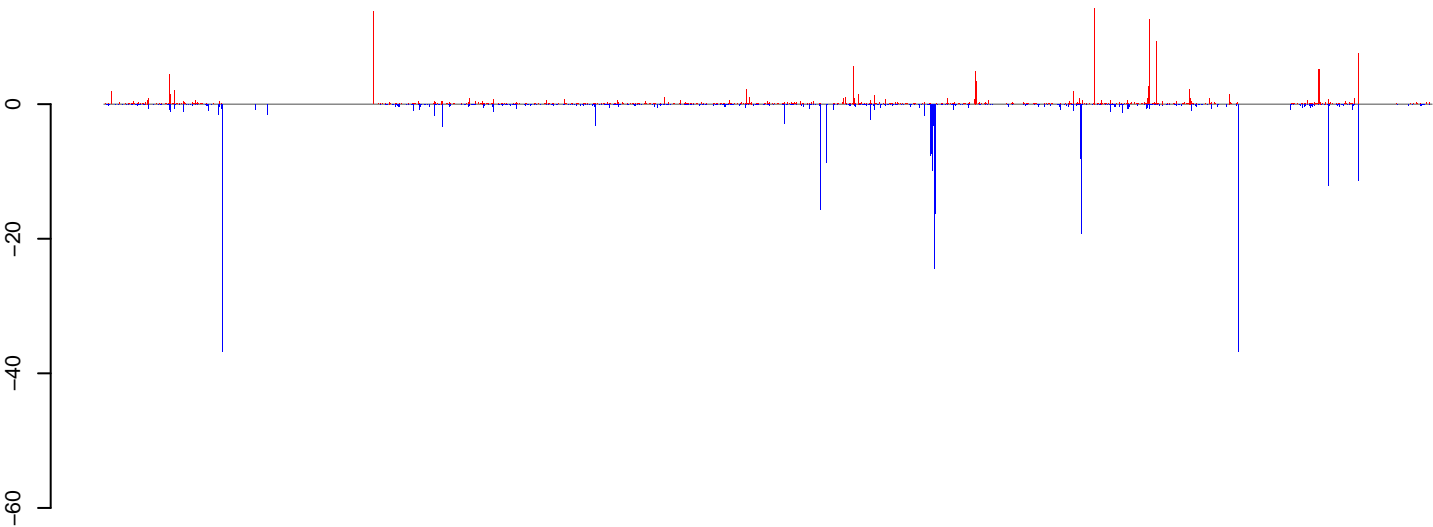
AeAlbo_FemaleWhole_BF_CT.24_35.rep



AeAlbo_FemaleWhole_BF_CT.rep

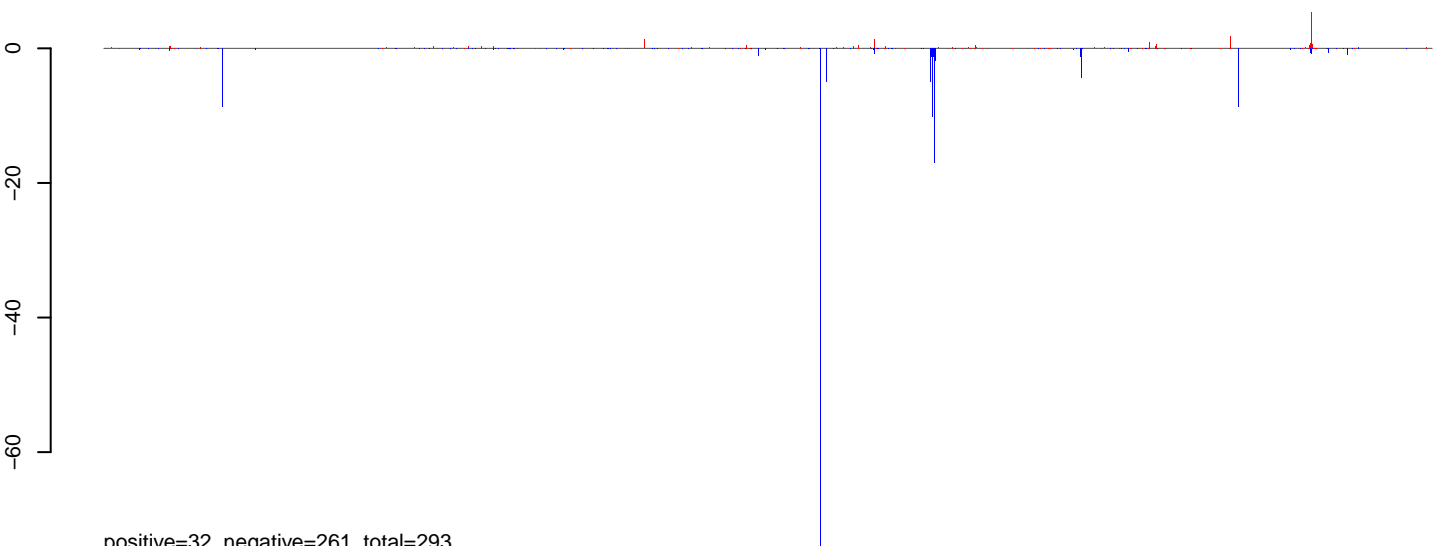


AeAlbo_FemaleWhole_BF_CT.18_23.rep



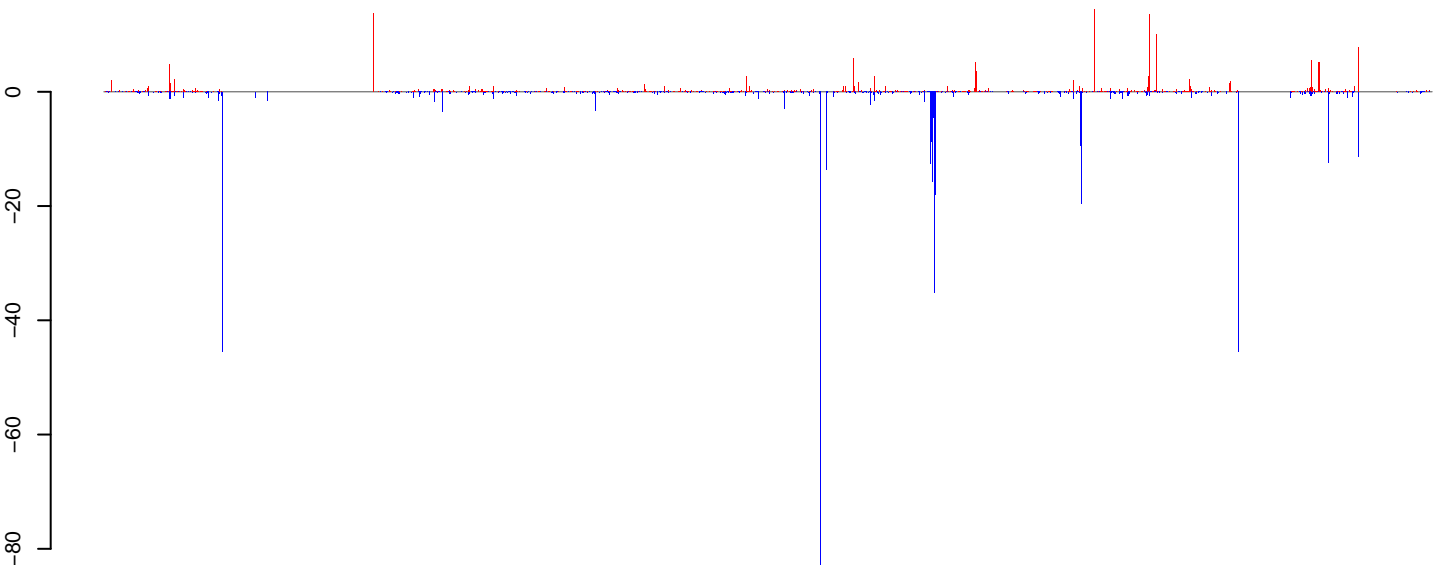
positive=229, negative=623, total=852

AeAlbo_FemaleWhole_BF_CT.24_35.rep



positive=32, negative=261, total=293

AeAlbo_FemaleWhole_BF_CT.rep

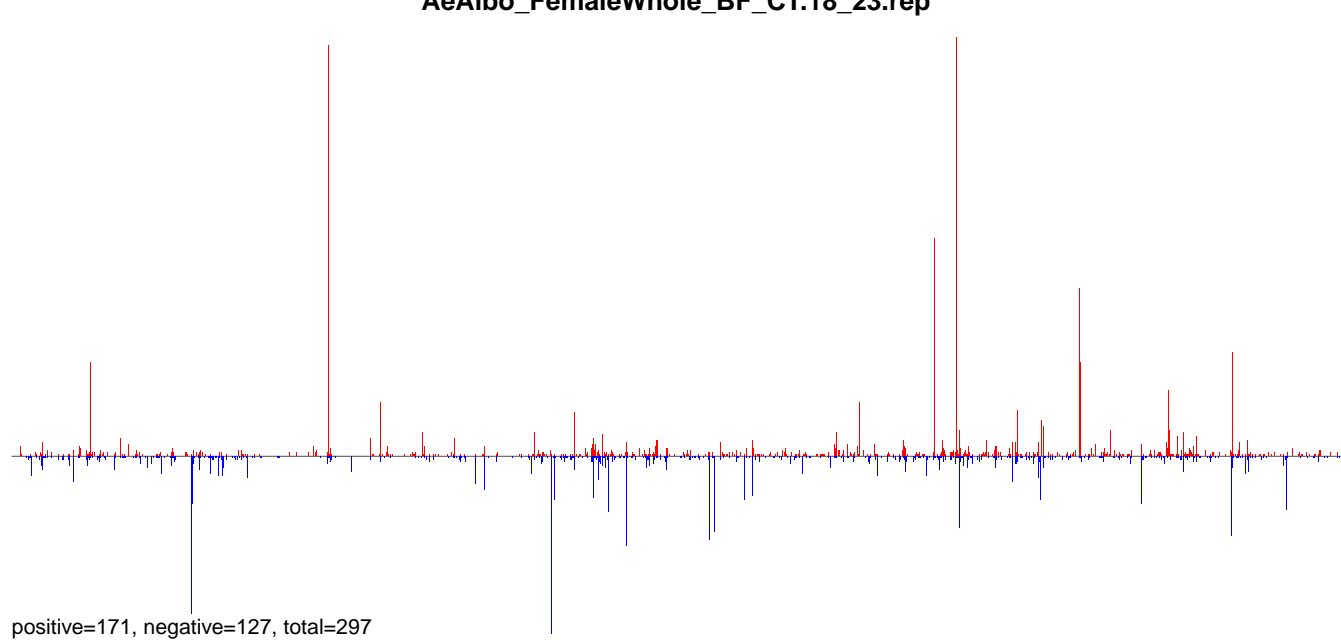


positive=261, negative=884, total=1145

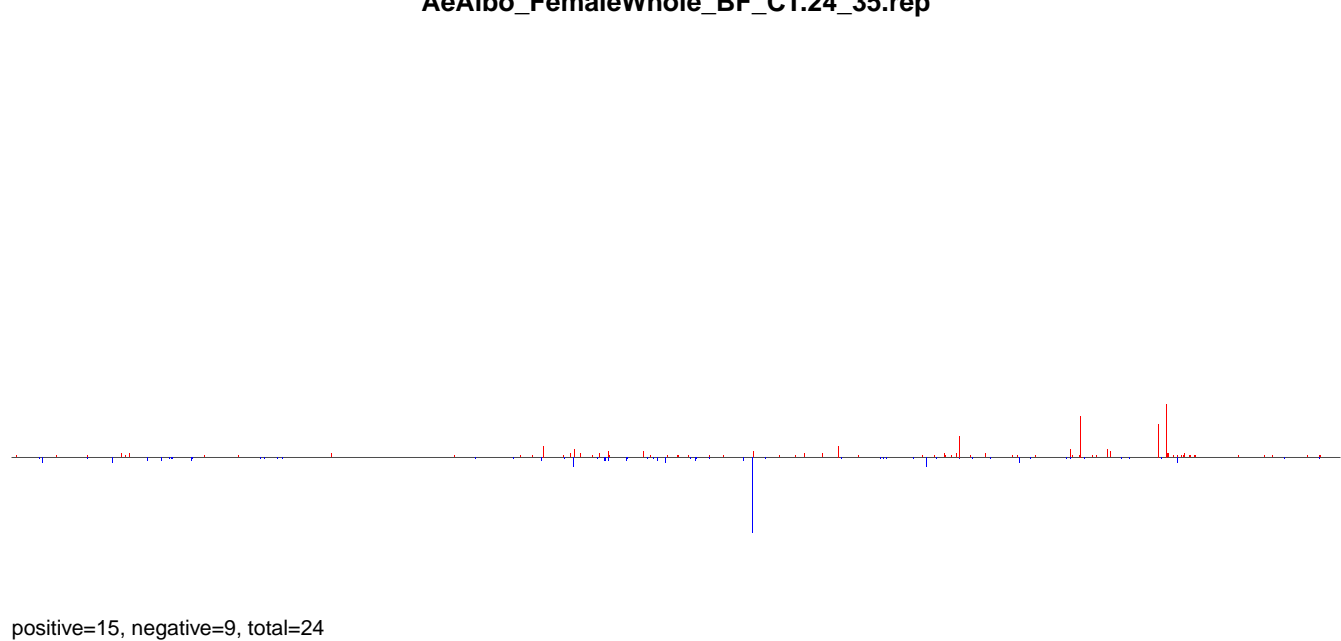
Window size=50, length=1320505, Wolbachia@Wolbachia_HN2016:1-1320505

0 200000 400000 600000 800000 1000000 1200000

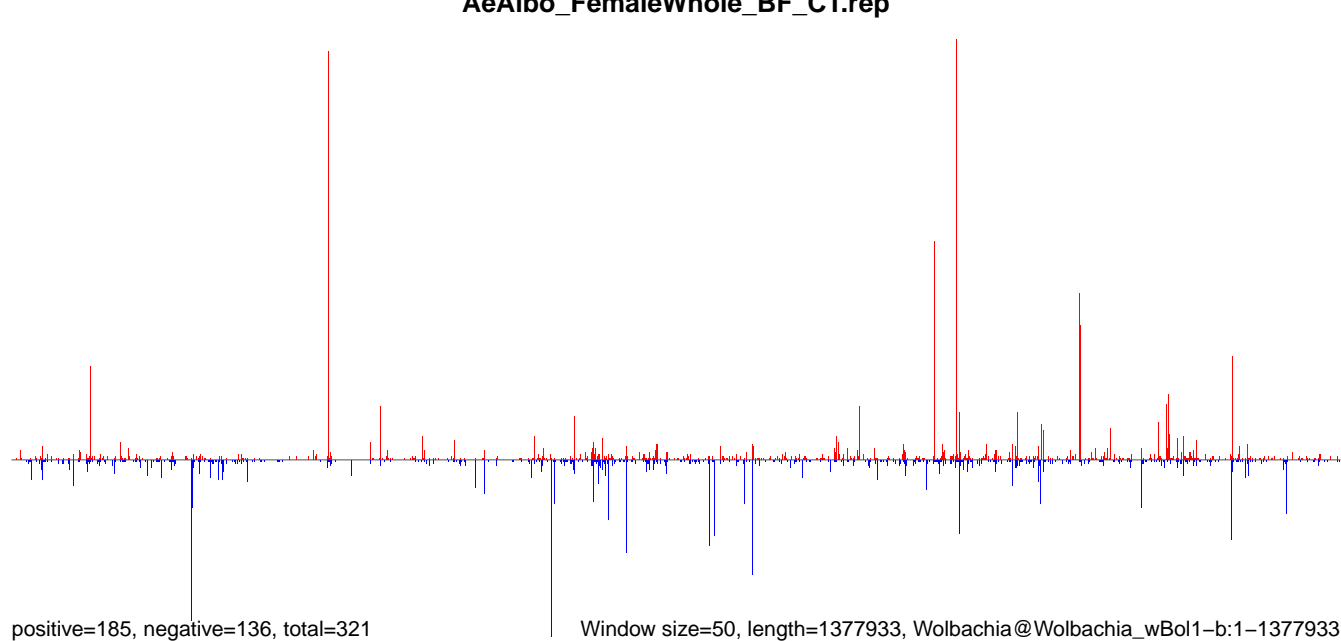
AeAlbo_FemaleWhole_BF_CT.18_23.rep



AeAlbo_FemaleWhole_BF_CT.24_35.rep

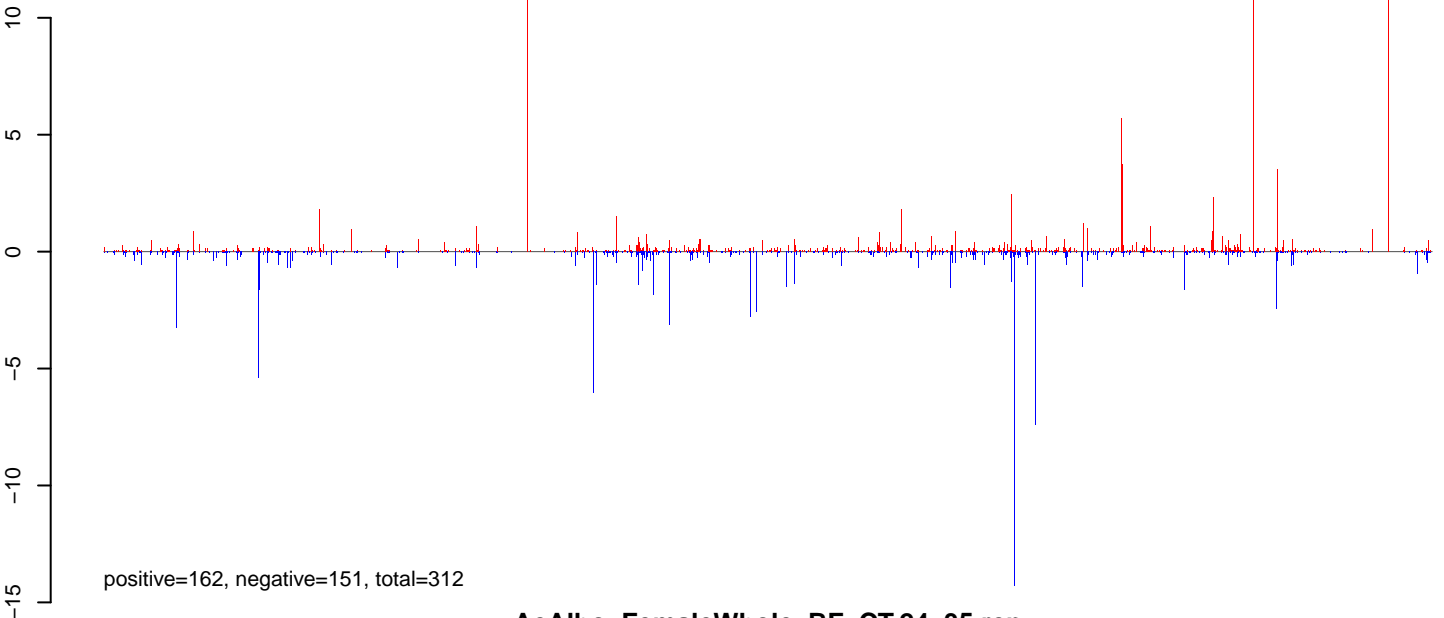


AeAlbo_FemaleWhole_BF_CT.rep

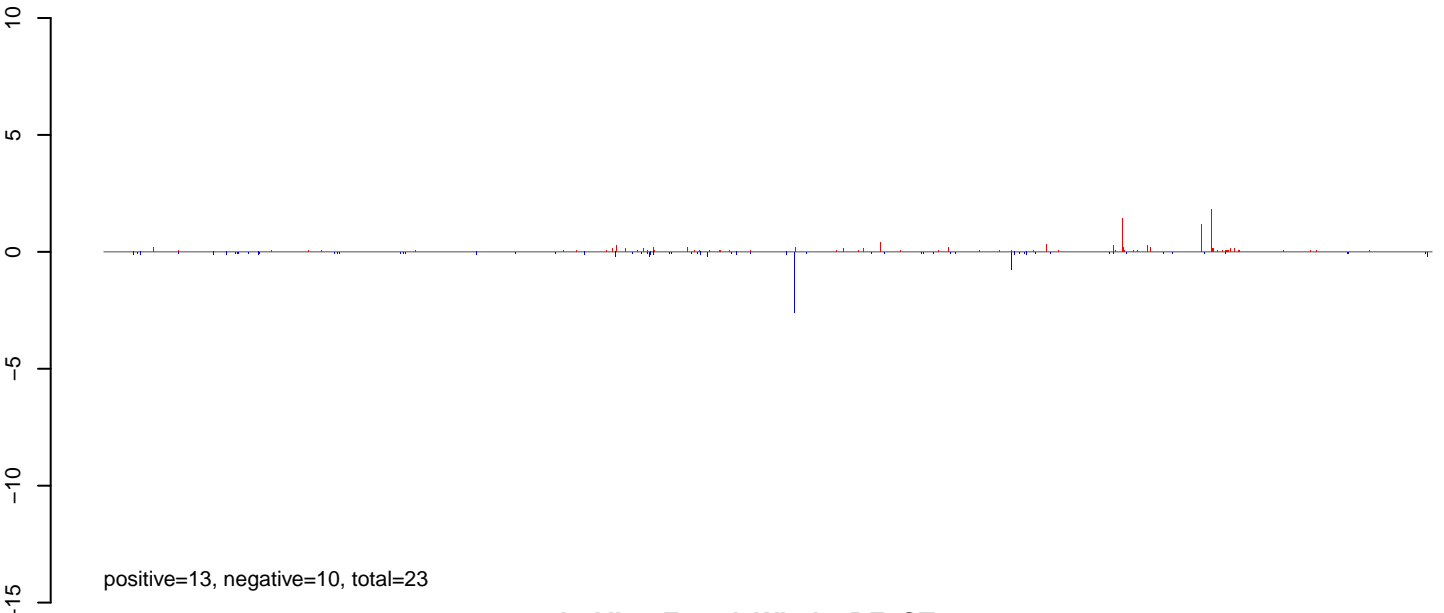


0 200000 400000 600000 800000 1000000 1200000 1400000

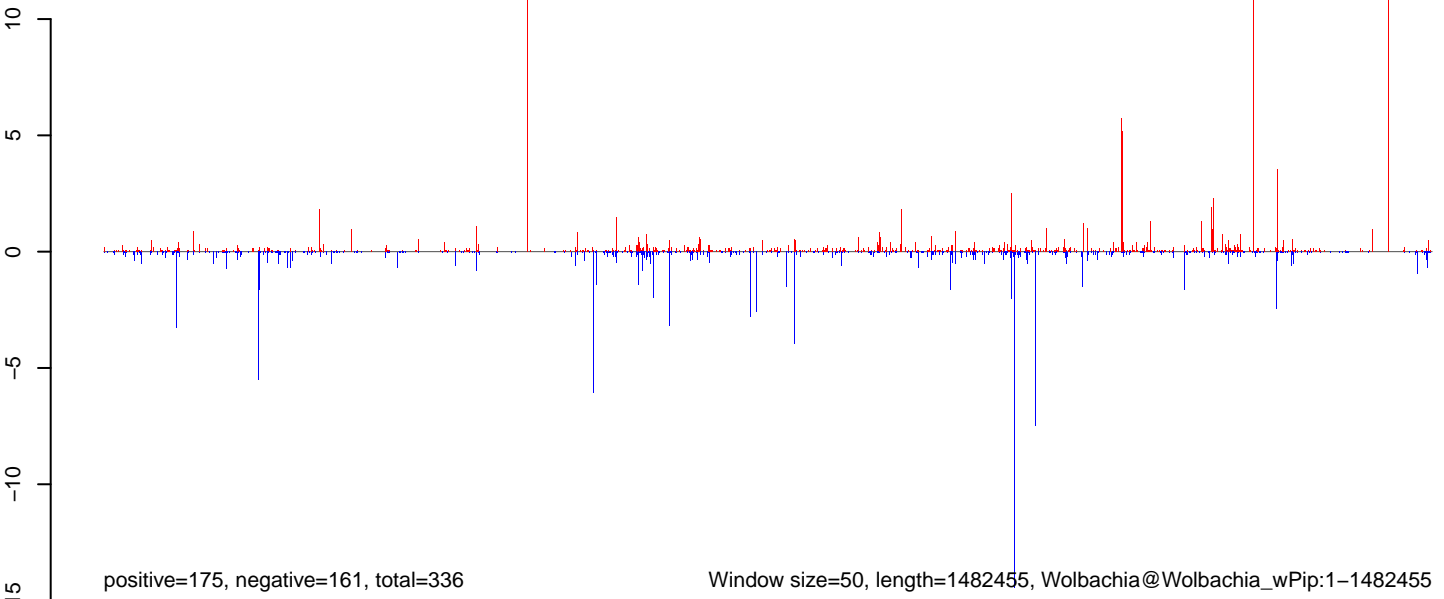
AeAlbo_FemaleWhole_BF_CT.18_23.rep



AeAlbo_FemaleWhole_BF_CT.24_35.rep



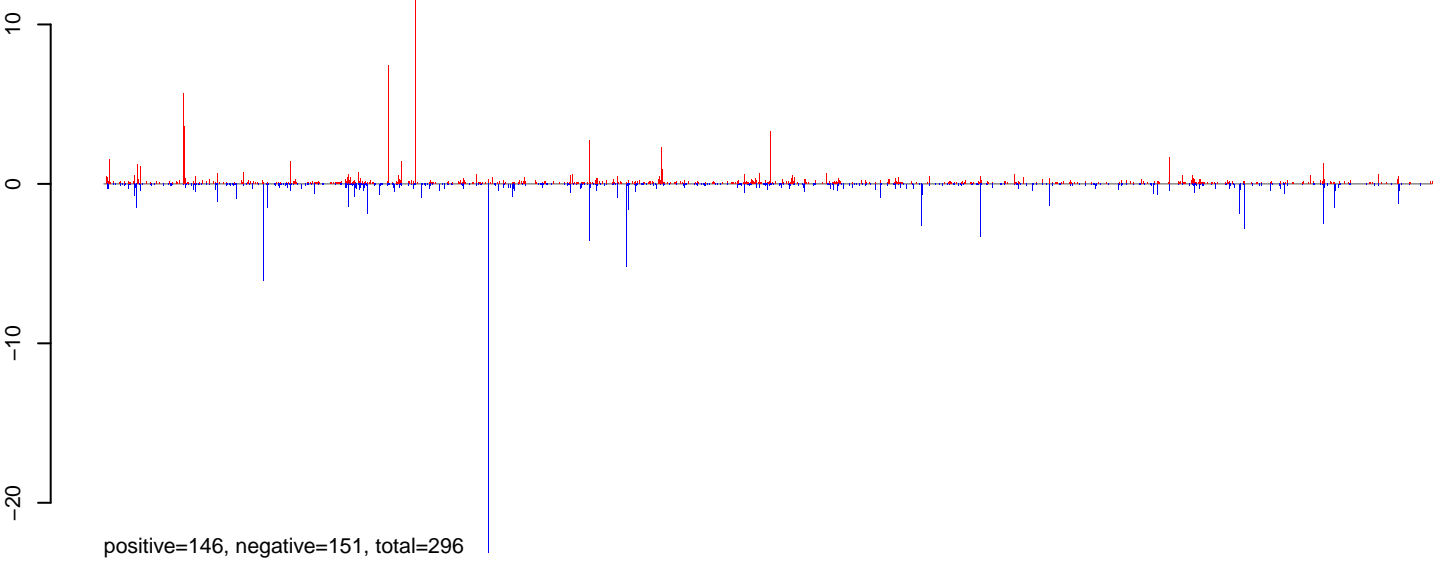
AeAlbo_FemaleWhole_BF_CT.rep



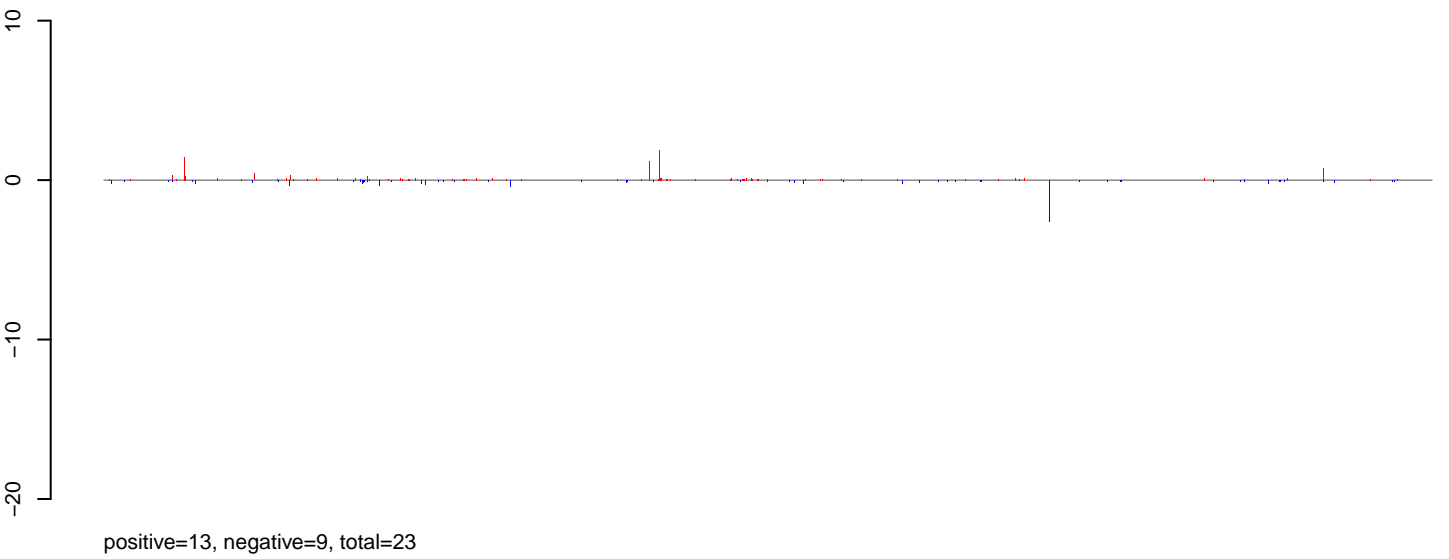
Window size=50, length=1482455, Wolbachia@Wolbachia_wPip:1-1482455

0 500000 1000000 1500000

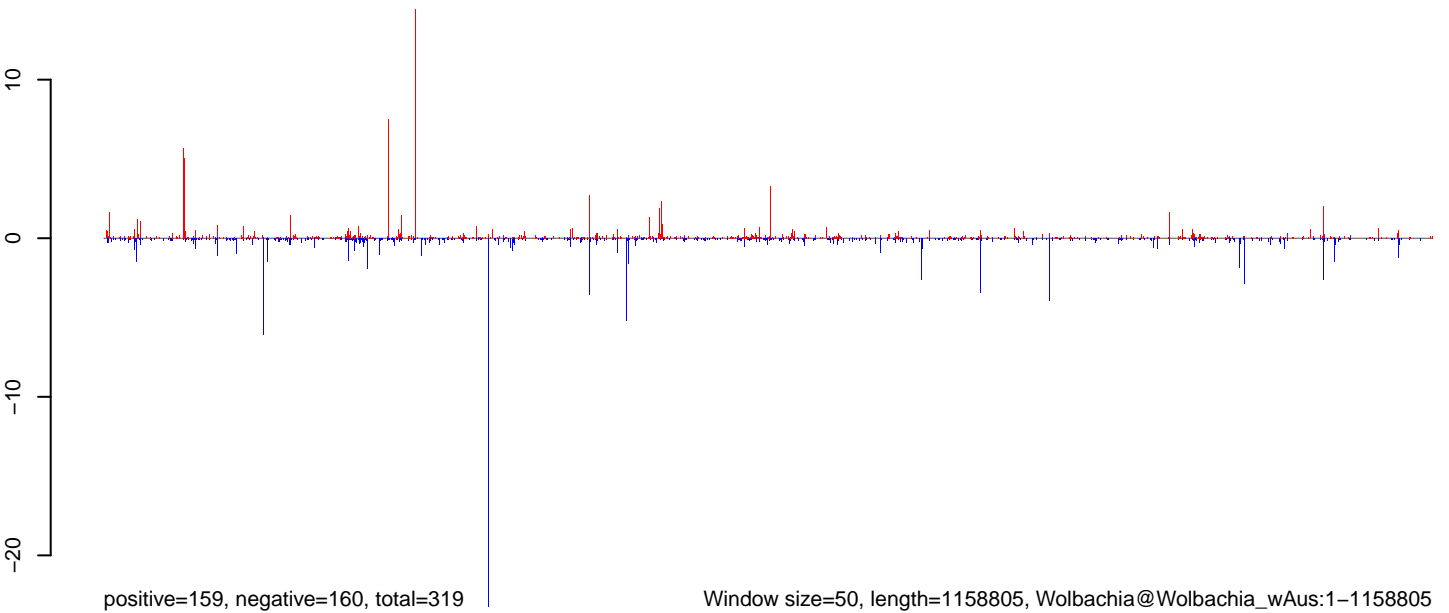
AeAlbo_FemaleWhole_BF_CT.18_23.rep



AeAlbo_FemaleWhole_BF_CT.24_35.rep



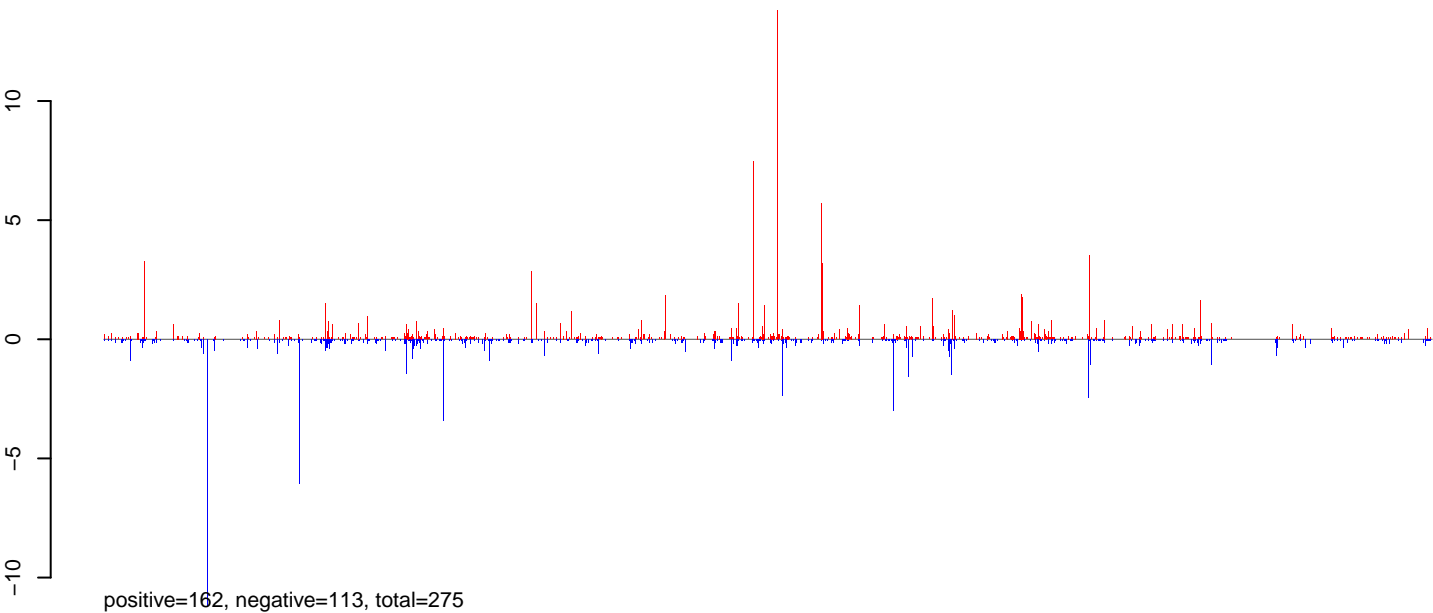
AeAlbo_FemaleWhole_BF_CT.rep



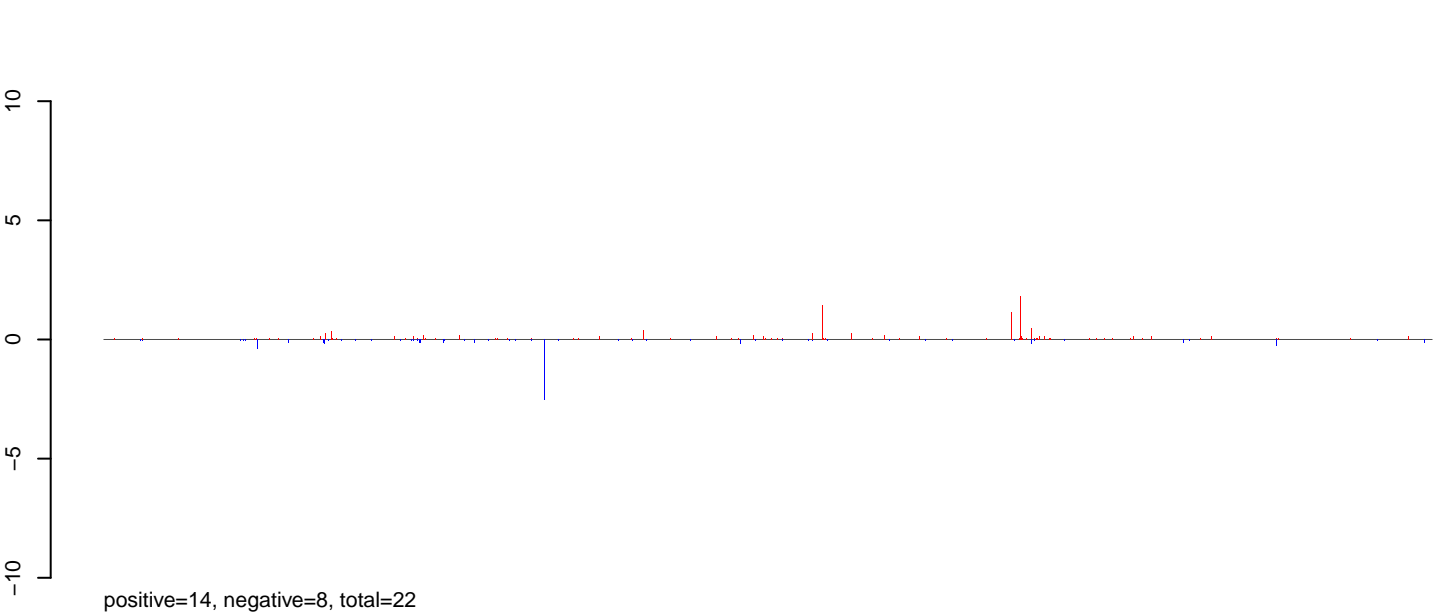
Window size=50, length=1158805, Wolbachia@Wolbachia_wAus:1-1158805

0 200000 400000 600000 800000 1000000 1200000

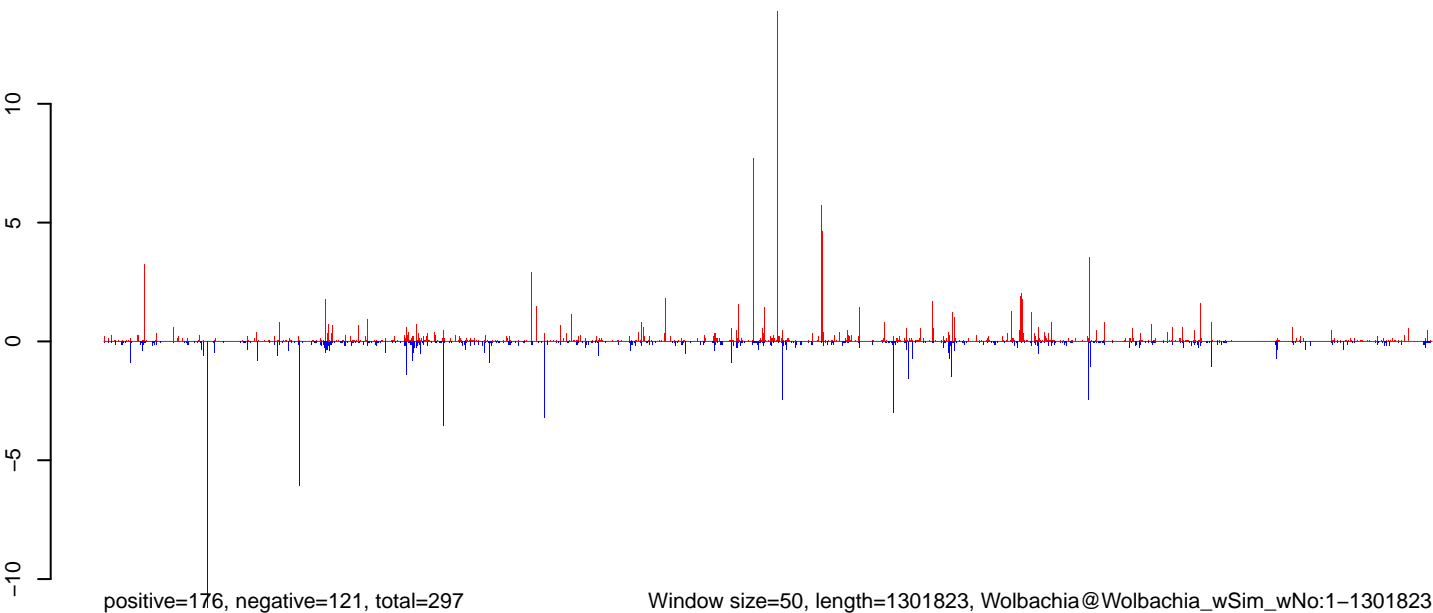
AeAlbo_FemaleWhole_BF_CT.18_23.rep



AeAlbo_FemaleWhole_BF_CT.24_35.rep



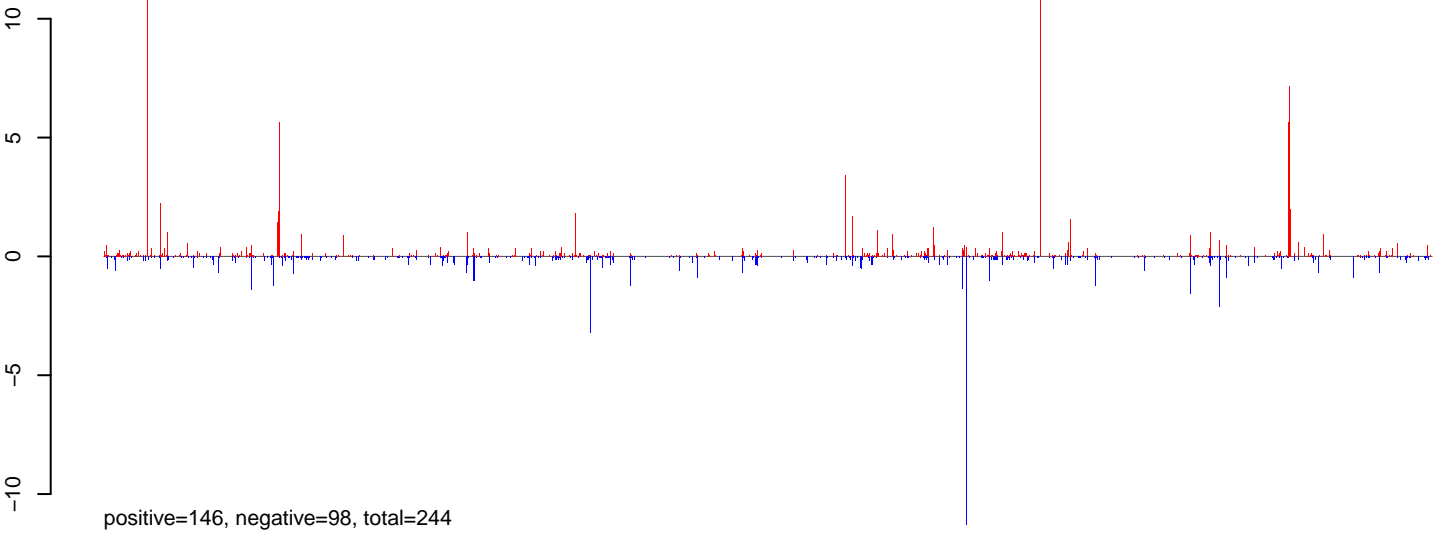
AeAlbo_FemaleWhole_BF_CT.rep



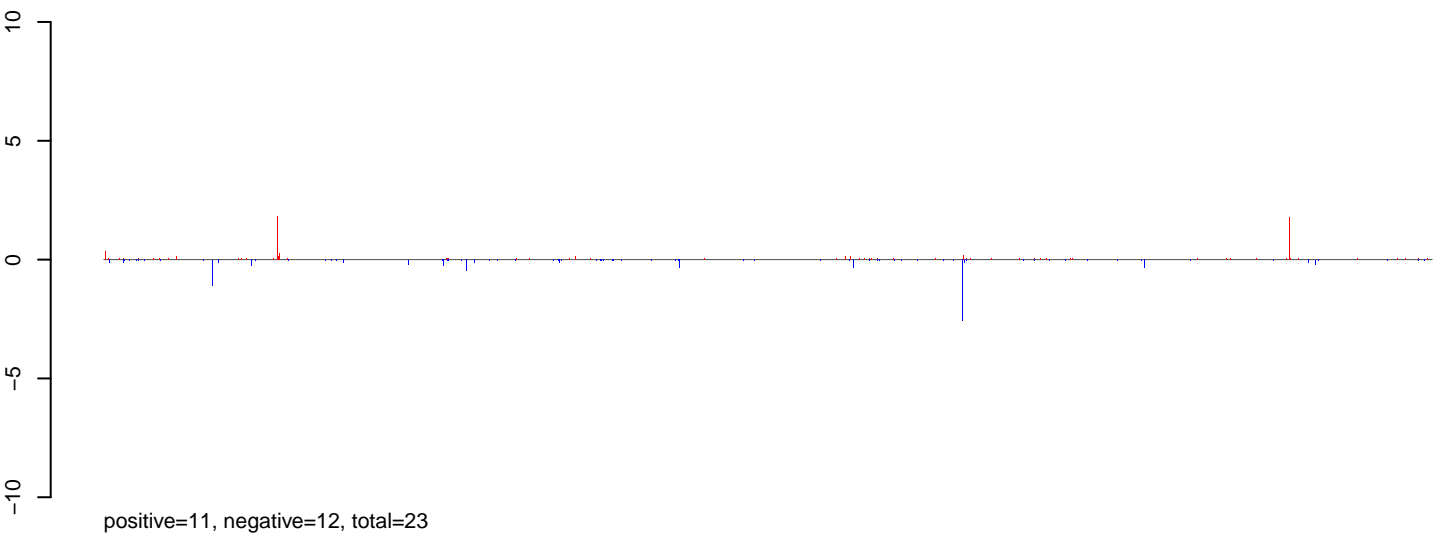
Window size=50, length=1301823, Wolbachia@Wolbachia_wSim_wNo:1-1301823

0 200000 400000 600000 800000 1000000 1200000

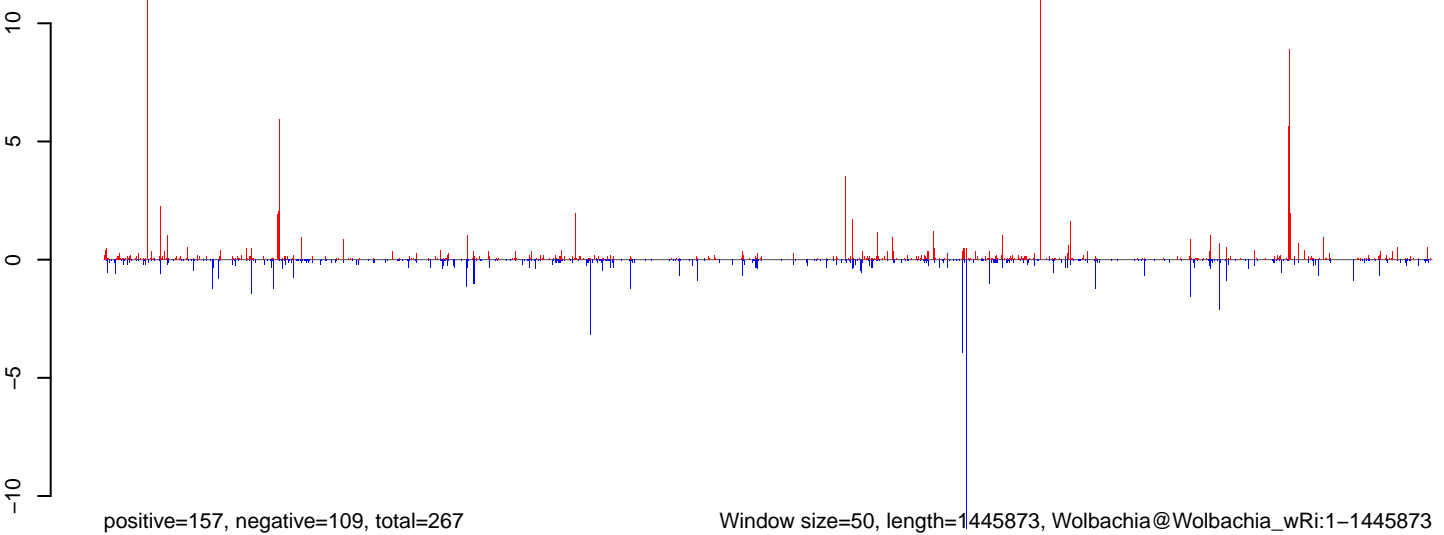
AeAlbo_FemaleWhole_BF_CT.18_23.rep



AeAlbo_FemaleWhole_BF_CT.24_35.rep

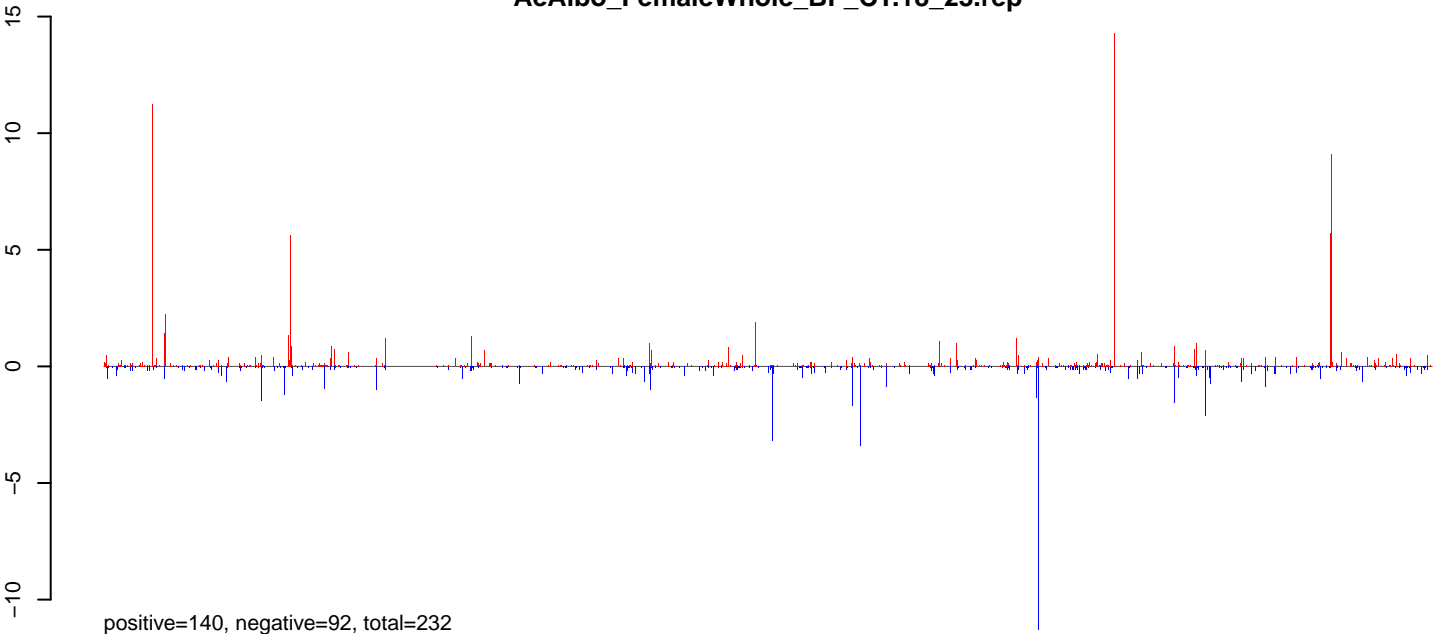


AeAlbo_FemaleWhole_BF_CT.rep

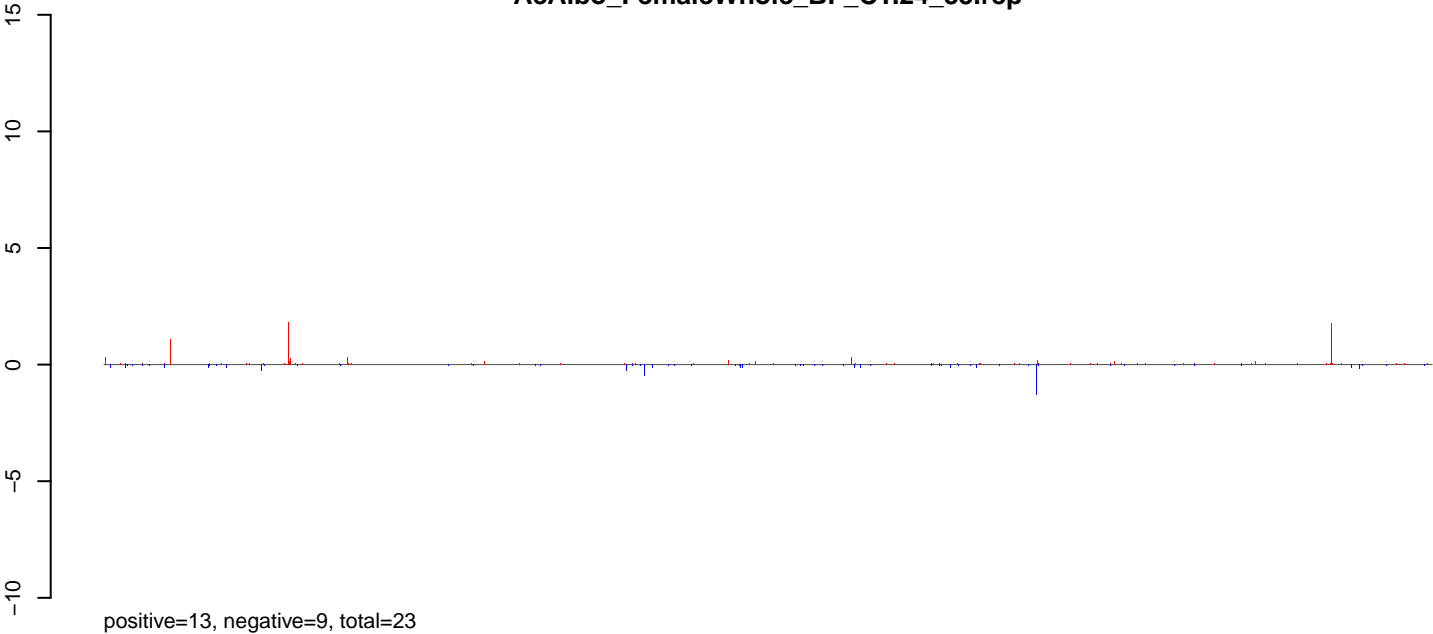


0 500000 1000000 1500000

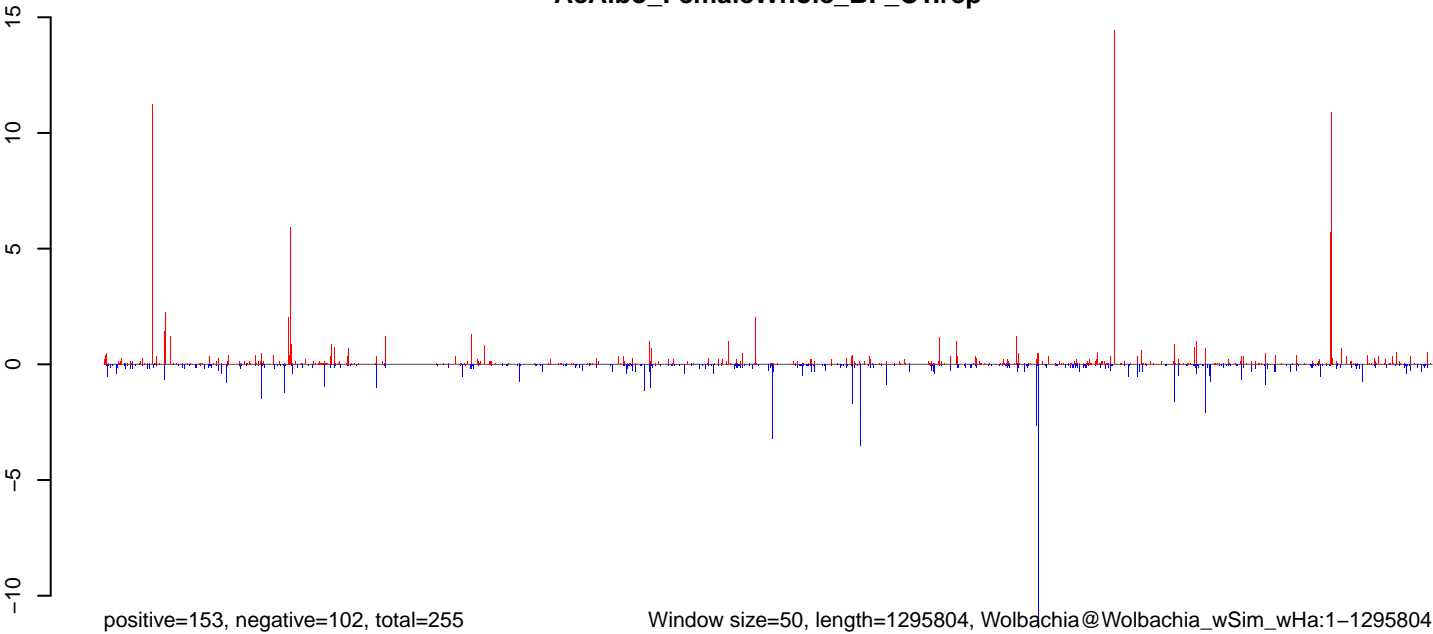
AeAlbo_FemaleWhole_BF_CT.18_23.rep



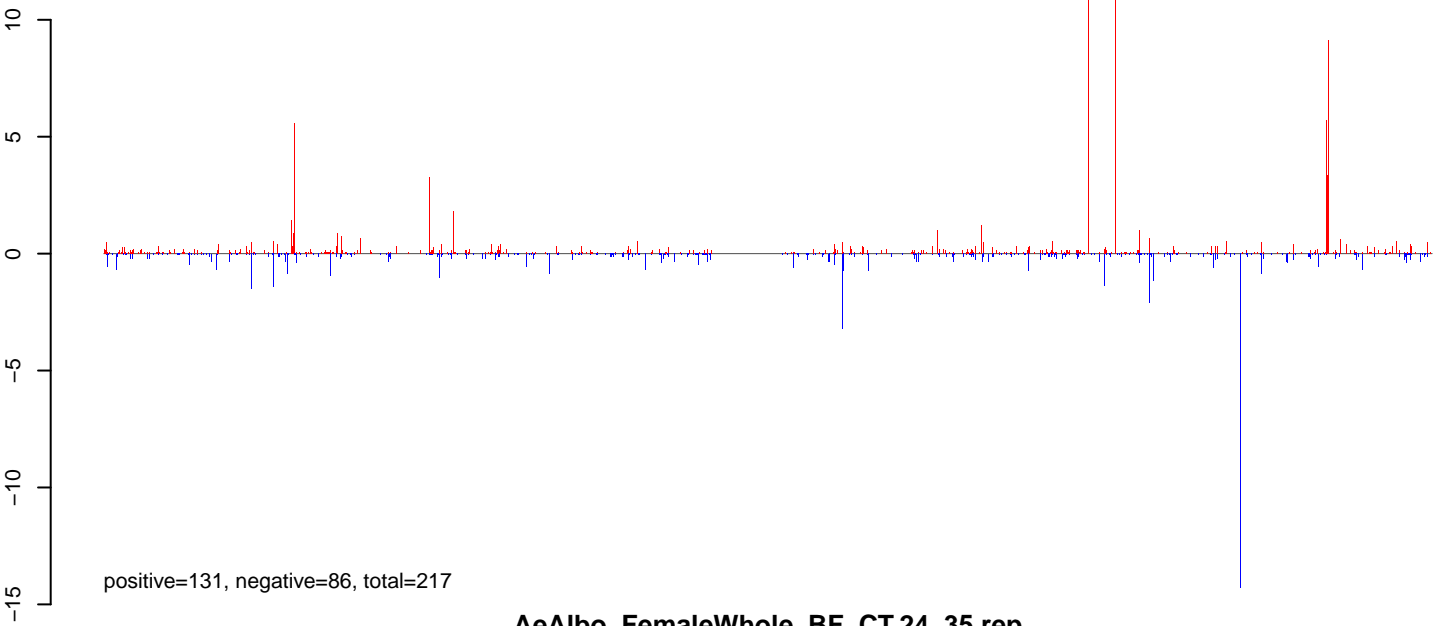
AeAlbo_FemaleWhole_BF_CT.24_35.rep



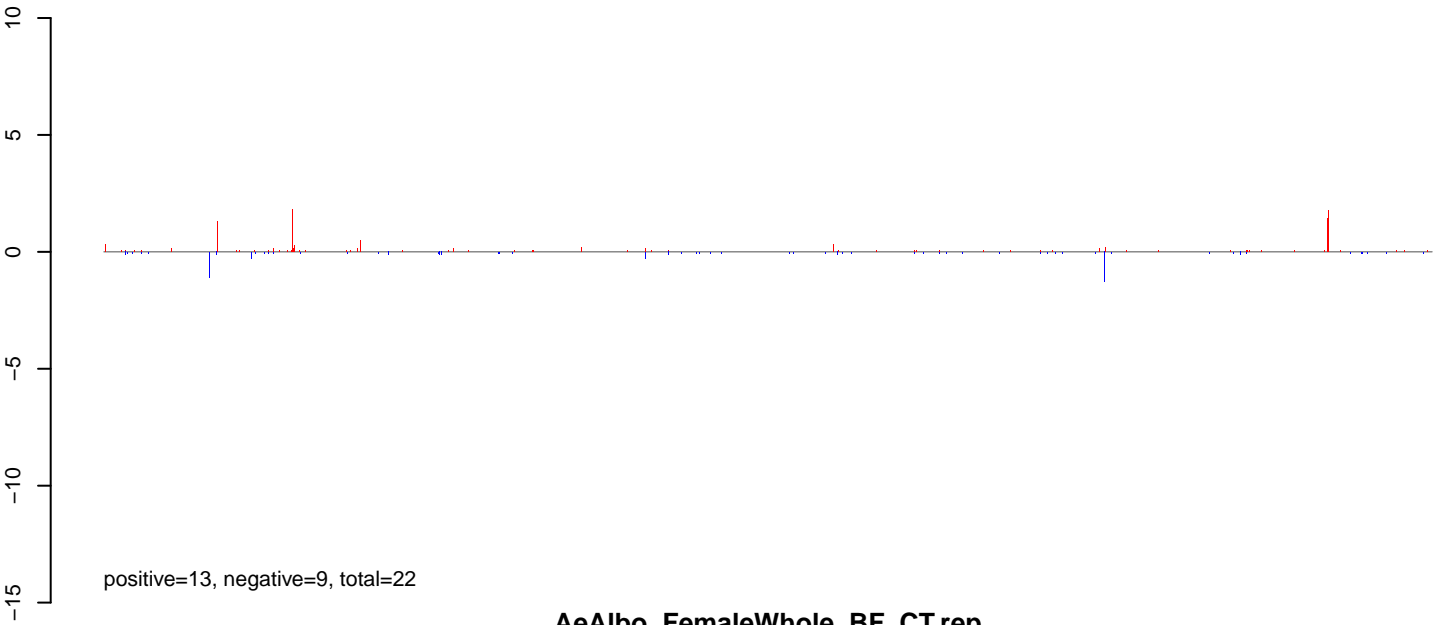
AeAlbo_FemaleWhole_BF_CT.rep



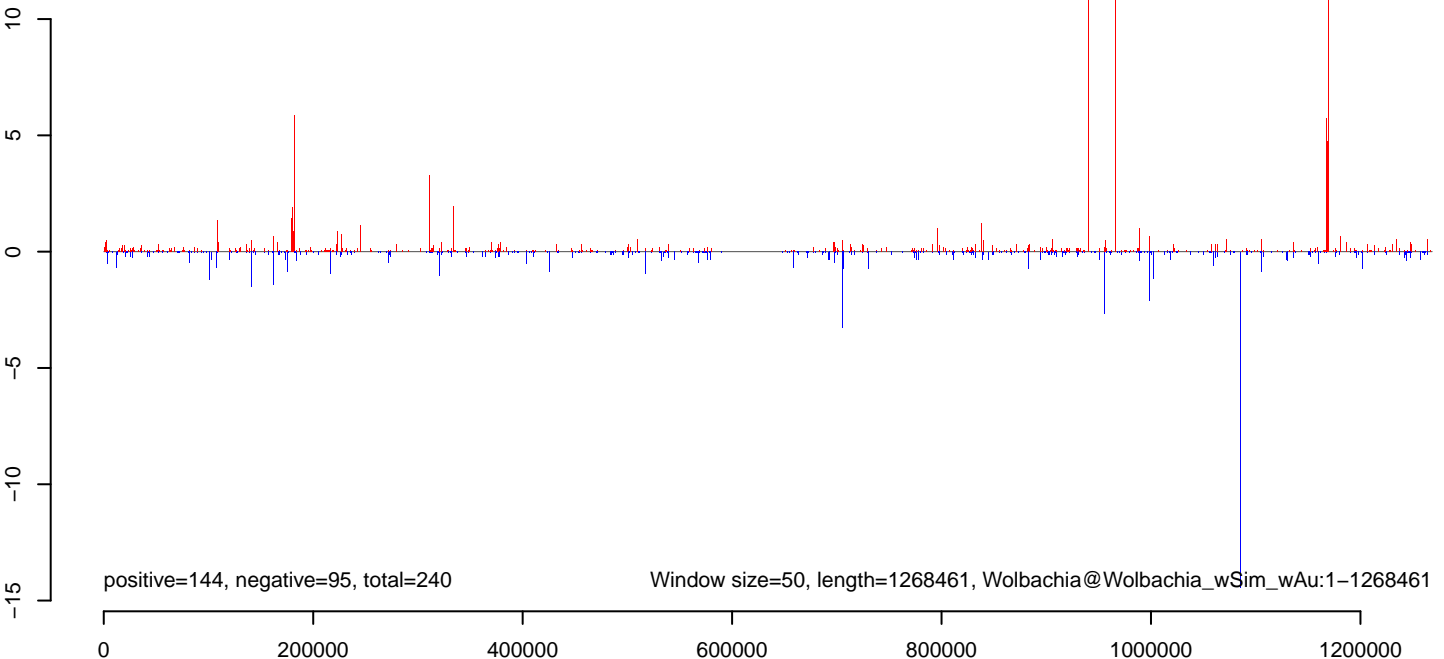
AeAlbo_FemaleWhole_BF_CT.18_23.rep



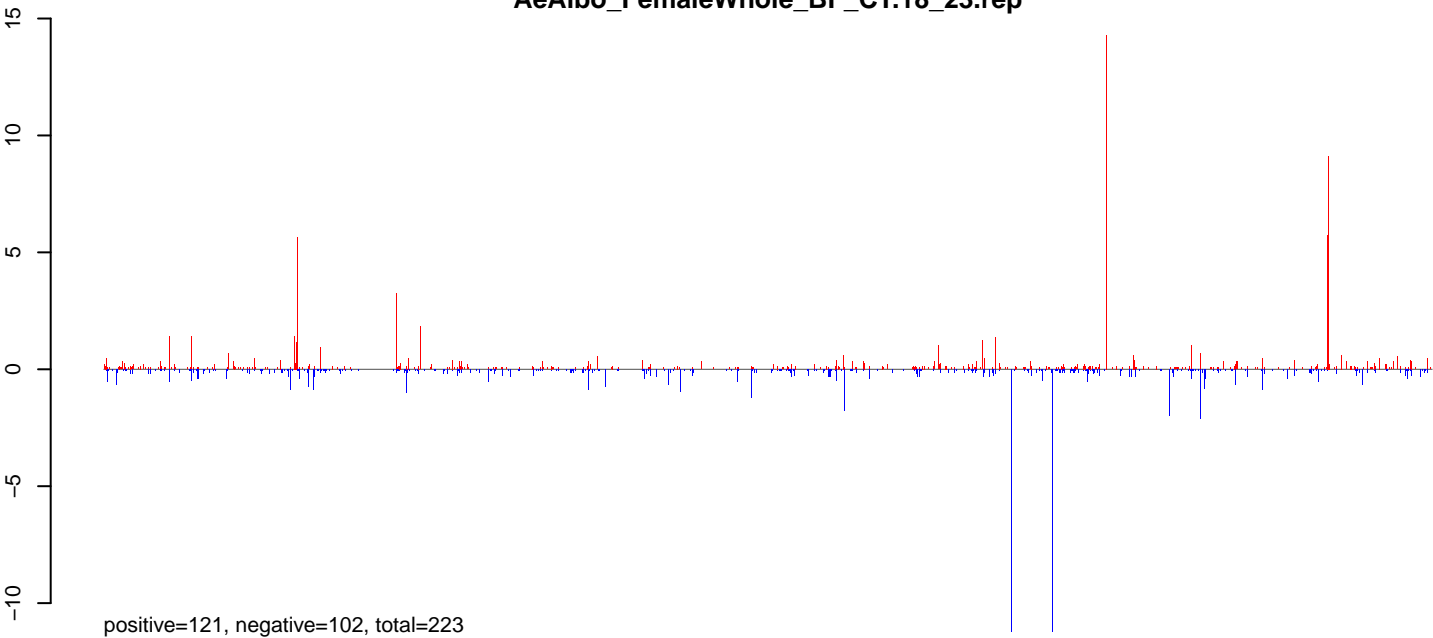
AeAlbo_FemaleWhole_BF_CT.24_35.rep



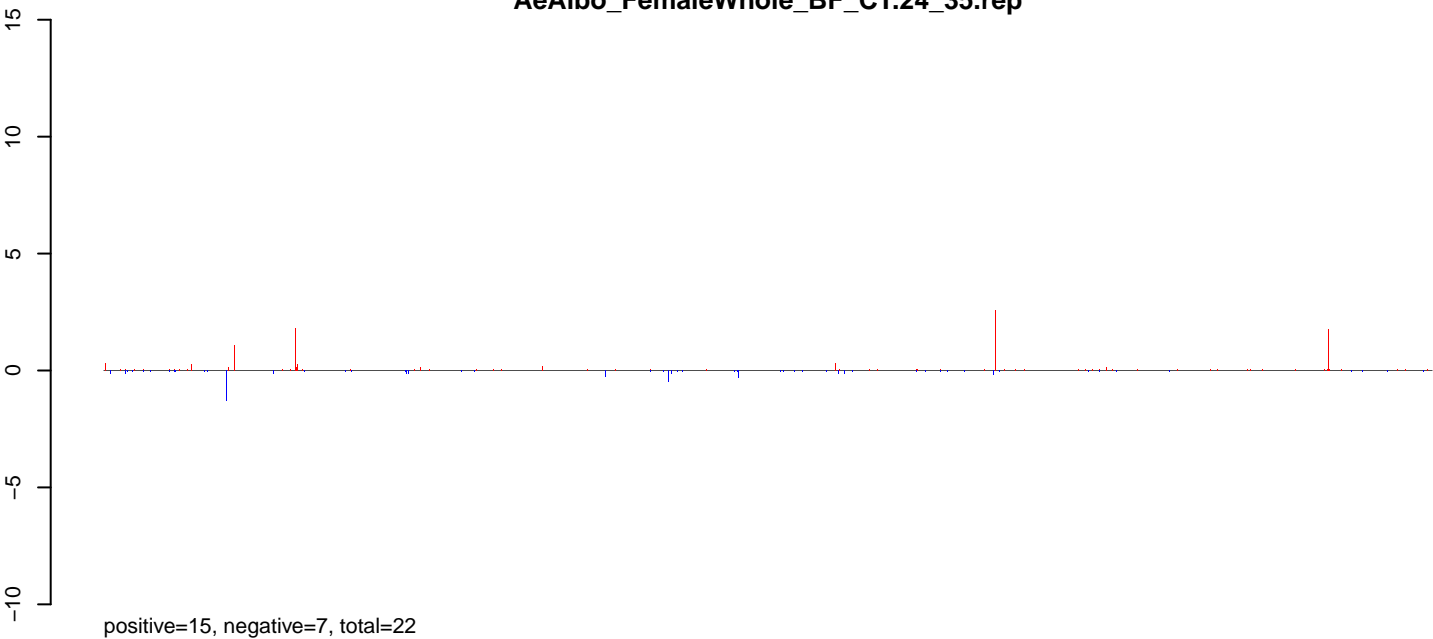
AeAlbo_FemaleWhole_BF_CT.rep



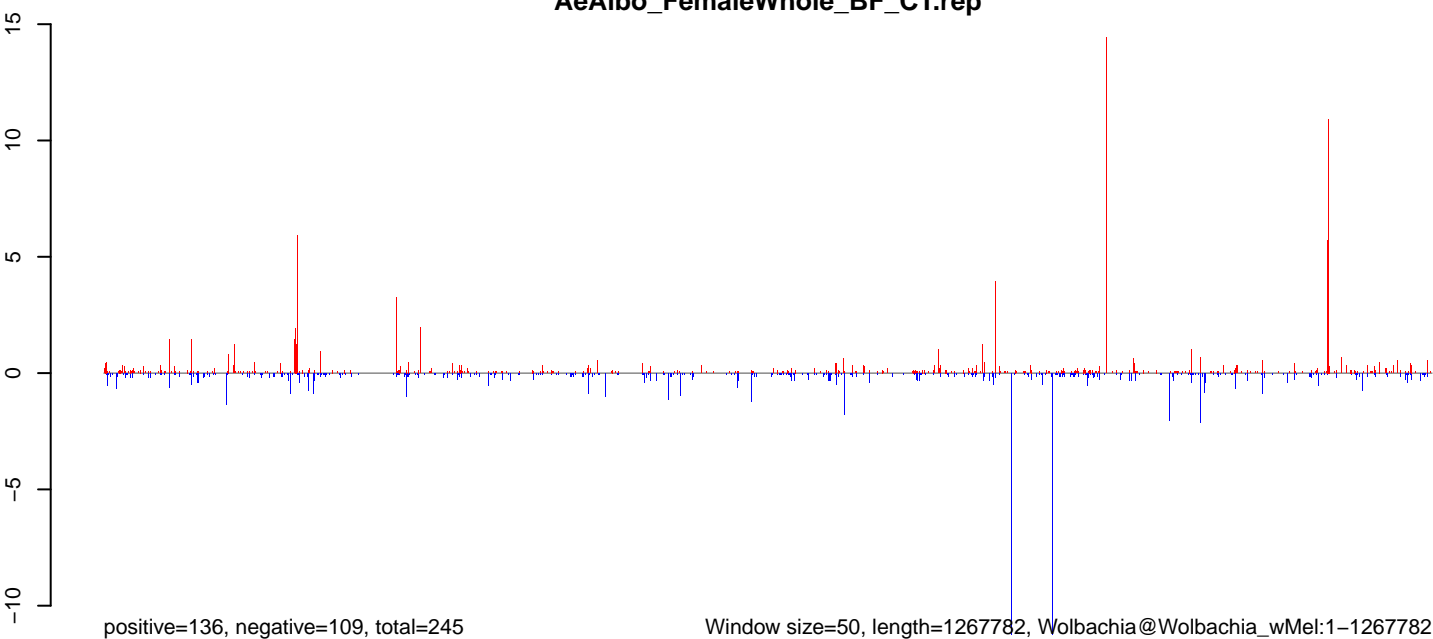
AeAlbo_FemaleWhole_BF_CT.18_23.rep



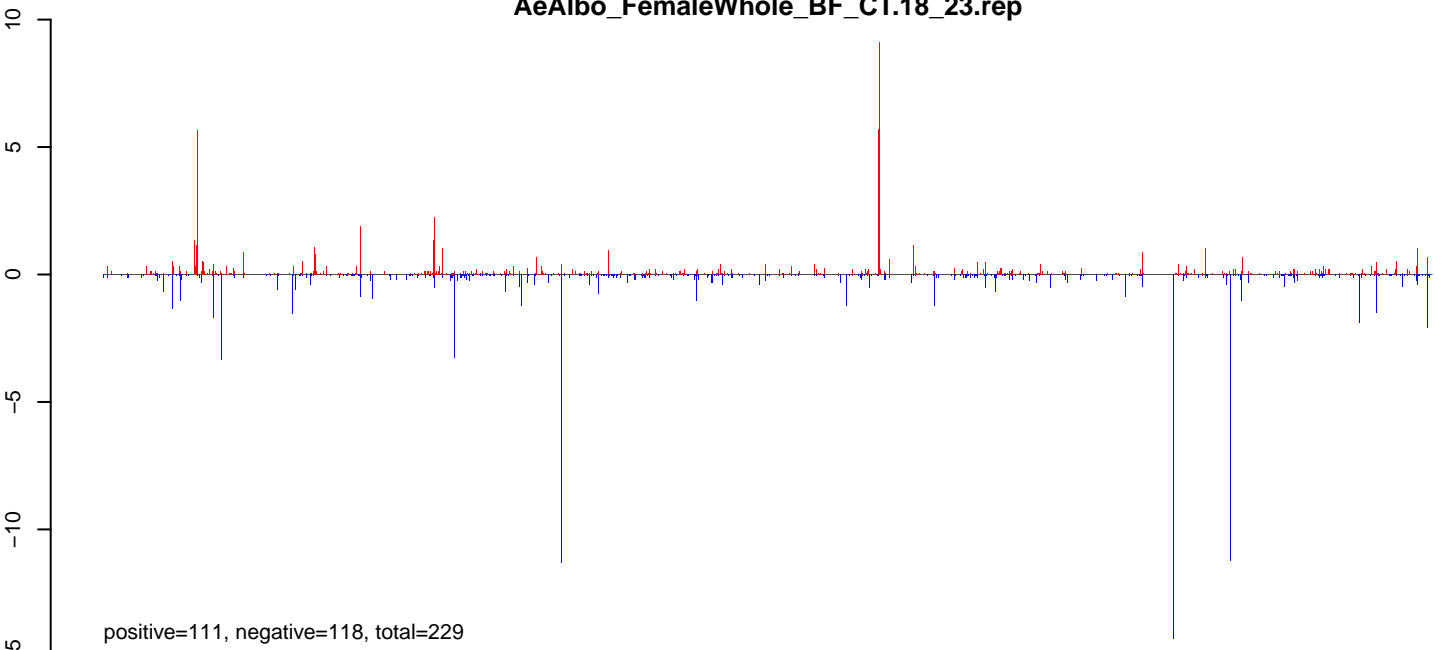
AeAlbo_FemaleWhole_BF_CT.24_35.rep



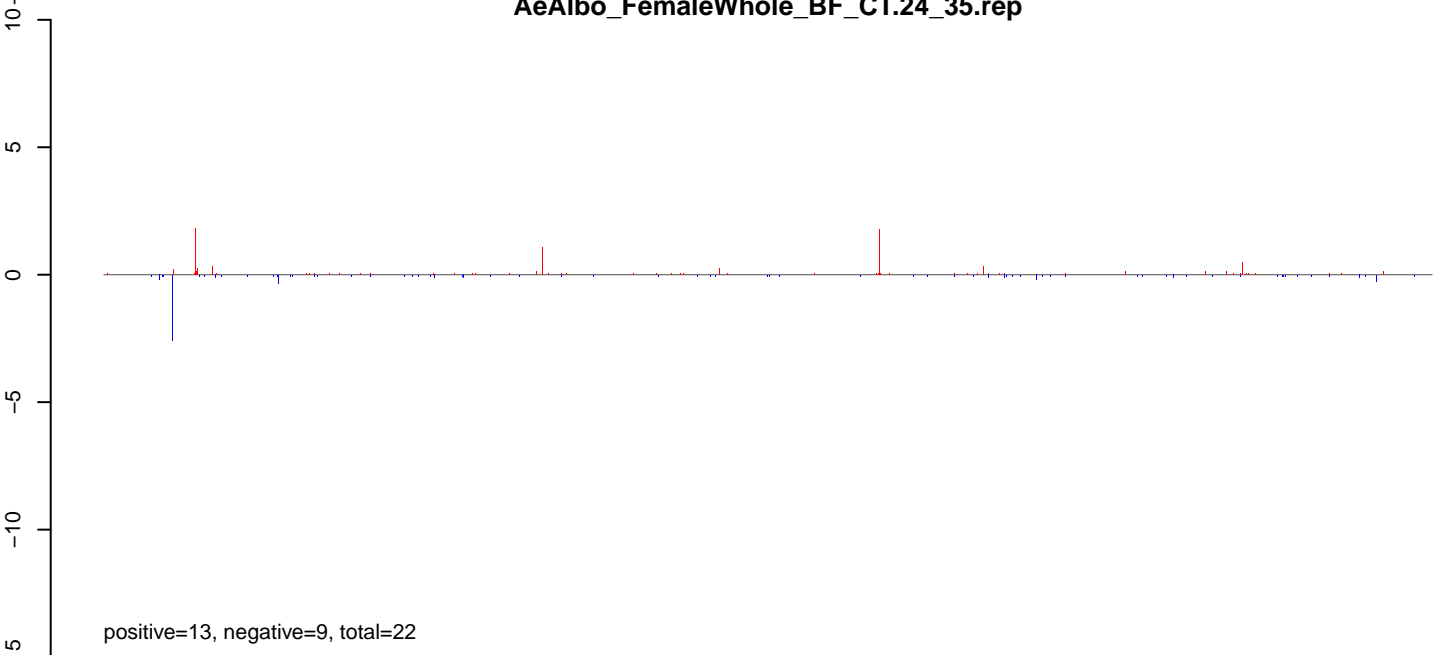
AeAlbo_FemaleWhole_BF_CT.rep



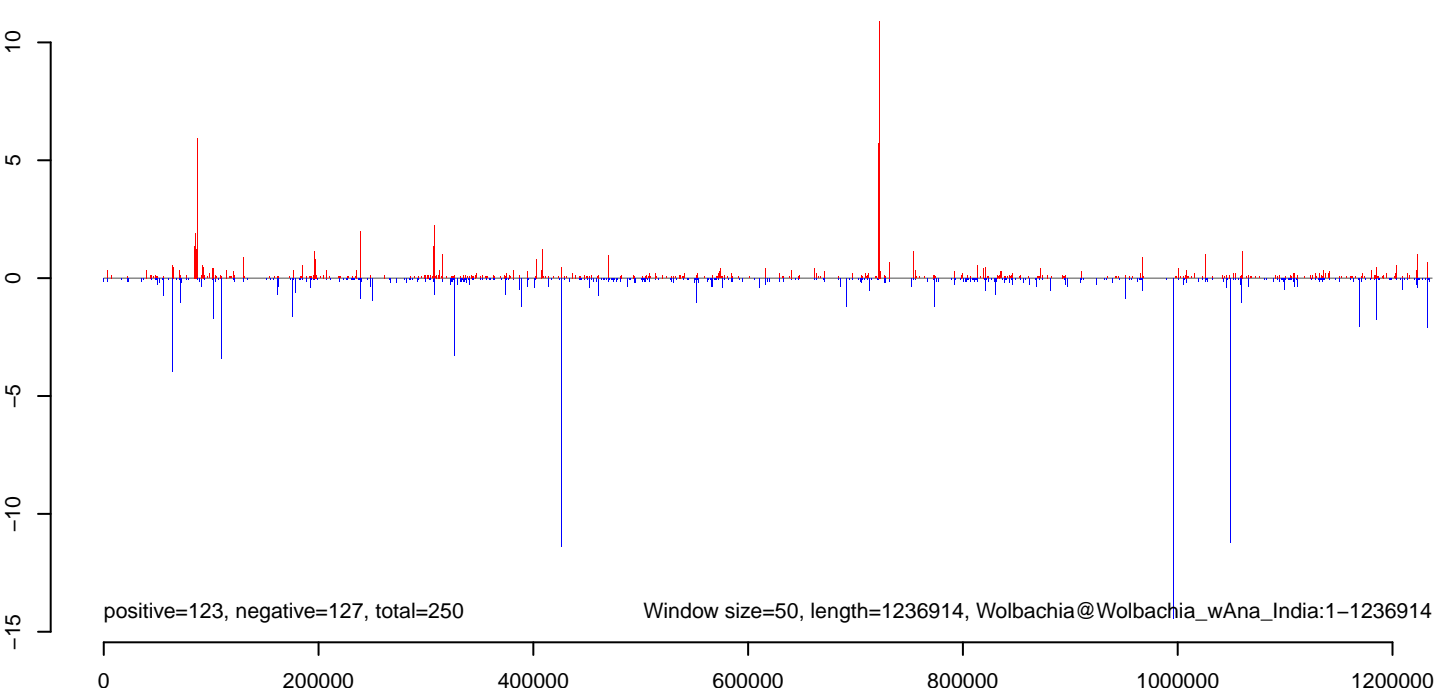
AeAlbo_FemaleWhole_BF_CT.18_23.rep



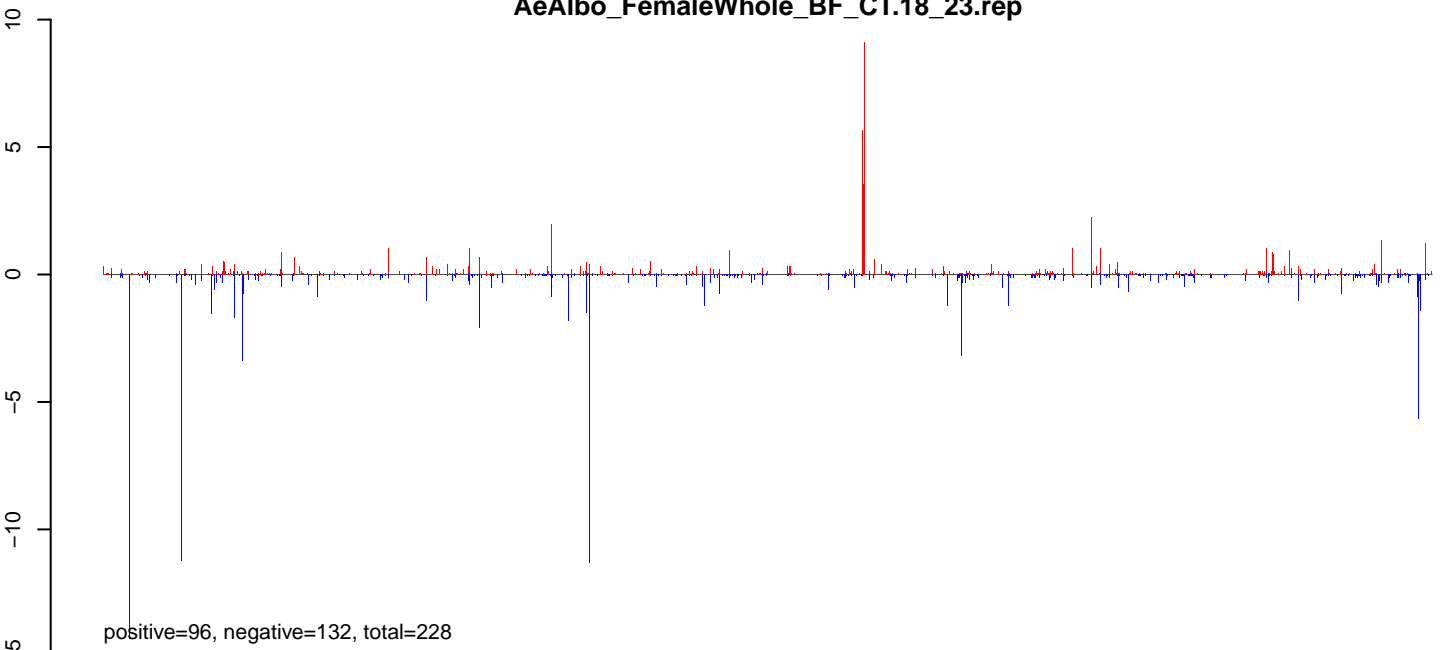
AeAlbo_FemaleWhole_BF_CT.24_35.rep



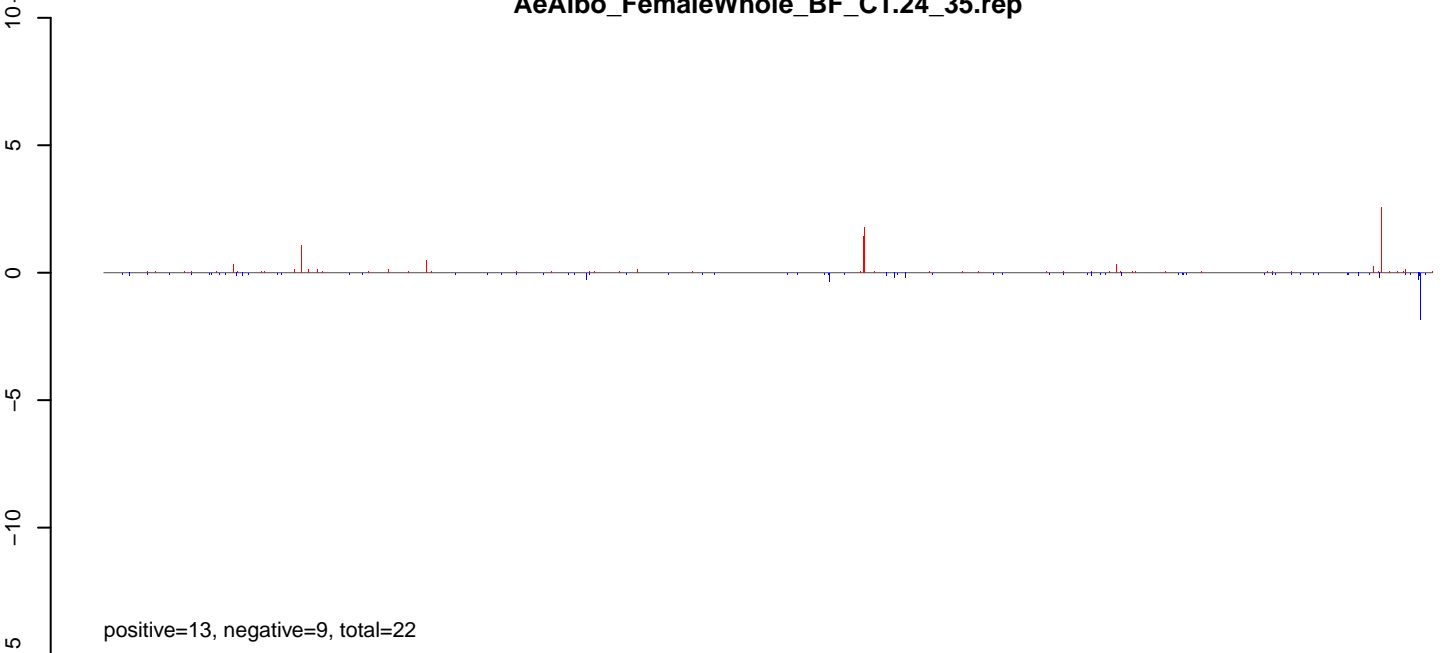
AeAlbo_FemaleWhole_BF_CT.rep



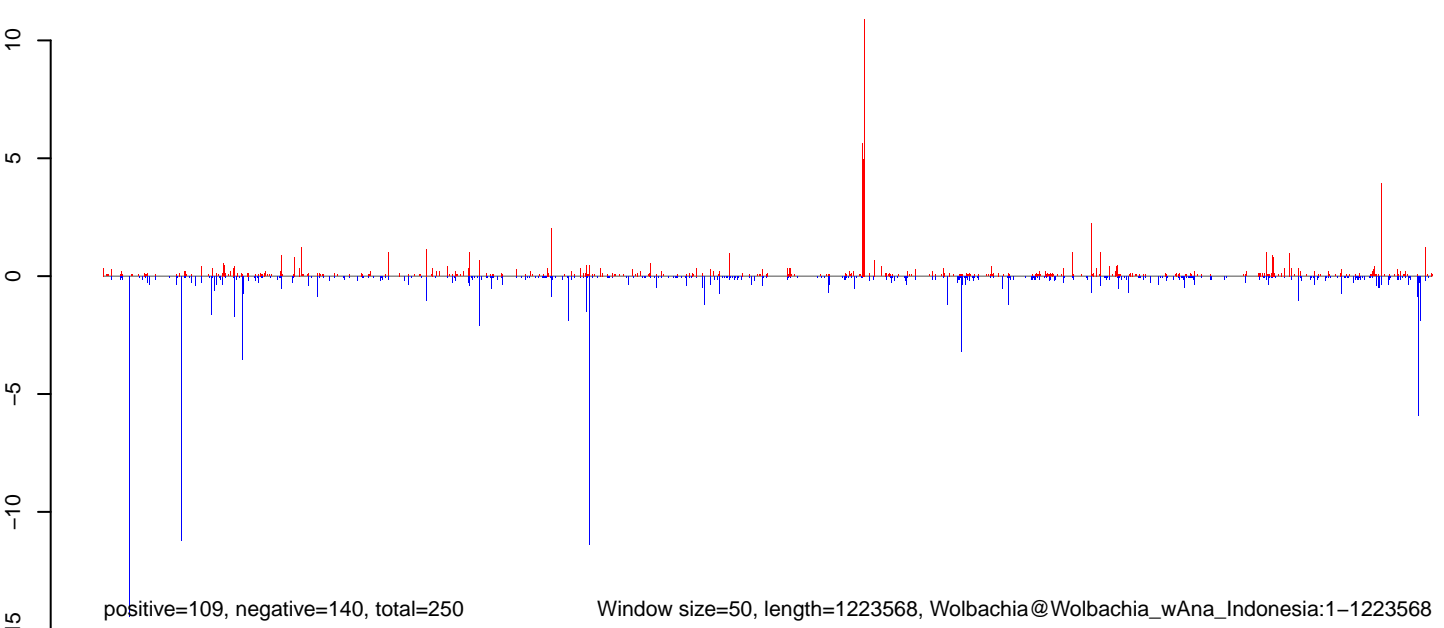
AeAlbo_FemaleWhole_BF_CT.18_23.rep



AeAlbo_FemaleWhole_BF_CT.24_35.rep



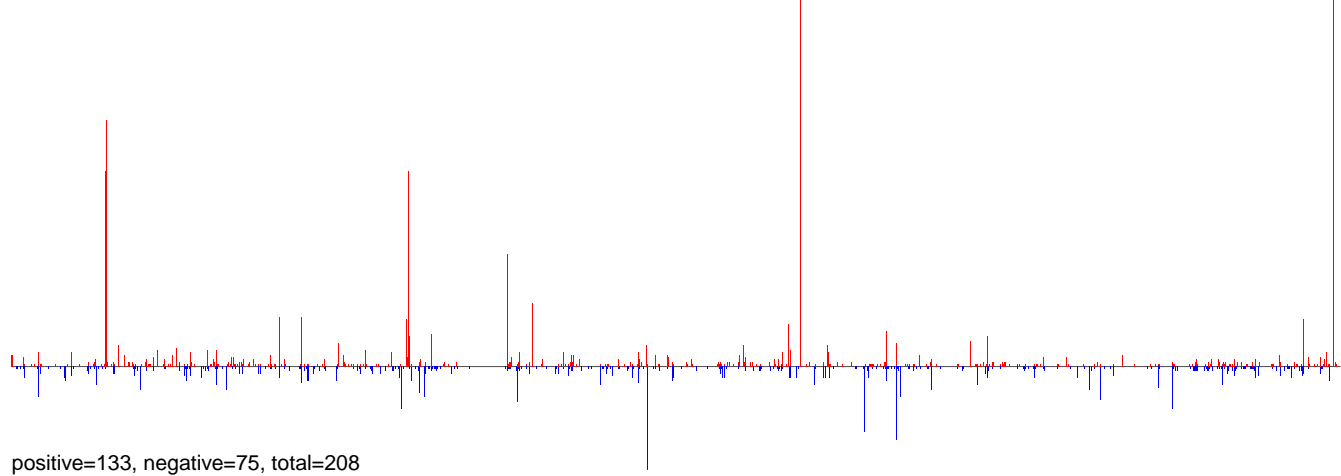
AeAlbo_FemaleWhole_BF_CT.rep



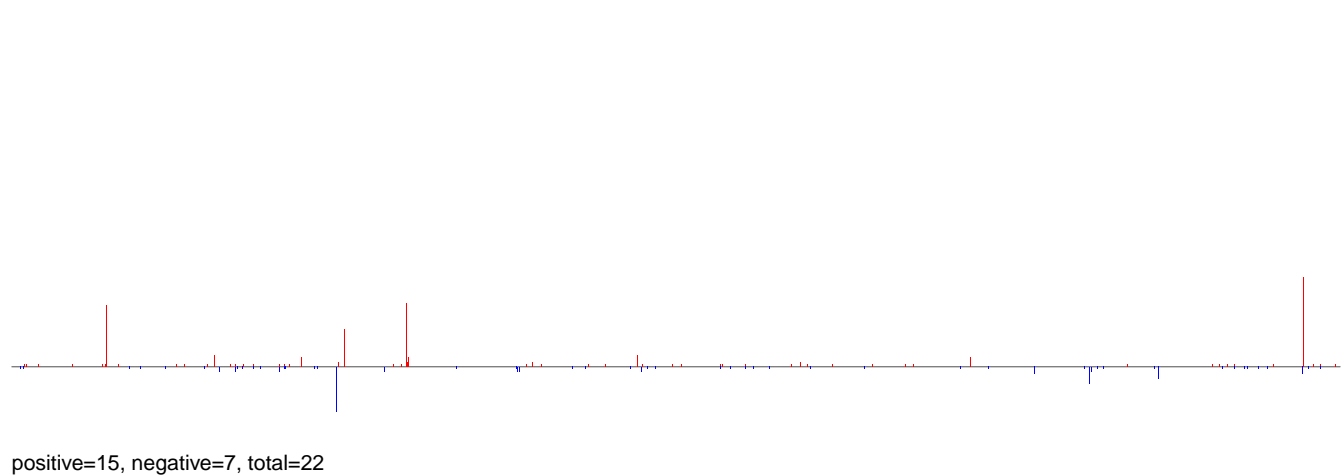
Window size=50, length=1223568, Wolbachia@Wolbachia_wAna_Indonesia:1-1223568

0 200000 400000 600000 800000 1000000 1200000

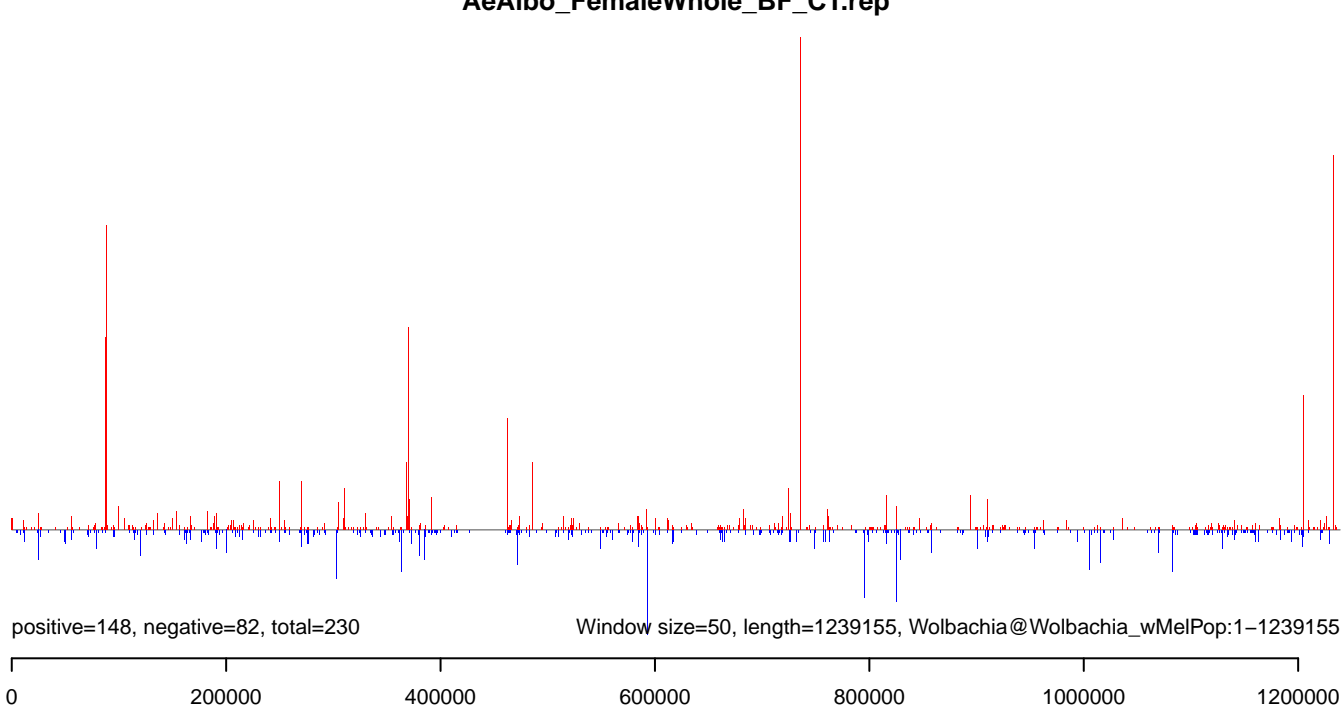
AeAlbo_FemaleWhole_BF_CT.18_23.rep



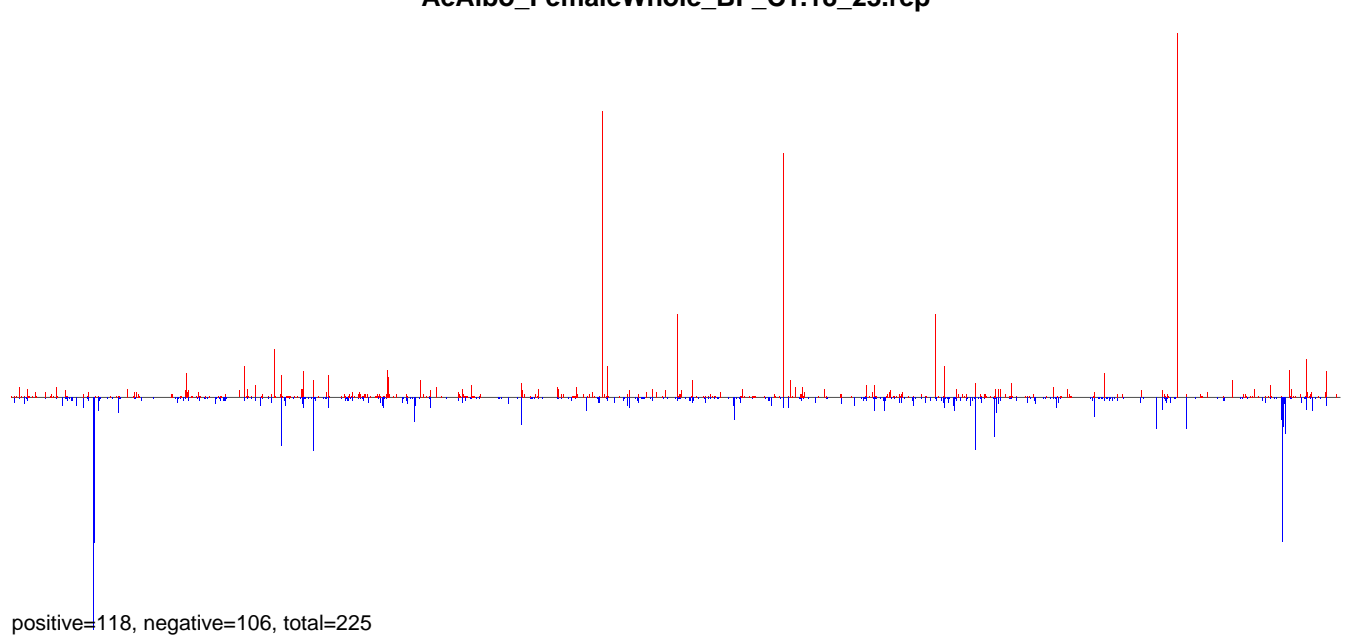
AeAlbo_FemaleWhole_BF_CT.24_35.rep



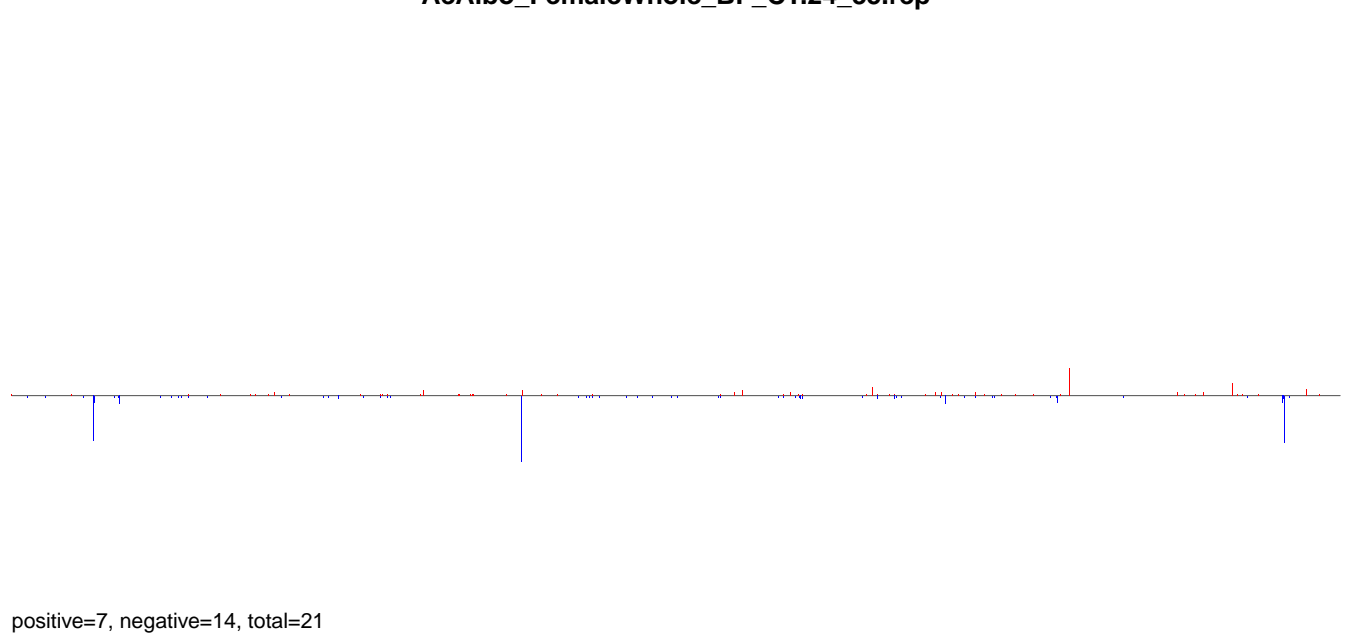
AeAlbo_FemaleWhole_BF_CT.rep



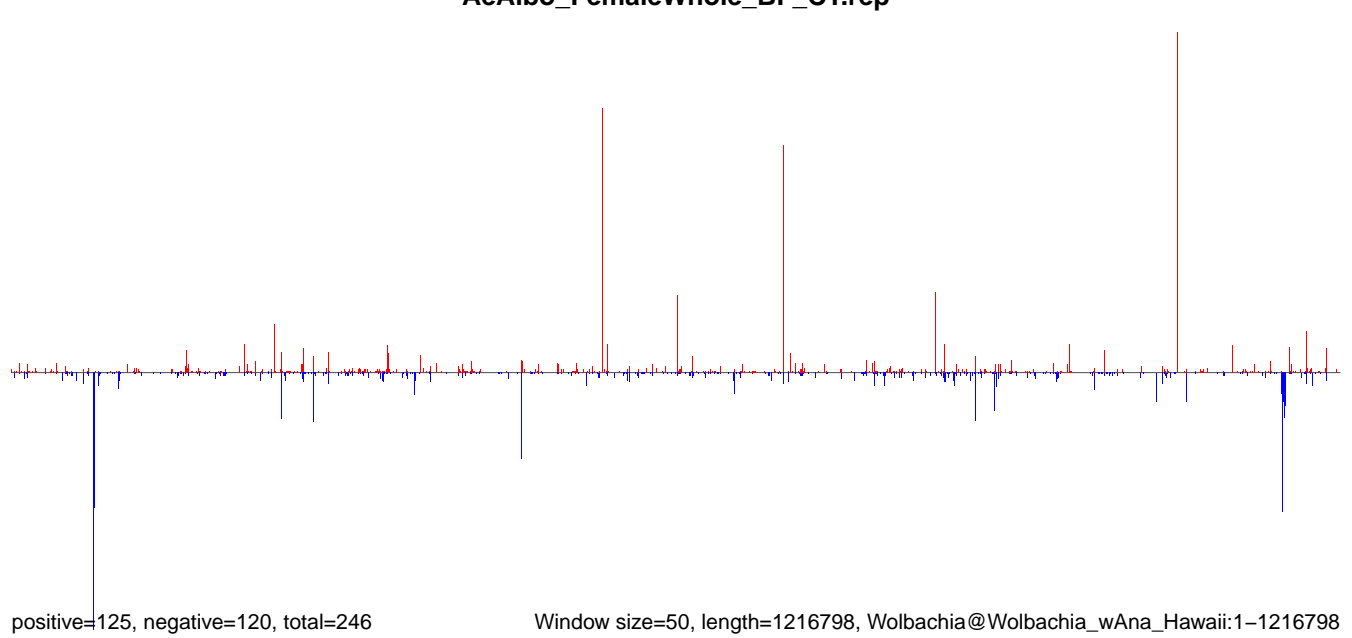
AeAlbo_FemaleWhole_BF_CT.18_23.rep



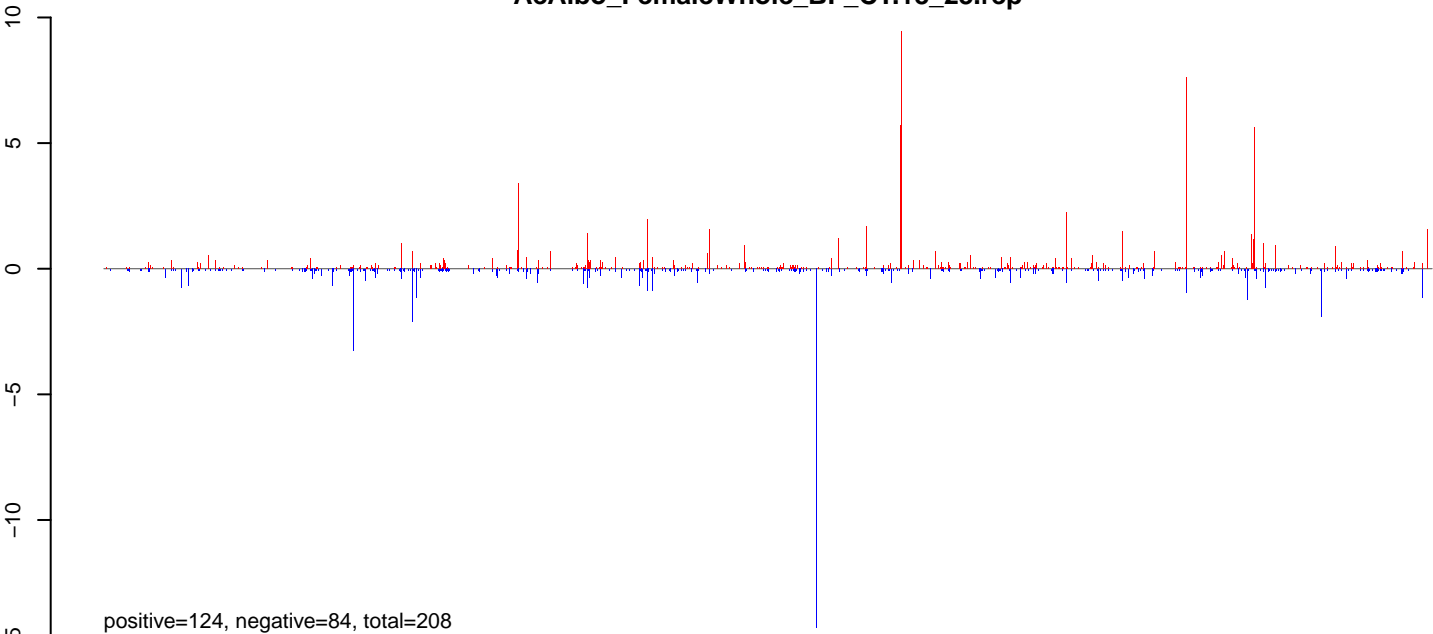
AeAlbo_FemaleWhole_BF_CT.24_35.rep



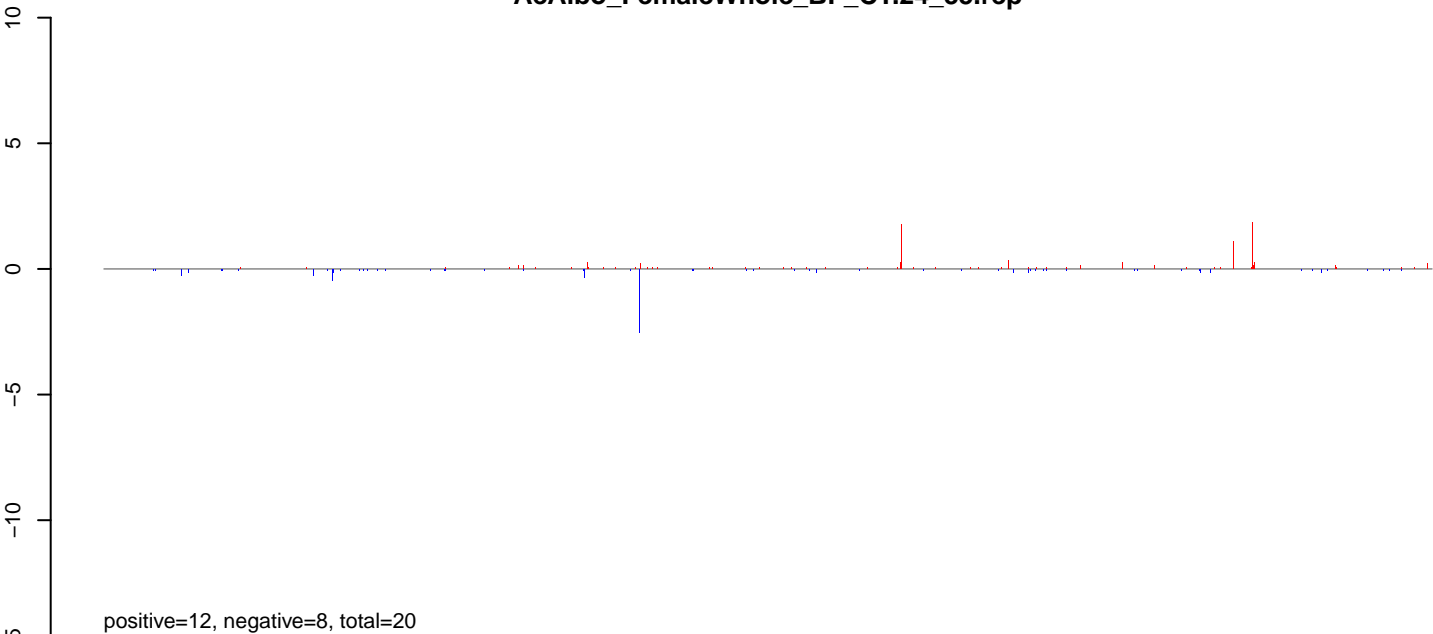
AeAlbo_FemaleWhole_BF_CT.rep



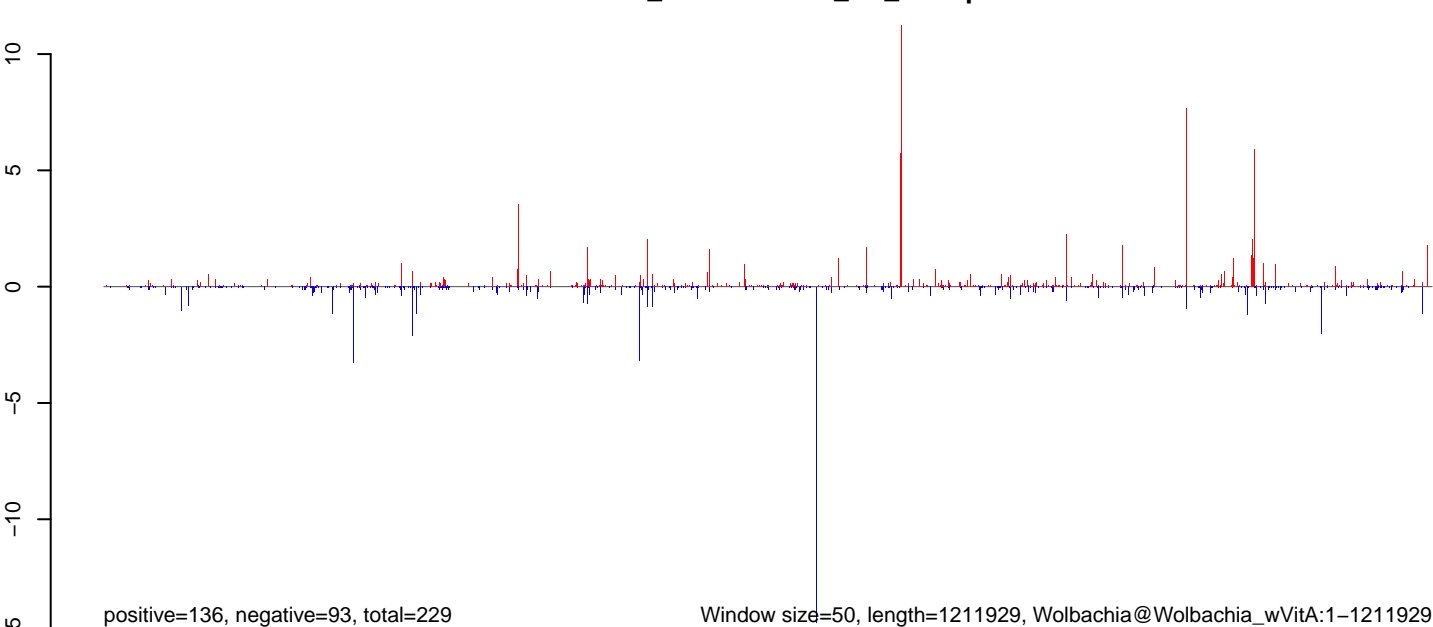
AeAlbo_FemaleWhole_BF_CT.18_23.rep



AeAlbo_FemaleWhole_BF_CT.24_35.rep

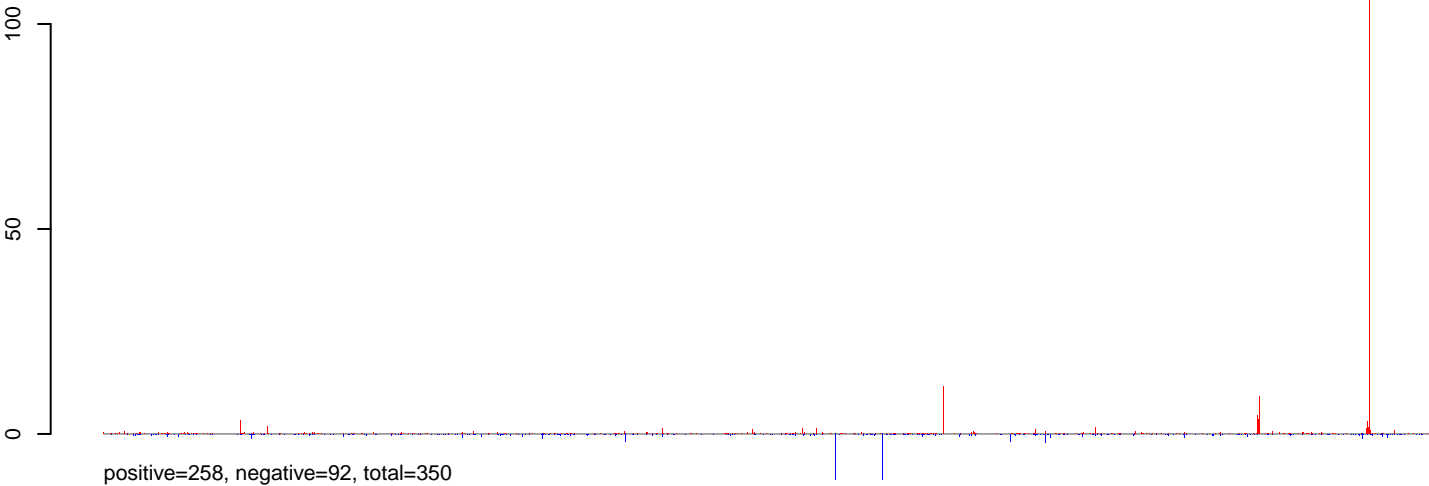


AeAlbo_FemaleWhole_BF_CT.rep

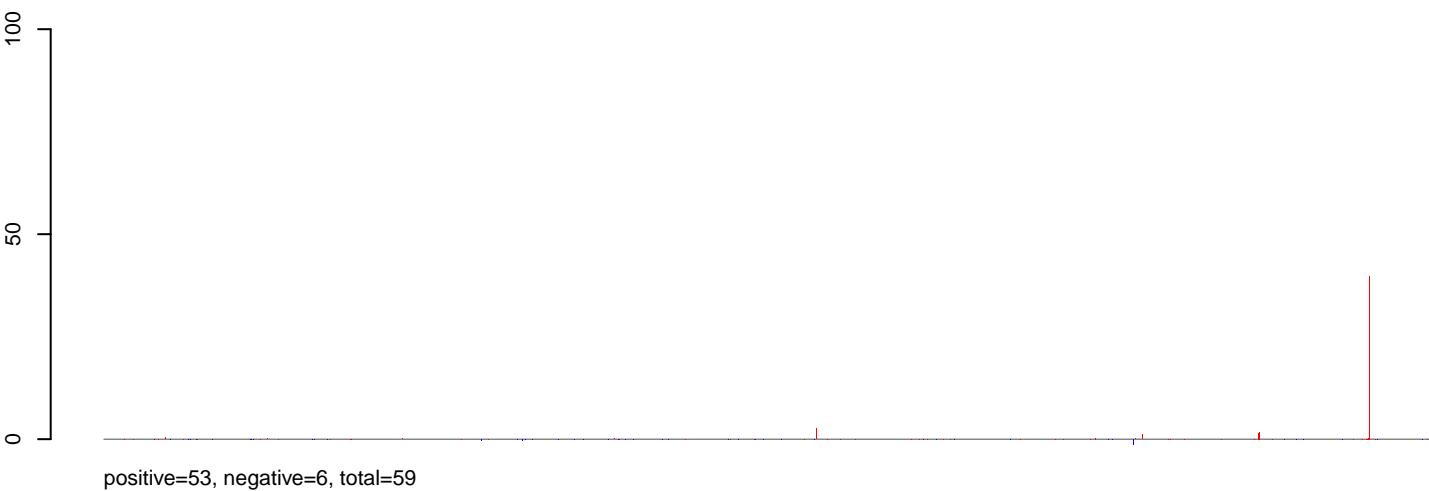


0 200000 400000 600000 800000 1000000 1200000

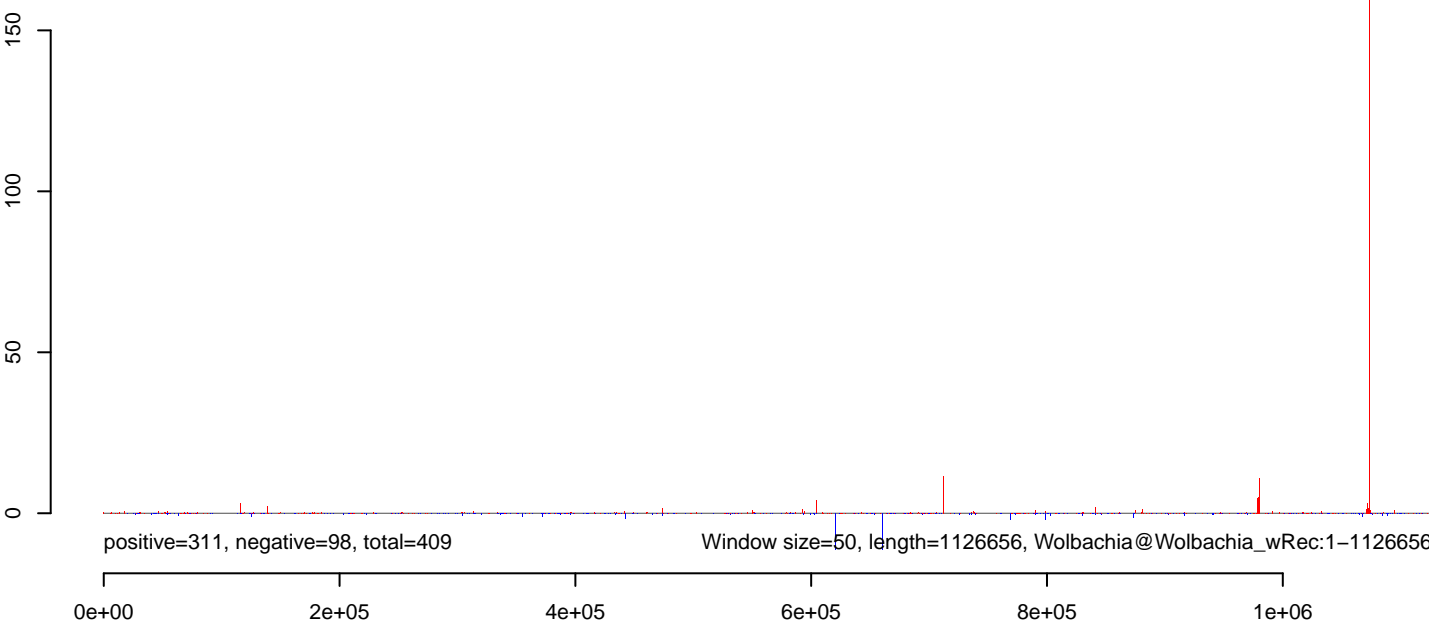
AeAlbo_FemaleWhole_BF_CT.18_23.rep



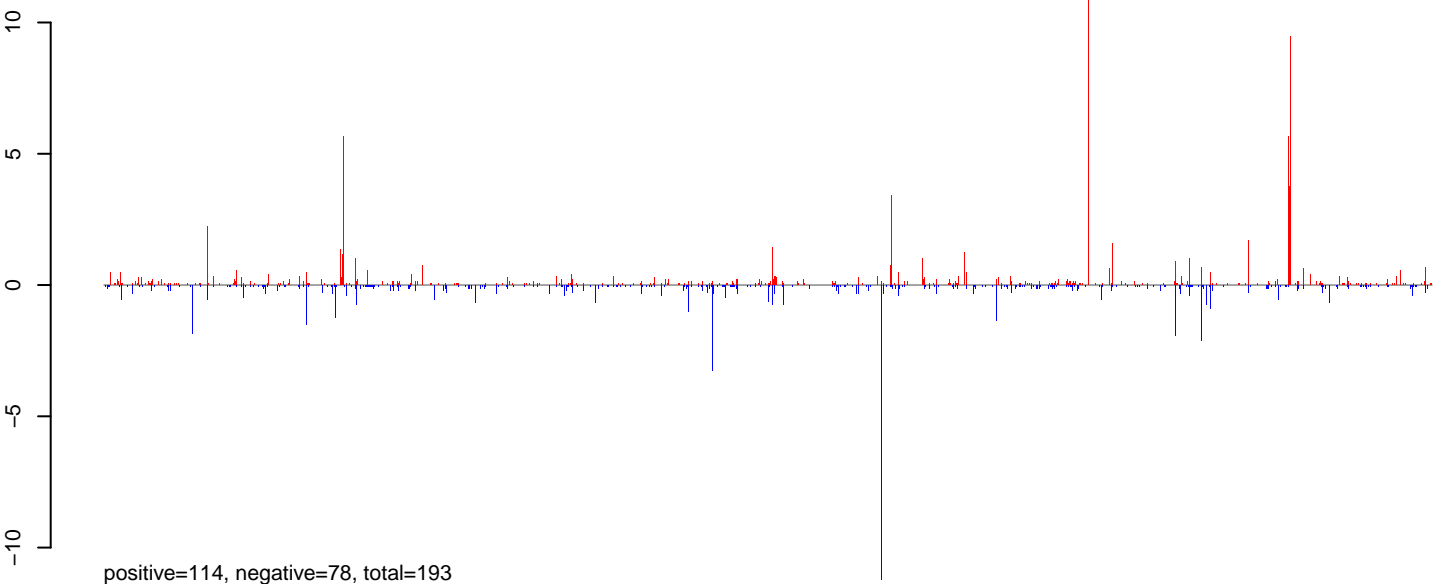
AeAlbo_FemaleWhole_BF_CT.24_35.rep



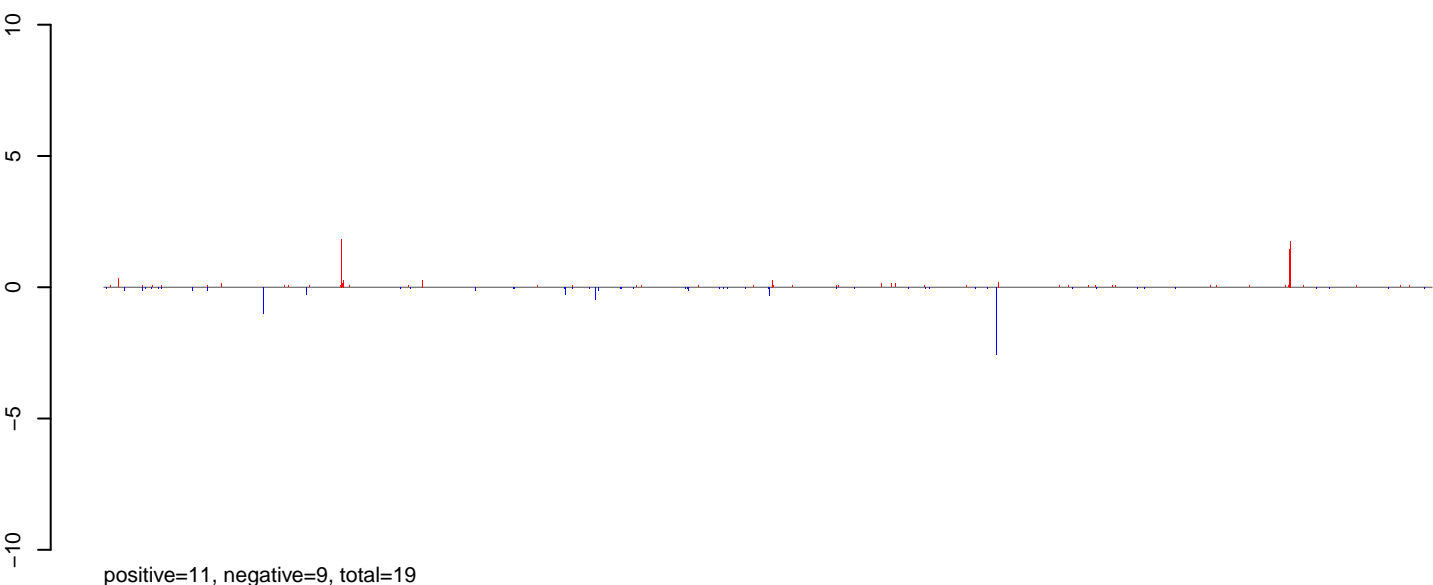
AeAlbo_FemaleWhole_BF_CT.rep



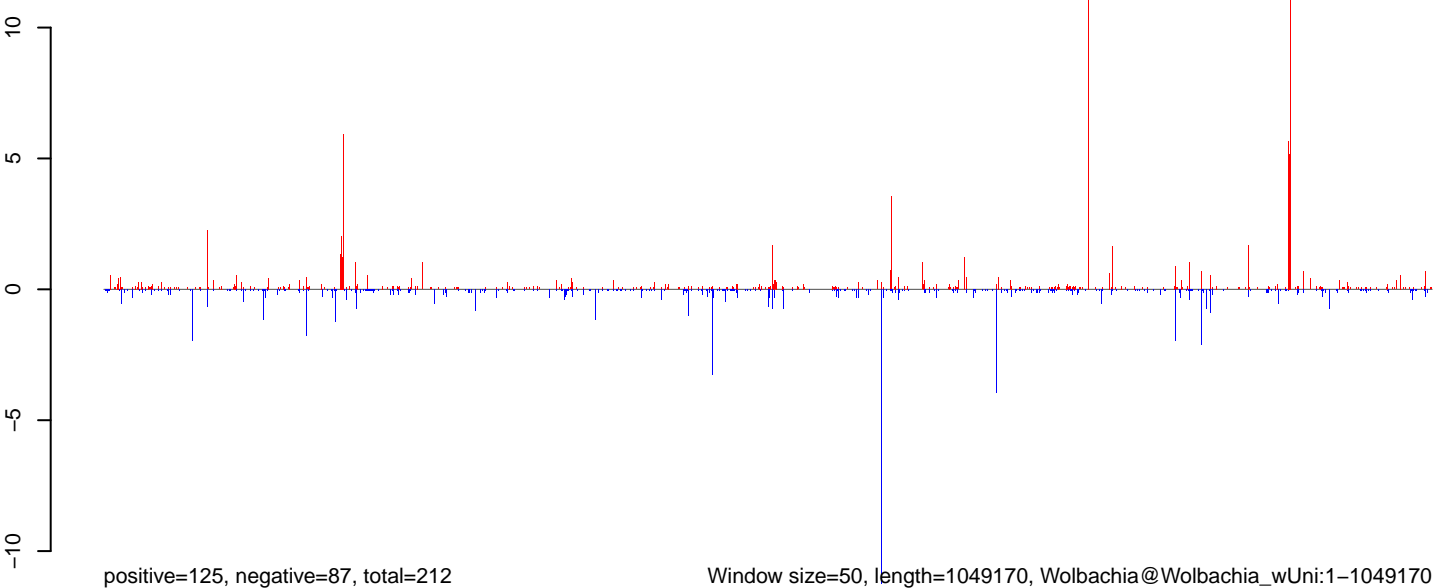
AeAlbo_FemaleWhole_BF_CT.18_23.rep



AeAlbo_FemaleWhole_BF_CT.24_35.rep

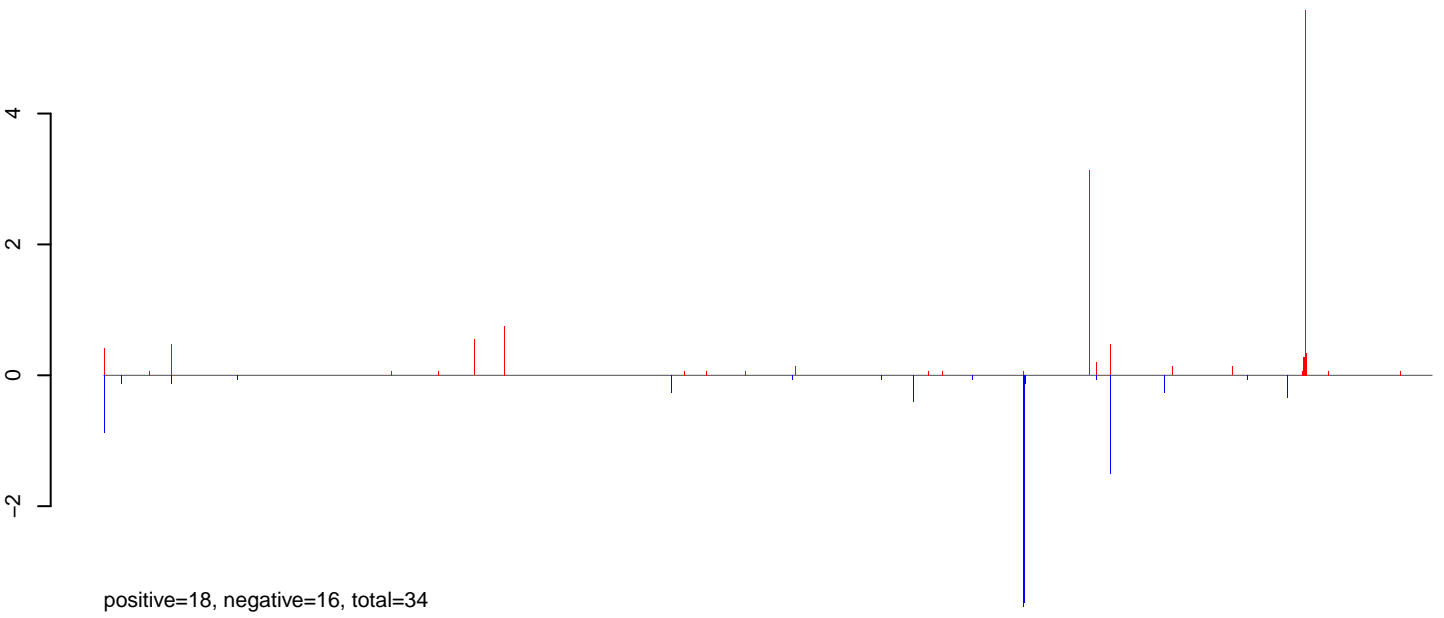


AeAlbo_FemaleWhole_BF_CT.rep

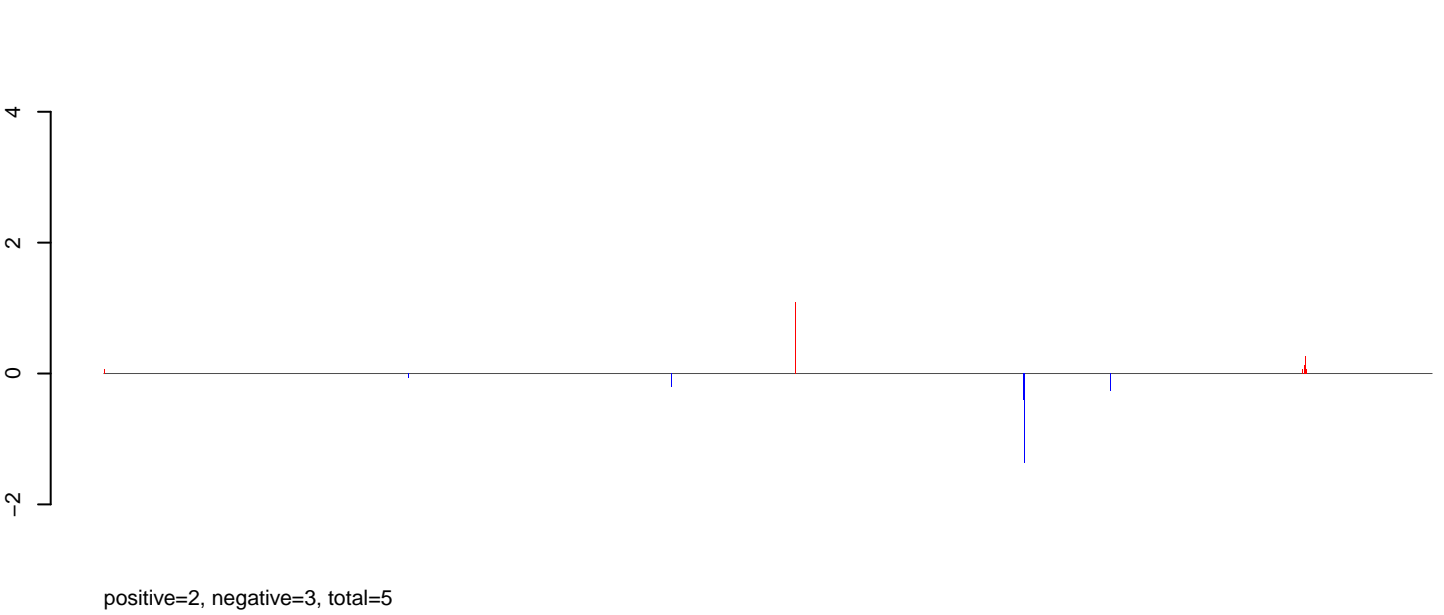


0e+00 2e+05 4e+05 6e+05 8e+05 1e+06

AeAlbo_FemaleWhole_BF_CT.18_23.rep



AeAlbo_FemaleWhole_BF_CT.24_35.rep



AeAlbo_FemaleWhole_BF_CT.rep

