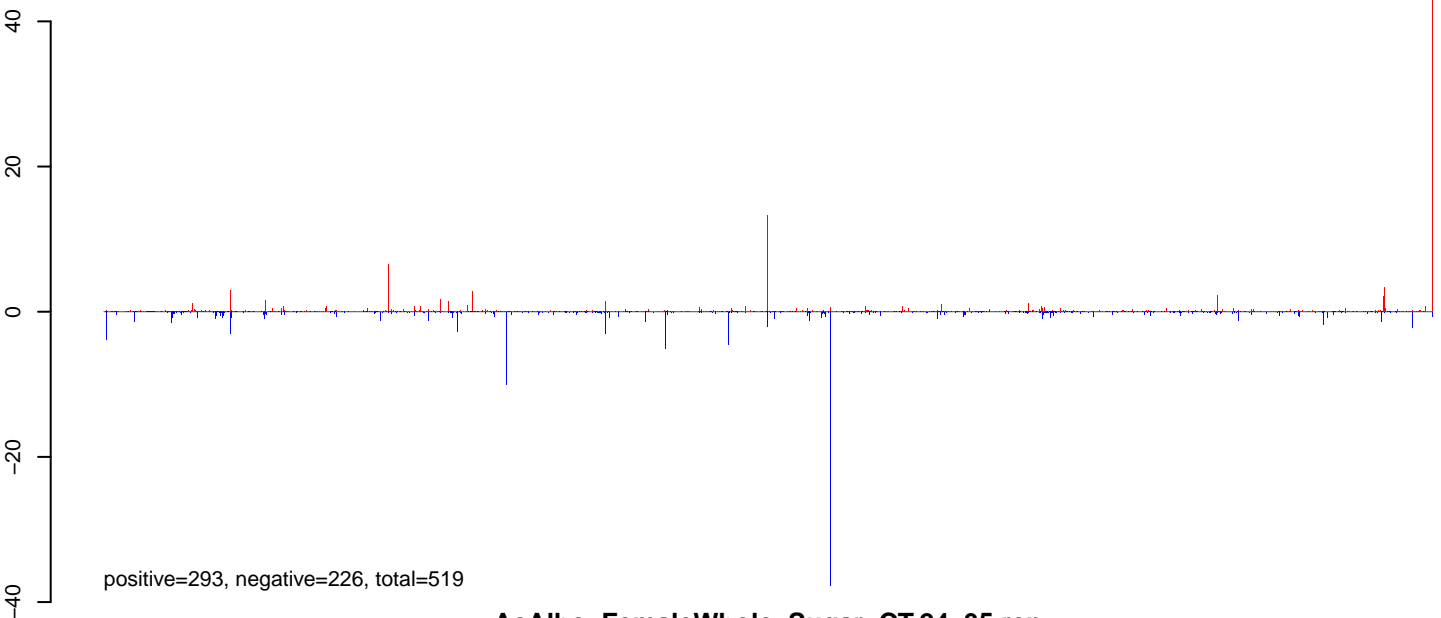
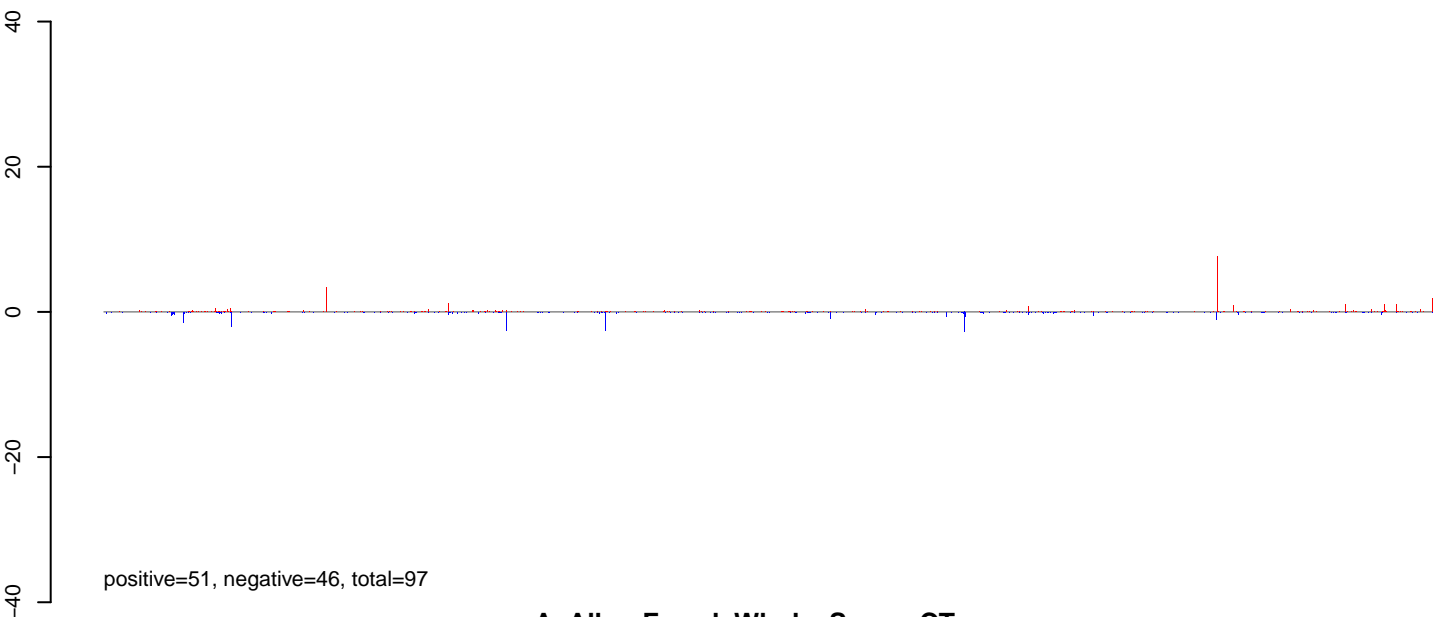


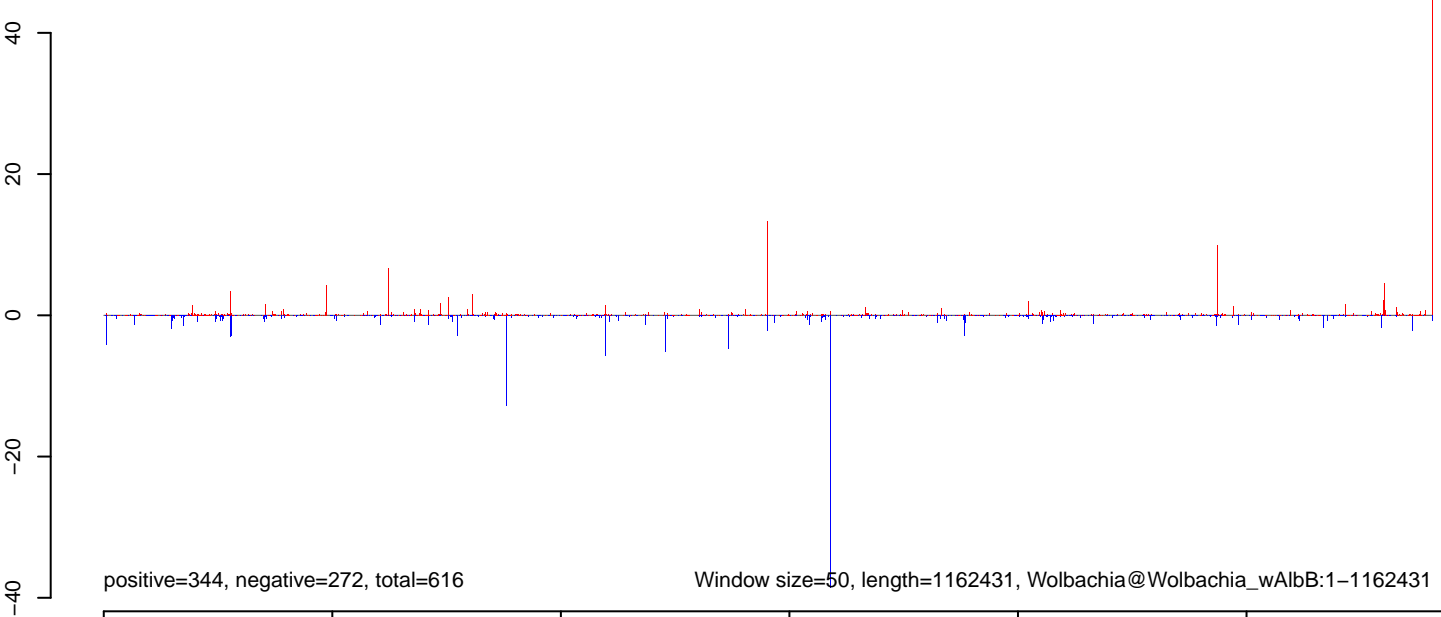
AeAlbo_FemaleWhole_Sugar_CT.18_23.rep



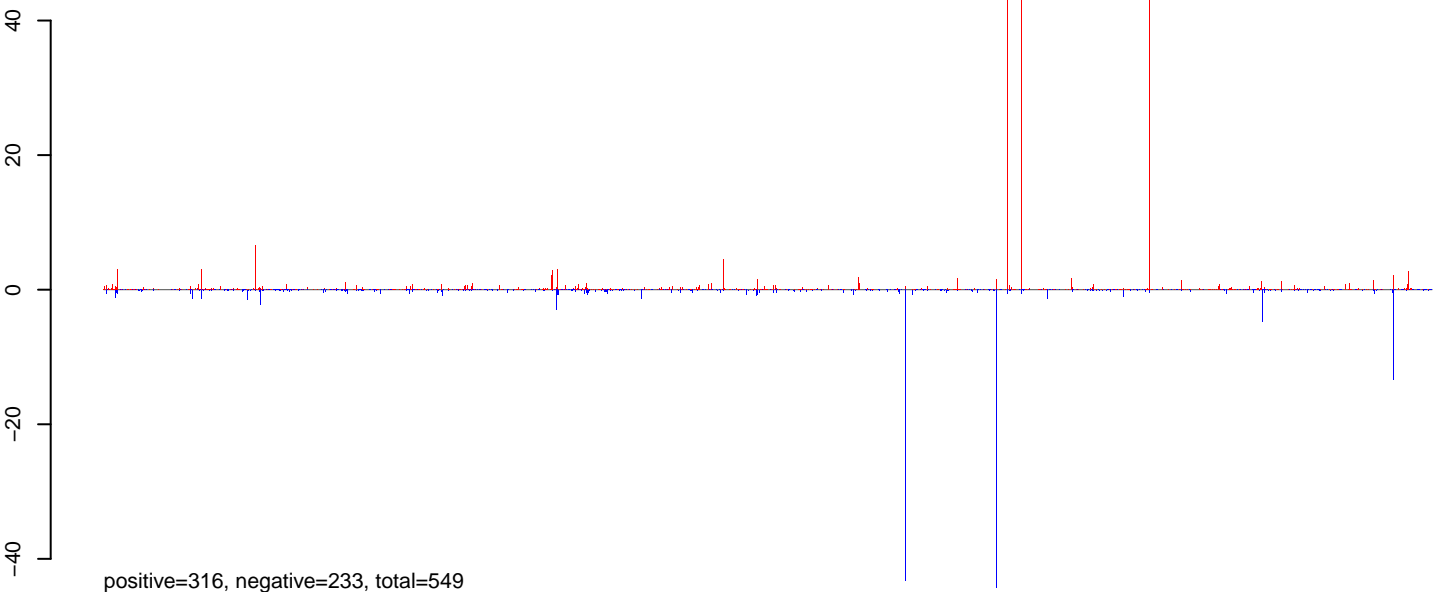
AeAlbo_FemaleWhole_Sugar_CT.24_35.rep



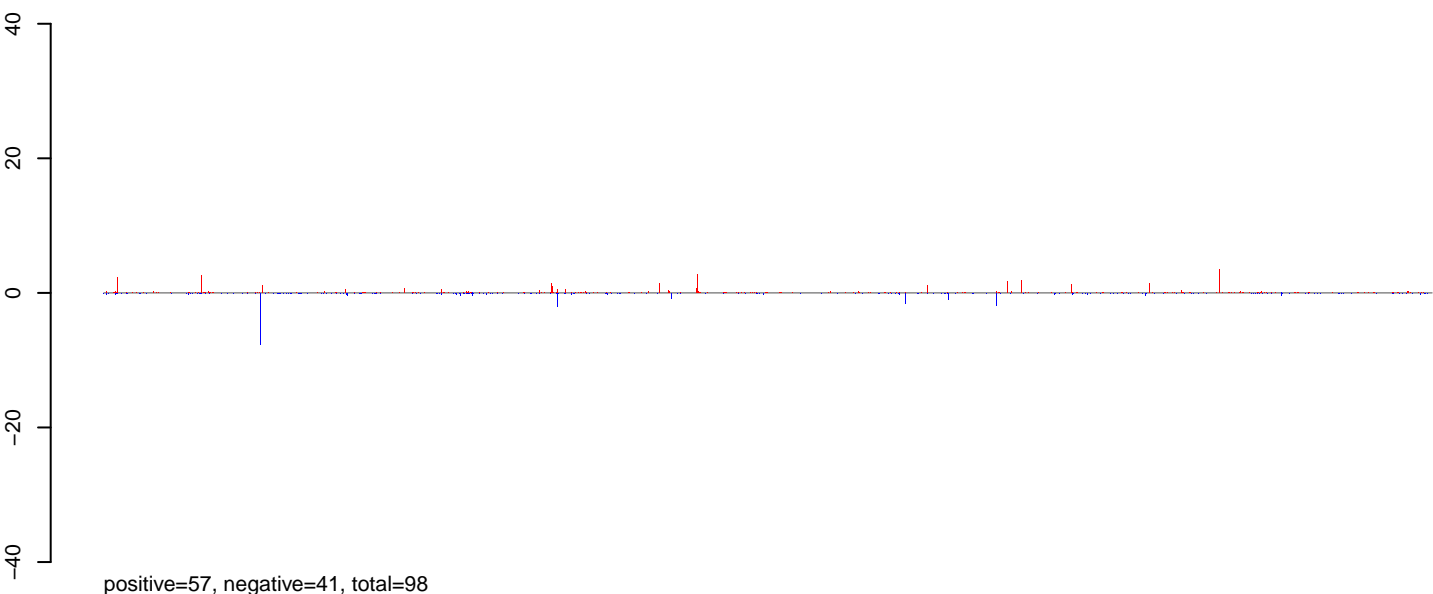
AeAlbo_FemaleWhole_Sugar_CT.rep



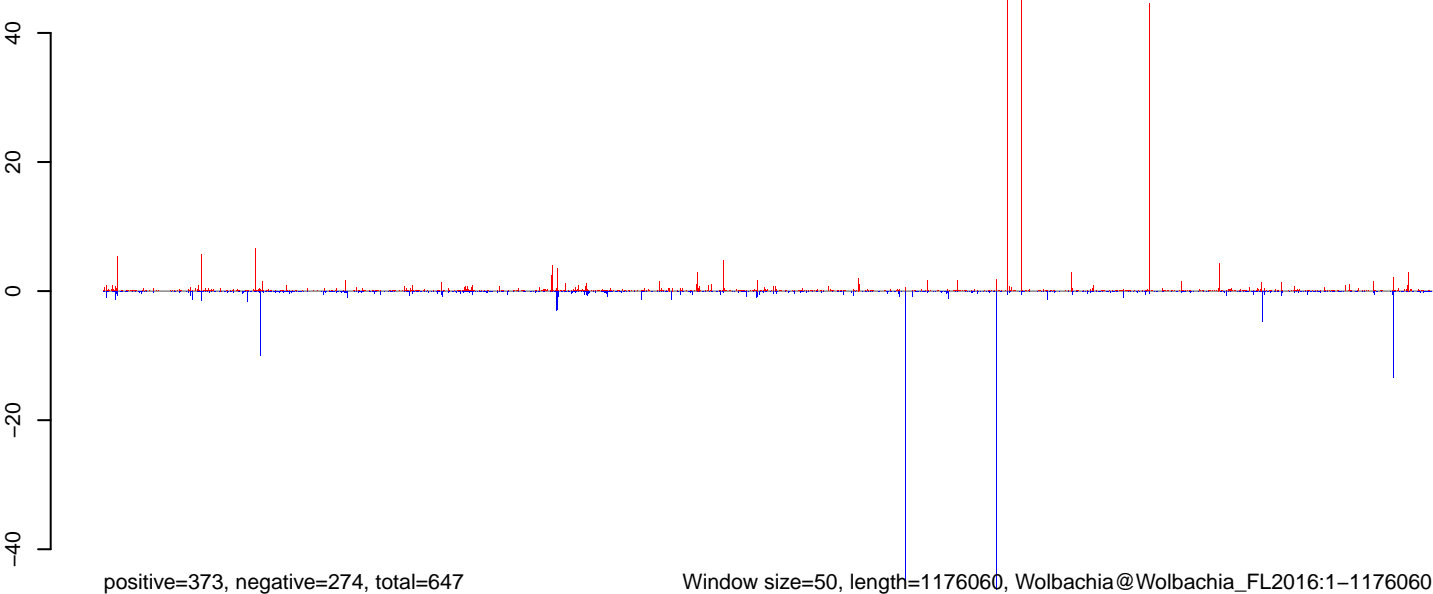
AeAlbo_FemaleWhole_Sugar_CT.18_23.rep



AeAlbo_FemaleWhole_Sugar_CT.24_35.rep



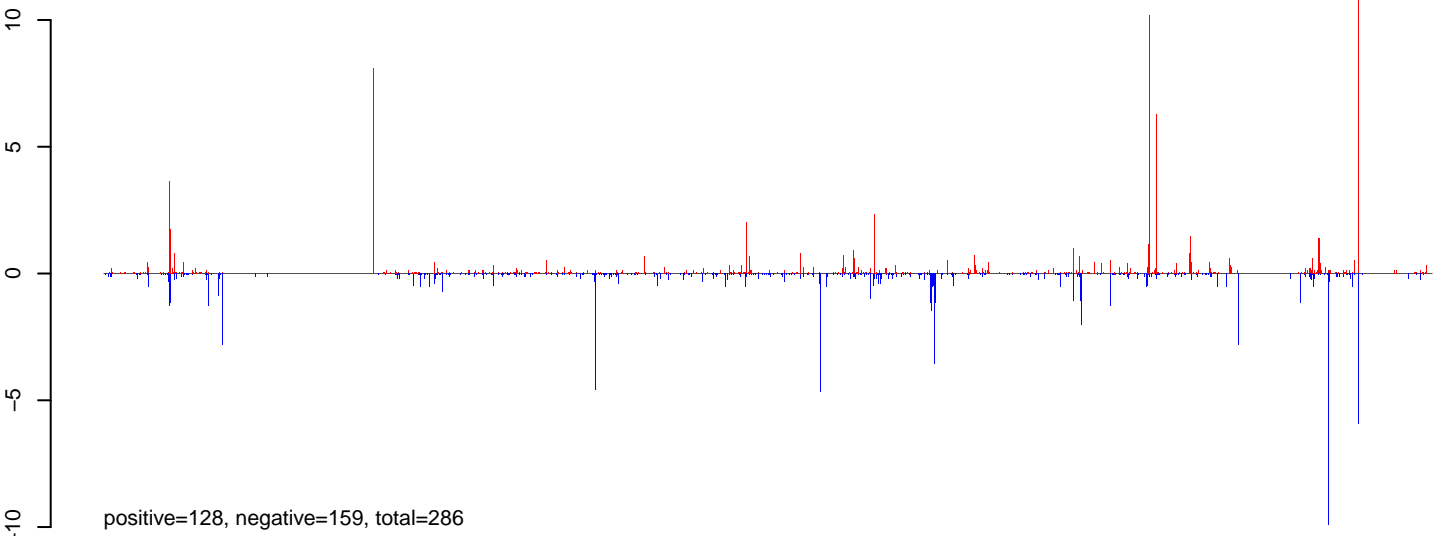
AeAlbo_FemaleWhole_Sugar_CT.rep



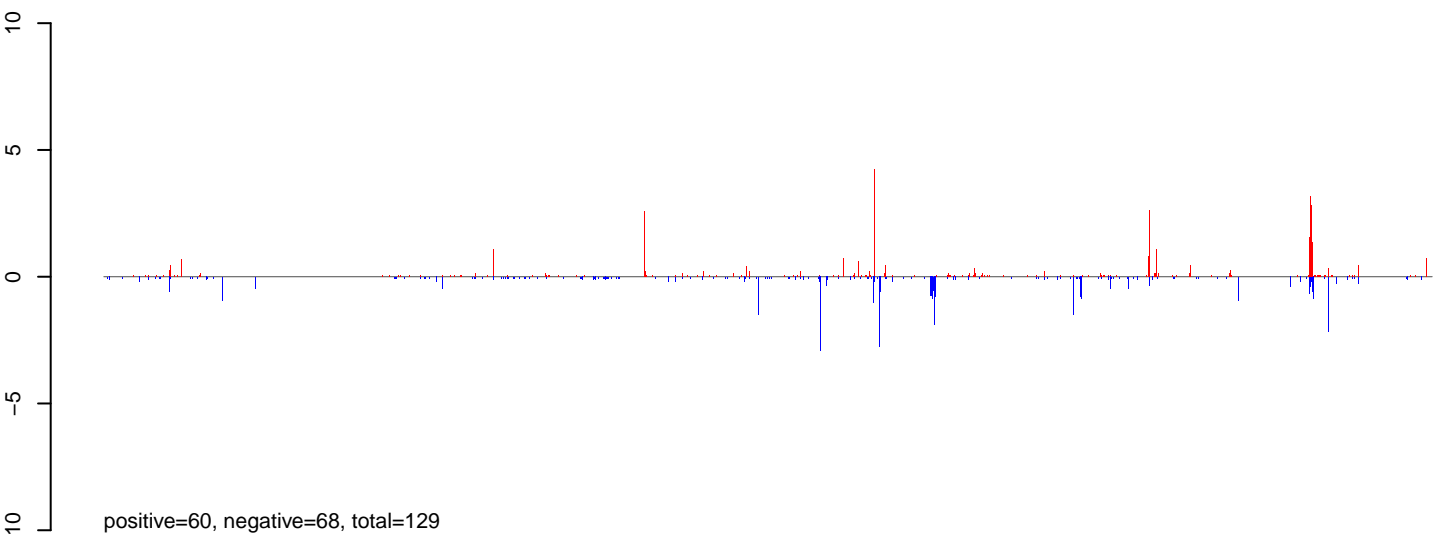
Window size=50, length=1176060, Wolbachia@Wolbachia_FL2016:1-1176060

0 200000 400000 600000 800000 1000000 1200000

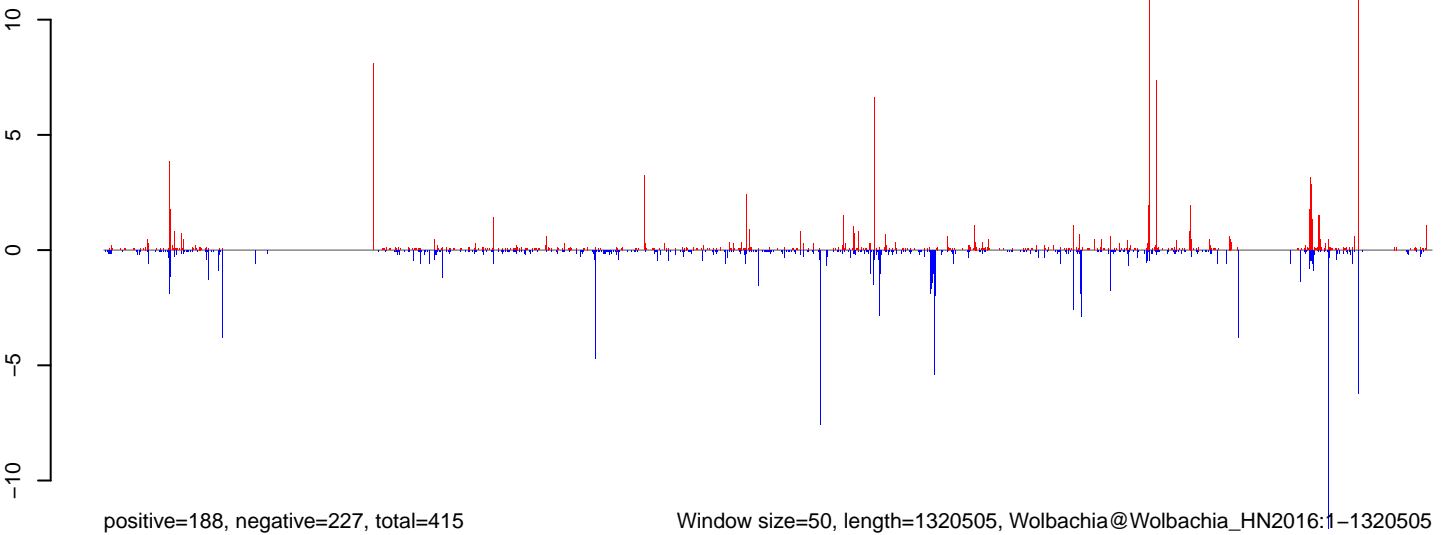
AeAlbo_FemaleWhole_Sugar_CT.18_23.rep



AeAlbo_FemaleWhole_Sugar_CT.24_35.rep



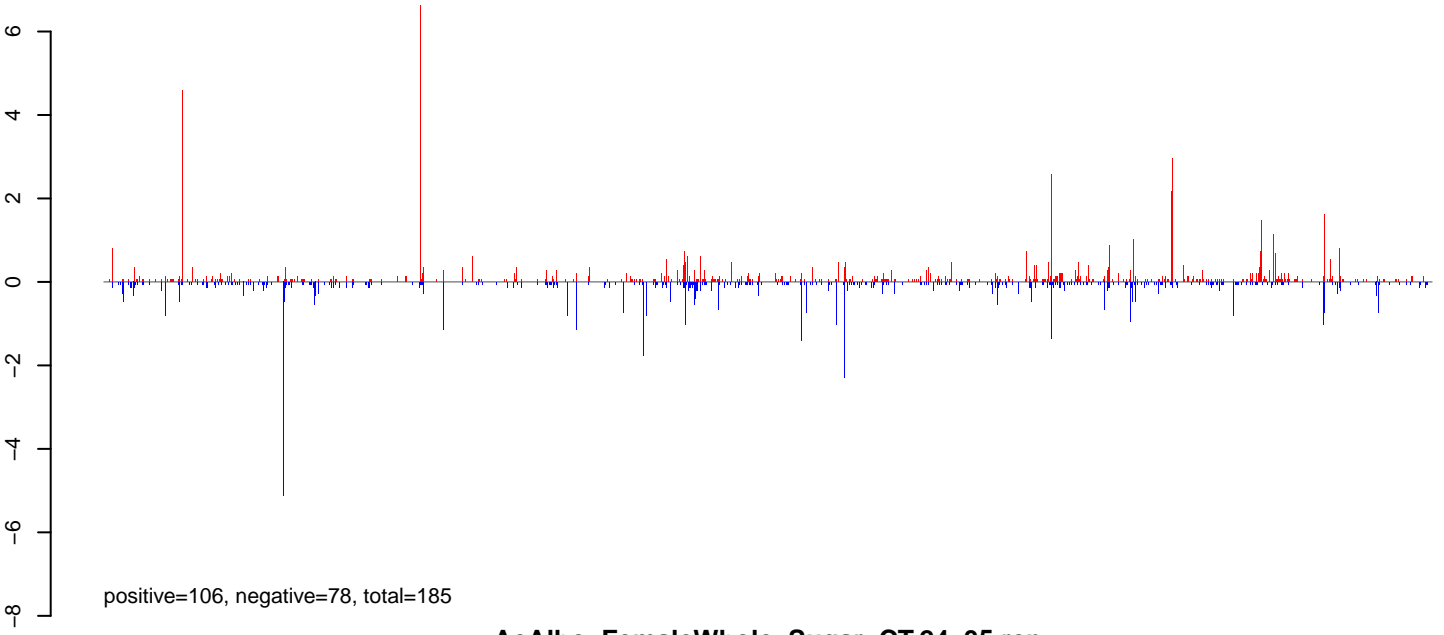
AeAlbo_FemaleWhole_Sugar_CT.rep



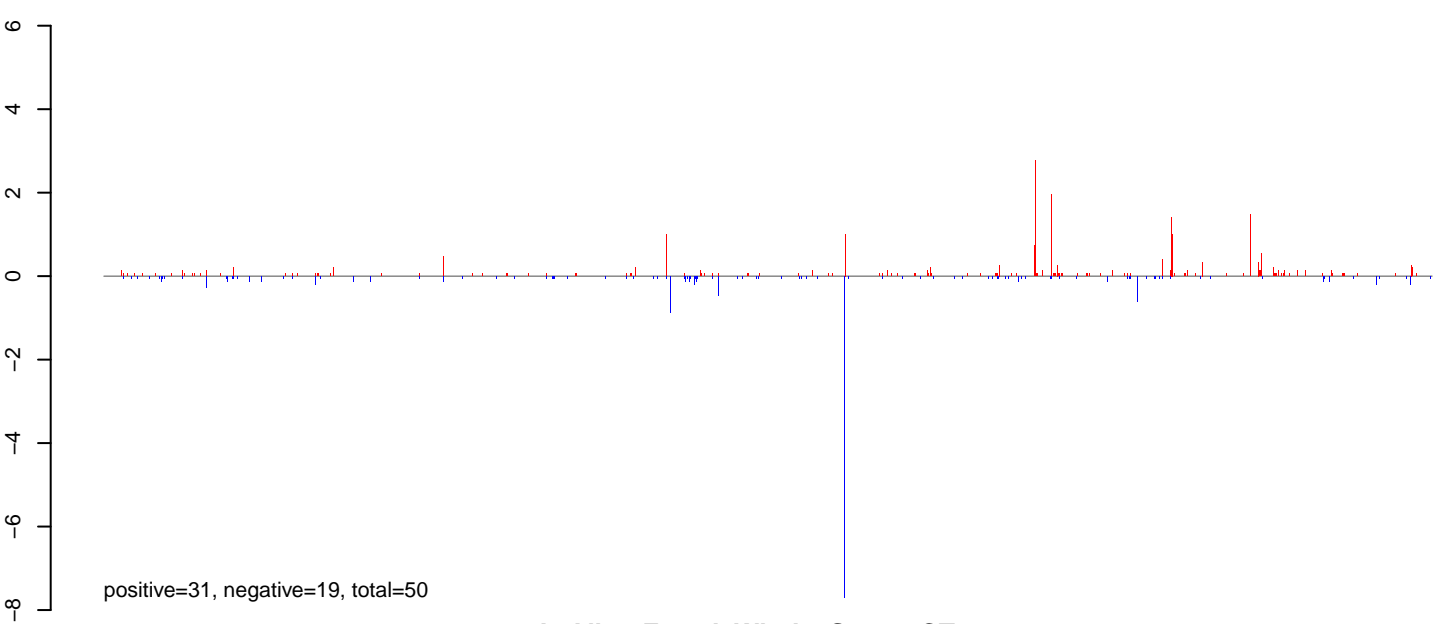
Window size=50, length=1320505, Wolbachia@Wolbachia_HN2016:1-1320505

0 200000 400000 600000 800000 1000000 1200000

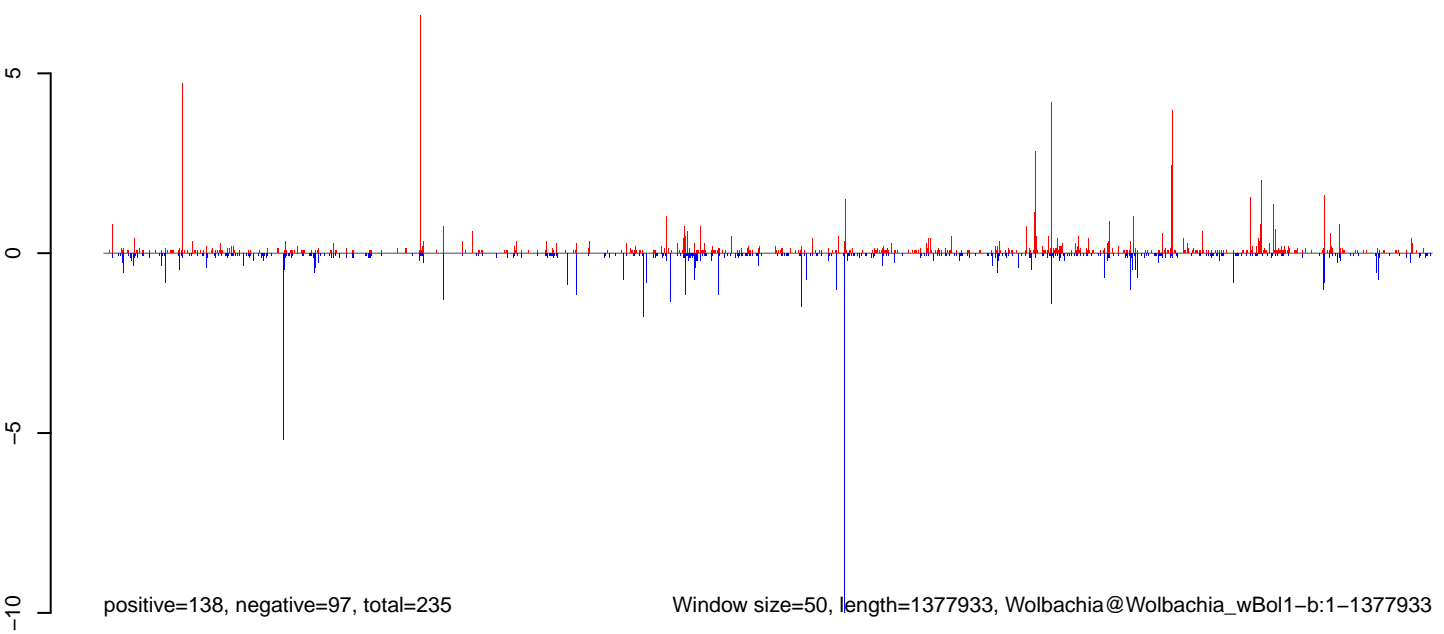
AeAlbo_FemaleWhole_Sugar_CT.18_23.rep



AeAlbo_FemaleWhole_Sugar_CT.24_35.rep

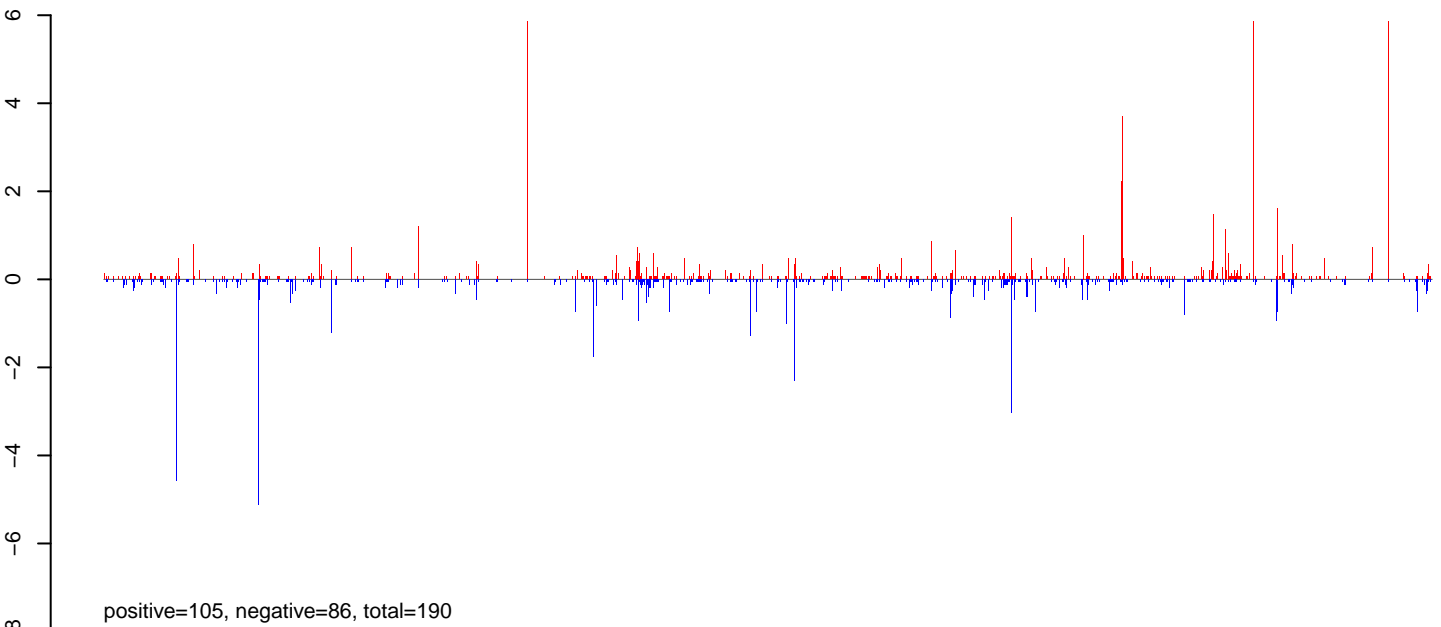


AeAlbo_FemaleWhole_Sugar_CT.rep

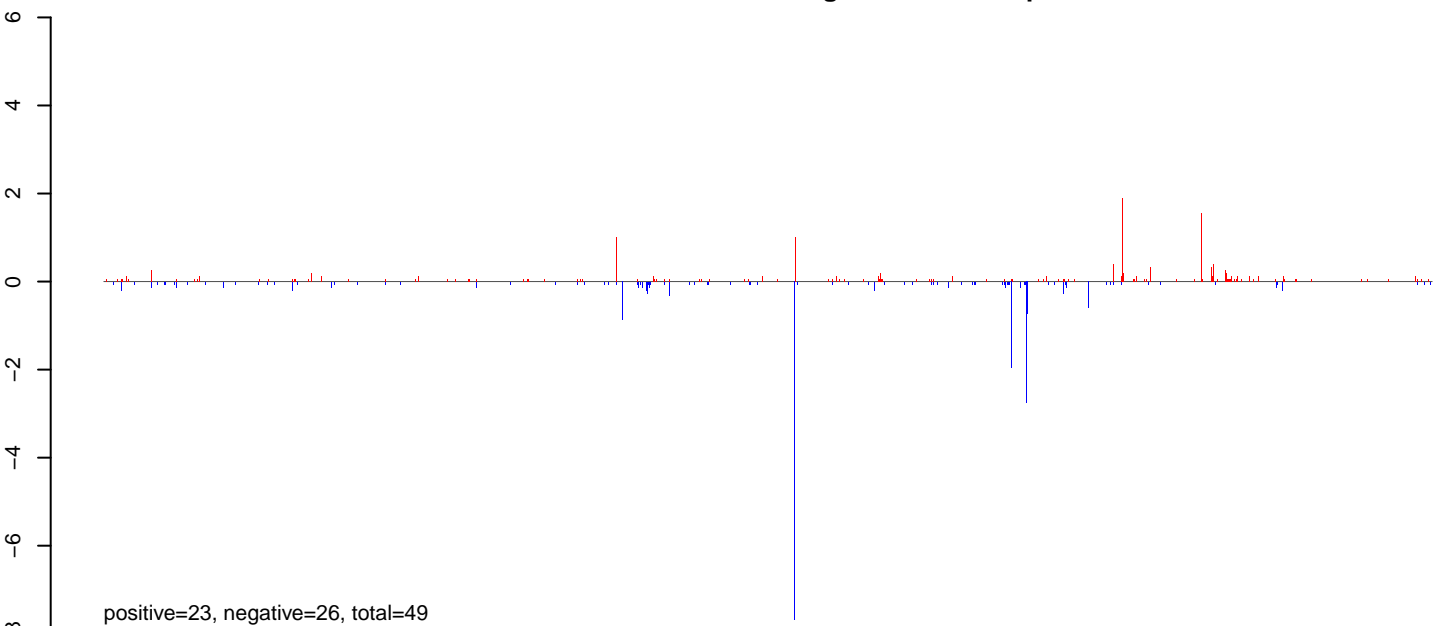


0 200000 400000 600000 800000 1000000 1200000 1400000

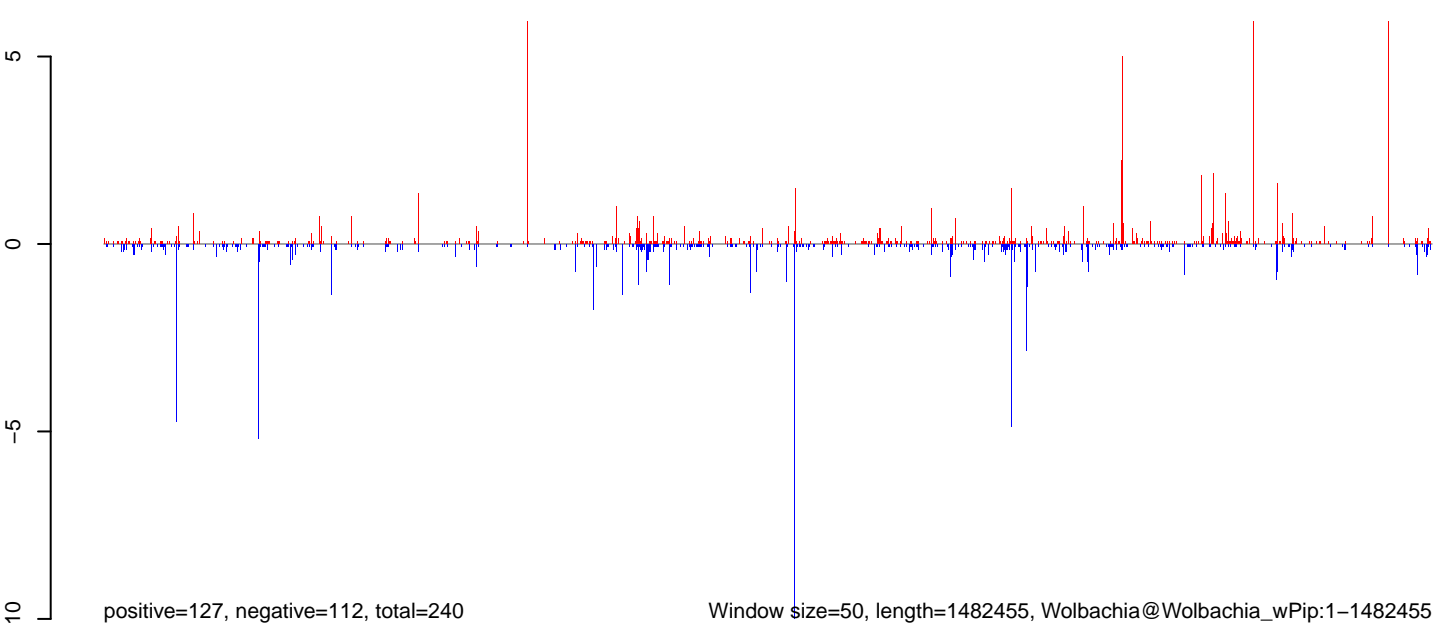
AeAlbo_FemaleWhole_Sugar_CT.18_23.rep



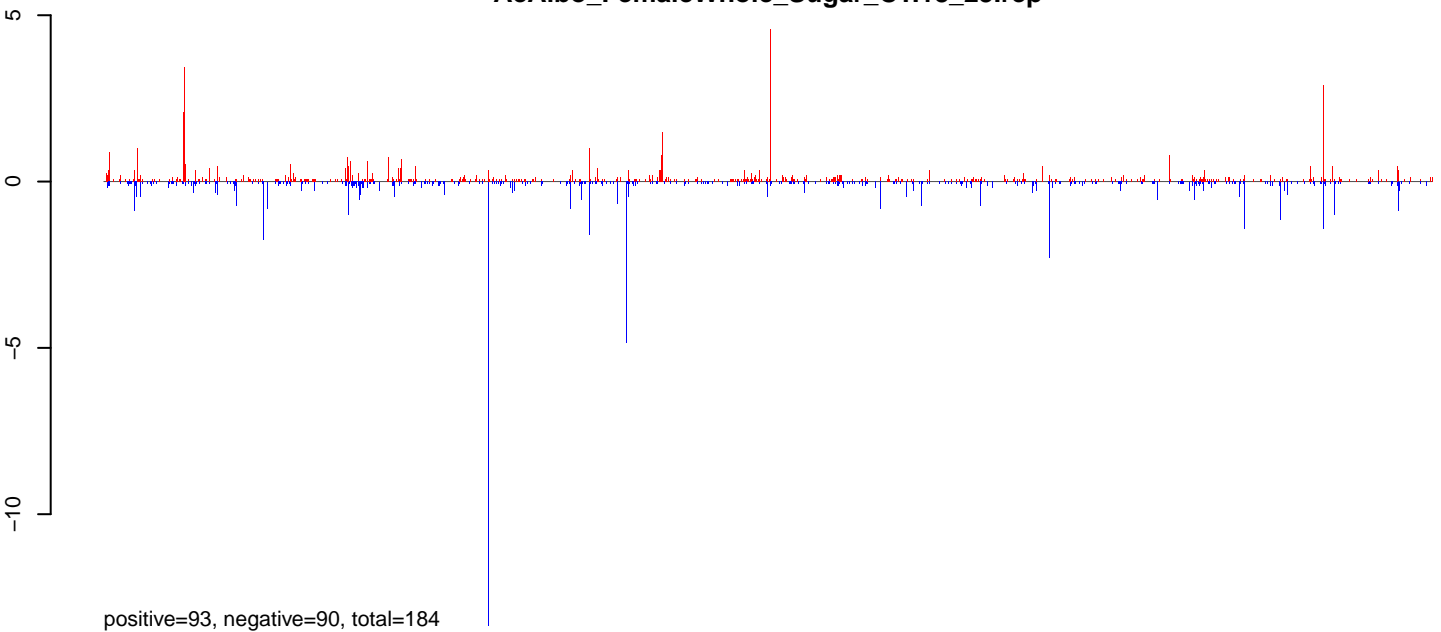
AeAlbo_FemaleWhole_Sugar_CT.24_35.rep



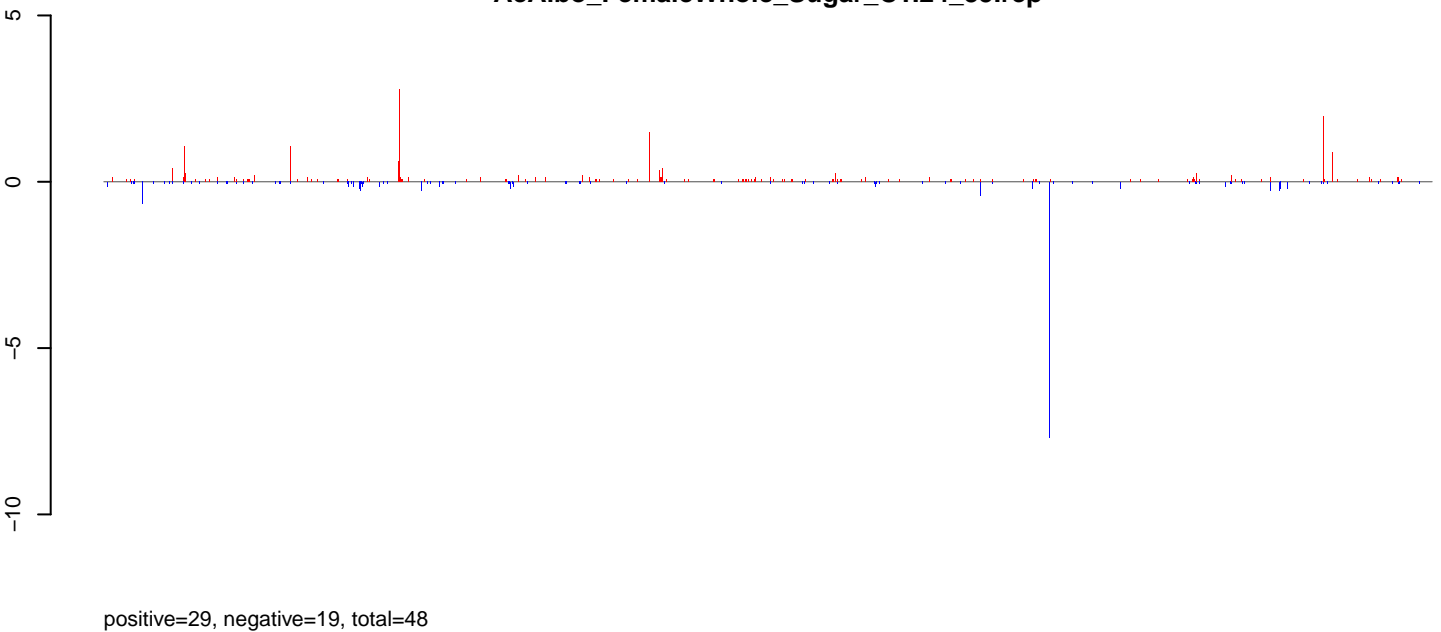
AeAlbo_FemaleWhole_Sugar_CT.rep



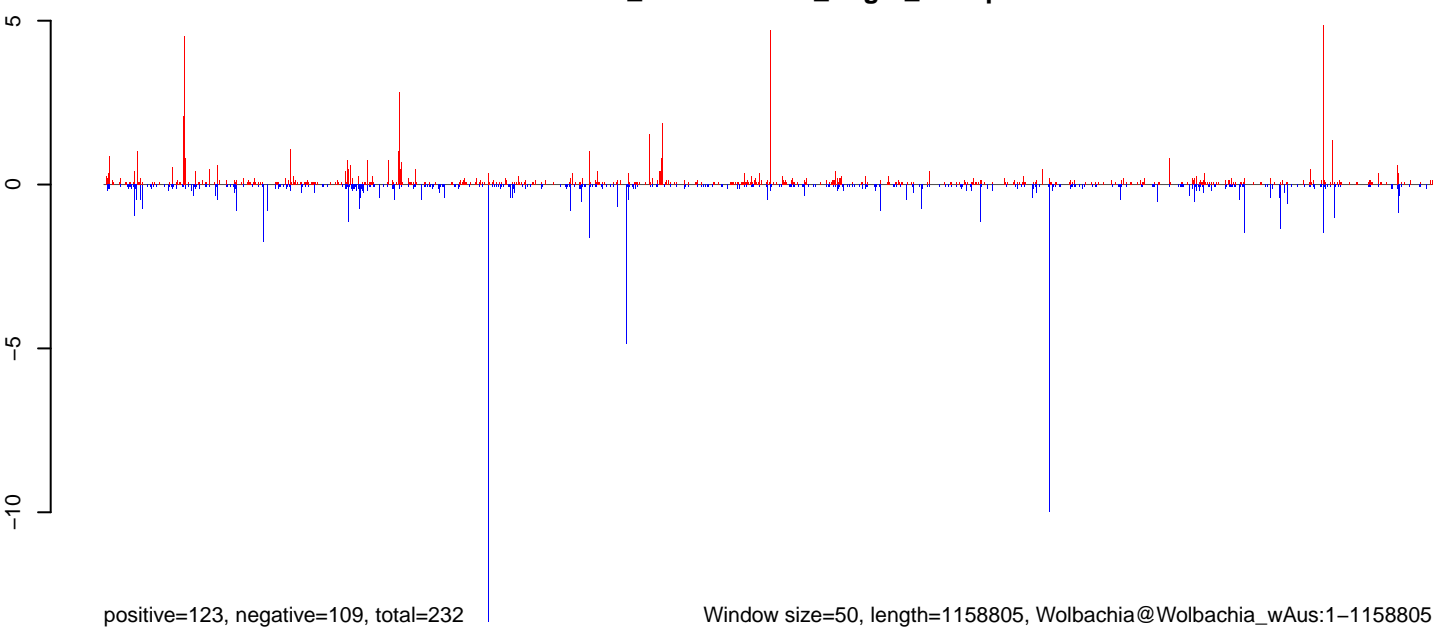
AeAlbo_FemaleWhole_Sugar_CT.18_23.rep



AeAlbo_FemaleWhole_Sugar_CT.24_35.rep



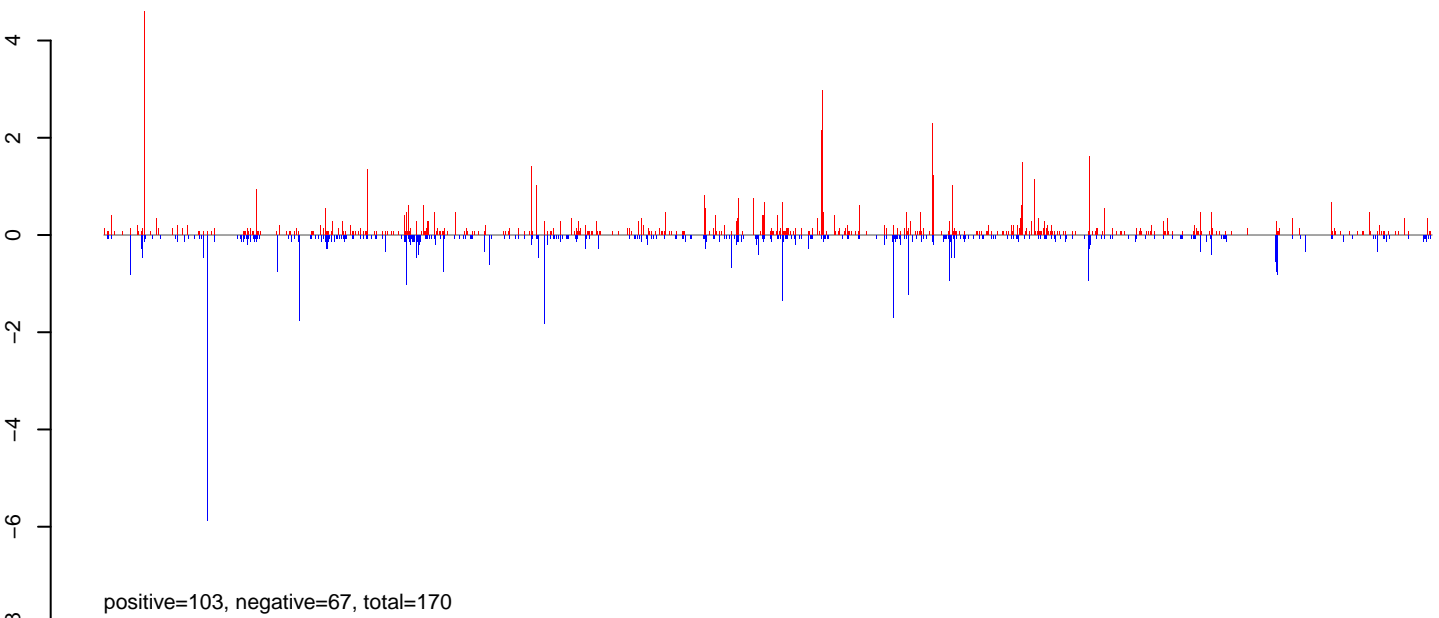
AeAlbo_FemaleWhole_Sugar_CT.rep



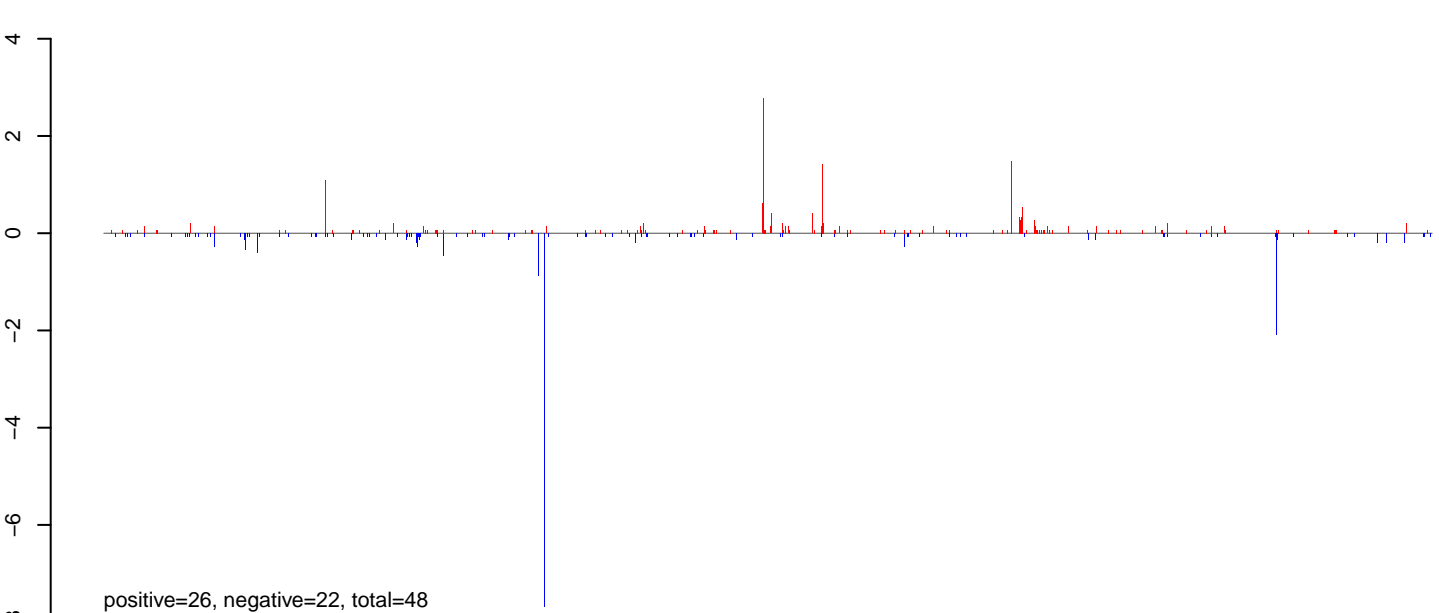
Window size=50, length=1158805, Wolbachia@Wolbachia_wAus:1-1158805

0 200000 400000 600000 800000 1000000 1200000

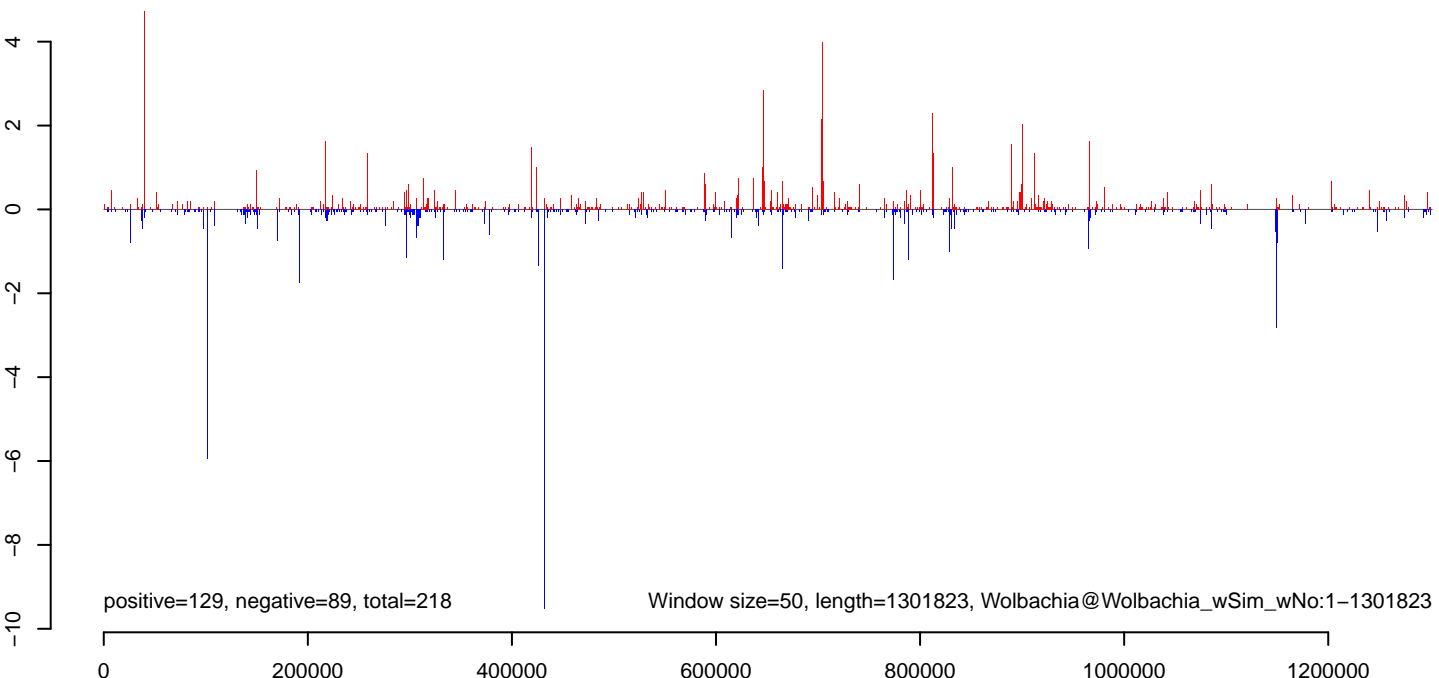
AeAlbo_FemaleWhole_Sugar_CT.18_23.rep



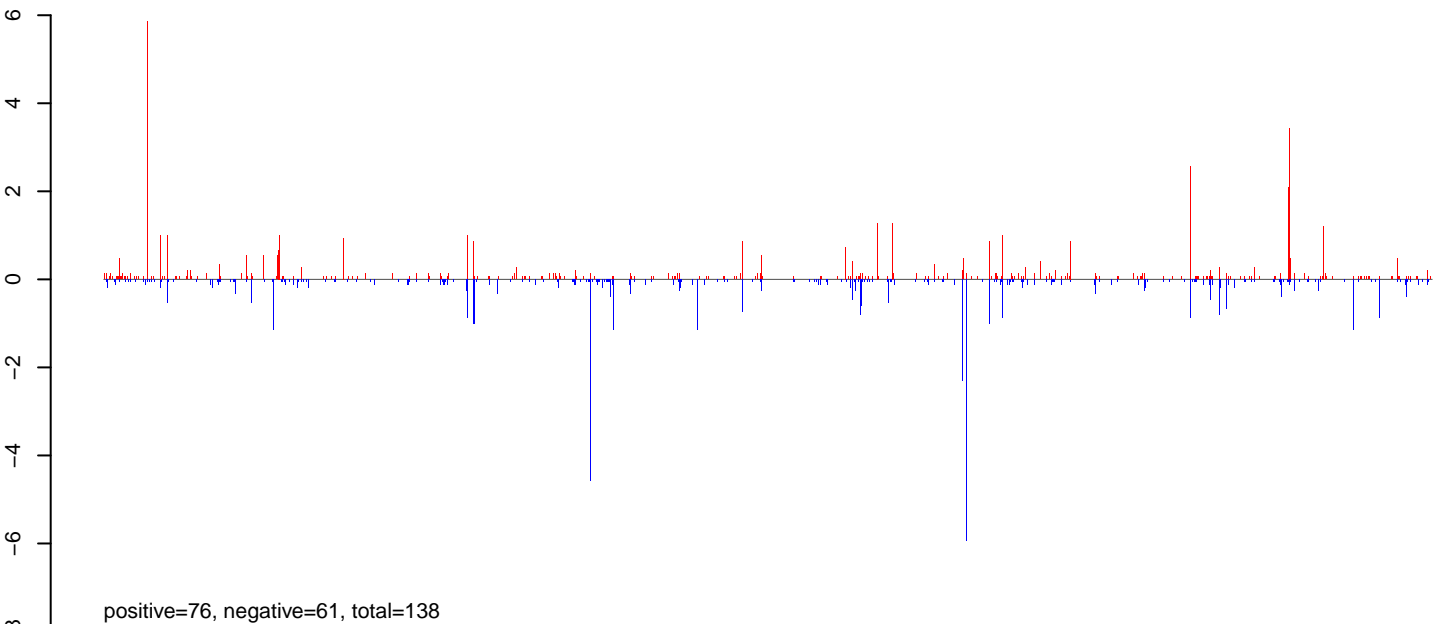
AeAlbo_FemaleWhole_Sugar_CT.24_35.rep



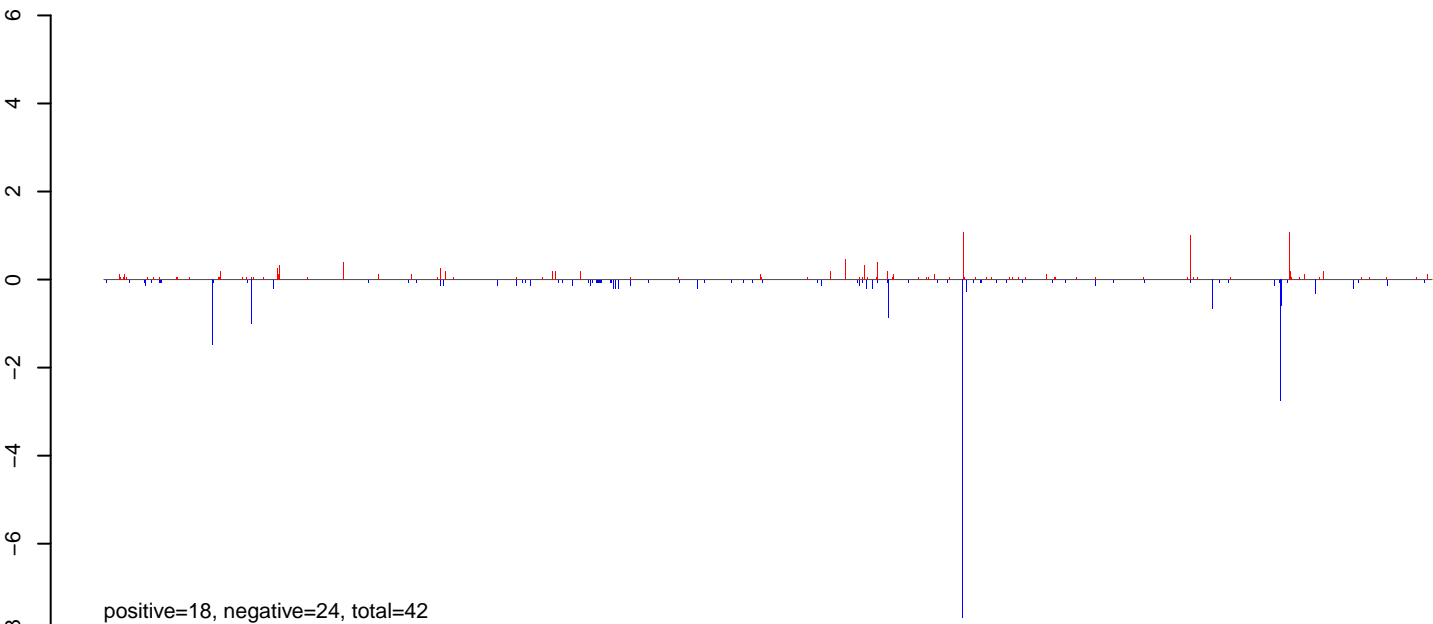
AeAlbo_FemaleWhole_Sugar_CT.rep



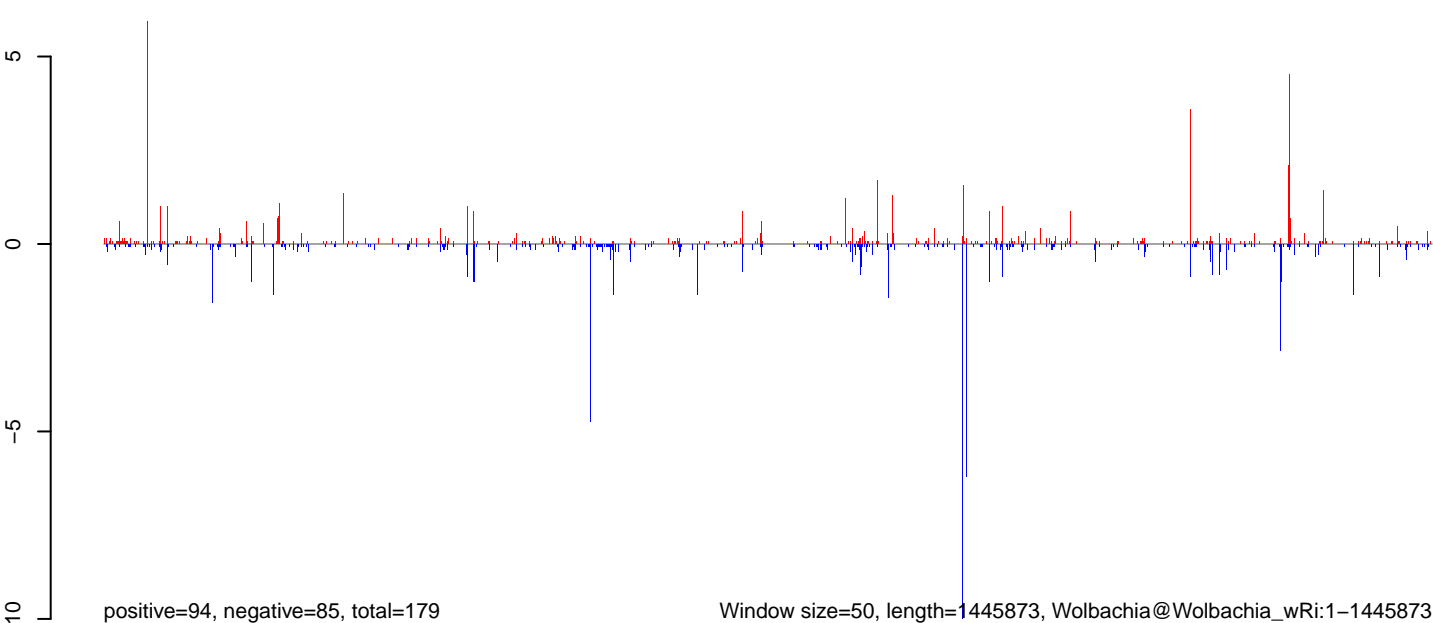
AeAlbo_FemaleWhole_Sugar_CT.18_23.rep



AeAlbo_FemaleWhole_Sugar_CT.24_35.rep

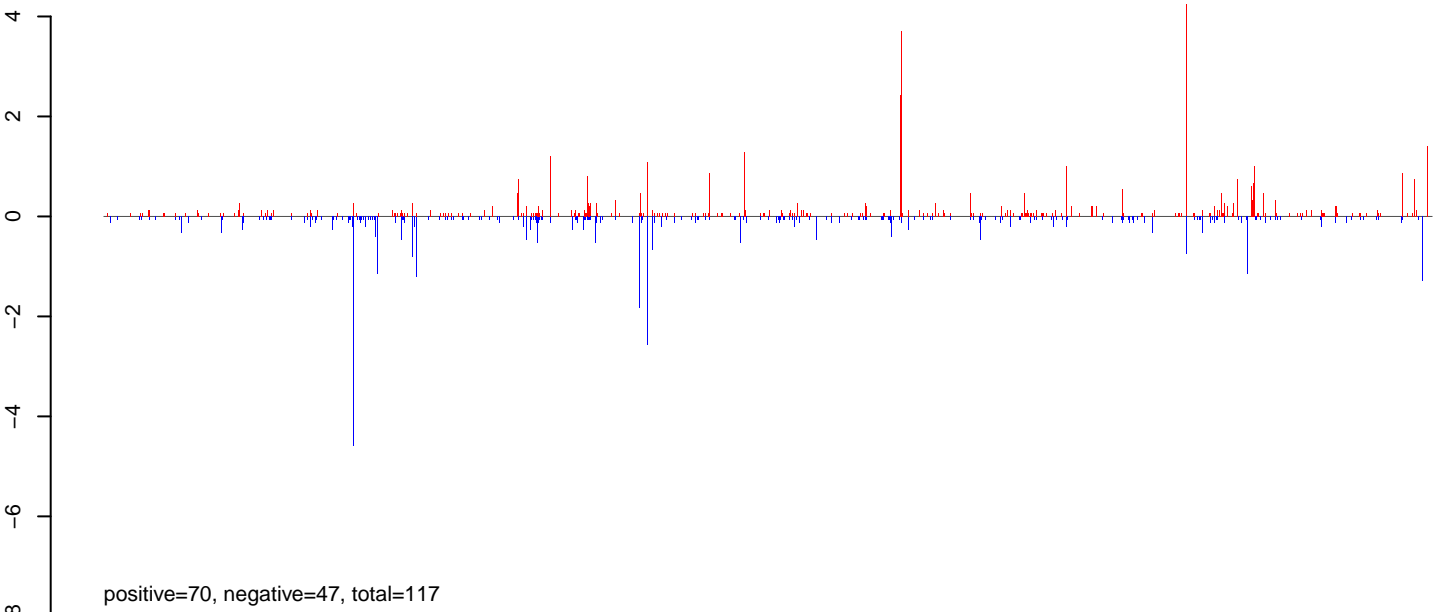


AeAlbo_FemaleWhole_Sugar_CT.rep

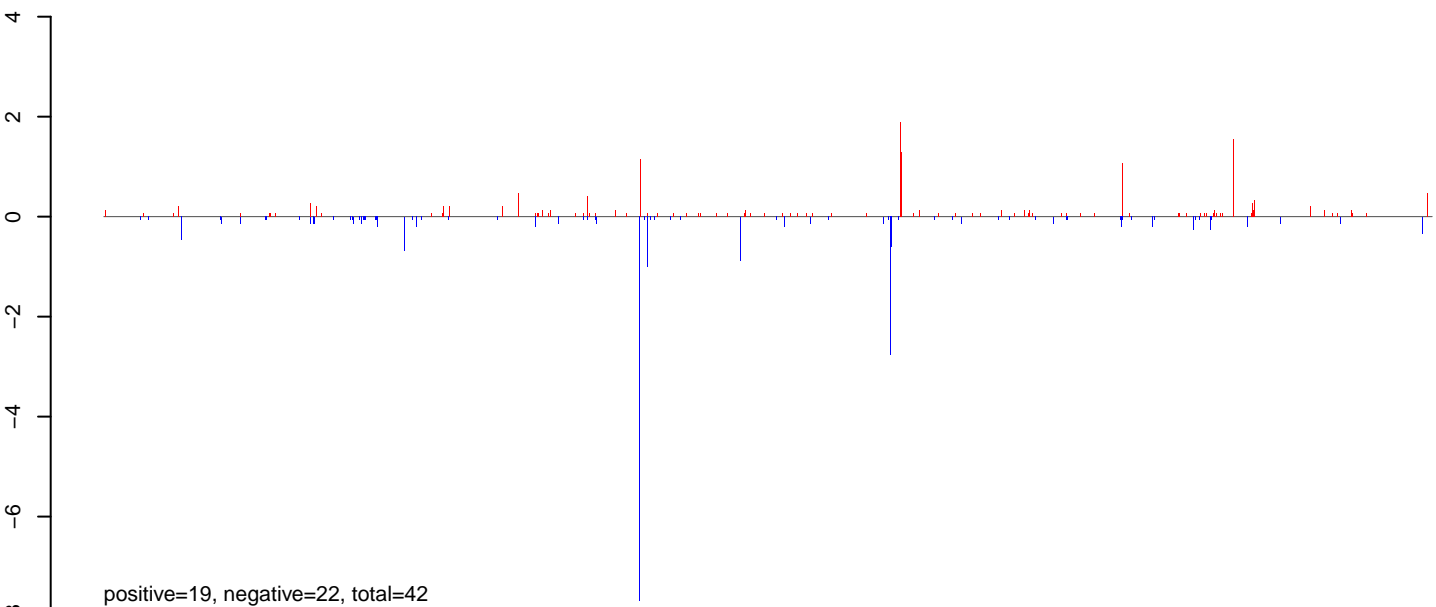


0 500000 1000000 1500000

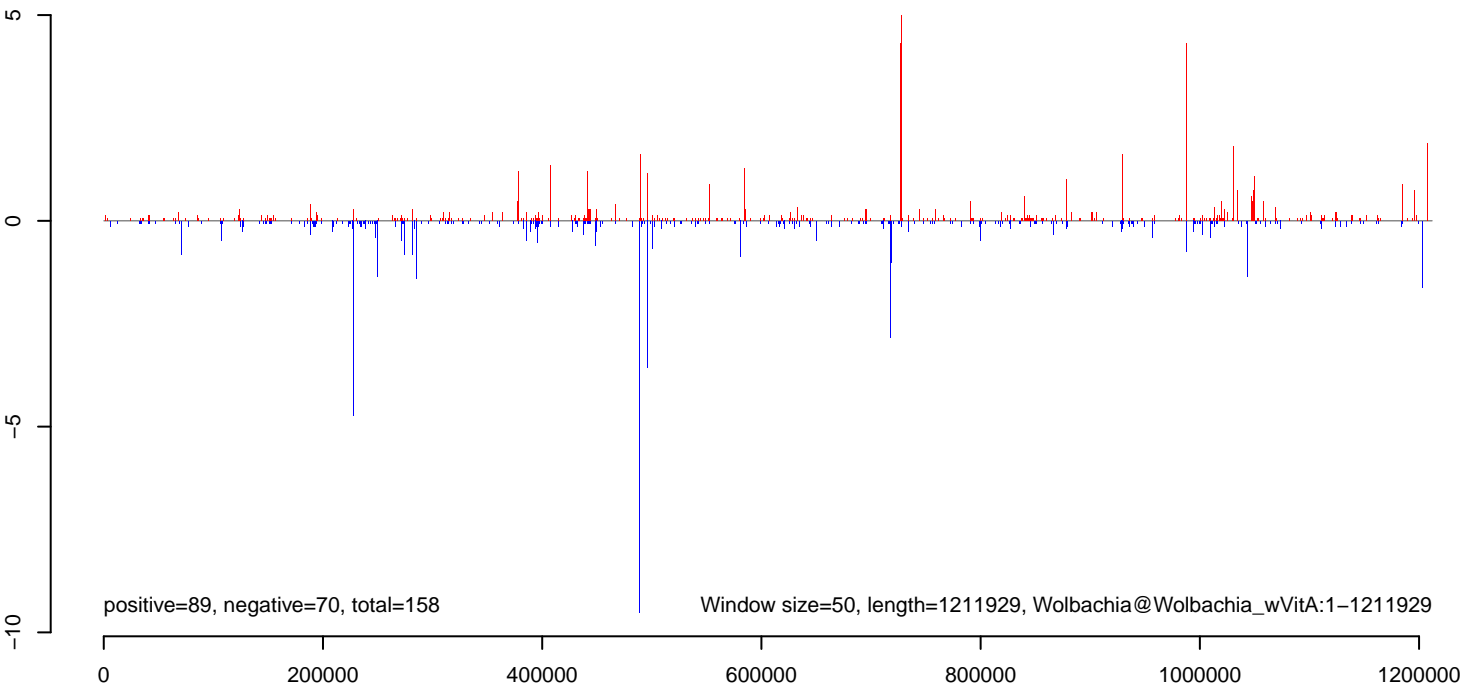
AeAlbo_FemaleWhole_Sugar_CT.18_23.rep



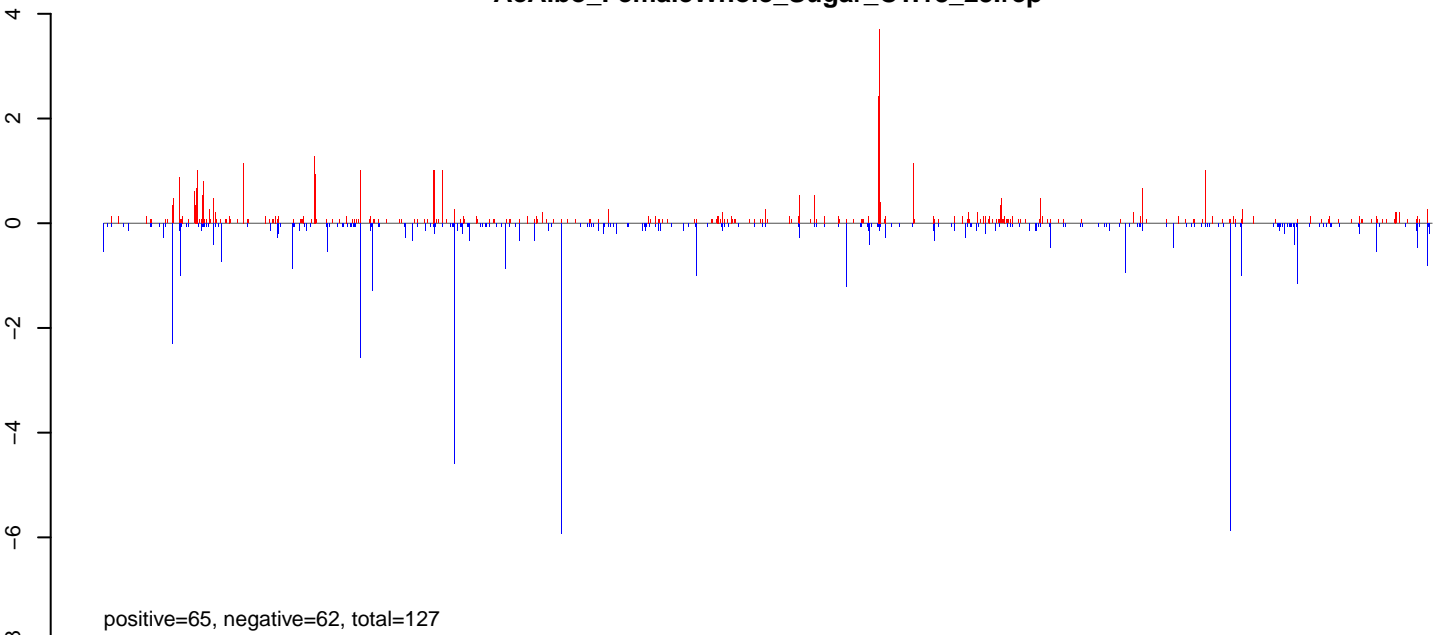
AeAlbo_FemaleWhole_Sugar_CT.24_35.rep



AeAlbo_FemaleWhole_Sugar_CT.rep



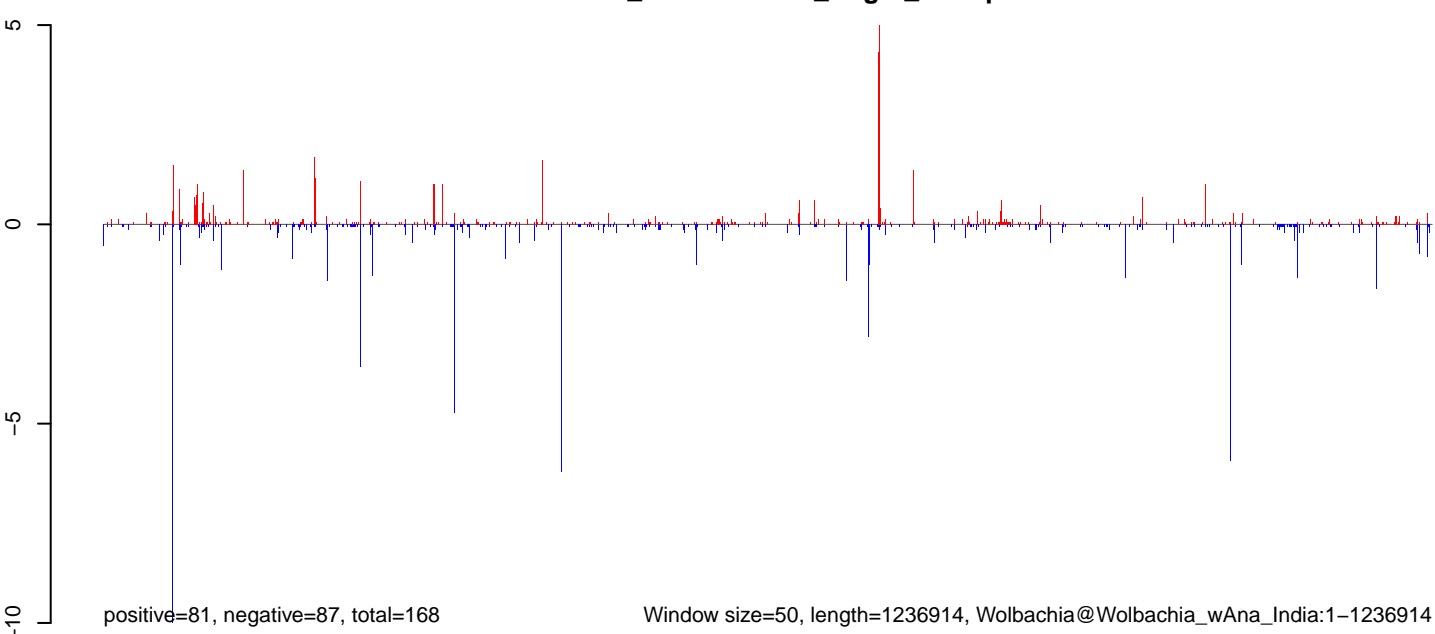
AeAlbo_FemaleWhole_Sugar_CT.18_23.rep



AeAlbo_FemaleWhole_Sugar_CT.24_35.rep



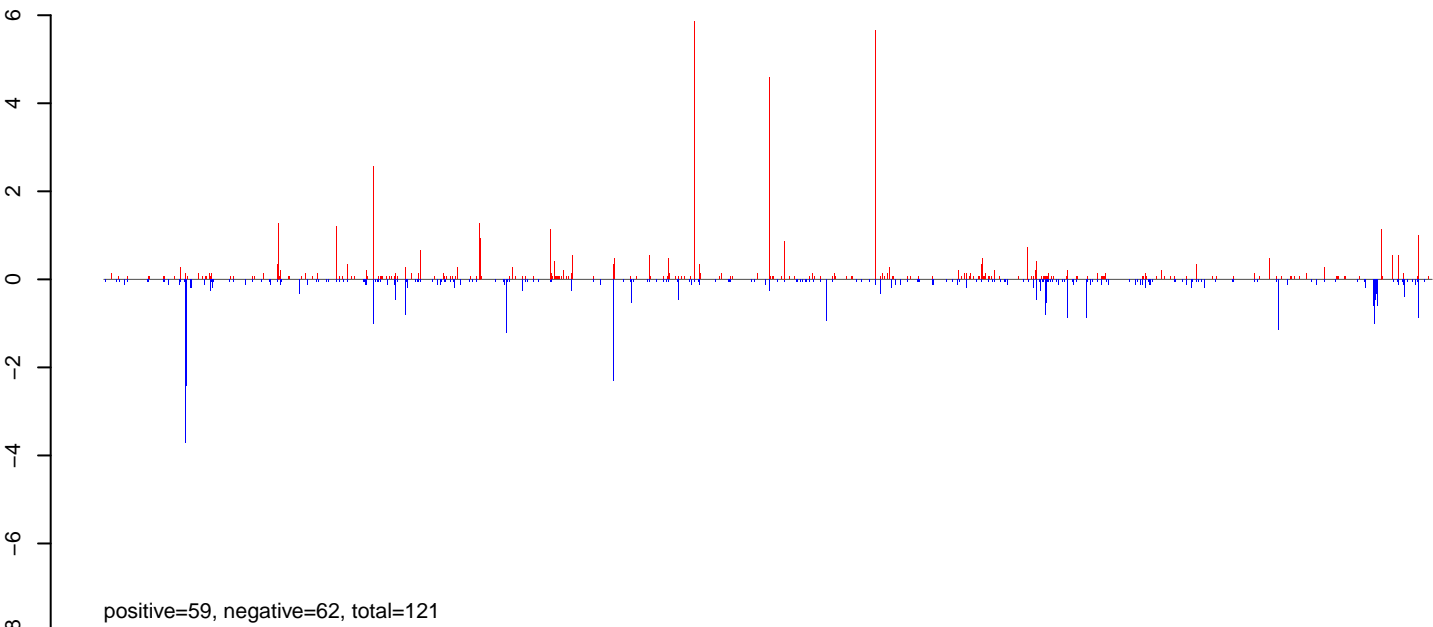
AeAlbo_FemaleWhole_Sugar_CT.rep



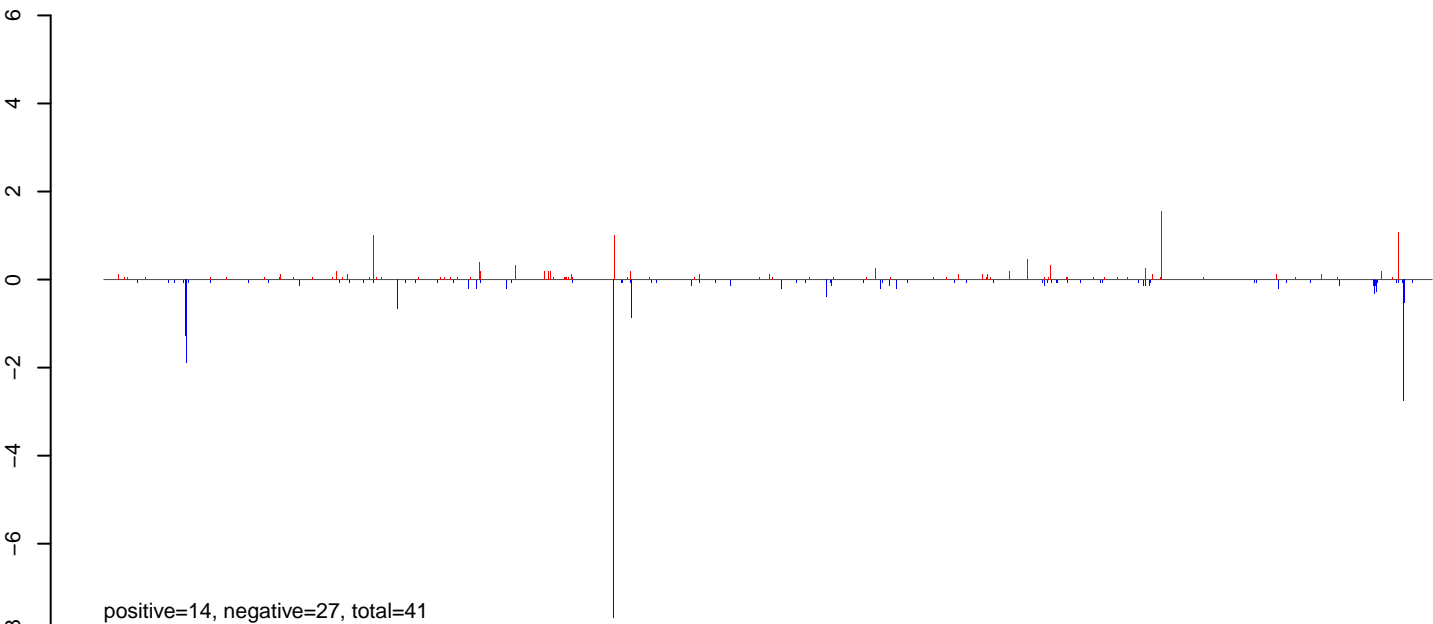
Window size=50, length=1236914, Wolbachia@Wolbachia_wAna_India:1-1236914

0 200000 400000 600000 800000 1000000 1200000

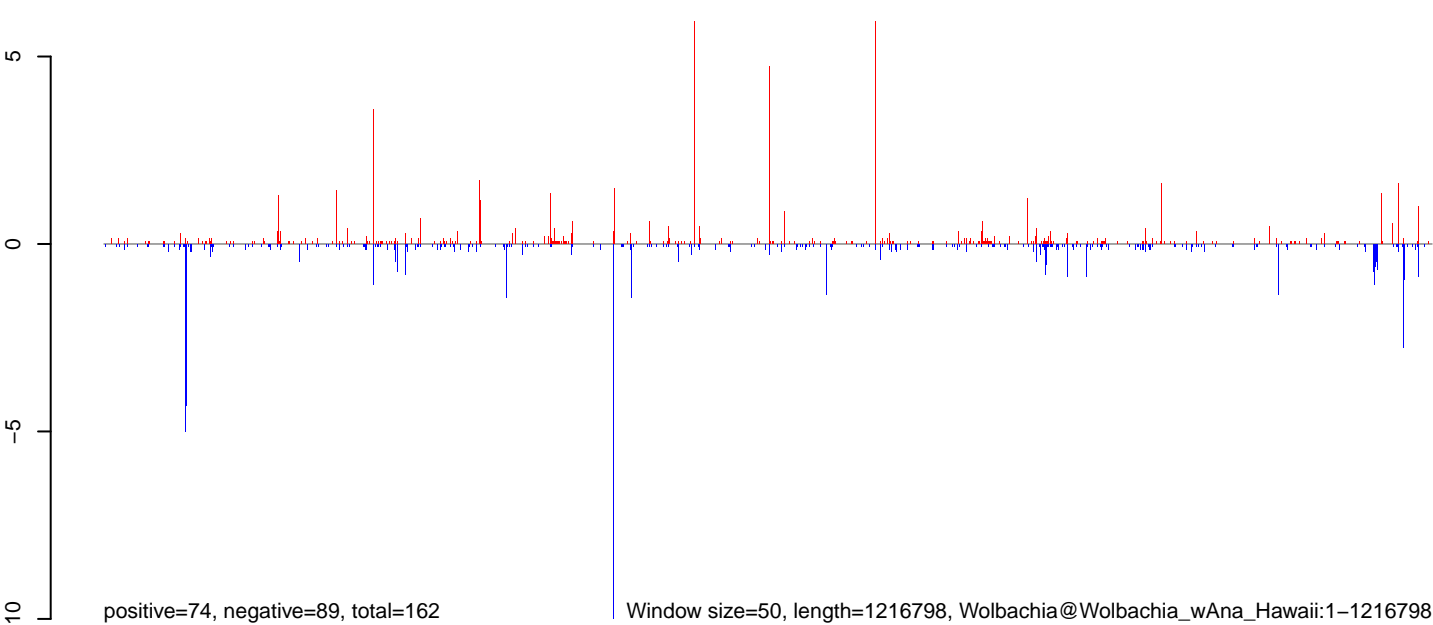
AeAlbo_FemaleWhole_Sugar_CT.18_23.rep



AeAlbo_FemaleWhole_Sugar_CT.24_35.rep



AeAlbo_FemaleWhole_Sugar_CT.rep

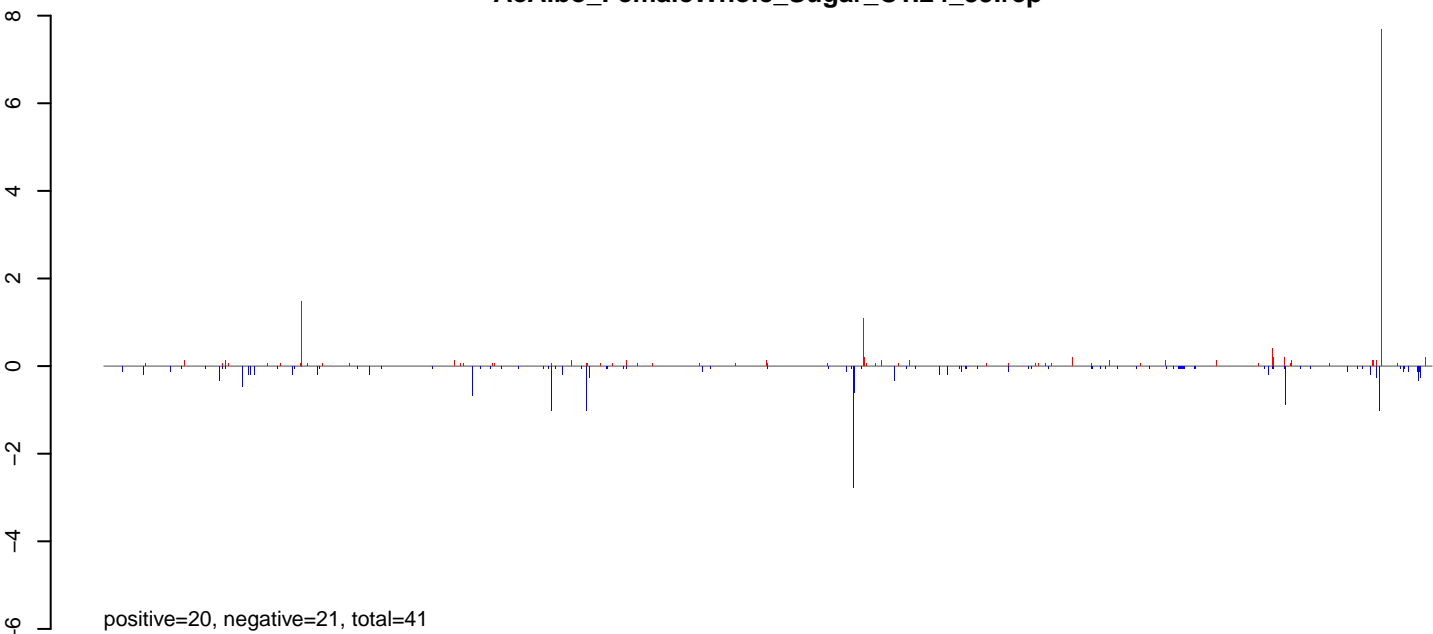


0 200000 400000 600000 800000 1000000 1200000

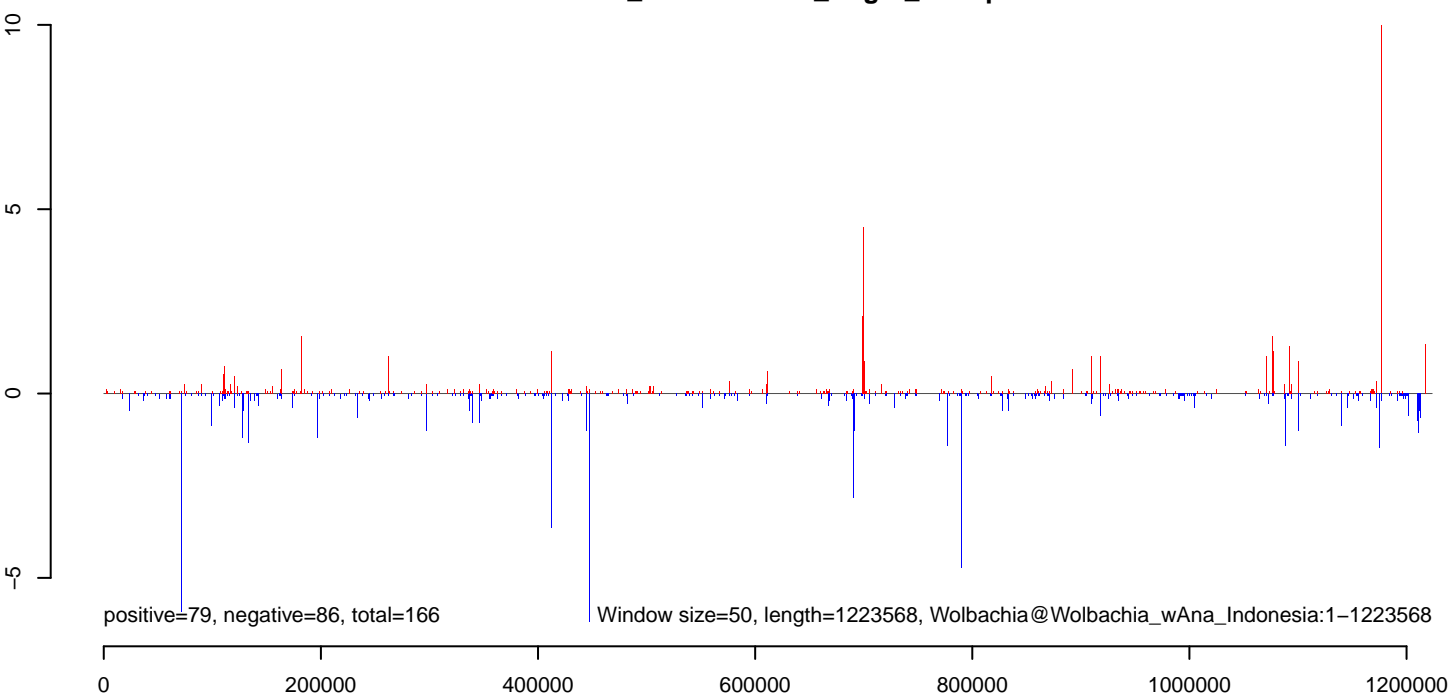
AeAlbo_FemaleWhole_Sugar_CT.18_23.rep



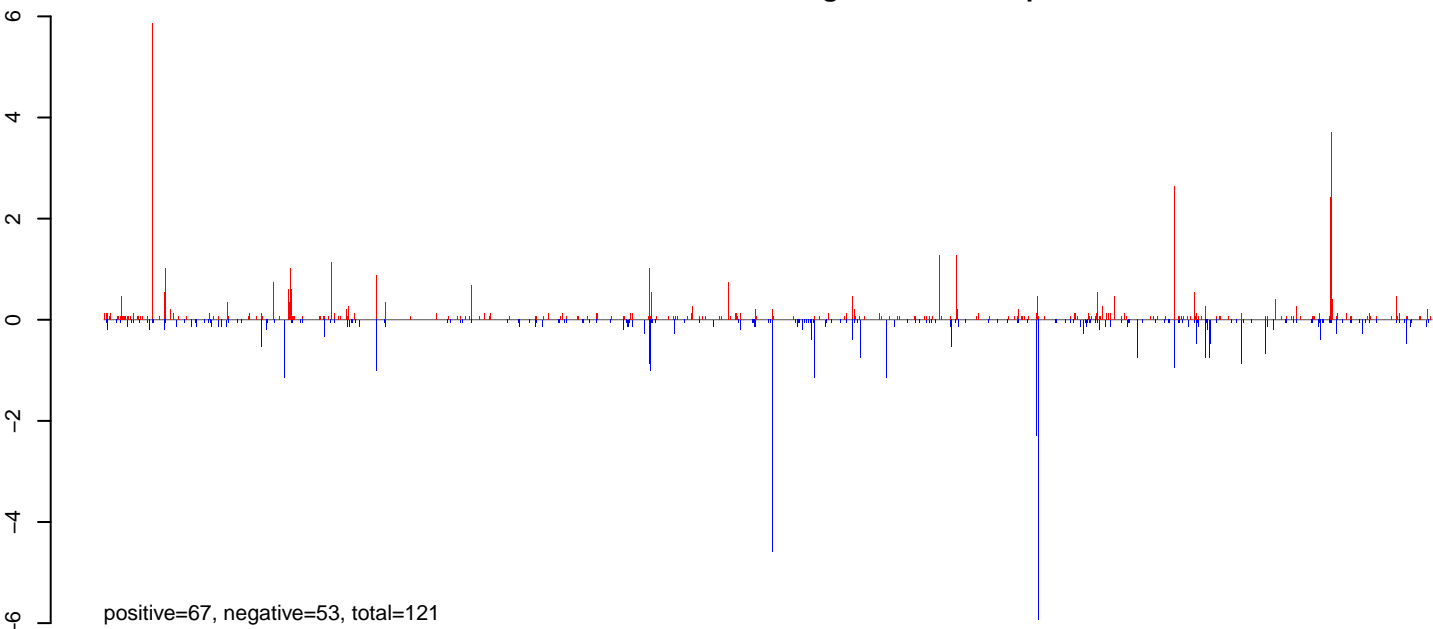
AeAlbo_FemaleWhole_Sugar_CT.24_35.rep



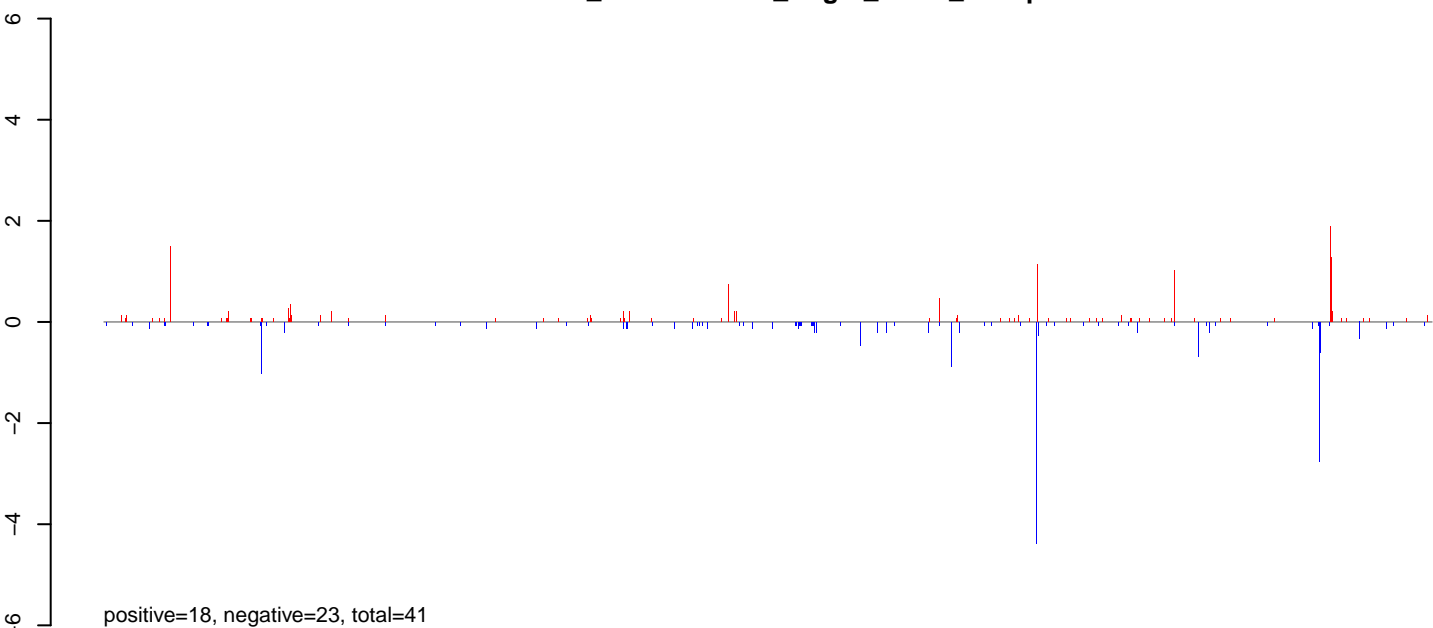
AeAlbo_FemaleWhole_Sugar_CT.rep



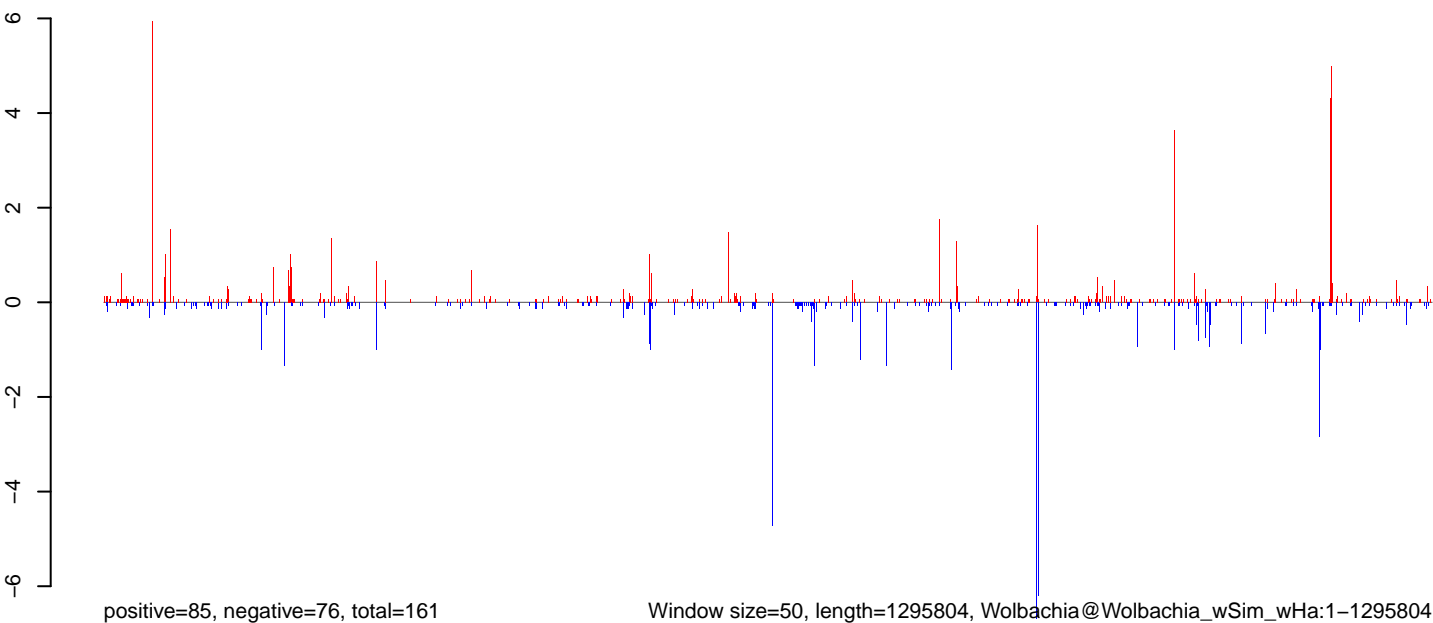
AeAlbo_FemaleWhole_Sugar_CT.18_23.rep



AeAlbo_FemaleWhole_Sugar_CT.24_35.rep

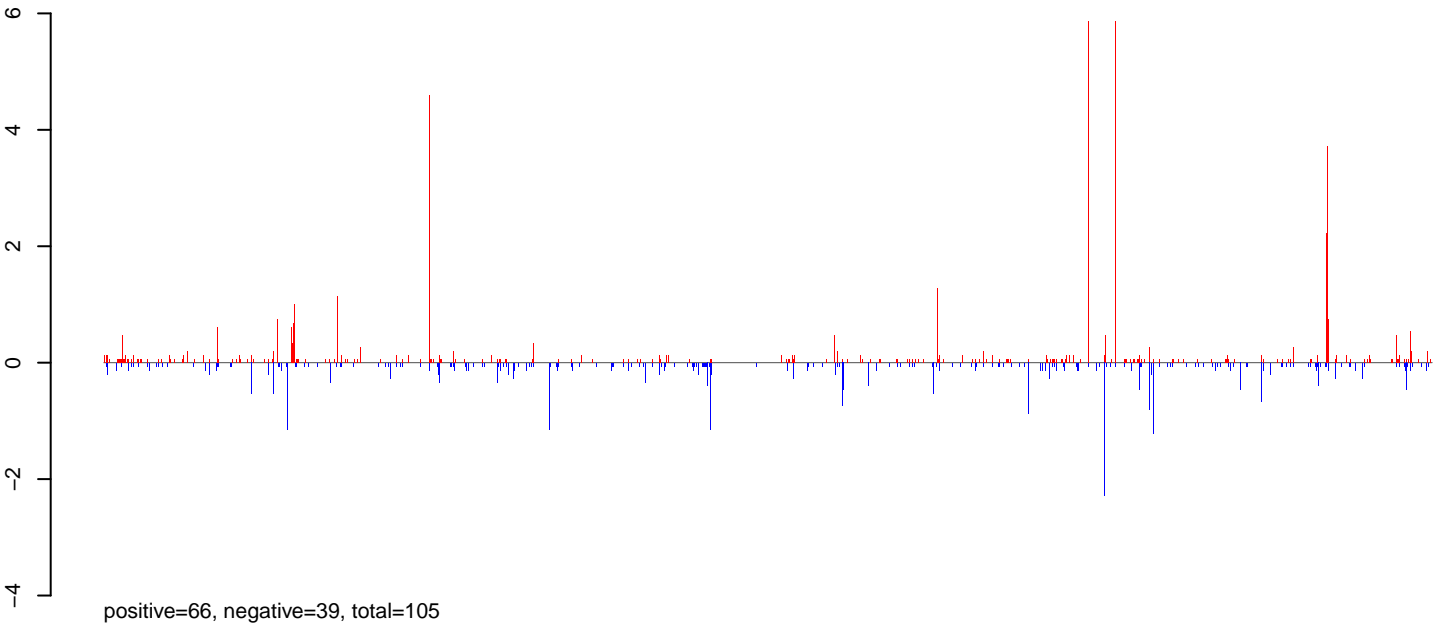


AeAlbo_FemaleWhole_Sugar_CT.rep



0 200000 400000 600000 800000 1000000 1200000

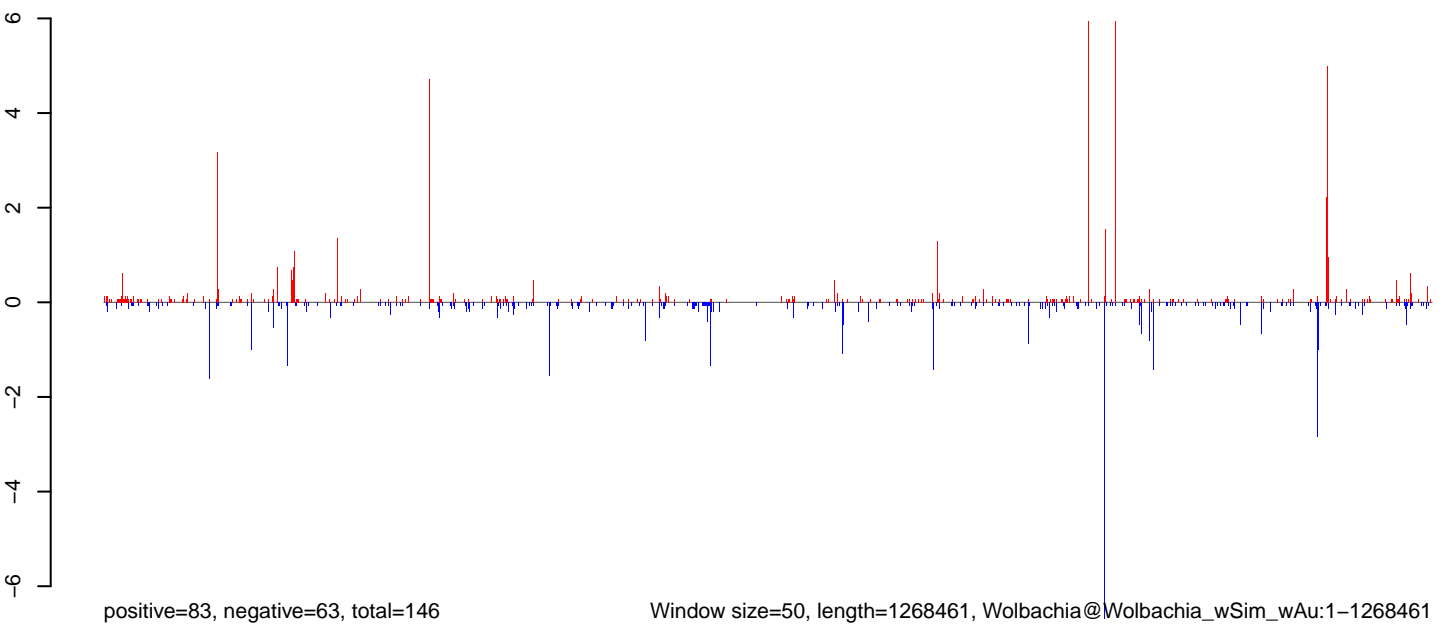
AeAlbo_FemaleWhole_Sugar_CT.18_23.rep



AeAlbo_FemaleWhole_Sugar_CT.24_35.rep



AeAlbo_FemaleWhole_Sugar_CT.rep



0 200000 400000 600000 800000 1000000 1200000

AeAlbo_FemaleWhole_Sugar_CT.18_23.rep

positive=55, negative=51, total=106

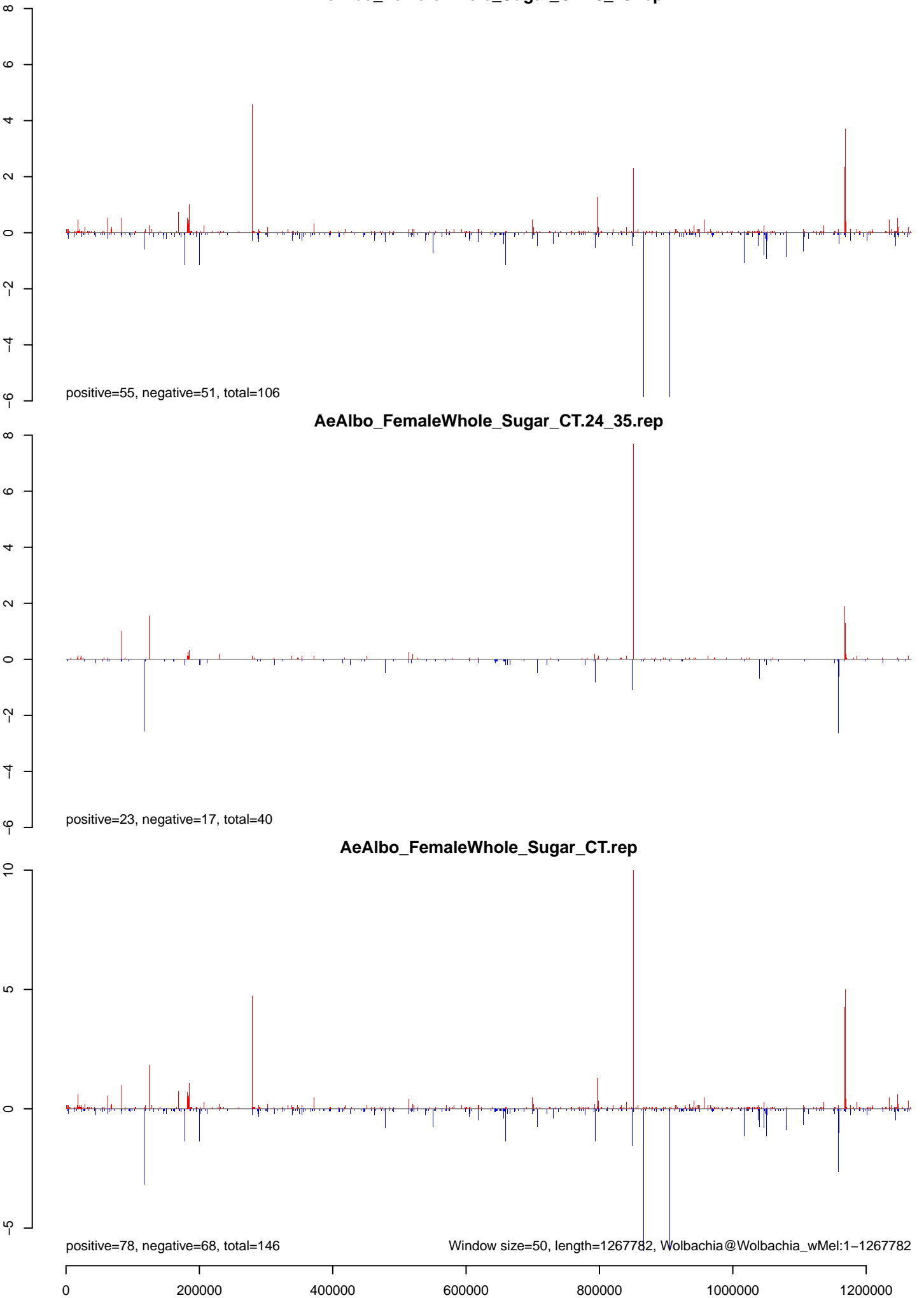
AeAlbo_FemaleWhole_Sugar_CT.24_35.rep

positive=23, negative=17, total=40

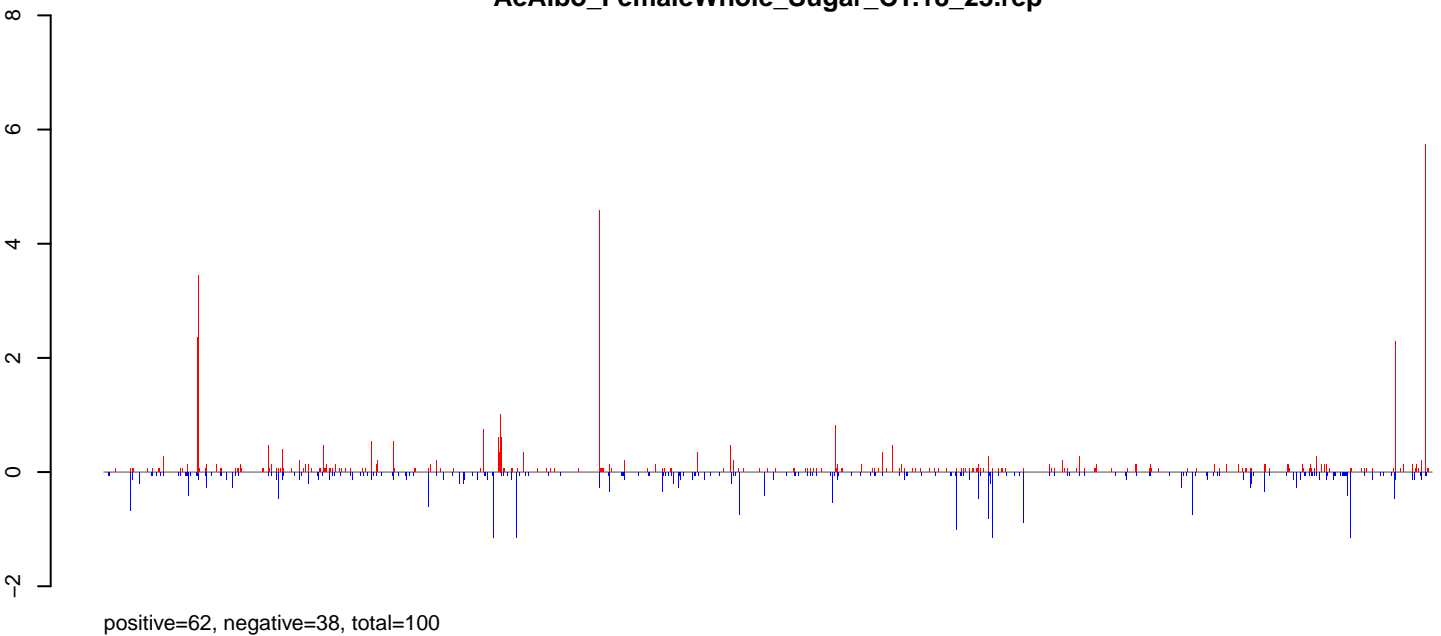
AeAlbo_FemaleWhole_Sugar_CT.rep

positive=78, negative=68, total=146

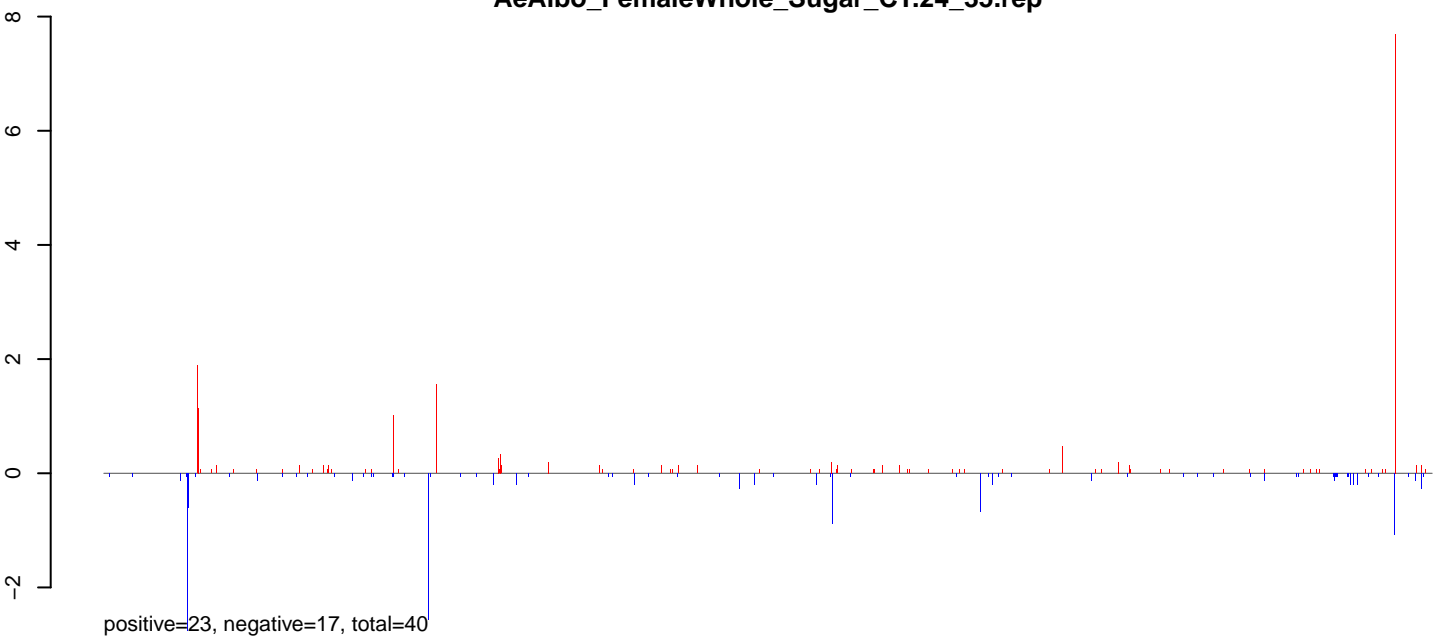
Window size=50, length=1267782, Wolbachia@Wolbachia_wMel:1-1267782



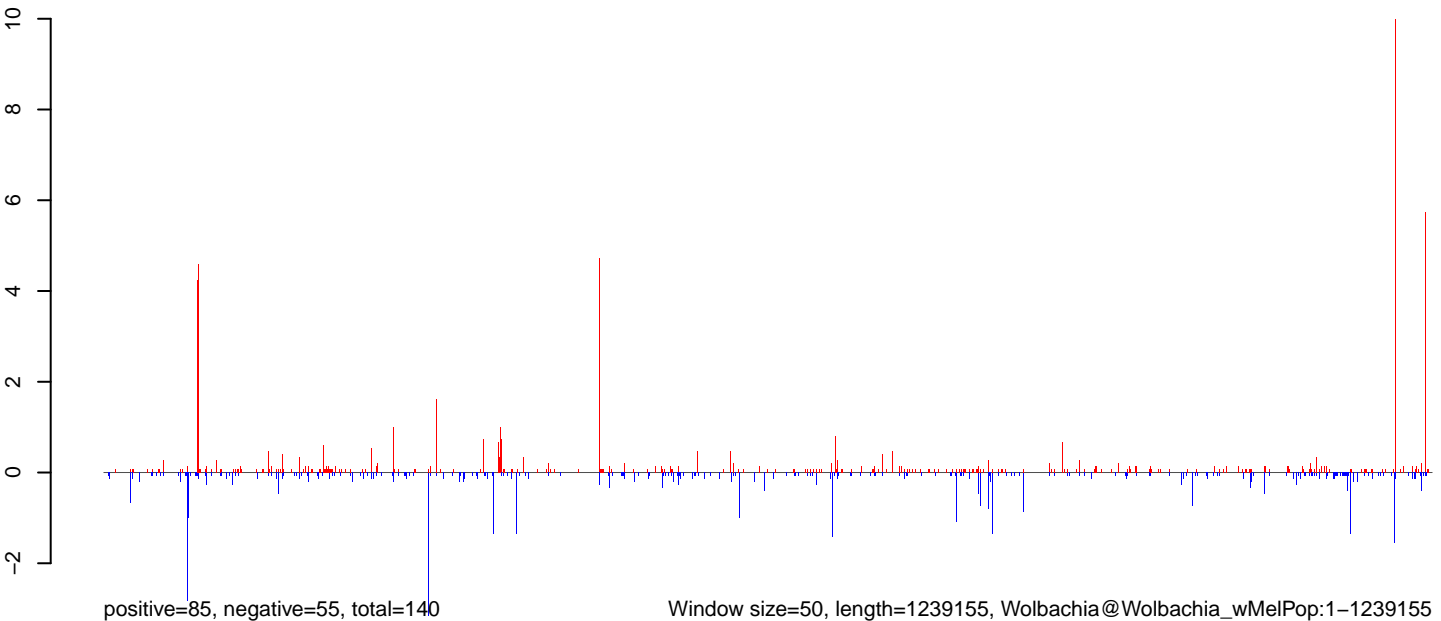
AeAlbo_FemaleWhole_Sugar_CT.18_23.rep



AeAlbo_FemaleWhole_Sugar_CT.24_35.rep

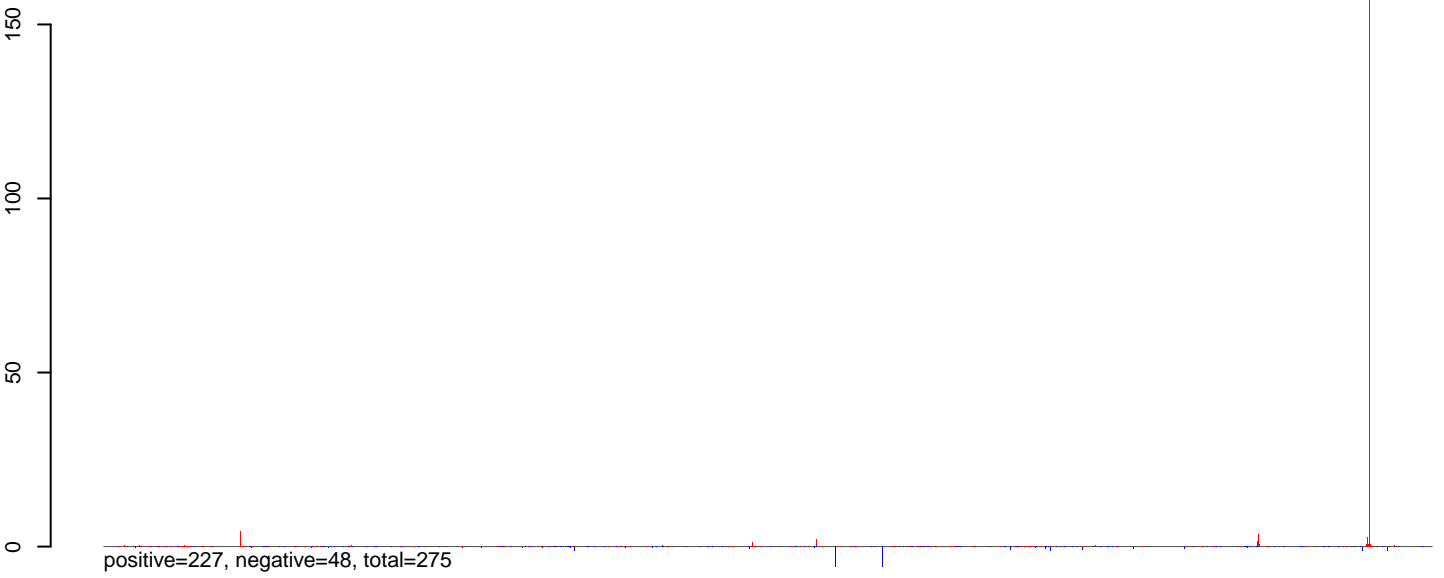


AeAlbo_FemaleWhole_Sugar_CT.rep

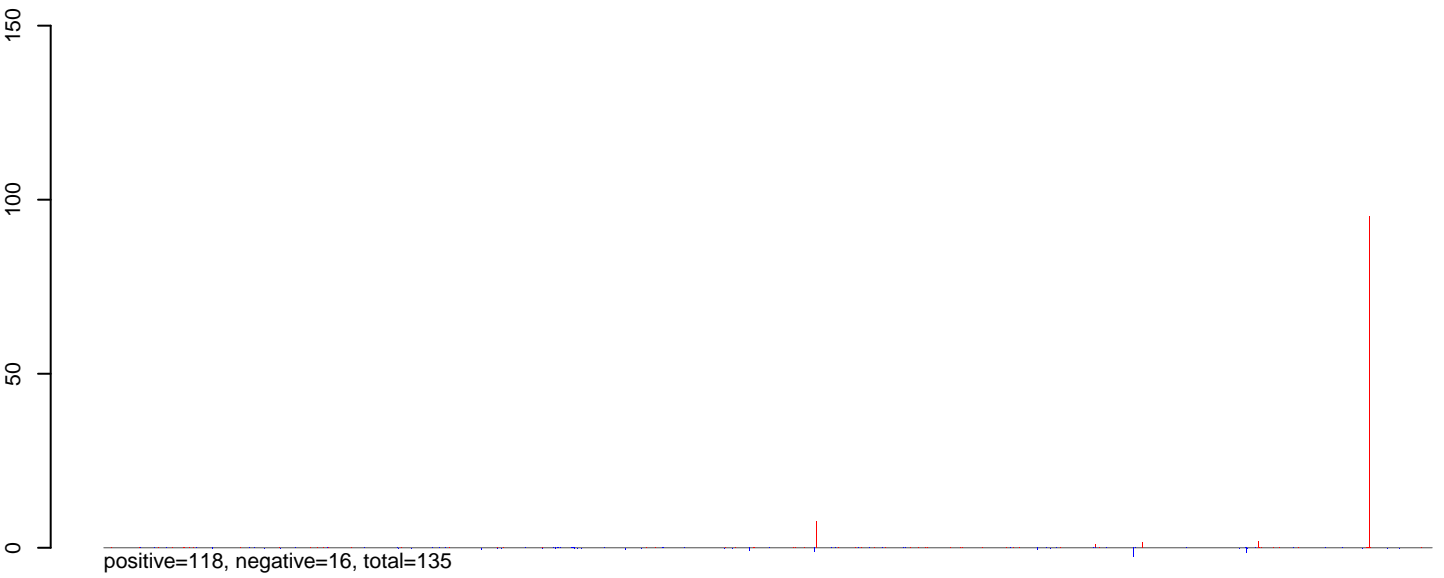


0 200000 400000 600000 800000 1000000 1200000

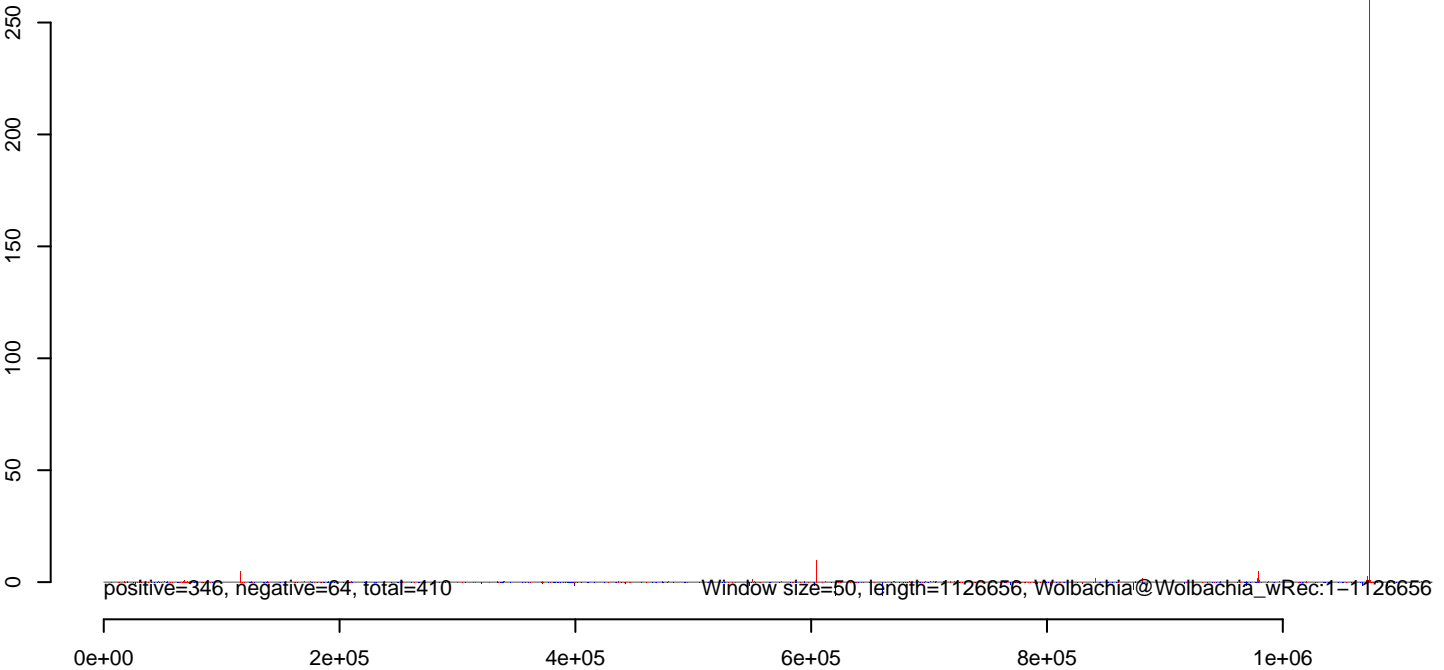
AeAlbo_FemaleWhole_Sugar_CT.18_23.rep



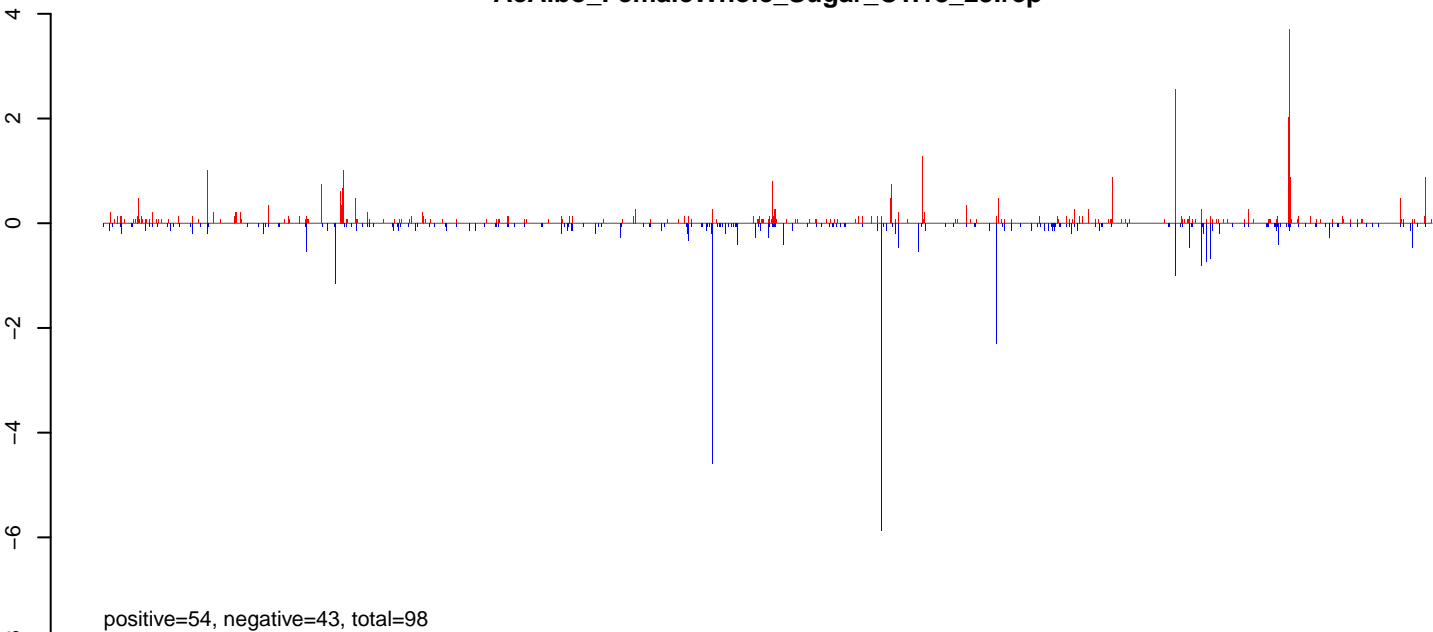
AeAlbo_FemaleWhole_Sugar_CT.24_35.rep



AeAlbo_FemaleWhole_Sugar_CT.rep



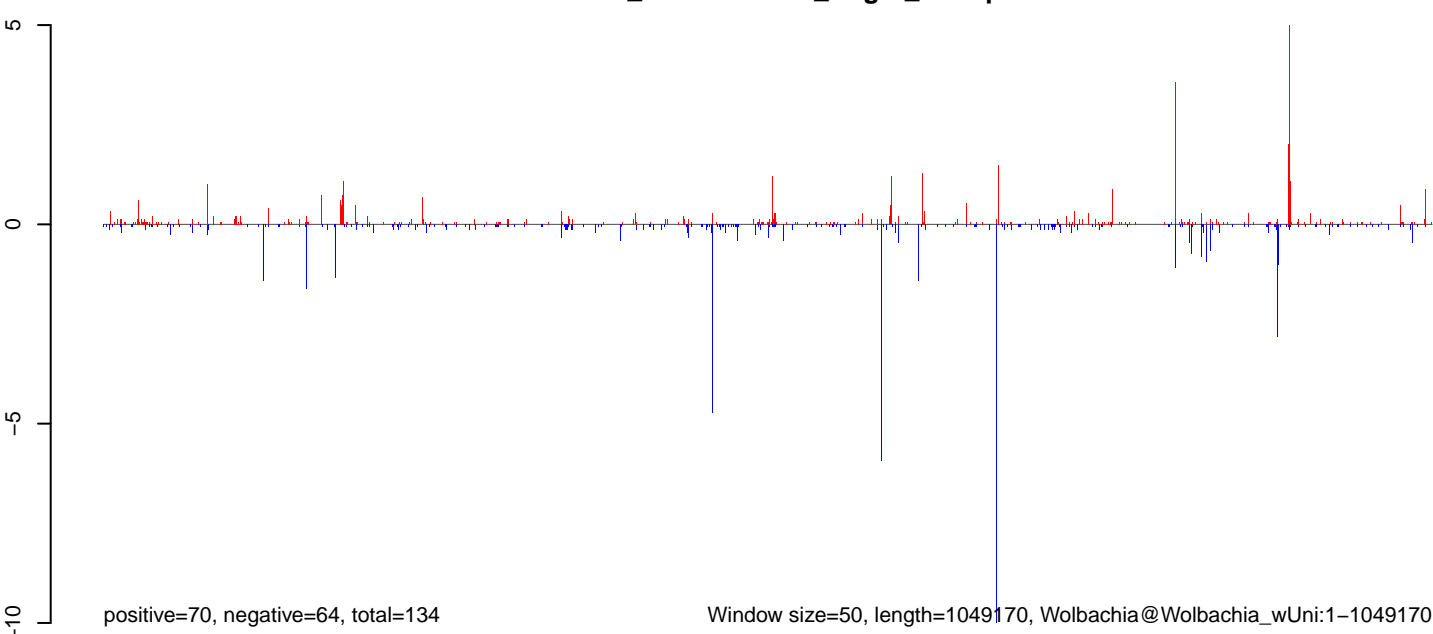
AeAlbo_FemaleWhole_Sugar_CT.18_23.rep



AeAlbo_FemaleWhole_Sugar_CT.24_35.rep

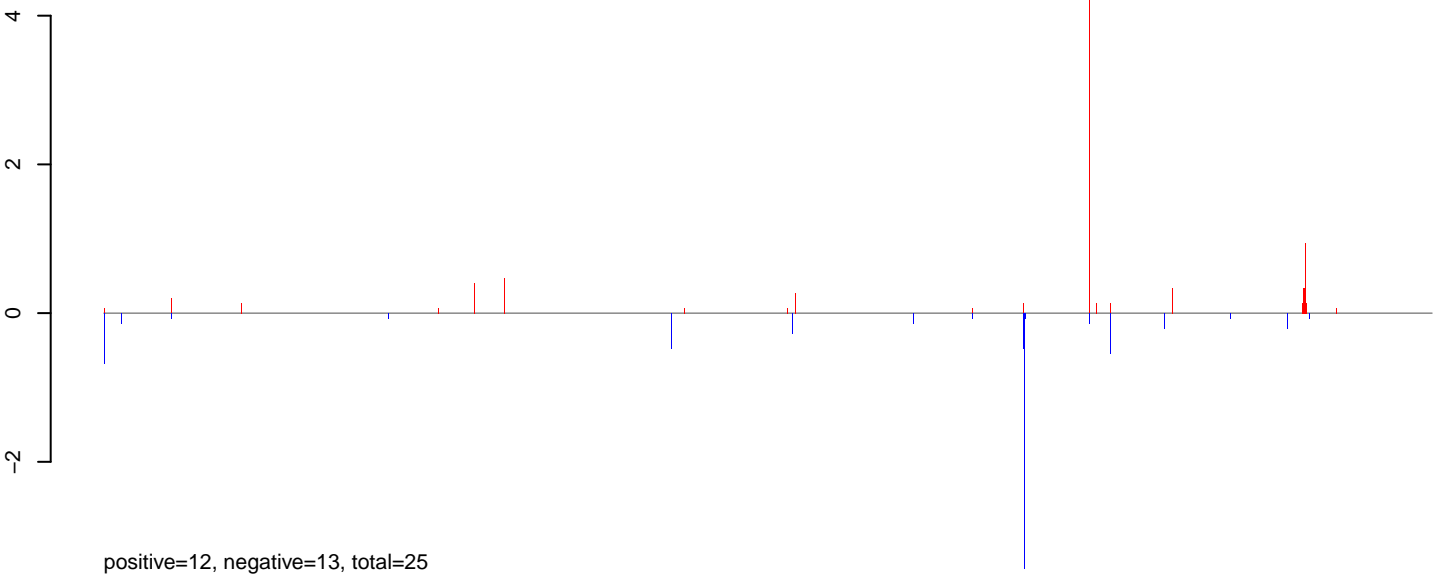


AeAlbo_FemaleWhole_Sugar_CT.rep

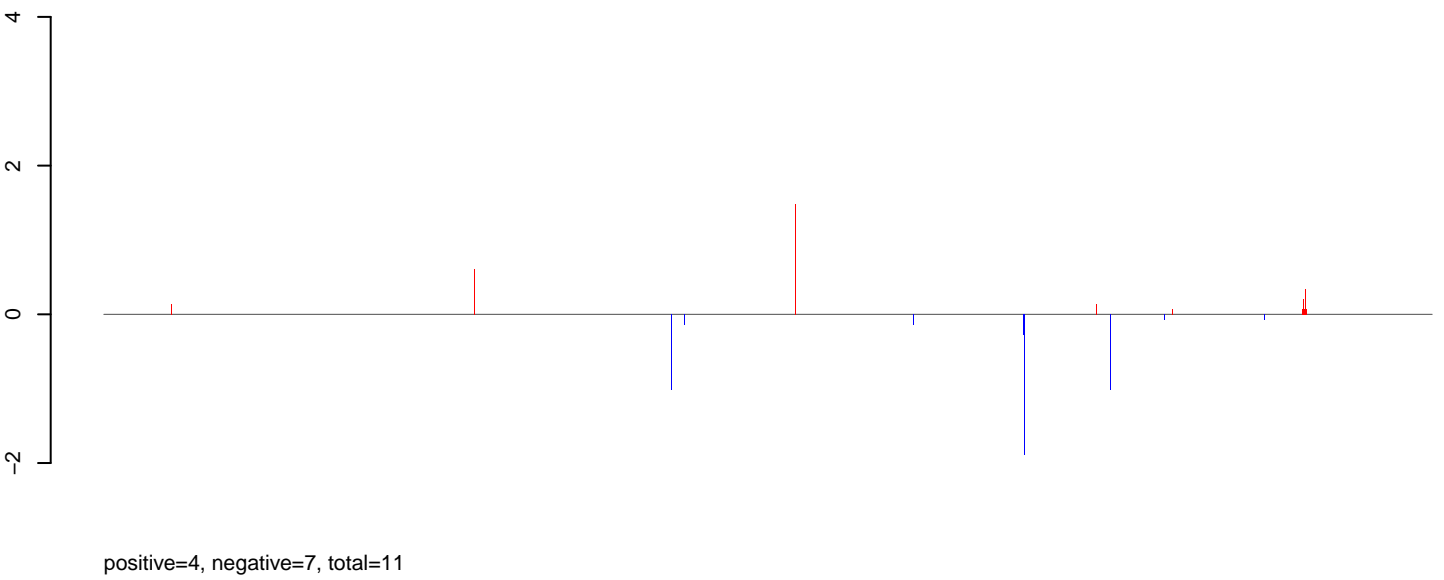


0e+00 2e+05 4e+05 6e+05 8e+05 1e+06

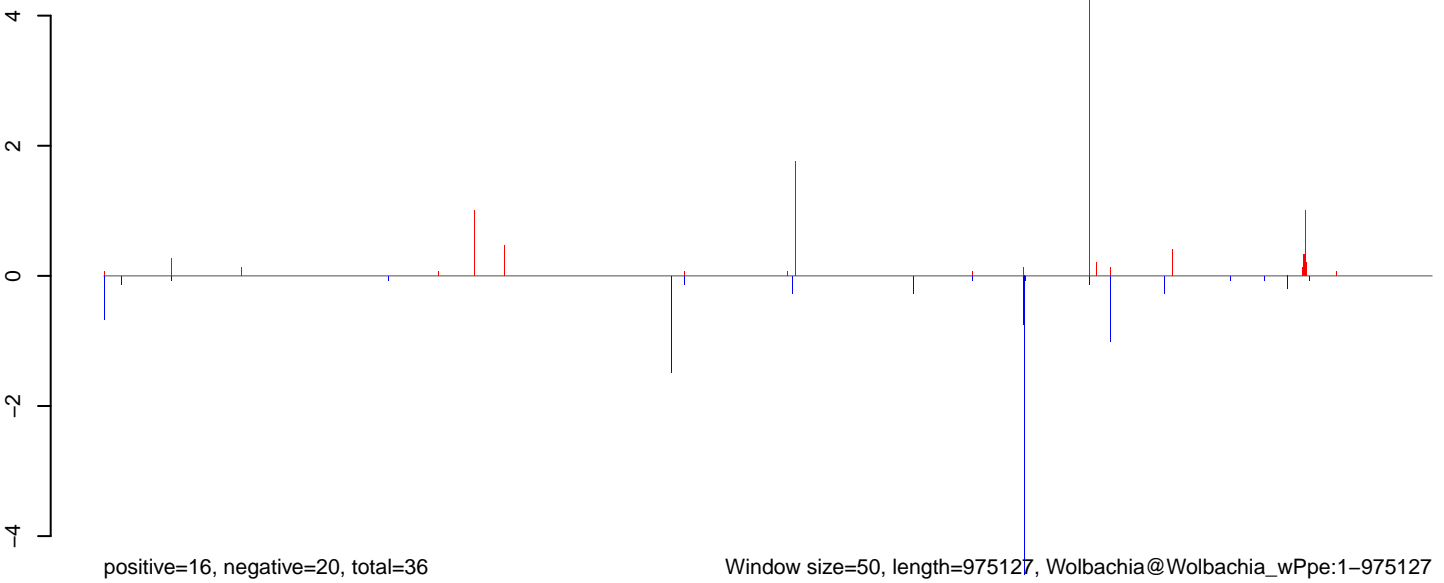
AeAlbo_FemaleWhole_Sugar_CT.18_23.rep



AeAlbo_FemaleWhole_Sugar_CT.24_35.rep



AeAlbo_FemaleWhole_Sugar_CT.rep



Window size=50, length=975127, Wolbachia@Wolbachia_wPpe:1-975127

0e+00 2e+05 4e+05 6e+05 8e+05 1e+06