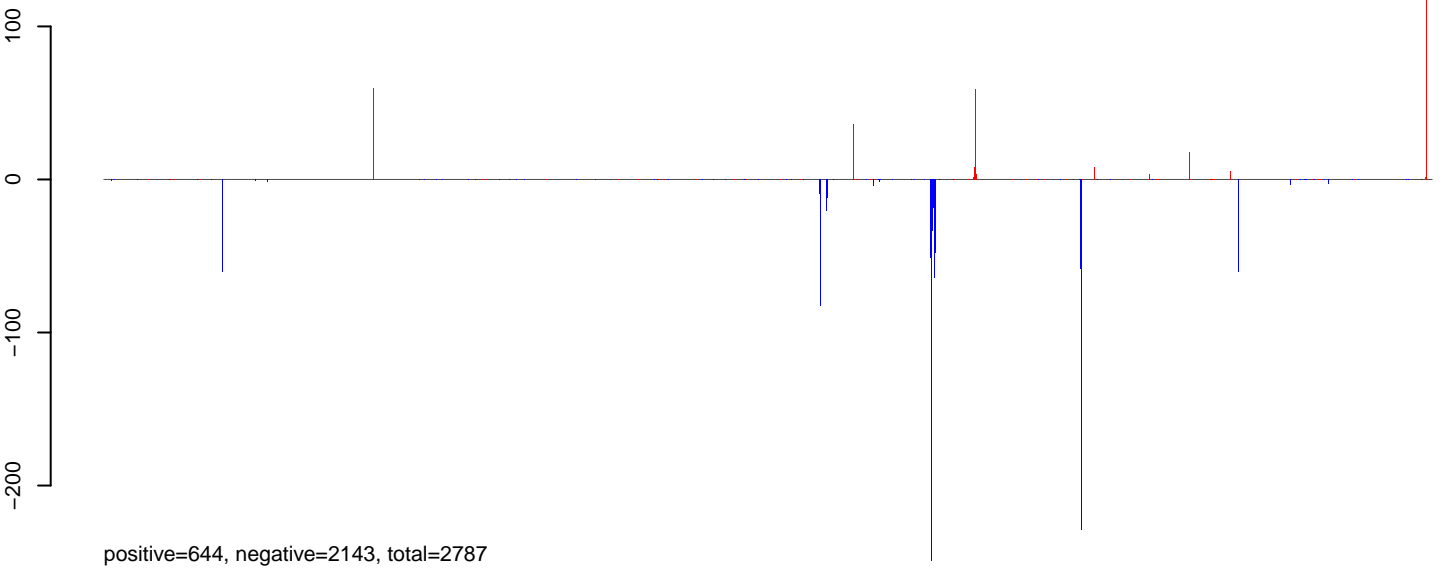
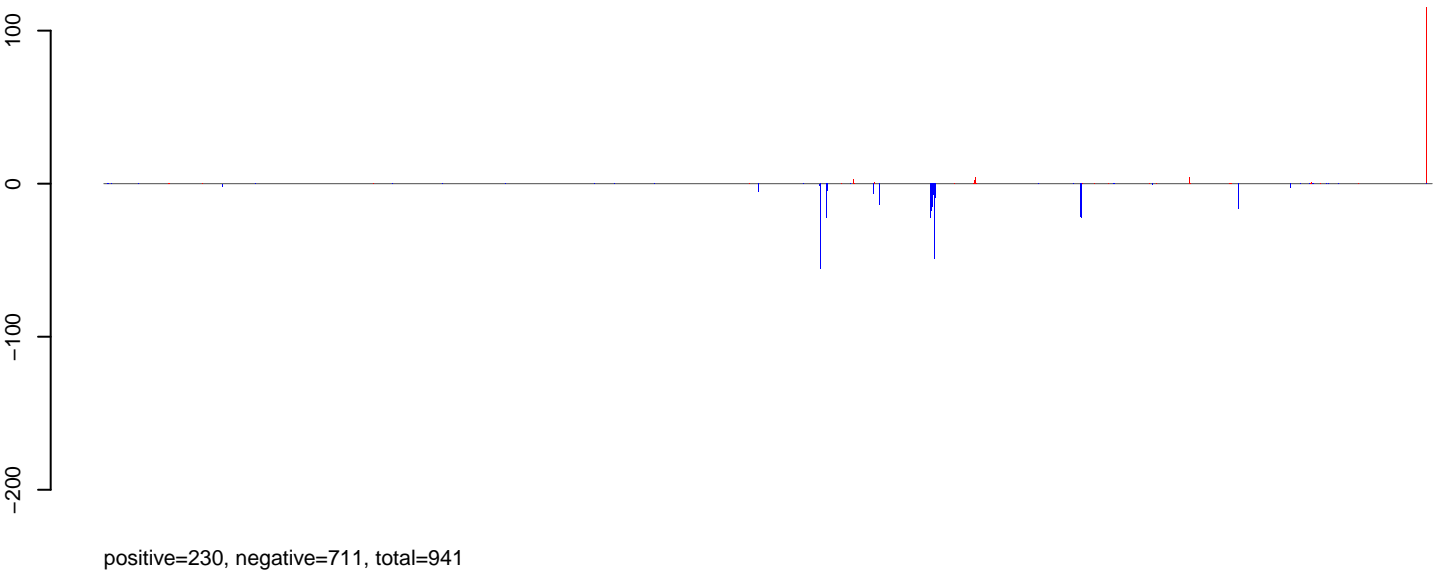


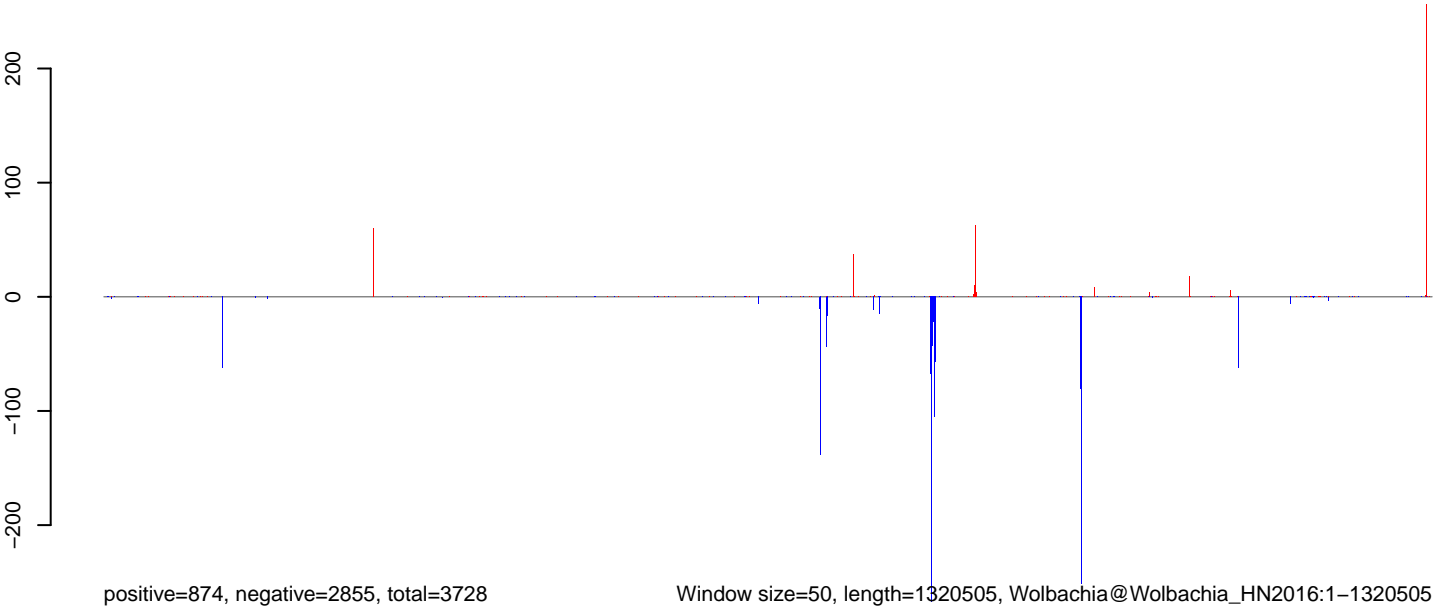
AeAlbo_Larvae_CT.18_23.rep



AeAlbo_Larvae_CT.24_35.rep



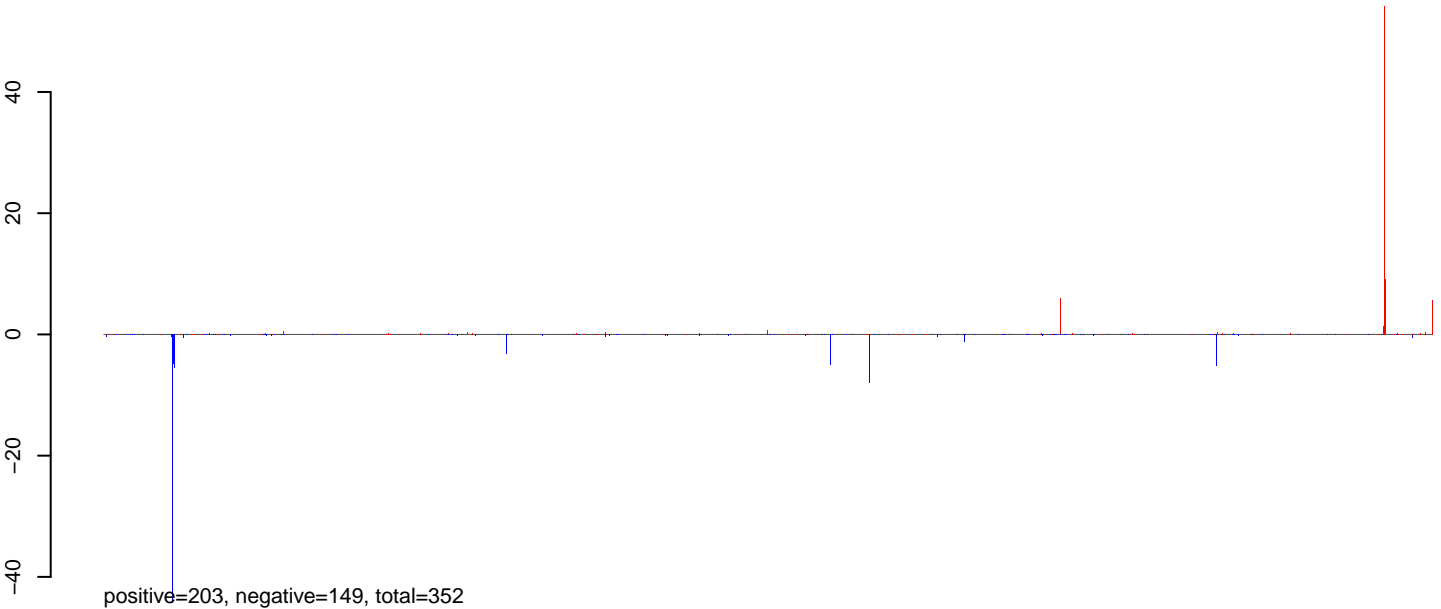
AeAlbo_Larvae_CT.rep



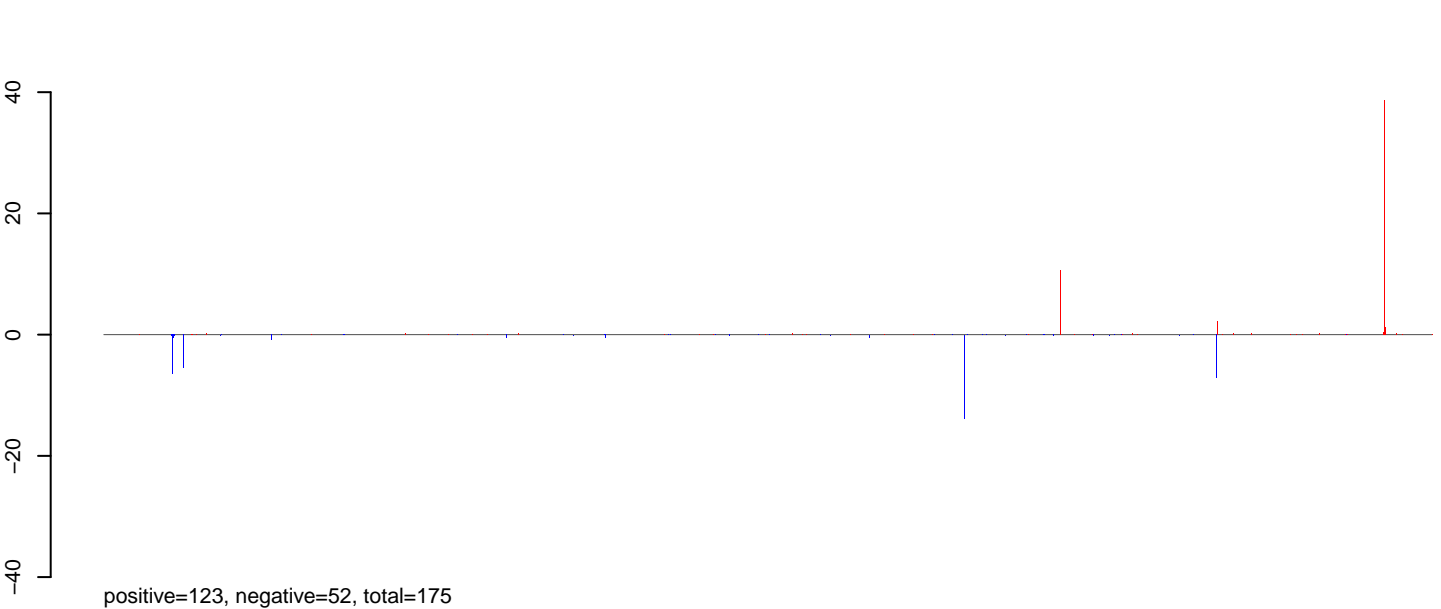
Window size=50, length=1320505, Wolbachia@Wolbachia_HN2016:1-1320505

0 200000 400000 600000 800000 1000000 1200000

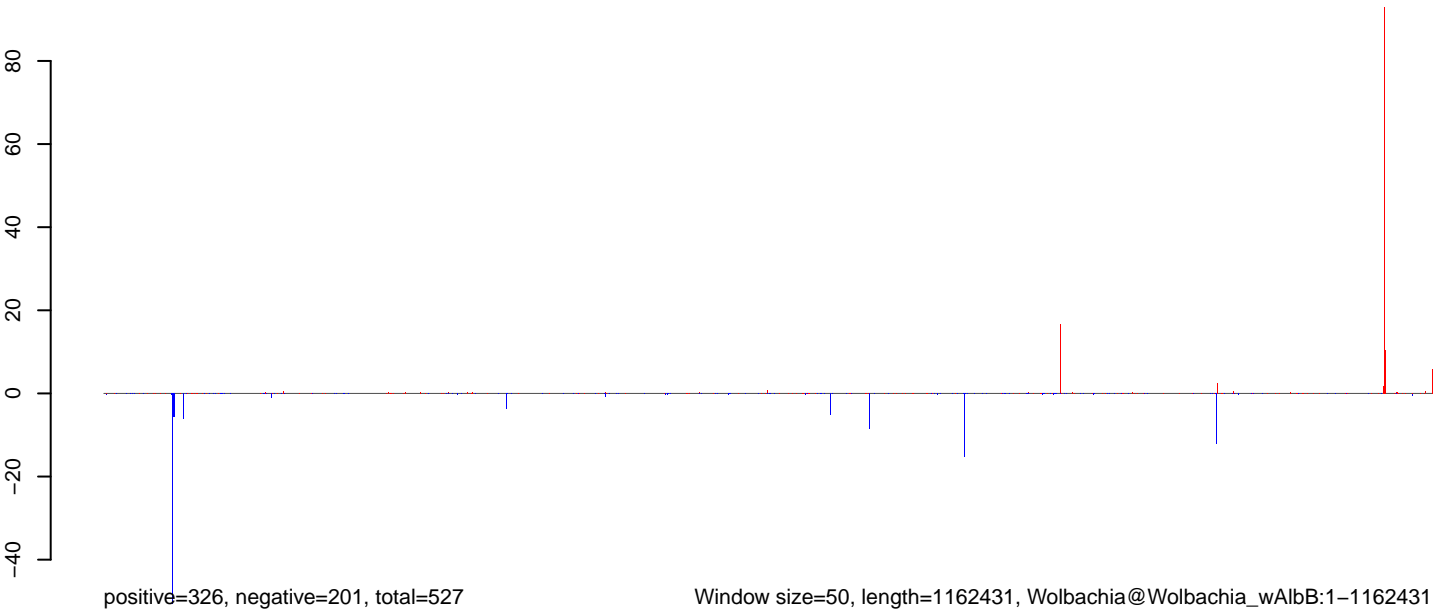
AeAlbo_Larvae_CT.18_23.rep



AeAlbo_Larvae_CT.24_35.rep



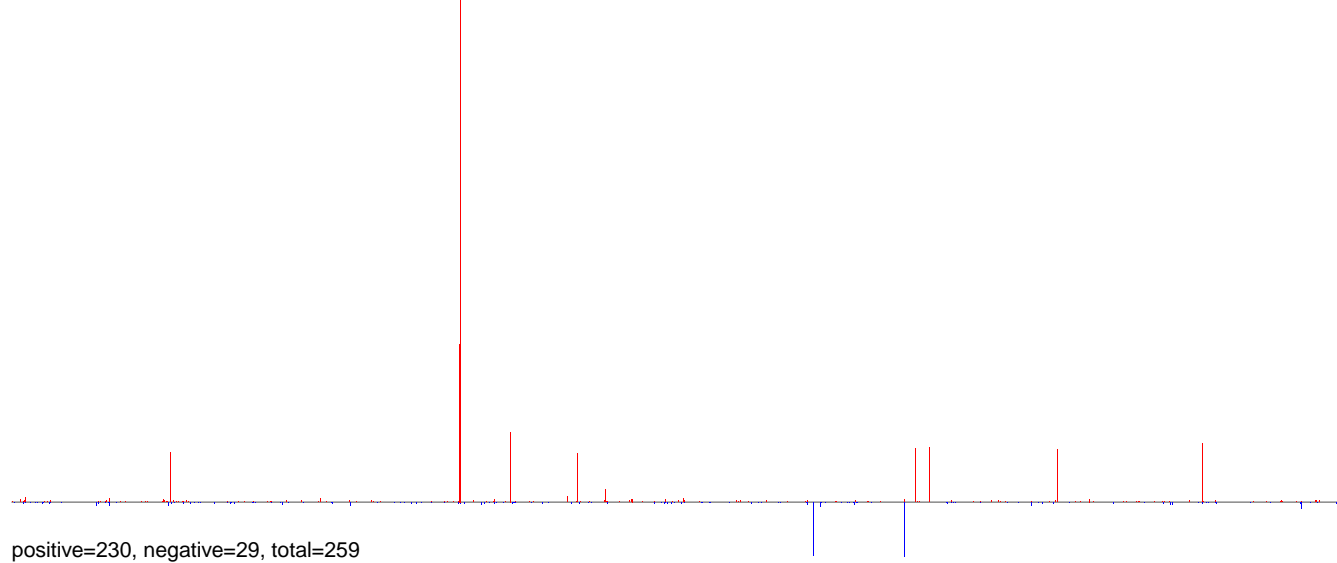
AeAlbo_Larvae_CT.rep



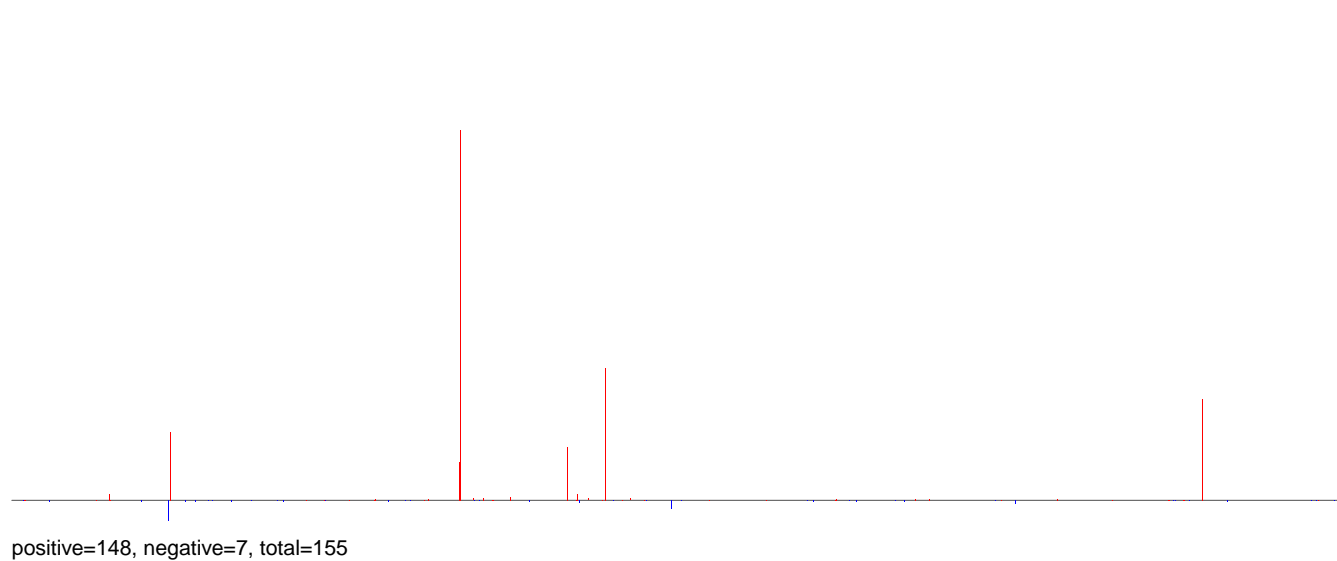
Window size=50, length=1162431, Wolbachia@Wolbachia_wAlbB:1-1162431

0 200000 400000 600000 800000 1000000 1200000

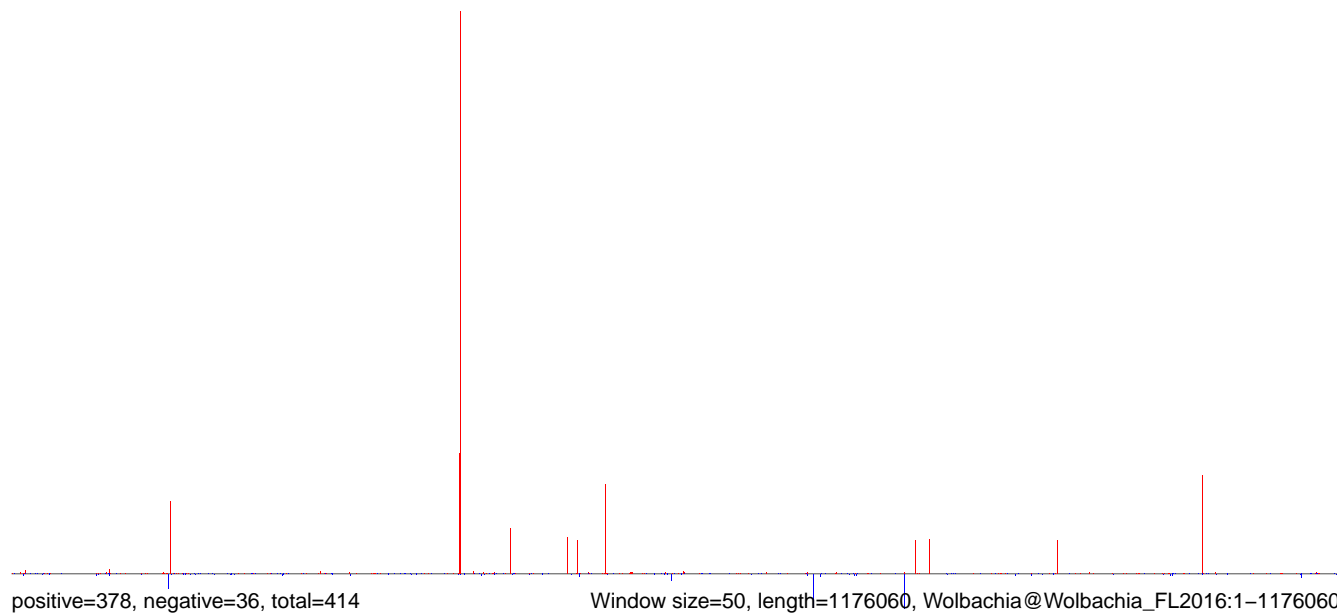
AeAlbo_Larvae_CT.18_23.rep



AeAlbo_Larvae_CT.24_35.rep

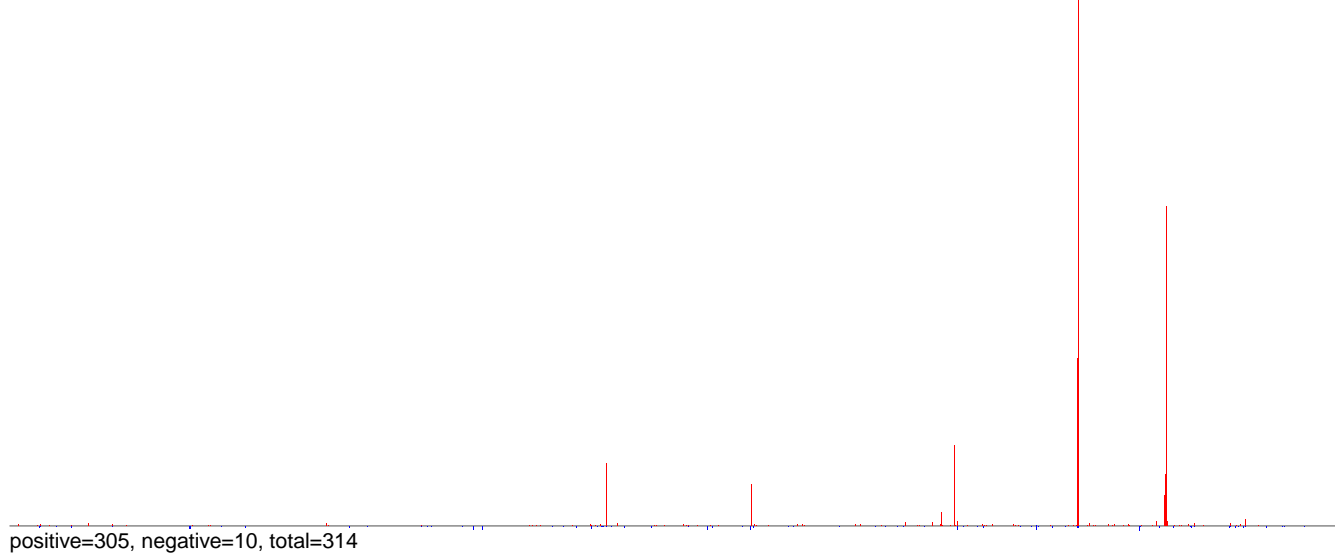


AeAlbo_Larvae_CT.rep

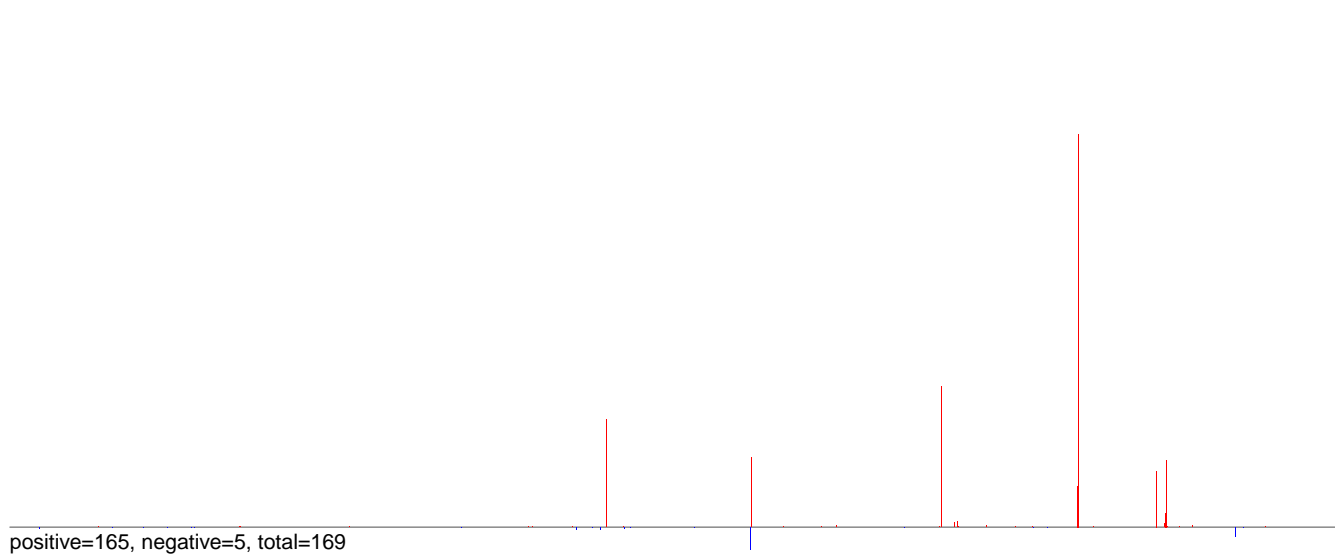


0 200000 400000 600000 800000 1000000 1200000

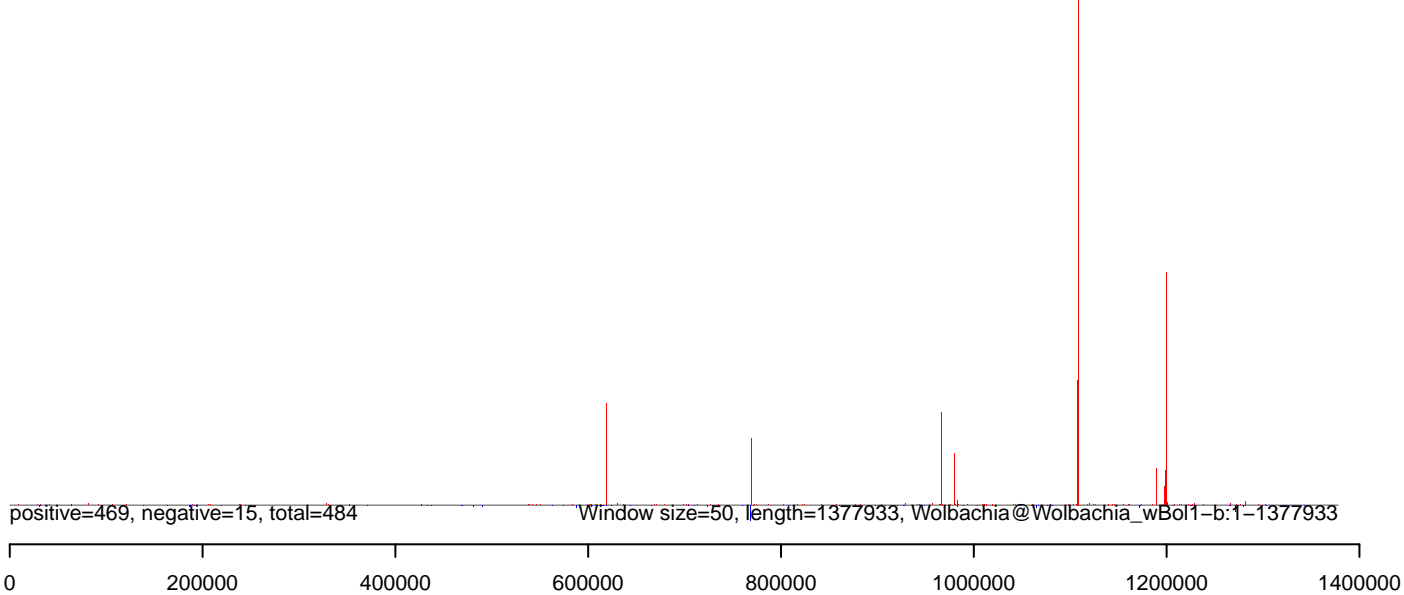
AeAlbo_Larvae_CT.18_23.rep



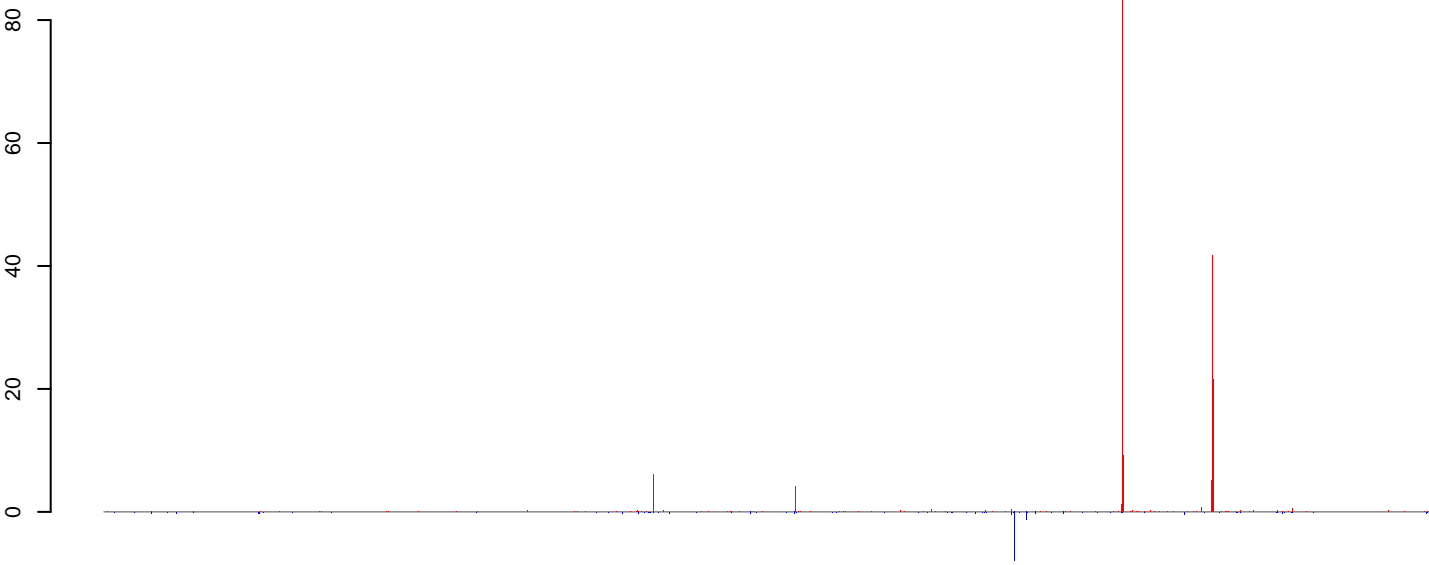
AeAlbo_Larvae_CT.24_35.rep



AeAlbo_Larvae_CT.rep

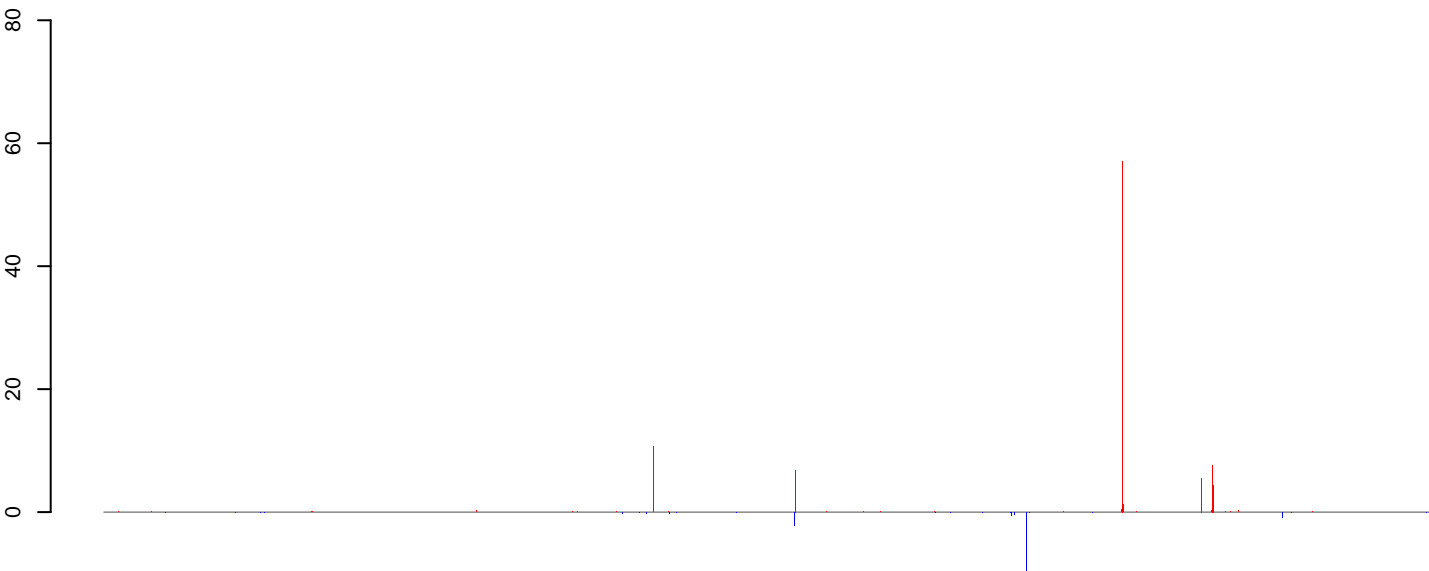


AeAlbo_Larvae_CT.18_23.rep



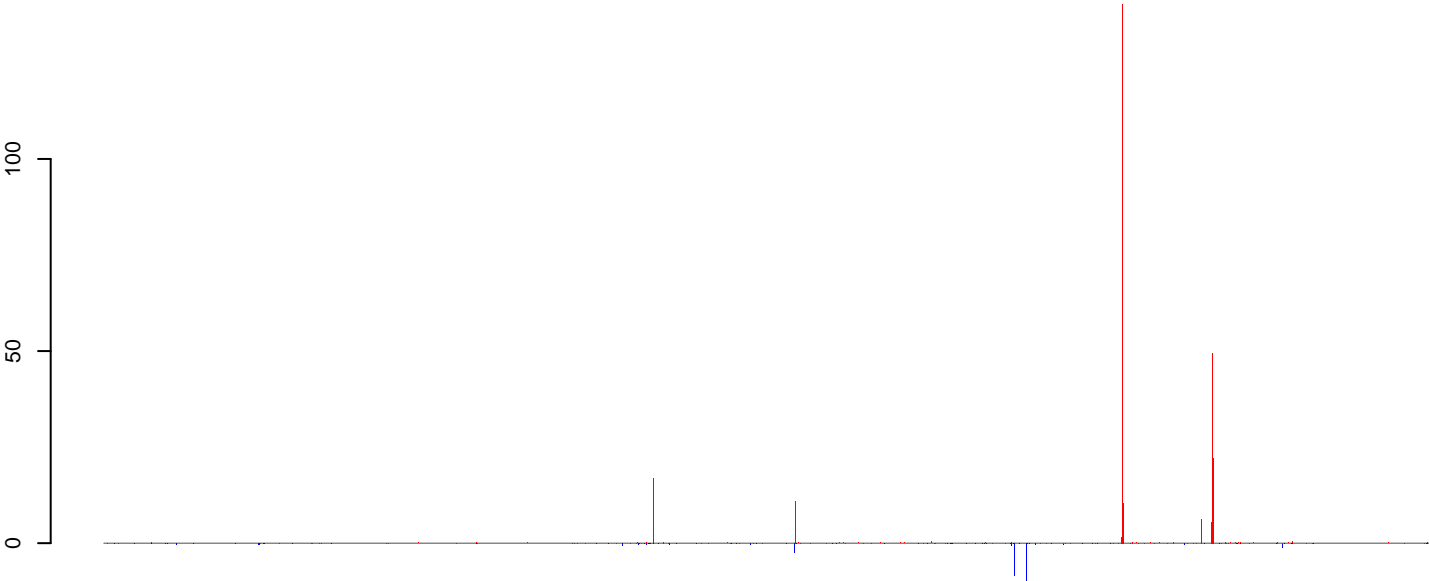
positive=295, negative=19, total=314

AeAlbo_Larvae_CT.24_35.rep



positive=149, negative=20, total=170

AeAlbo_Larvae_CT.rep

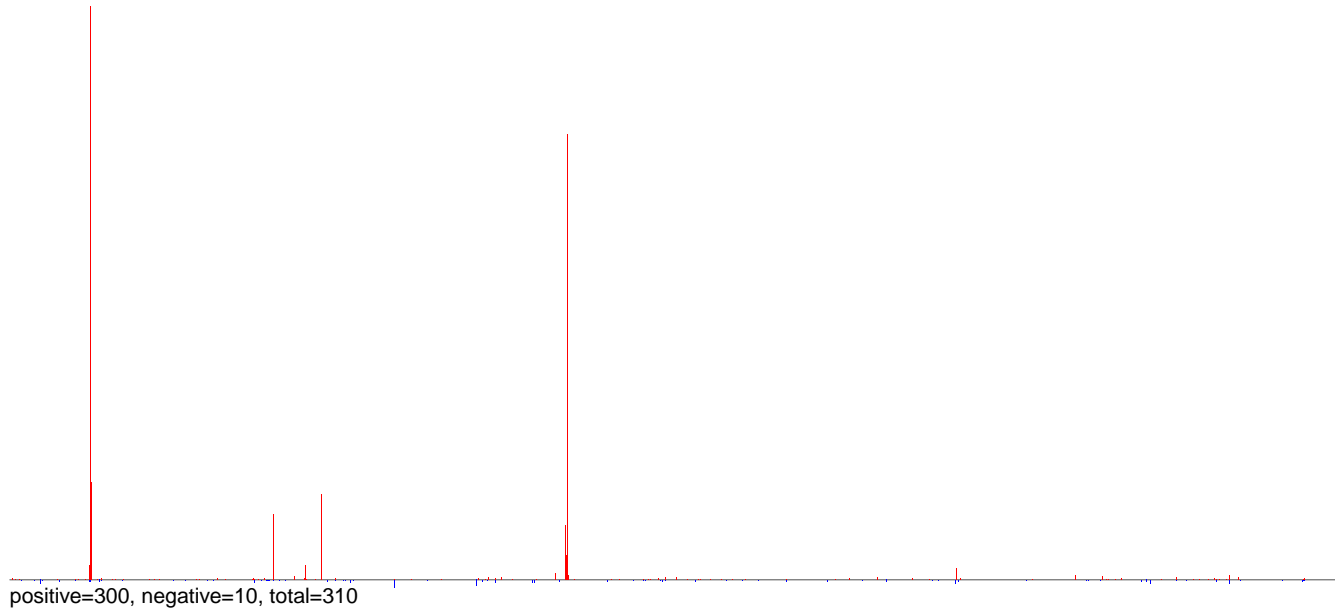


positive=444, negative=39, total=484

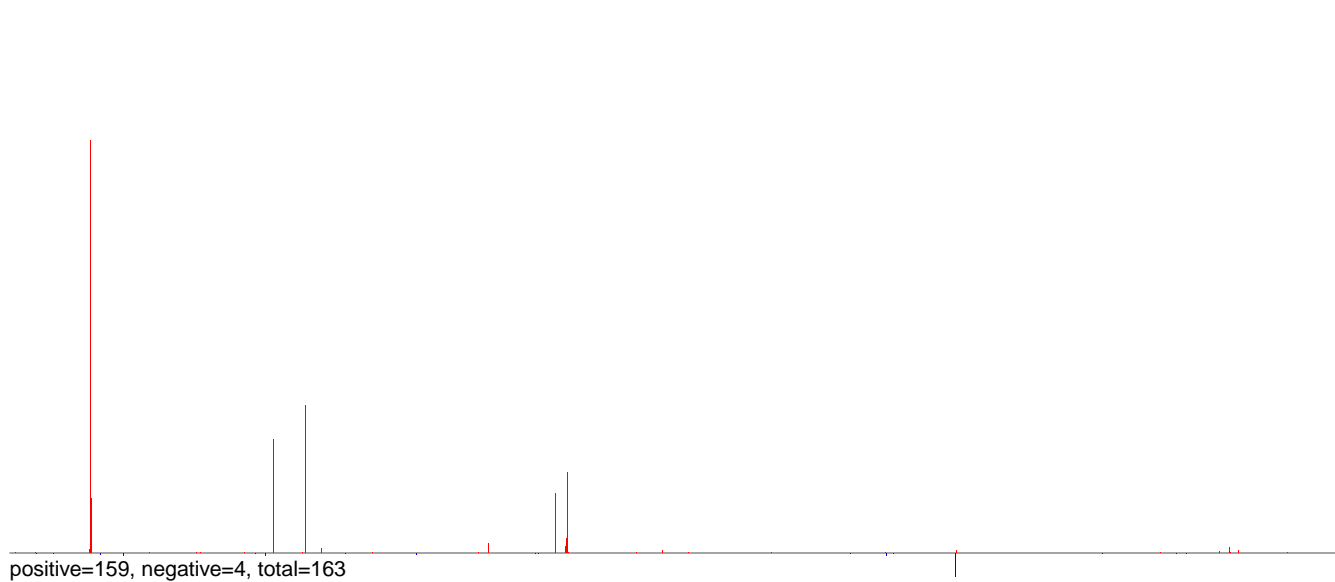
Window size=50, length=1482455, Wolbachia@Wolbachia_wPip:1-1482455

0 500000 1000000 1500000

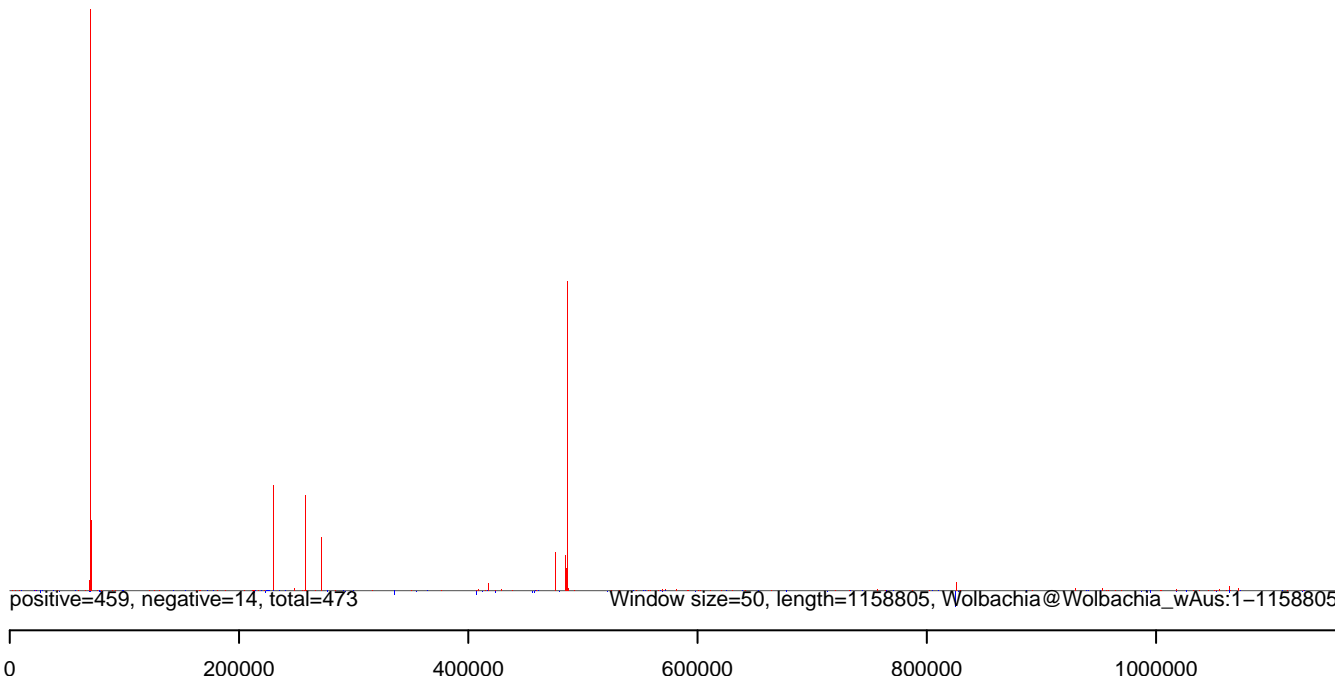
AeAlbo_Larvae_CT.18_23.rep



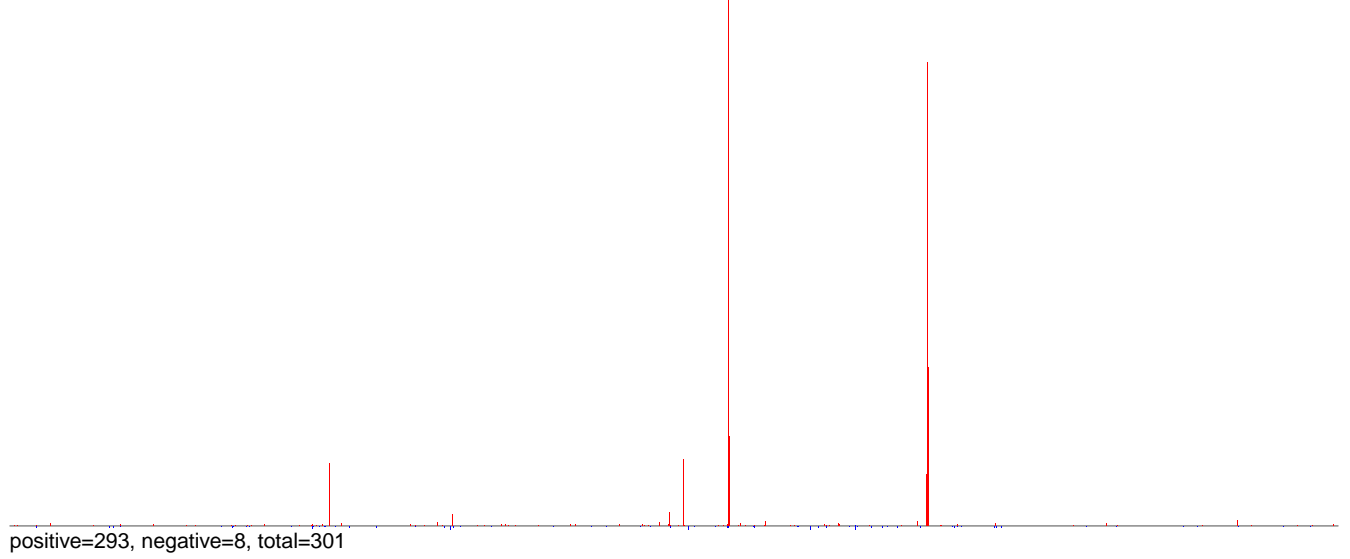
AeAlbo_Larvae_CT.24_35.rep



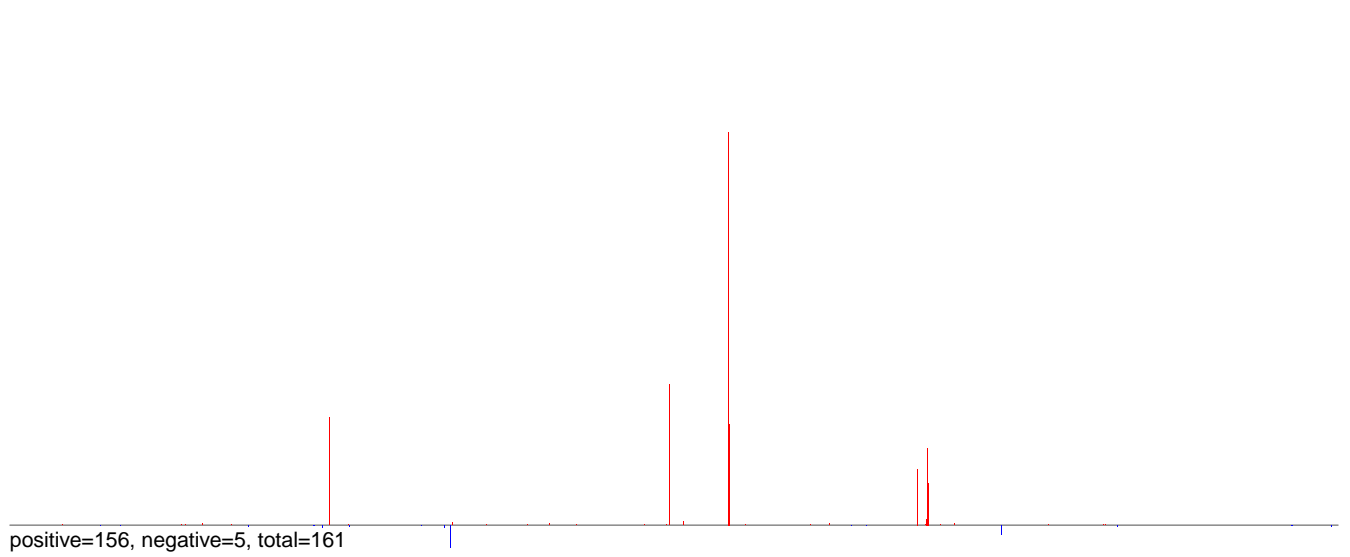
AeAlbo_Larvae_CT.rep



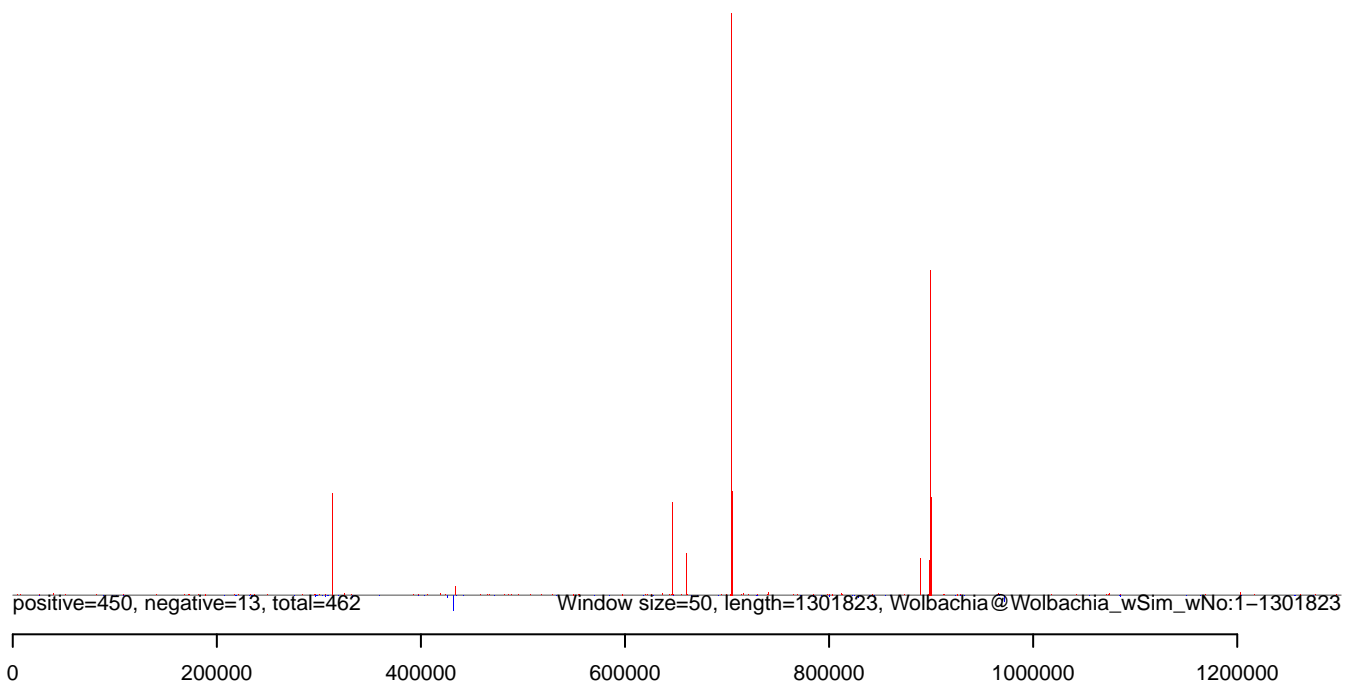
AeAlbo_Larvae_CT.18_23.rep



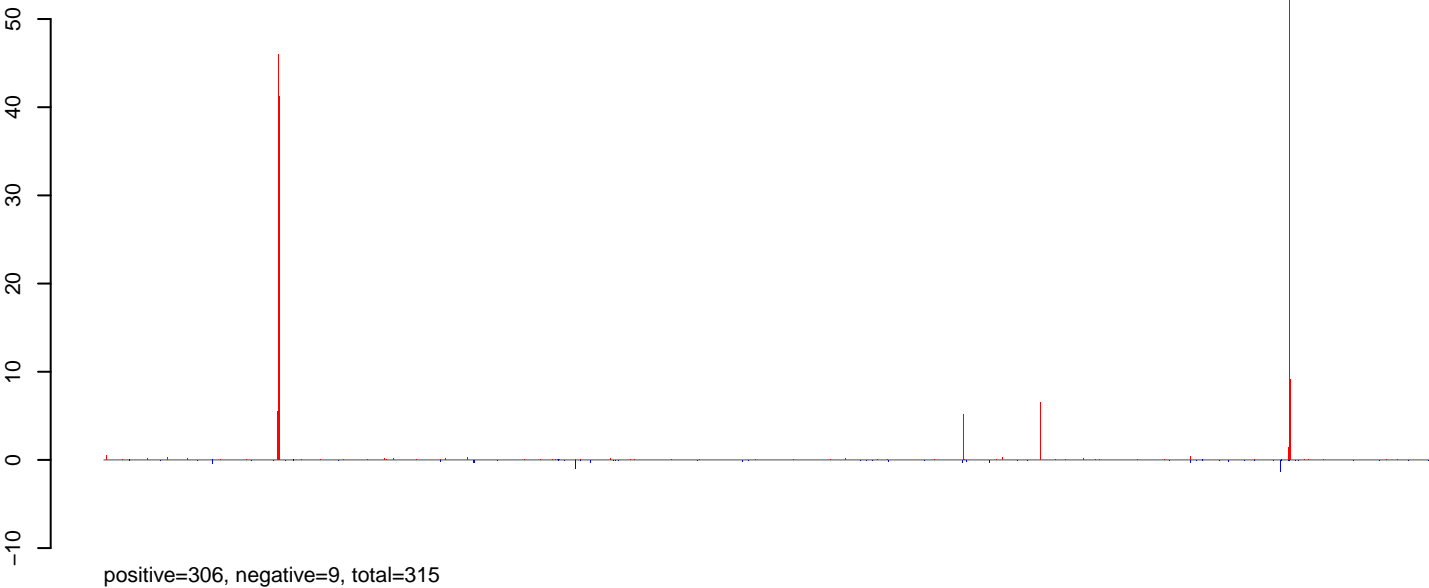
AeAlbo_Larvae_CT.24_35.rep



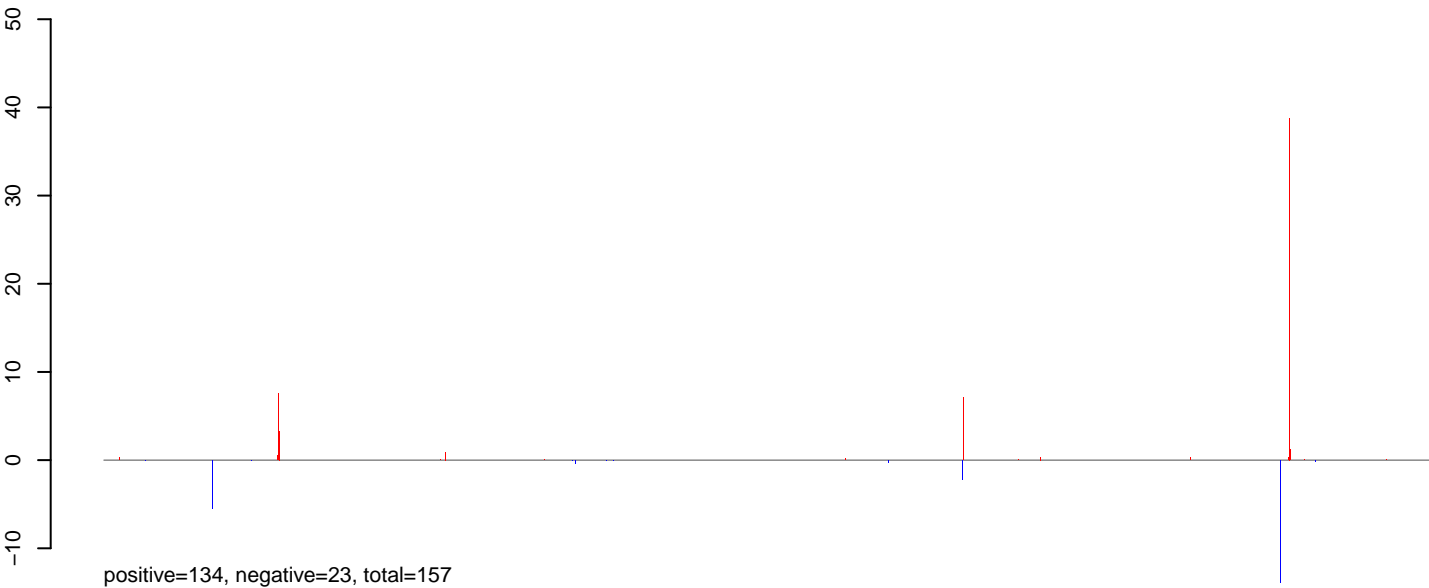
AeAlbo_Larvae_CT.rep



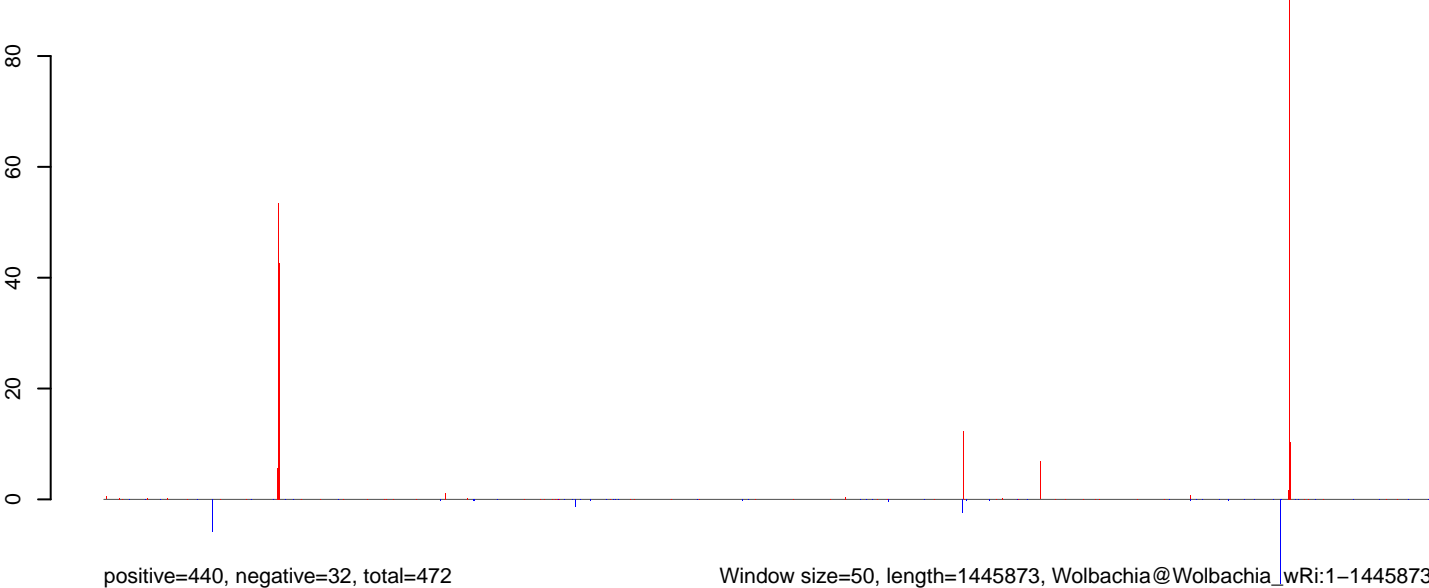
AeAlbo_Larvae_CT.18_23.rep



AeAlbo_Larvae_CT.24_35.rep



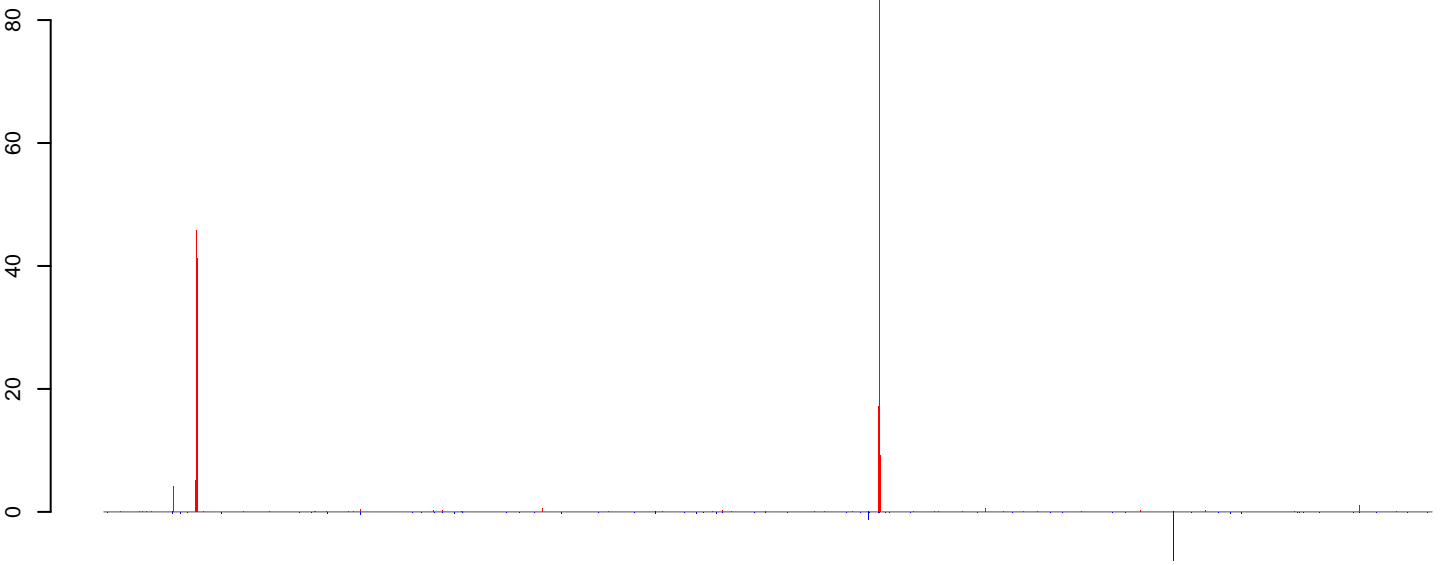
AeAlbo_Larvae_CT.rep



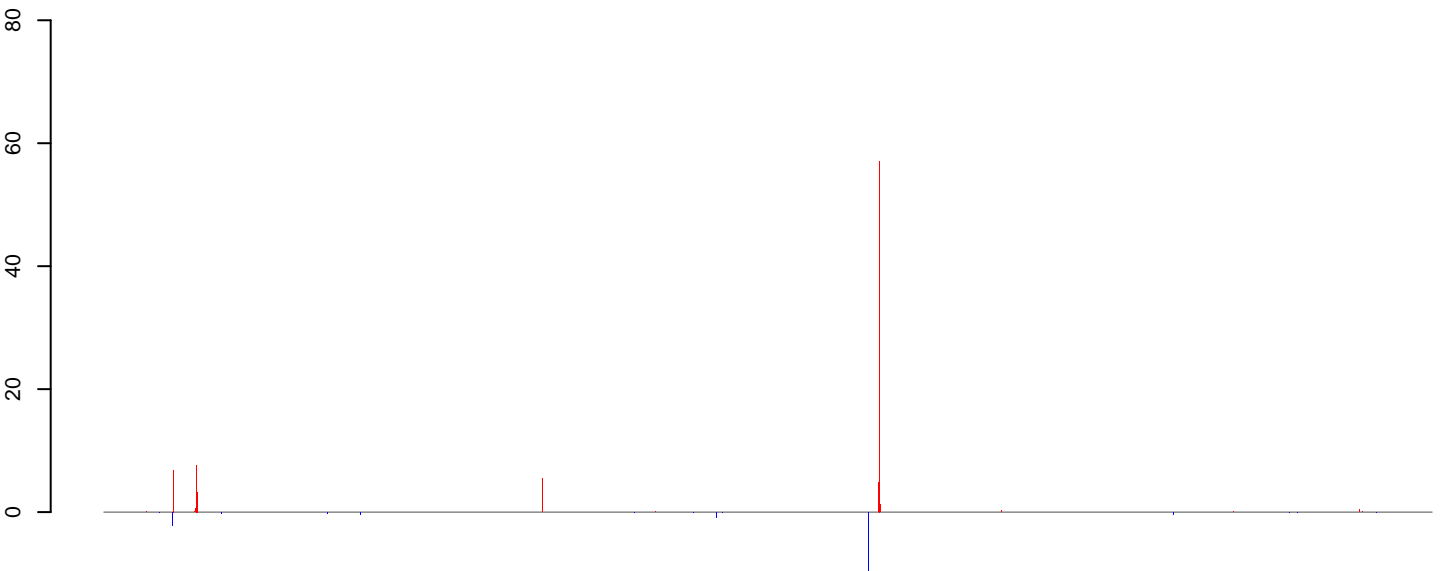
Window size=50, length=1445873, Wolbachia@Wolbachia_wRi:1-1445873

0 500000 1000000 1500000

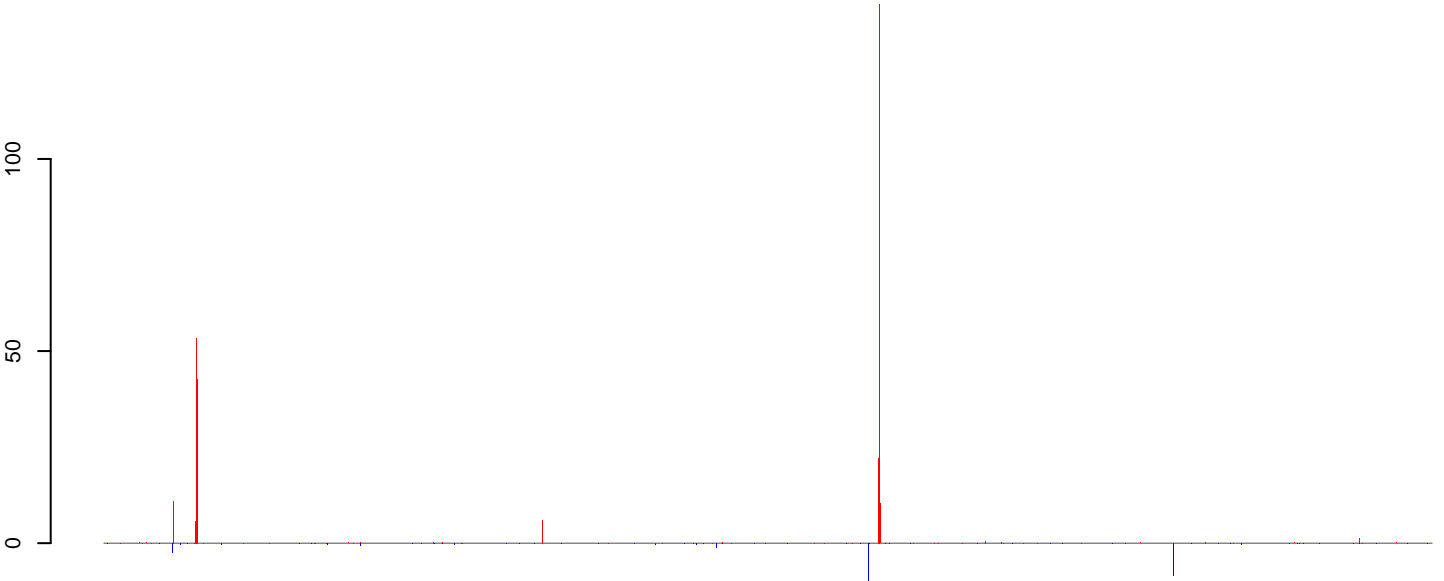
AeAlbo_Larvae_CT.18_23.rep



AeAlbo_Larvae_CT.24_35.rep



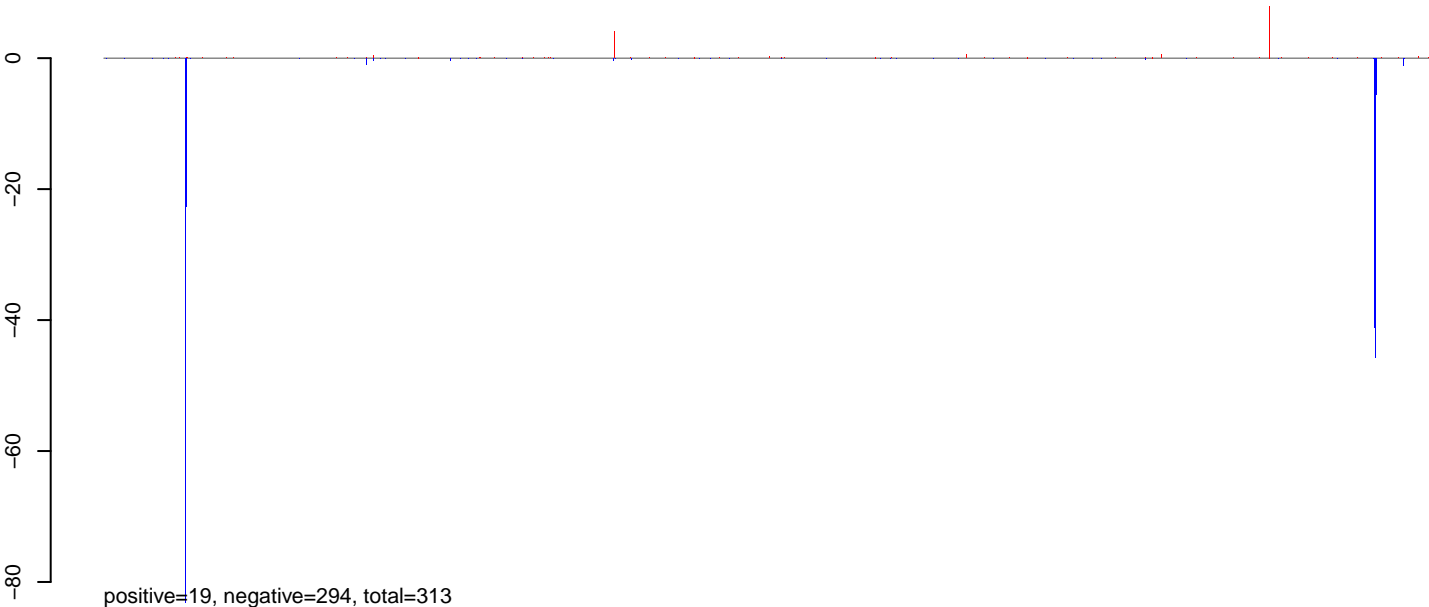
AeAlbo_Larvae_CT.rep



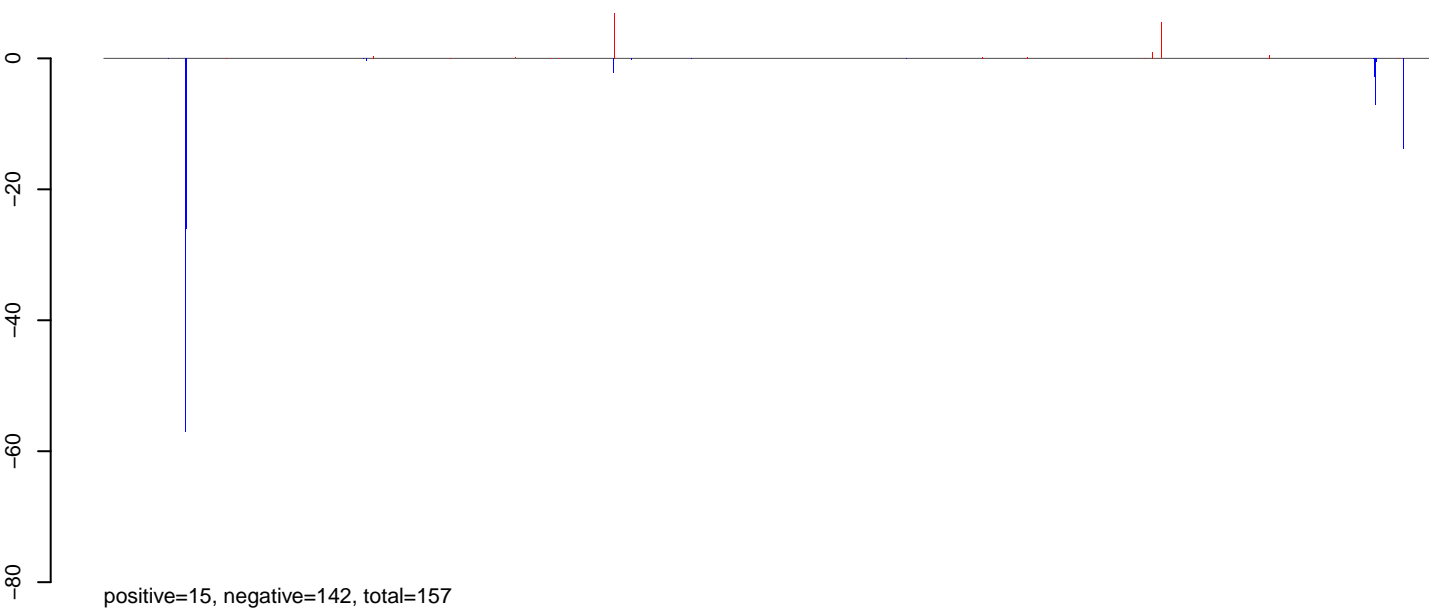
Window size=50, length=1236914, Wolbachia@Wolbachia_wAna_India:1-1236914

0 200000 400000 600000 800000 1000000 1200000

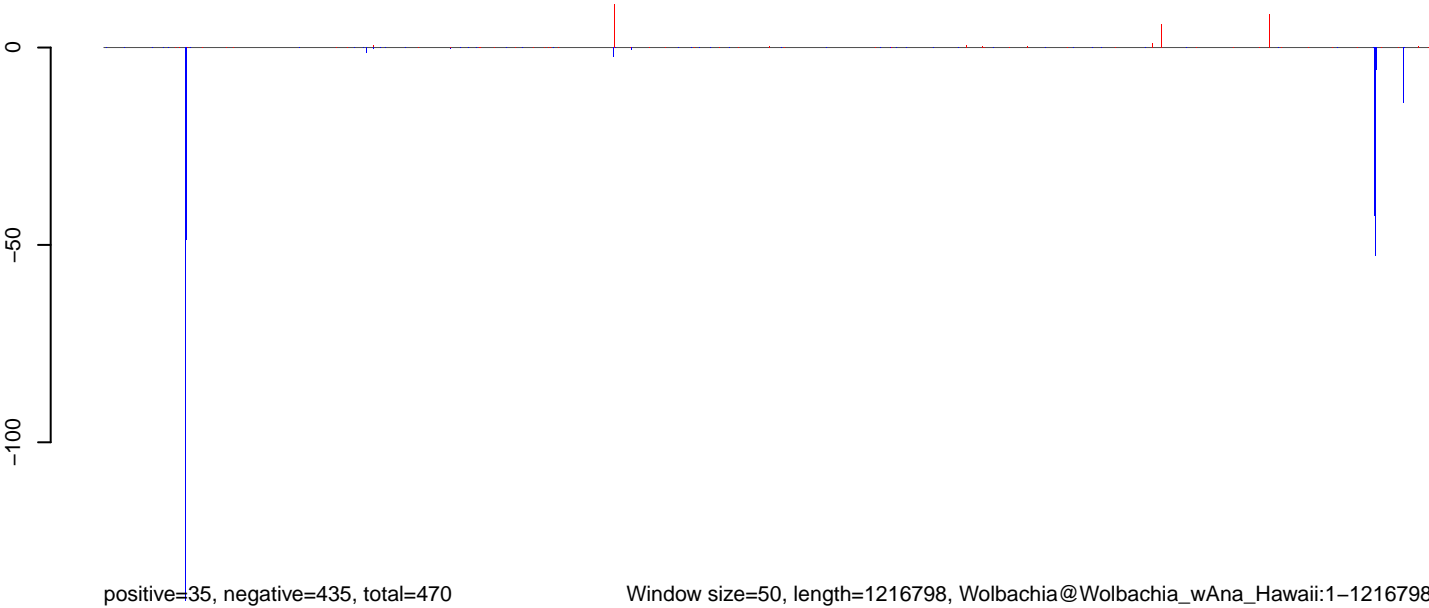
AeAlbo_Larvae_CT.18_23.rep



AeAlbo_Larvae_CT.24_35.rep



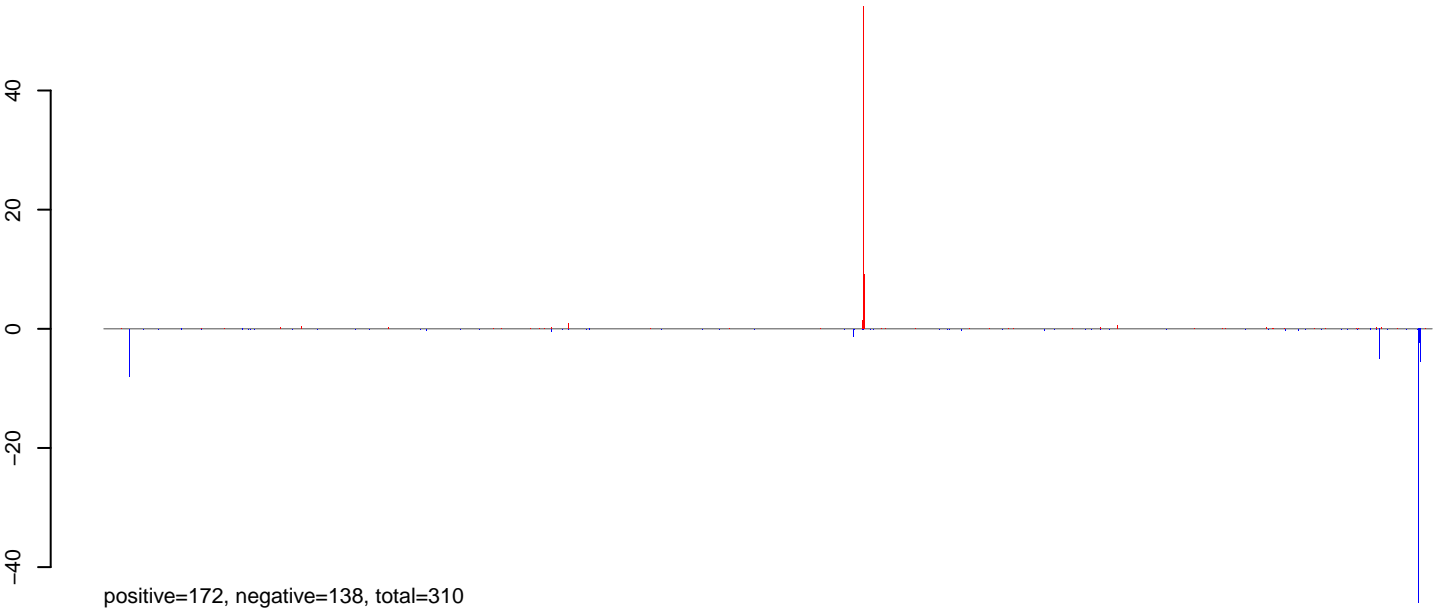
AeAlbo_Larvae_CT.rep



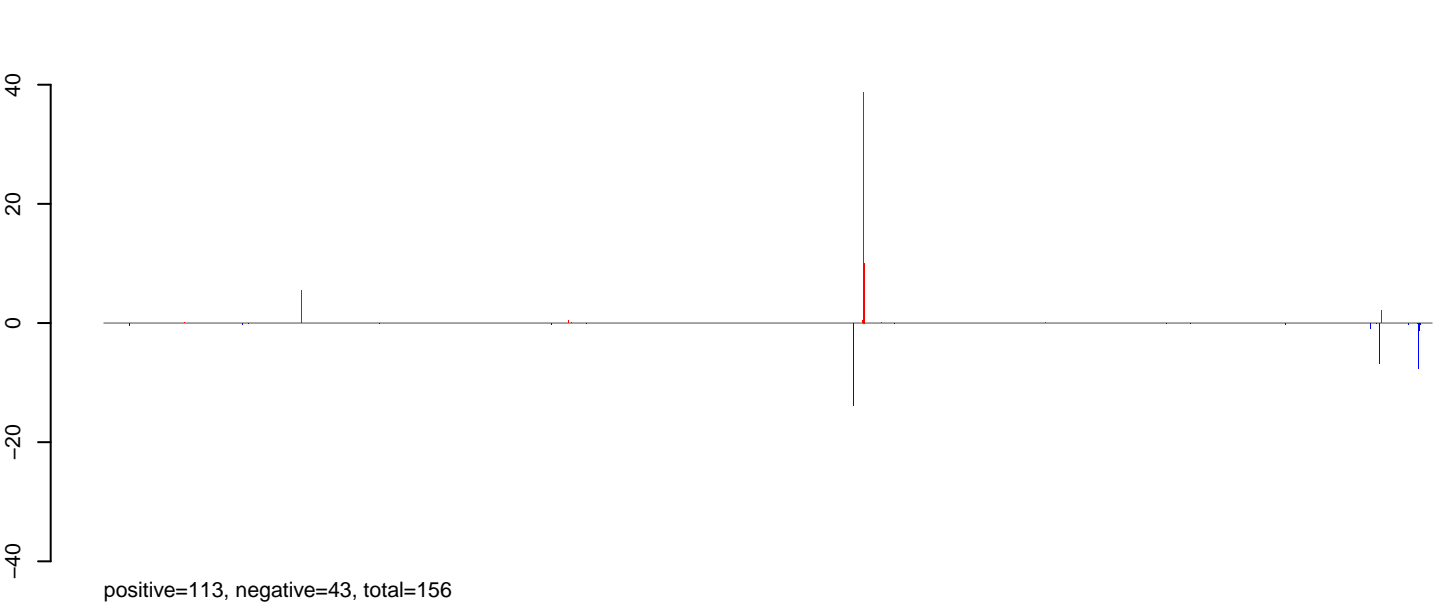
Window size=50, length=1216798, Wolbachia@Wolbachia_wAna_Hawaii:1-1216798

0 200000 400000 600000 800000 1000000 1200000

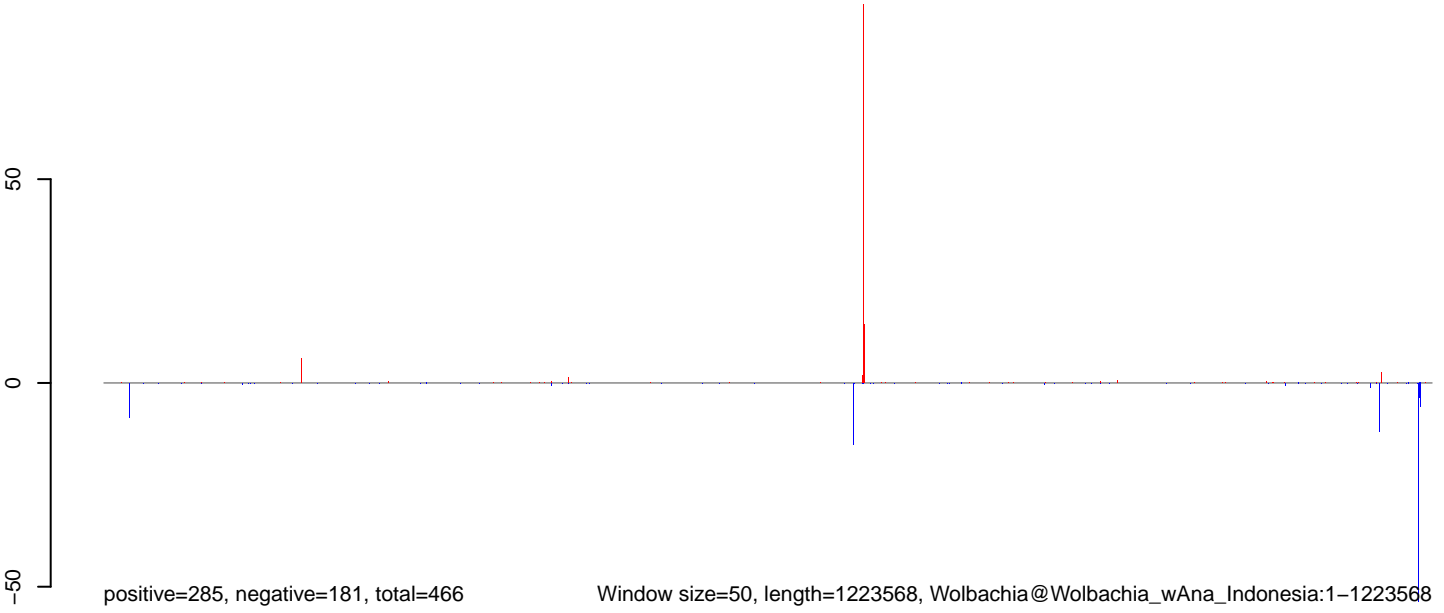
AeAlbo_Larvae_CT.18_23.rep



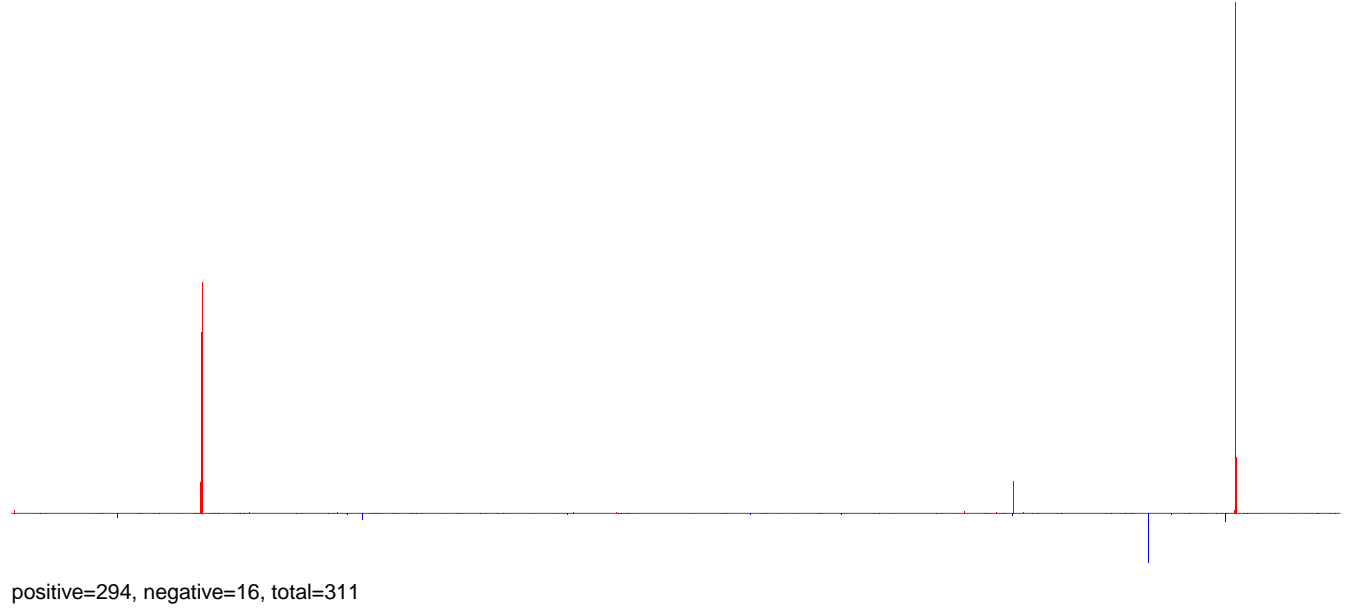
AeAlbo_Larvae_CT.24_35.rep



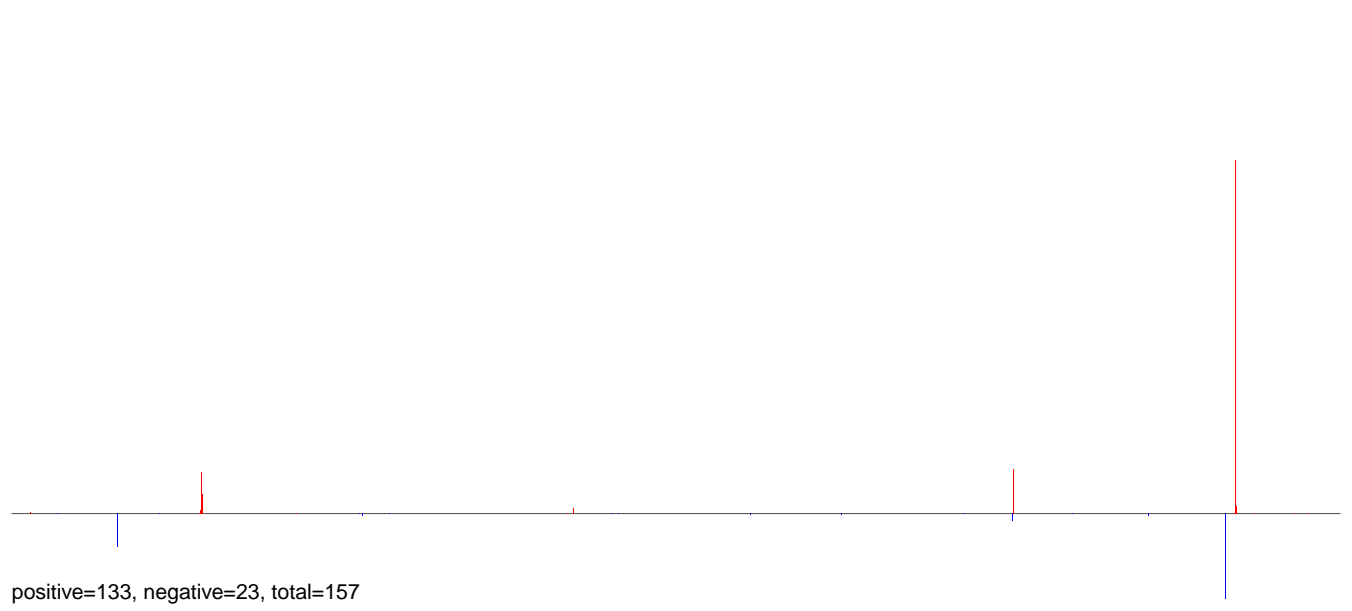
AeAlbo_Larvae_CT.rep



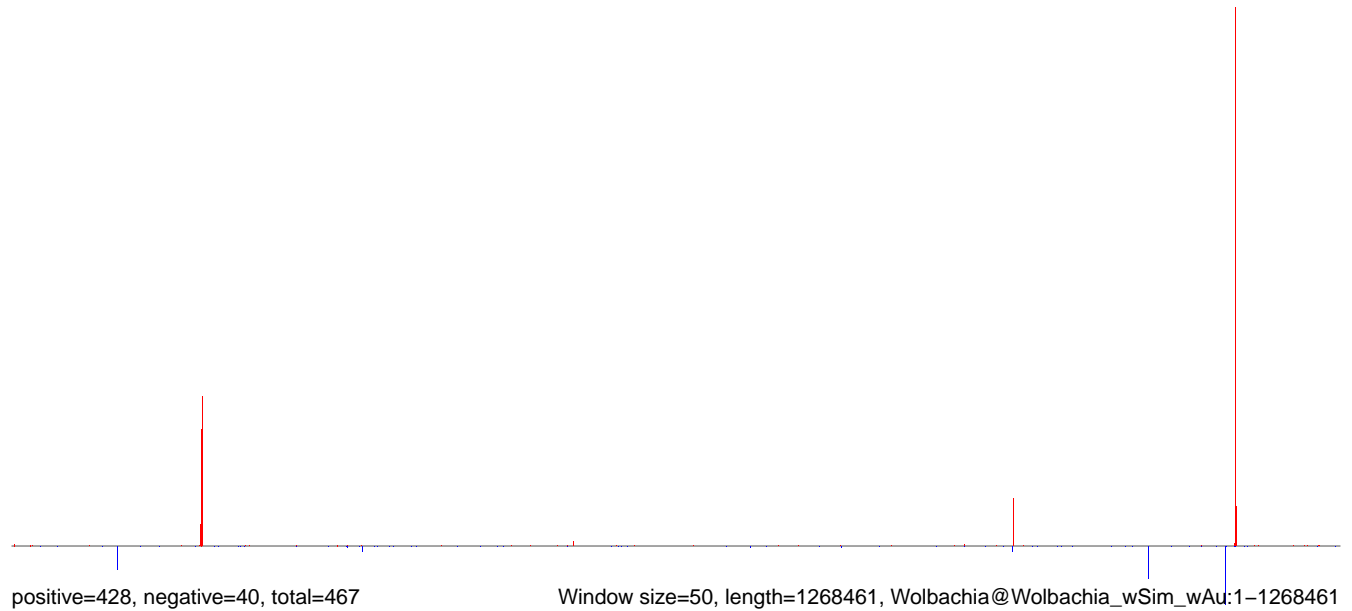
AeAlbo_Larvae_CT.18_23.rep



AeAlbo_Larvae_CT.24_35.rep



AeAlbo_Larvae_CT.rep



0 200000 400000 600000 800000 1000000 1200000

AeAlbo_Larvae_CT.18_23.rep



positive=302, negative=9, total=311

AeAlbo_Larvae_CT.24_35.rep



positive=138, negative=17, total=156

AeAlbo_Larvae_CT.rep

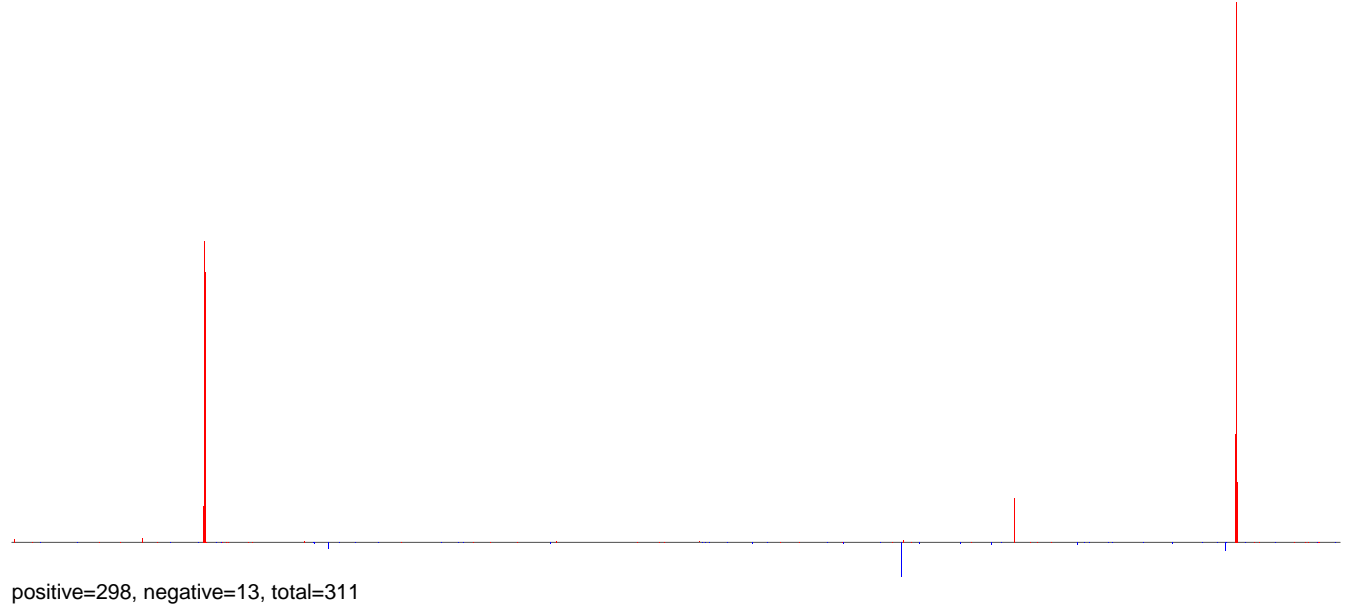


positive=440, negative=26, total=466

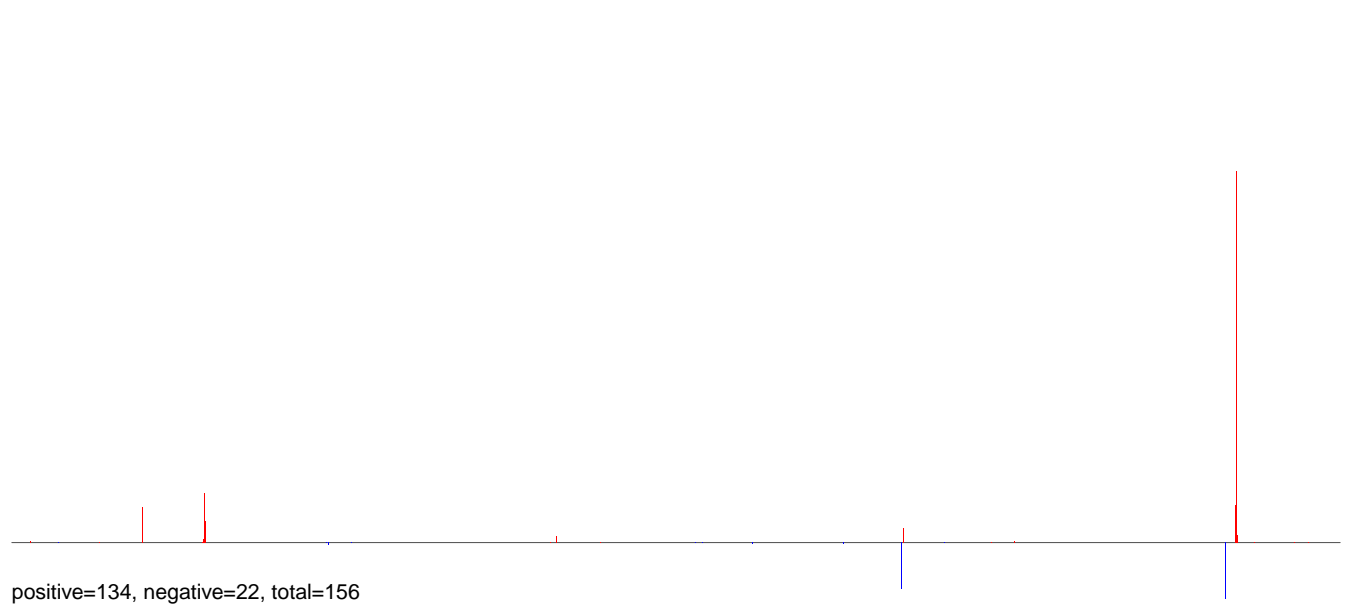
Window size=50, length=1295804, Wolbachia@Wolbachia_wSim_wHa:1-1295804

0 200000 400000 600000 800000 1000000 1200000

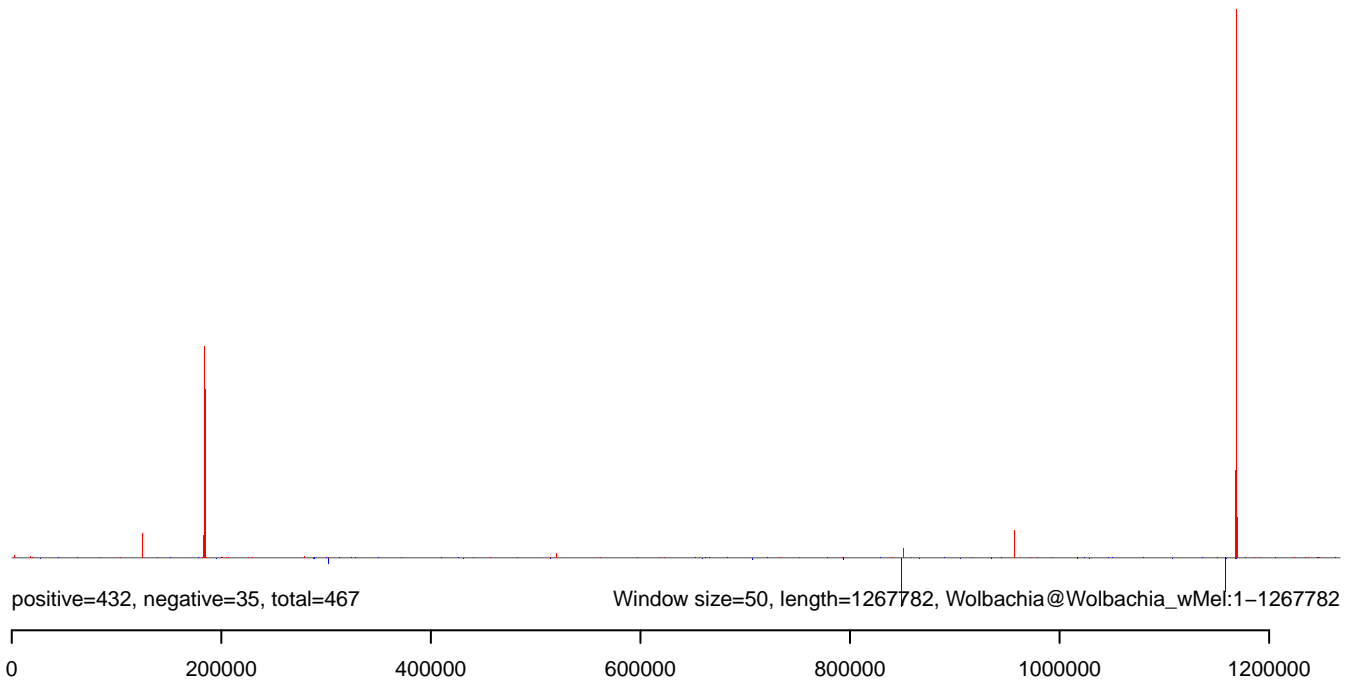
AeAlbo_Larvae_CT.18_23.rep



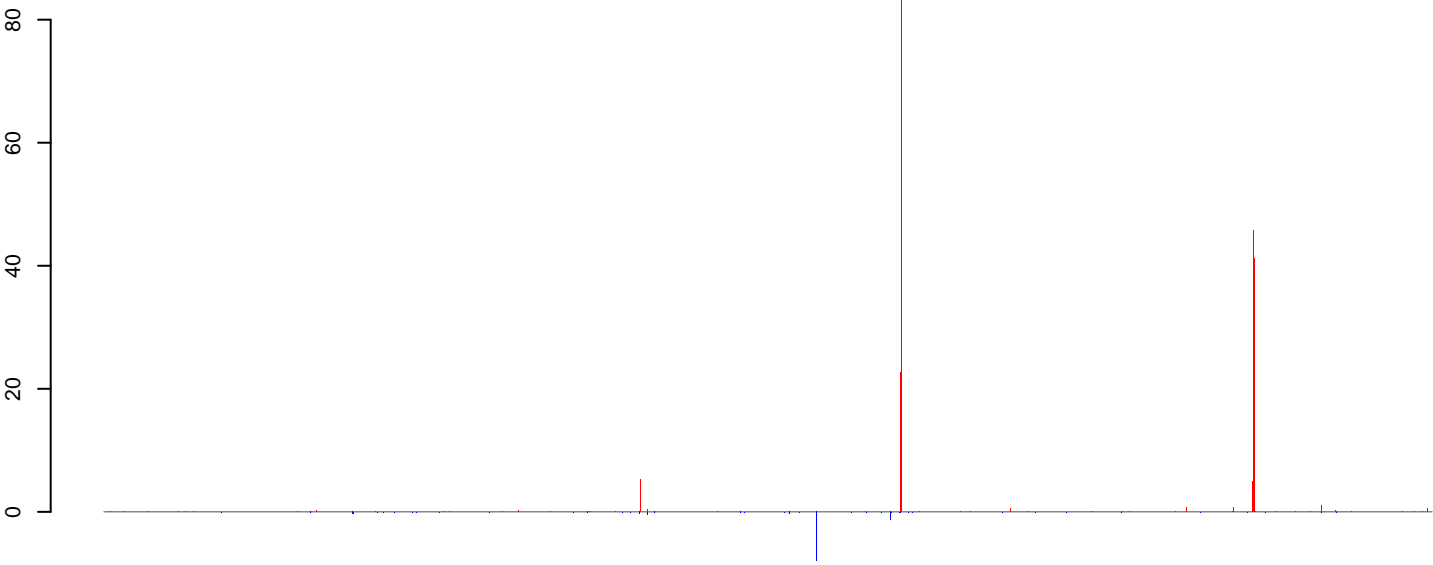
AeAlbo_Larvae_CT.24_35.rep



AeAlbo_Larvae_CT.rep

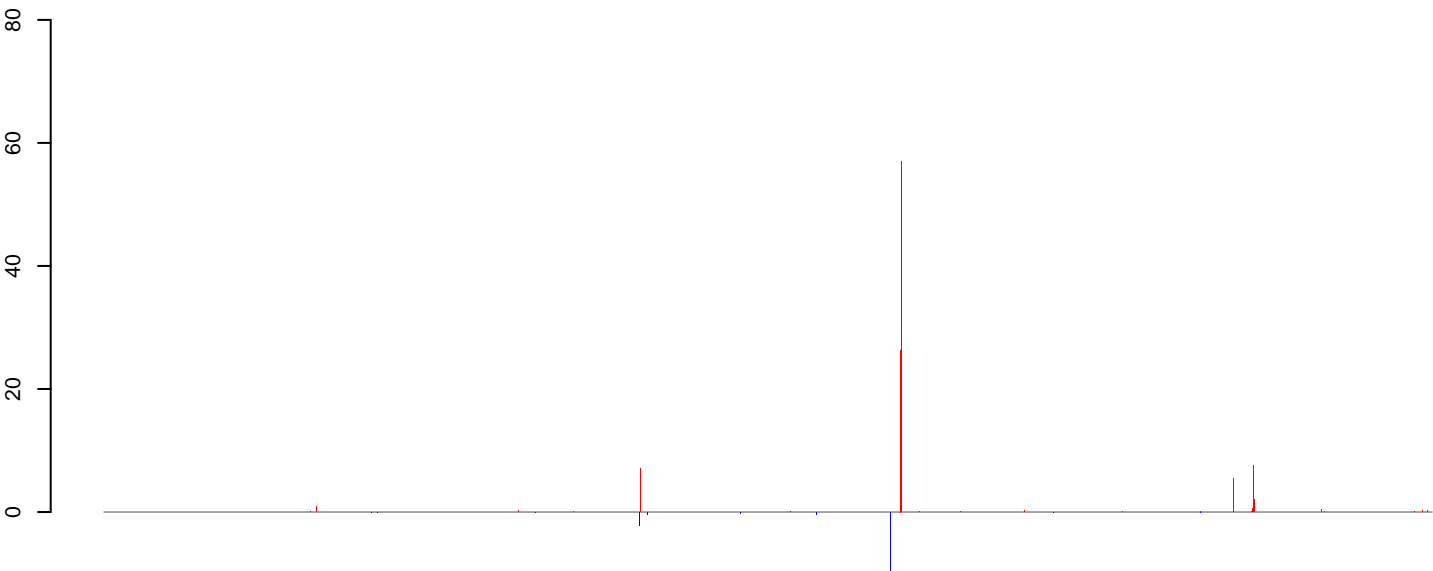


AeAlbo_Larvae_CT.18_23.rep



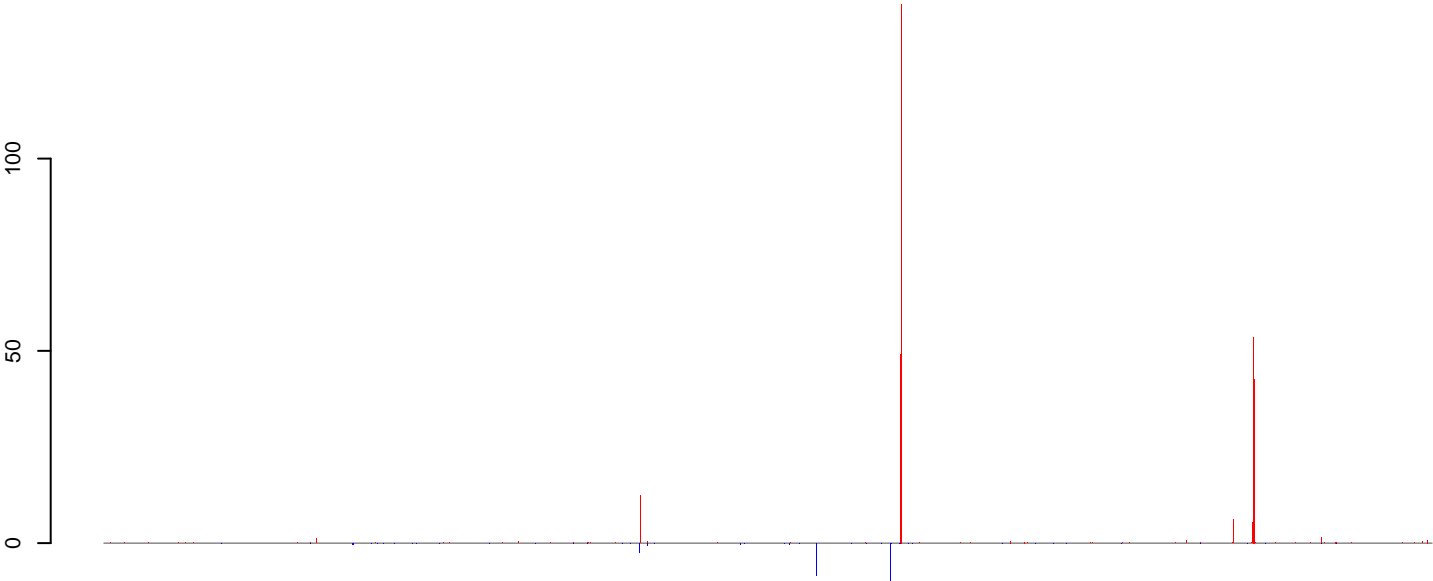
positive=298, negative=14, total=312

AeAlbo_Larvae_CT.24_35.rep



positive=137, negative=17, total=154

AeAlbo_Larvae_CT.rep

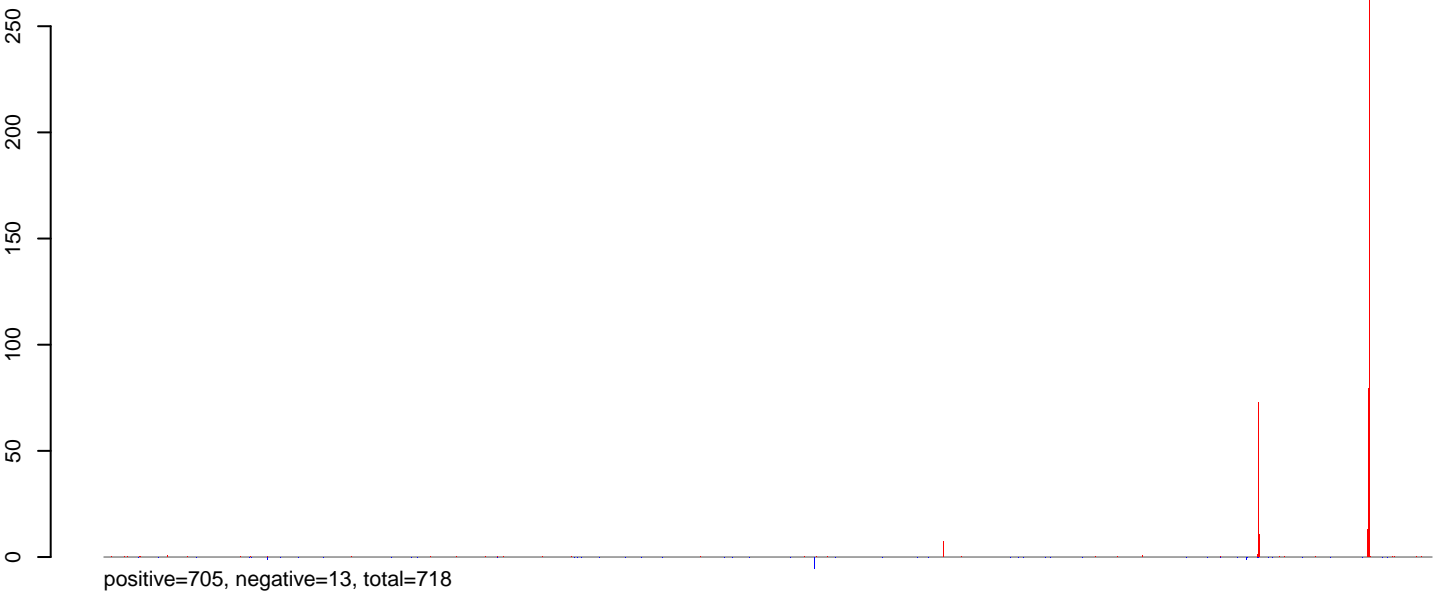


positive=435, negative=32, total=467

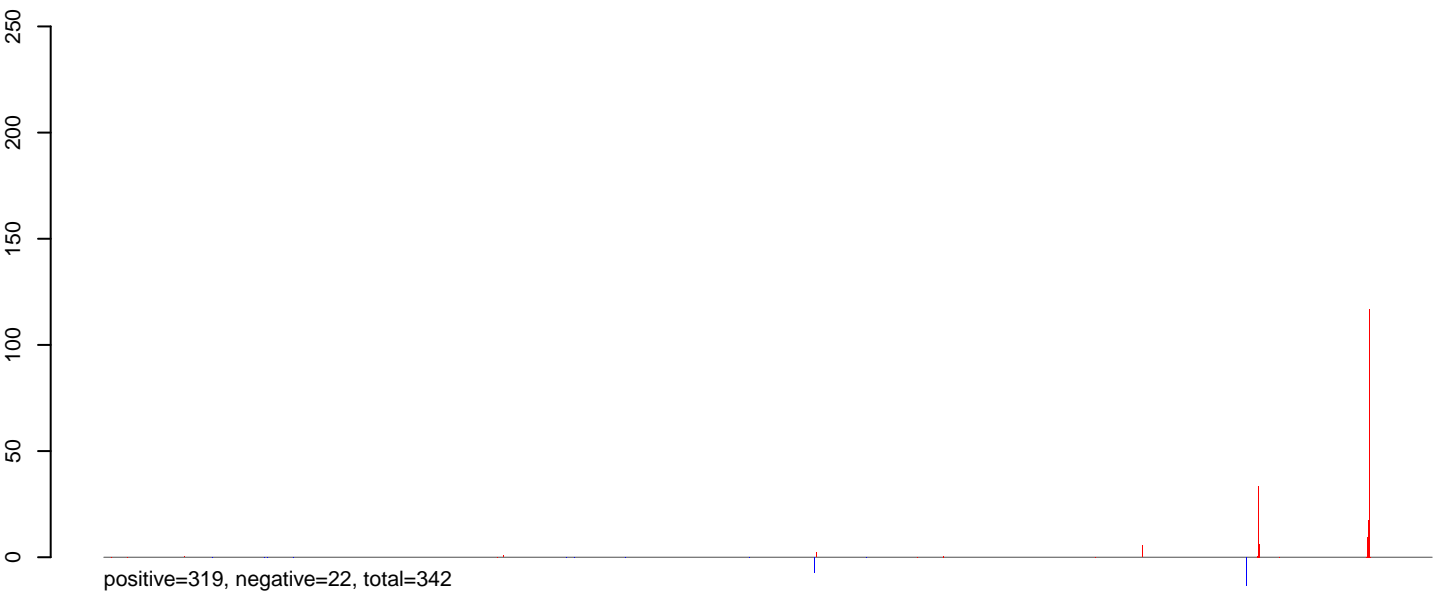
Window size=50, length=1211929, Wolbachia@Wolbachia_wVitA:1-1211929

0 200000 400000 600000 800000 1000000 1200000

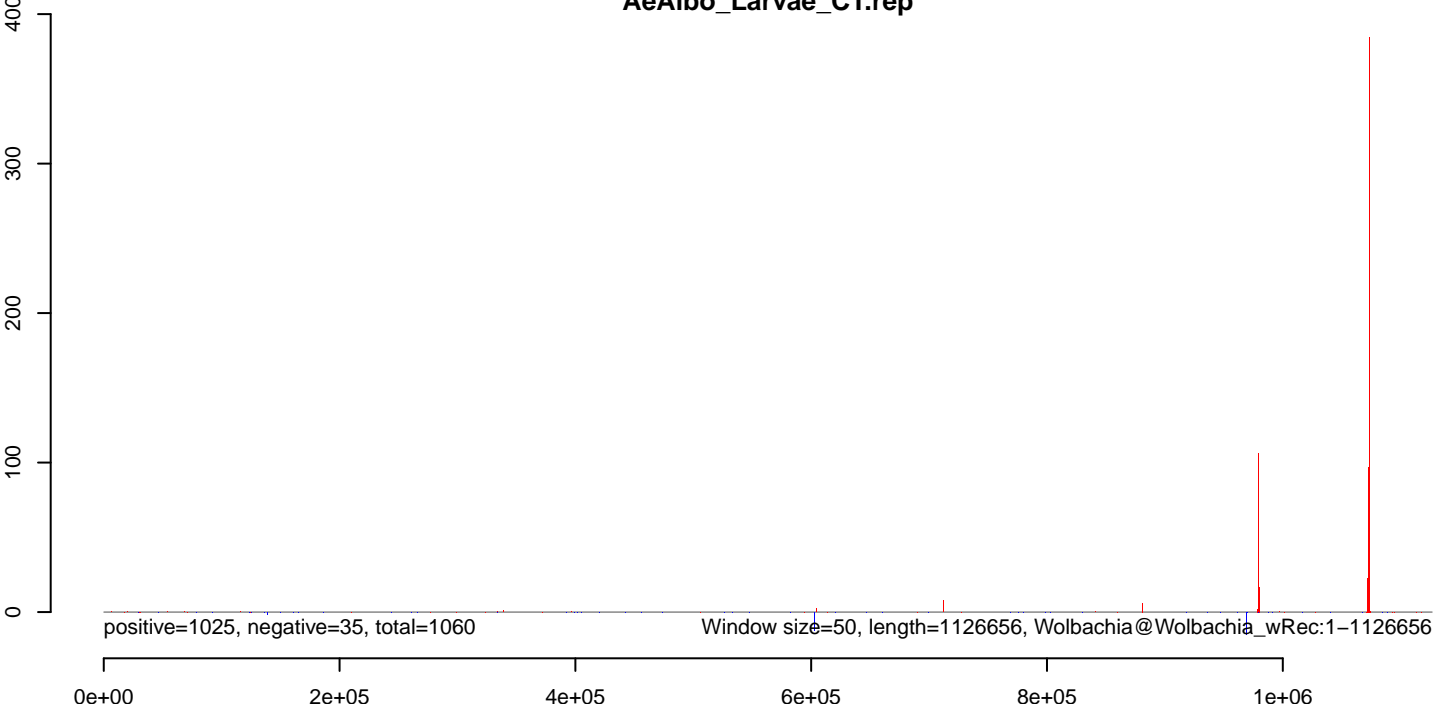
AeAlbo_Larvae_CT.18_23.rep



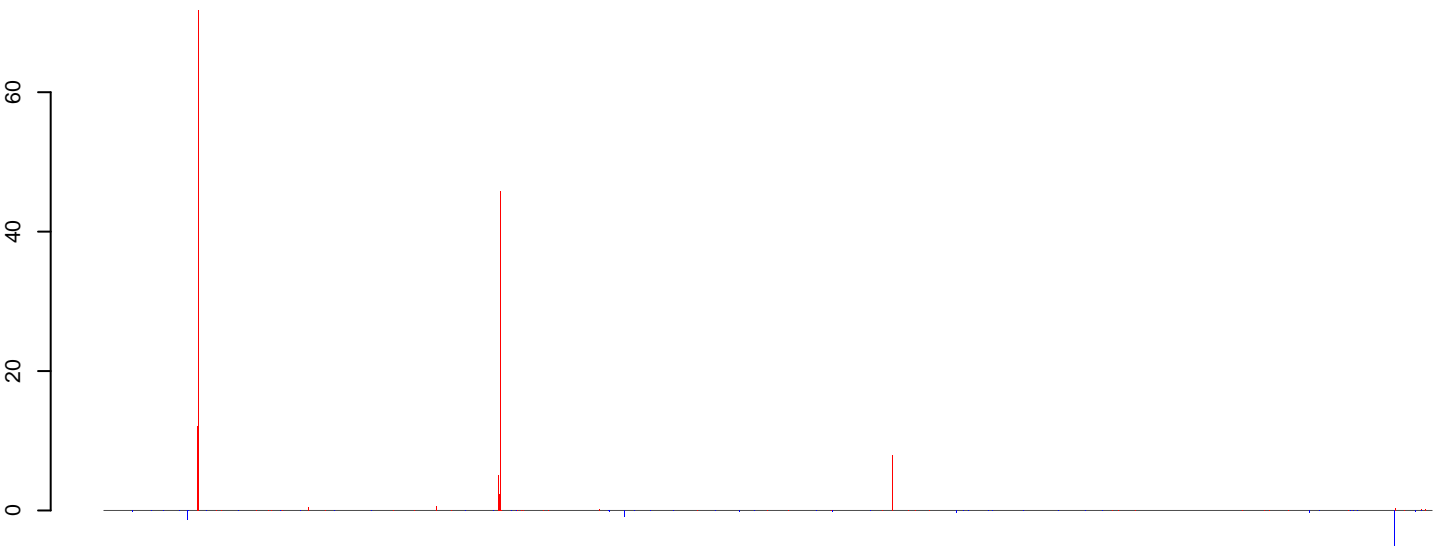
AeAlbo_Larvae_CT.24_35.rep



AeAlbo_Larvae_CT.rep

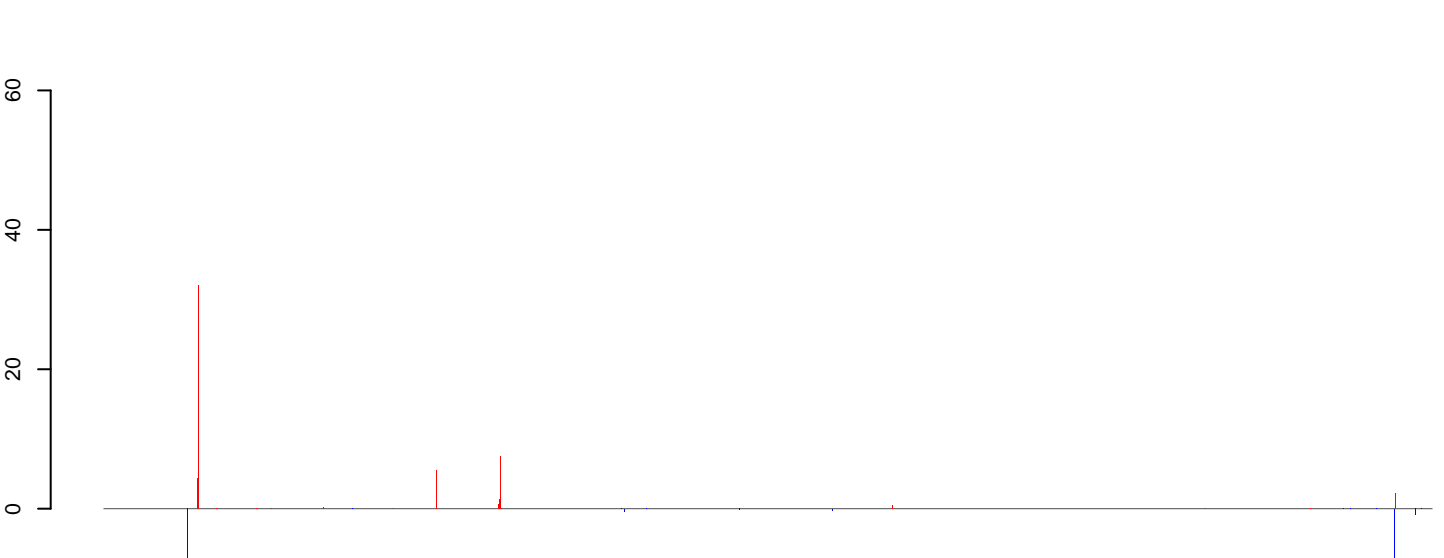


AeAlbo_Larvae_CT.18_23.rep



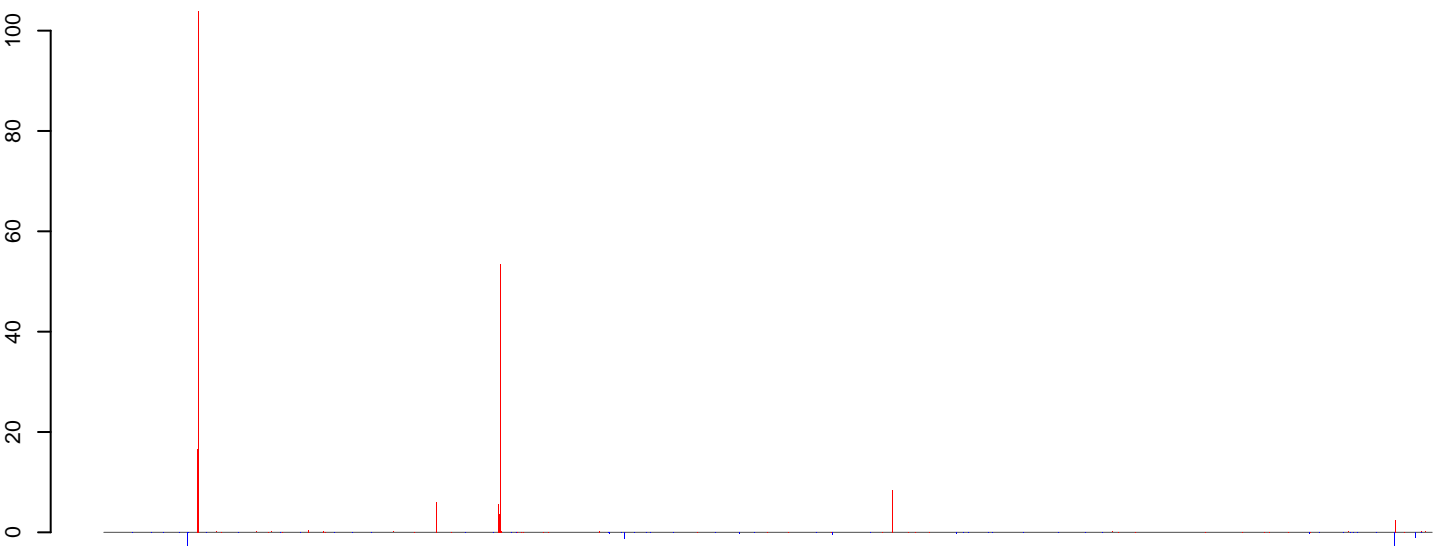
positive=298, negative=12, total=310

AeAlbo_Larvae_CT.24_35.rep



positive=133, negative=23, total=156

AeAlbo_Larvae_CT.rep



positive=431, negative=36, total=467

Window size=50, length=1239155, Wolbachia@Wolbachia_wMelPop:1-1239155

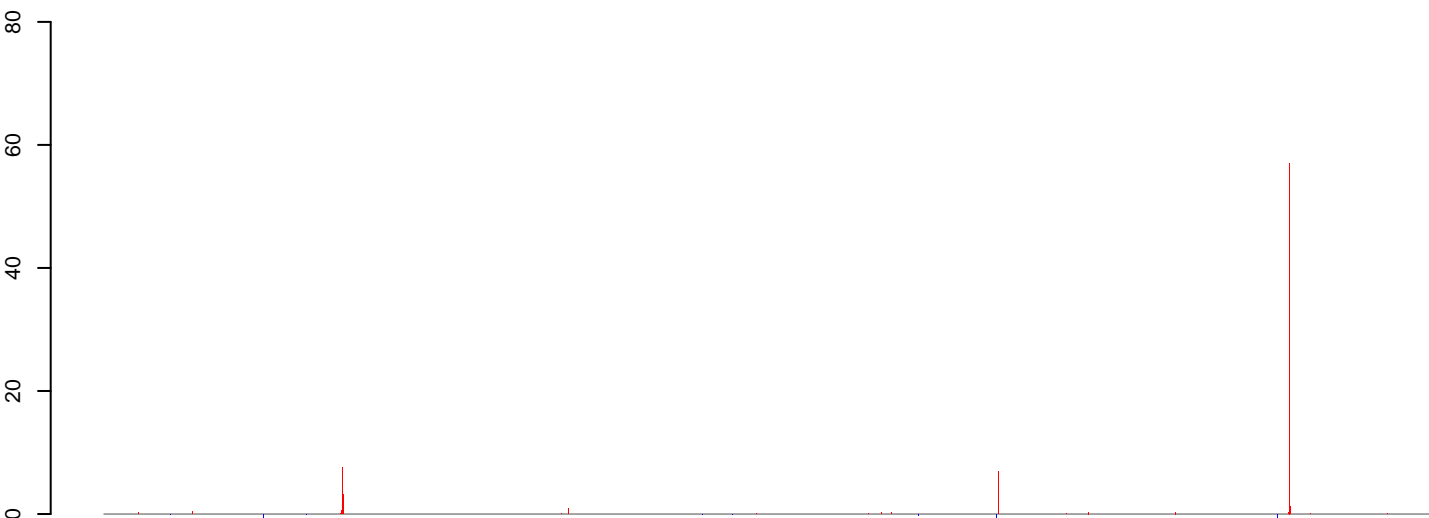
0 200000 400000 600000 800000 1000000 1200000

AeAlbo_Larvae_CT.18_23.rep



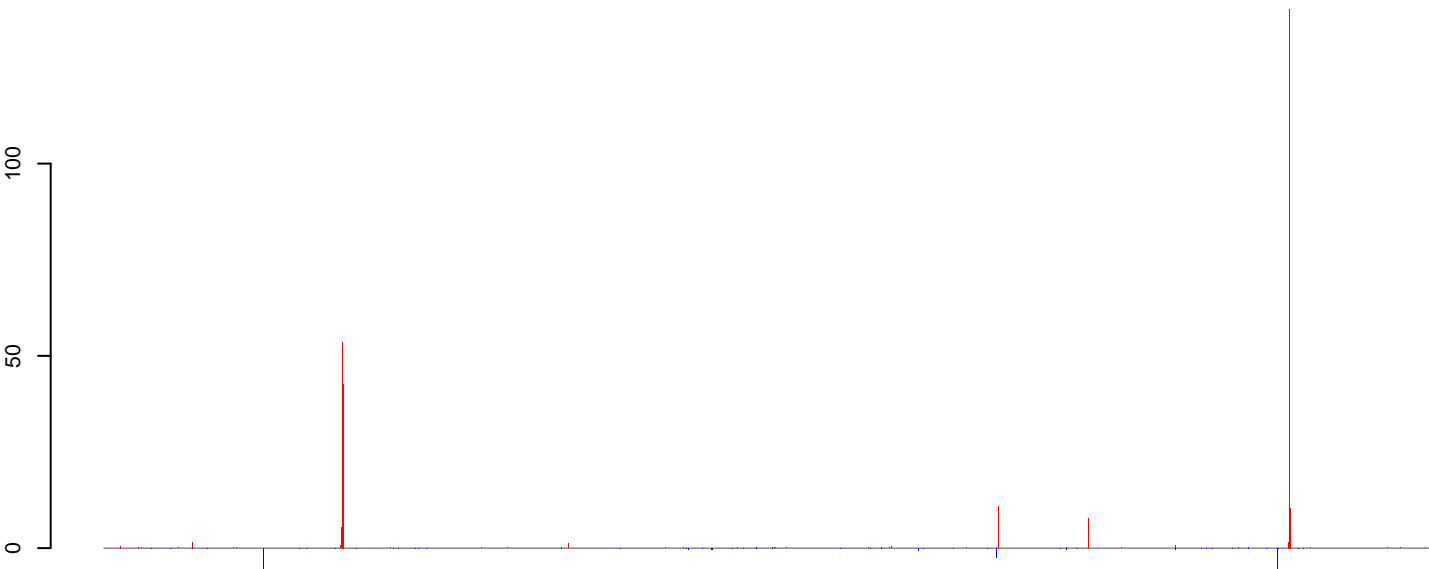
positive=304, negative=8, total=311

AeAlbo_Larvae_CT.24_35.rep



positive=135, negative=22, total=157

AeAlbo_Larvae_CT.rep

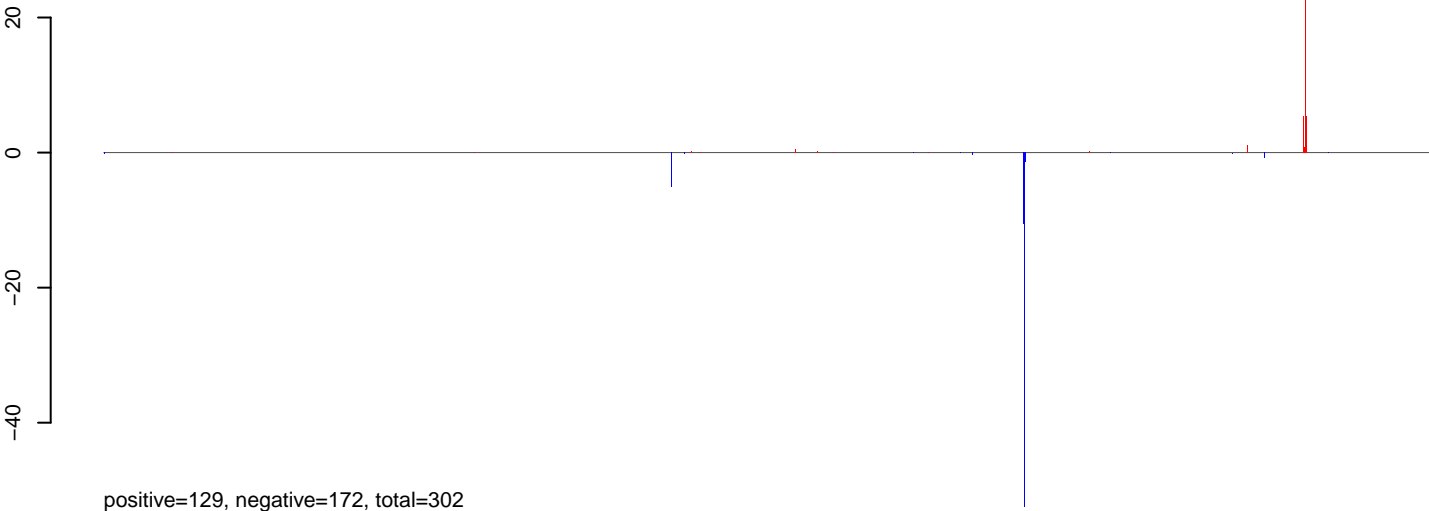


positive=439, negative=30, total=468

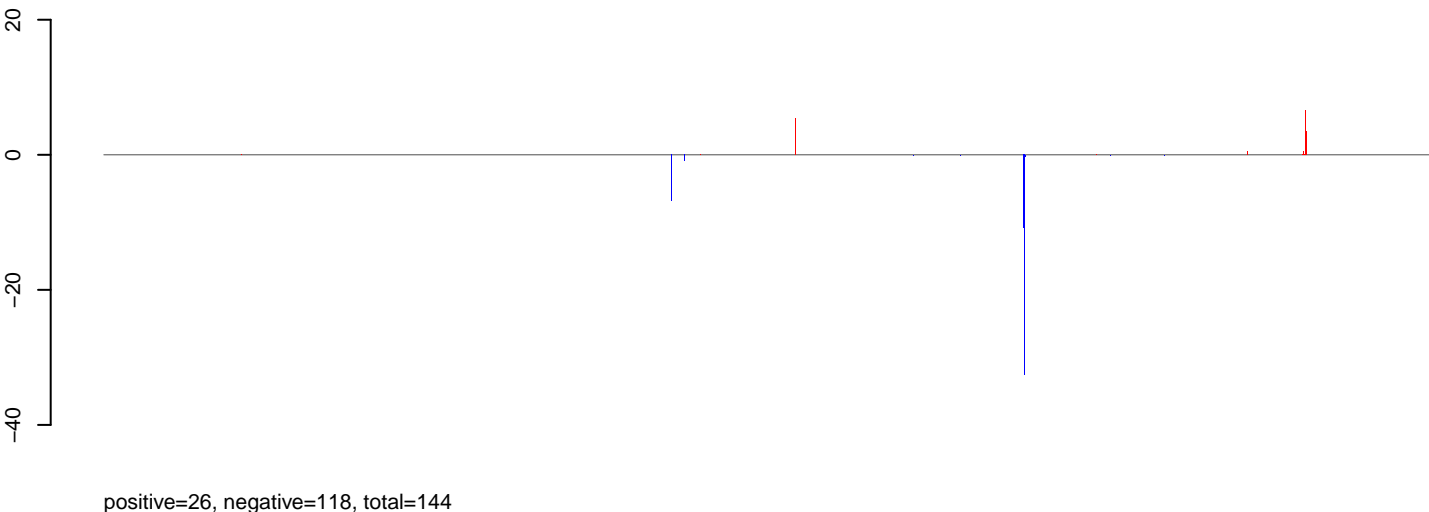
Window size=50, length=1049170, Wolbachia@Wolbachia_wUni:1-1049170

0e+00 2e+05 4e+05 6e+05 8e+05 1e+06

AeAlbo_Larvae_CT.18_23.rep



AeAlbo_Larvae_CT.24_35.rep



AeAlbo_Larvae_CT.rep

