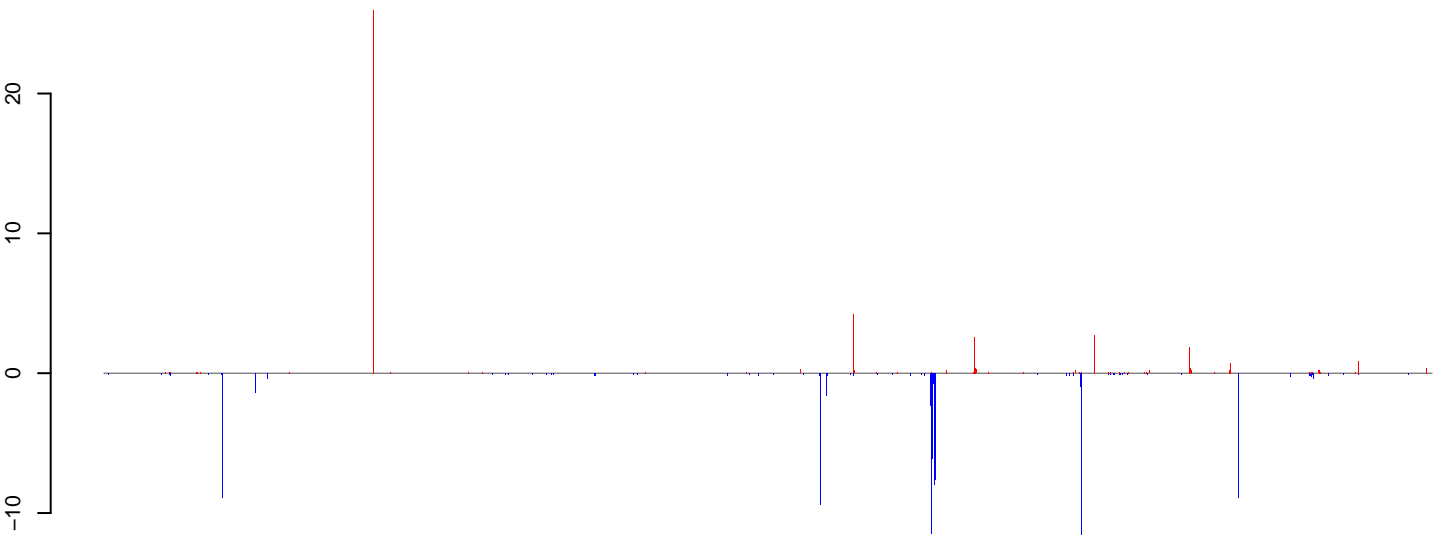


AeAlbo_FemaleMidgut_Ctrl_JG.18_23.rep



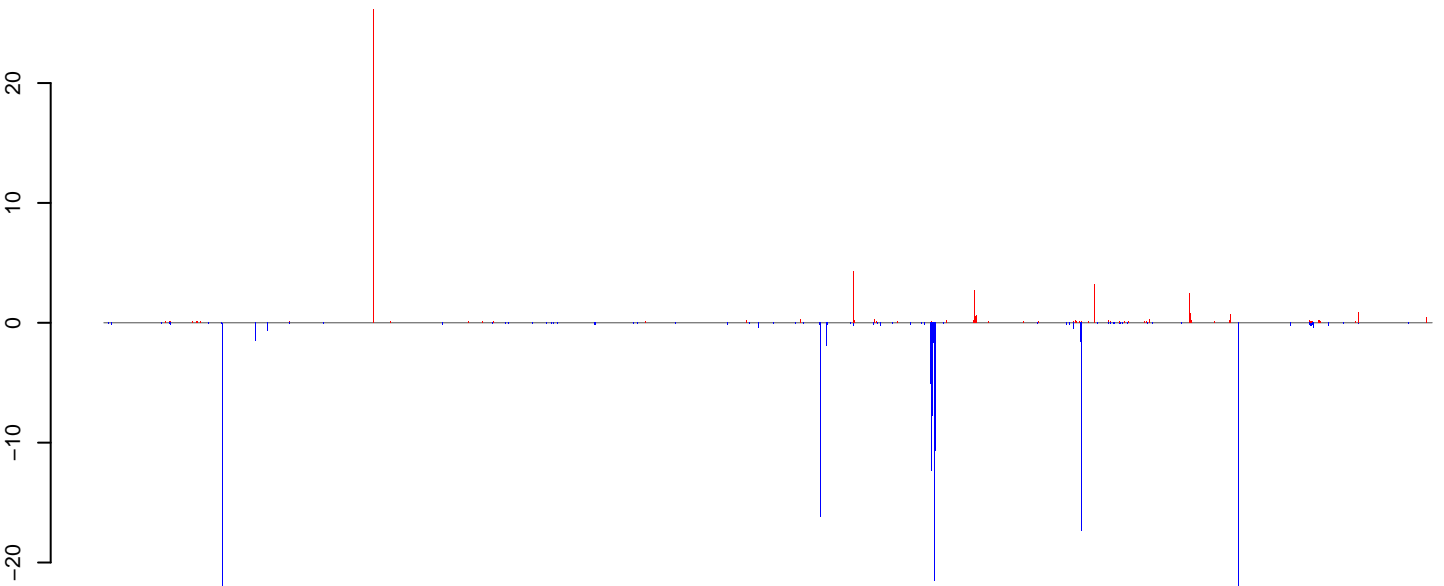
positive=53, negative=234, total=287

AeAlbo_FemaleMidgut_Ctrl_JG.24_35.rep



positive=6, negative=174, total=180

AeAlbo_FemaleMidgut_Ctrl_JG.rep

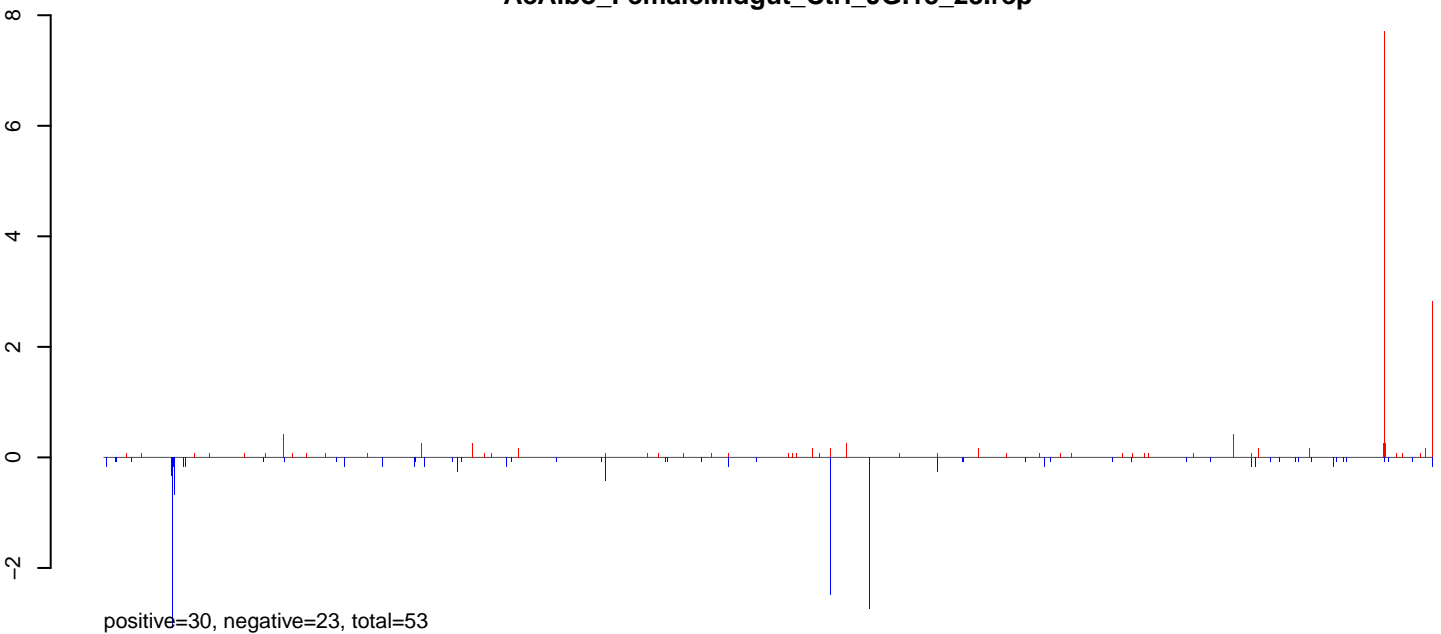


positive=59, negative=408, total=467

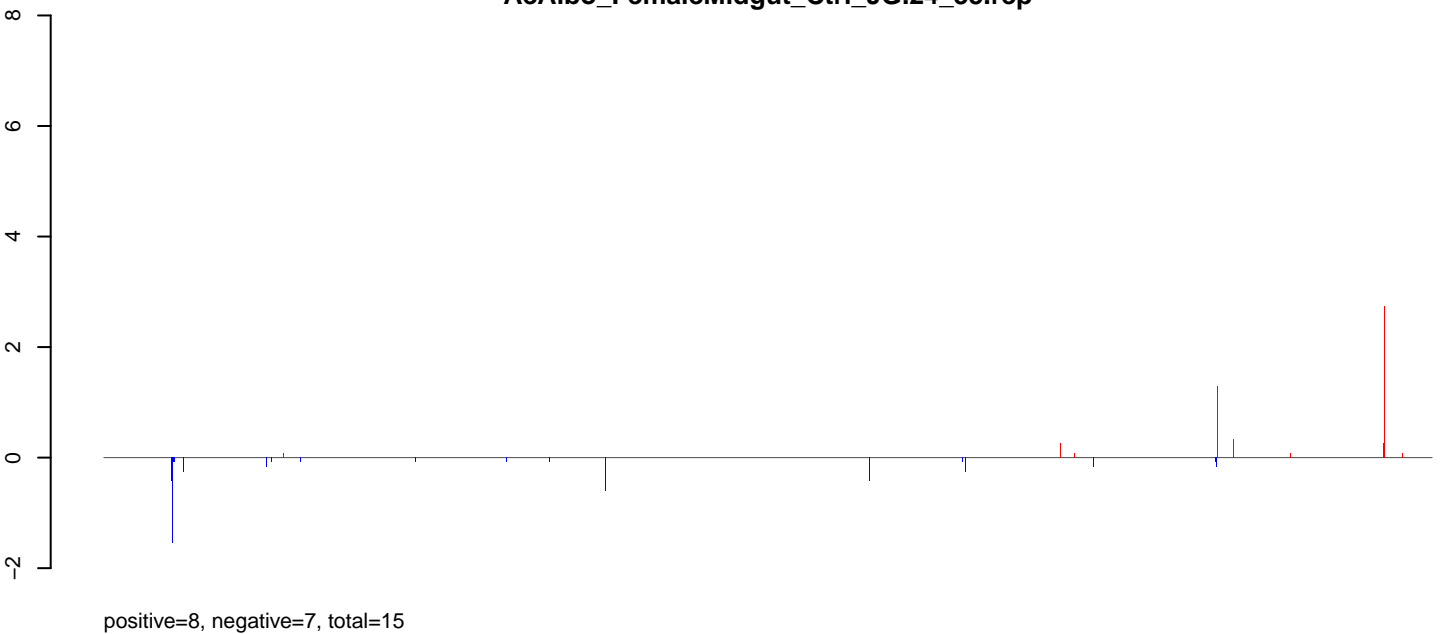
Window size=50, length=1320505, Wolbachia@Wolbachia_HN2016:1-1320505

0 200000 400000 600000 800000 1000000 1200000

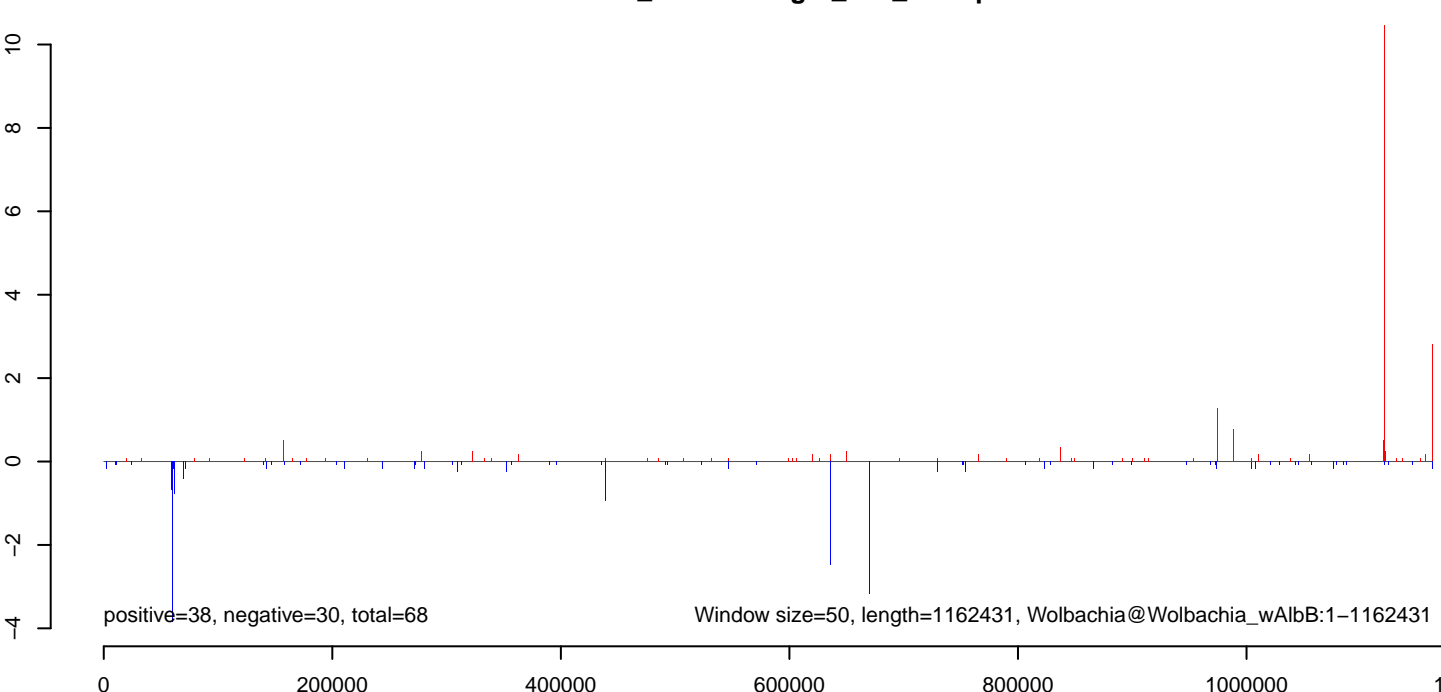
AeAlbo_FemaleMidgut_Ctrl_JG.18_23.rep



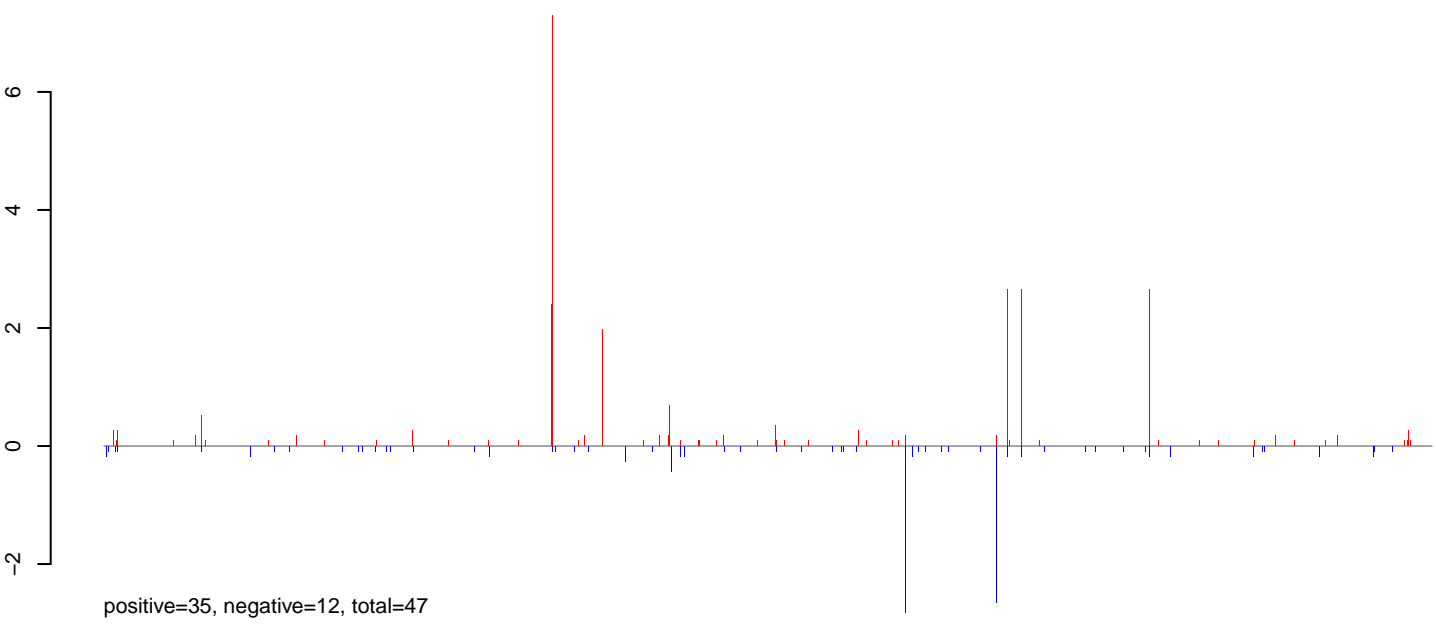
AeAlbo_FemaleMidgut_Ctrl_JG.24_35.rep



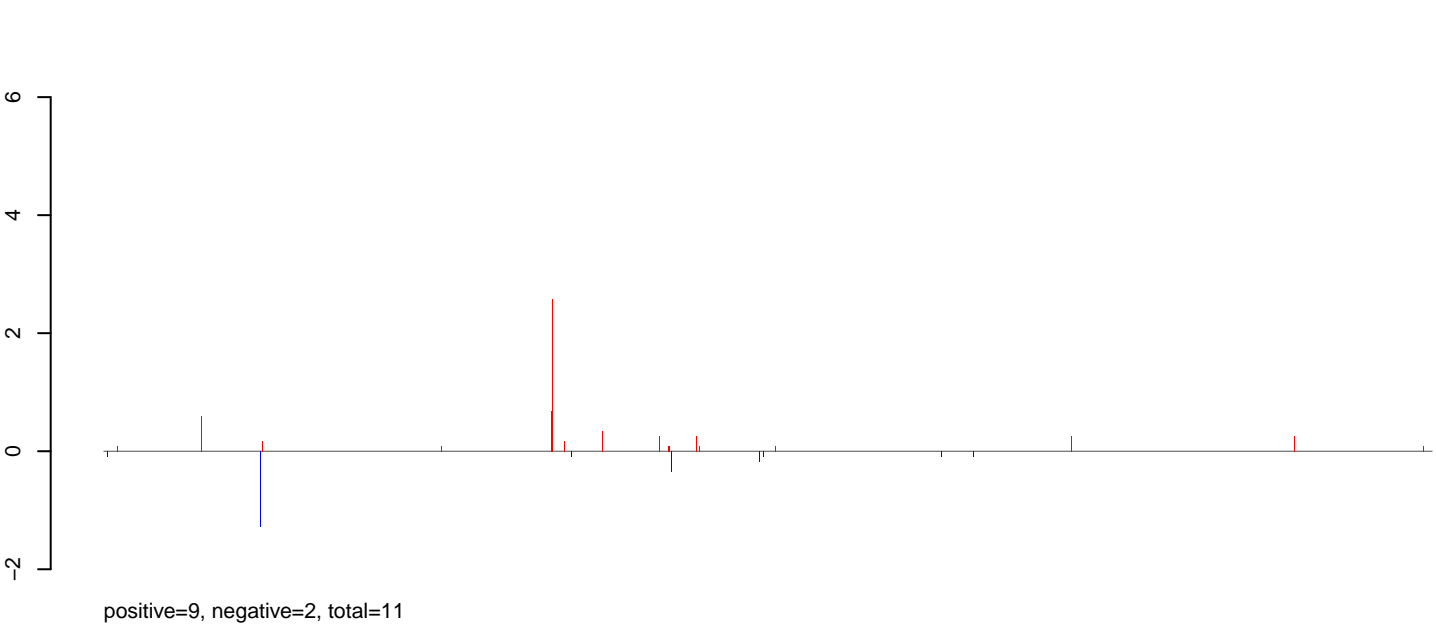
AeAlbo_FemaleMidgut_Ctrl_JG.rep



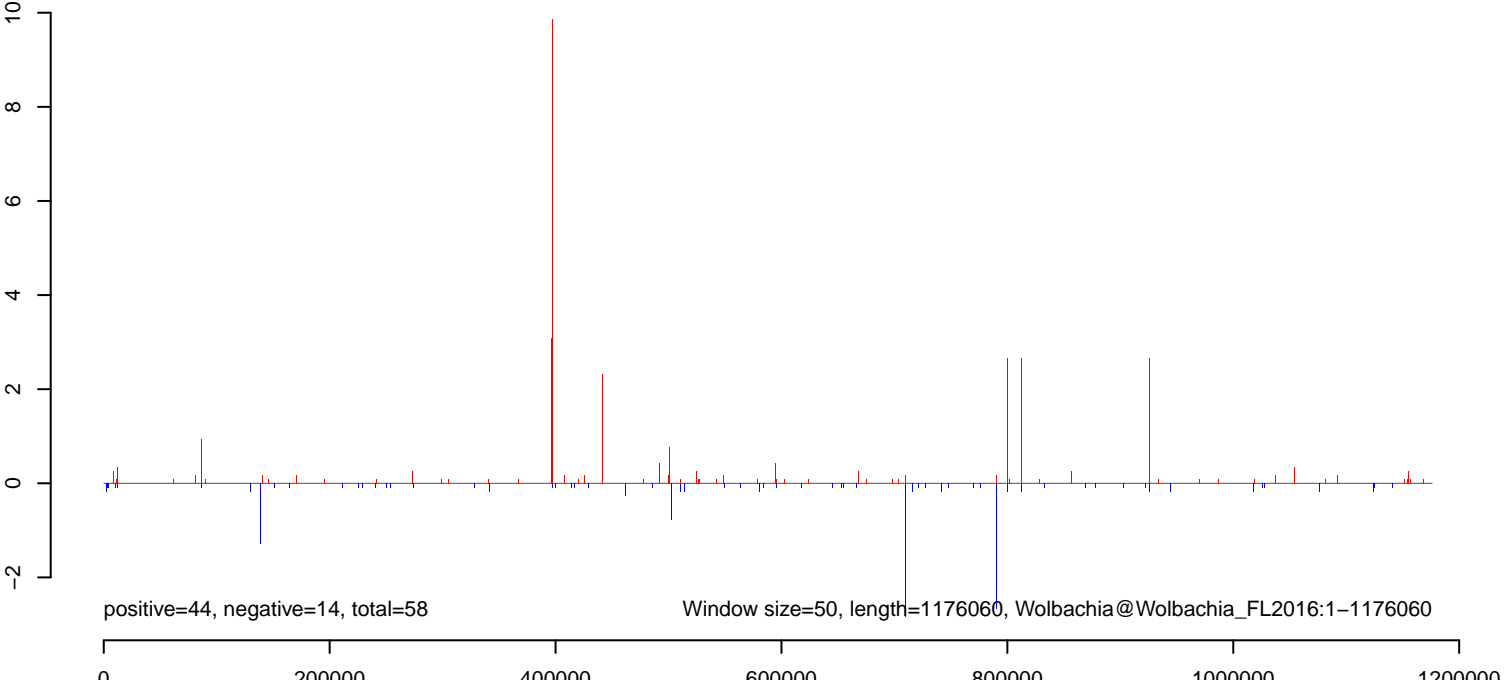
AeAlbo_FemaleMidgut_Ctrl_JG.18_23.rep



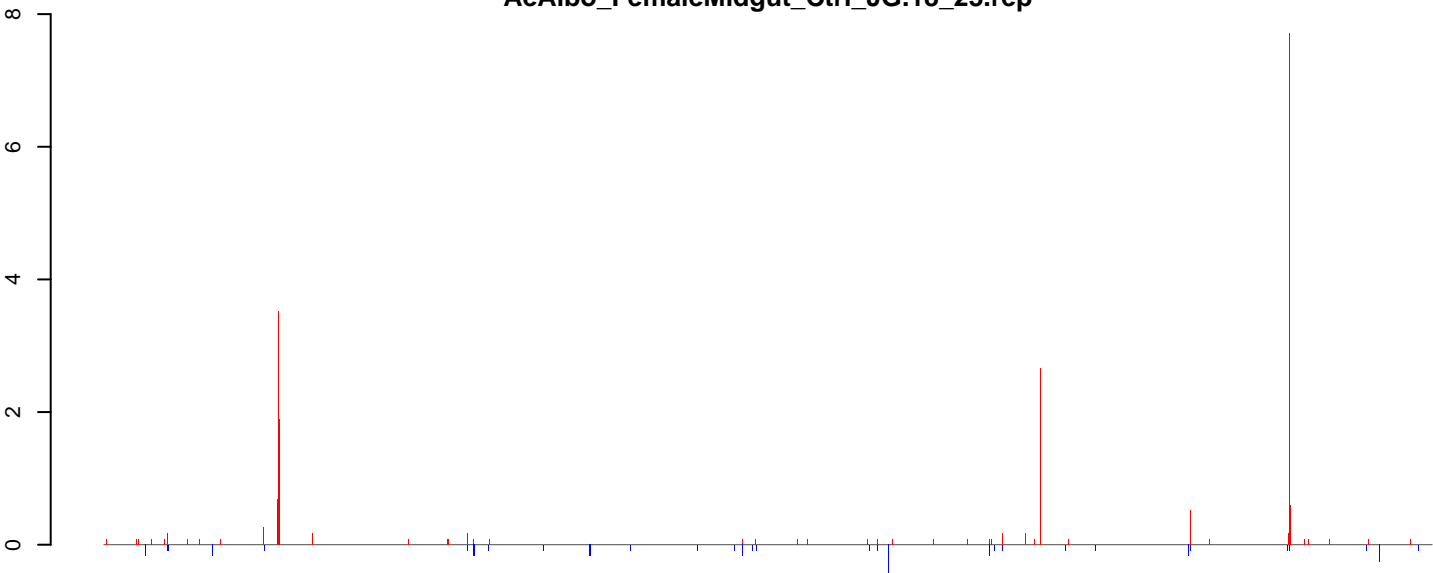
AeAlbo_FemaleMidgut_Ctrl_JG.24_35.rep



AeAlbo_FemaleMidgut_Ctrl_JG.rep

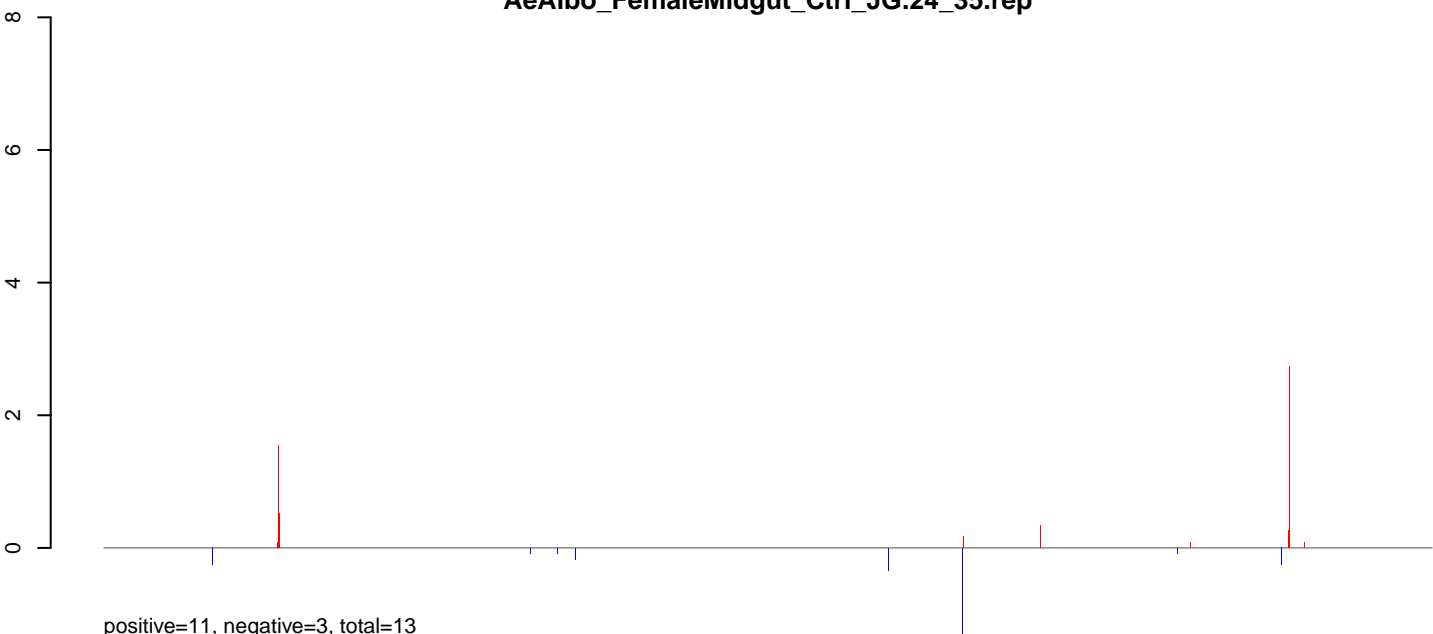


AeAlbo_FemaleMidgut_Ctrl_JG.18_23.rep



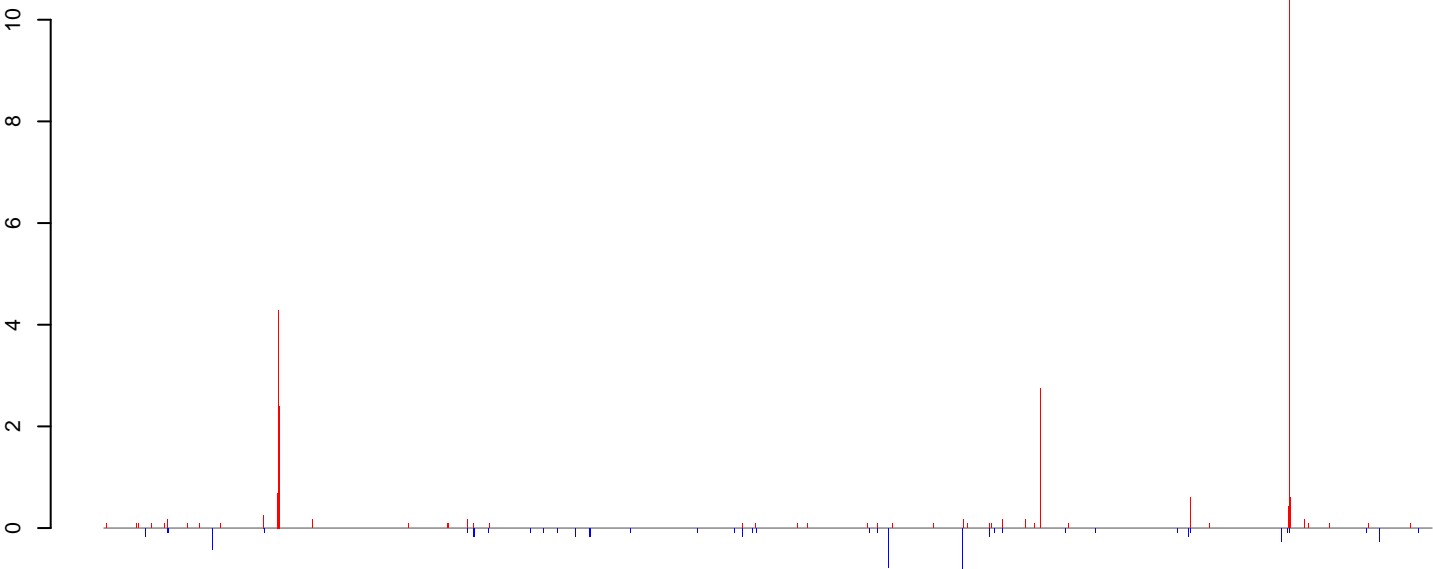
positive=37, negative=4, total=41

AeAlbo_FemaleMidgut_Ctrl_JG.24_35.rep



positive=11, negative=3, total=13

AeAlbo_FemaleMidgut_Ctrl_JG.rep

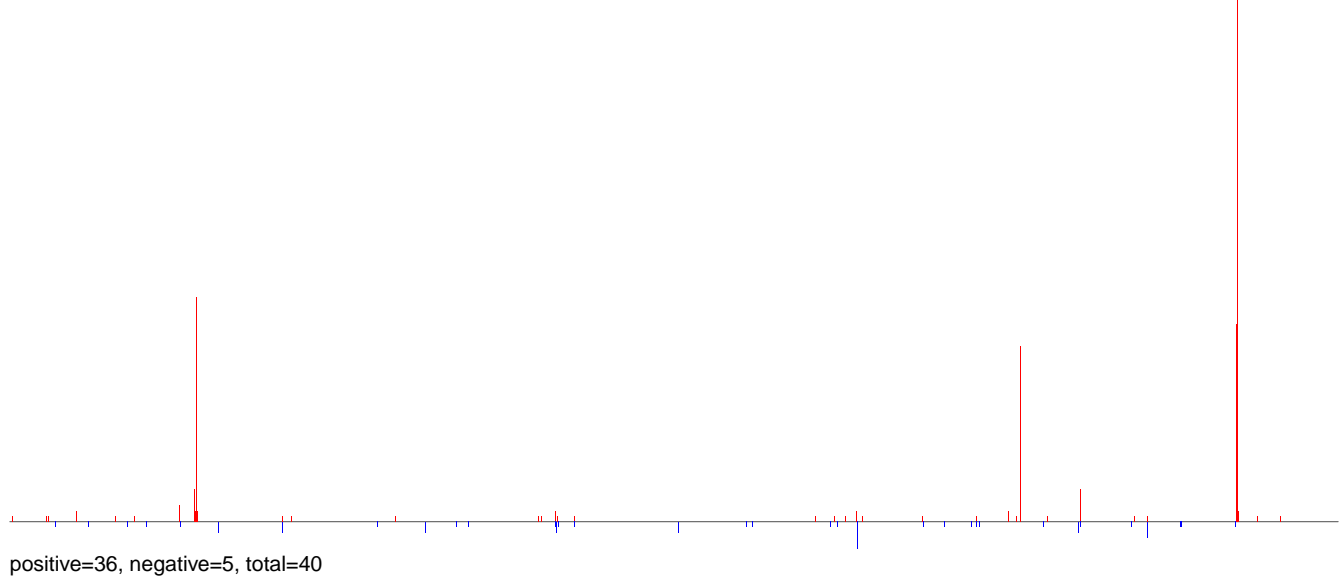


positive=48, negative=7, total=55

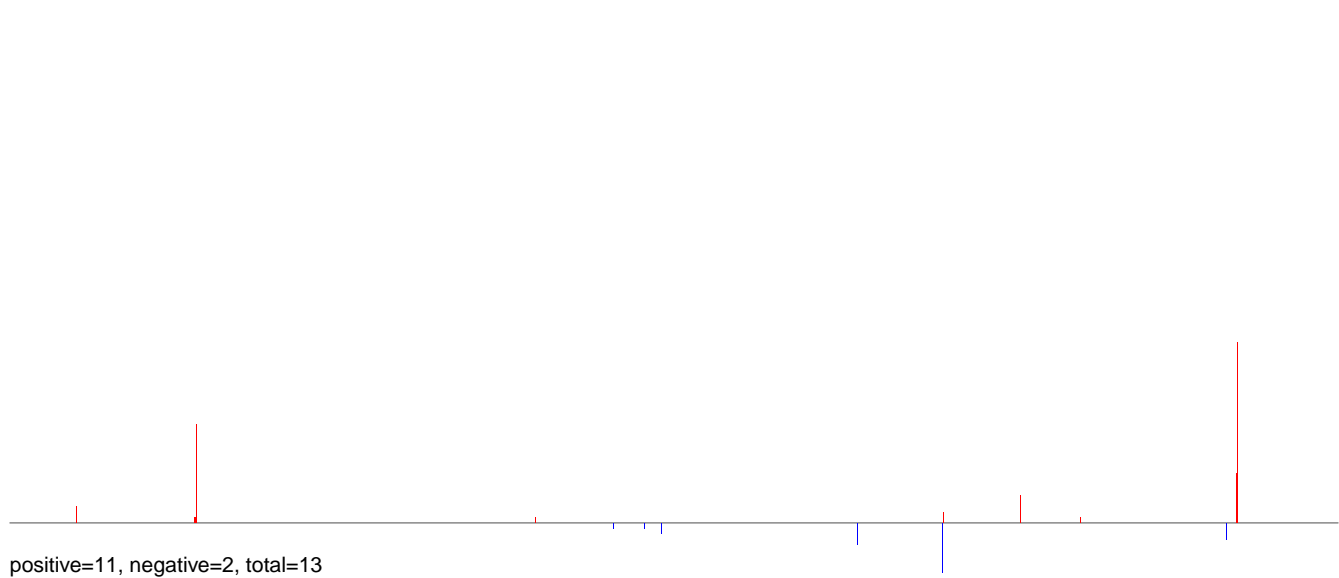
Window size=50, length=1445873, Wolbachia@Wolbachia_wRi:1-1445873

0 500000 1000000 1500000

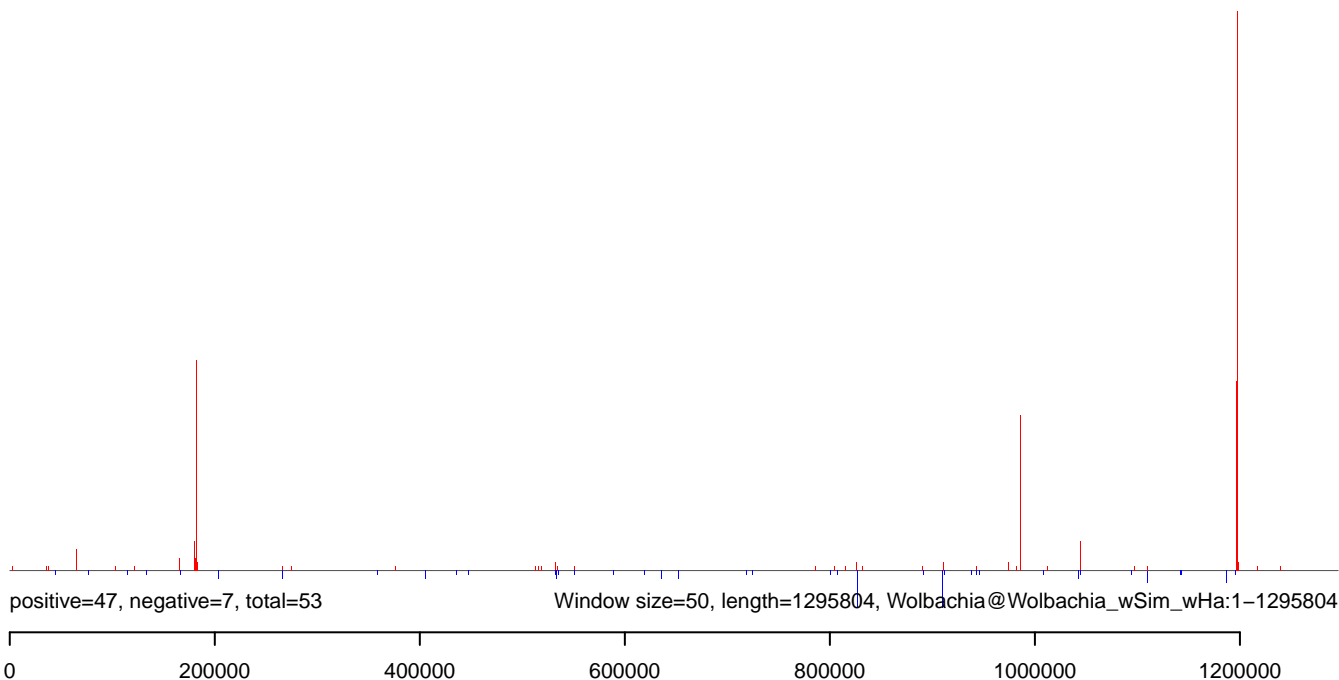
AeAlbo_FemaleMidgut_Ctrl_JG.18_23.rep



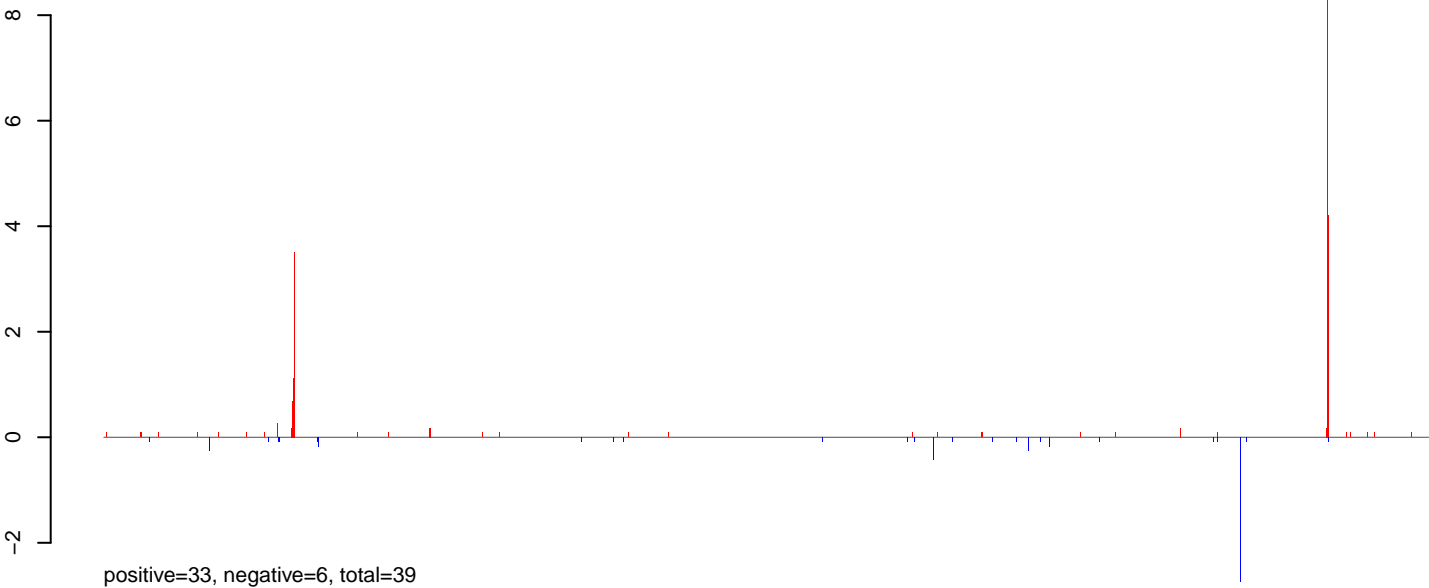
AeAlbo_FemaleMidgut_Ctrl_JG.24_35.rep



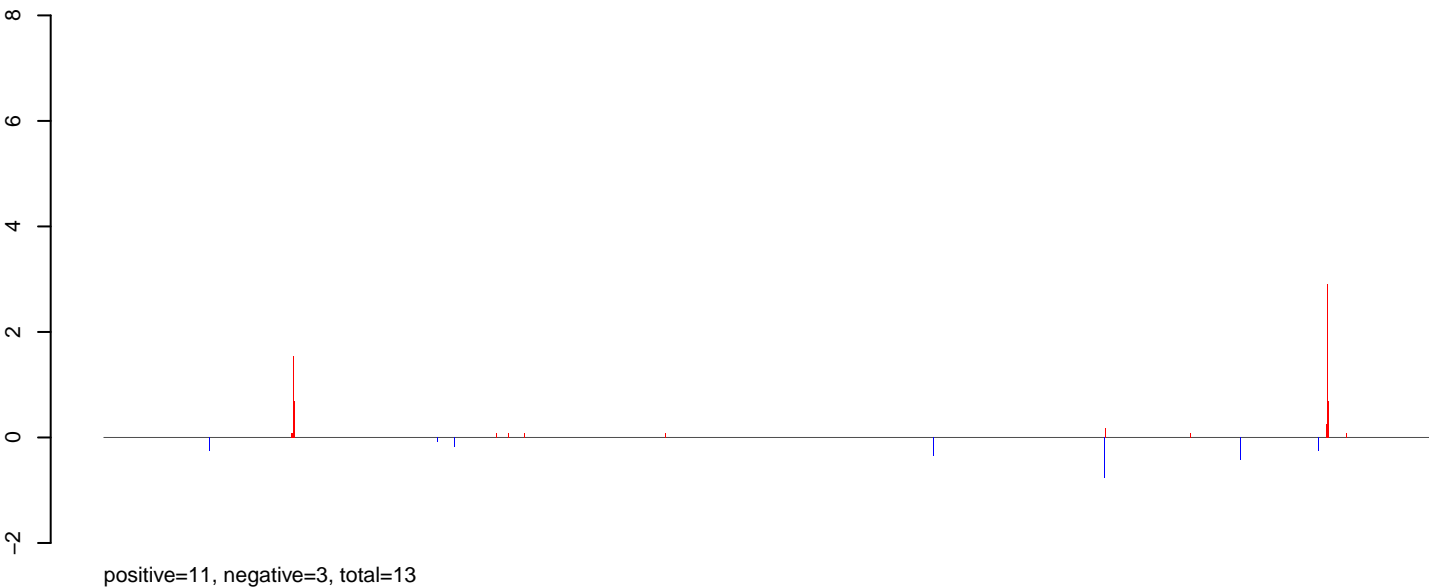
AeAlbo_FemaleMidgut_Ctrl_JG.rep



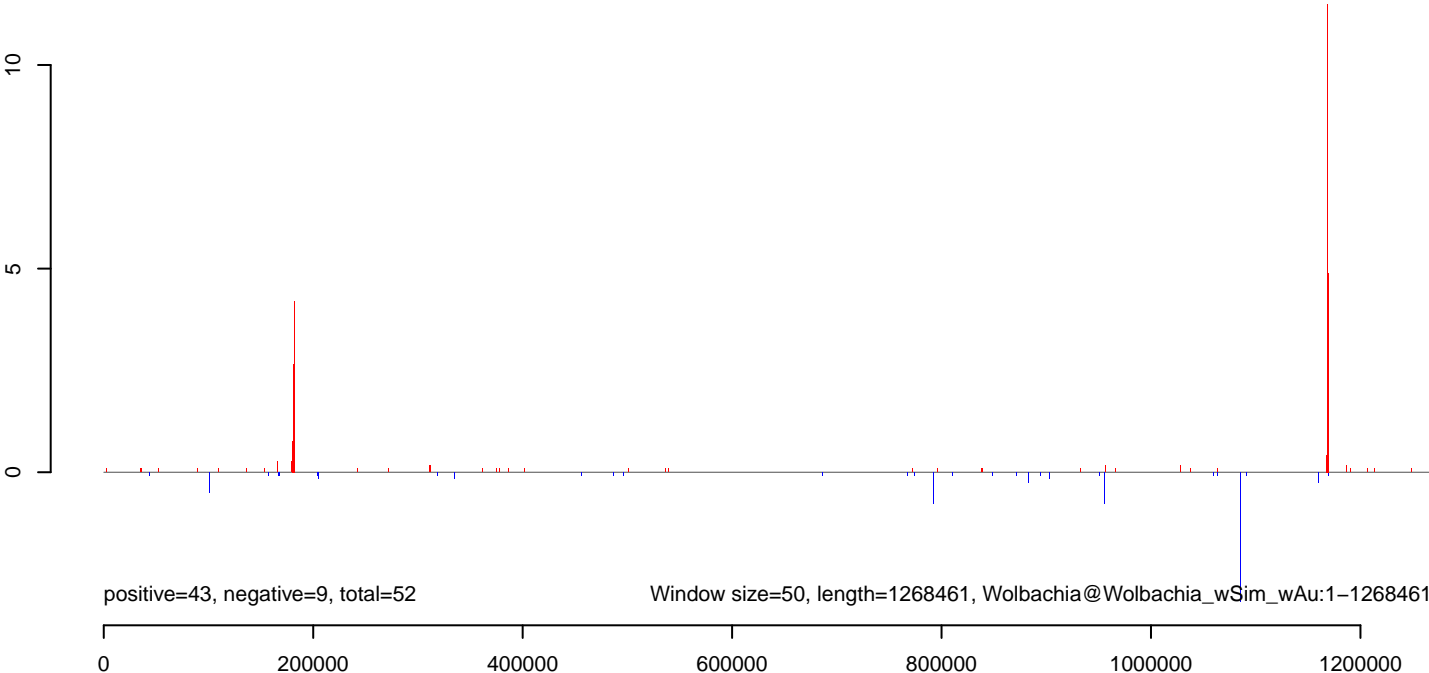
AeAlbo_FemaleMidgut_Ctrl_JG.18_23.rep



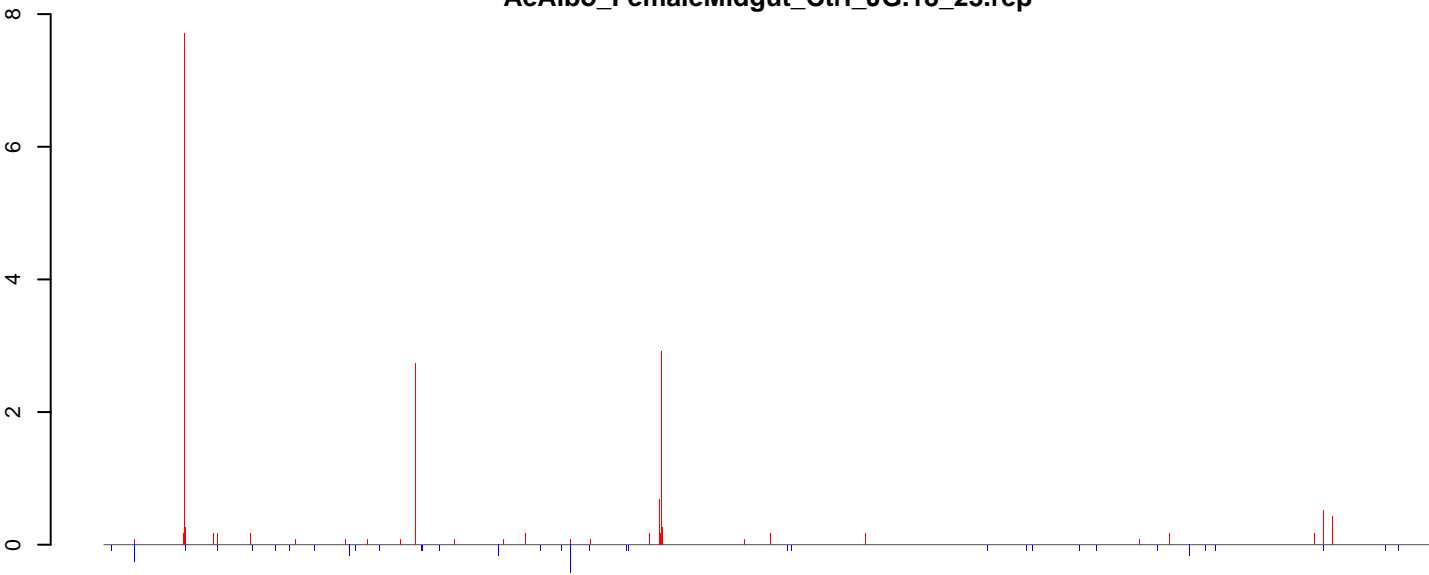
AeAlbo_FemaleMidgut_Ctrl_JG.24_35.rep



AeAlbo_FemaleMidgut_Ctrl_JG.rep

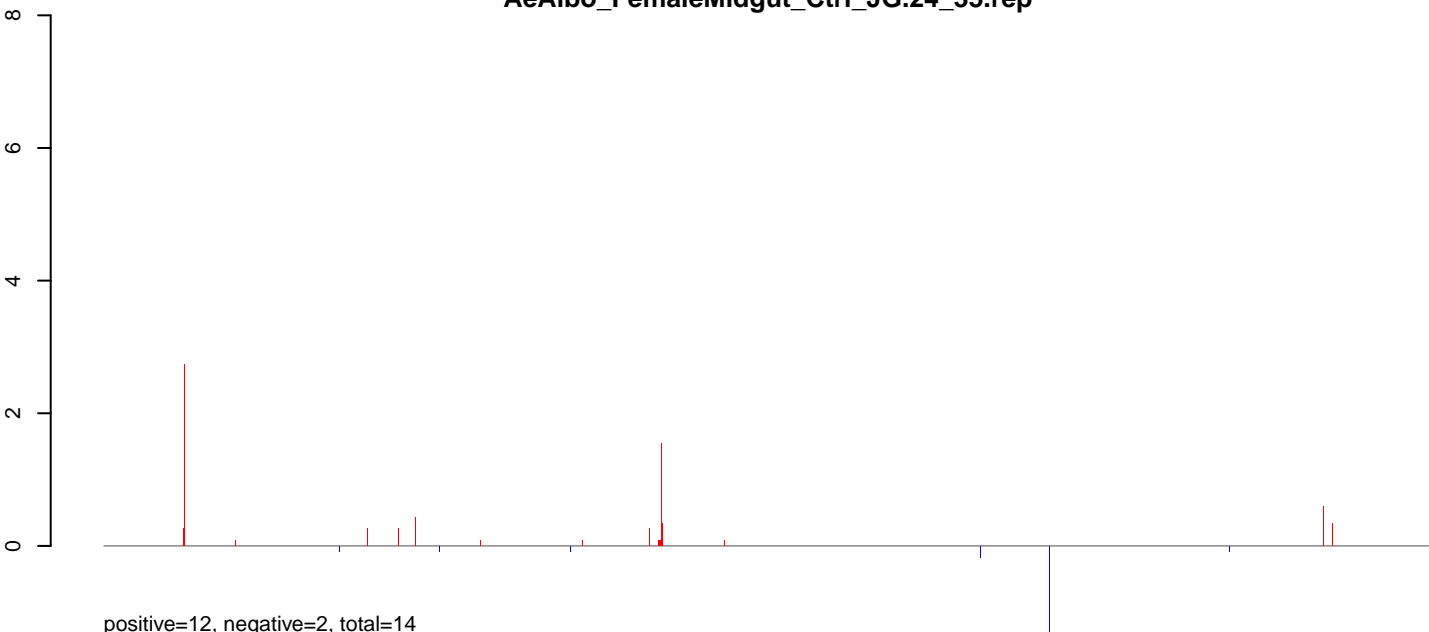


AeAlbo_FemaleMidgut_Ctrl_JG.18_23.rep



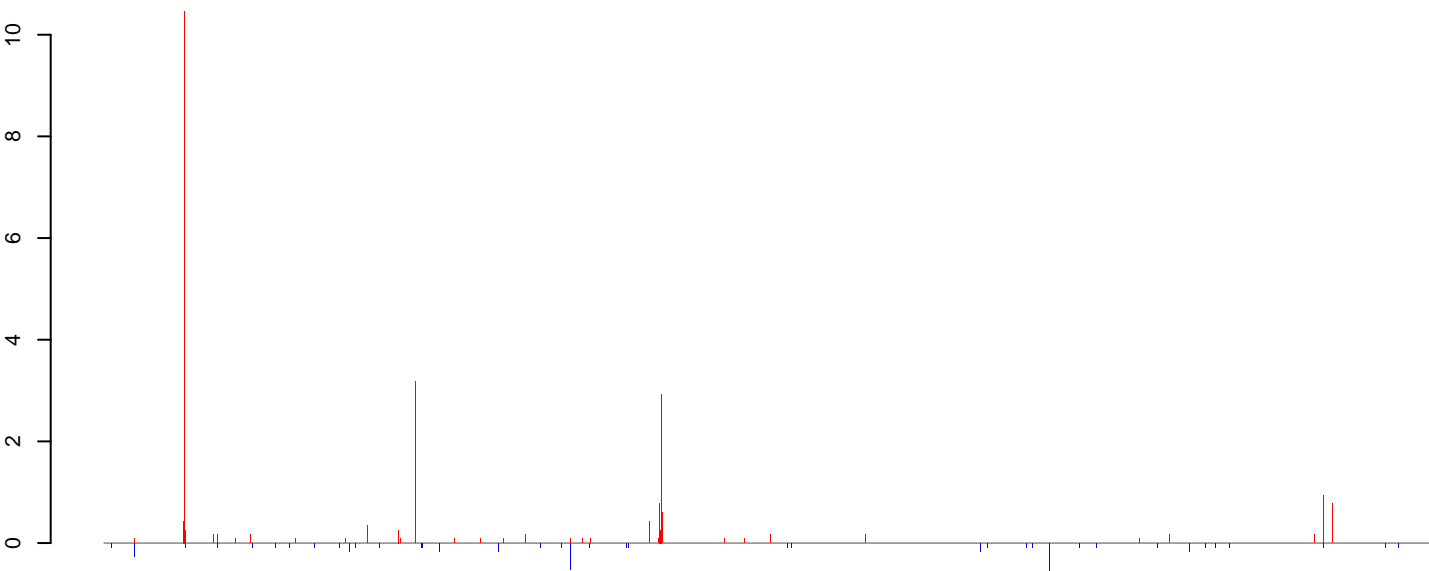
positive=32, negative=4, total=36

AeAlbo_FemaleMidgut_Ctrl_JG.24_35.rep



positive=12, negative=2, total=14

AeAlbo_FemaleMidgut_Ctrl_JG.rep

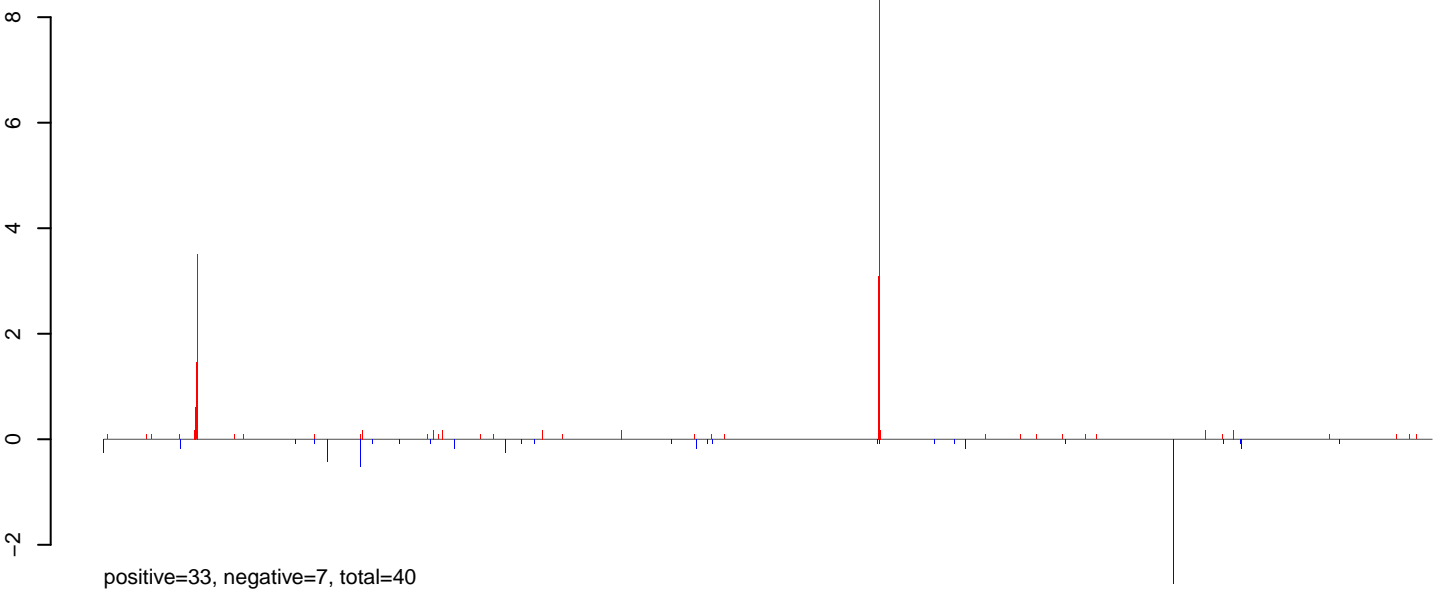


positive=44, negative=6, total=50

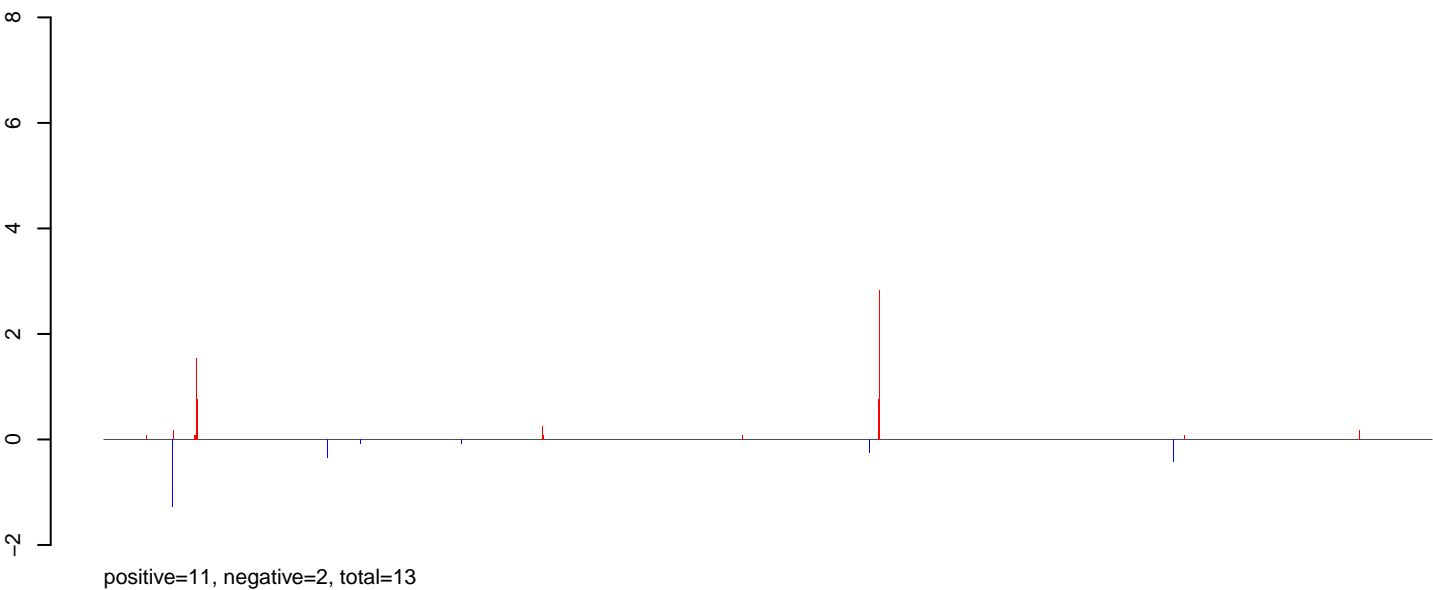
Window size=50, length=1158805, Wolbachia@Wolbachia_wAus:1-1158805

0 200000 400000 600000 800000 1000000 1200000

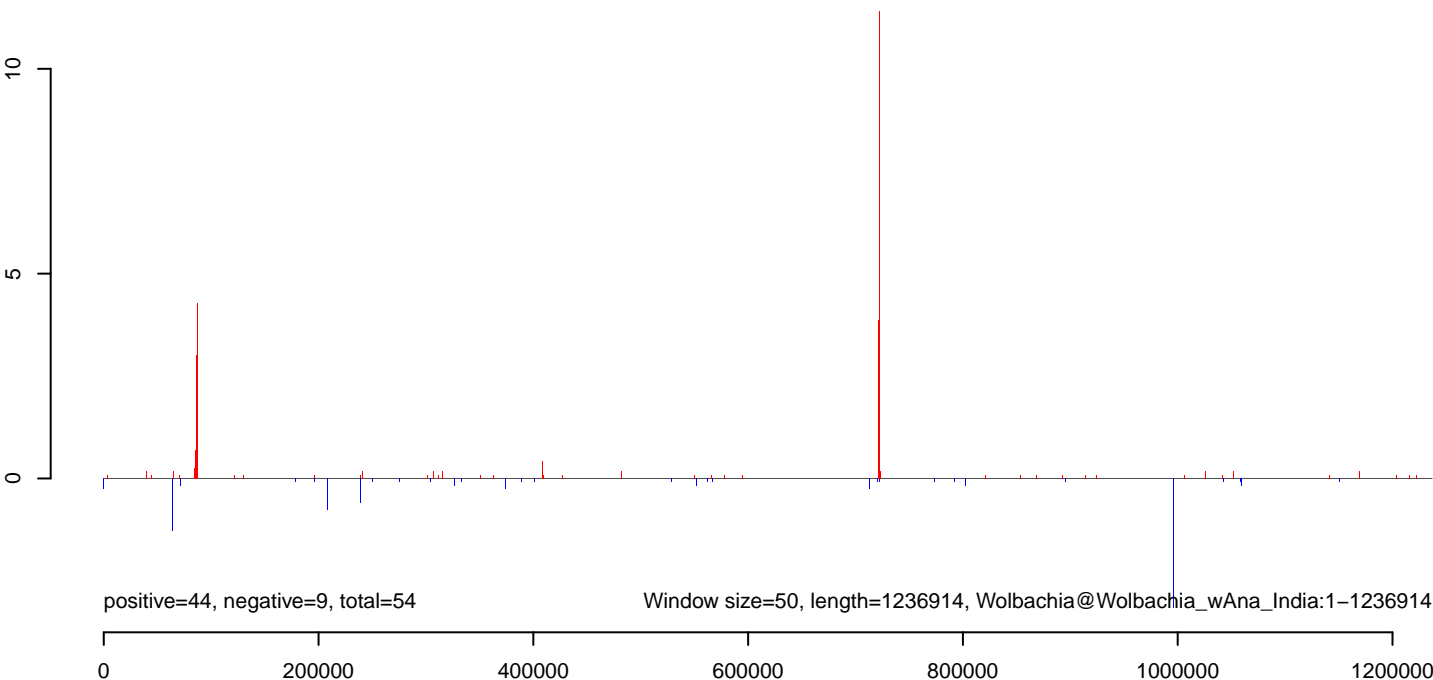
AeAlbo_FemaleMidgut_Ctrl_JG.18_23.rep



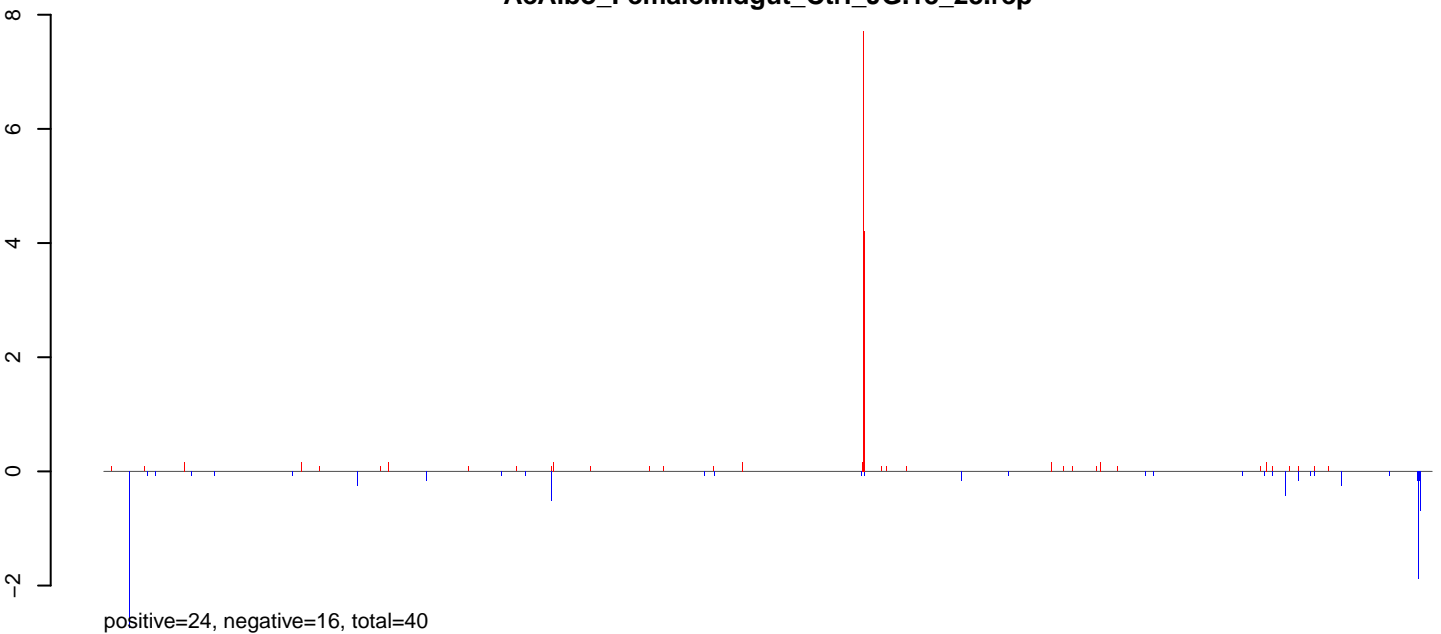
AeAlbo_FemaleMidgut_Ctrl_JG.24_35.rep



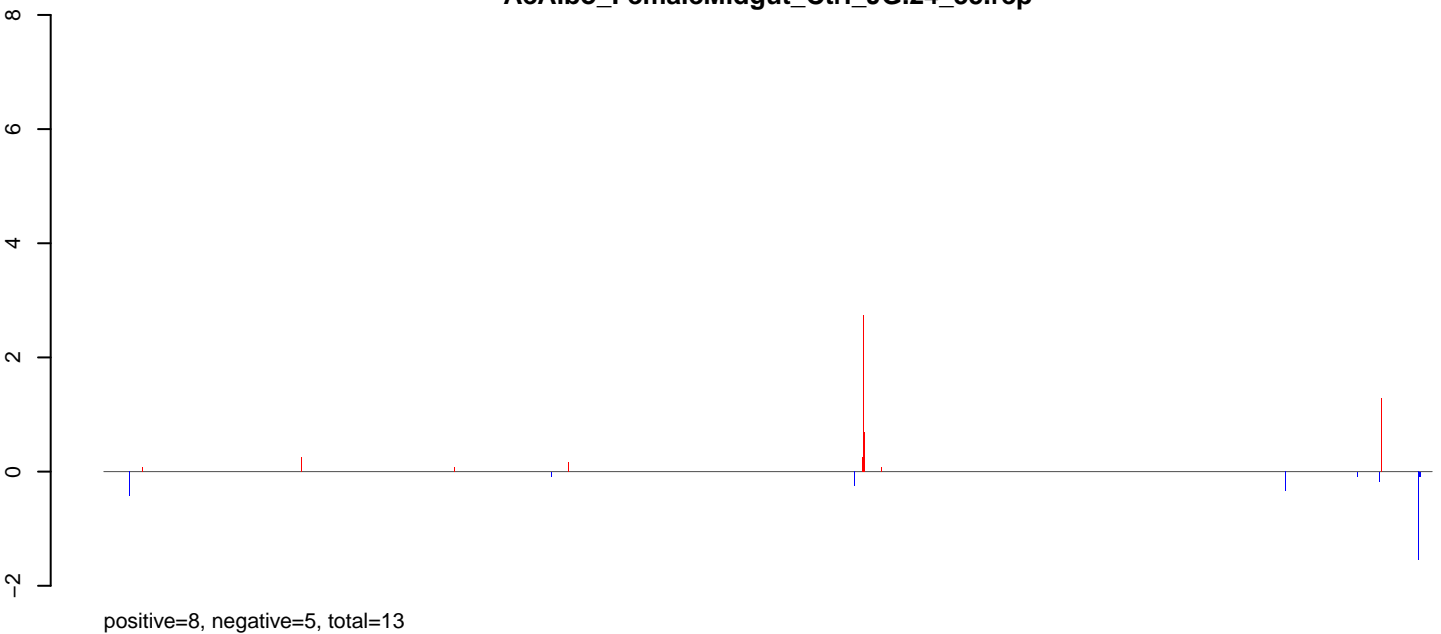
AeAlbo_FemaleMidgut_Ctrl_JG.rep



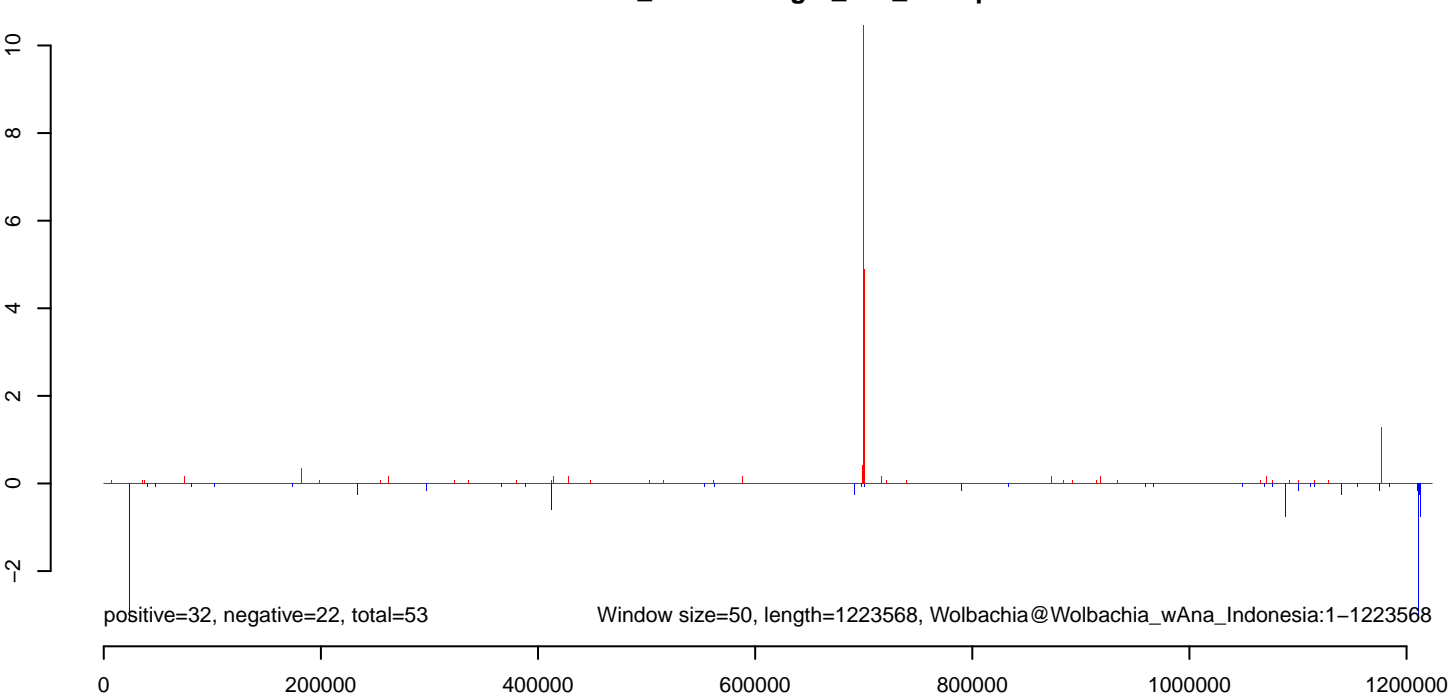
AeAlbo_FemaleMidgut_Ctrl_JG.18_23.rep



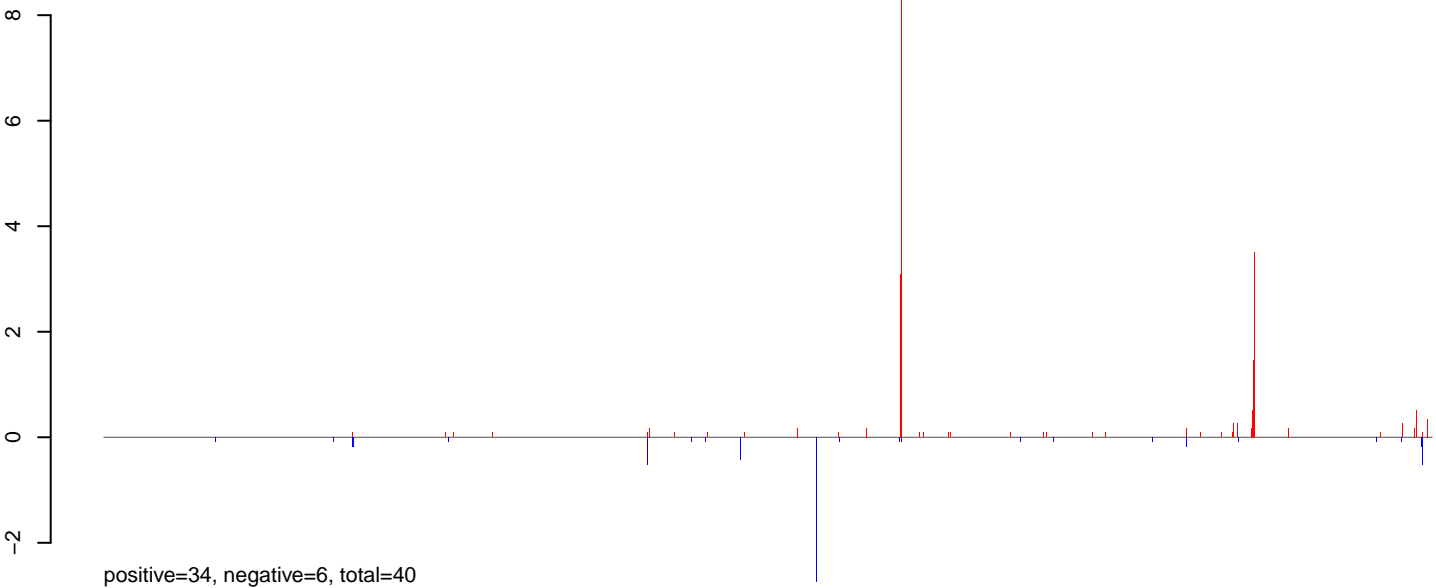
AeAlbo_FemaleMidgut_Ctrl_JG.24_35.rep



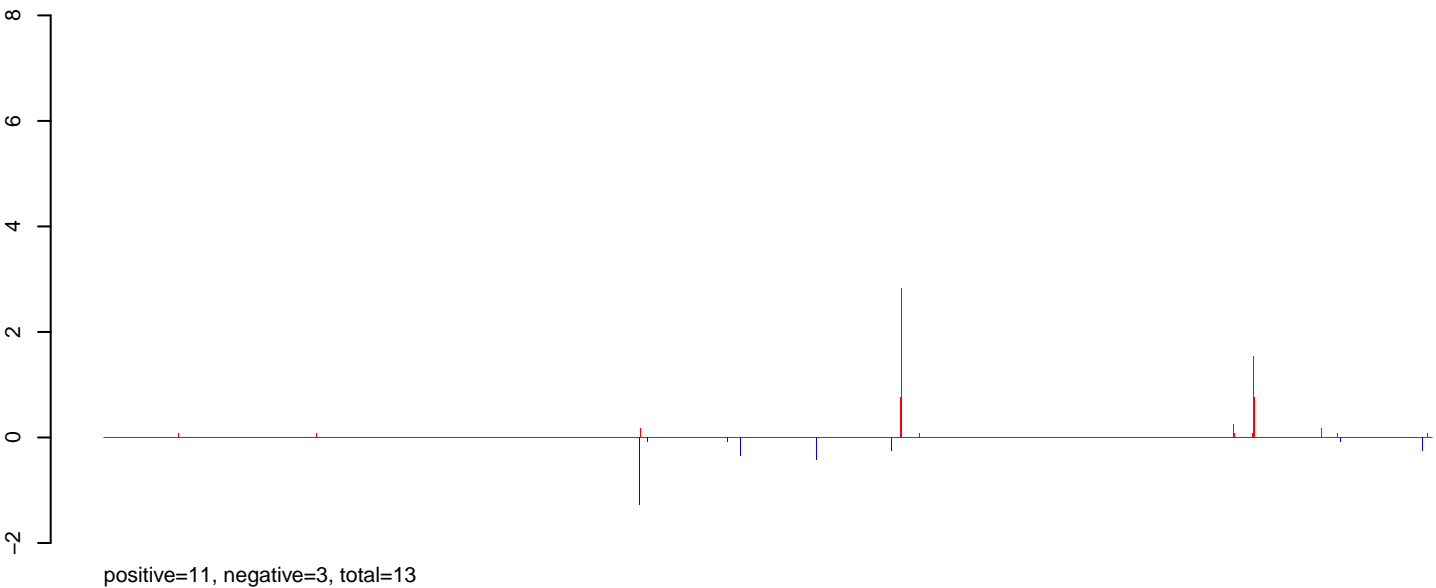
AeAlbo_FemaleMidgut_Ctrl_JG.rep



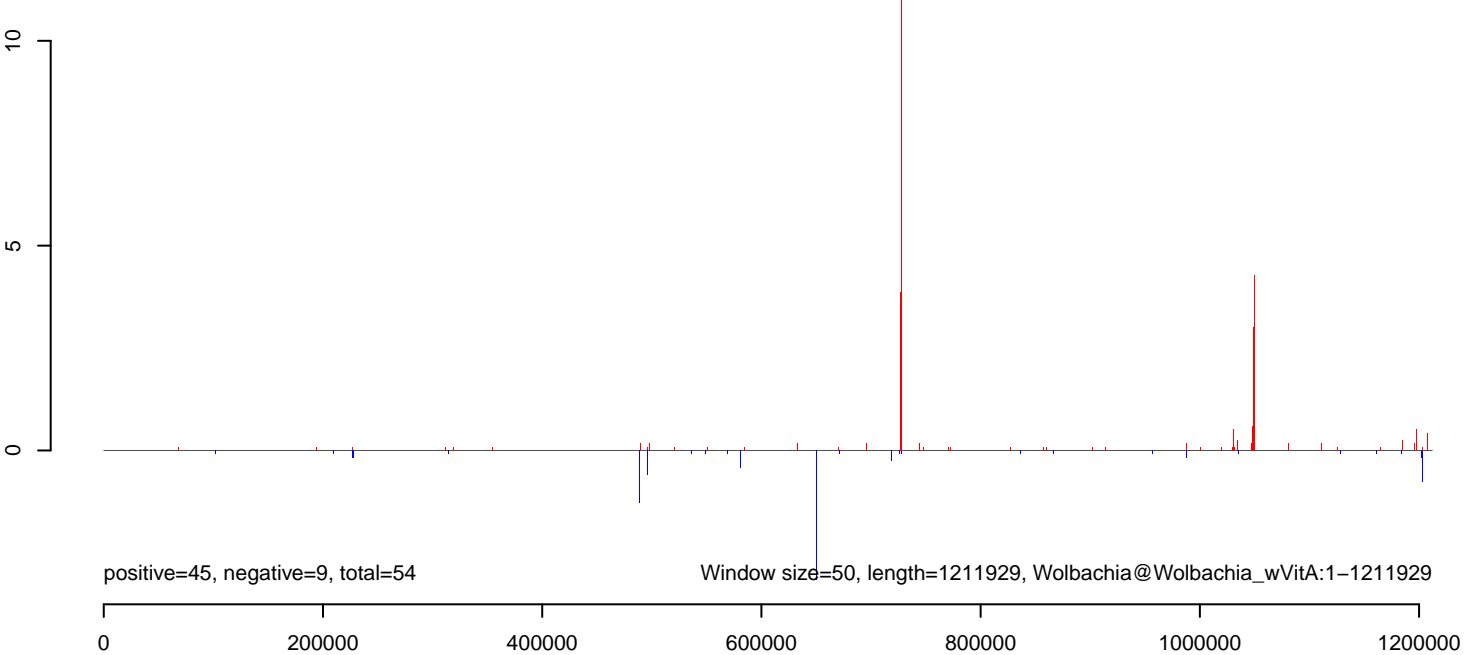
AeAlbo_FemaleMidgut_Ctrl_JG.18_23.rep



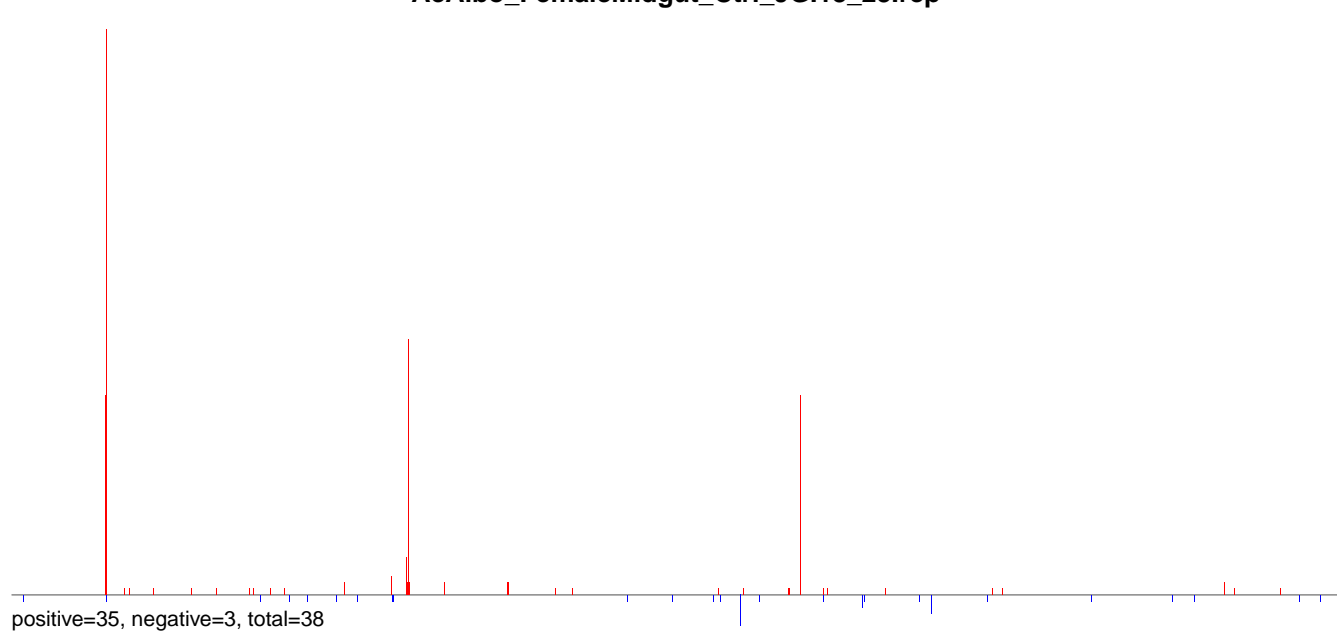
AeAlbo_FemaleMidgut_Ctrl_JG.24_35.rep



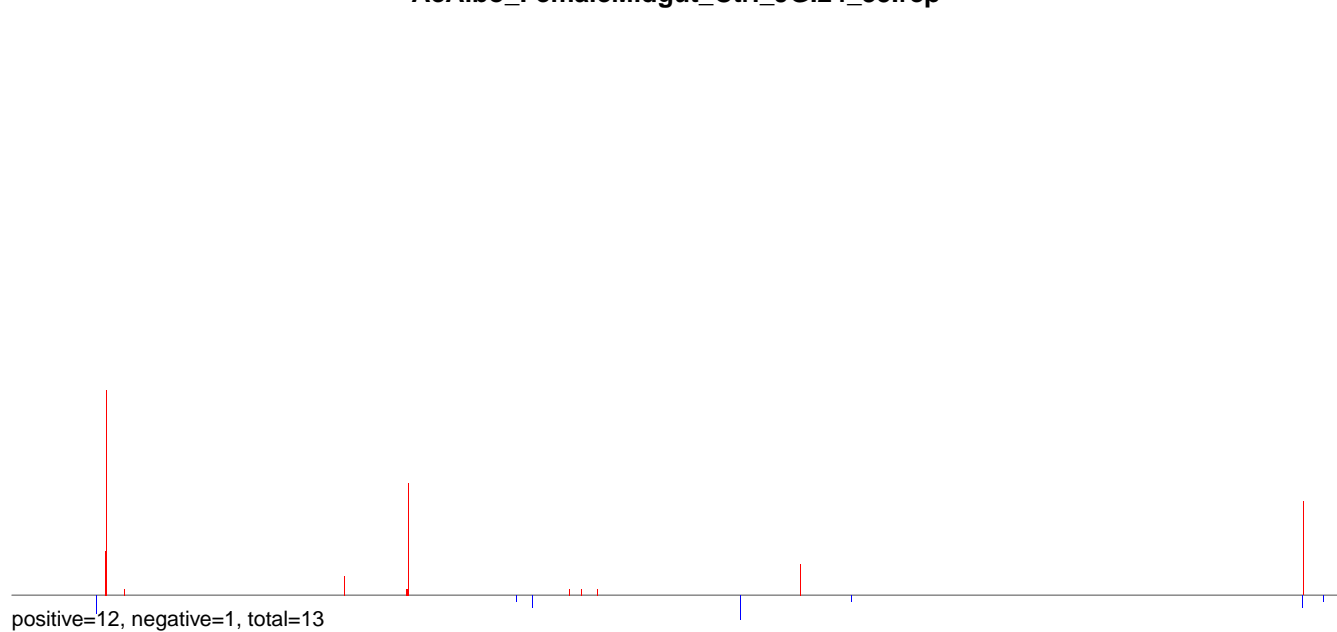
AeAlbo_FemaleMidgut_Ctrl_JG.rep



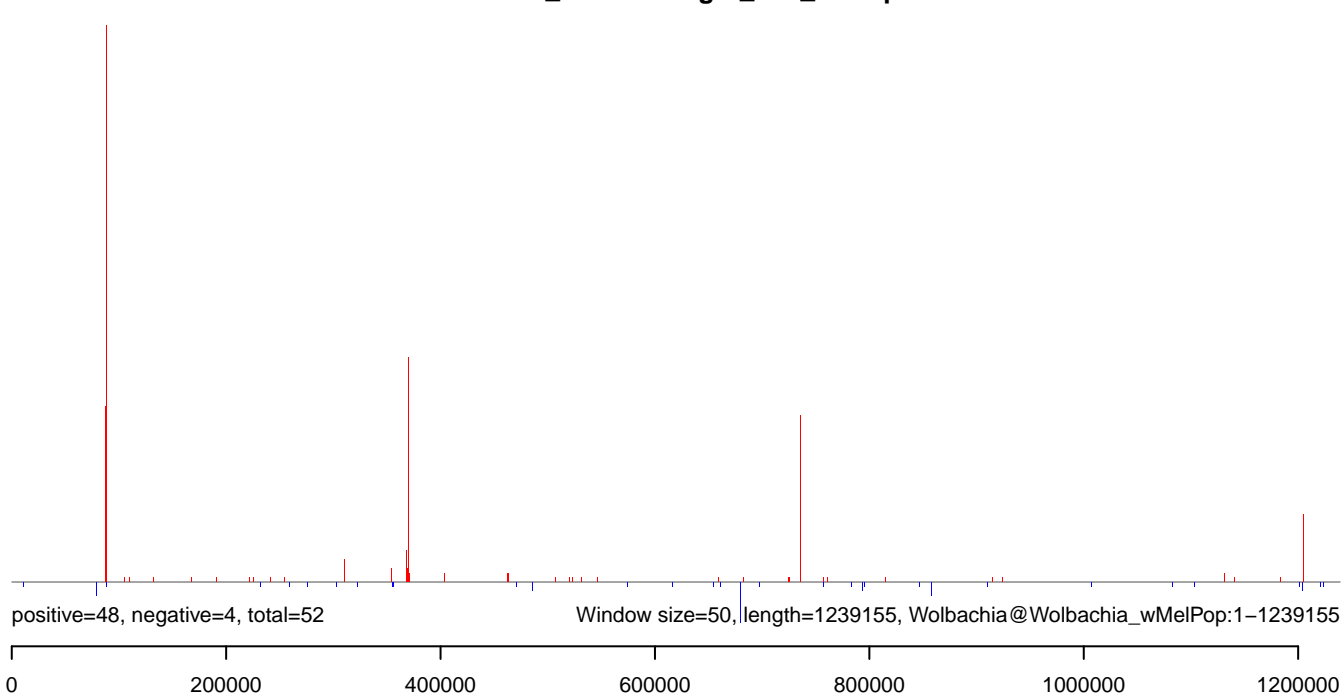
AeAlbo_FemaleMidgut_Ctrl_JG.18_23.rep



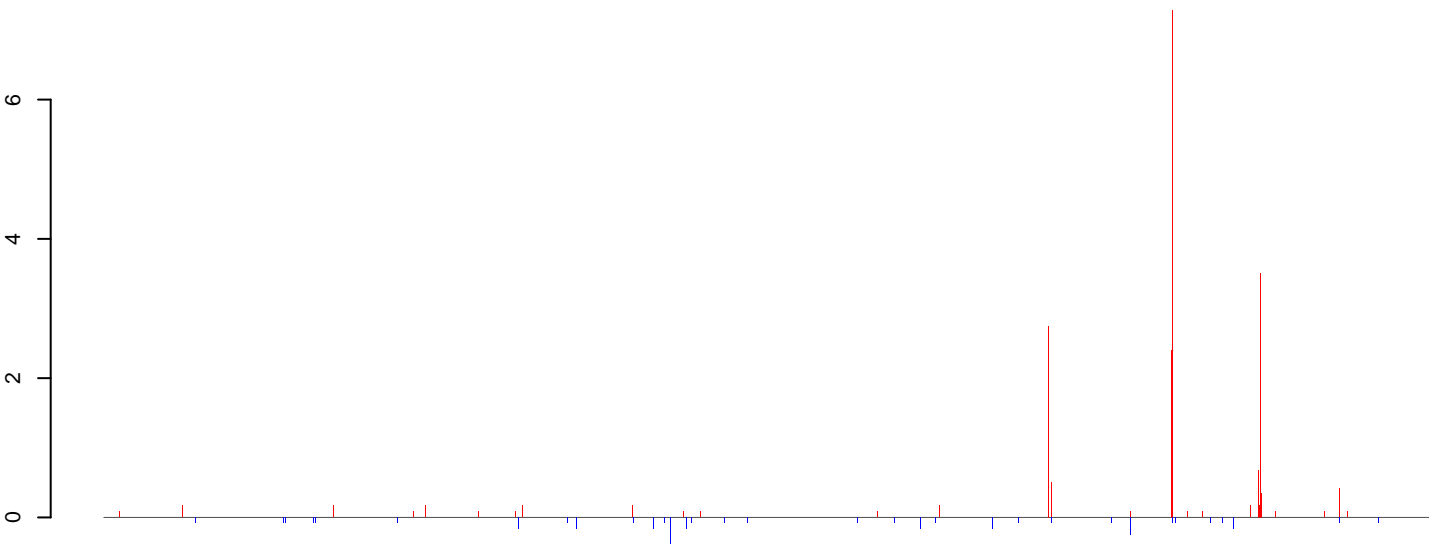
AeAlbo_FemaleMidgut_Ctrl_JG.24_35.rep



AeAlbo_FemaleMidgut_Ctrl_JG.rep



AeAlbo_FemaleMidgut_Ctrl_JG.18_23.rep



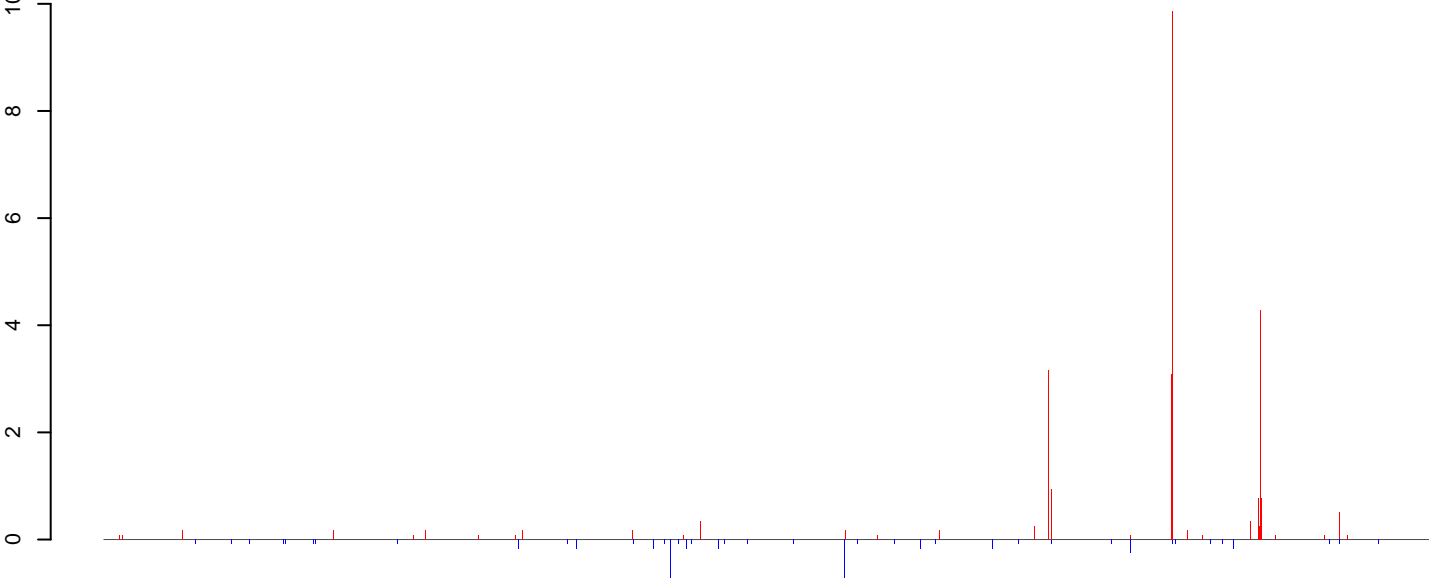
positive=31, negative=4, total=35

AeAlbo_FemaleMidgut_Ctrl_JG.24_35.rep



positive=12, negative=2, total=14

AeAlbo_FemaleMidgut_Ctrl_JG.rep

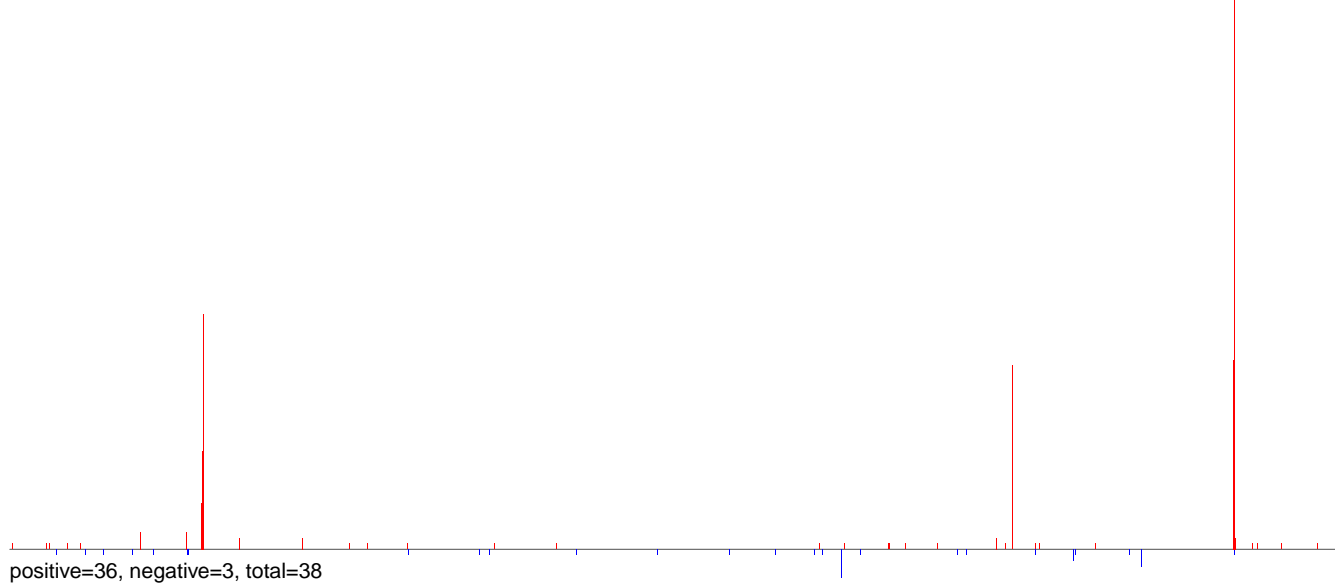


positive=43, negative=6, total=50

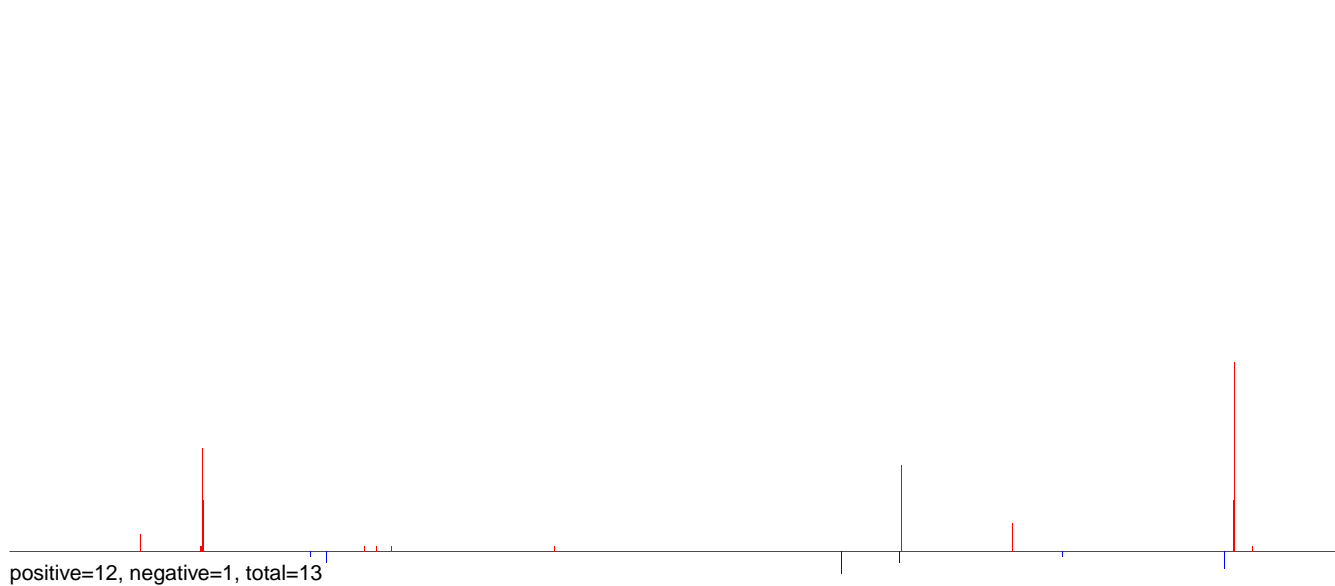
Window size=50, length=1377933, Wolbachia@Wolbachia_wBol1-b:1-1377933

0 200000 400000 600000 800000 1000000 1200000 1400000

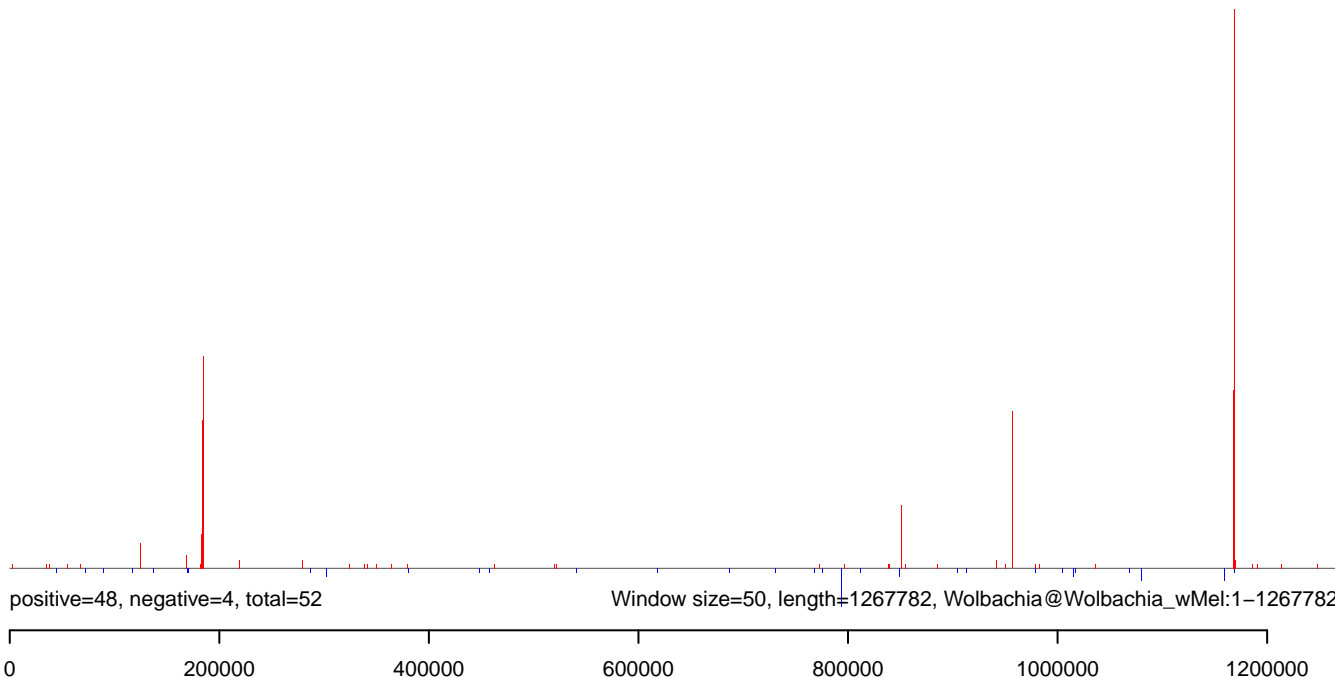
AeAlbo_FemaleMidgut_Ctrl_JG.18_23.rep



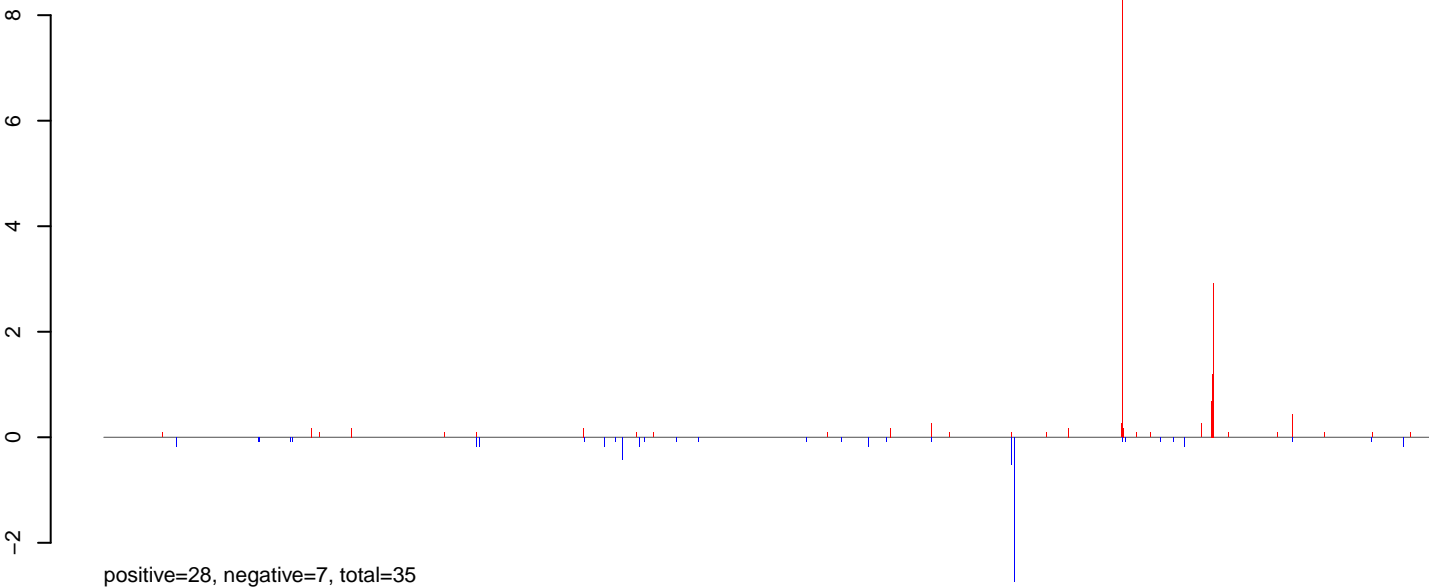
AeAlbo_FemaleMidgut_Ctrl_JG.24_35.rep



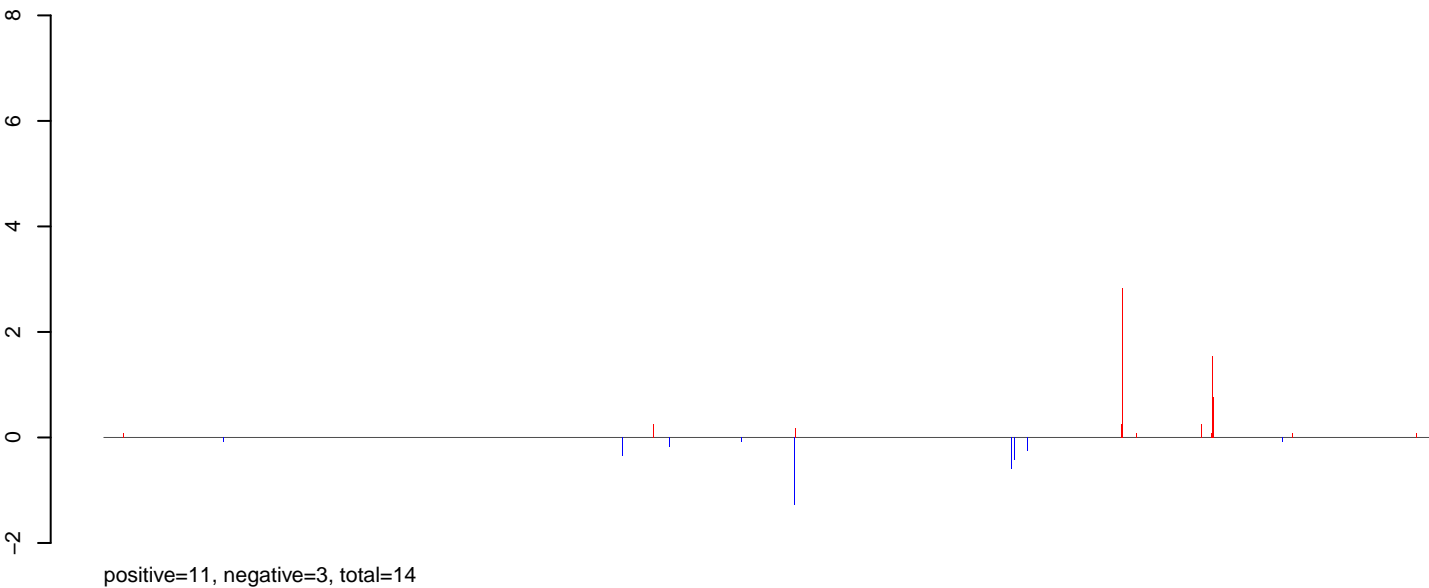
AeAlbo_FemaleMidgut_Ctrl_JG.rep



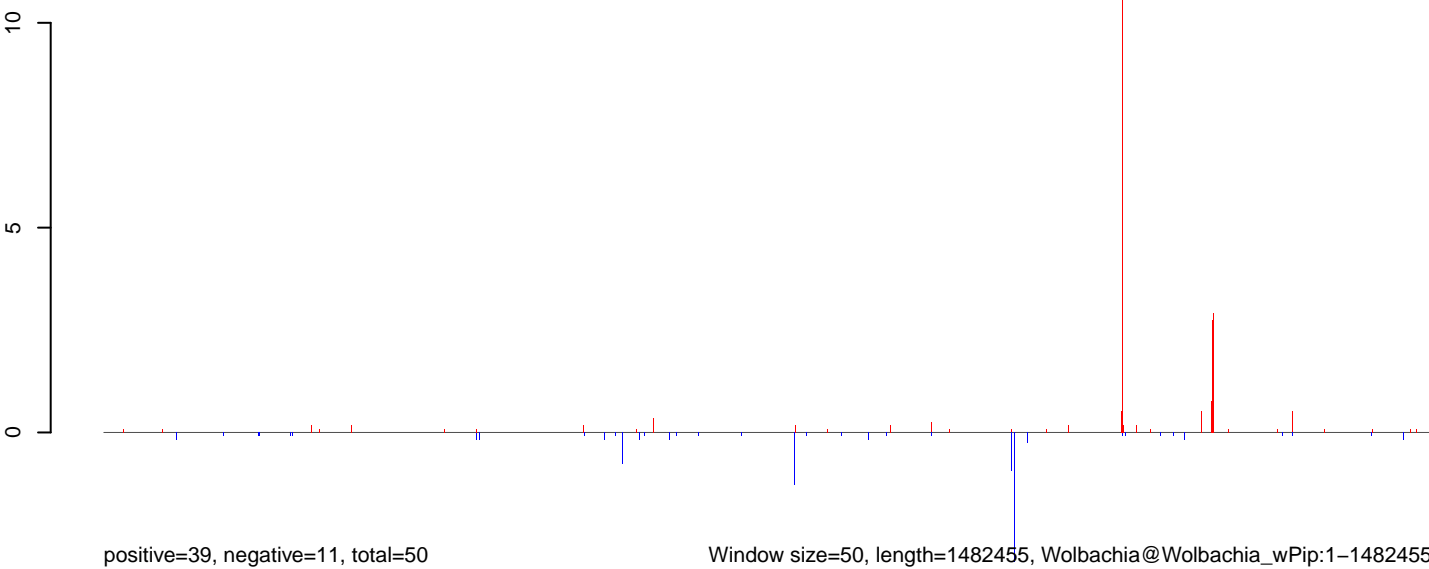
AeAlbo_FemaleMidgut_Ctrl_JG.18_23.rep



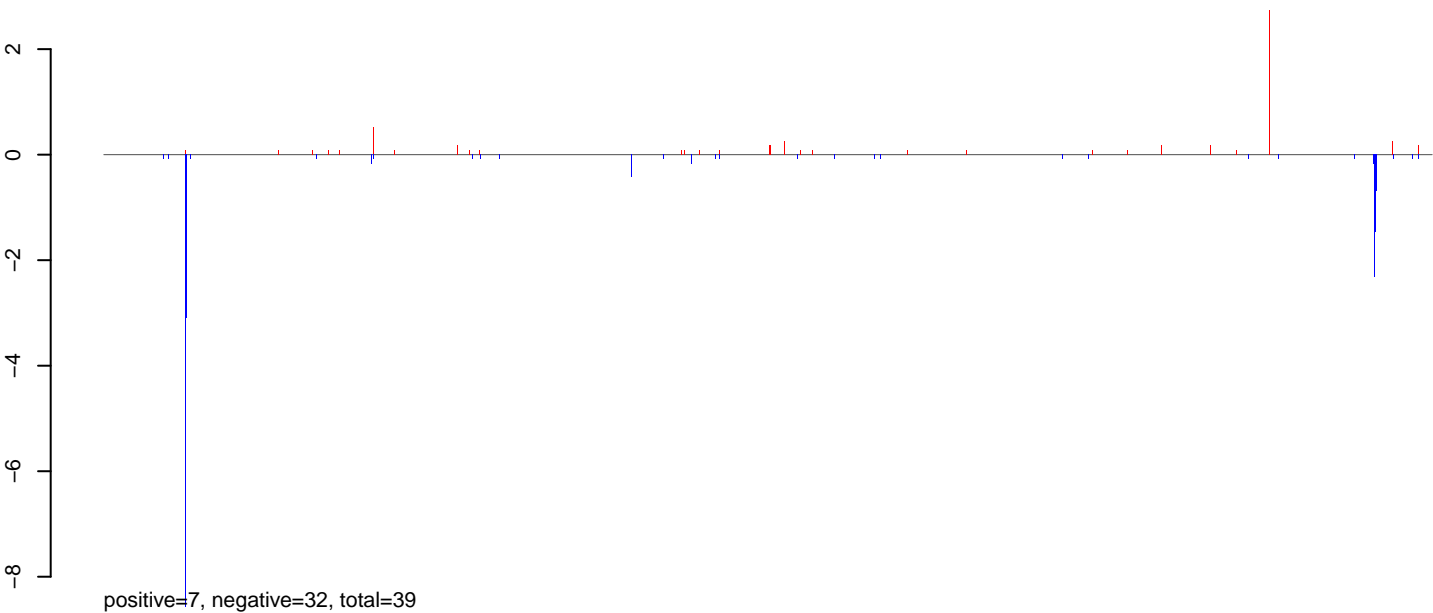
AeAlbo_FemaleMidgut_Ctrl_JG.24_35.rep



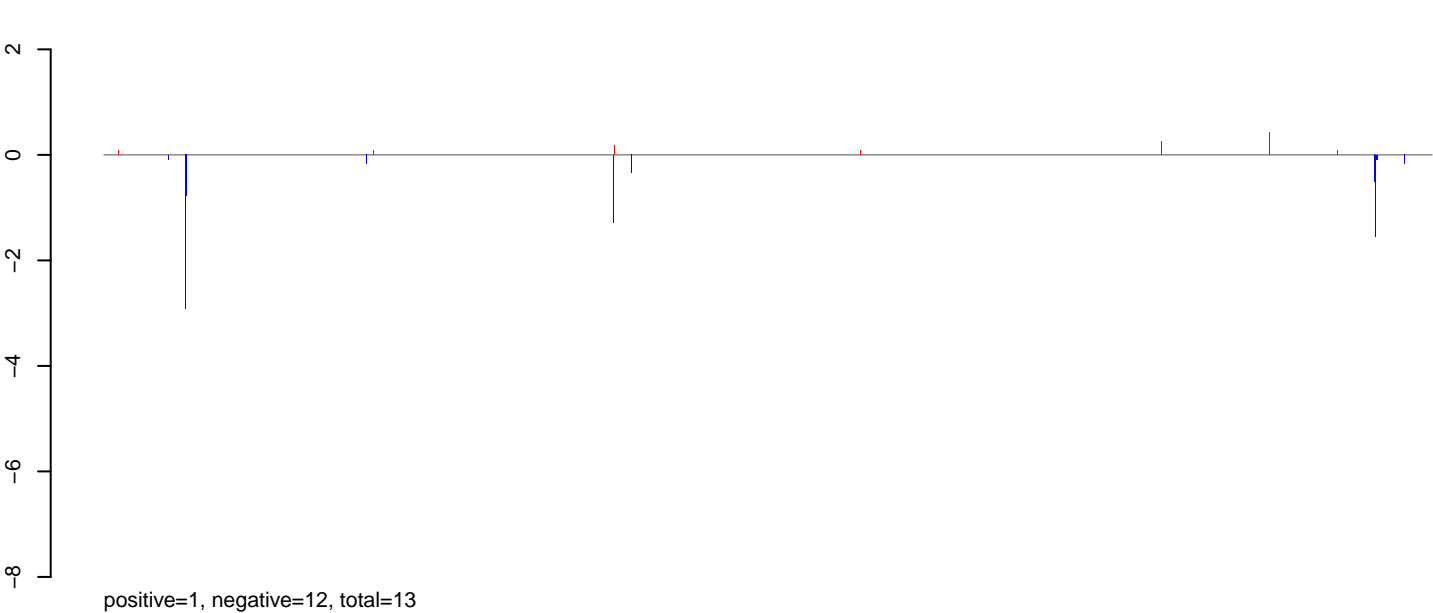
AeAlbo_FemaleMidgut_Ctrl_JG.rep



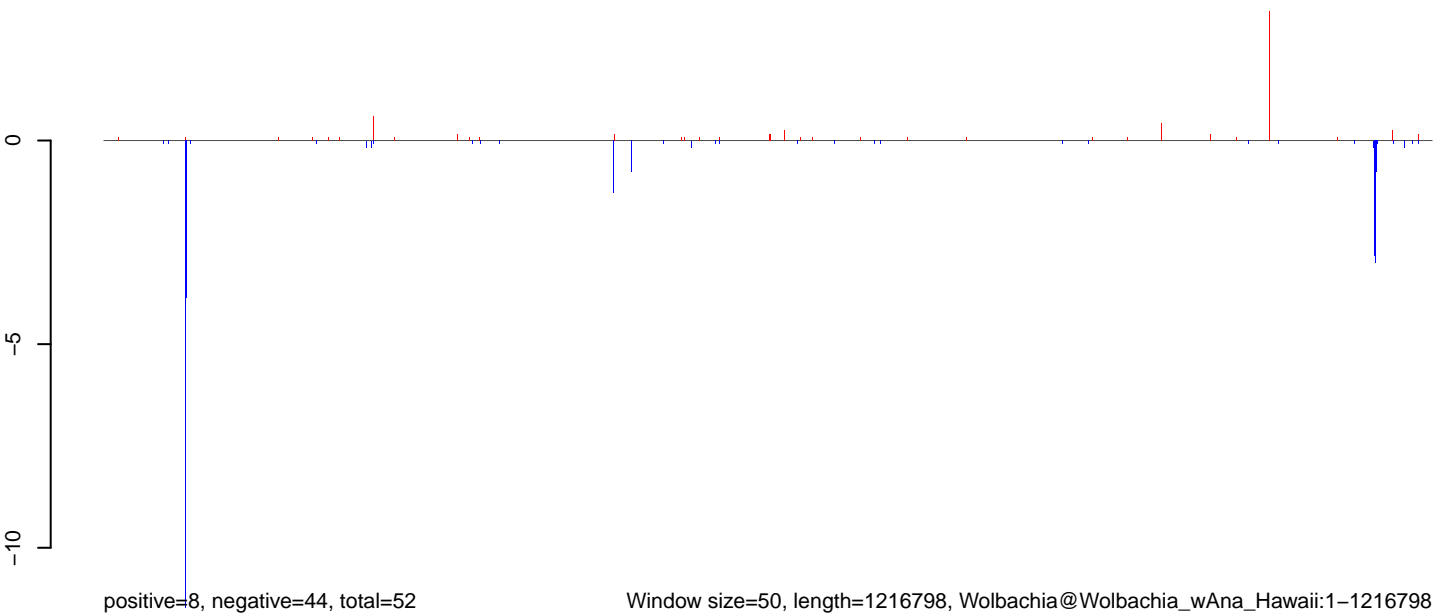
AeAlbo_FemaleMidgut_Ctrl_JG.18_23.rep



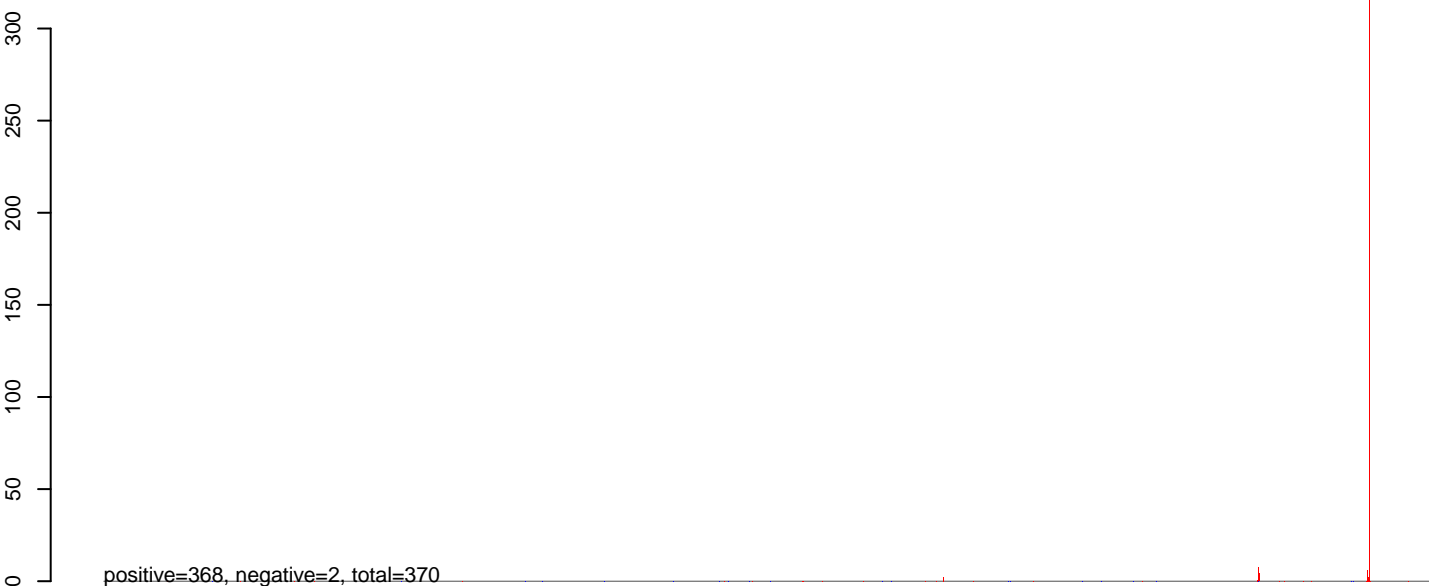
AeAlbo_FemaleMidgut_Ctrl_JG.24_35.rep



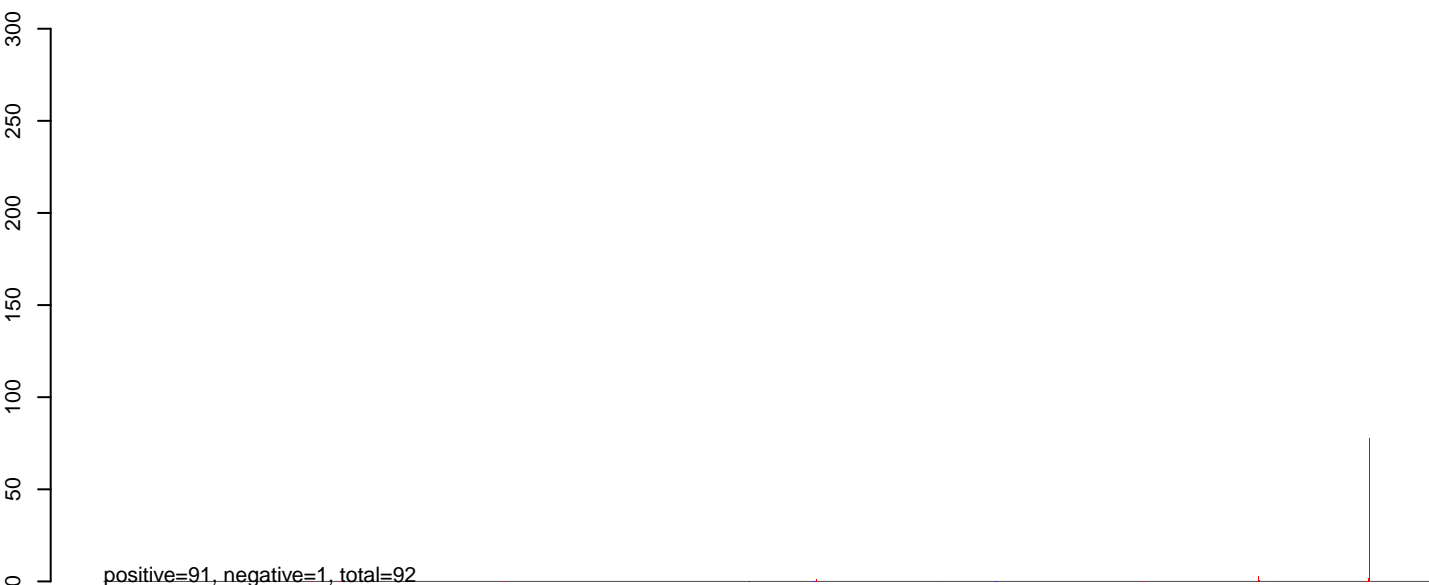
AeAlbo_FemaleMidgut_Ctrl_JG.rep



AeAlbo_FemaleMidgut_Ctrl_JG.18_23.rep



AeAlbo_FemaleMidgut_Ctrl_JG.24_35.rep

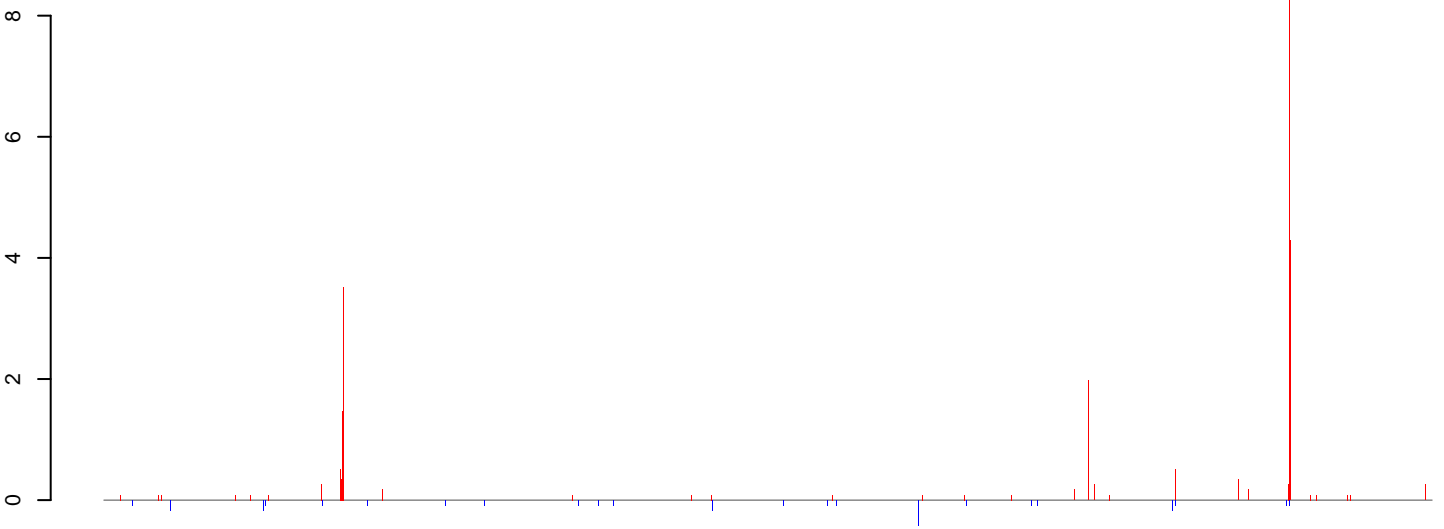


AeAlbo_FemaleMidgut_Ctrl_JG.rep



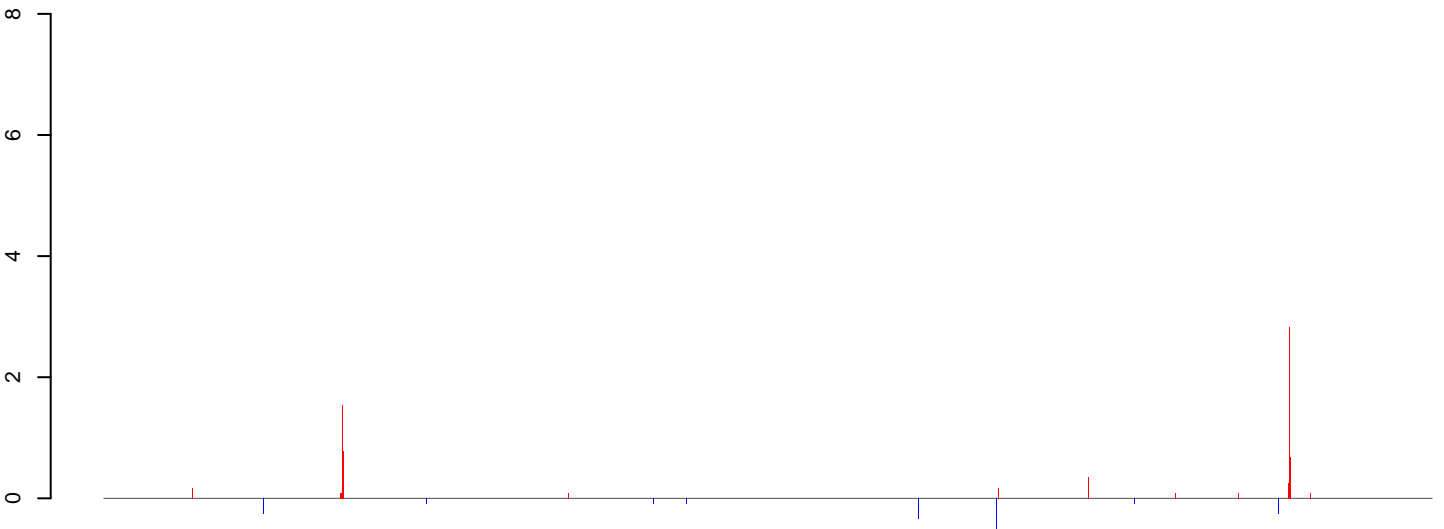
0e+00 2e+05 4e+05 6e+05 8e+05 1e+06

AeAlbo_FemaleMidgut_Ctrl_JG.18_23.rep



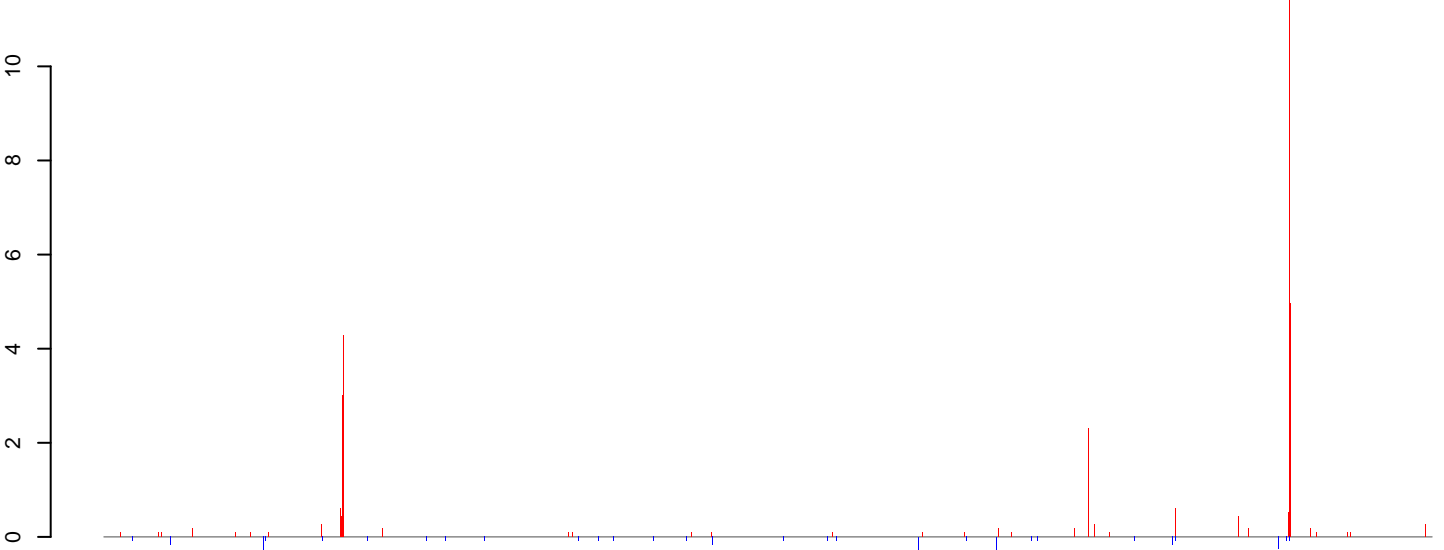
positive=36, negative=3, total=39

AeAlbo_FemaleMidgut_Ctrl_JG.24_35.rep



positive=11, negative=3, total=14

AeAlbo_FemaleMidgut_Ctrl_JG.rep

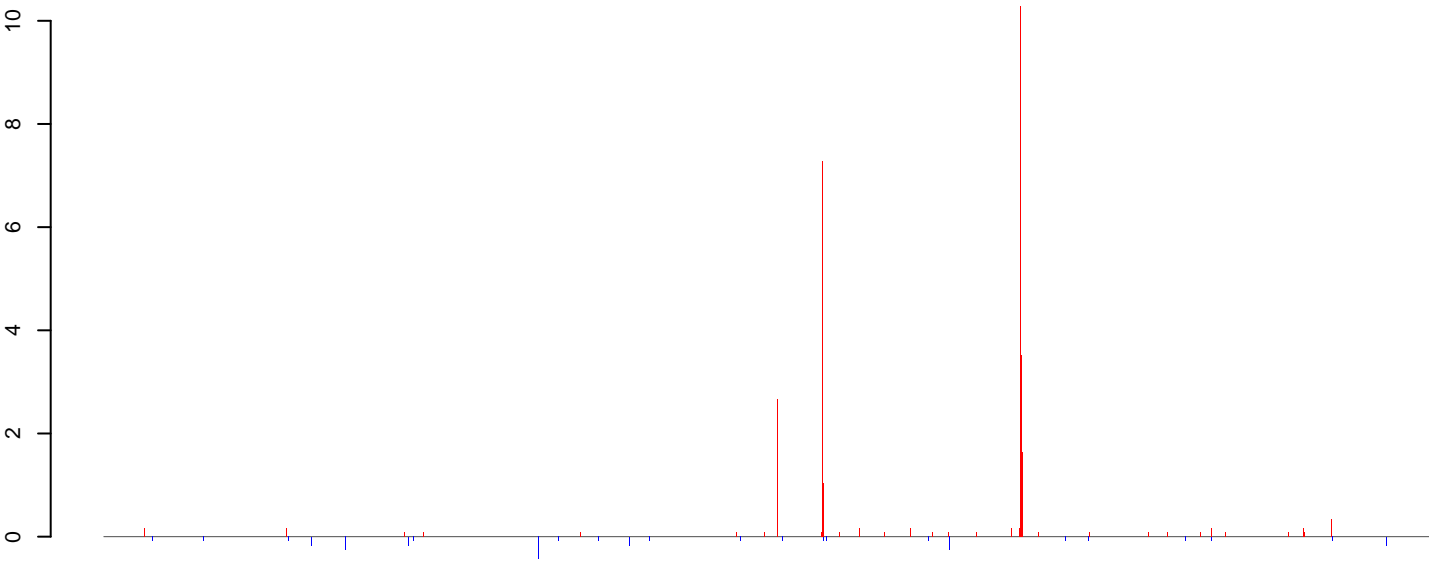


positive=47, negative=5, total=53

Window size=50, length=1049170, Wolbachia@Wolbachia_wUni:1-1049170

0e+00 2e+05 4e+05 6e+05 8e+05 1e+06

AeAlbo_FemaleMidgut_Ctrl_JG.18_23.rep



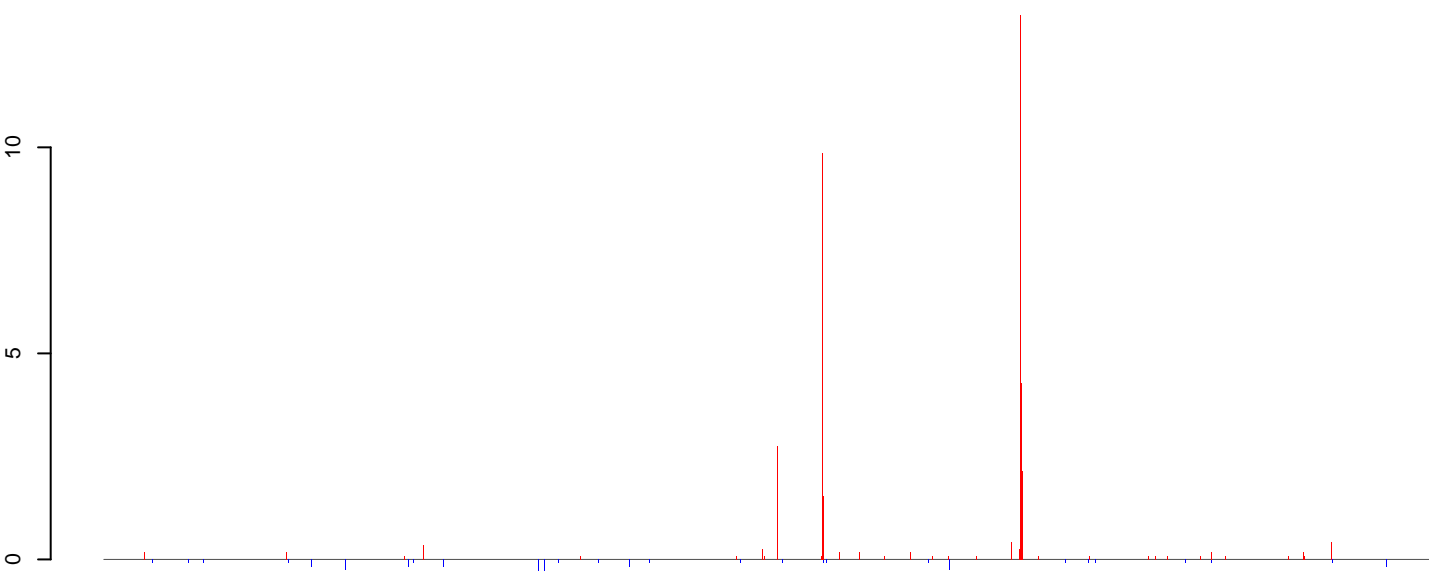
positive=41, negative=3, total=44

AeAlbo_FemaleMidgut_Ctrl_JG.24_35.rep



positive=14, negative=2, total=16

AeAlbo_FemaleMidgut_Ctrl_JG.rep

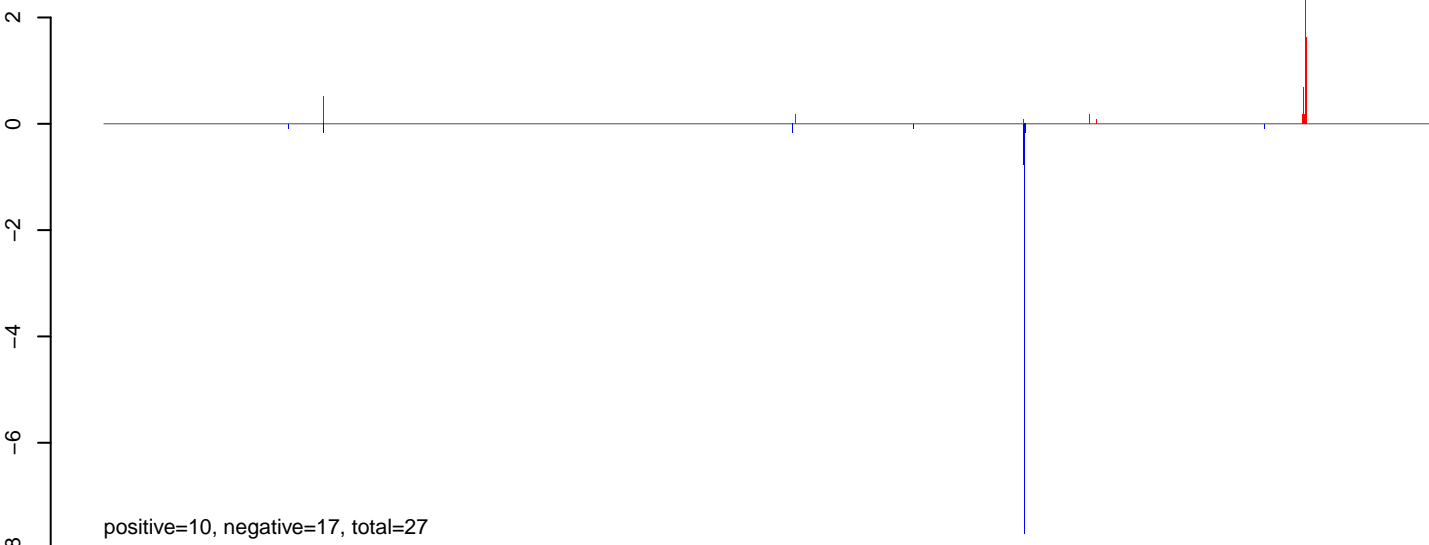


positive=55, negative=5, total=60

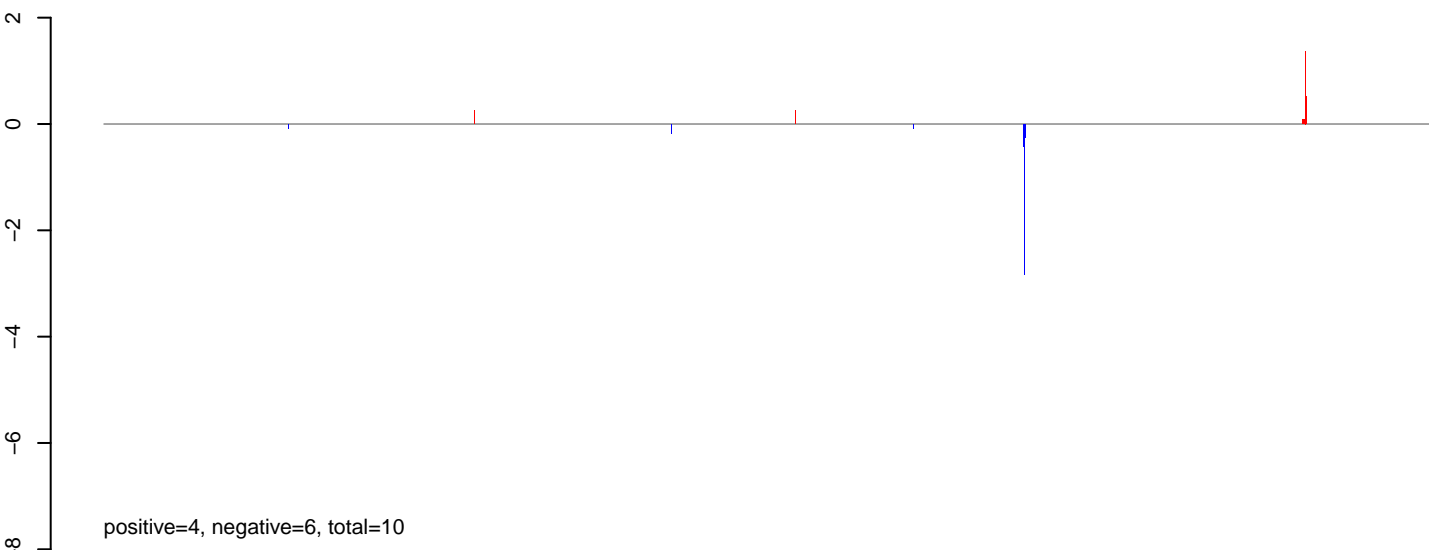
Window size=50, length=1301823, Wolbachia@Wolbachia_wSim_wNo:1-1301823

0 200000 400000 600000 800000 1000000 1200000

AeAlbo_FemaleMidgut_Ctrl_JG.18_23.rep



AeAlbo_FemaleMidgut_Ctrl_JG.24_35.rep



AeAlbo_FemaleMidgut_Ctrl_JG.rep

