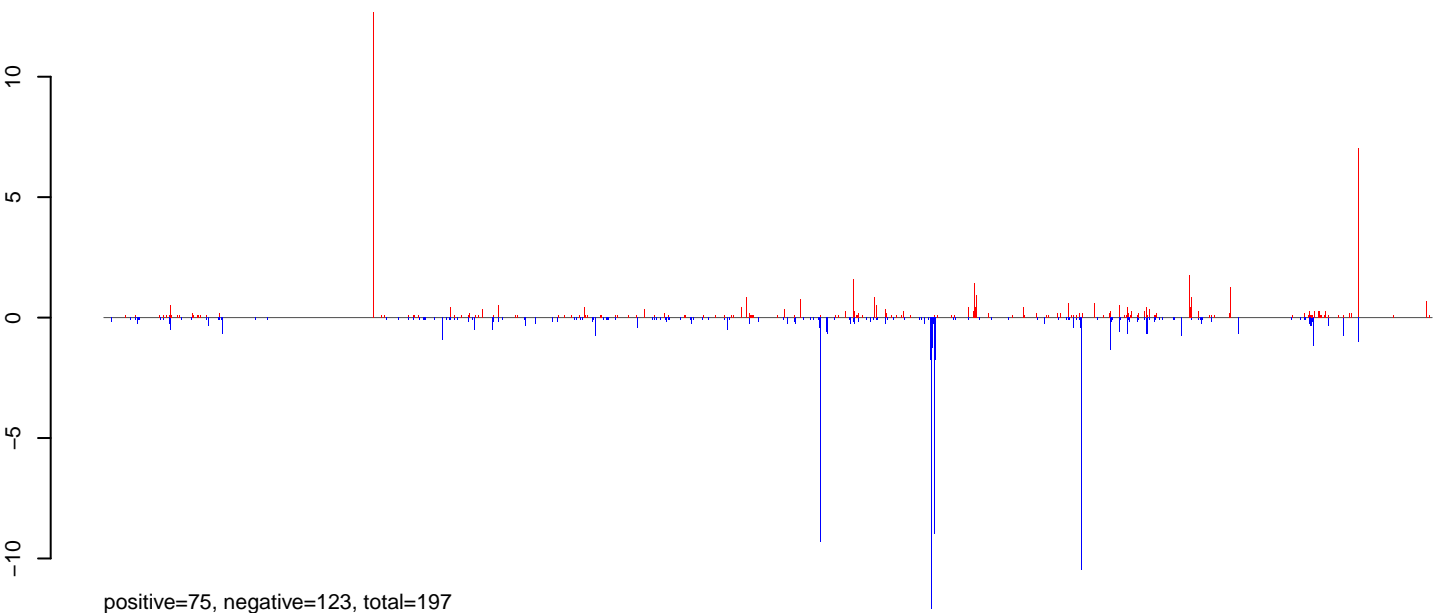
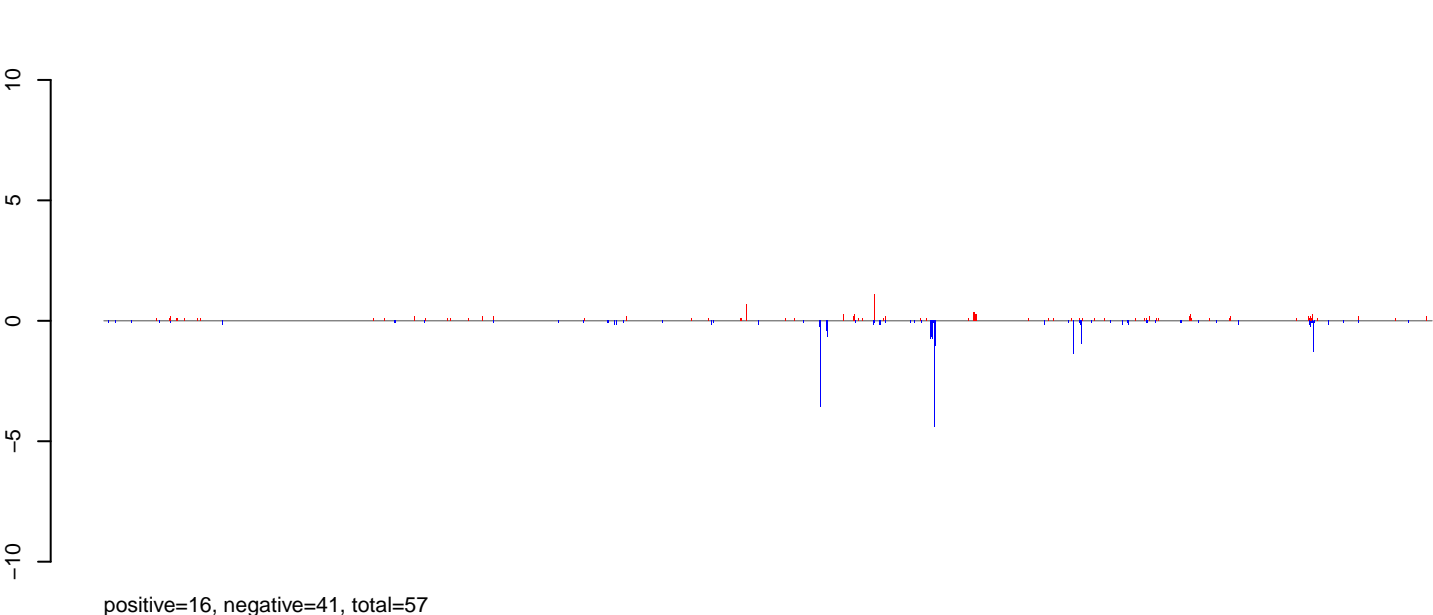


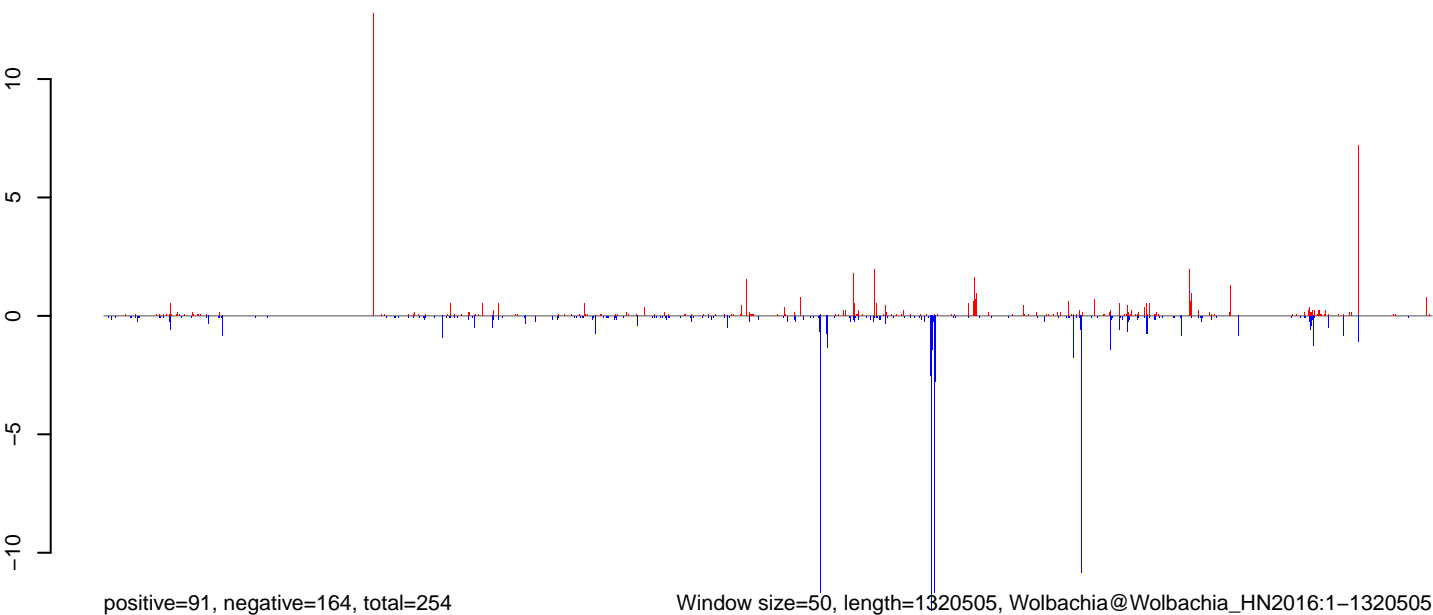
**AeAlbo\_FemaleMidgut\_Denv2\_JG.18\_23.rep**



**AeAlbo\_FemaleMidgut\_Denv2\_JG.24\_35.rep**



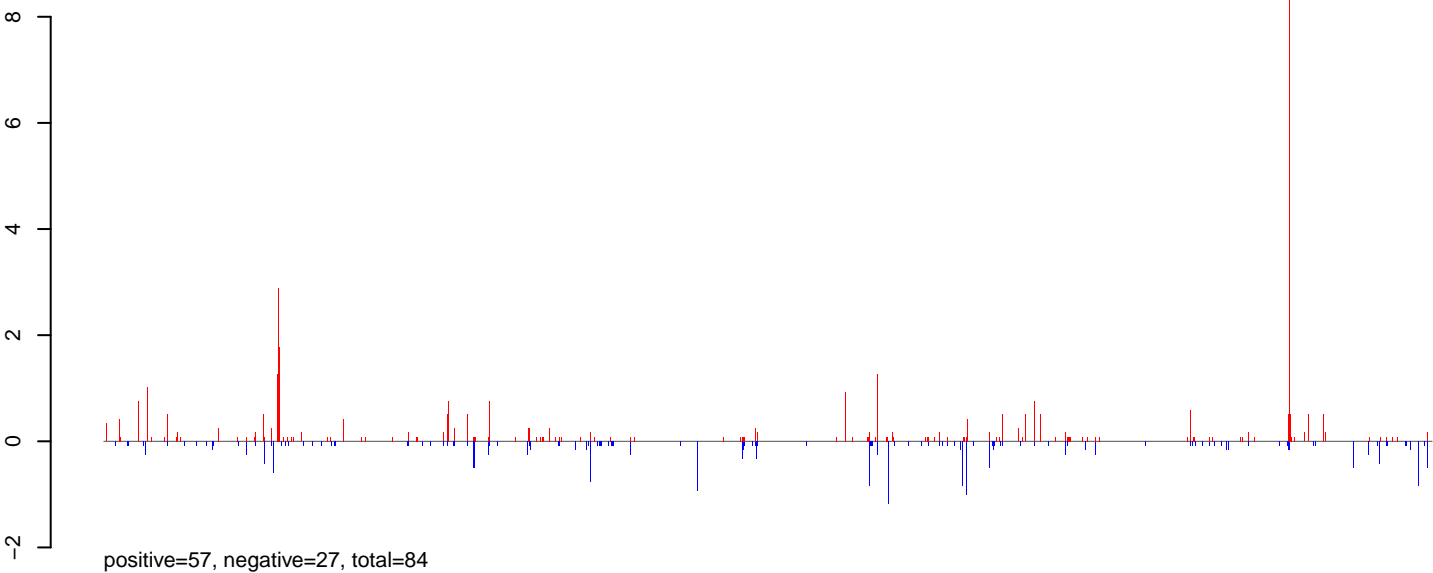
**AeAlbo\_FemaleMidgut\_Denv2\_JG.rep**



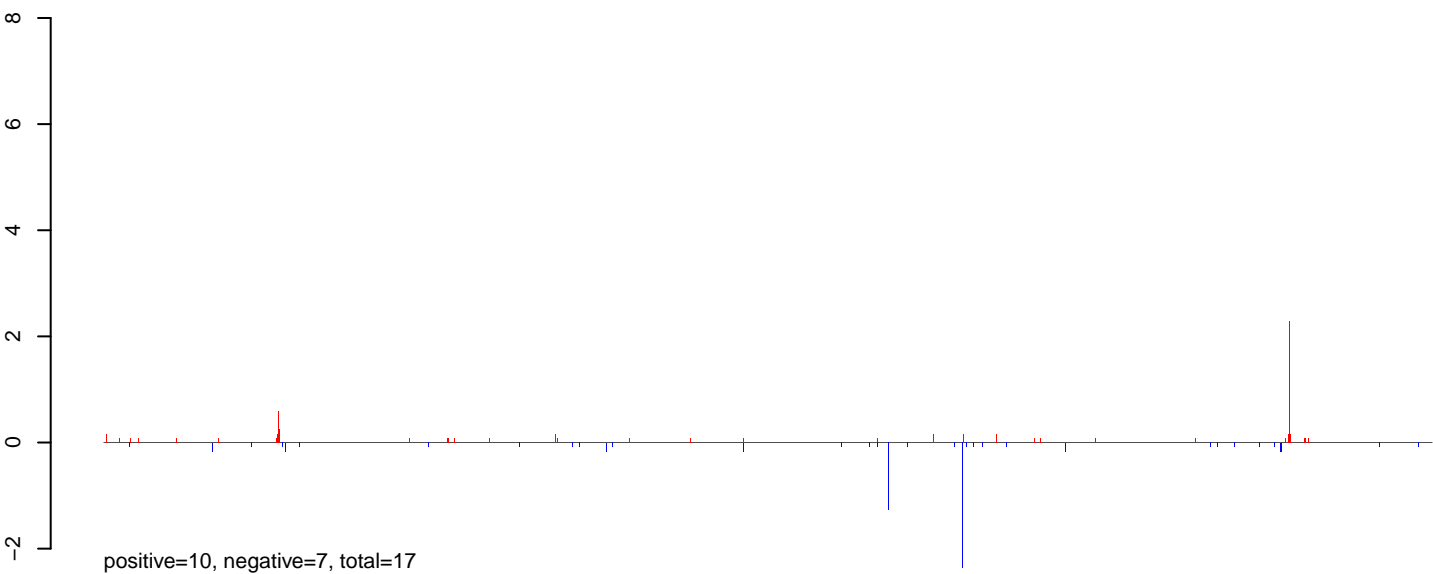
Window size=50, length=1320505, Wolbachia@Wolbachia\_HN2016:1-1320505

0 200000 400000 600000 800000 1000000 1200000

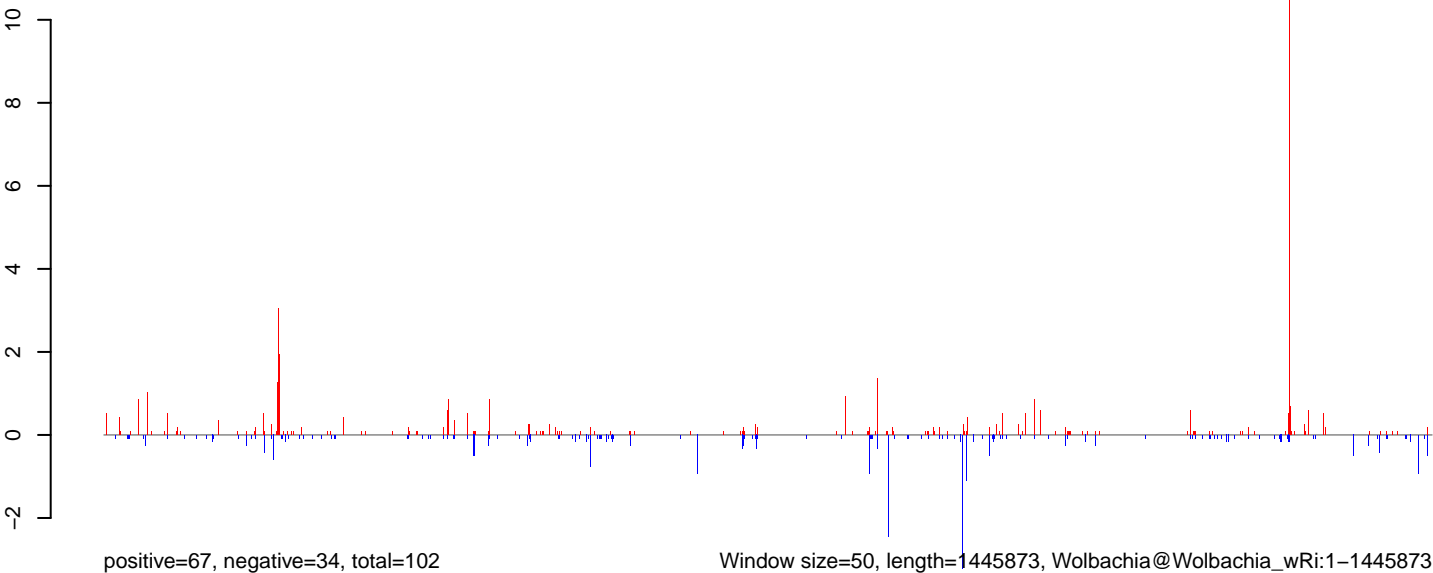
**AeAlbo\_FemaleMidgut\_Denv2\_JG.18\_23.rep**



**AeAlbo\_FemaleMidgut\_Denv2\_JG.24\_35.rep**

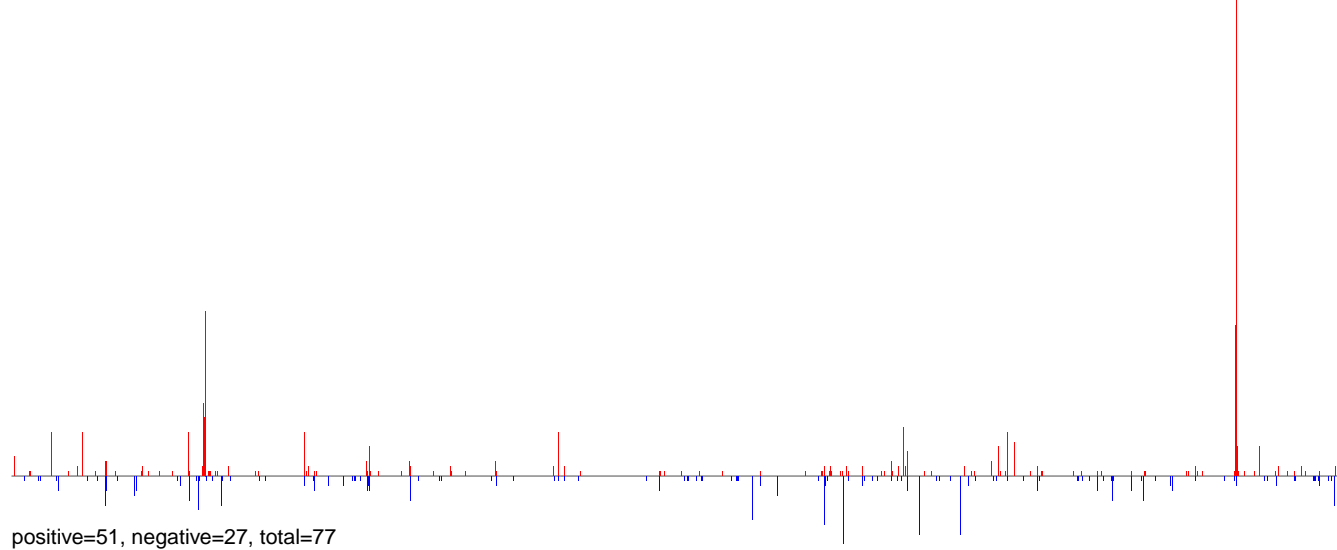


**AeAlbo\_FemaleMidgut\_Denv2\_JG.rep**

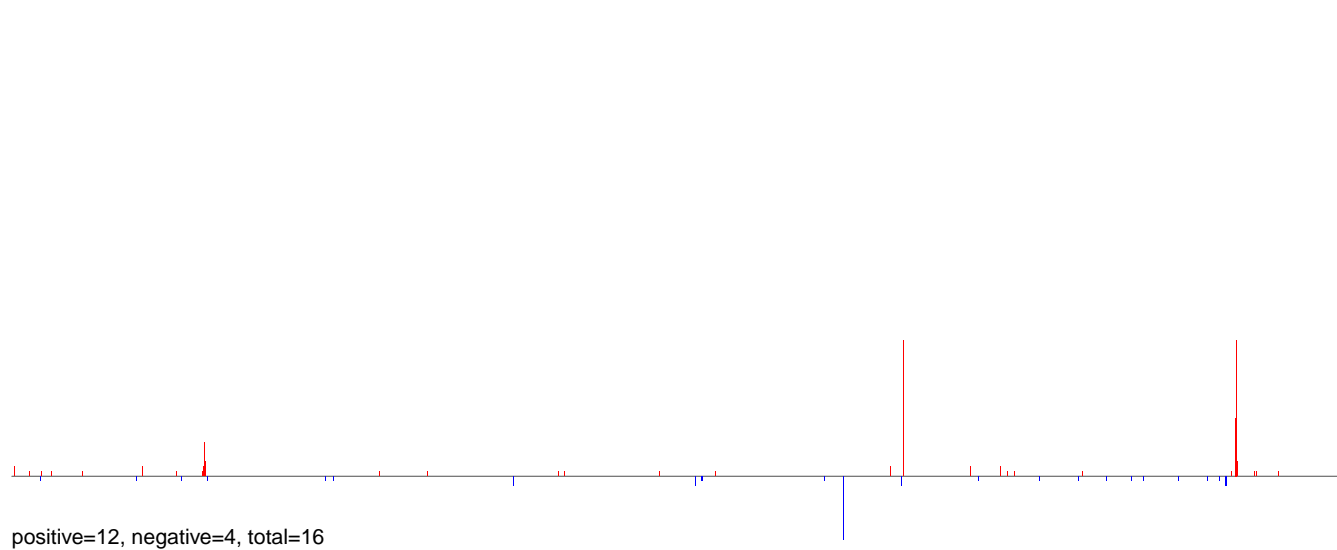


0 500000 1000000 1500000

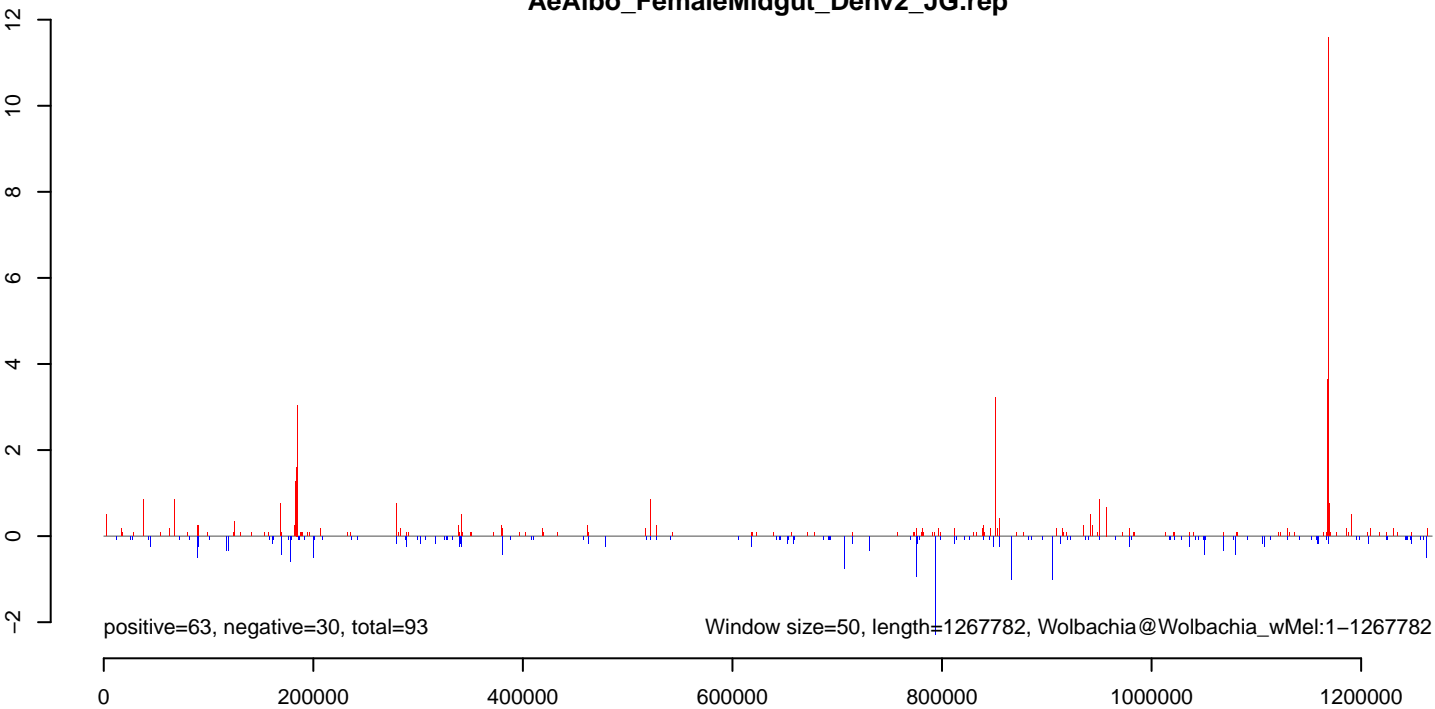
**AeAlbo\_FemaleMidgut\_Denv2\_JG.18\_23.rep**



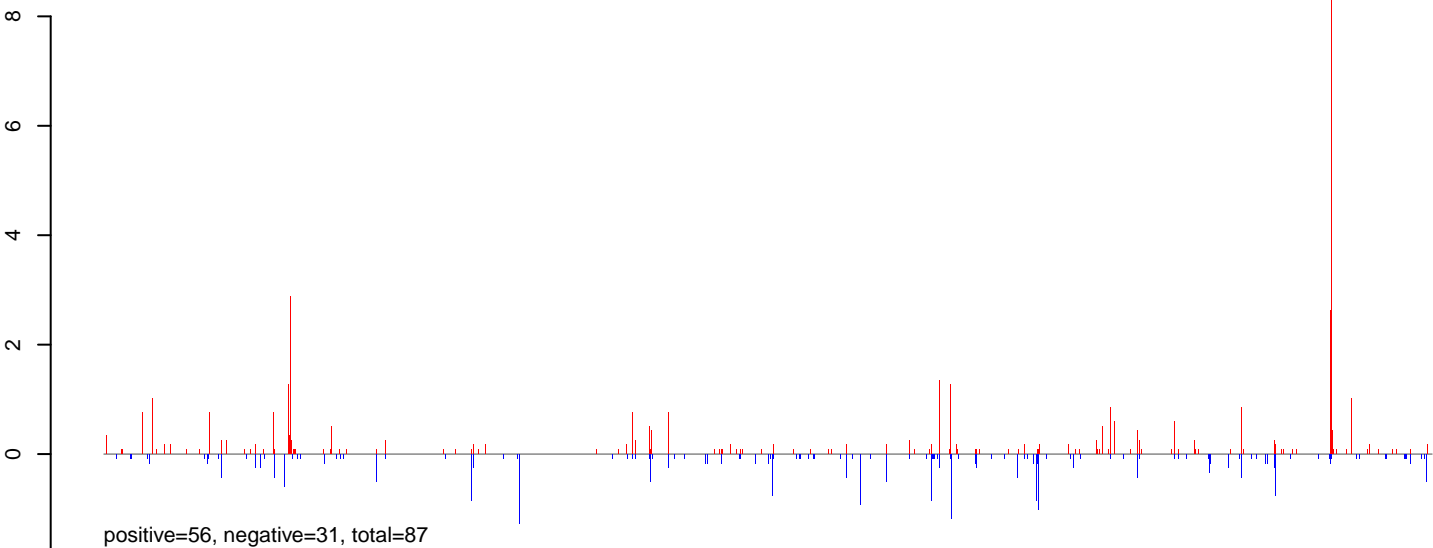
**AeAlbo\_FemaleMidgut\_Denv2\_JG.24\_35.rep**



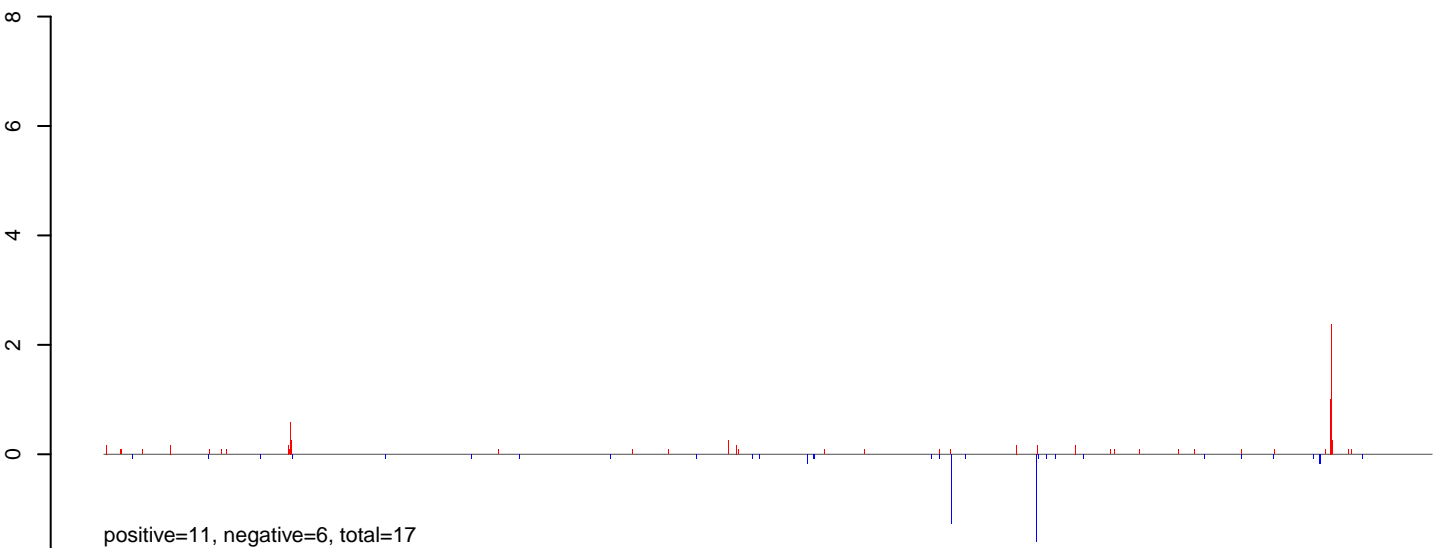
**AeAlbo\_FemaleMidgut\_Denv2\_JG.rep**



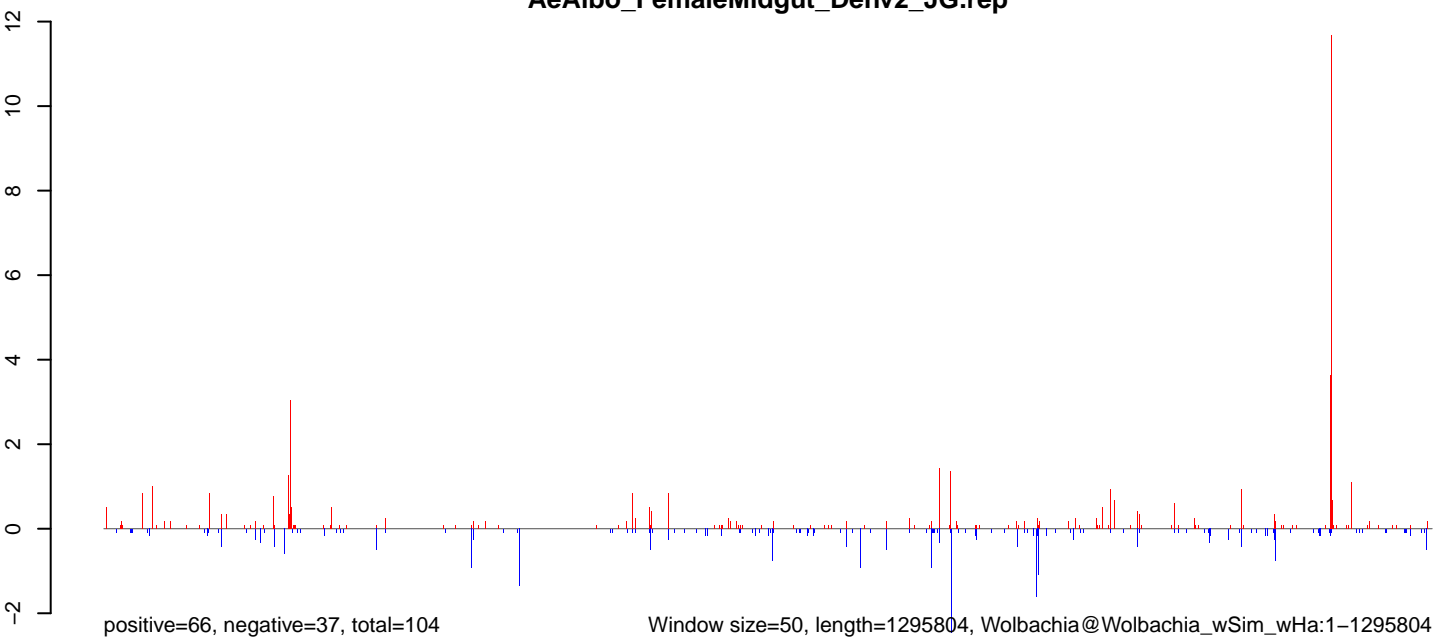
**AeAlbo\_FemaleMidgut\_Denv2\_JG.18\_23.rep**



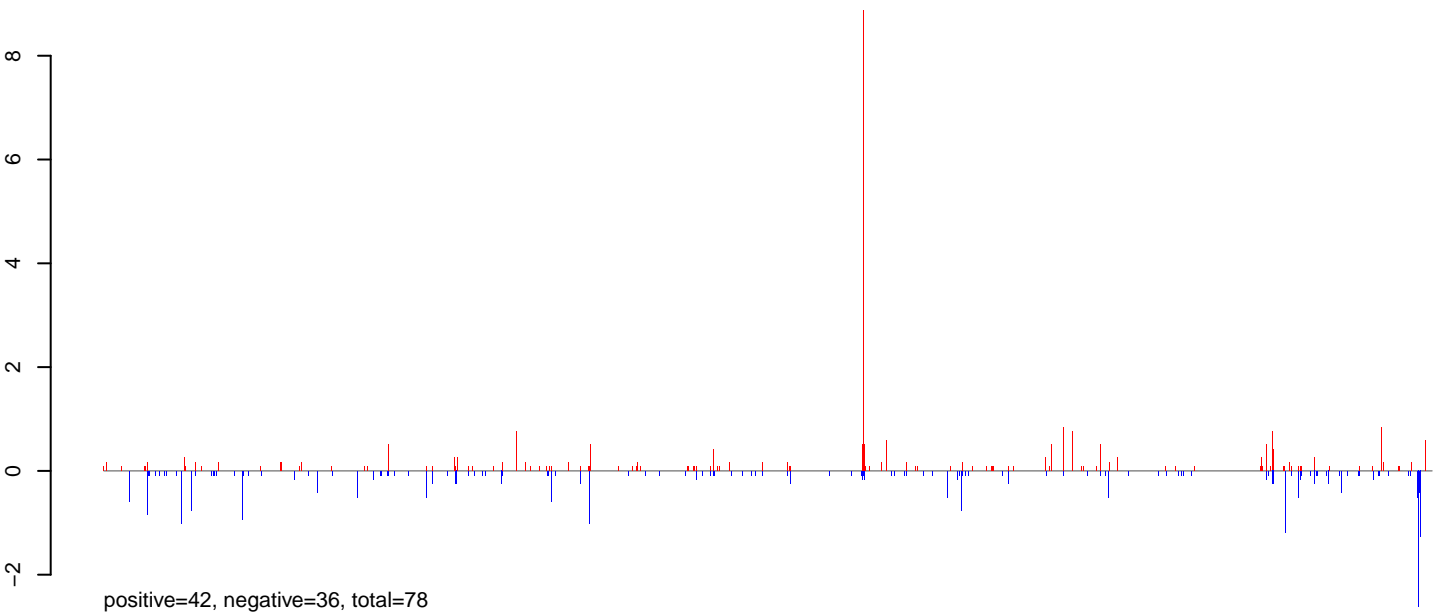
**AeAlbo\_FemaleMidgut\_Denv2\_JG.24\_35.rep**



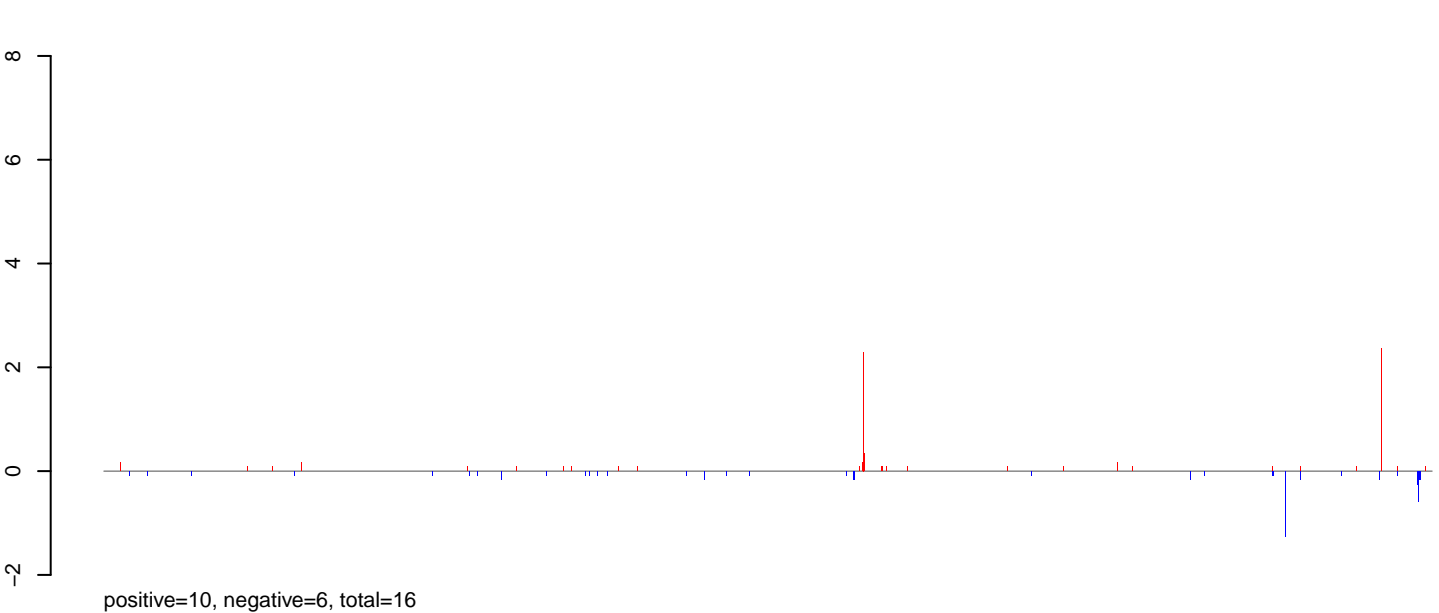
**AeAlbo\_FemaleMidgut\_Denv2\_JG.rep**



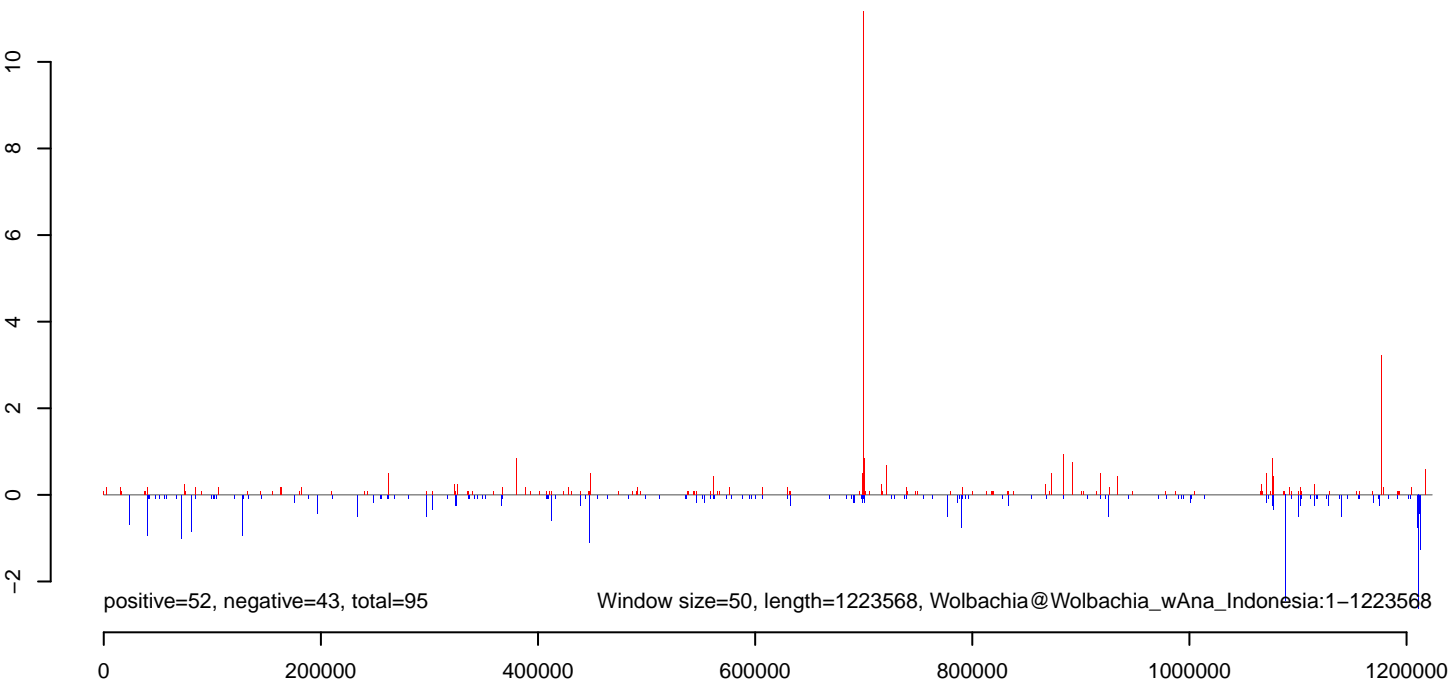
**AeAlbo\_FemaleMidgut\_Denv2\_JG.18\_23.rep**



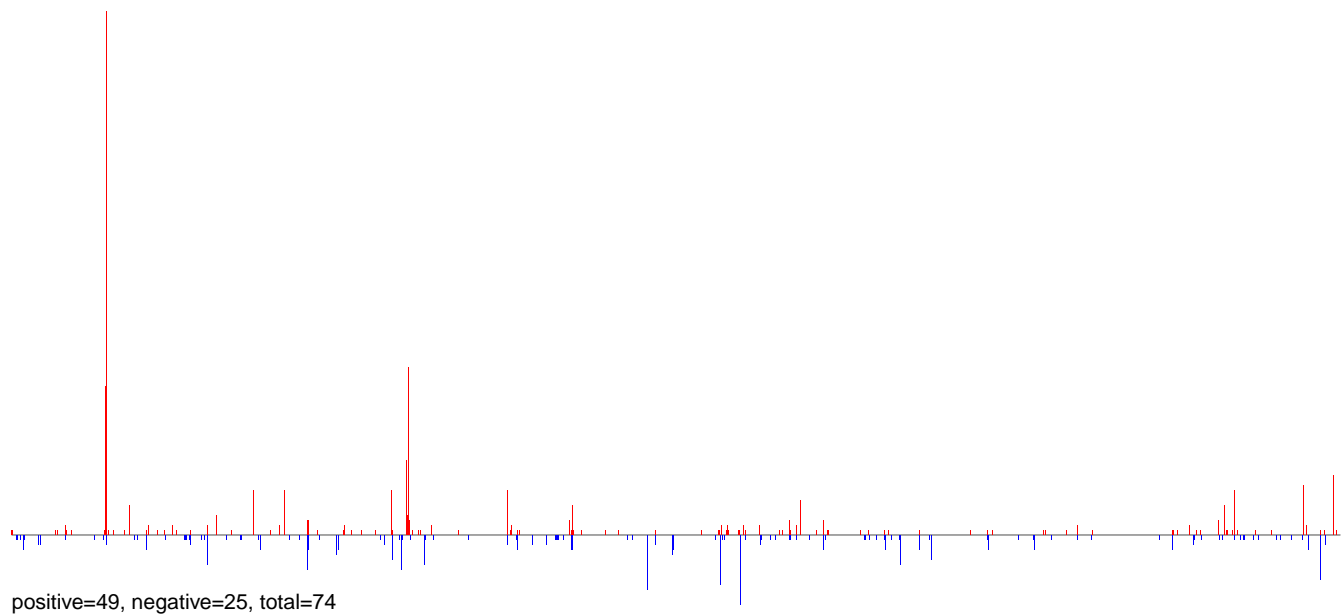
**AeAlbo\_FemaleMidgut\_Denv2\_JG.24\_35.rep**



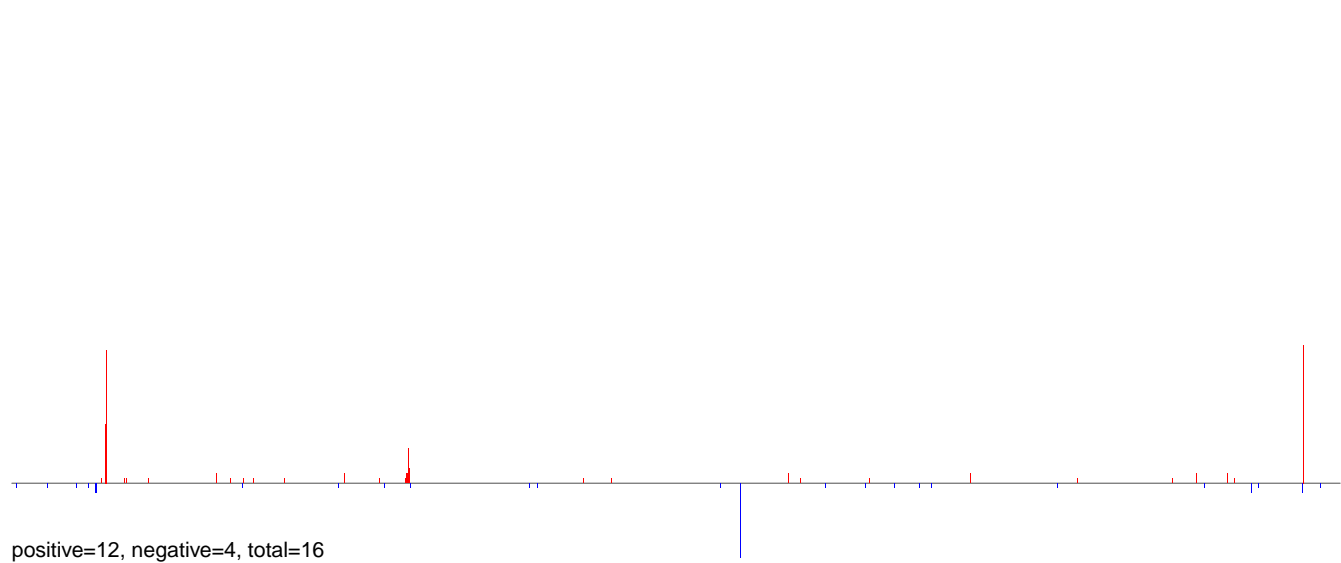
**AeAlbo\_FemaleMidgut\_Denv2\_JG.rep**



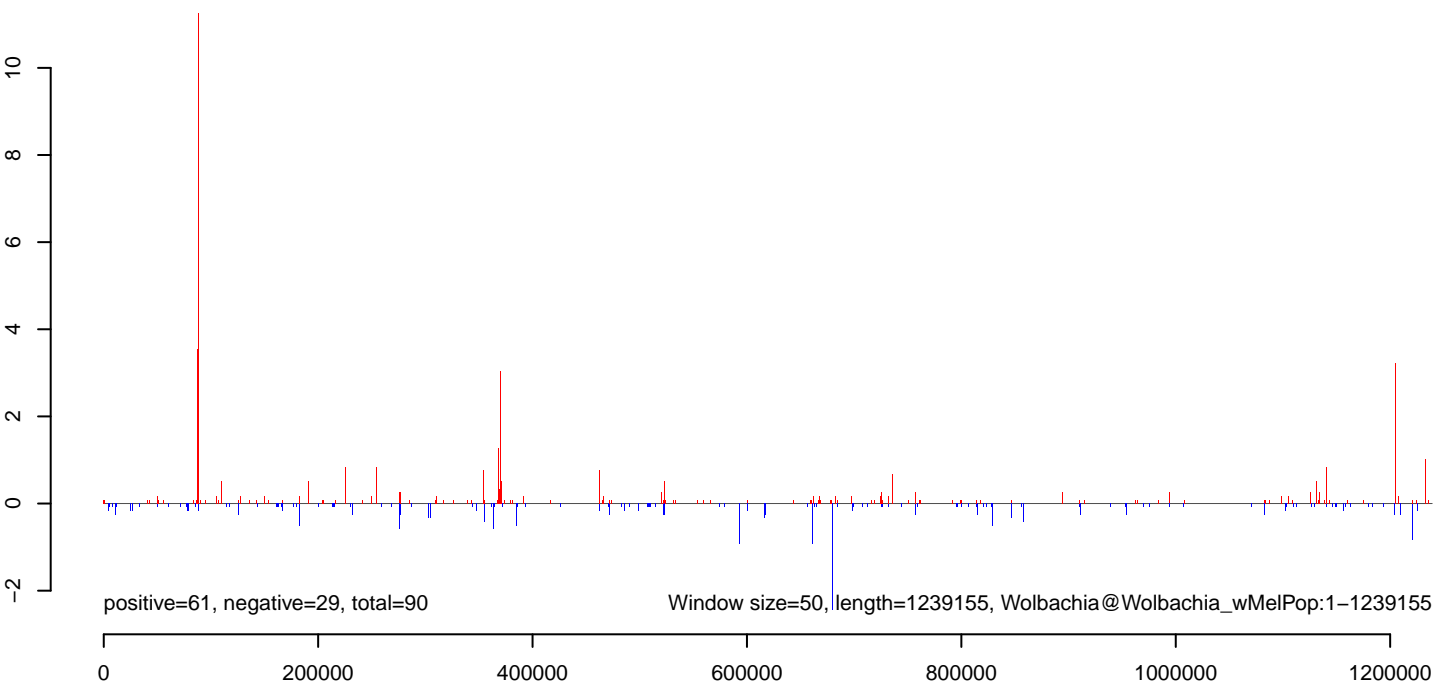
**AeAlbo\_FemaleMidgut\_Denv2\_JG.18\_23.rep**



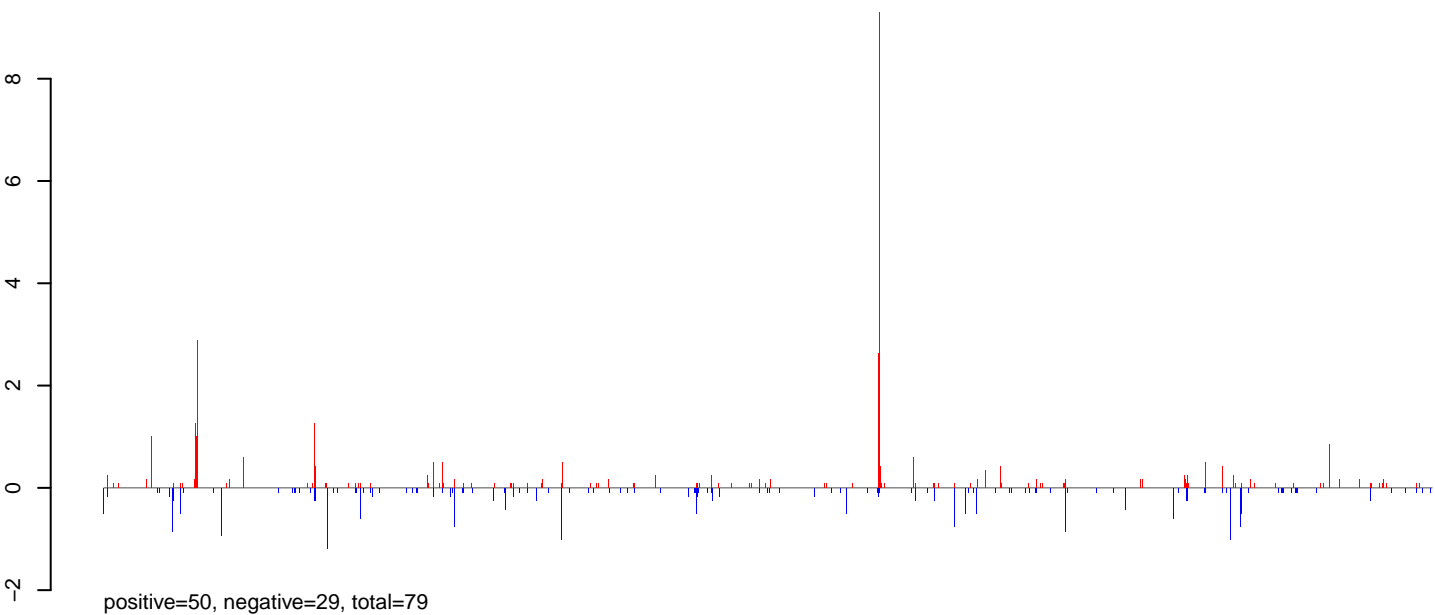
**AeAlbo\_FemaleMidgut\_Denv2\_JG.24\_35.rep**



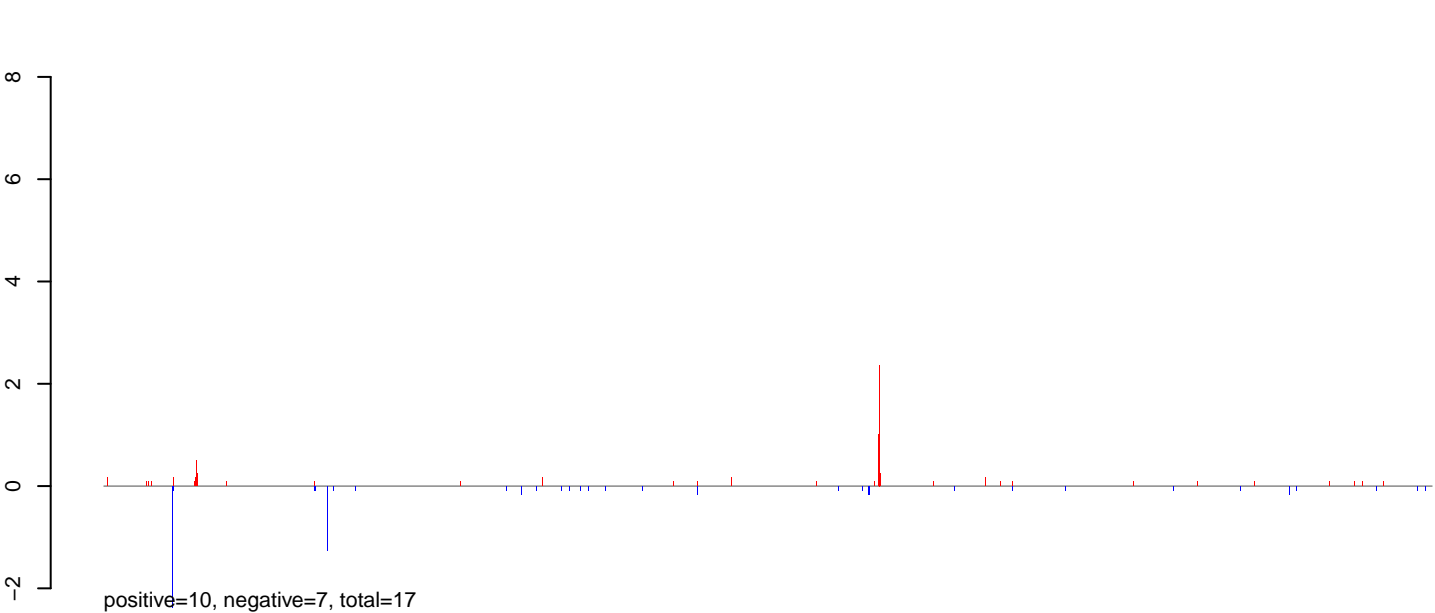
**AeAlbo\_FemaleMidgut\_Denv2\_JG.rep**



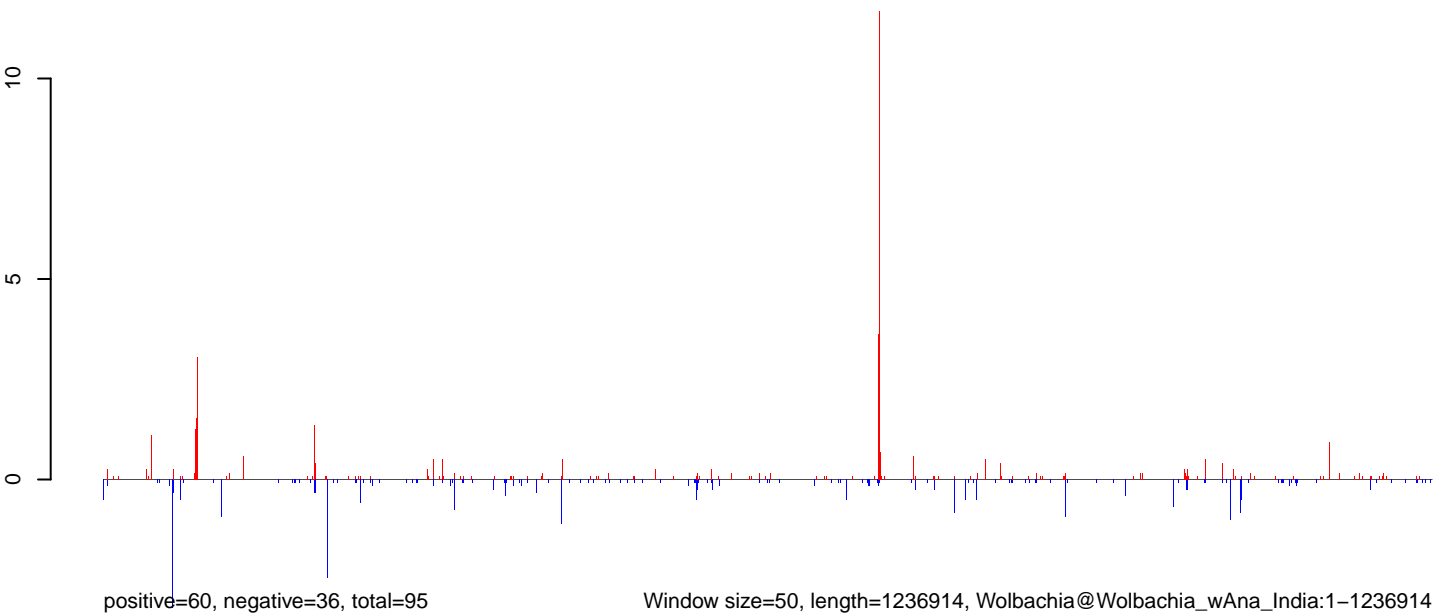
**AeAlbo\_FemaleMidgut\_Denv2\_JG.18\_23.rep**



**AeAlbo\_FemaleMidgut\_Denv2\_JG.24\_35.rep**



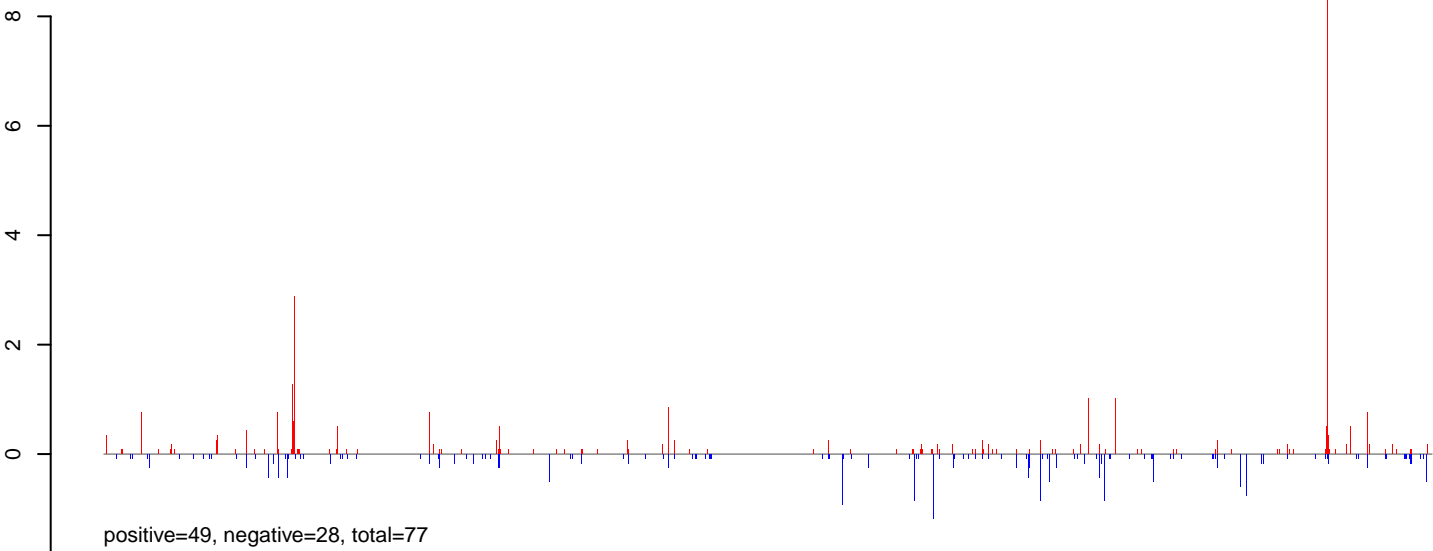
**AeAlbo\_FemaleMidgut\_Denv2\_JG.rep**



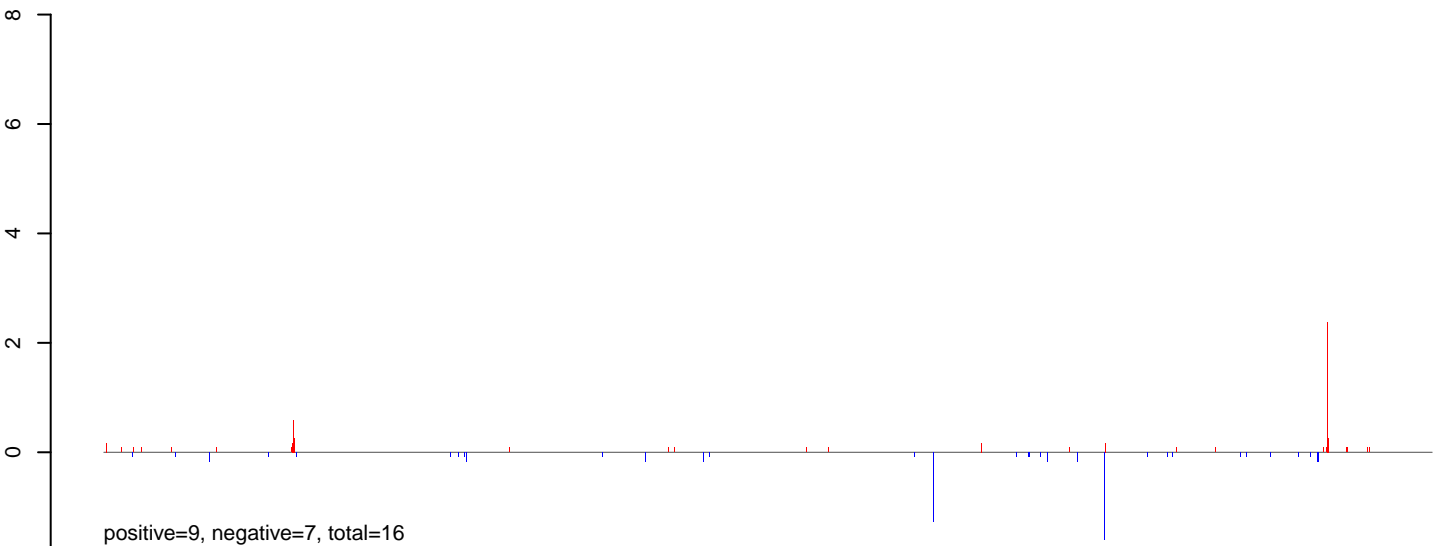
Window size=50, length=1236914, Wolbachia@Wolbachia\_wAna\_India:1-1236914

0 200000 400000 600000 800000 1000000 1200000

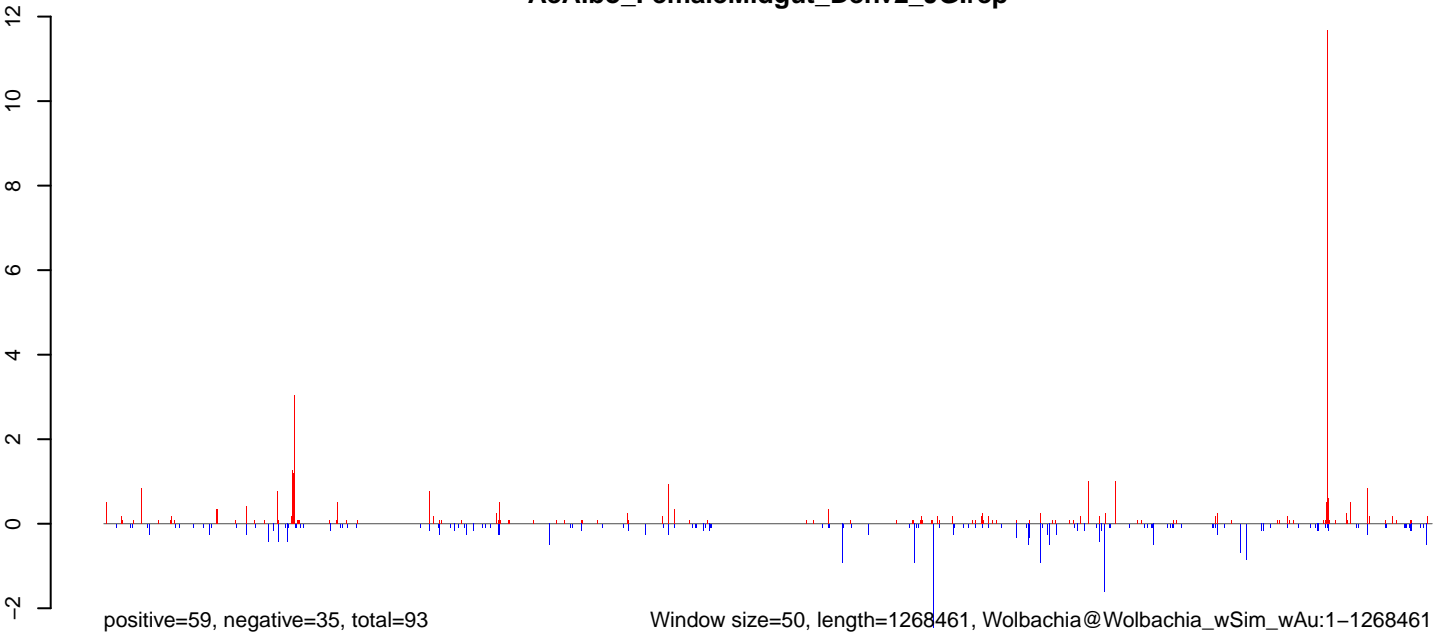
**AeAlbo\_FemaleMidgut\_Denv2\_JG.18\_23.rep**



**AeAlbo\_FemaleMidgut\_Denv2\_JG.24\_35.rep**



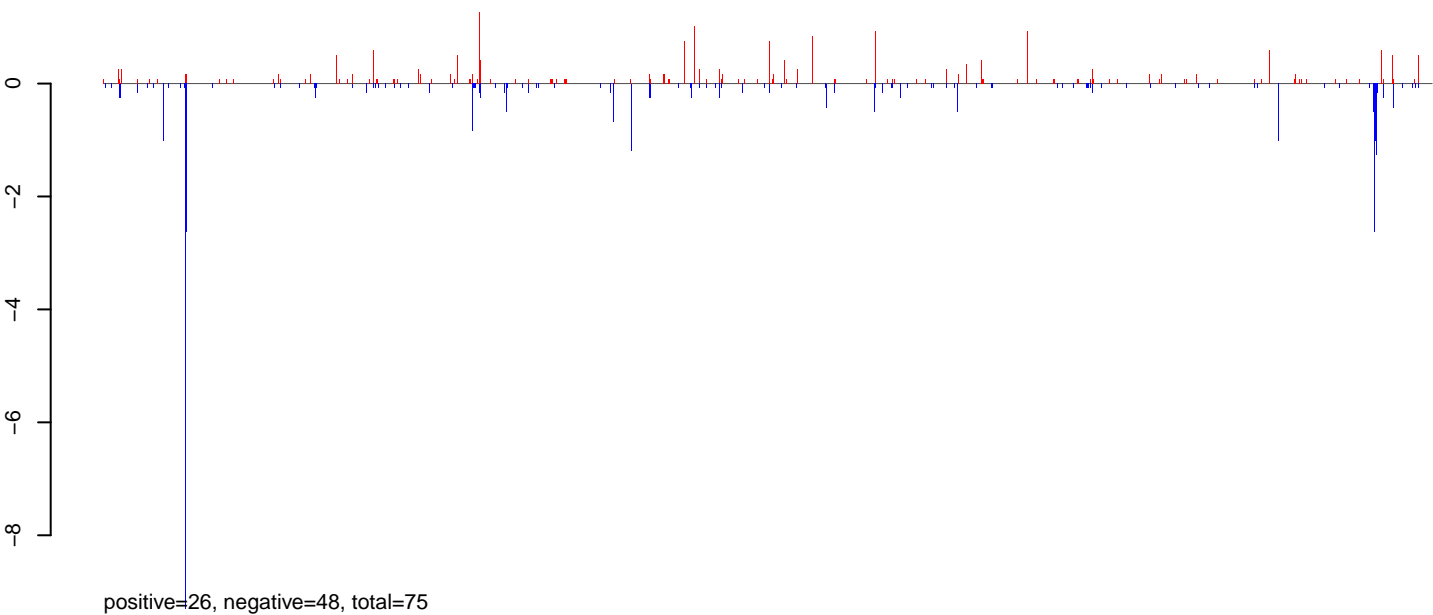
**AeAlbo\_FemaleMidgut\_Denv2\_JG.rep**



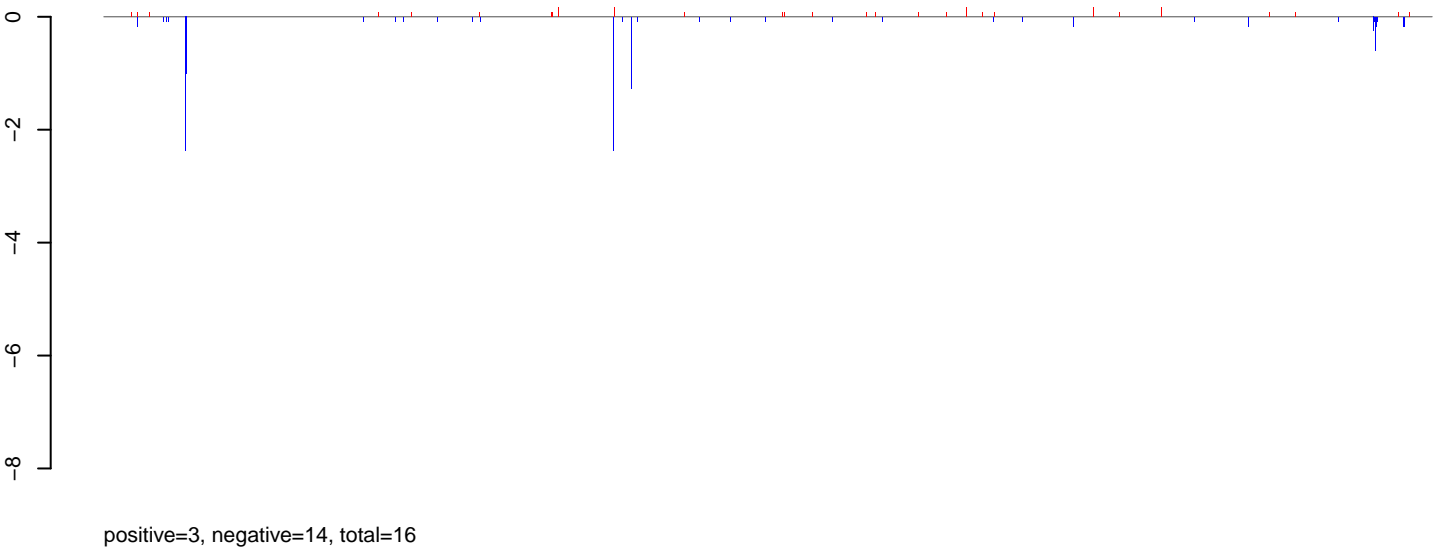
0 200000 400000 600000 800000 1000000 1200000



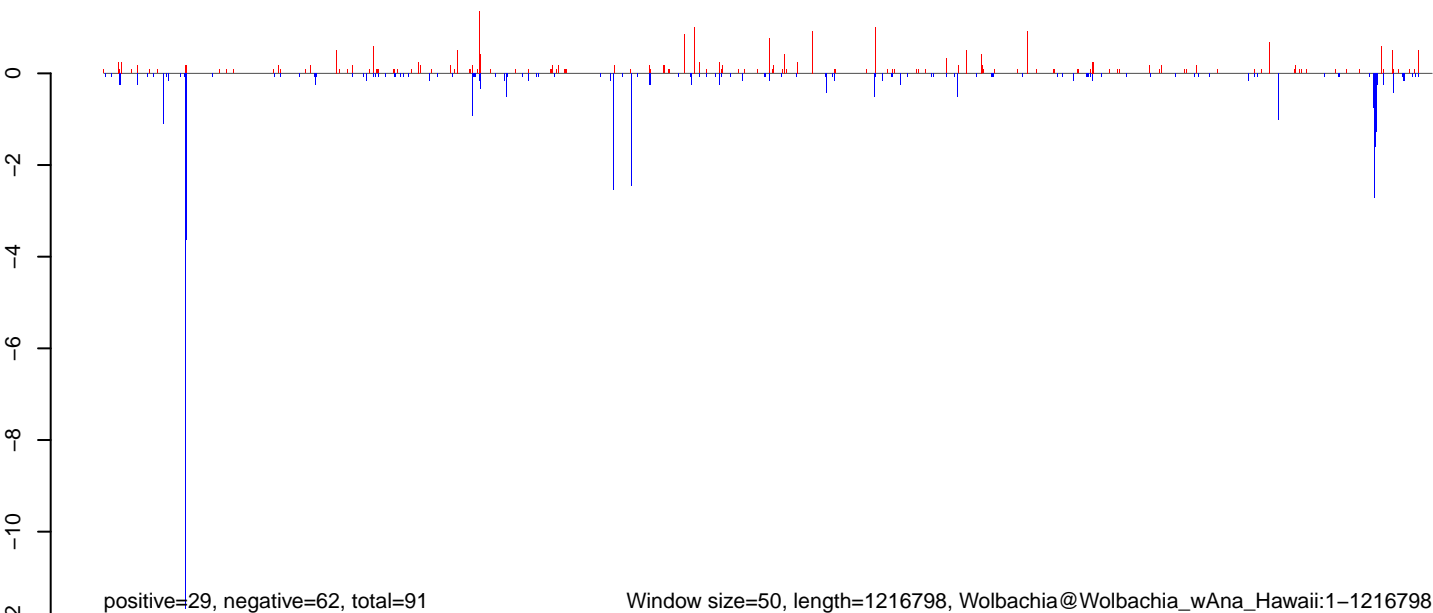
**AeAlbo\_FemaleMidgut\_Denv2\_JG.18\_23.rep**



**AeAlbo\_FemaleMidgut\_Denv2\_JG.24\_35.rep**

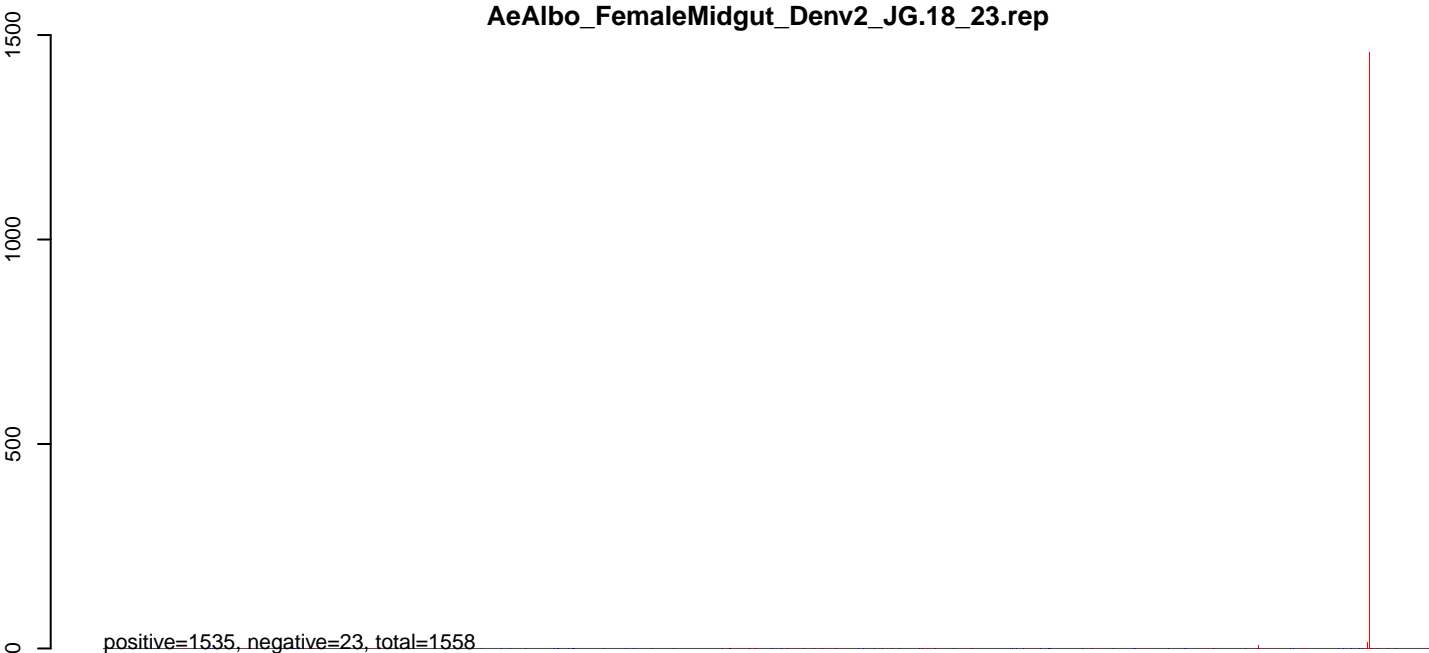


**AeAlbo\_FemaleMidgut\_Denv2\_JG.rep**

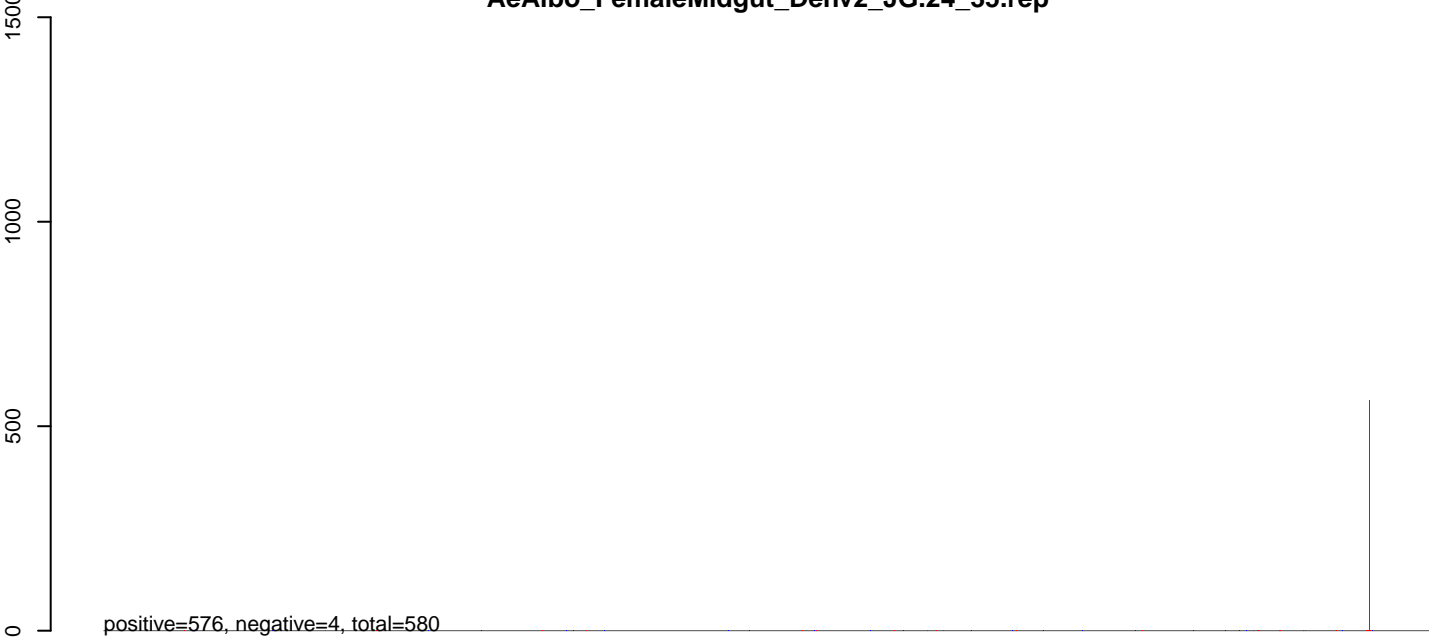


0 200000 400000 600000 800000 1000000 1200000

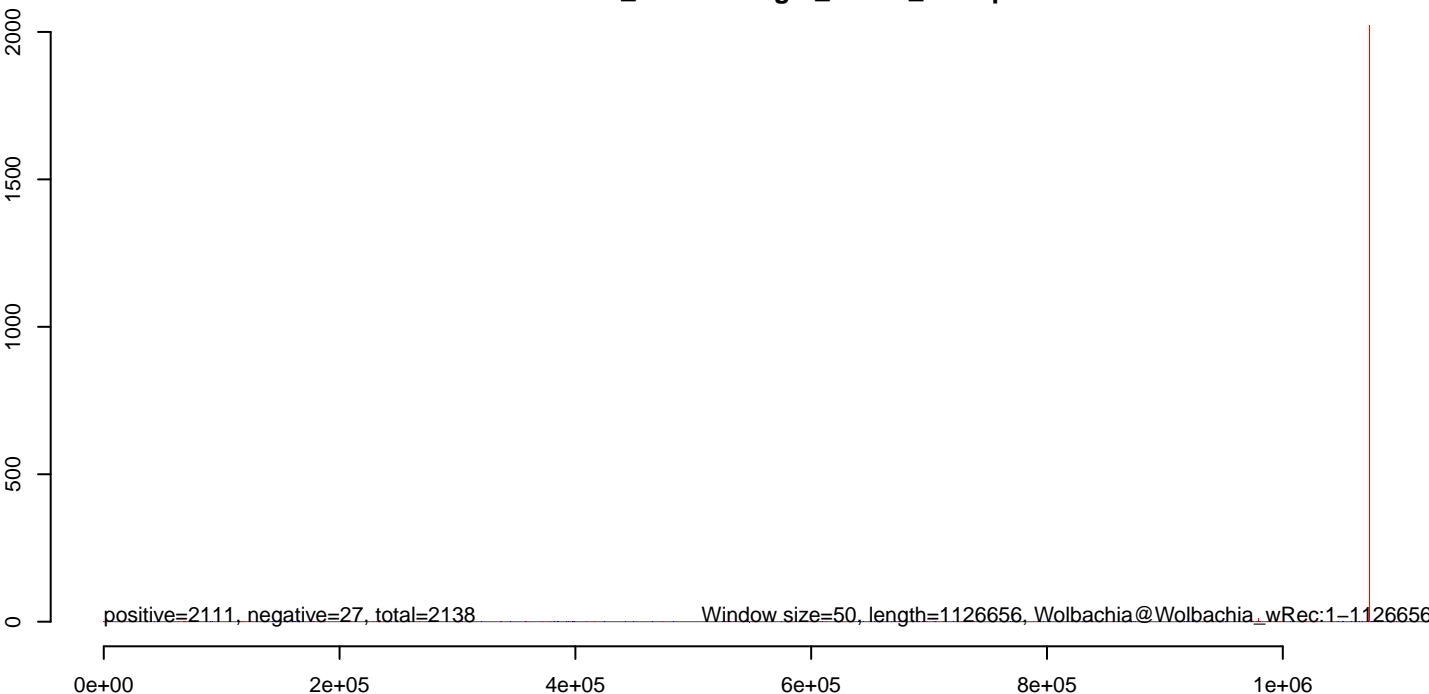
**AeAlbo\_FemaleMidgut\_Denv2\_JG.18\_23.rep**



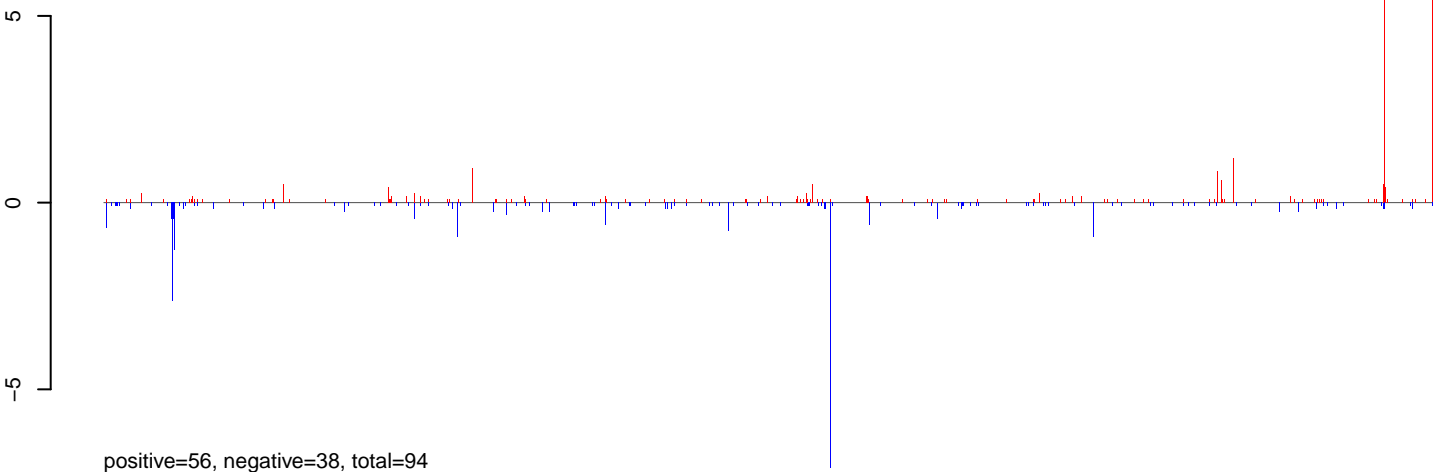
**AeAlbo\_FemaleMidgut\_Denv2\_JG.24\_35.rep**



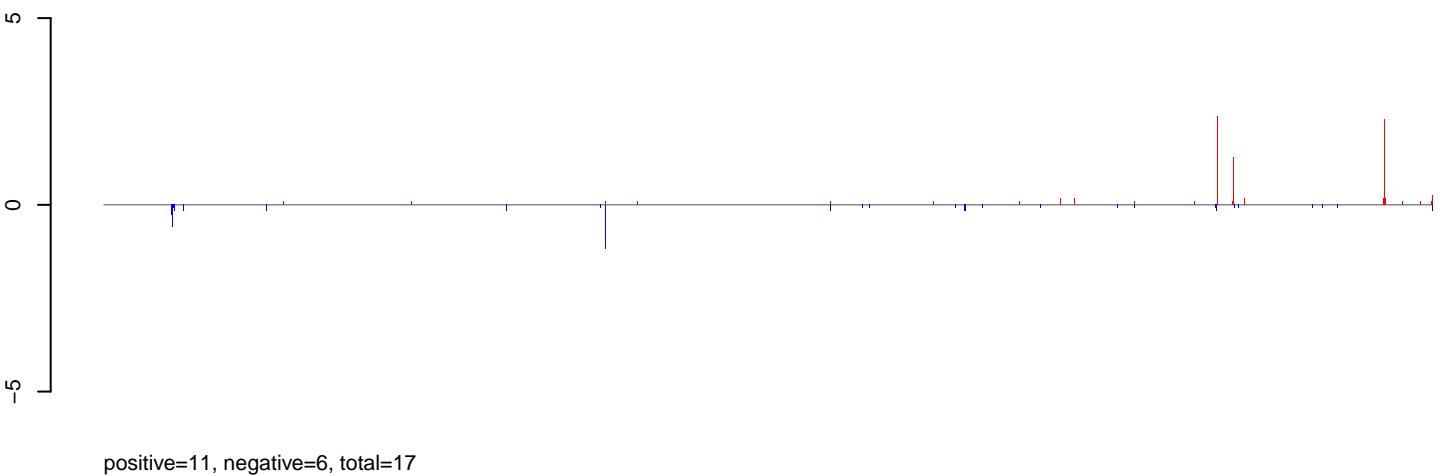
**AeAlbo\_FemaleMidgut\_Denv2\_JG.rep**



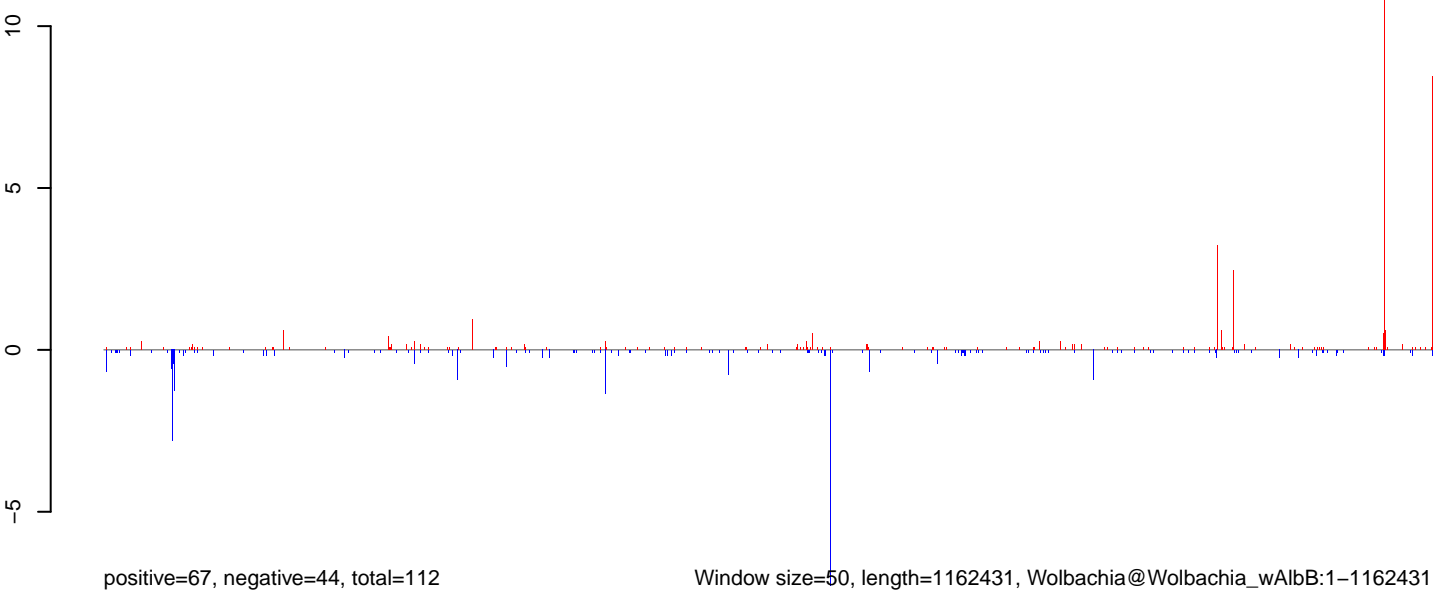
**AeAlbo\_FemaleMidgut\_Denv2\_JG.18\_23.rep**



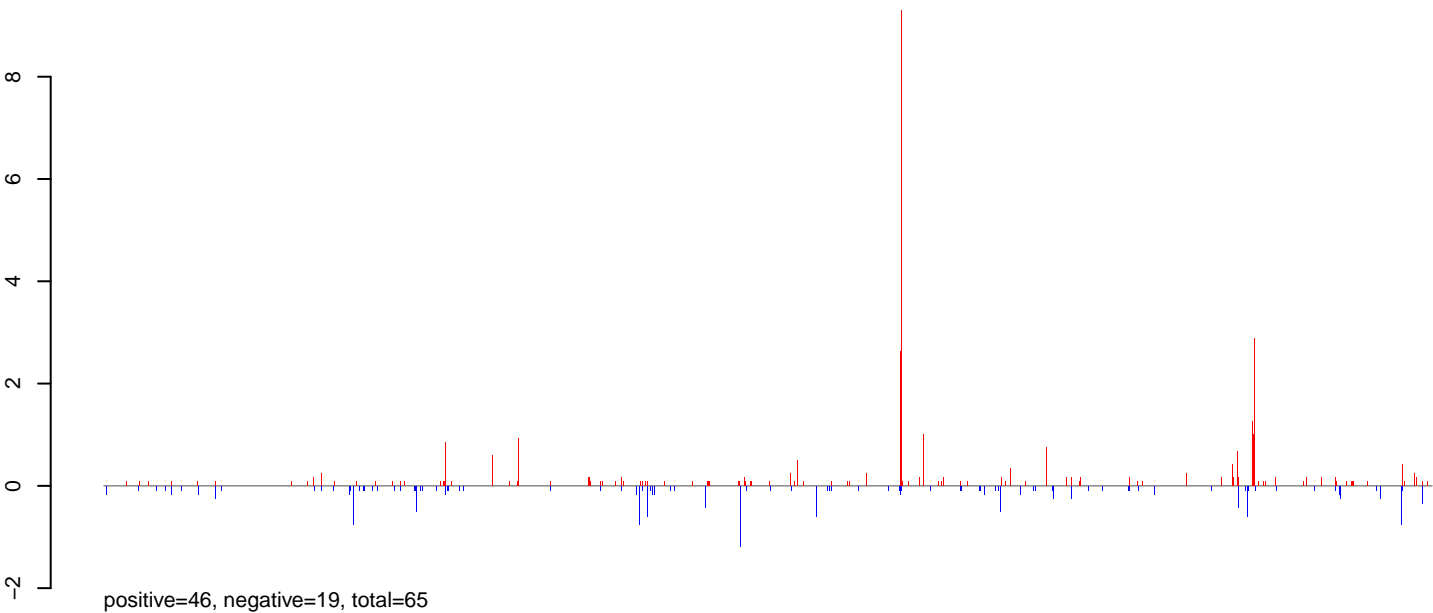
**AeAlbo\_FemaleMidgut\_Denv2\_JG.24\_35.rep**



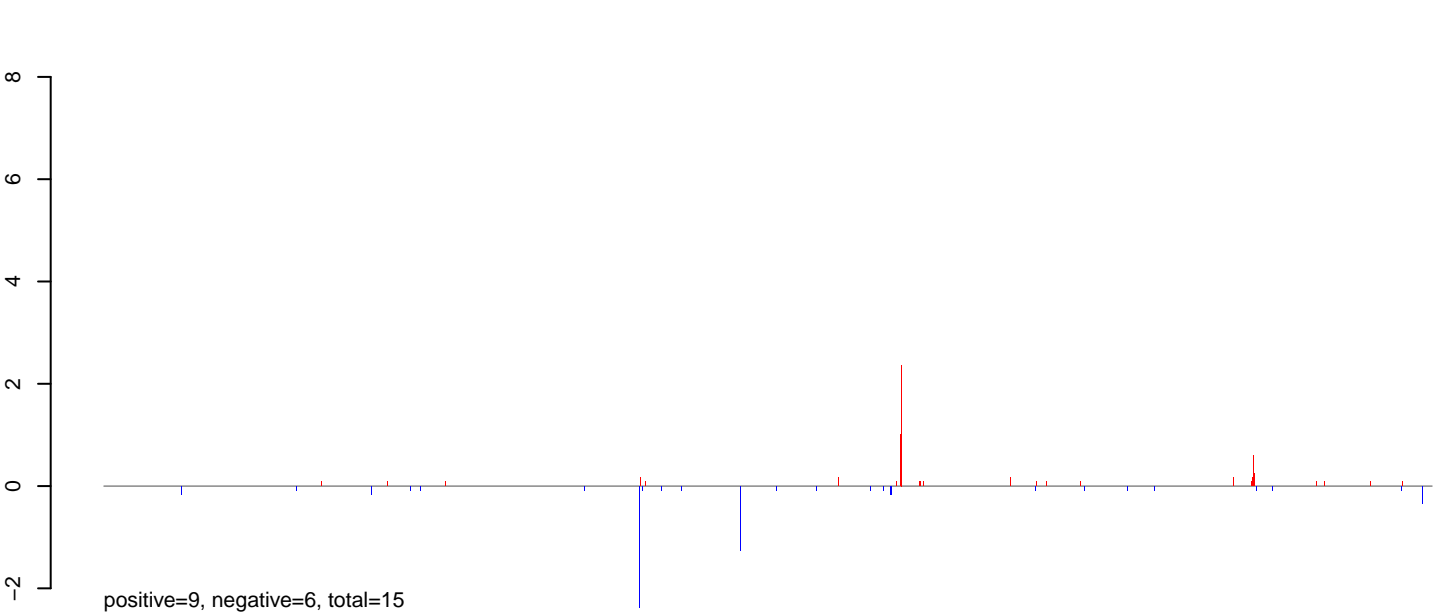
**AeAlbo\_FemaleMidgut\_Denv2\_JG.rep**



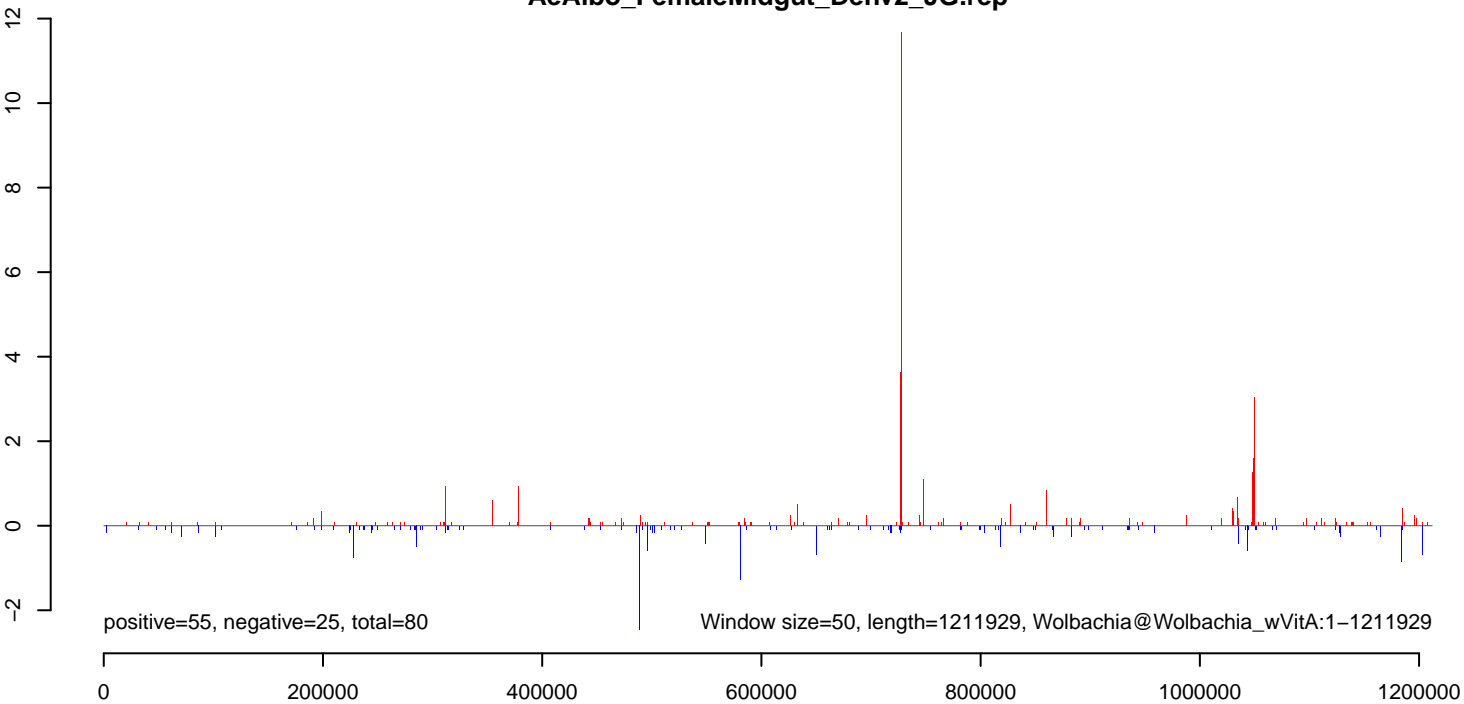
**AeAlbo\_FemaleMidgut\_Denv2\_JG.18\_23.rep**



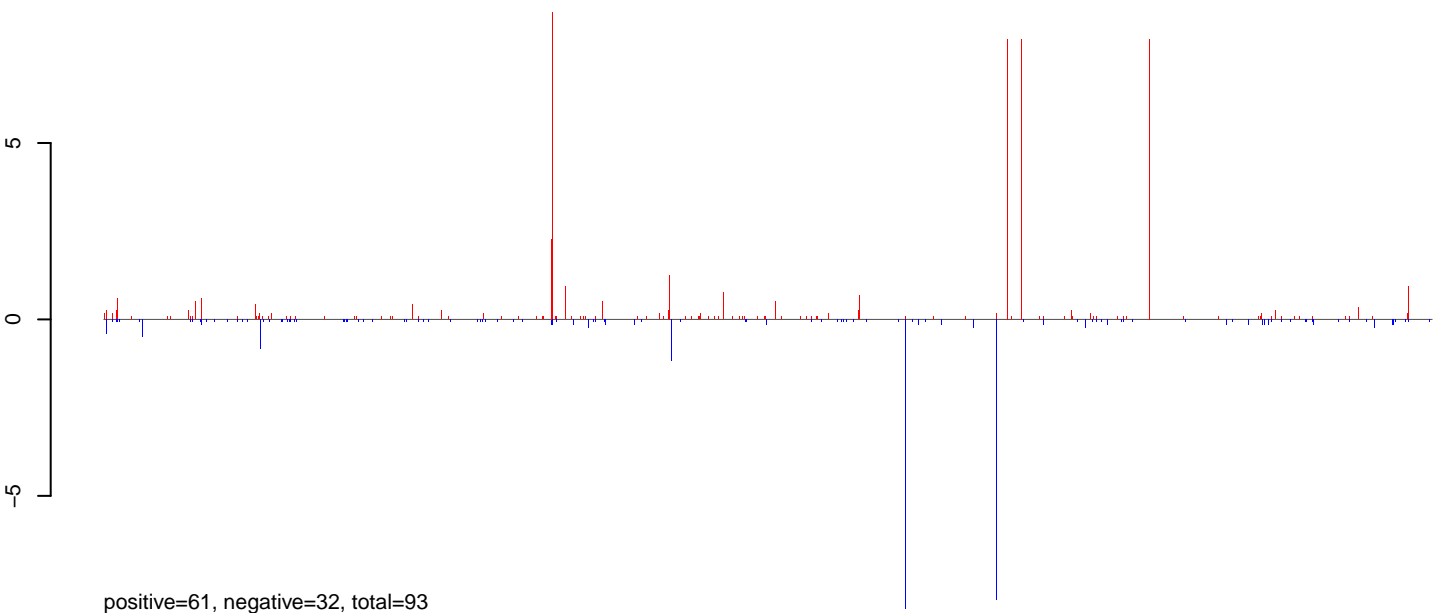
**AeAlbo\_FemaleMidgut\_Denv2\_JG.24\_35.rep**



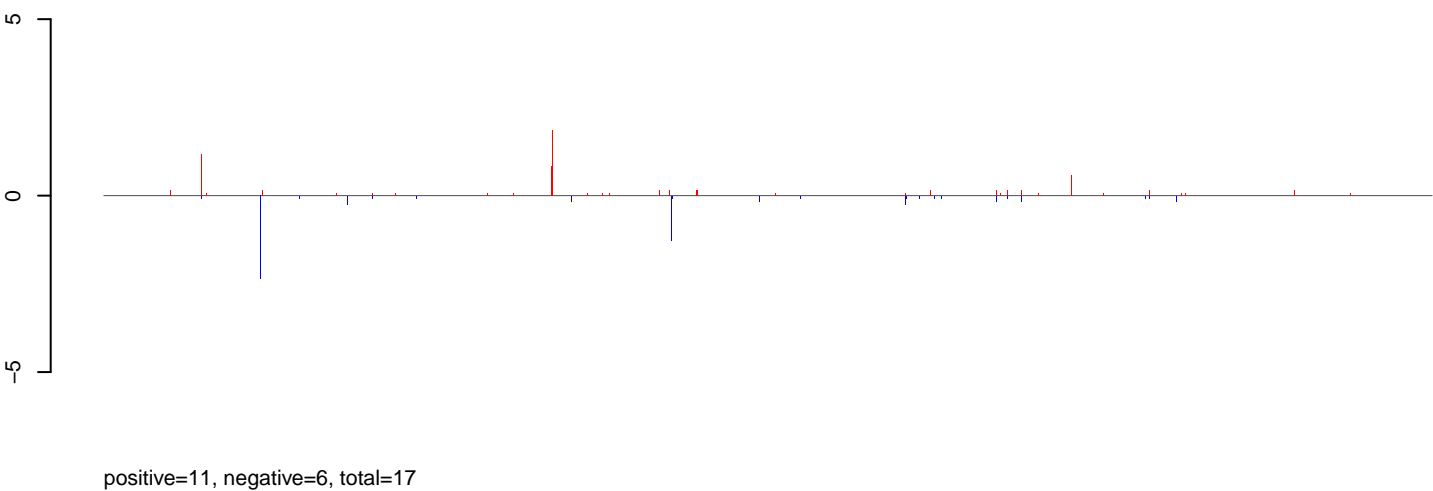
**AeAlbo\_FemaleMidgut\_Denv2\_JG.rep**



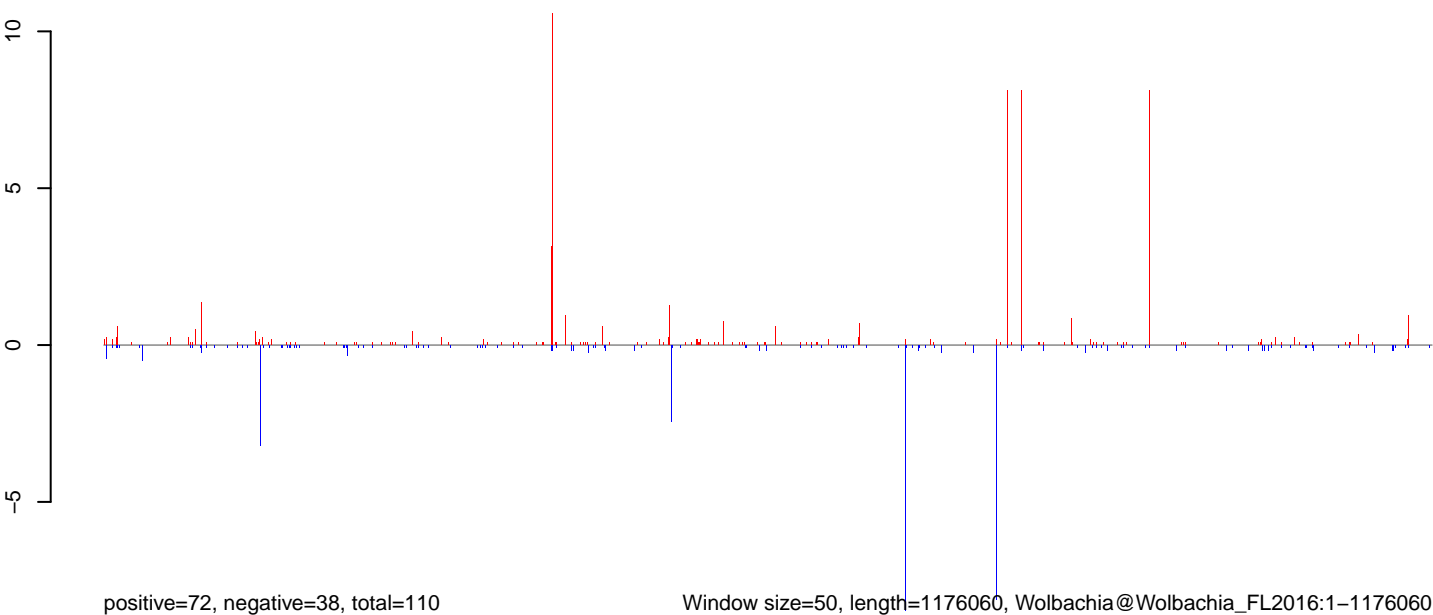
**AeAlbo\_FemaleMidgut\_Denv2\_JG.18\_23.rep**



**AeAlbo\_FemaleMidgut\_Denv2\_JG.24\_35.rep**



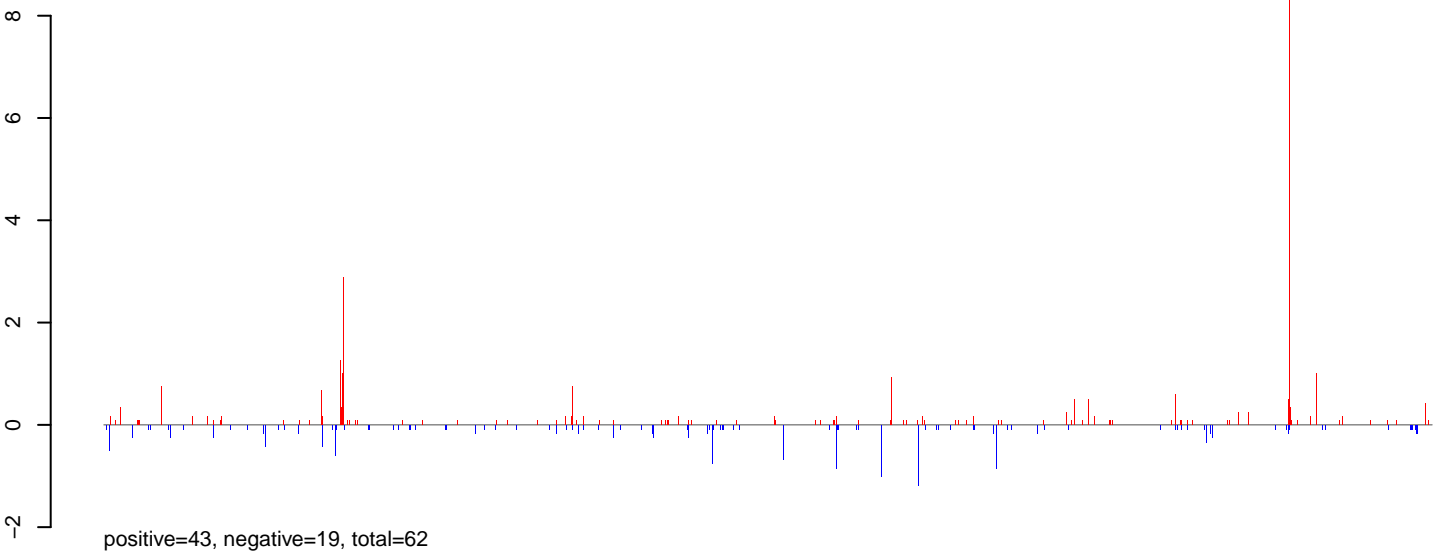
**AeAlbo\_FemaleMidgut\_Denv2\_JG.rep**



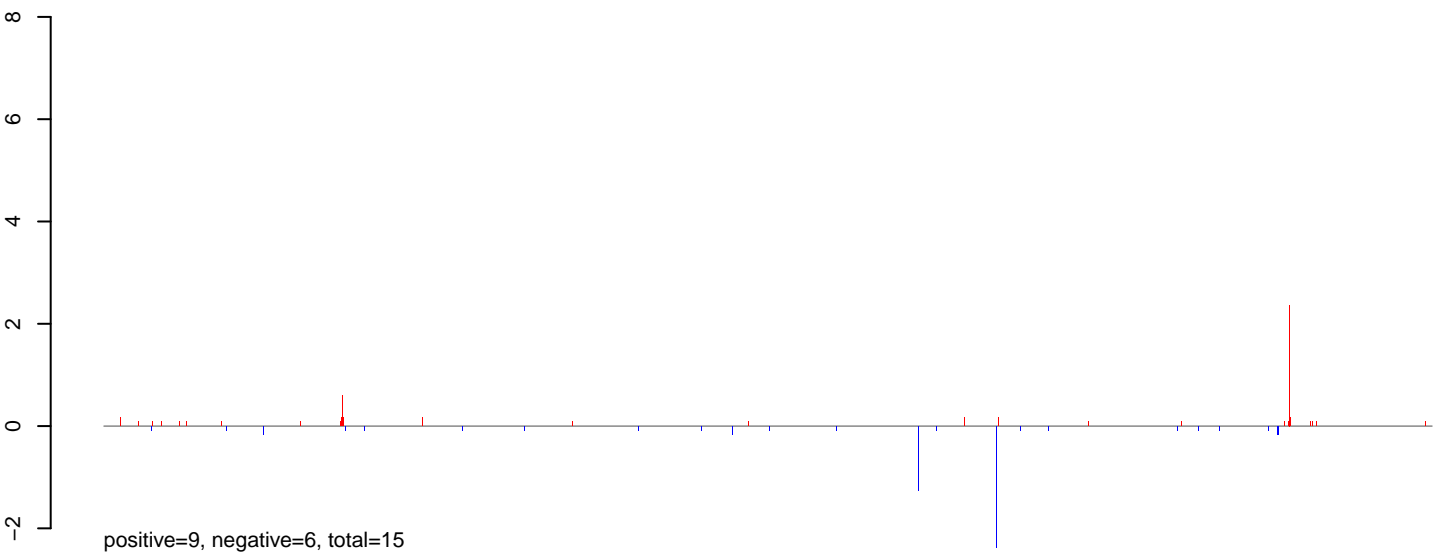
Window size=50, length=1176060, Wolbachia@Wolbachia\_FL2016:1-1176060

0 200000 400000 600000 800000 1000000 1200000

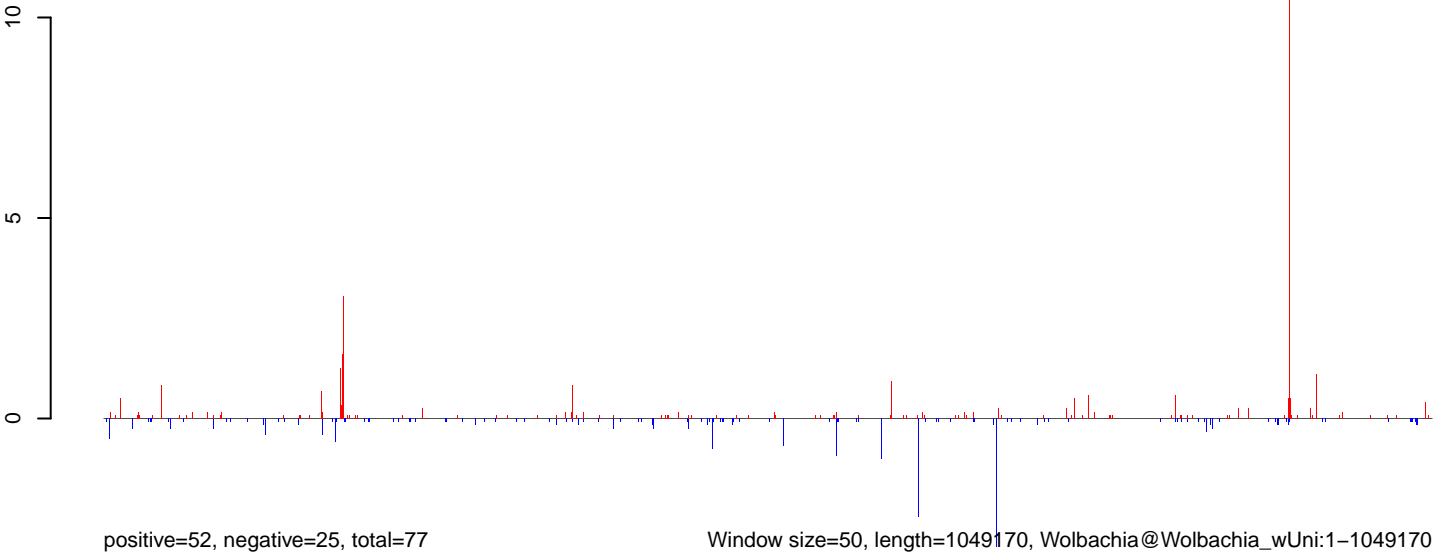
**AeAlbo\_FemaleMidgut\_Denv2\_JG.18\_23.rep**



**AeAlbo\_FemaleMidgut\_Denv2\_JG.24\_35.rep**

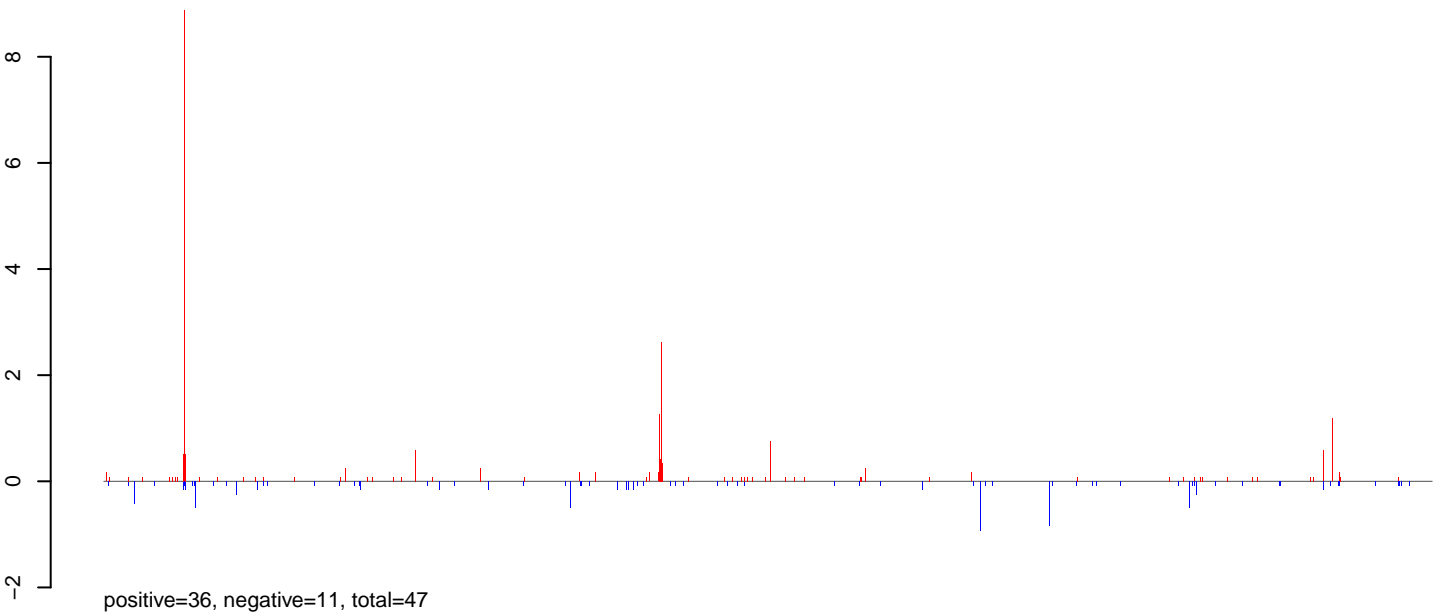


**AeAlbo\_FemaleMidgut\_Denv2\_JG.rep**

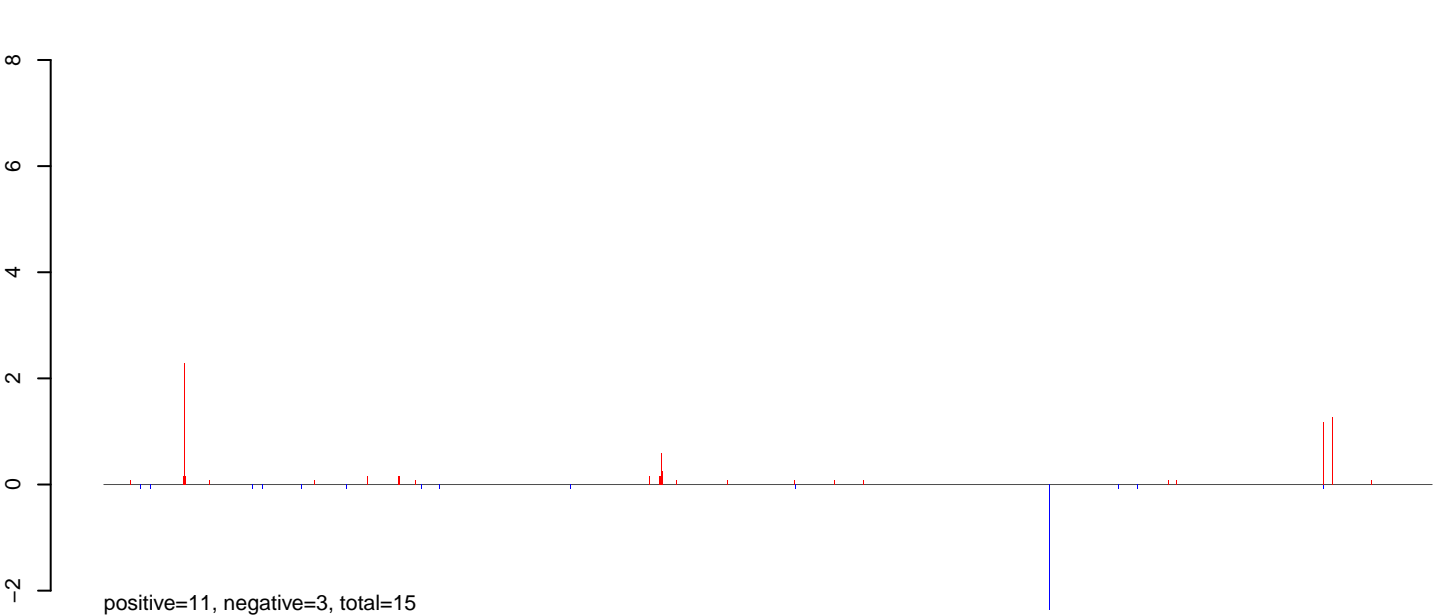


0e+00 2e+05 4e+05 6e+05 8e+05 1e+06

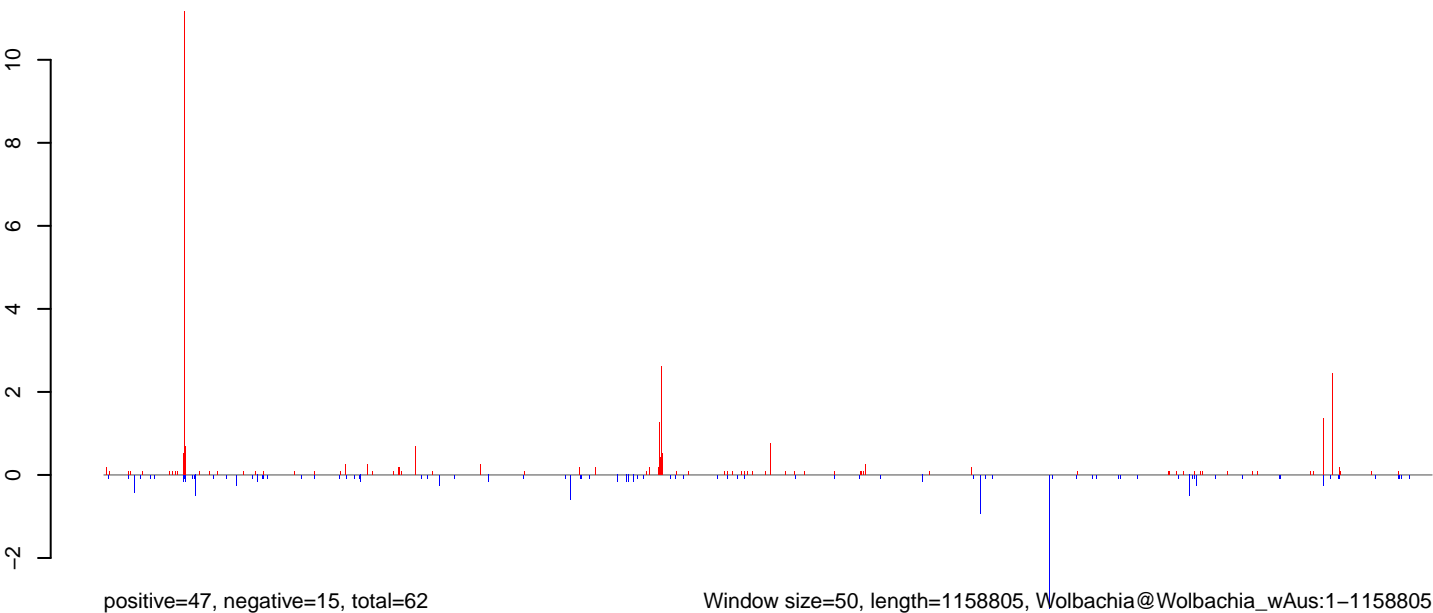
**AeAlbo\_FemaleMidgut\_Denv2\_JG.18\_23.rep**



**AeAlbo\_FemaleMidgut\_Denv2\_JG.24\_35.rep**



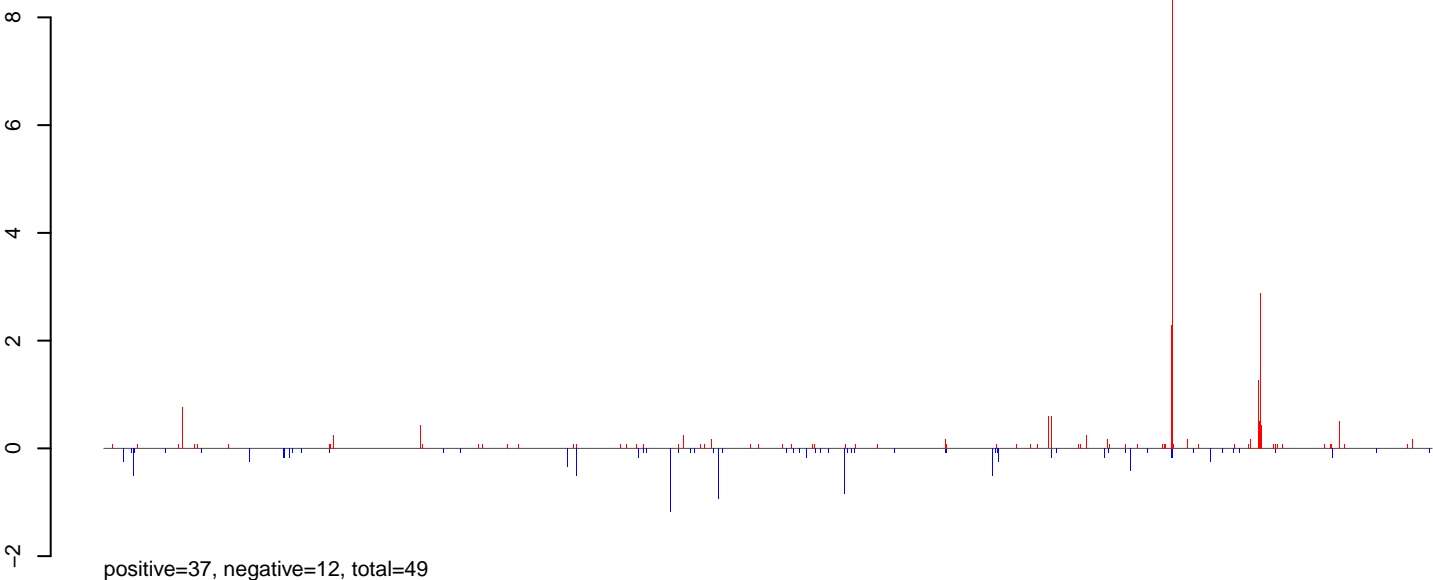
**AeAlbo\_FemaleMidgut\_Denv2\_JG.rep**



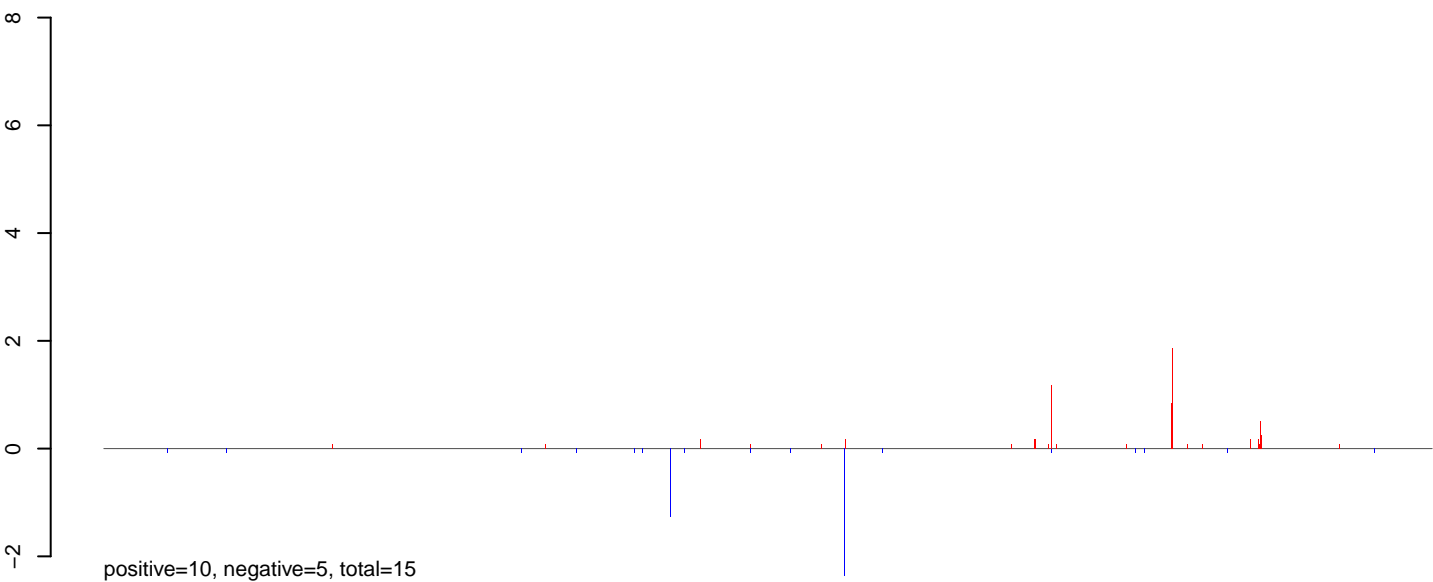
Window size=50, length=1158805, Wolbachia@Wolbachia\_wAus:1-1158805

0 200000 400000 600000 800000 1000000 1200000

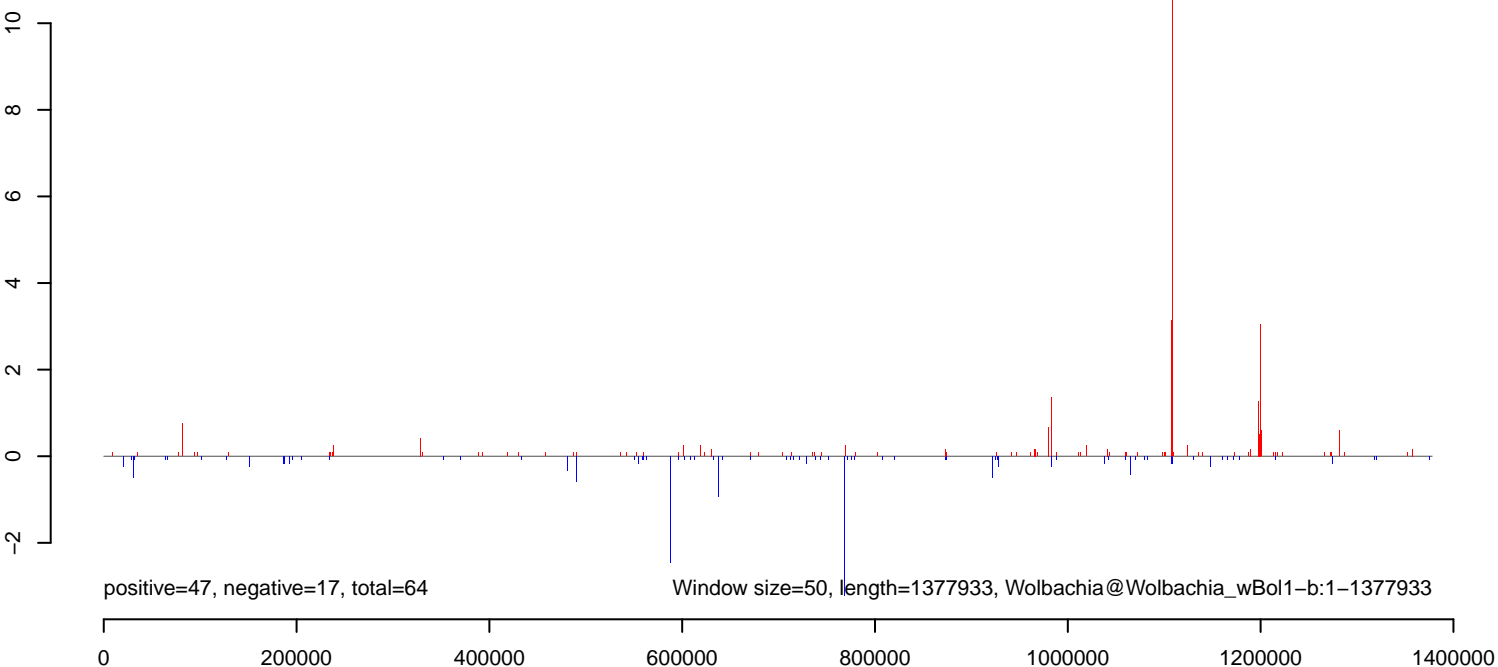
**AeAlbo\_FemaleMidgut\_Denv2\_JG.18\_23.rep**



**AeAlbo\_FemaleMidgut\_Denv2\_JG.24\_35.rep**

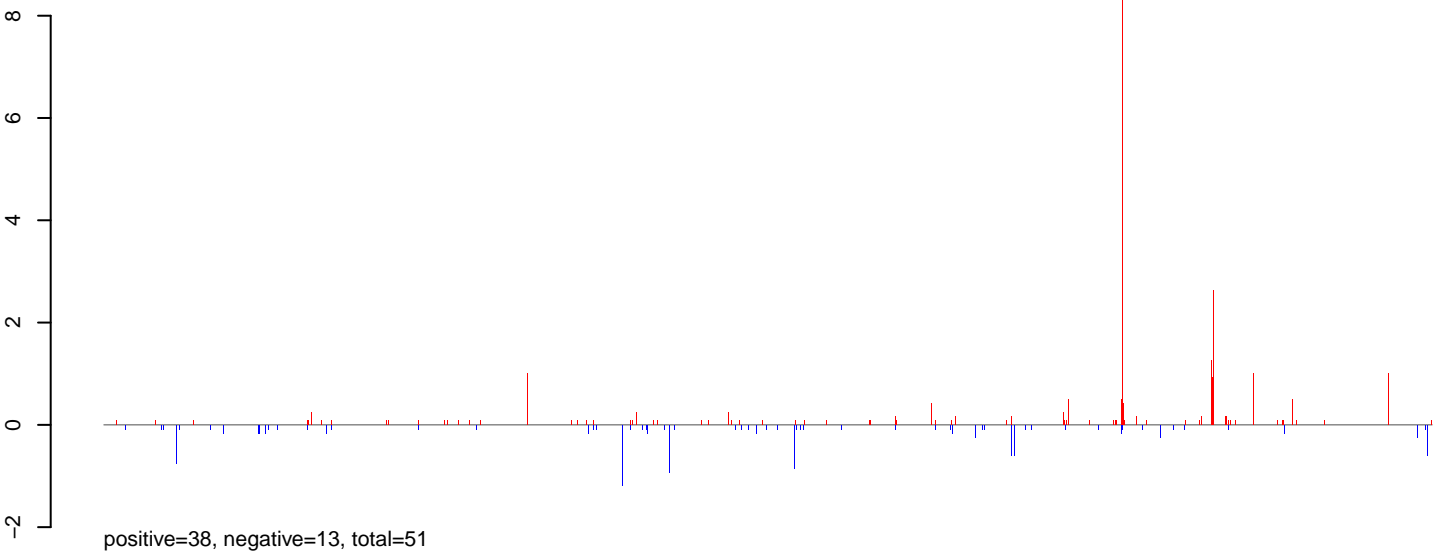


**AeAlbo\_FemaleMidgut\_Denv2\_JG.rep**

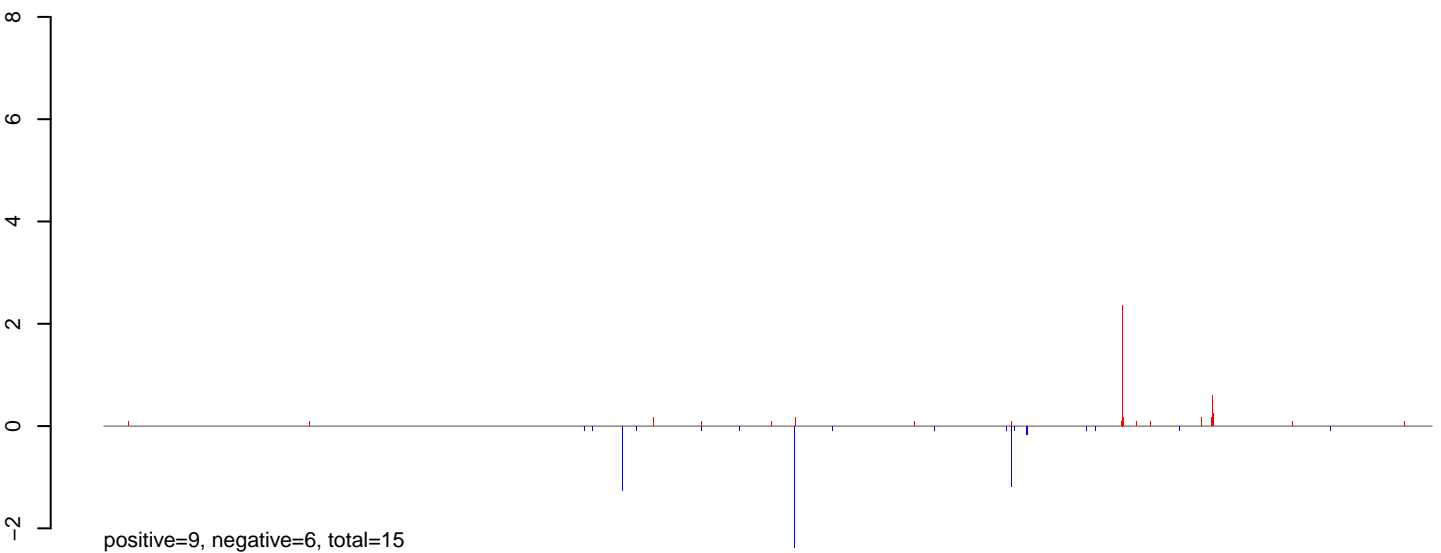




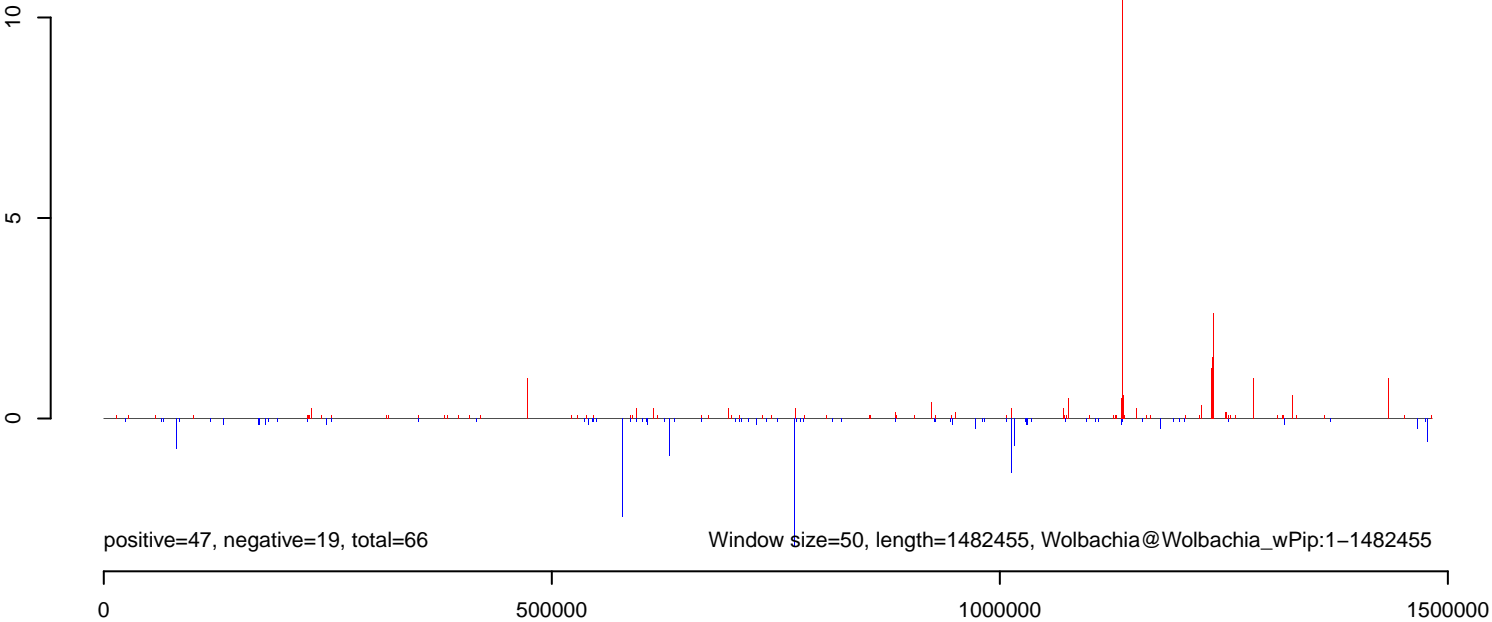
**AeAlbo\_FemaleMidgut\_Denv2\_JG.18\_23.rep**



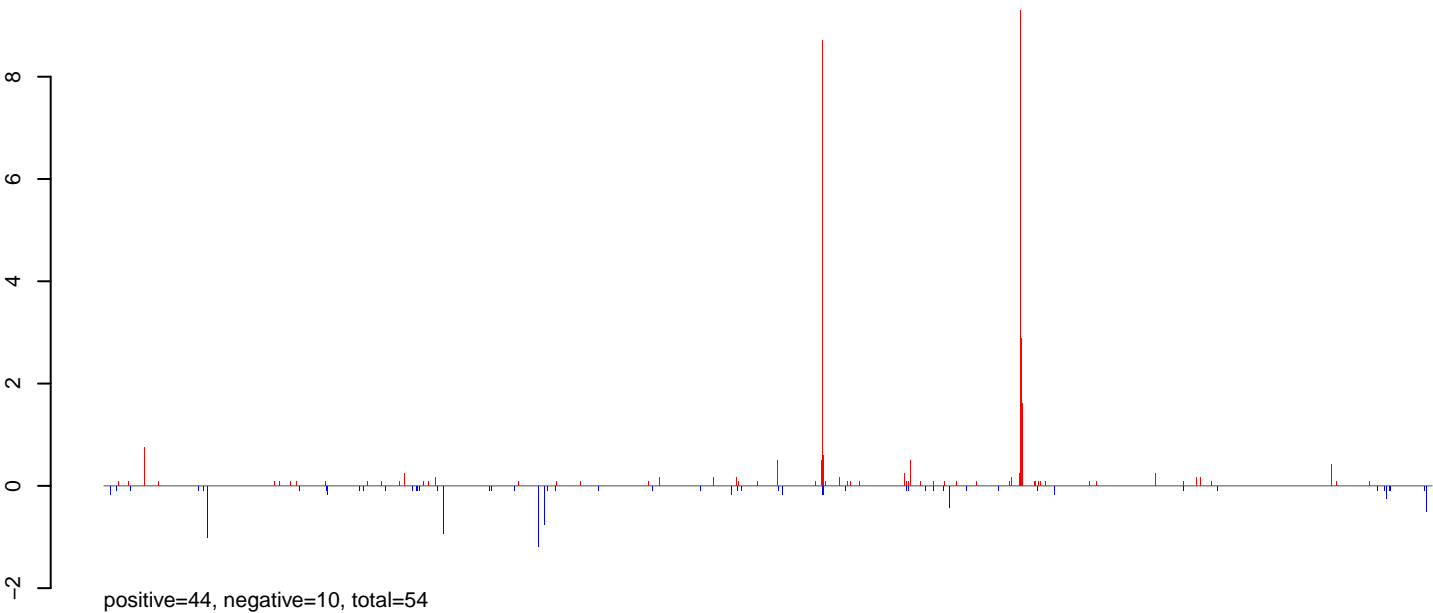
**AeAlbo\_FemaleMidgut\_Denv2\_JG.24\_35.rep**



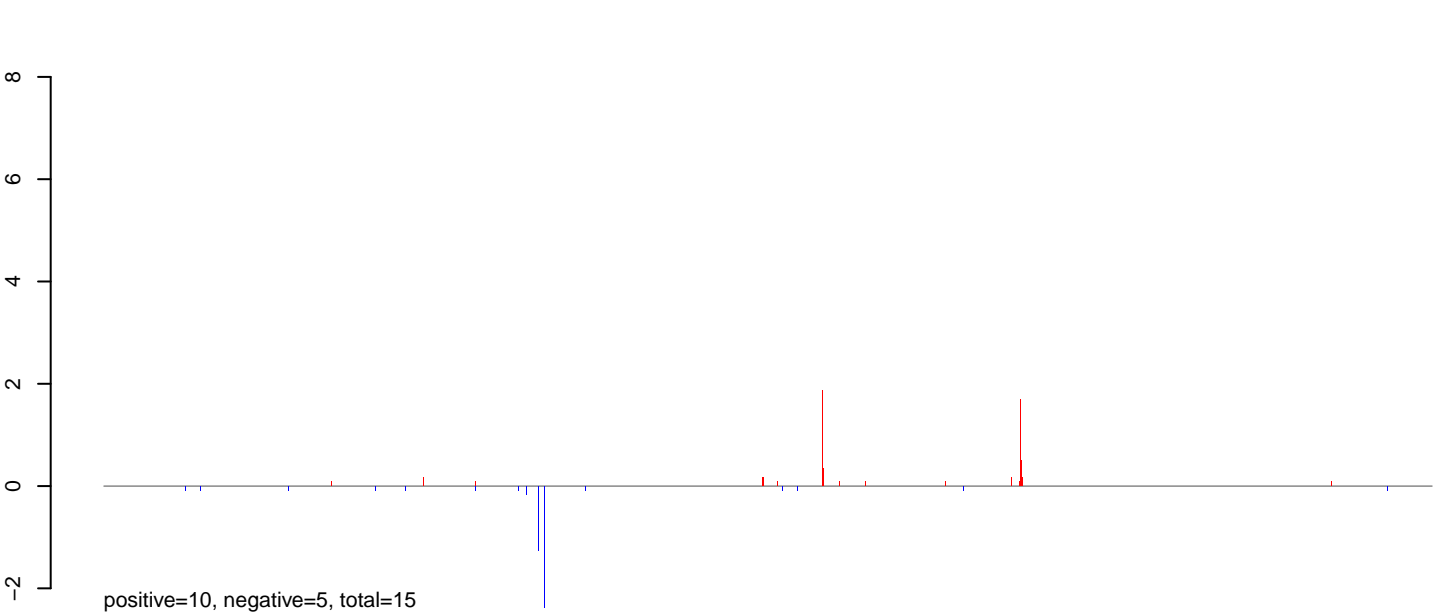
**AeAlbo\_FemaleMidgut\_Denv2\_JG.rep**



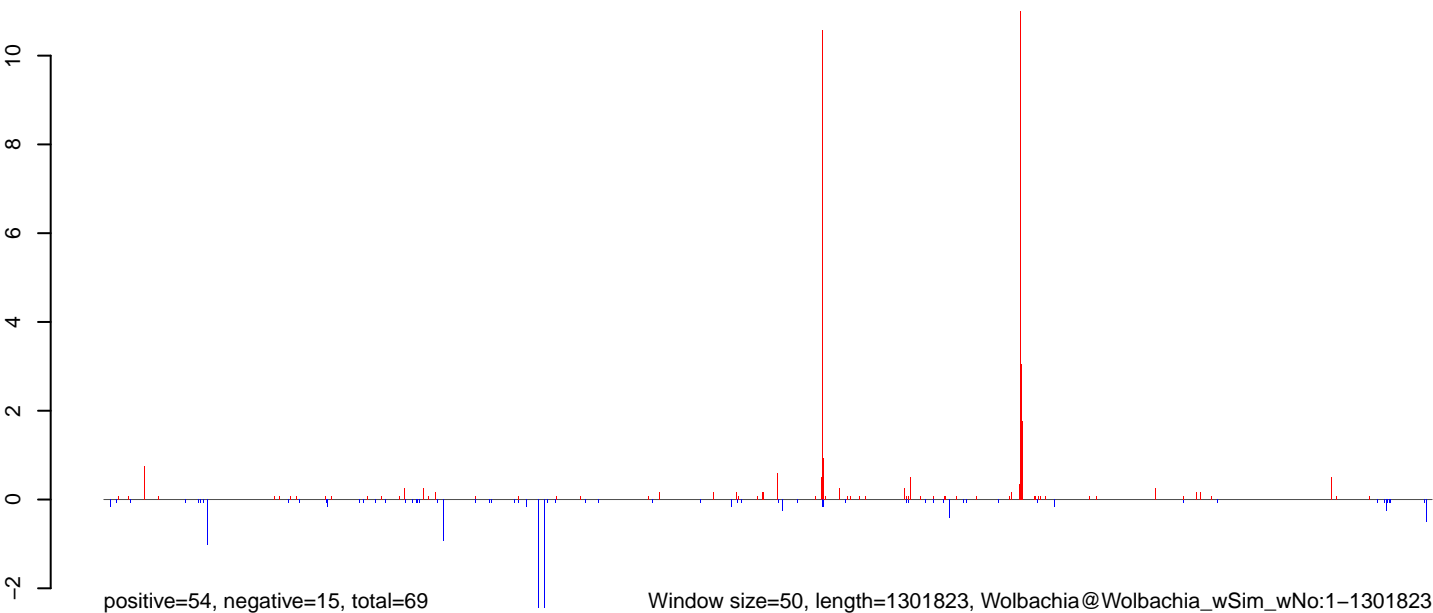
**AeAlbo\_FemaleMidgut\_Denv2\_JG.18\_23.rep**



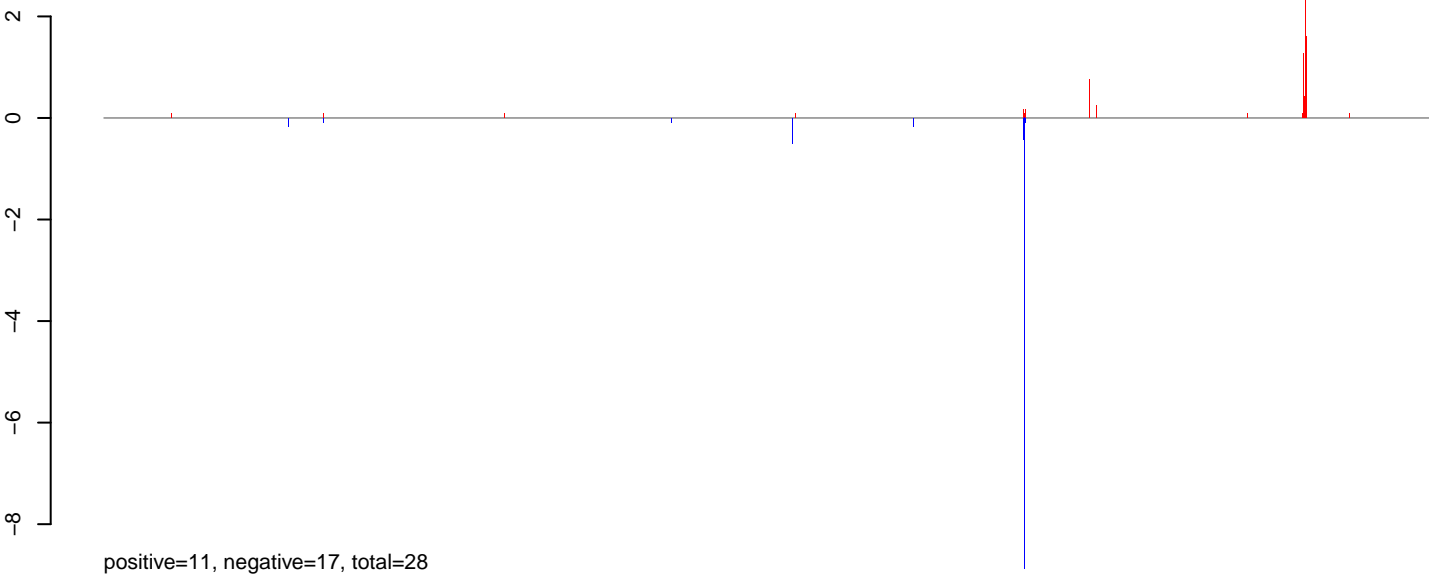
**AeAlbo\_FemaleMidgut\_Denv2\_JG.24\_35.rep**



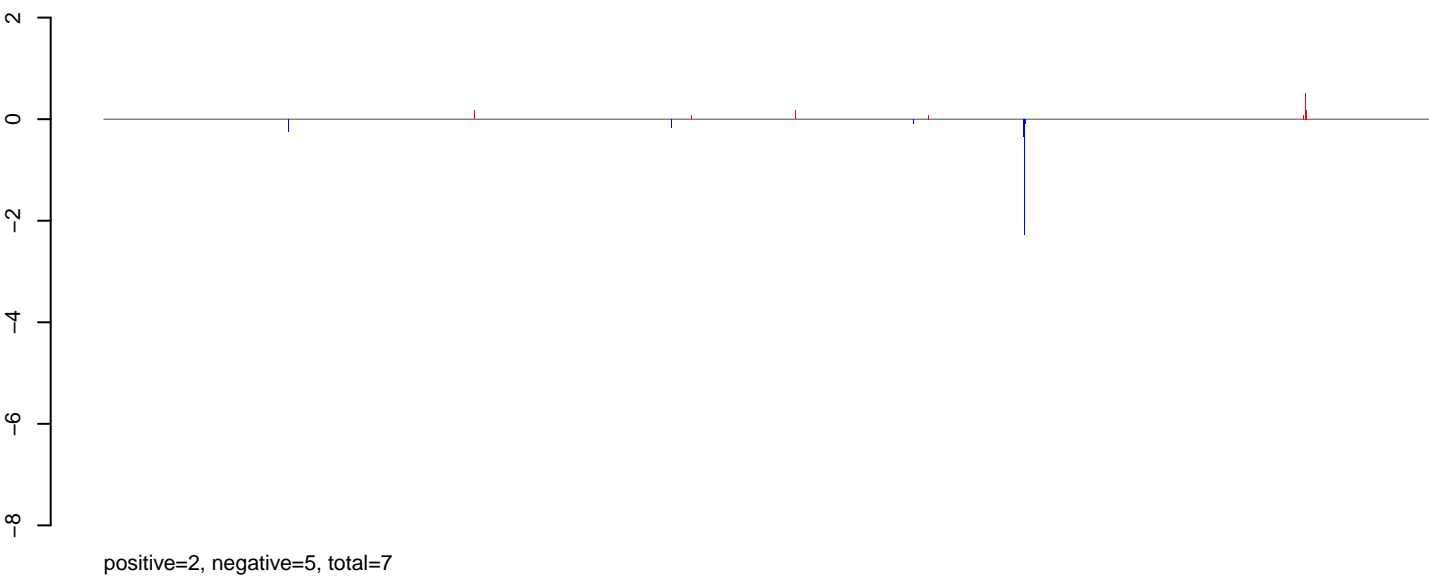
**AeAlbo\_FemaleMidgut\_Denv2\_JG.rep**



**AeAlbo\_FemaleMidgut\_Denv2\_JG.18\_23.rep**



**AeAlbo\_FemaleMidgut\_Denv2\_JG.24\_35.rep**



**AeAlbo\_FemaleMidgut\_Denv2\_JG.rep**

