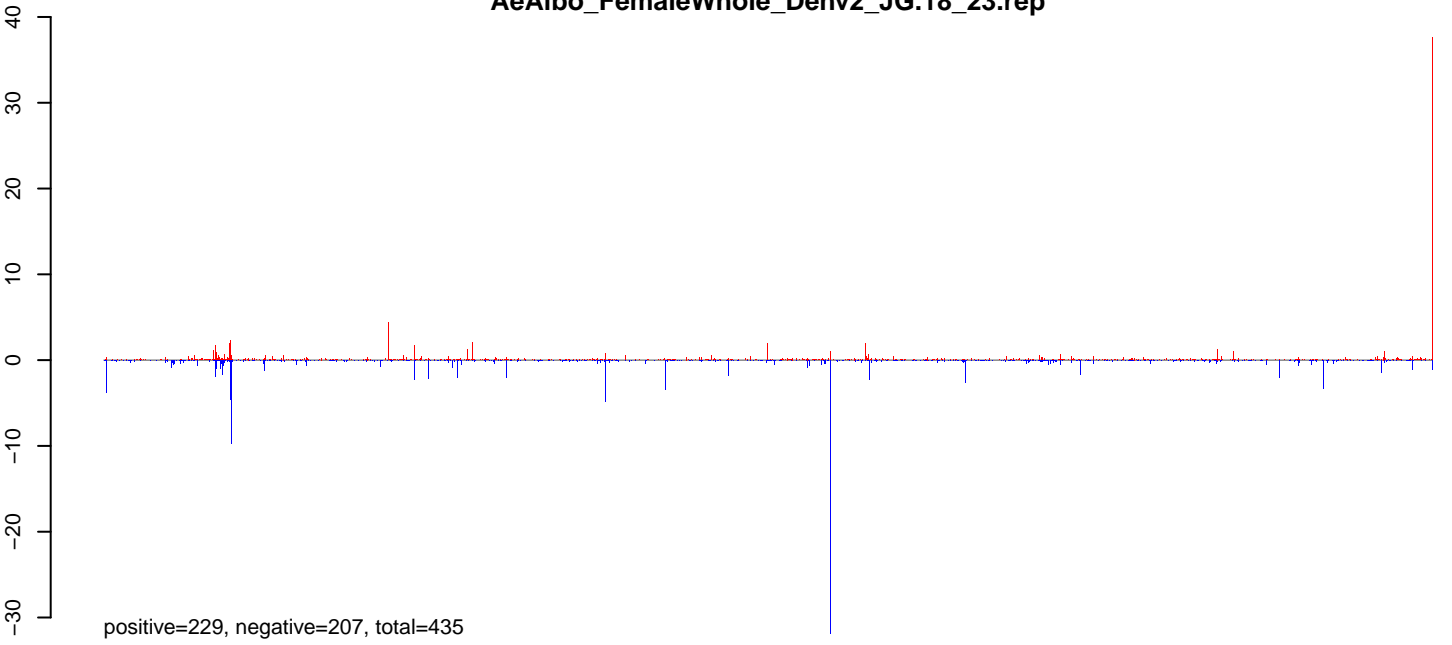
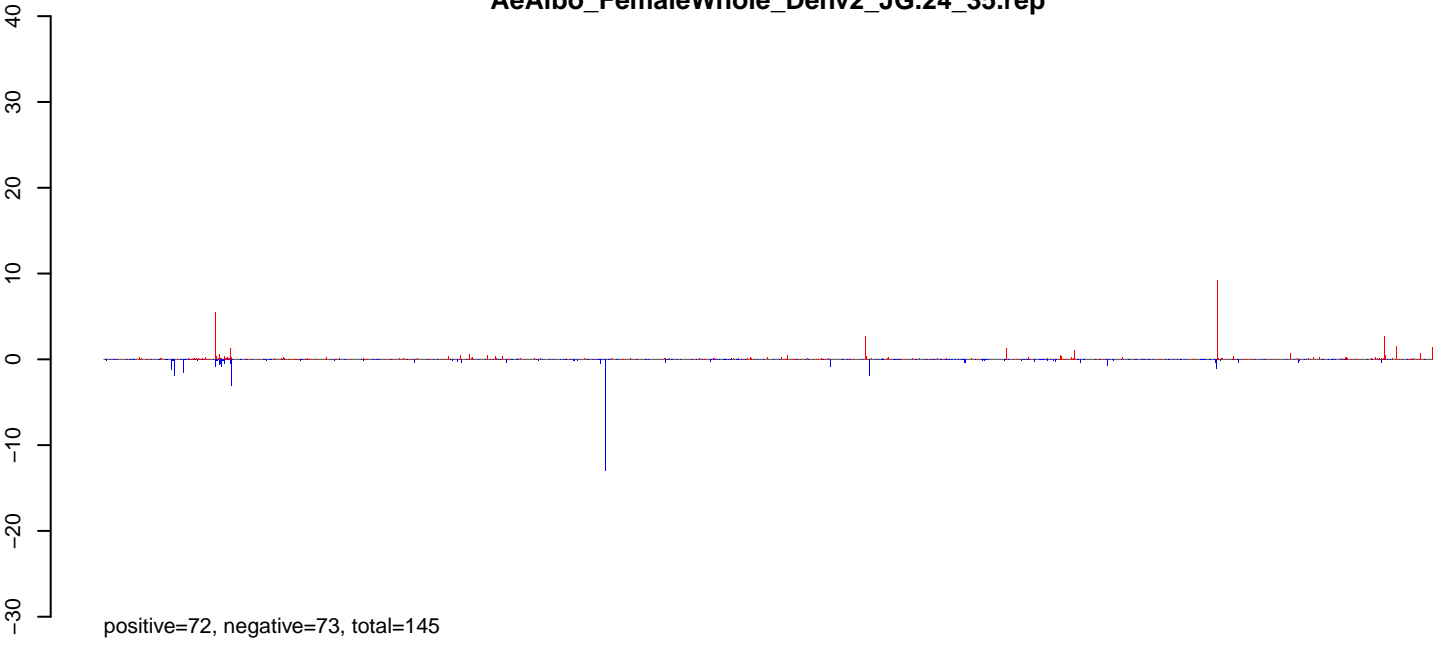


AeAlbo_FemaleWhole_Denv2_JG.18_23.rep



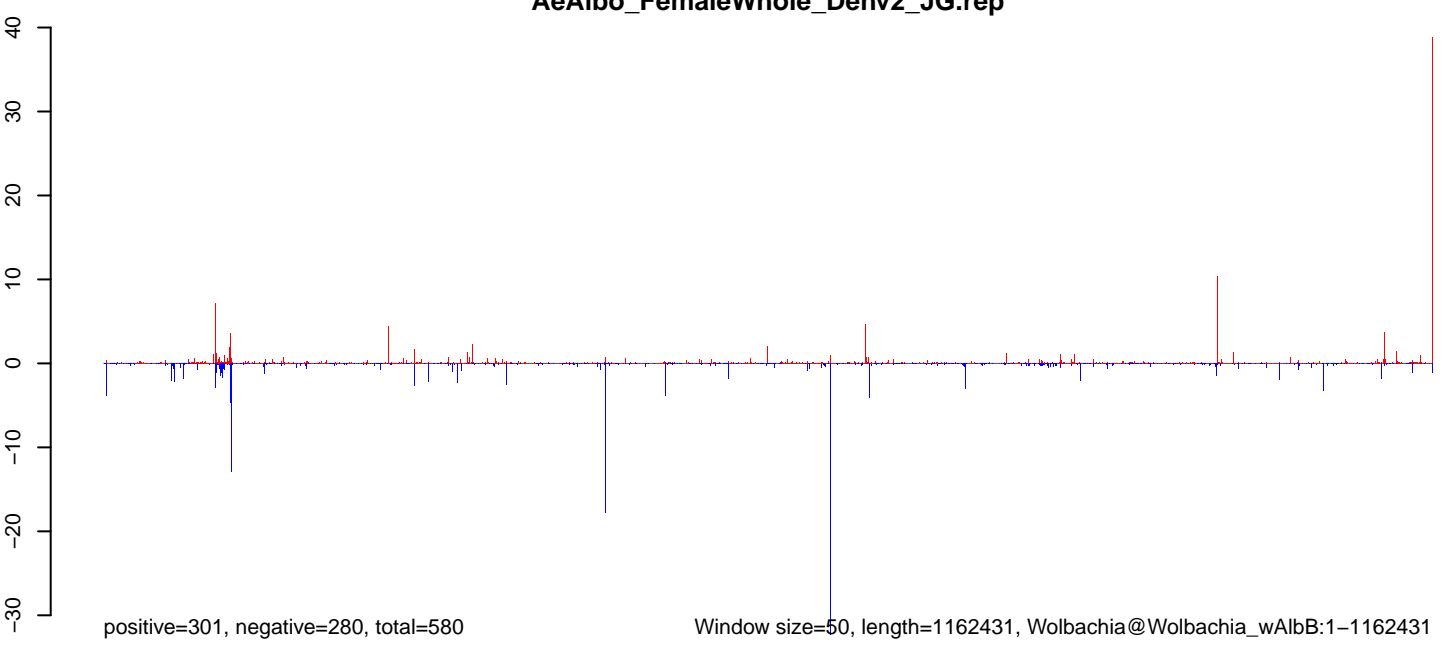
positive=229, negative=207, total=435

AeAlbo_FemaleWhole_Denv2_JG.24_35.rep



positive=72, negative=73, total=145

AeAlbo_FemaleWhole_Denv2_JG.rep

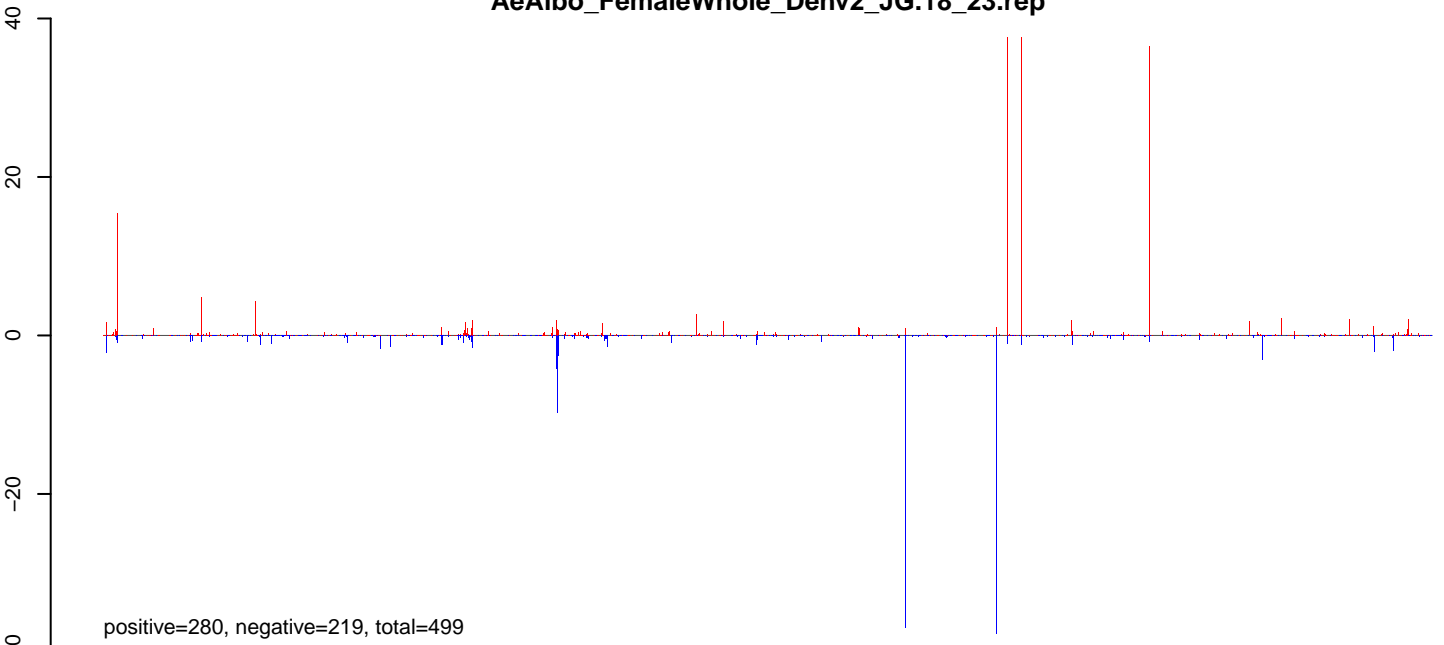


positive=301, negative=280, total=580

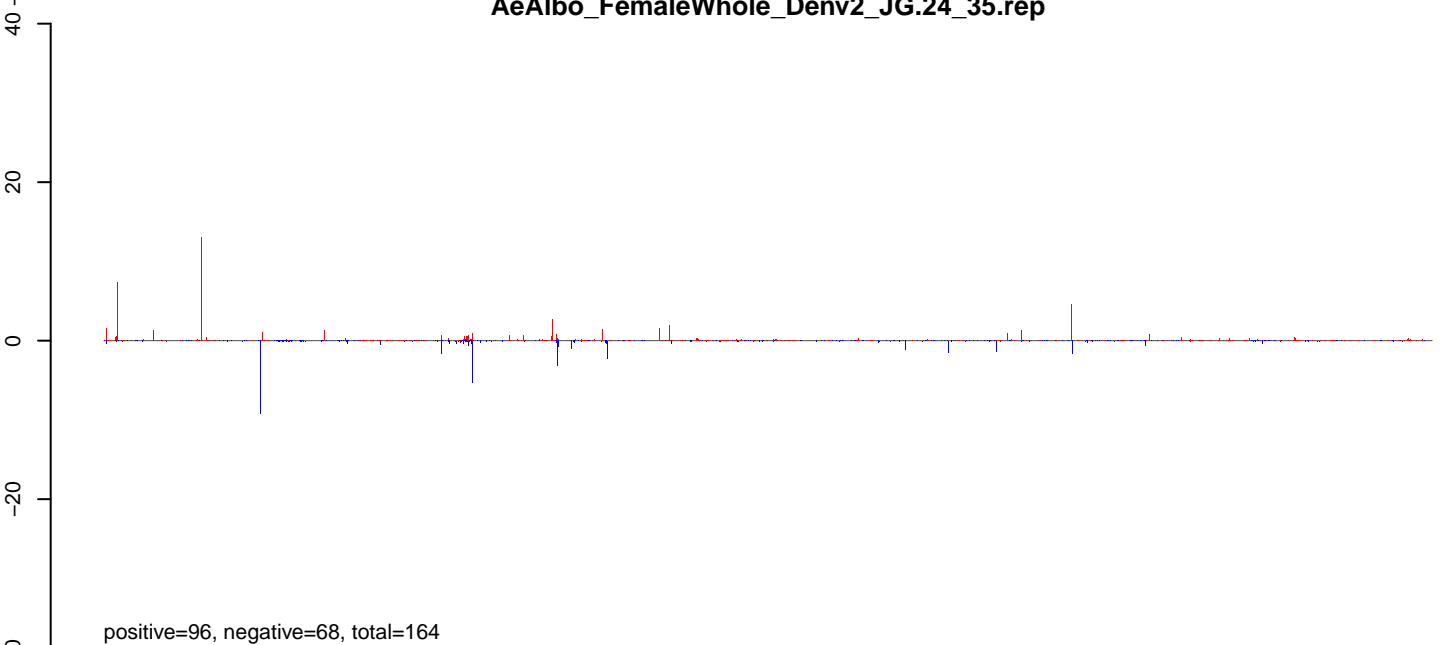
Window size=50, length=1162431, Wolbachia@Wolbachia_wAlbB:1-1162431

0 200000 400000 600000 800000 1000000 1200000

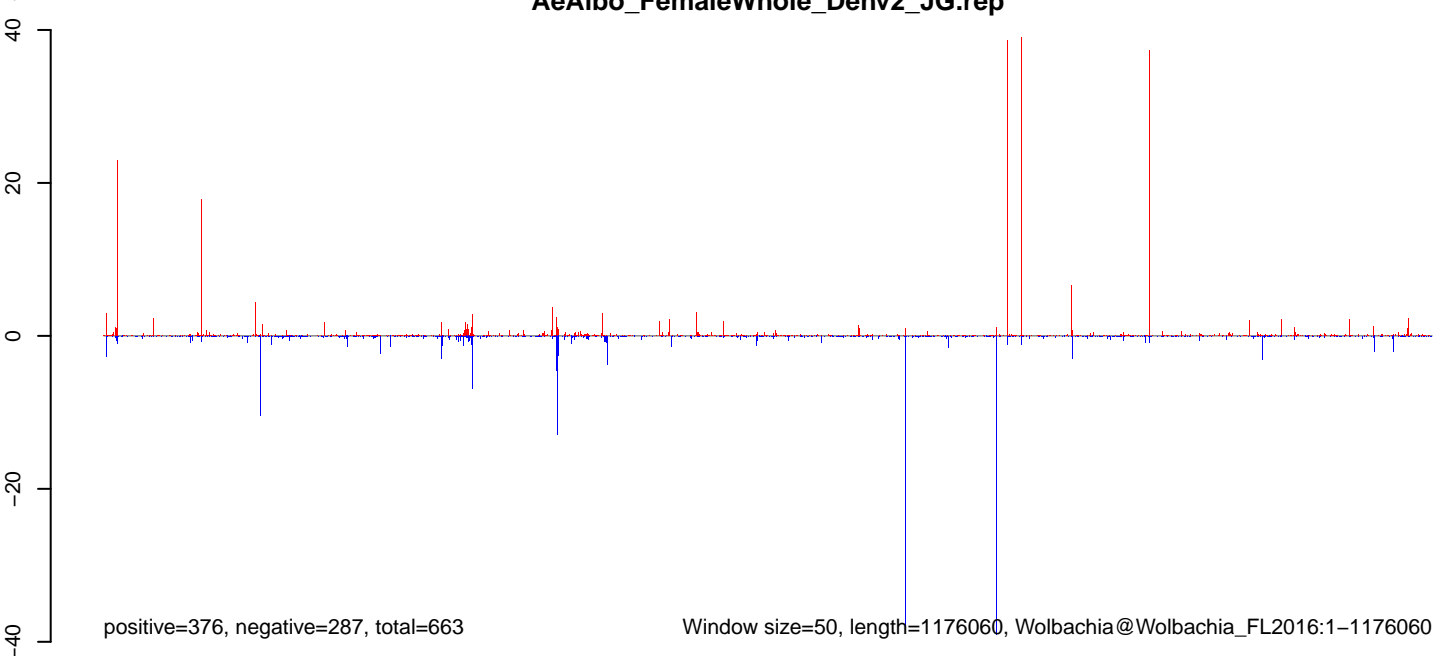
AeAlbo_FemaleWhole_Denv2_JG.18_23.rep



AeAlbo_FemaleWhole_Denv2_JG.24_35.rep



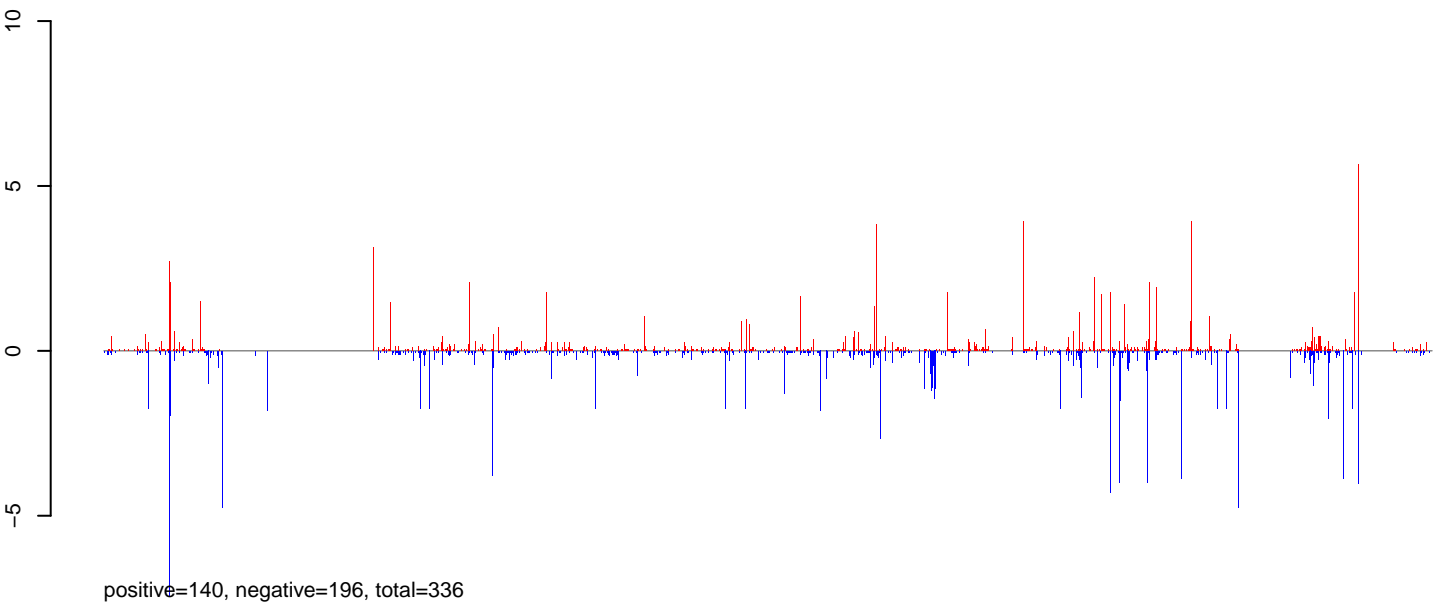
AeAlbo_FemaleWhole_Denv2_JG.rep



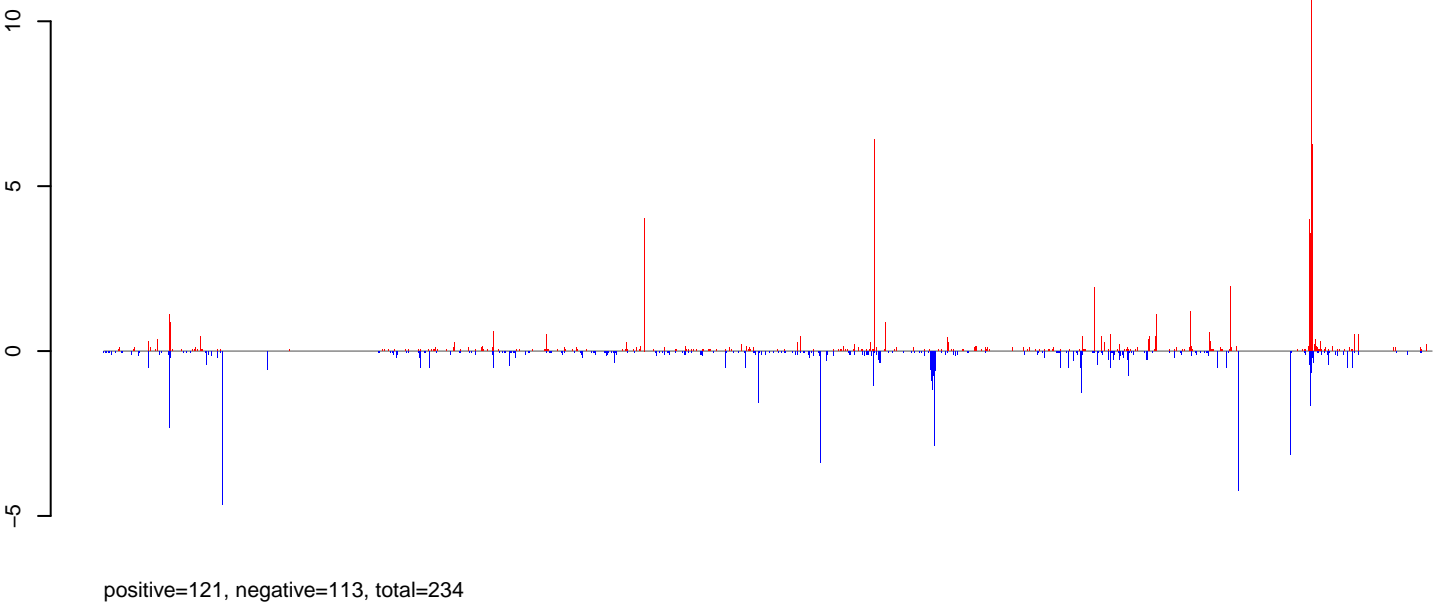
Window size=50, length=1176060, Wolbachia@Wolbachia_FL2016:1-1176060

0 200000 400000 600000 800000 1000000 1200000

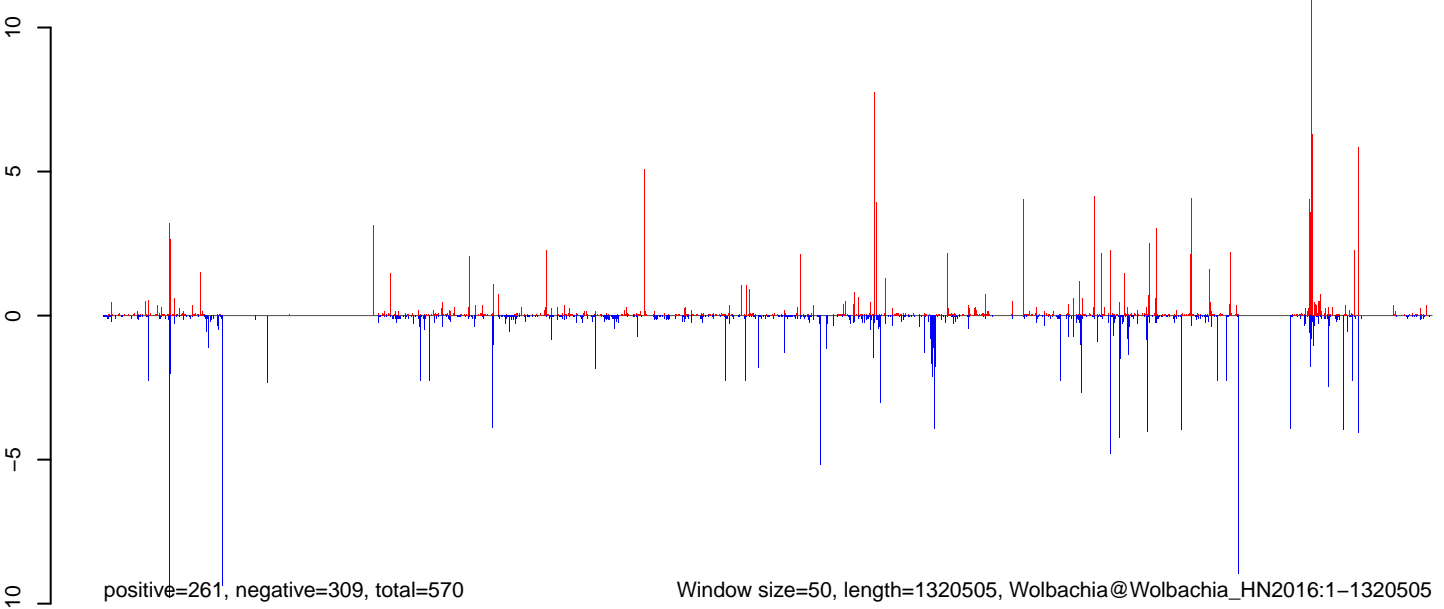
AeAlbo_FemaleWhole_Denv2_JG.18_23.rep



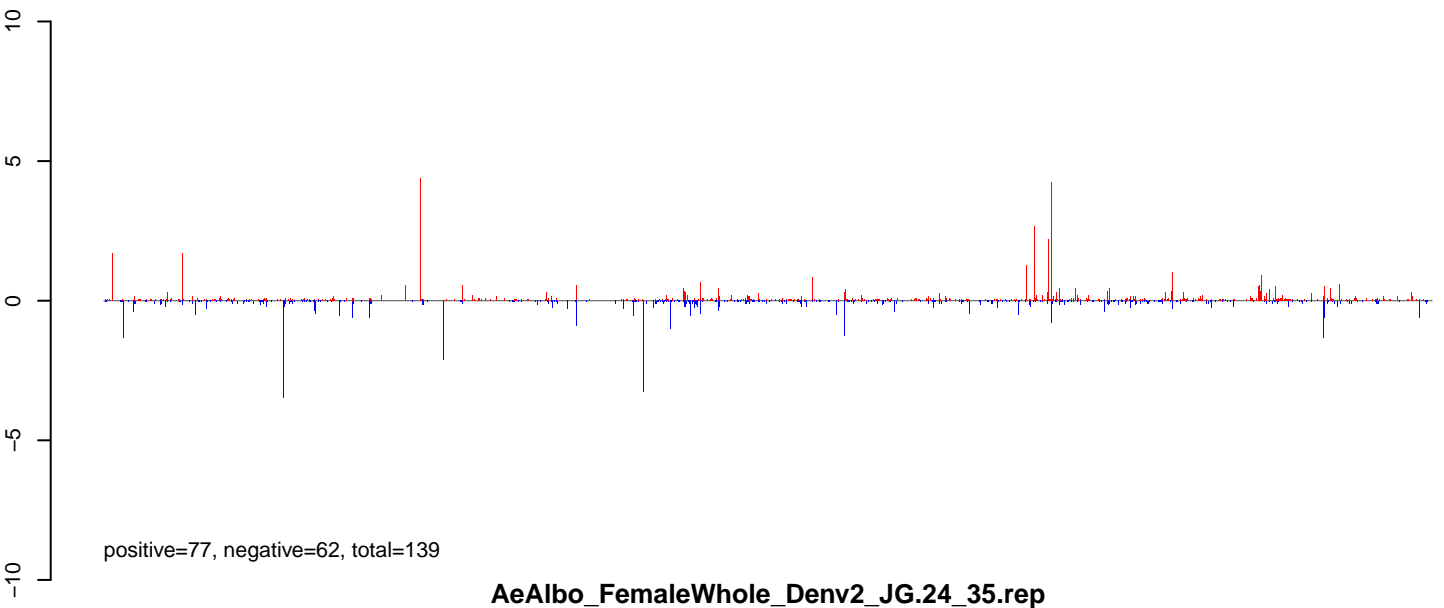
AeAlbo_FemaleWhole_Denv2_JG.24_35.rep



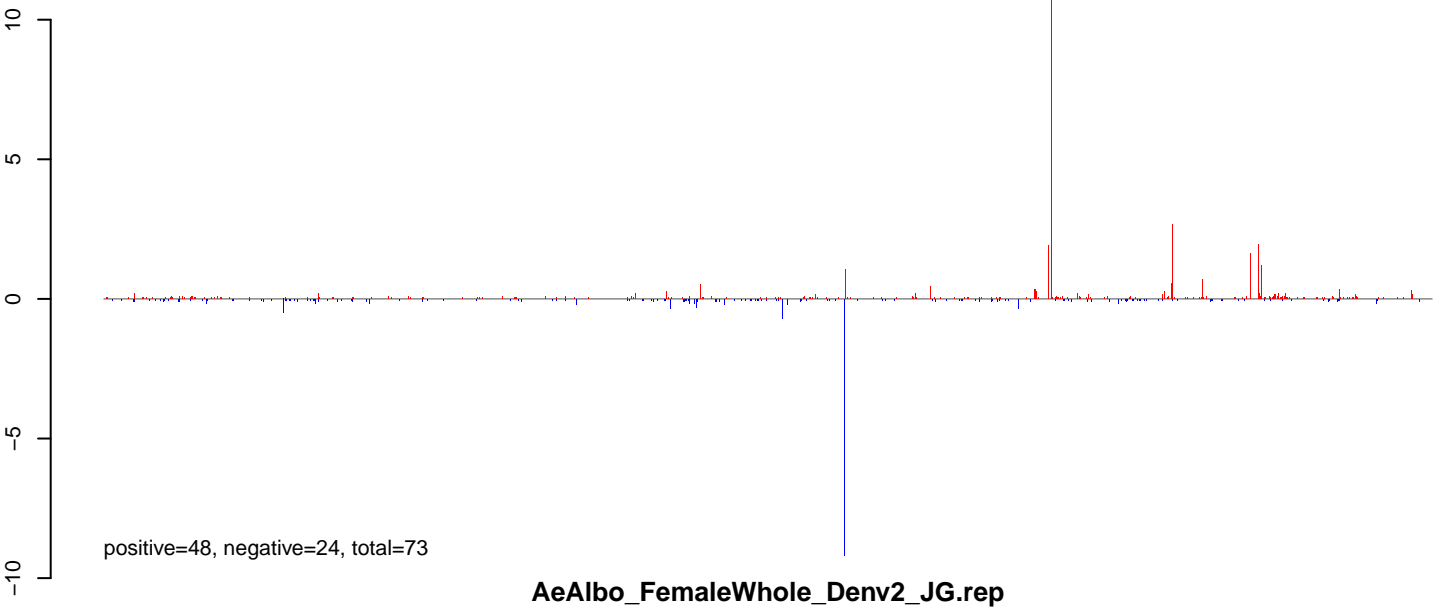
AeAlbo_FemaleWhole_Denv2_JG.rep



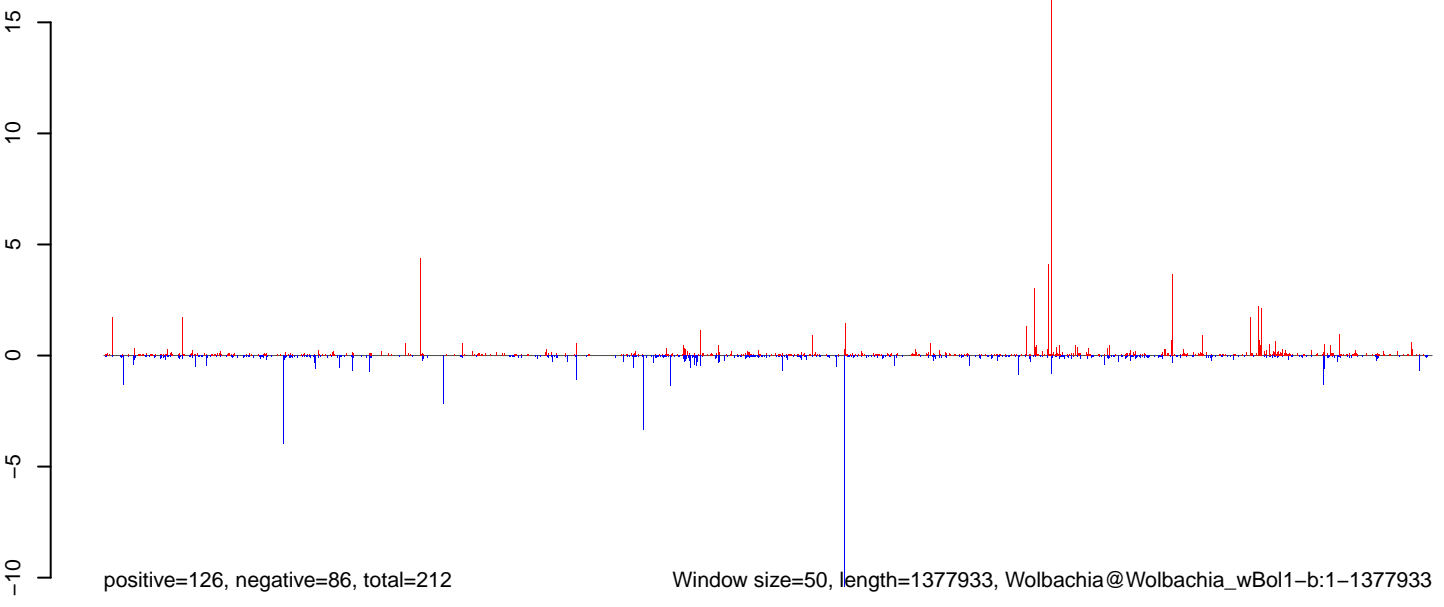
AeAlbo_FemaleWhole_Denv2_JG.18_23.rep



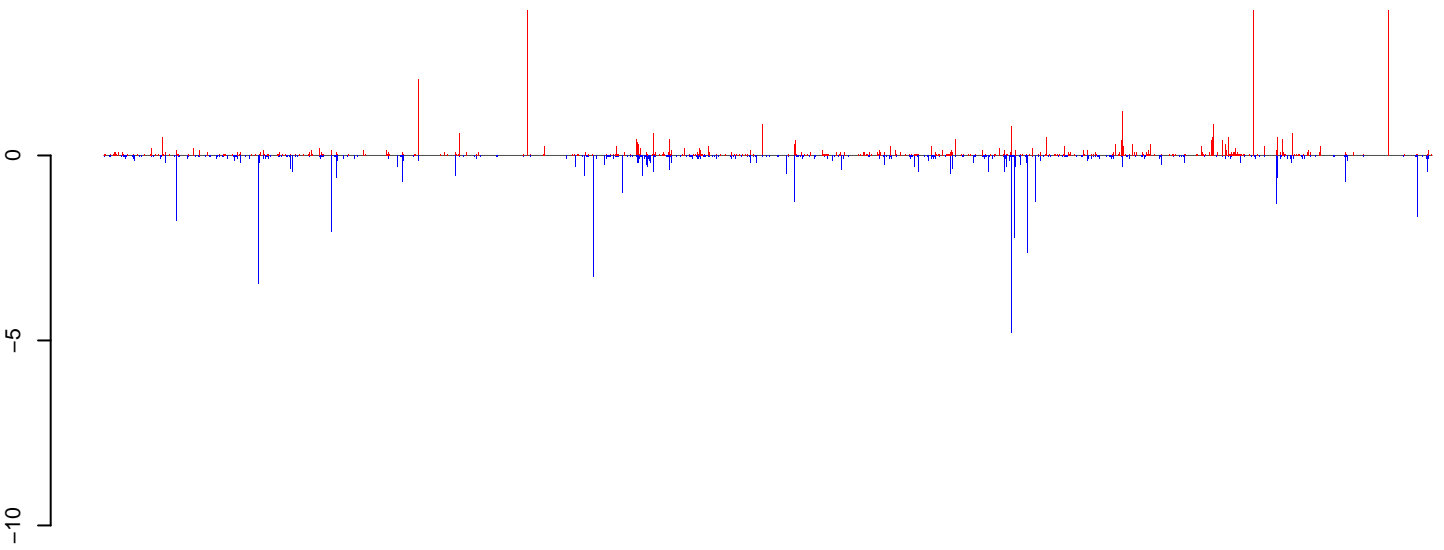
AeAlbo_FemaleWhole_Denv2_JG.24_35.rep



AeAlbo_FemaleWhole_Denv2_JG.rep

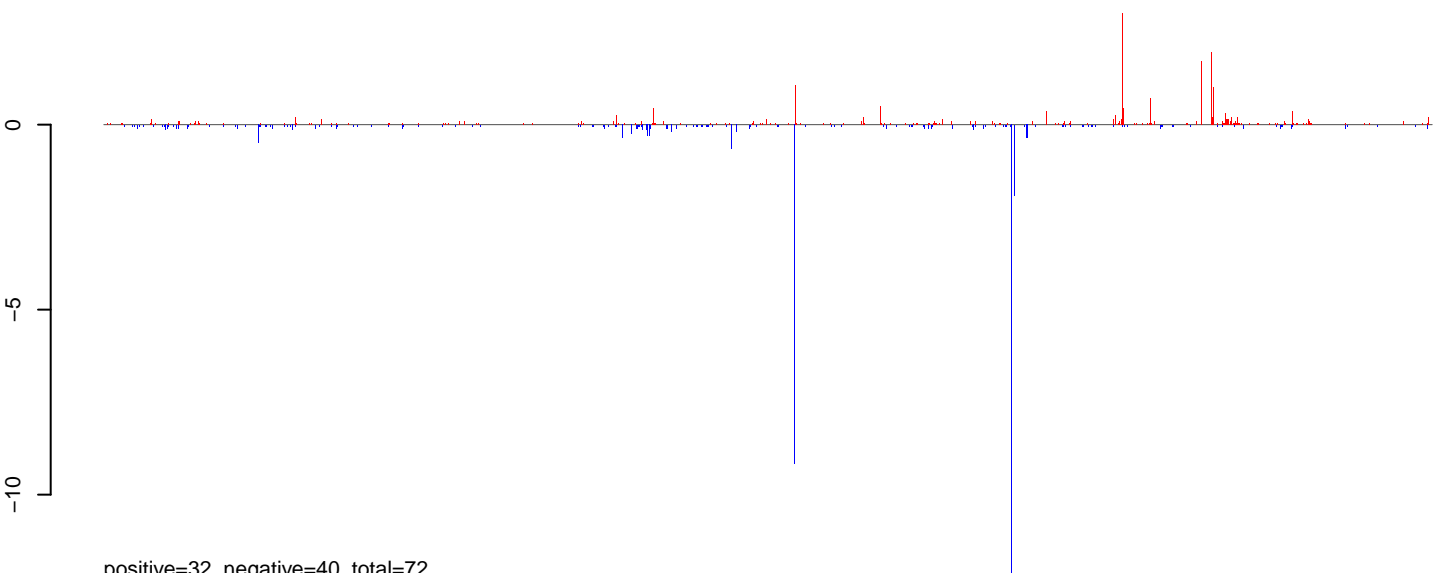


AeAlbo_FemaleWhole_Denv2_JG.18_23.rep



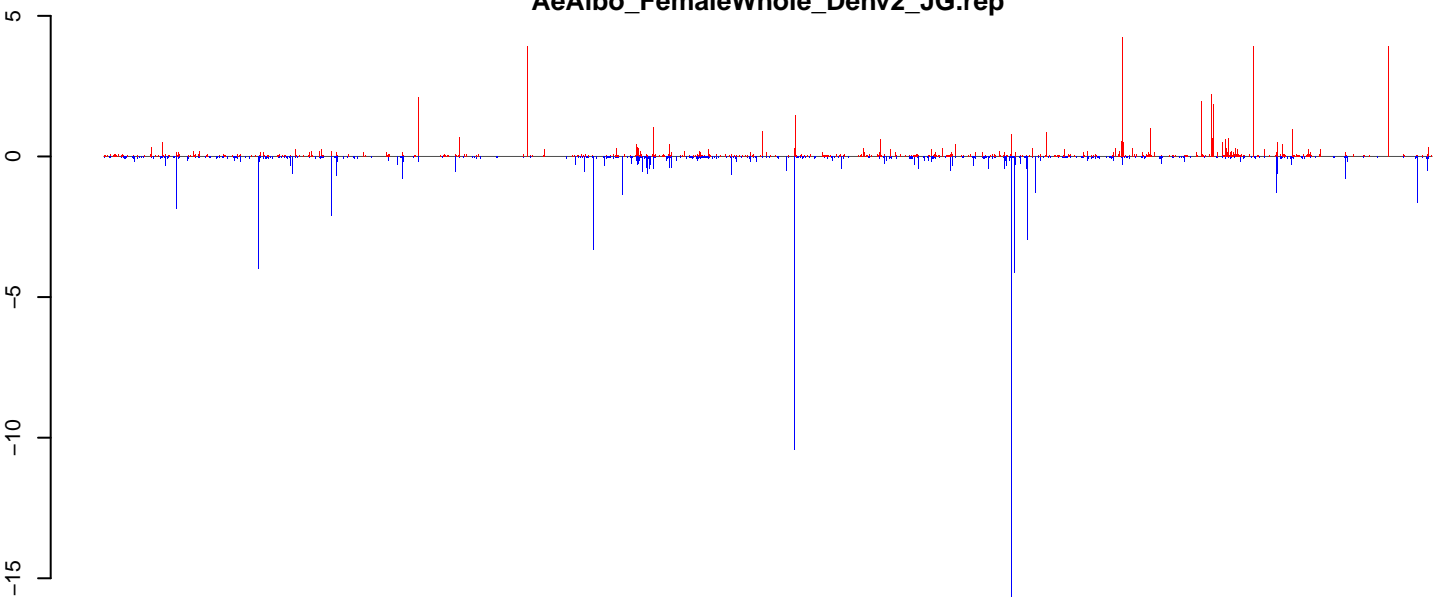
positive=68, negative=73, total=142

AeAlbo_FemaleWhole_Denv2_JG.24_35.rep



positive=32, negative=40, total=72

AeAlbo_FemaleWhole_Denv2_JG.rep

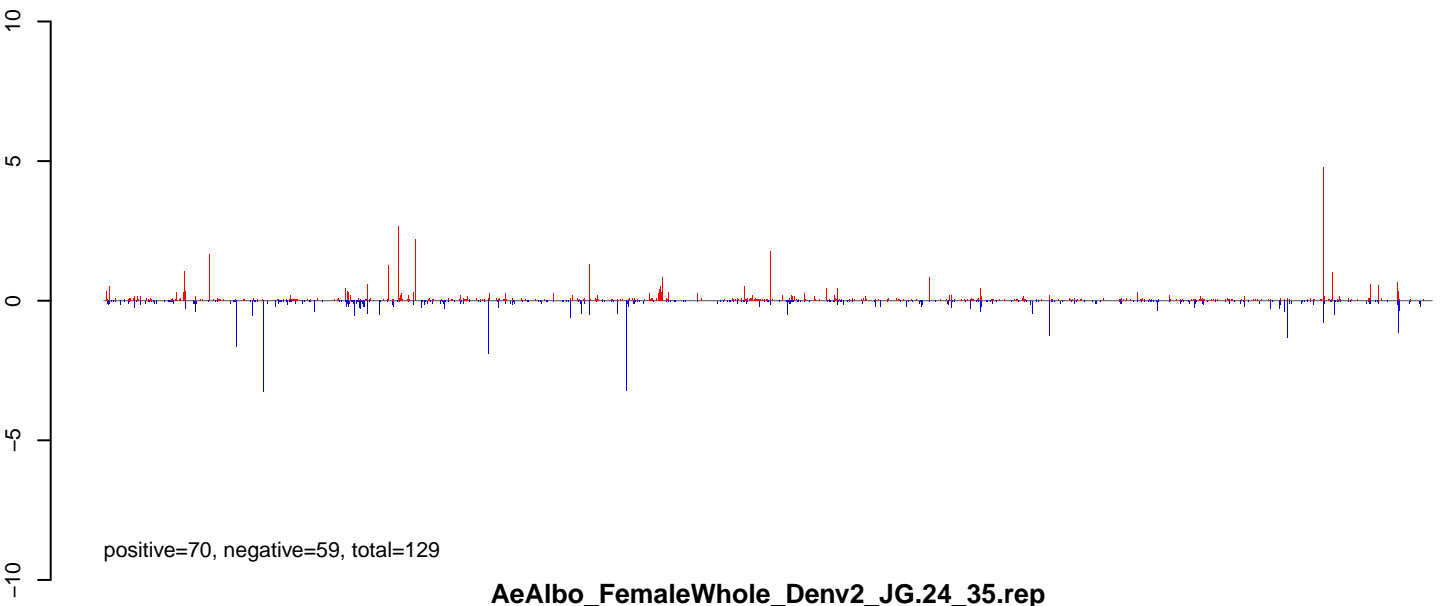


positive=100, negative=114, total=214

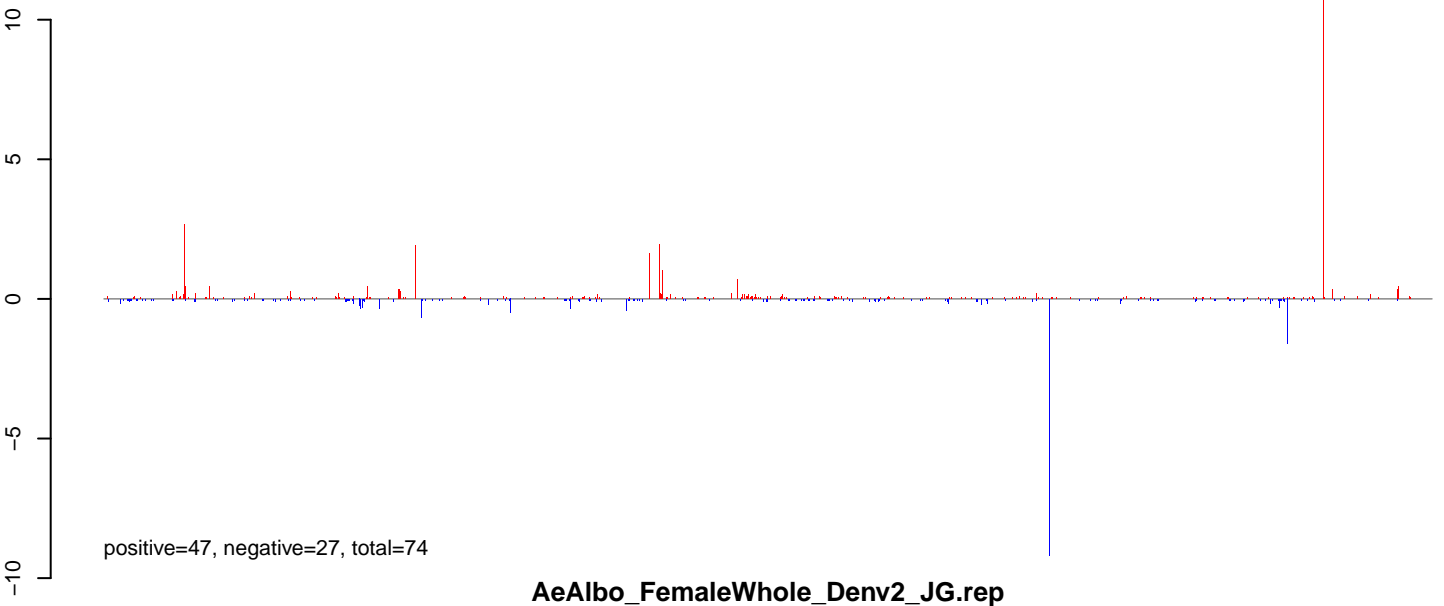
Window size=50, length=1482455, Wolbachia@Wolbachia_wPip:1-1482455

0 500000 1000000 1500000

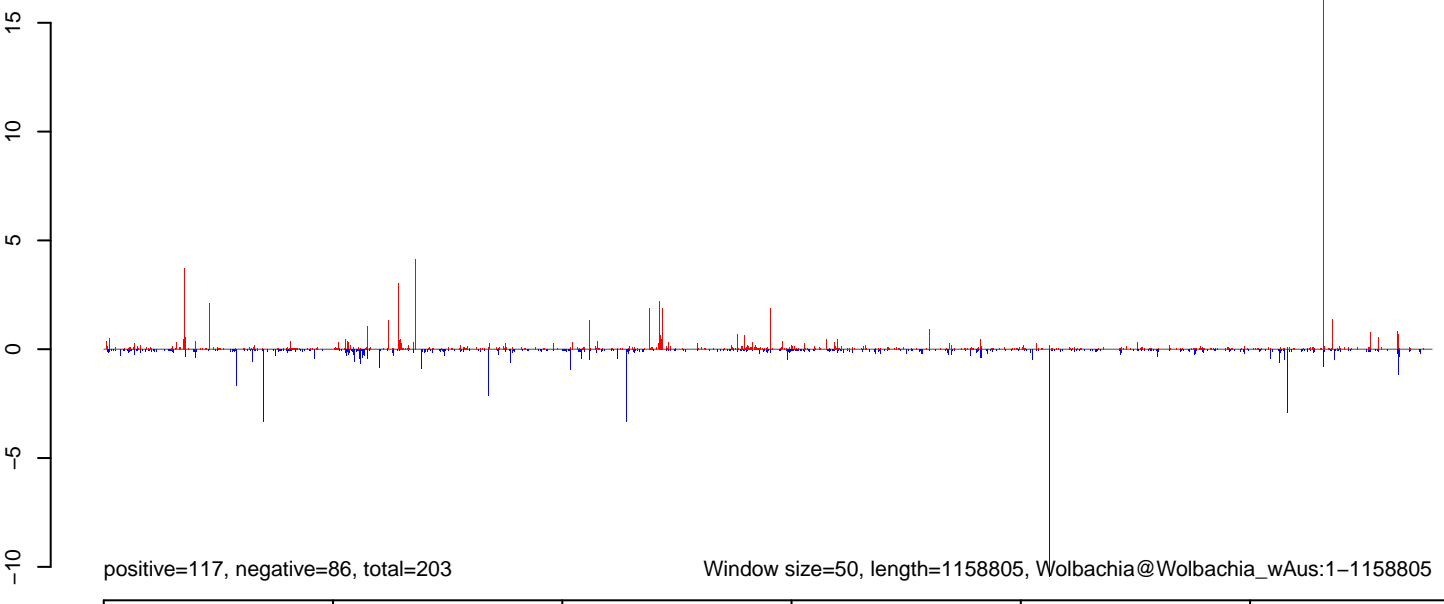
AeAlbo_FemaleWhole_Denv2_JG.18_23.rep



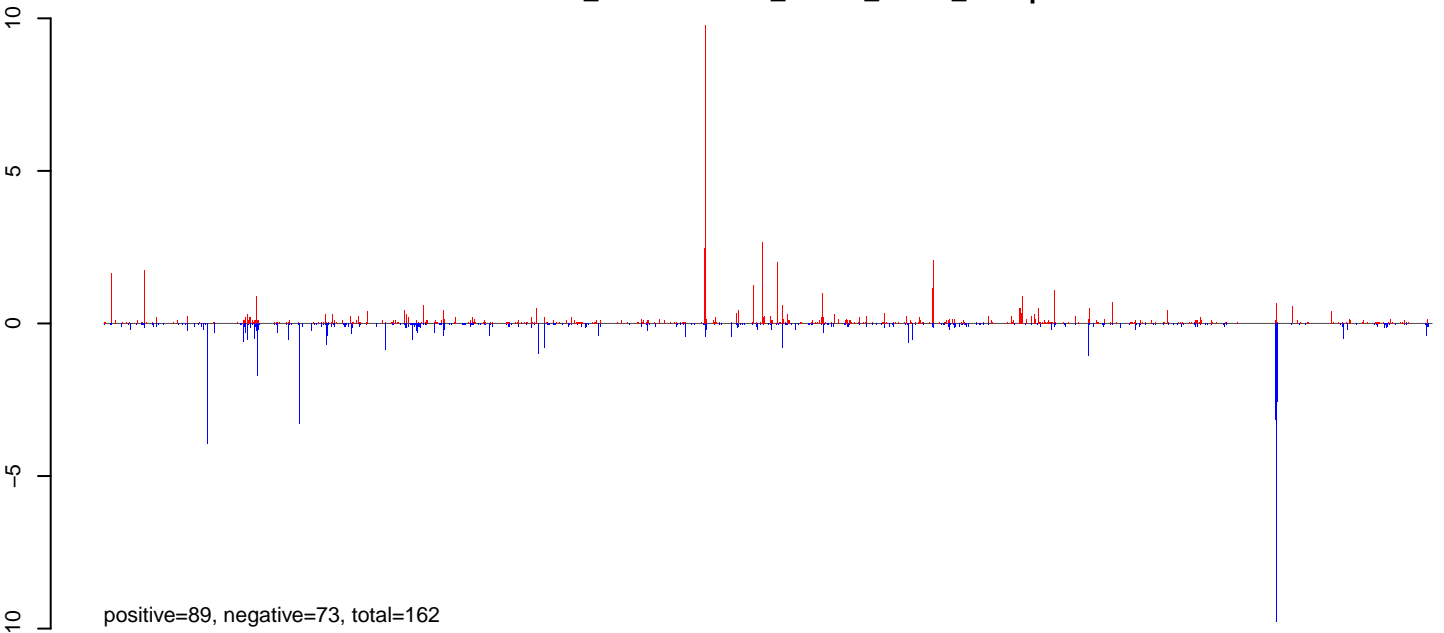
AeAlbo_FemaleWhole_Denv2_JG.24_35.rep



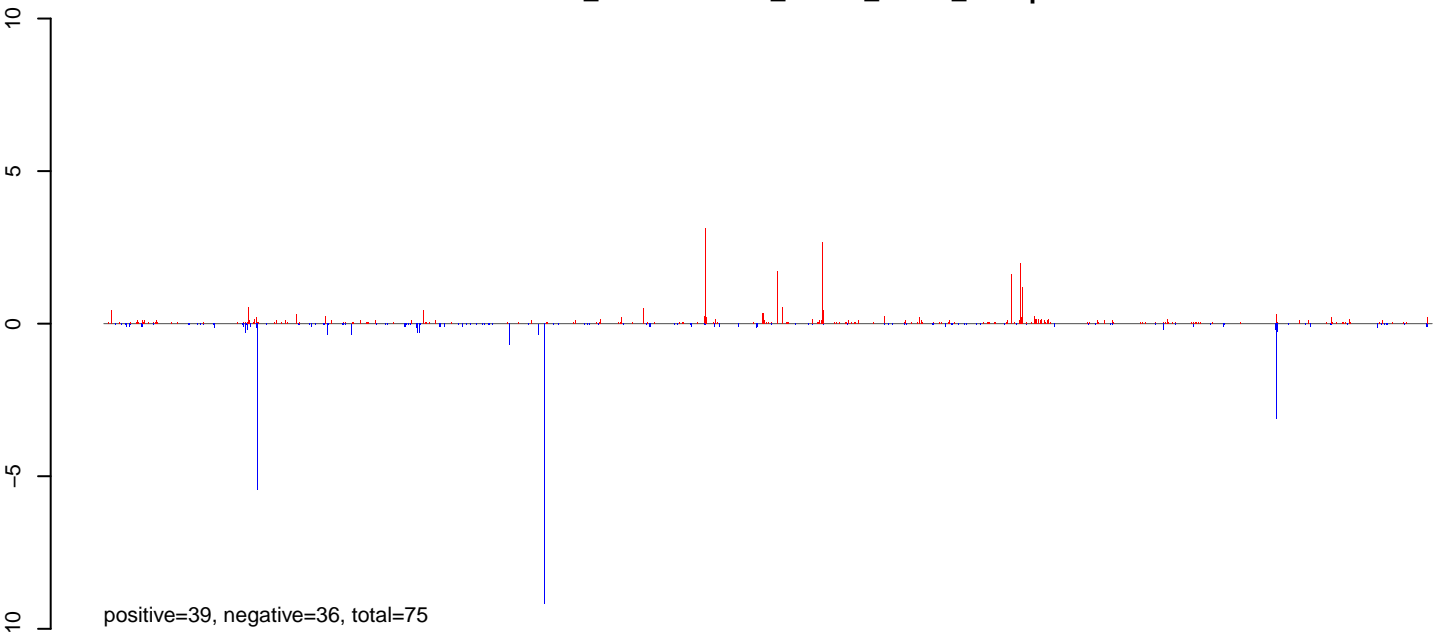
AeAlbo_FemaleWhole_Denv2_JG.rep



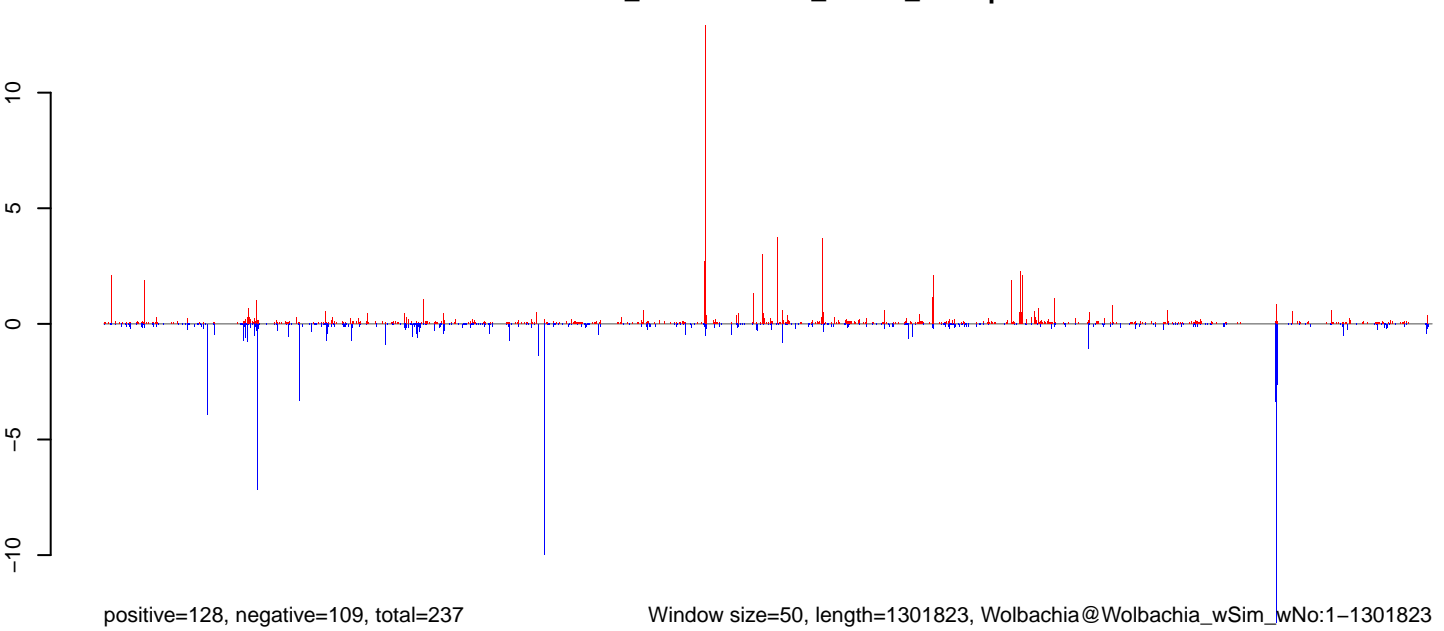
AeAlbo_FemaleWhole_Denv2_JG.18_23.rep



AeAlbo_FemaleWhole_Denv2_JG.24_35.rep



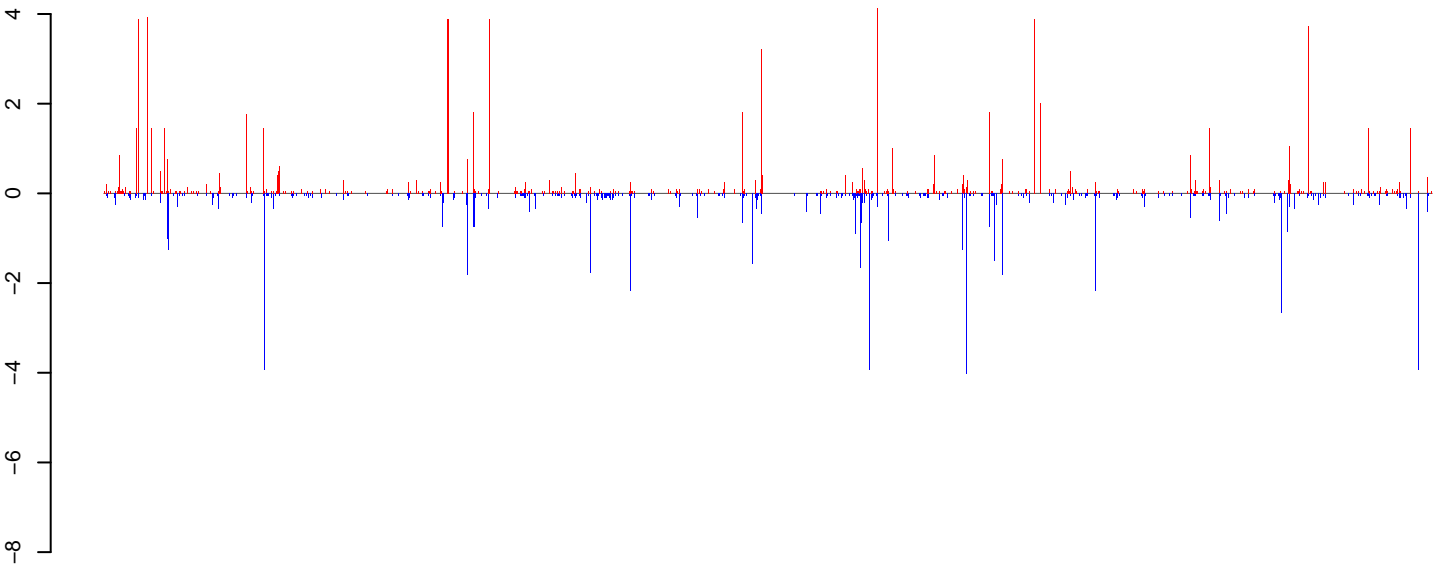
AeAlbo_FemaleWhole_Denv2_JG.rep



Window size=50, length=1301823, Wolbachia@Wolbachia_wSim_wNo:1-1301823

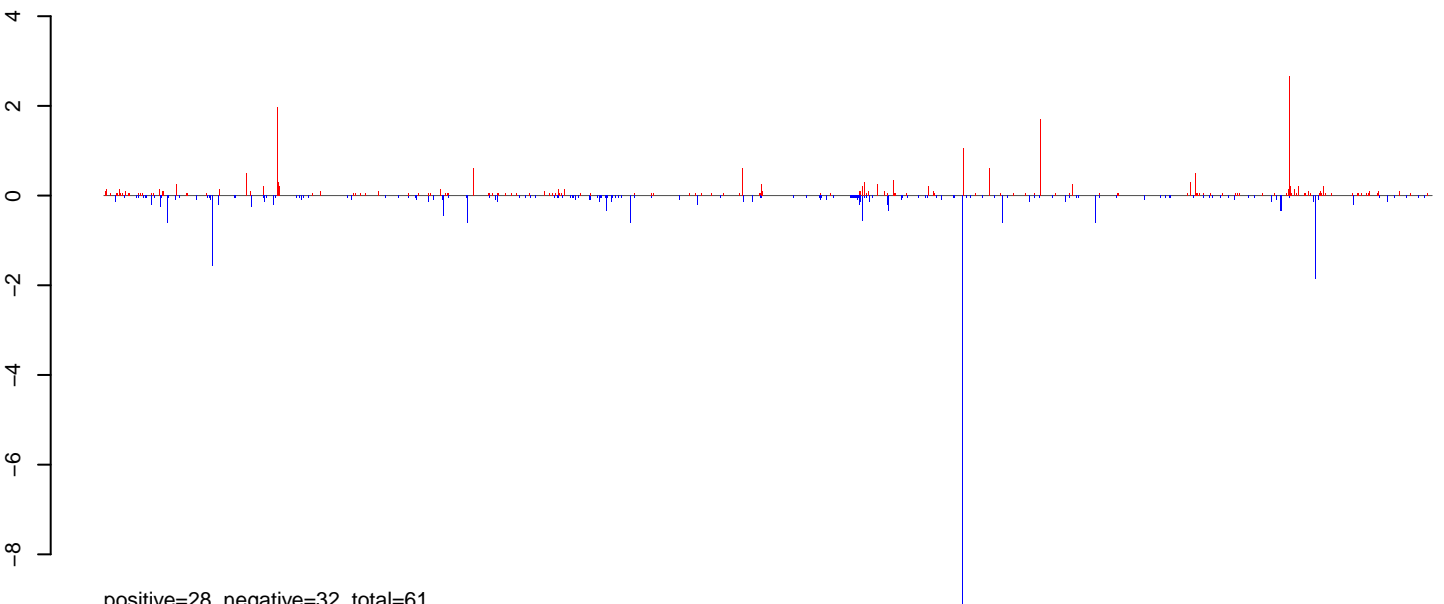
0 200000 400000 600000 800000 1000000 1200000

AeAlbo_FemaleWhole_Denv2_JG.18_23.rep



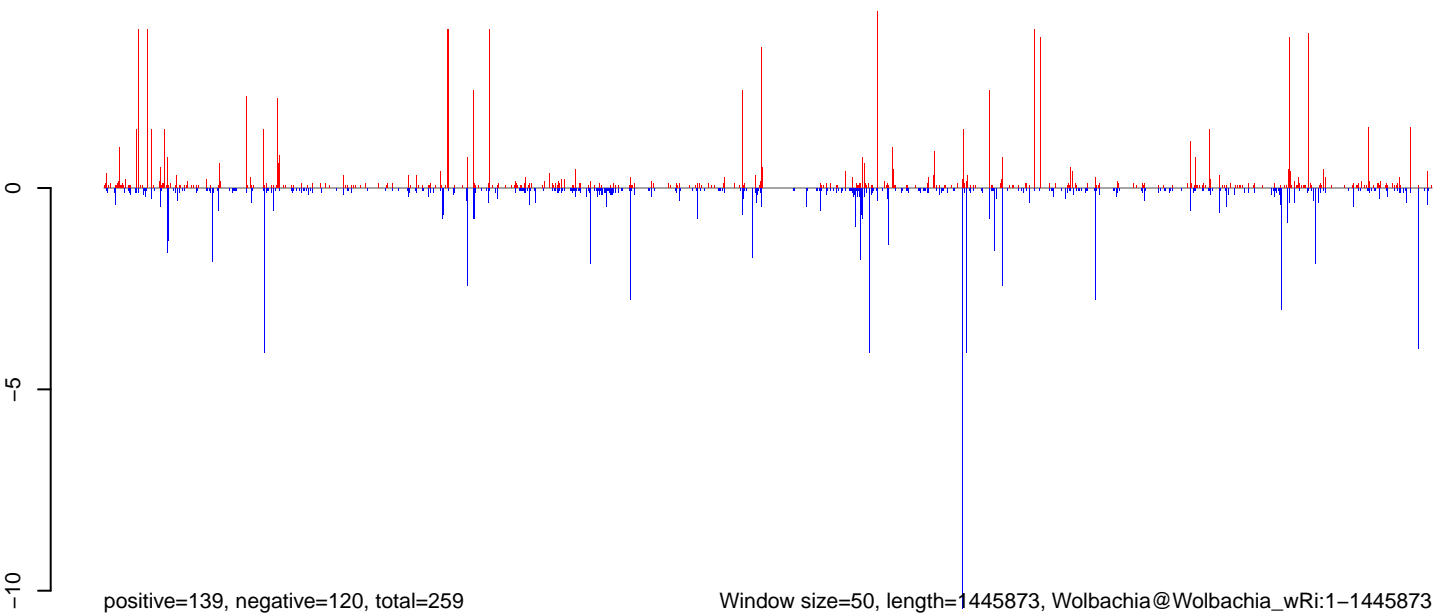
positive=110, negative=88, total=198

AeAlbo_FemaleWhole_Denv2_JG.24_35.rep



positive=28, negative=32, total=61

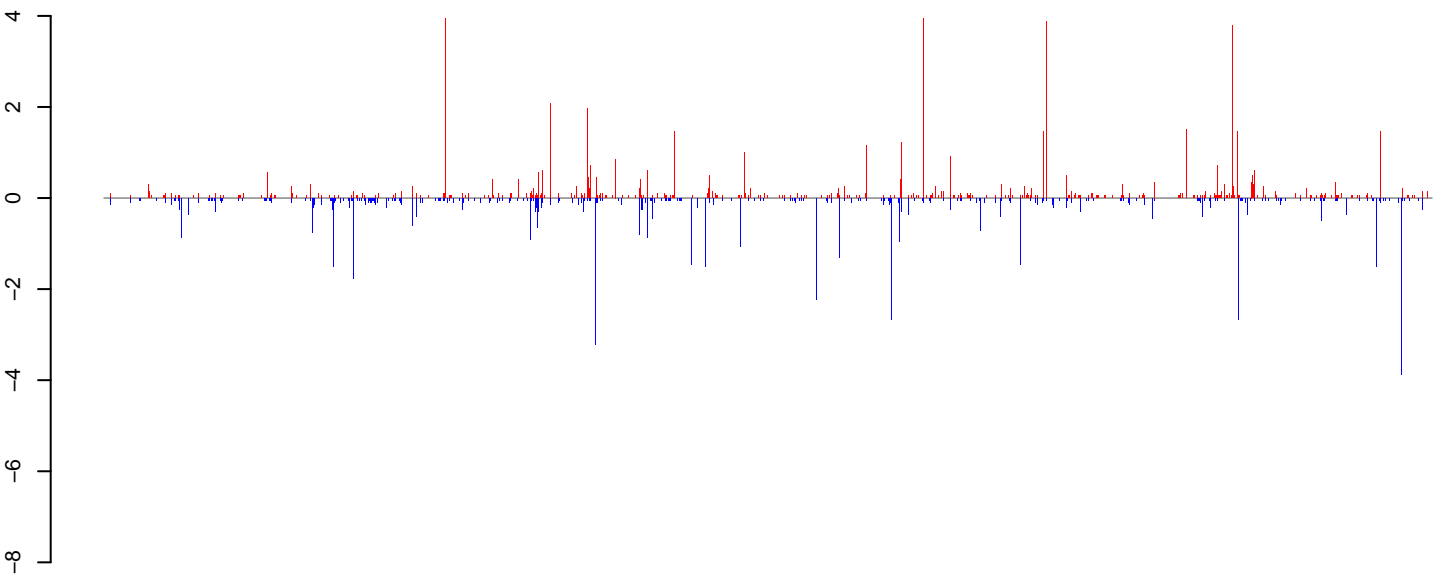
AeAlbo_FemaleWhole_Denv2_JG.rep



positive=139, negative=120, total=259

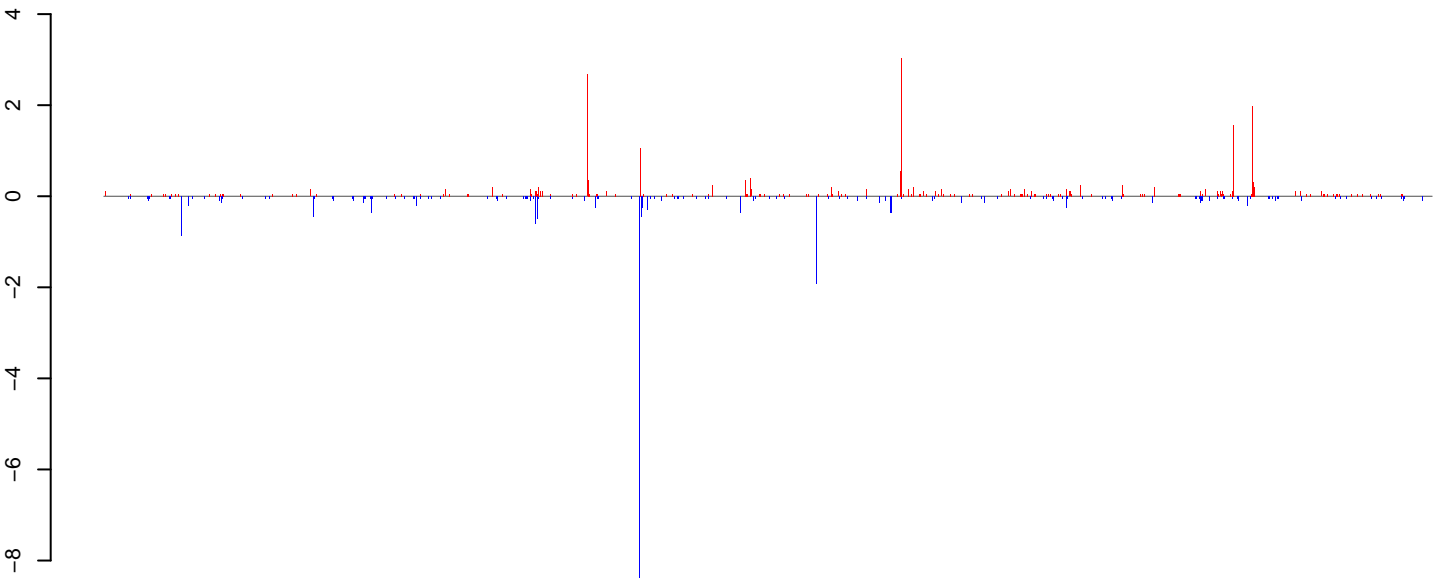
Window size=50, length=1445873, Wolbachia@Wolbachia_wRi:1-1445873

AeAlbo_FemaleWhole_Denv2_JG.18_23.rep



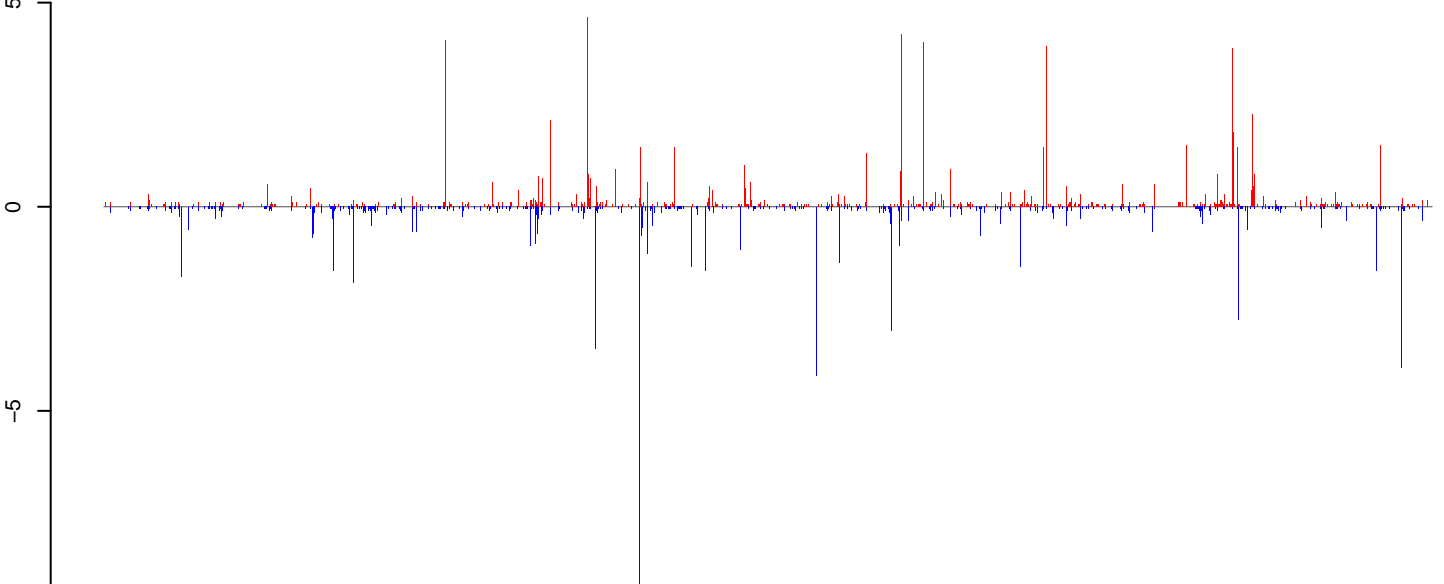
positive=81, negative=70, total=151

AeAlbo_FemaleWhole_Denv2_JG.24_35.rep



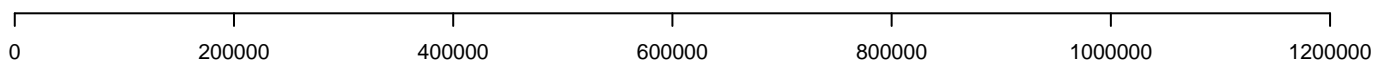
positive=28, negative=28, total=56

AeAlbo_FemaleWhole_Denv2_JG.rep

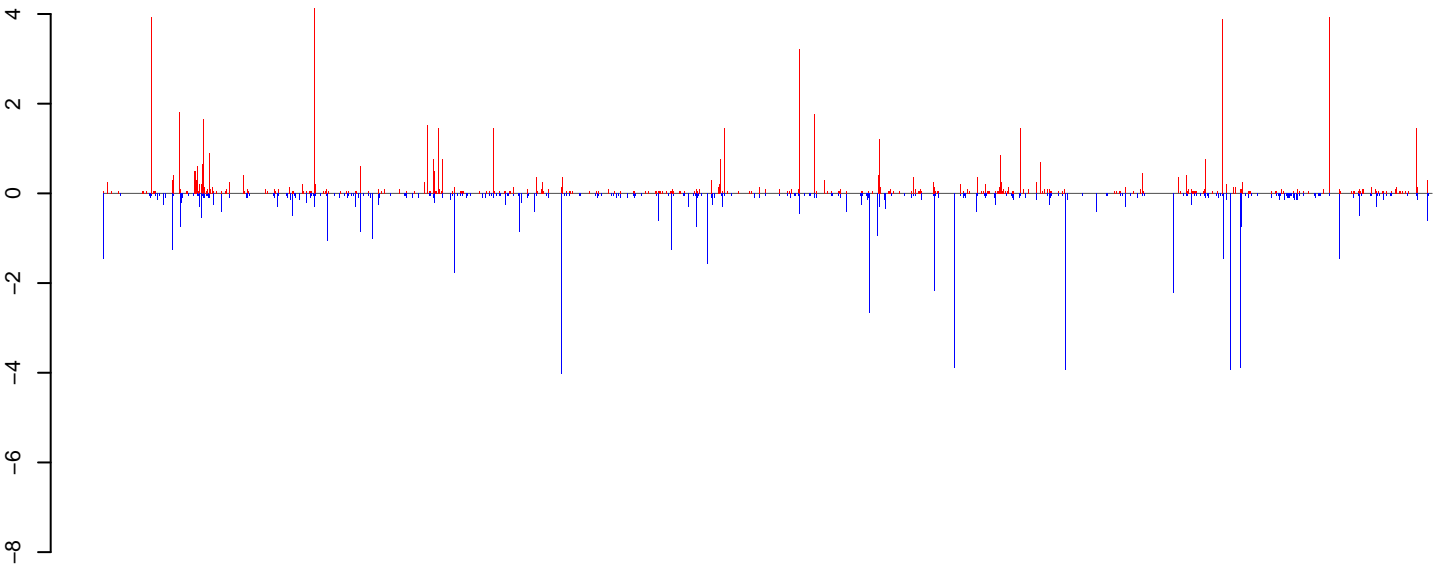


positive=110, negative=97, total=207

Window size=50, length=1211929, Wolbachia@Wolbachia_wVitA:1-1211929

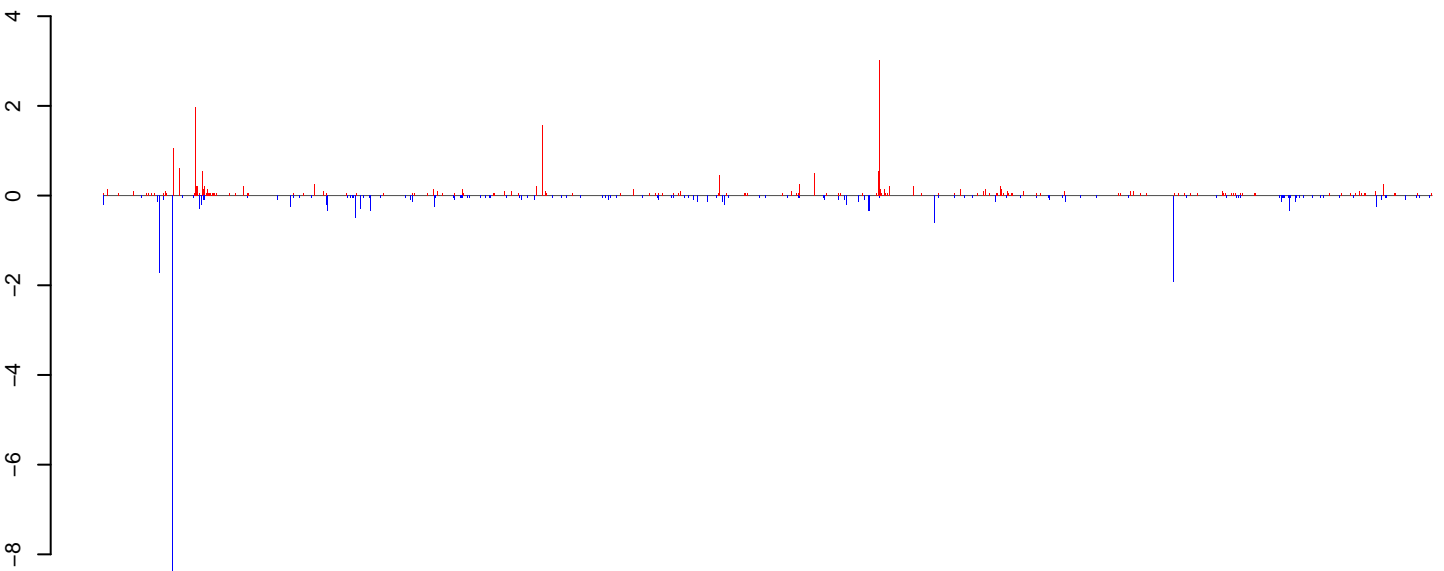


AeAlbo_FemaleWhole_Denv2_JG.18_23.rep



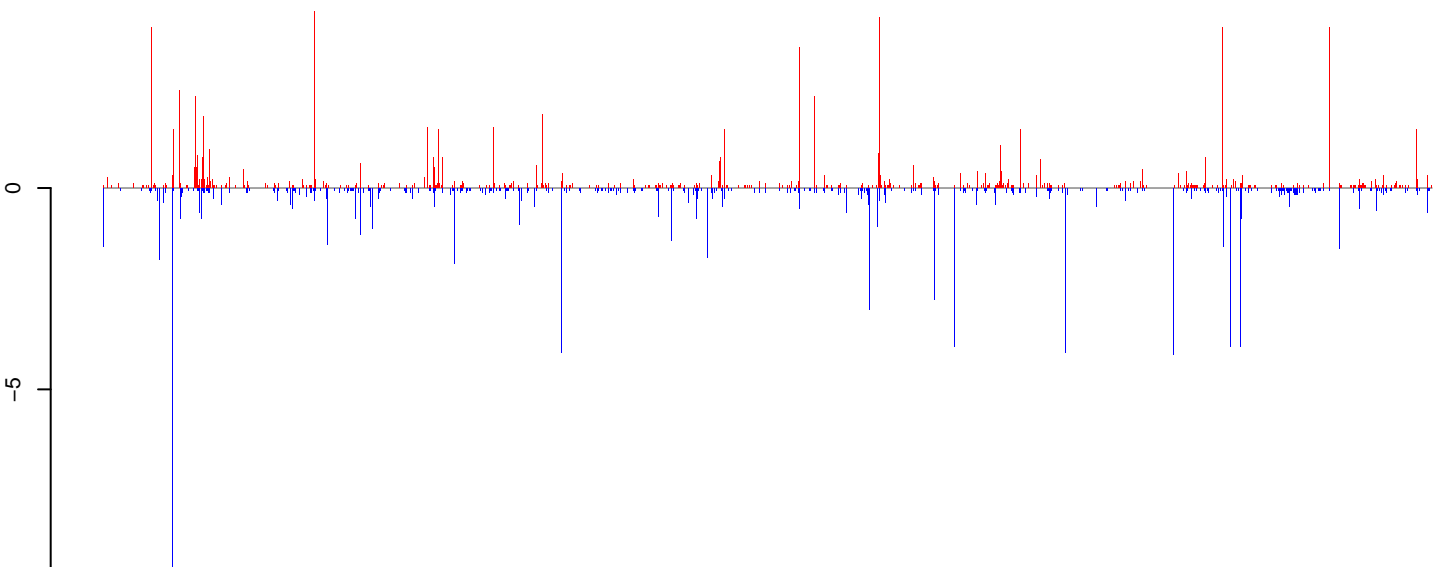
positive=85, negative=85, total=170

AeAlbo_FemaleWhole_Denv2_JG.24_35.rep



positive=27, negative=28, total=55

AeAlbo_FemaleWhole_Denv2_JG.rep

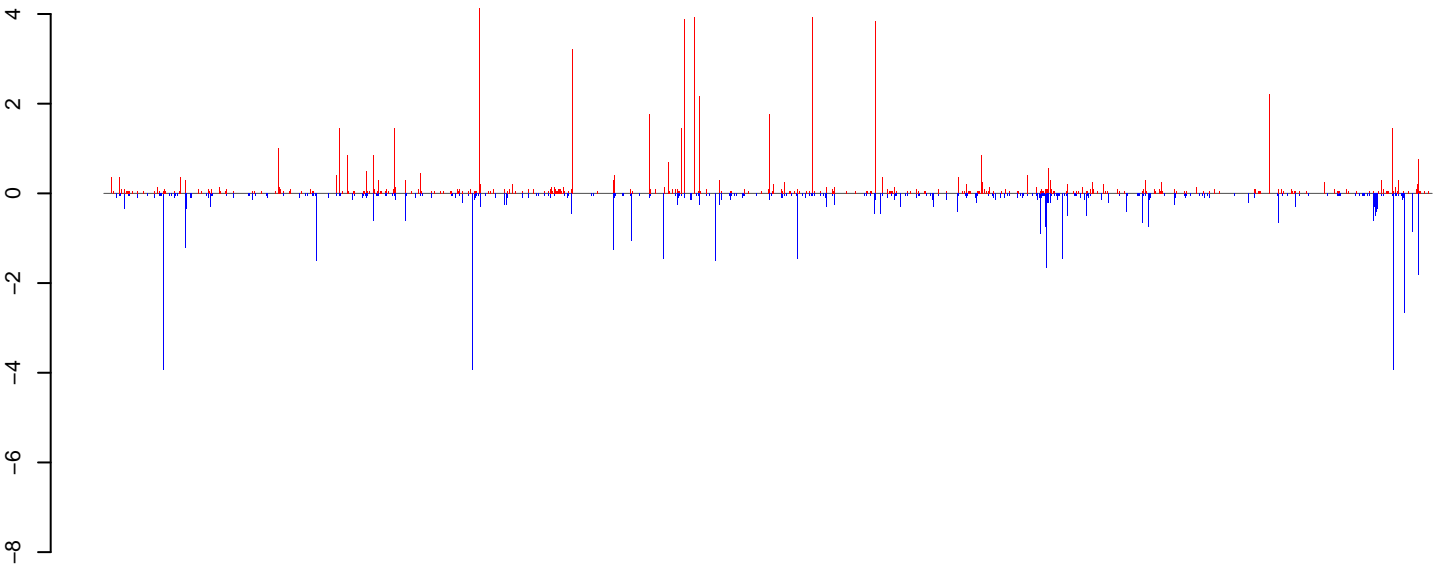


positive=112, negative=113, total=225

Window size=50, length=1236914, Wolbachia@Wolbachia_wAna_India:1-1236914

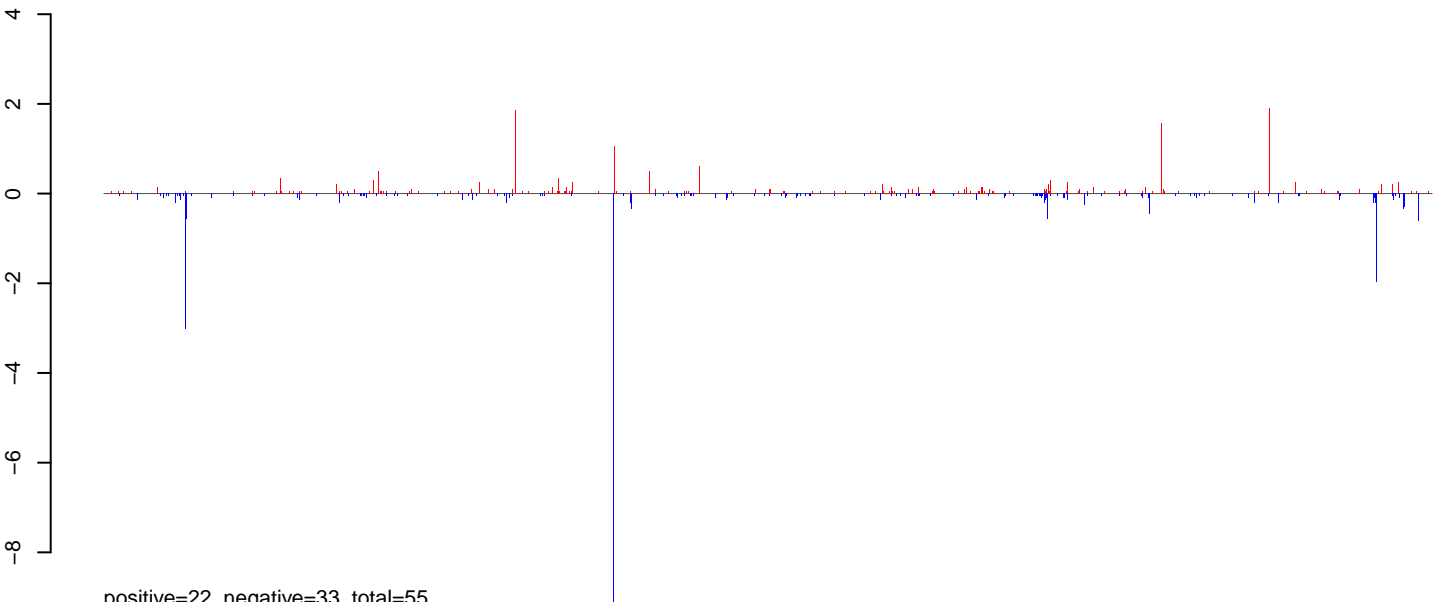
0 200000 400000 600000 800000 1000000 1200000

AeAlbo_FemaleWhole_Denv2_JG.18_23.rep



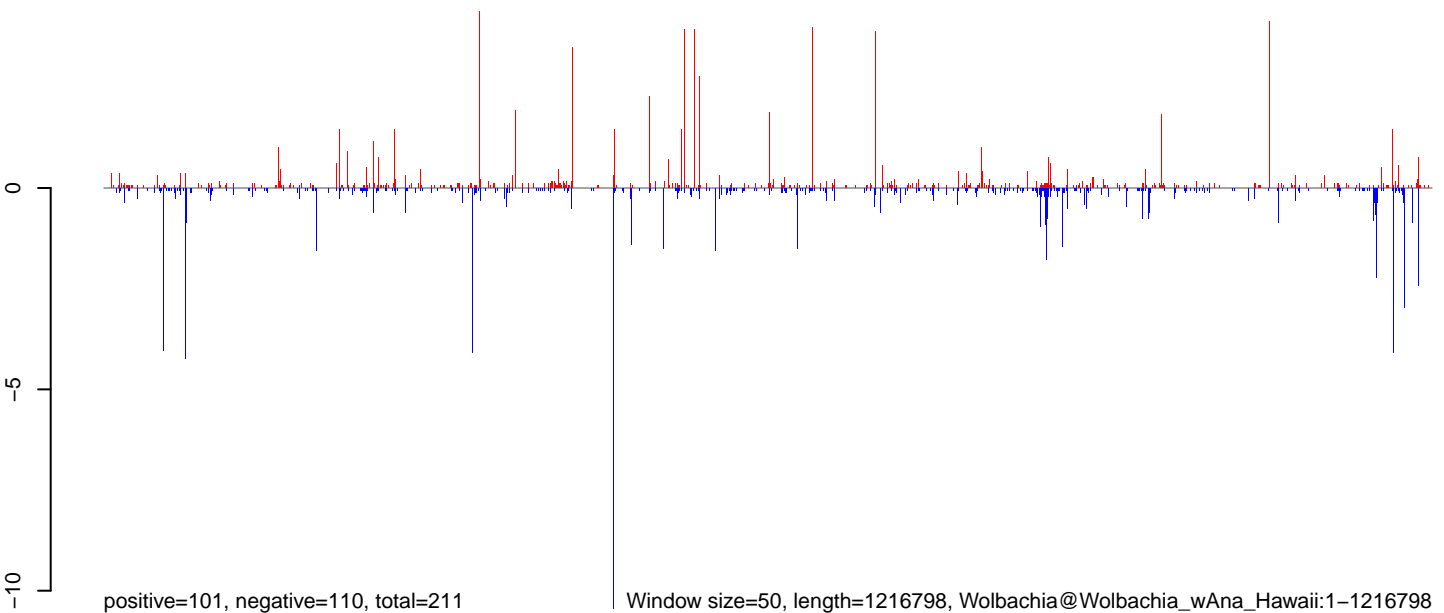
positive=79, negative=77, total=156

AeAlbo_FemaleWhole_Denv2_JG.24_35.rep



positive=22, negative=33, total=55

AeAlbo_FemaleWhole_Denv2_JG.rep

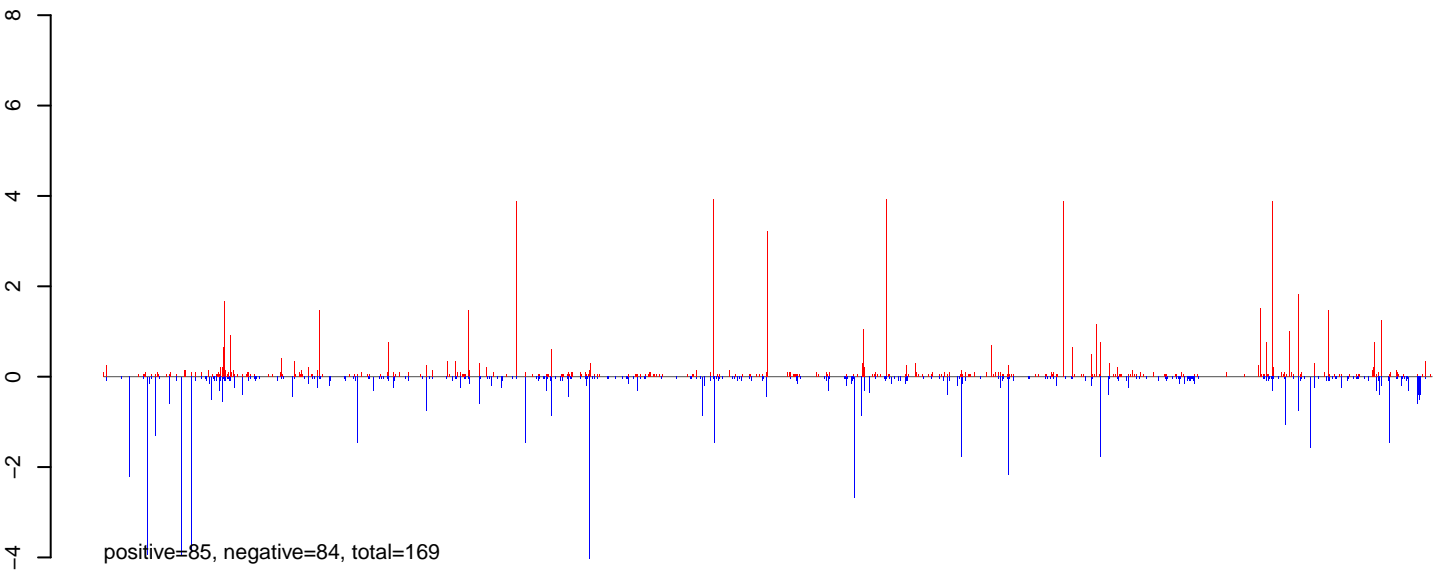


positive=101, negative=110, total=211

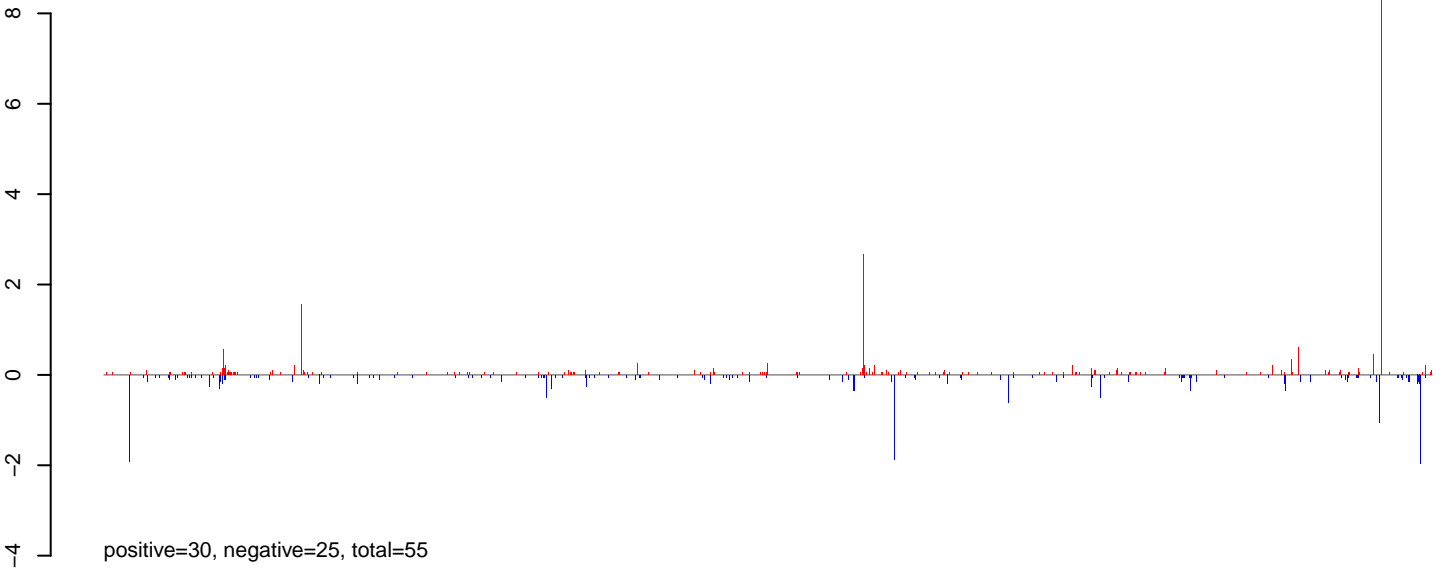
Window size=50, length=1216798, Wolbachia@Wolbachia_wAna_Hawaii:1-1216798

0 200000 400000 600000 800000 1000000 1200000

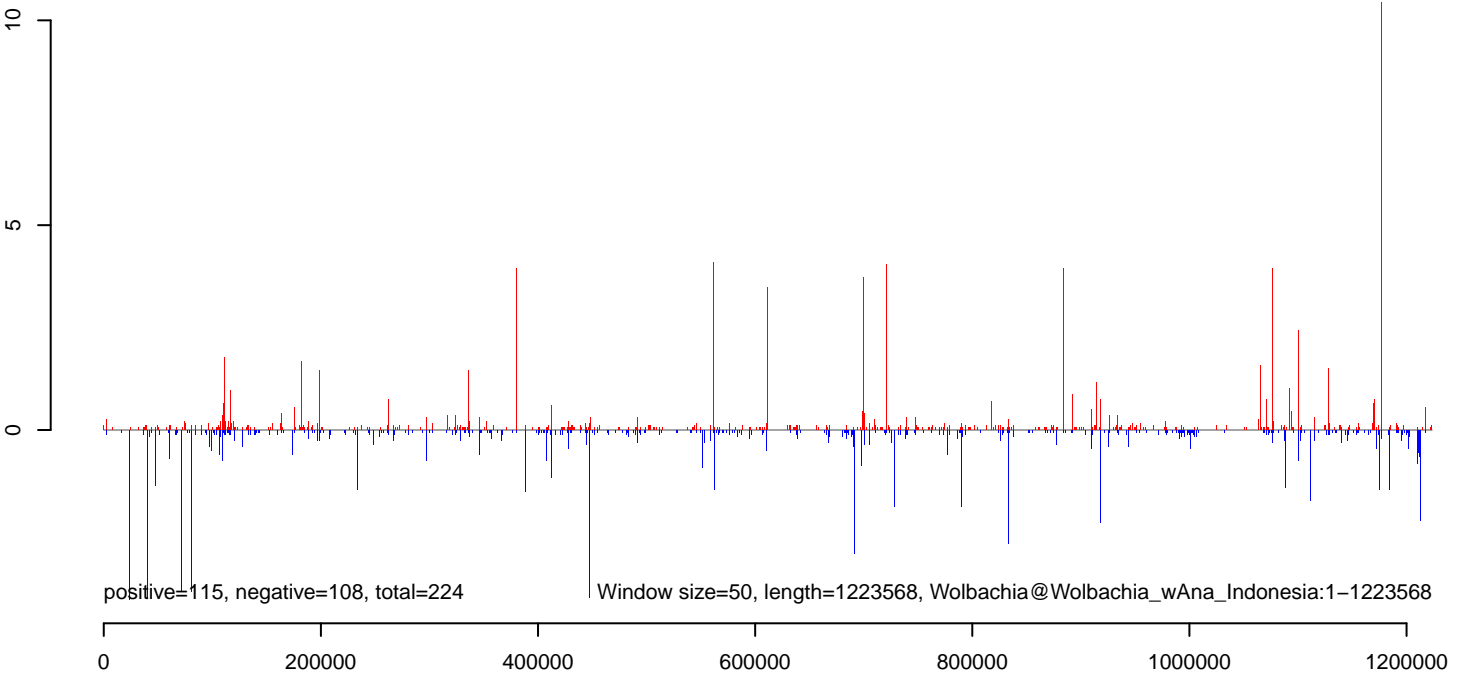
AeAlbo_FemaleWhole_Denv2_JG.18_23.rep



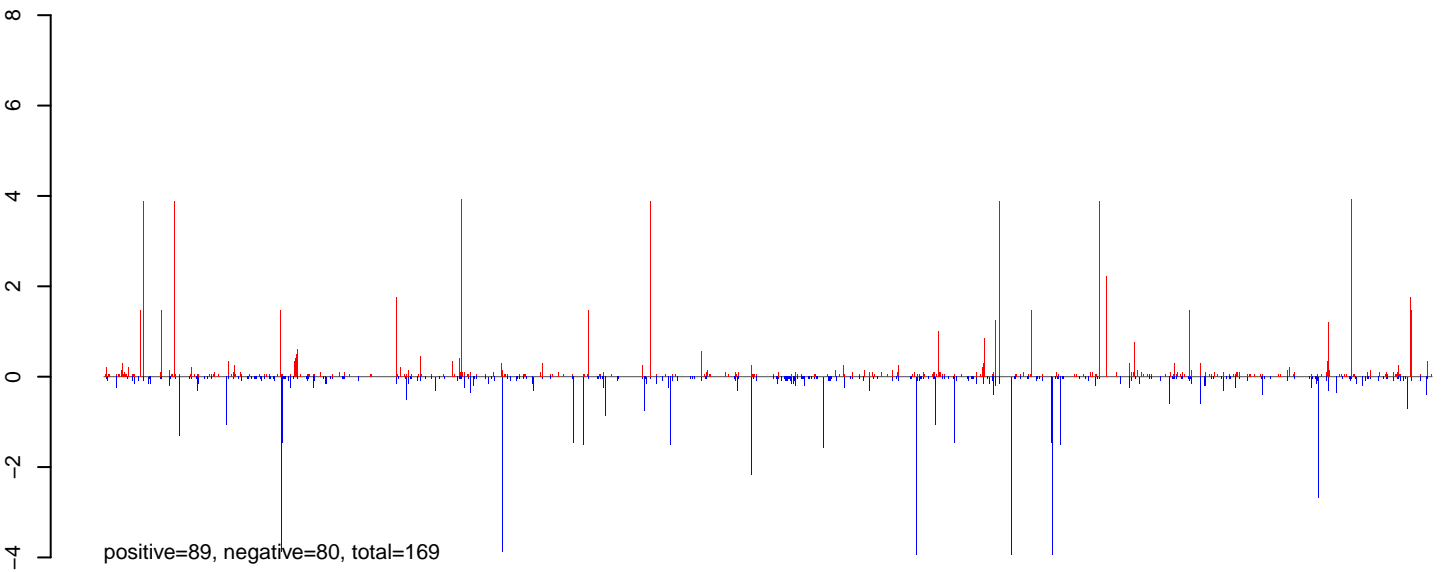
AeAlbo_FemaleWhole_Denv2_JG.24_35.rep



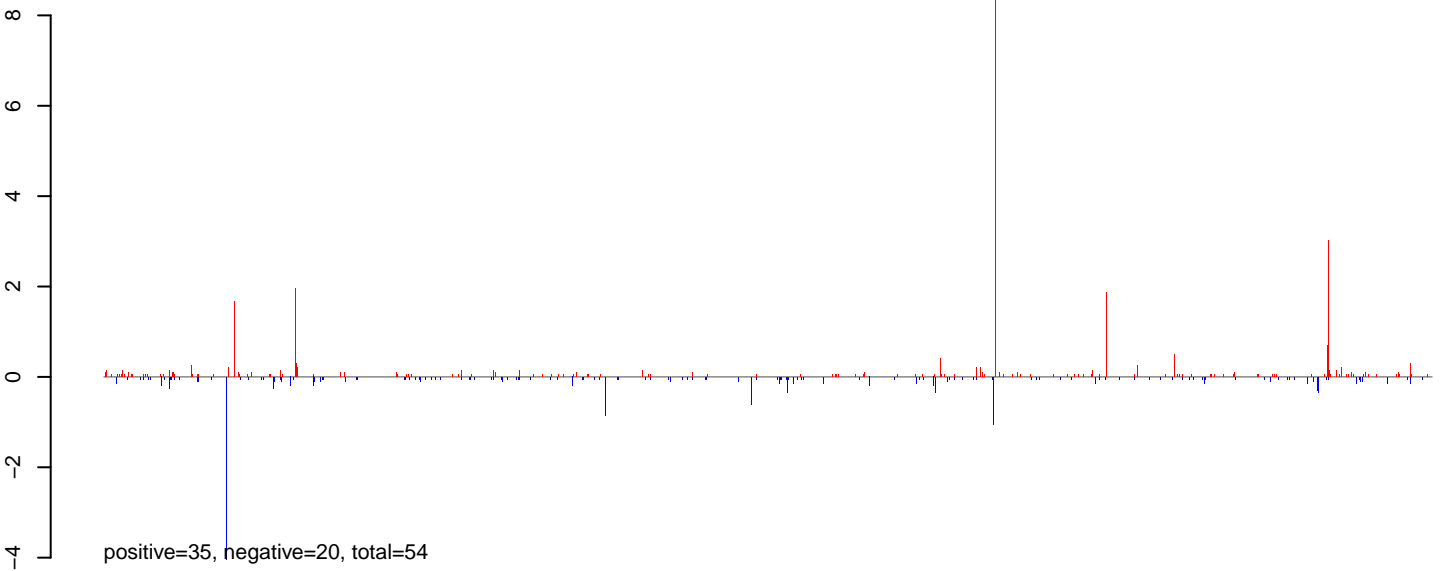
AeAlbo_FemaleWhole_Denv2_JG.rep



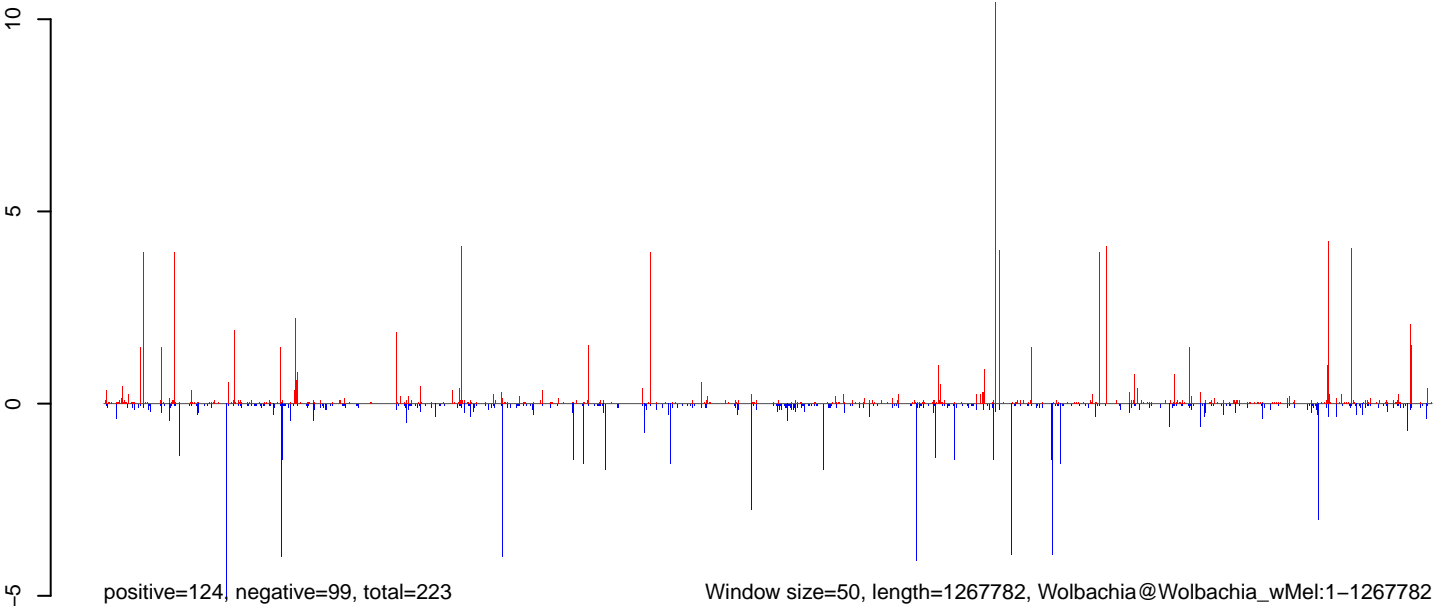
AeAlbo_FemaleWhole_Denv2_JG.18_23.rep



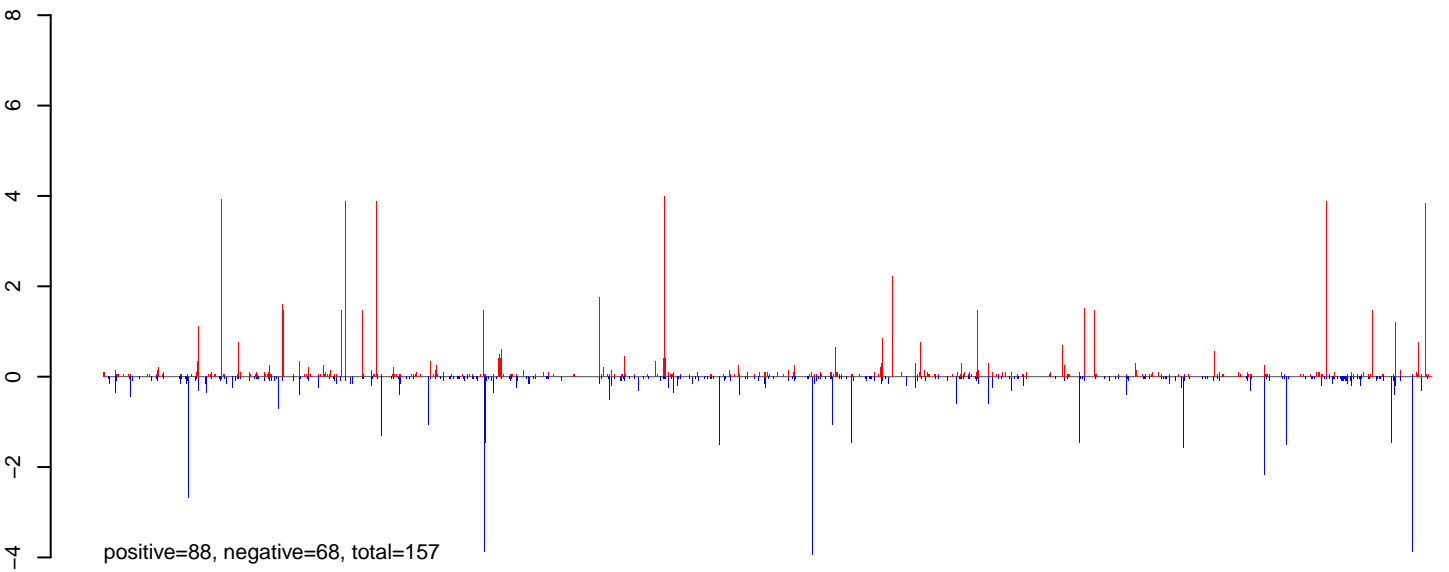
AeAlbo_FemaleWhole_Denv2_JG.24_35.rep



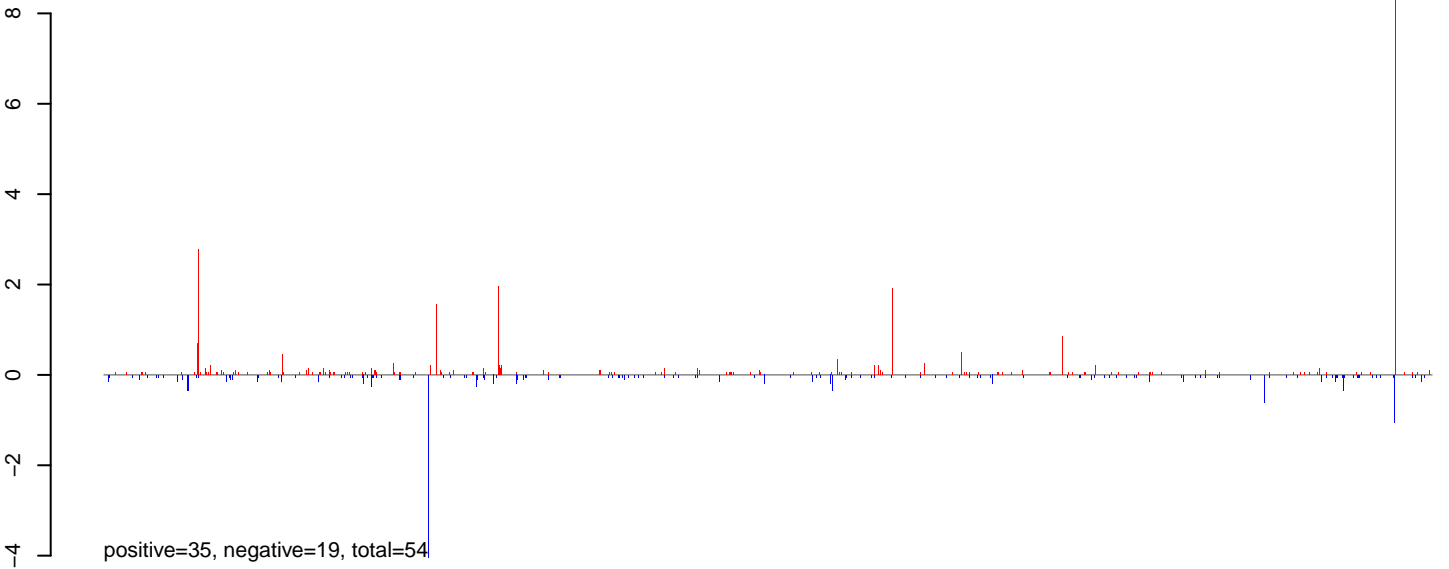
AeAlbo_FemaleWhole_Denv2_JG.rep



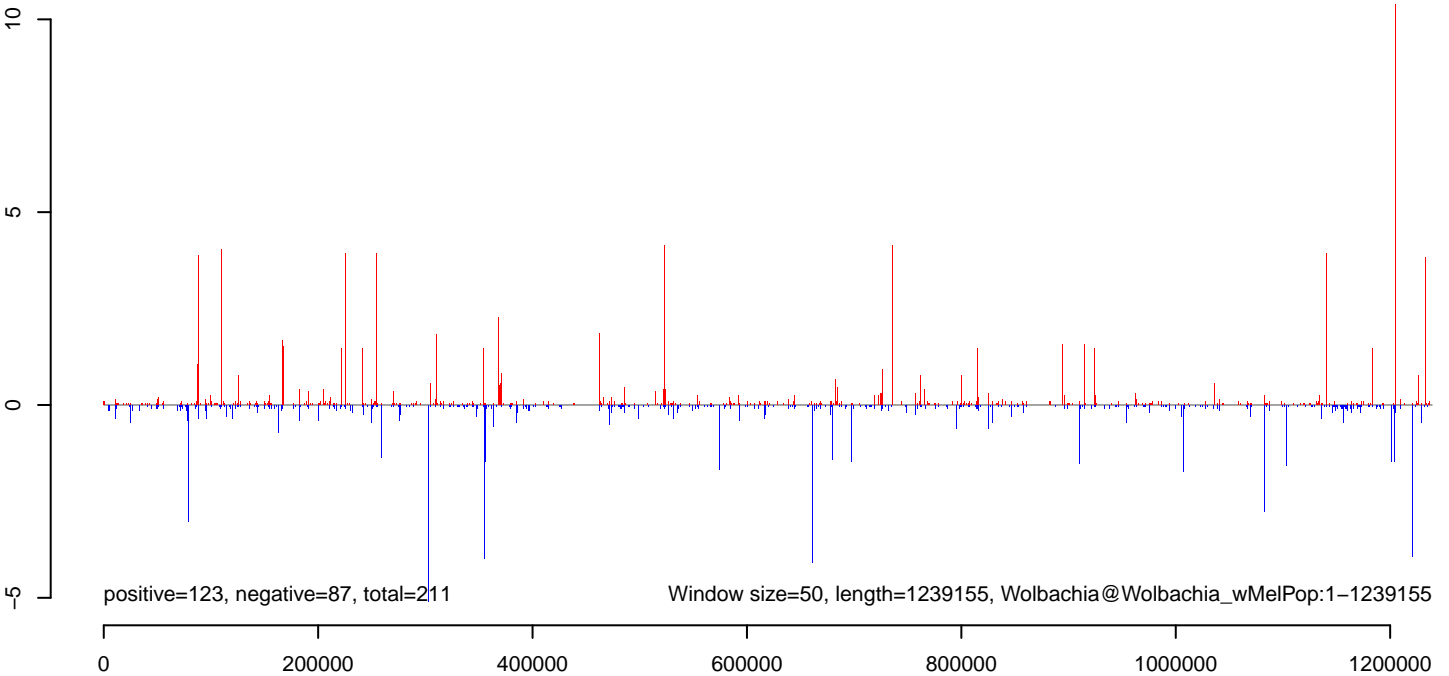
AeAlbo_FemaleWhole_Denv2_JG.18_23.rep



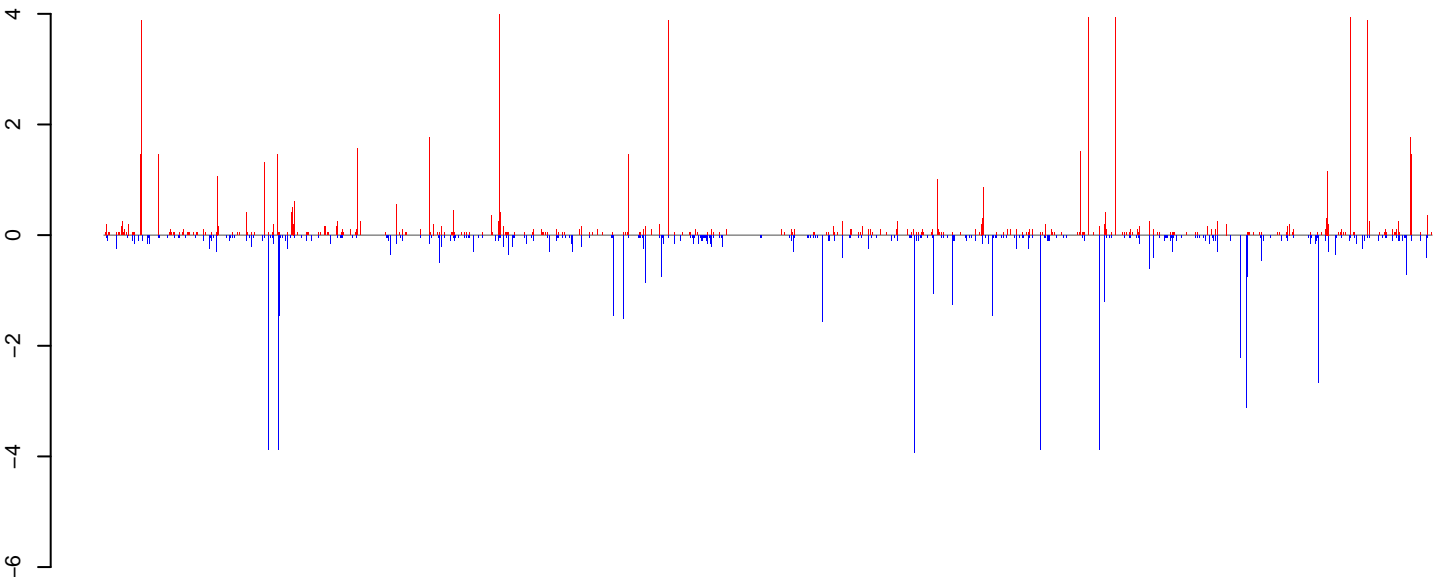
AeAlbo_FemaleWhole_Denv2_JG.24_35.rep



AeAlbo_FemaleWhole_Denv2_JG.rep

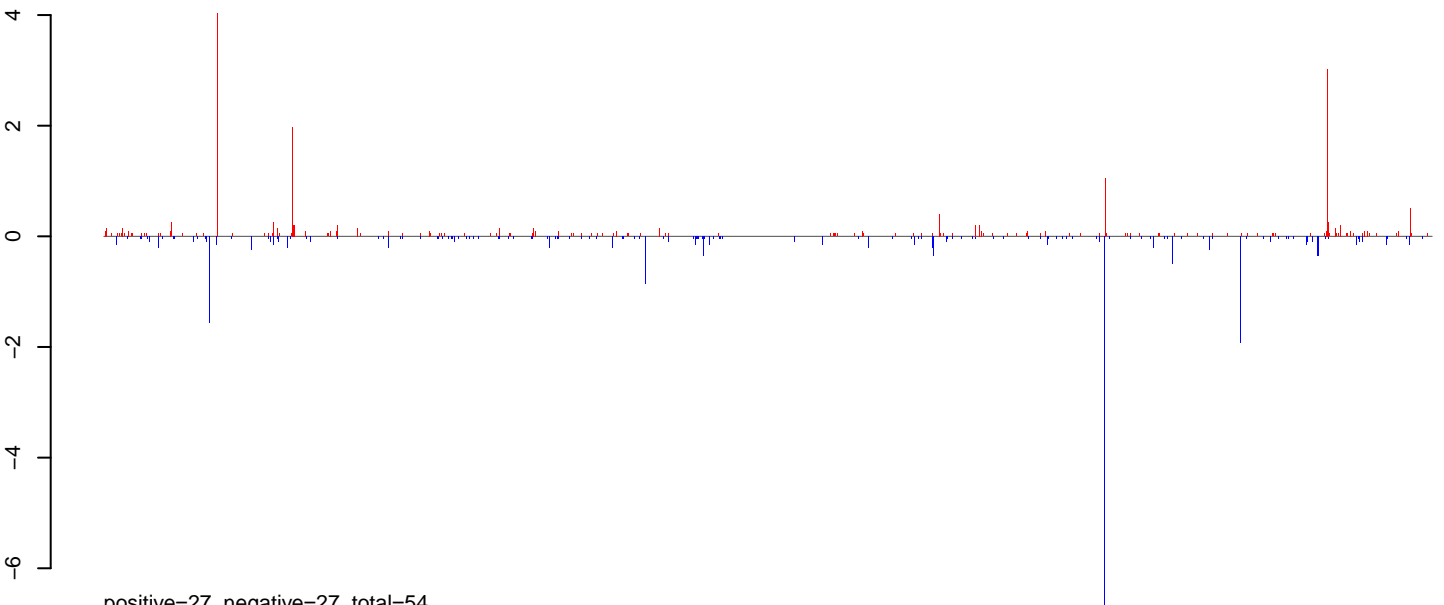


AeAlbo_FemaleWhole_Denv2_JG.18_23.rep



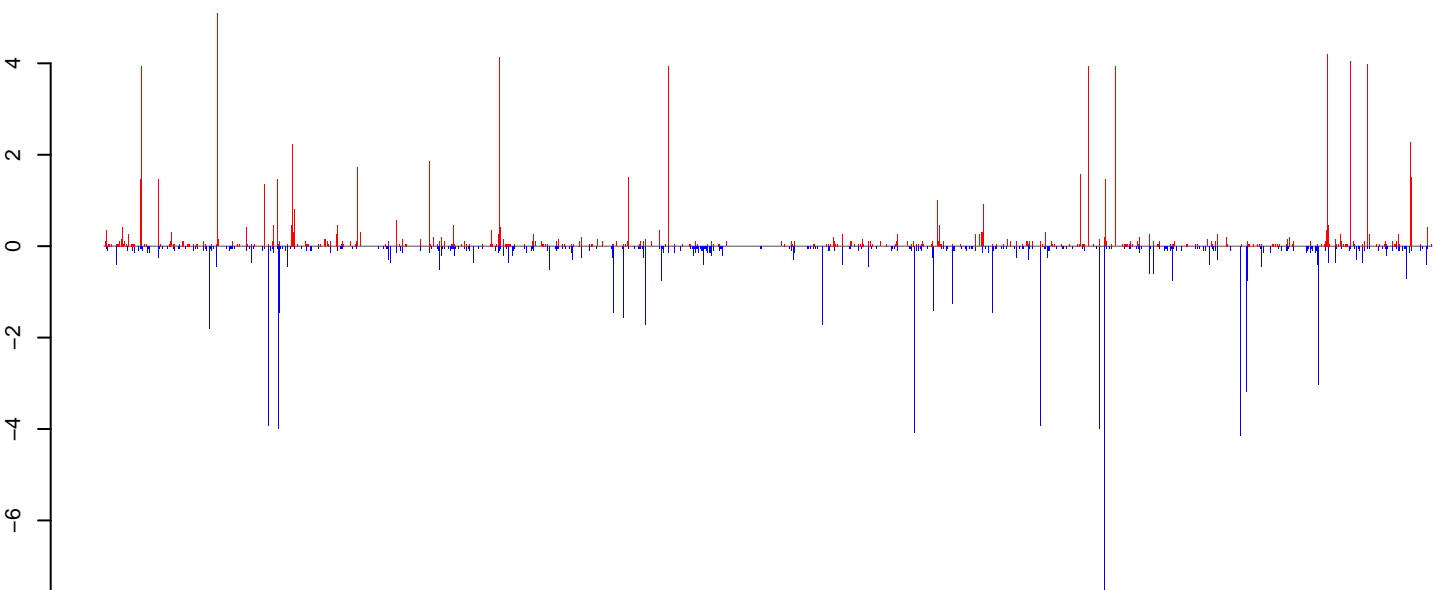
positive=94, negative=81, total=174

AeAlbo_FemaleWhole_Denv2_JG.24_35.rep



positive=27, negative=27, total=54

AeAlbo_FemaleWhole_Denv2_JG.rep

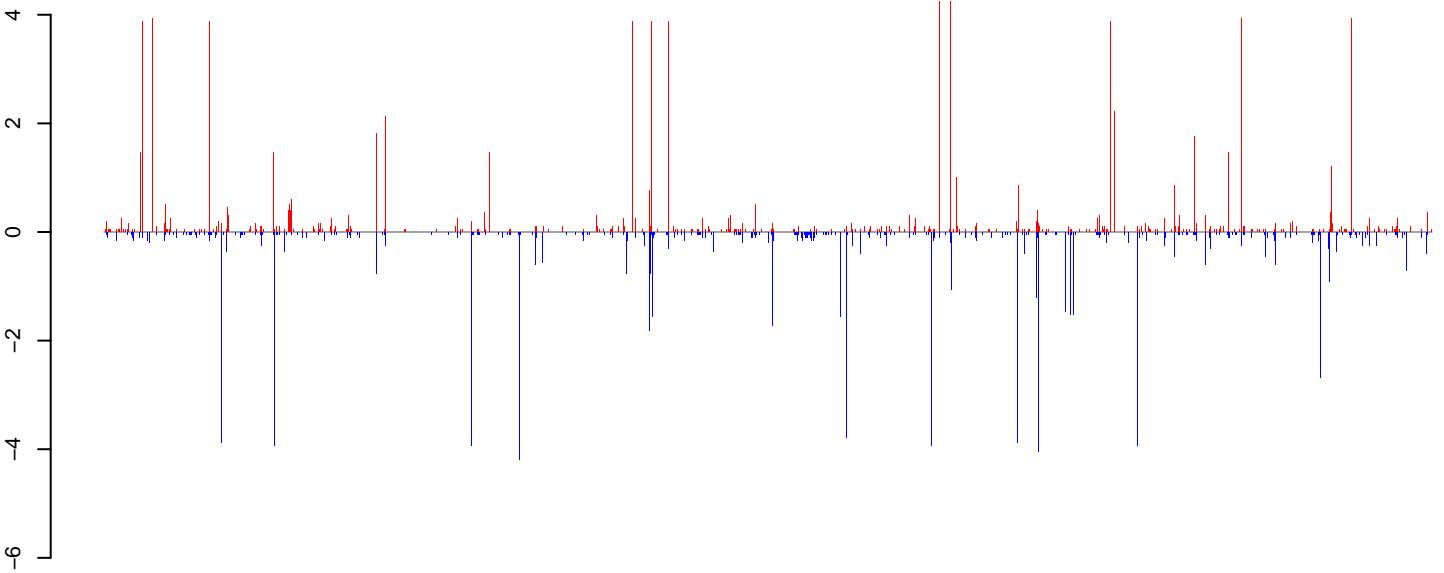


positive=120, negative=108, total=228

Window size=50, length=1268461, Wolbachia@Wolbachia_wSim_wAu:1-1268461

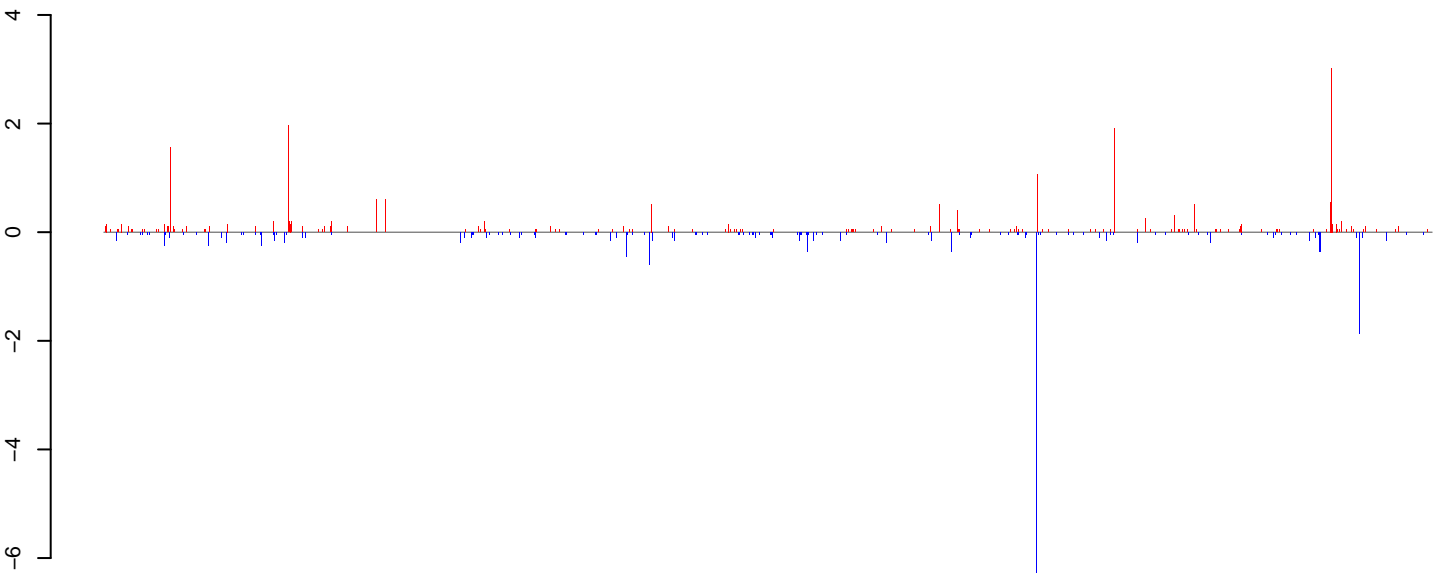
0 200000 400000 600000 800000 1000000 1200000

AeAlbo_FemaleWhole_Denv2_JG.18_23.rep



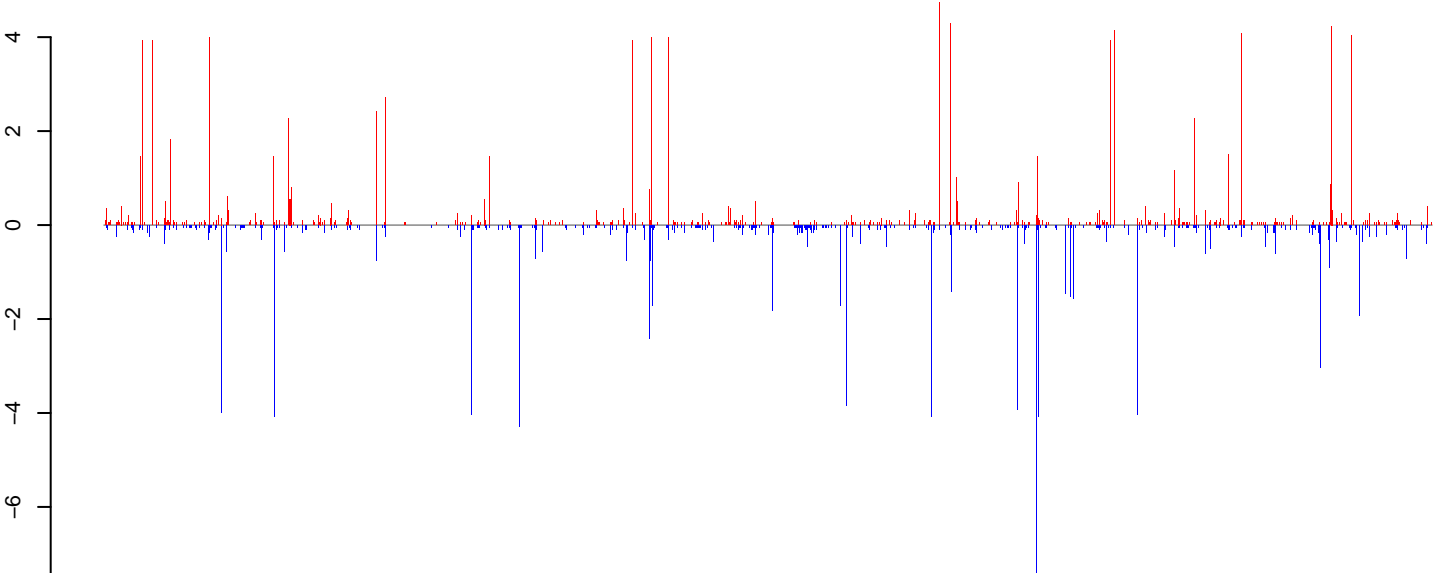
positive=114, negative=96, total=210

AeAlbo_FemaleWhole_Denv2_JG.24_35.rep



positive=28, negative=25, total=53

AeAlbo_FemaleWhole_Denv2_JG.rep

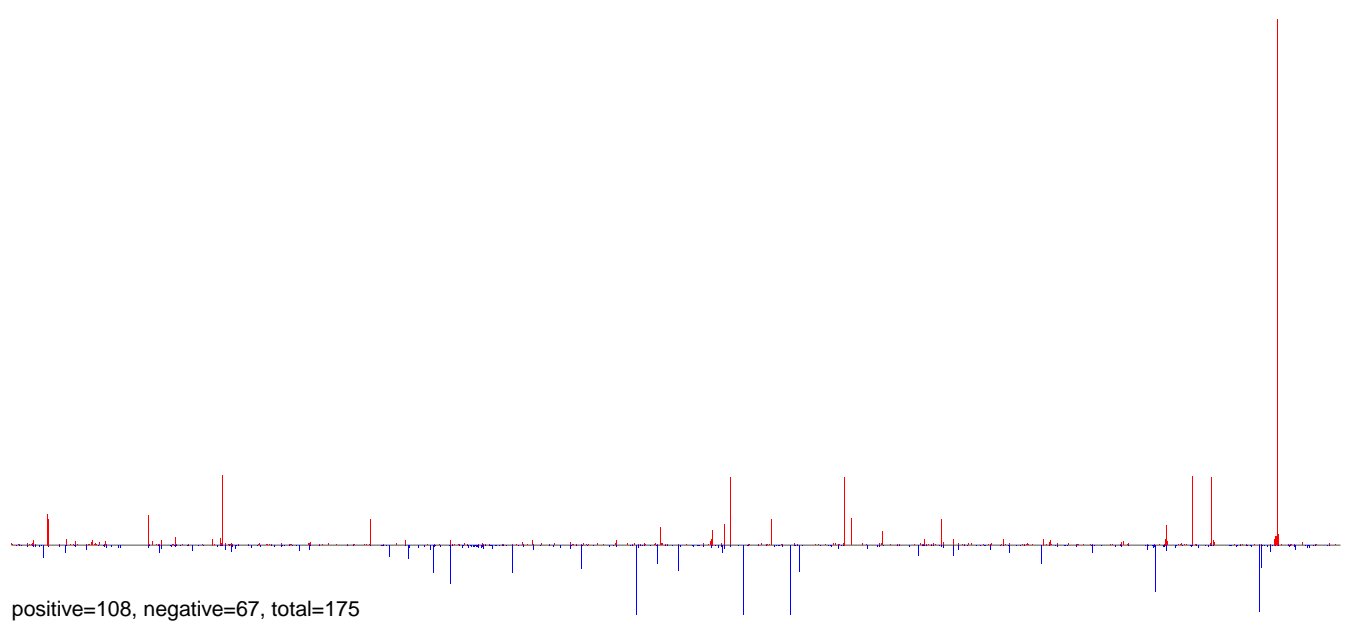


positive=143, negative=121, total=263

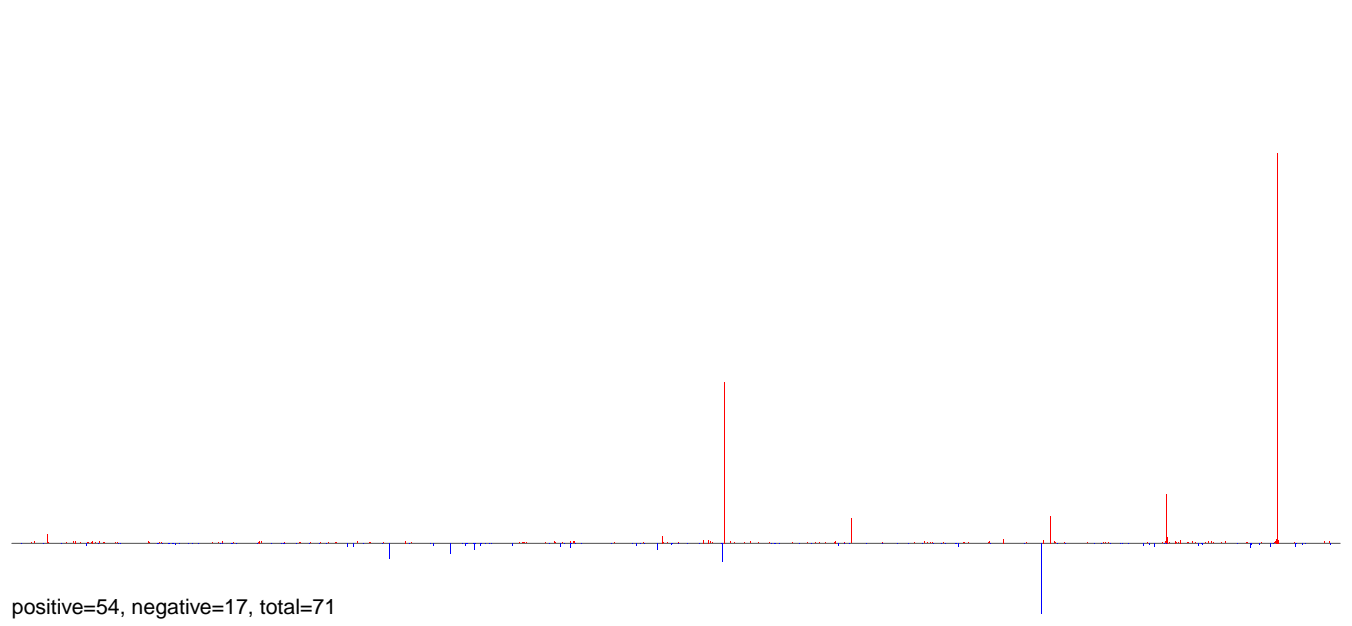
Window size=50, length=1295804, Wolbachia@Wolbachia_wSim_wHa:1-1295804

0 200000 400000 600000 800000 1000000 1200000

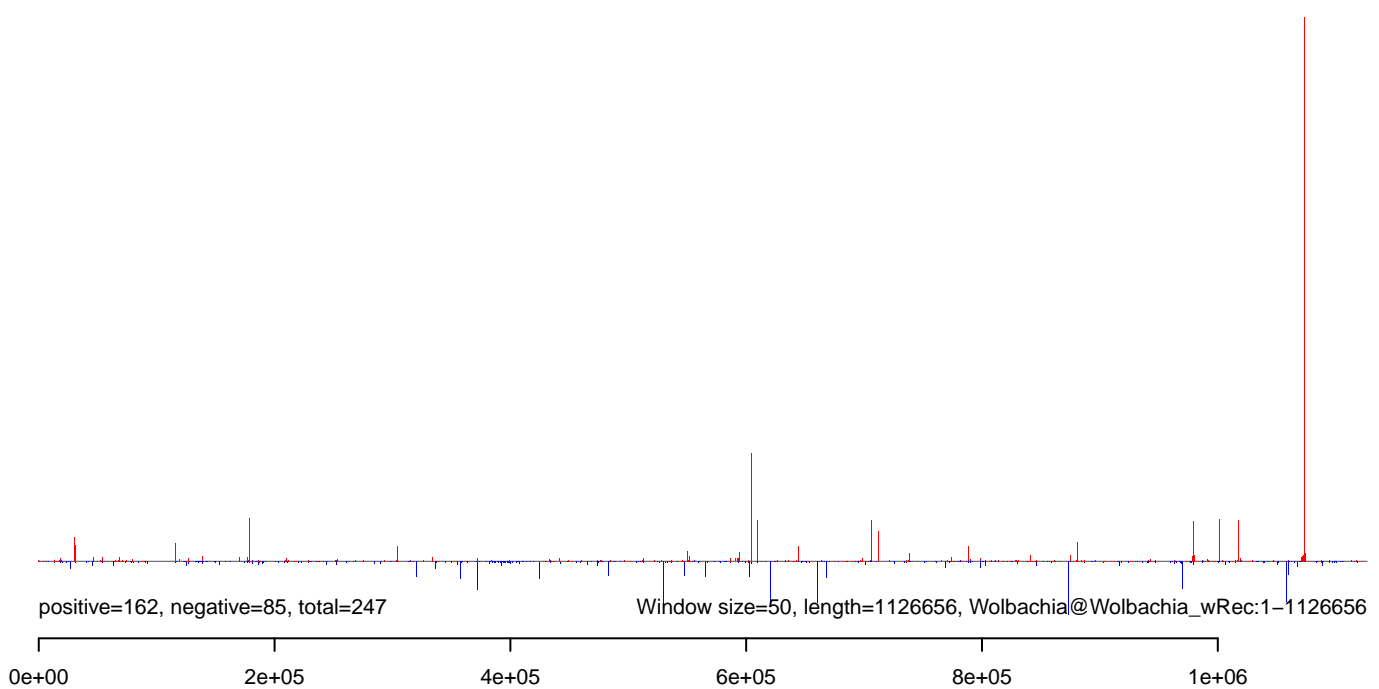
AeAlbo_FemaleWhole_Denv2_JG.18_23.rep



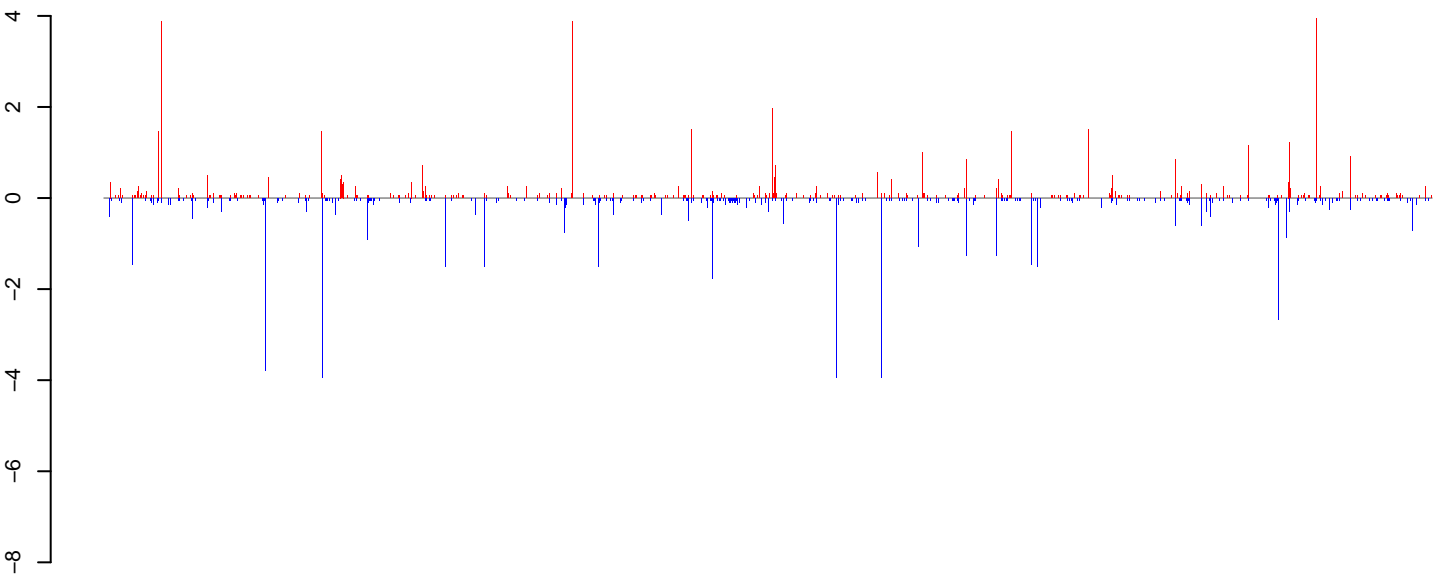
AeAlbo_FemaleWhole_Denv2_JG.24_35.rep



AeAlbo_FemaleWhole_Denv2_JG.rep

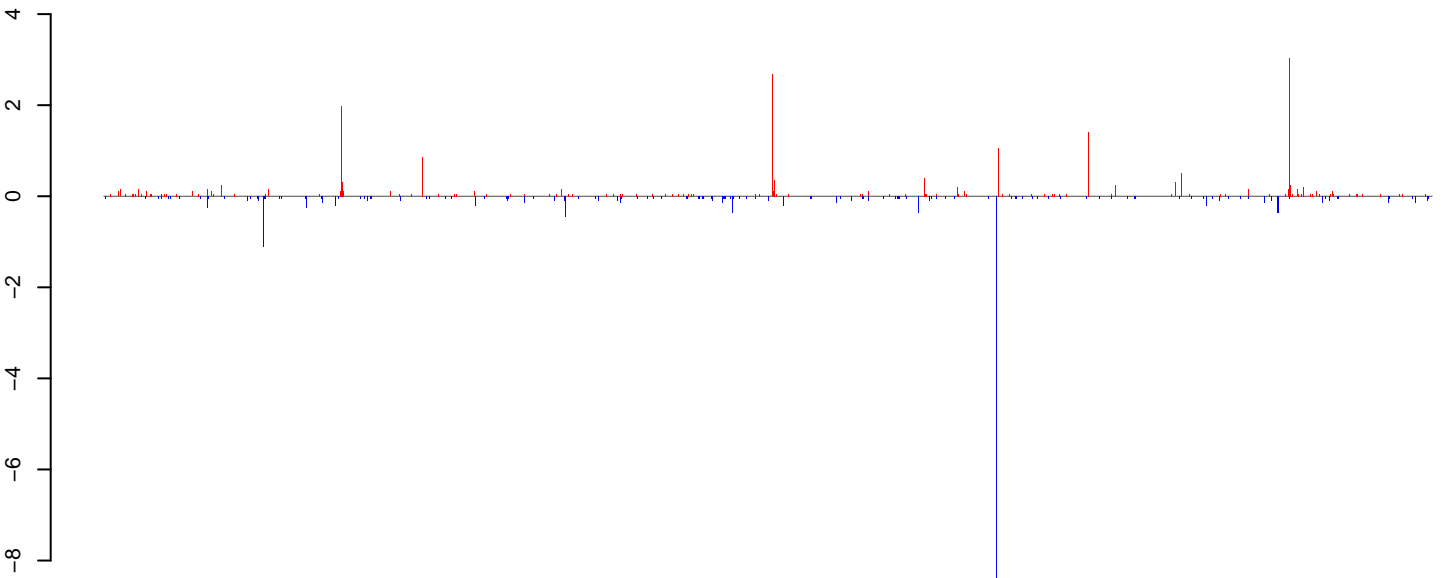


AeAlbo_FemaleWhole_Denv2_JG.18_23.rep



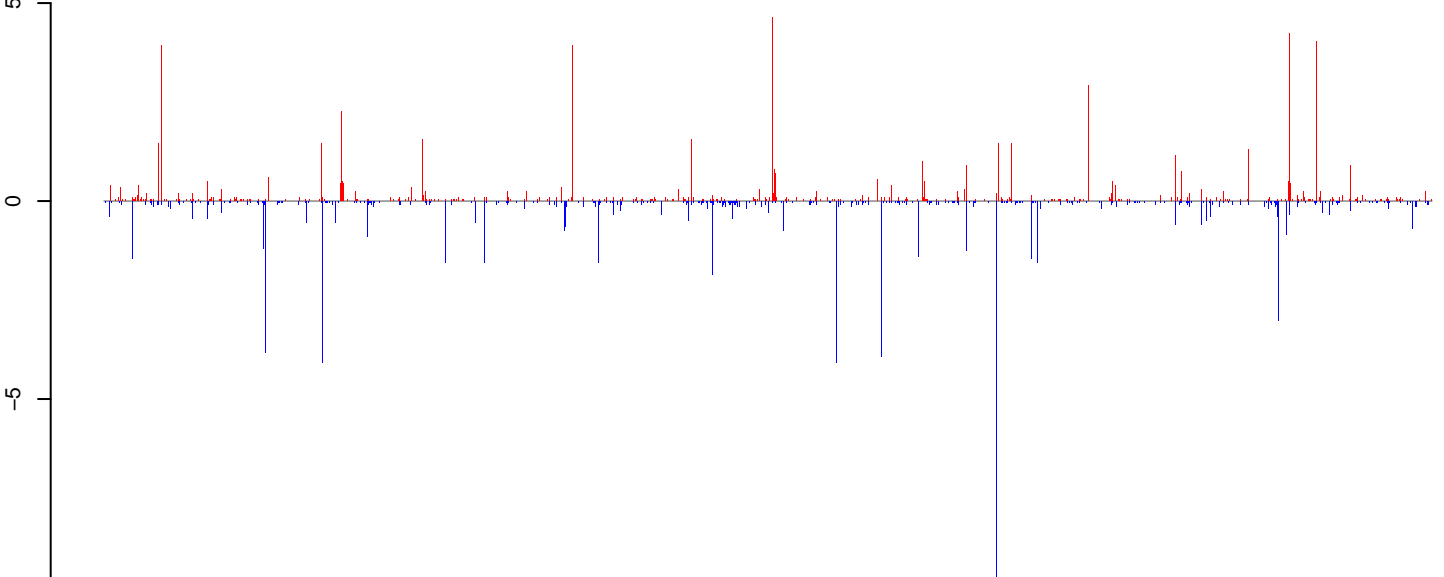
positive=64, negative=64, total=128

AeAlbo_FemaleWhole_Denv2_JG.24_35.rep



positive=26, negative=23, total=49

AeAlbo_FemaleWhole_Denv2_JG.rep

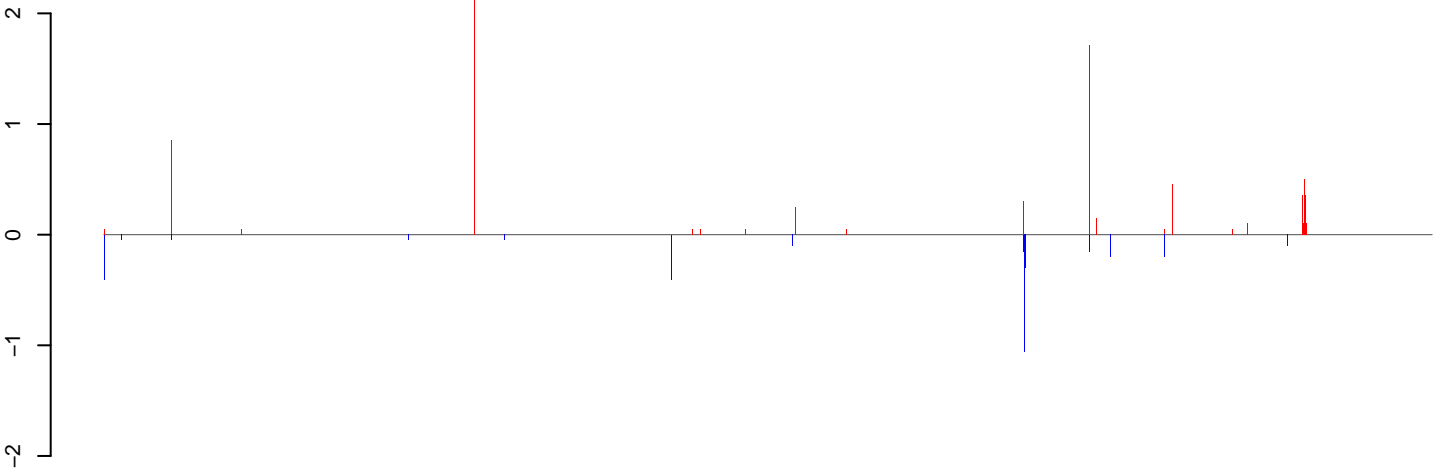


positive=90, negative=87, total=177

Window size=50, length=1049170, Wolbachia@Wolbachia_wUni:1-1049170

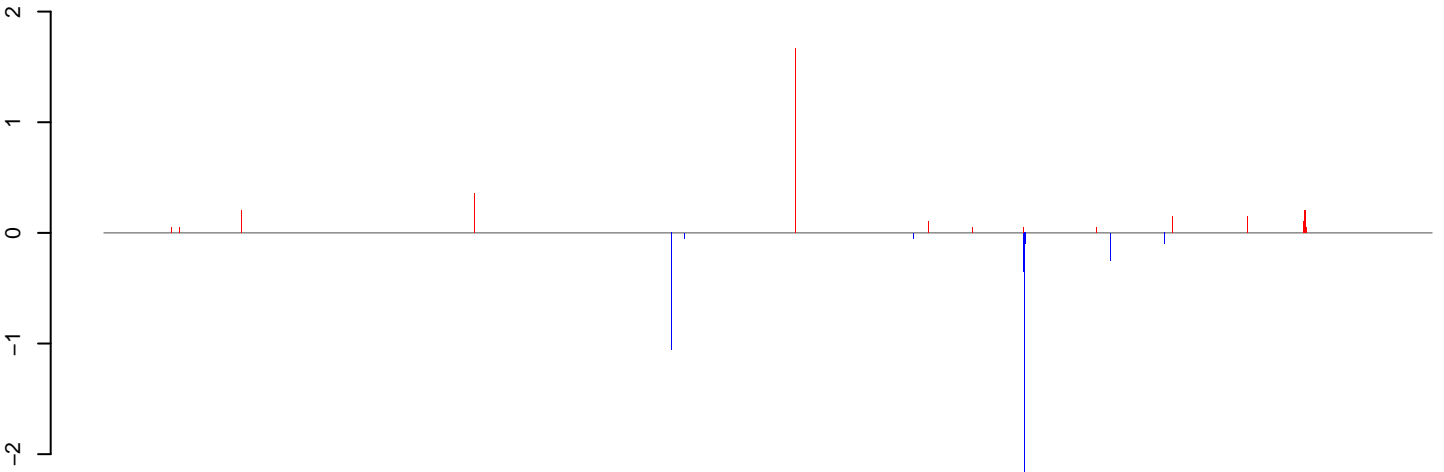
0e+00 2e+05 4e+05 6e+05 8e+05 1e+06

AeAlbo_FemaleWhole_Denv2_JG.18_23.rep



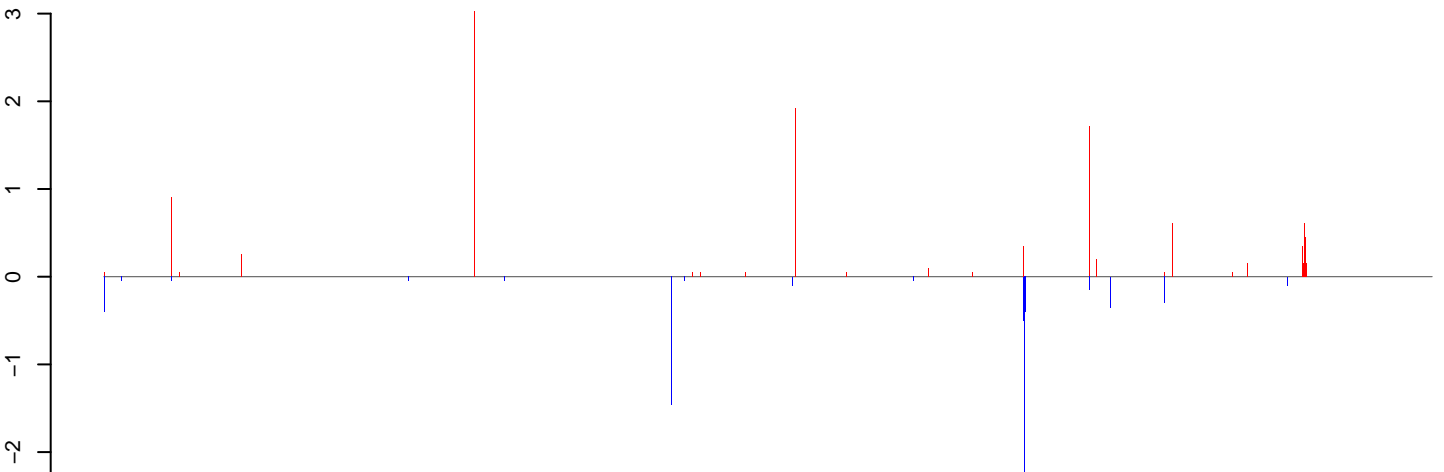
positive=10, negative=5, total=15

AeAlbo_FemaleWhole_Denv2_JG.24_35.rep



positive=4, negative=6, total=11

AeAlbo_FemaleWhole_Denv2_JG.rep



positive=15, negative=11, total=26

Window size=50, length=975127, Wolbachia@Wolbachia_wPpe:1-975127

0e+00 2e+05 4e+05 6e+05 8e+05 1e+06