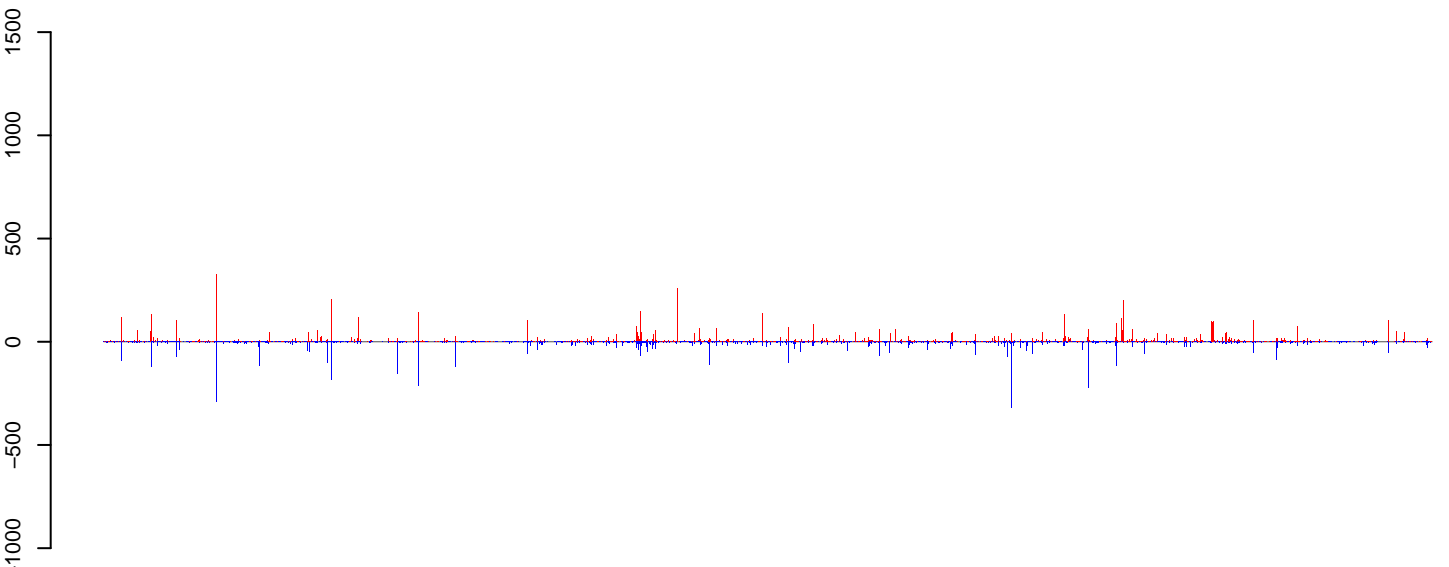
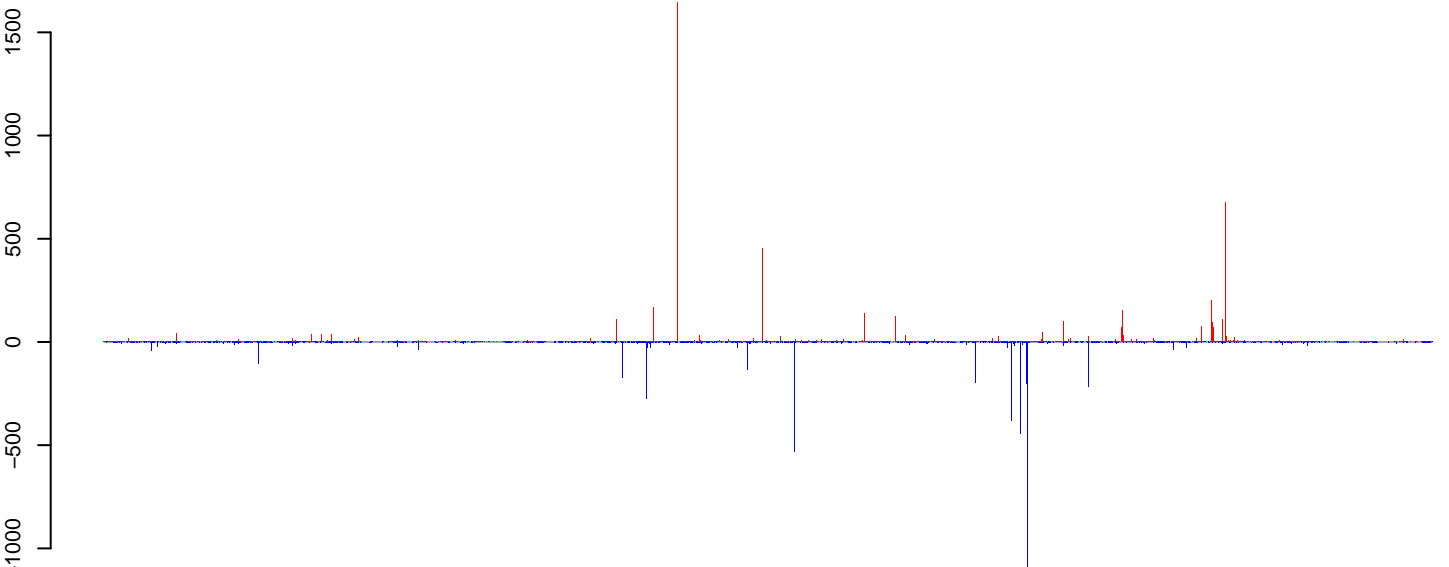


**AeAlbo\_C636\_cells.18\_23.rep**



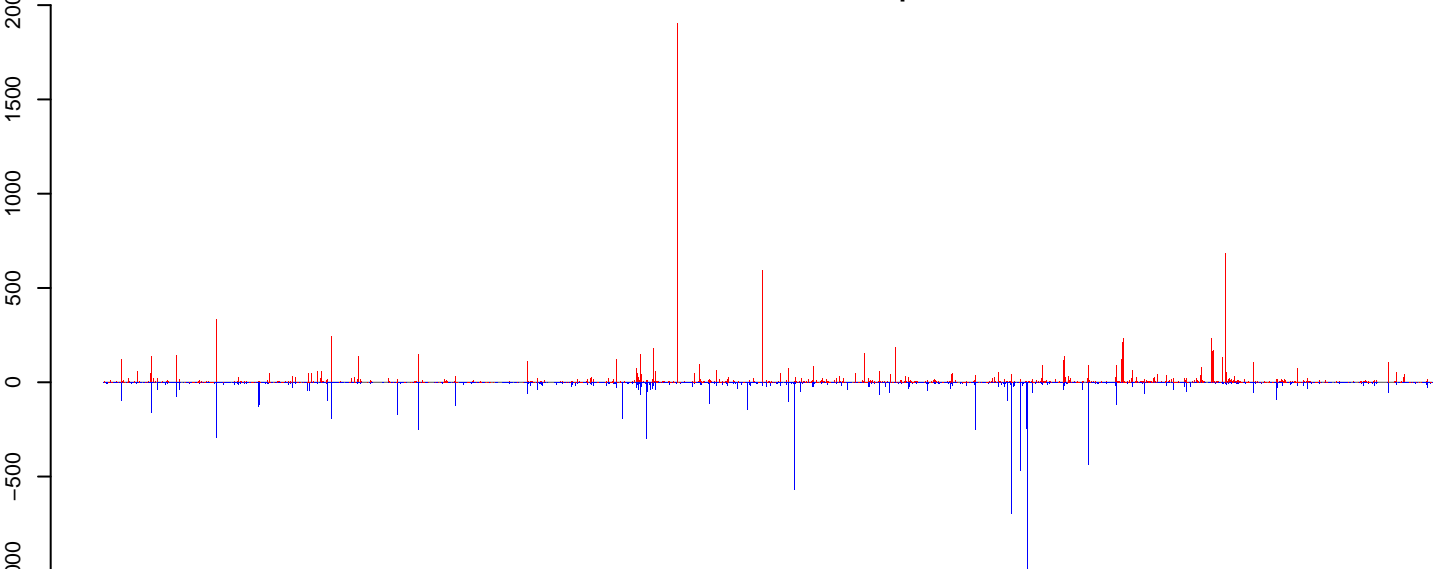
positive=15605, negative=12648, total=28253

**AeAlbo\_C636\_cells.24\_35.rep**



positive=9609, negative=7067, total=16676

**AeAlbo\_C636\_cells.rep**

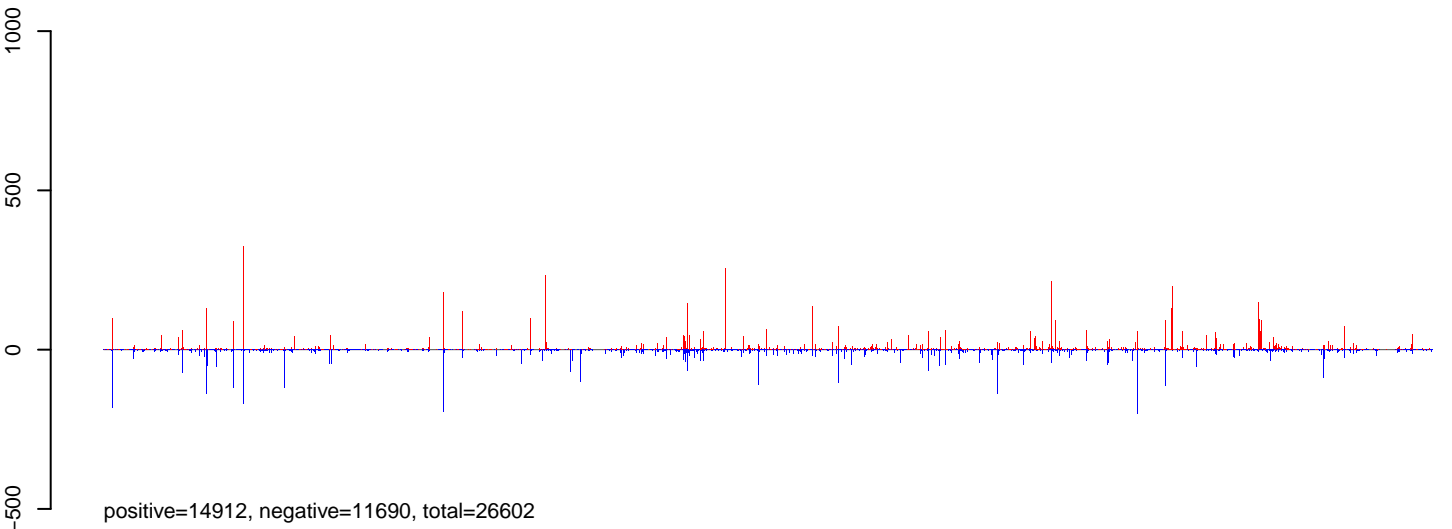


positive=25214, negative=19715, total=44929

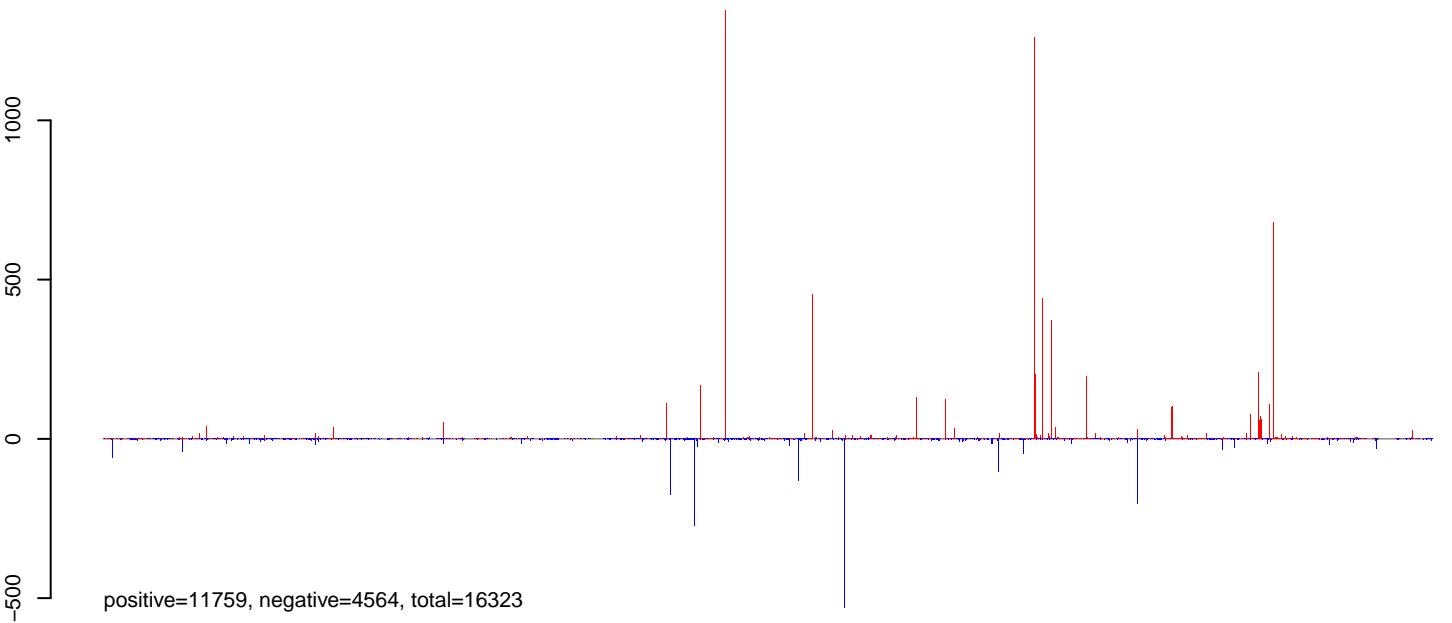
Window size=50, length=1482455, Wolbachia@Wolbachia\_wPip:1-1482455

0 500000 1000000 1500000

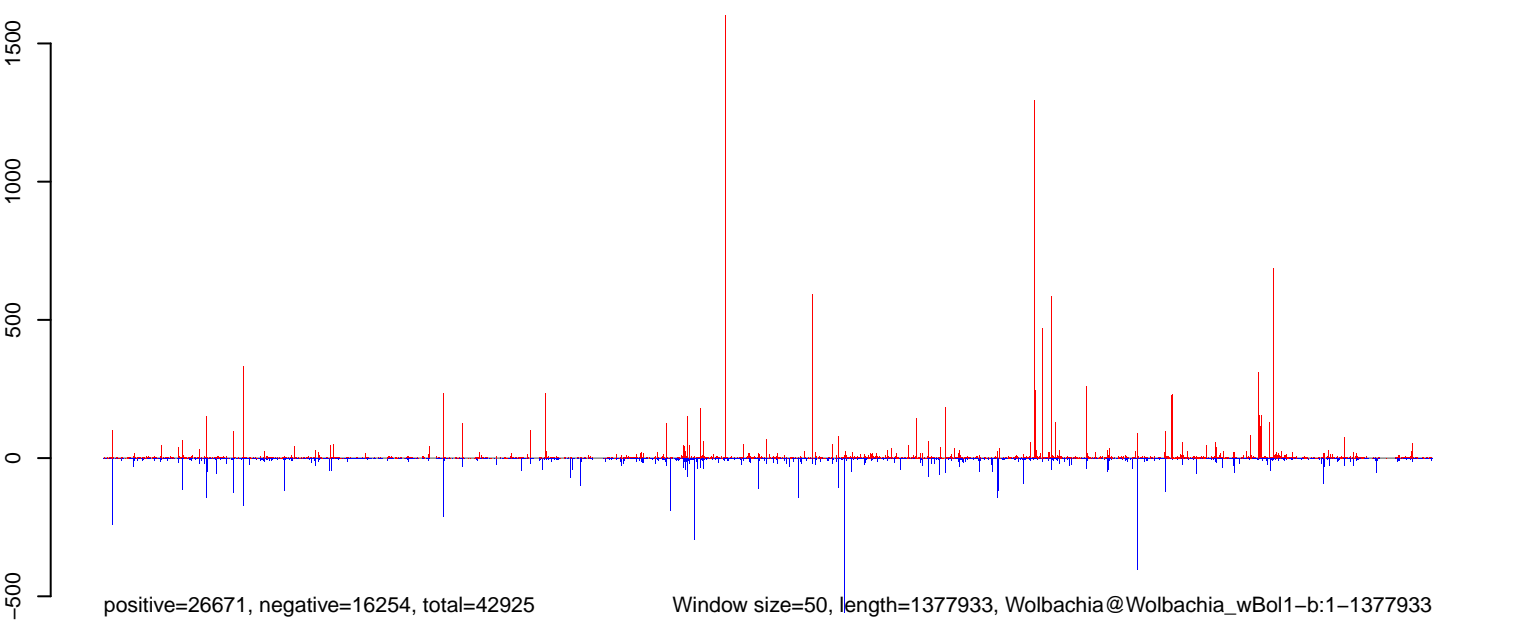
**AeAlbo\_C636\_cells.18\_23.rep**



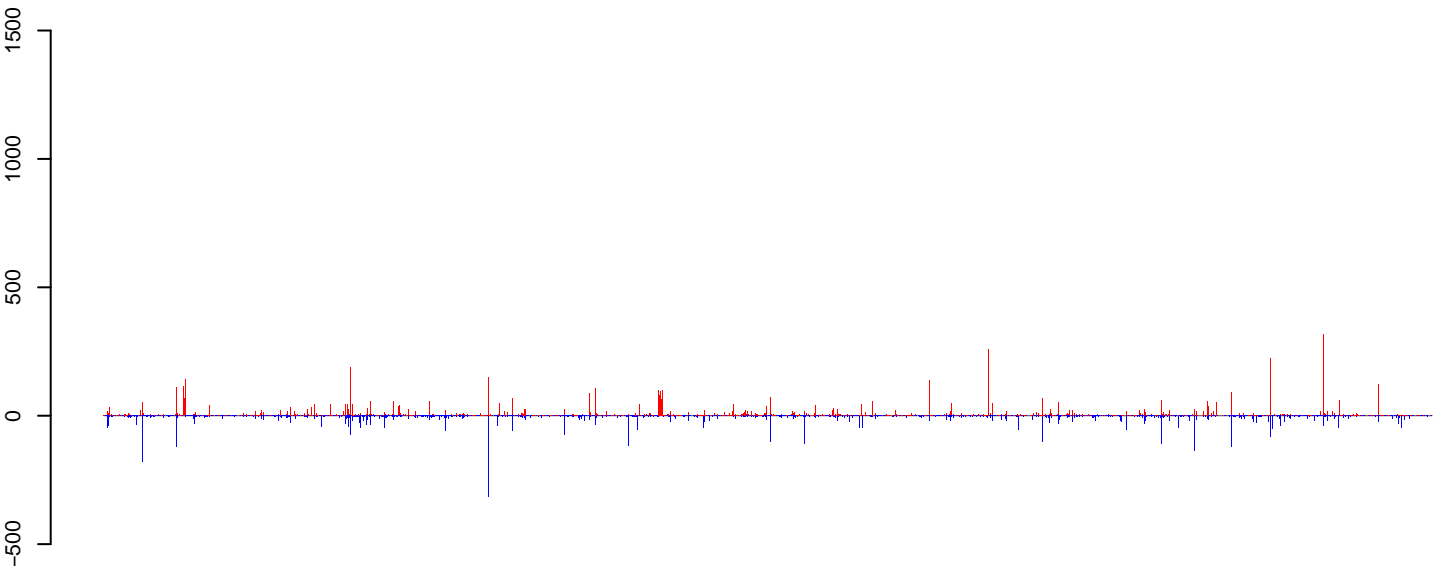
**AeAlbo\_C636\_cells.24\_35.rep**



**AeAlbo\_C636\_cells.rep**

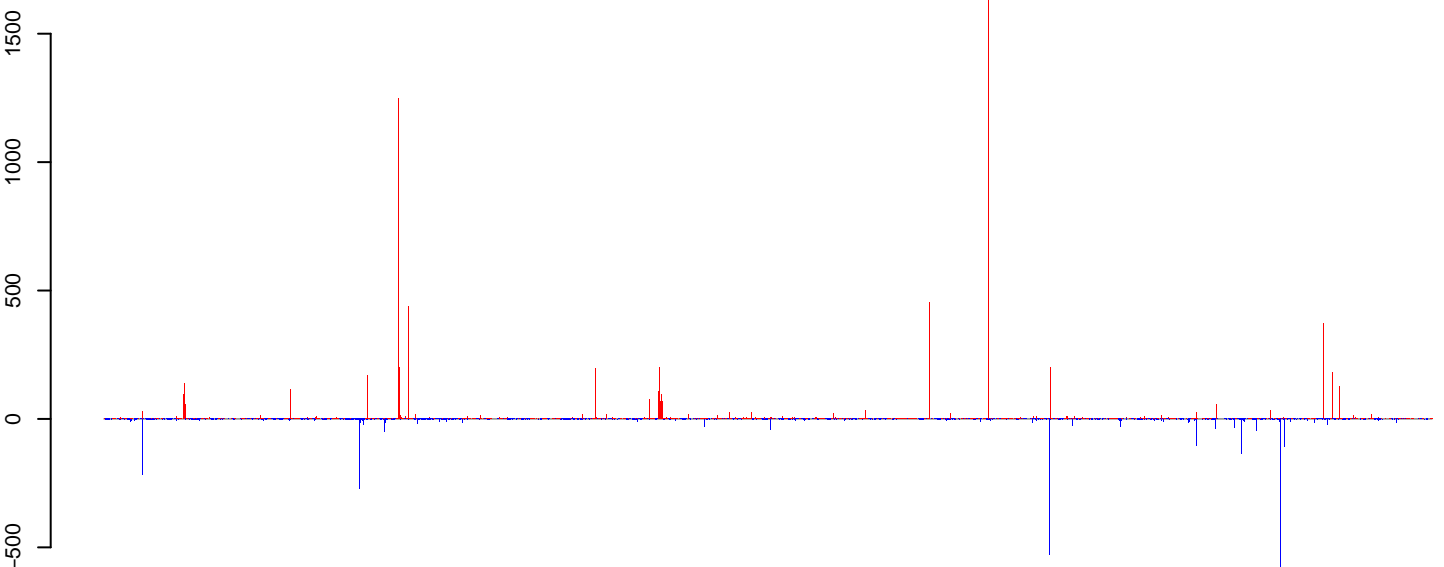


**AeAlbo\_C636\_cells.18\_23.rep**



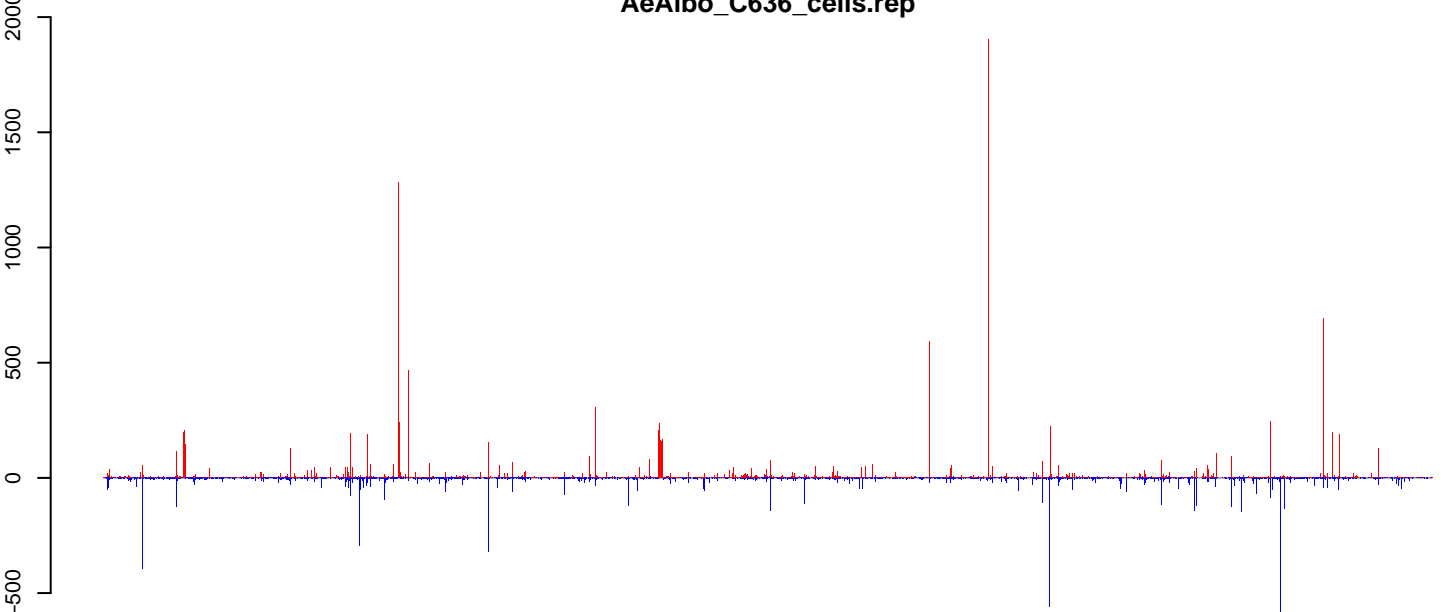
positive=13969, negative=11010, total=24979

**AeAlbo\_C636\_cells.24\_35.rep**



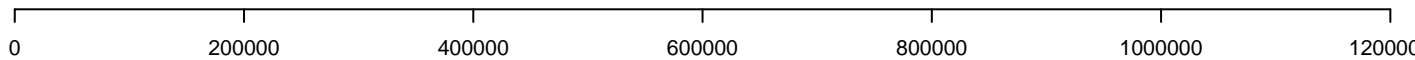
positive=11110, negative=5013, total=16123

**AeAlbo\_C636\_cells.rep**

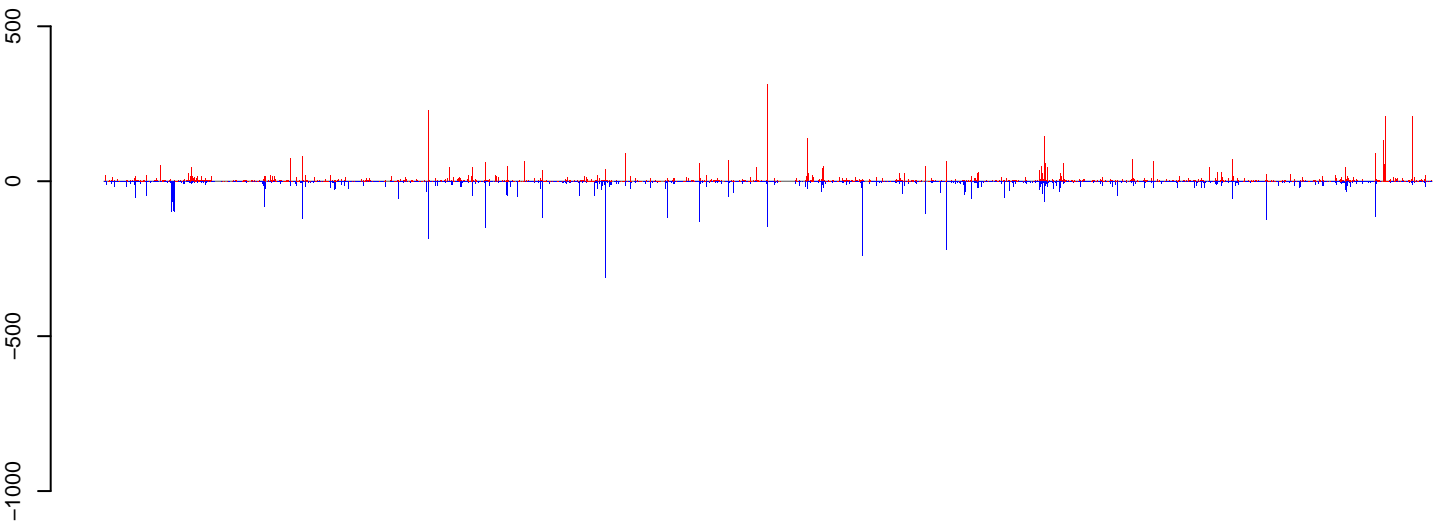


positive=25079, negative=16023, total=41102

Window size=50, length=1158805, Wolbachia@Wolbachia\_wAus:1-1158805

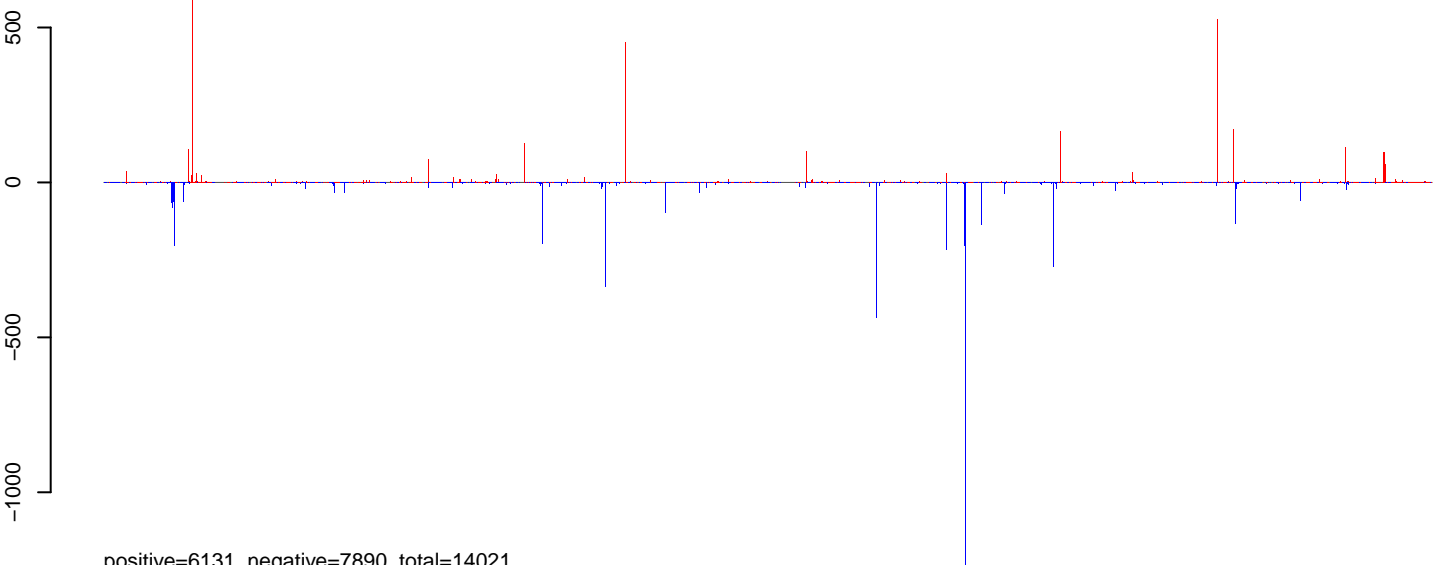


**AeAlbo\_C636\_cells.18\_23.rep**



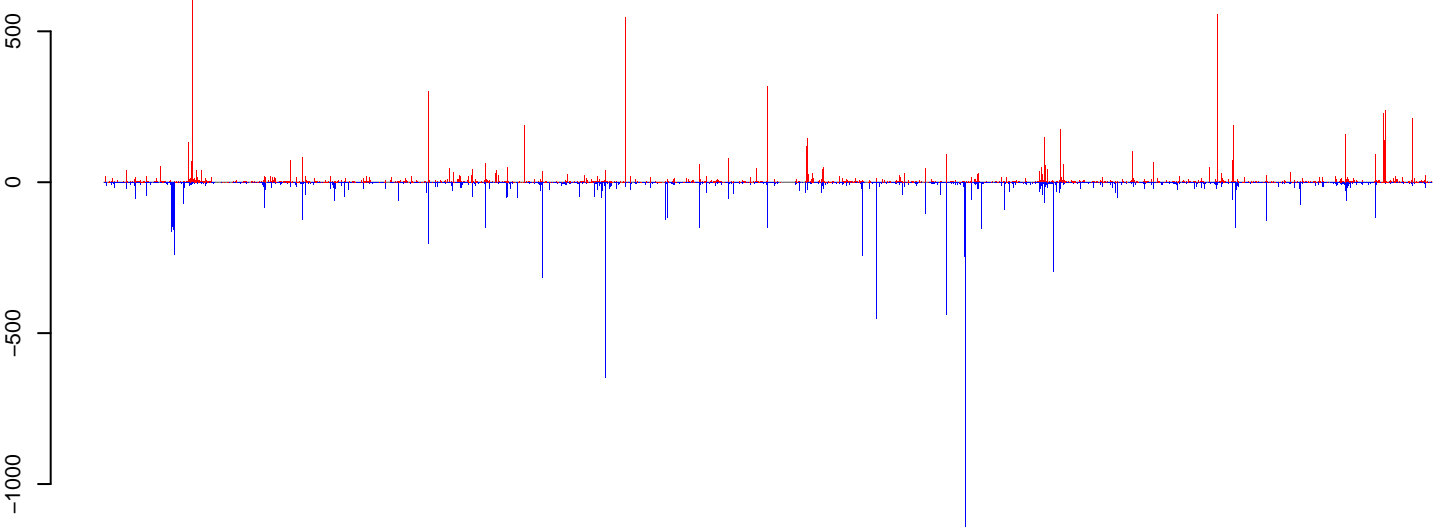
positive=11610, negative=12924, total=24535

**AeAlbo\_C636\_cells.24\_35.rep**



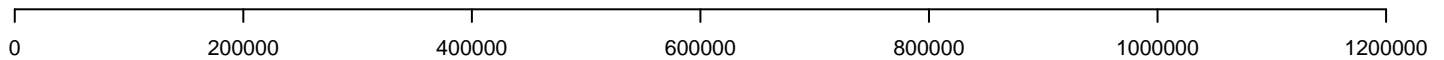
positive=6131, negative=7890, total=14021

**AeAlbo\_C636\_cells.rep**

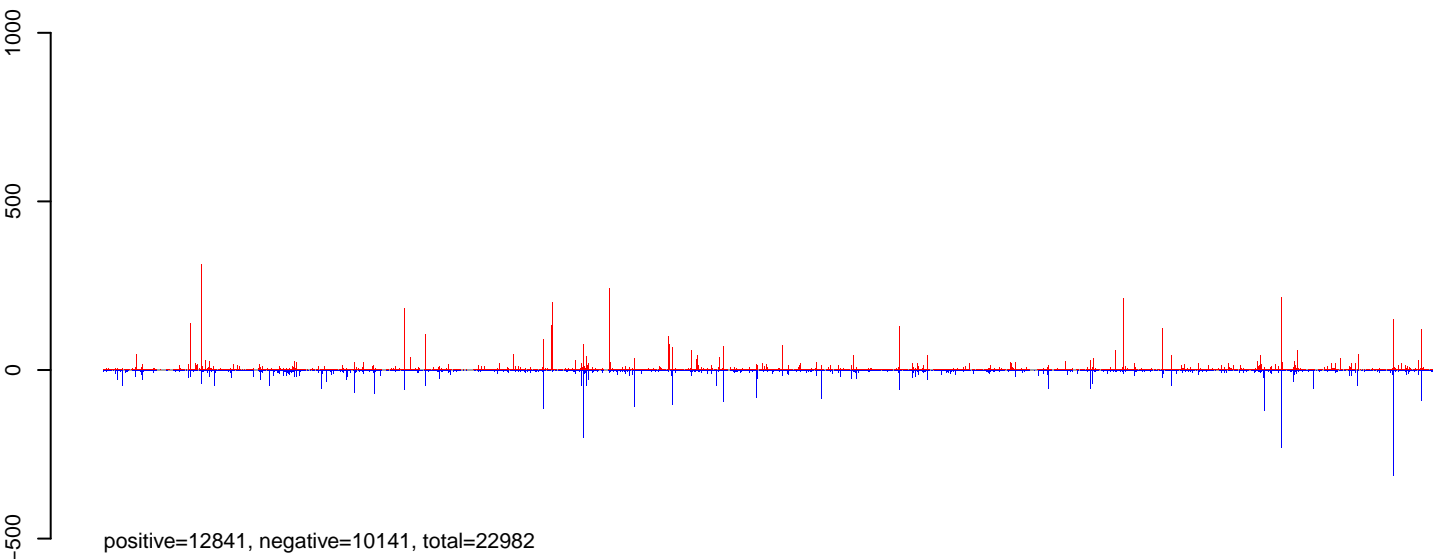


positive=17741, negative=20815, total=38556

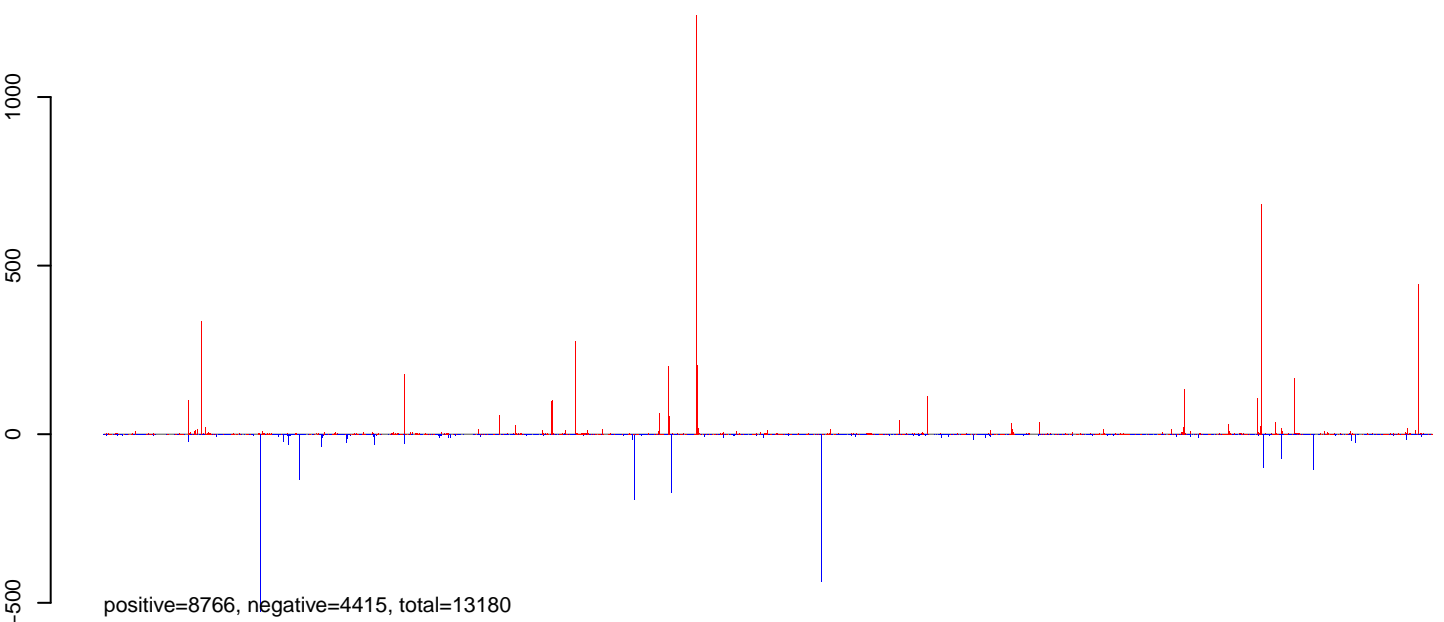
Window size=50, length=1162431, Wolbachia@Wolbachia\_wAlbB:1-1162431



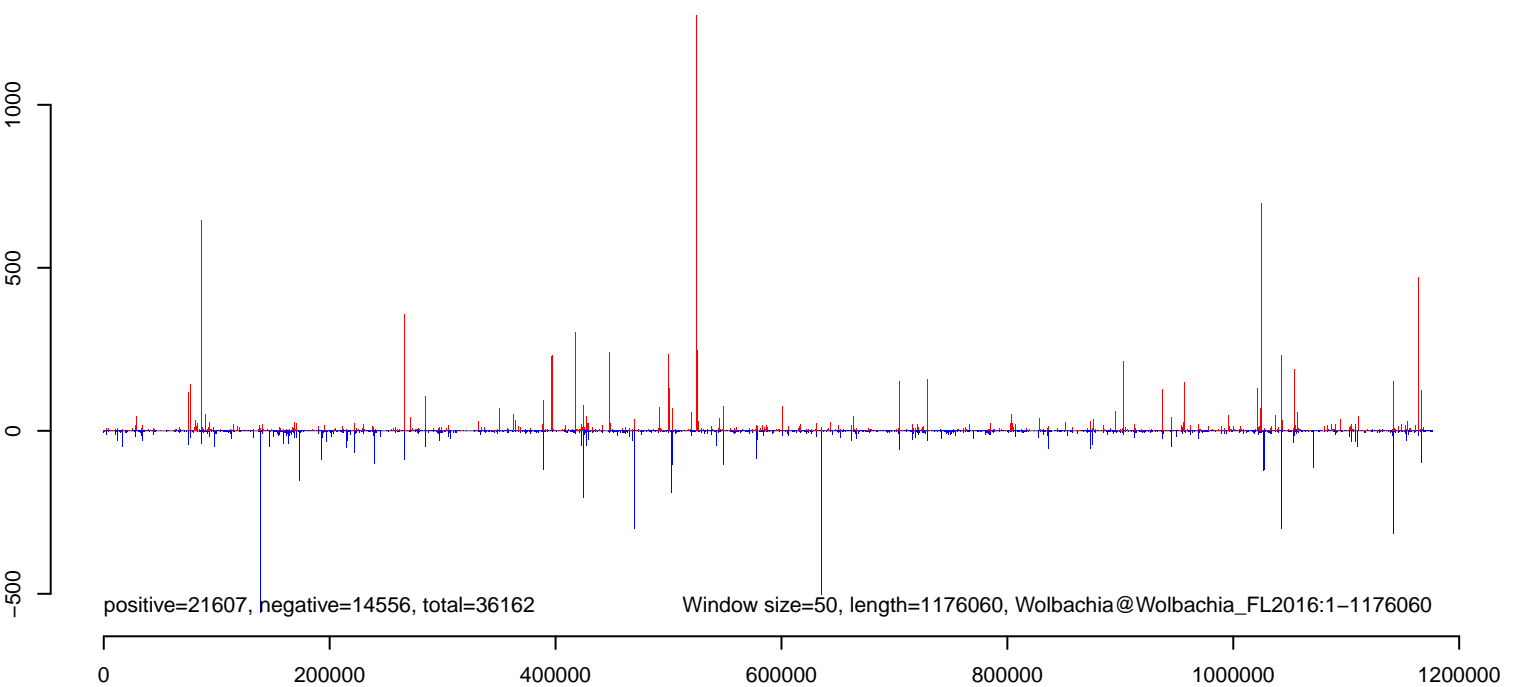
**AeAlbo\_C636\_cells.18\_23.rep**



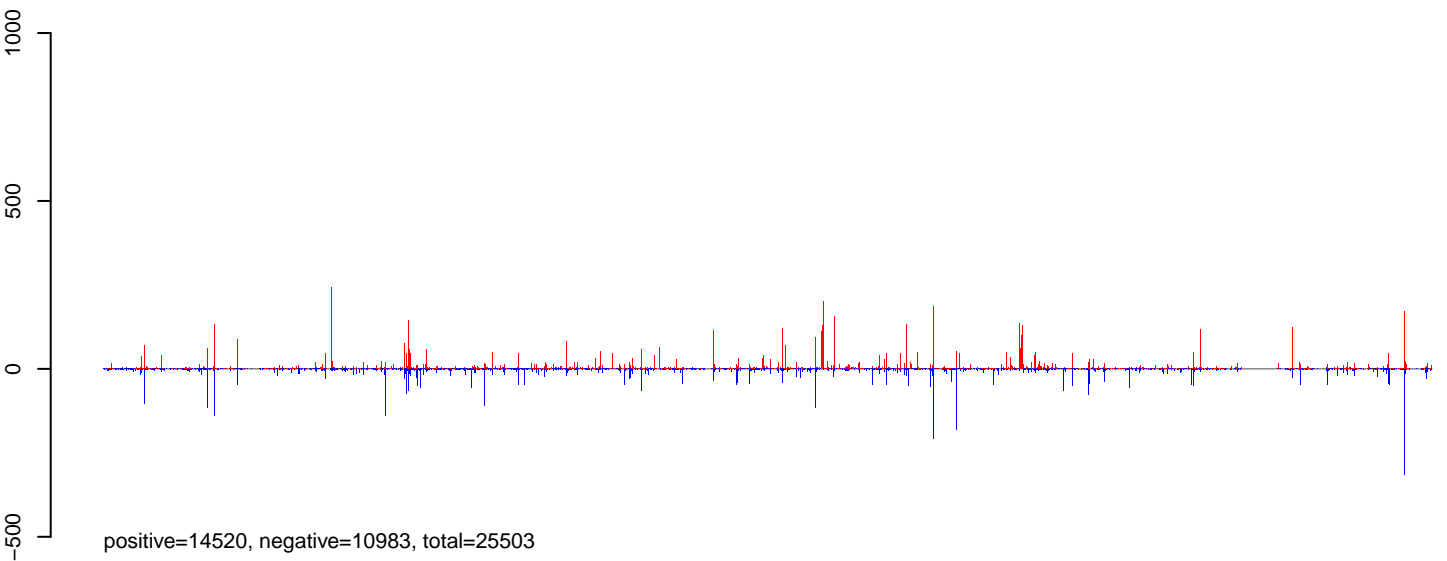
**AeAlbo\_C636\_cells.24\_35.rep**



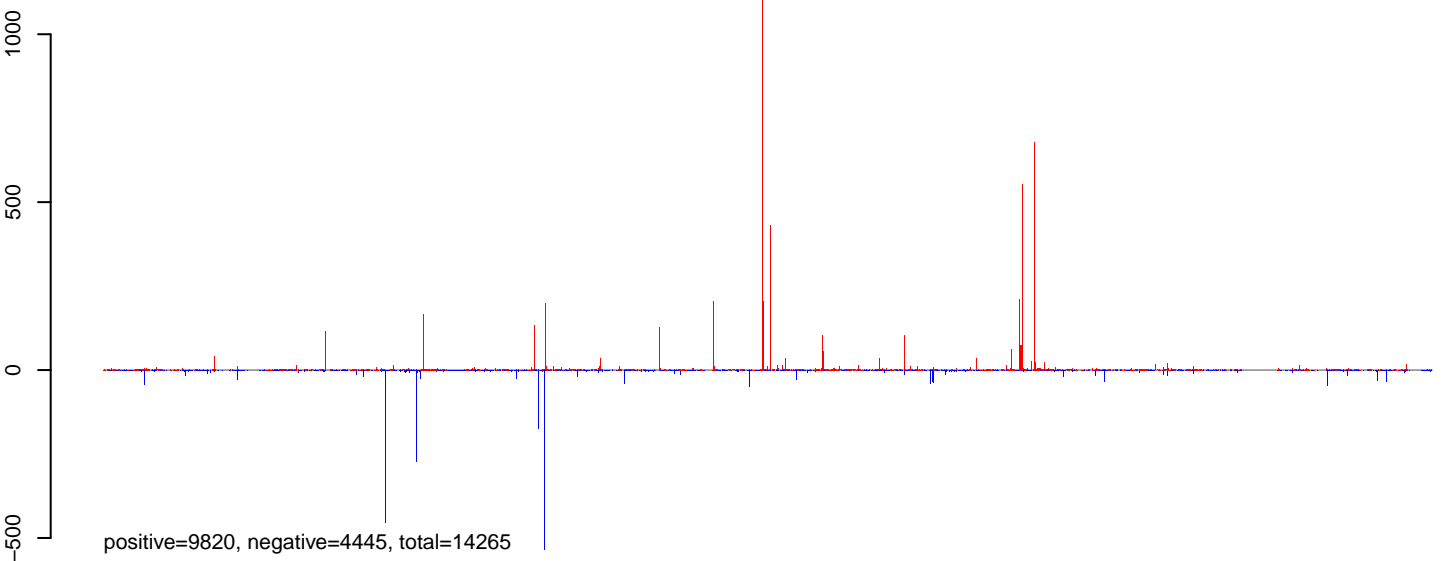
**AeAlbo\_C636\_cells.rep**



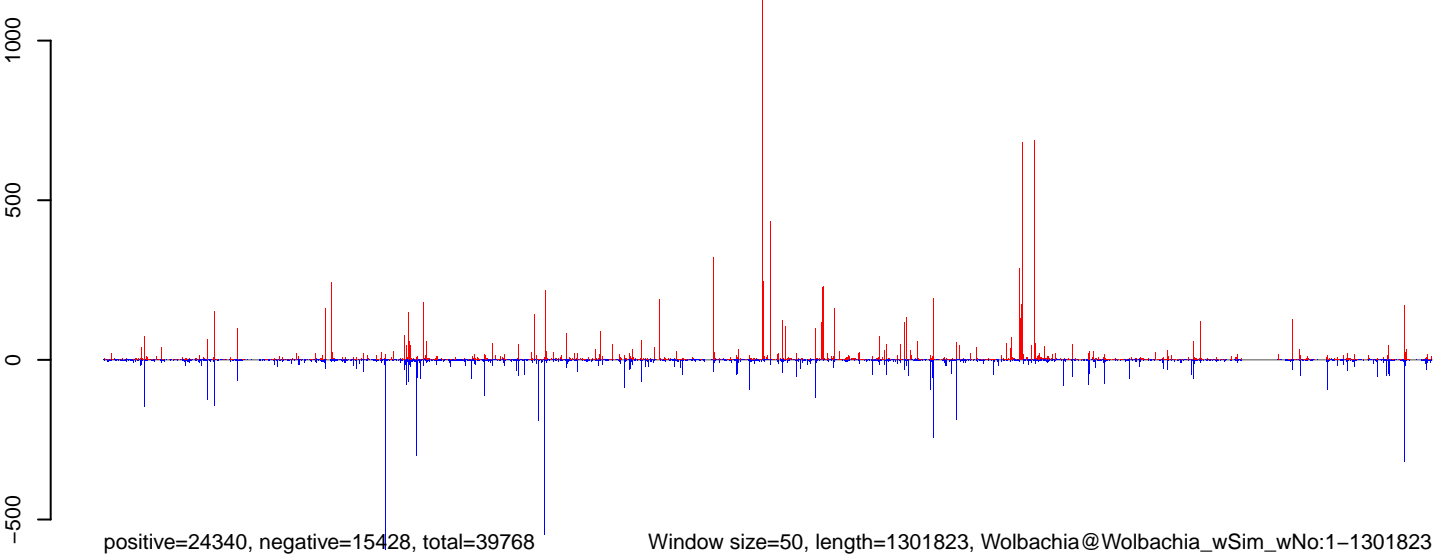
**AeAlbo\_C636\_cells.18\_23.rep**



**AeAlbo\_C636\_cells.24\_35.rep**

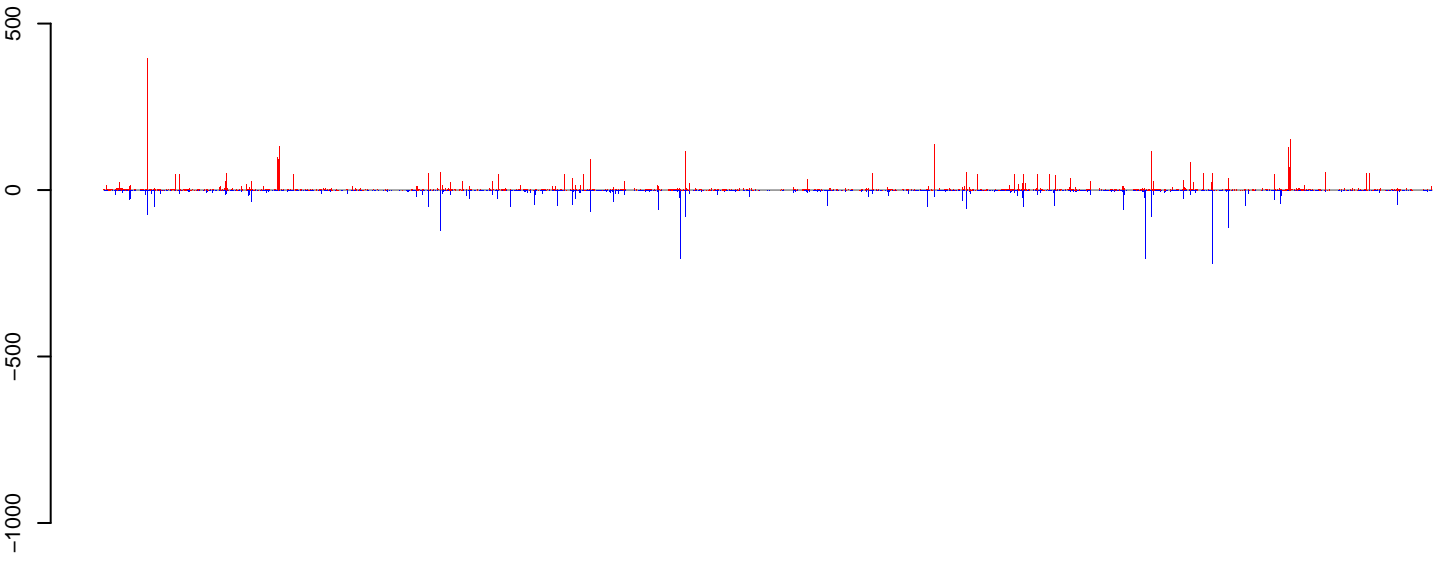


**AeAlbo\_C636\_cells.rep**



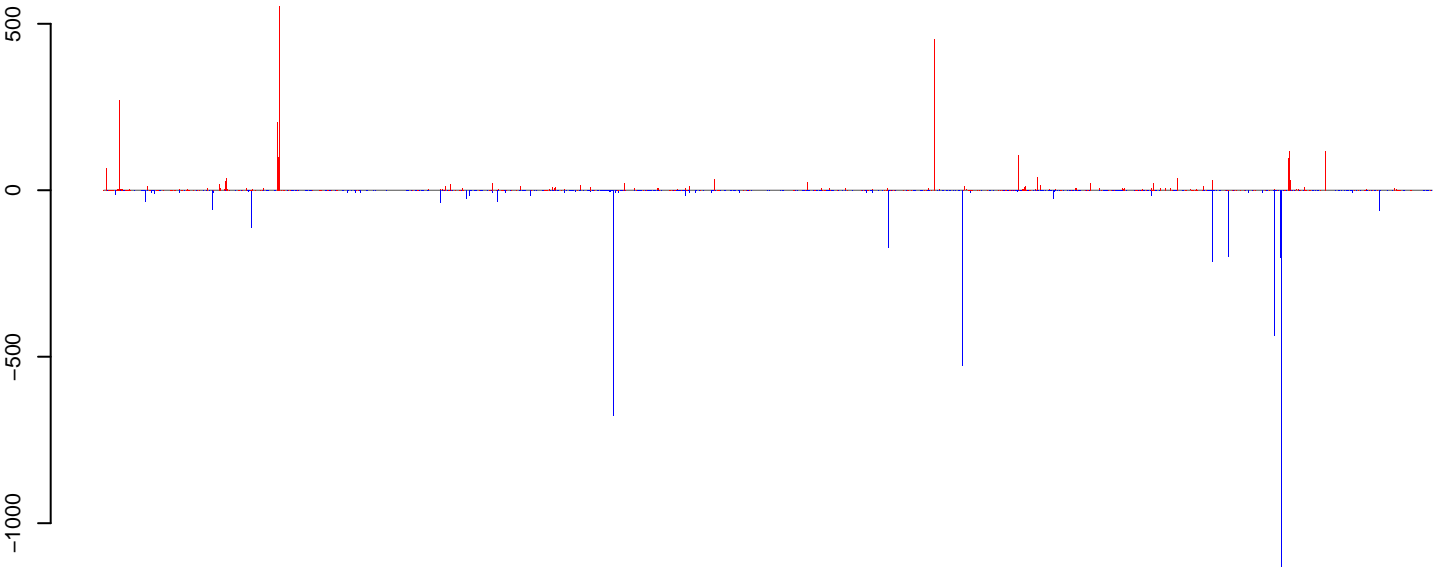
0 200000 400000 600000 800000 1000000 1200000

**AeAlbo\_C636\_cells.18\_23.rep**



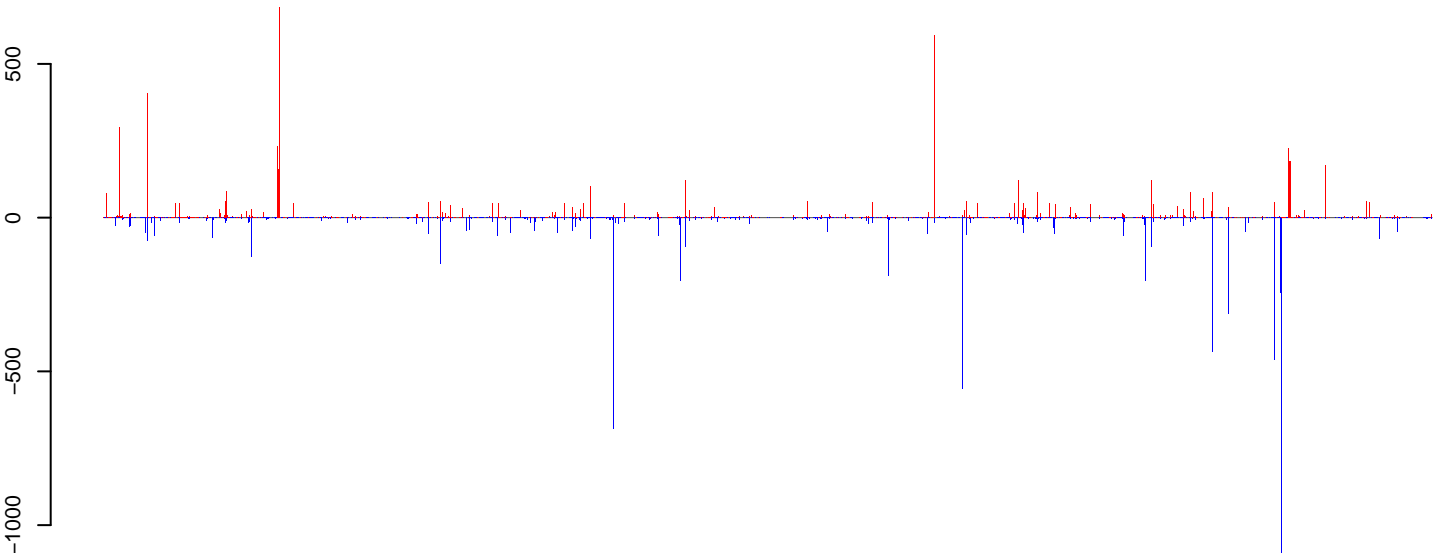
positive=7818, negative=5034, total=12851

**AeAlbo\_C636\_cells.24\_35.rep**



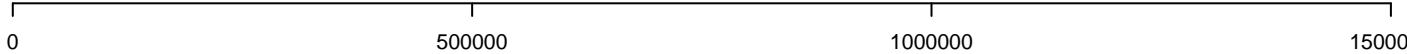
positive=5292, negative=4972, total=10264

**AeAlbo\_C636\_cells.rep**

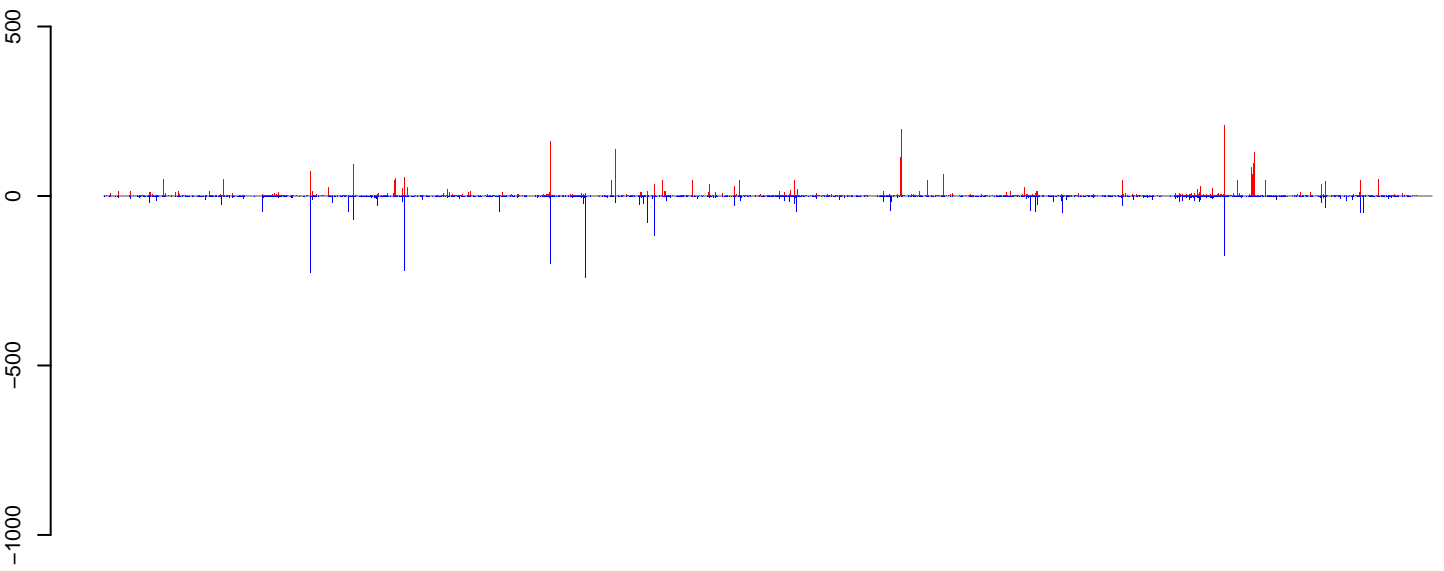


positive=13110, negative=10006, total=23116

Window size=50, length=1445873, Wolbachia@Wolbachia\_wRi:1-1445873

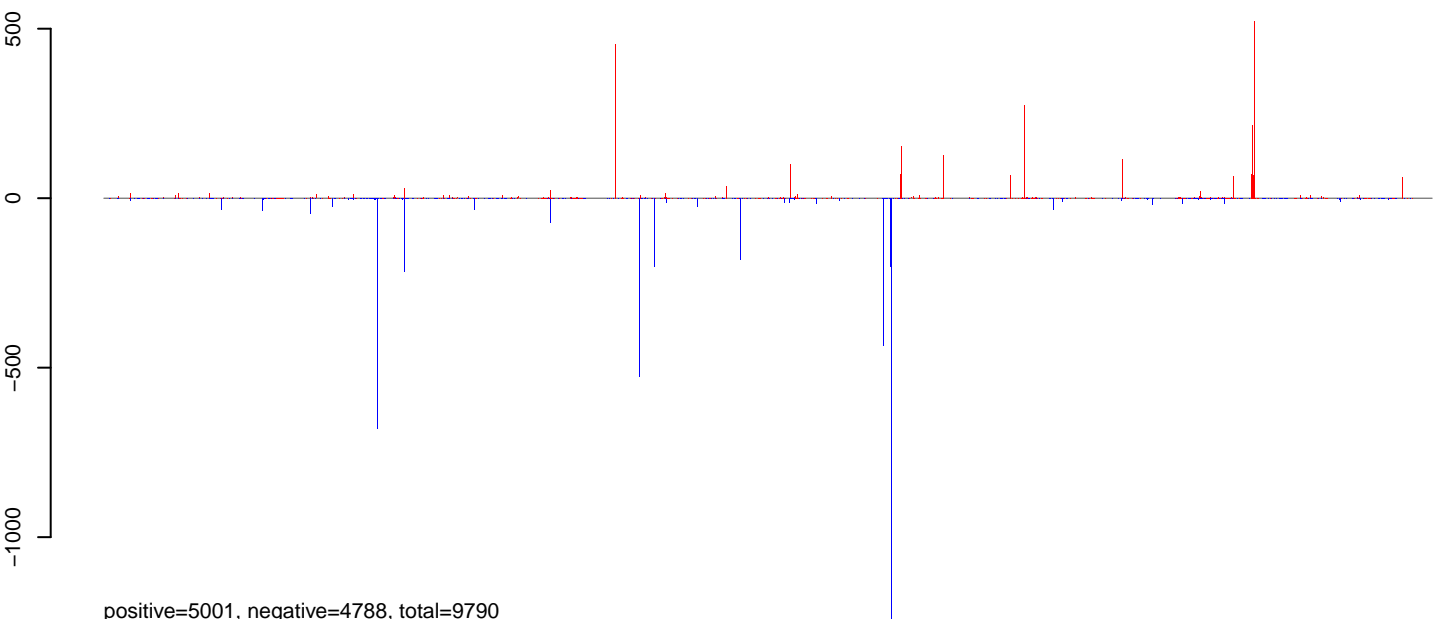


**AeAlbo\_C636\_cells.18\_23.rep**



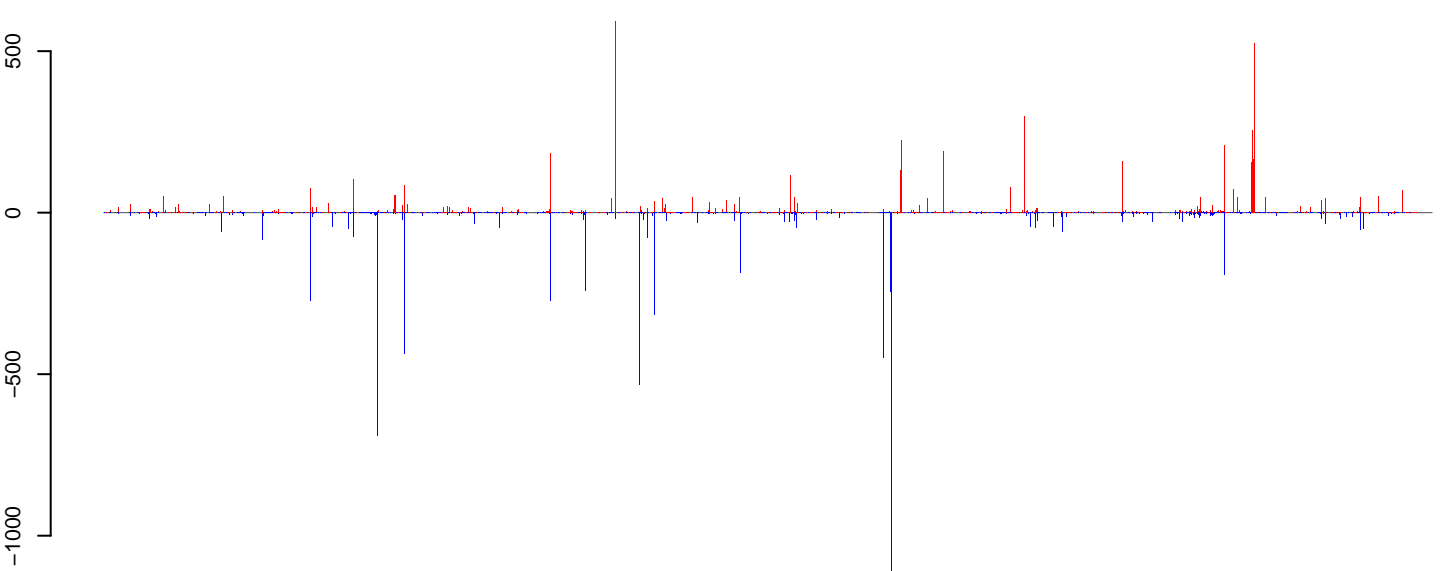
positive=6787, negative=4489, total=11276

**AeAlbo\_C636\_cells.24\_35.rep**



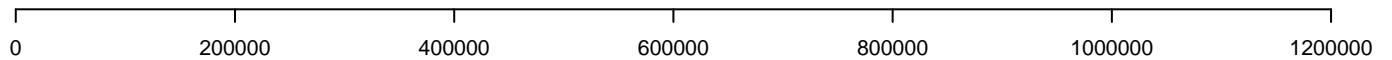
positive=5001, negative=4788, total=9790

**AeAlbo\_C636\_cells.rep**



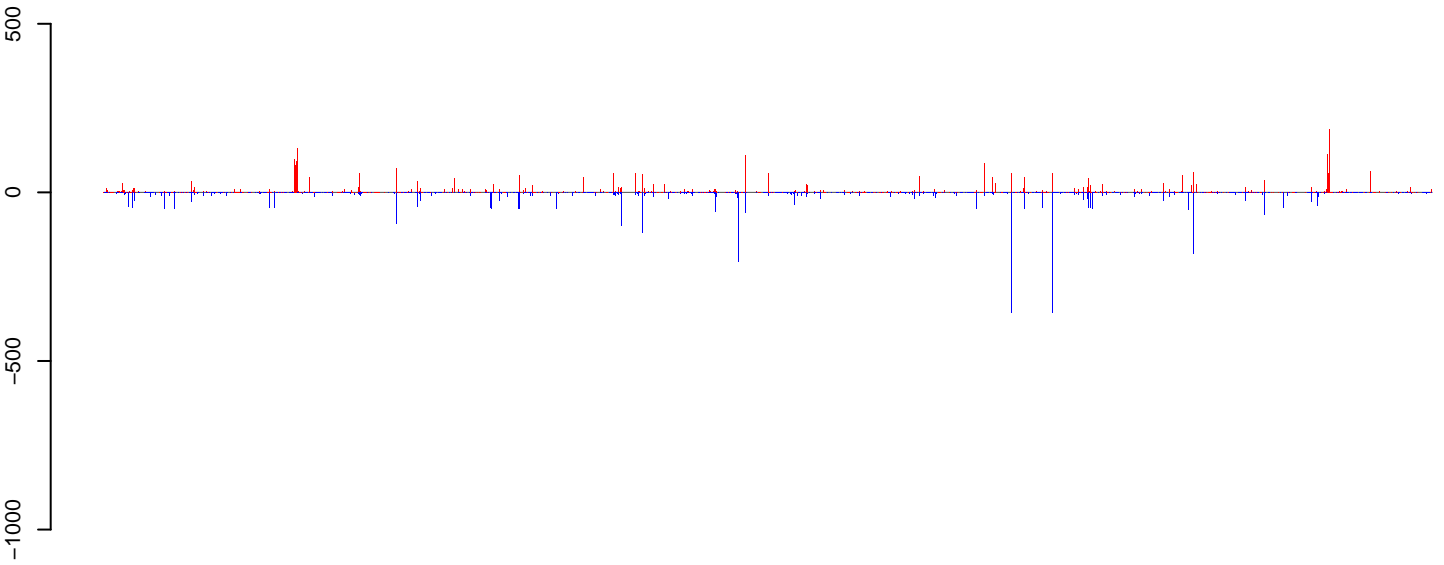
positive=11789, negative=9278, total=21066

Window size=50, length=1211929, Wolbachia@Wolbachia\_wVitA:1-1211929



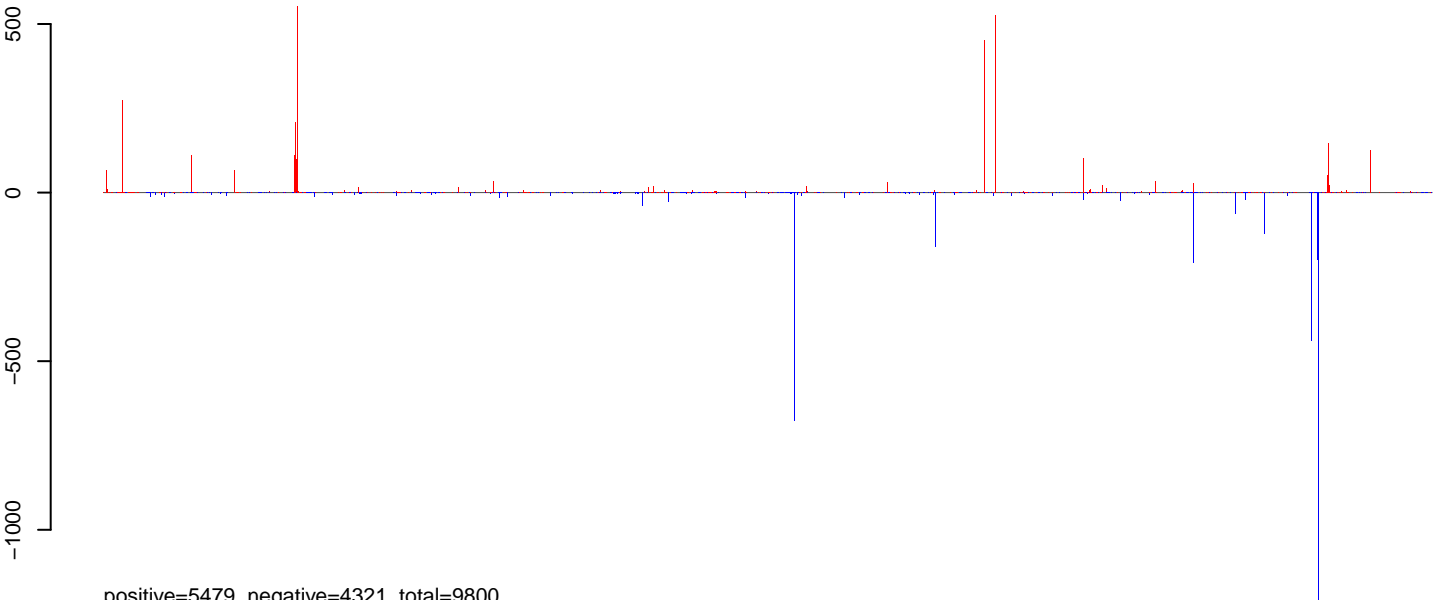


**AeAlbo\_C636\_cells.18\_23.rep**



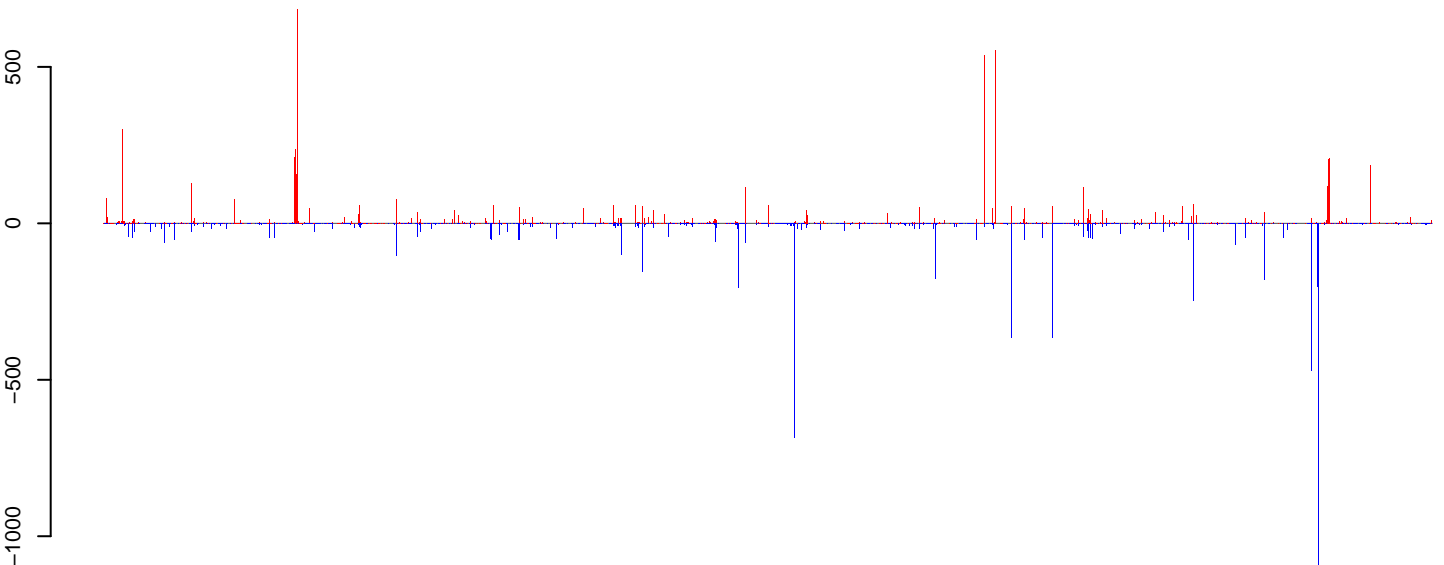
positive=6525, negative=5866, total=12391

**AeAlbo\_C636\_cells.24\_35.rep**



positive=5479, negative=4321, total=9800

**AeAlbo\_C636\_cells.rep**

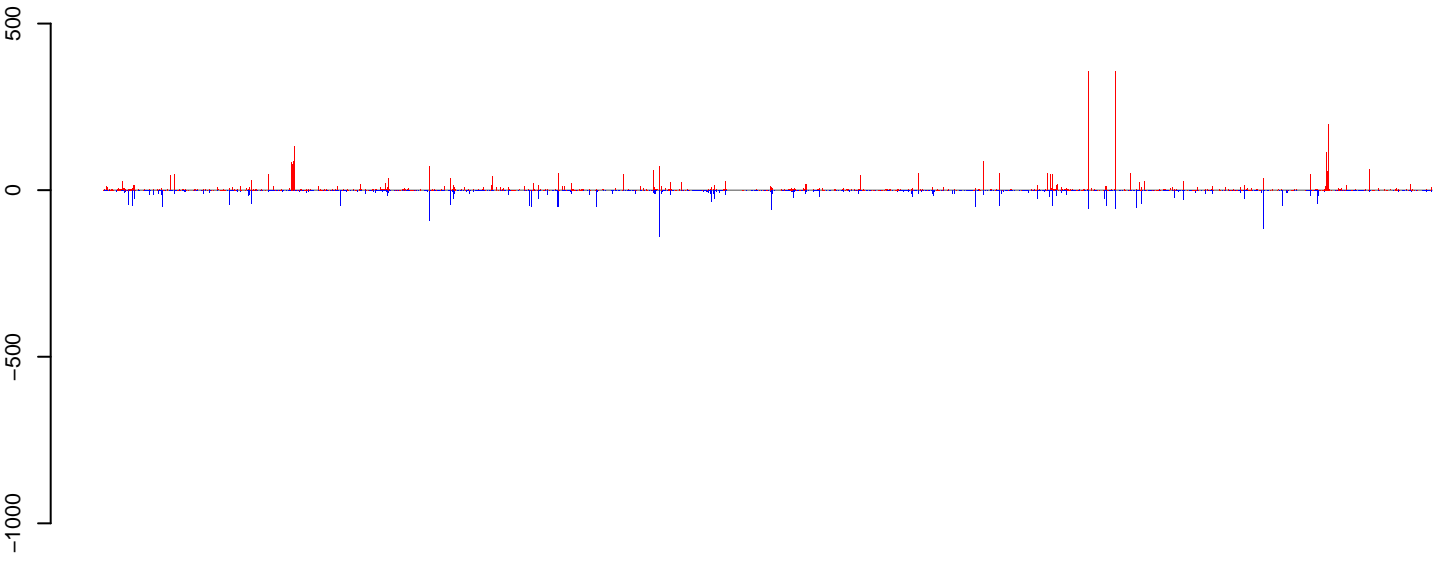


positive=12004, negative=10187, total=22191

Window size=50, length=1267782, Wolbachia@Wolbachia\_wMel:1-1267782

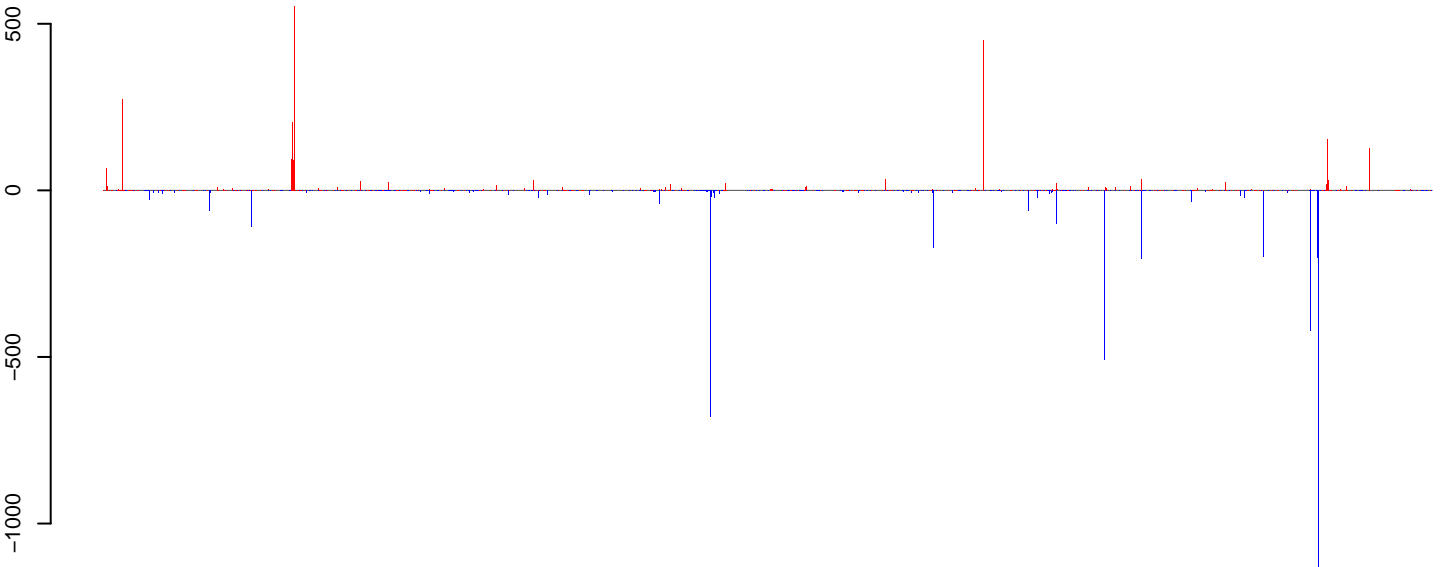
0 200000 400000 600000 800000 1000000 1200000

**AeAlbo\_C636\_cells.18\_23.rep**



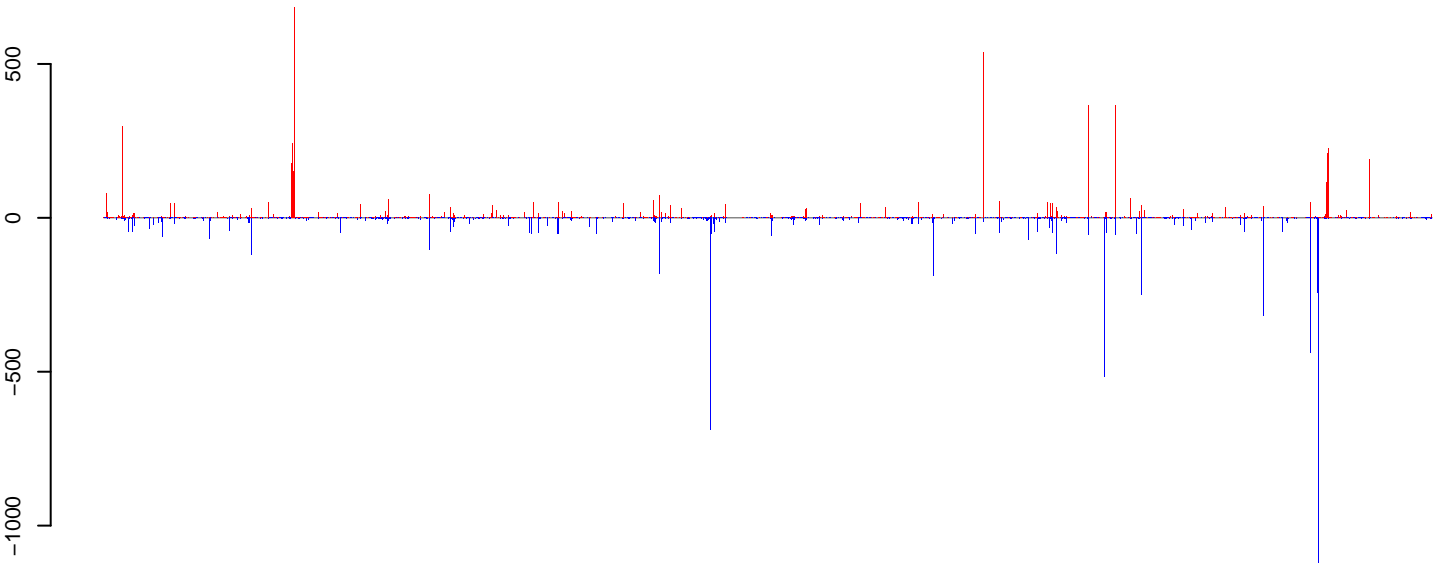
positive=7109, negative=4291, total=11399

**AeAlbo\_C636\_cells.24\_35.rep**



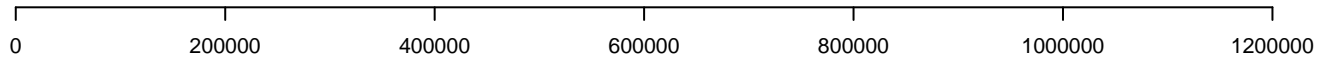
positive=4714, negative=5043, total=9757

**AeAlbo\_C636\_cells.rep**

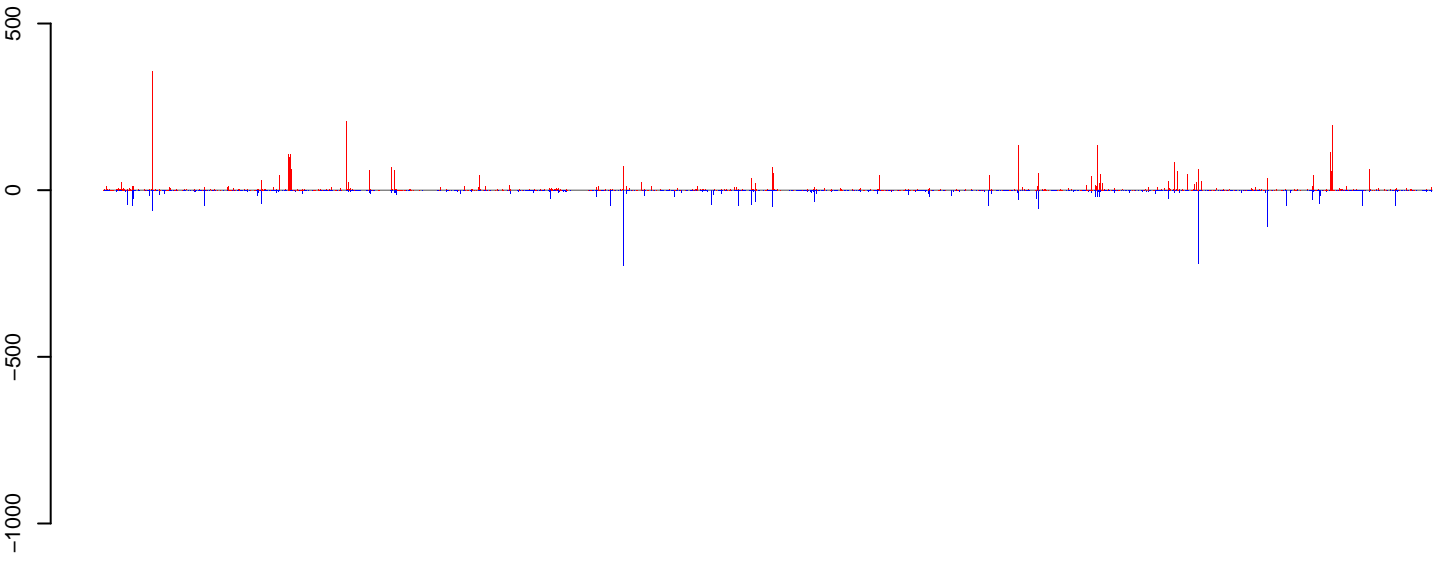


positive=11823, negative=9334, total=21156

Window size=50, length=1268461, Wolbachia@Wolbachia\_wSim\_wAu:1-1268461

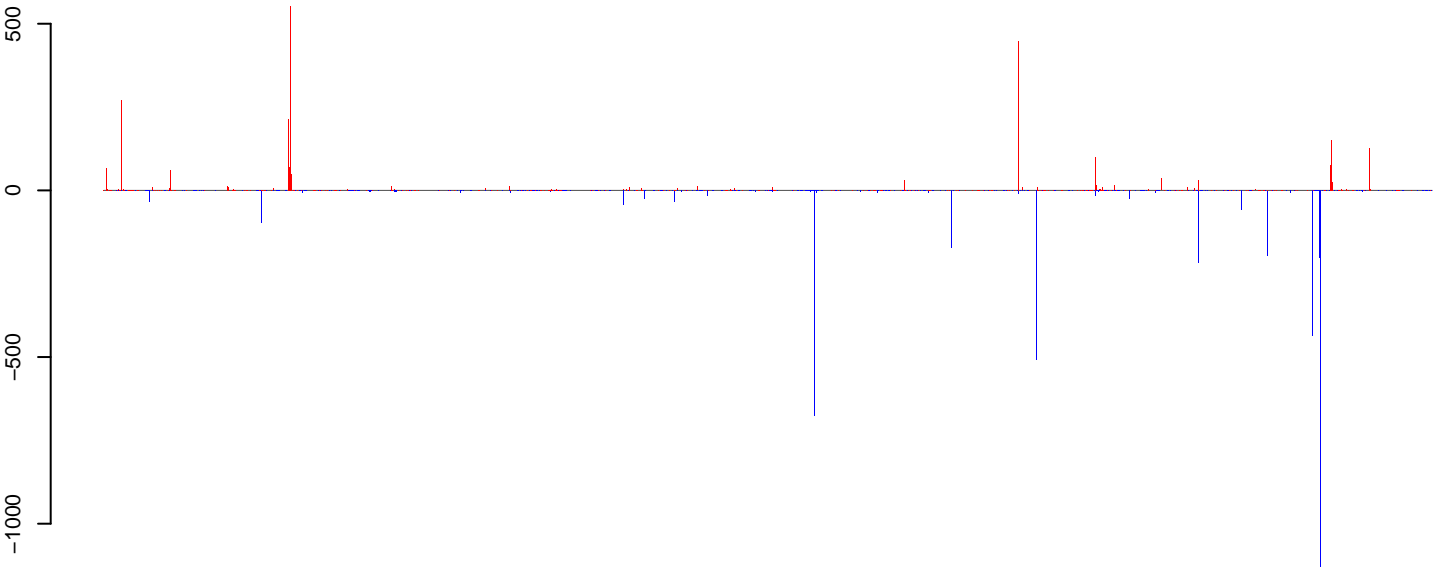


**AeAlbo\_C636\_cells.18\_23.rep**



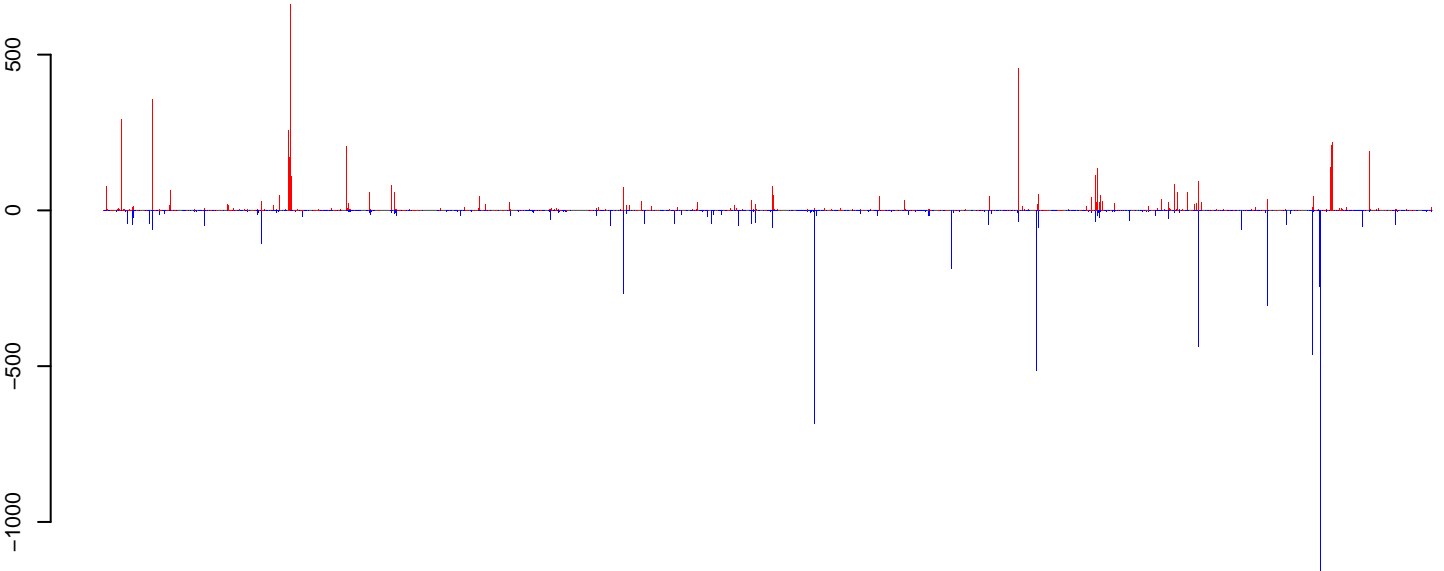
positive=6415, negative=3651, total=10066

**AeAlbo\_C636\_cells.24\_35.rep**



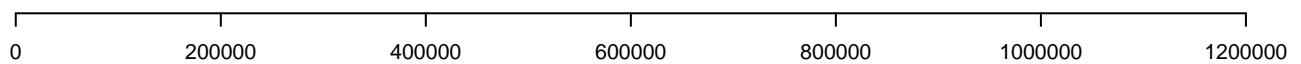
positive=4652, negative=4702, total=9354

**AeAlbo\_C636\_cells.rep**

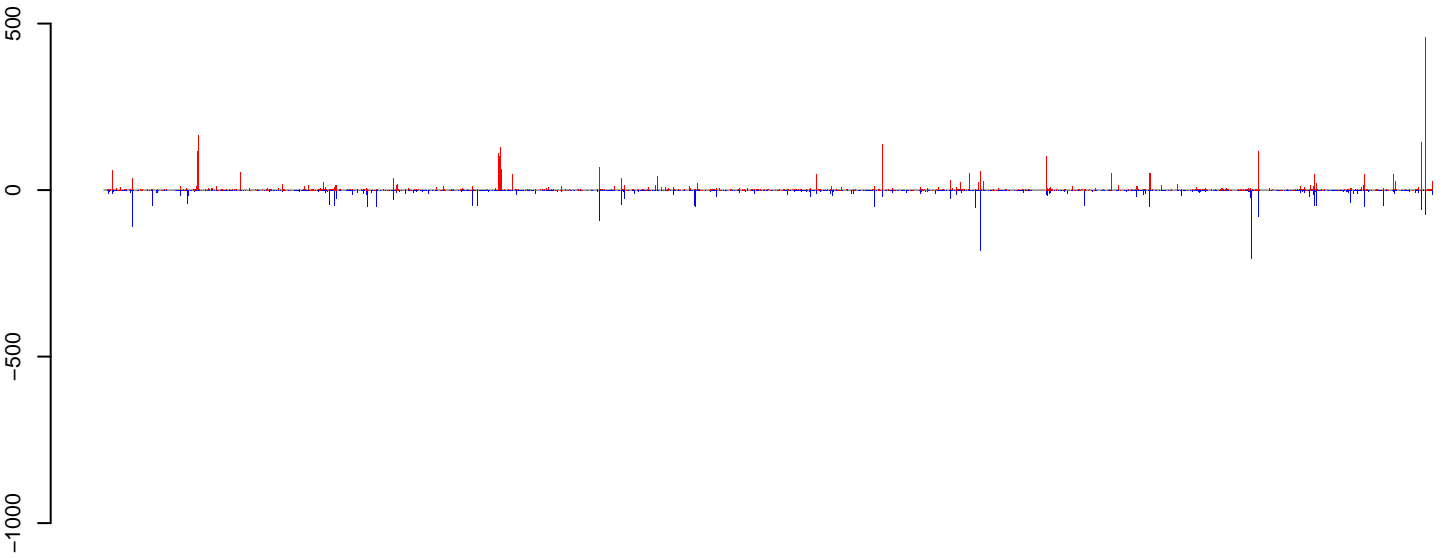


positive=11067, negative=8353, total=19420

Window size=50, length=1295804, Wolbachia@Wolbachia\_wSim\_wHa:1-1295804

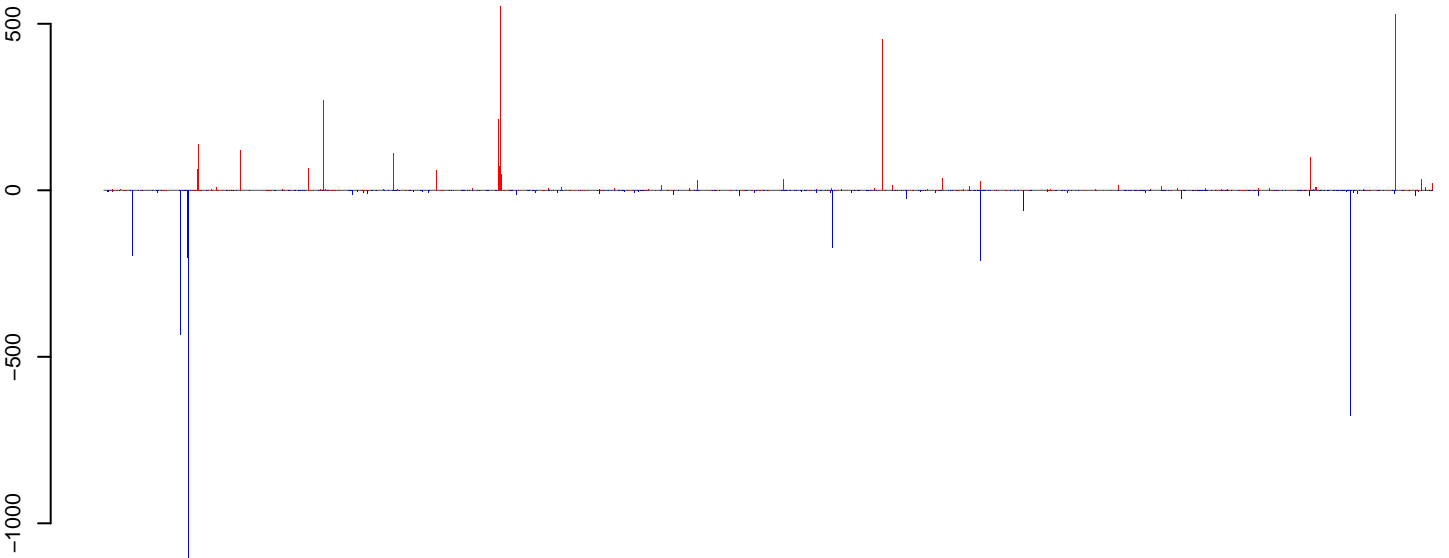


**AeAlbo\_C636\_cells.18\_23.rep**



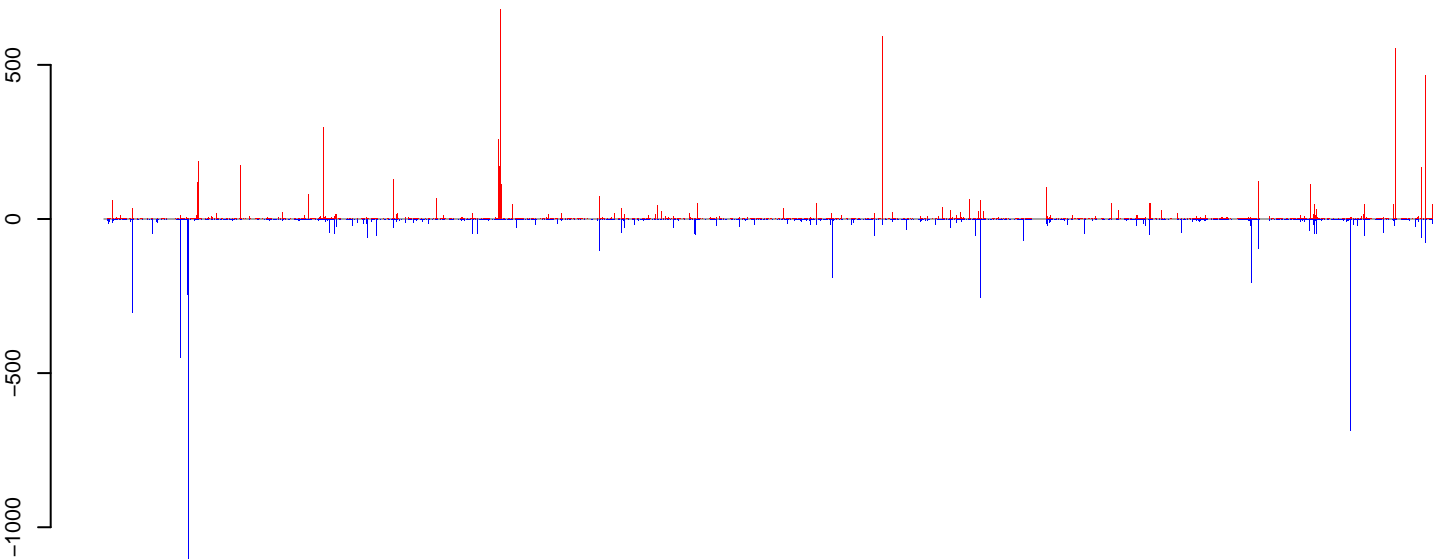
positive=6514, negative=4087, total=10600

**AeAlbo\_C636\_cells.24\_35.rep**



positive=5387, negative=4058, total=9445

**AeAlbo\_C636\_cells.rep**

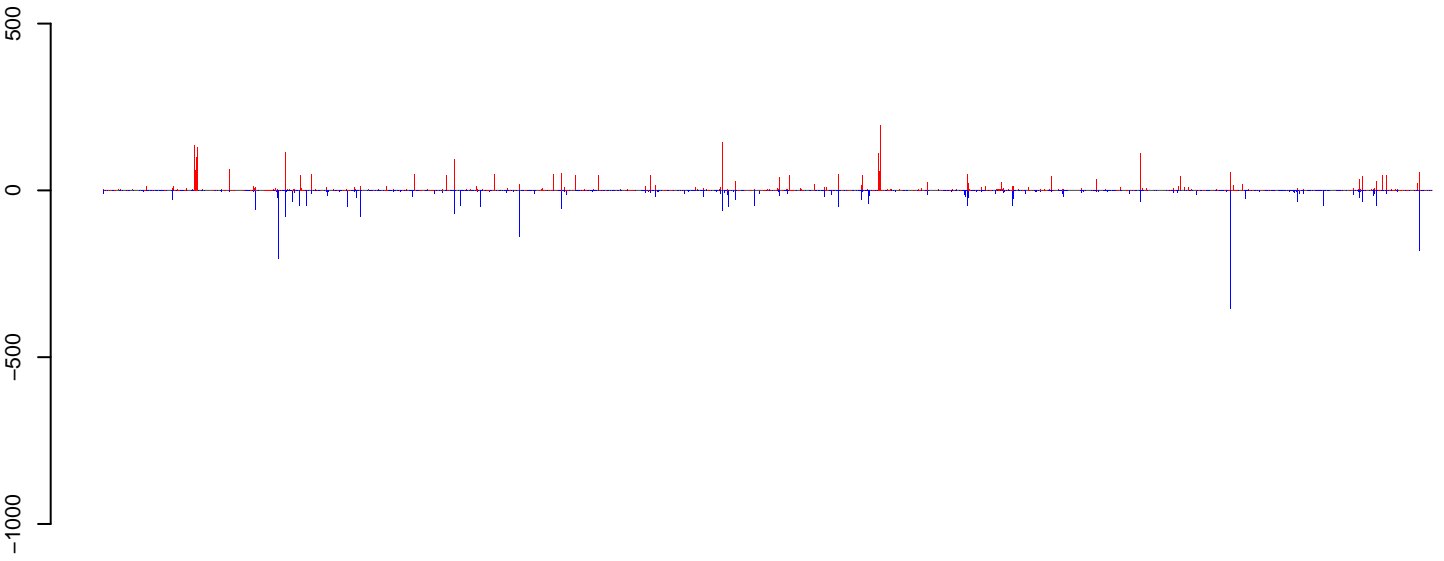


positive=11901, negative=8145, total=20045

Window size=50, length=1239155, Wolbachia@Wolbachia\_wMelPop:1-1239155

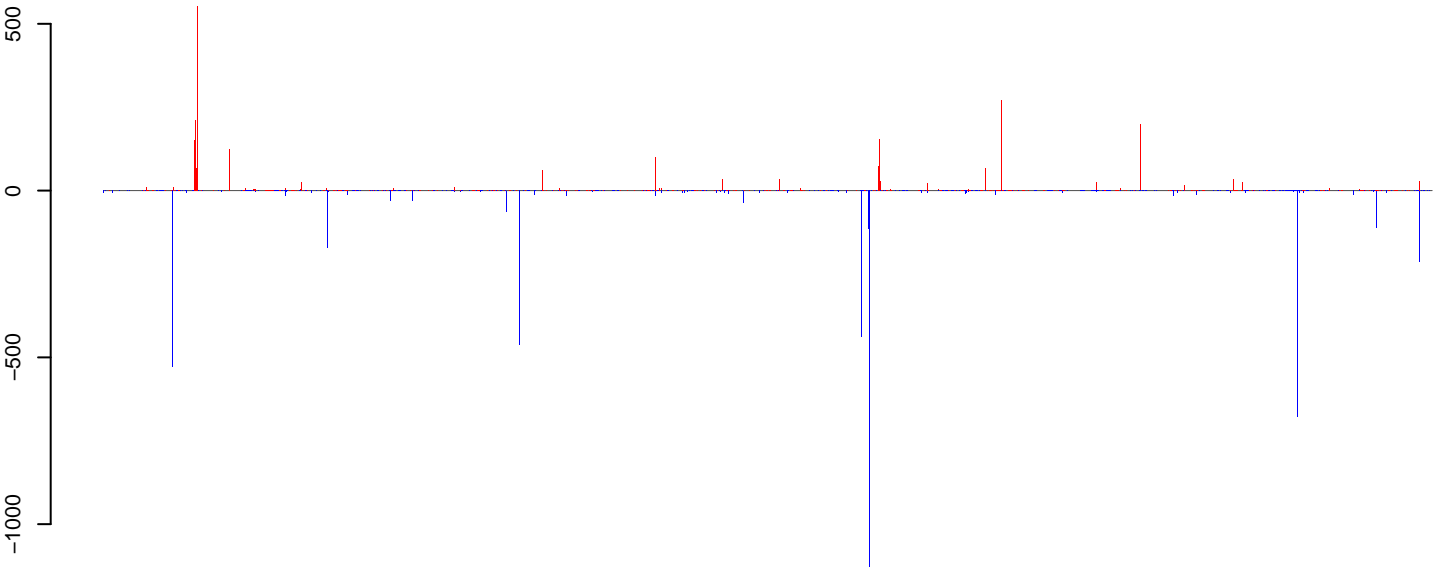
0 200000 400000 600000 800000 1000000 1200000

**AeAlbo\_C636\_cells.18\_23.rep**



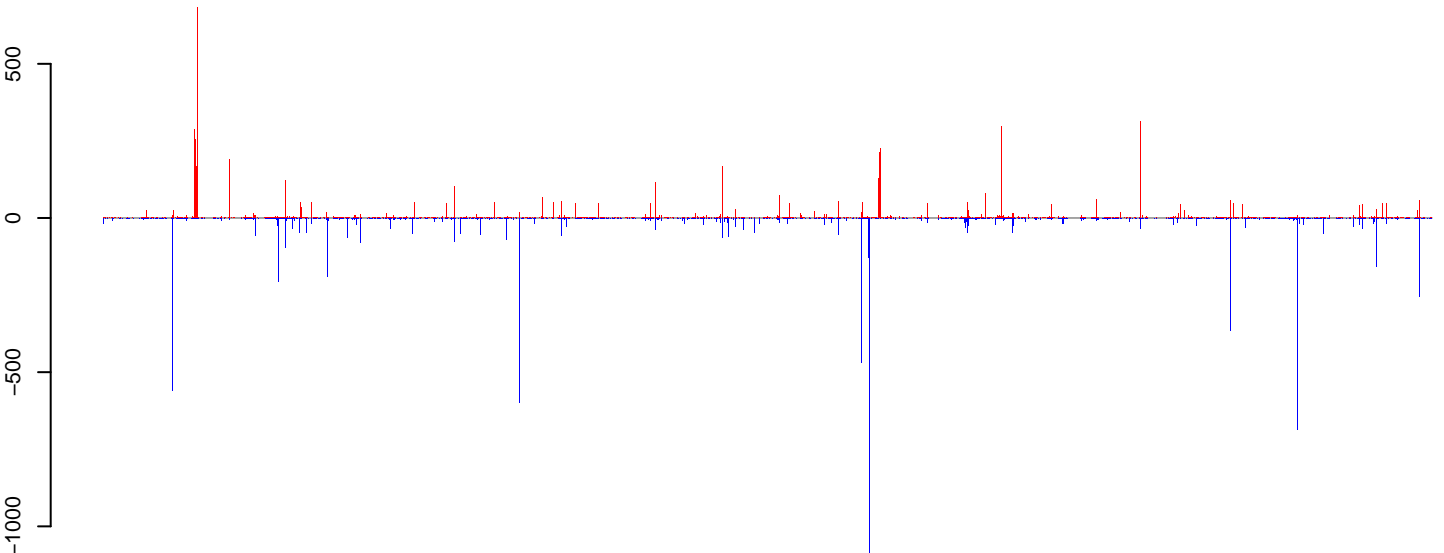
positive=6462, negative=4454, total=10916

**AeAlbo\_C636\_cells.24\_35.rep**



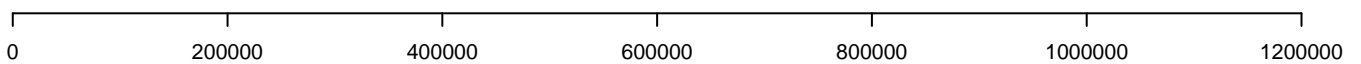
positive=4659, negative=5068, total=9727

**AeAlbo\_C636\_cells.rep**

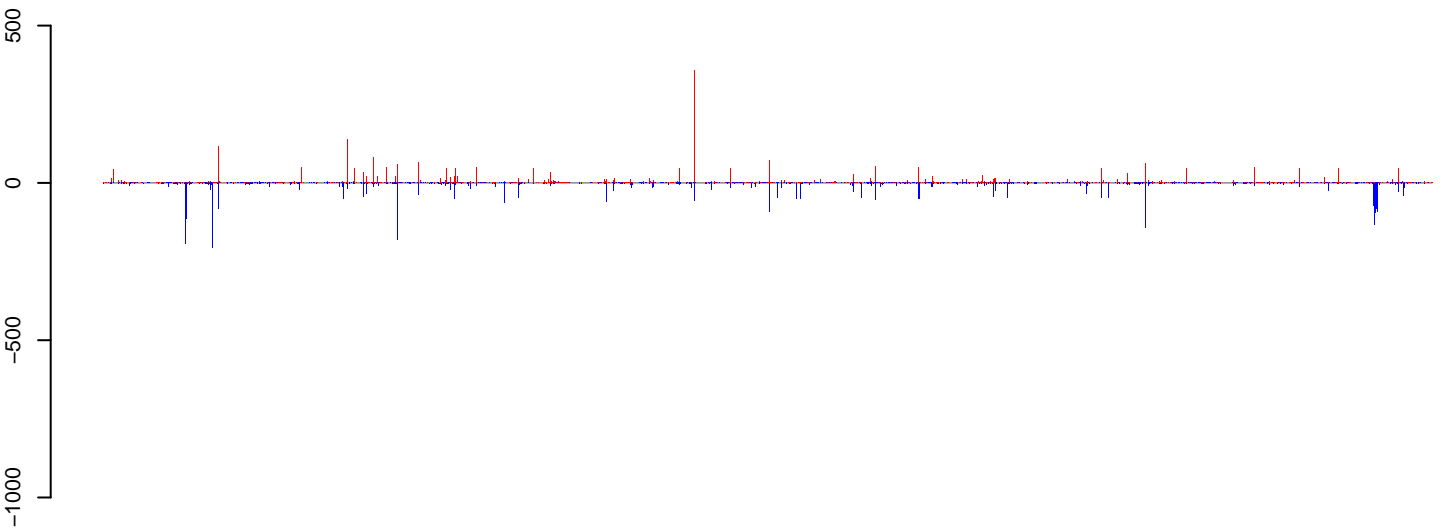


positive=11121, negative=9522, total=20643

Window size=50, length=1236914, Wolbachia@Wolbachia\_wAna\_India:1-1236914

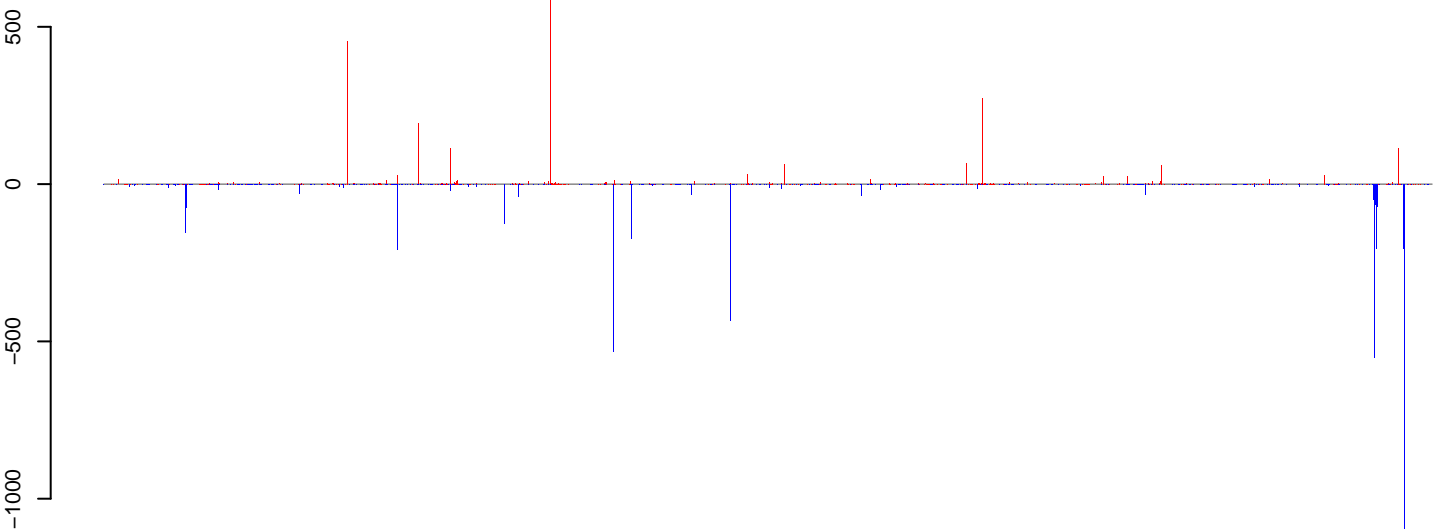


**AeAlbo\_C636\_cells.18\_23.rep**



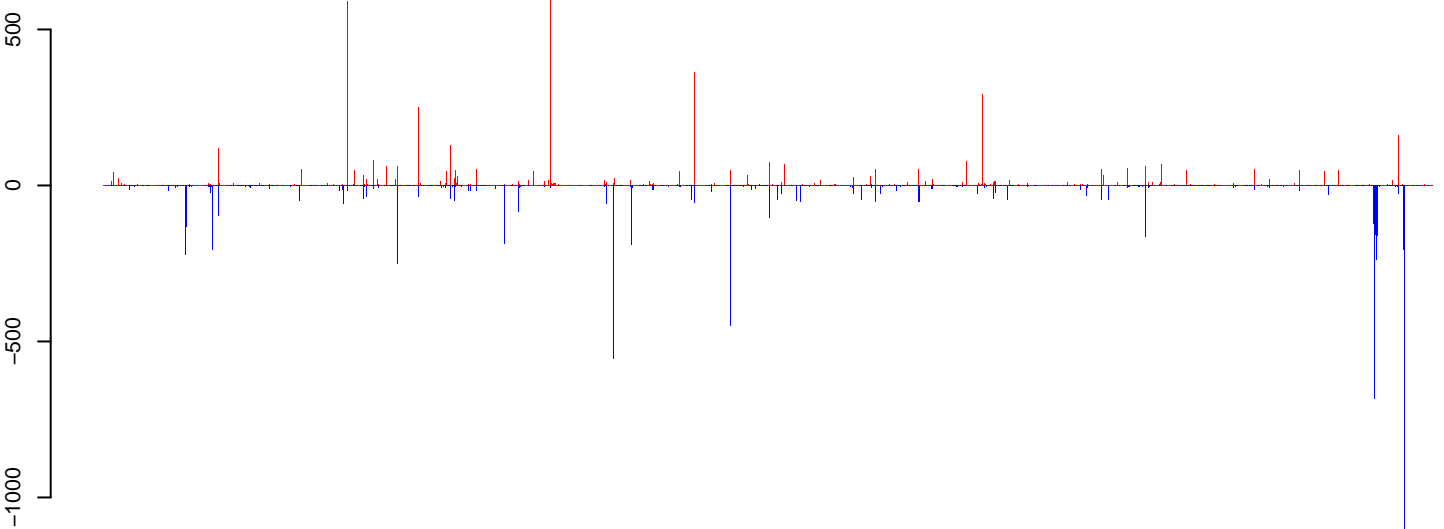
positive=4194, negative=6461, total=10655

**AeAlbo\_C636\_cells.24\_35.rep**



positive=2866, negative=6726, total=9591

**AeAlbo\_C636\_cells.rep**

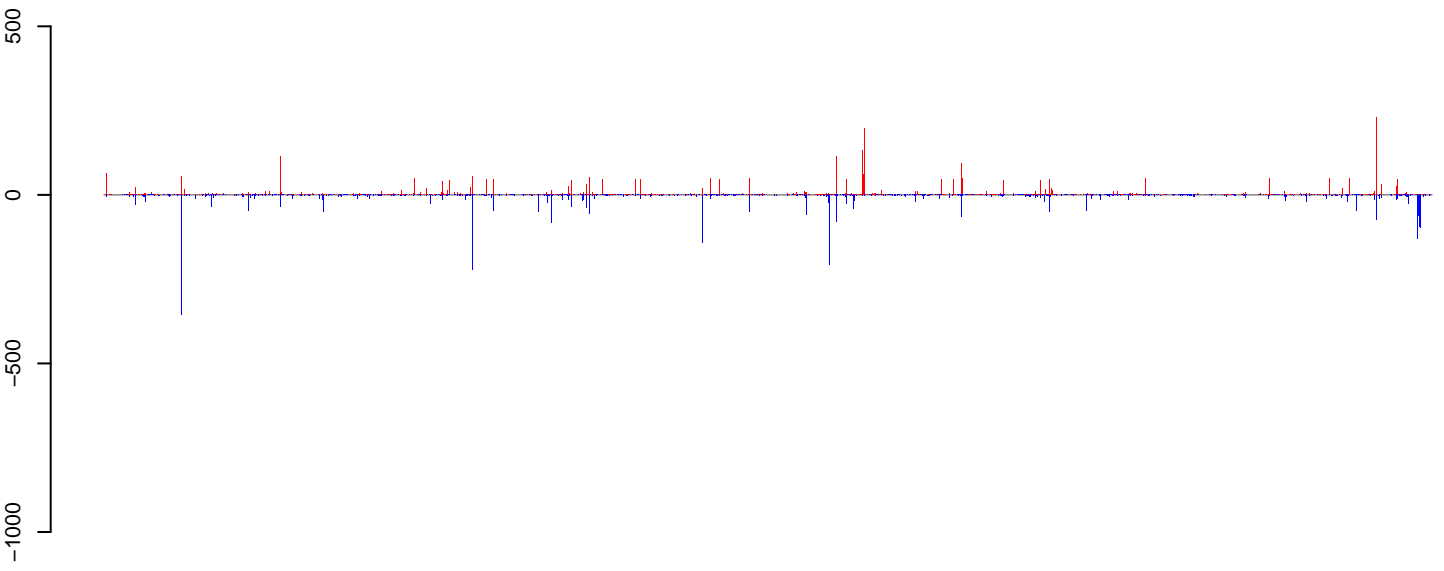


positive=7059, negative=13187, total=20246

Window size=50, length=1216798, Wolbachia@Wolbachia\_wAna\_Hawaii:1-1216798

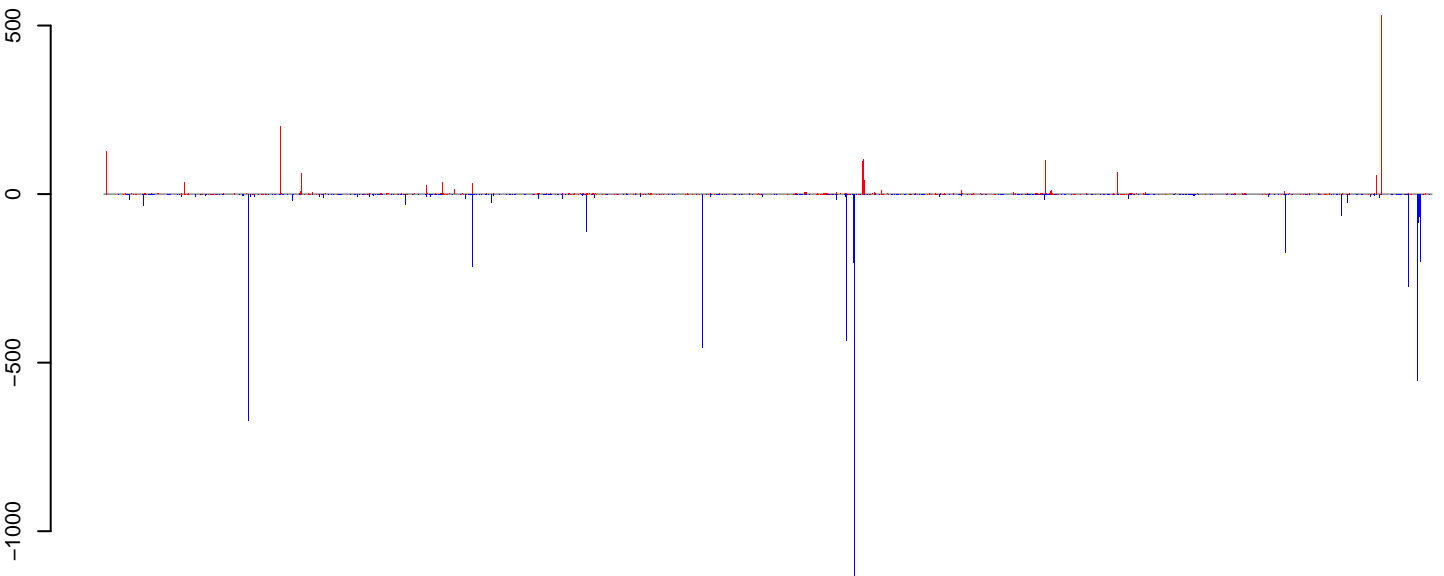
0 200000 400000 600000 800000 1000000 1200000

**AeAlbo\_C636\_cells.18\_23.rep**



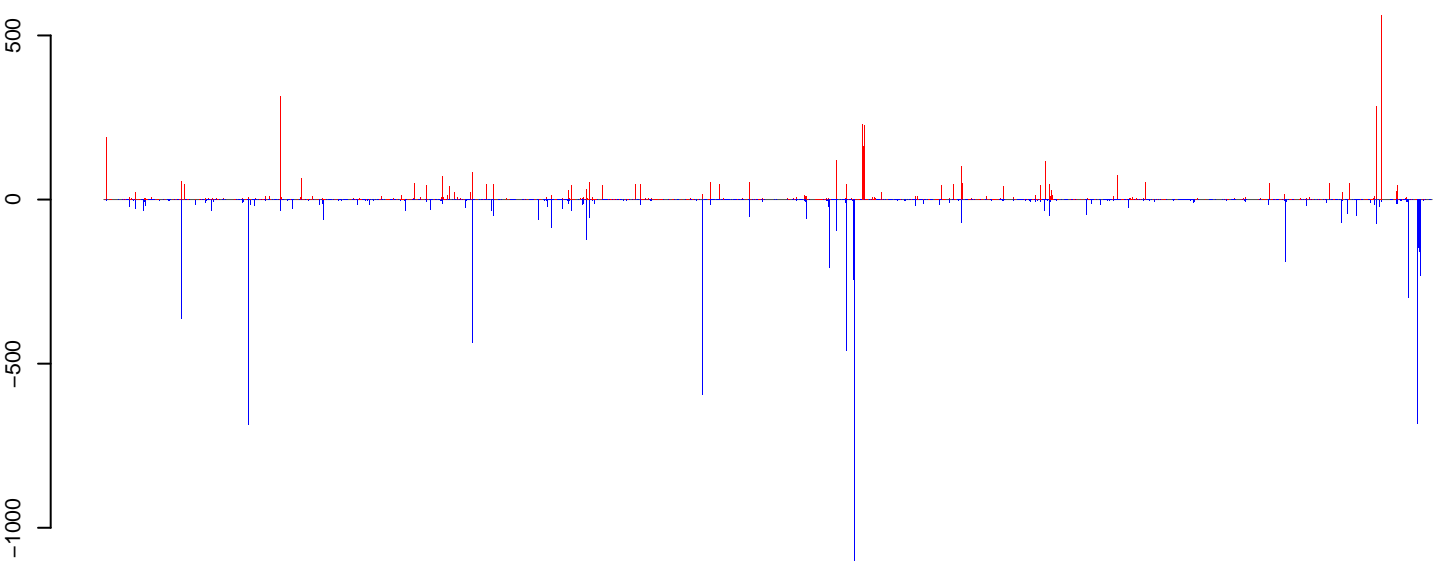
positive=5055, negative=5586, total=10641

**AeAlbo\_C636\_cells.24\_35.rep**



positive=2670, negative=6862, total=9532

**AeAlbo\_C636\_cells.rep**

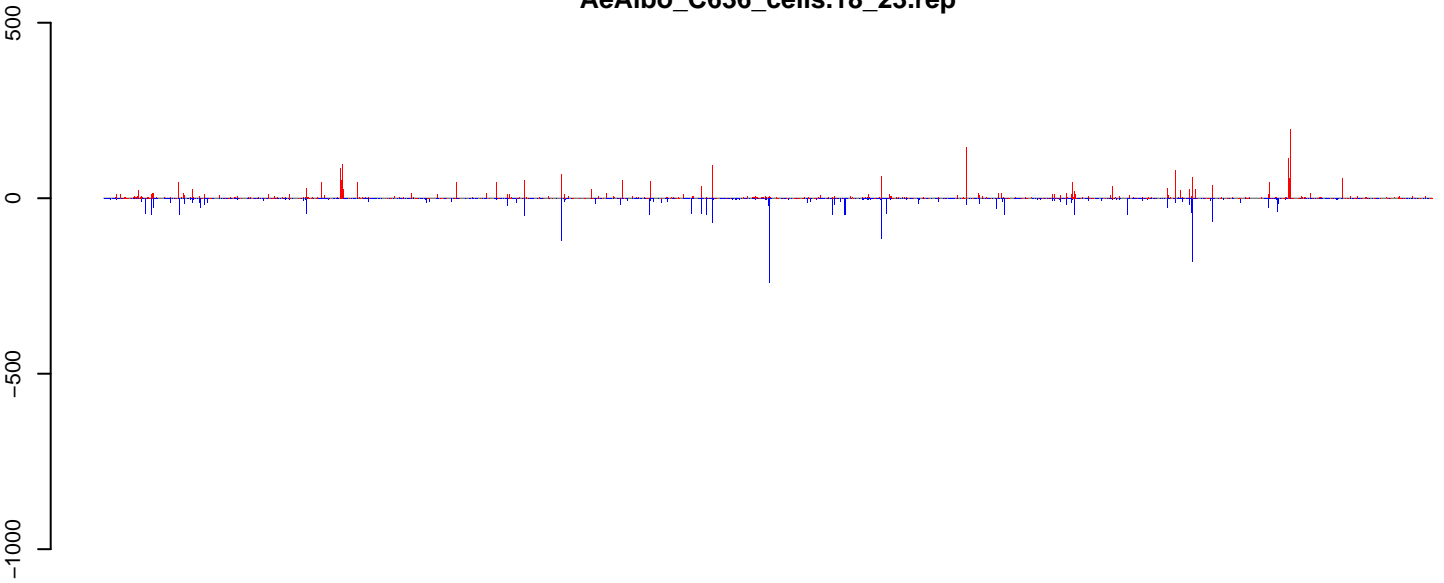


positive=7725, negative=12448, total=20174

Window size=50, length=1223568, Wolbachia@Wolbachia\_wAna\_Indonesia:1-1223568

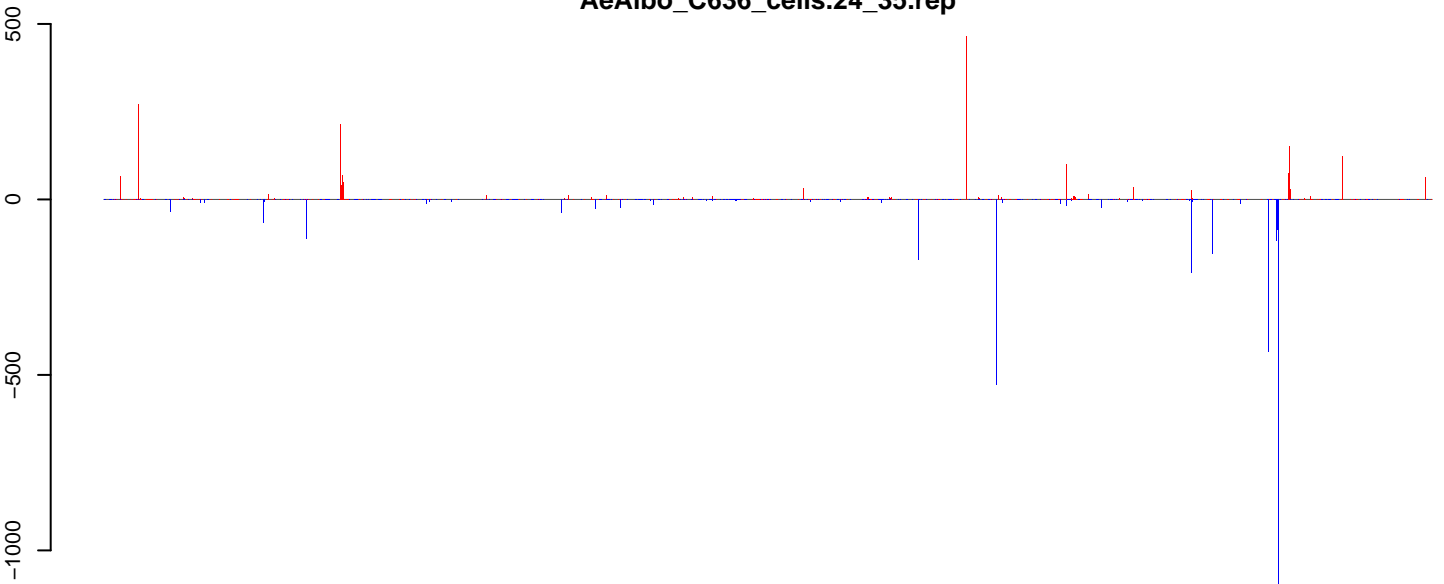
0 200000 400000 600000 800000 1000000 1200000

**AeAlbo\_C636\_cells.18\_23.rep**



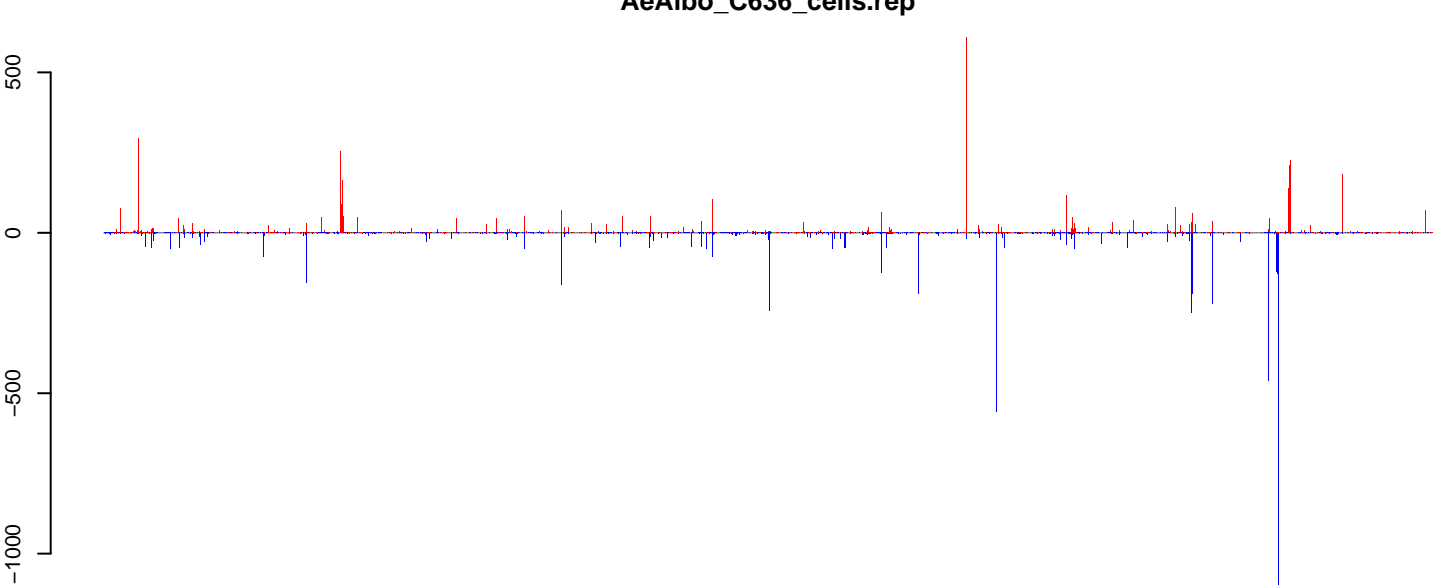
positive=5206, negative=3759, total=8965

**AeAlbo\_C636\_cells.24\_35.rep**



positive=4016, negative=3915, total=7930

**AeAlbo\_C636\_cells.rep**



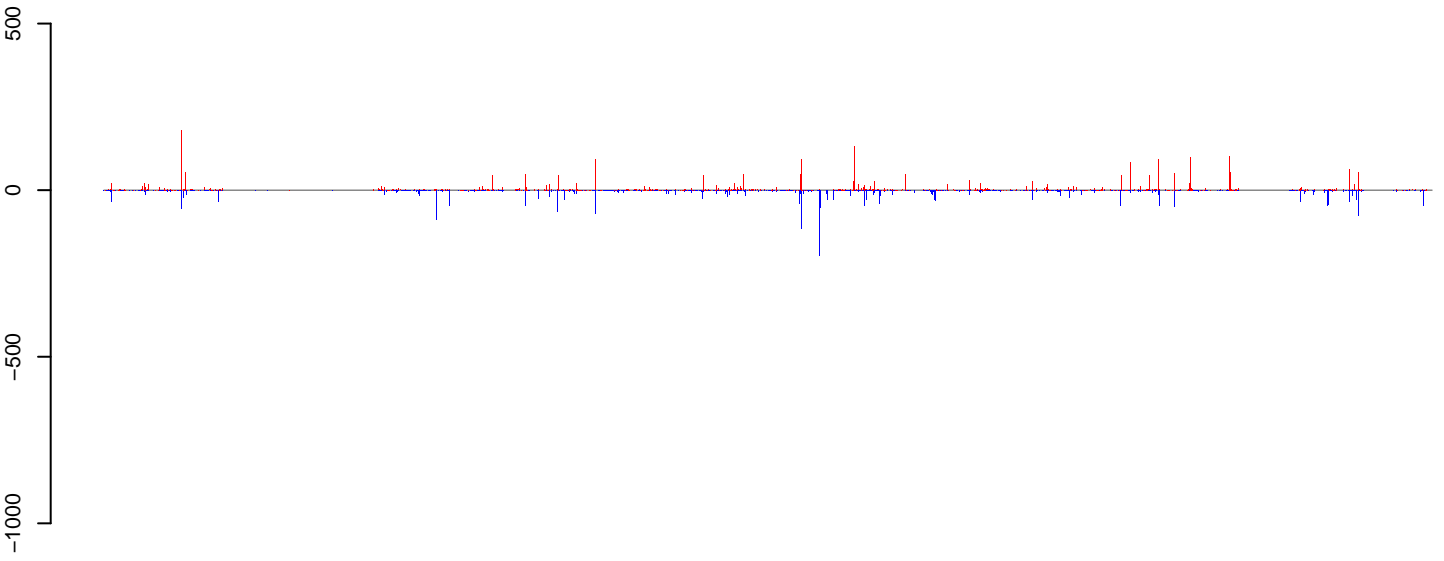
positive=9221, negative=7674, total=16895

Window size=50, length=1049170, Wolbachia@Wolbachia\_wUni:1-1049170

0e+00 2e+05 4e+05 6e+05 8e+05 1e+06

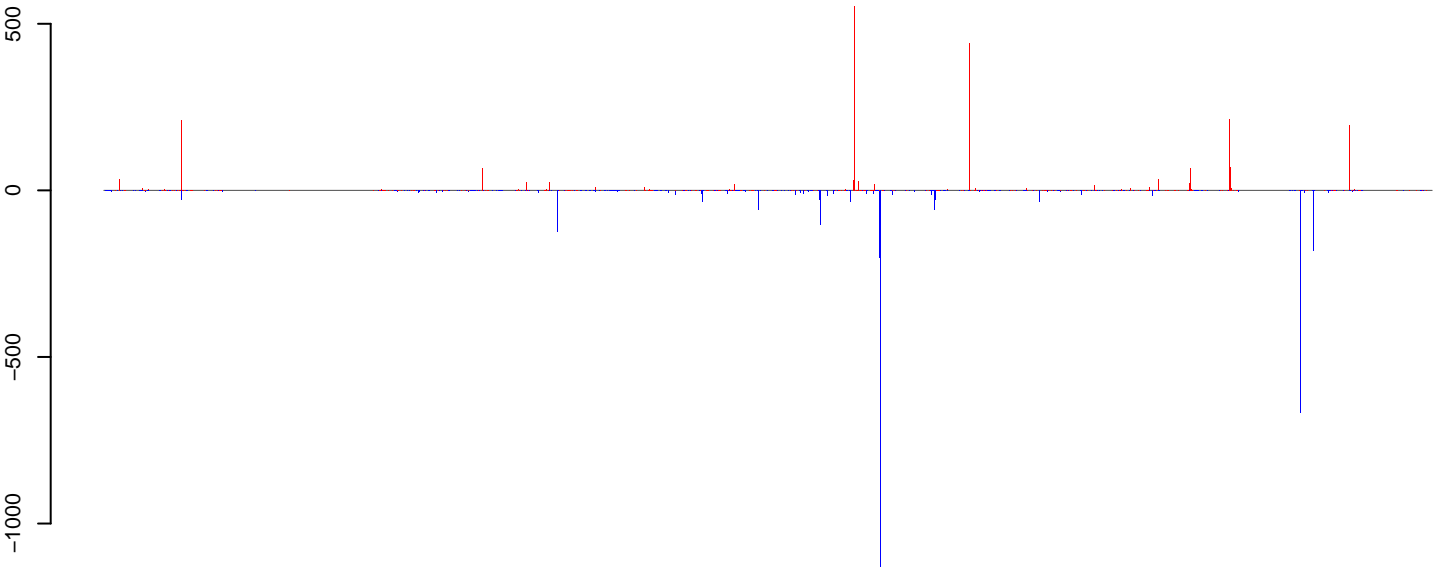


**AeAlbo\_C636\_cells.18\_23.rep**



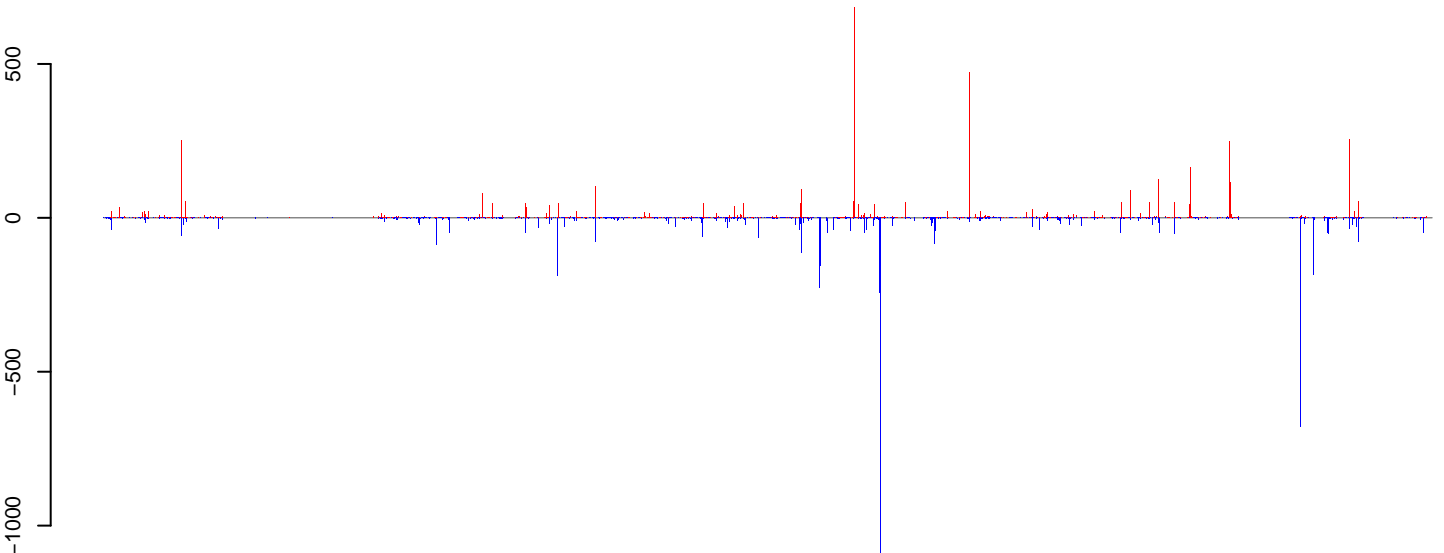
positive=4290, negative=3962, total=8252

**AeAlbo\_C636\_cells.24\_35.rep**



positive=3279, negative=3884, total=7163

**AeAlbo\_C636\_cells.rep**

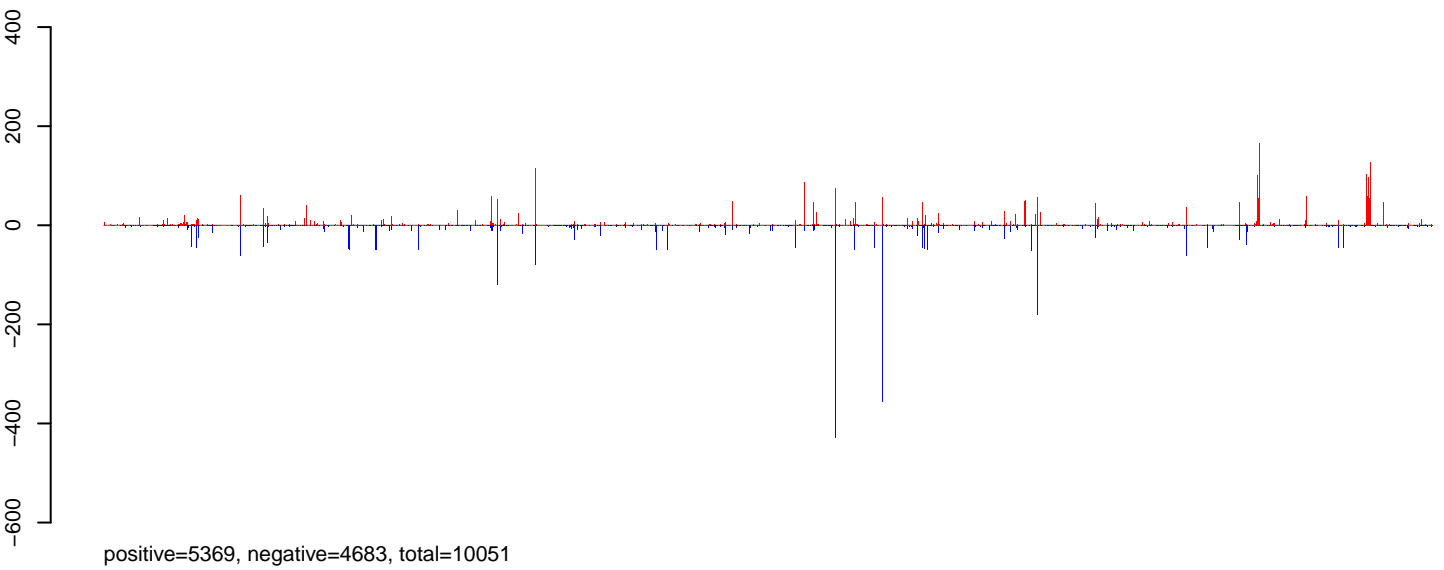


positive=7568, negative=7846, total=15415

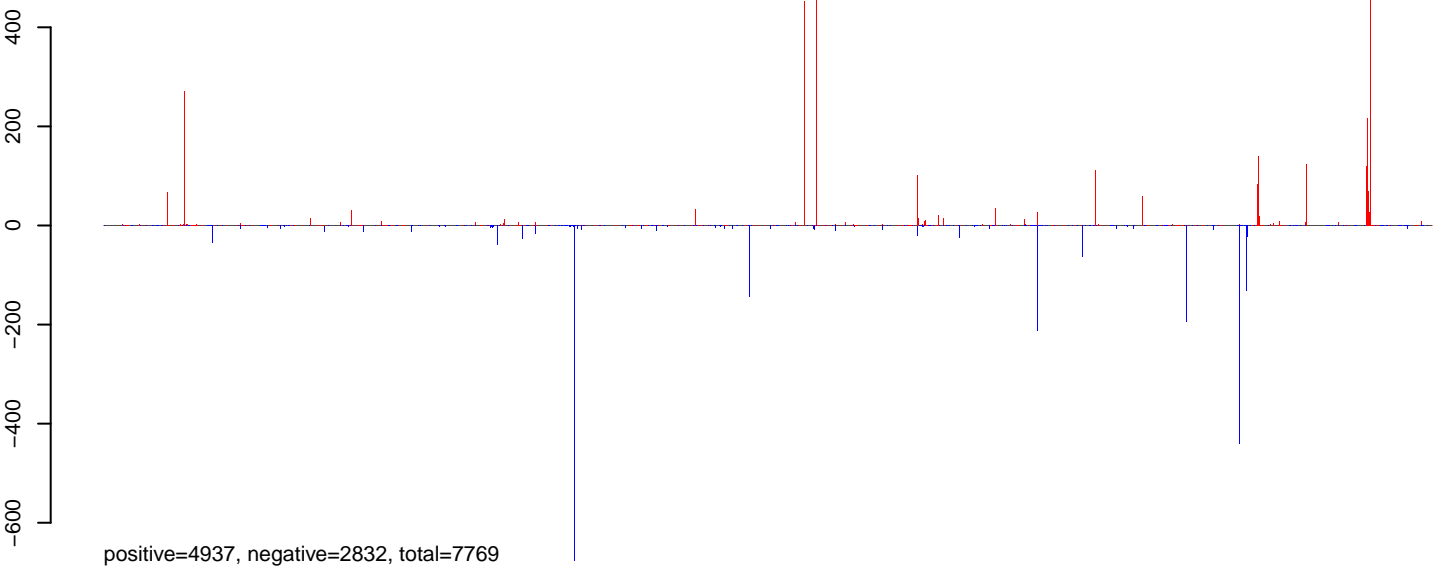
Window size=50, length=1320505, Wolbachia@Wolbachia\_HN2016:1-1320505

0 200000 400000 600000 800000 1000000 1200000

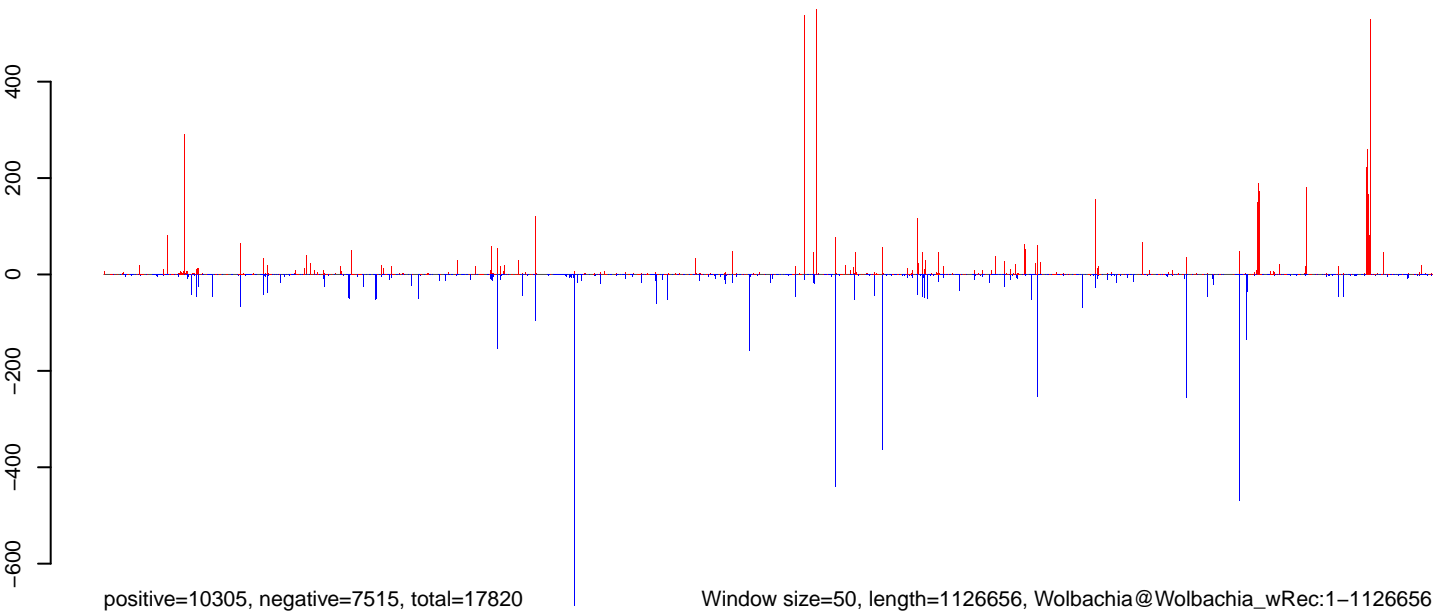
### AeAlbo\_C636\_cells.18\_23.rep



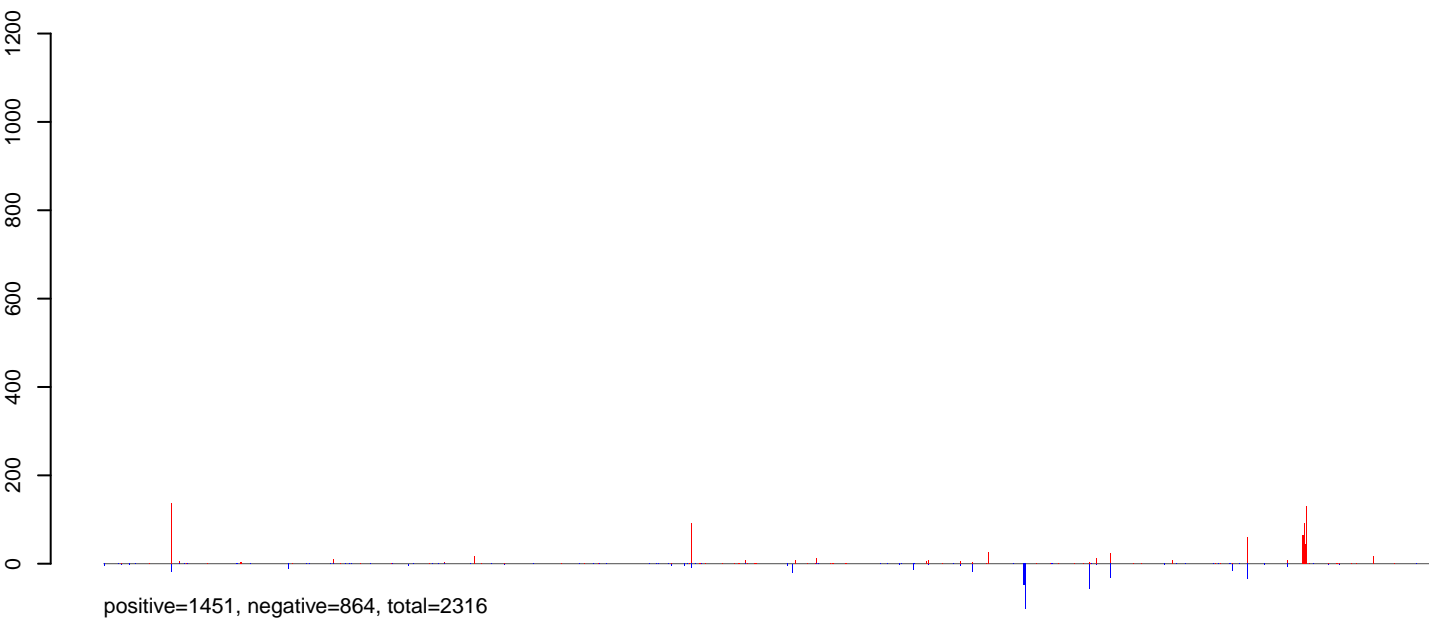
### AeAlbo\_C636\_cells.24\_35.rep



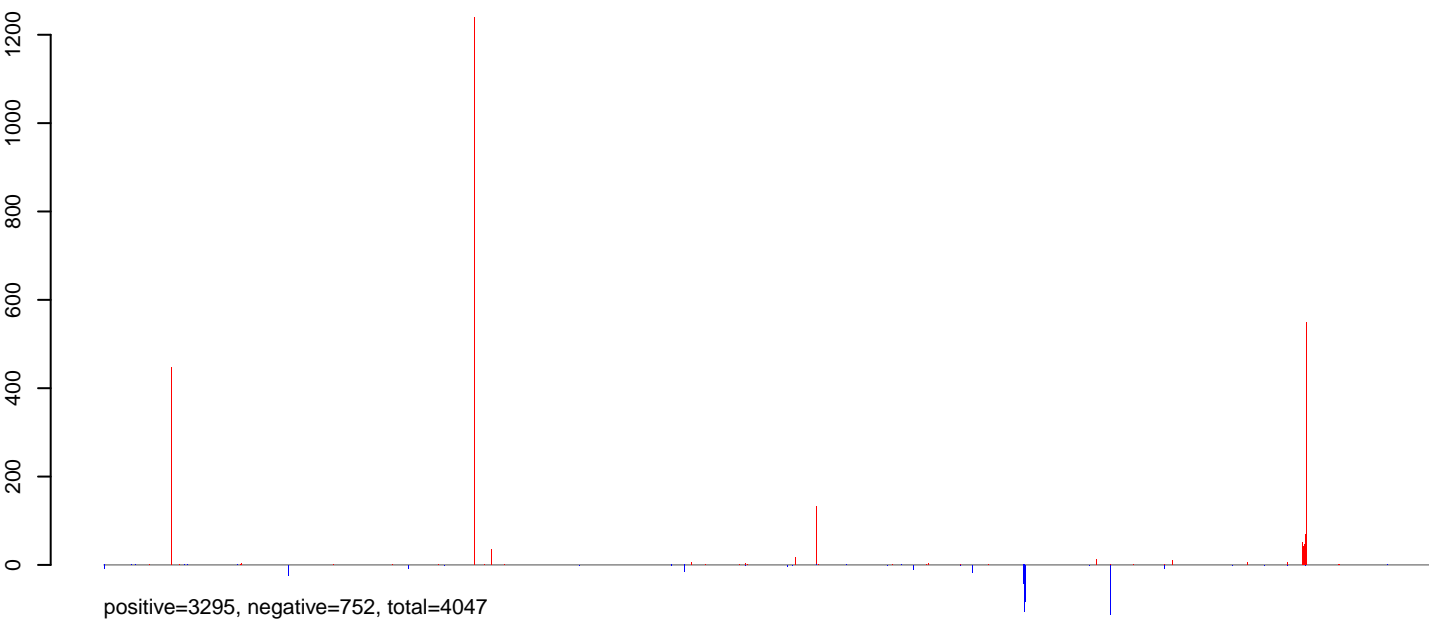
### AeAlbo\_C636\_cells.rep



**AeAlbo\_C636\_cells.18\_23.rep**



**AeAlbo\_C636\_cells.24\_35.rep**



**AeAlbo\_C636\_cells.rep**

