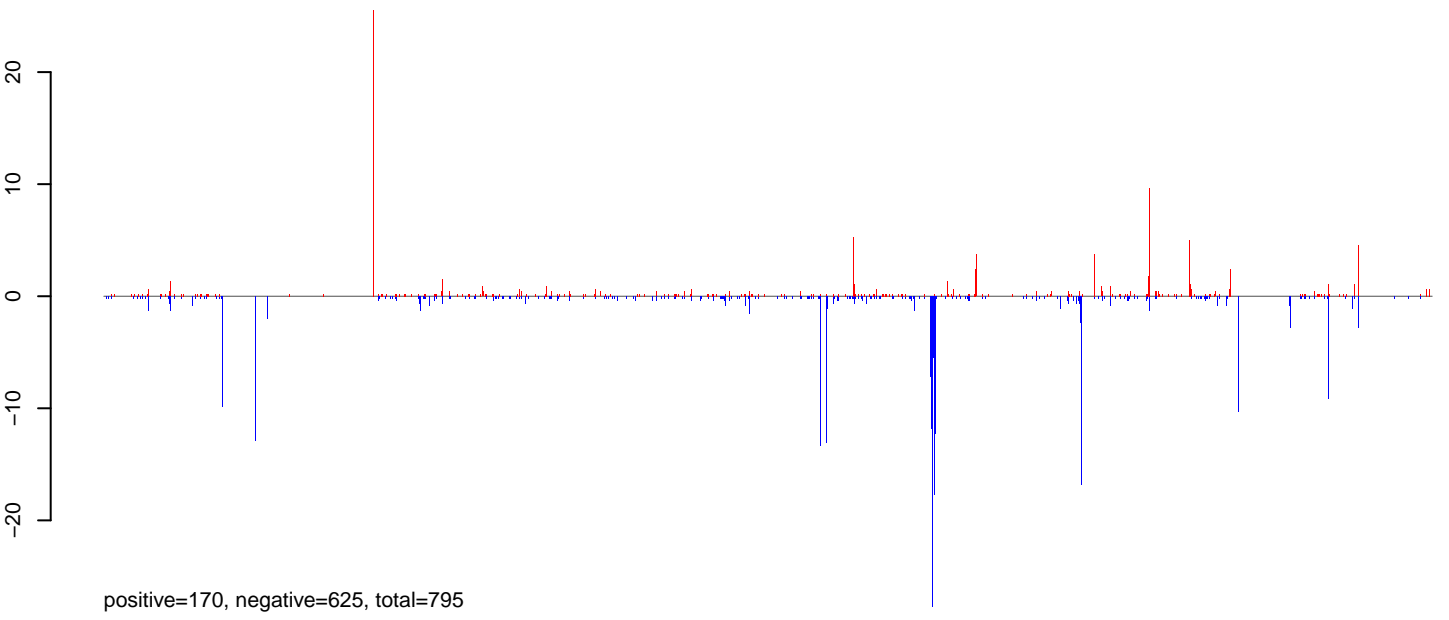
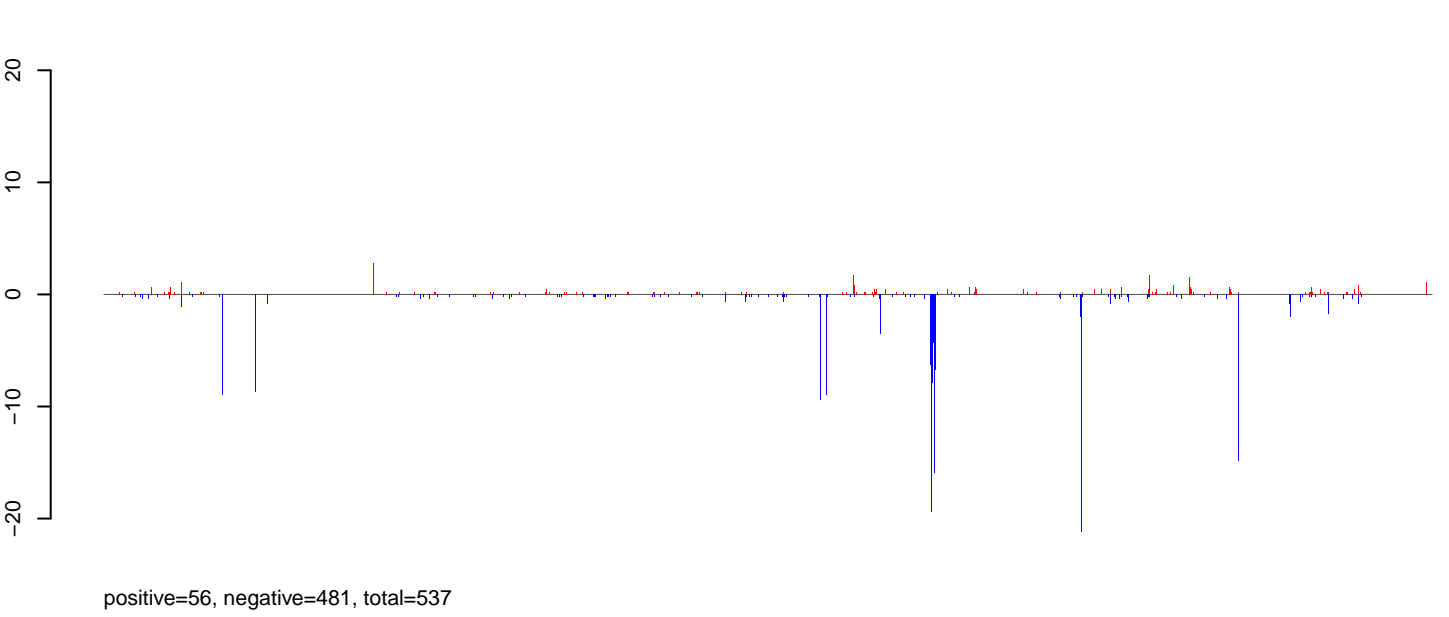


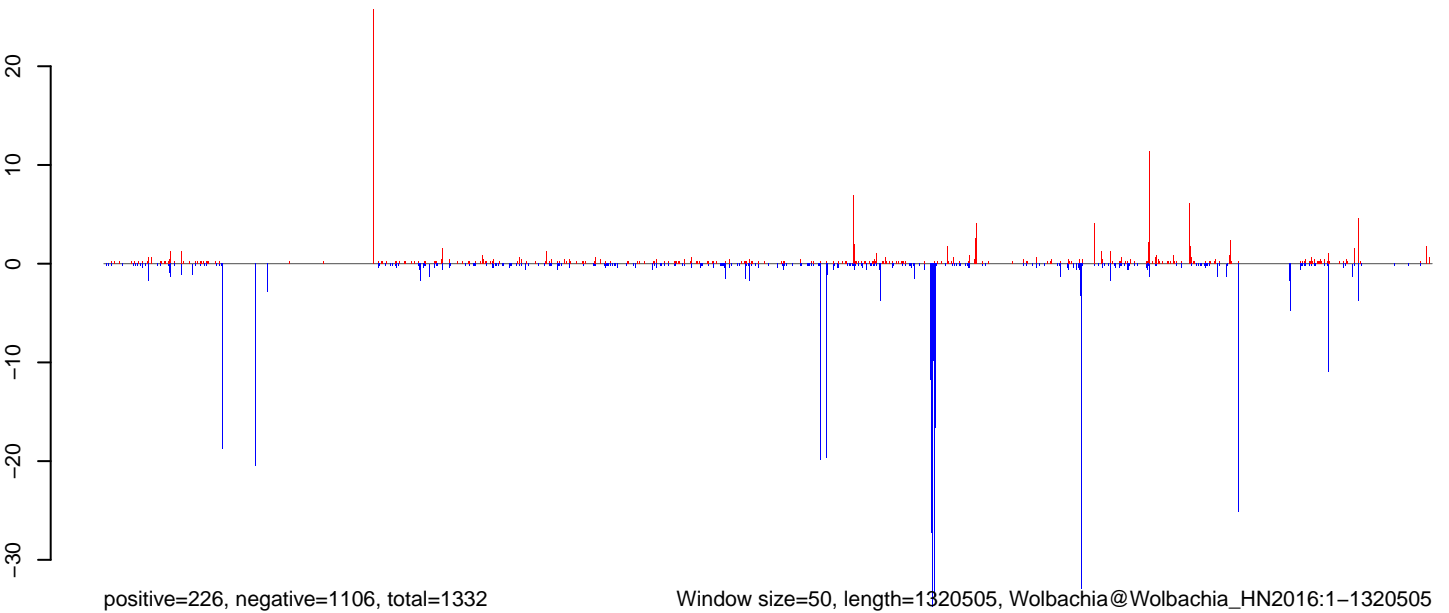
**AeAlbo\_FcArc\_OA.18\_23.rep**



**AeAlbo\_FcArc\_OA.24\_35.rep**



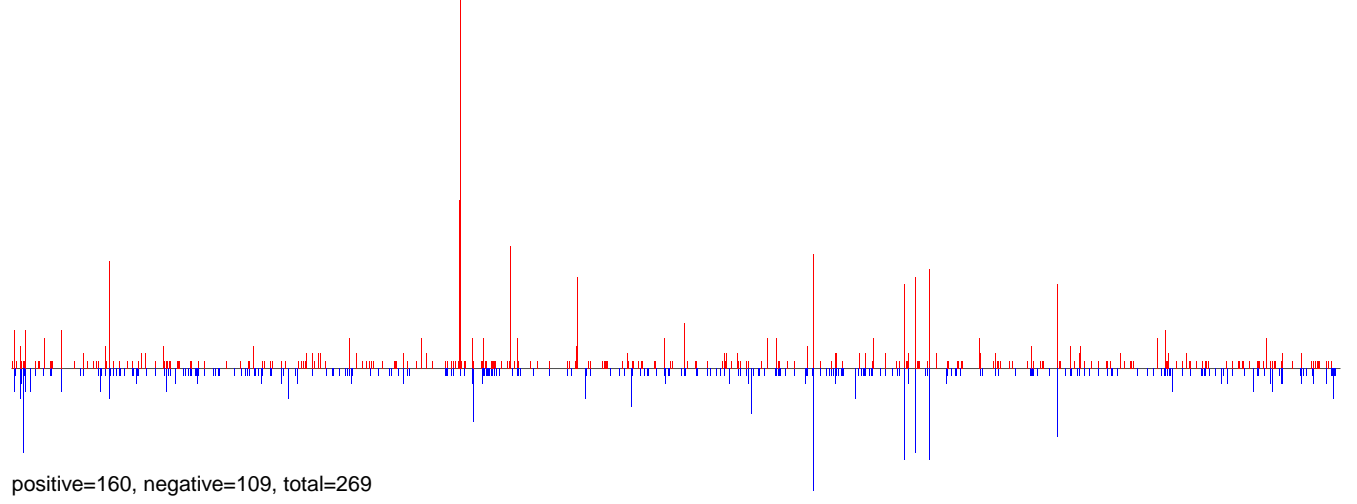
**AeAlbo\_FcArc\_OA.rep**



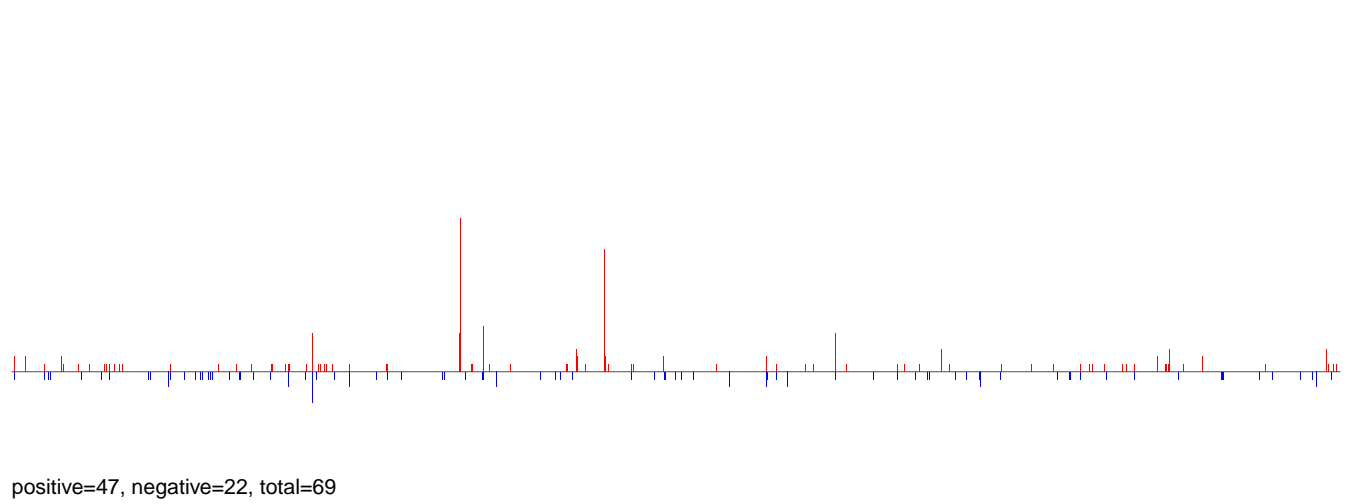
Window size=50, length=1320505, Wolbachia@Wolbachia\_HN2016:1-1320505

0 200000 400000 600000 800000 1000000 1200000

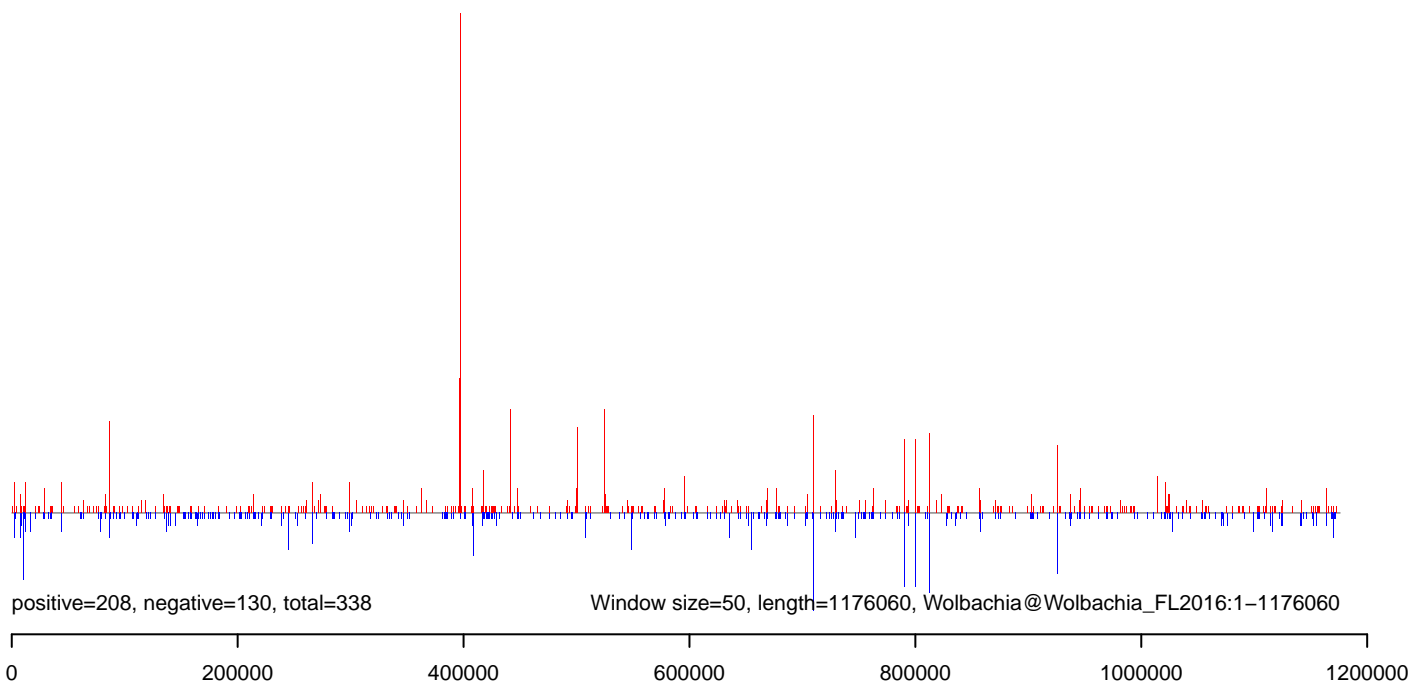
**AeAlbo\_Fcirc\_OA.18\_23.rep**



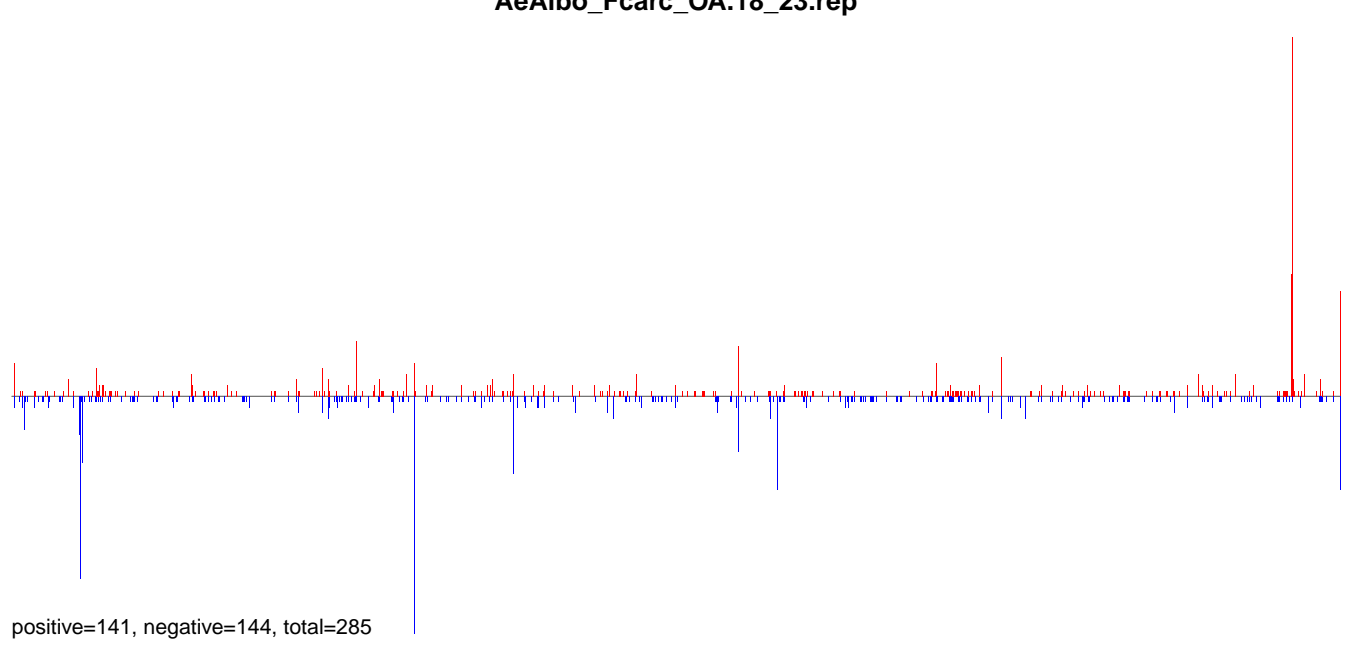
**AeAlbo\_Fcirc\_OA.24\_35.rep**



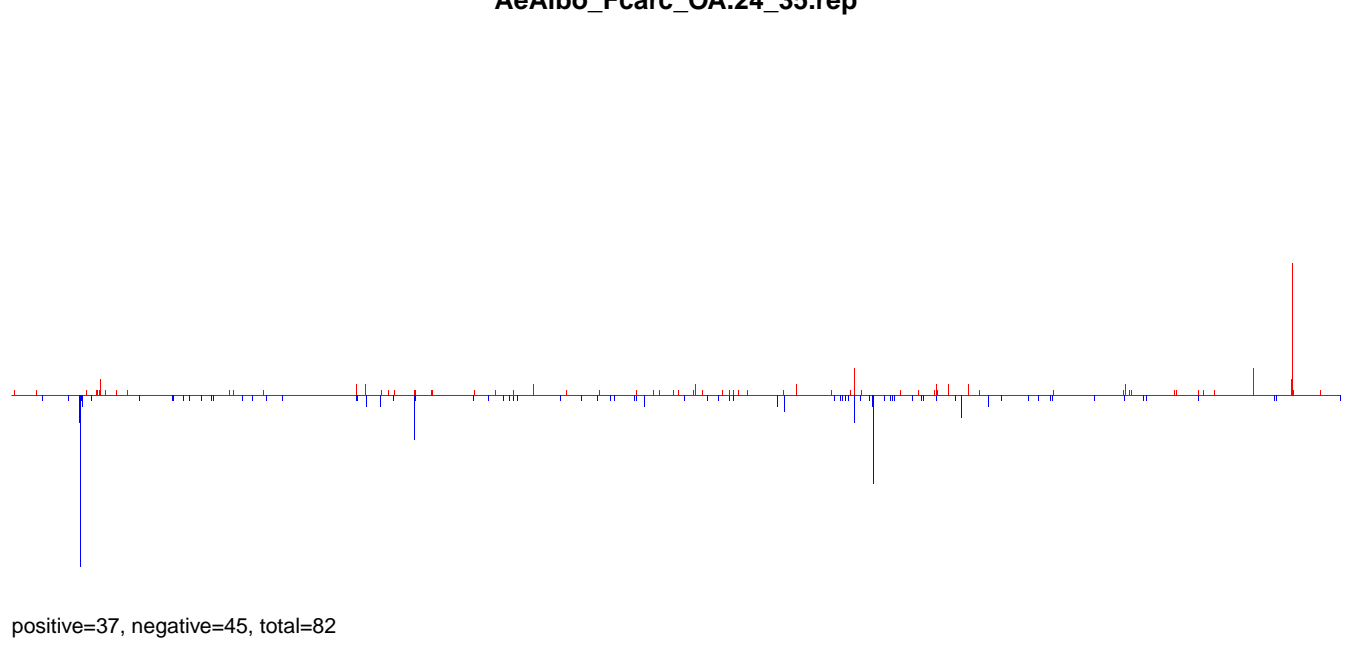
**AeAlbo\_Fcirc\_OA.rep**



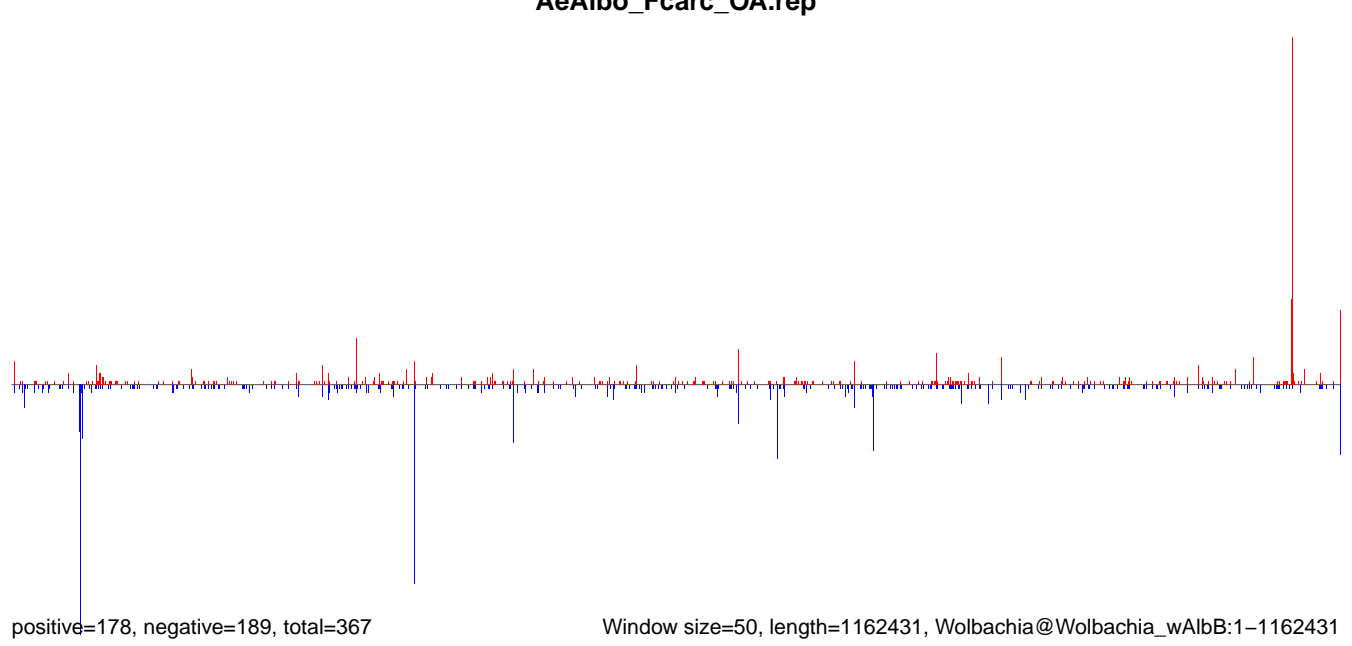
**AeAlbo\_Fcarc\_OA.18\_23.rep**



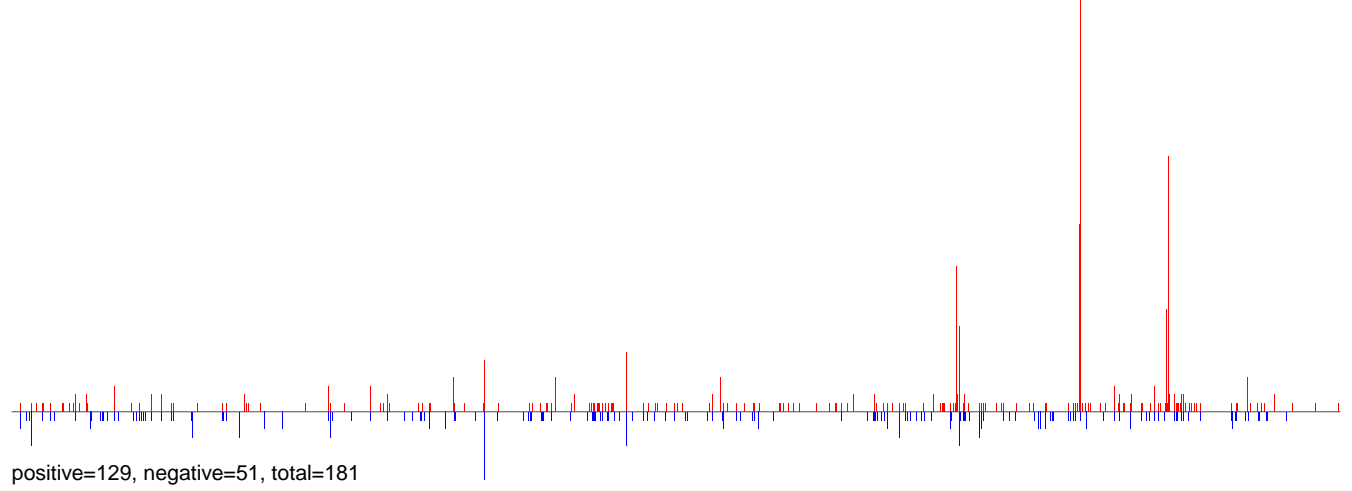
**AeAlbo\_Fcarc\_OA.24\_35.rep**



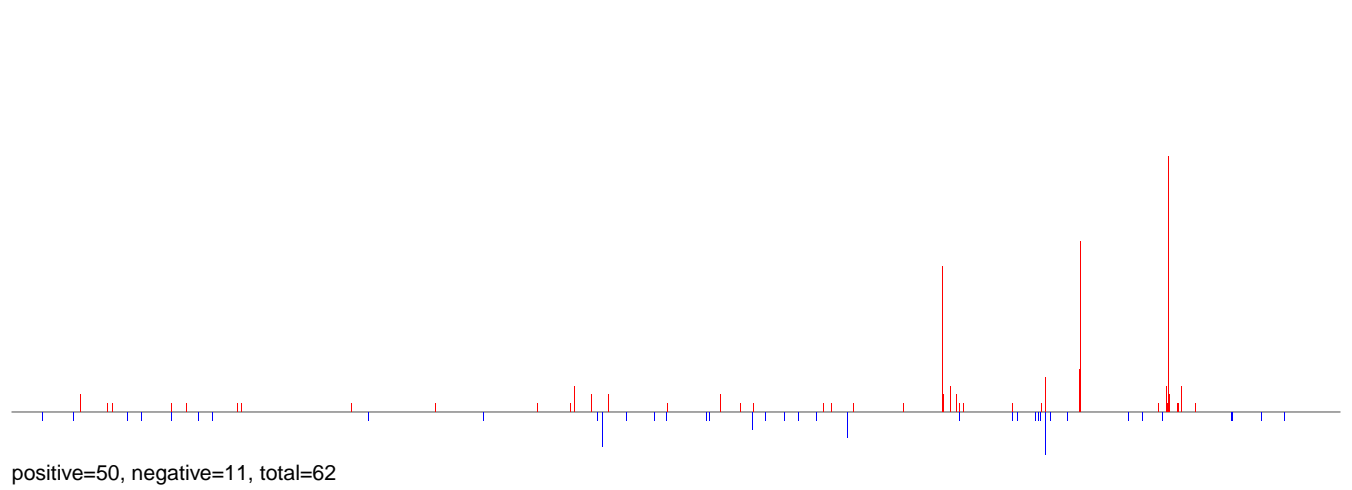
**AeAlbo\_Fcarc\_OA.rep**



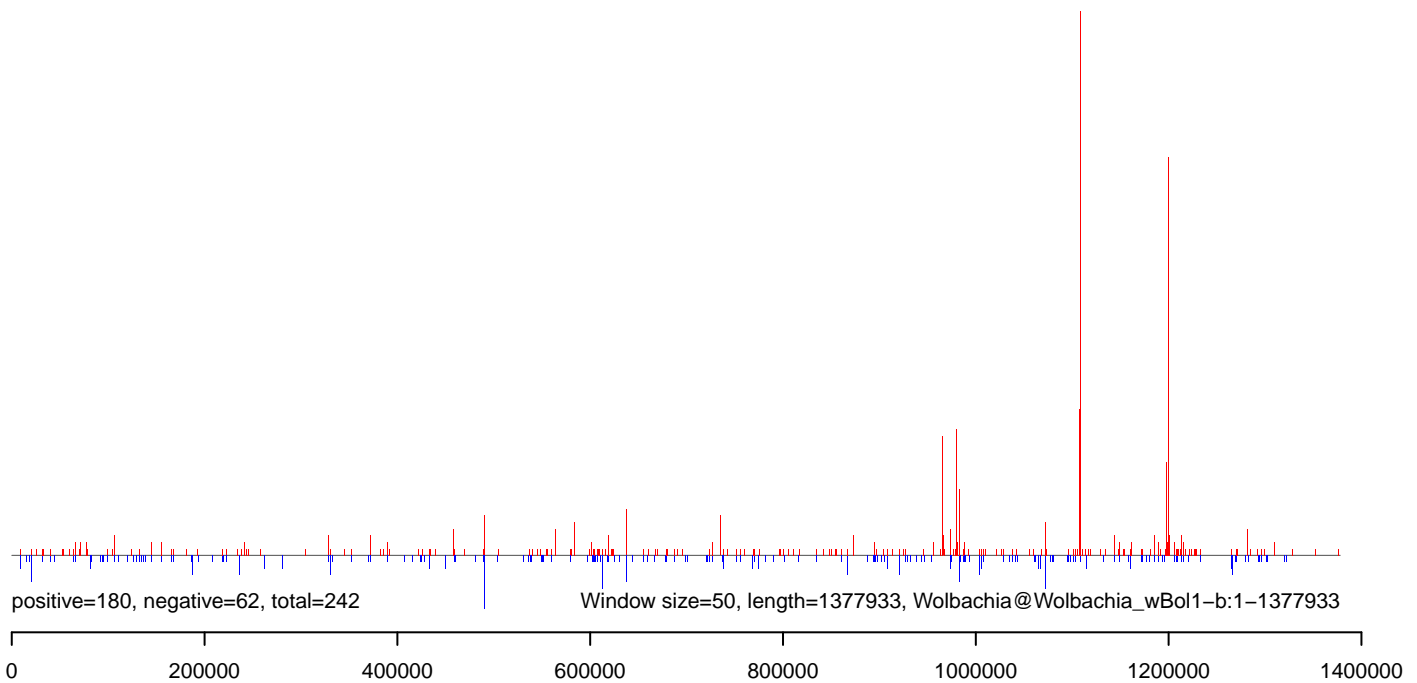
**AeAlbo\_Fcarc\_OA.18\_23.rep**



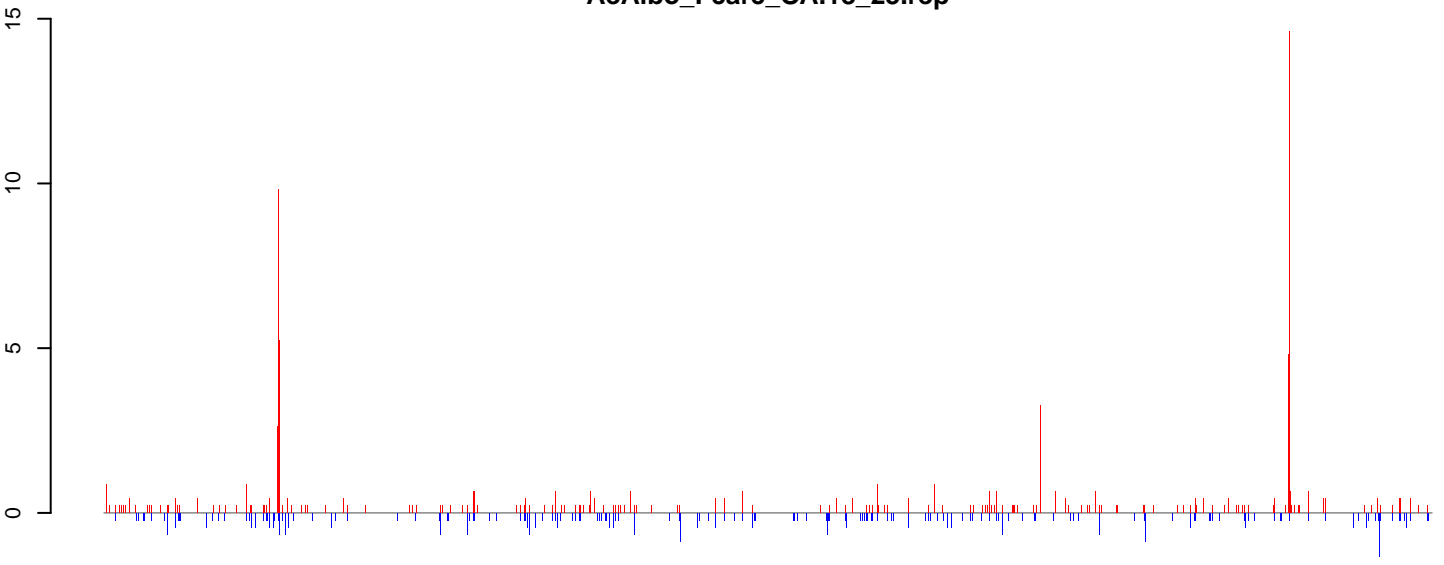
**AeAlbo\_Fcarc\_OA.24\_35.rep**



**AeAlbo\_Fcarc\_OA.rep**

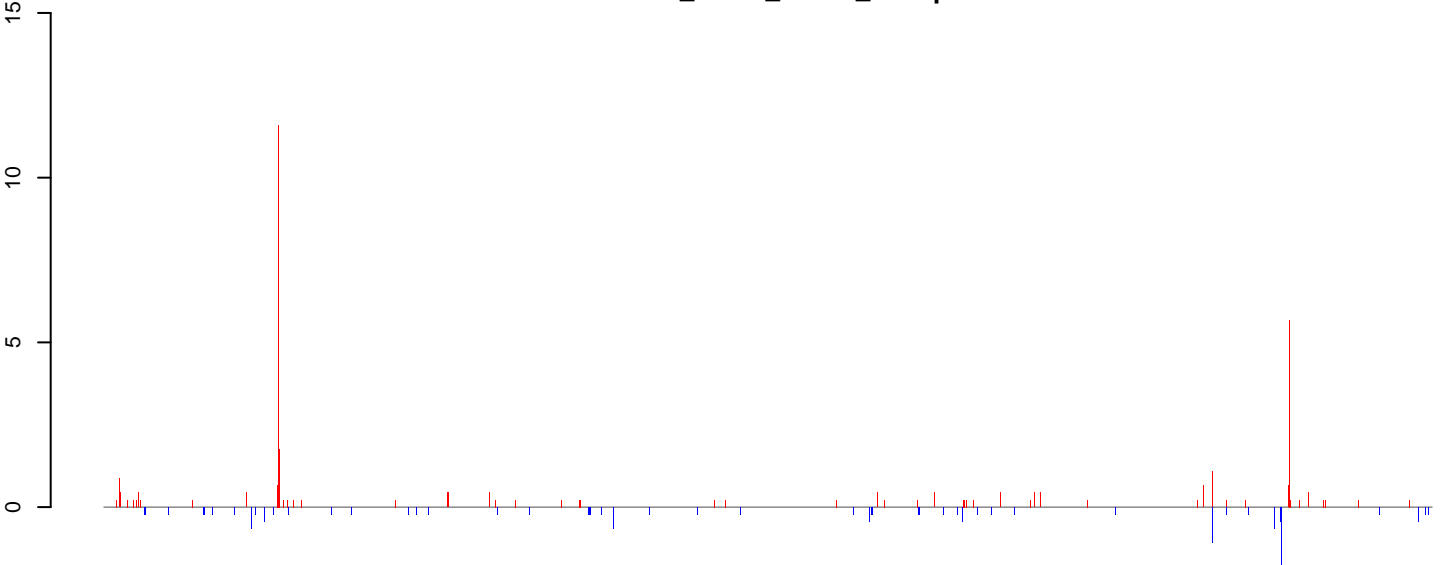


**AeAlbo\_FcArc\_OA.18\_23.rep**



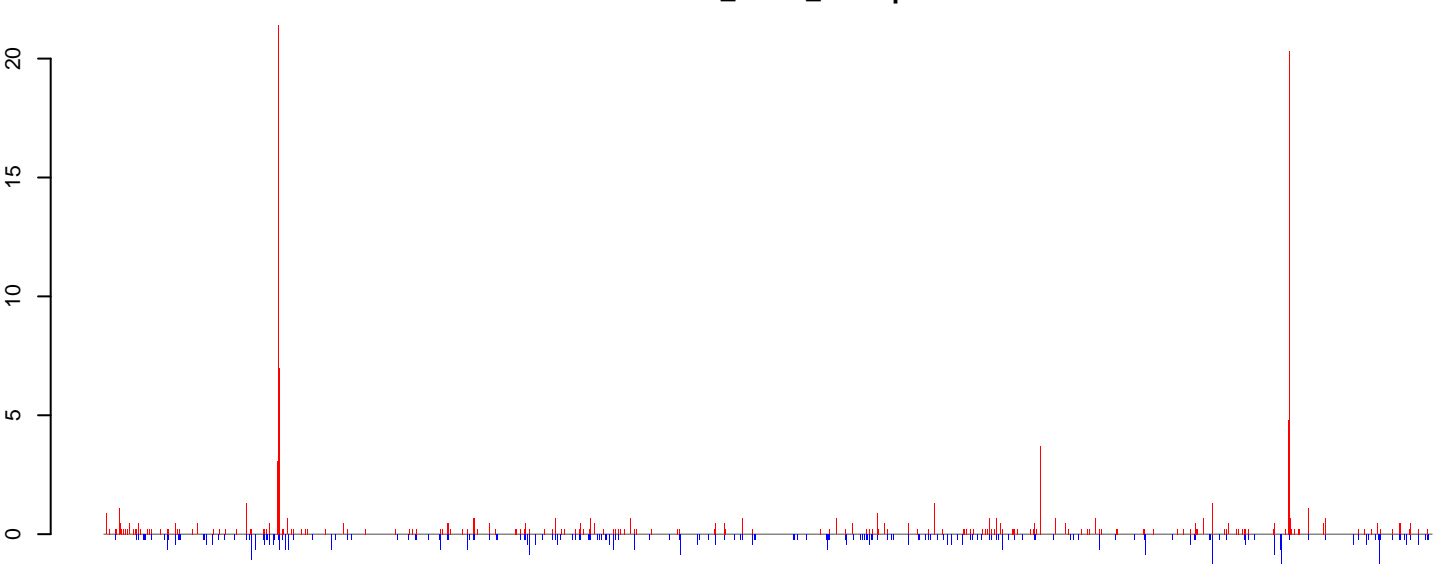
positive=126, negative=55, total=181

**AeAlbo\_FcArc\_OA.24\_35.rep**



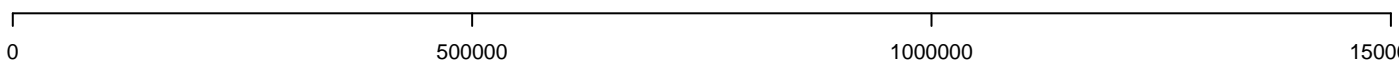
positive=52, negative=19, total=70

**AeAlbo\_FcArc\_OA.rep**

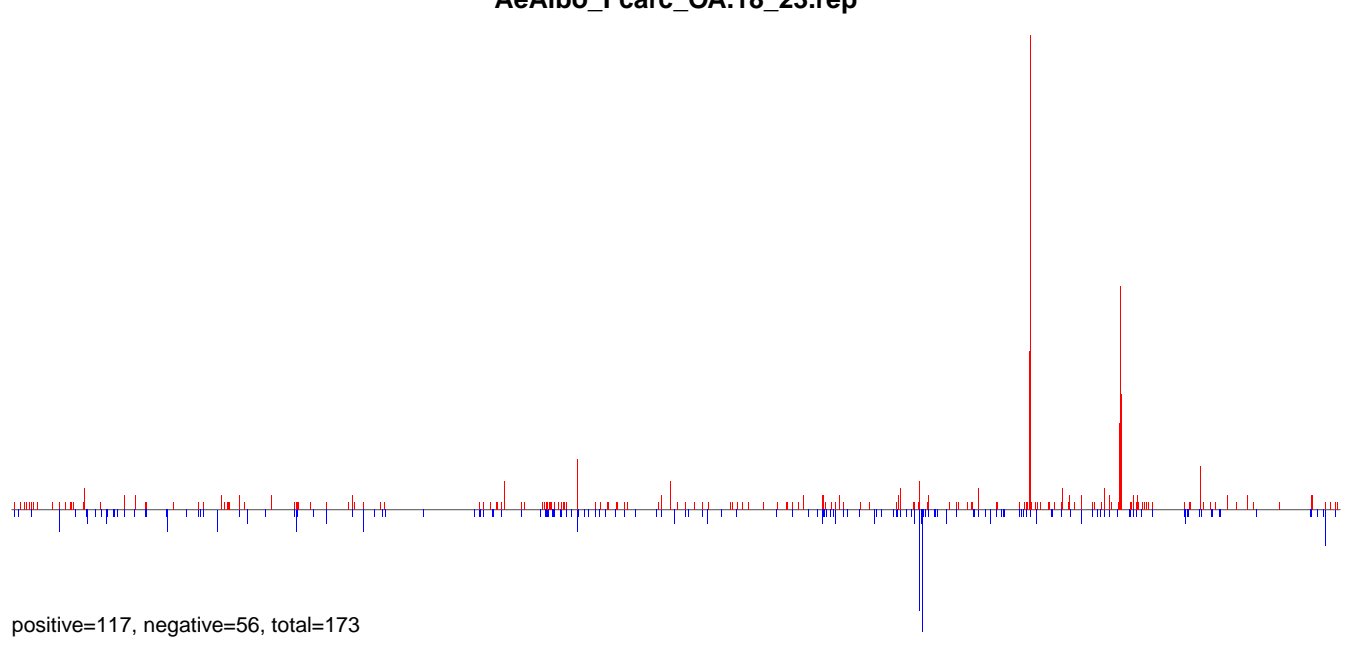


positive=177, negative=74, total=251

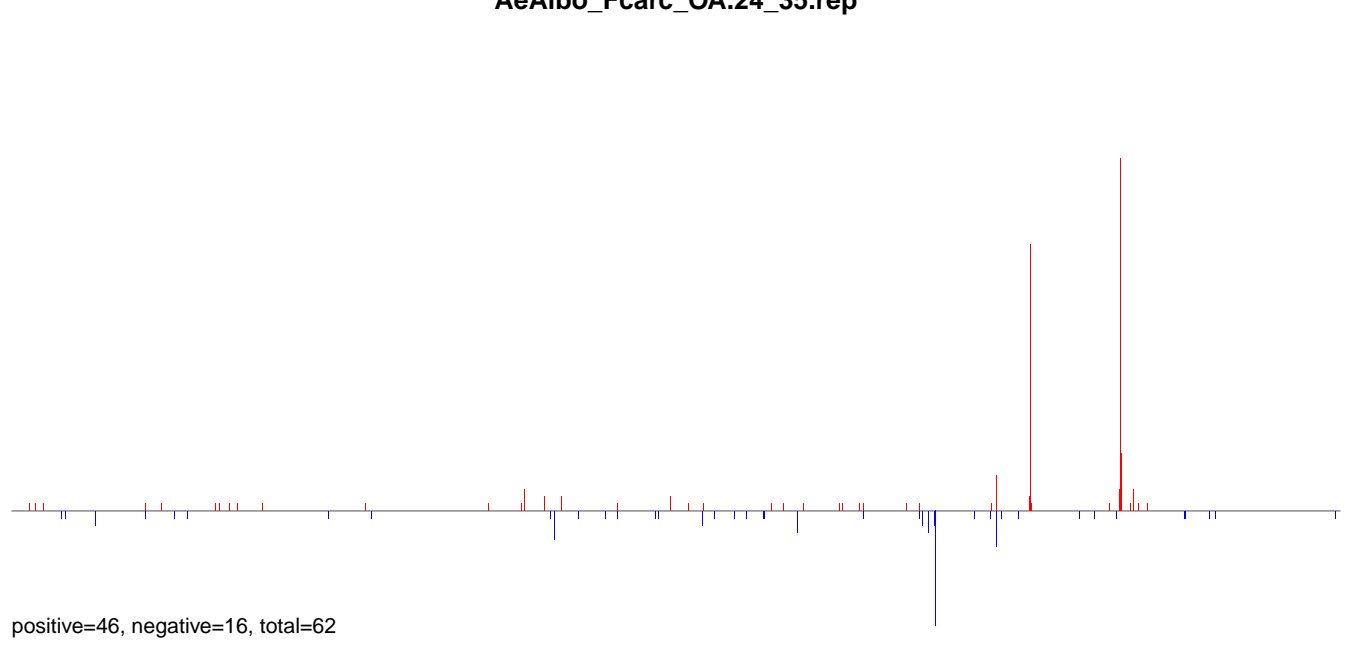
Window size=50, length=1445873, Wolbachia@Wolbachia\_wRi:1-1445873



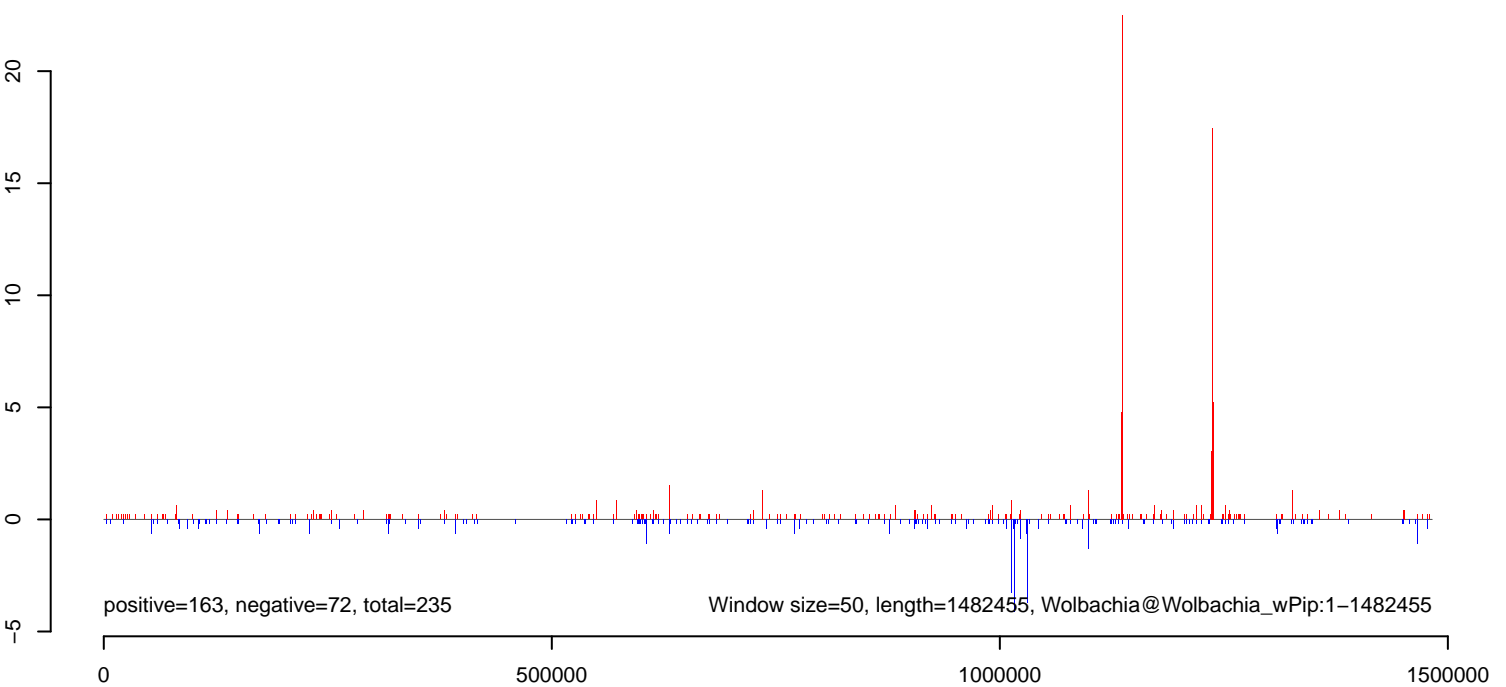
**AeAlbo\_Fcarc\_OA.18\_23.rep**



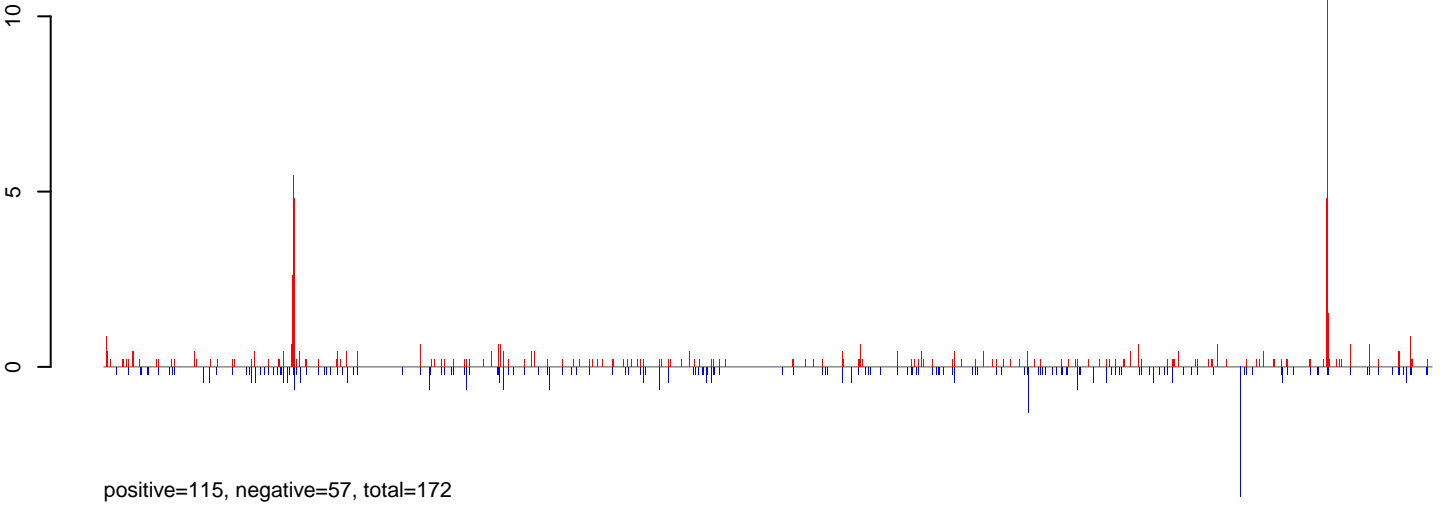
**AeAlbo\_Fcarc\_OA.24\_35.rep**



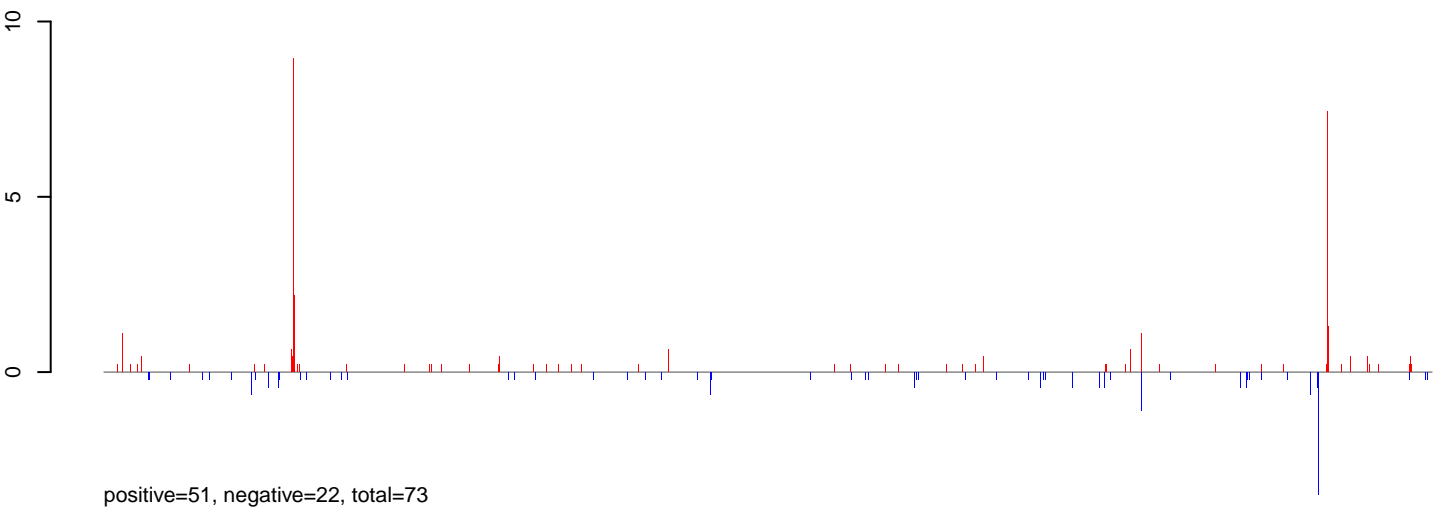
**AeAlbo\_Fcarc\_OA.rep**



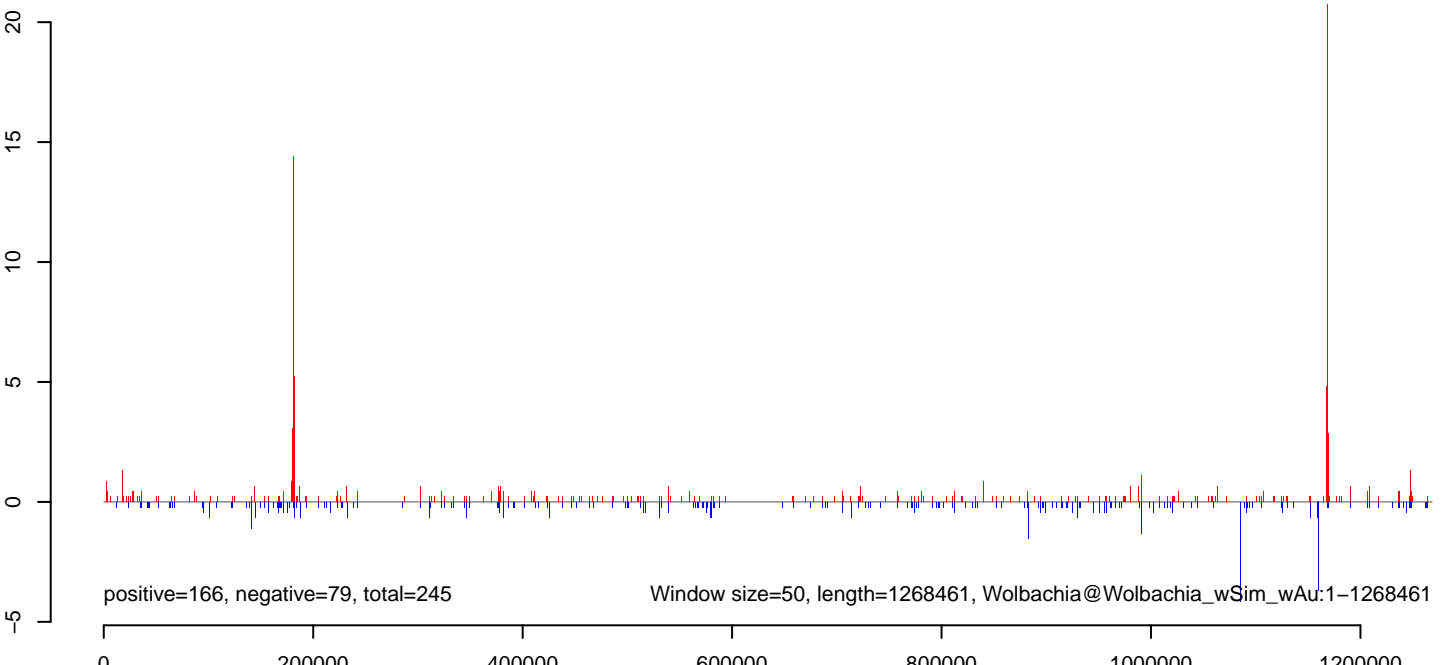
**AeAlbo\_Fcirc\_OA.18\_23.rep**



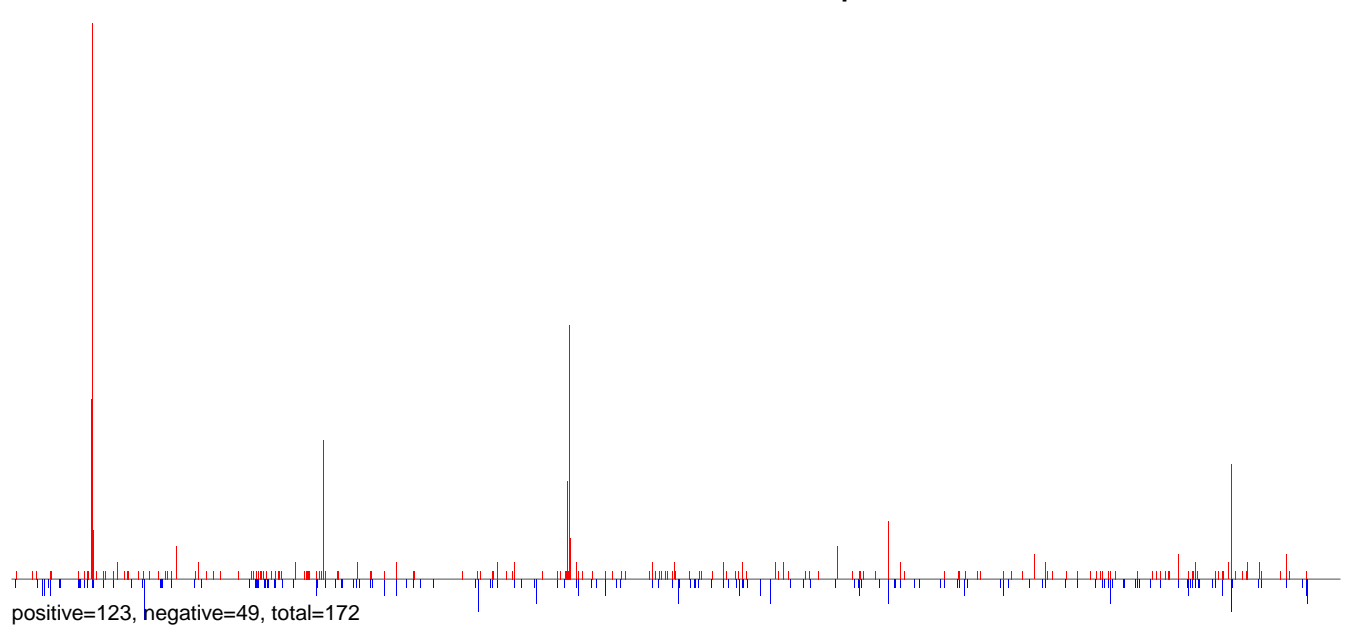
**AeAlbo\_Fcirc\_OA.24\_35.rep**



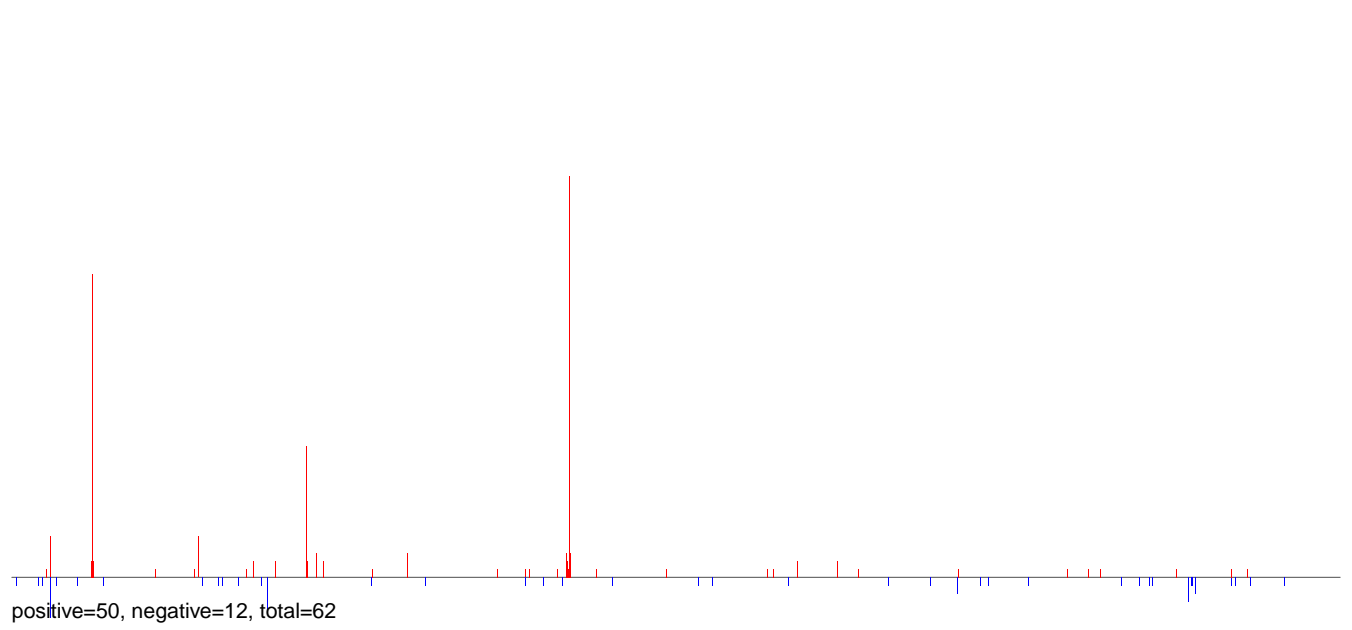
**AeAlbo\_Fcirc\_OA.rep**



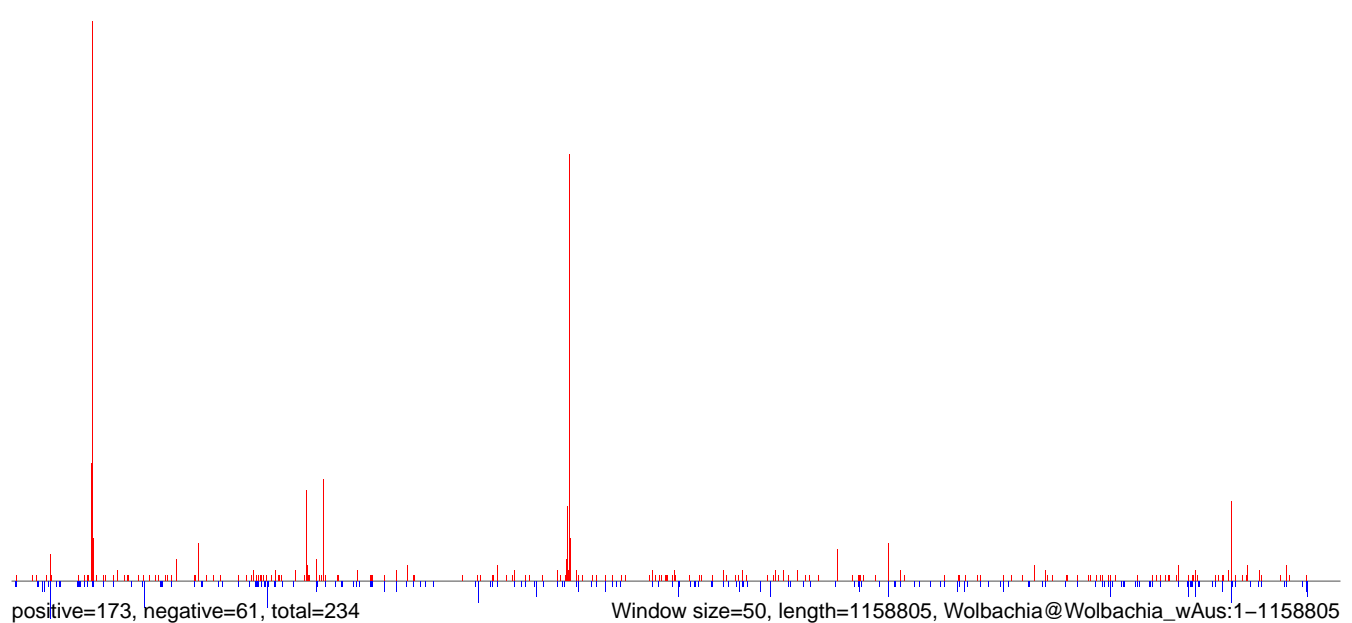
**AeAlbo\_Fcarc\_OA.18\_23.rep**



**AeAlbo\_Fcarc\_OA.24\_35.rep**

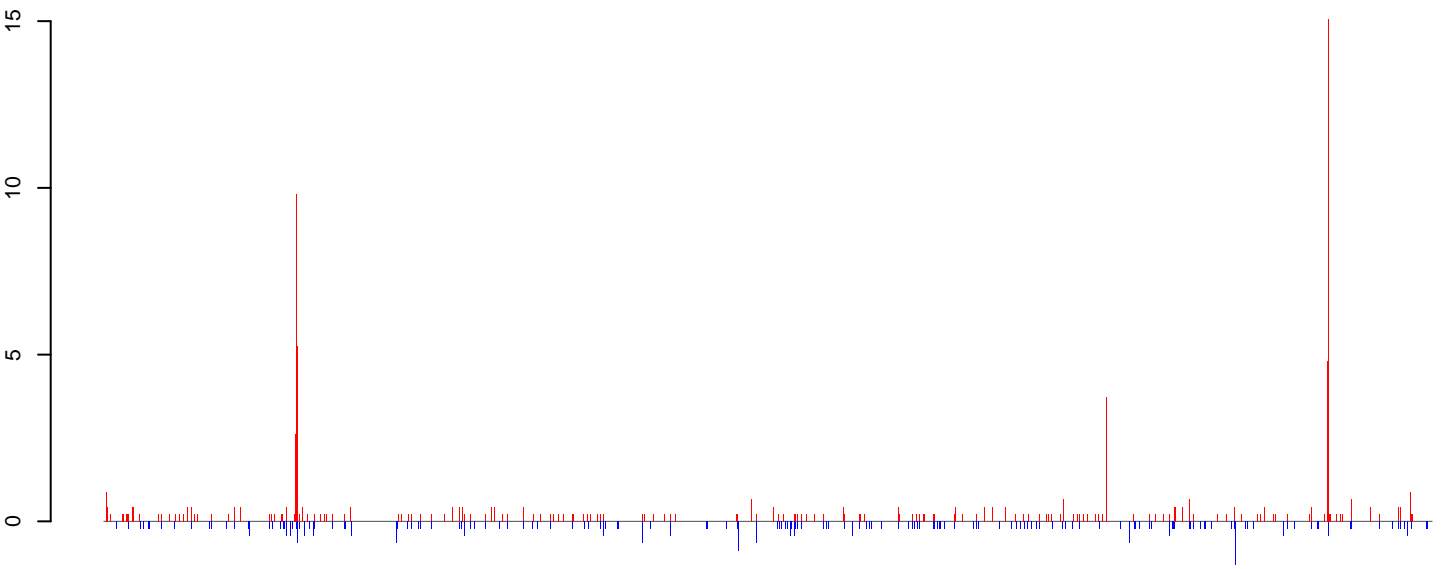


**AeAlbo\_Fcarc\_OA.rep**



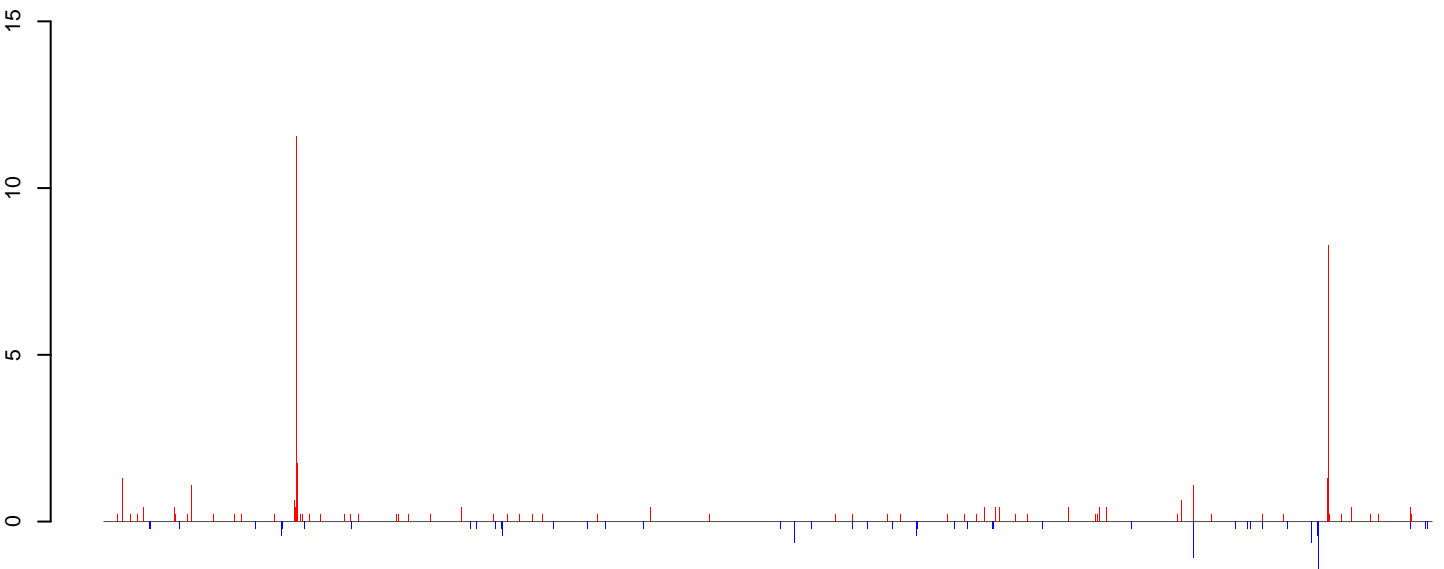


**AeAlbo\_FcArc\_OA.18\_23.rep**



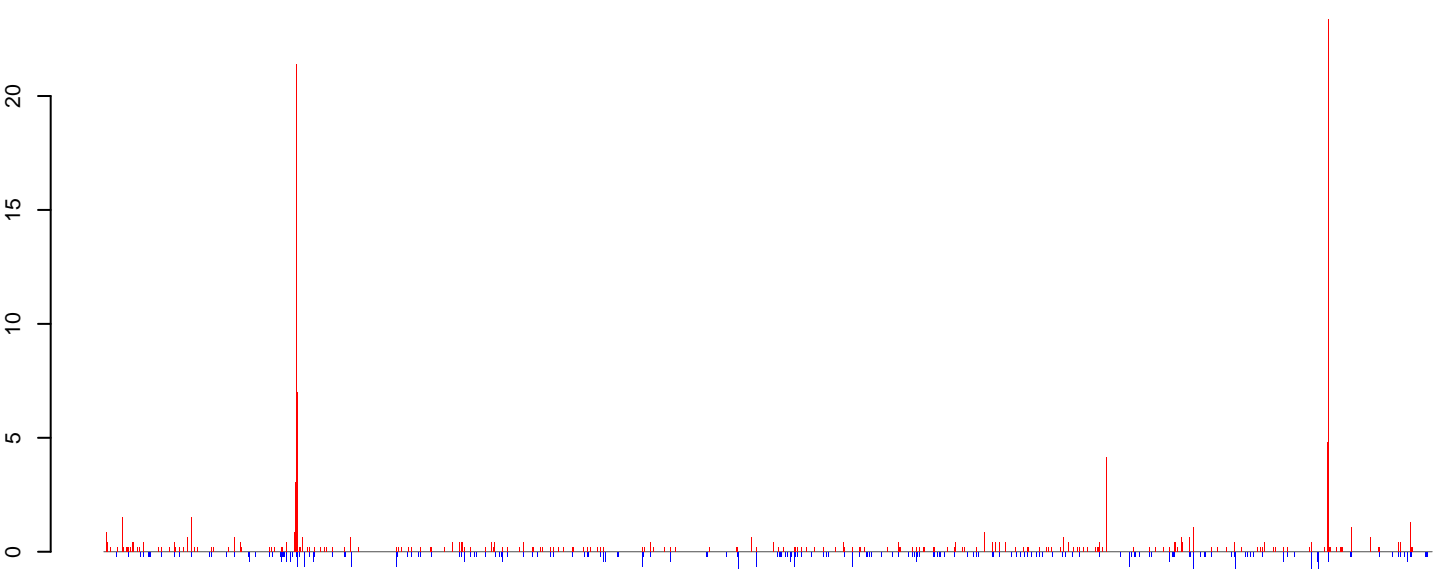
positive=120, negative=47, total=166

**AeAlbo\_FcArc\_OA.24\_35.rep**



positive=56, negative=16, total=72

**AeAlbo\_FcArc\_OA.rep**

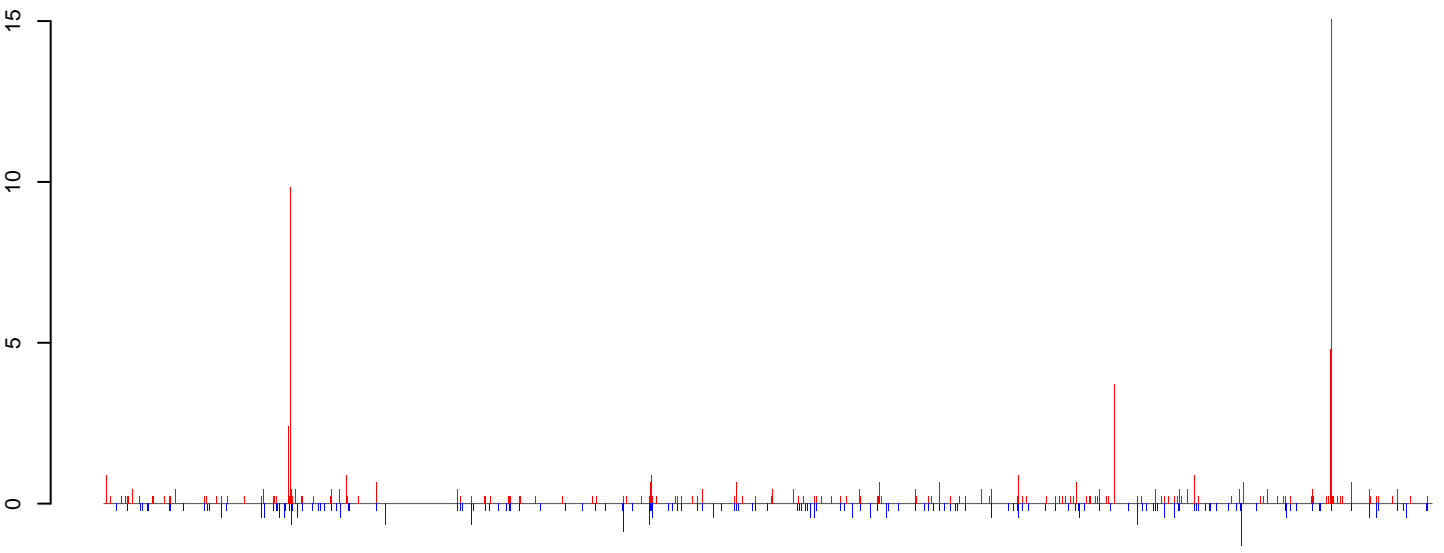


positive=175, negative=62, total=238

Window size=50, length=1267782, Wolbachia@Wolbachia\_wMel:1-1267782

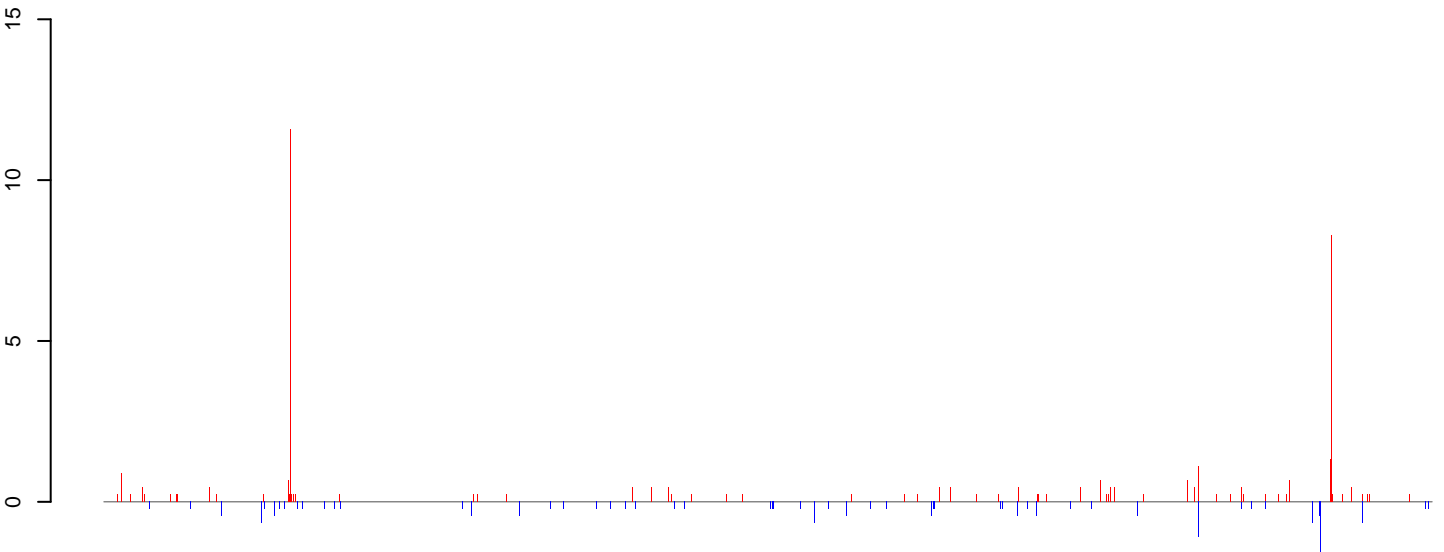
0 200000 400000 600000 800000 1000000 1200000

**AeAlbo\_Fcarc\_OA.18\_23.rep**



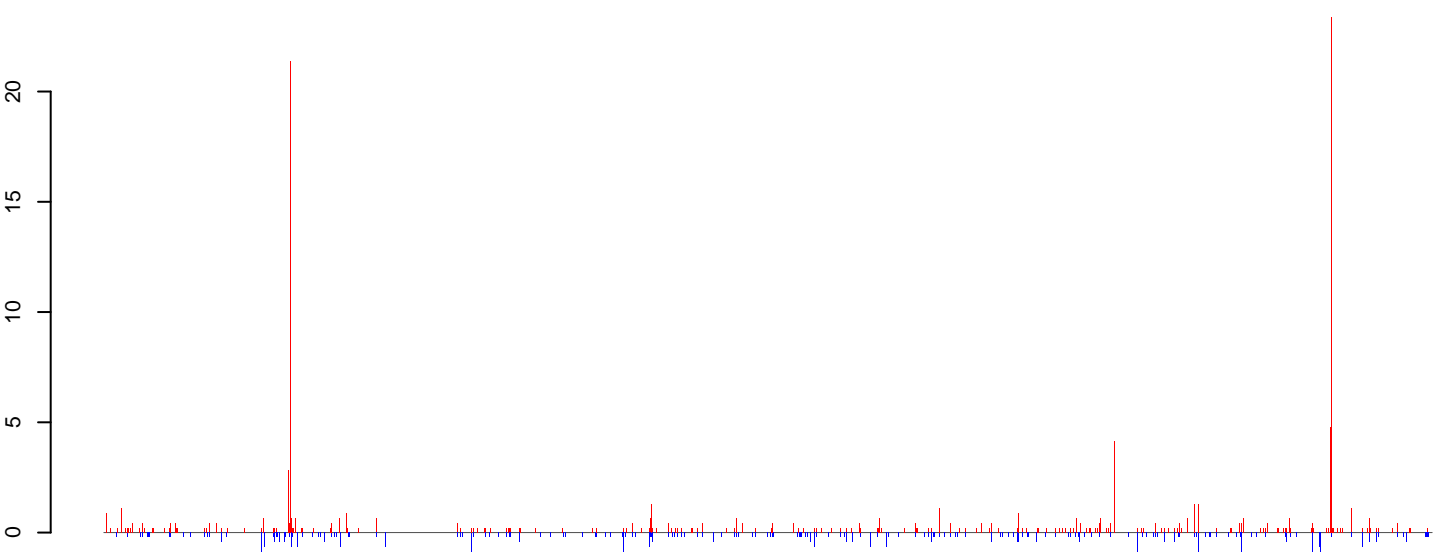
positive=121, negative=50, total=170

**AeAlbo\_Fcarc\_OA.24\_35.rep**



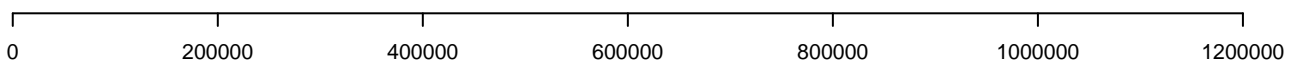
positive=57, negative=22, total=78

**AeAlbo\_Fcarc\_OA.rep**

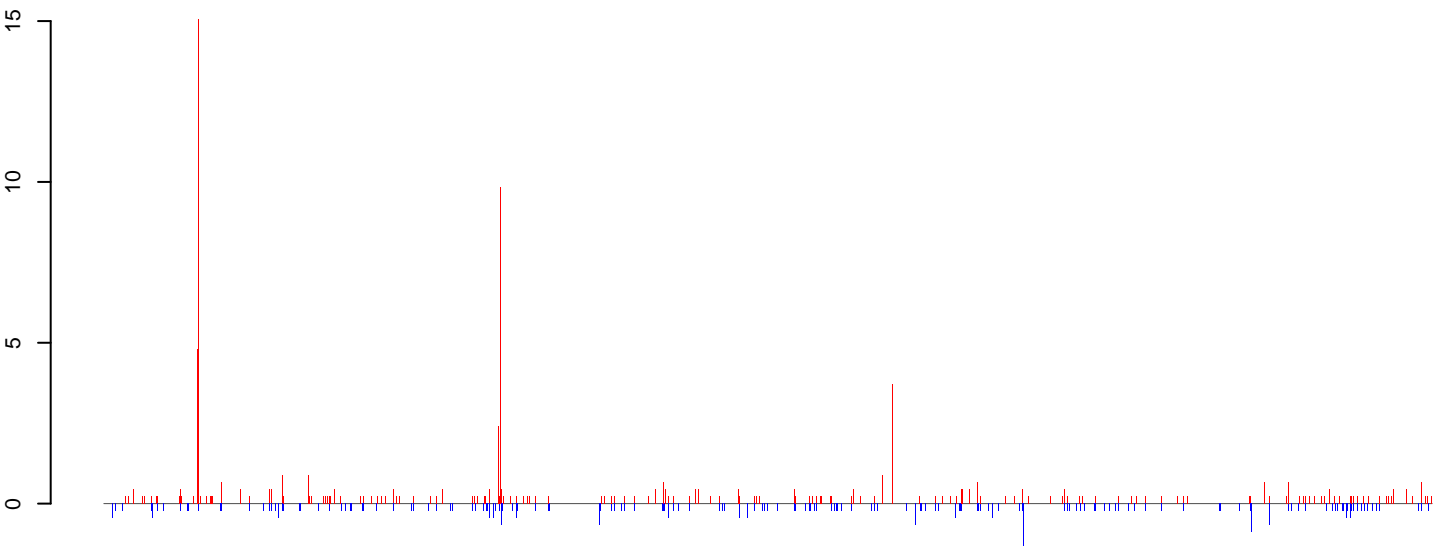


positive=177, negative=71, total=248

Window size=50, length=1295804, Wolbachia@Wolbachia\_wSim\_wHa:1-1295804

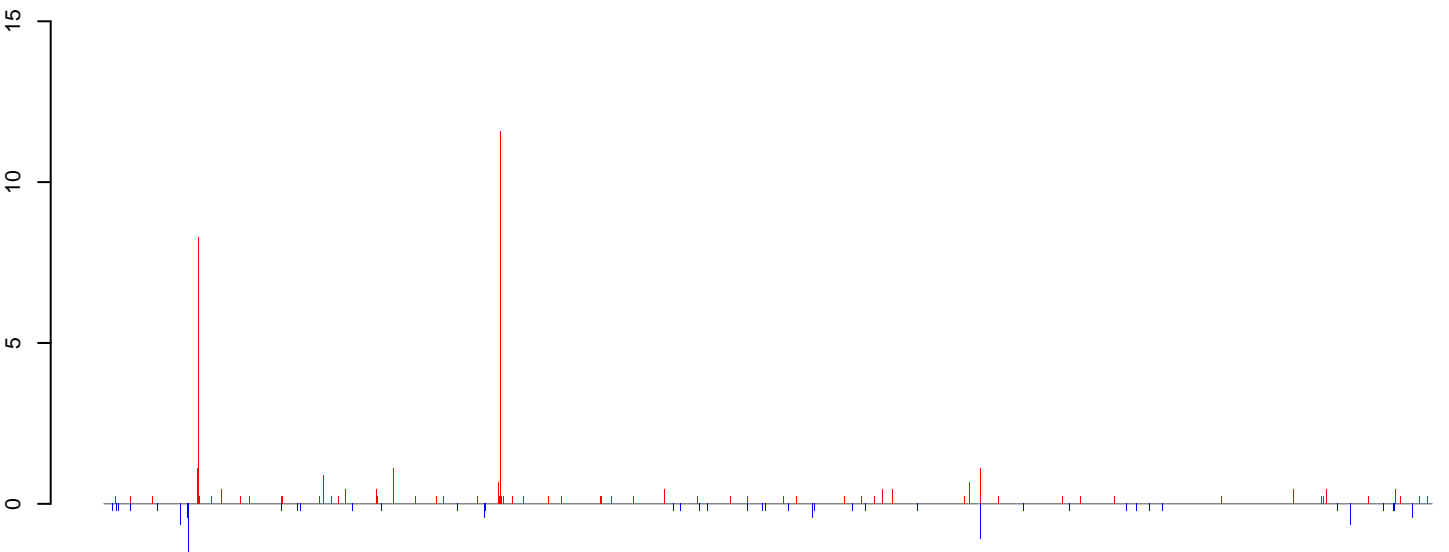


**AeAlbo\_FcArc\_OA.18\_23.rep**



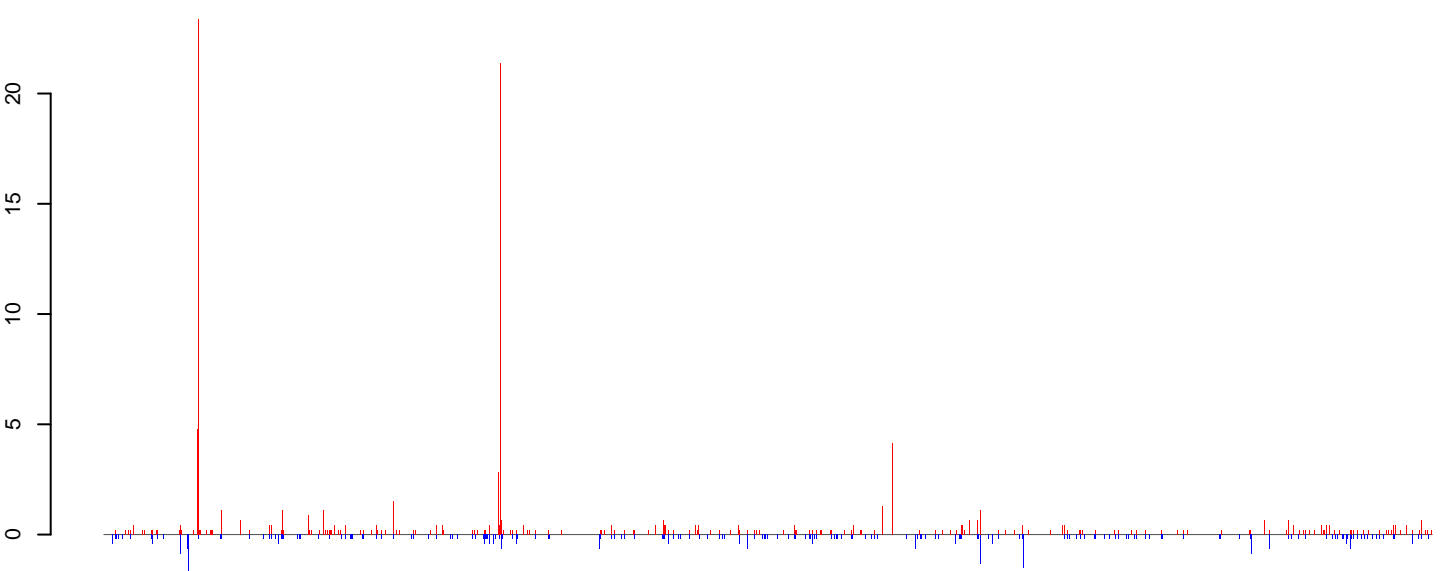
positive=118, negative=45, total=163

**AeAlbo\_FcArc\_OA.24\_35.rep**



positive=54, negative=16, total=70

**AeAlbo\_FcArc\_OA.rep**

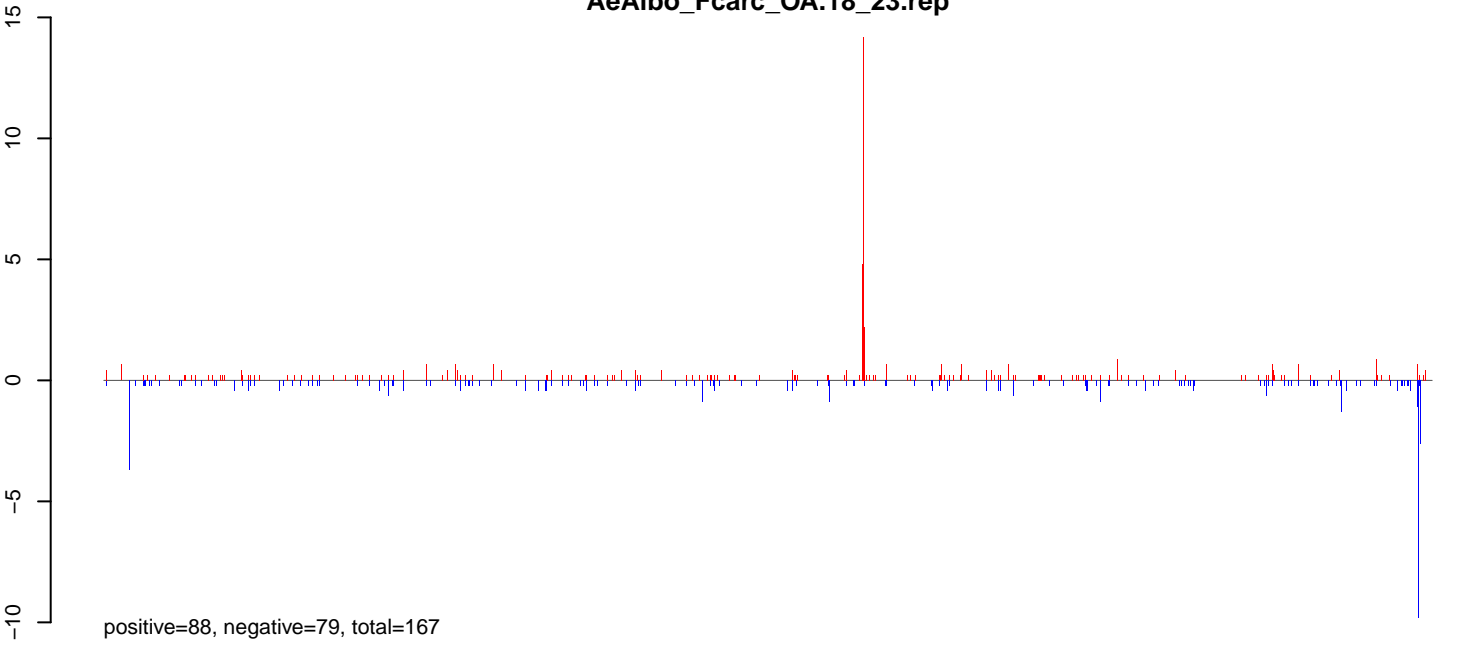


positive=172, negative=61, total=233

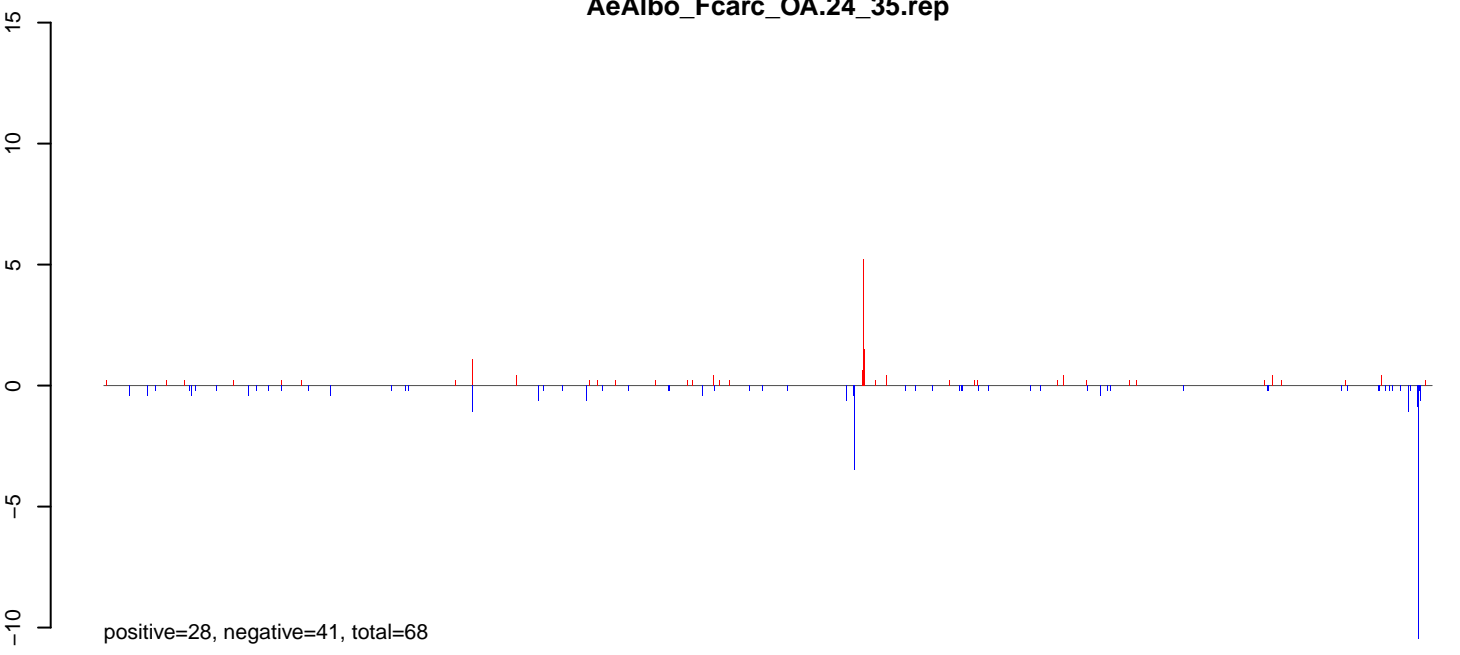
Window size=50, length=1239155, Wolbachia@Wolbachia\_wMelPop:1-1239155

0 200000 400000 600000 800000 1000000 1200000

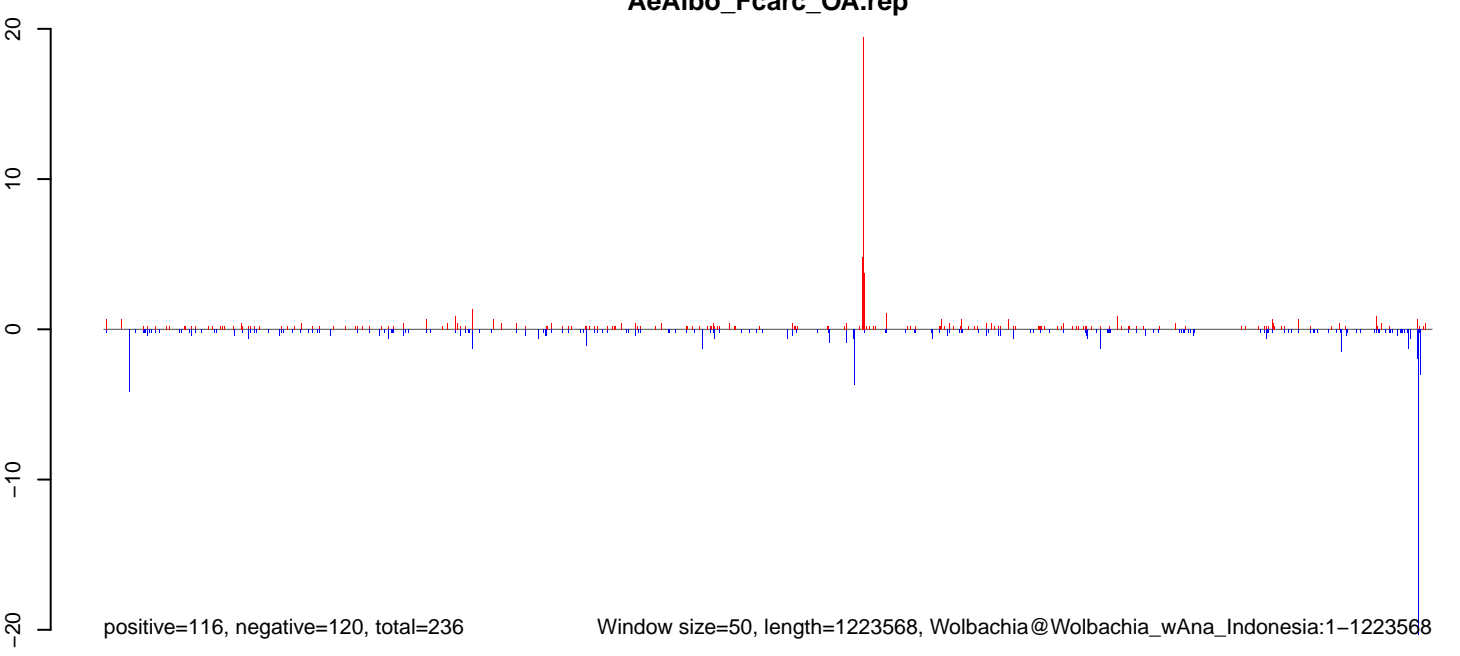
**AeAlbo\_Fcarc\_OA.18\_23.rep**



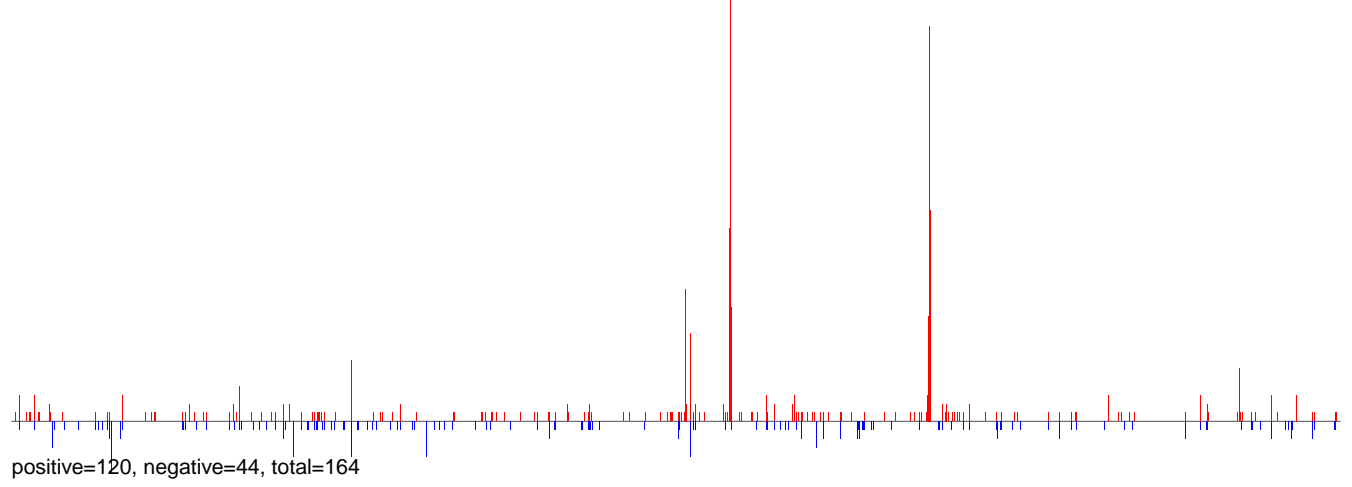
**AeAlbo\_Fcarc\_OA.24\_35.rep**



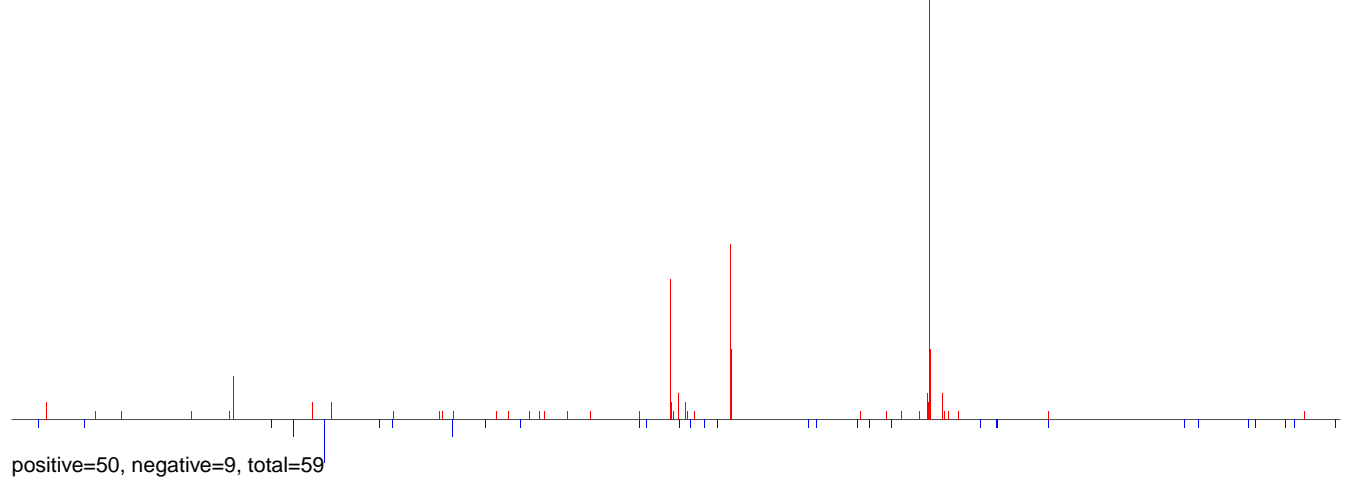
**AeAlbo\_Fcarc\_OA.rep**



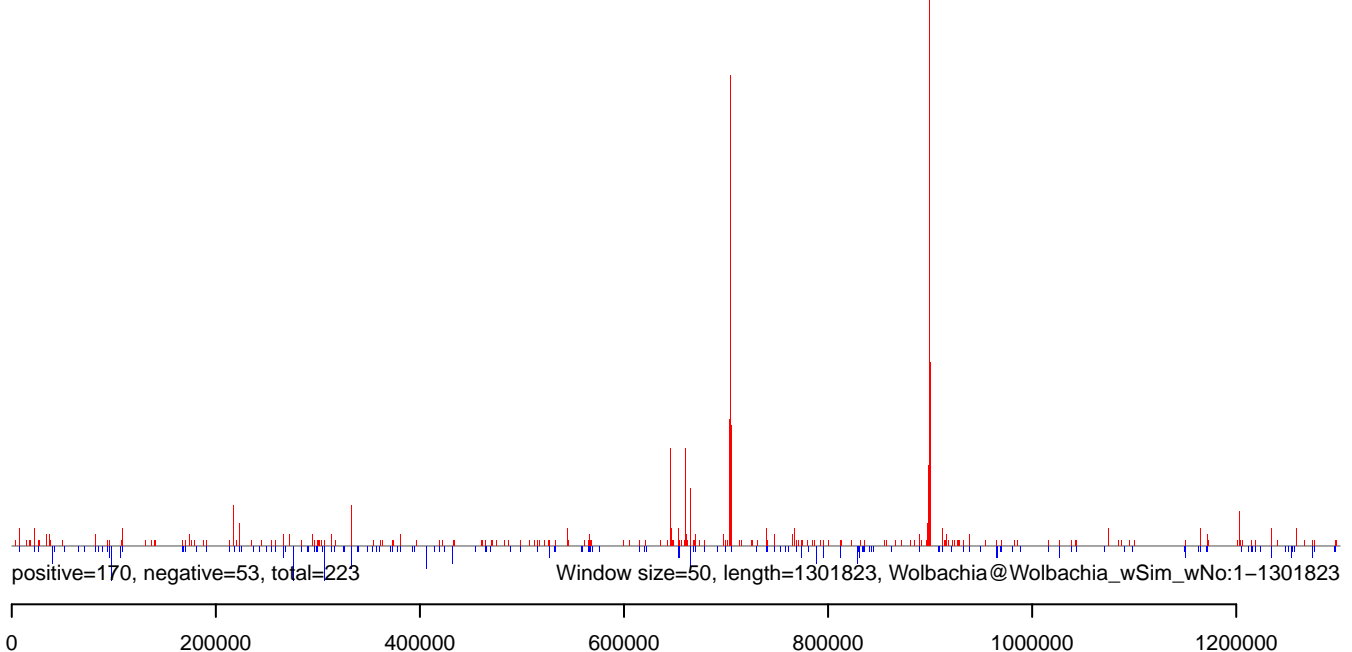
**AeAlbo\_Fcirc\_OA.18\_23.rep**



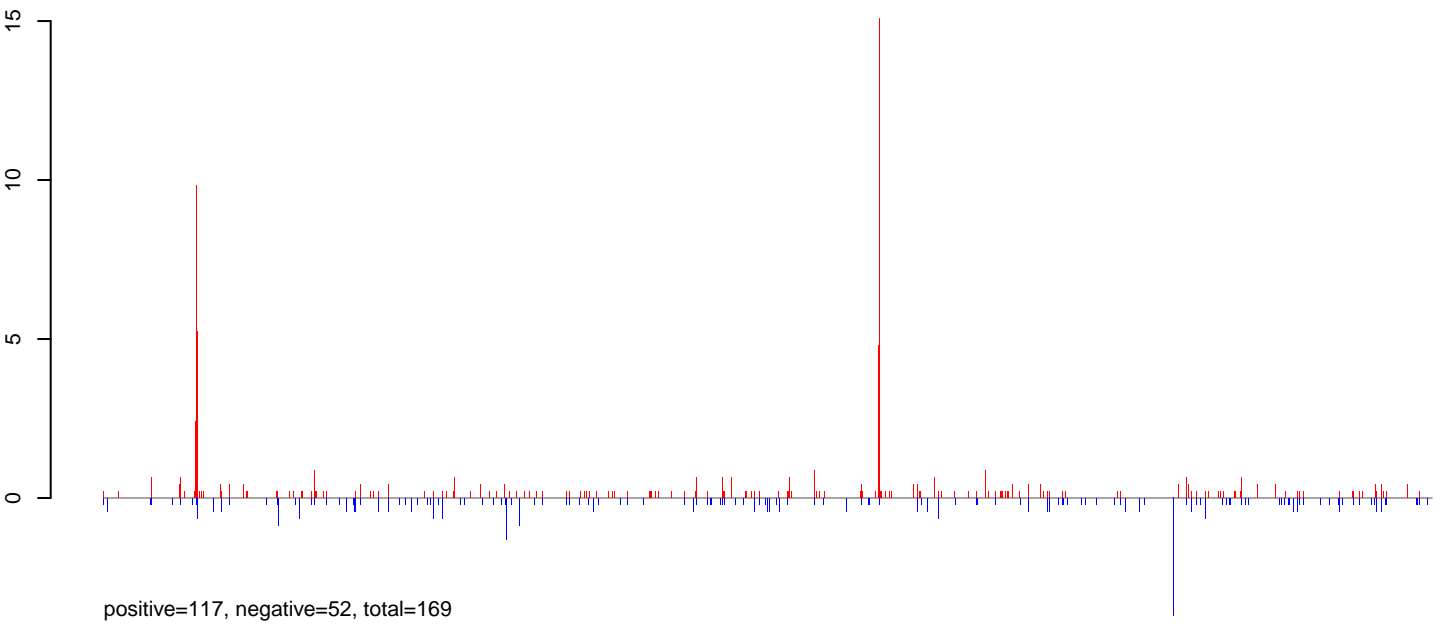
**AeAlbo\_Fcirc\_OA.24\_35.rep**



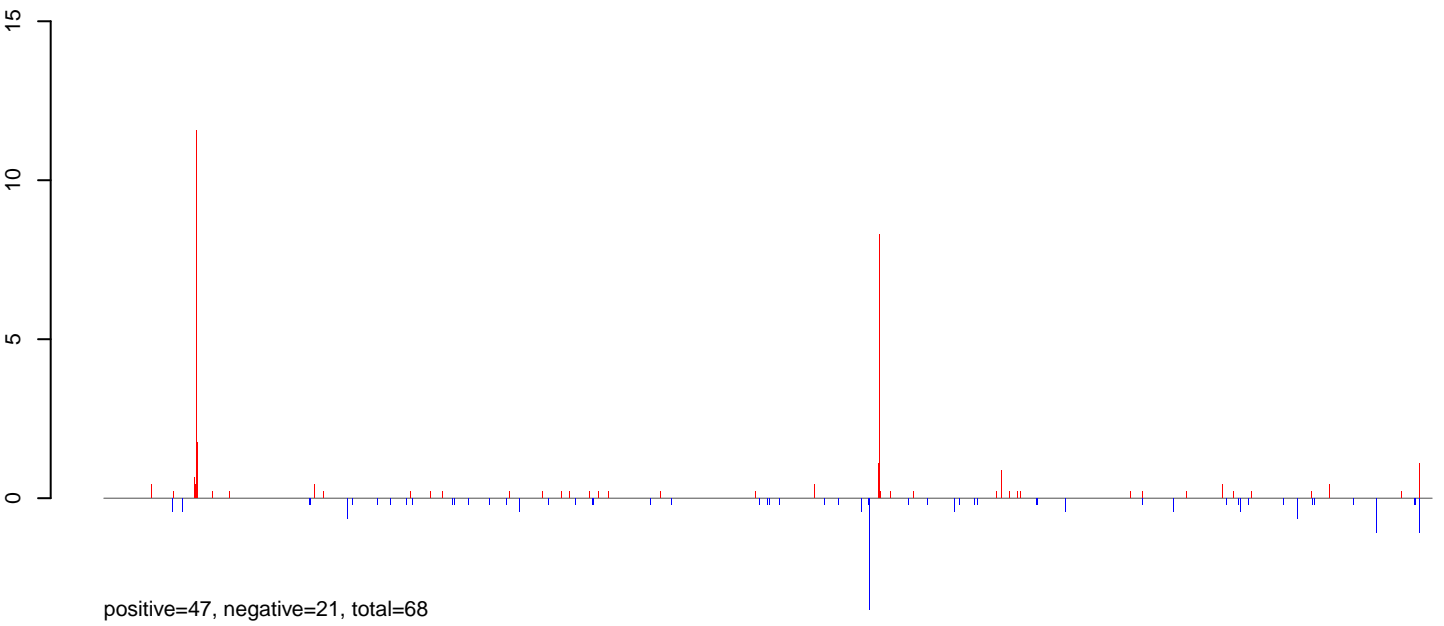
**AeAlbo\_Fcirc\_OA.rep**



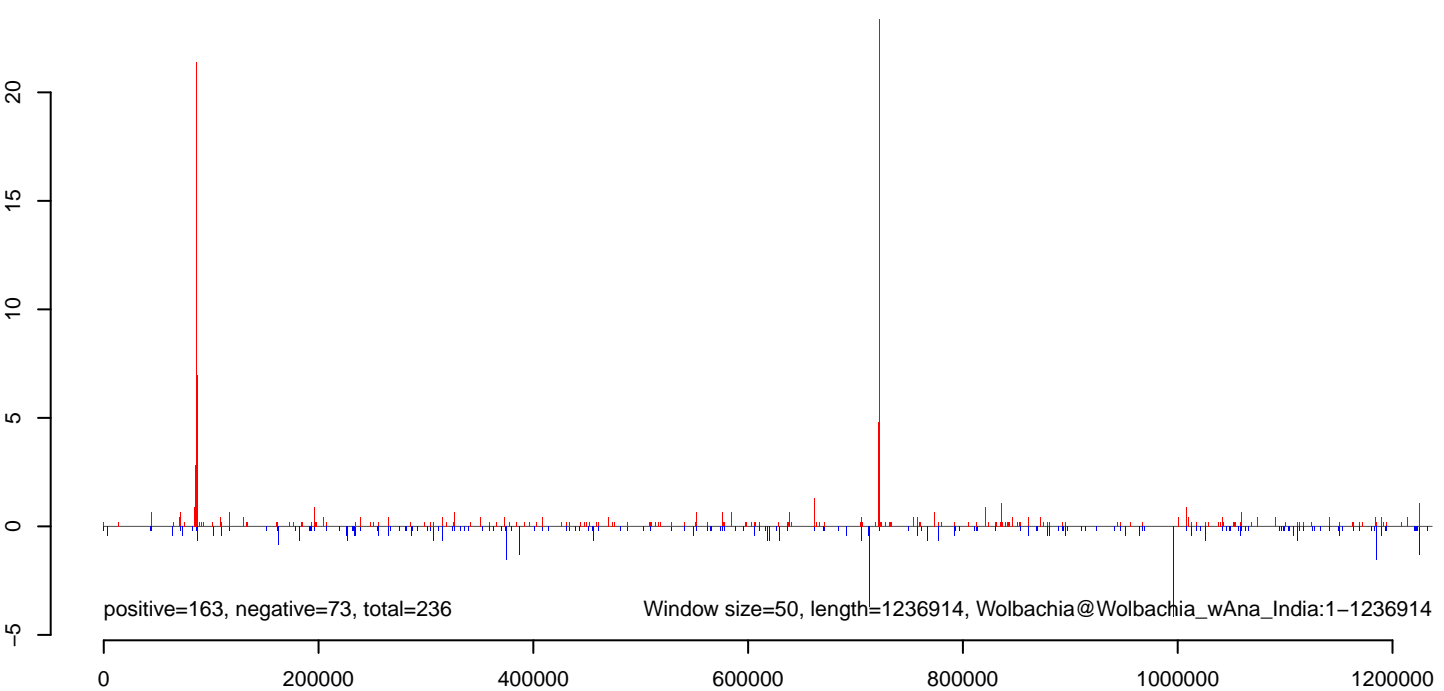
**AeAlbo\_Fcirc\_OA.18\_23.rep**



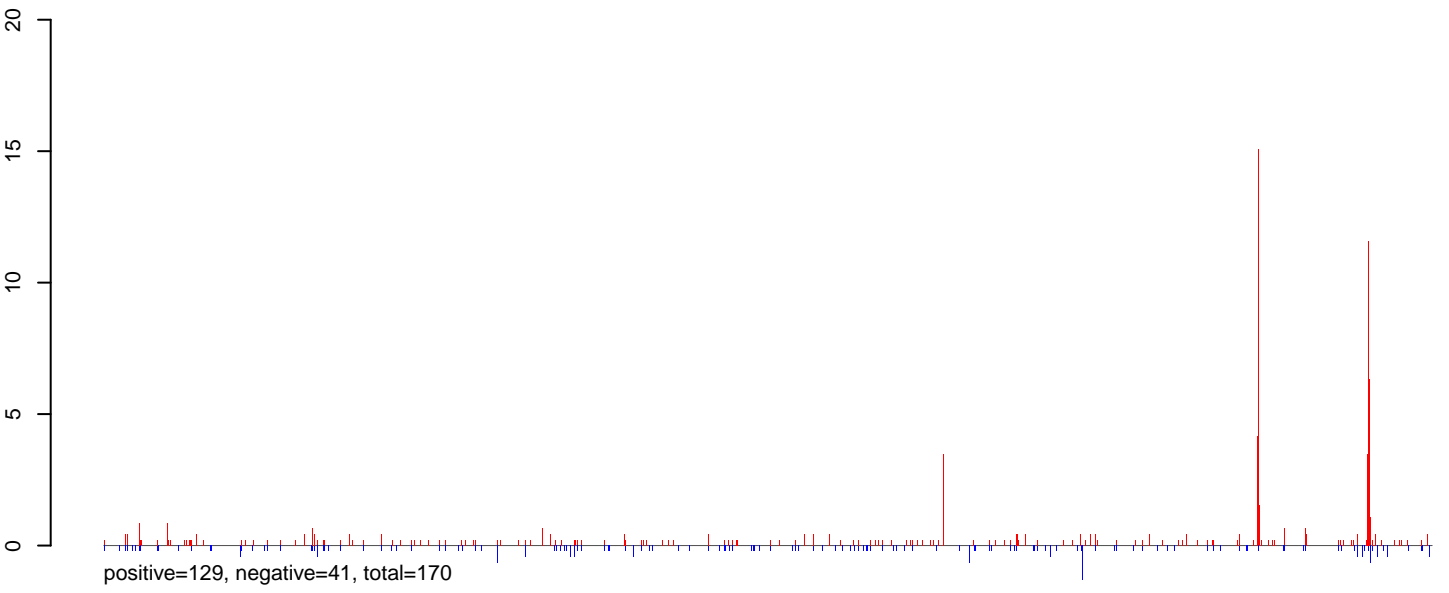
**AeAlbo\_Fcirc\_OA.24\_35.rep**



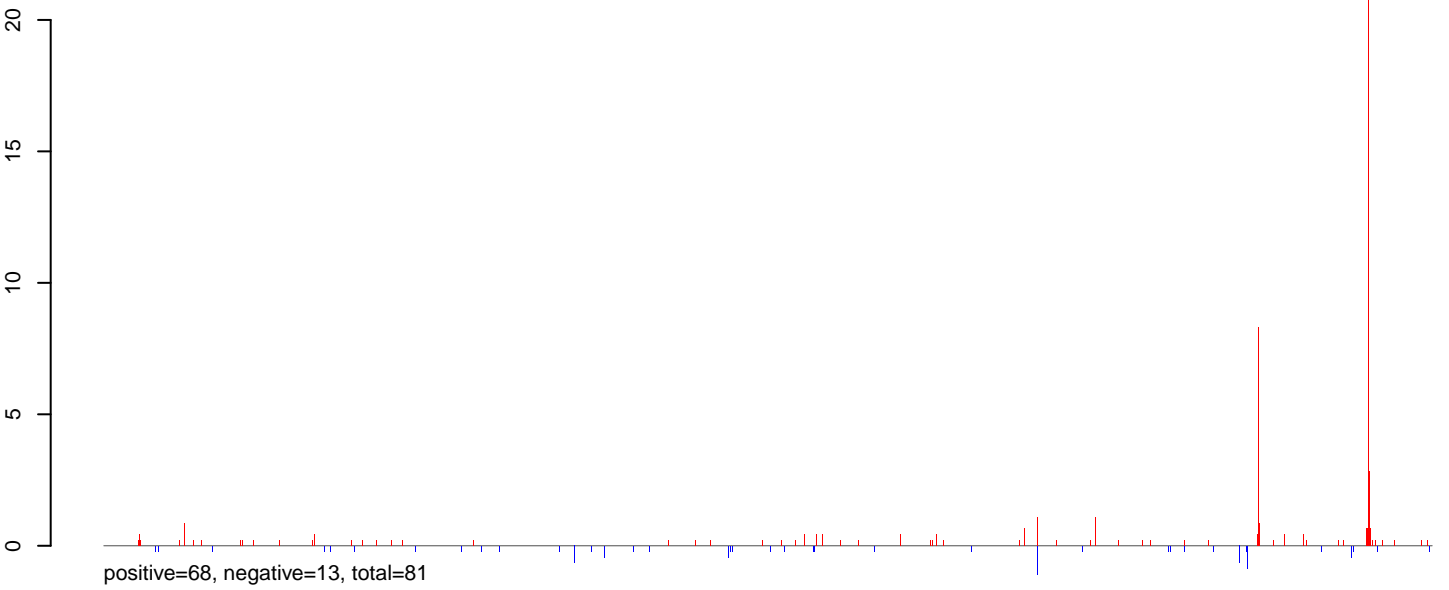
**AeAlbo\_Fcirc\_OA.rep**



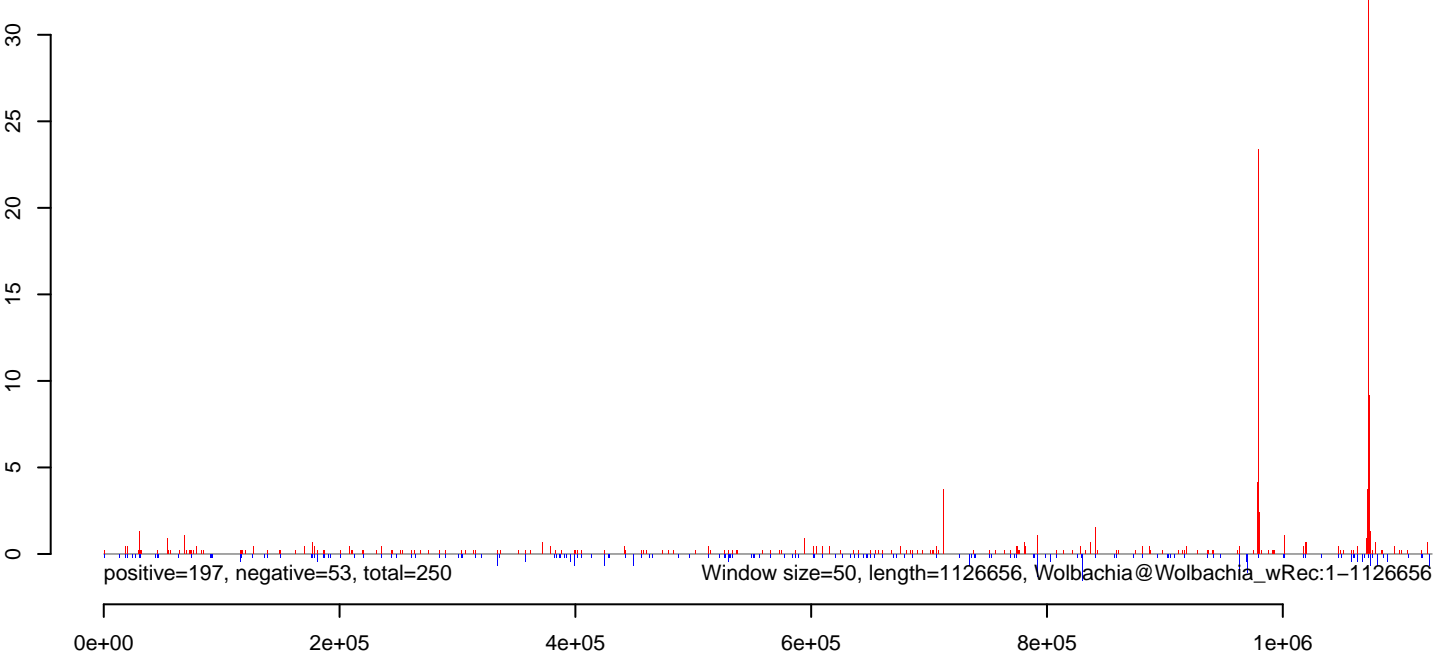
**AeAlbo\_Fcarc\_OA.18\_23.rep**



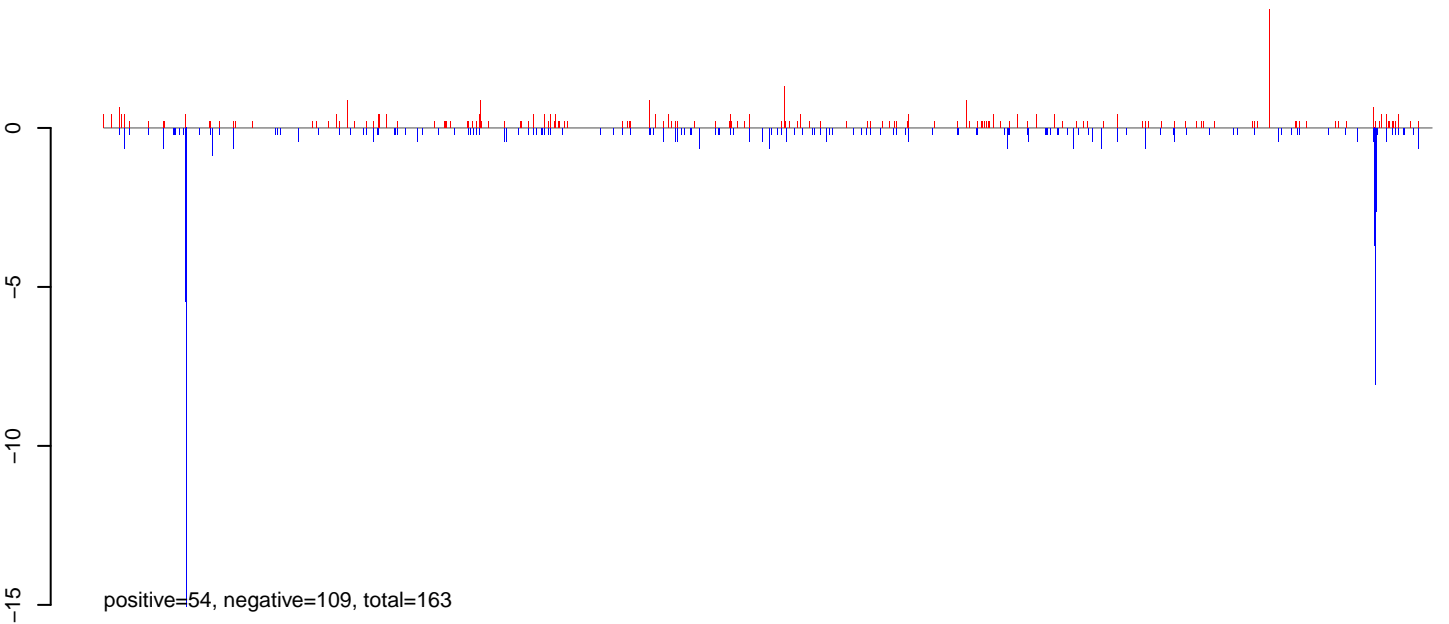
**AeAlbo\_Fcarc\_OA.24\_35.rep**



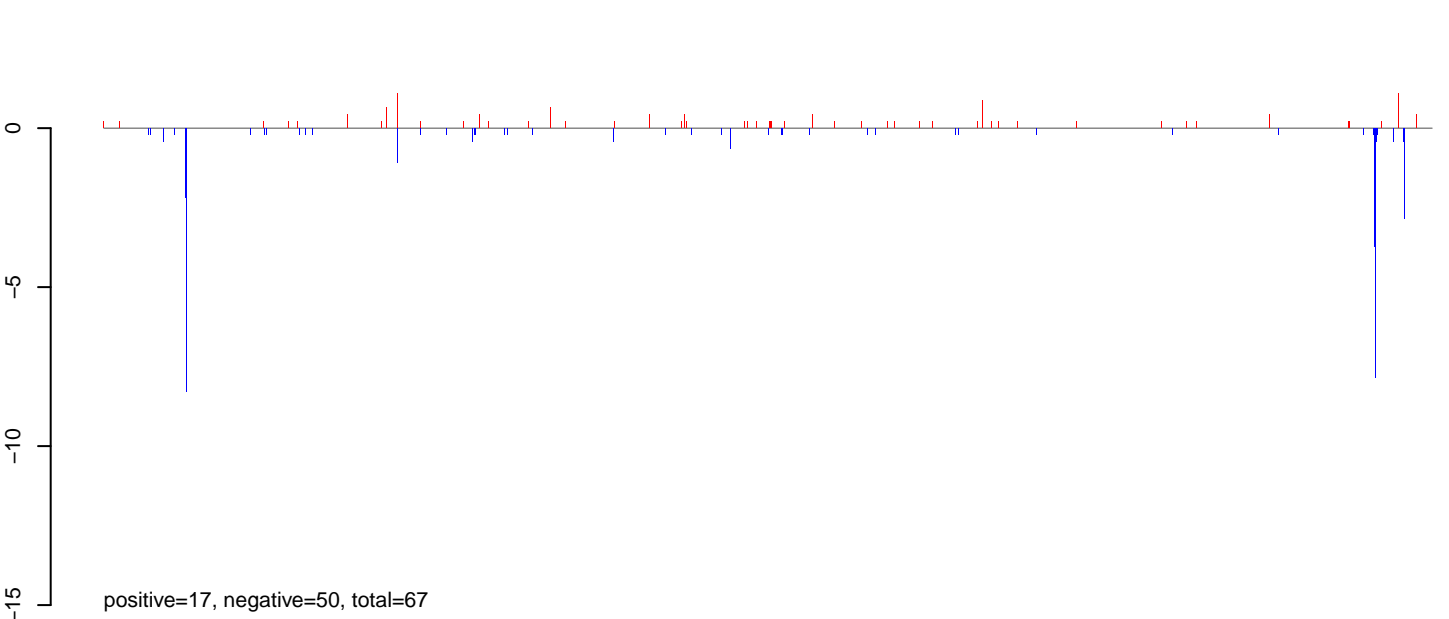
**AeAlbo\_Fcarc\_OA.rep**



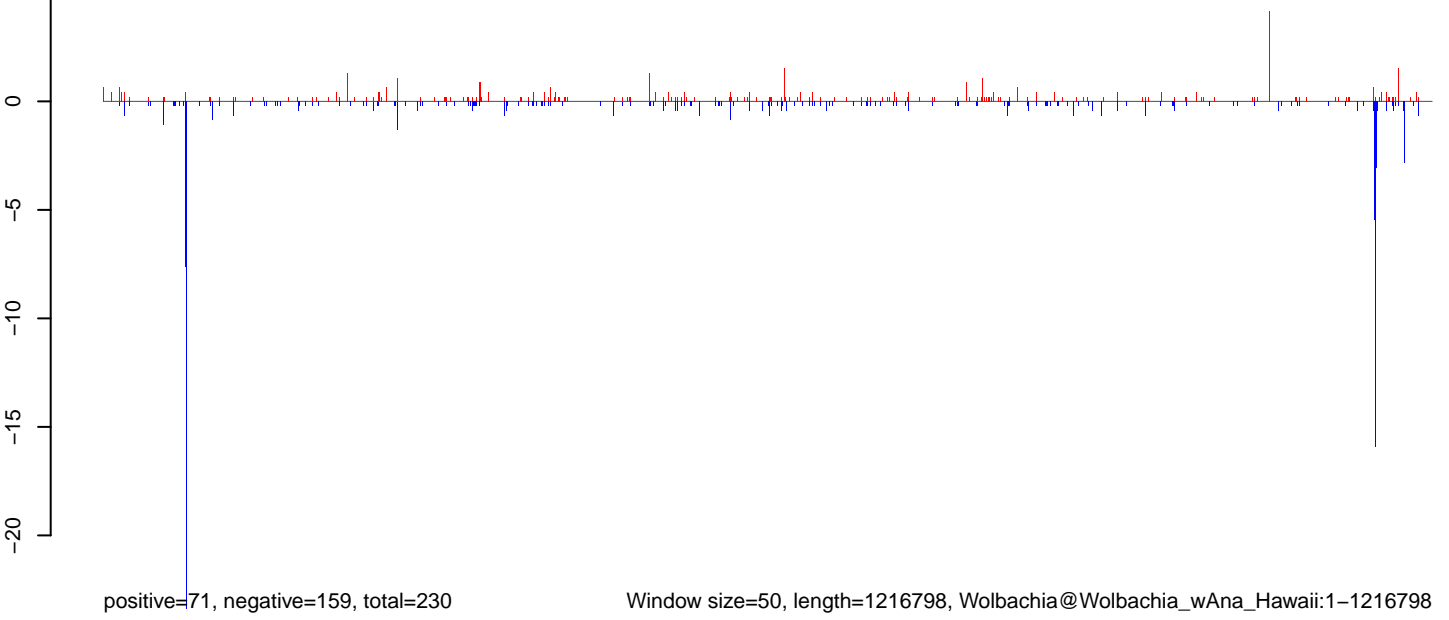
**AeAlbo\_Fcirc\_OA.18\_23.rep**



**AeAlbo\_Fcirc\_OA.24\_35.rep**

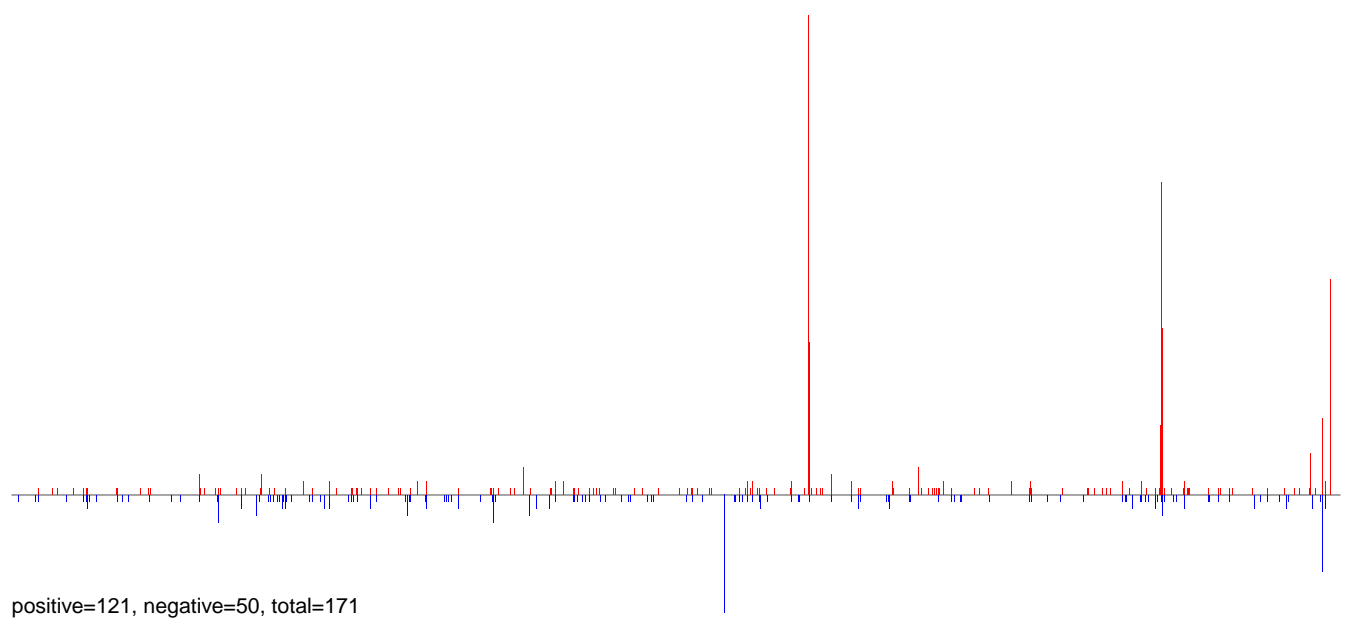


**AeAlbo\_Fcirc\_OA.rep**

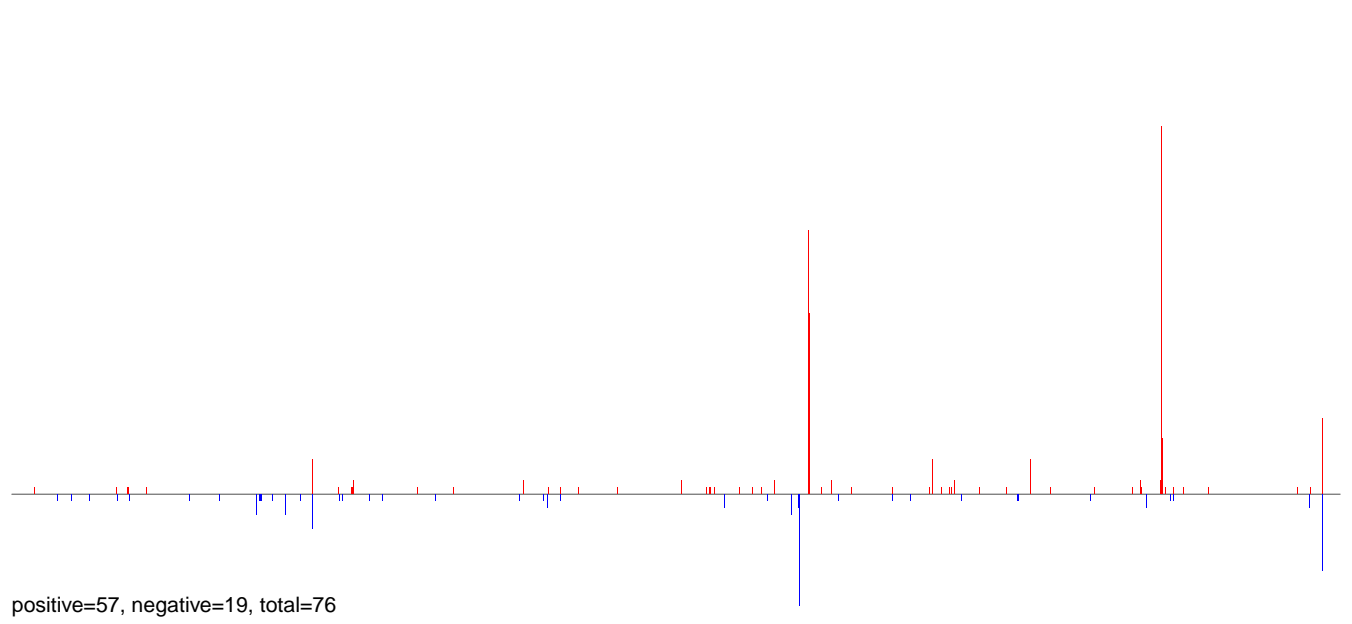




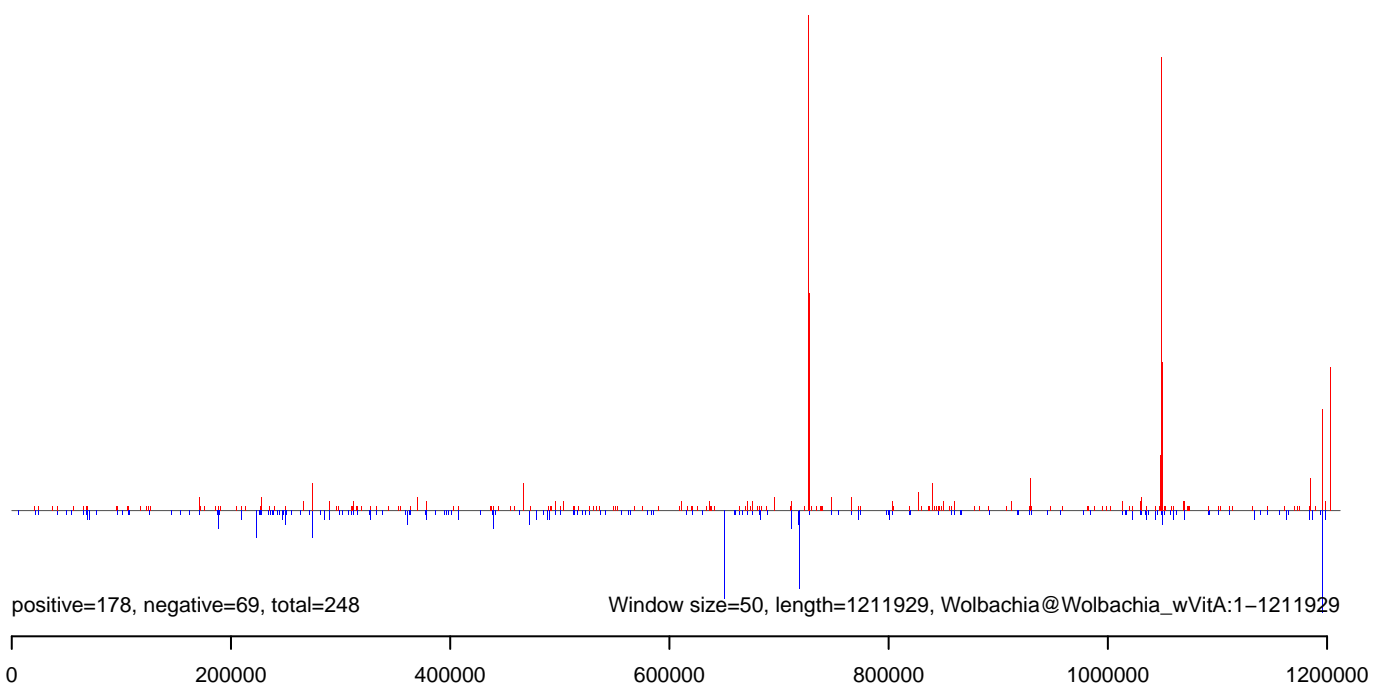
**AeAlbo\_Fcirc\_OA.18\_23.rep**



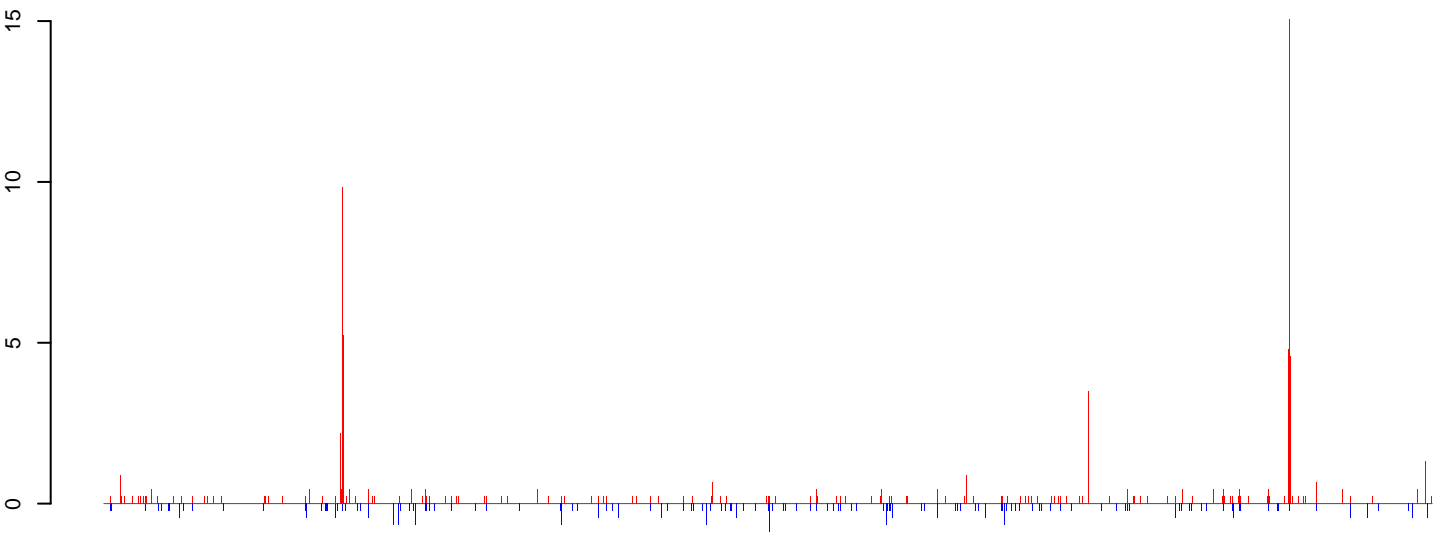
**AeAlbo\_Fcirc\_OA.24\_35.rep**



**AeAlbo\_Fcirc\_OA.rep**

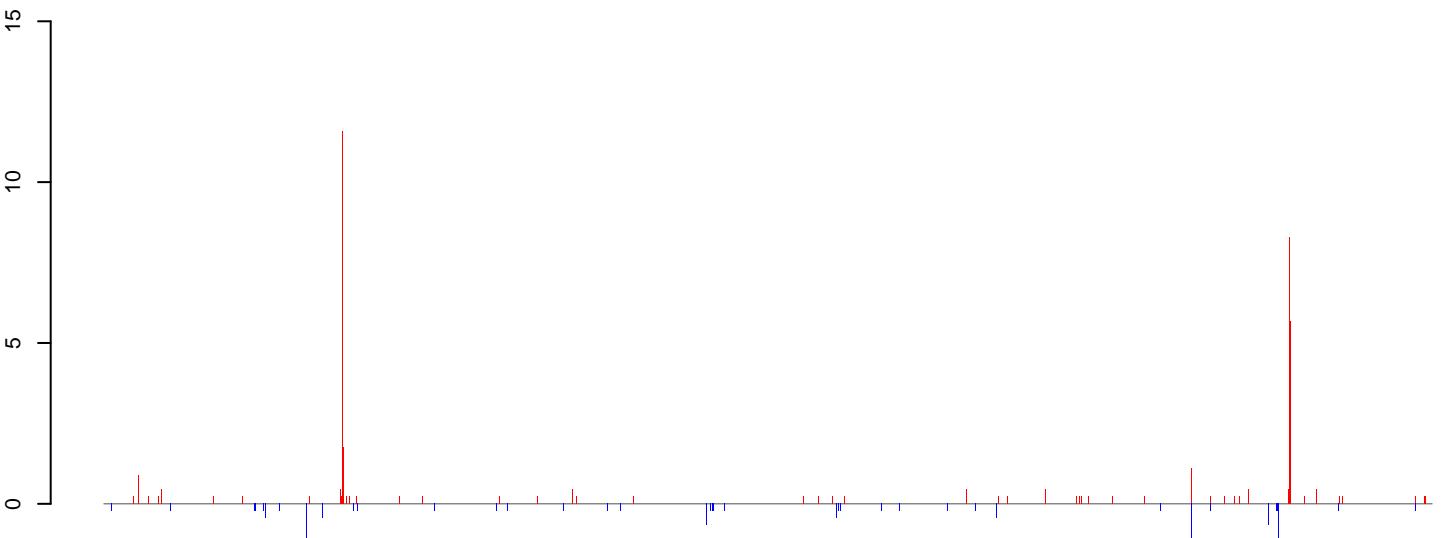


**AeAlbo\_Fcarc\_OA.18\_23.rep**



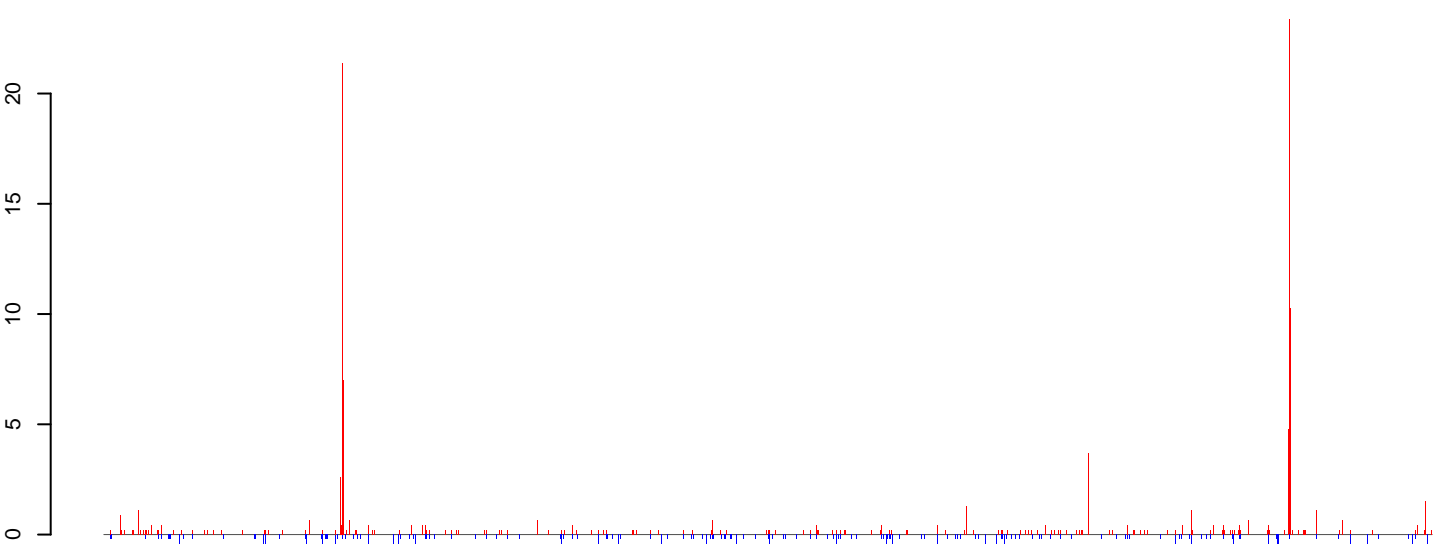
positive=110, negative=39, total=149

**AeAlbo\_Fcarc\_OA.24\_35.rep**



positive=51, negative=16, total=66

**AeAlbo\_Fcarc\_OA.rep**

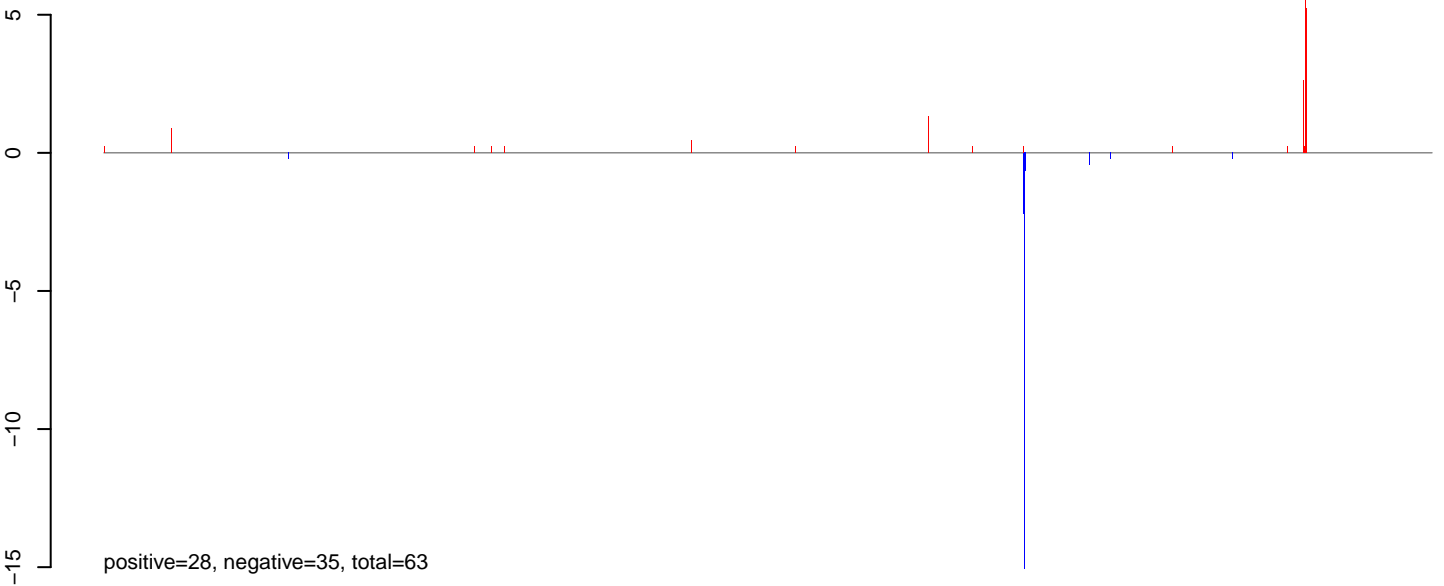


positive=161, negative=55, total=215

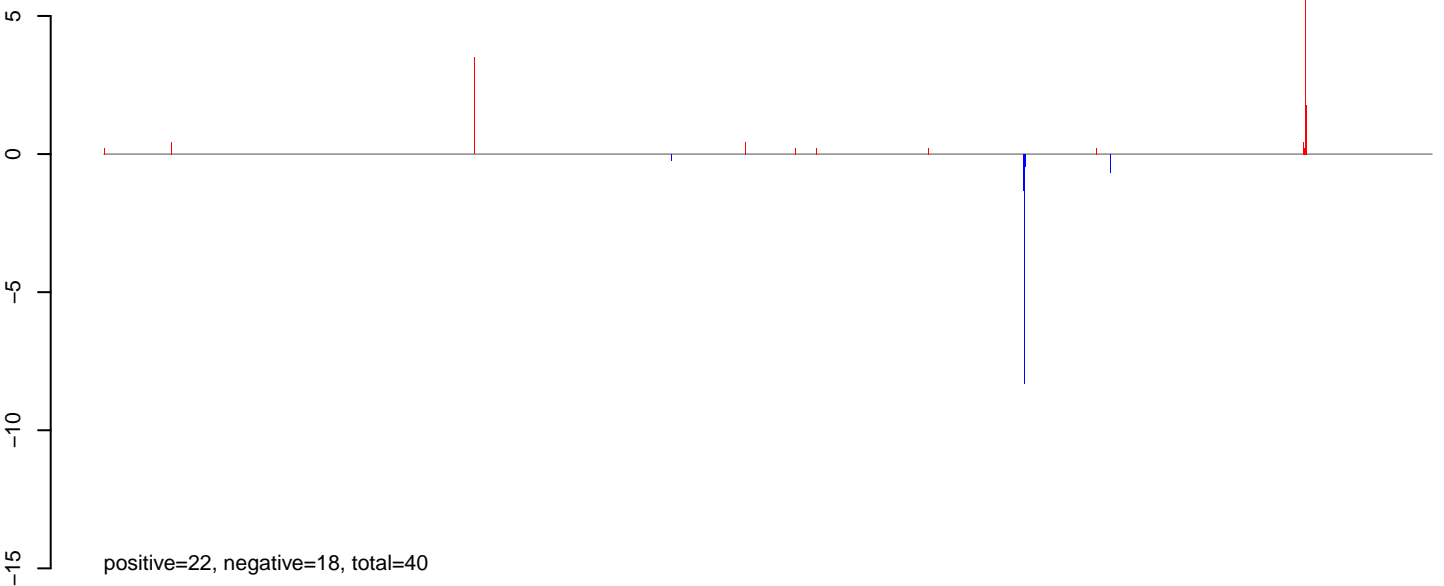
Window size=50, length=1049170, Wolbachia@Wolbachia\_wUni:1-1049170

0e+00 2e+05 4e+05 6e+05 8e+05 1e+06

**AeAlbo\_Fcarc\_OA.18\_23.rep**



**AeAlbo\_Fcarc\_OA.24\_35.rep**



**AeAlbo\_Fcarc\_OA.rep**

