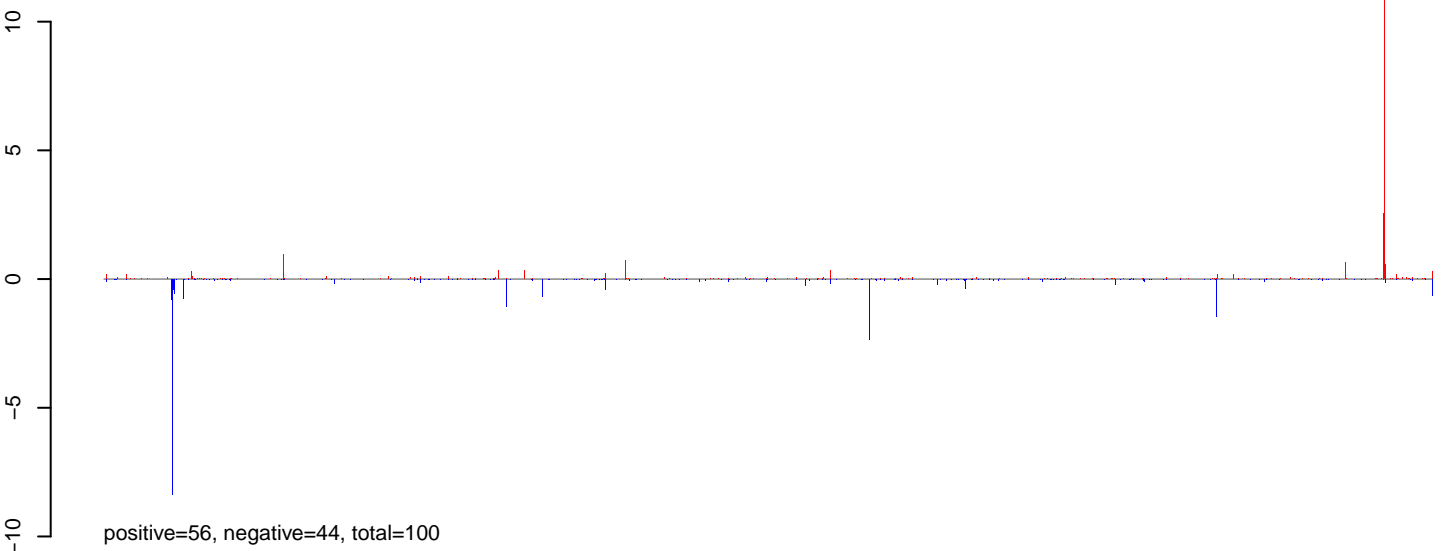
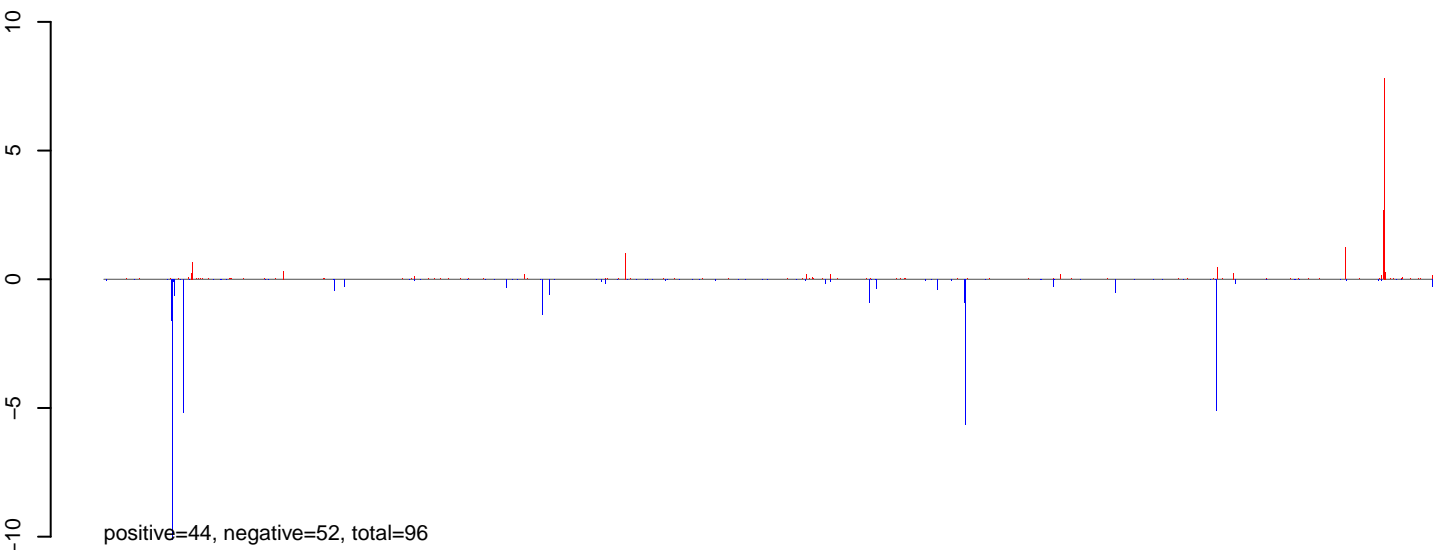


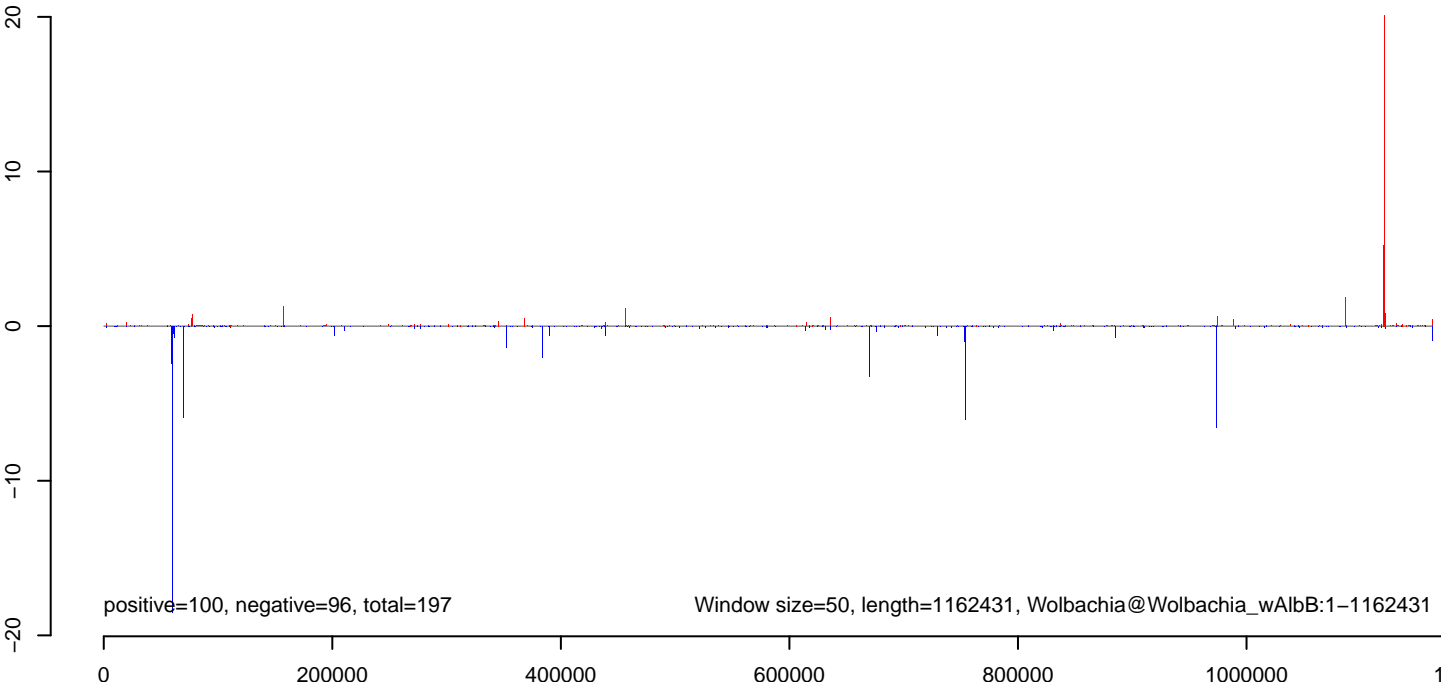
AeAlbo_Mcarc_OA.18_23.rep



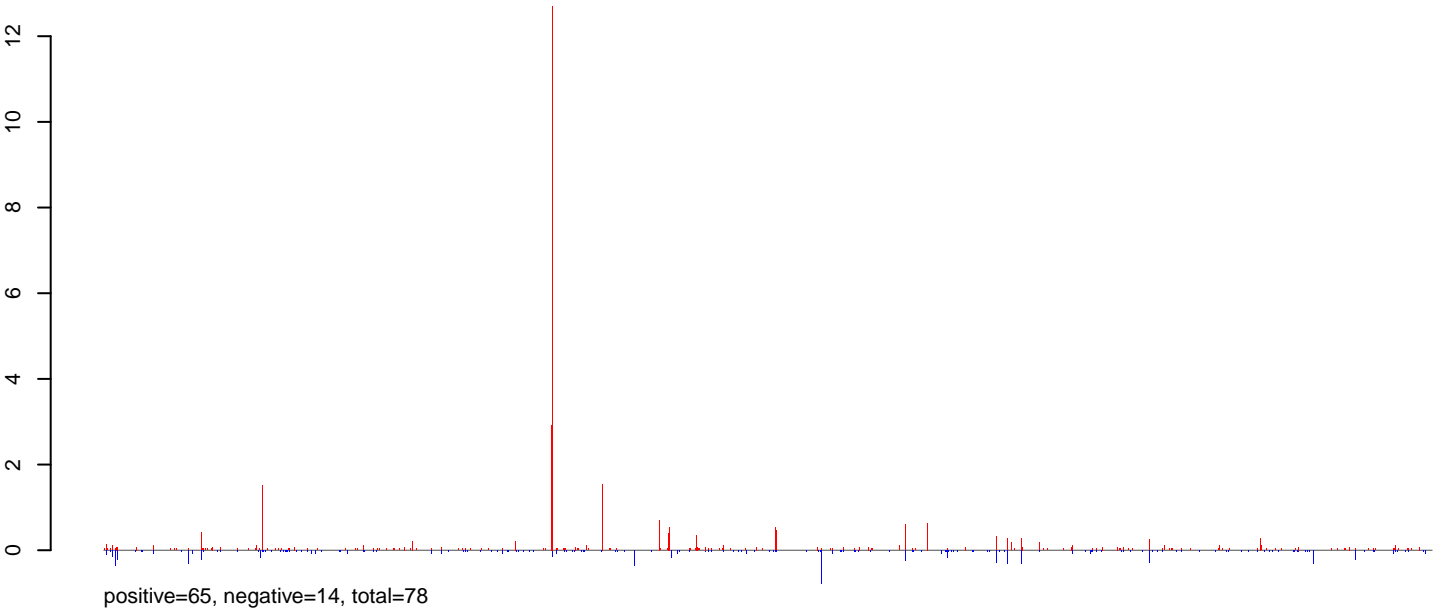
AeAlbo_Mcarc_OA.24_35.rep



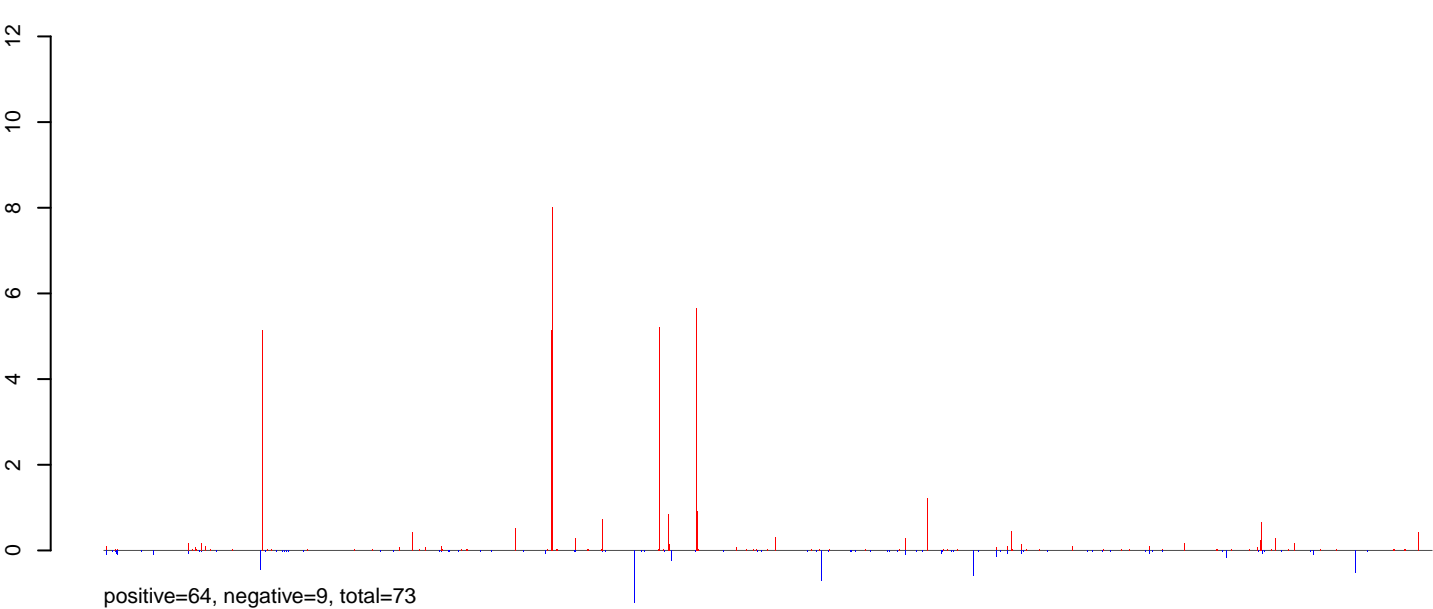
AeAlbo_Mcarc_OA.rep



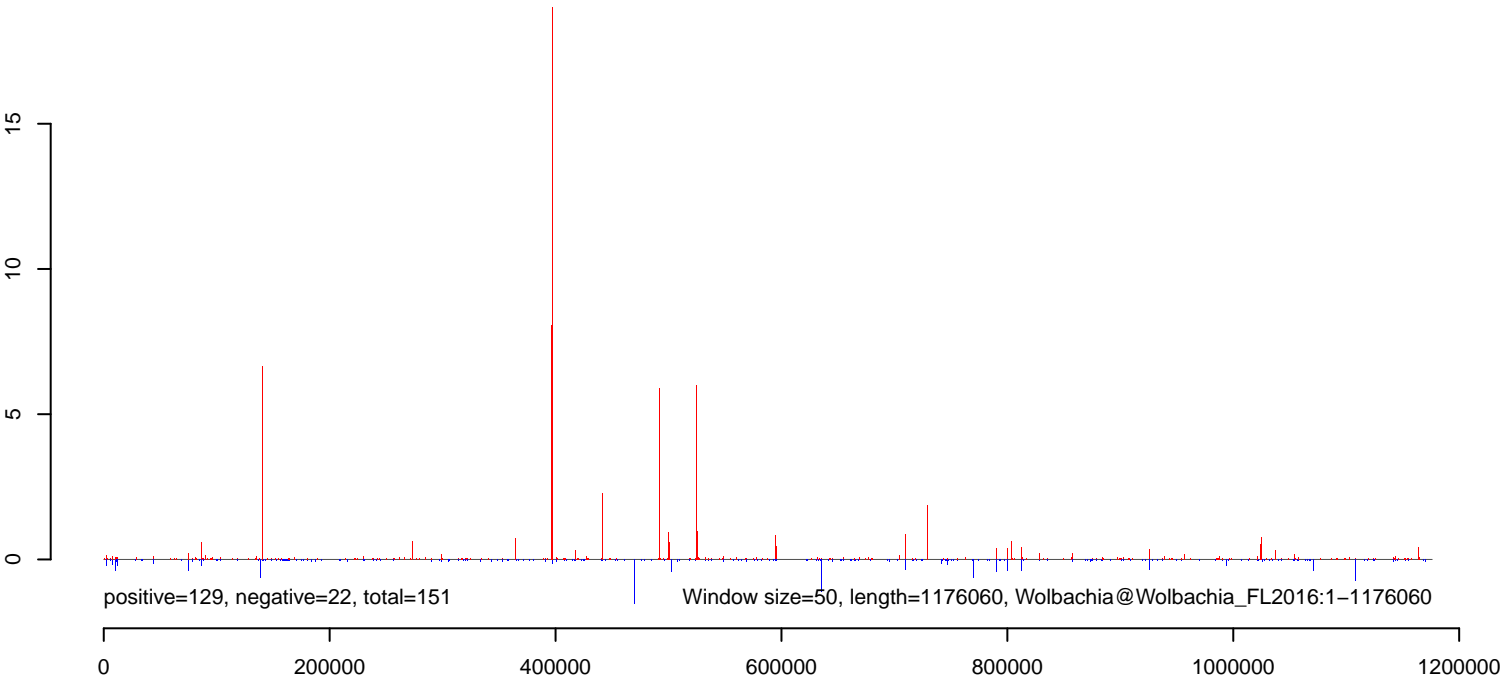
AeAlbo_Mcarc_OA.18_23.rep



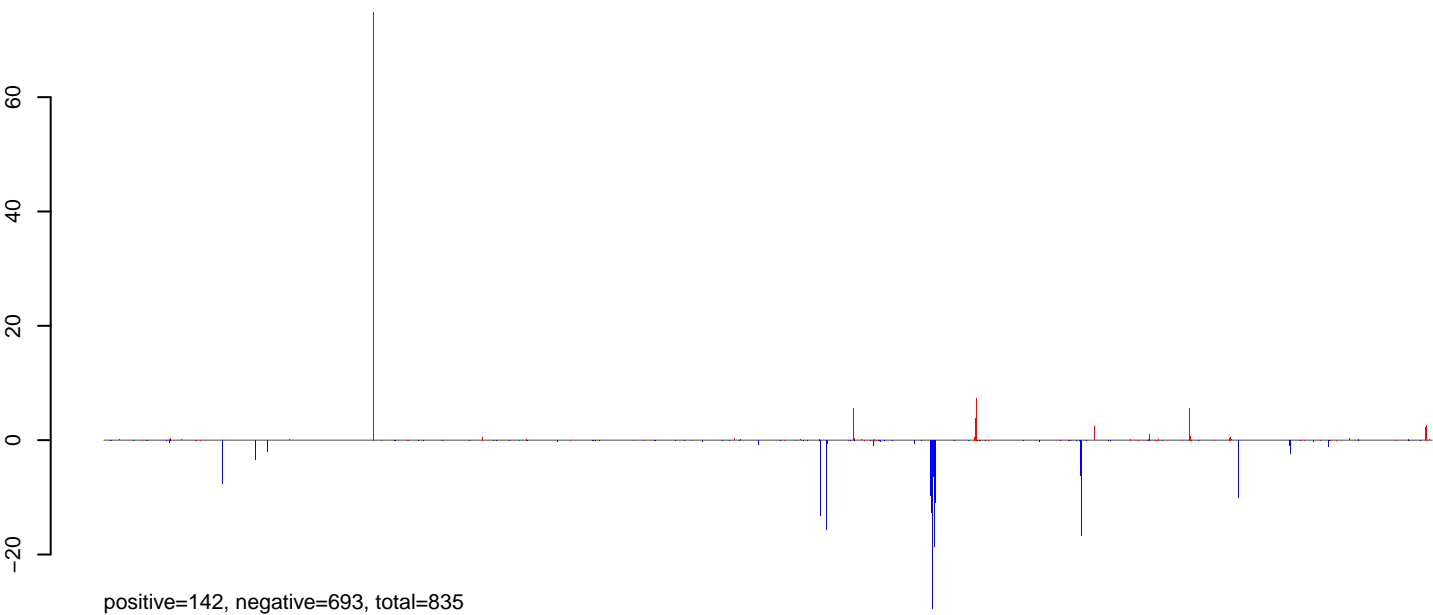
AeAlbo_Mcarc_OA.24_35.rep



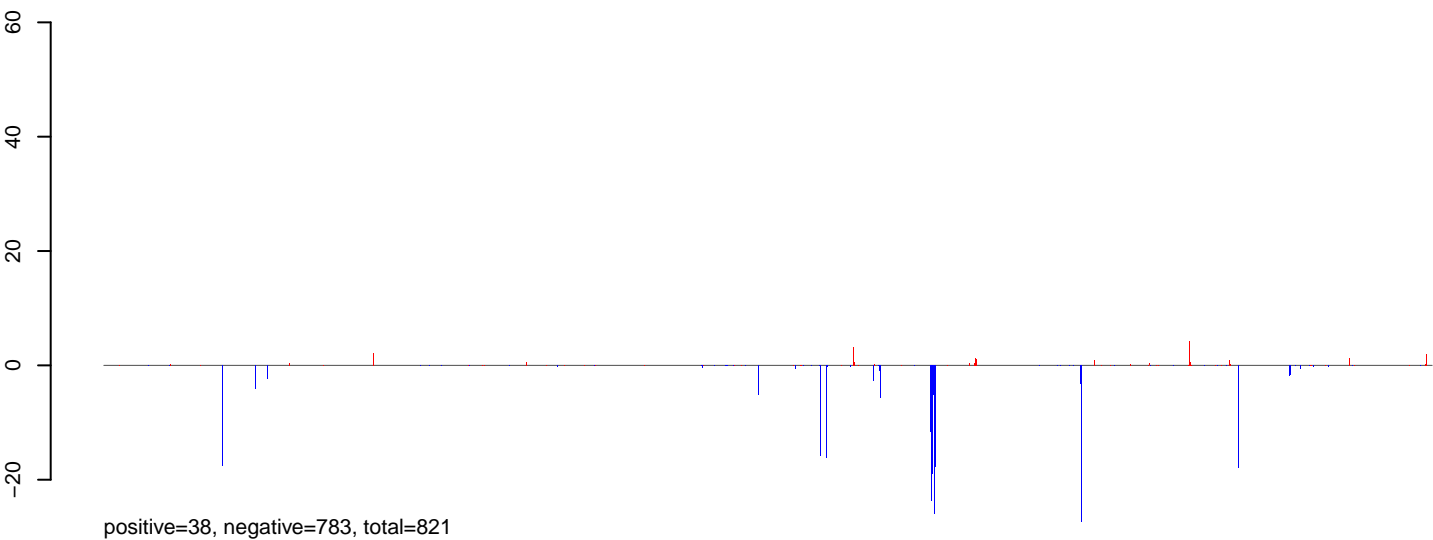
AeAlbo_Mcarc_OA.rep



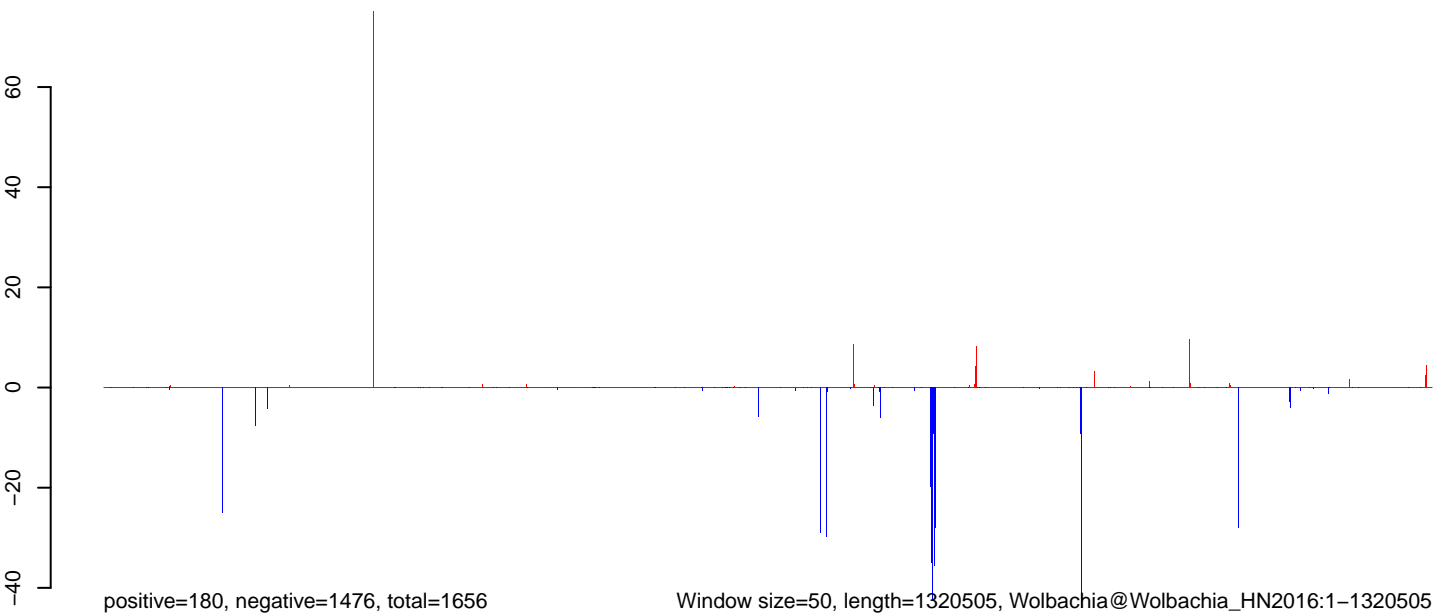
AeAlbo_Mcarc_OA.18_23.rep



AeAlbo_Mcarc_OA.24_35.rep

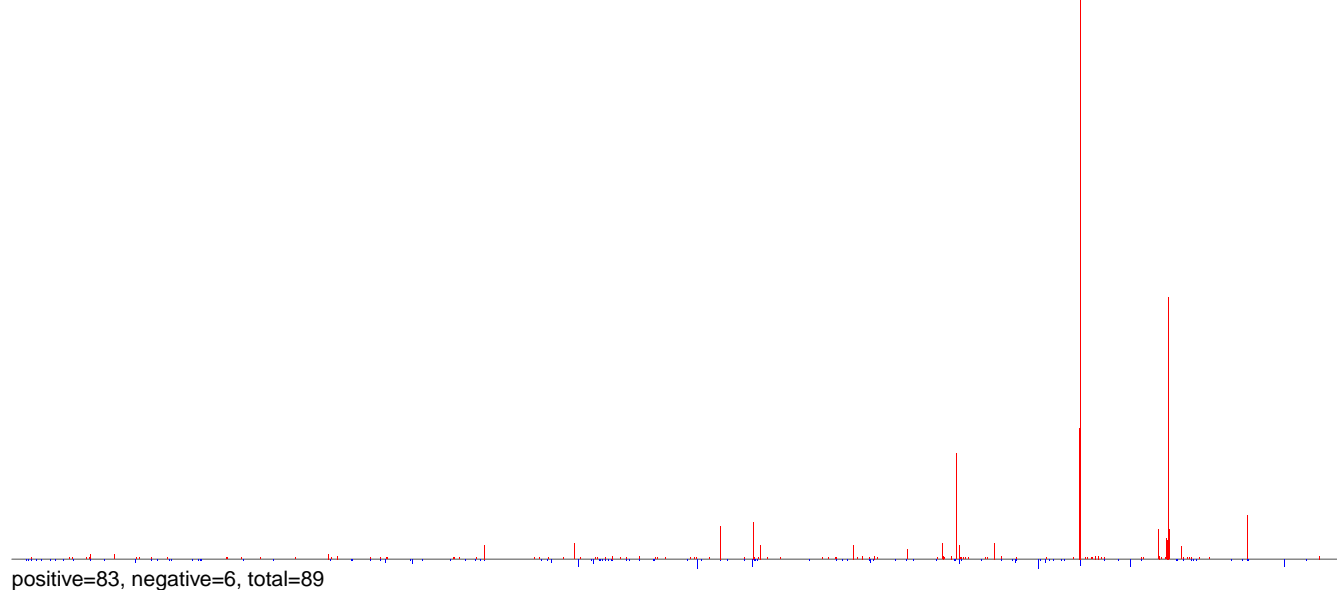


AeAlbo_Mcarc_OA.rep

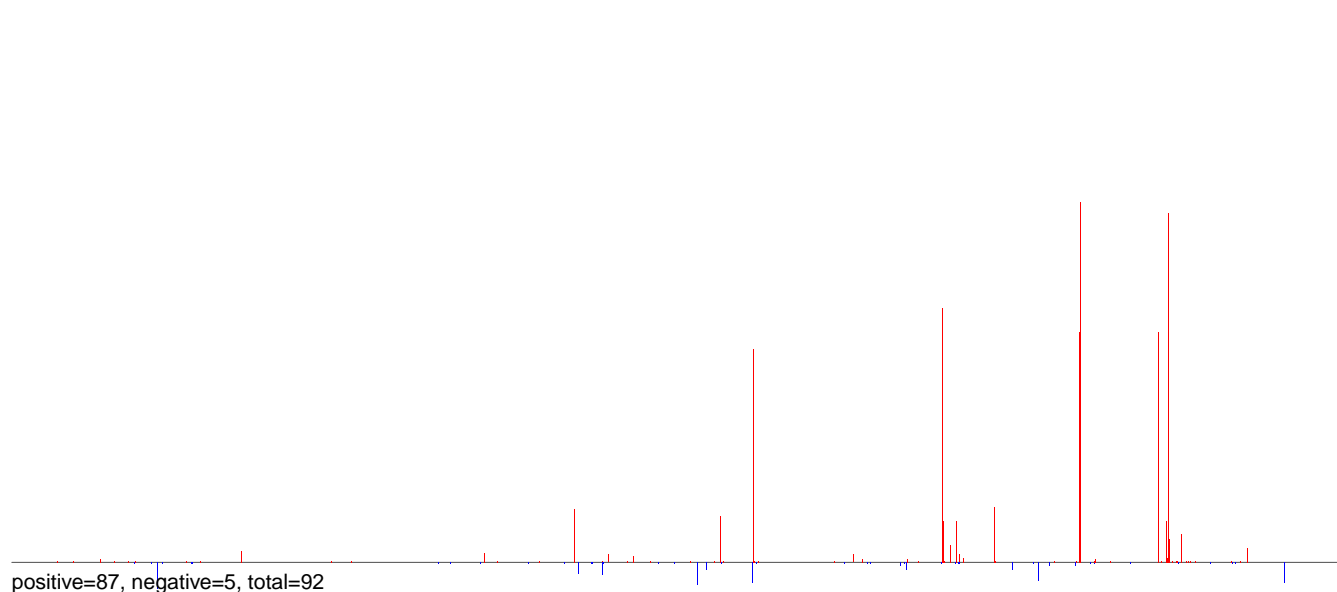


0 200000 400000 600000 800000 1000000 1200000

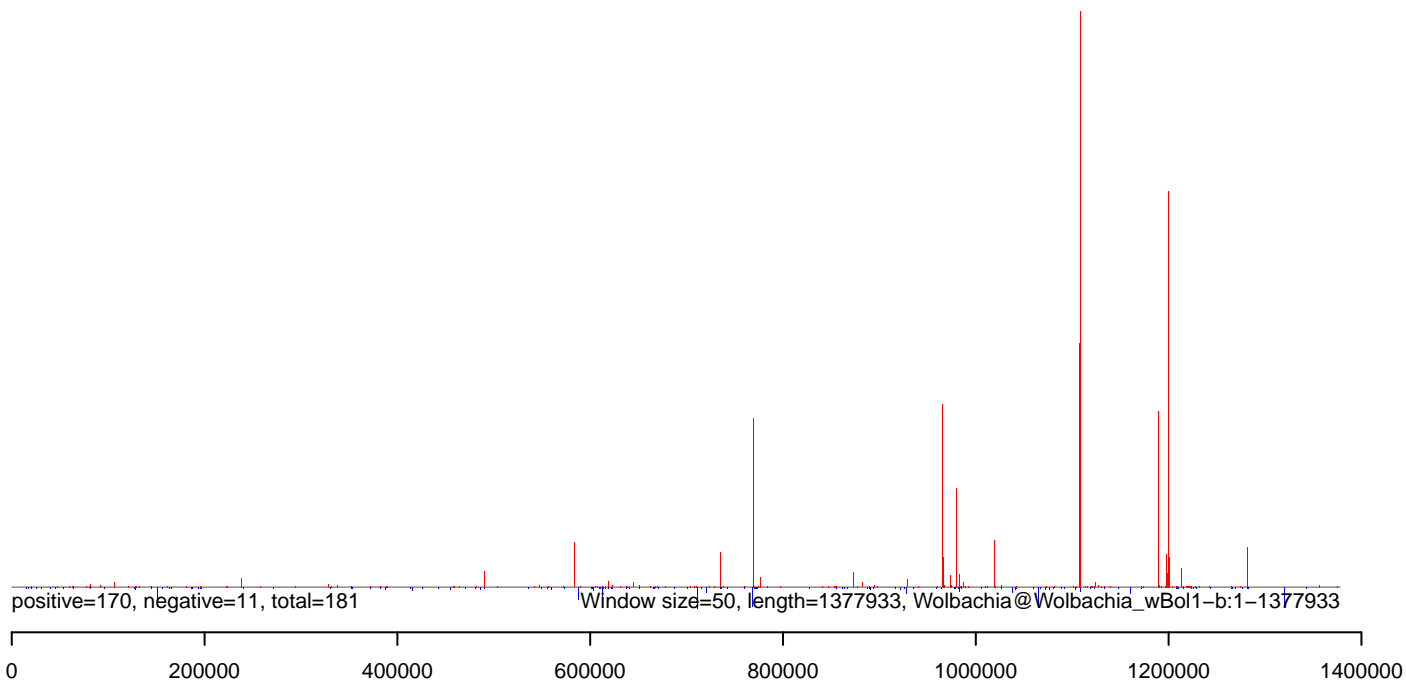
AeAlbo_Mcarc_OA.18_23.rep



AeAlbo_Mcarc_OA.24_35.rep



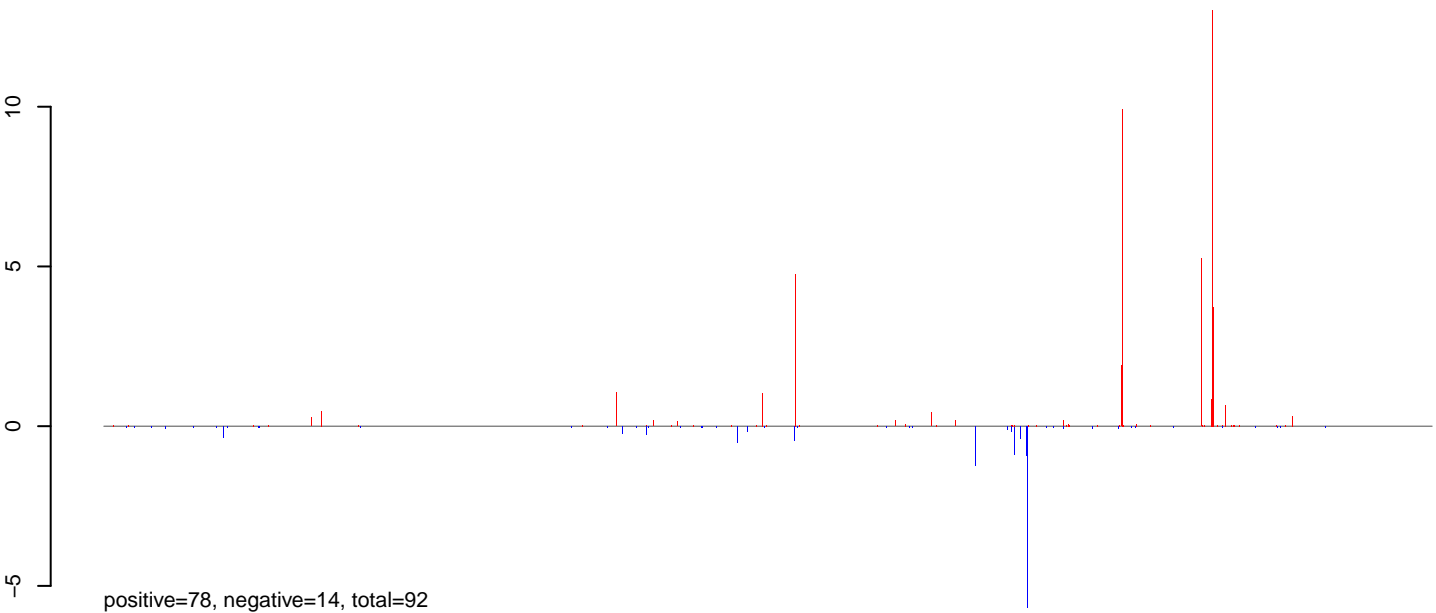
AeAlbo_Mcarc_OA.rep



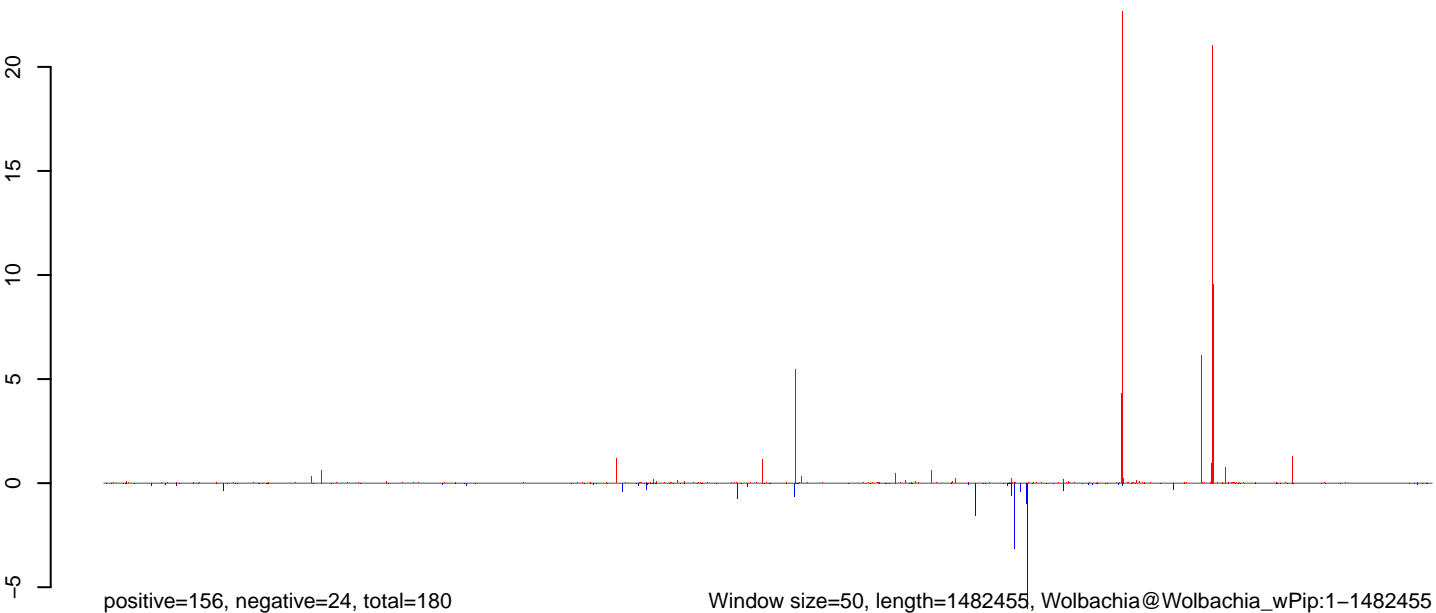
AeAlbo_Mcarc_OA.18_23.rep



AeAlbo_Mcarc_OA.24_35.rep



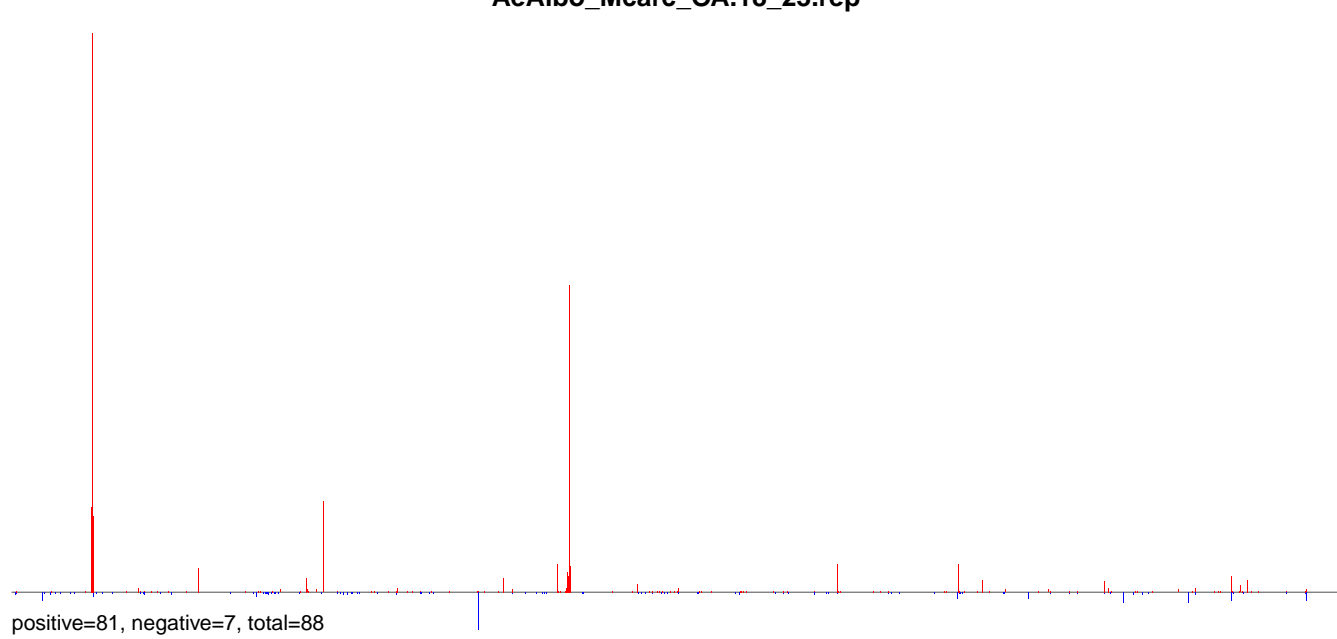
AeAlbo_Mcarc_OA.rep



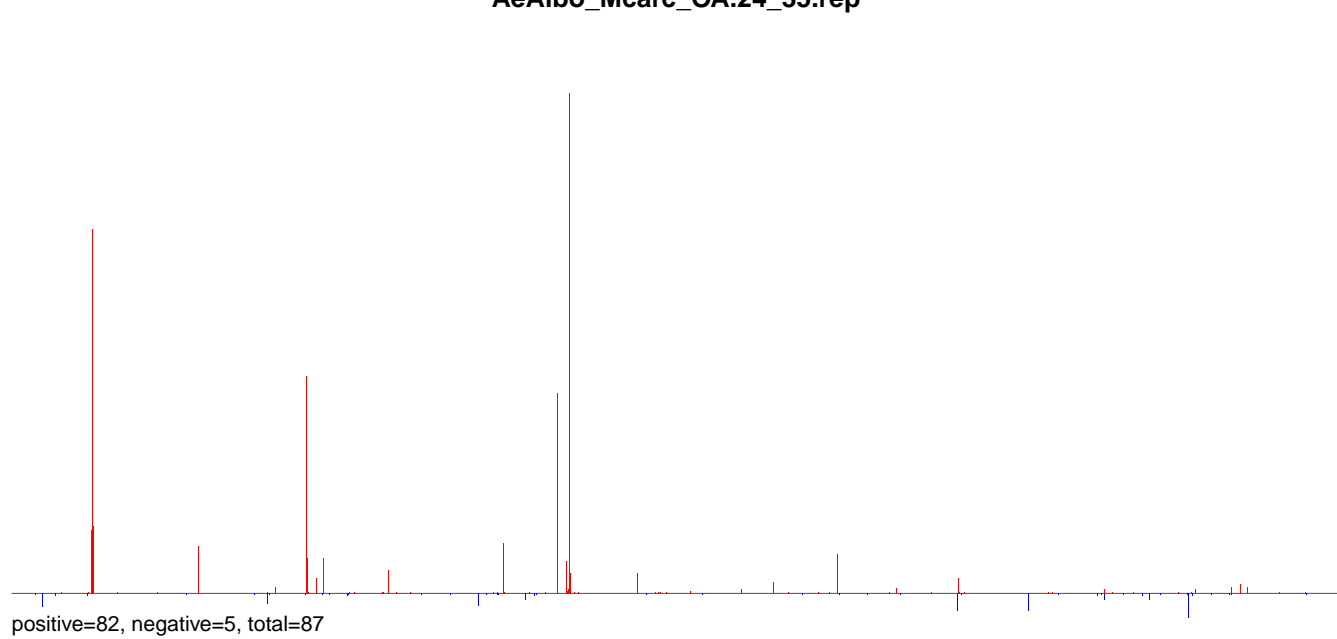
Window size=50, length=1482455, Wolbachia@Wolbachia_wPip:1-1482455

0 500000 1000000 1500000

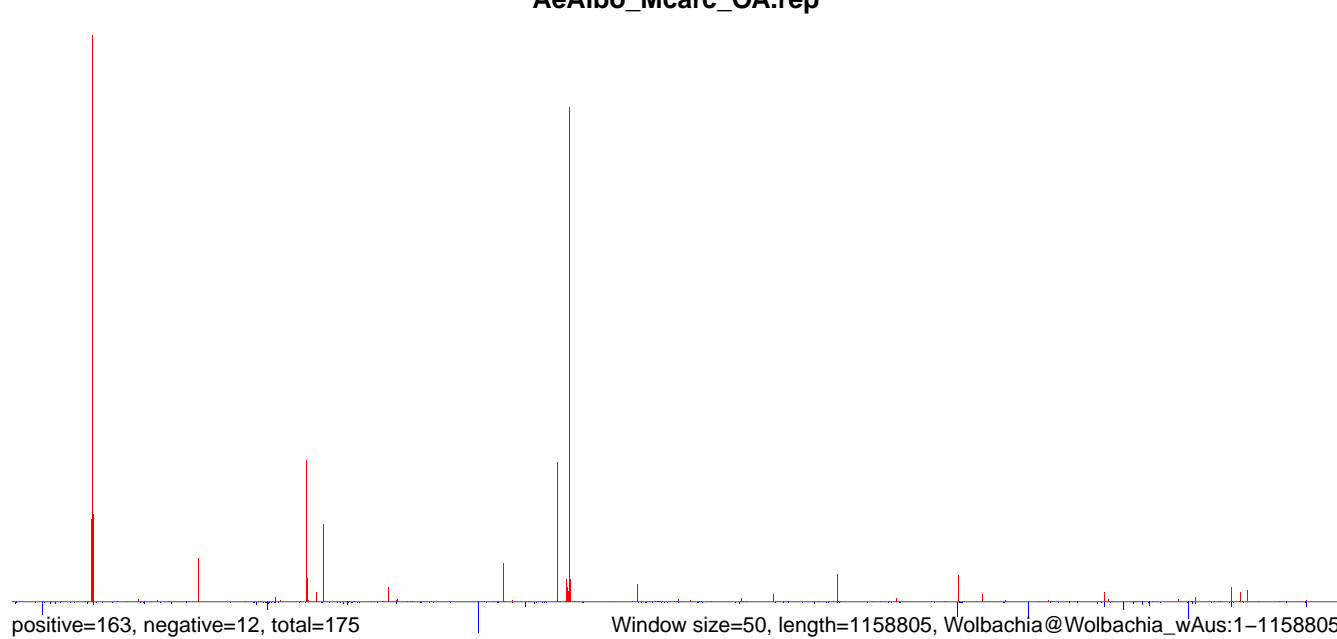
AeAlbo_Mcarc_OA.18_23.rep



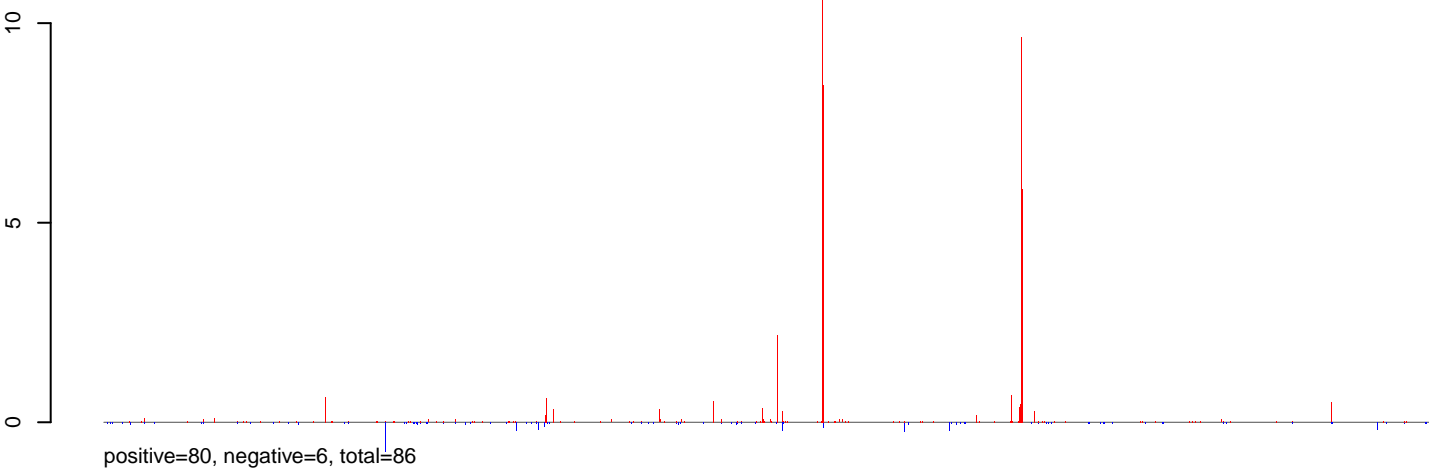
AeAlbo_Mcarc_OA.24_35.rep



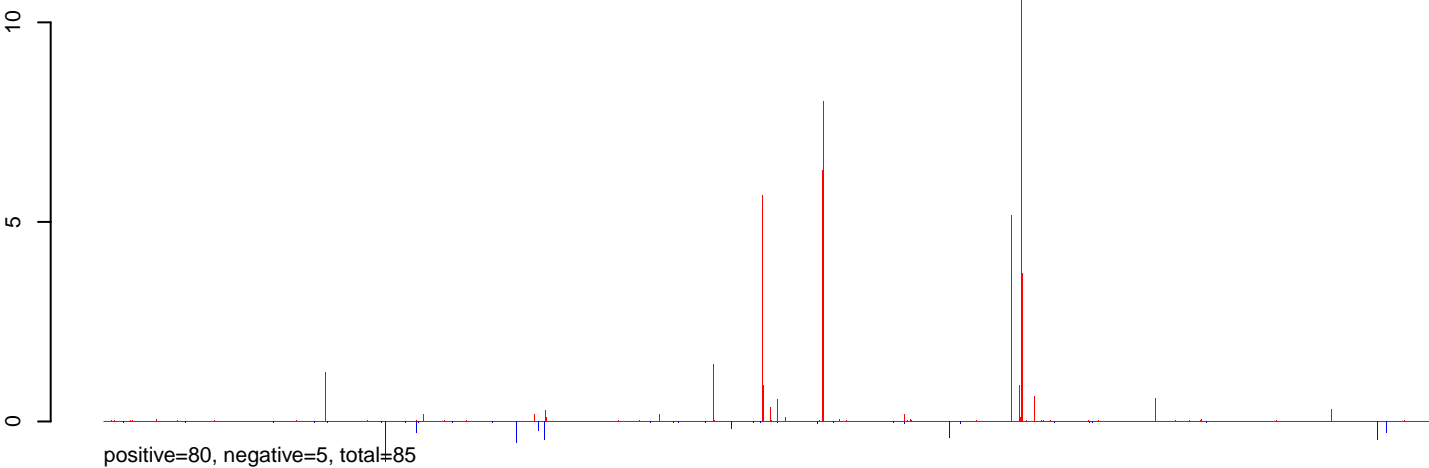
AeAlbo_Mcarc_OA.rep



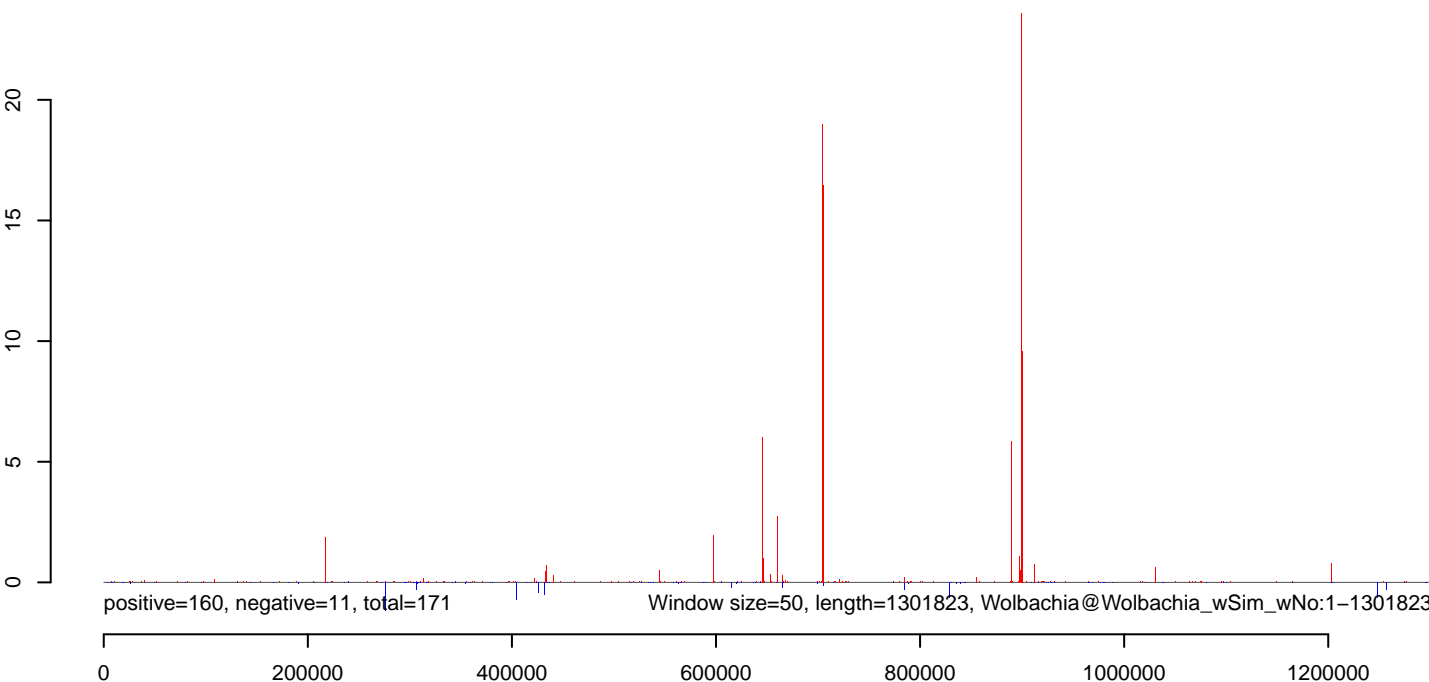
AeAlbo_Mcarc_OA.18_23.rep



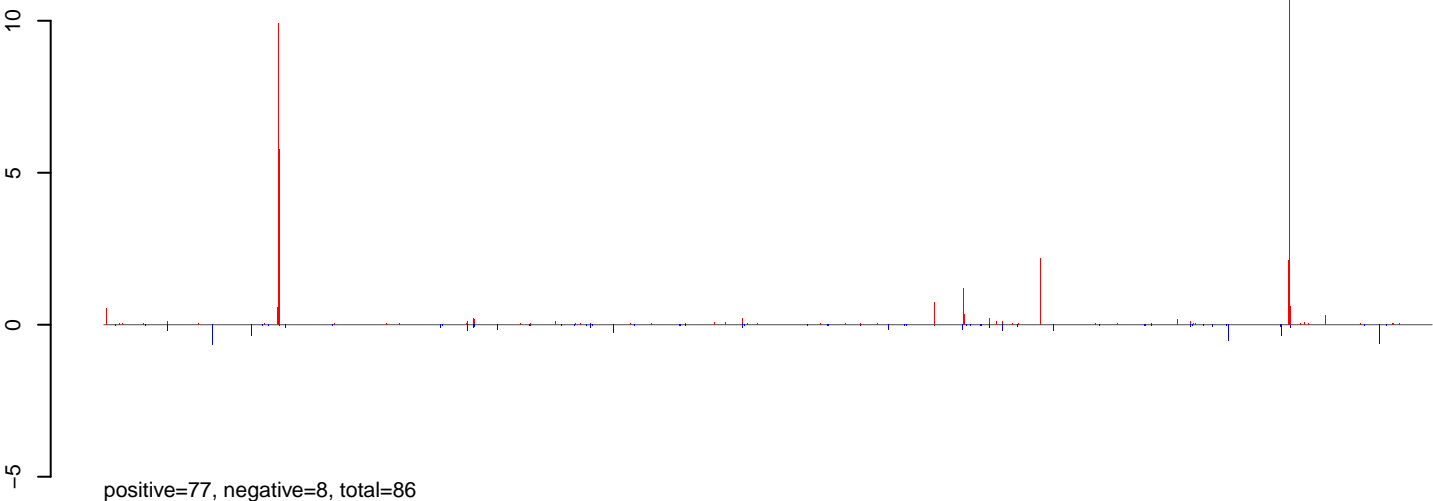
AeAlbo_Mcarc_OA.24_35.rep



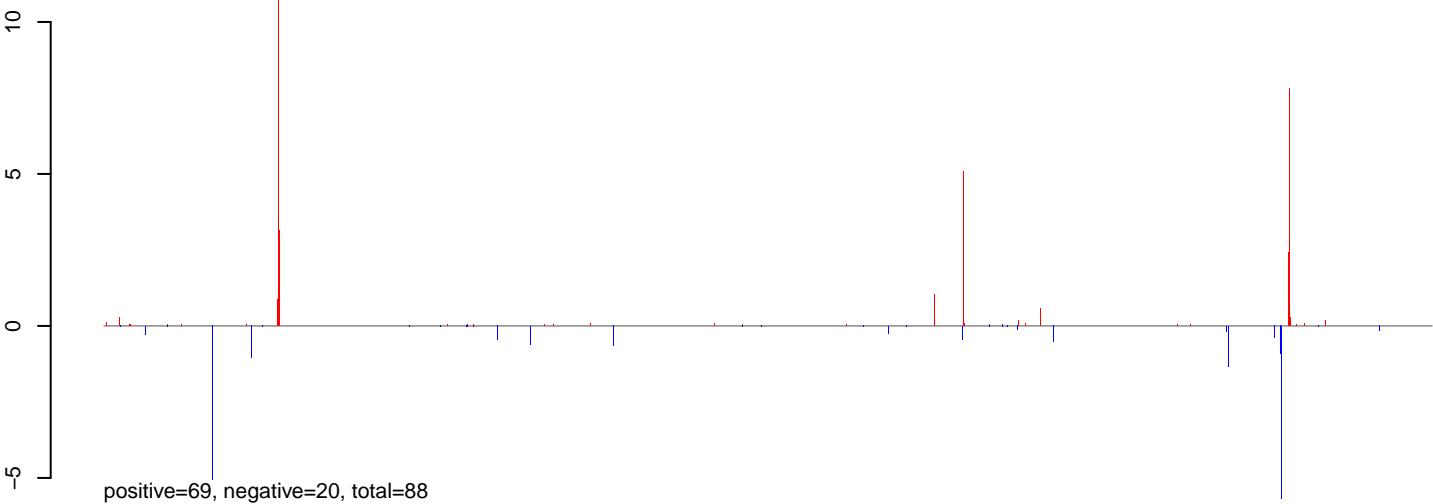
AeAlbo_Mcarc_OA.rep



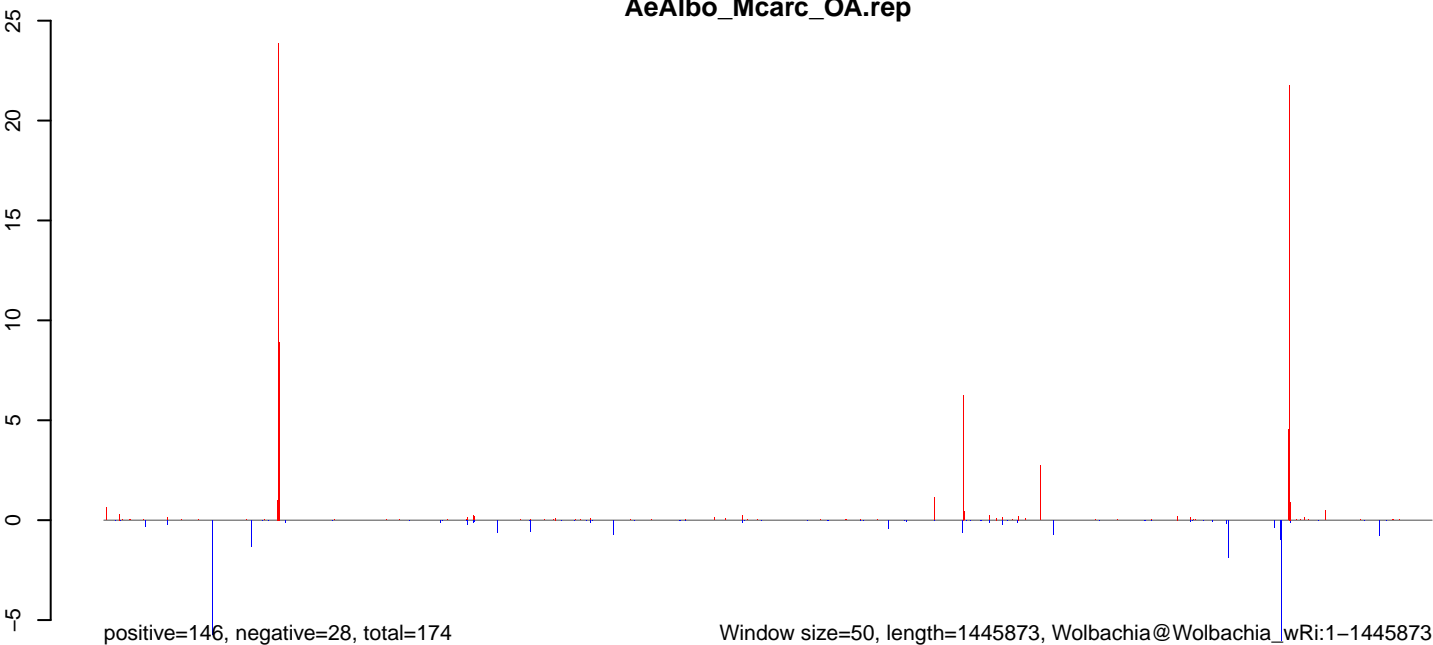
AeAlbo_Mcarc_OA.18_23.rep



AeAlbo_Mcarc_OA.24_35.rep

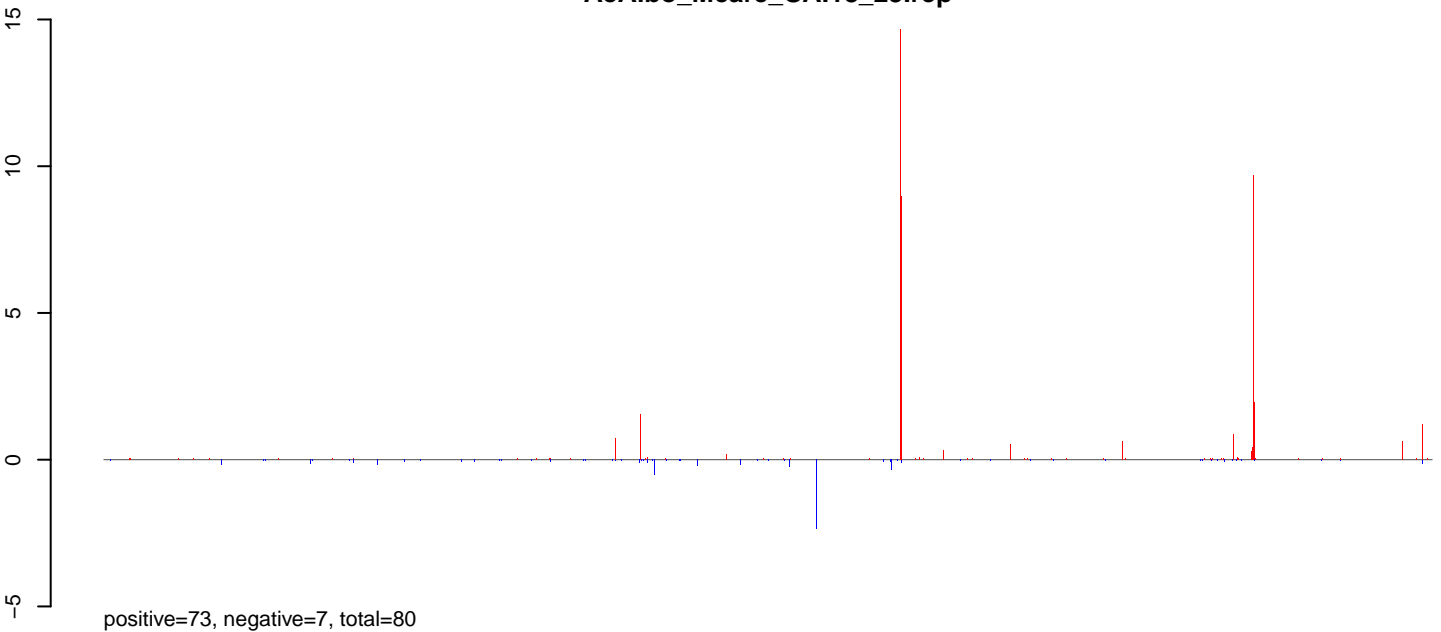


AeAlbo_Mcarc_OA.rep

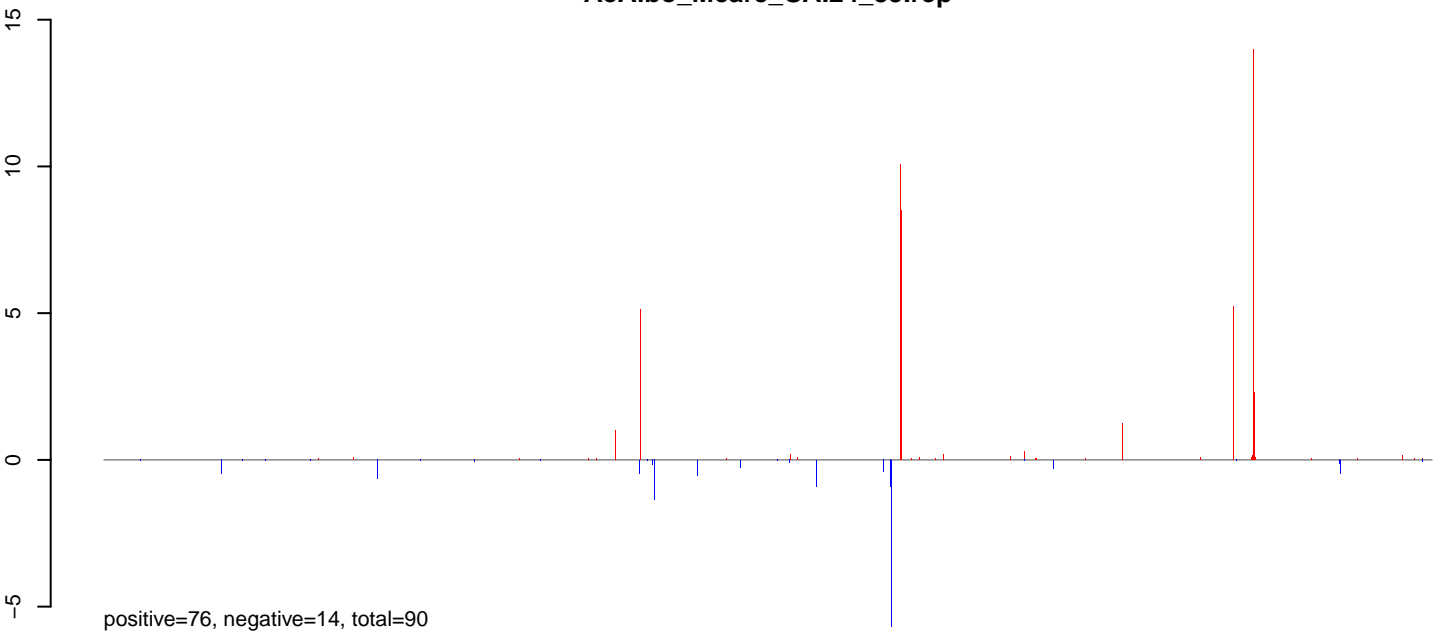


0 500000 1000000 1500000

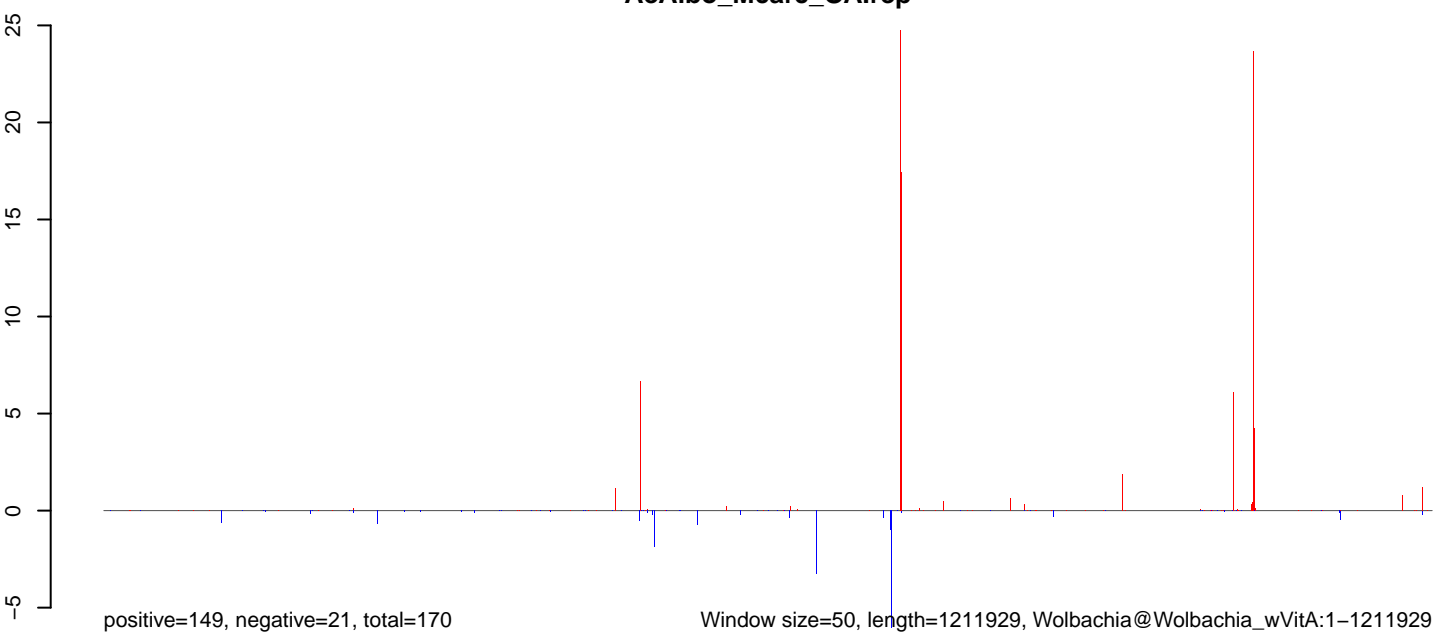
AeAlbo_Mcarc_OA.18_23.rep



AeAlbo_Mcarc_OA.24_35.rep

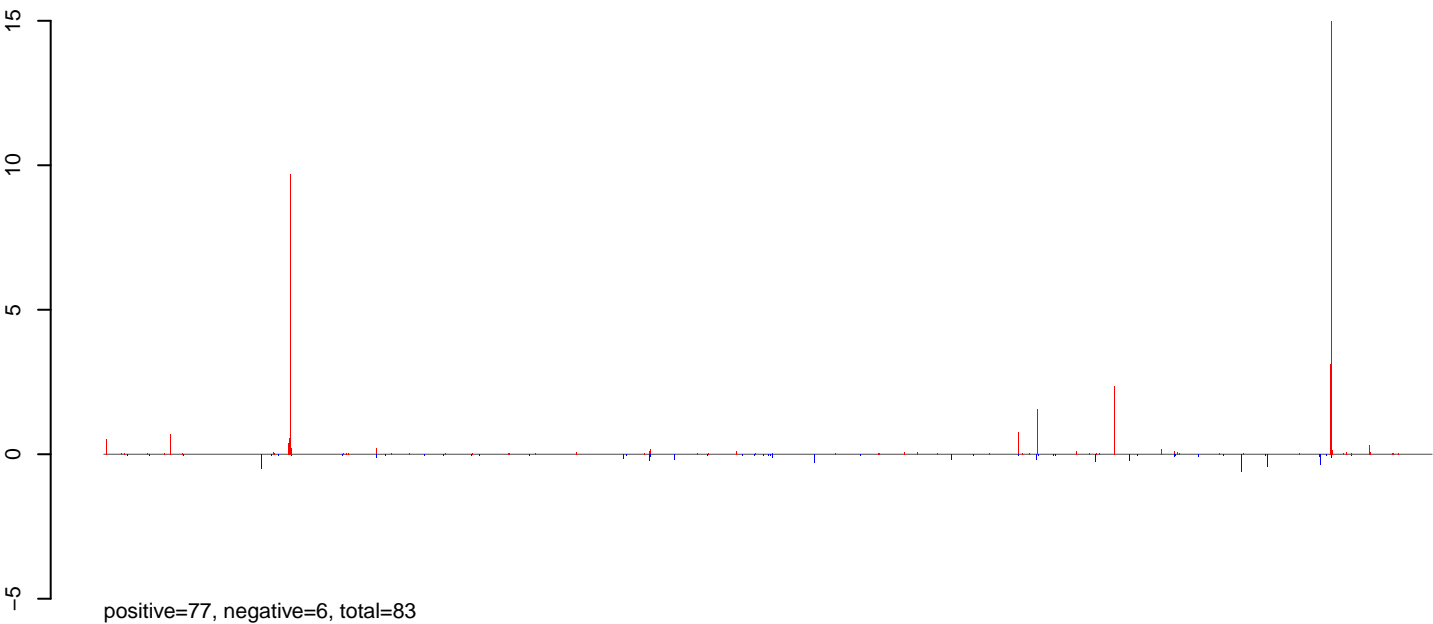


AeAlbo_Mcarc_OA.rep

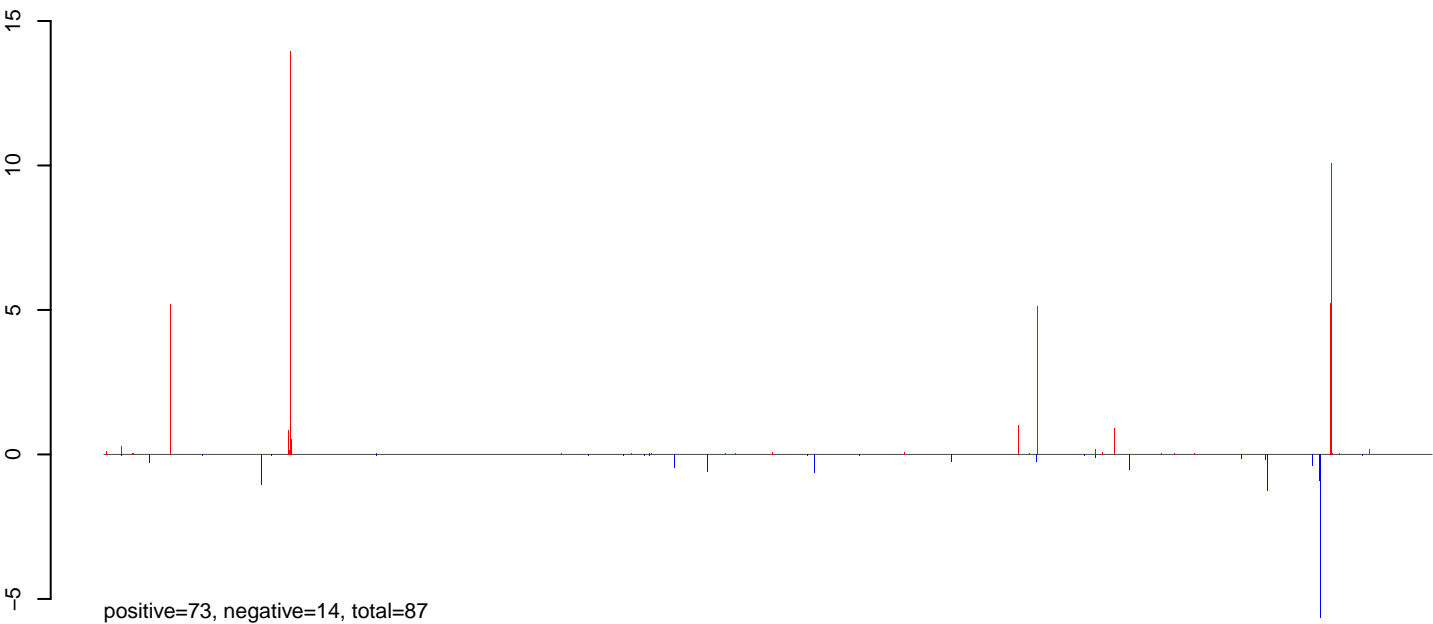


0 200000 400000 600000 800000 1000000 1200000

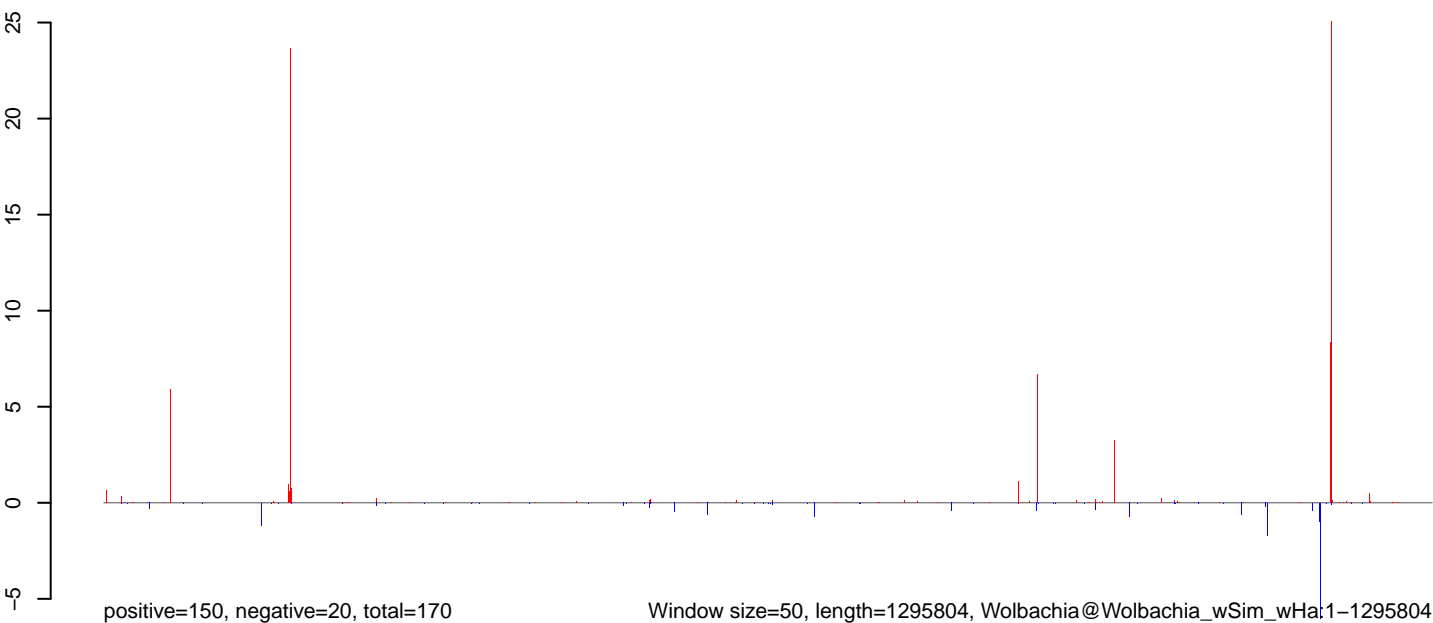
AeAlbo_Mcarc_OA.18_23.rep



AeAlbo_Mcarc_OA.24_35.rep



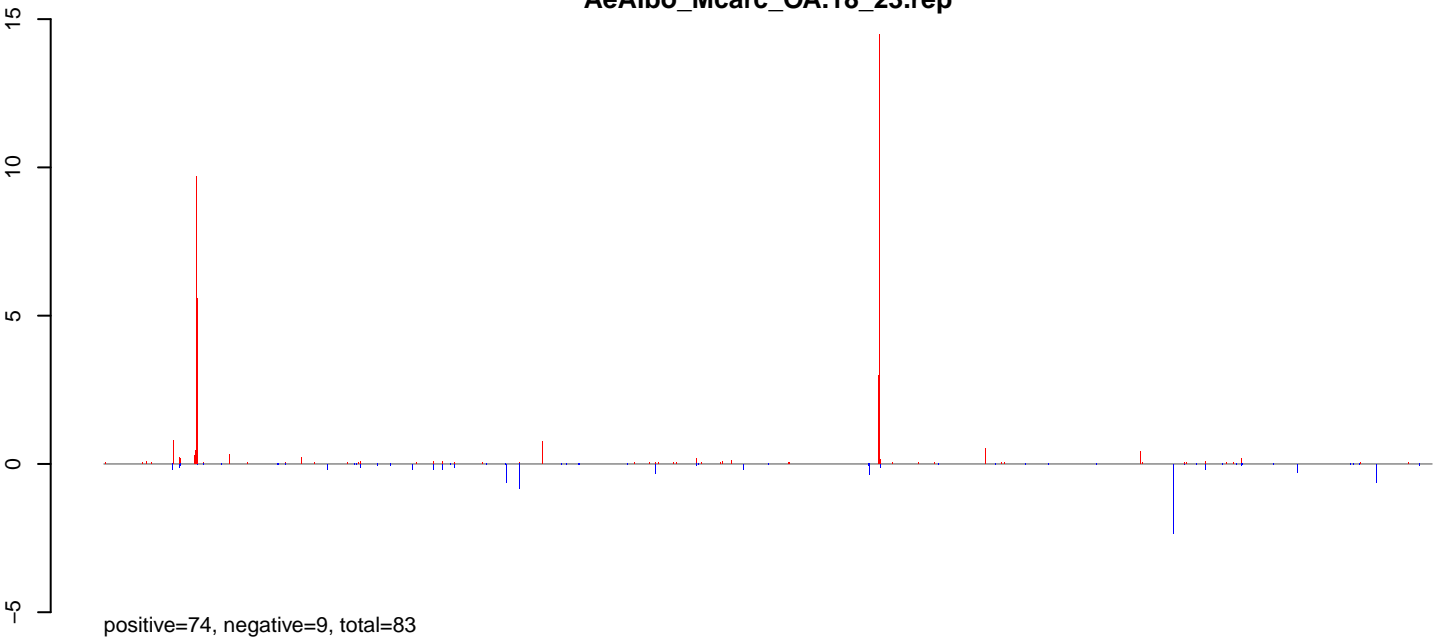
AeAlbo_Mcarc_OA.rep



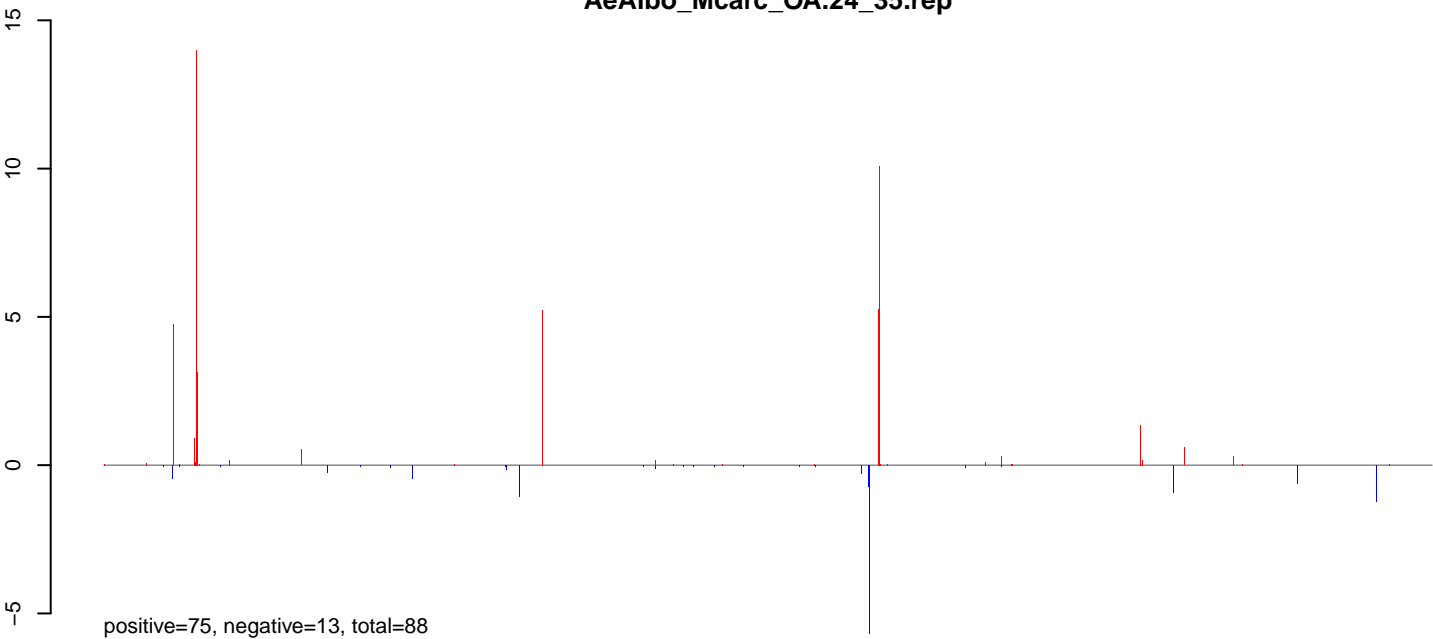
Window size=50, length=1295804, Wolbachia@Wolbachia_wSim_wHa:1-1295804

0 200000 400000 600000 800000 1000000 1200000

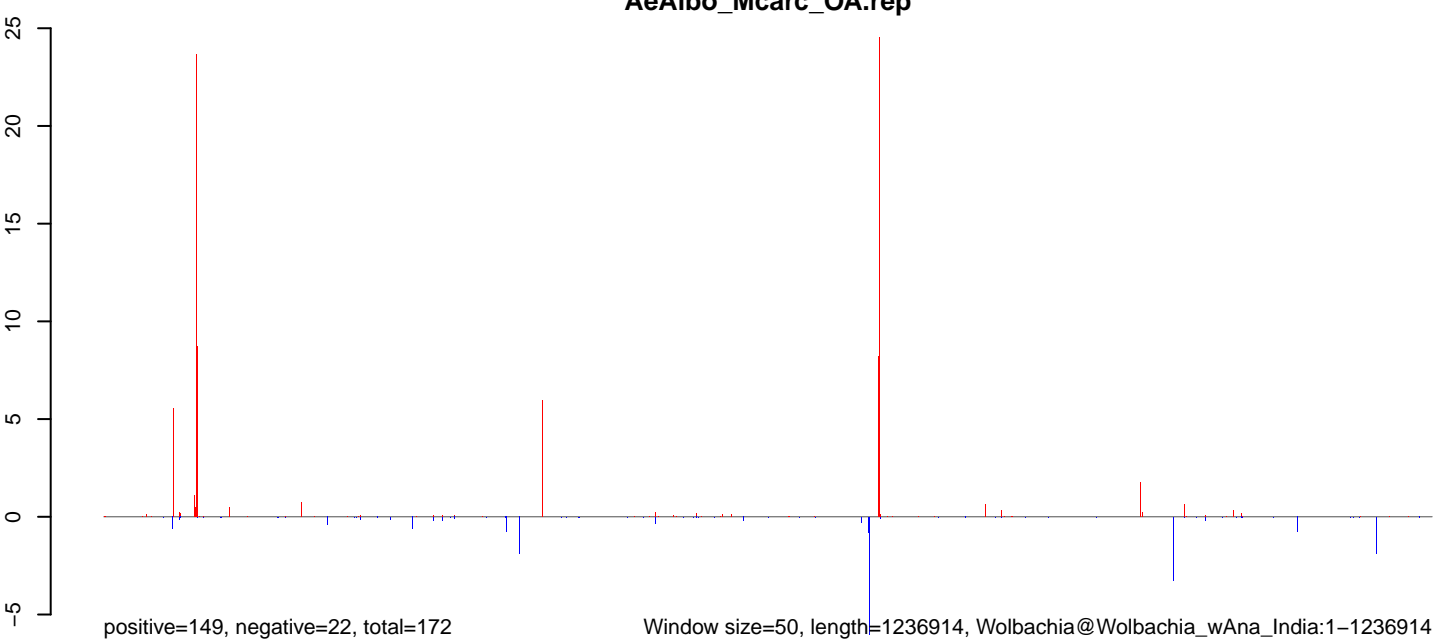
AeAlbo_Mcarc_OA.18_23.rep



AeAlbo_Mcarc_OA.24_35.rep



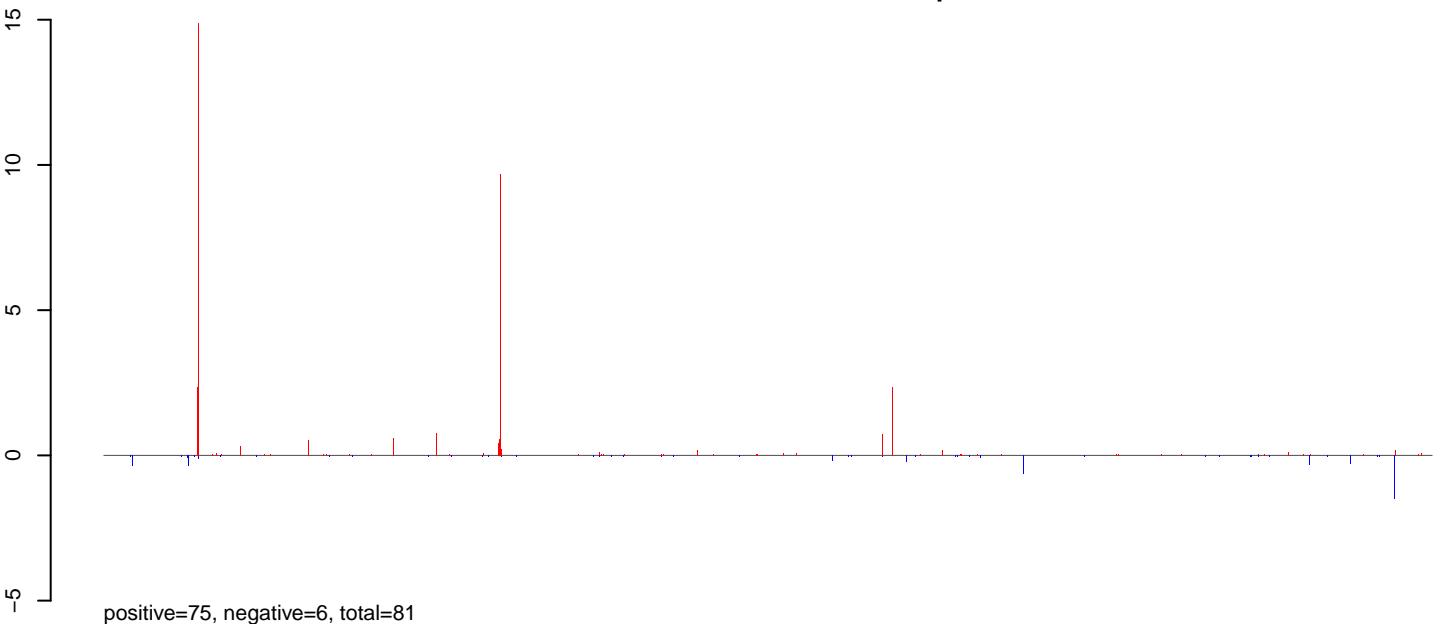
AeAlbo_Mcarc_OA.rep



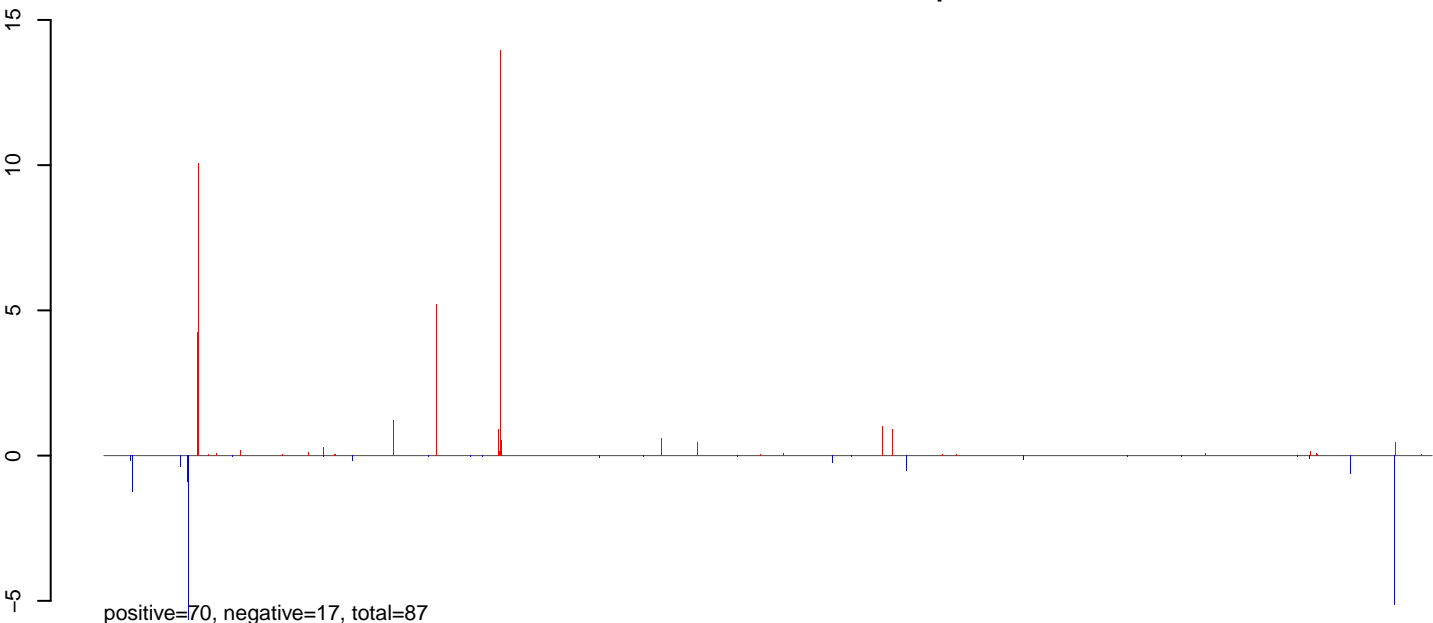
Window size=50, length=1236914, Wolbachia@Wolbachia_wAna_India:1-1236914

0 200000 400000 600000 800000 1000000 1200000

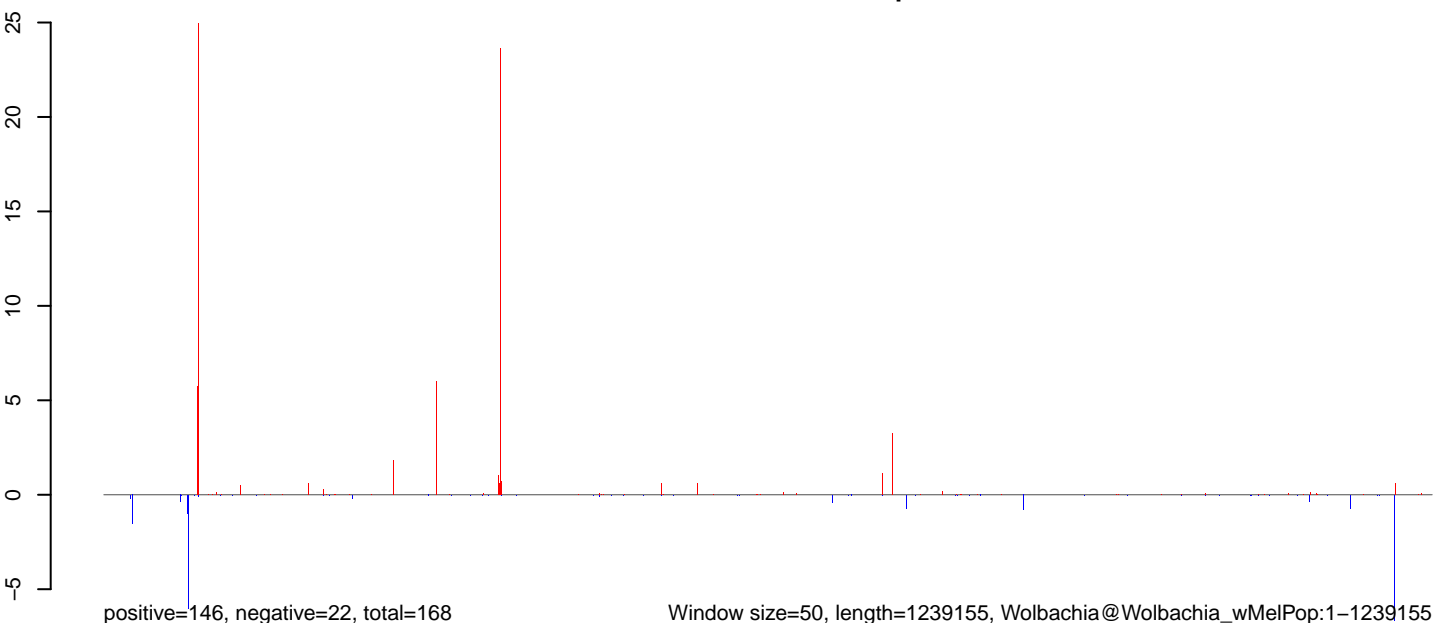
AeAlbo_Mcarc_OA.18_23.rep



AeAlbo_Mcarc_OA.24_35.rep



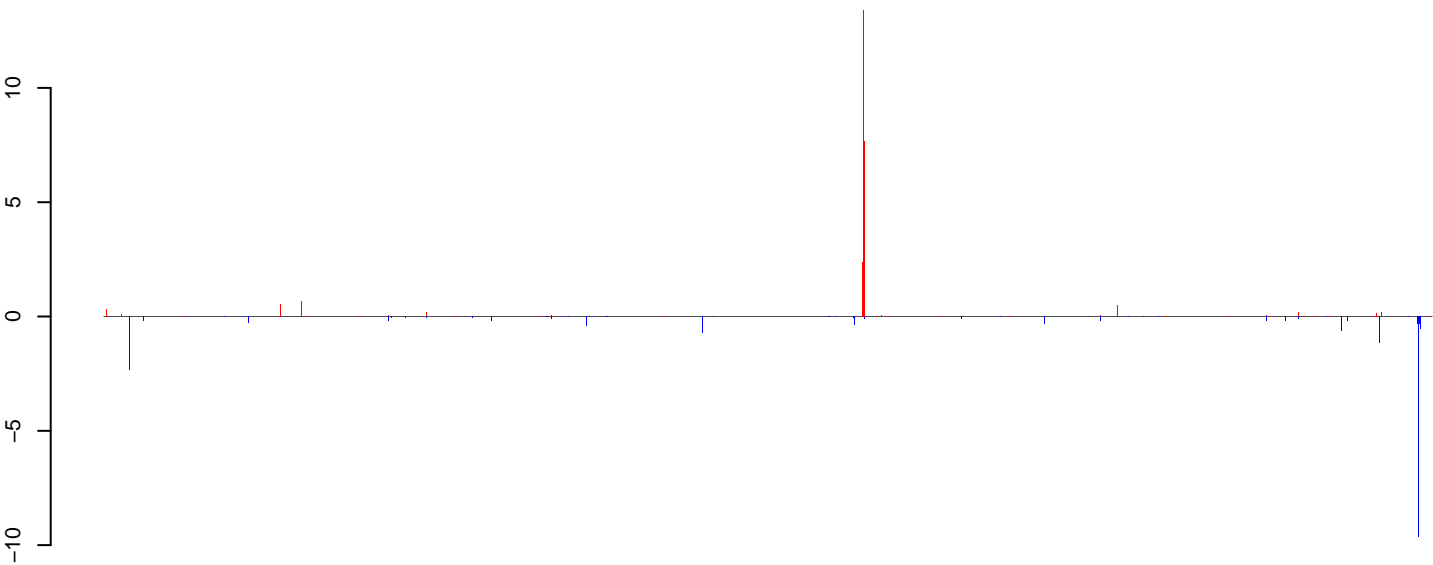
AeAlbo_Mcarc_OA.rep



Window size=50, length=1239155, Wolbachia@Wolbachia_wMelPop:1-1239155

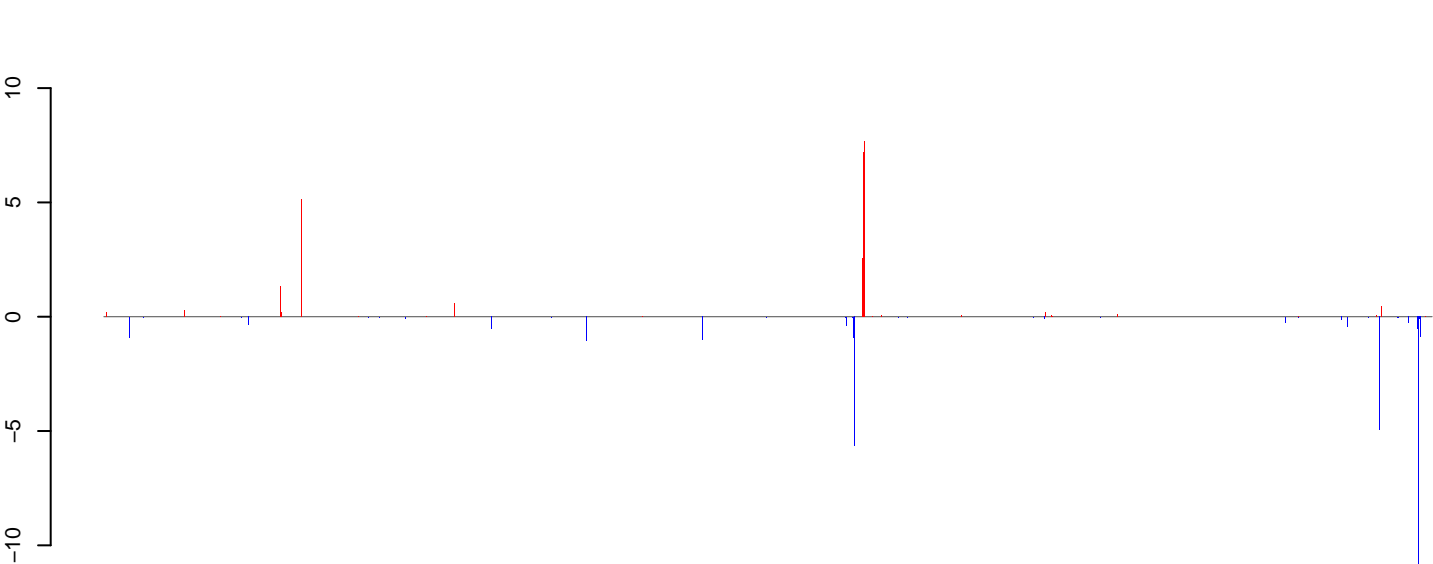
0 200000 400000 600000 800000 1000000 1200000

AeAlbo_Mcarc_OA.18_23.rep



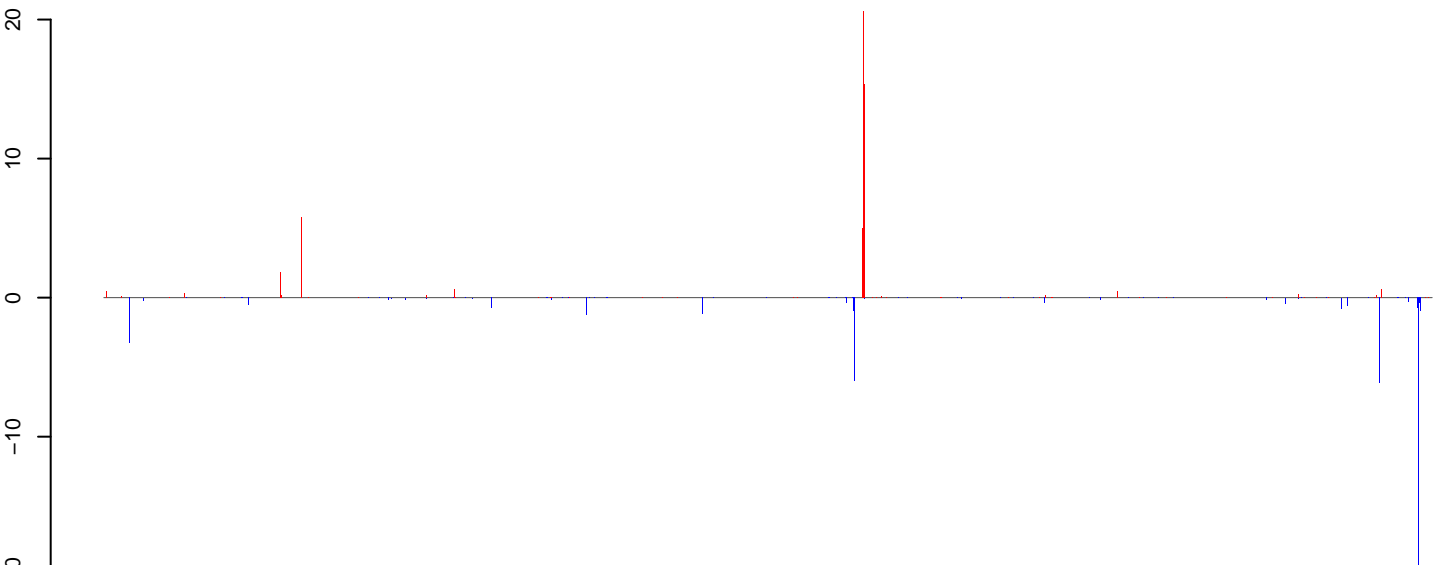
positive=49, negative=34, total=83

AeAlbo_Mcarc_OA.24_35.rep



positive=46, negative=42, total=88

AeAlbo_Mcarc_OA.rep

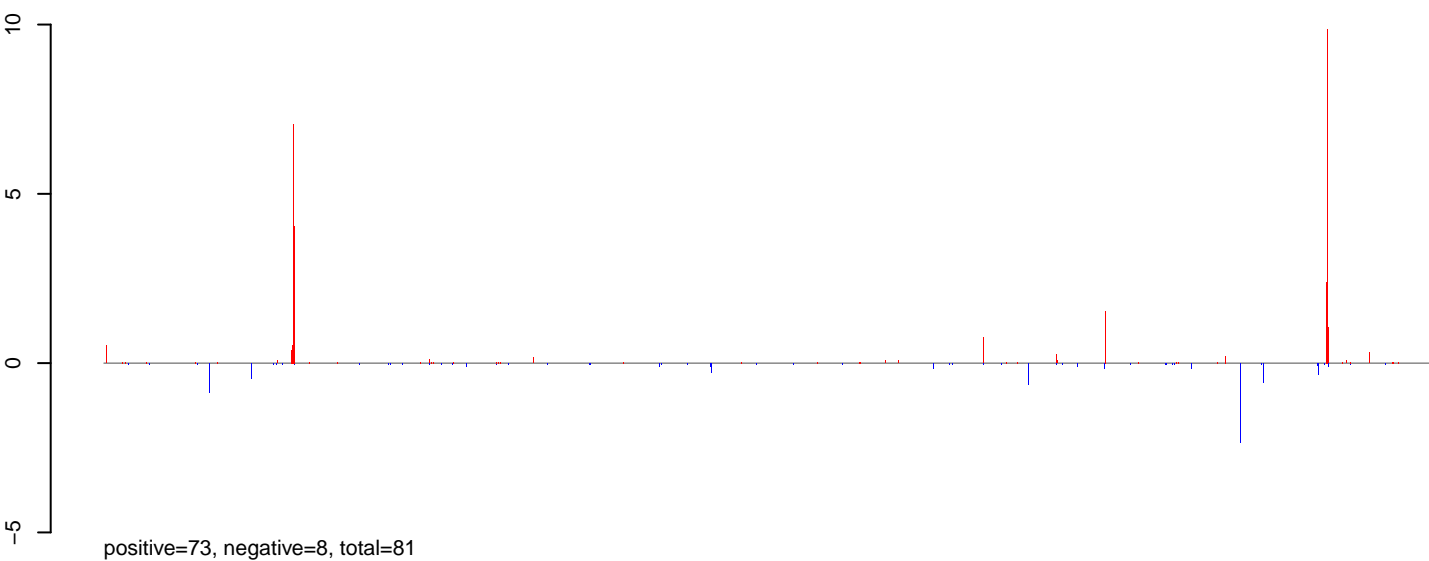


positive=95, negative=76, total=171

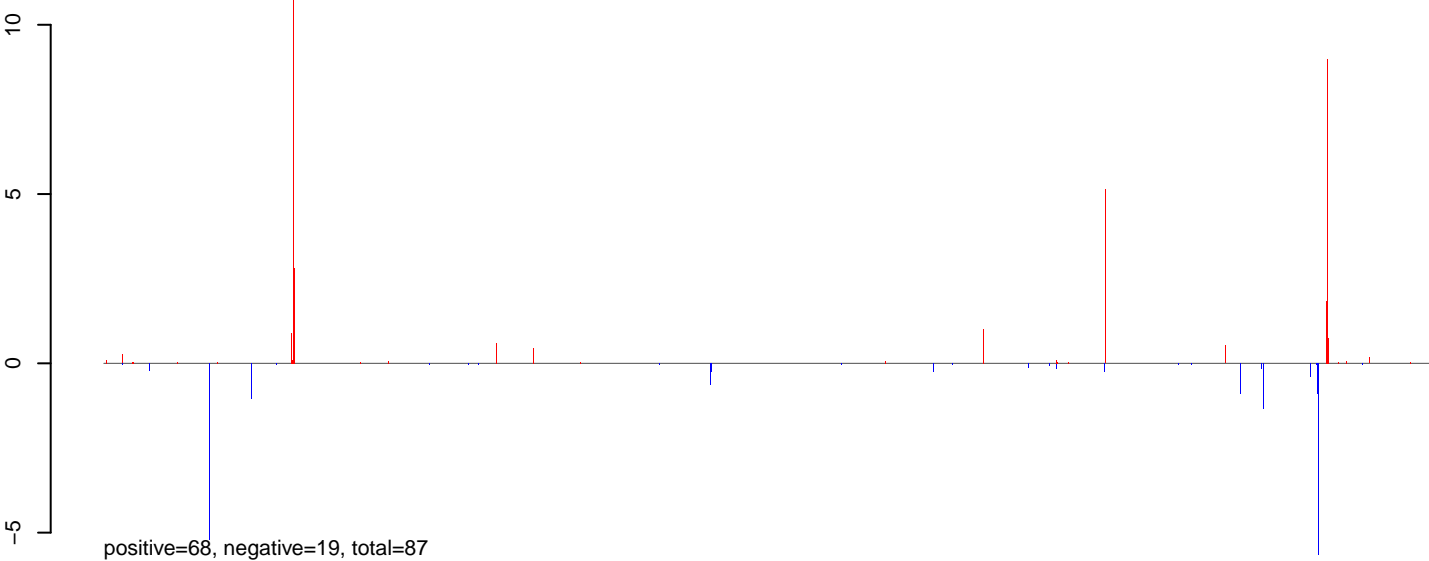
Window size=50, length=1223568, Wolbachia@Wolbachia_wAna_Indonesia:1-1223568

0 200000 400000 600000 800000 1000000 1200000

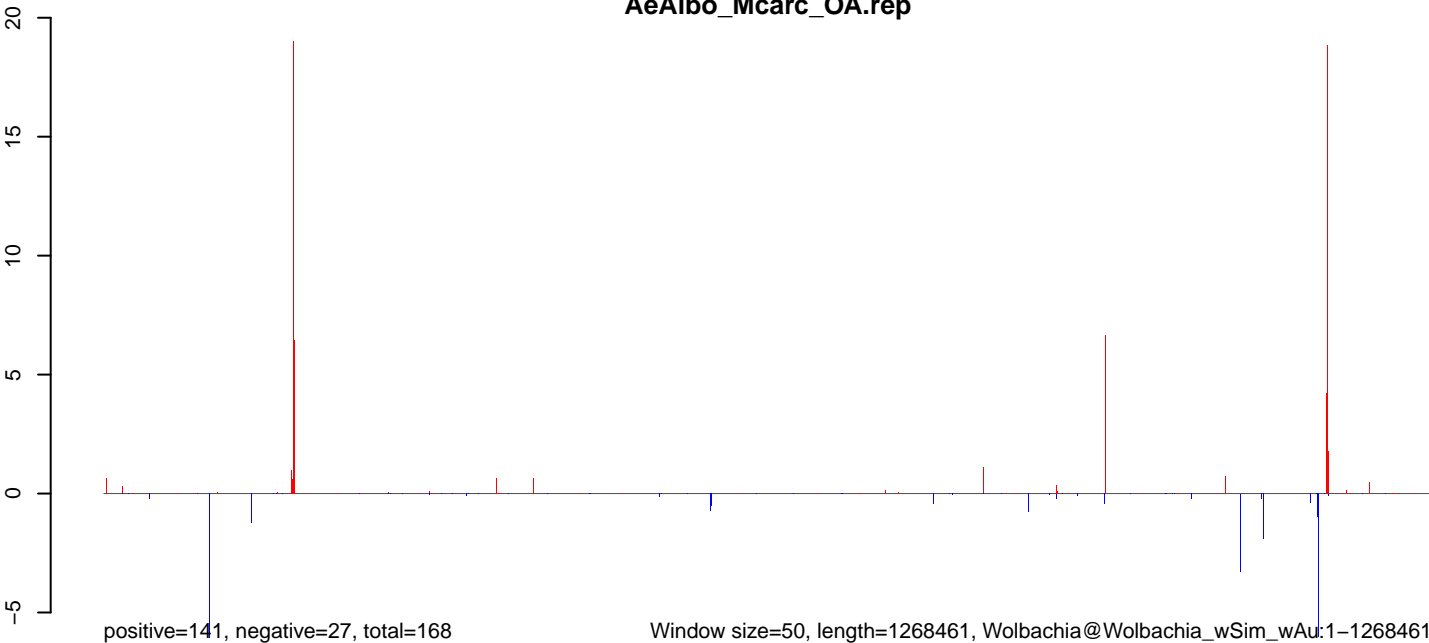
AeAlbo_Mcarc_OA.18_23.rep



AeAlbo_Mcarc_OA.24_35.rep

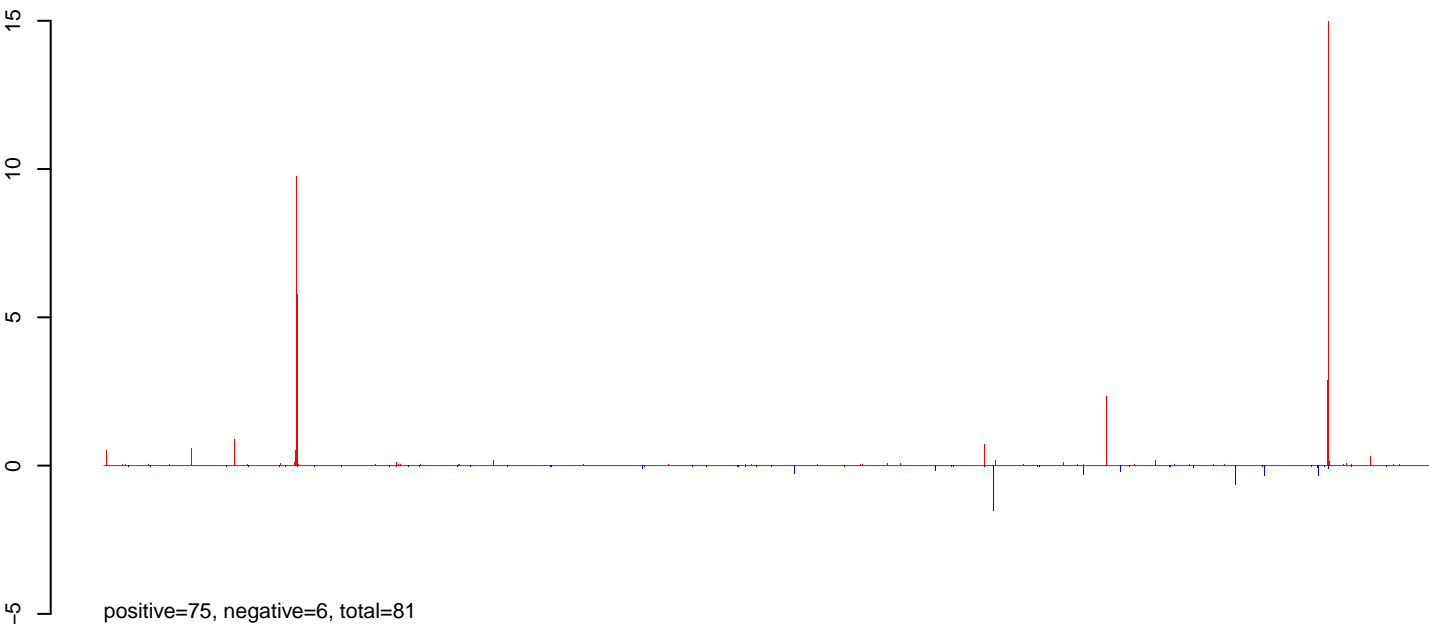


AeAlbo_Mcarc_OA.rep

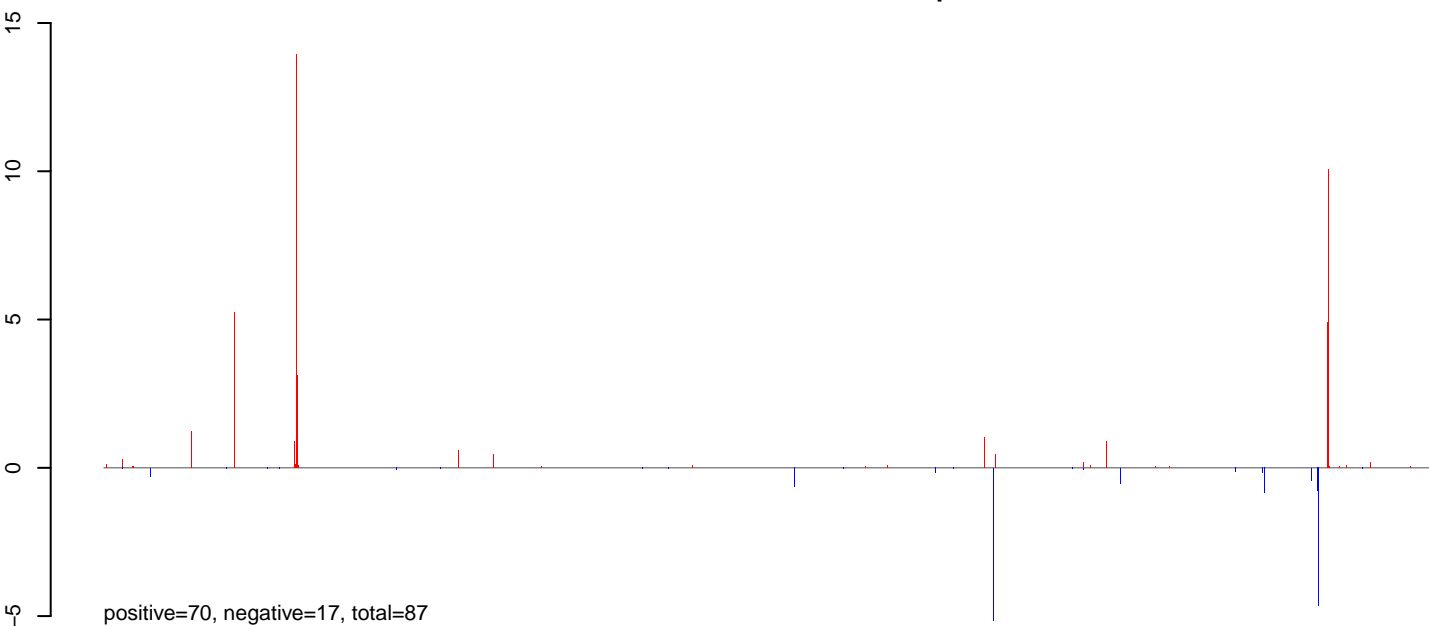


0 200000 400000 600000 800000 1000000 1200000

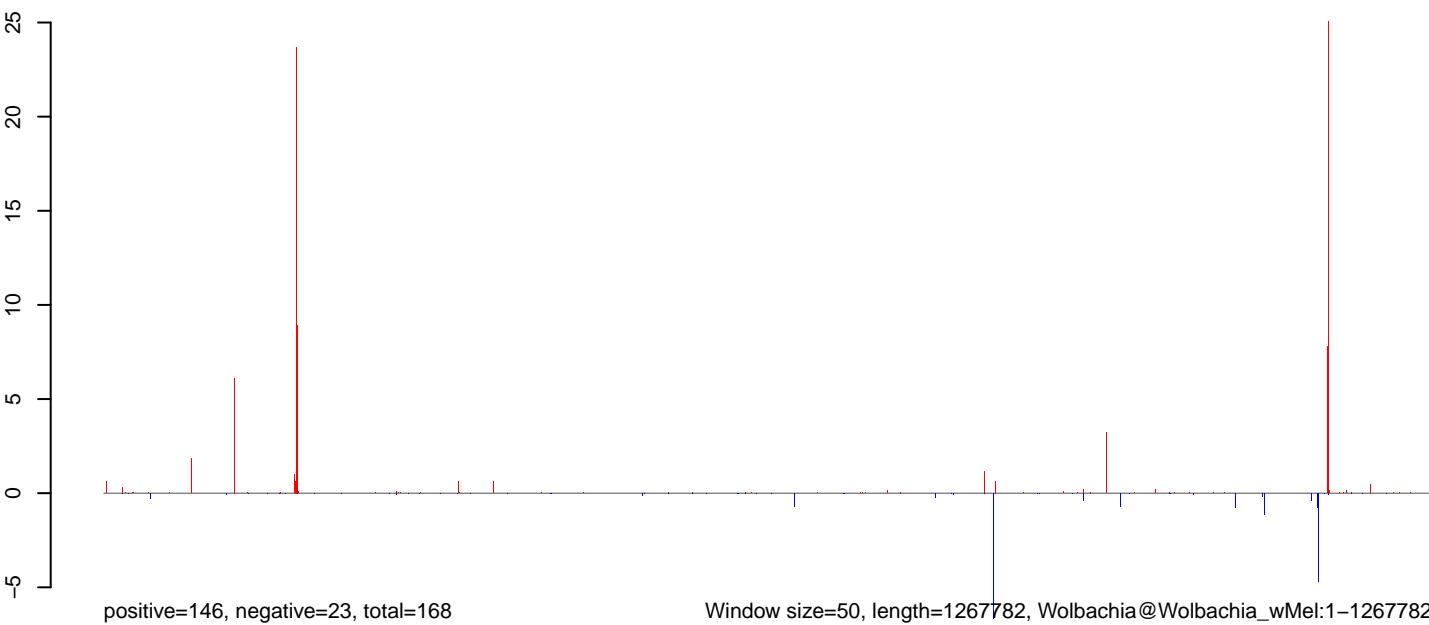
AeAlbo_Mcarc_OA.18_23.rep



AeAlbo_Mcarc_OA.24_35.rep



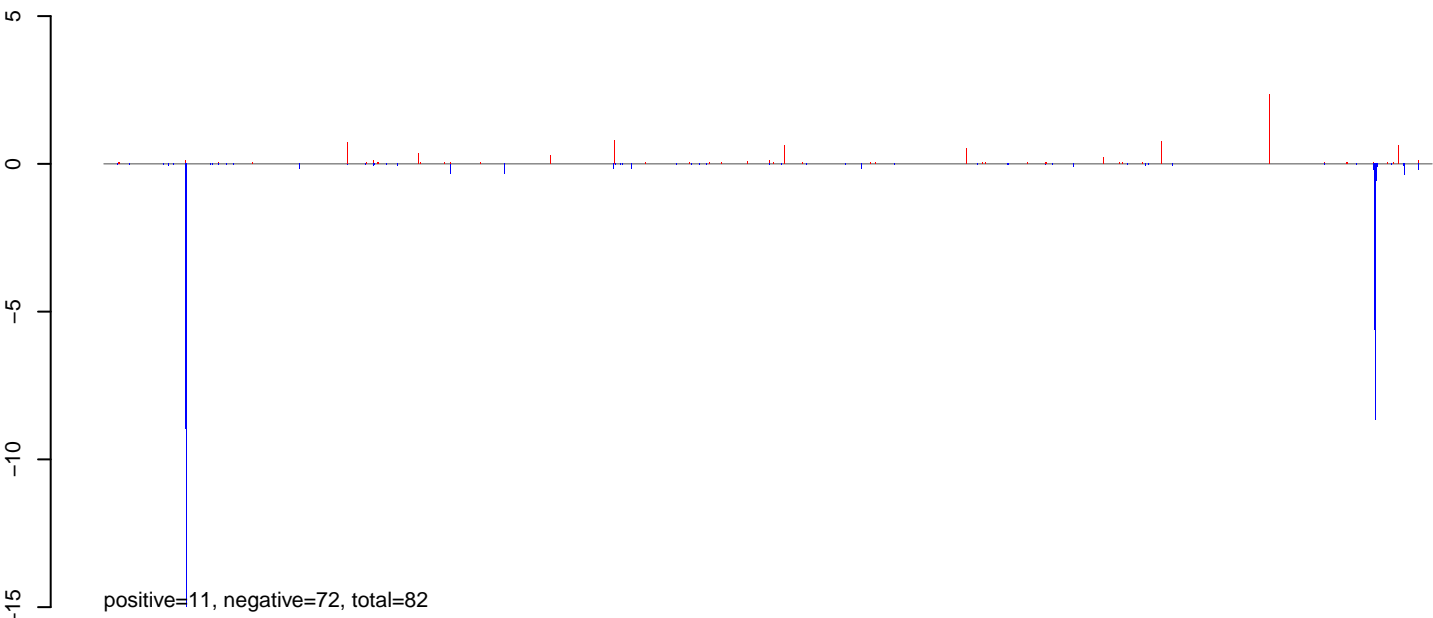
AeAlbo_Mcarc_OA.rep



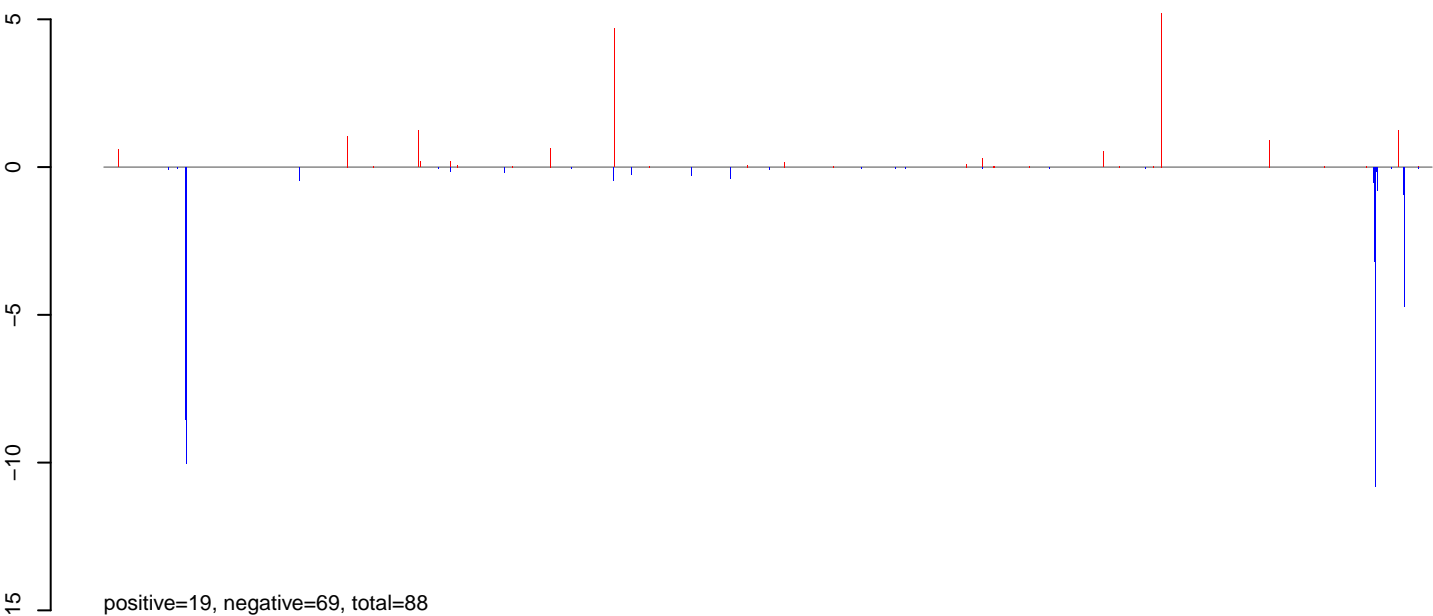
Window size=50, length=1267782, Wolbachia@Wolbachia_wMel:1-1267782

0 200000 400000 600000 800000 1000000 1200000

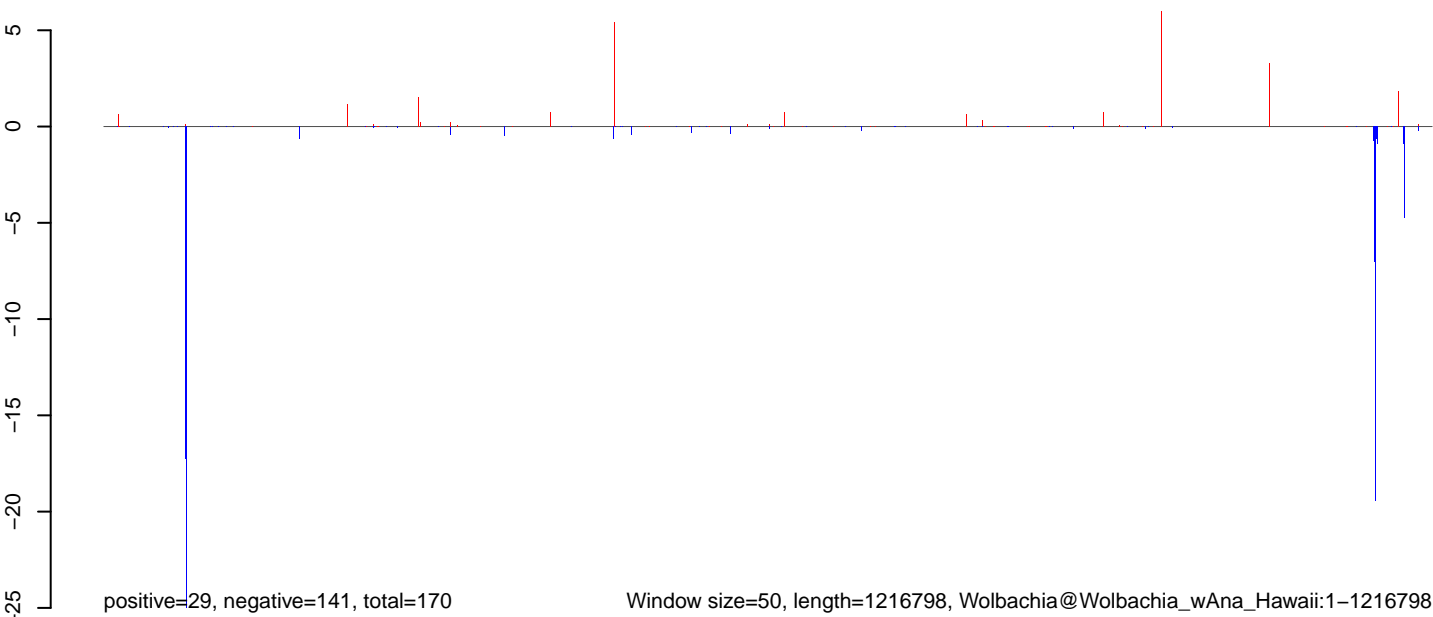
AeAlbo_Mcarc_OA.18_23.rep



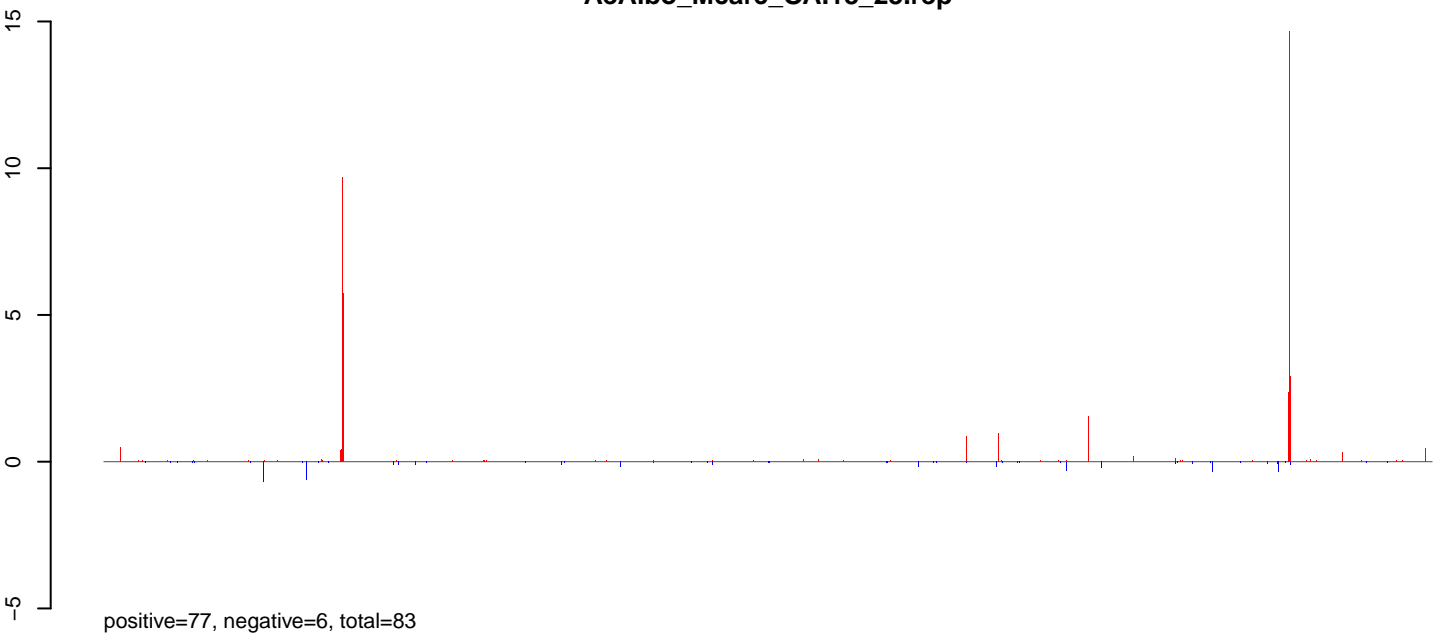
AeAlbo_Mcarc_OA.24_35.rep



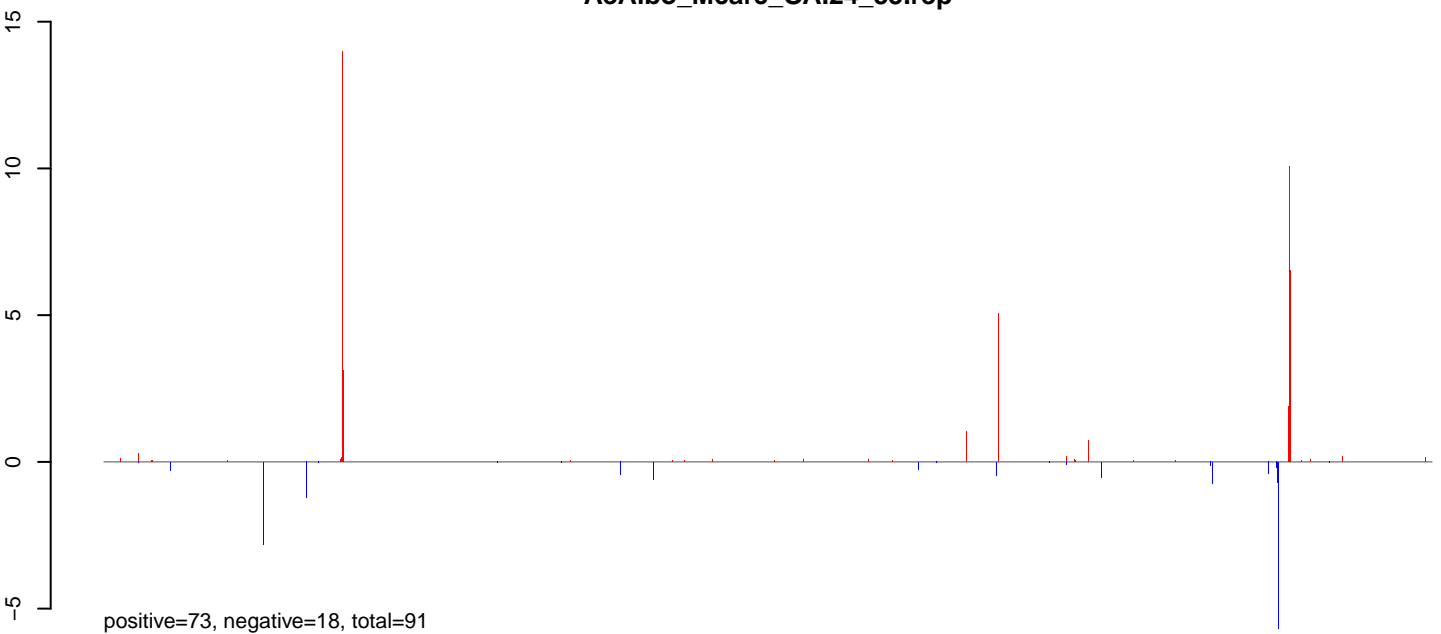
AeAlbo_Mcarc_OA.rep



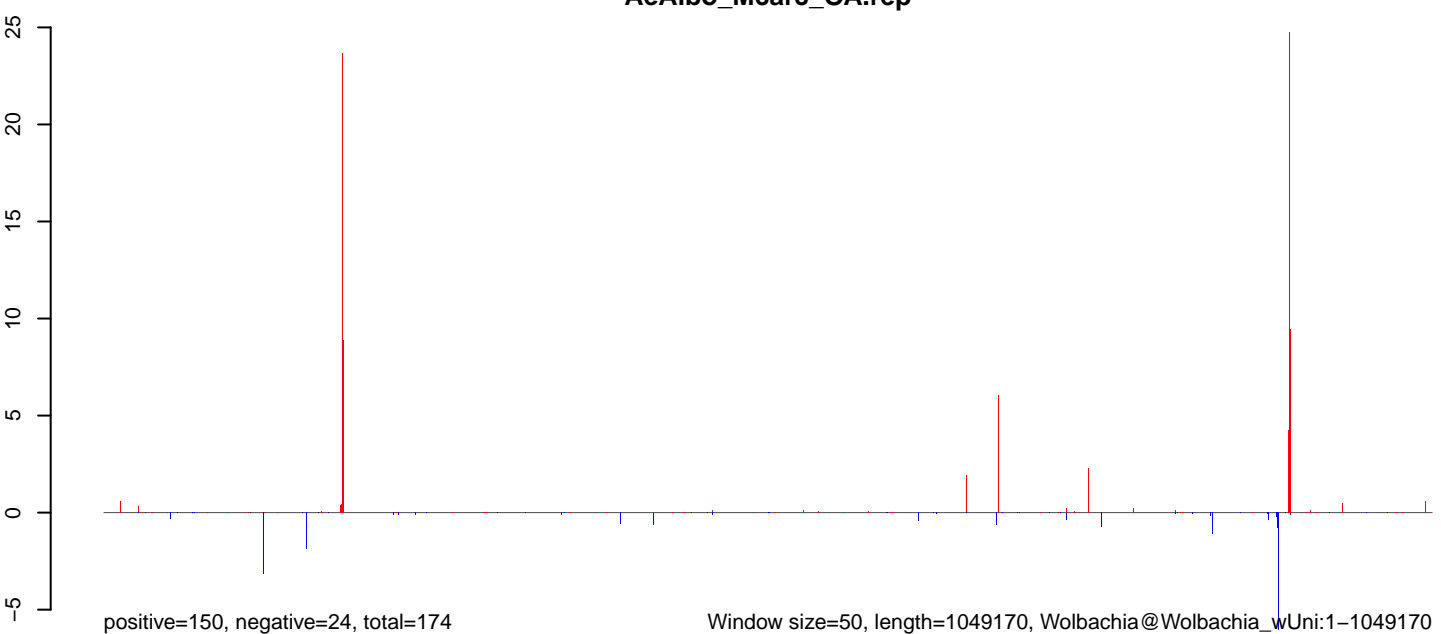
AeAlbo_Mcarc_OA.18_23.rep



AeAlbo_Mcarc_OA.24_35.rep



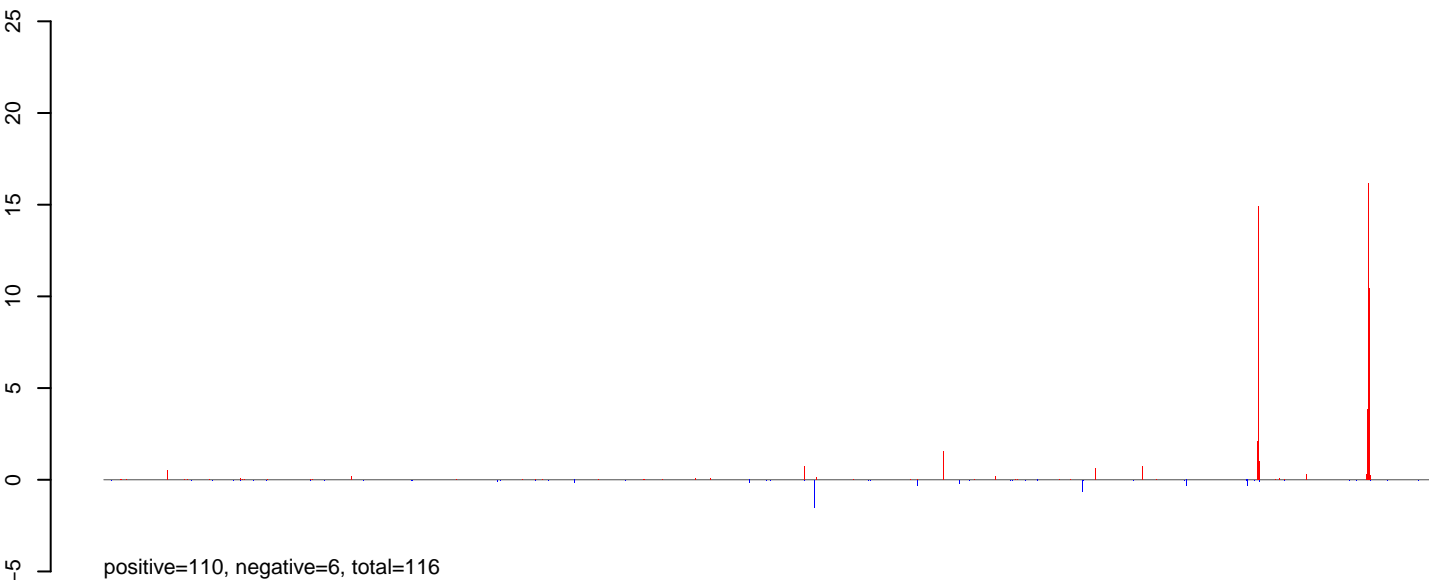
AeAlbo_Mcarc_OA.rep



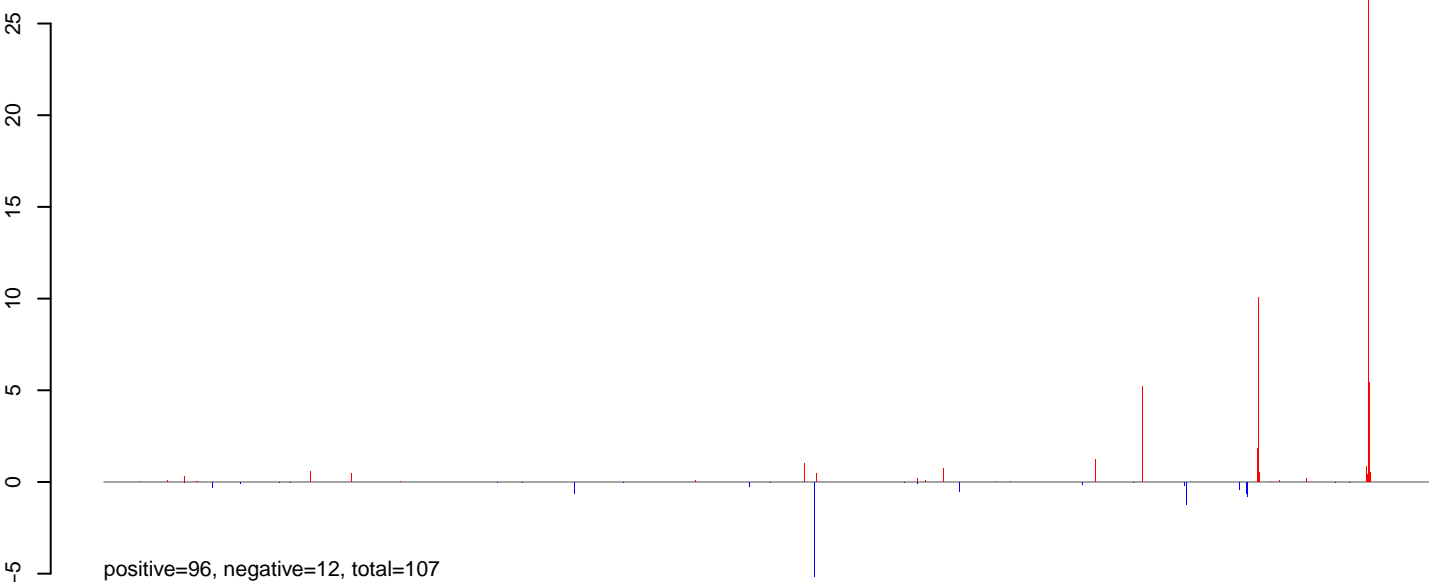
Window size=50, length=1049170, Wolbachia@Wolbachia_wUni:1-1049170

0e+00 2e+05 4e+05 6e+05 8e+05 1e+06

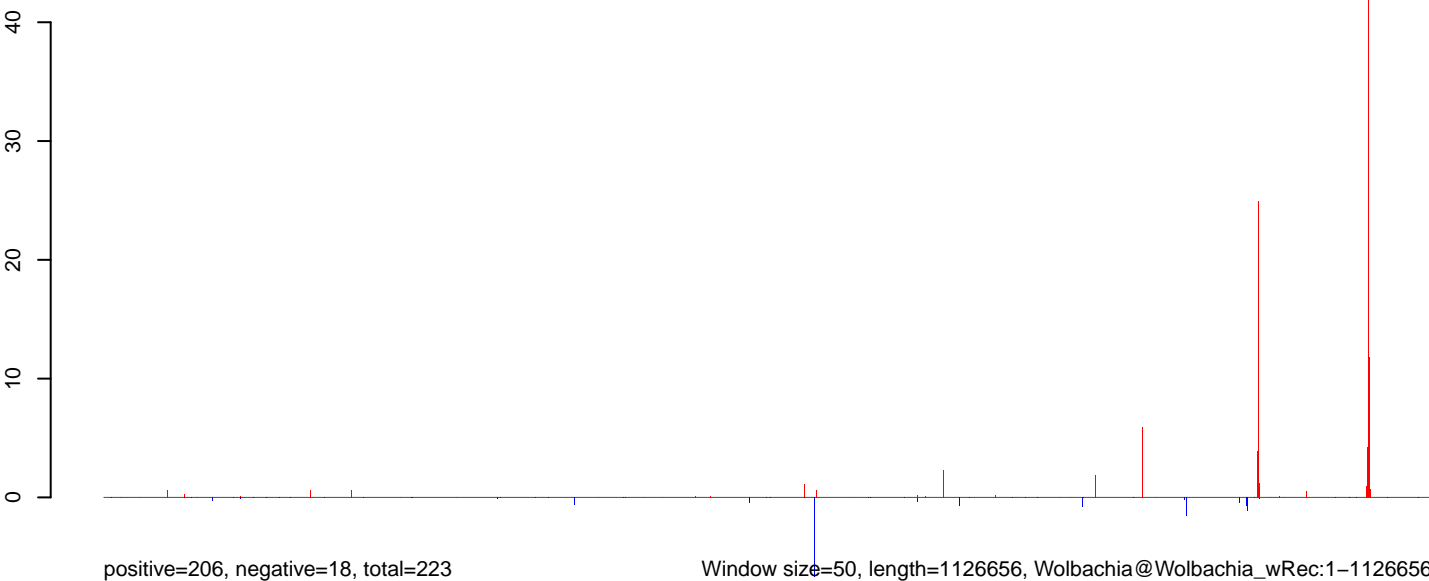
AeAlbo_Mcarc_OA.18_23.rep



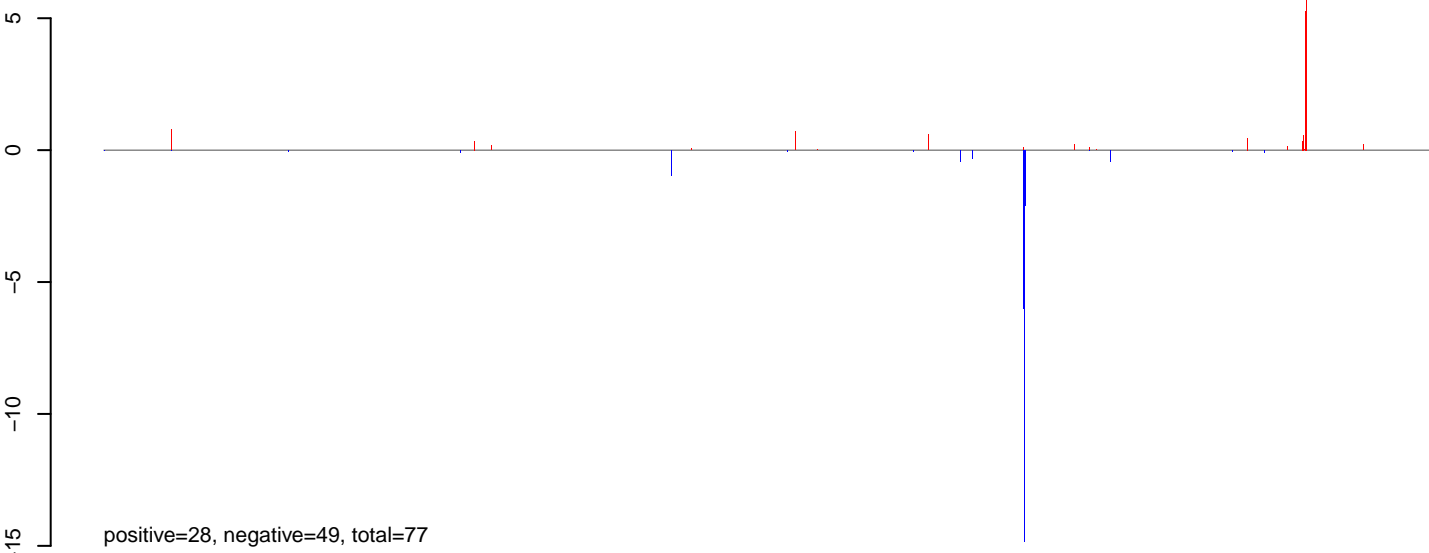
AeAlbo_Mcarc_OA.24_35.rep



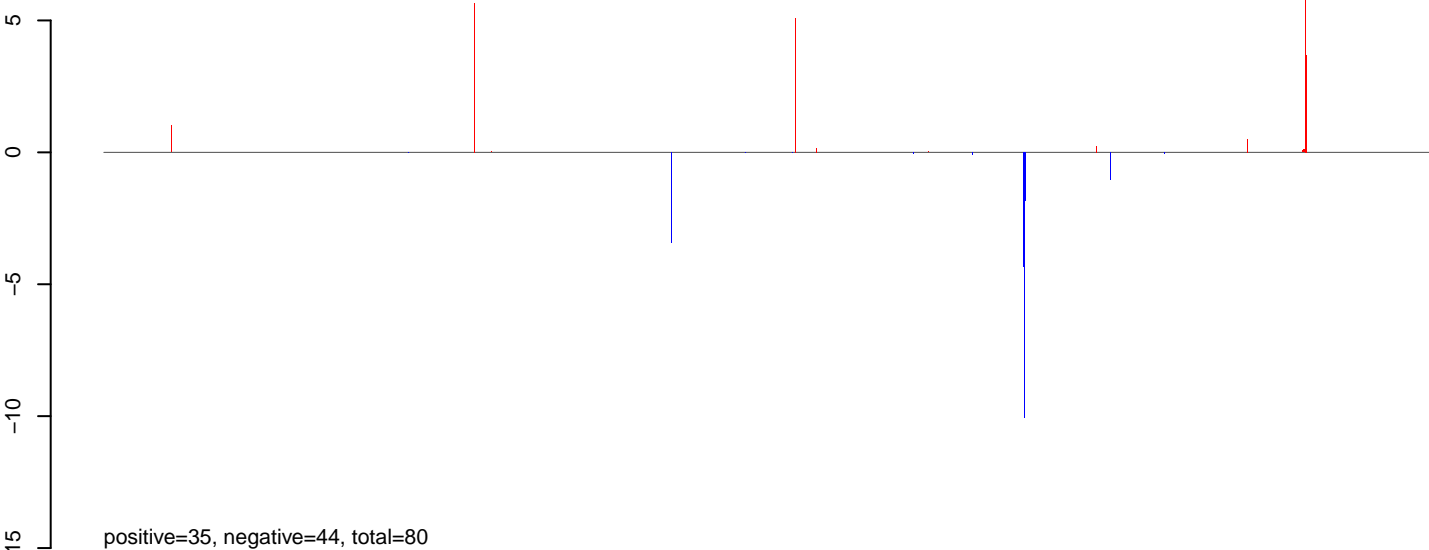
AeAlbo_Mcarc_OA.rep



AeAlbo_Mcarc_OA.18_23.rep



AeAlbo_Mcarc_OA.24_35.rep



AeAlbo_Mcarc_OA.rep

