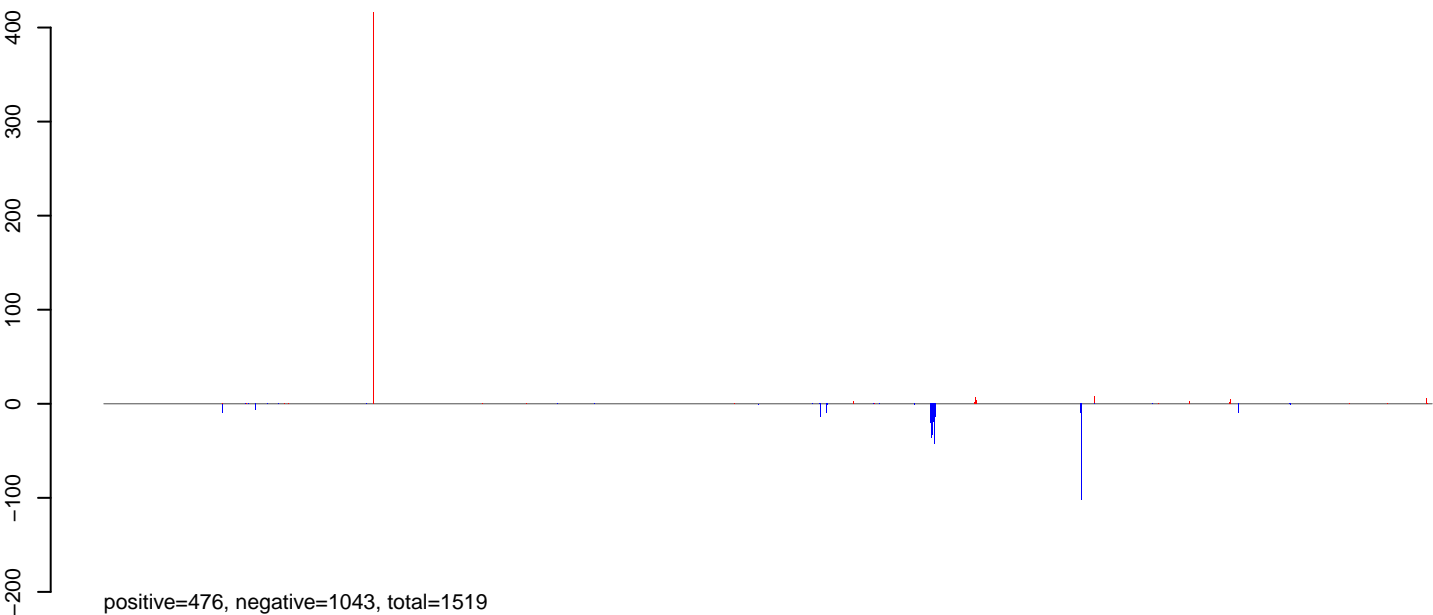
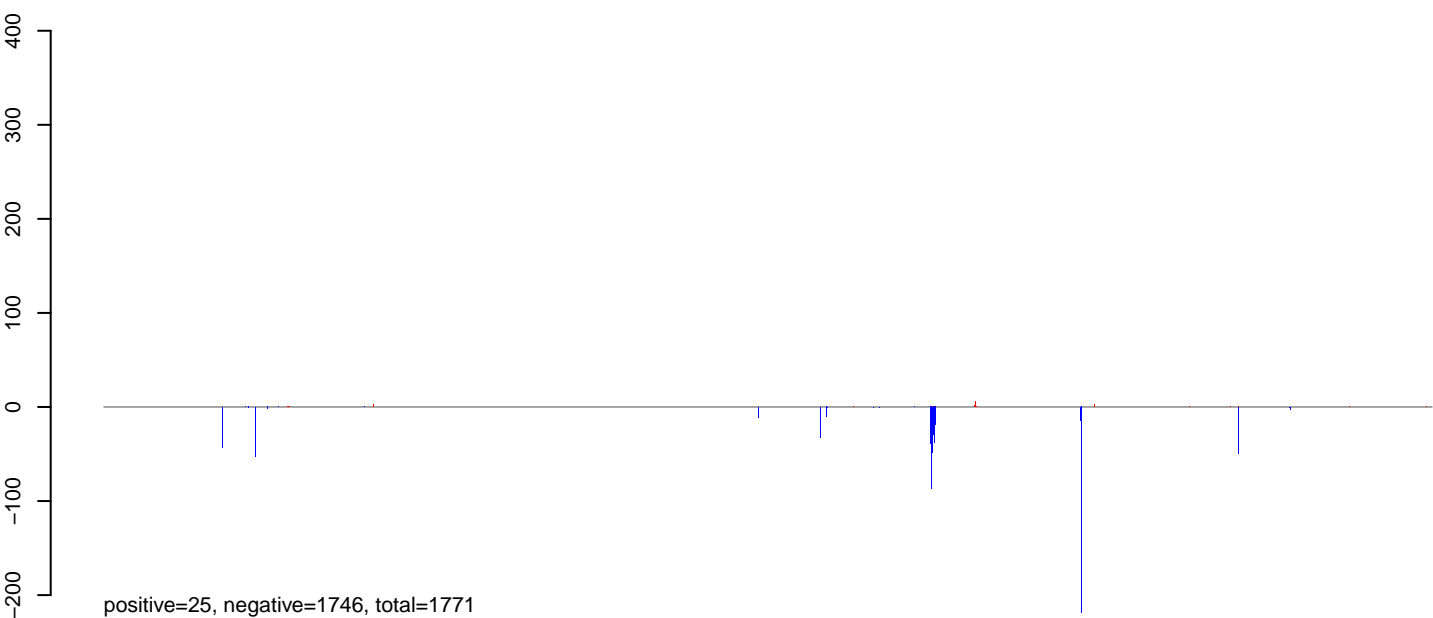


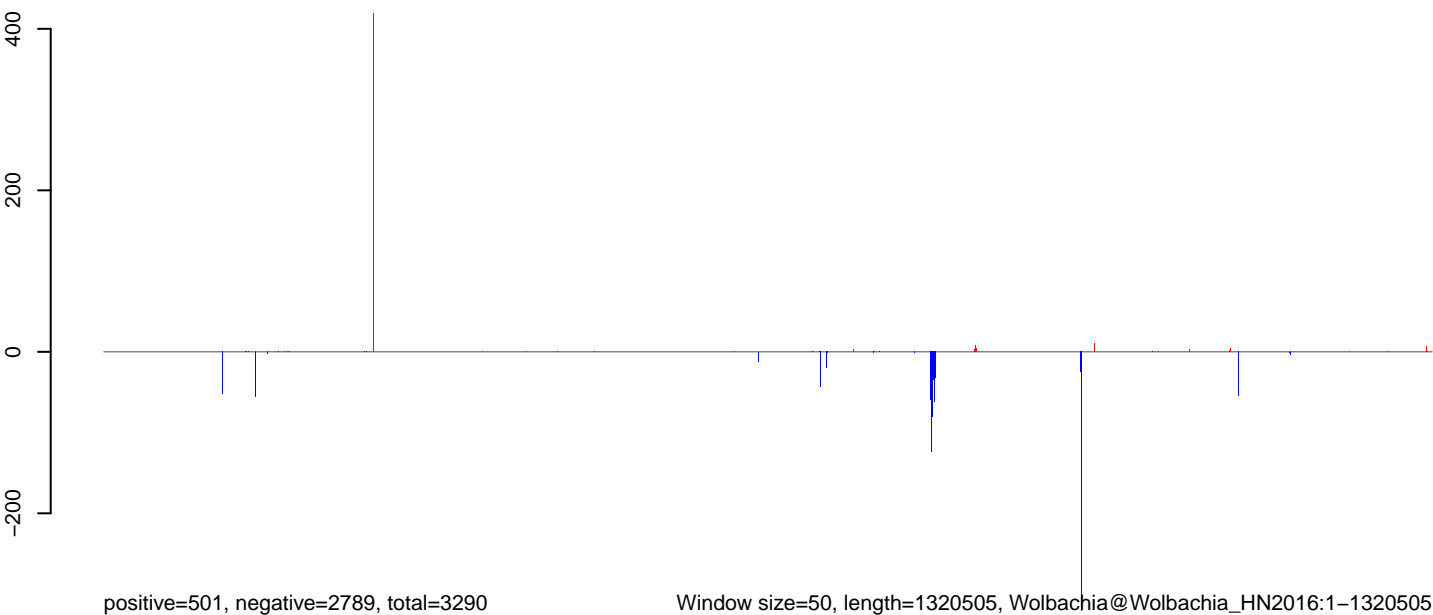
AnGam_WholeFemale_BF_IB.18_23.rep



AnGam_WholeFemale_BF_IB.24_35.rep

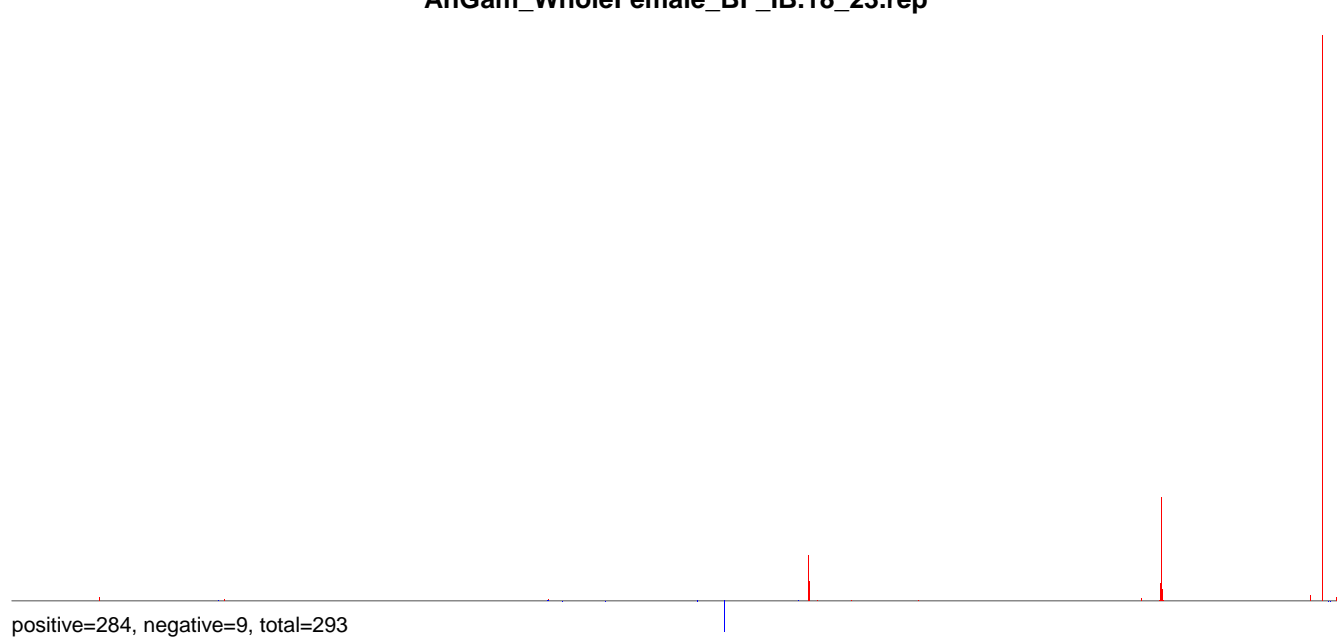


AnGam_WholeFemale_BF_IB.rep

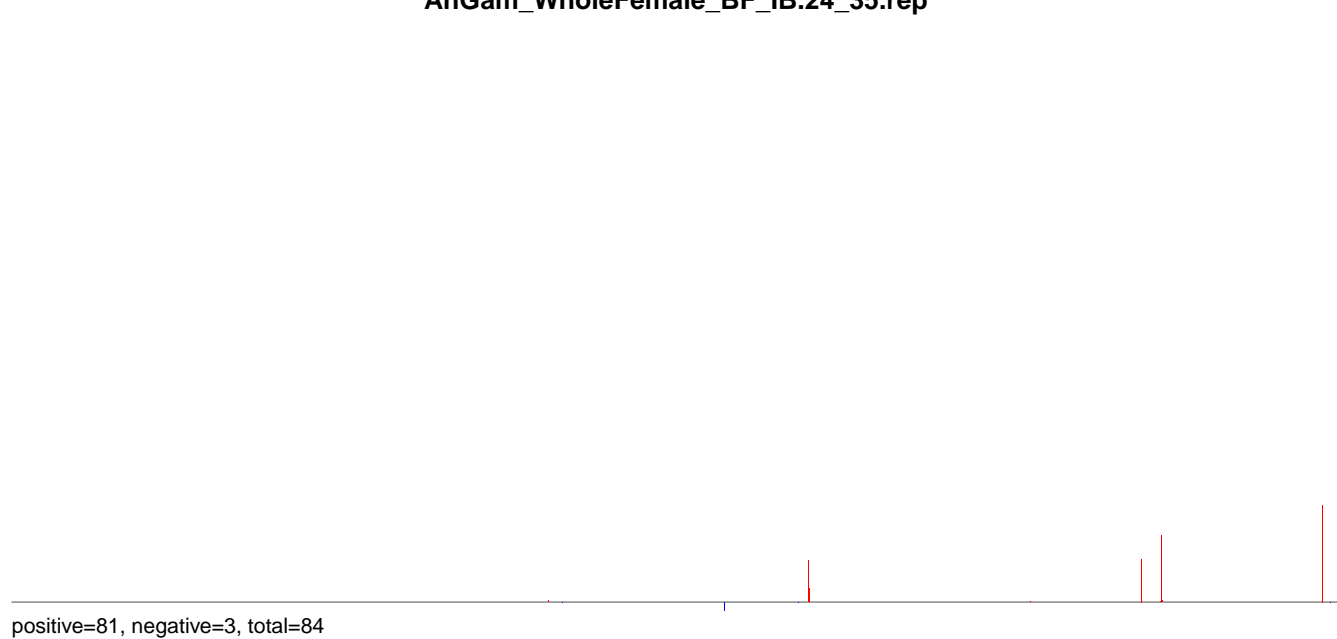


0 200000 400000 600000 800000 1000000 1200000

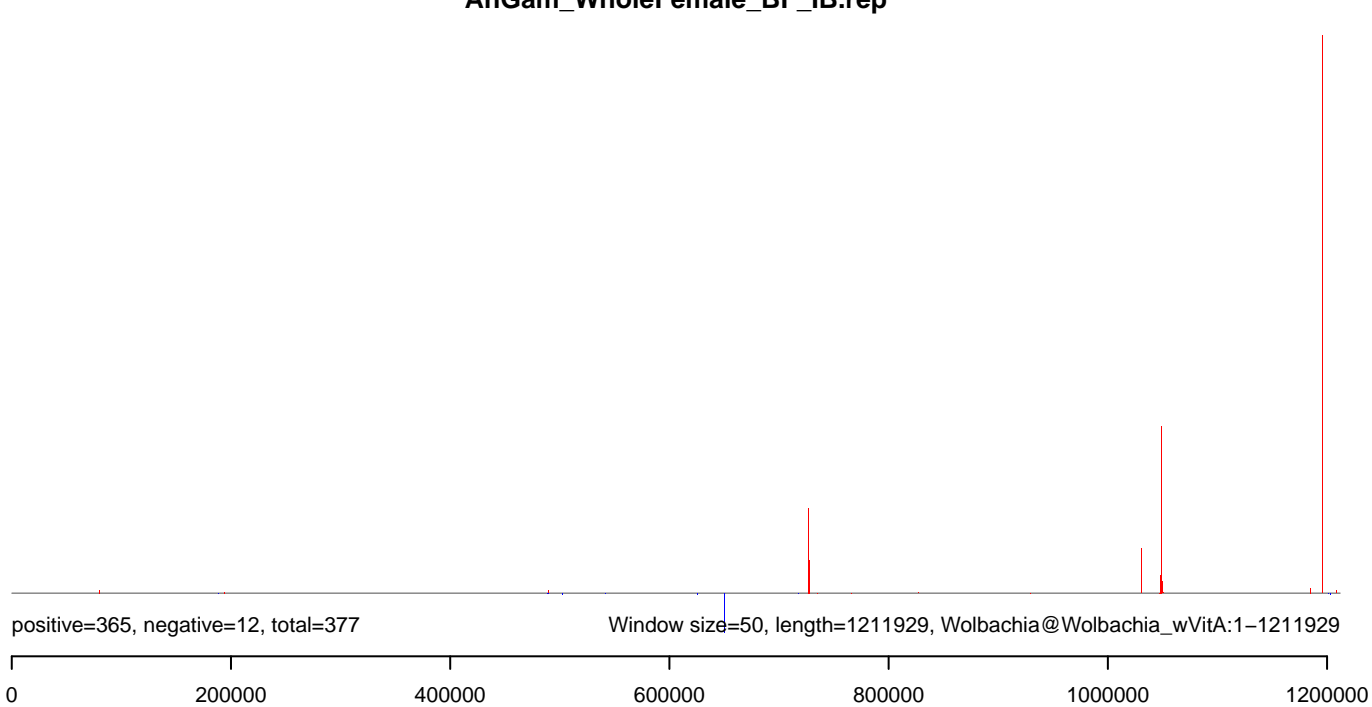
AnGam_WholeFemale_BF_IB.18_23.rep



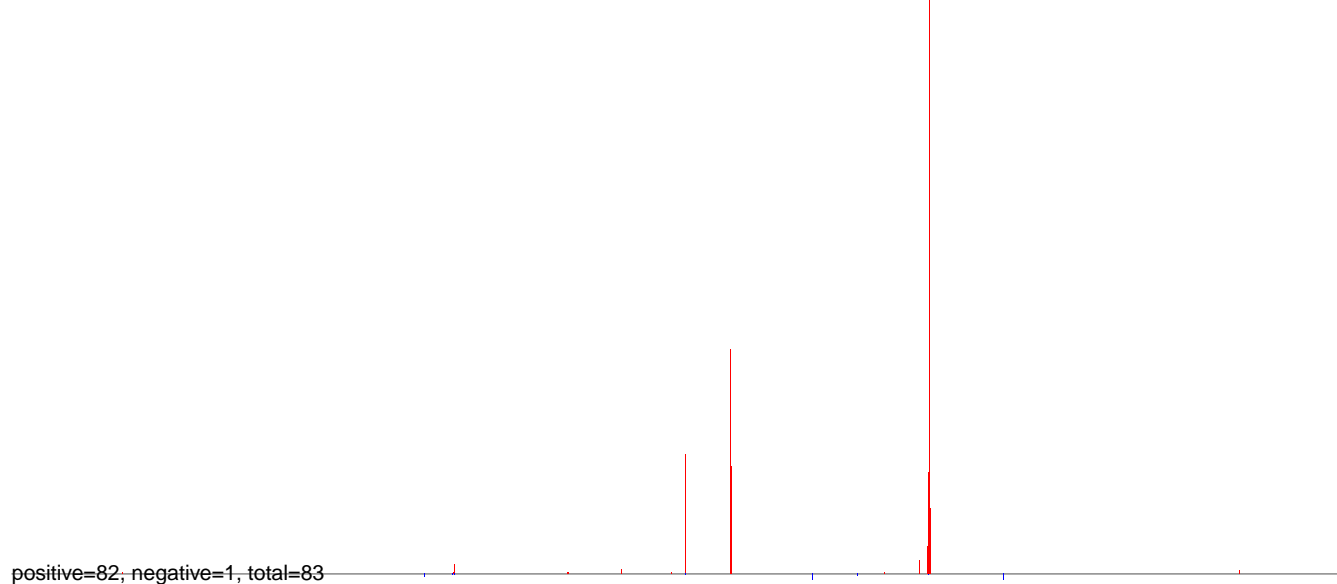
AnGam_WholeFemale_BF_IB.24_35.rep



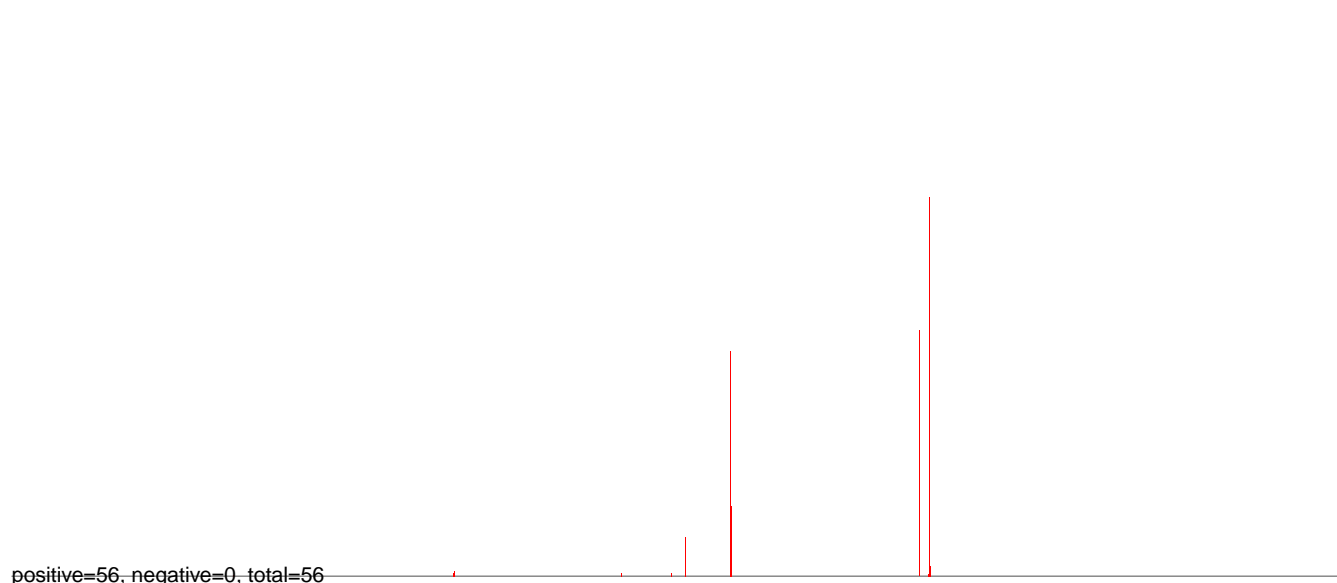
AnGam_WholeFemale_BF_IB.rep



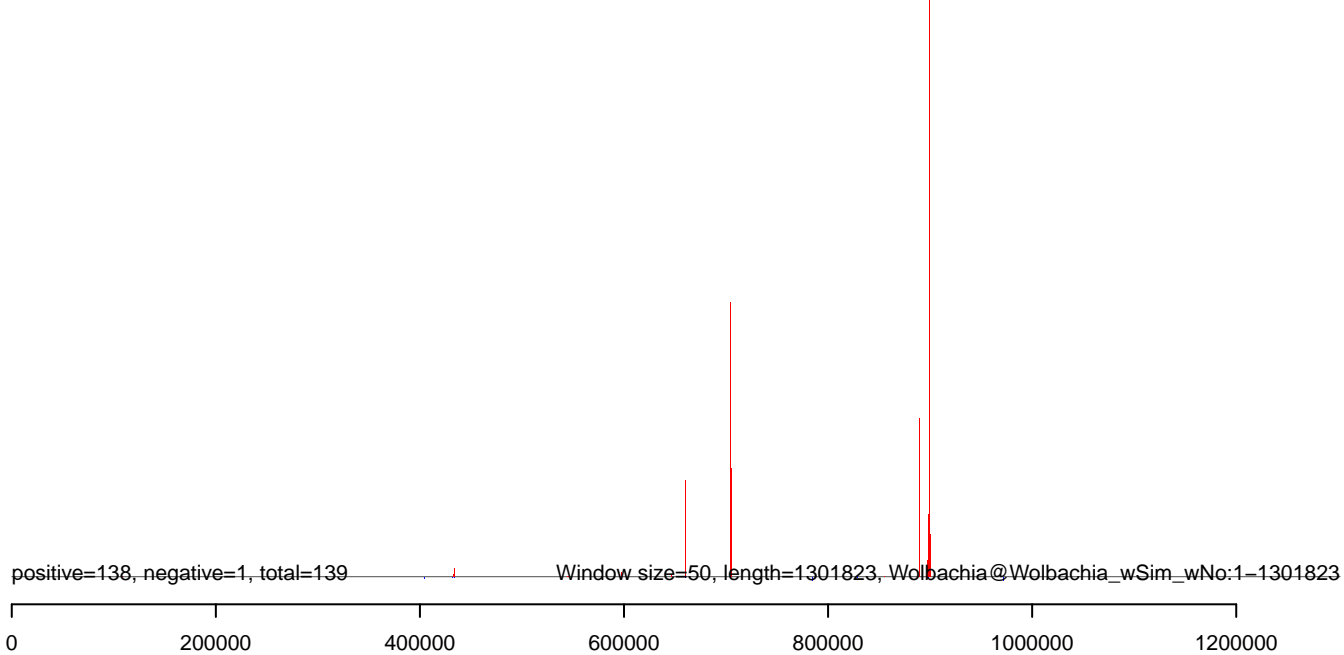
AnGam_WholeFemale_BF_IB.18_23.rep



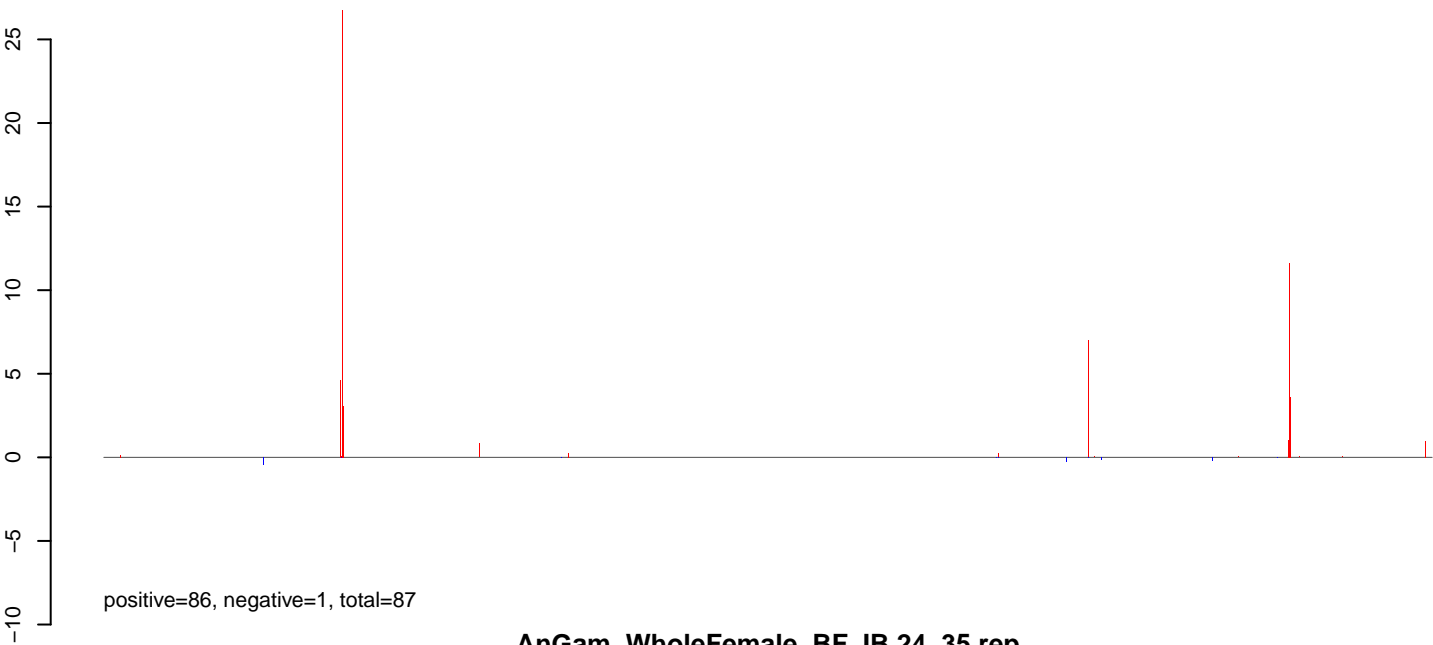
AnGam_WholeFemale_BF_IB.24_35.rep



AnGam_WholeFemale_BF_IB.rep



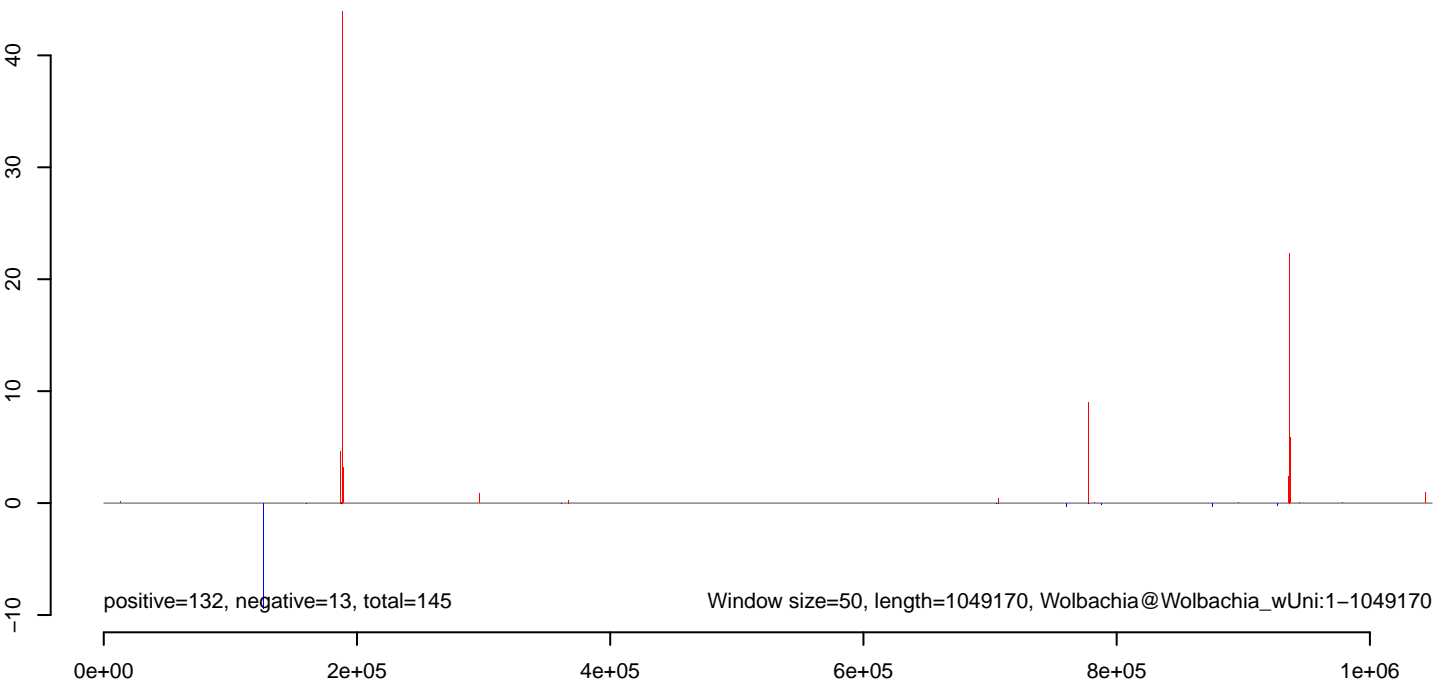
AnGam_WholeFemale_BF_IB.18_23.rep



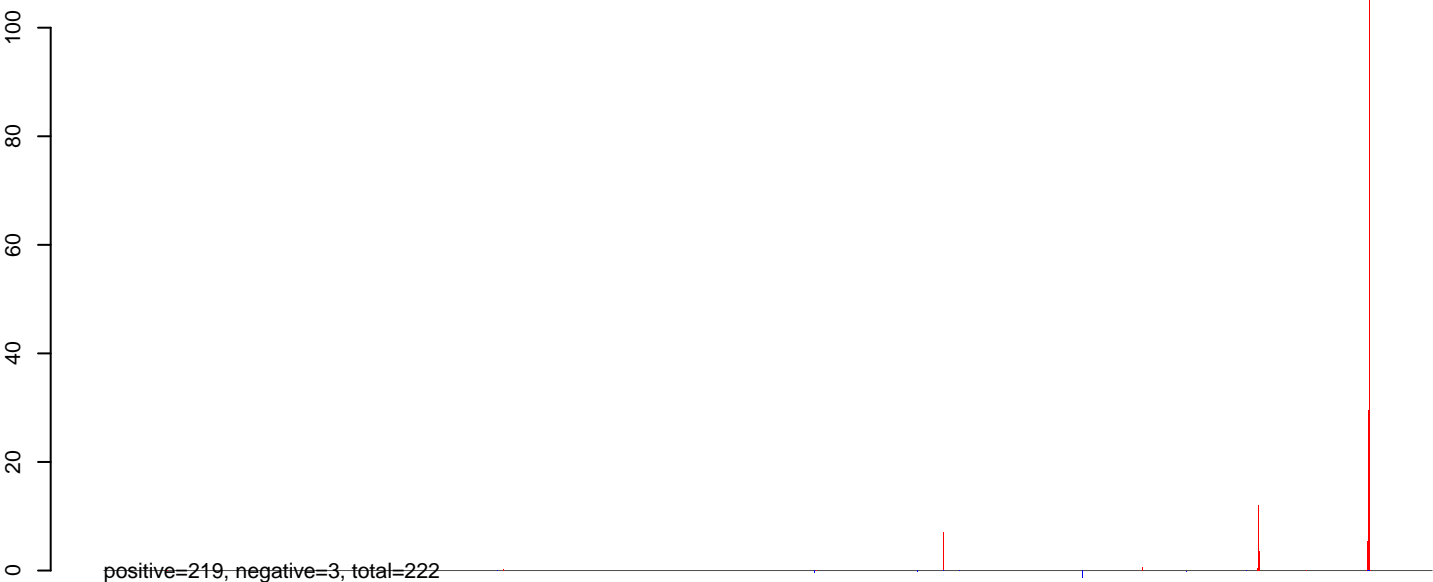
AnGam_WholeFemale_BF_IB.24_35.rep



AnGam_WholeFemale_BF_IB.rep



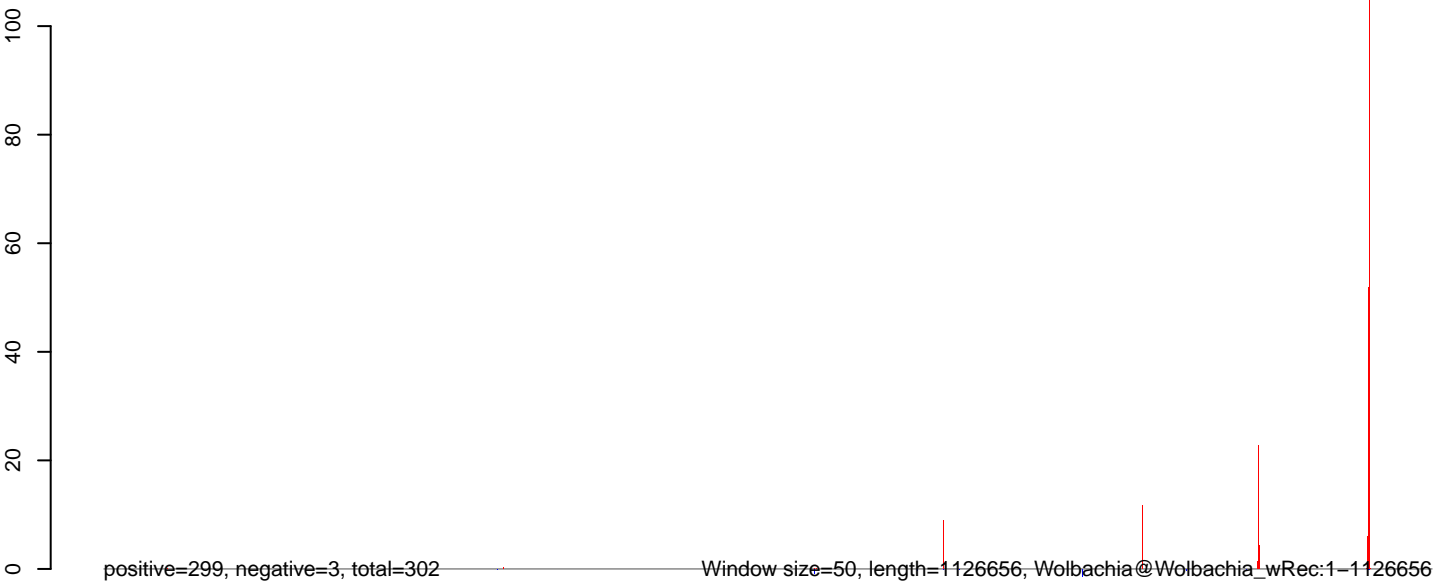
AnGam_WholeFemale_BF_IB.18_23.rep



AnGam_WholeFemale_BF_IB.24_35.rep

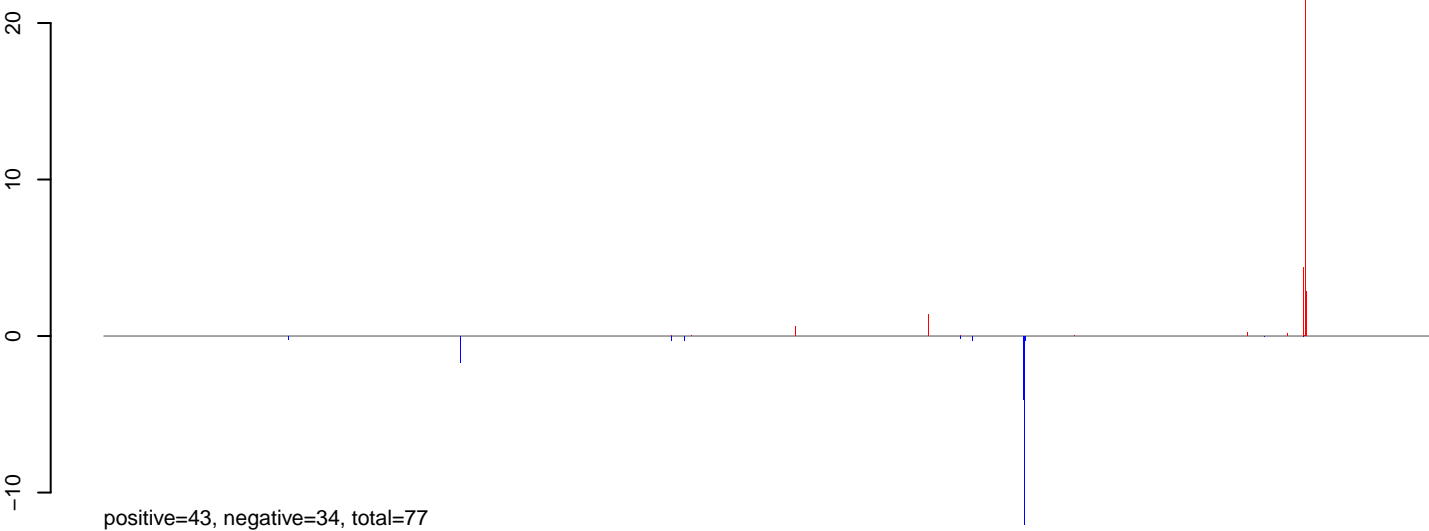


AnGam_WholeFemale_BF_IB.rep

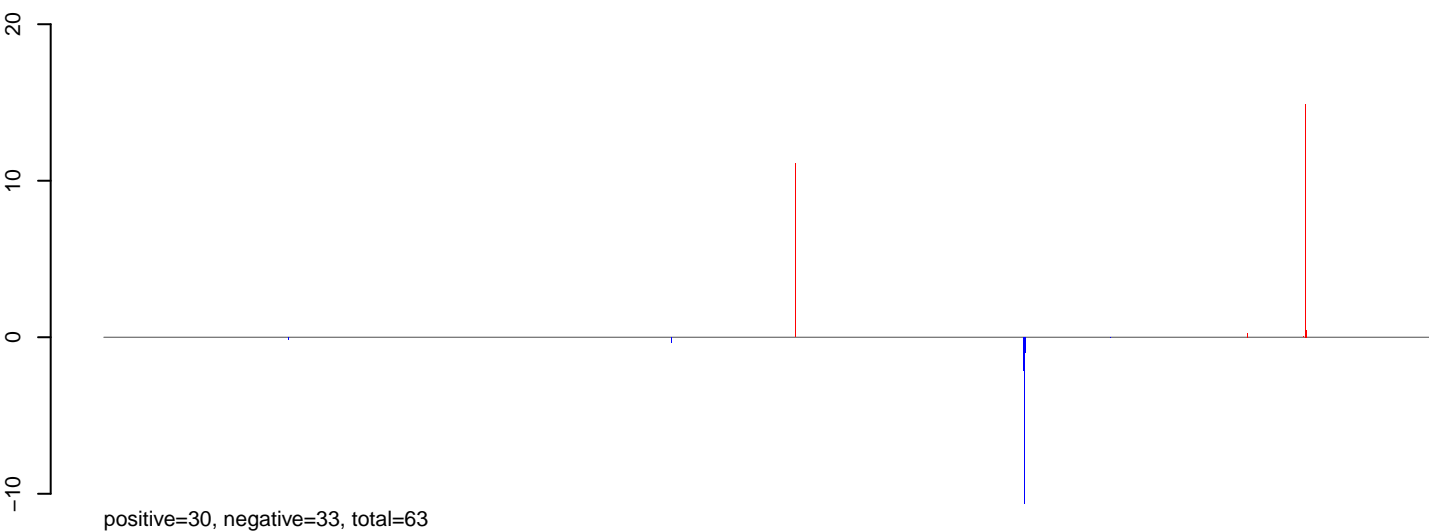


0e+00 2e+05 4e+05 6e+05 8e+05 1e+06

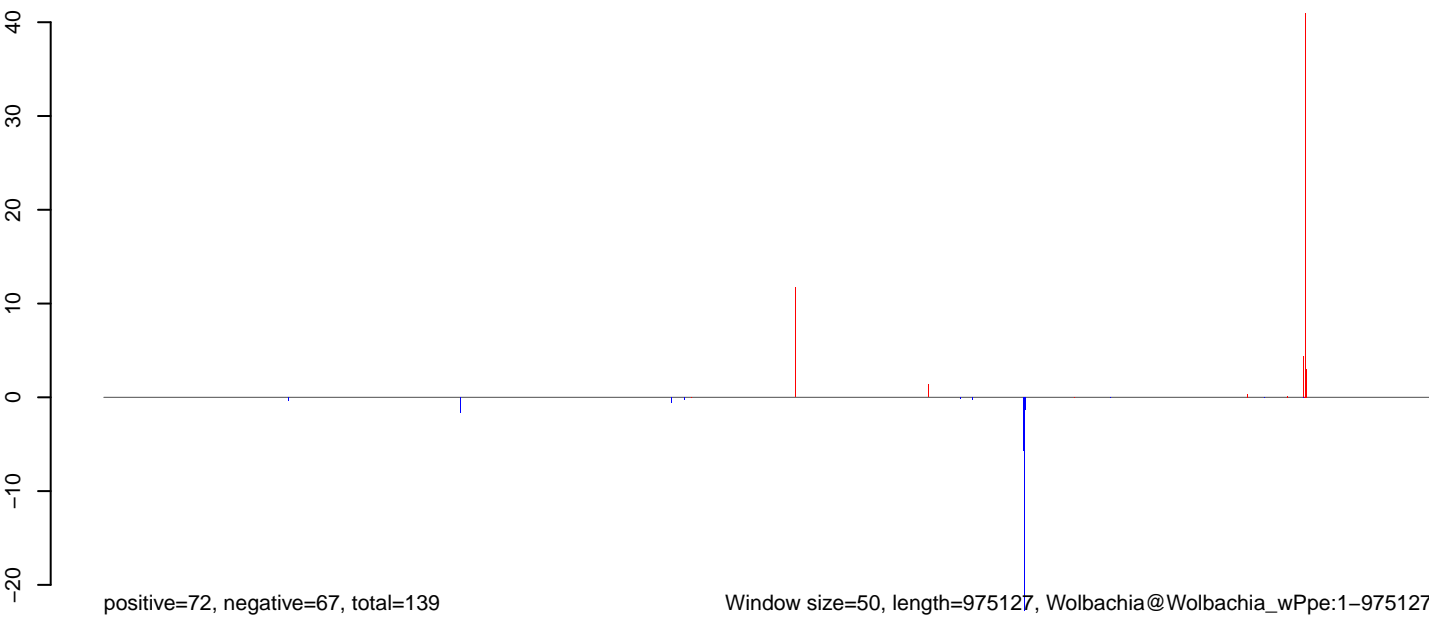
AnGam_WholeFemale_BF_IB.18_23.rep



AnGam_WholeFemale_BF_IB.24_35.rep

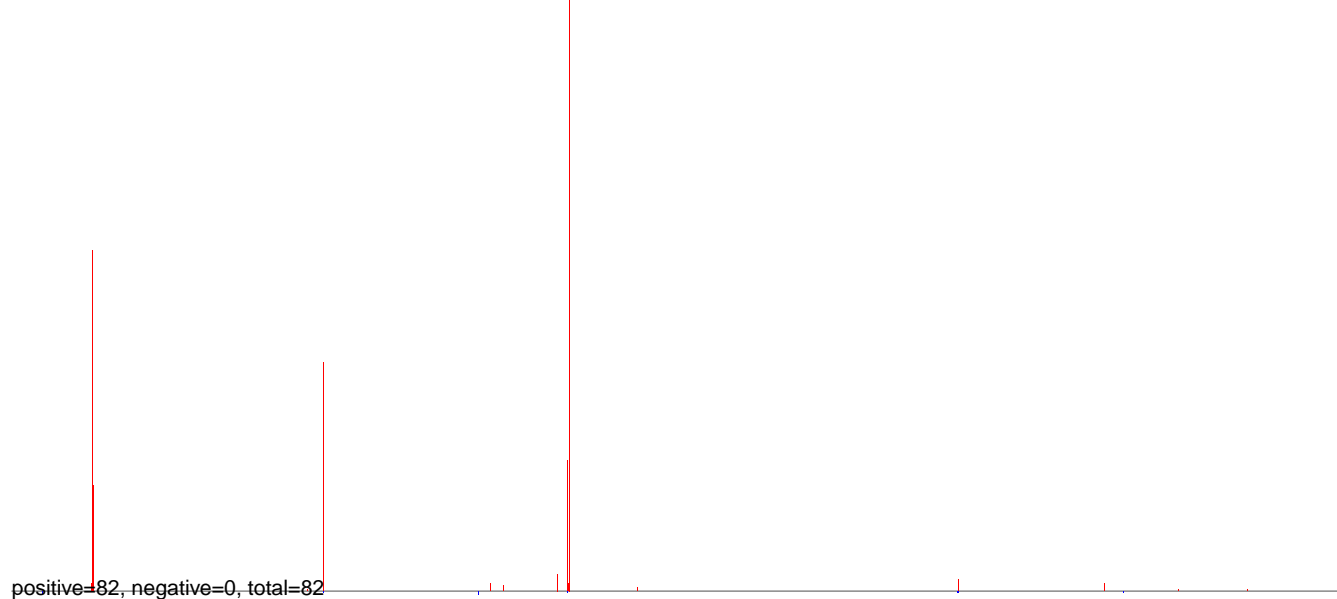


AnGam_WholeFemale_BF_IB.rep

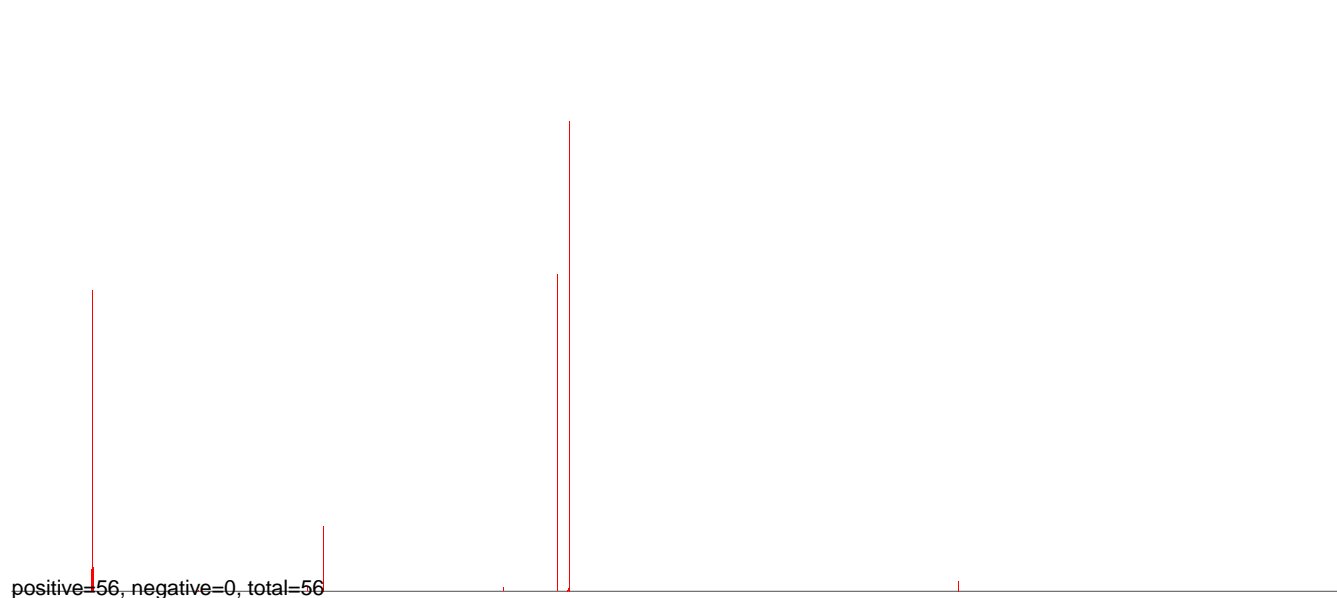


0e+00 2e+05 4e+05 6e+05 8e+05 1e+06

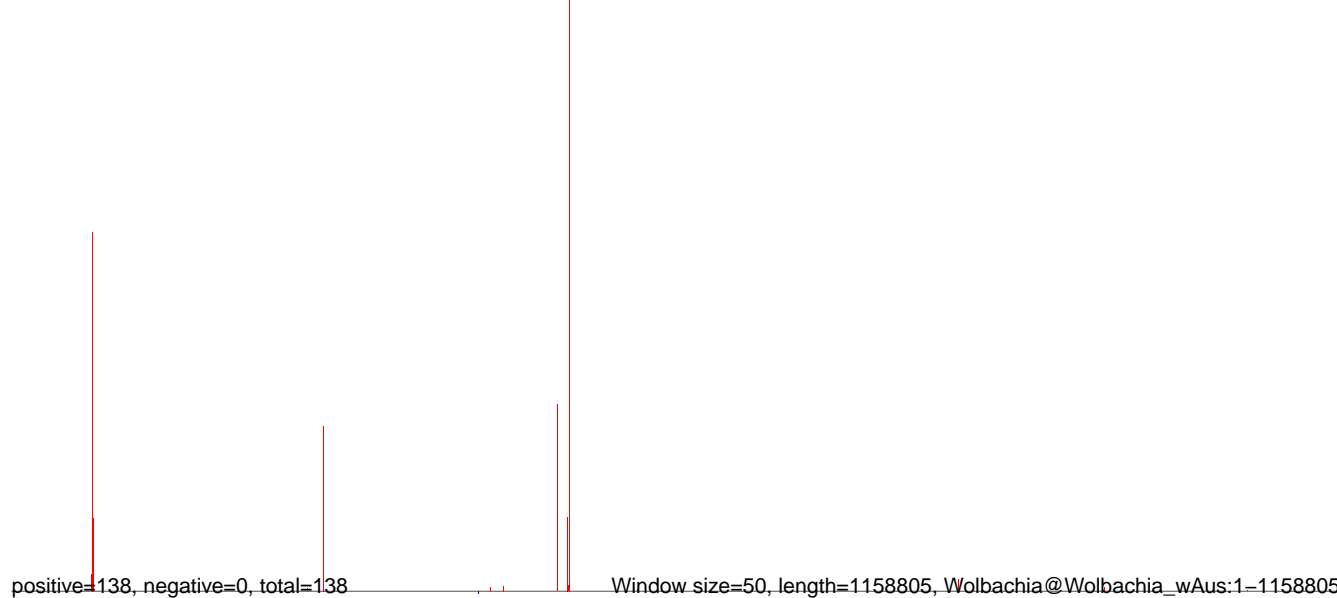
AnGam_WholeFemale_BF_IB.18_23.rep



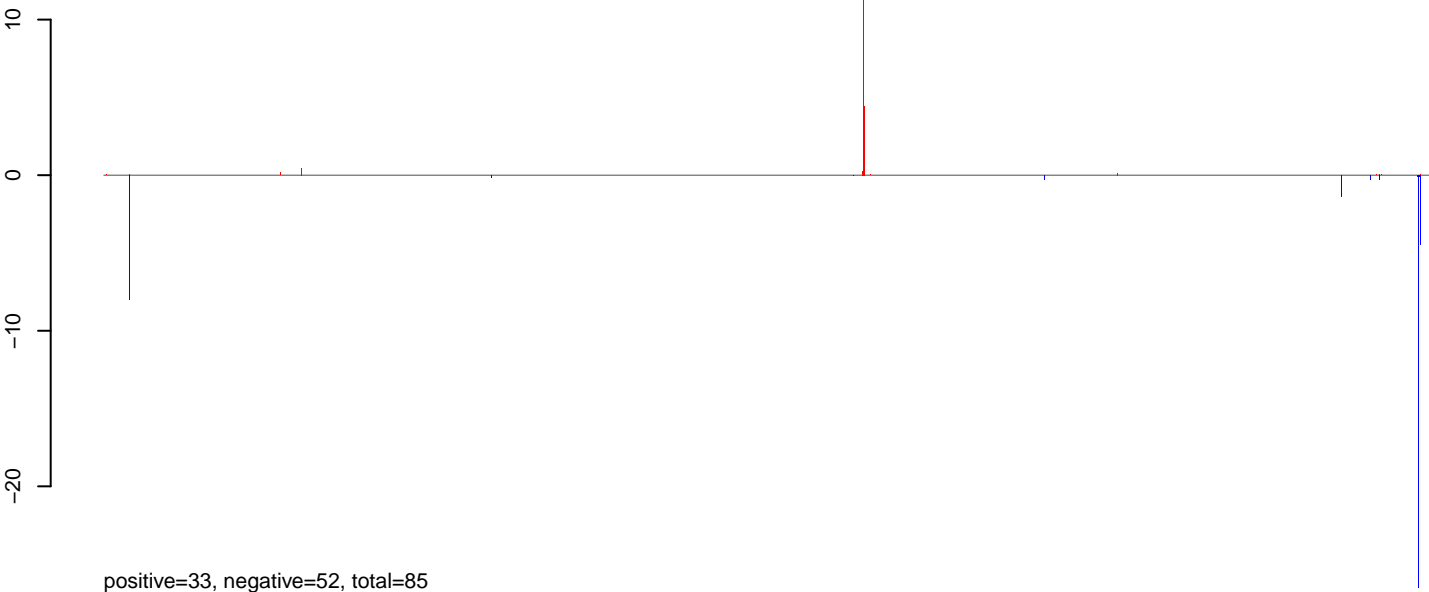
AnGam_WholeFemale_BF_IB.24_35.rep



AnGam_WholeFemale_BF_IB.rep



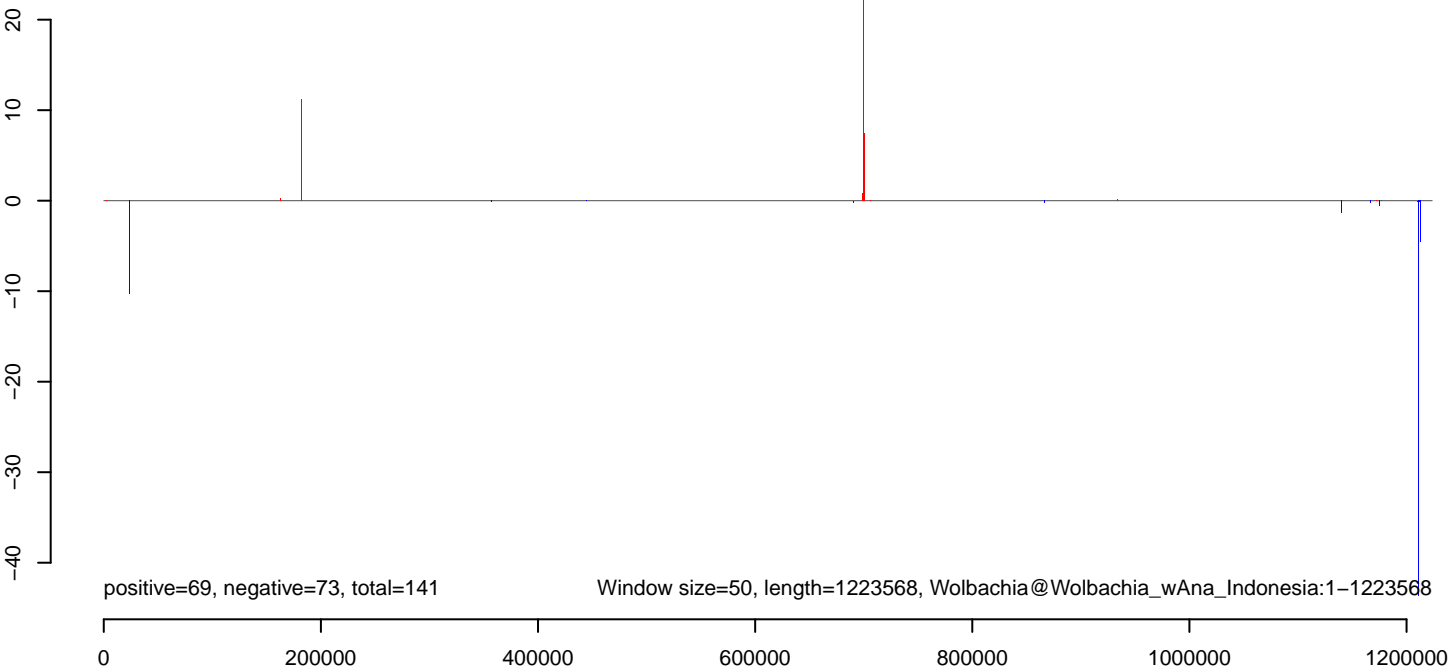
AnGam_WholeFemale_BF_IB.18_23.rep



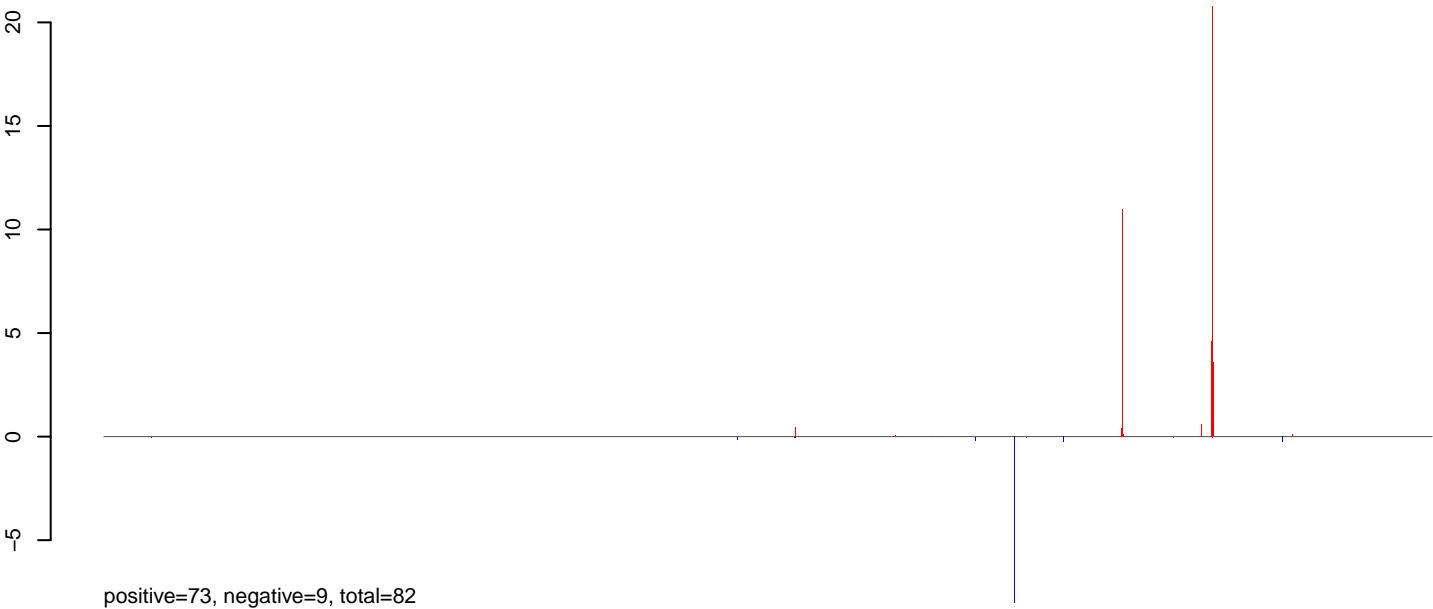
AnGam_WholeFemale_BF_IB.24_35.rep



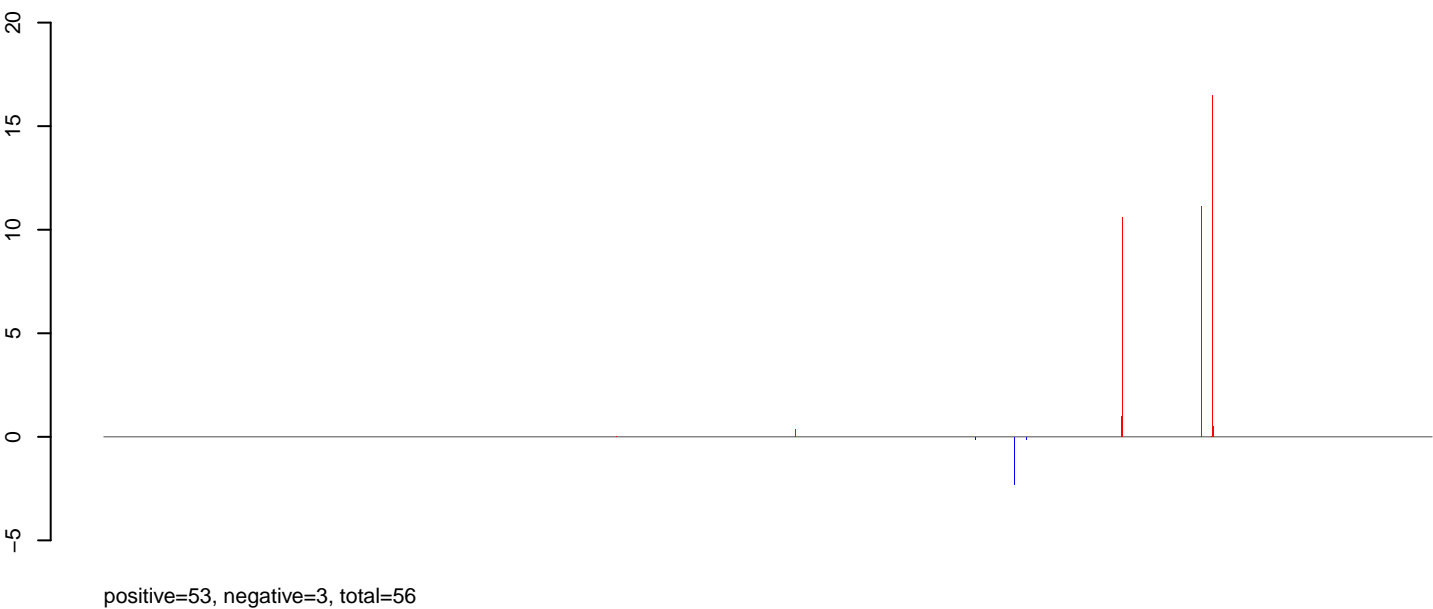
AnGam_WholeFemale_BF_IB.rep



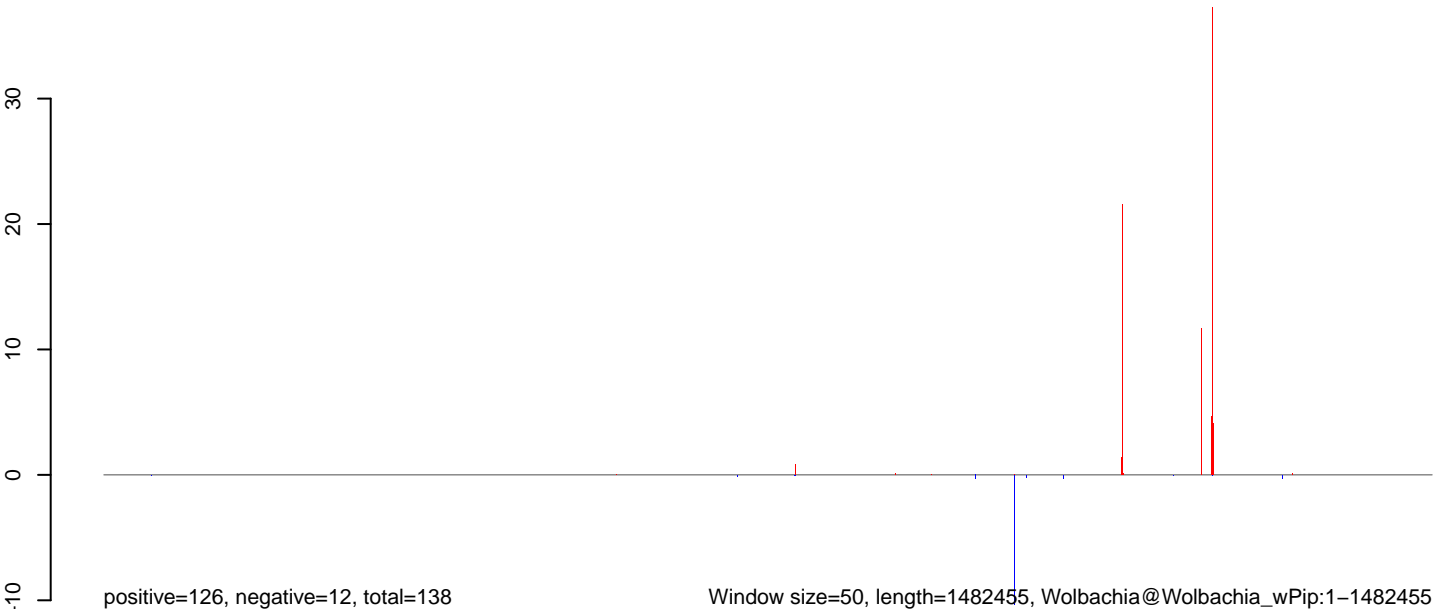
AnGam_WholeFemale_BF_IB.18_23.rep



AnGam_WholeFemale_BF_IB.24_35.rep

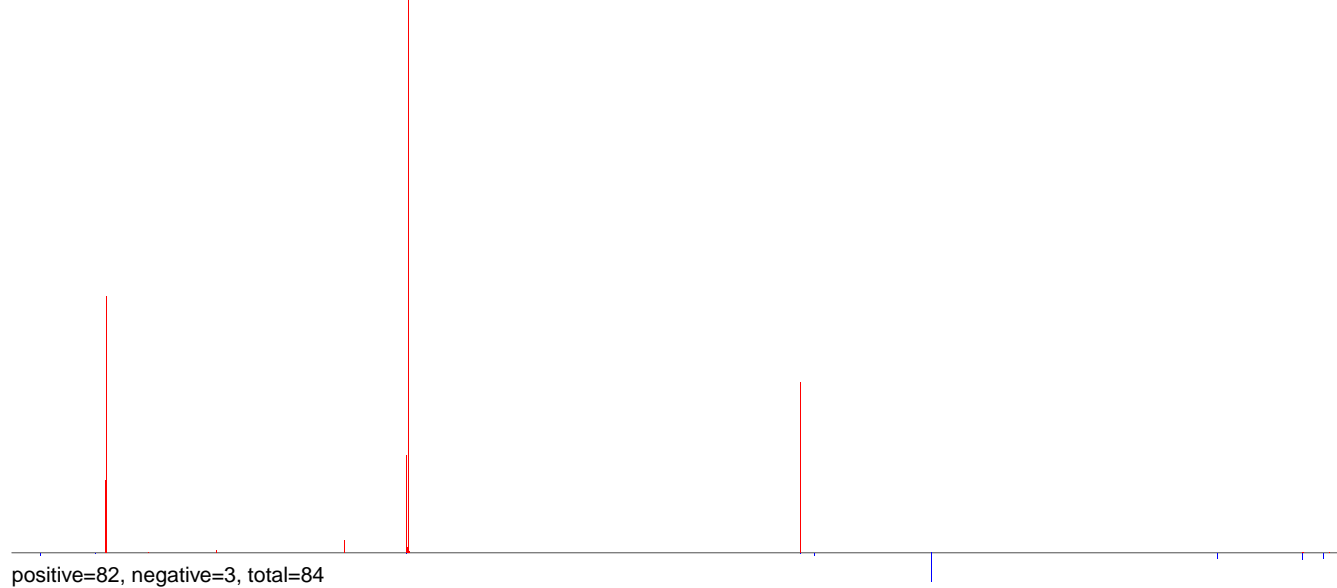


AnGam_WholeFemale_BF_IB.rep

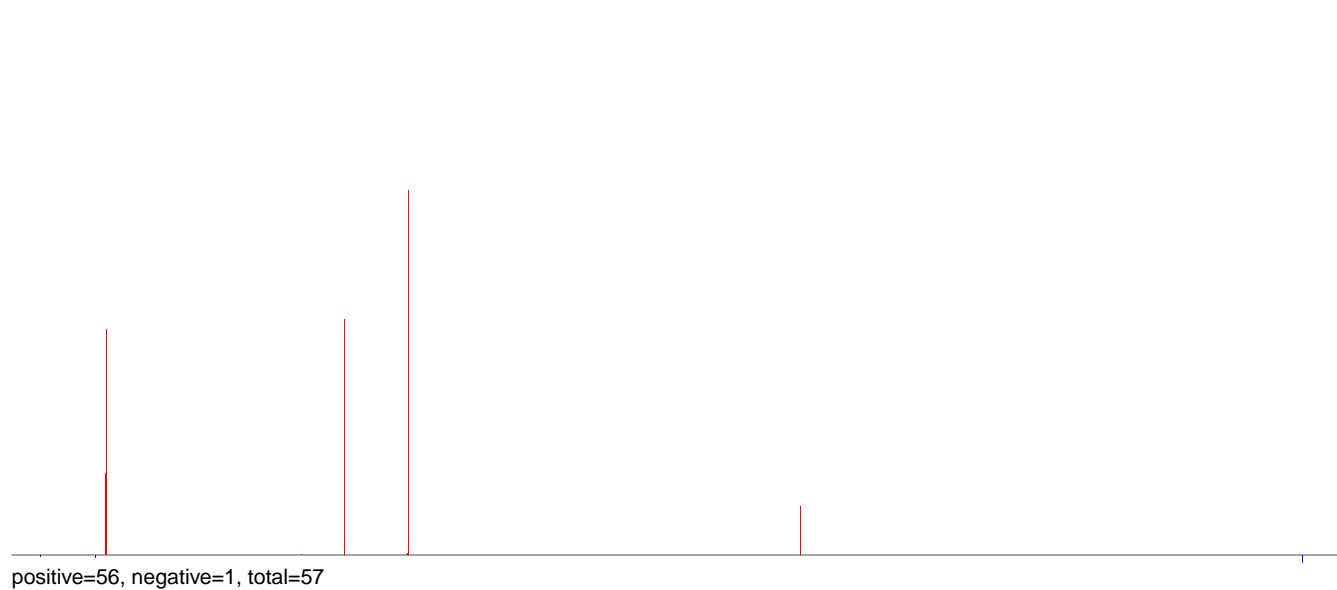


Window size=50, length=1482455, Wolbachia@Wolbachia_wPip:1-1482455

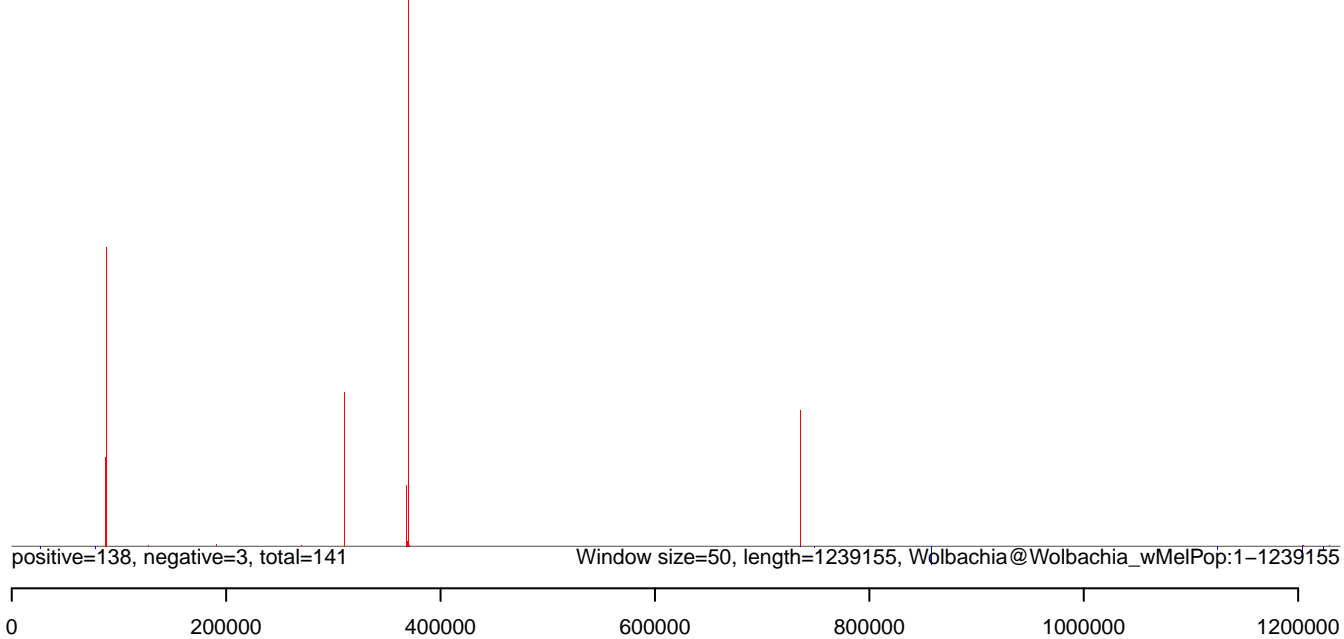
AnGam_WholeFemale_BF_IB.18_23.rep



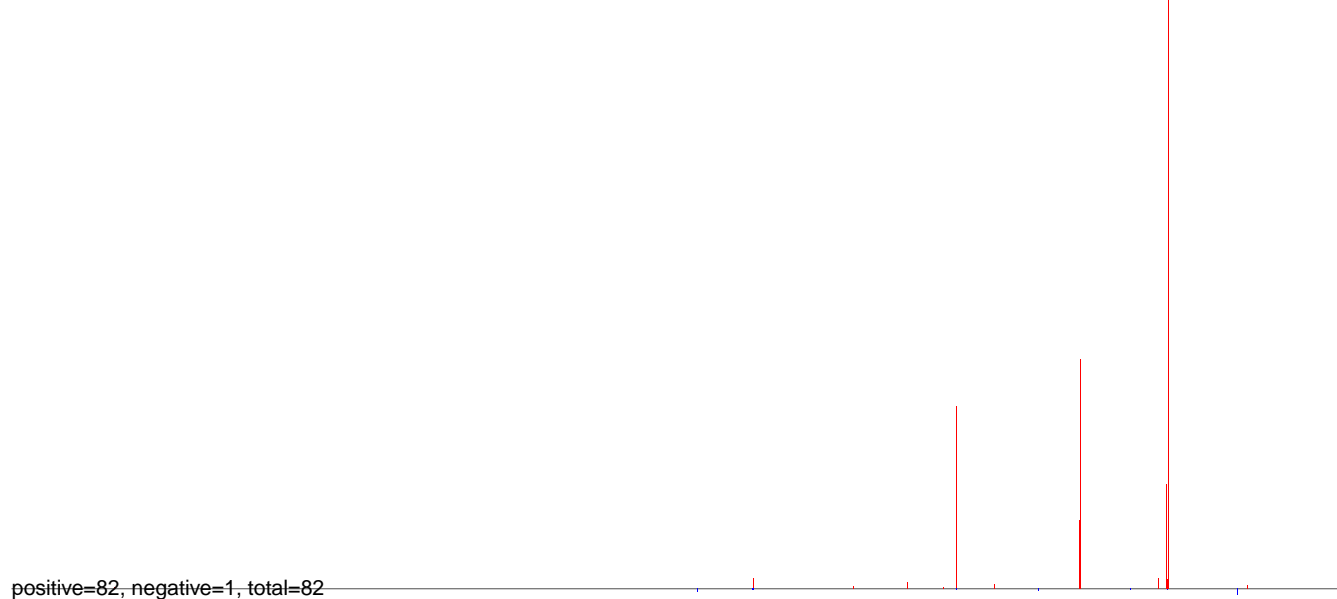
AnGam_WholeFemale_BF_IB.24_35.rep



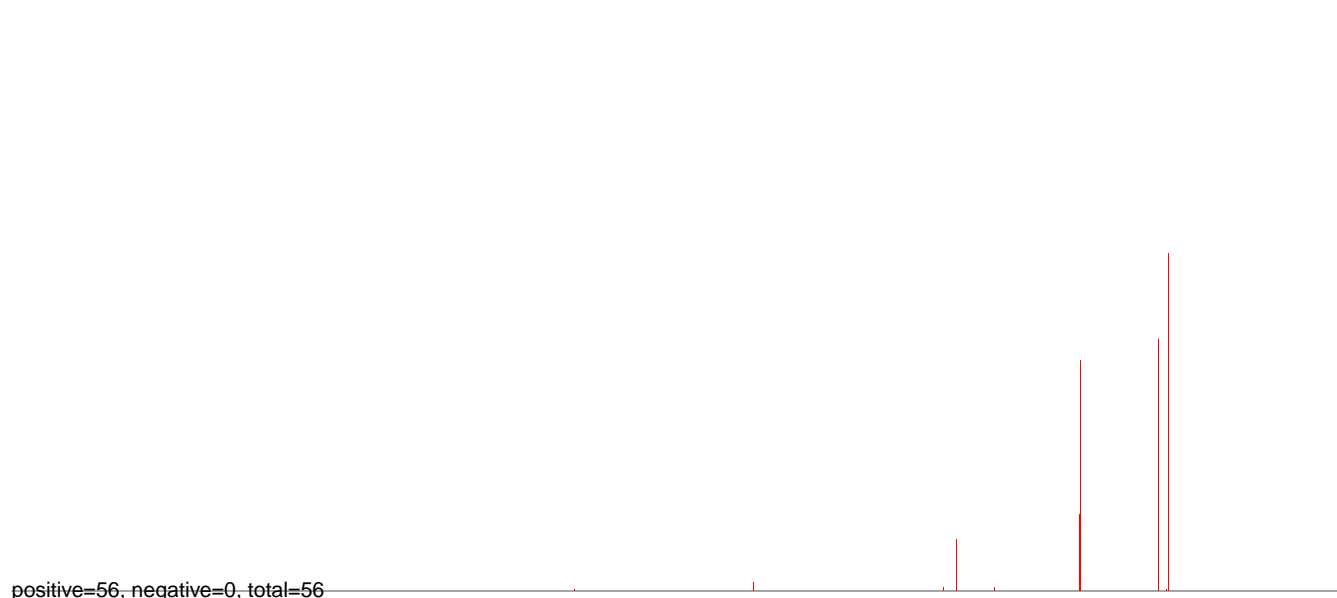
AnGam_WholeFemale_BF_IB.rep



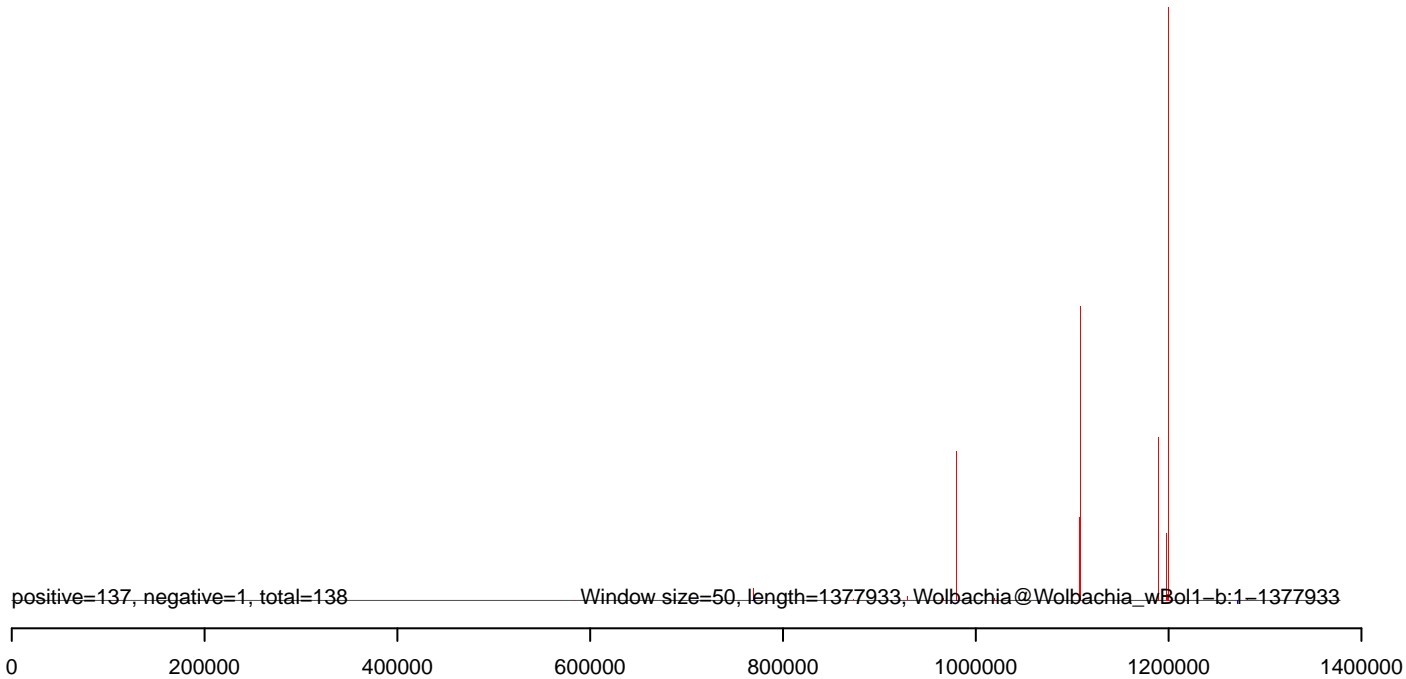
AnGam_WholeFemale_BF_IB.18_23.rep



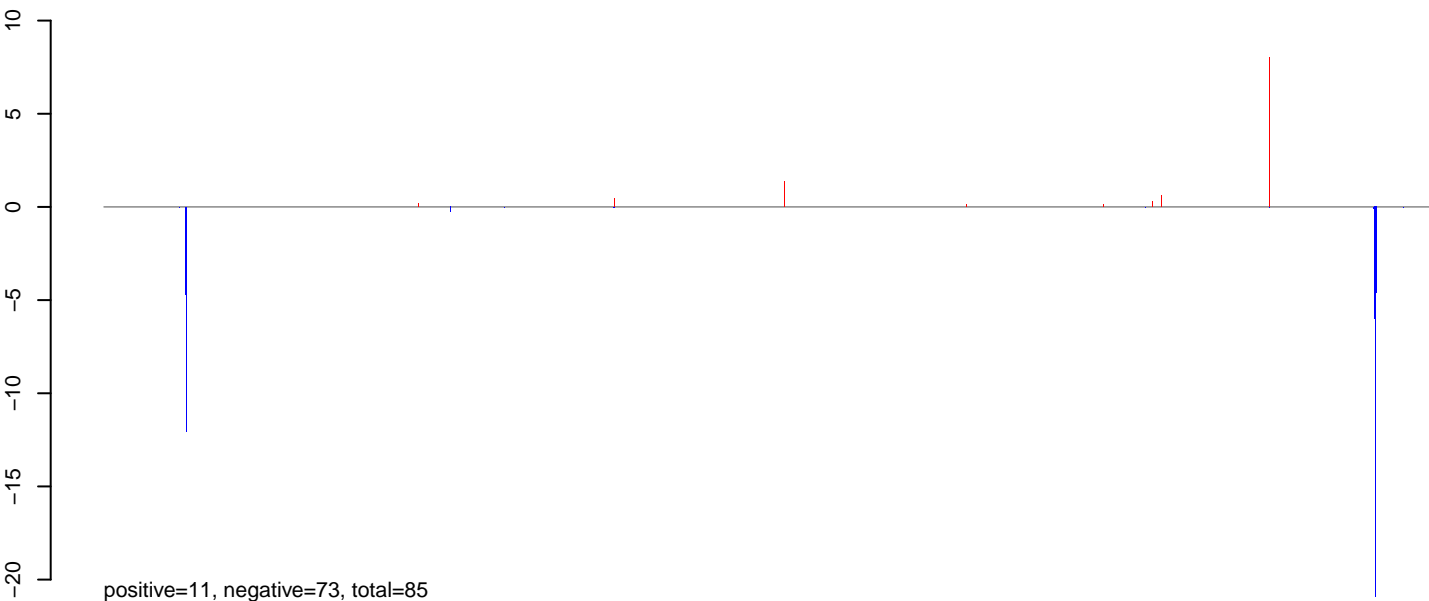
AnGam_WholeFemale_BF_IB.24_35.rep



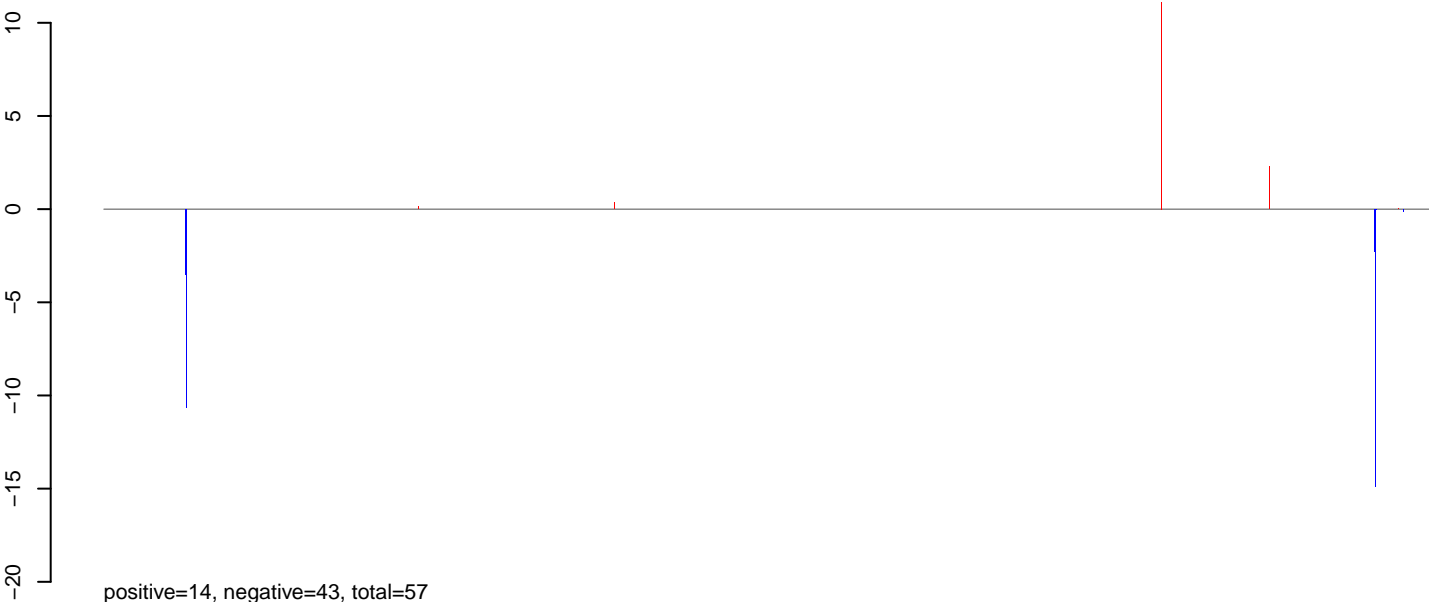
AnGam_WholeFemale_BF_IB.rep



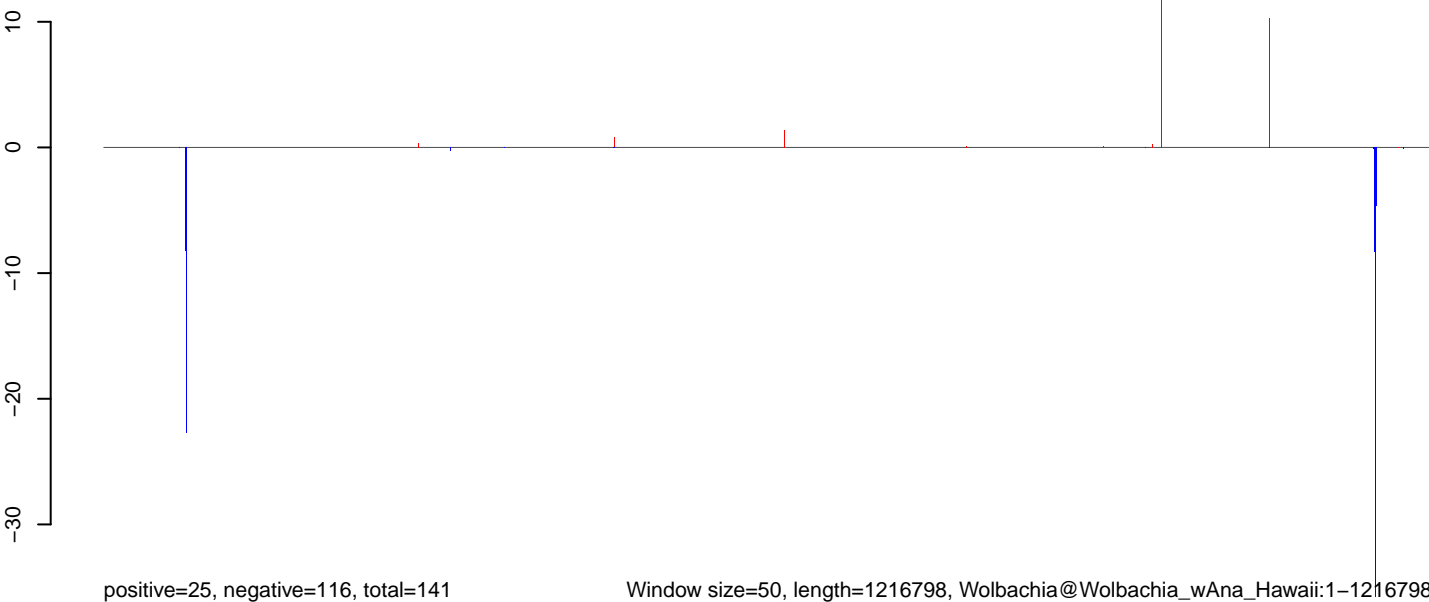
AnGam_WholeFemale_BF_IB.18_23.rep



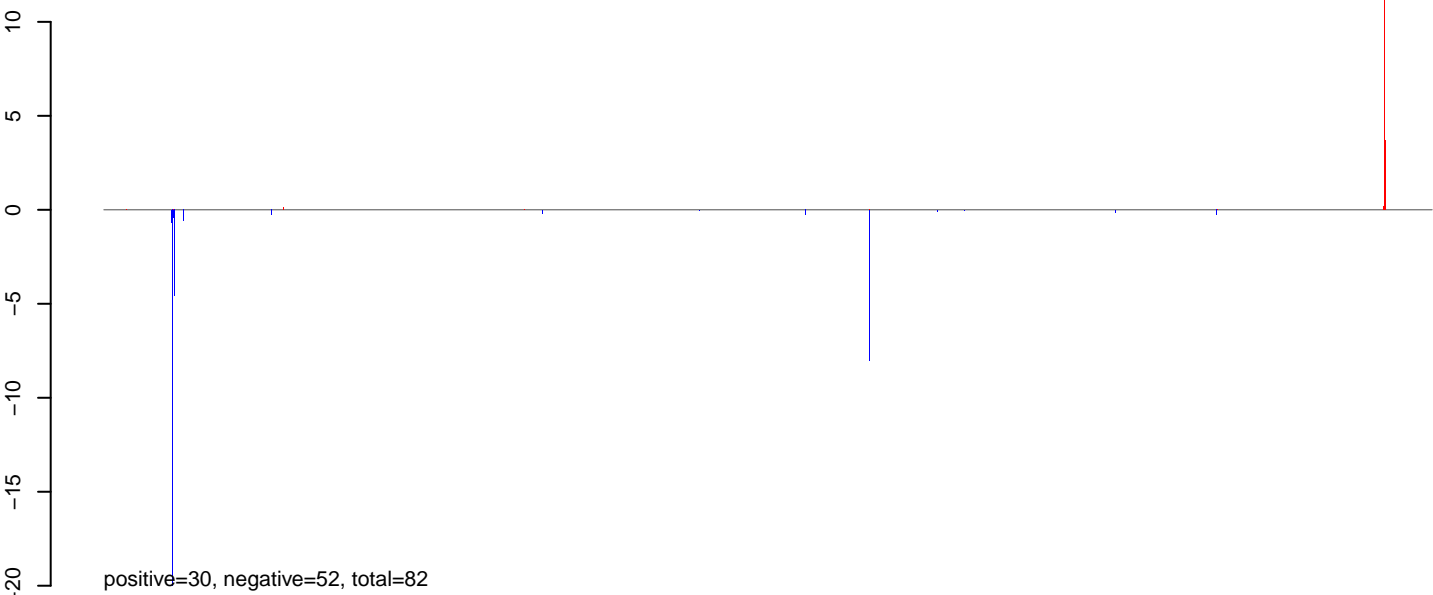
AnGam_WholeFemale_BF_IB.24_35.rep



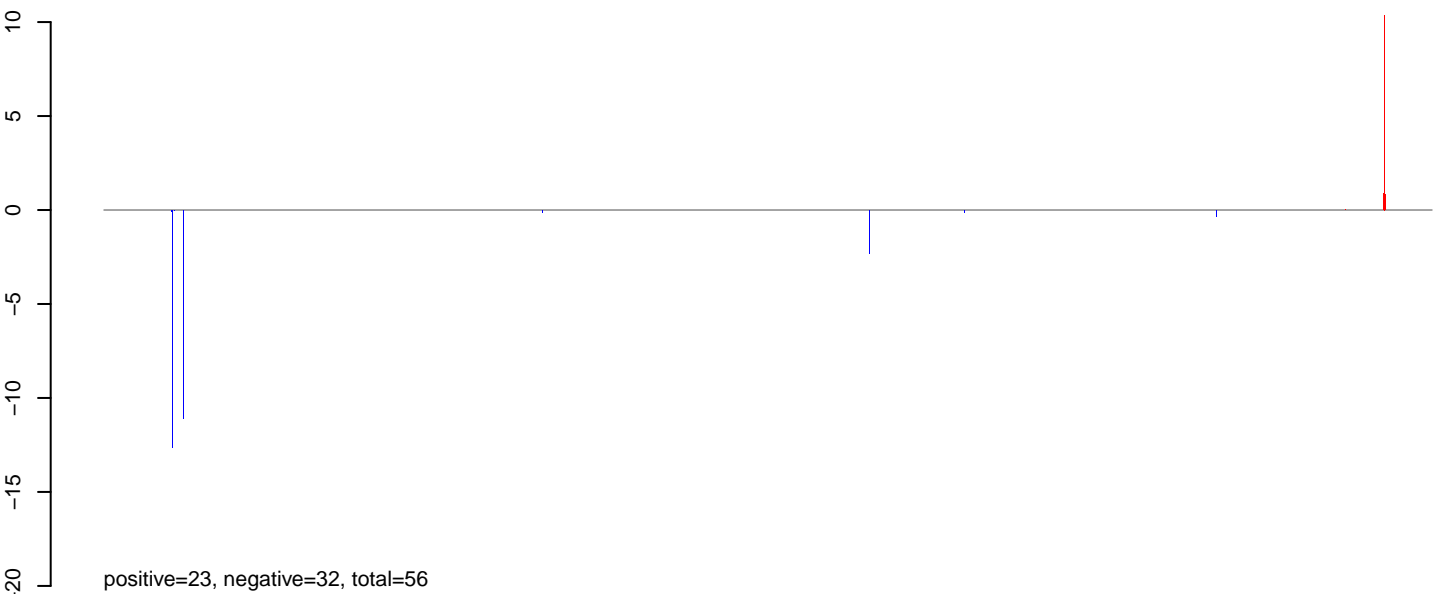
AnGam_WholeFemale_BF_IB.rep



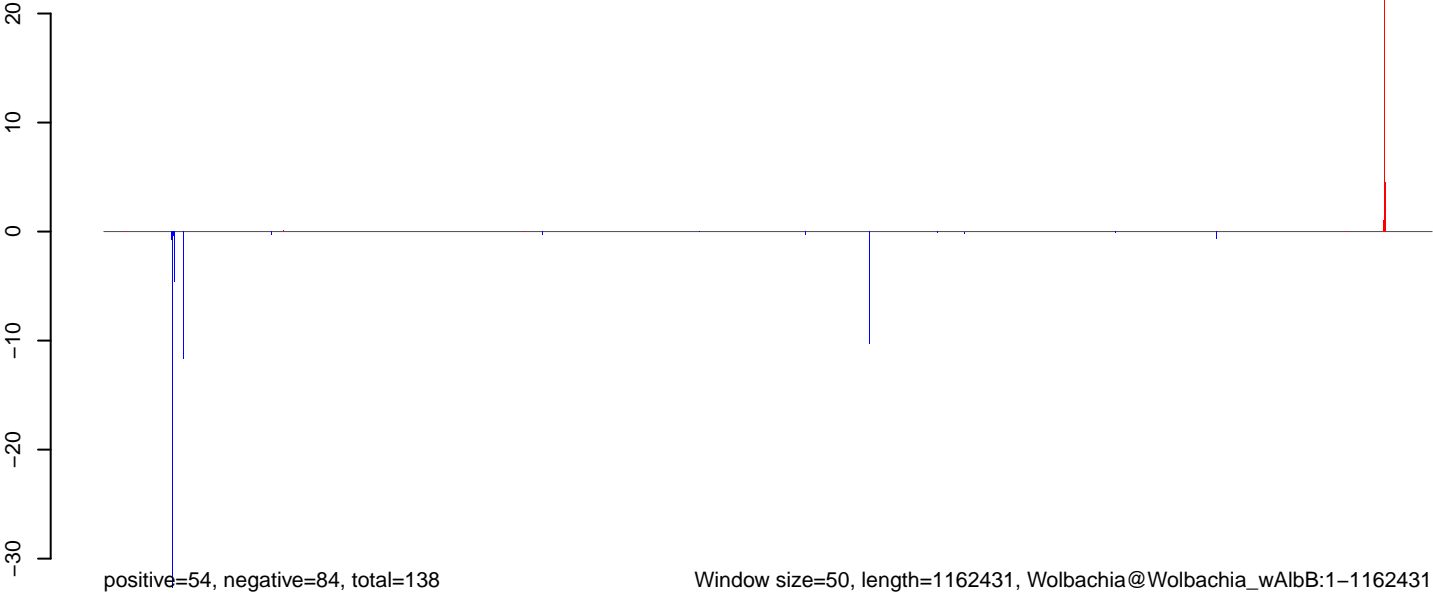
AnGam_WholeFemale_BF_IB.18_23.rep



AnGam_WholeFemale_BF_IB.24_35.rep

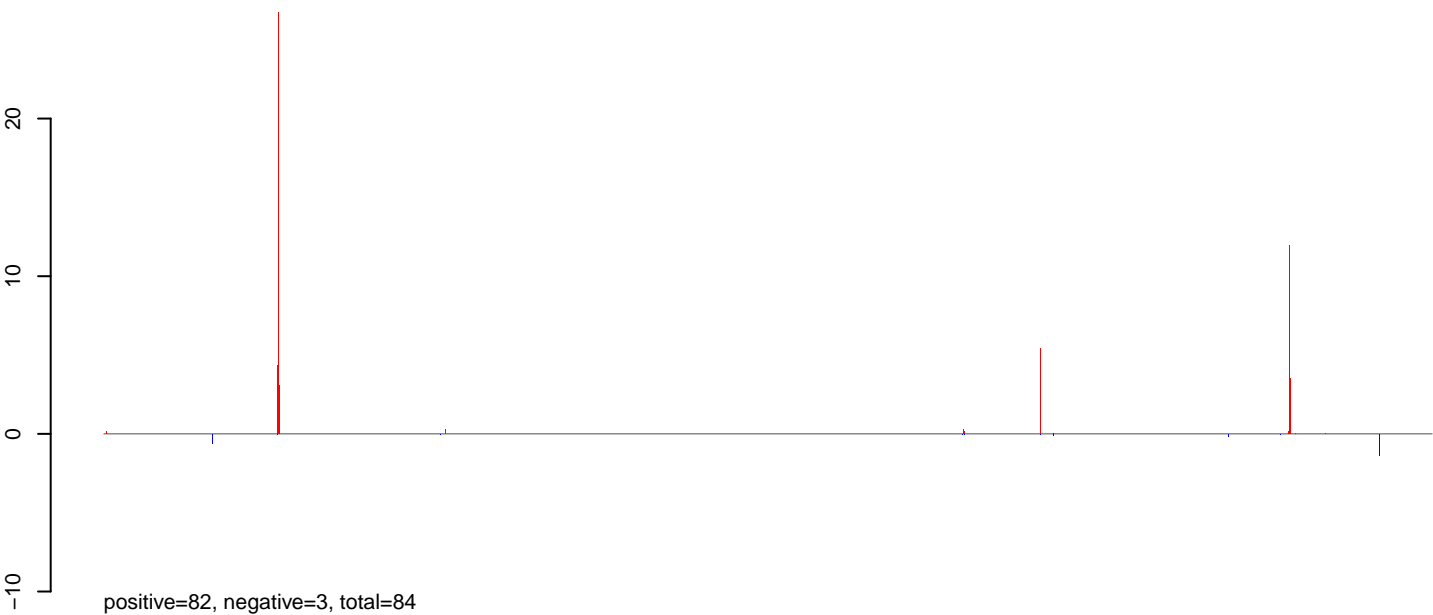


AnGam_WholeFemale_BF_IB.rep

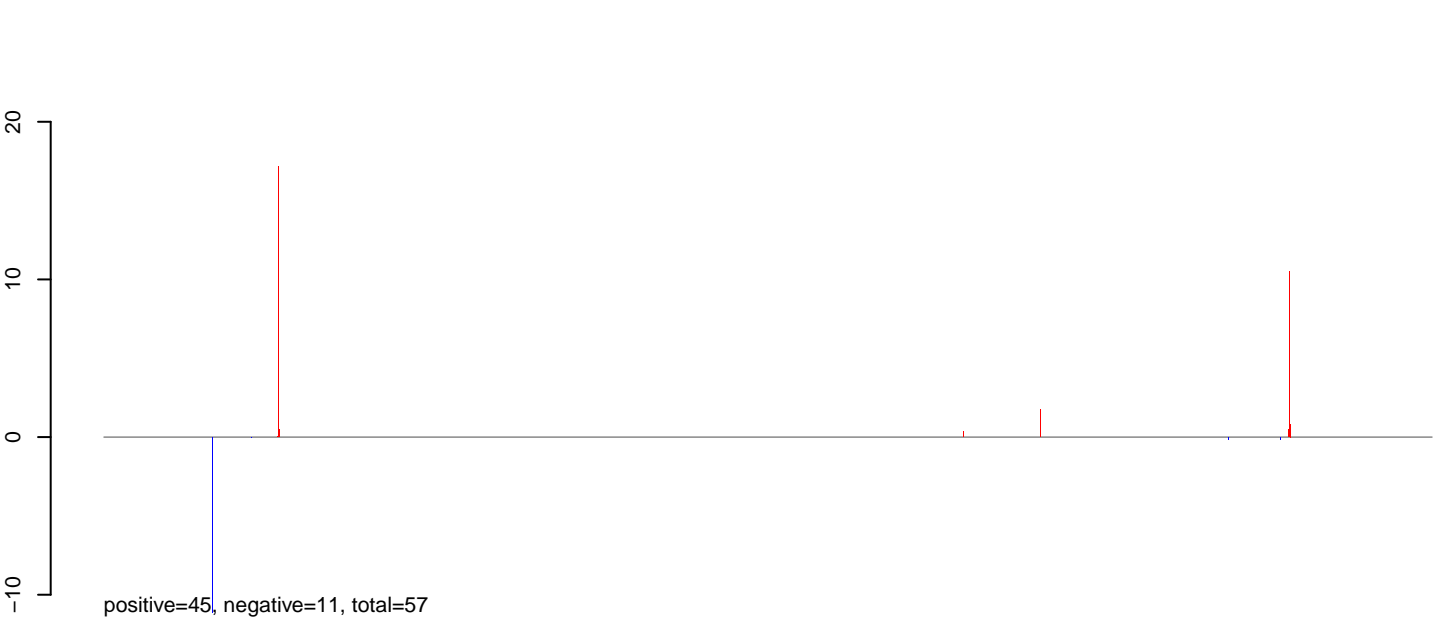


0 200000 400000 600000 800000 1000000 1200000

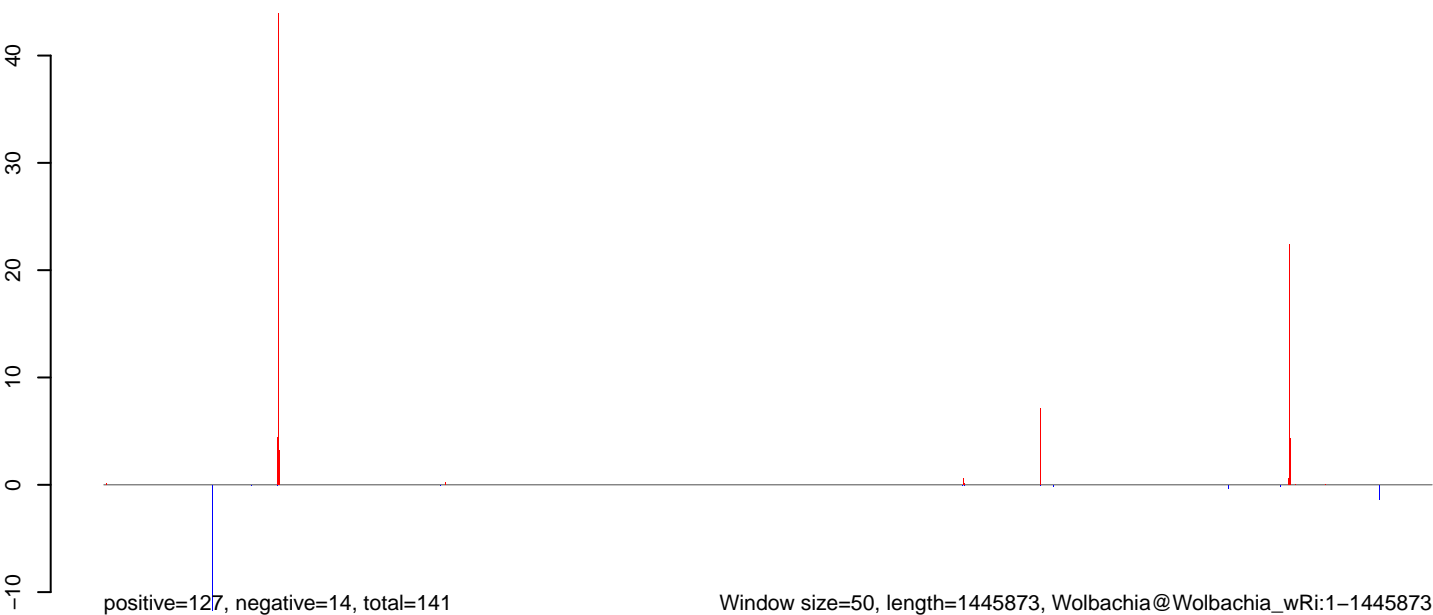
AnGam_WholeFemale_BF_IB.18_23.rep



AnGam_WholeFemale_BF_IB.24_35.rep



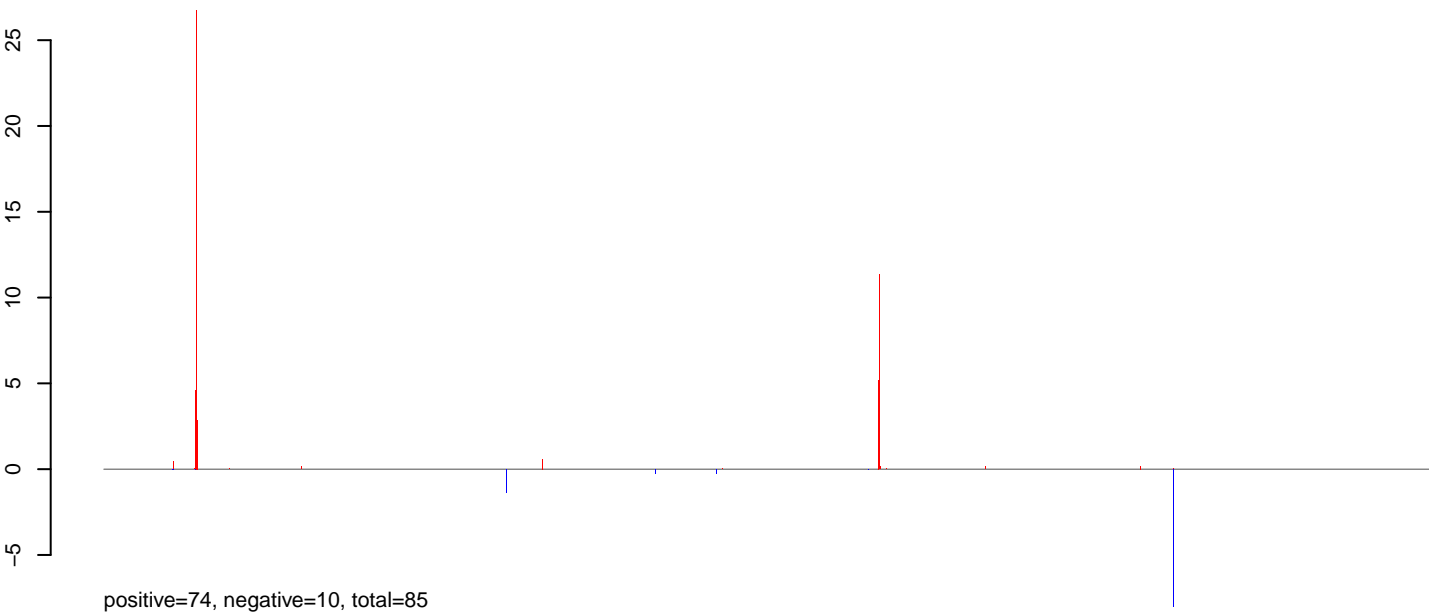
AnGam_WholeFemale_BF_IB.rep



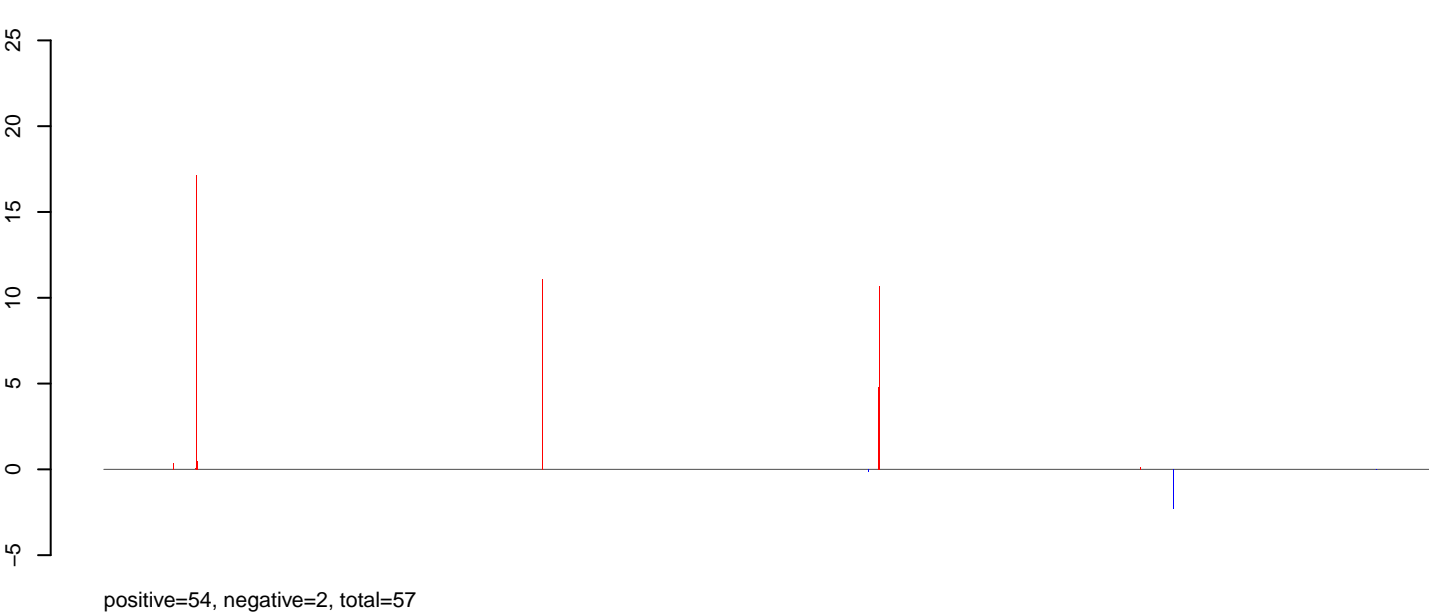
Window size=50, length=1445873, Wolbachia@Wolbachia_wRi:1-1445873

0 500000 1000000 1500000

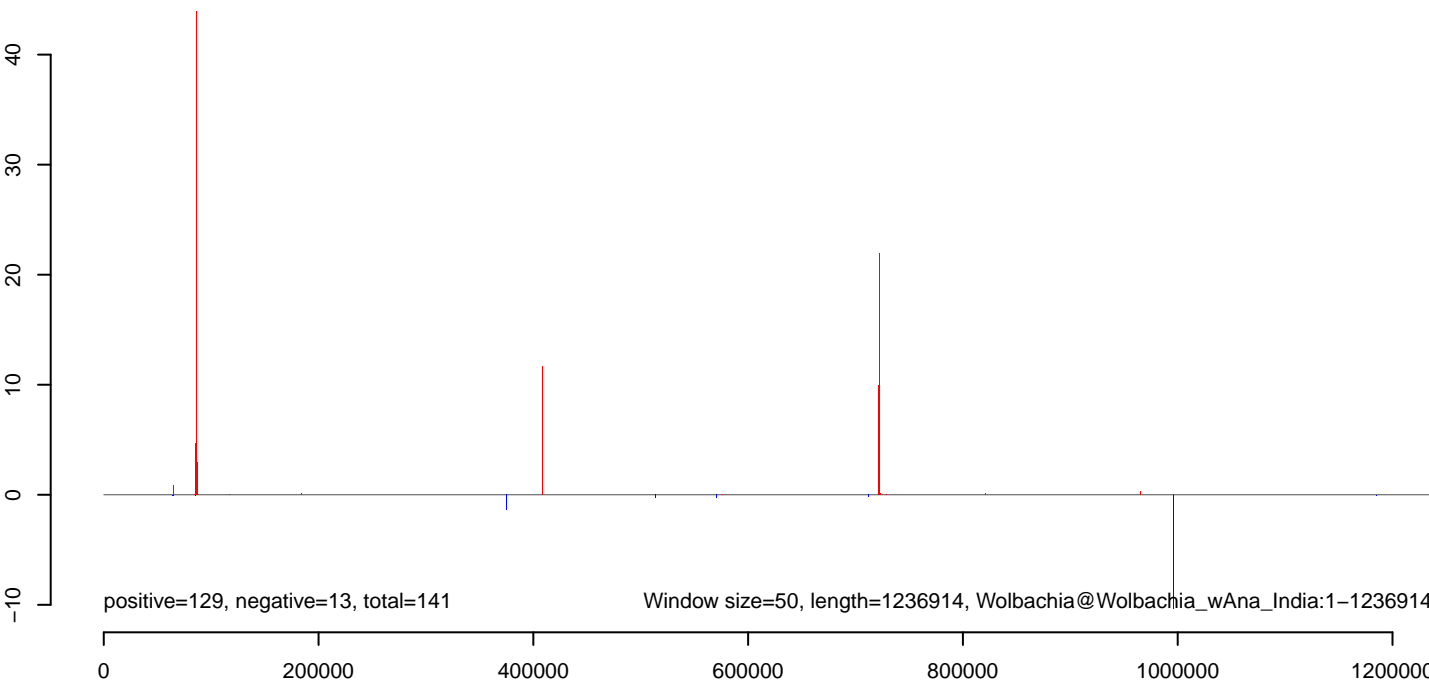
AnGam_WholeFemale_BF_IB.18_23.rep



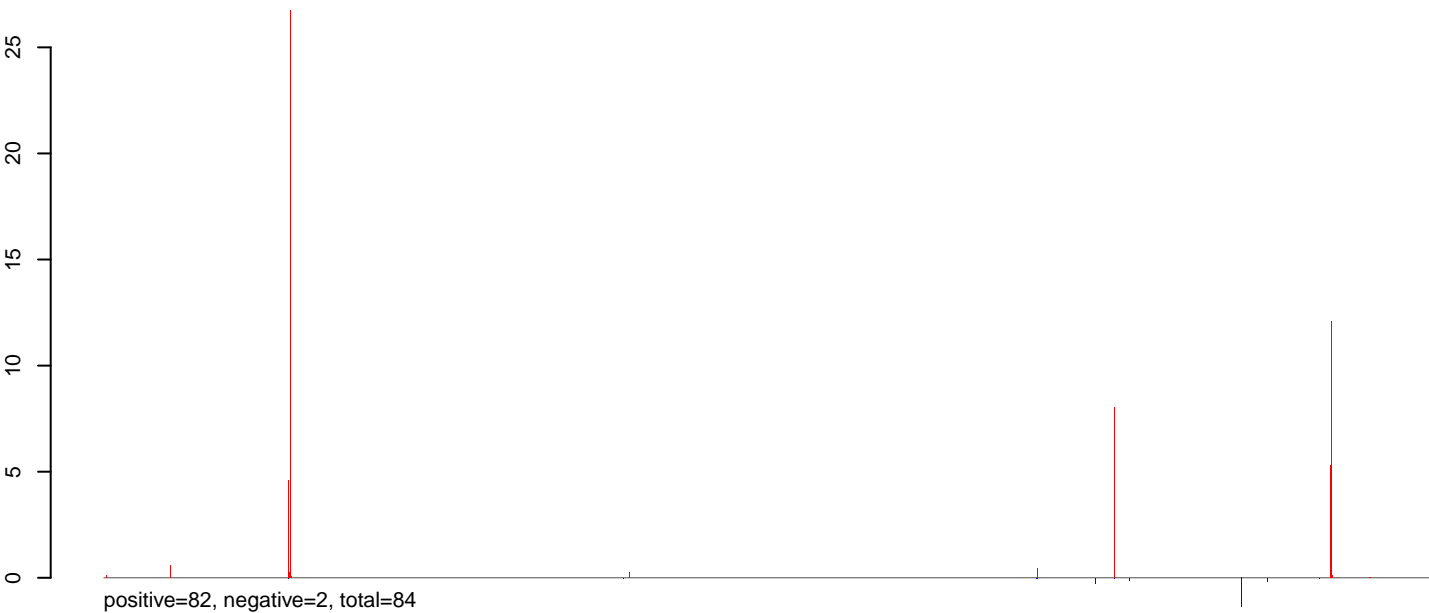
AnGam_WholeFemale_BF_IB.24_35.rep



AnGam_WholeFemale_BF_IB.rep



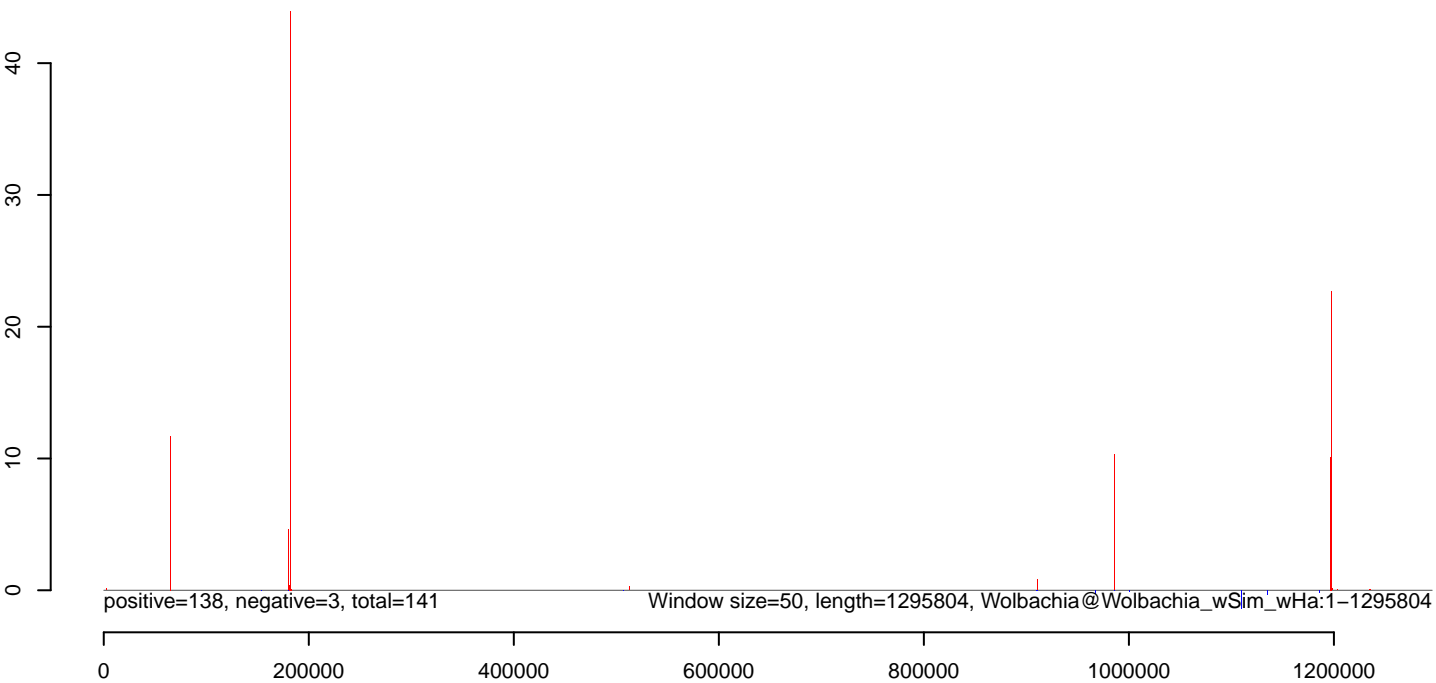
AnGam_WholeFemale_BF_IB.18_23.rep



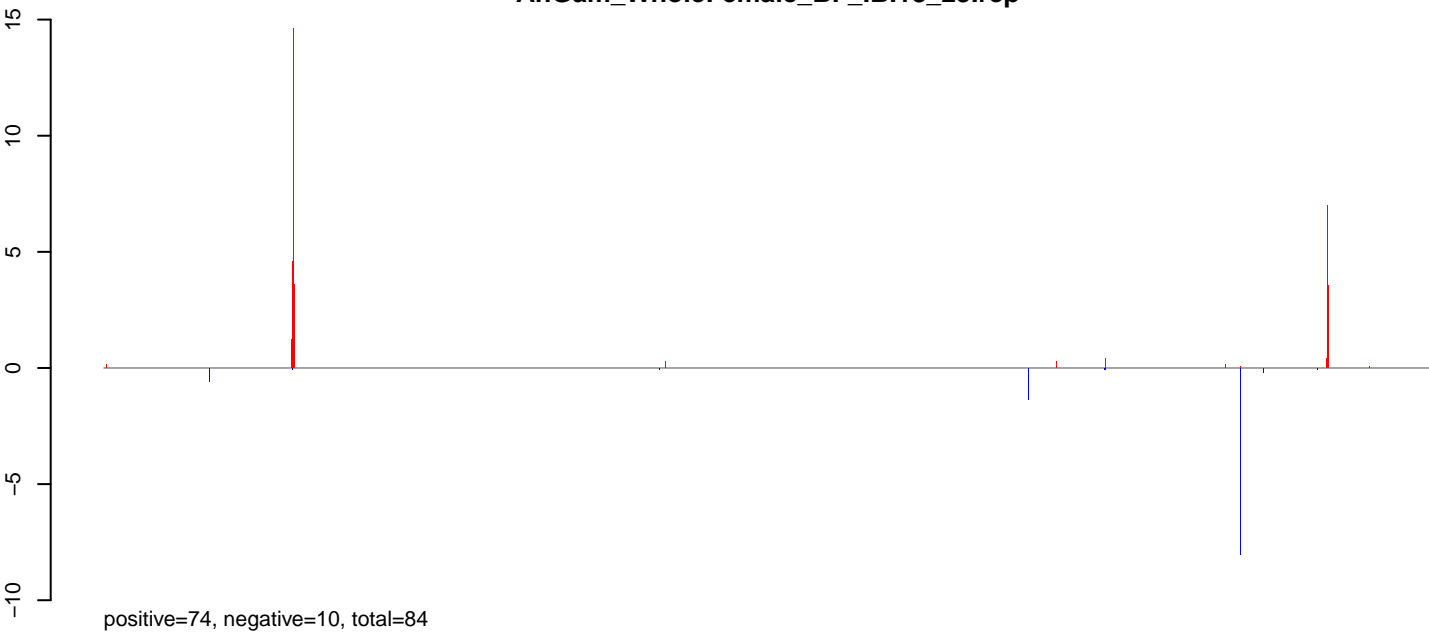
AnGam_WholeFemale_BF_IB.24_35.rep



AnGam_WholeFemale_BF_IB.rep



AnGam_WholeFemale_BF_IB.18_23.rep



AnGam_WholeFemale_BF_IB.24_35.rep

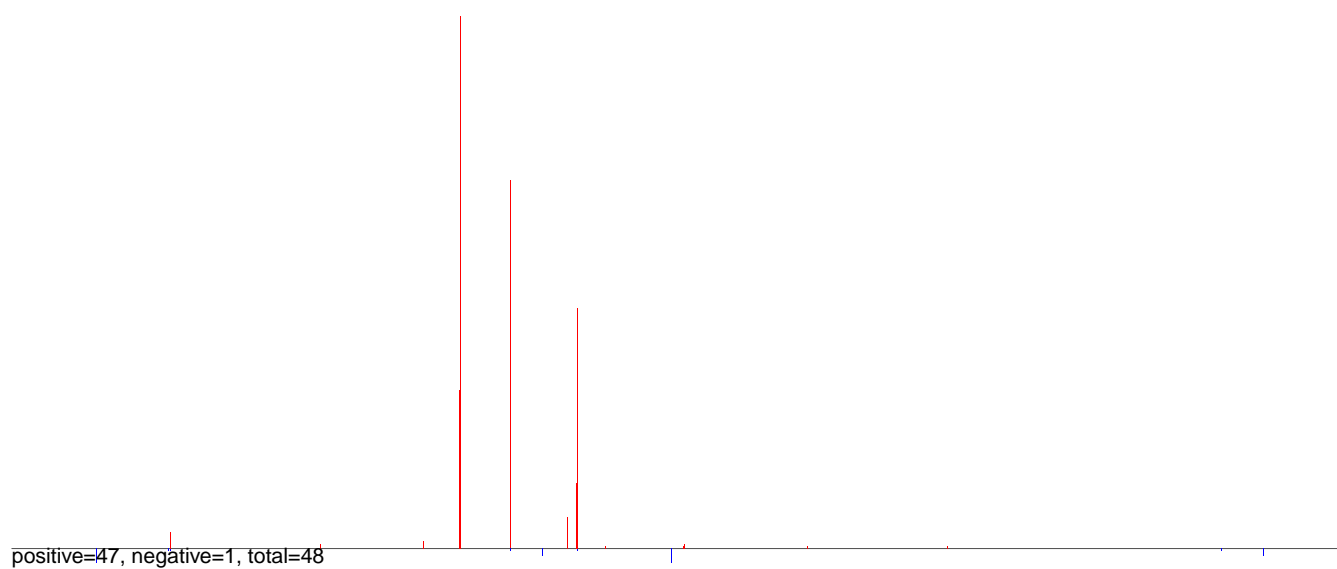


AnGam_WholeFemale_BF_IB.rep

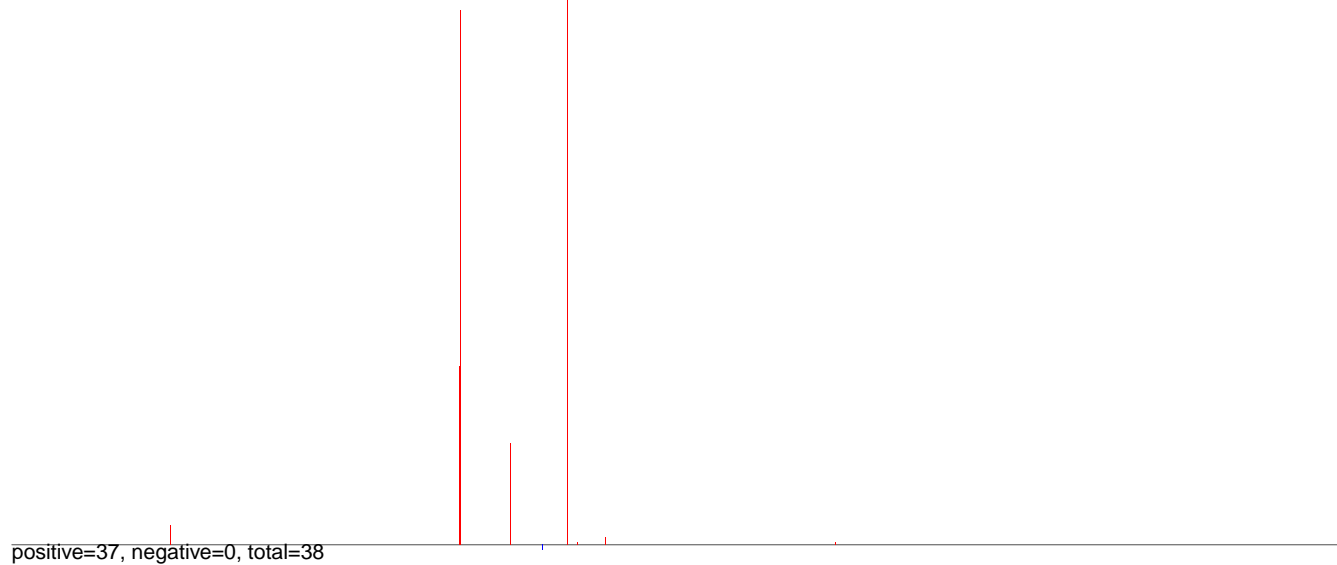


0 200000 400000 600000 800000 1000000 1200000

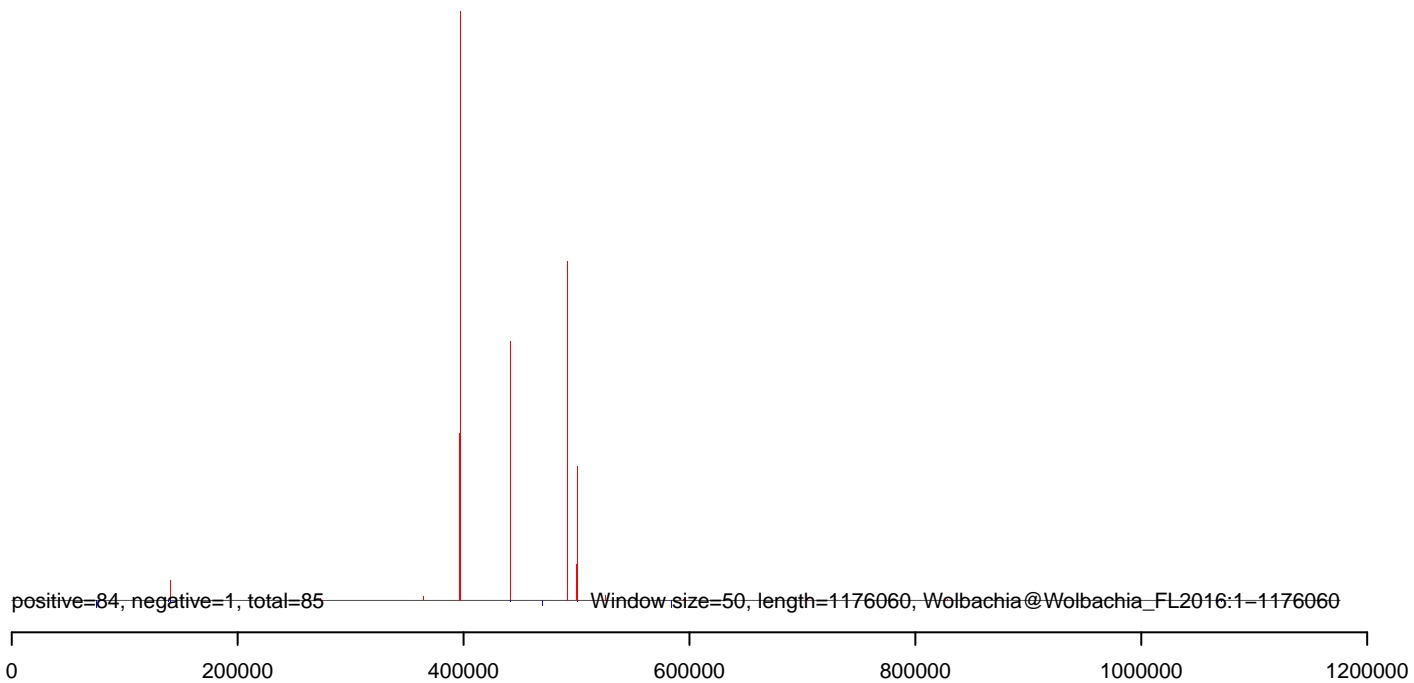
AnGam_WholeFemale_BF_IB.18_23.rep



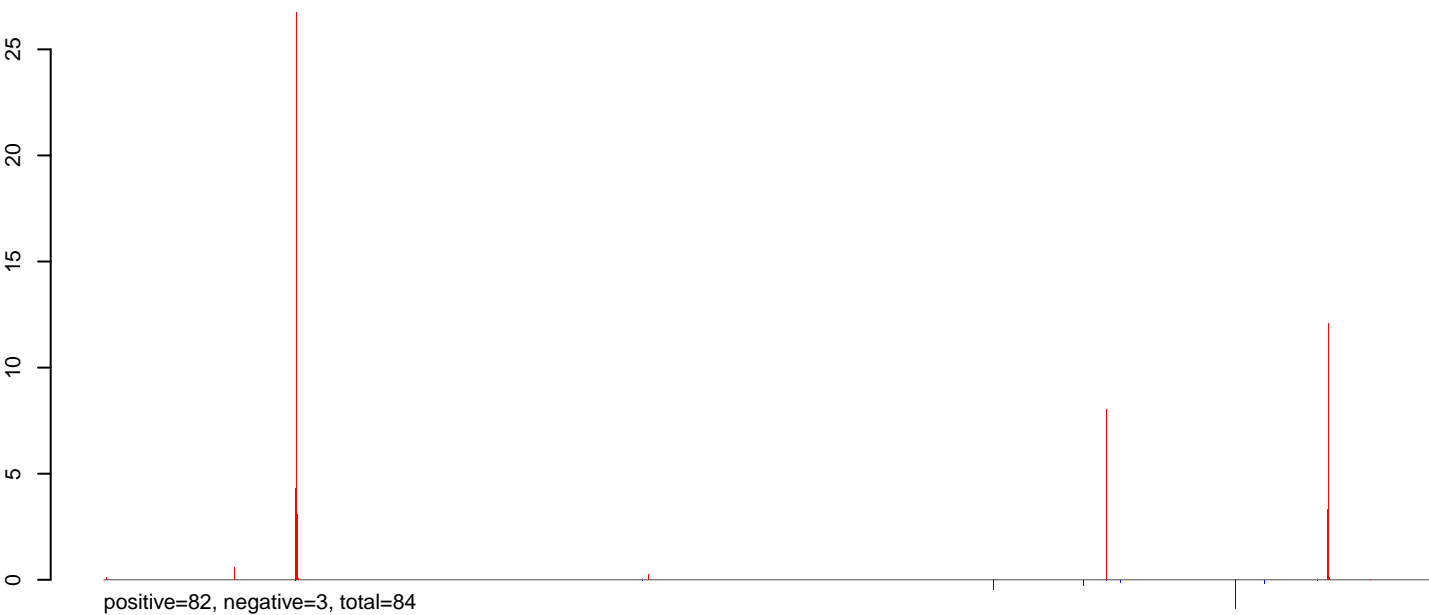
AnGam_WholeFemale_BF_IB.24_35.rep



AnGam_WholeFemale_BF_IB.rep



AnGam_WholeFemale_BF_IB.18_23.rep



AnGam_WholeFemale_BF_IB.24_35.rep



AnGam_WholeFemale_BF_IB.rep

