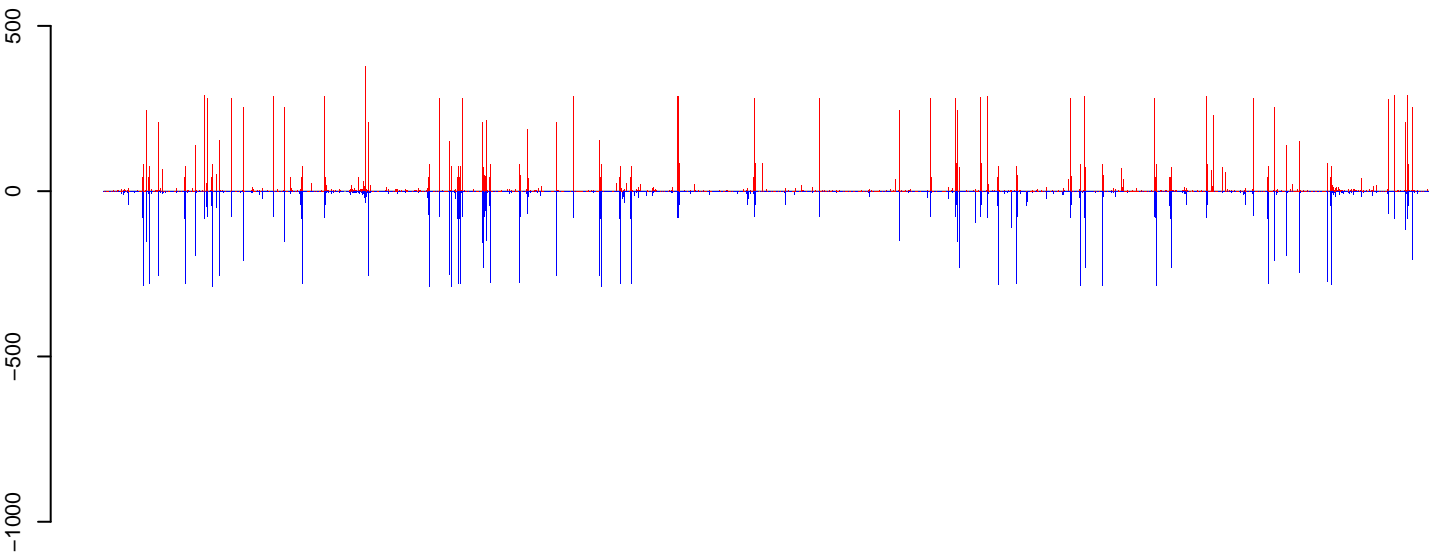
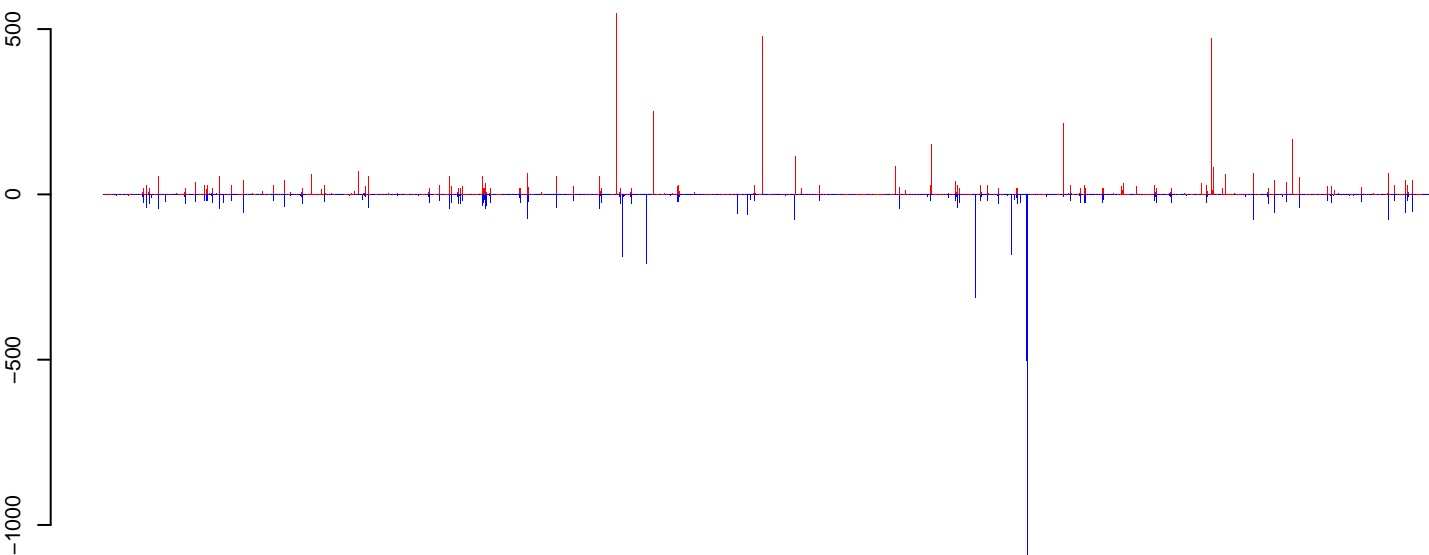


CuQuin\_Ovary\_NL.18\_23.rep



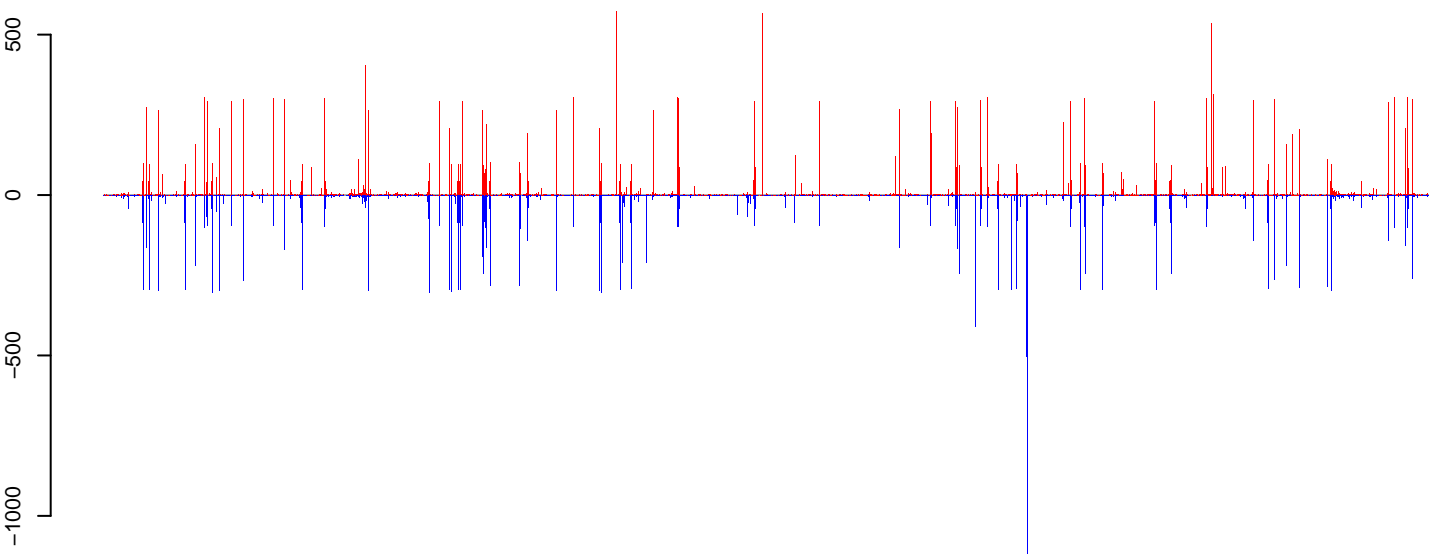
positive=37955, negative=37619, total=75574

CuQuin\_Ovary\_NL.24\_35.rep



positive=11231, negative=10805, total=22036

CuQuin\_Ovary\_NL.rep



positive=49186, negative=48424, total=97610

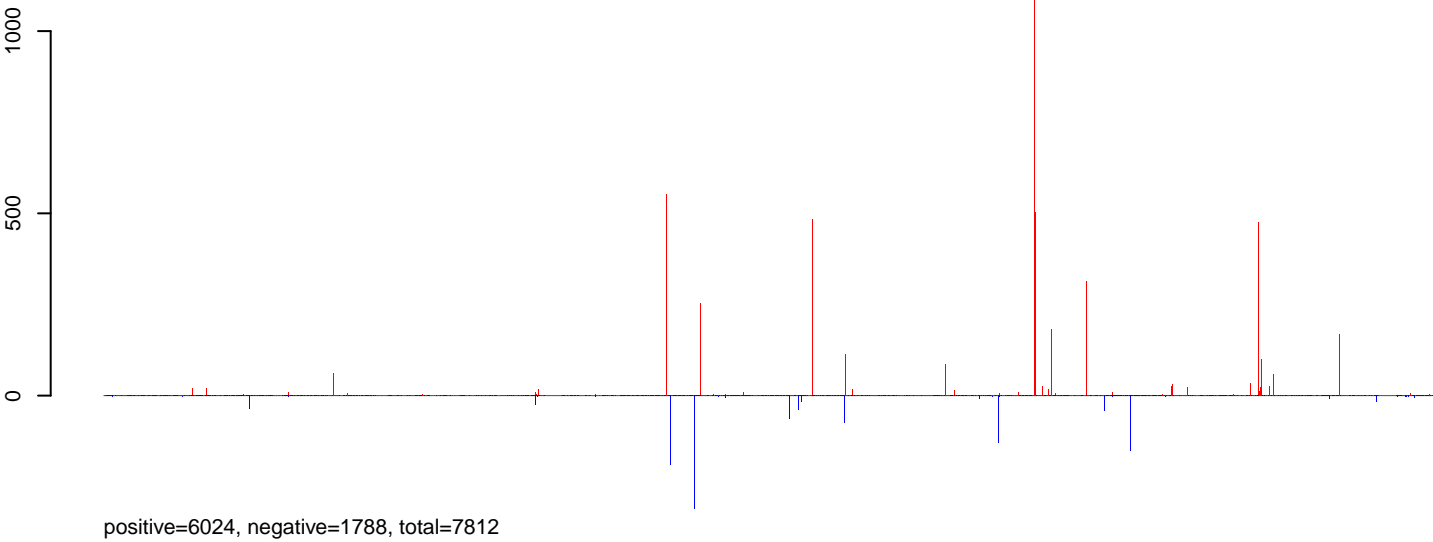
Window size=25, length=1482455, Wolbachia@Wolbachia\_wPip:1-1482455

0 500000 1000000 1500000

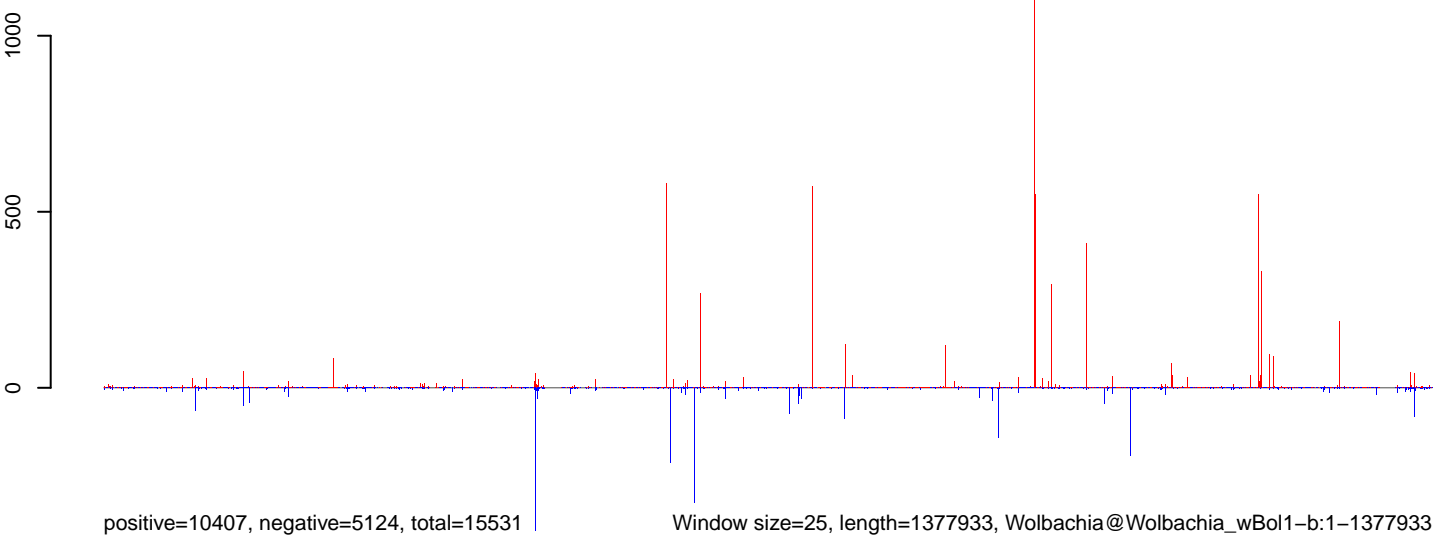
CuQuin\_Ovary\_NL.18\_23.rep



CuQuin\_Ovary\_NL.24\_35.rep

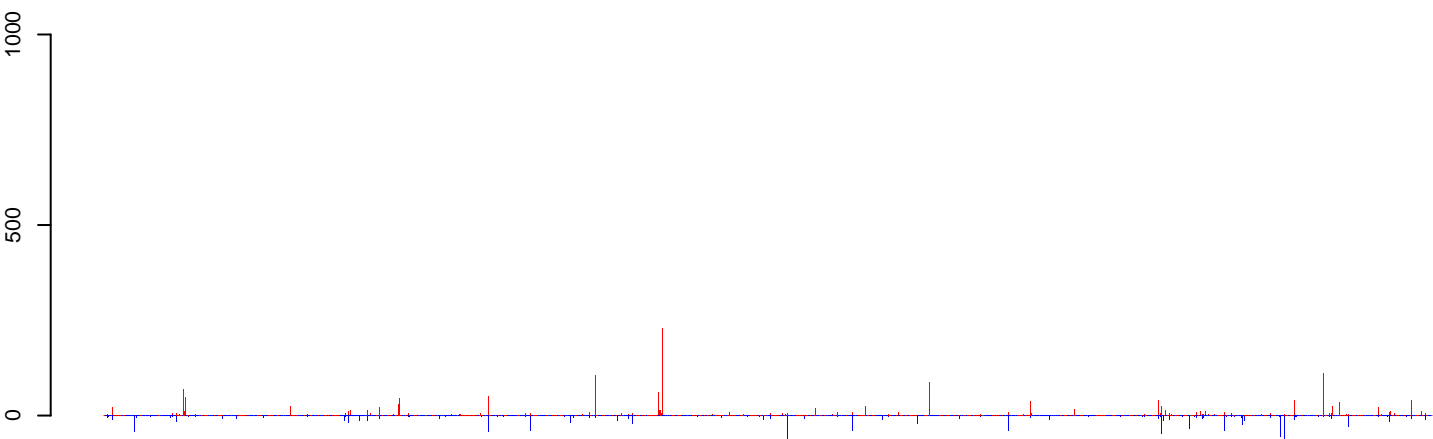


CuQuin\_Ovary\_NL.rep



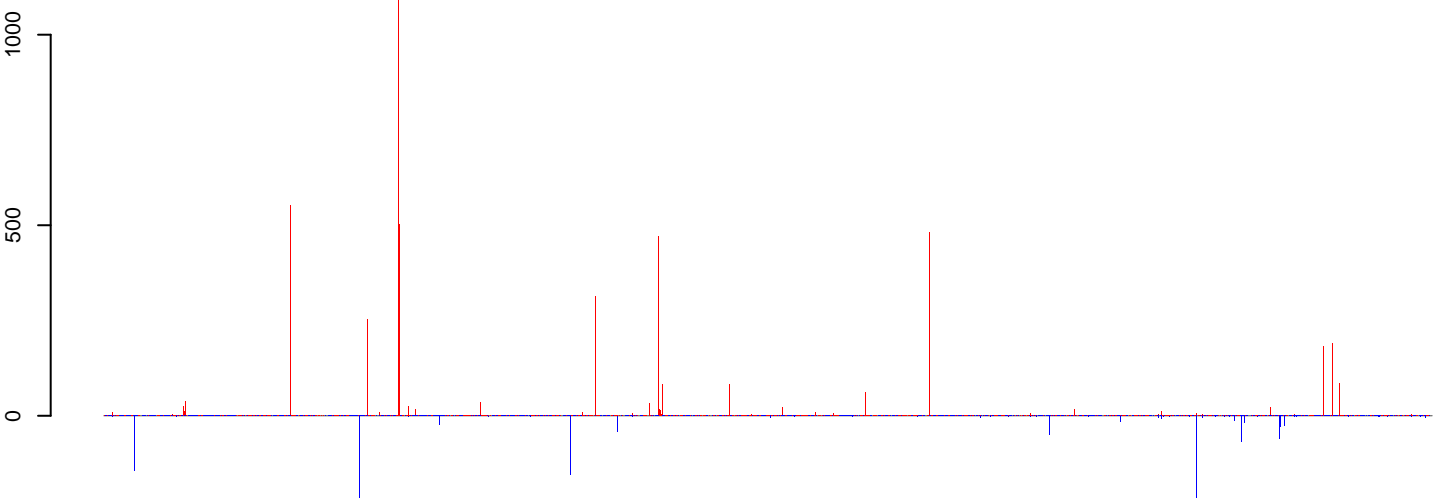
0 200000 400000 600000 800000 1000000 1200000 1400000

CuQuin\_Ovary\_NL.18\_23.rep



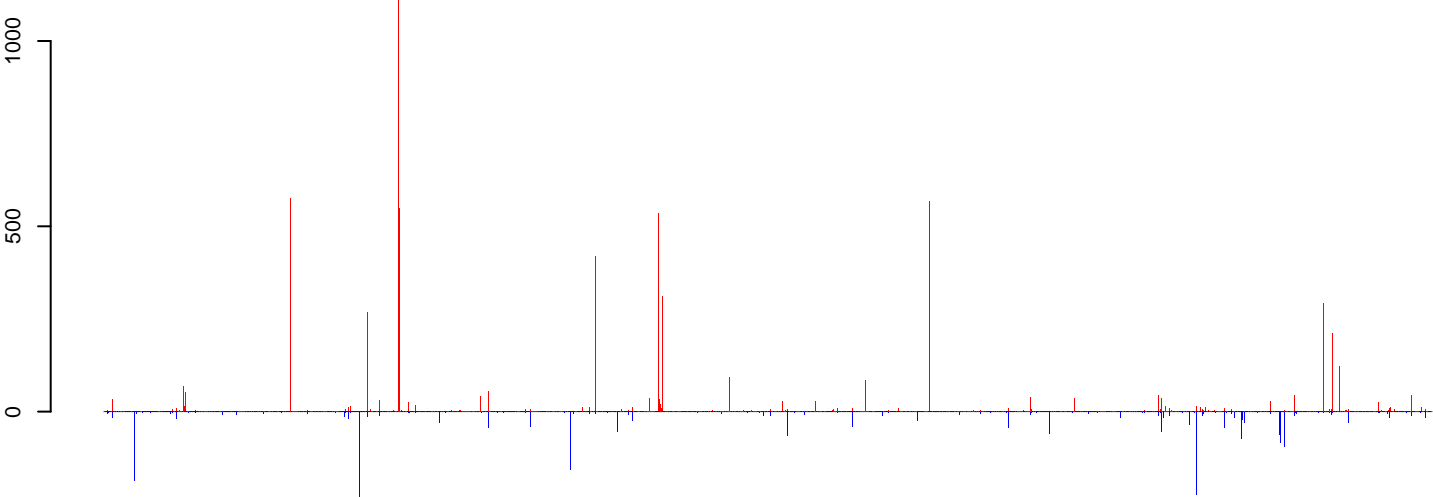
positive=3726, negative=2739, total=6465

CuQuin\_Ovary\_NL.24\_35.rep



positive=5740, negative=1710, total=7450

CuQuin\_Ovary\_NL.rep

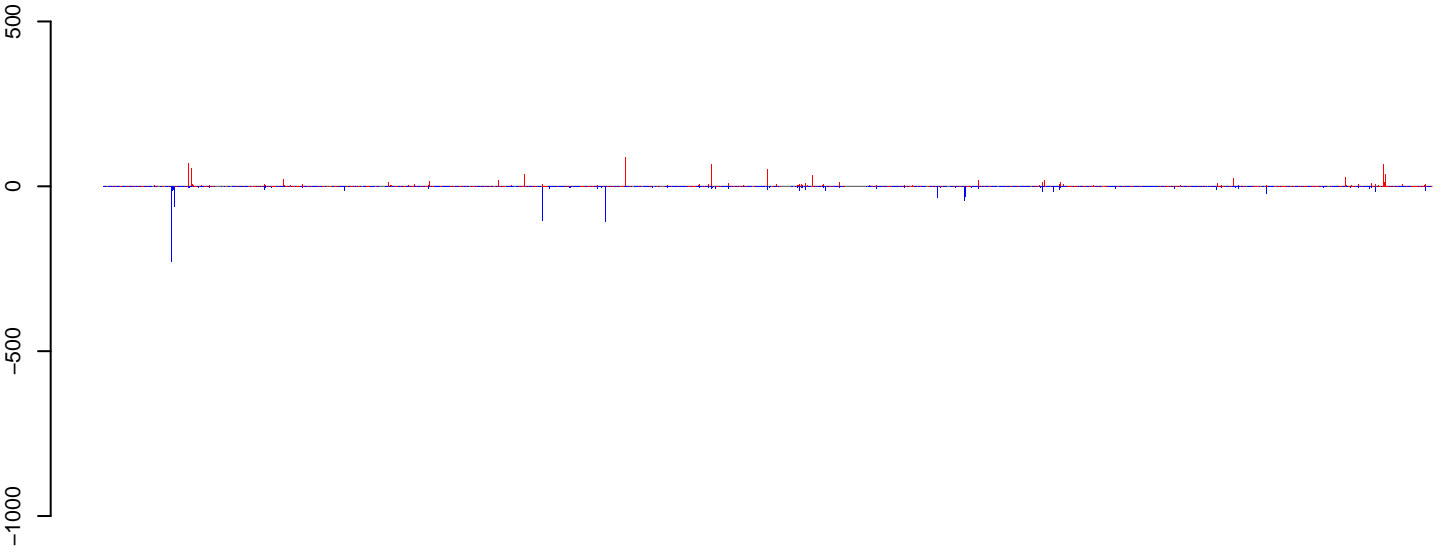


positive=9466, negative=4449, total=13915

Window size=25, length=1158805, Wolbachia@Wolbachia\_wAus:1-1158805

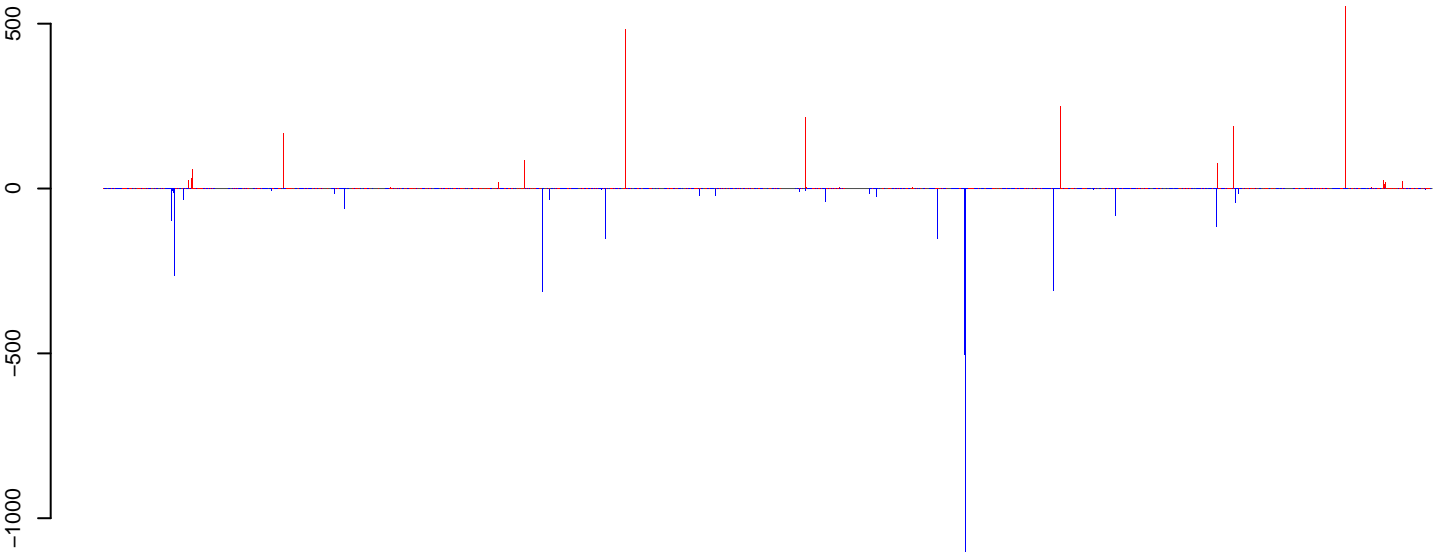
0 200000 400000 600000 800000 1000000 1200000

CuQuin\_Ovary\_NL.18\_23.rep



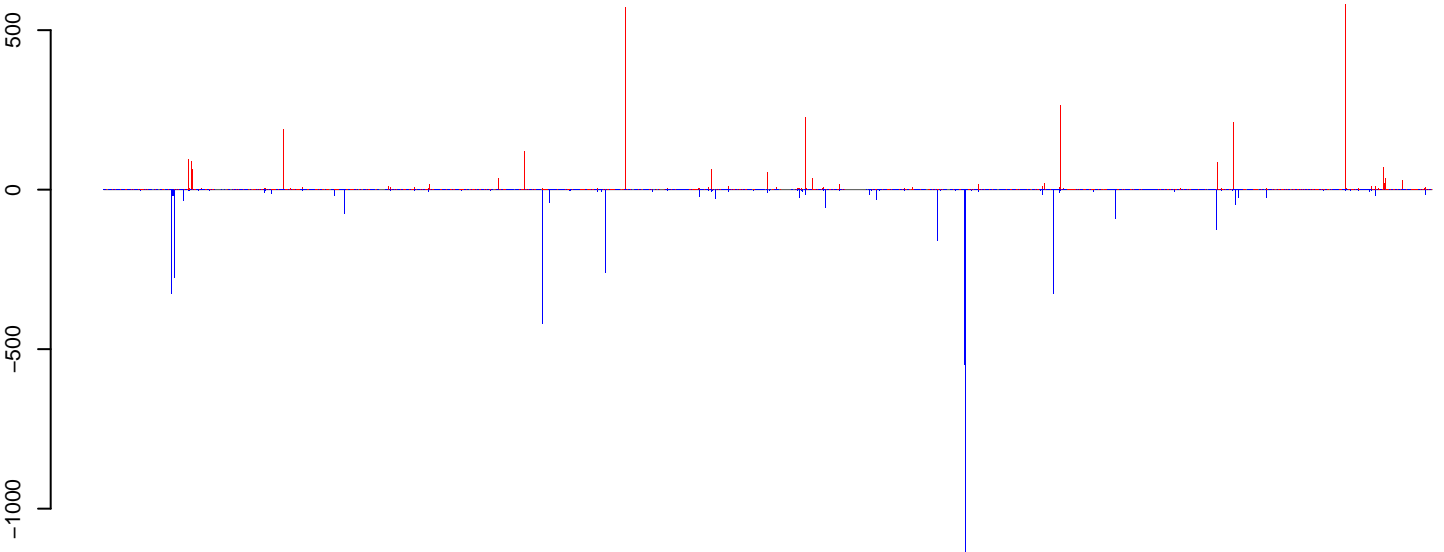
positive=2032, negative=2396, total=4429

CuQuin\_Ovary\_NL.24\_35.rep



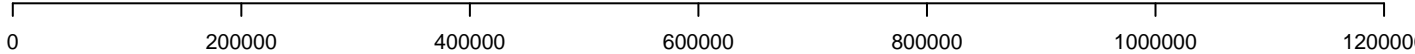
positive=2648, negative=4420, total=7068

CuQuin\_Ovary\_NL.rep

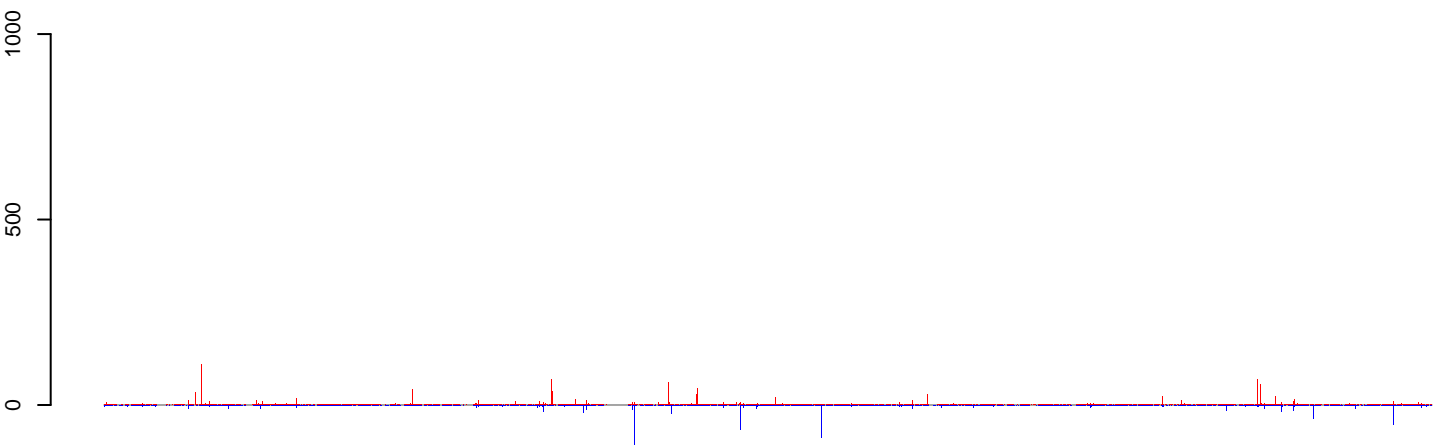


positive=4680, negative=6816, total=11497

Window size=25, length=1162431, Wolbachia@Wolbachia\_wAlbB:1-1162431

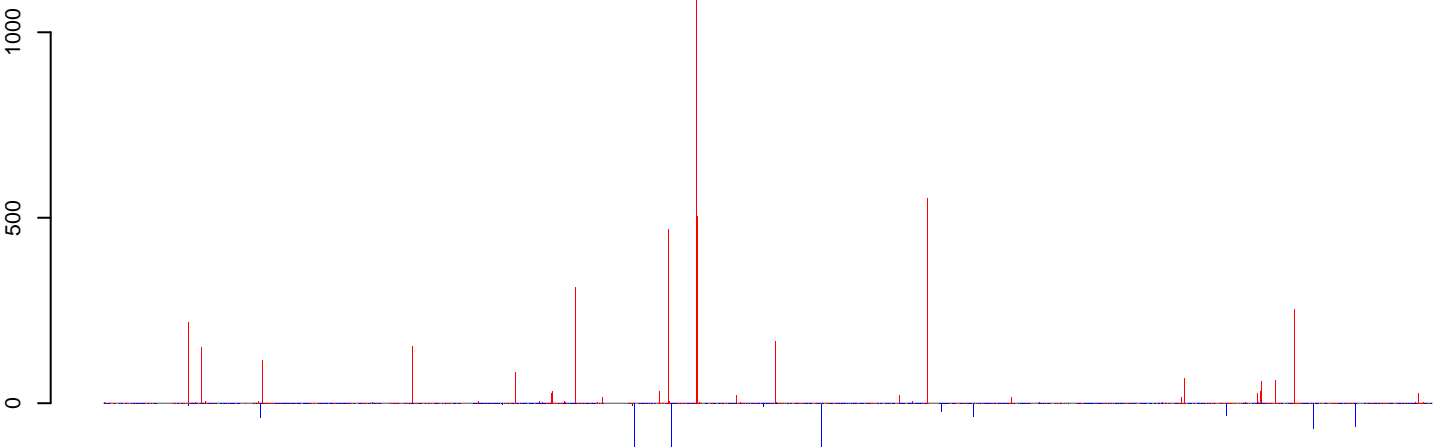


### CuQuin\_Ovary\_NL.18\_23.rep



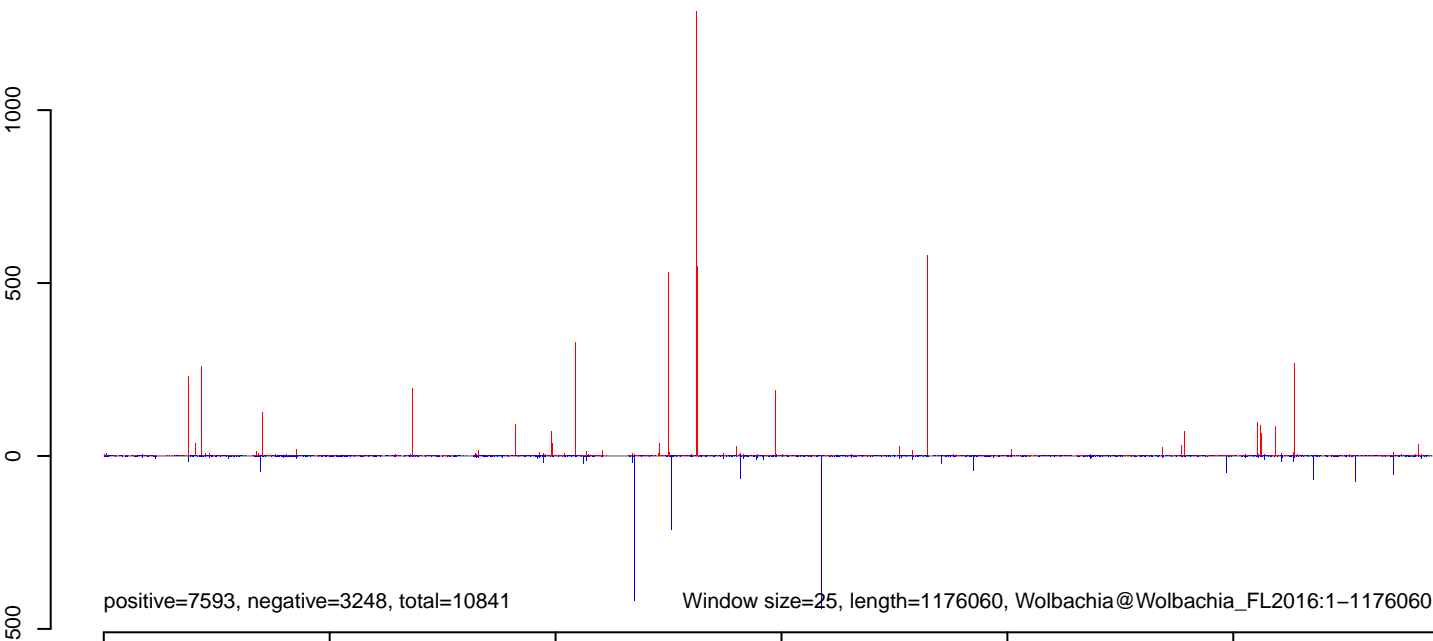
positive=2322, negative=1653, total=3975

### CuQuin\_Ovary\_NL.24\_35.rep



positive=5271, negative=1595, total=6866

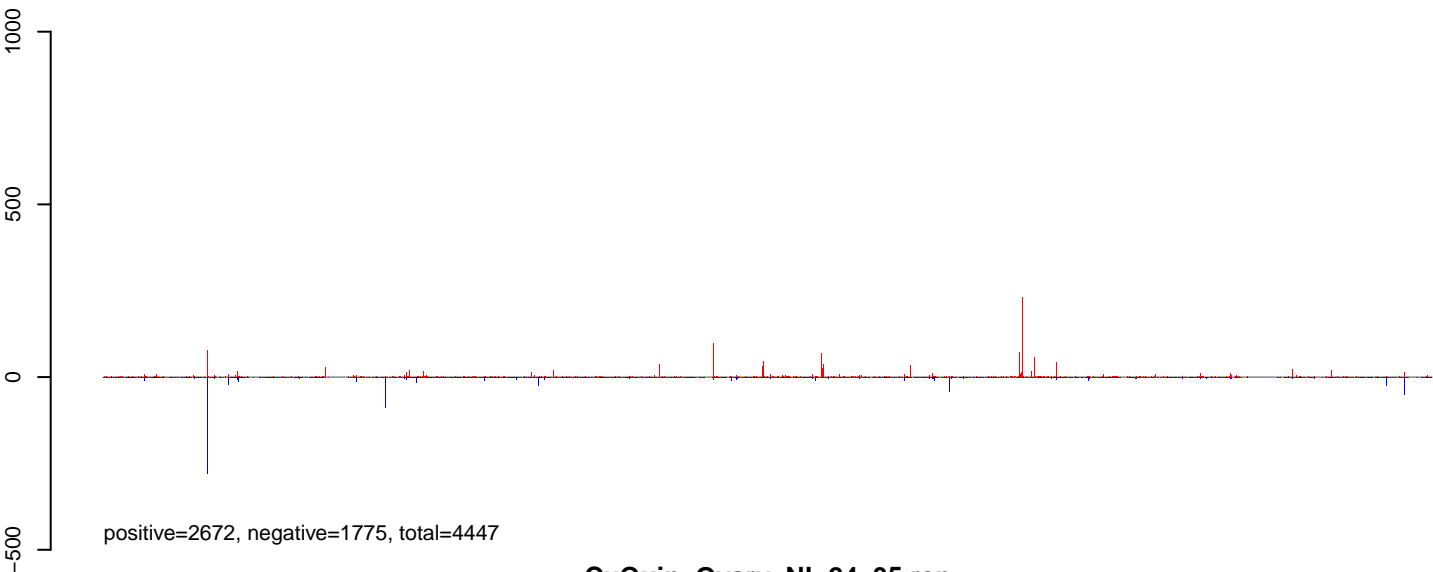
### CuQuin\_Ovary\_NL.rep



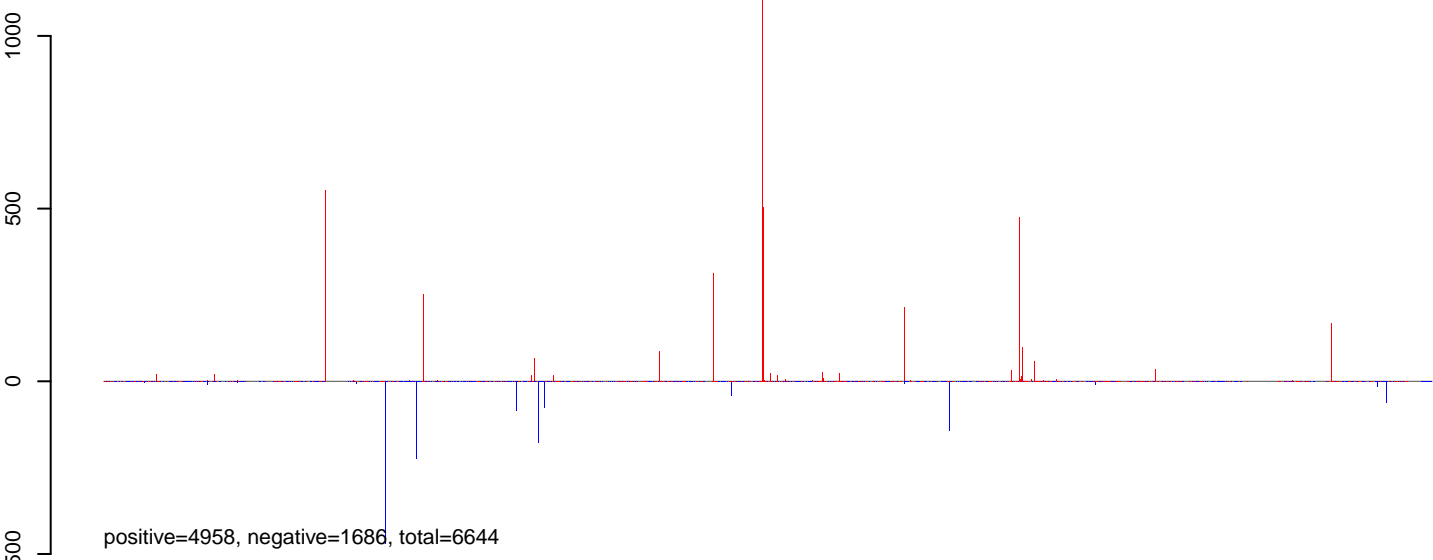
positive=7593, negative=3248, total=10841

Window size=25, length=1176060, Wolbachia@Wolbachia\_FL2016:1-1176060

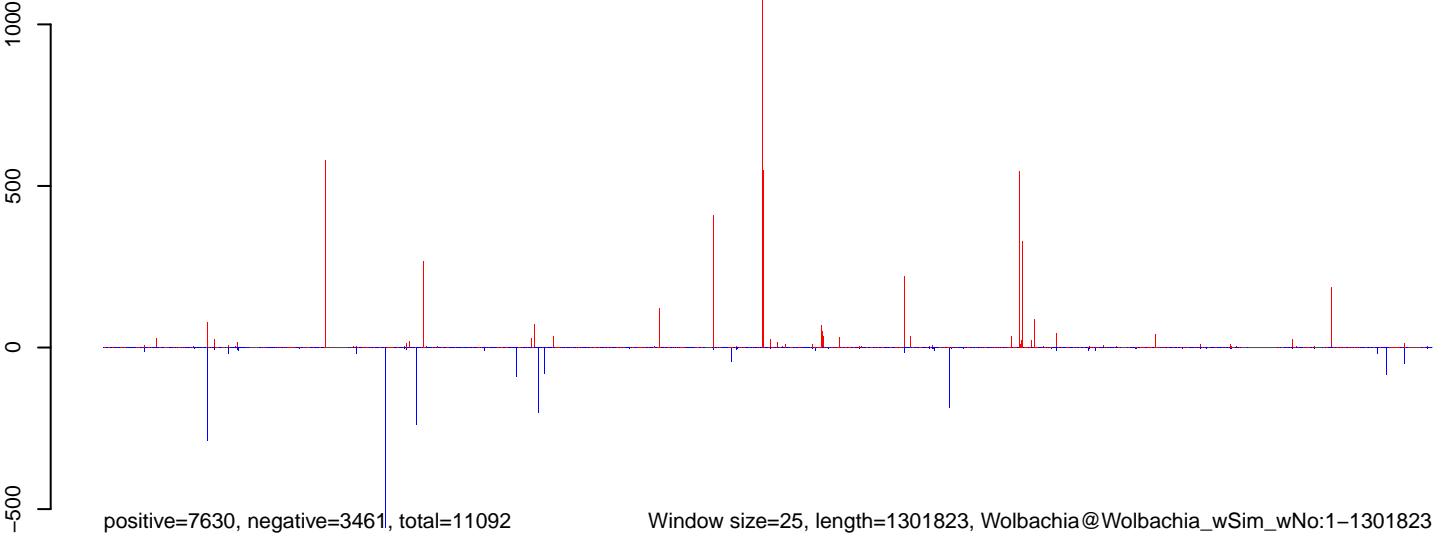
### CuQuin\_Ovary\_NL.18\_23.rep



### CuQuin\_Ovary\_NL.24\_35.rep

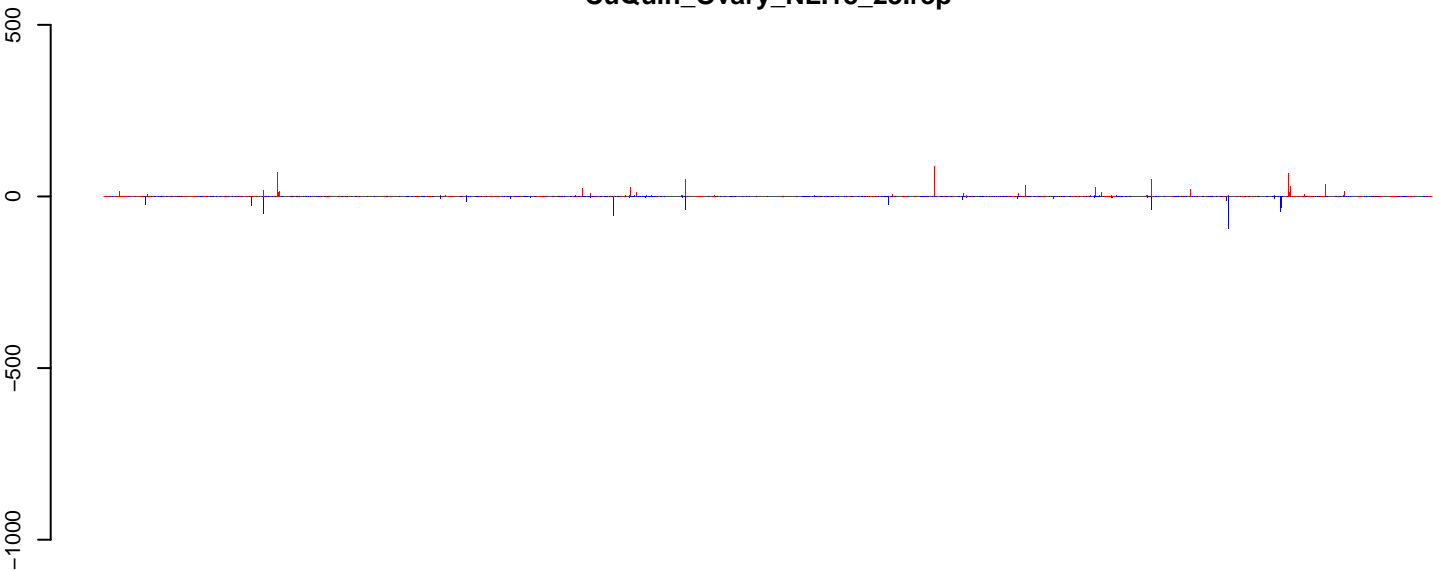


### CuQuin\_Ovary\_NL.rep



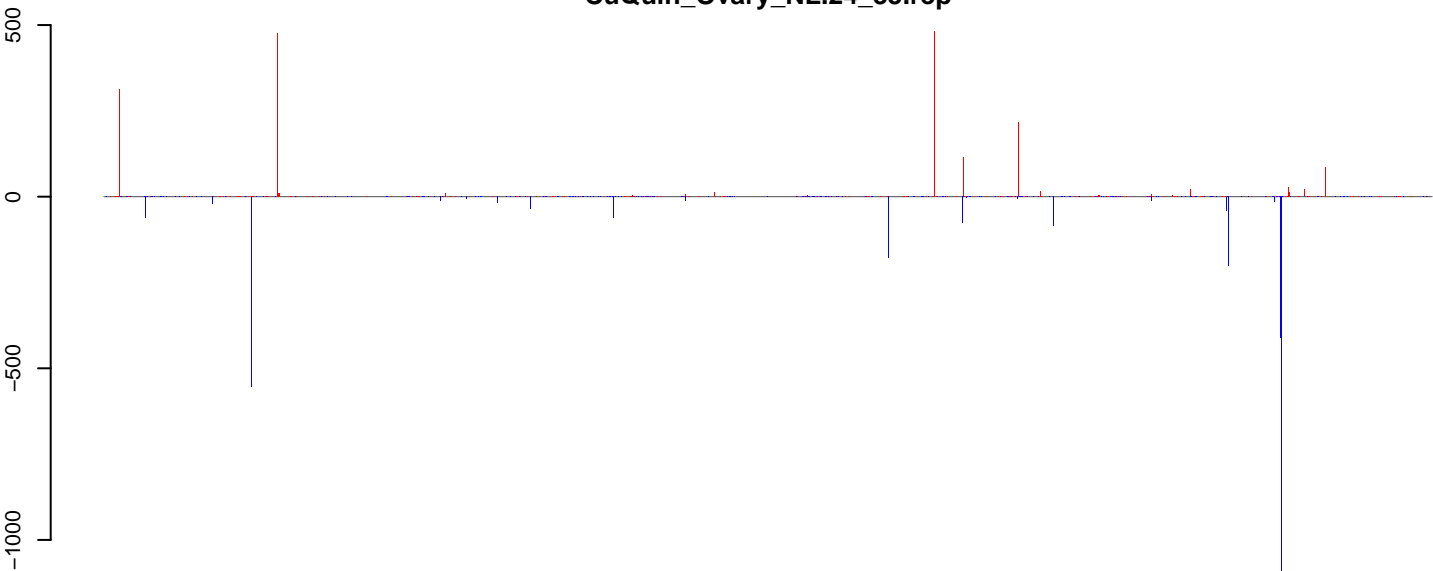
0 200000 400000 600000 800000 1000000 1200000

CuQuin\_Ovary\_NL.18\_23.rep



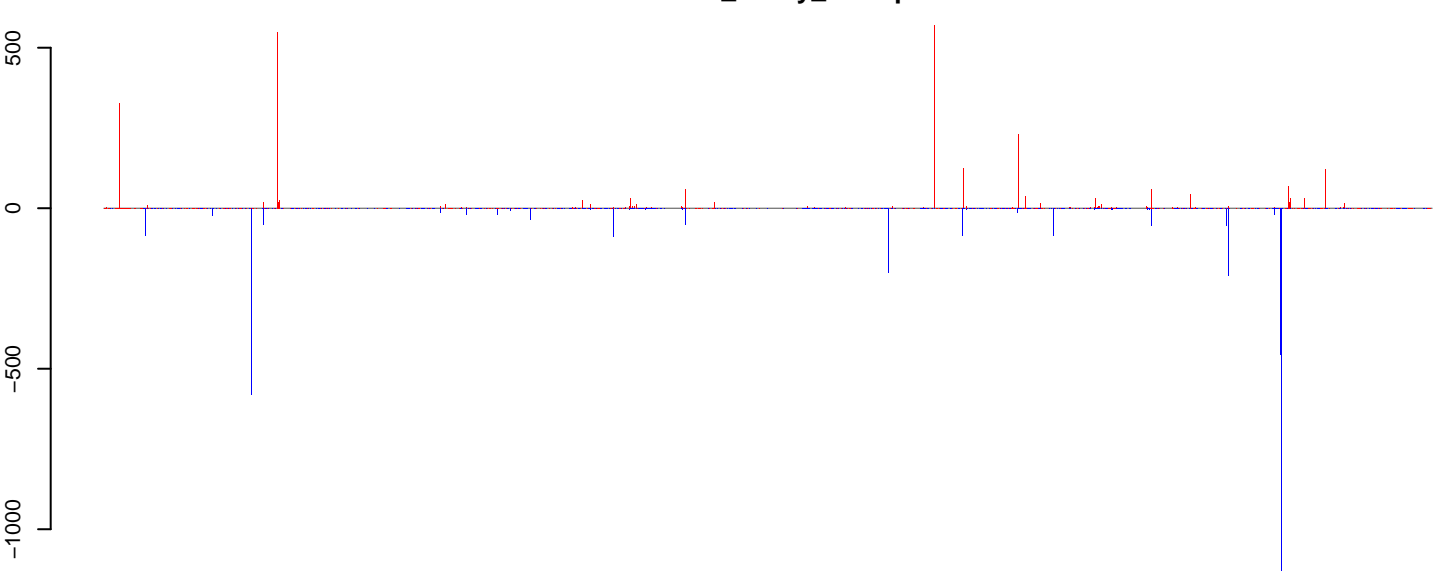
positive=1378, negative=935, total=2312

CuQuin\_Ovary\_NL.24\_35.rep



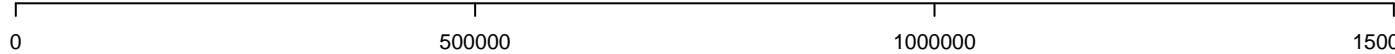
positive=2193, negative=3453, total=5646

CuQuin\_Ovary\_NL.rep

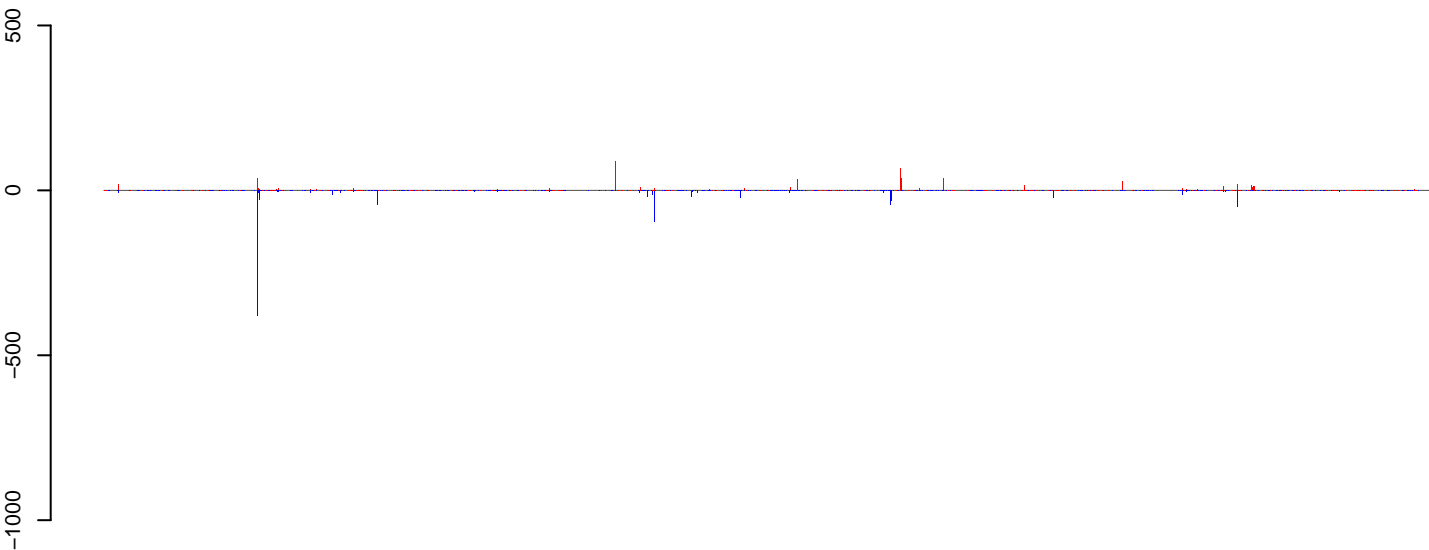


positive=3571, negative=4388, total=7959

Window size=25, length=1445873, Wolbachia@Wolbachia\_wRi:1-1445873



CuQuin\_Ovary\_NL.18\_23.rep



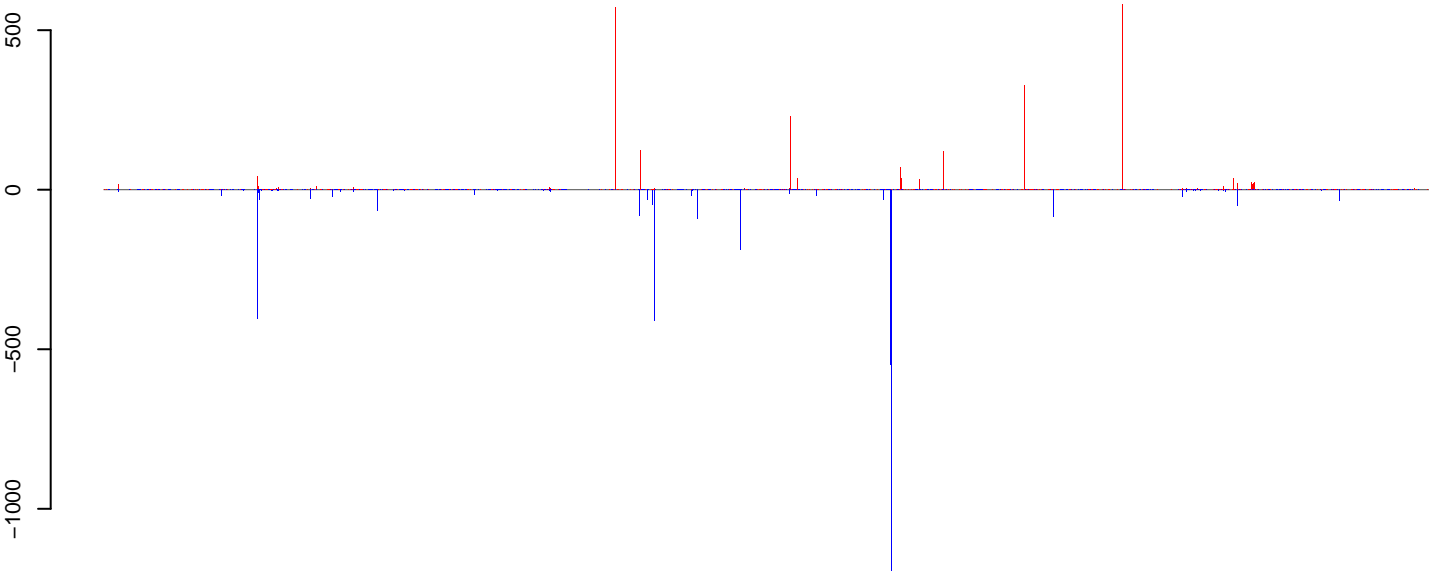
positive=1231, negative=1339, total=2570

CuQuin\_Ovary\_NL.24\_35.rep



positive=2229, negative=2940, total=5169

CuQuin\_Ovary\_NL.rep



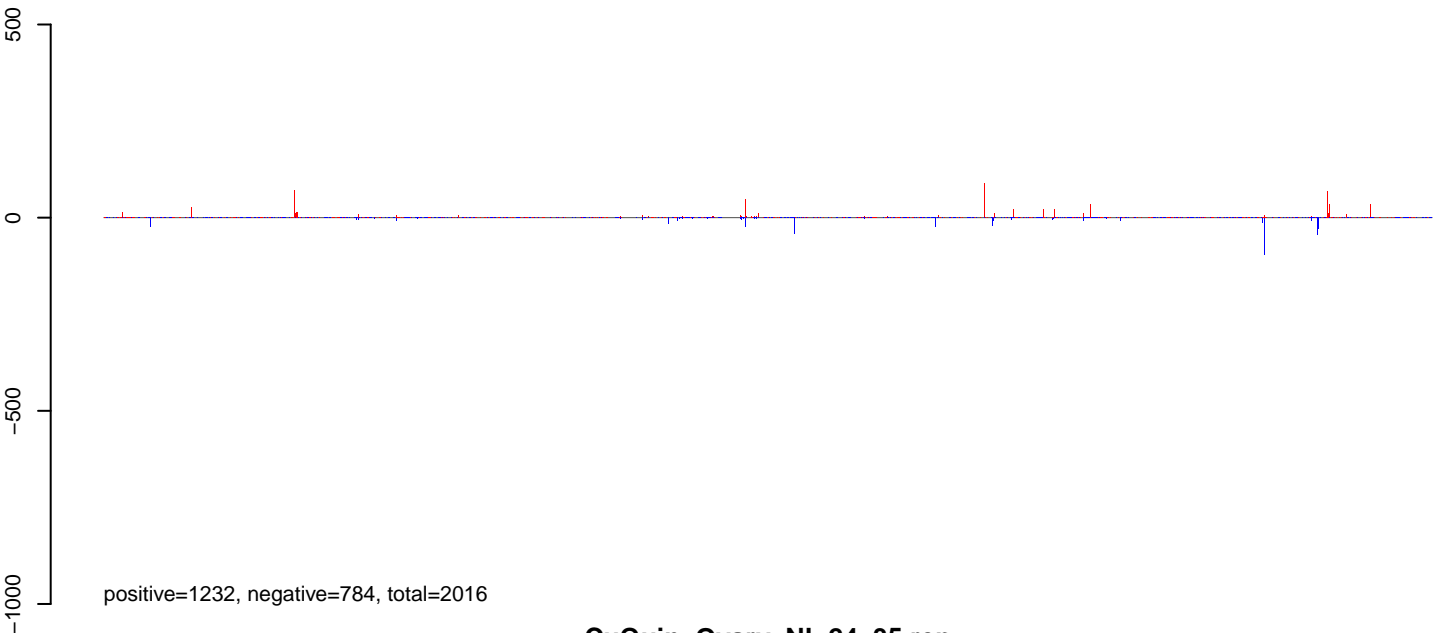
positive=3460, negative=4279, total=7739

Window size=25, length=1211929, Wolbachia@Wolbachia\_wVitA:1-1211929

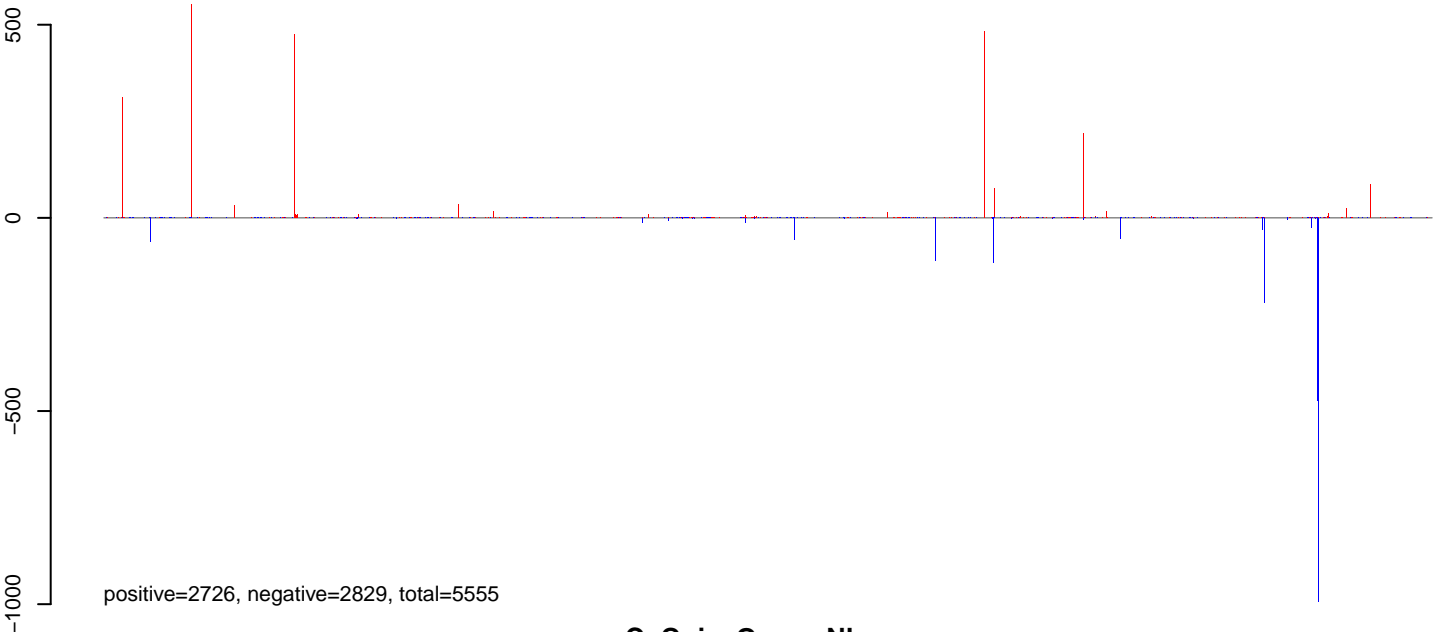
0 200000 400000 600000 800000 1000000 1200000



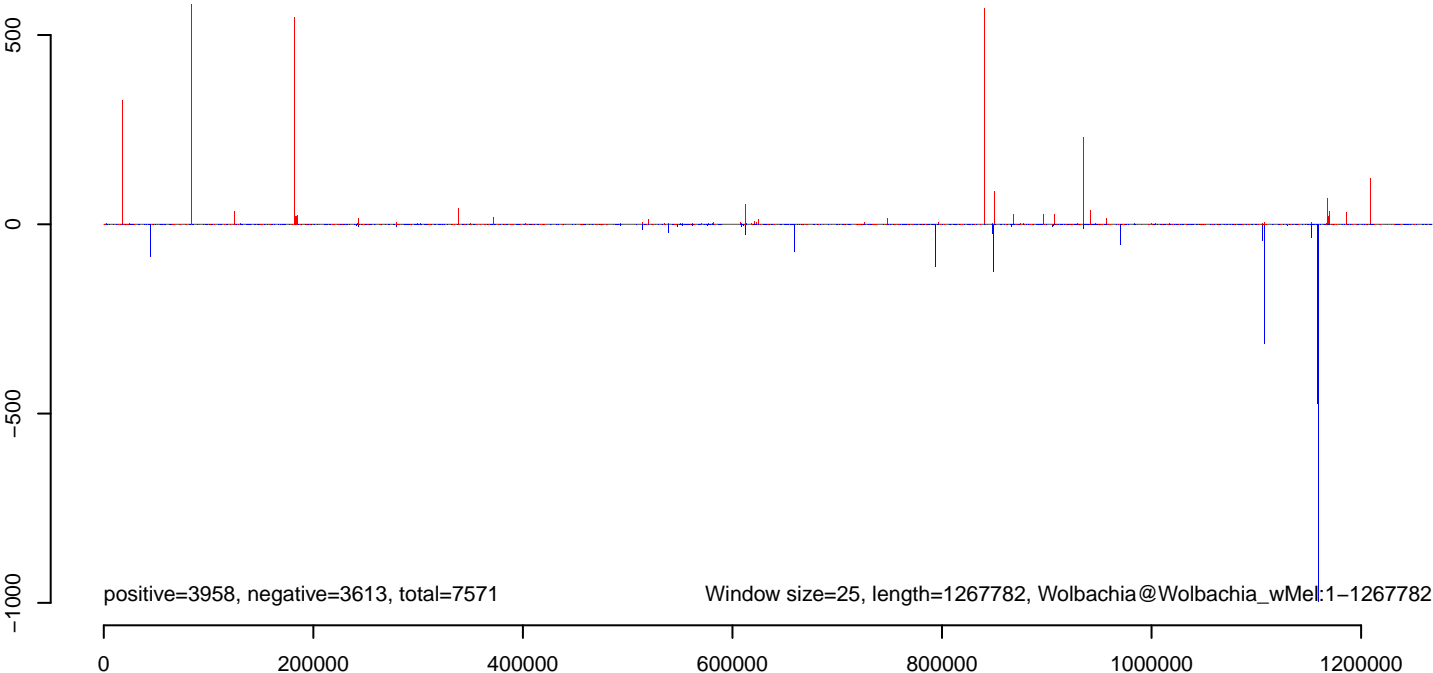
CuQuin\_Ovary\_NL.18\_23.rep



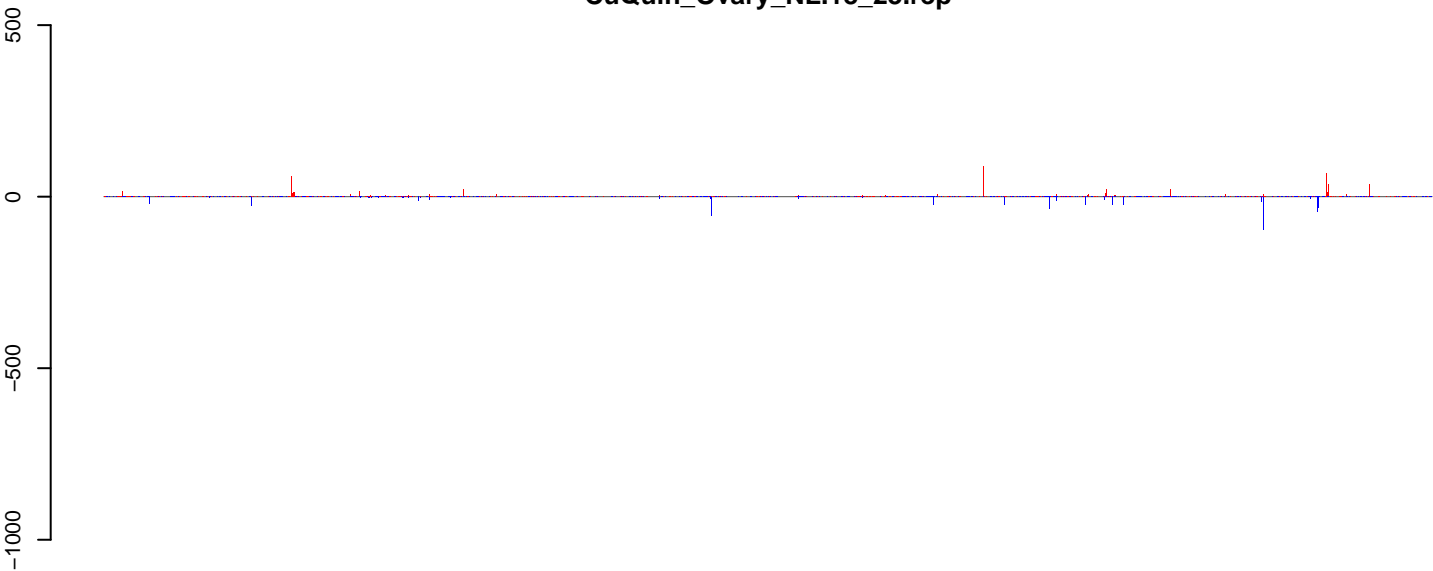
CuQuin\_Ovary\_NL.24\_35.rep



CuQuin\_Ovary\_NL.rep

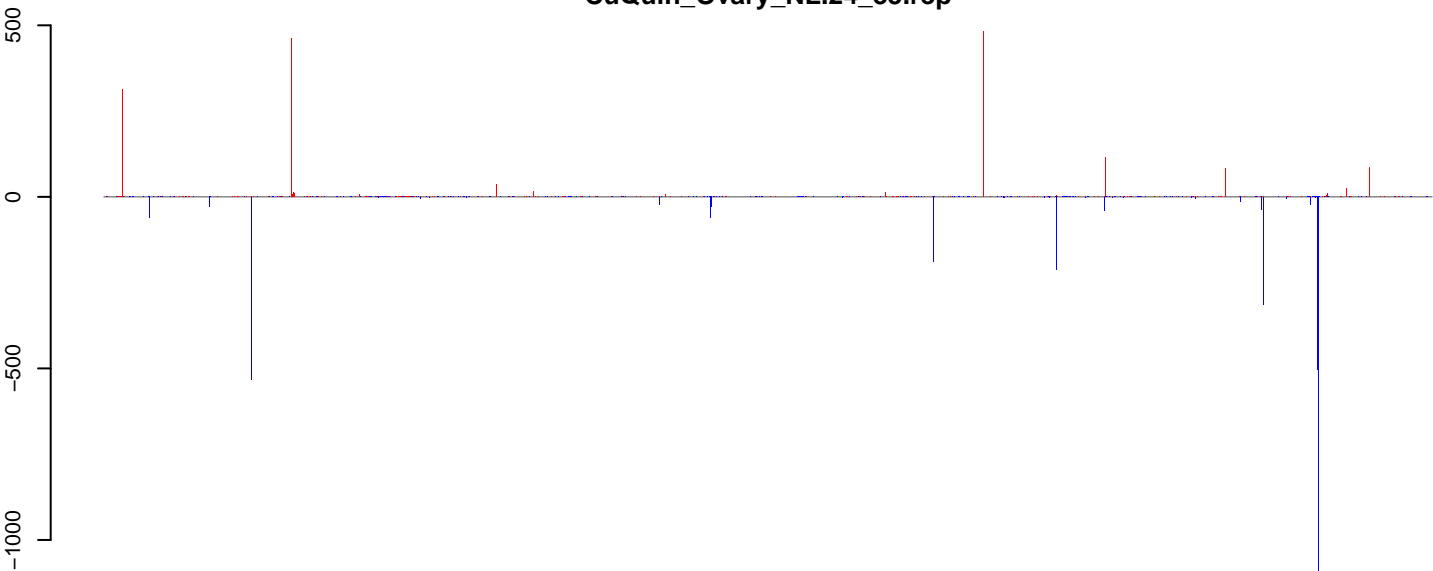


CuQuin\_Ovary\_NL.18\_23.rep



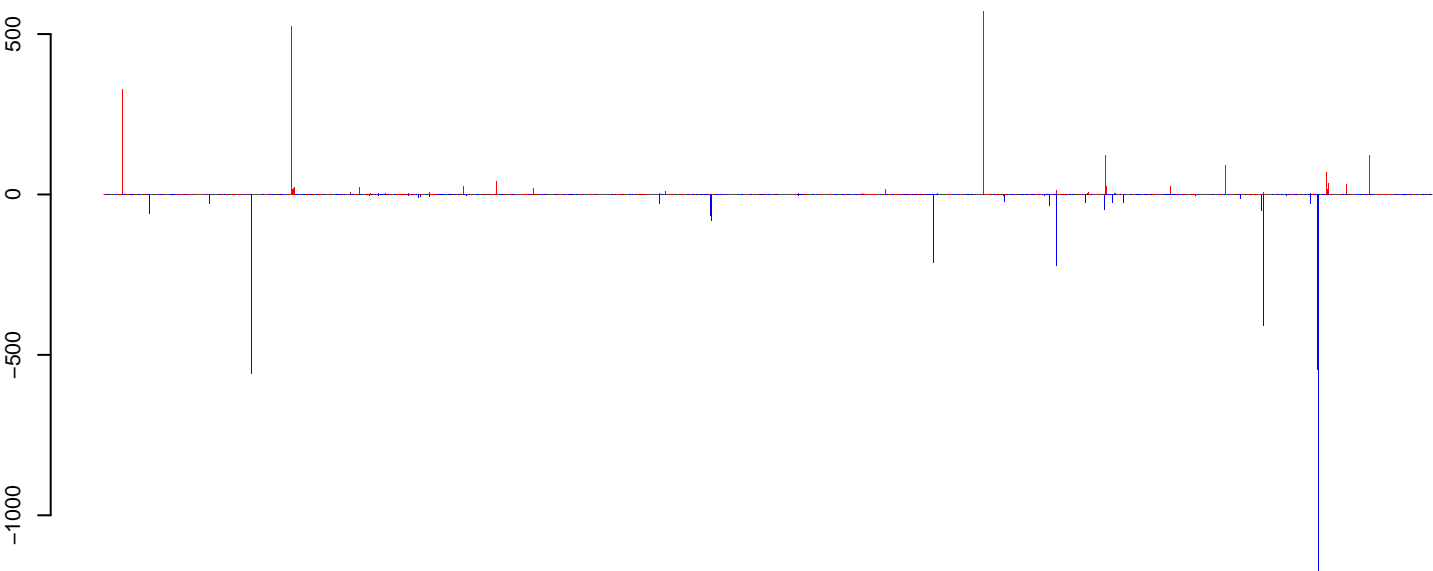
positive=1110, negative=836, total=1947

CuQuin\_Ovary\_NL.24\_35.rep



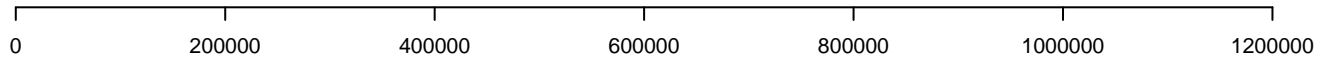
positive=1994, negative=3538, total=5532

CuQuin\_Ovary\_NL.rep

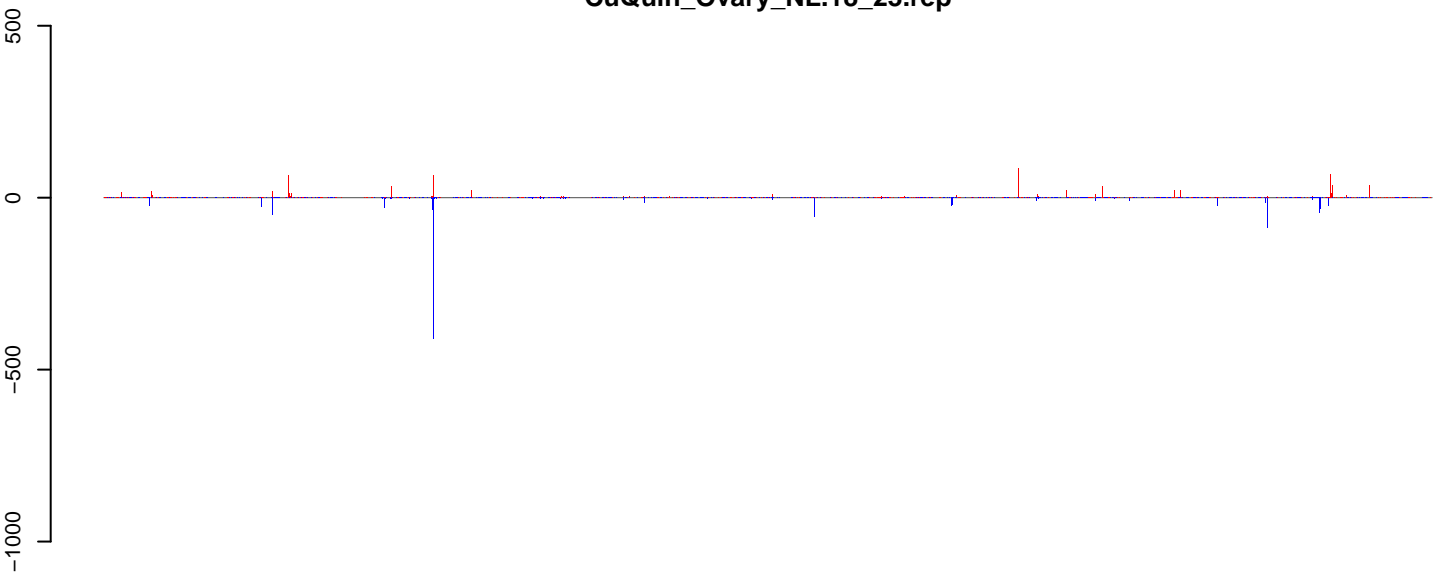


positive=3104, negative=4375, total=7479

Window size=25, length=1268461, Wolbachia@Wolbachia\_wSim\_wAu:1-1268461

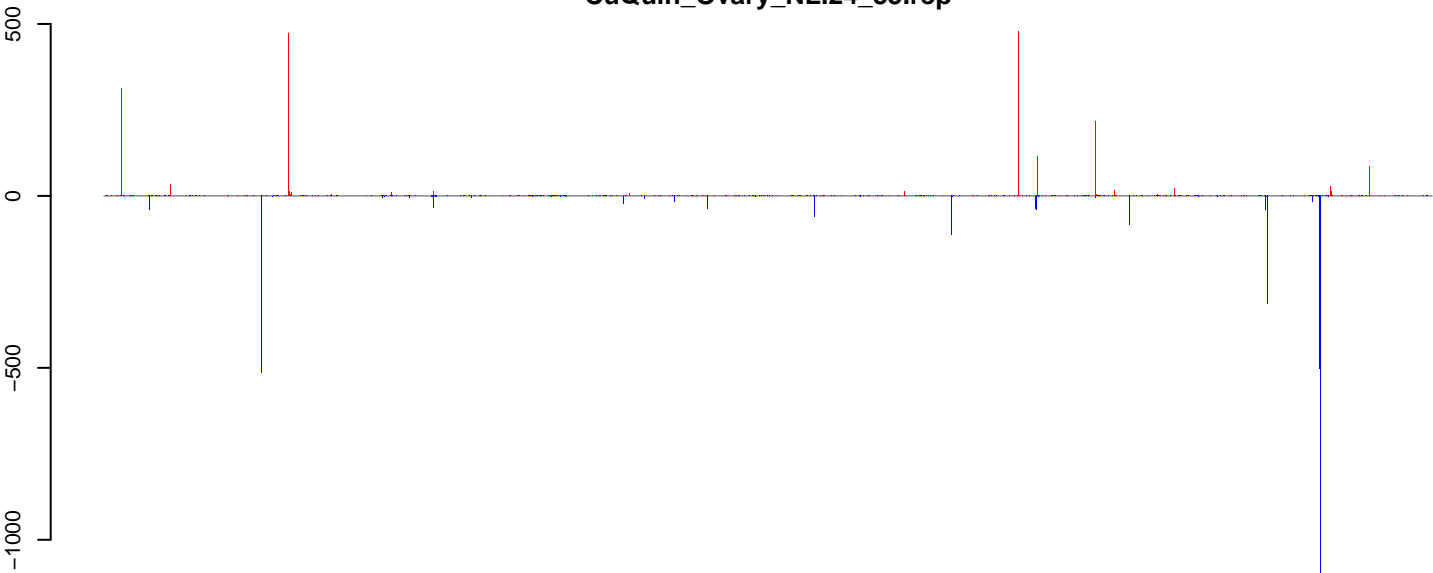


CuQuin\_Ovary\_NL.18\_23.rep



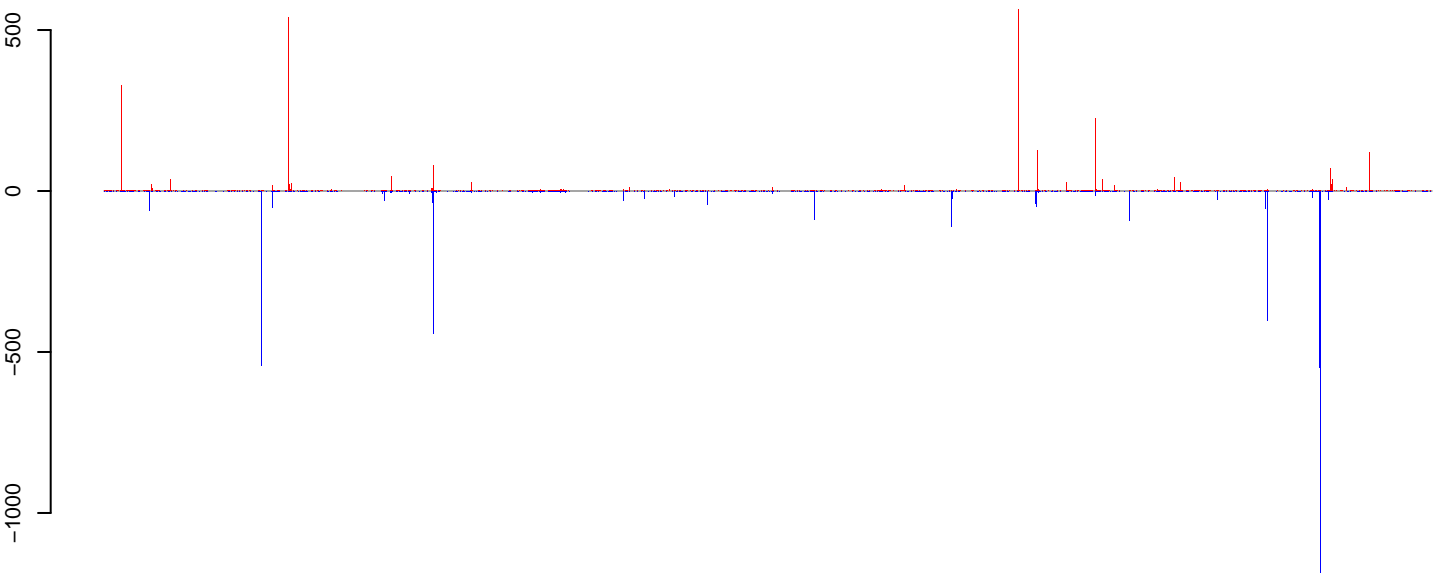
positive=1297, negative=1404, total=2701

CuQuin\_Ovary\_NL.24\_35.rep



positive=2179, negative=3465, total=5645

CuQuin\_Ovary\_NL.rep

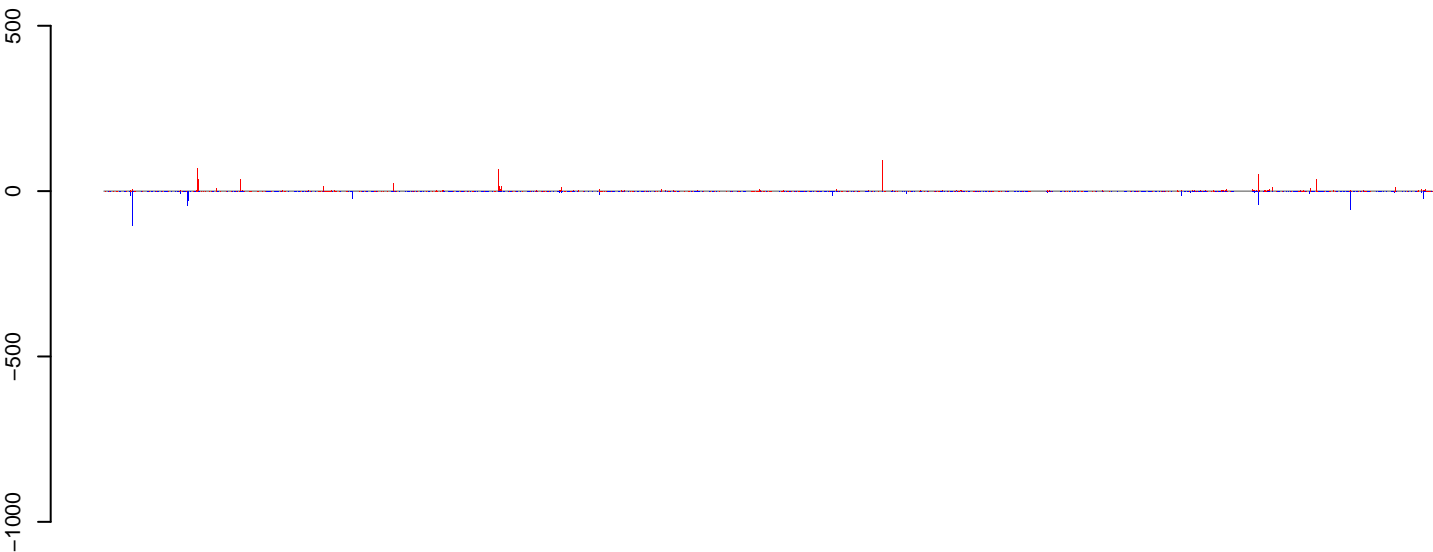


positive=3476, negative=4869, total=8346

Window size=25, length=1295804, Wolbachia@Wolbachia\_wSim\_wHa:1-1295804

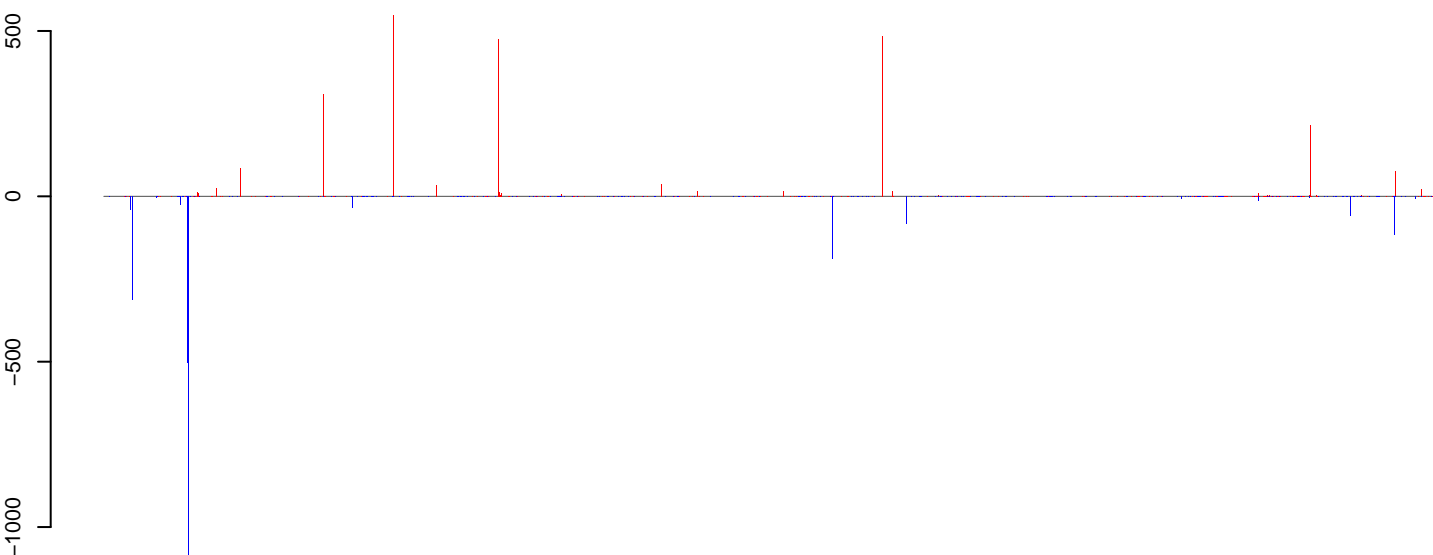
0 200000 400000 600000 800000 1000000 1200000

CuQuin\_Ovary\_NL.18\_23.rep



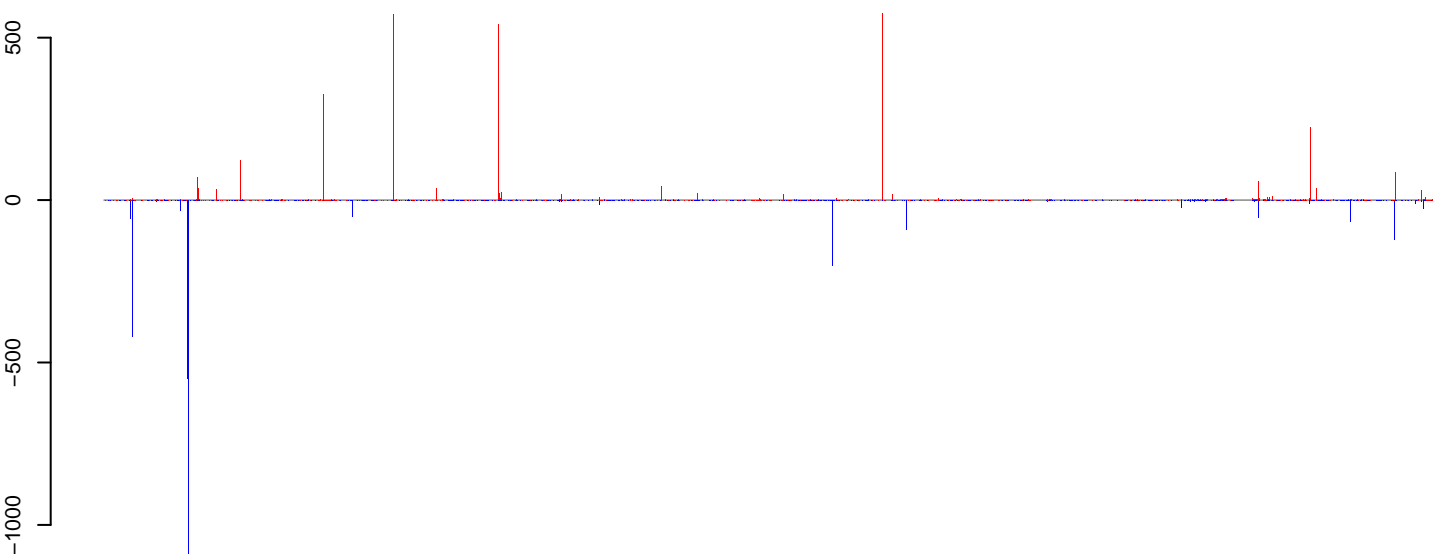
positive=1163, negative=750, total=1913

CuQuin\_Ovary\_NL.24\_35.rep



positive=2728, negative=2812, total=5540

CuQuin\_Ovary\_NL.rep

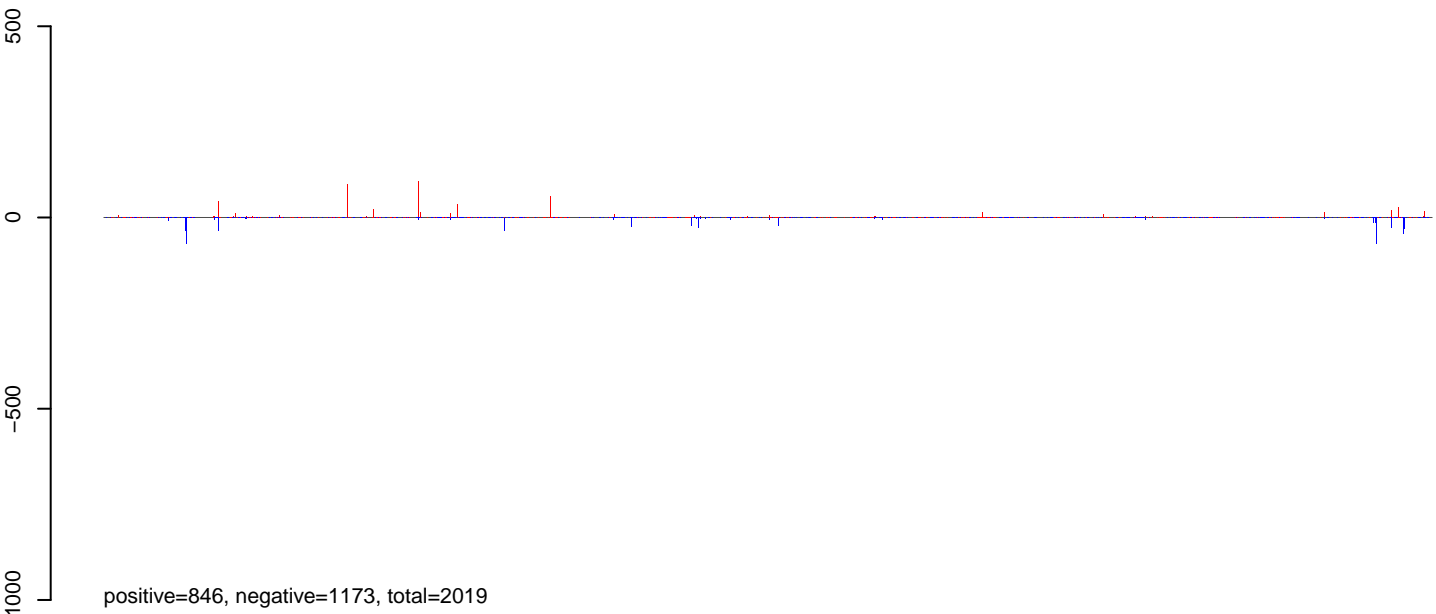


positive=3891, negative=3562, total=7453

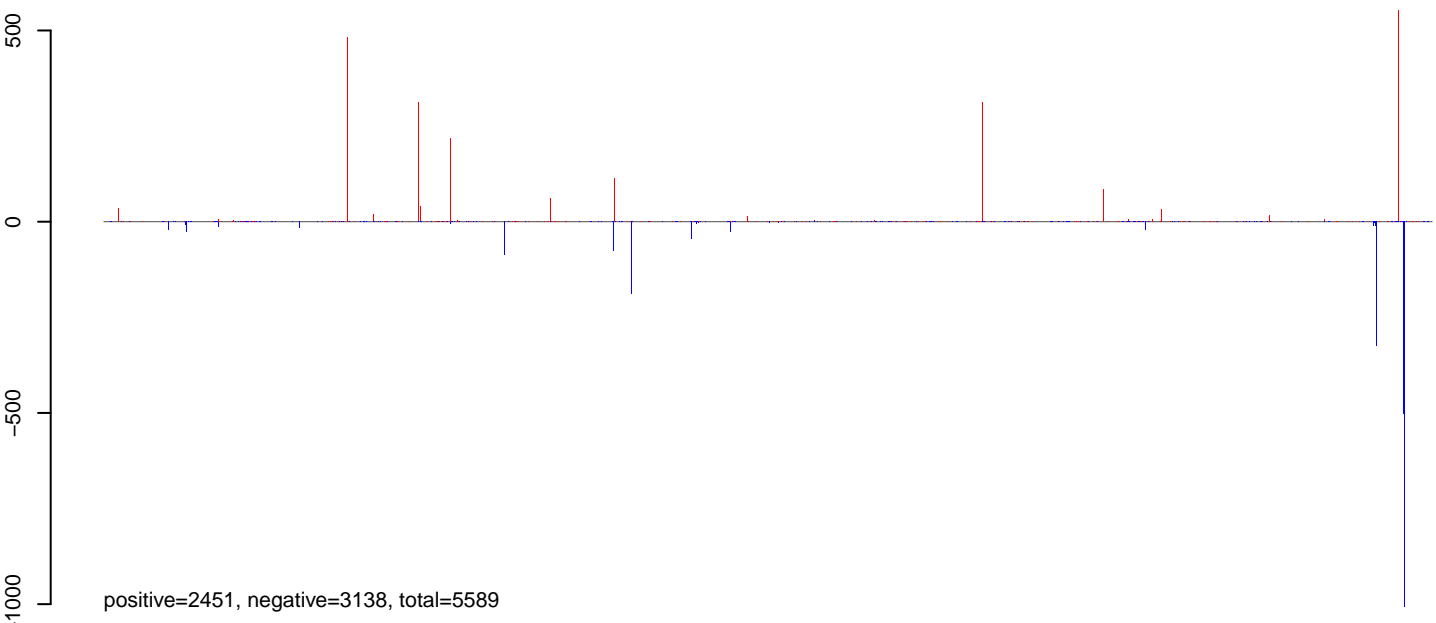
Window size=25, length=1239155, Wolbachia@Wolbachia\_wMelPop:1-1239155

0 200000 400000 600000 800000 1000000 1200000

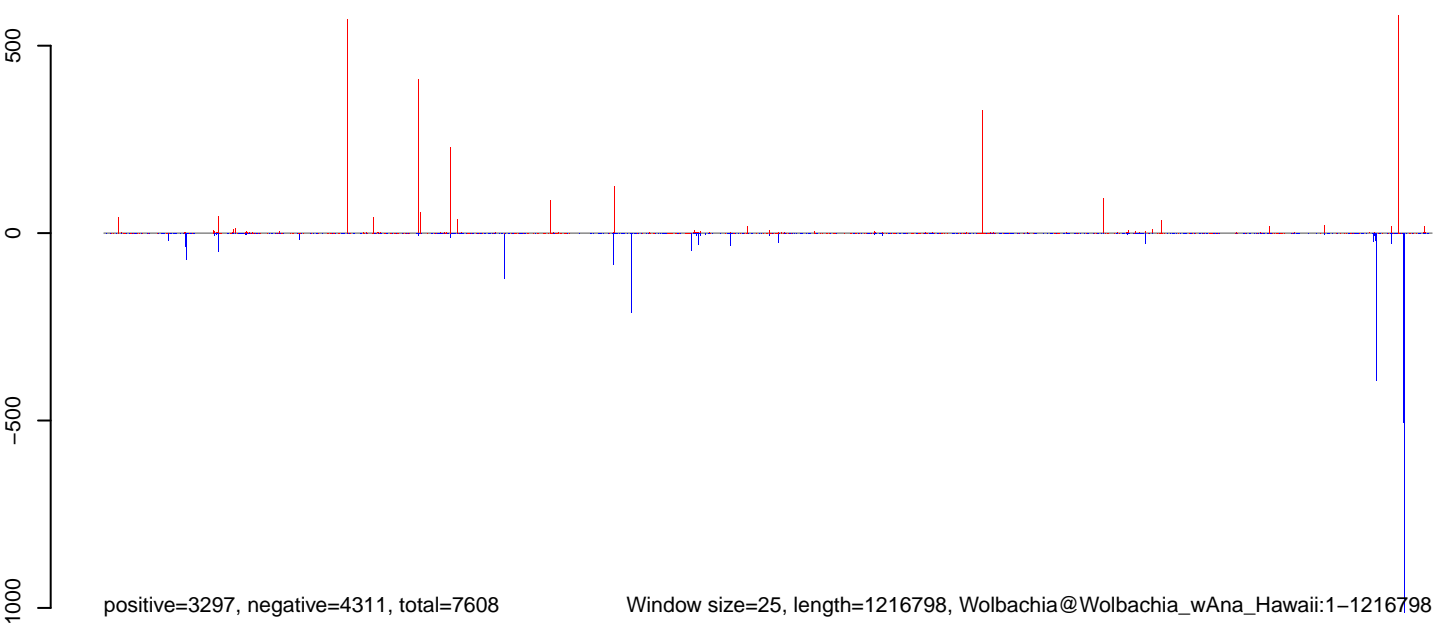
CuQuin\_Ovary\_NL.18\_23.rep



CuQuin\_Ovary\_NL.24\_35.rep

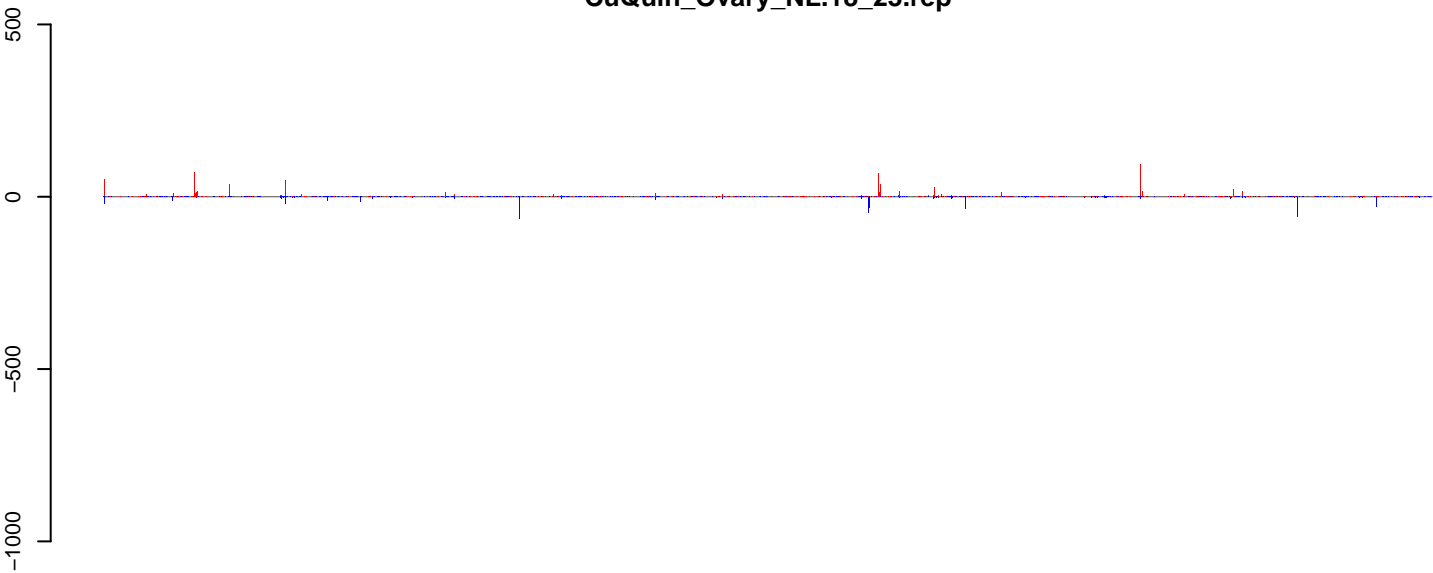


CuQuin\_Ovary\_NL.rep



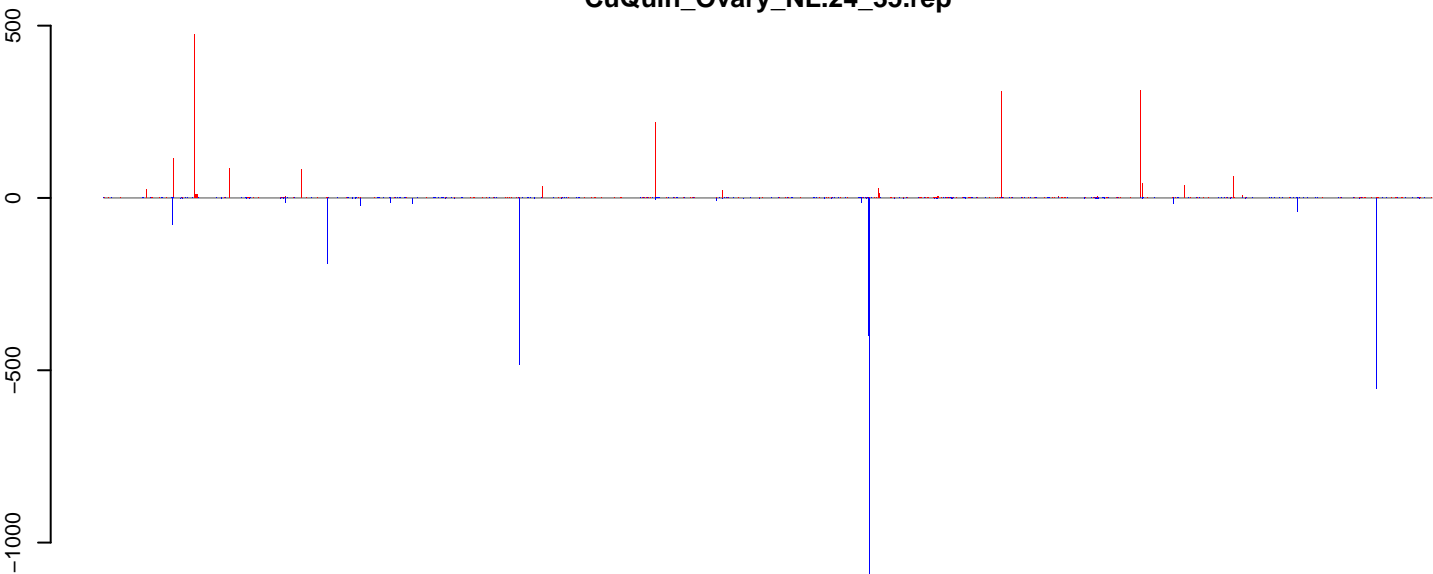
0 200000 400000 600000 800000 1000000 1200000

CuQuin\_Ovary\_NL.18\_23.rep



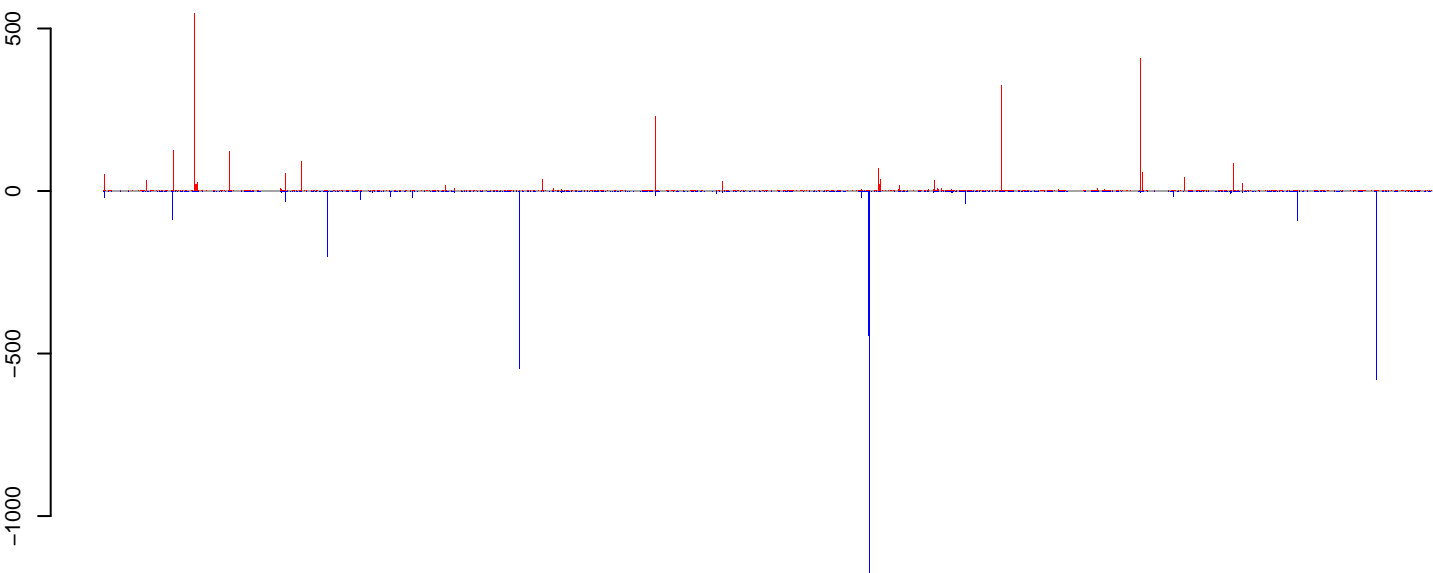
positive=1230, negative=780, total=2010

CuQuin\_Ovary\_NL.24\_35.rep



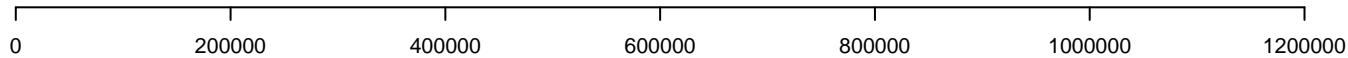
positive=2215, negative=3370, total=5585

CuQuin\_Ovary\_NL.rep

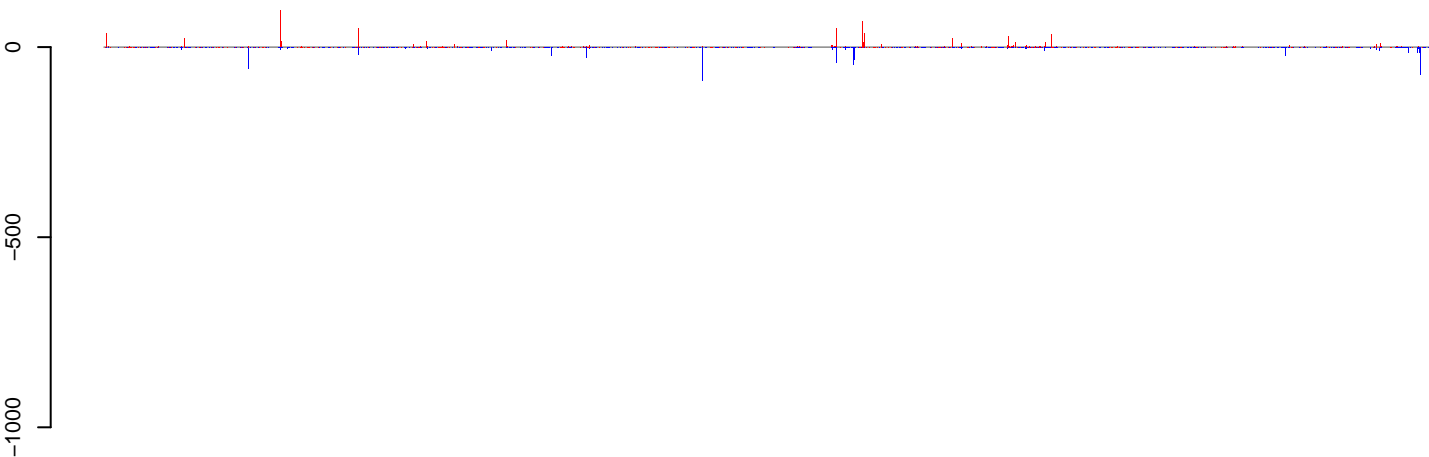


positive=3445, negative=4150, total=7594

Window size=25, length=1236914, Wolbachia@Wolbachia\_wAna\_India:1-1236914

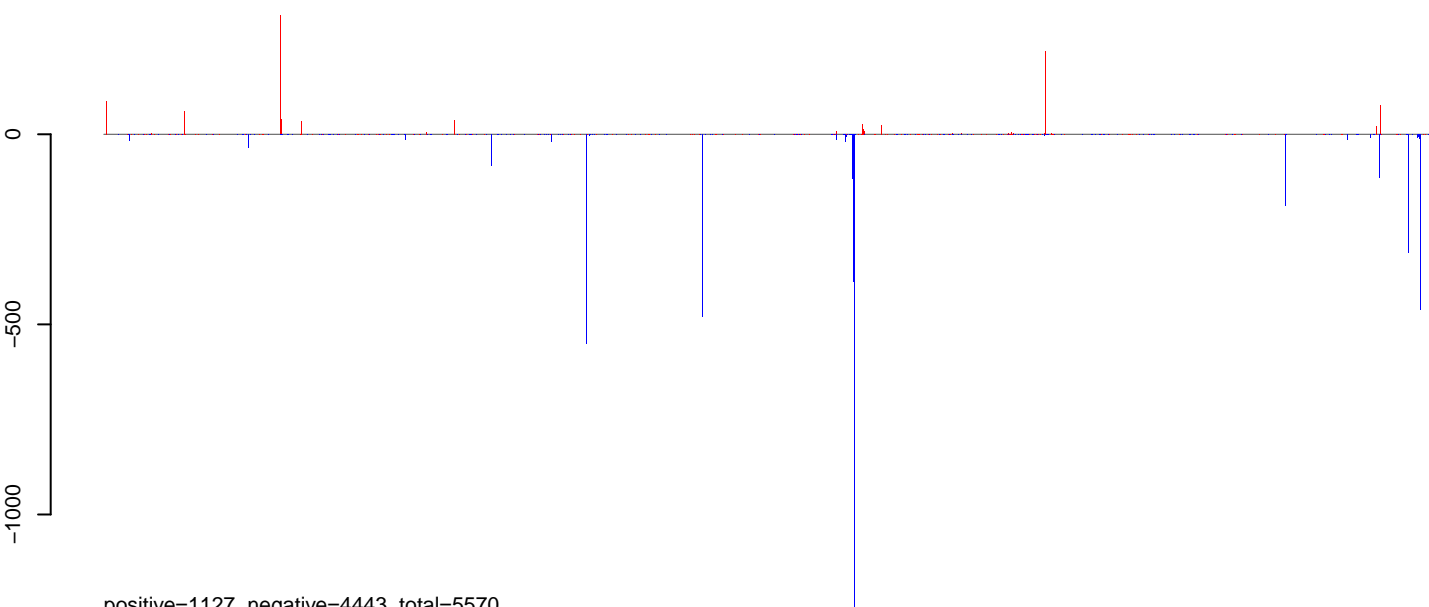


CuQuin\_Ovary\_NL.18\_23.rep



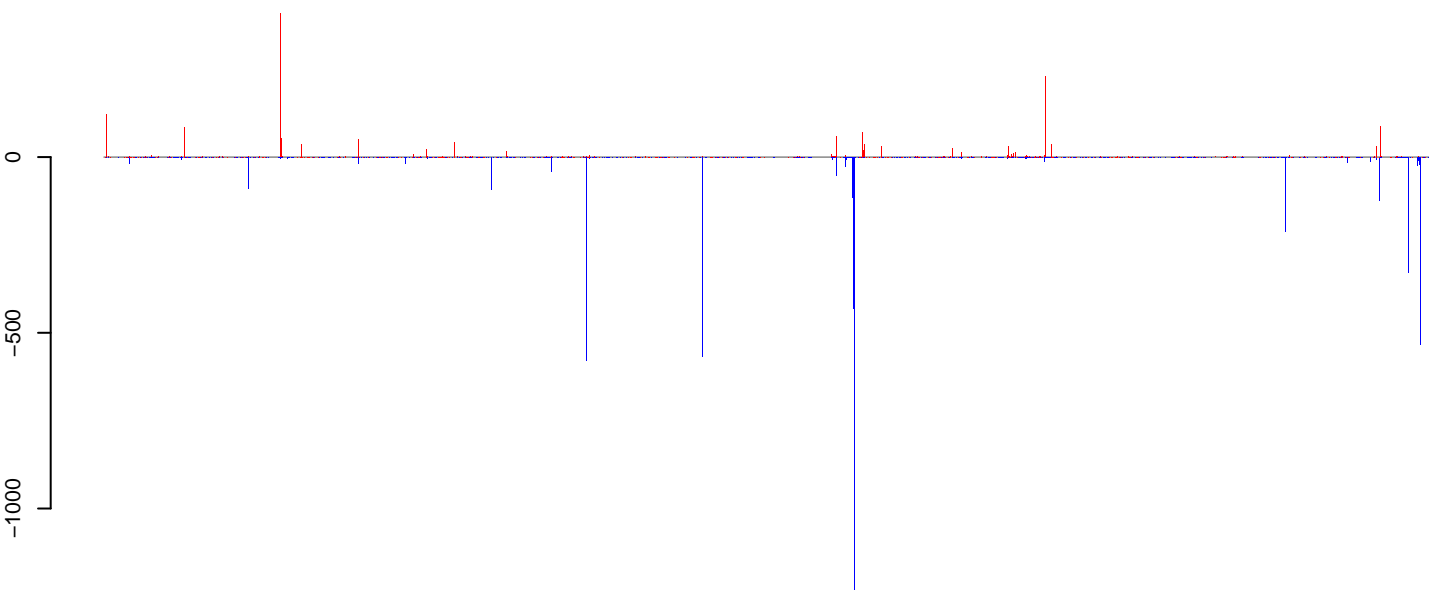
positive=936, negative=1023, total=1958

CuQuin\_Ovary\_NL.24\_35.rep



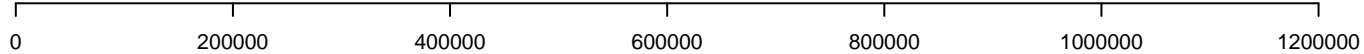
positive=1127, negative=4443, total=5570

CuQuin\_Ovary\_NL.rep

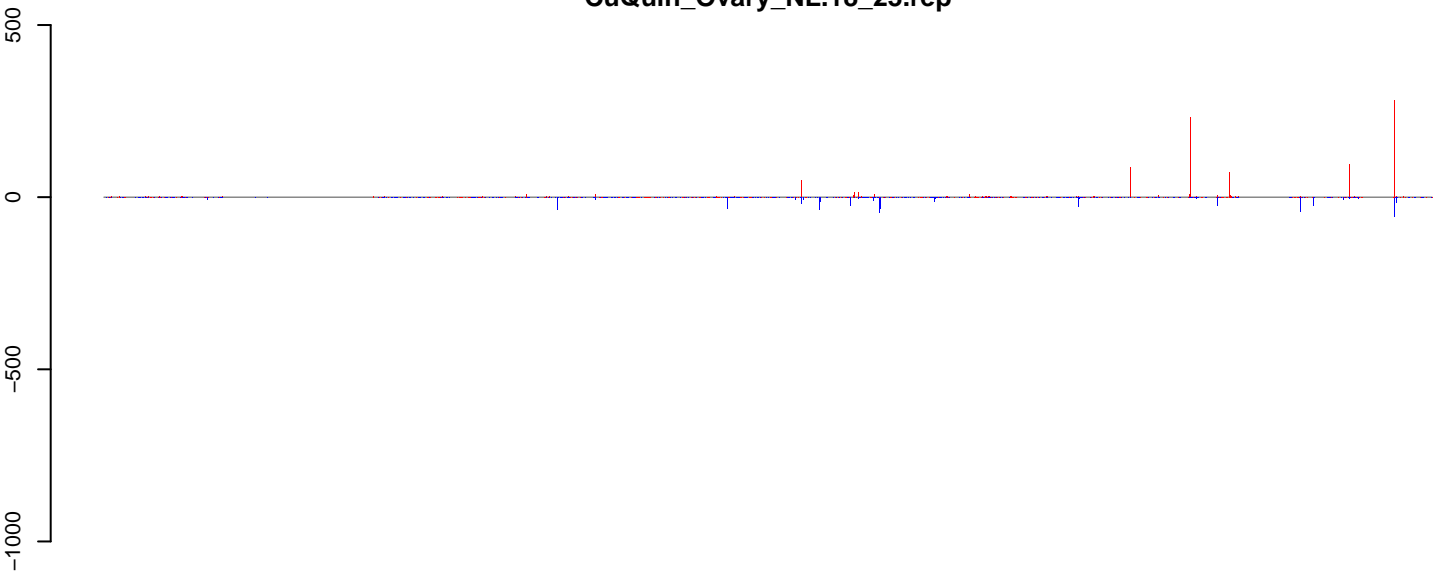


positive=2063, negative=5466, total=7528

Window size=25, length=1223568, Wolbachia@Wolbachia\_wAna\_Indonesia:1-1223568



CuQuin\_Ovary\_NL.18\_23.rep



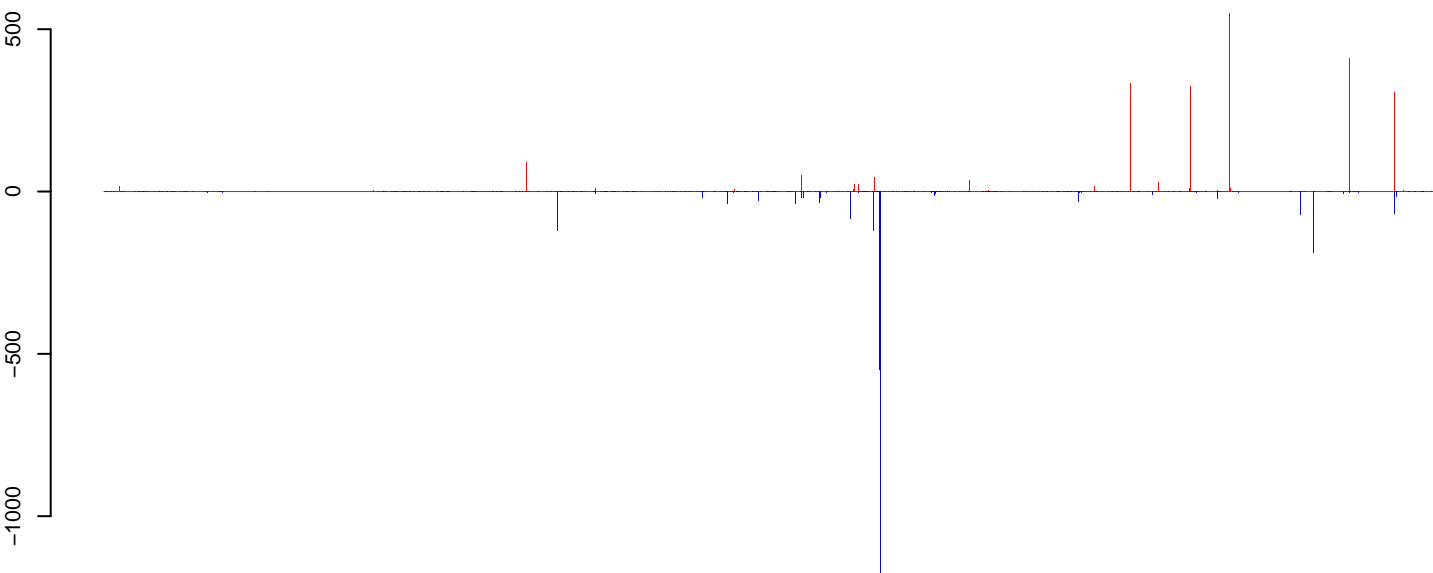
positive=1555, negative=940, total=2495

CuQuin\_Ovary\_NL.24\_35.rep



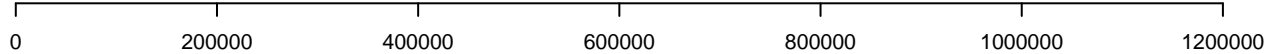
positive=1619, negative=2626, total=4245

CuQuin\_Ovary\_NL.rep



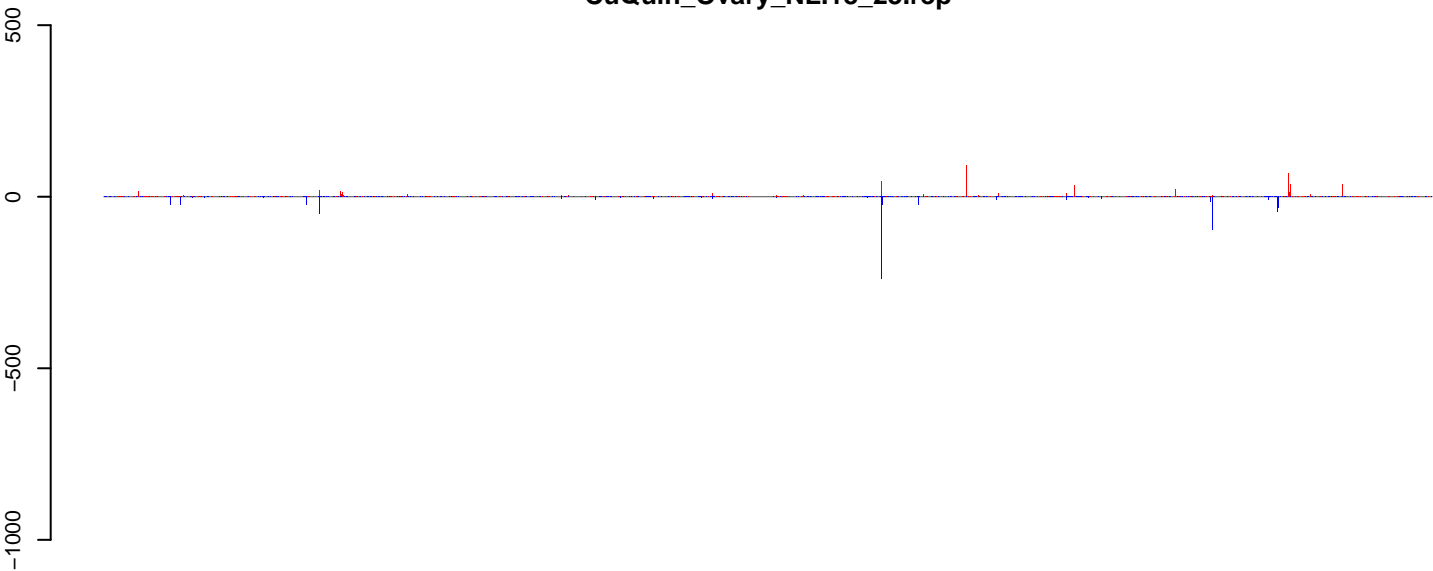
positive=3173, negative=3566, total=6740

Window size=25, length=1320505, Wolbachia@Wolbachia\_HN2016:1-1320505



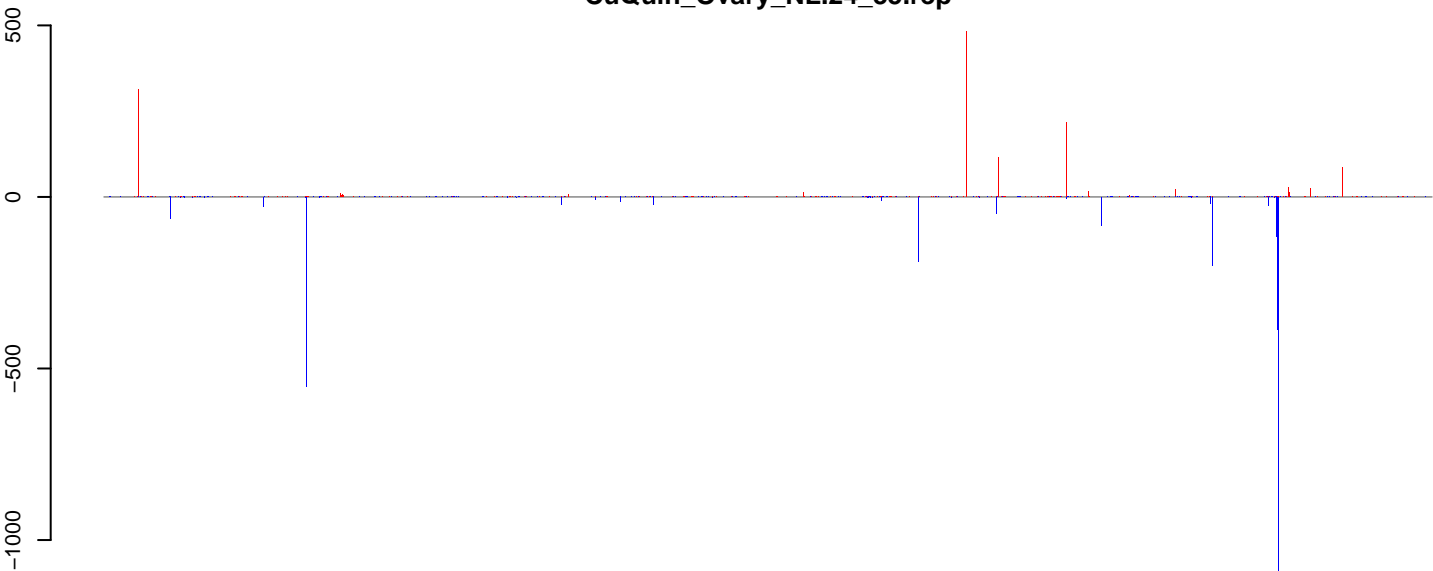


CuQuin\_Ovary\_NL.18\_23.rep



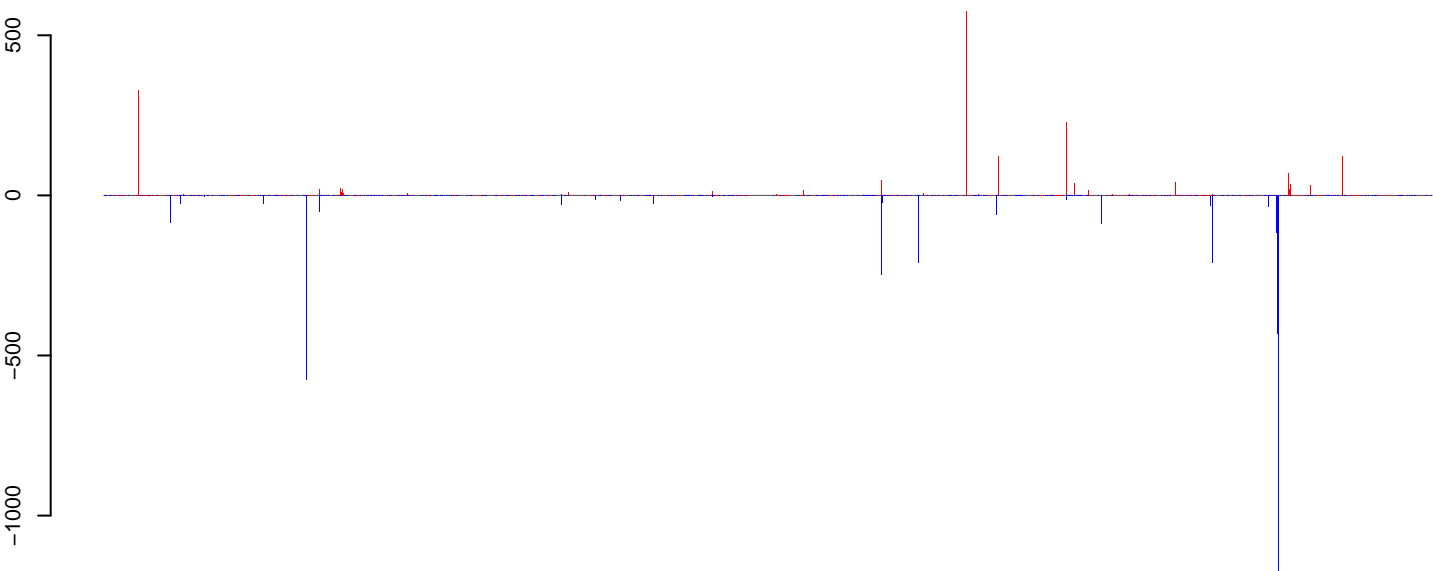
positive=988, negative=937, total=1925

CuQuin\_Ovary\_NL.24\_35.rep



positive=1638, negative=3313, total=4951

CuQuin\_Ovary\_NL.rep

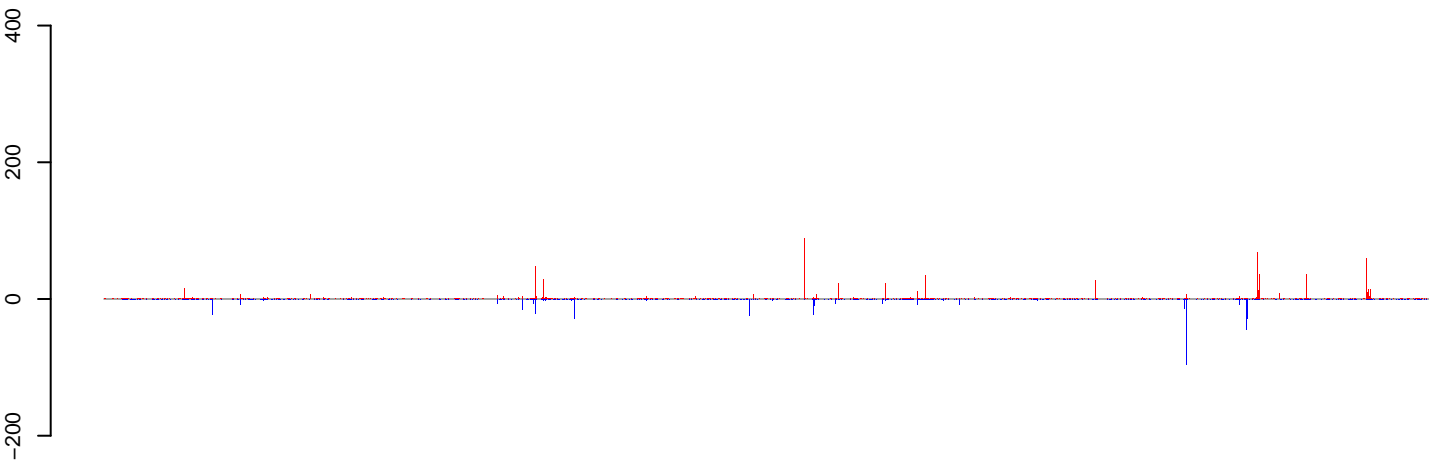


positive=2626, negative=4250, total=6876

Window size=25, length=1049170, Wolbachia@Wolbachia\_wUni:1-1049170

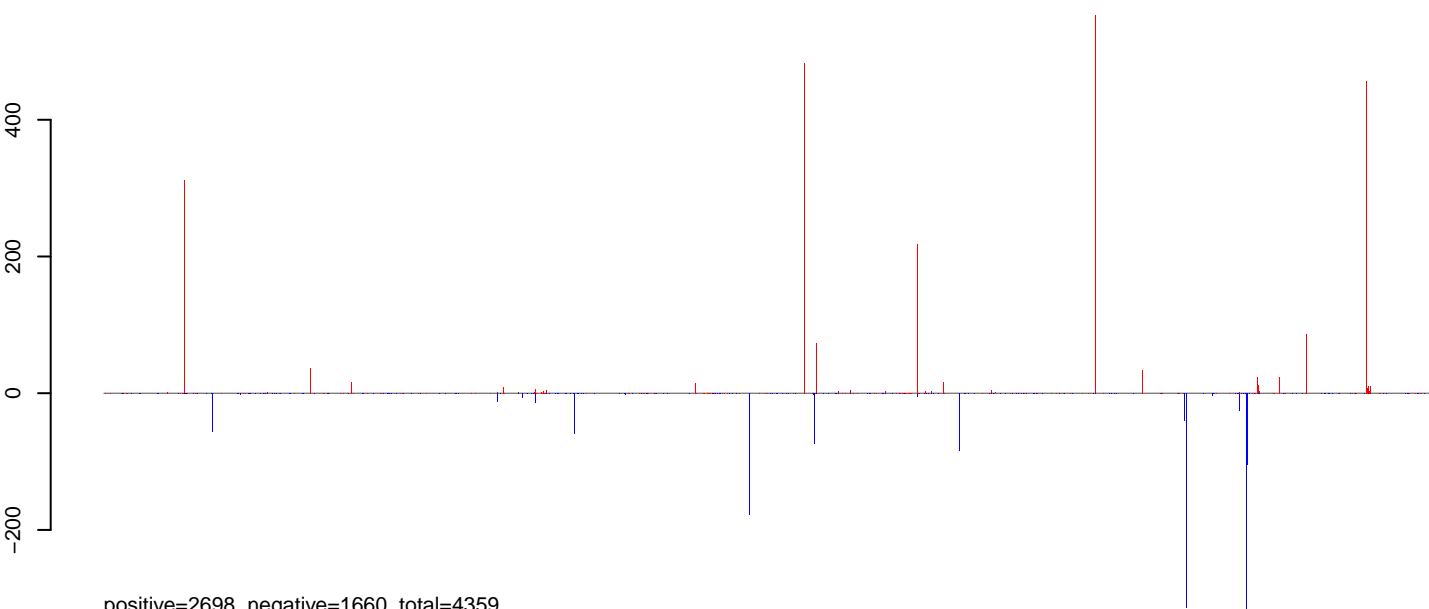
0e+00 2e+05 4e+05 6e+05 8e+05 1e+06

### CuQuin\_Ovary\_NL.18\_23.rep



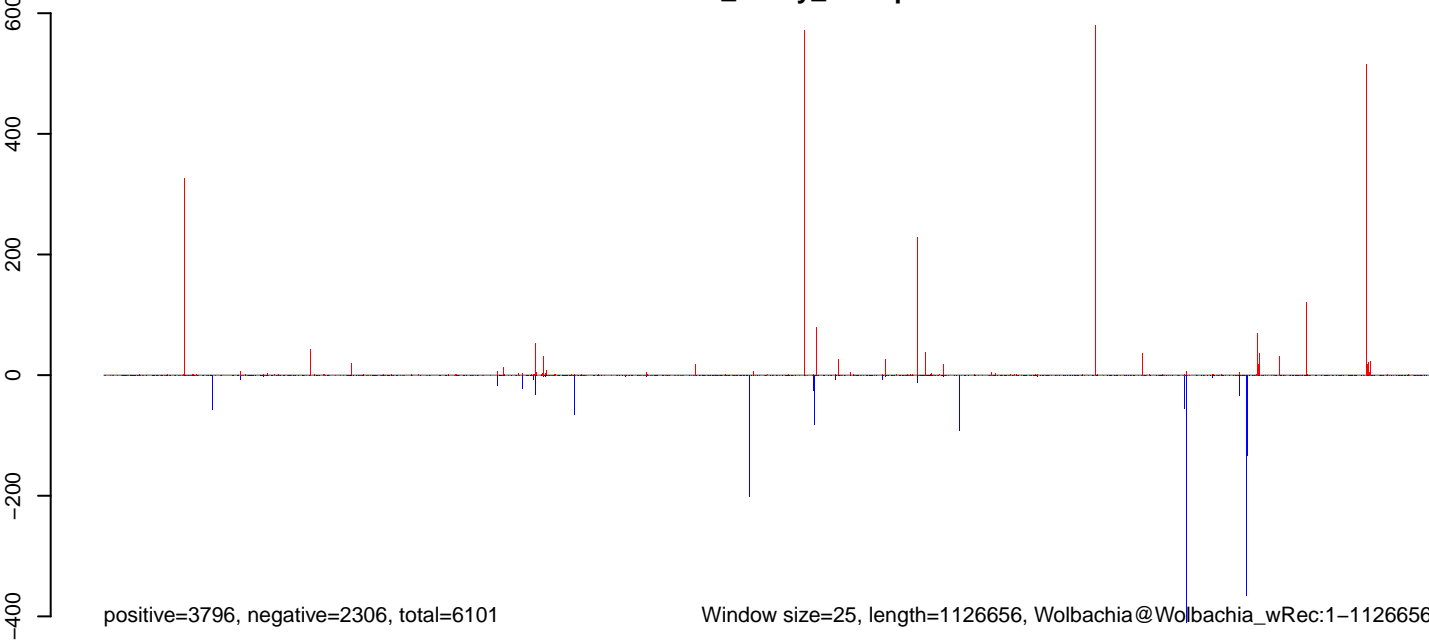
positive=1097, negative=645, total=1742

### CuQuin\_Ovary\_NL.24\_35.rep



positive=2698, negative=1660, total=4359

### CuQuin\_Ovary\_NL.rep

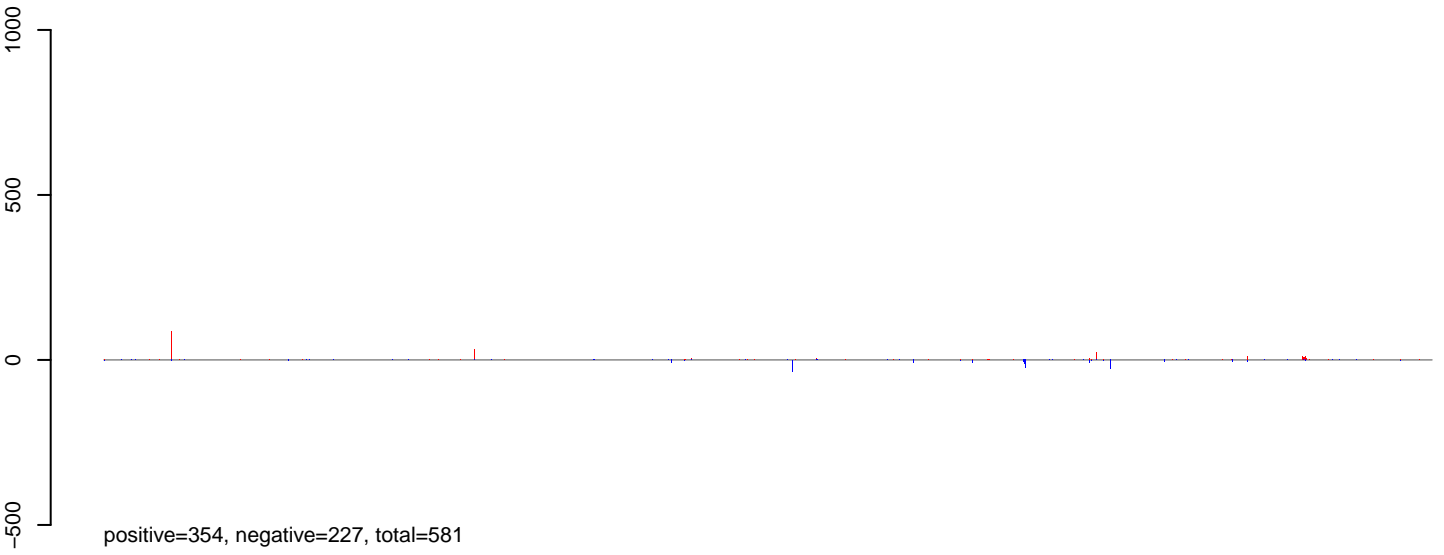


positive=3796, negative=2306, total=6101

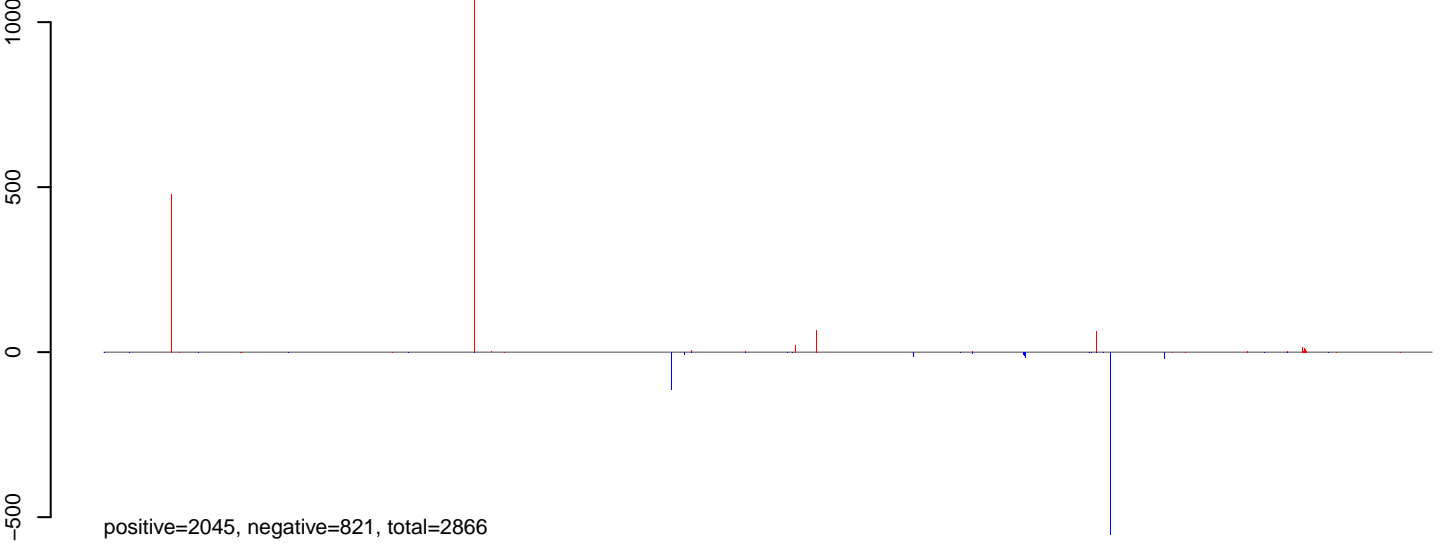
Window size=25, length=1126656, Wolbachia@Wolbachia\_wRec:1-1126656

0e+00 2e+05 4e+05 6e+05 8e+05 1e+06

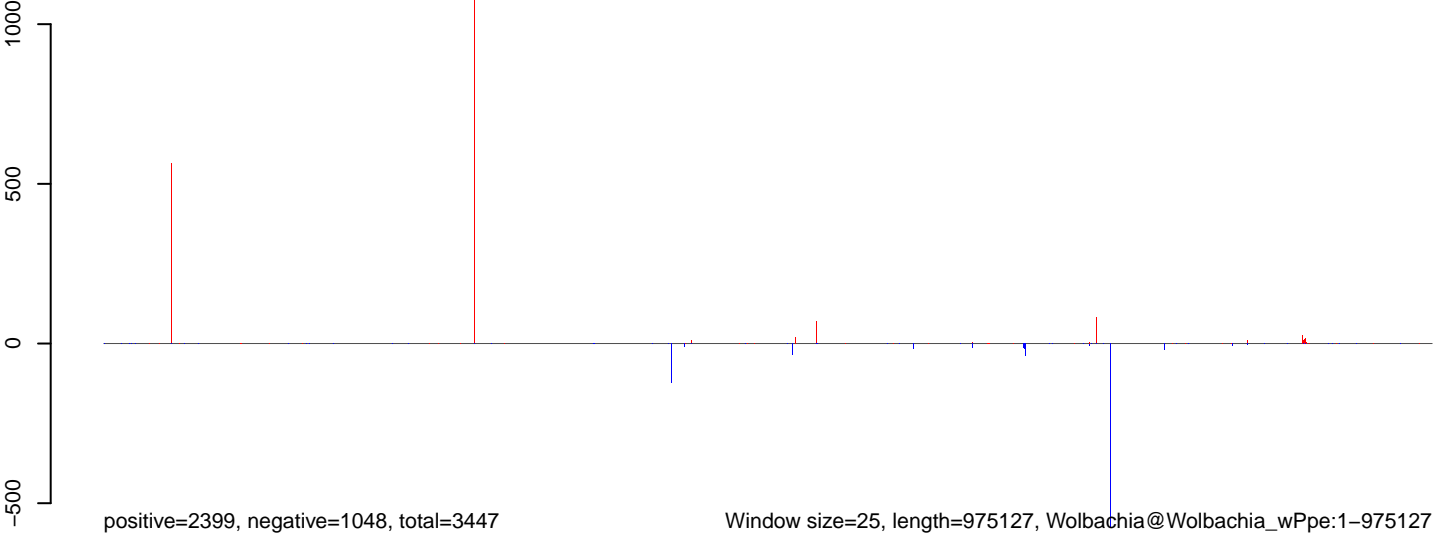
### CuQuin\_Ovary\_NL.18\_23.rep



### CuQuin\_Ovary\_NL.24\_35.rep



### CuQuin\_Ovary\_NL.rep



0e+00 2e+05 4e+05 6e+05 8e+05 1e+06