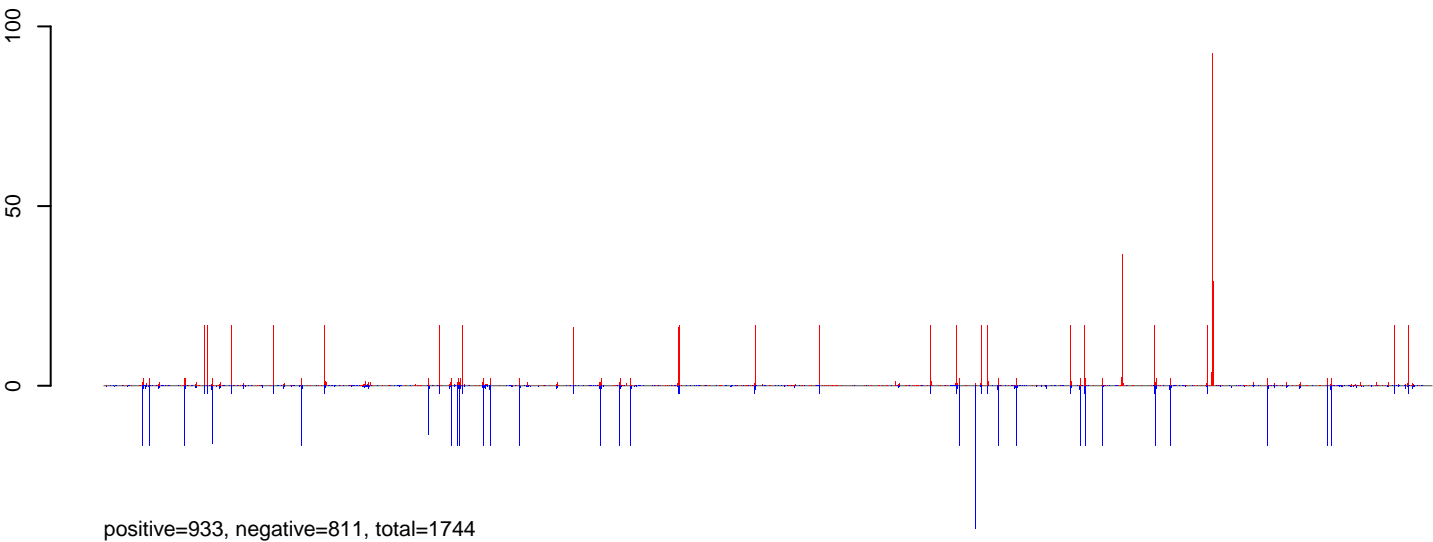
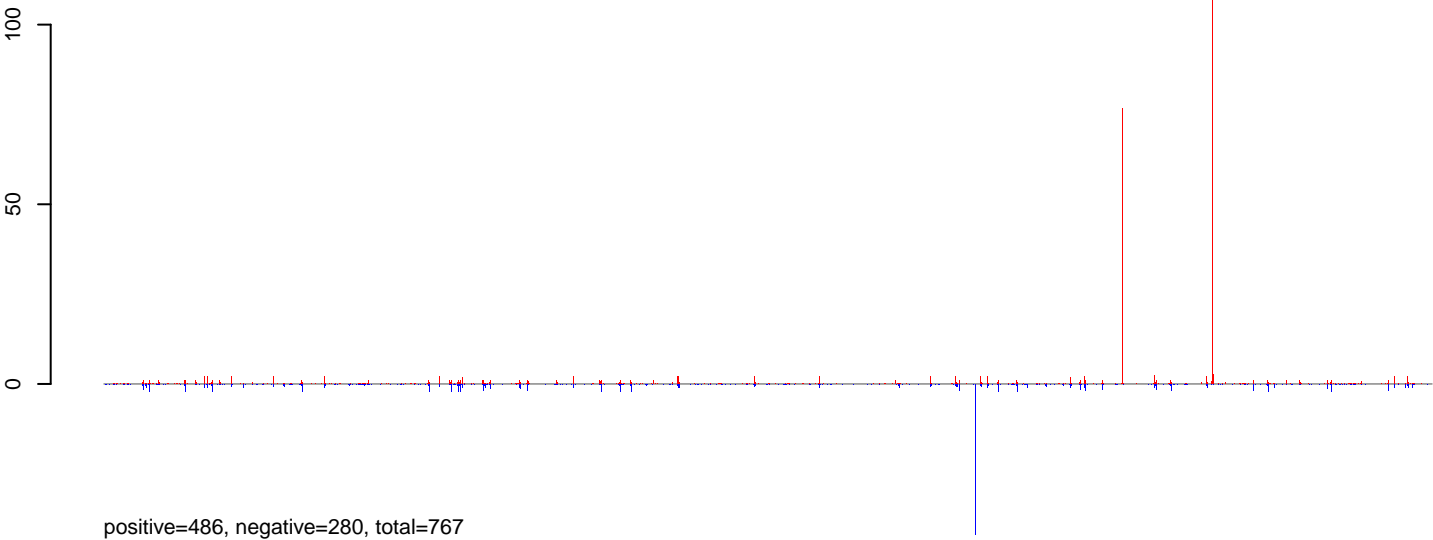


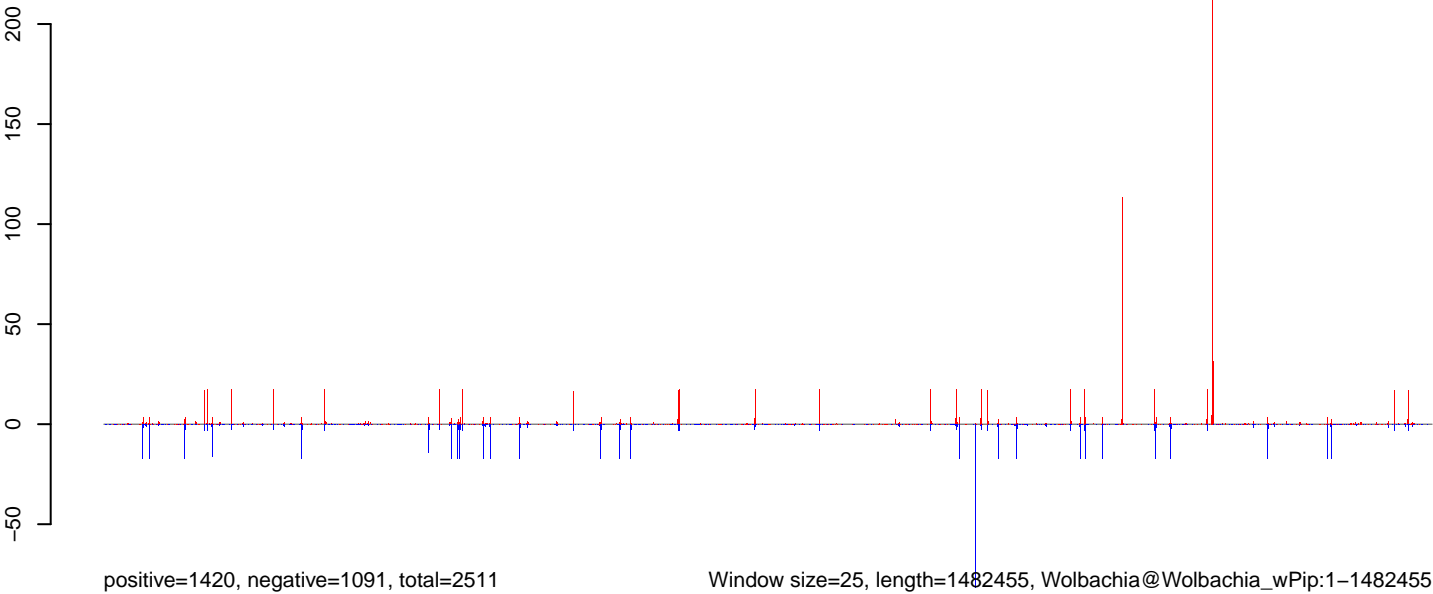
CuQuin_MG_7dpi3.18_23.rep



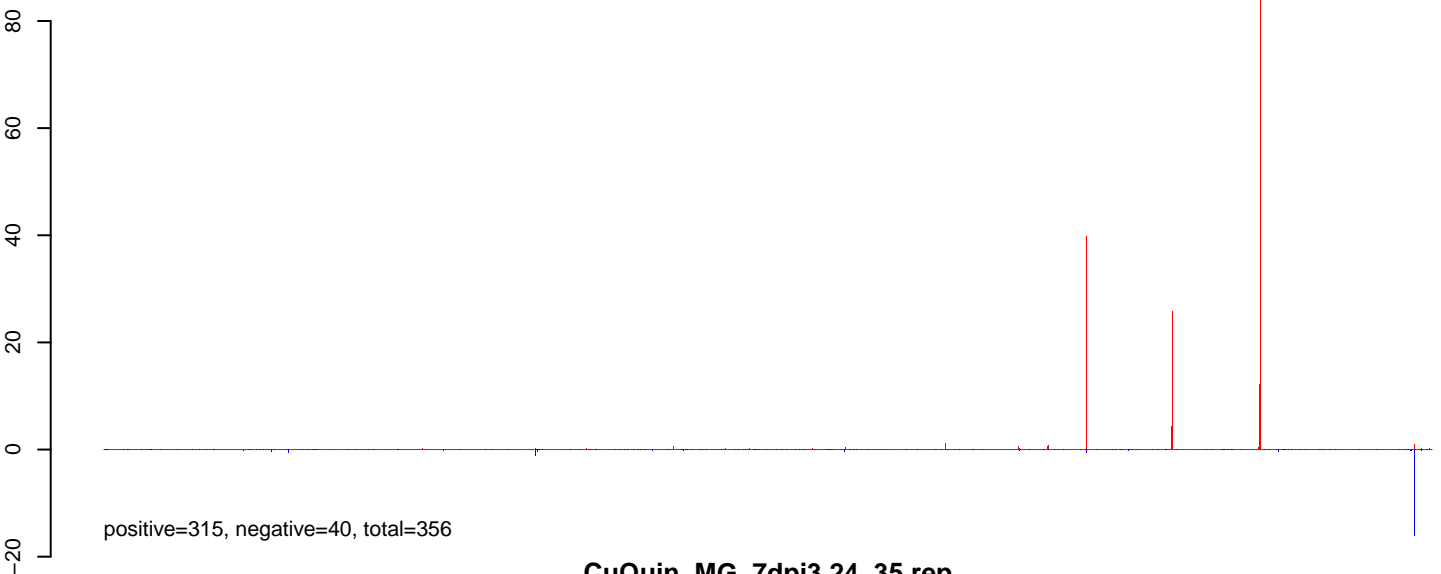
CuQuin_MG_7dpi3.24_35.rep



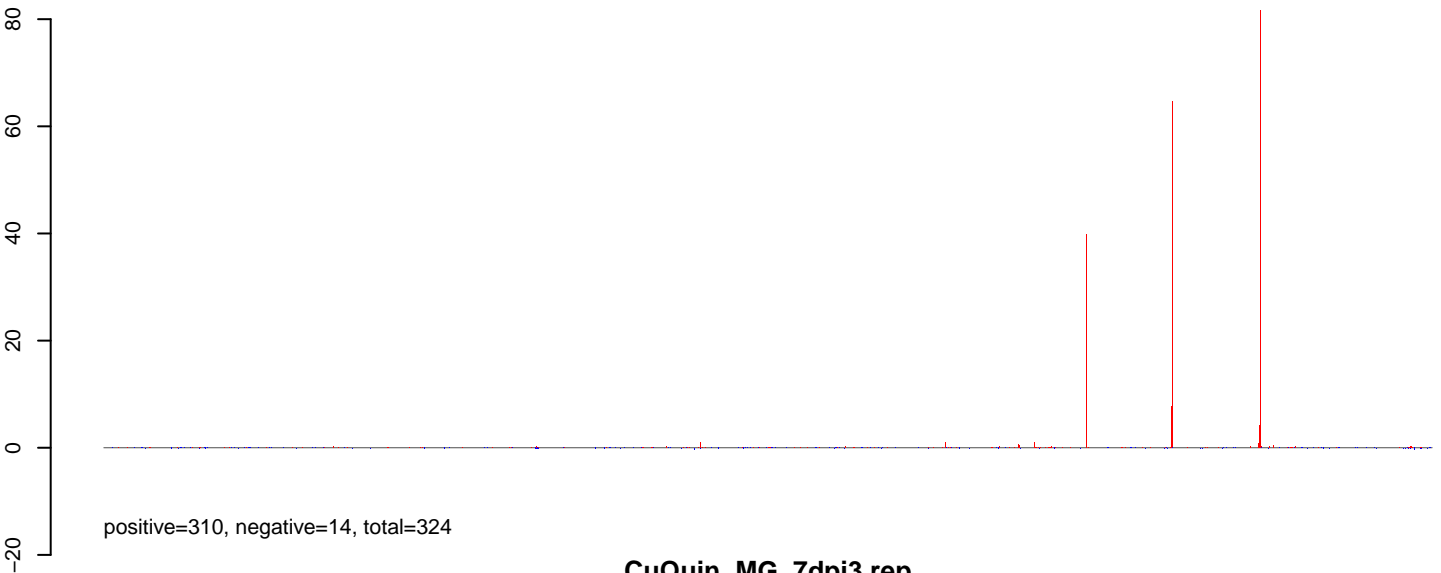
CuQuin_MG_7dpi3.rep



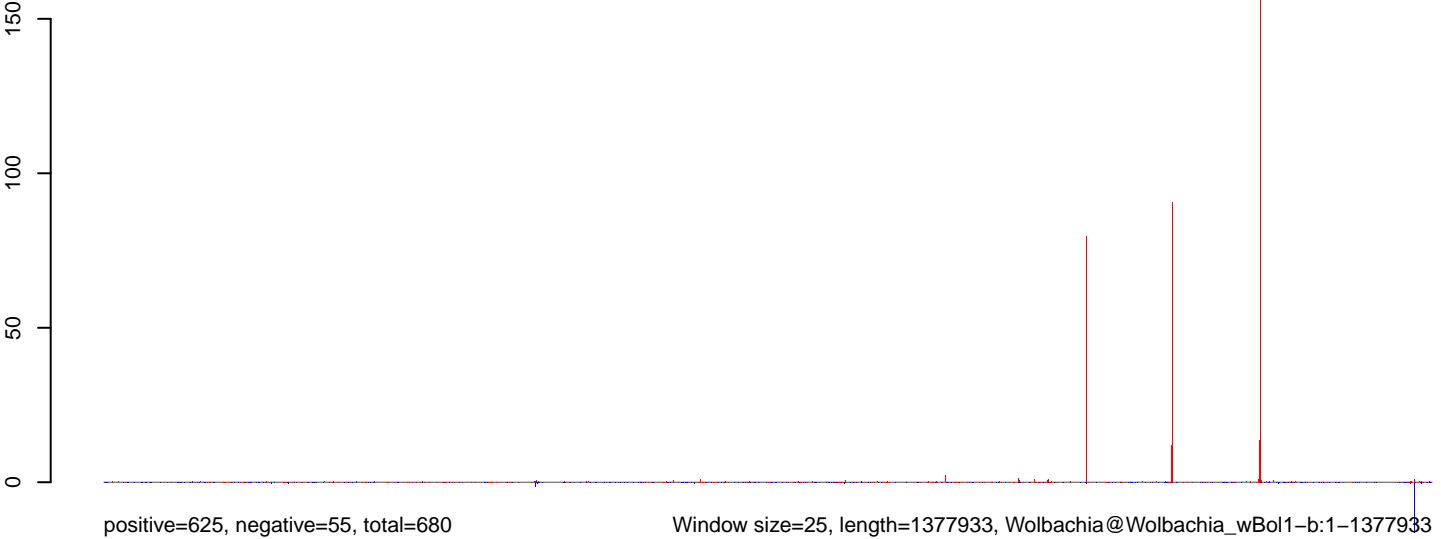
CuQuin_MG_7dpi3.18_23.rep



CuQuin_MG_7dpi3.24_35.rep

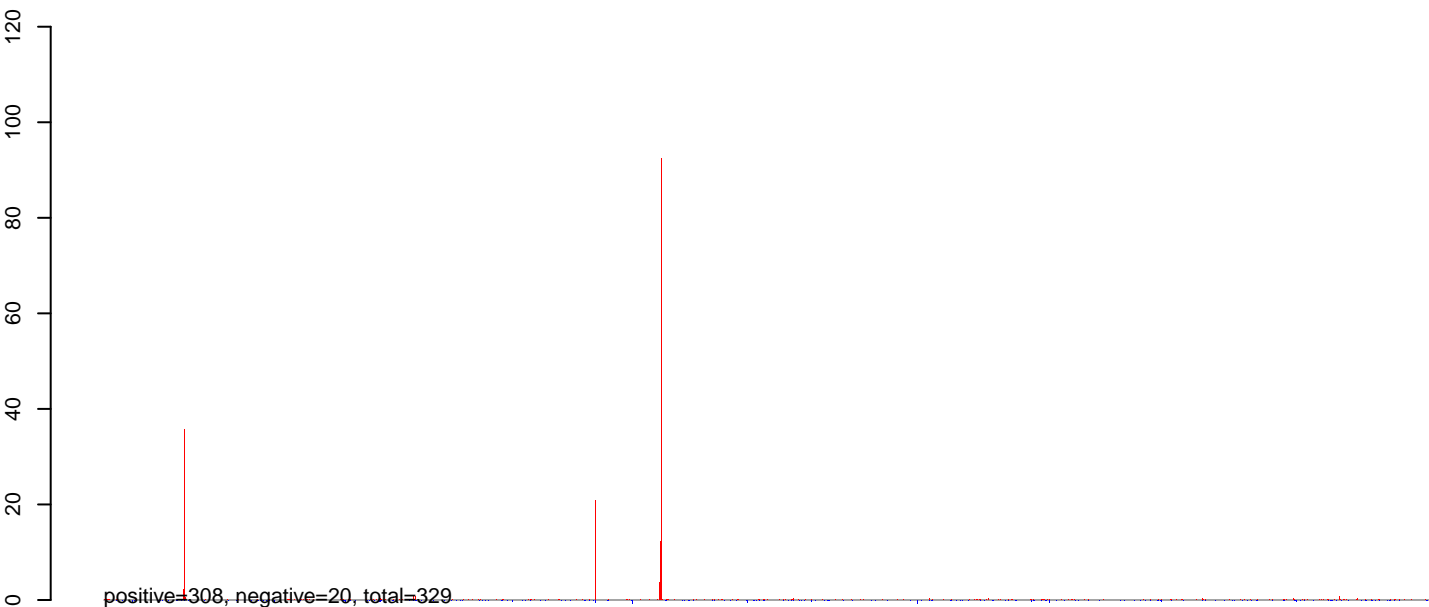


CuQuin_MG_7dpi3.rep

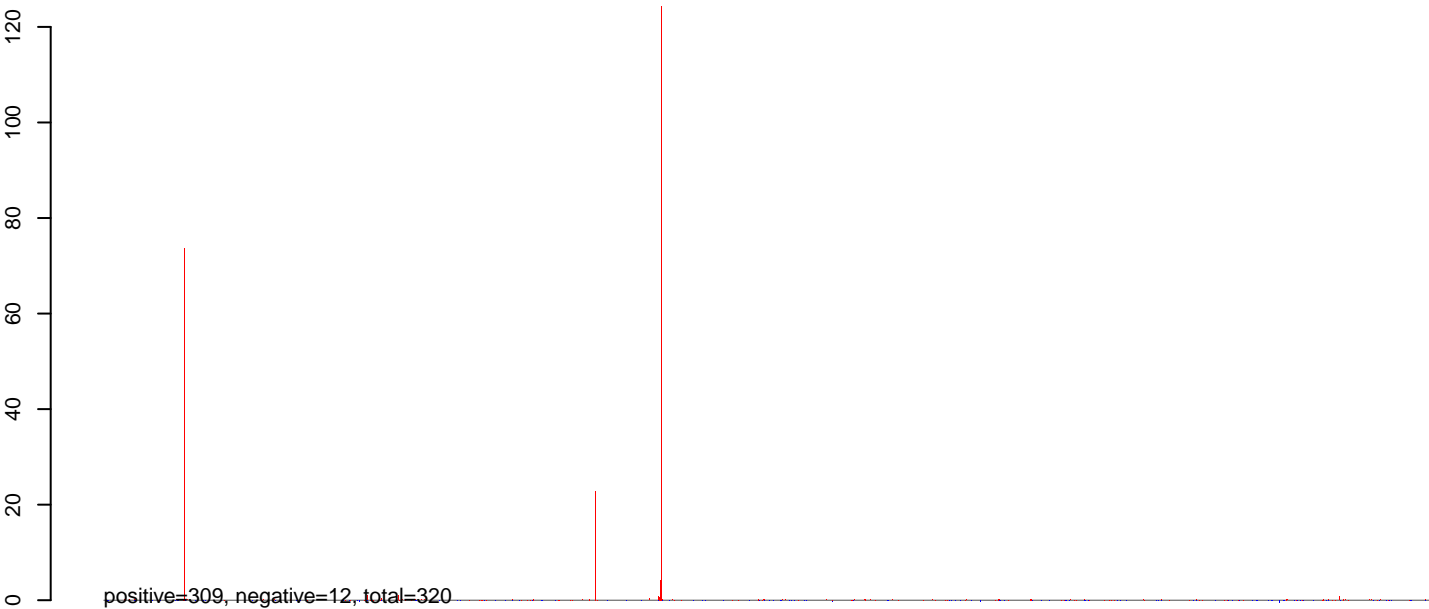


0 200000 400000 600000 800000 1000000 1200000 1400000

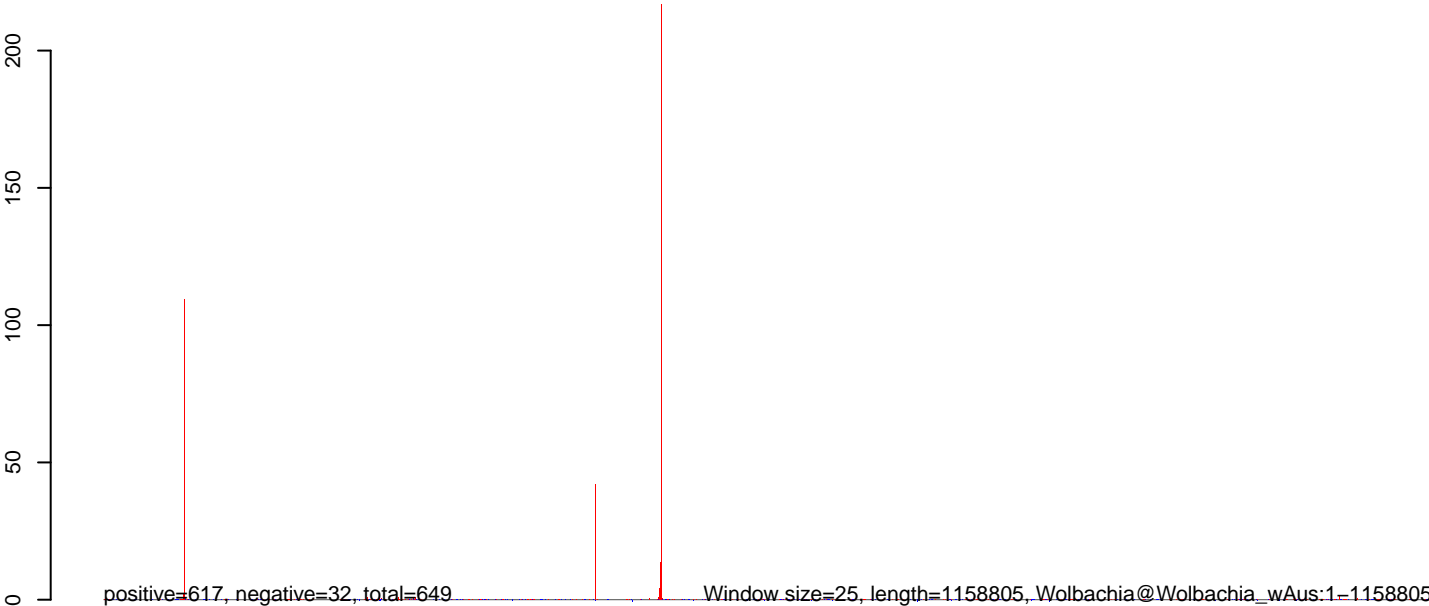
CuQuin_MG_7dpi3.18_23.rep



CuQuin_MG_7dpi3.24_35.rep

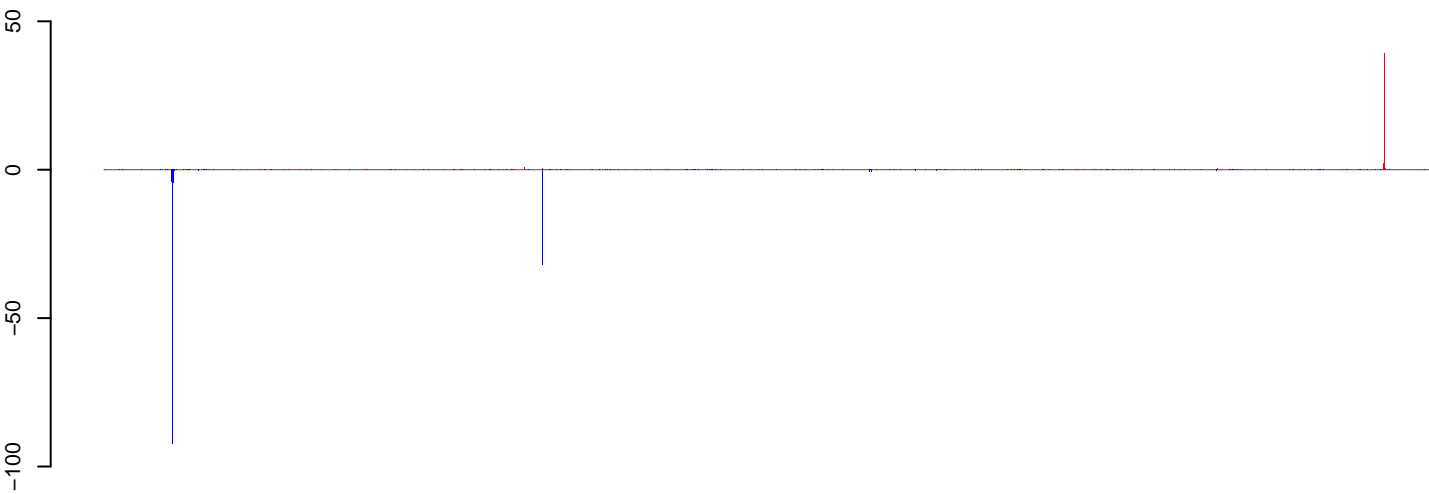


CuQuin_MG_7dpi3.rep



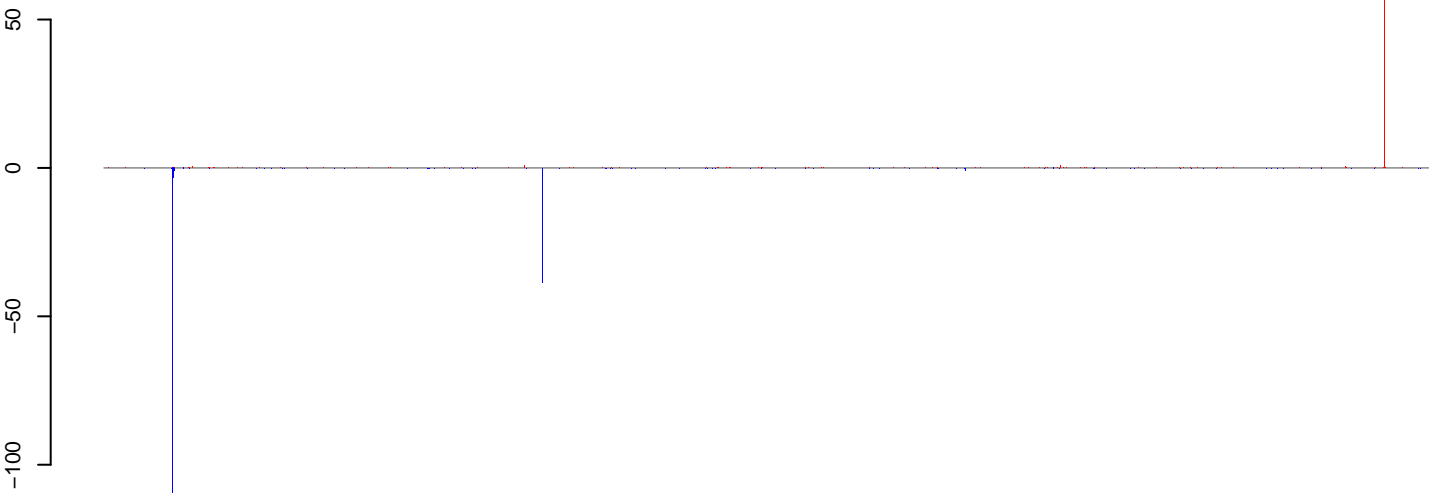
0 200000 400000 600000 800000 1000000 1200000

CuQuin_MG_7dpi3.18_23.rep



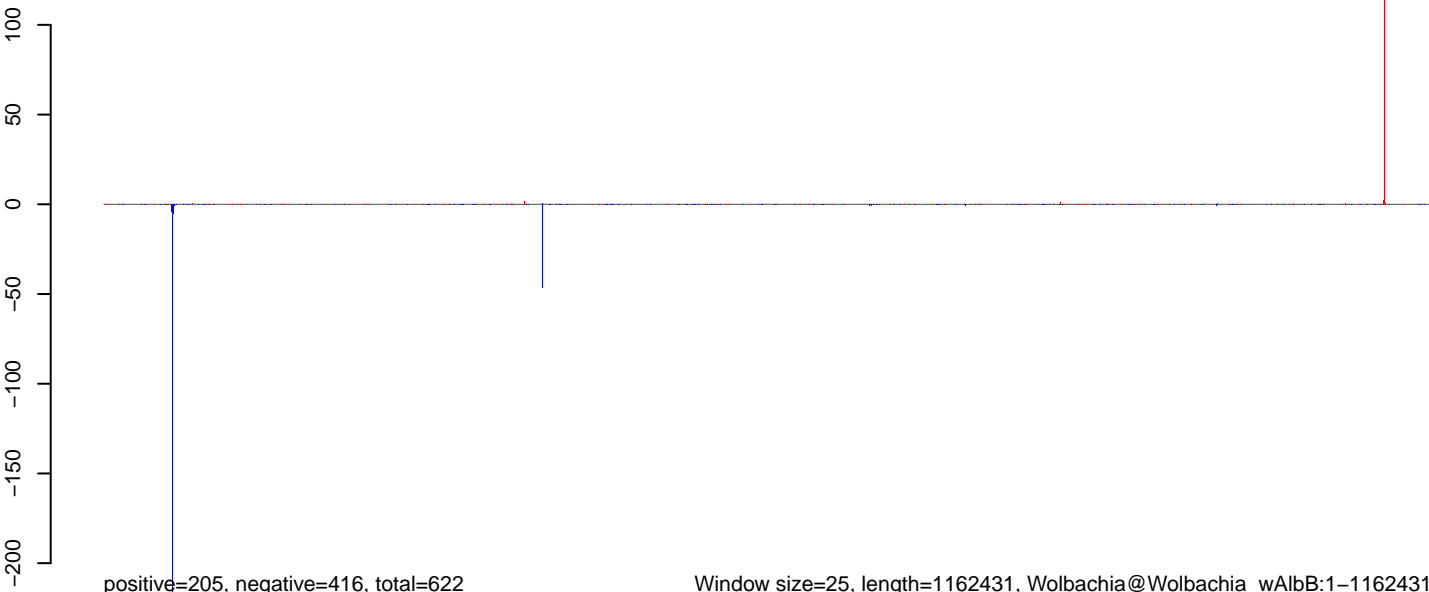
positive=88, negative=224, total=312

CuQuin_MG_7dpi3.24_35.rep



positive=117, negative=192, total=310

CuQuin_MG_7dpi3.rep



positive=205, negative=416, total=622

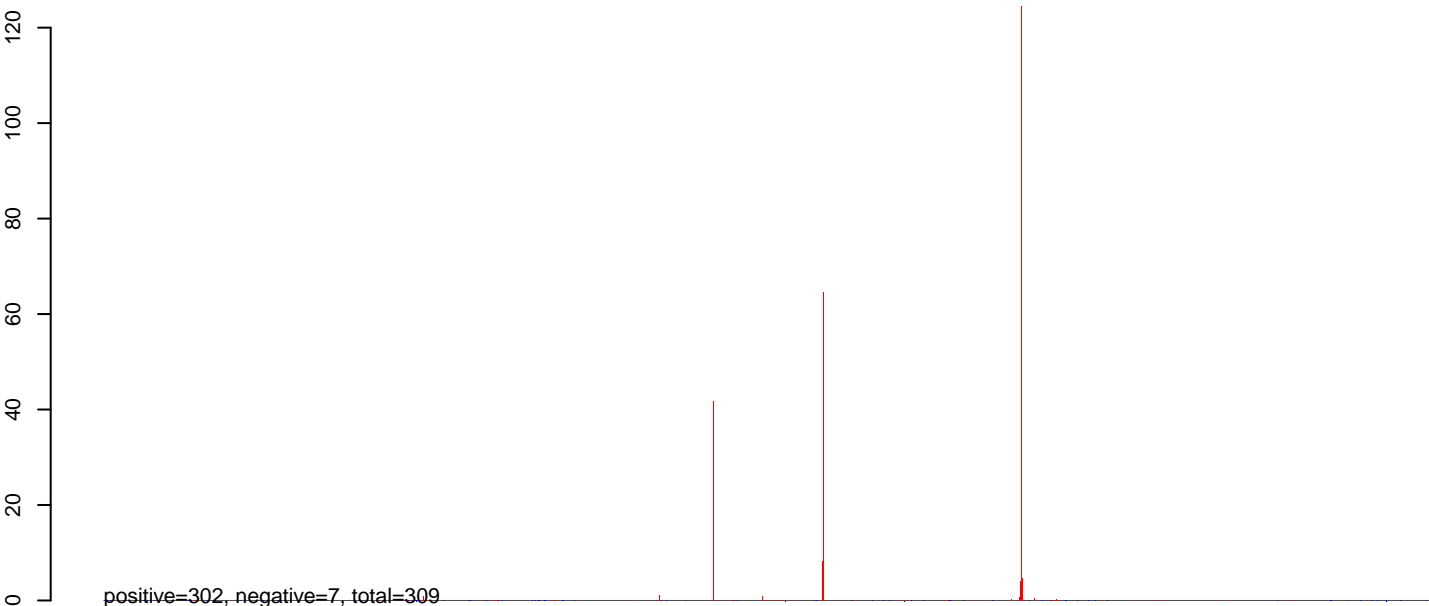
Window size=25, length=1162431, Wolbachia@Wolbachia_wAlbB:1-1162431

0 200000 400000 600000 800000 1000000 1200000

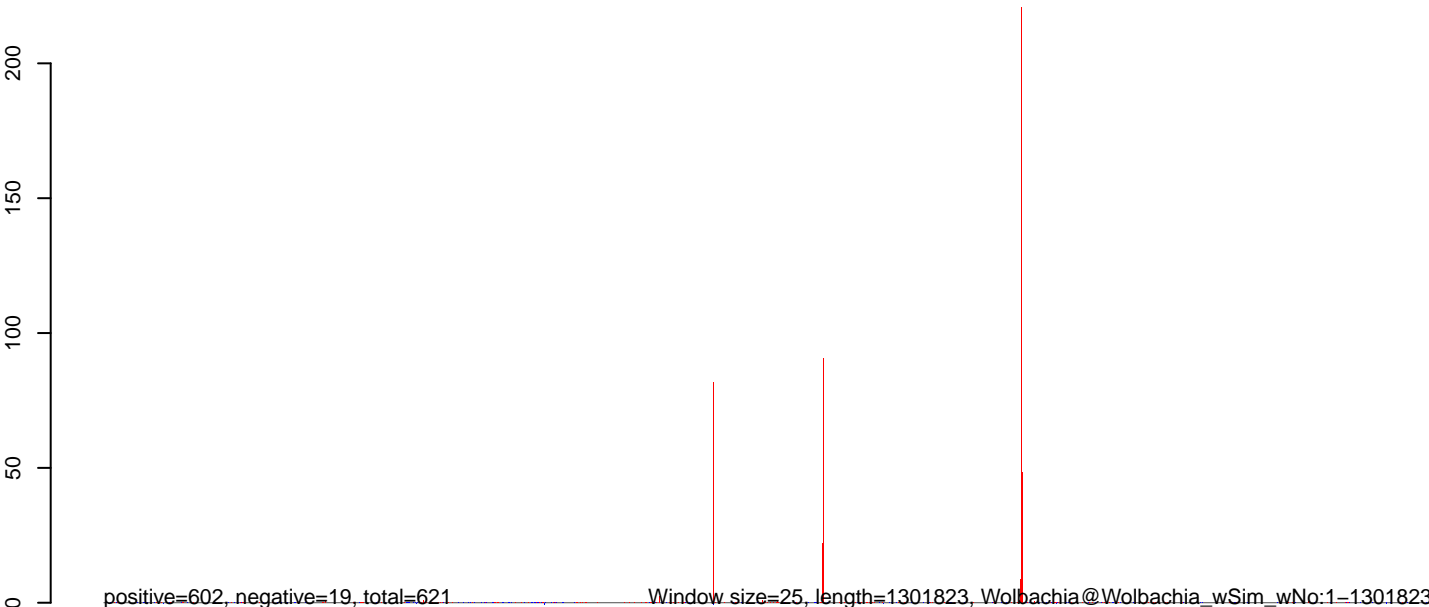
CuQuin_MG_7dpi3.18_23.rep



CuQuin_MG_7dpi3.24_35.rep

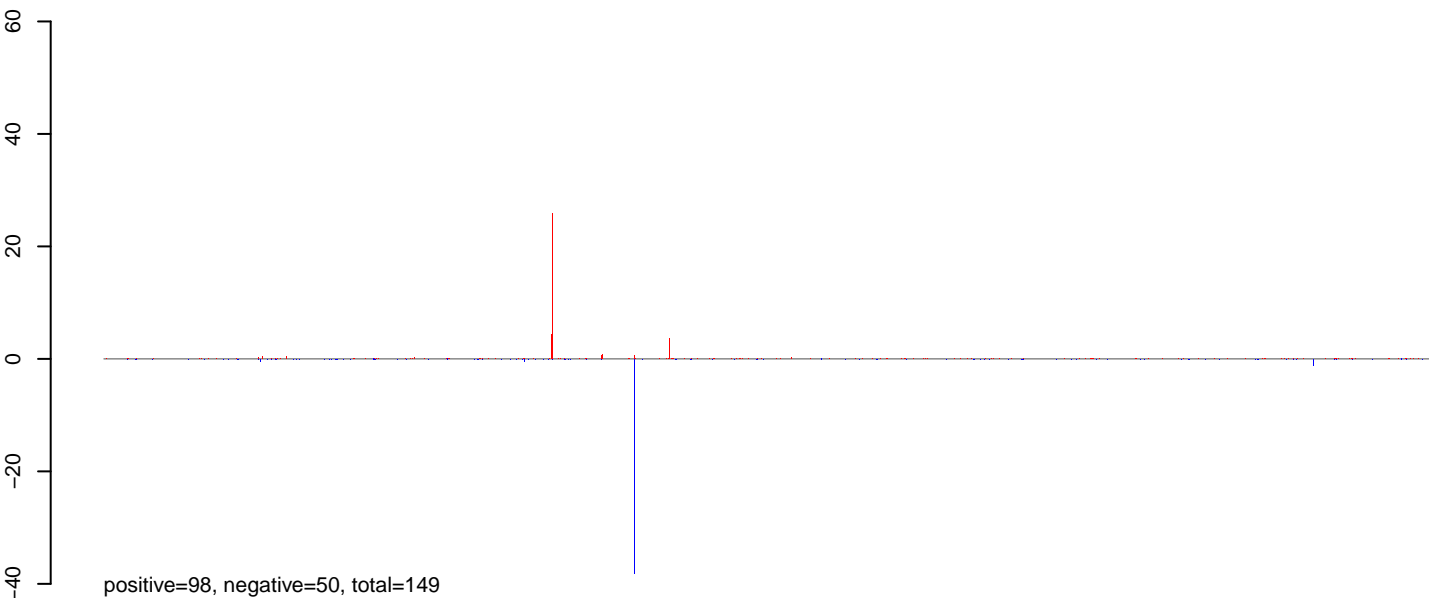


CuQuin_MG_7dpi3.rep

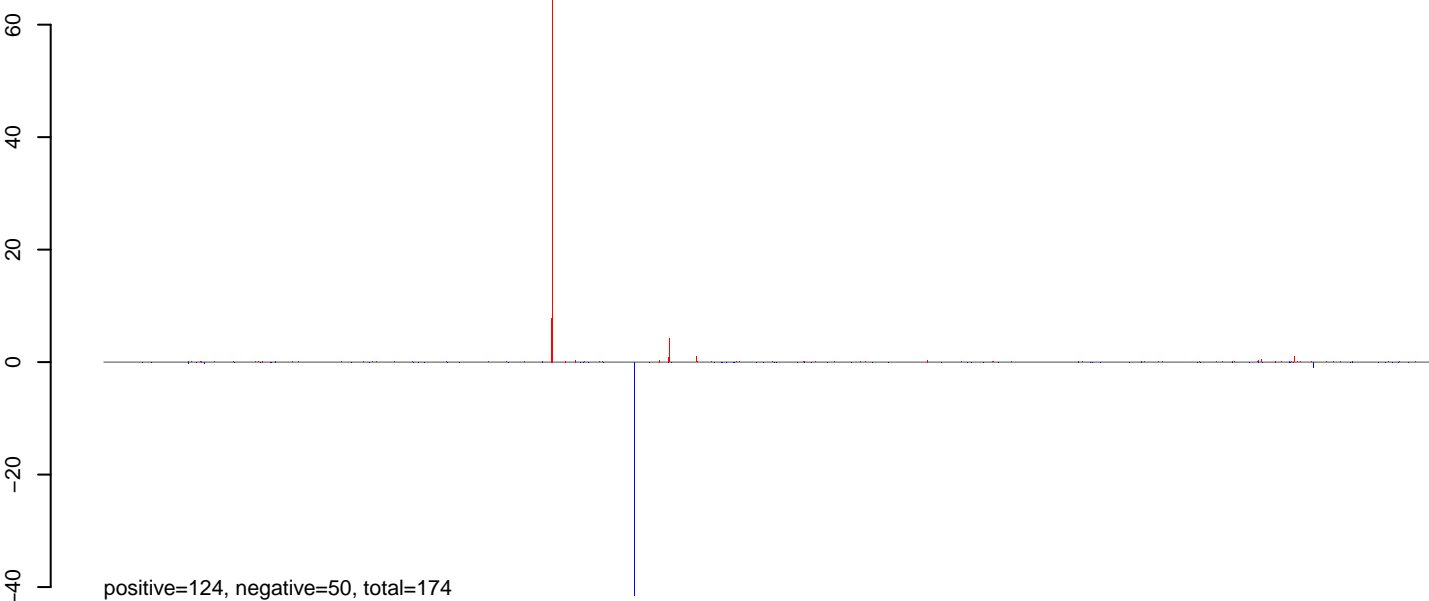


0 200000 400000 600000 800000 1000000 1200000

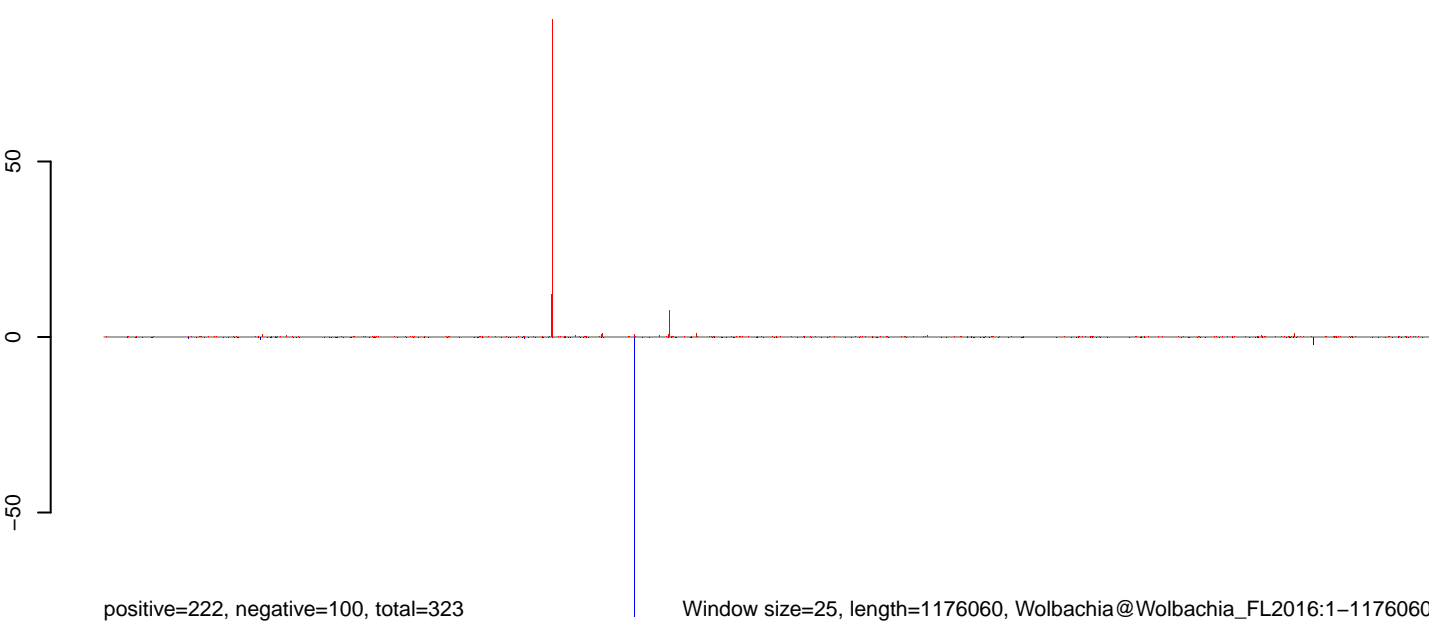
CuQuin_MG_7dpi3.18_23.rep



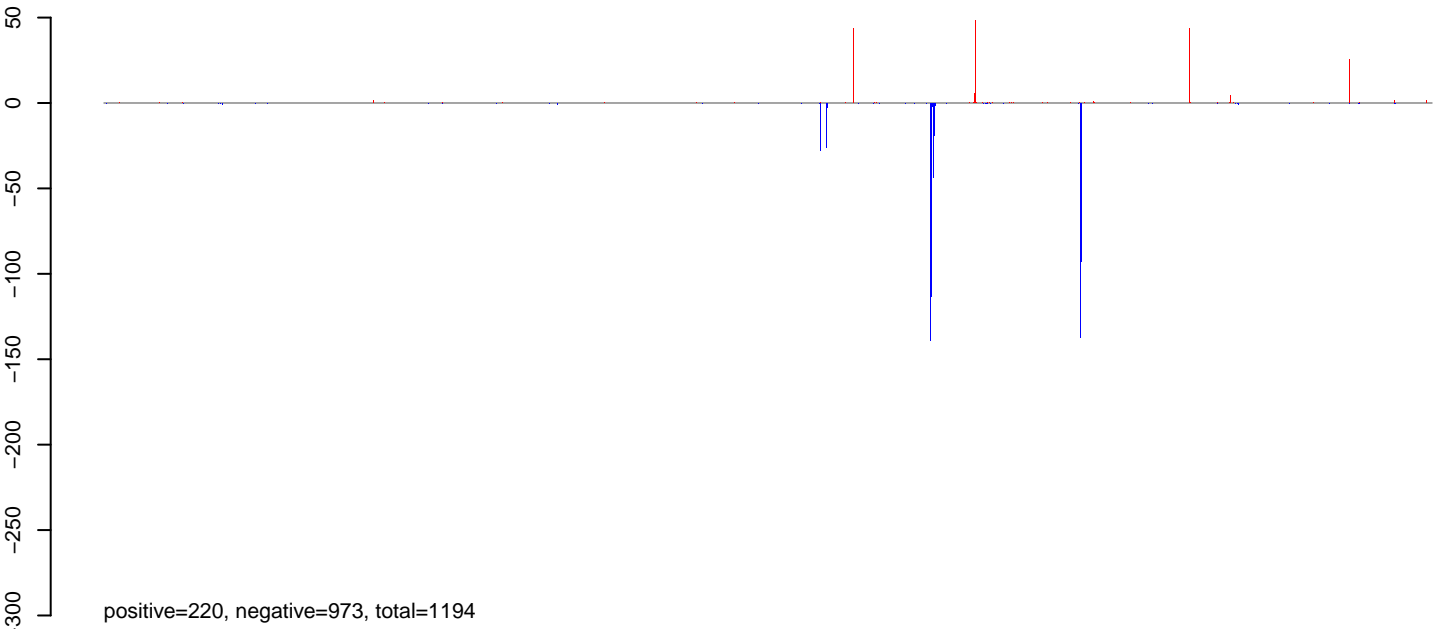
CuQuin_MG_7dpi3.24_35.rep



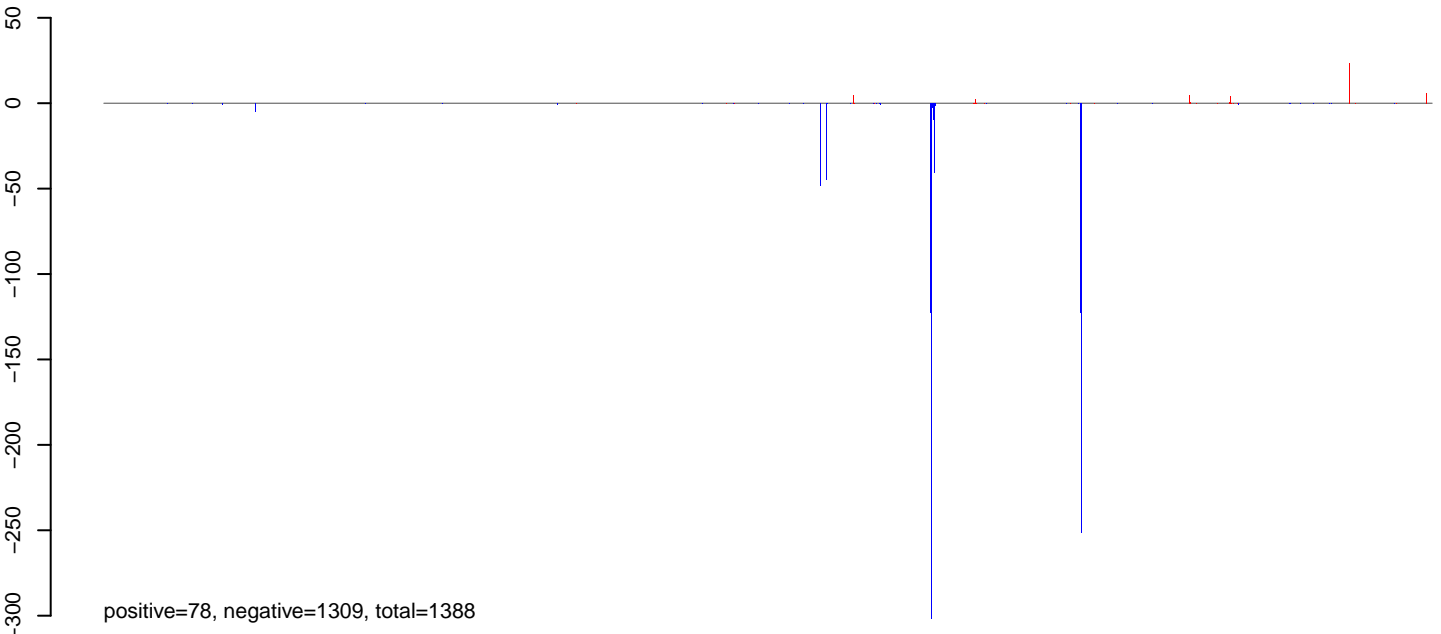
CuQuin_MG_7dpi3.rep



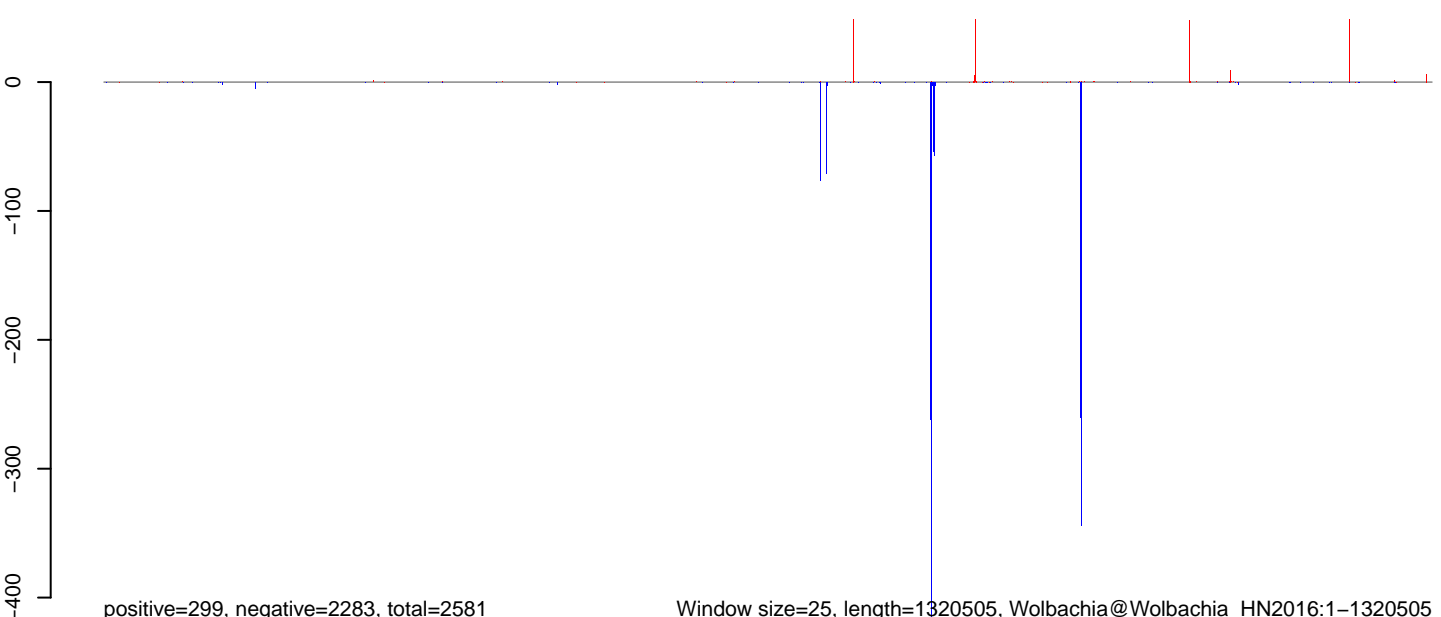
CuQuin_MG_7dpi3.18_23.rep



CuQuin_MG_7dpi3.24_35.rep

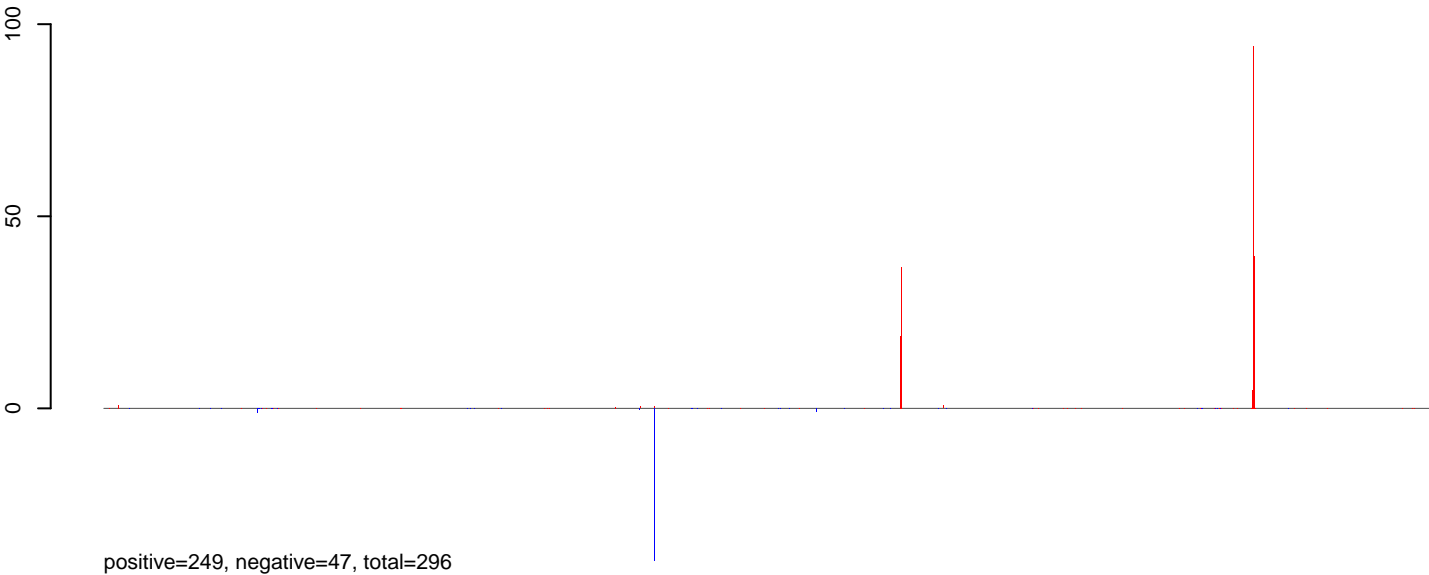


CuQuin_MG_7dpi3.rep

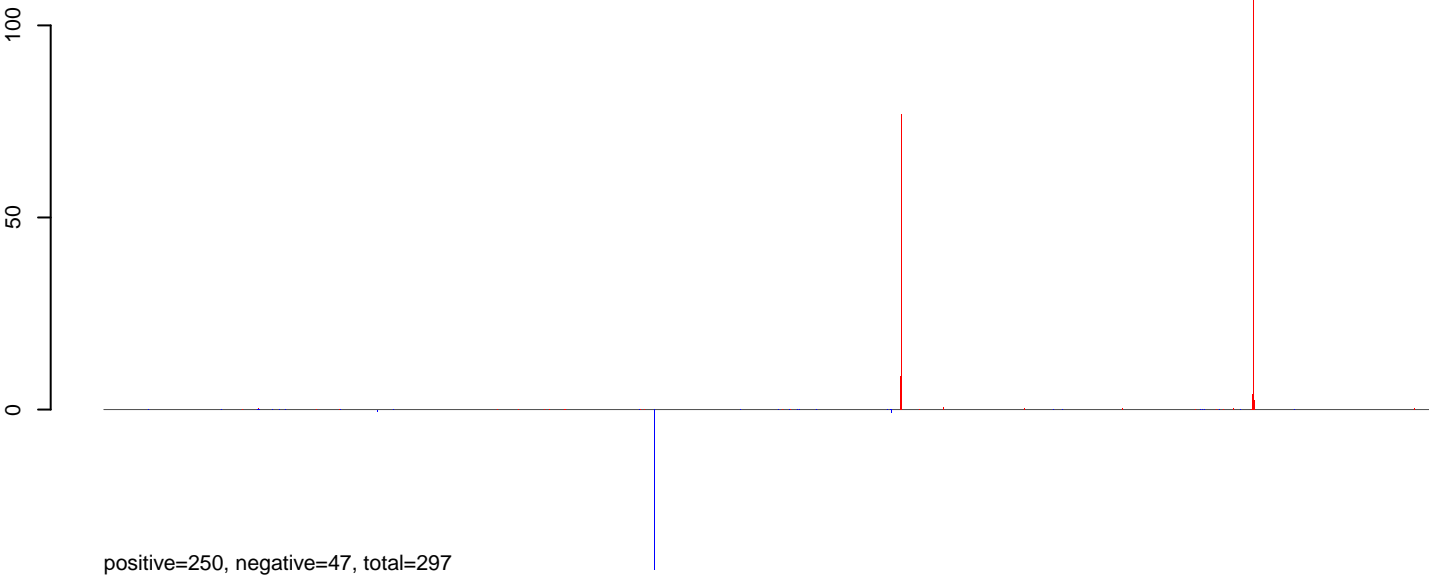


0 200000 400000 600000 800000 1000000 1200000

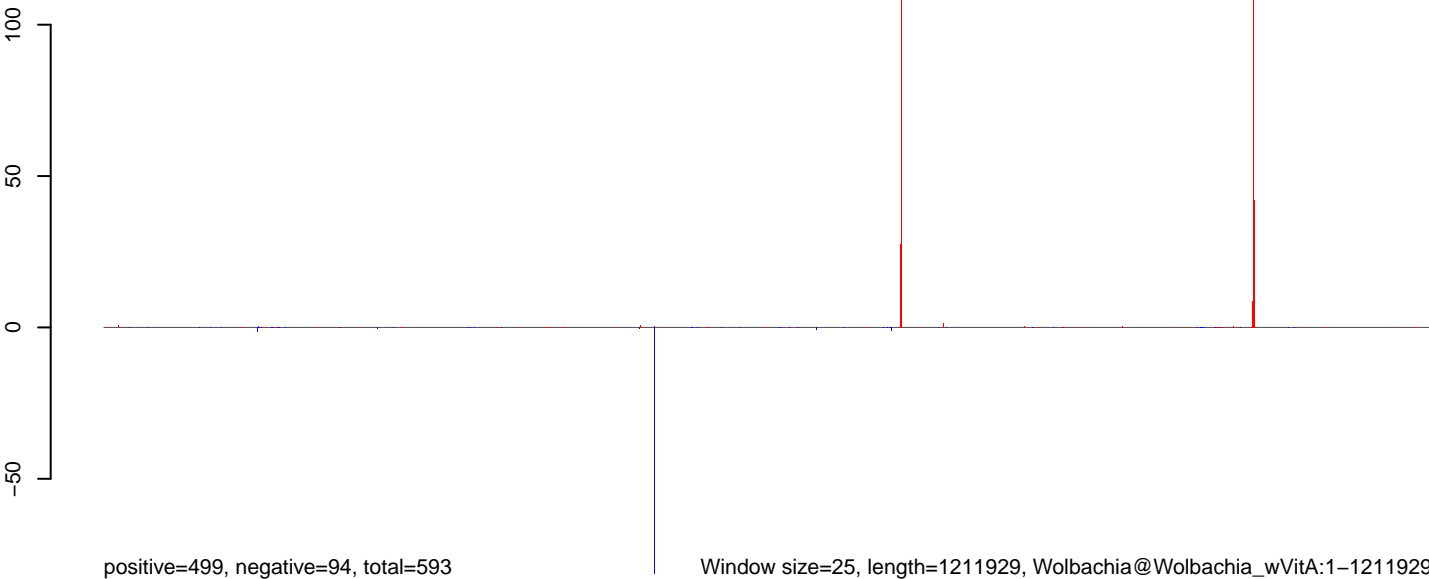
CuQuin_MG_7dpi3.18_23.rep



CuQuin_MG_7dpi3.24_35.rep



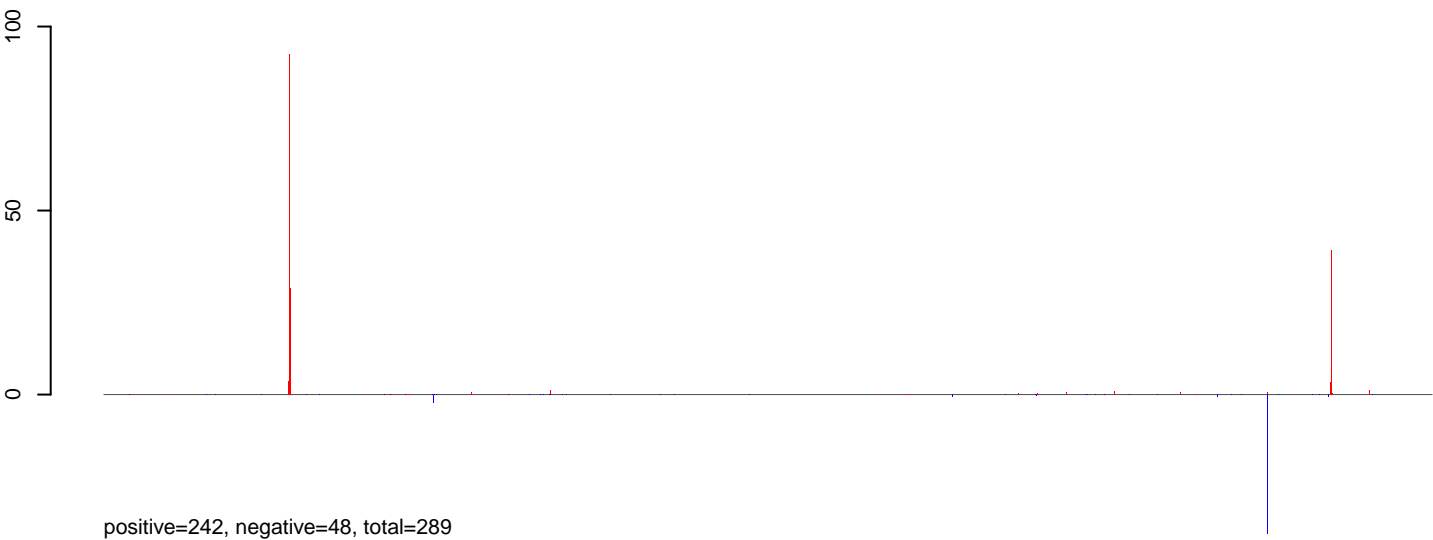
CuQuin_MG_7dpi3.rep



Window size=25, length=1211929, Wolbachia@Wolbachia_wVitA:1-1211929

0 200000 400000 600000 800000 1000000 1200000

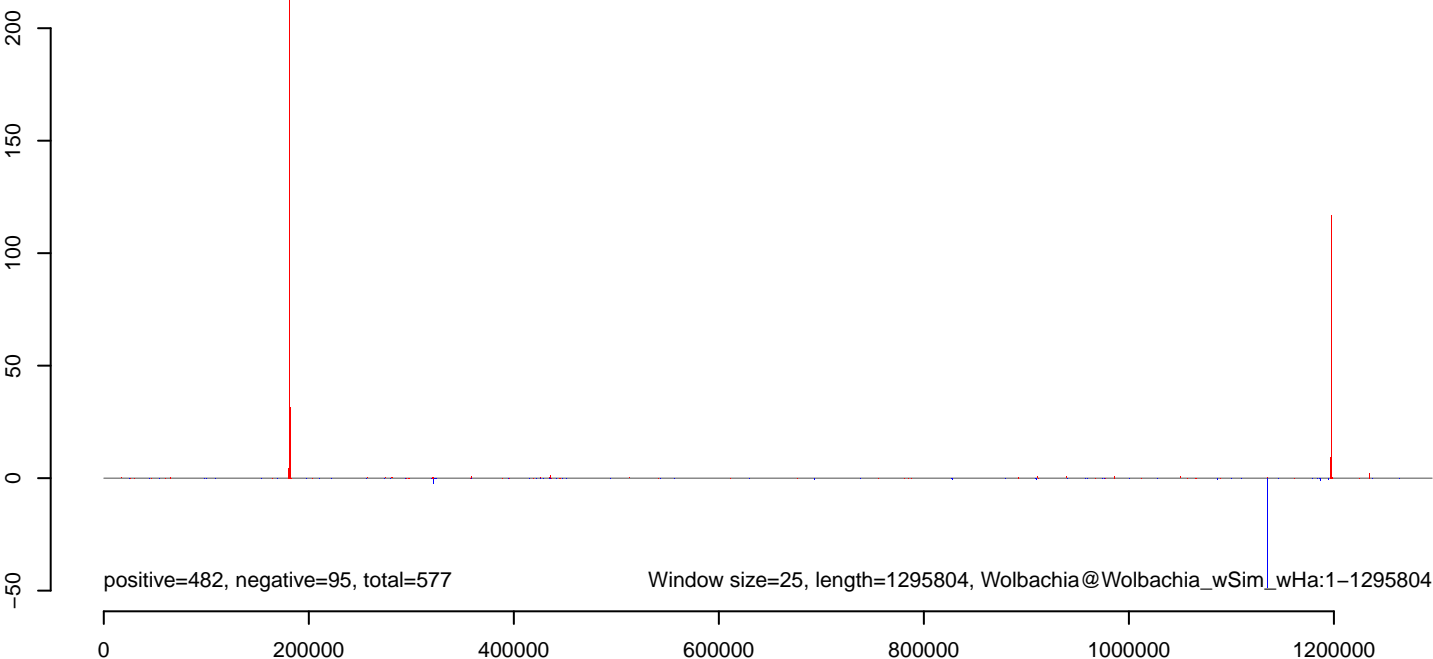
CuQuin_MG_7dpi3.18_23.rep



CuQuin_MG_7dpi3.24_35.rep



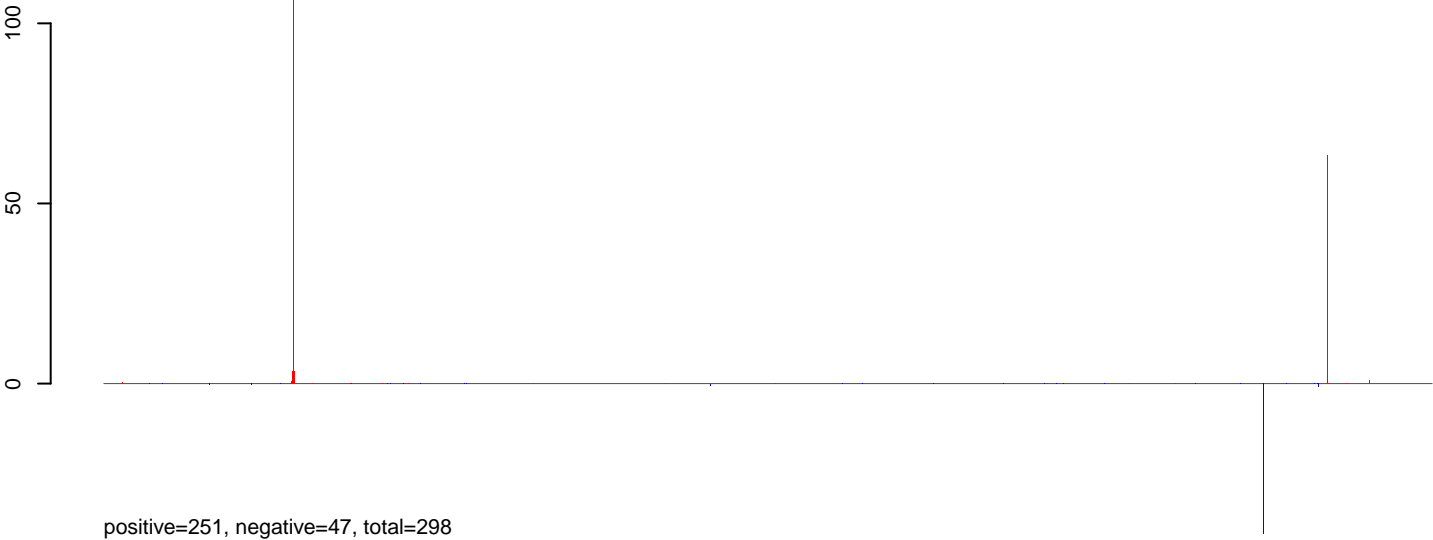
CuQuin_MG_7dpi3.rep



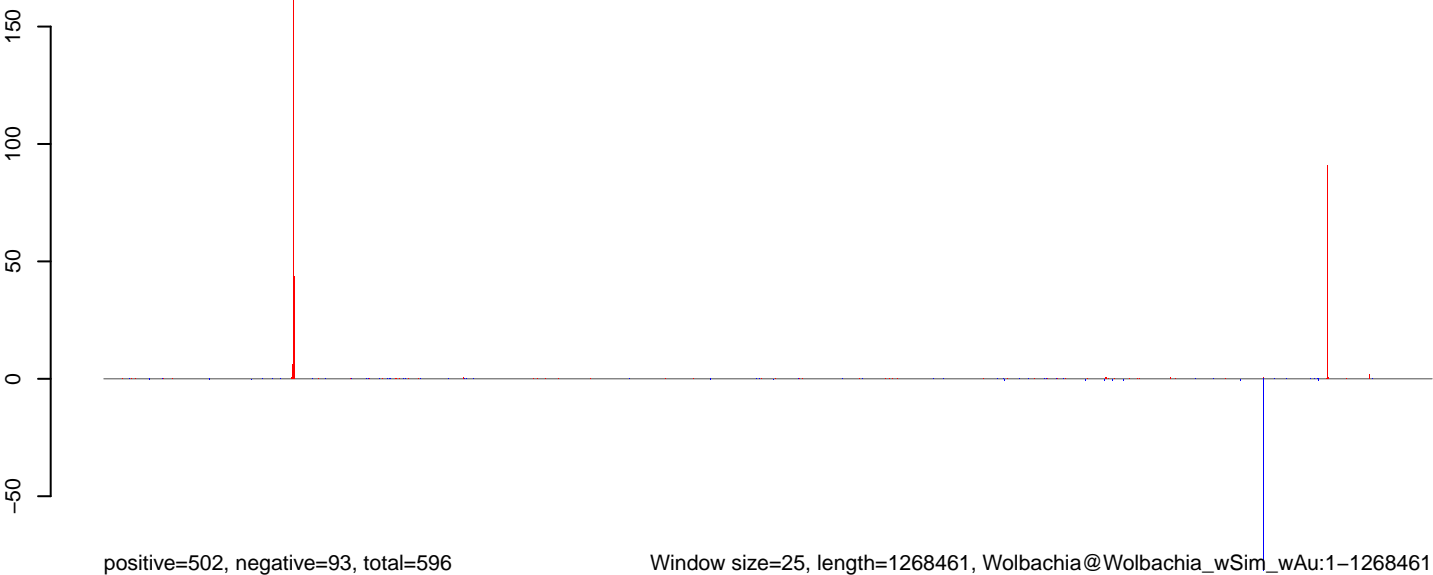
CuQuin_MG_7dpi3.18_23.rep



CuQuin_MG_7dpi3.24_35.rep



CuQuin_MG_7dpi3.rep



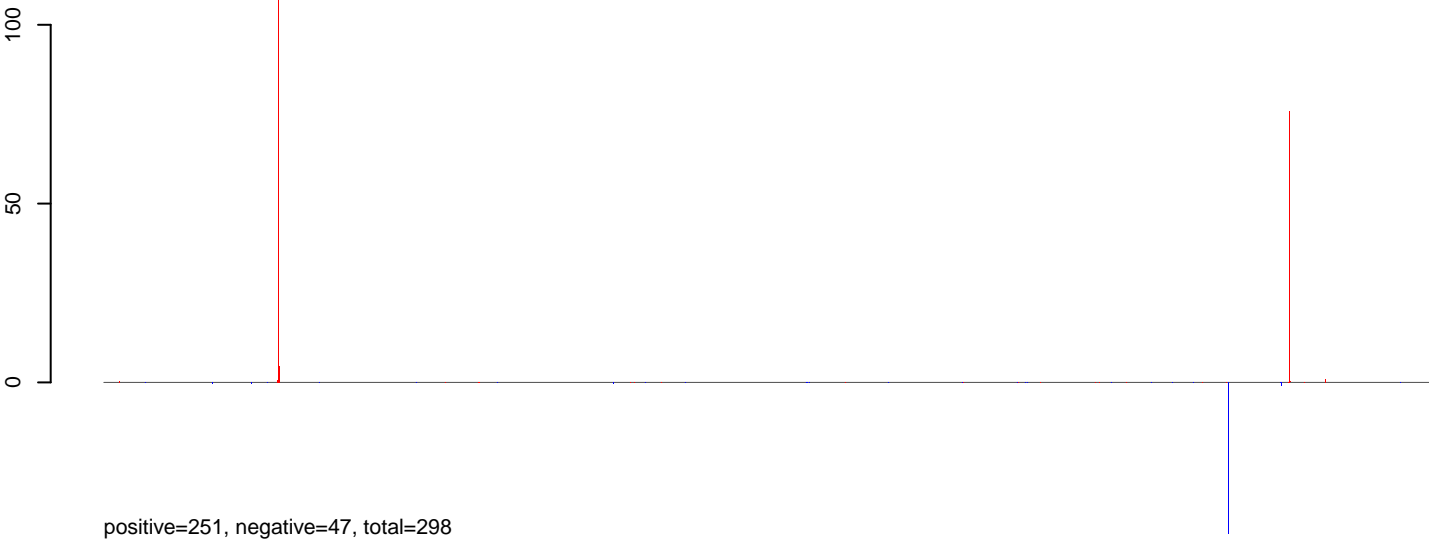
Window size=25, length=1268461, Wolbachia@Wolbachia_wSim_wAu:1-1268461

0 200000 400000 600000 800000 1000000 1200000

CuQuin_MG_7dpi3.18_23.rep



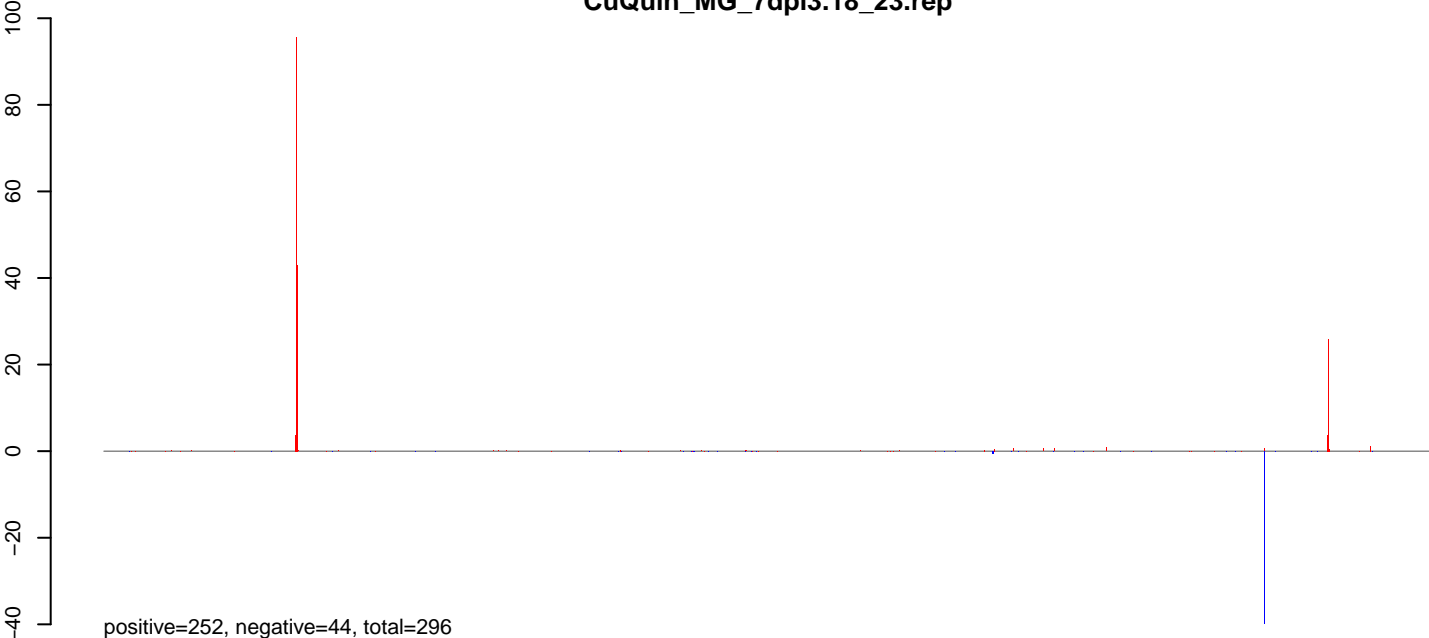
CuQuin_MG_7dpi3.24_35.rep



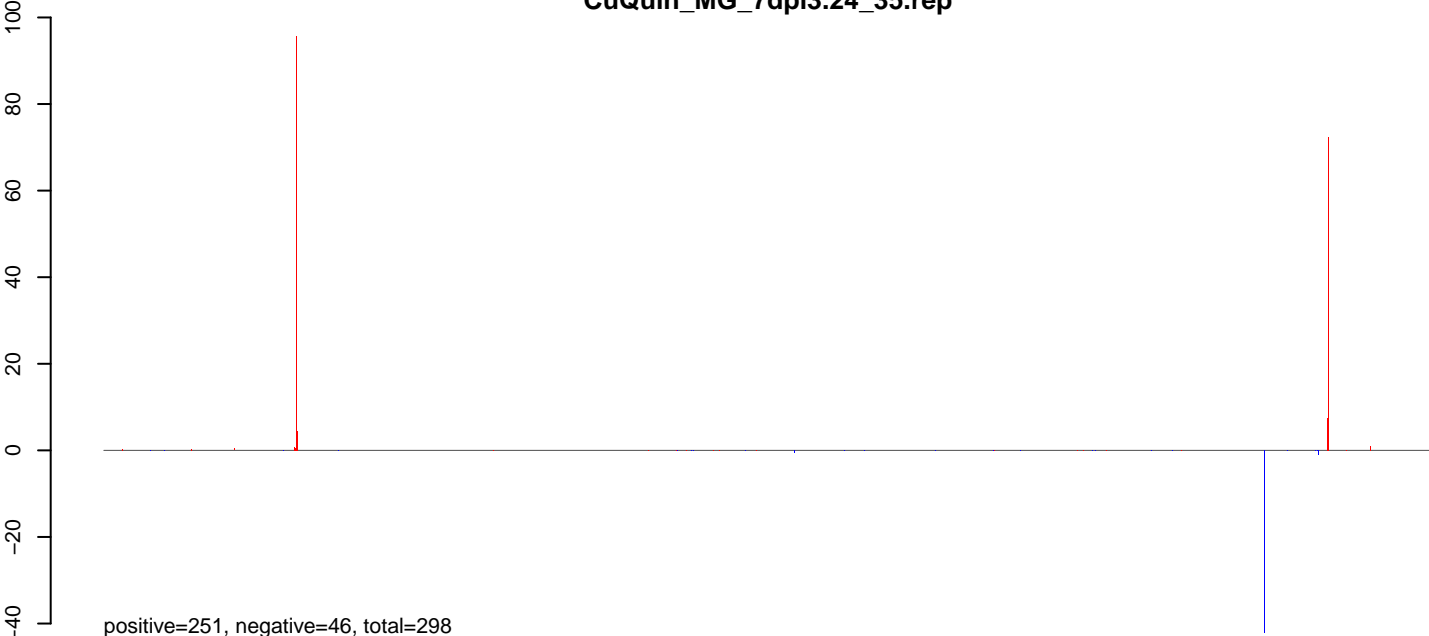
CuQuin_MG_7dpi3.rep



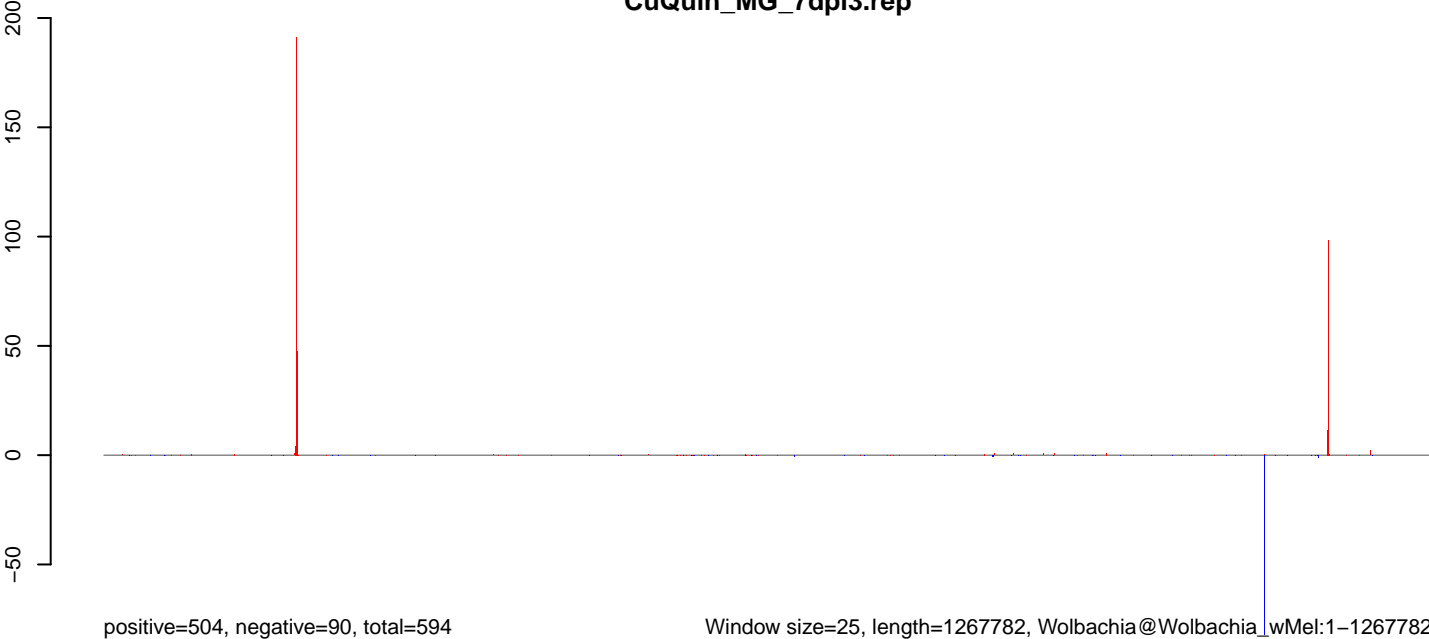
CuQuin_MG_7dpi3.18_23.rep



CuQuin_MG_7dpi3.24_35.rep



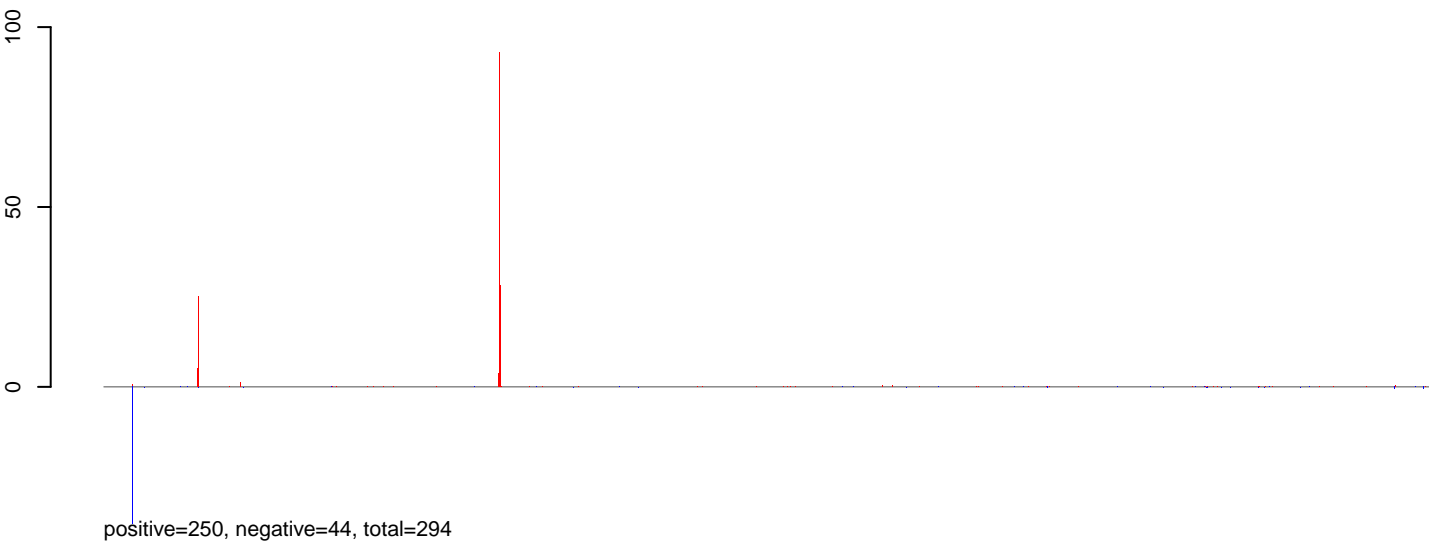
CuQuin_MG_7dpi3.rep



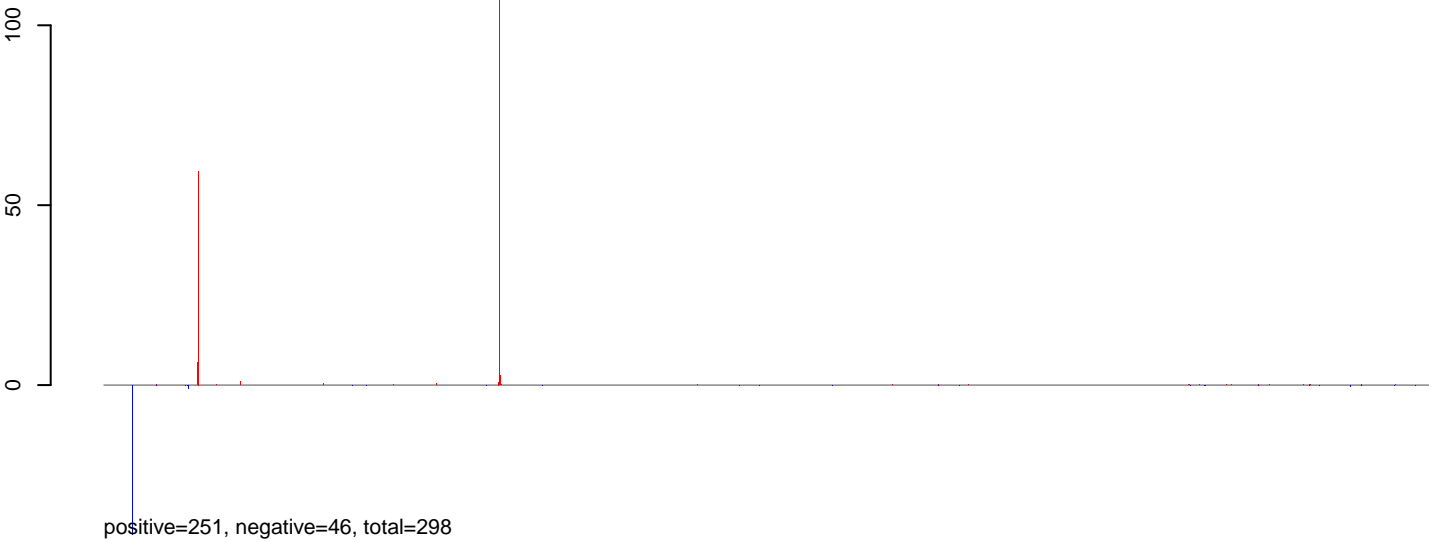
Window size=25, length=1267782, Wolbachia@Wolbachia_wMel:1-1267782

0 200000 400000 600000 800000 1000000 1200000

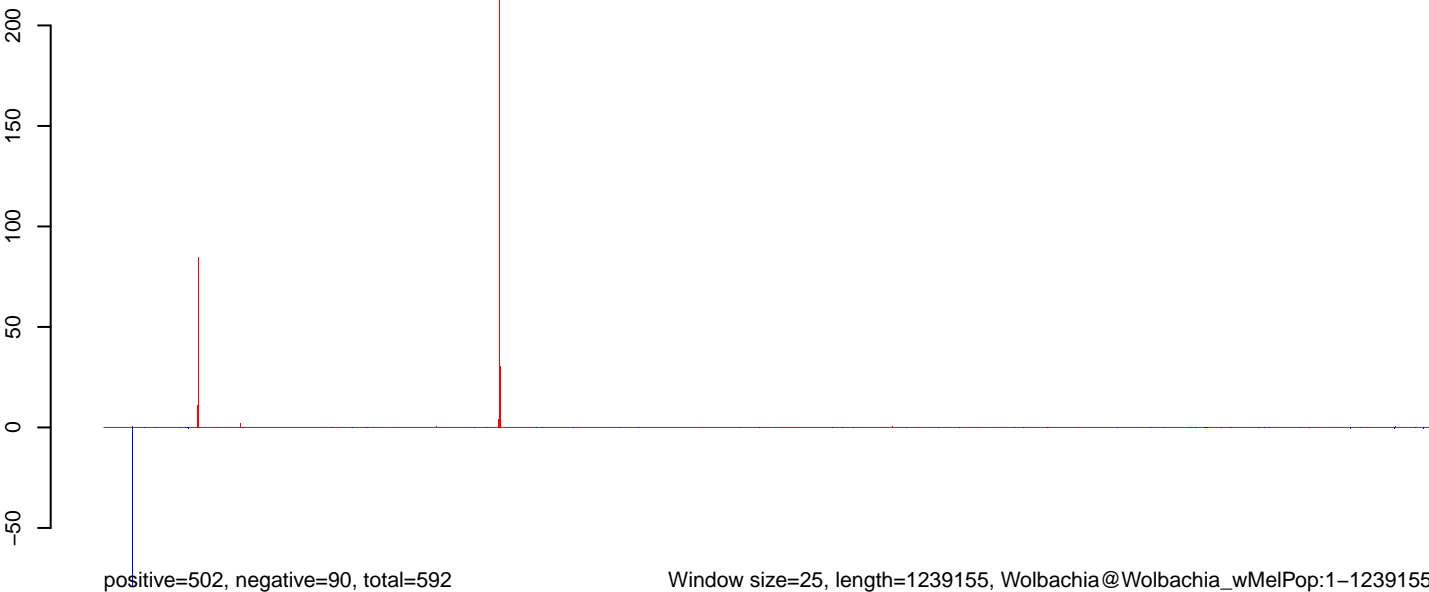
CuQuin_MG_7dpi3.18_23.rep



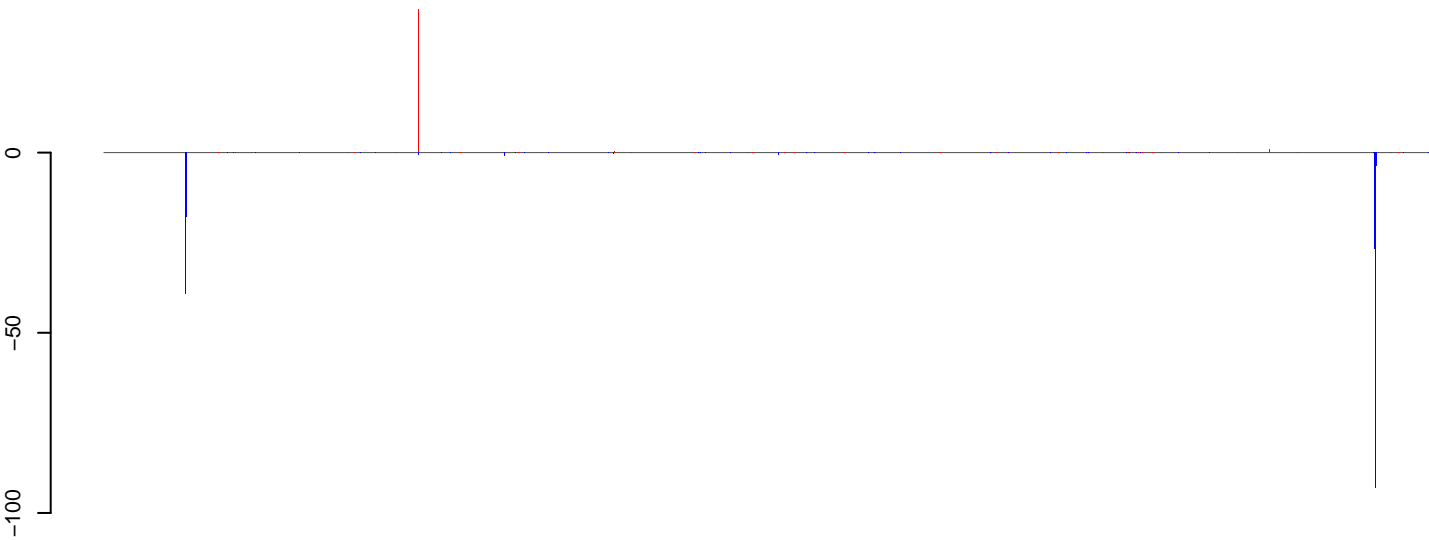
CuQuin_MG_7dpi3.24_35.rep



CuQuin_MG_7dpi3.rep

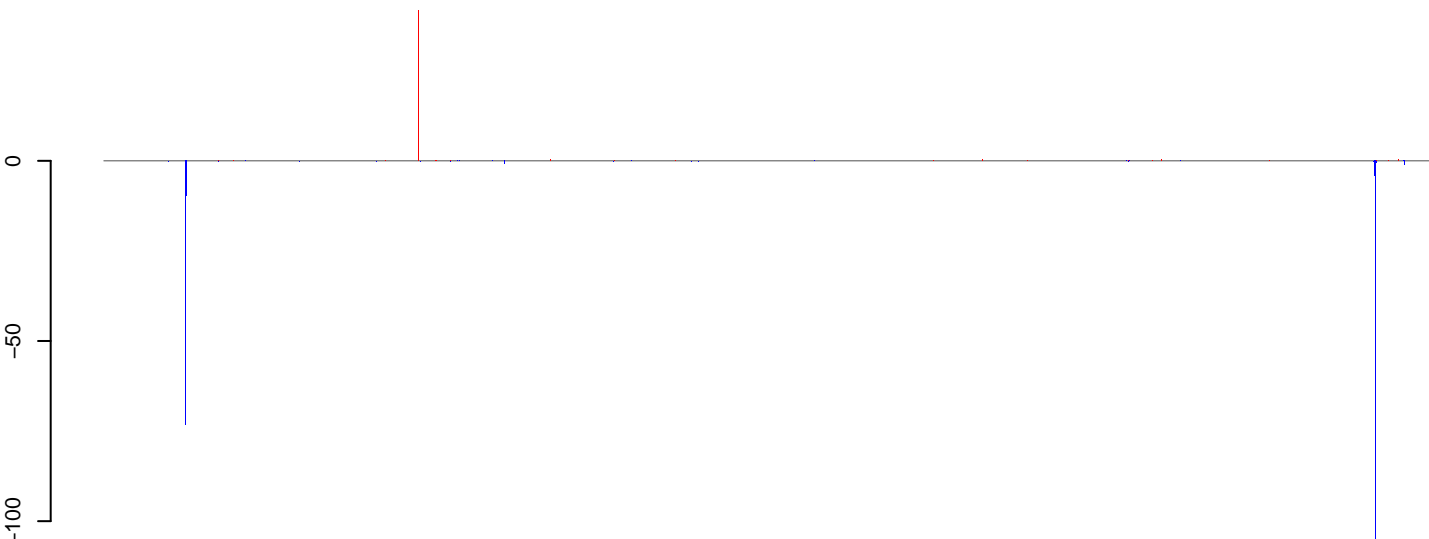


CuQuin_MG_7dpi3.18_23.rep



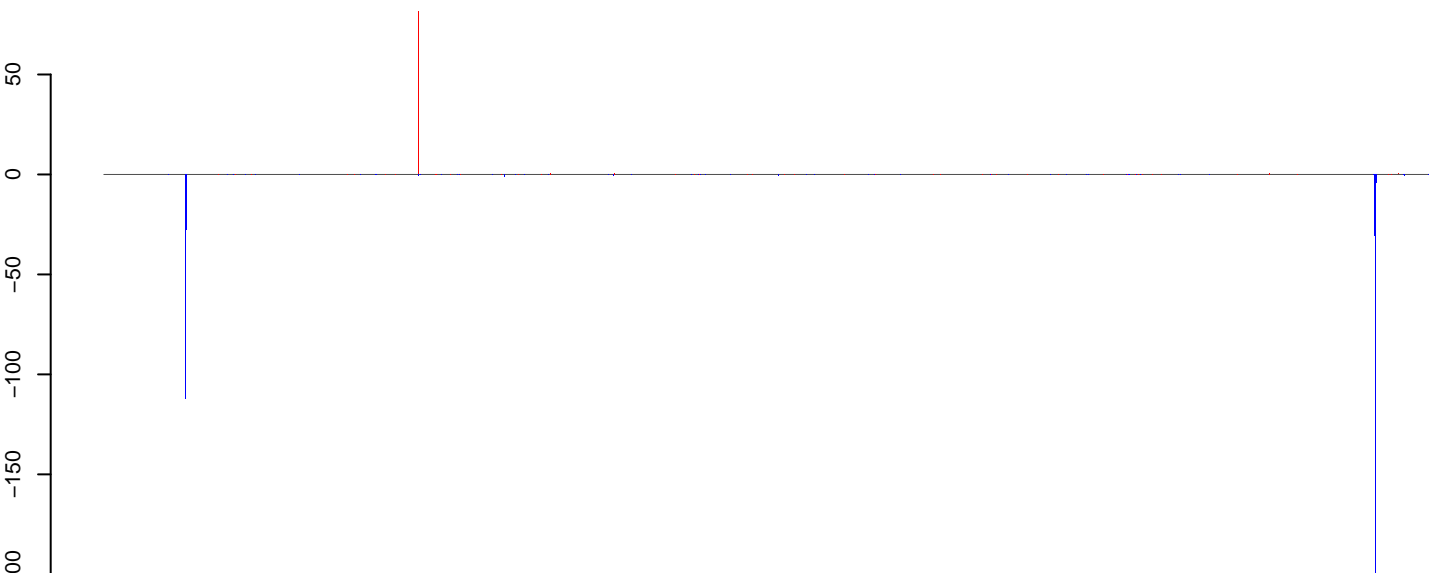
positive=44, negative=252, total=297

CuQuin_MG_7dpi3.24_35.rep



positive=46, negative=252, total=298

CuQuin_MG_7dpi3.rep

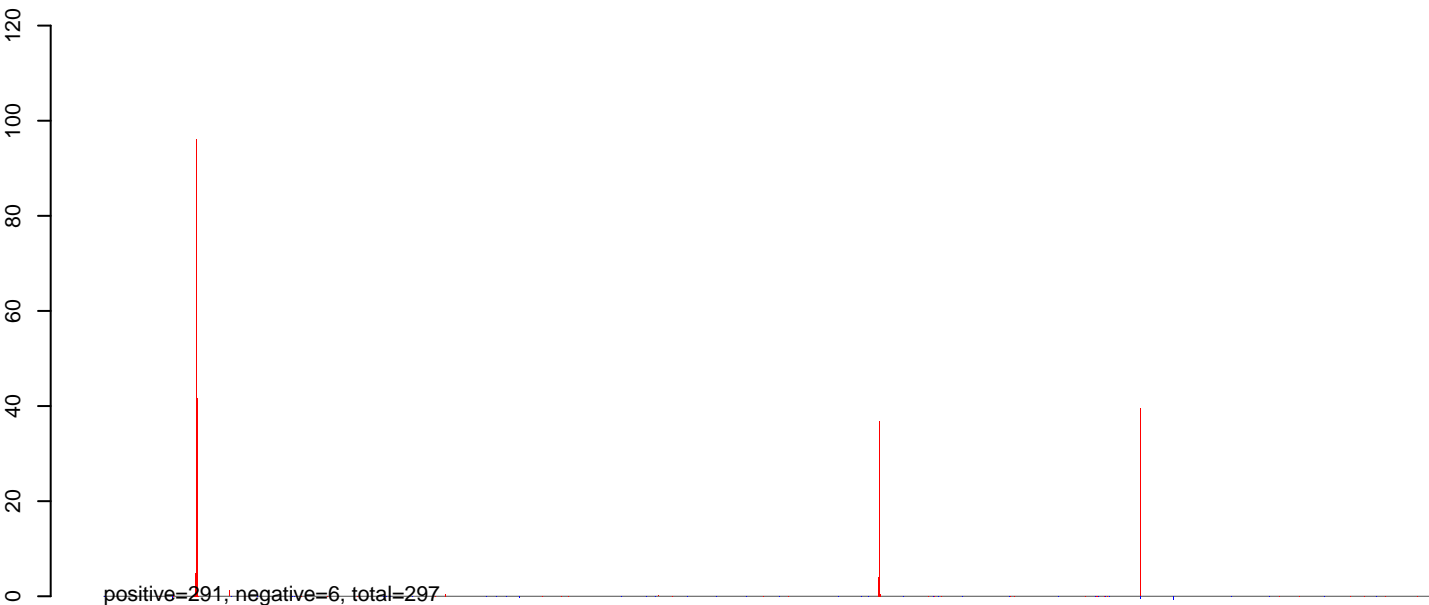


positive=90, negative=505, total=595

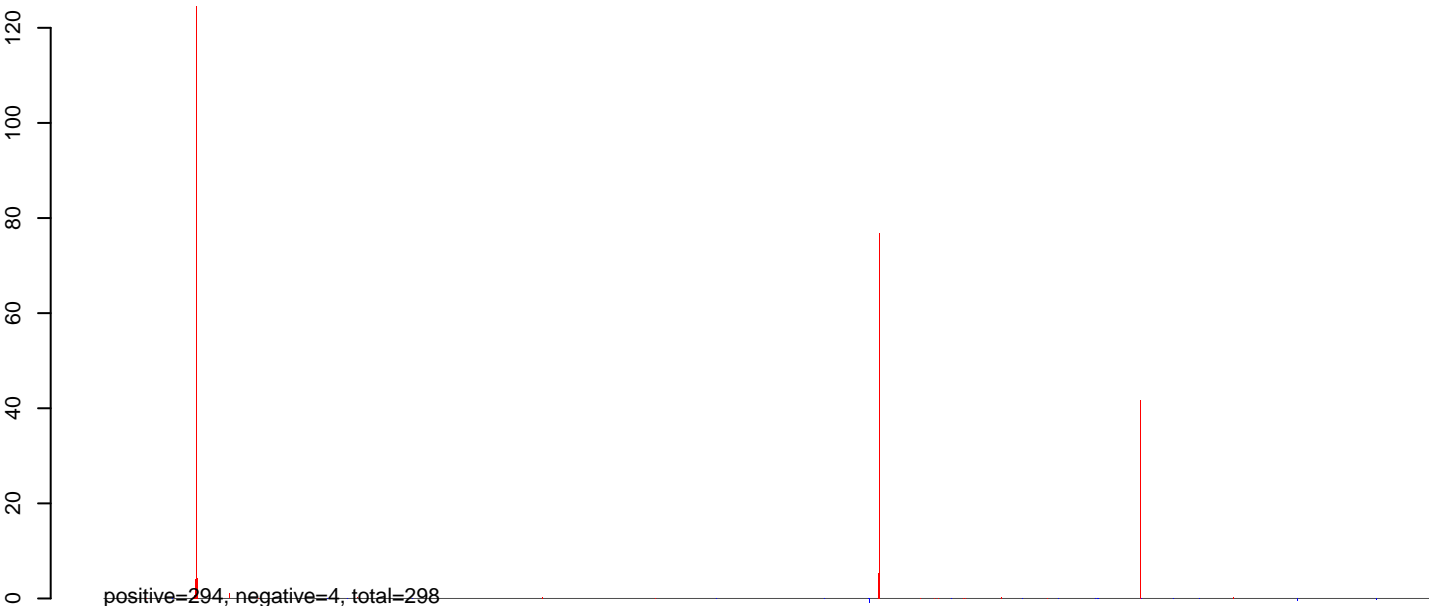
Window size=25, length=1216798, Wolbachia@Wolbachia_wAna_Hawaii:1-1216798

0 200000 400000 600000 800000 1000000 1200000

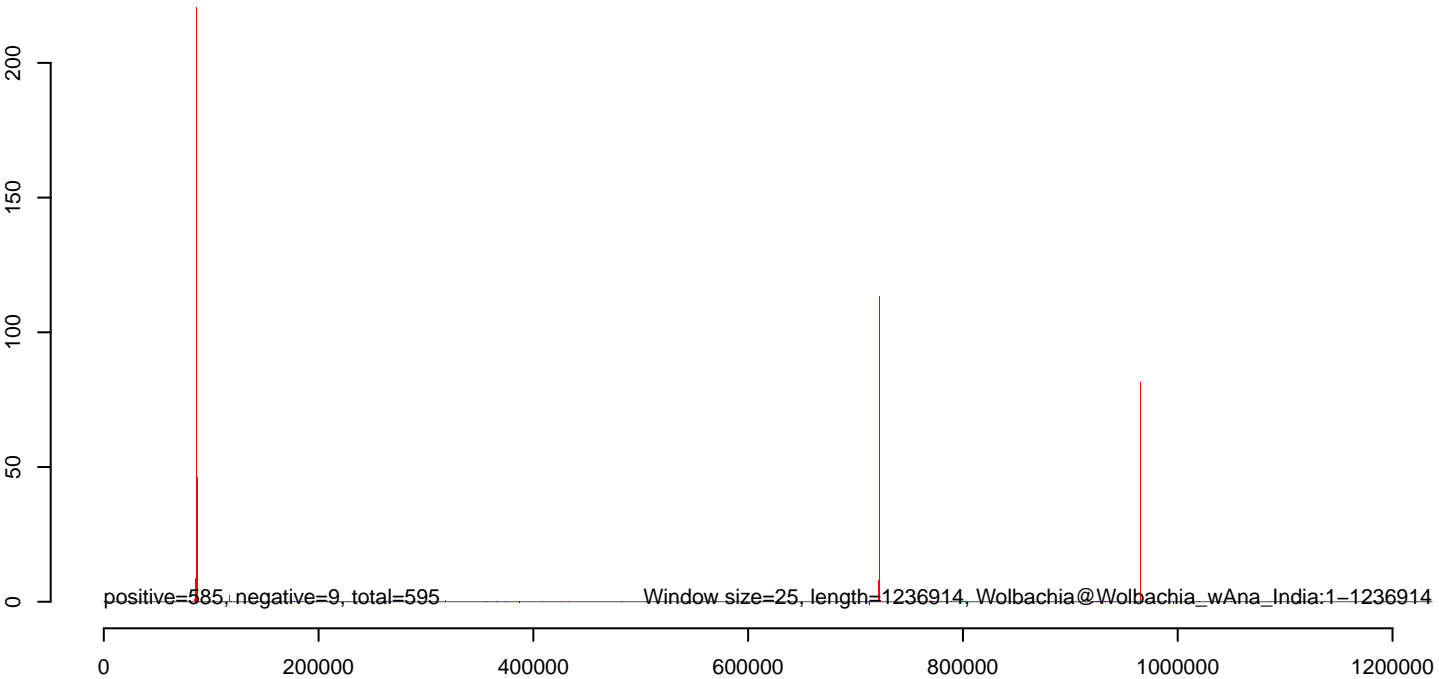
CuQuin_MG_7dpi3.18_23.rep



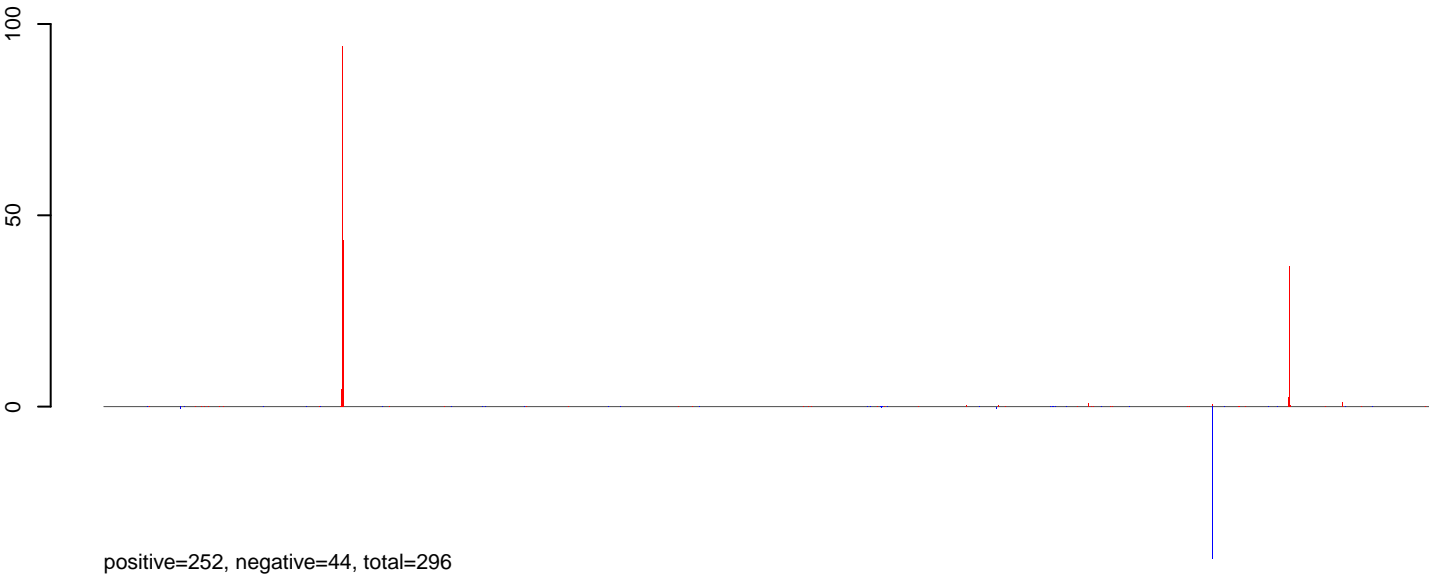
CuQuin_MG_7dpi3.24_35.rep



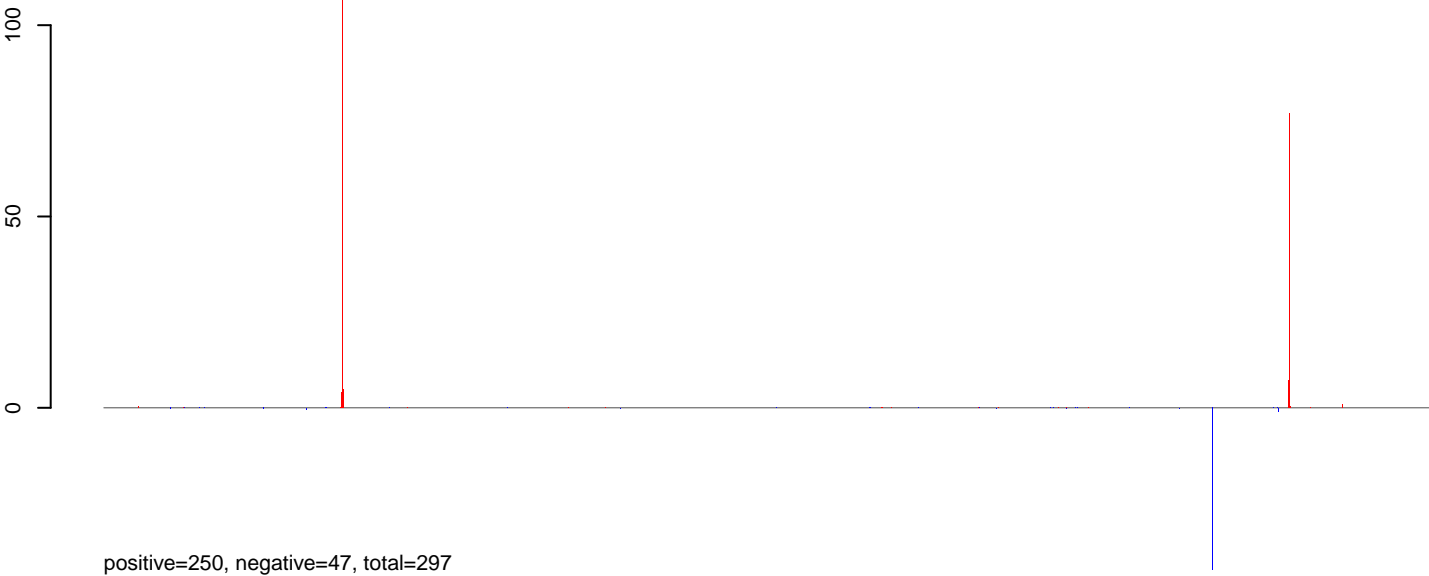
CuQuin_MG_7dpi3.rep



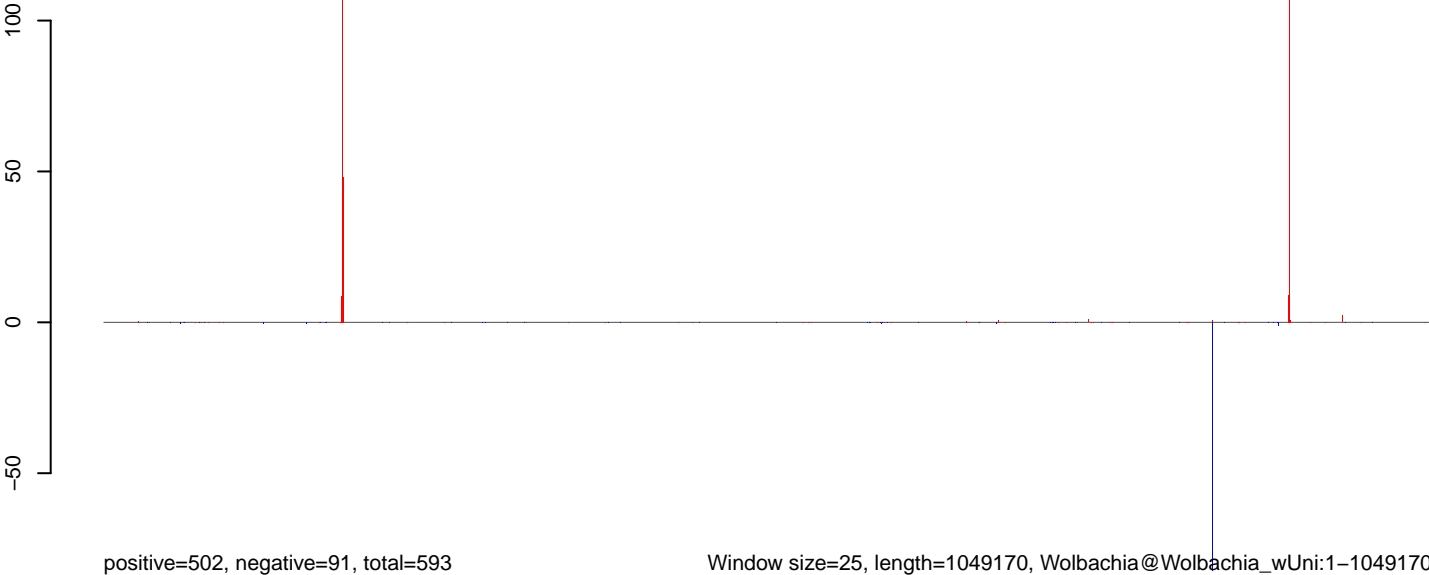
CuQuin_MG_7dpi3.18_23.rep



CuQuin_MG_7dpi3.24_35.rep



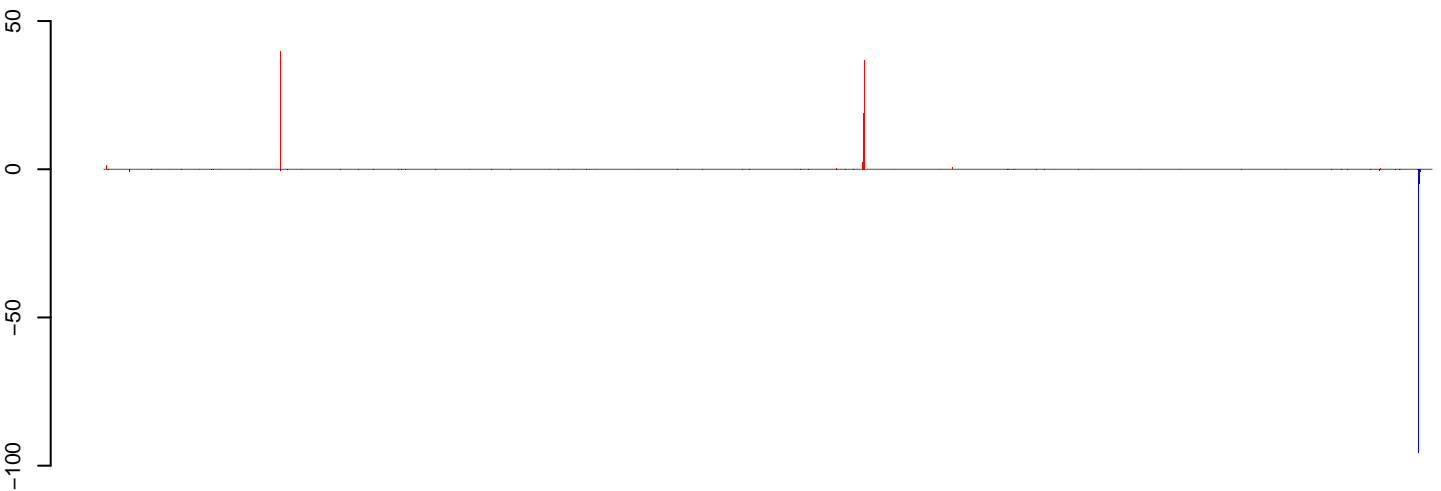
CuQuin_MG_7dpi3.rep



Window size=25, length=1049170, Wolbachia@Wolbachia_wUni:1-1049170

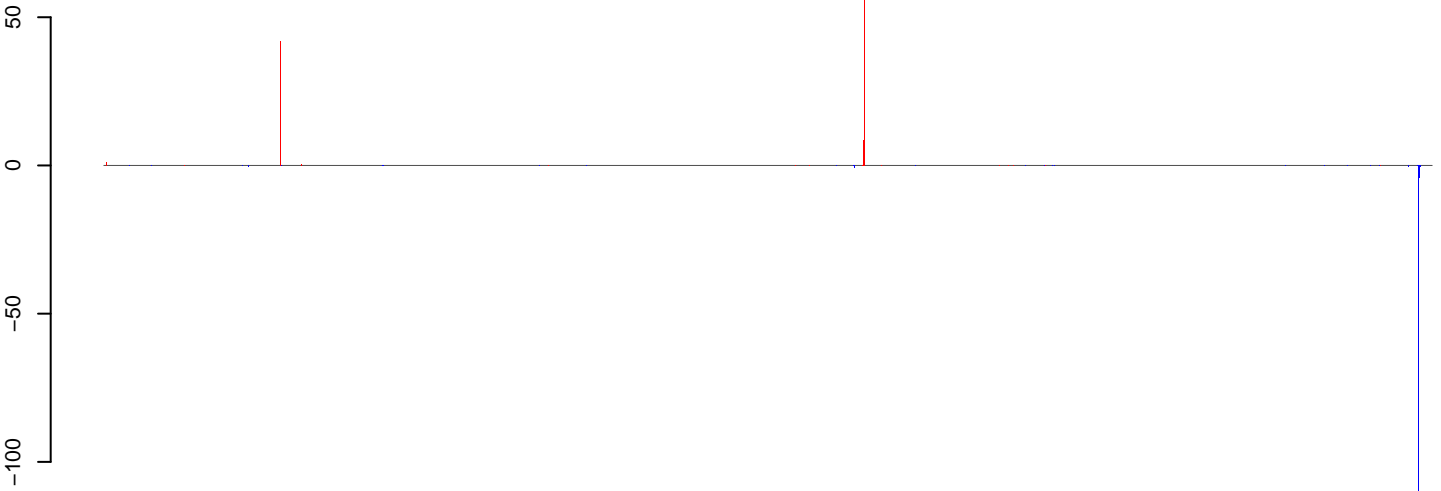
0e+00 2e+05 4e+05 6e+05 8e+05 1e+06

CuQuin_MG_7dpi3.18_23.rep



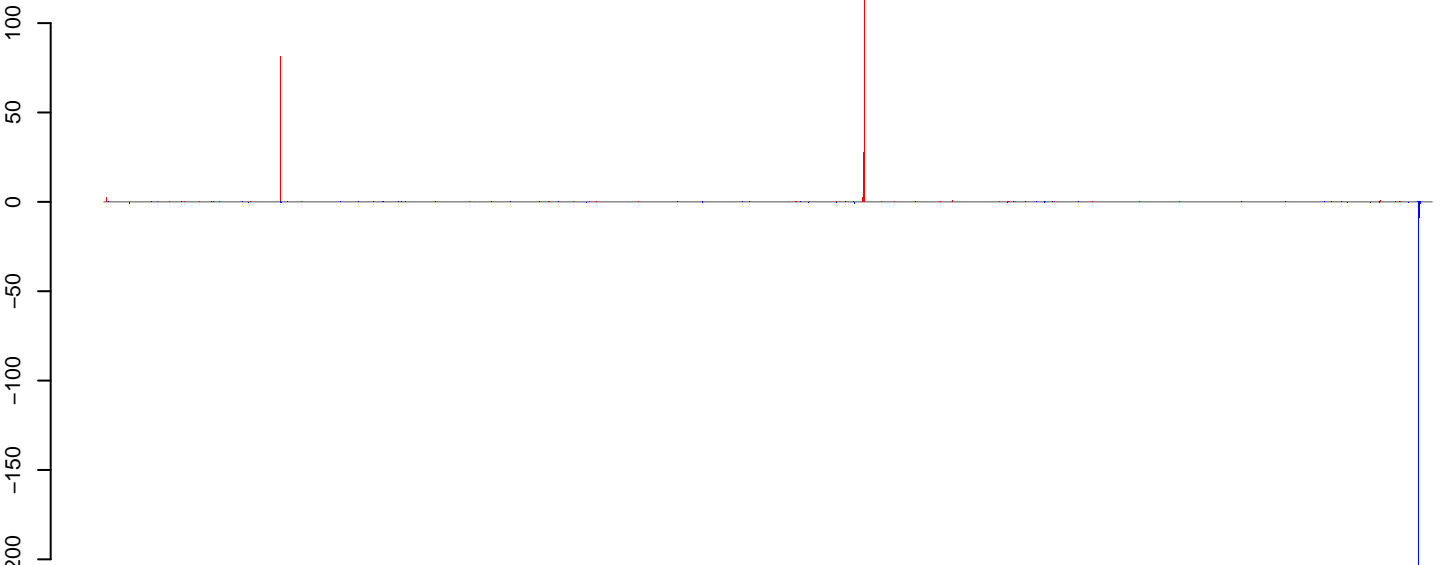
positive=120, negative=176, total=296

CuQuin_MG_7dpi3.24_35.rep



positive=154, negative=144, total=298

CuQuin_MG_7dpi3.rep

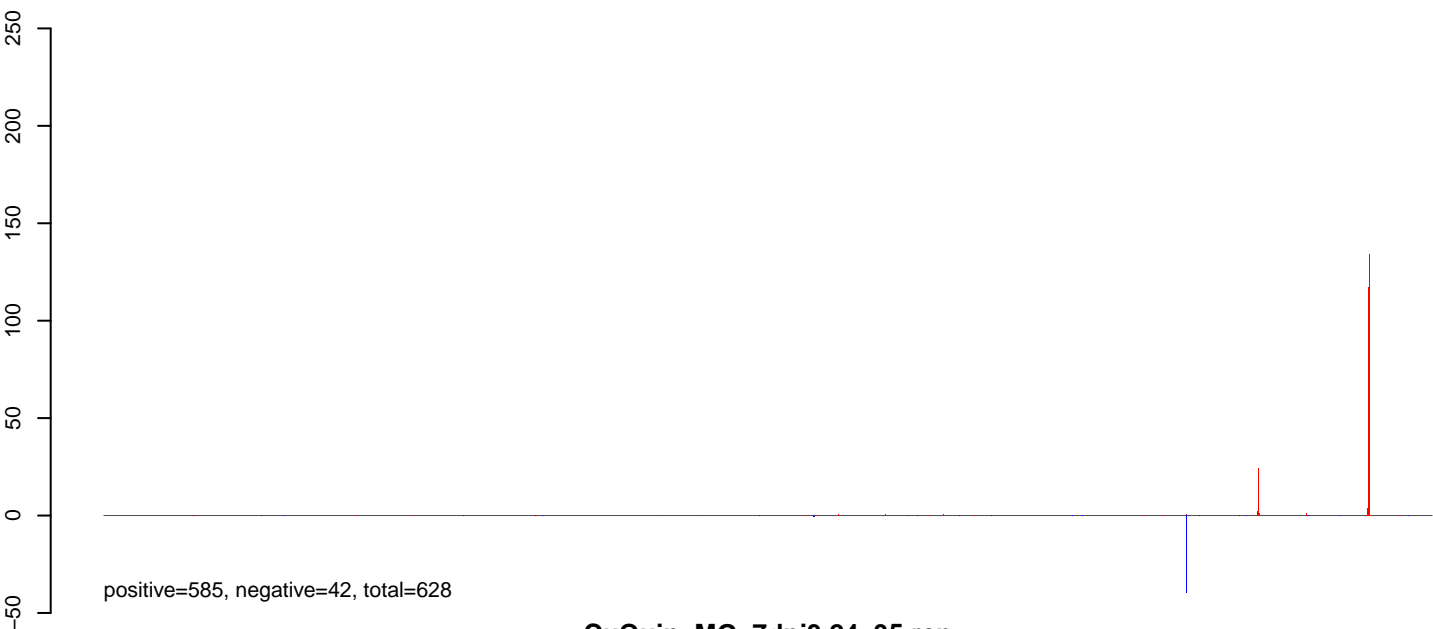


positive=273, negative=320, total=594

Window size=25, length=1223568, Wolbachia@Wolbachia_wAna_Indonesia:1-1223568

0 200000 400000 600000 800000 1000000 1200000

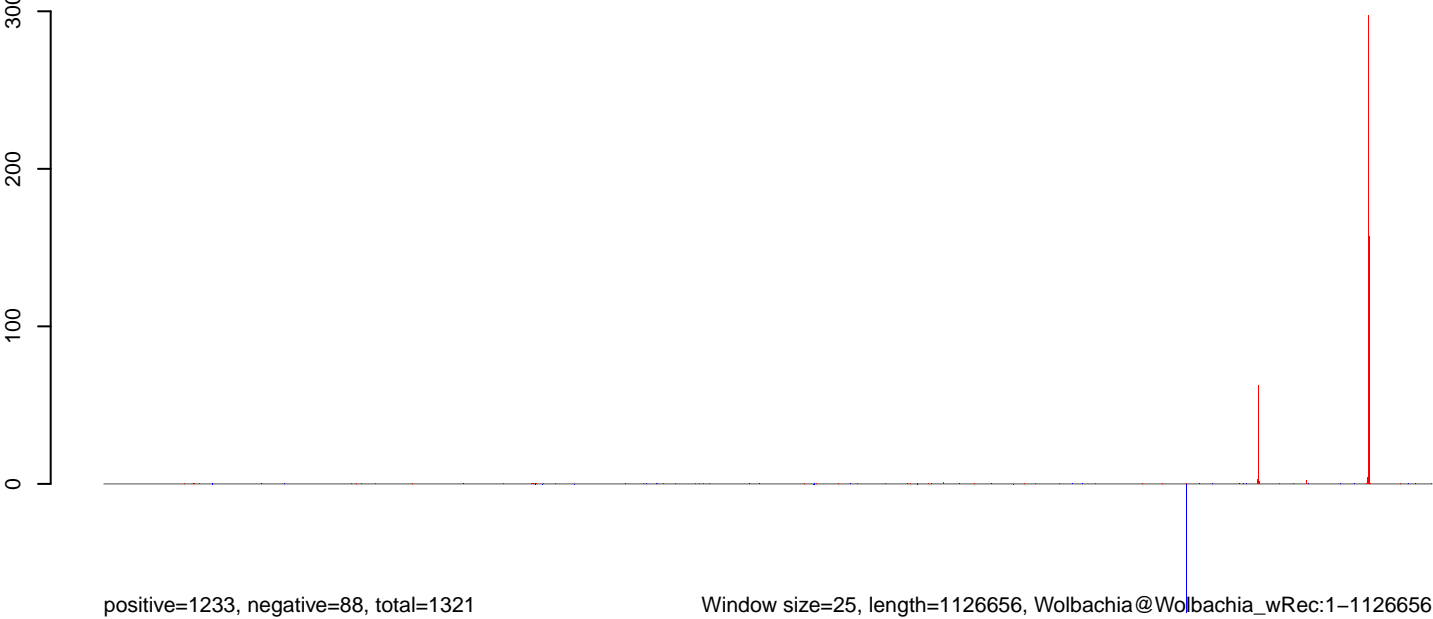
CuQuin_MG_7dpi3.18_23.rep



CuQuin_MG_7dpi3.24_35.rep



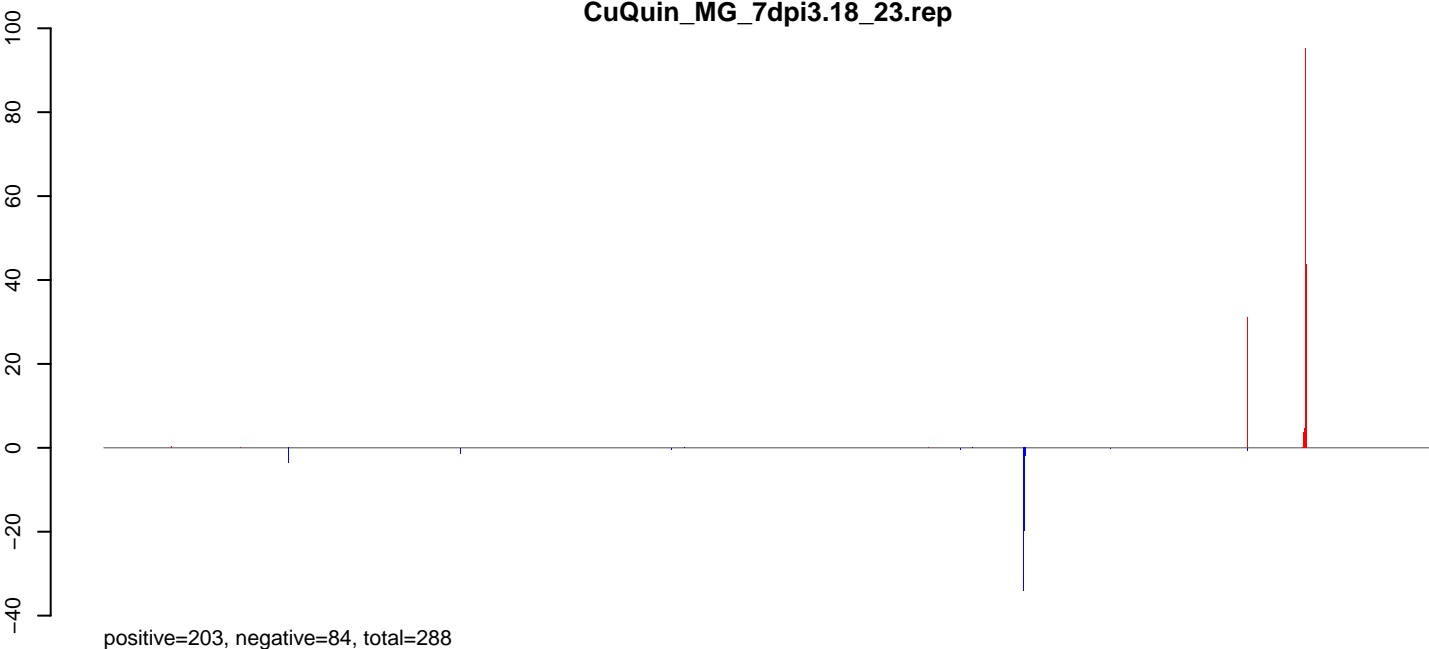
CuQuin_MG_7dpi3.rep



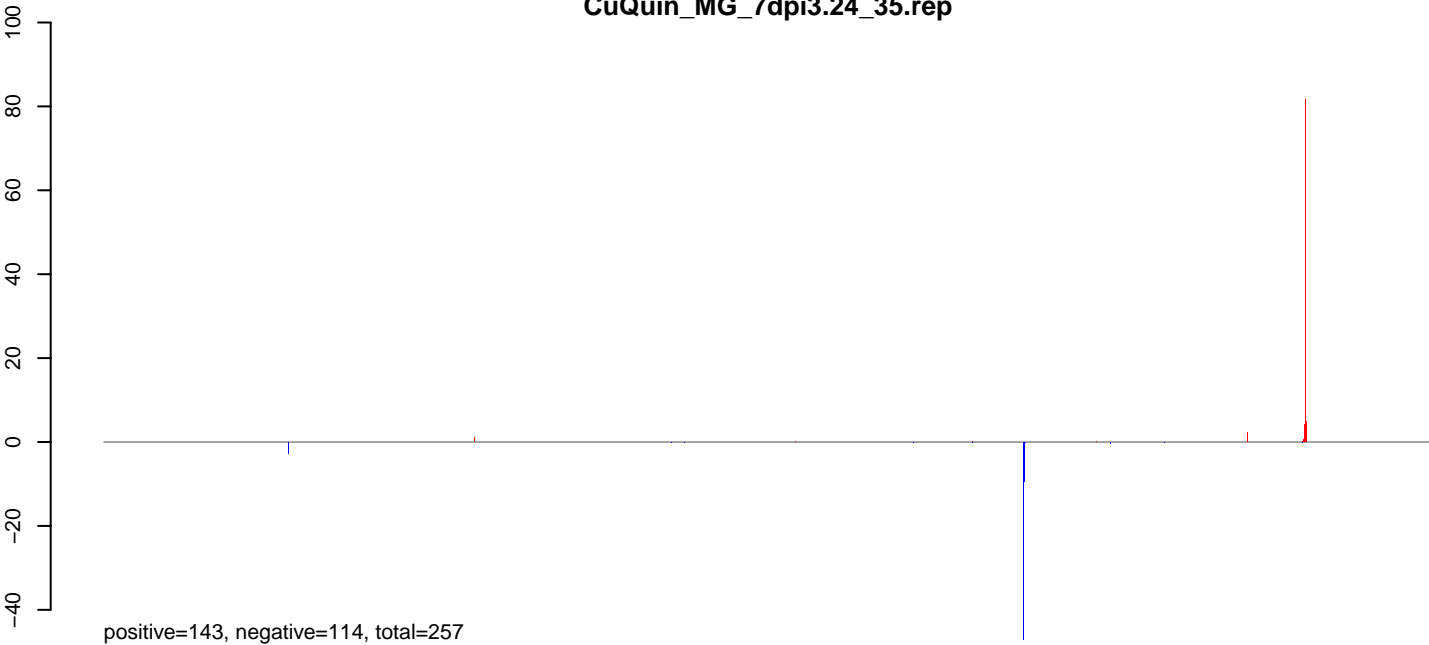
Window size=25, length=1126656, Wolbachia@Wolbachia_wRec:1-1126656

0e+00 2e+05 4e+05 6e+05 8e+05 1e+06

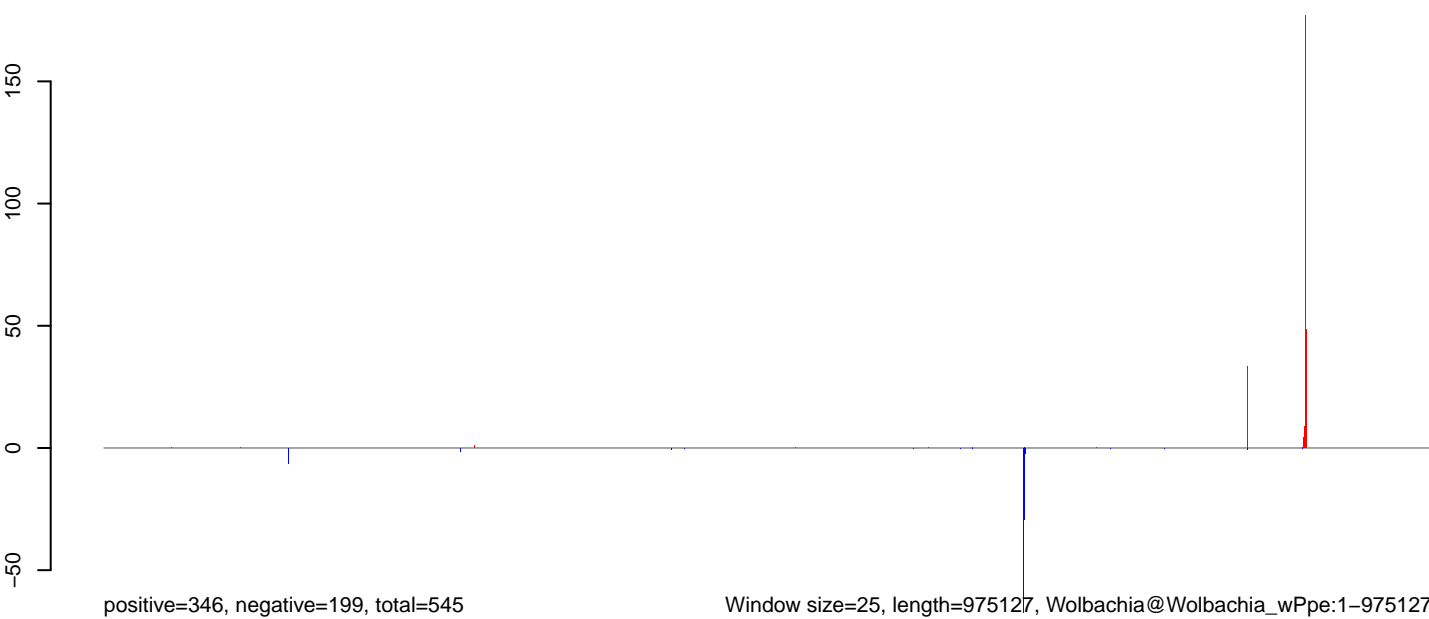
CuQuin_MG_7dpi3.18_23.rep



CuQuin_MG_7dpi3.24_35.rep



CuQuin_MG_7dpi3.rep



Window size=25, length=975127, Wolbachia@Wolbachia_wPpe:1-975127

0e+00 2e+05 4e+05 6e+05 8e+05 1e+06