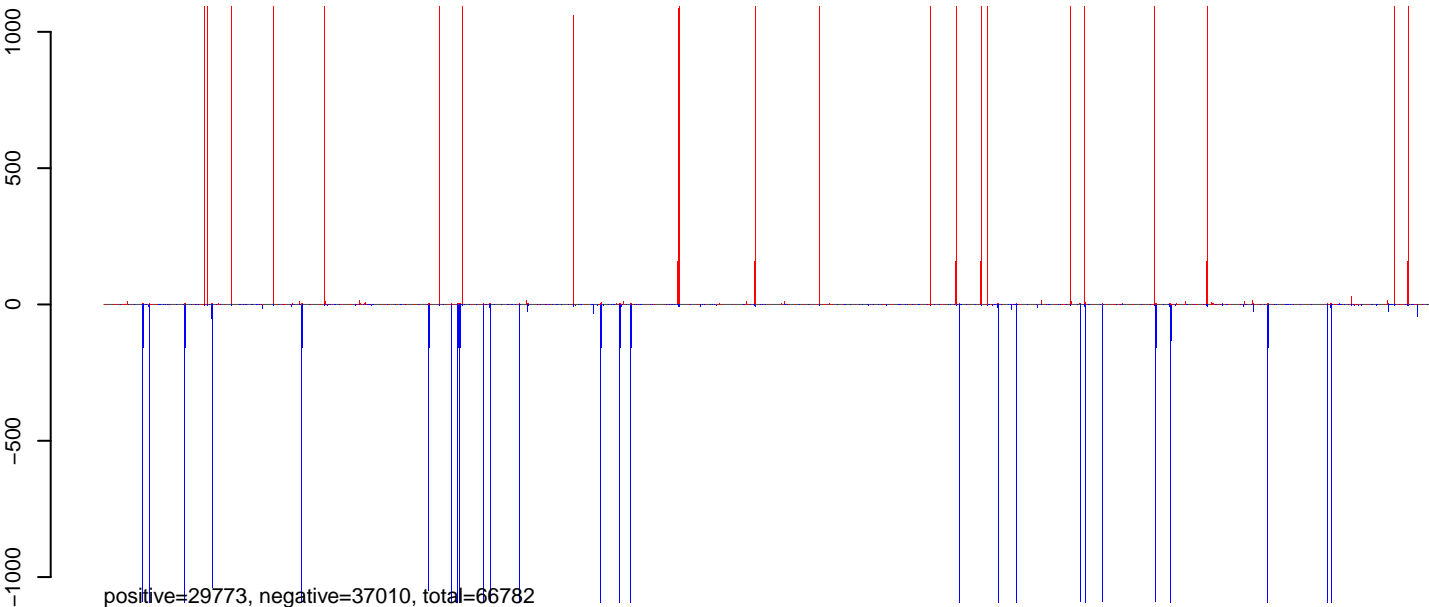
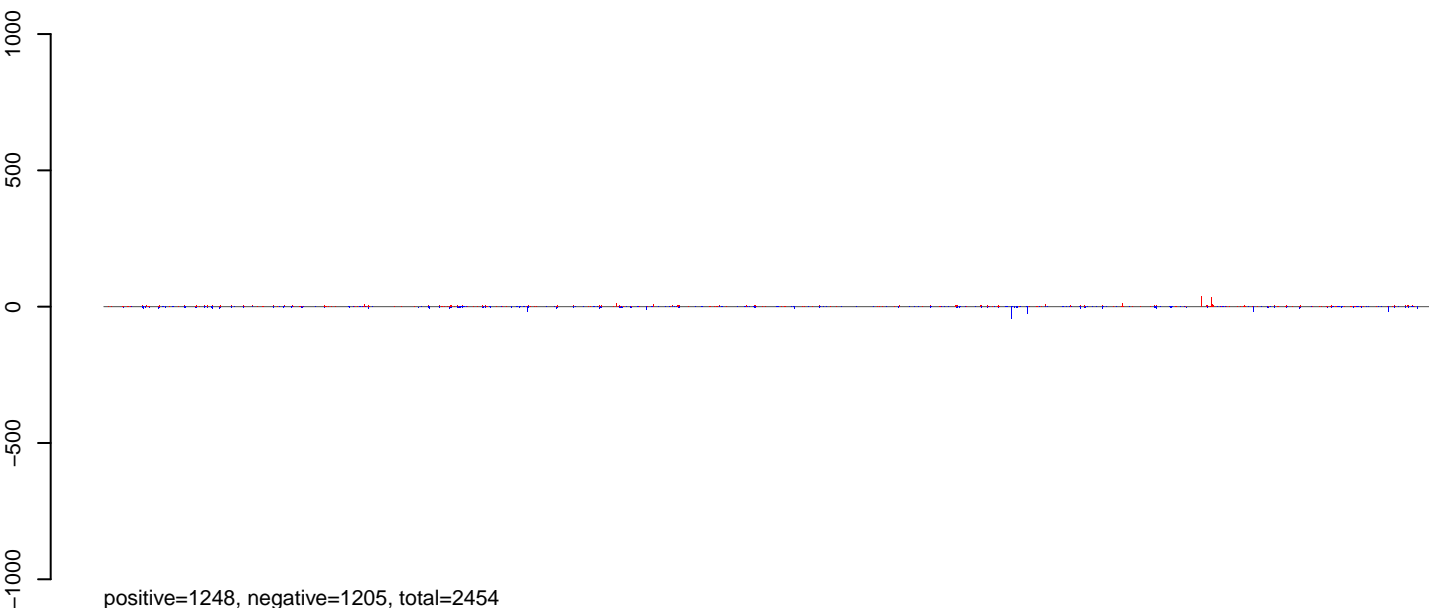


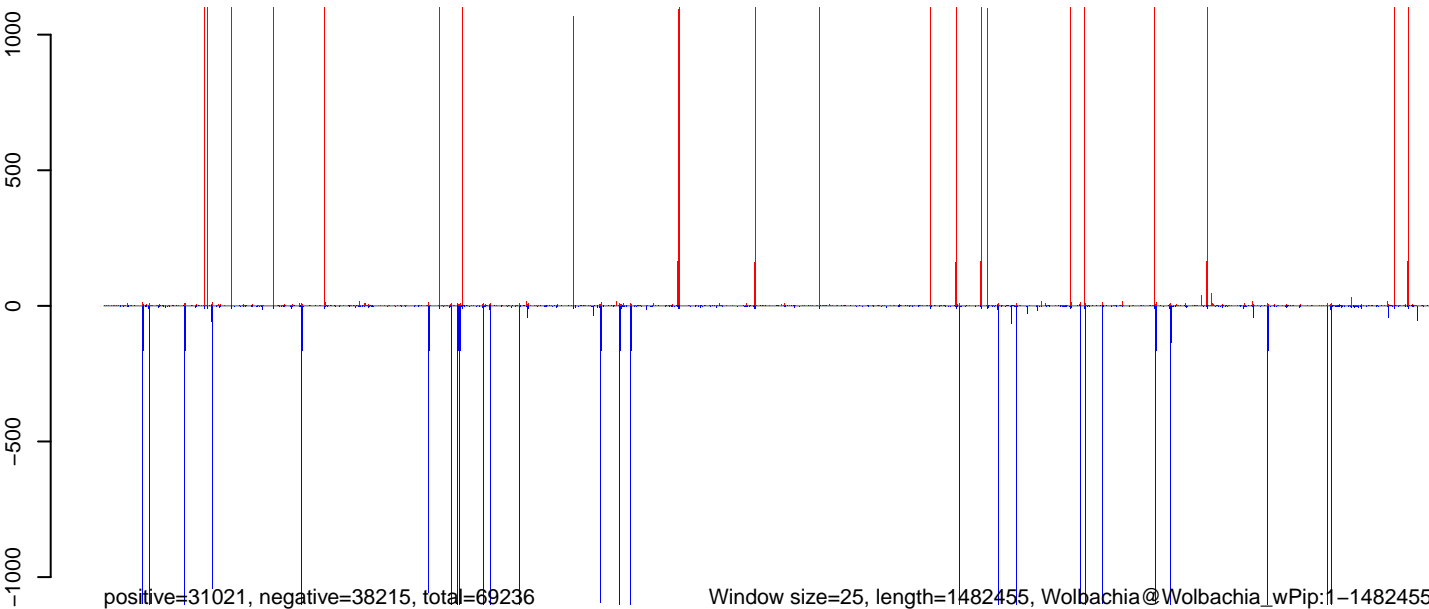
CuQuin_SG_14dpi3.18_23.rep



CuQuin_SG_14dpi3.24_35.rep

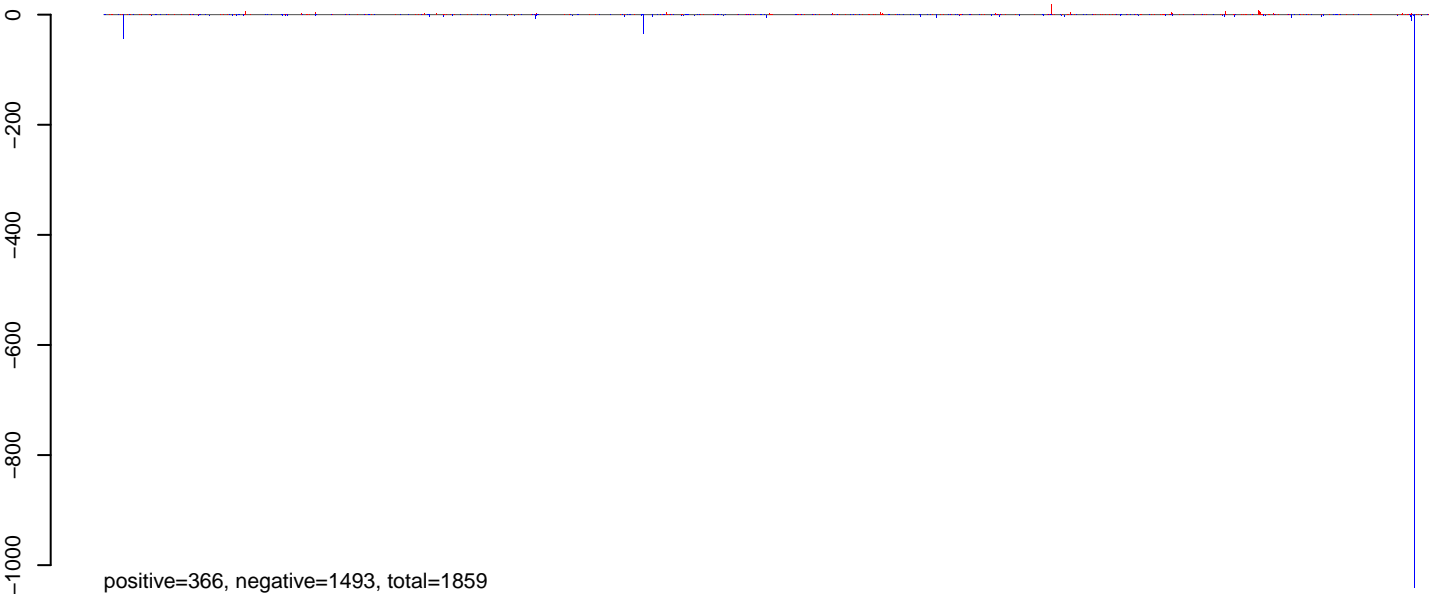


CuQuin_SG_14dpi3.rep

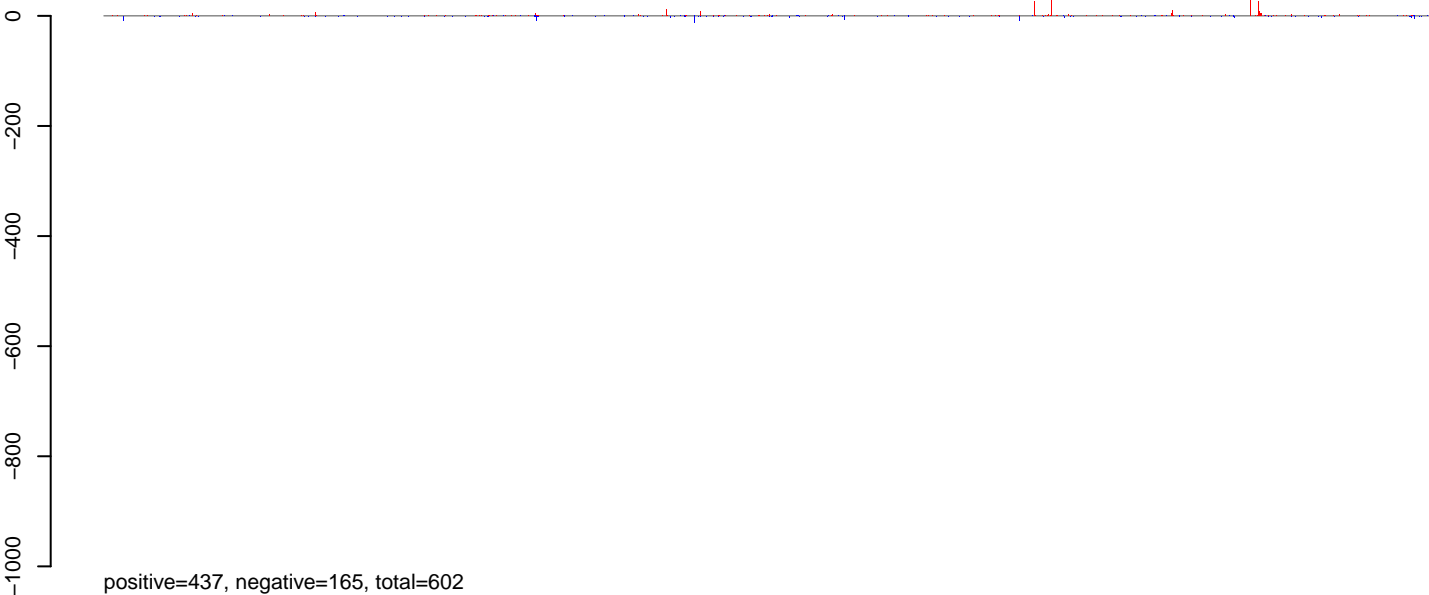


0 500000 1000000 1500000

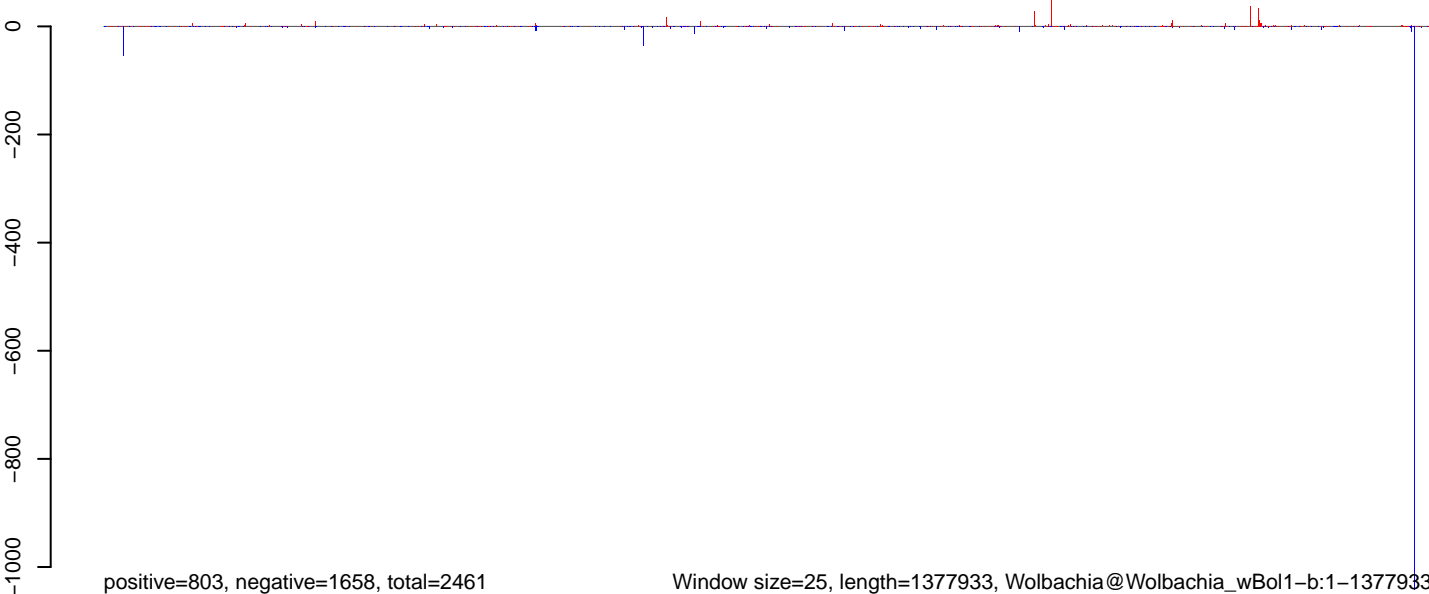
CuQuin_SG_14dpi3.18_23.rep



CuQuin_SG_14dpi3.24_35.rep

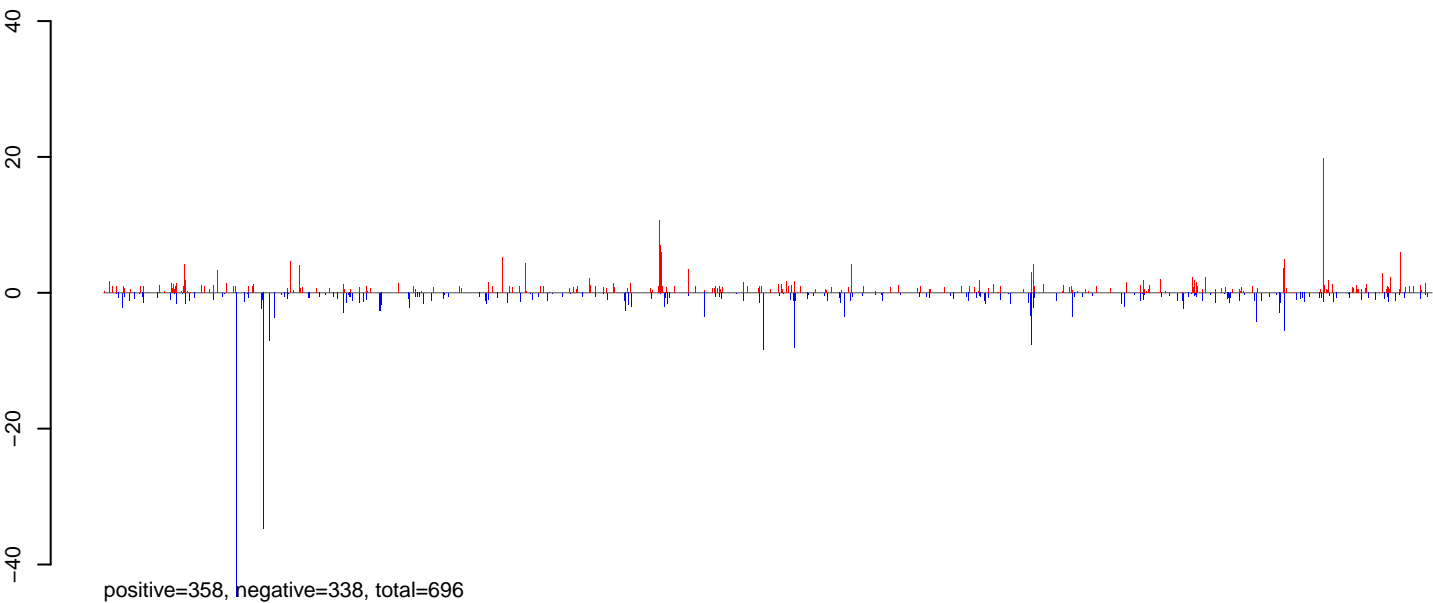


CuQuin_SG_14dpi3.rep

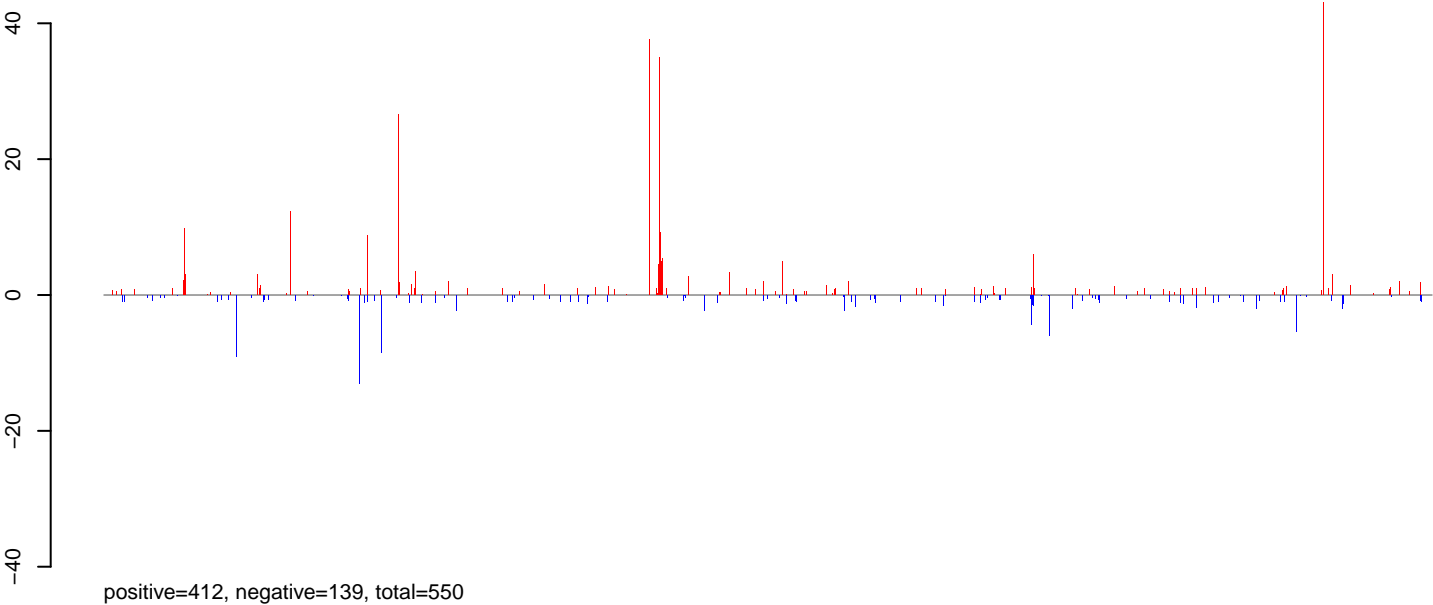


0 200000 400000 600000 800000 1000000 1200000 1400000

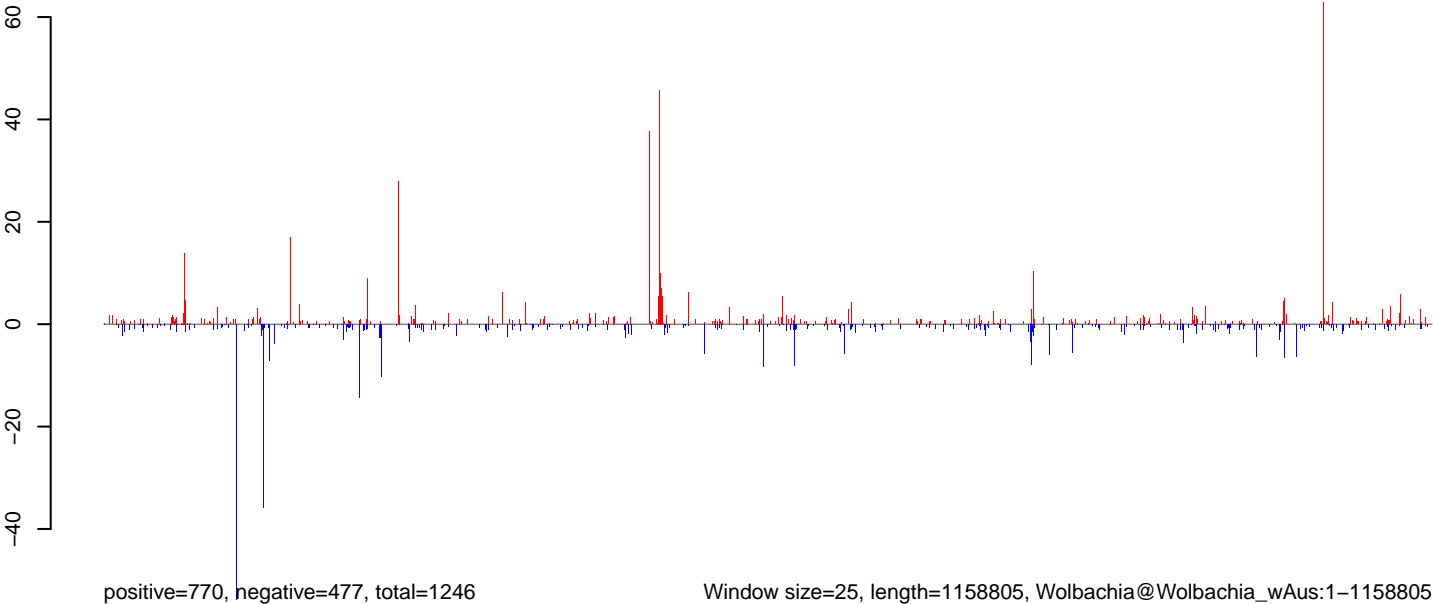
CuQuin_SG_14dpi3.18_23.rep



CuQuin_SG_14dpi3.24_35.rep



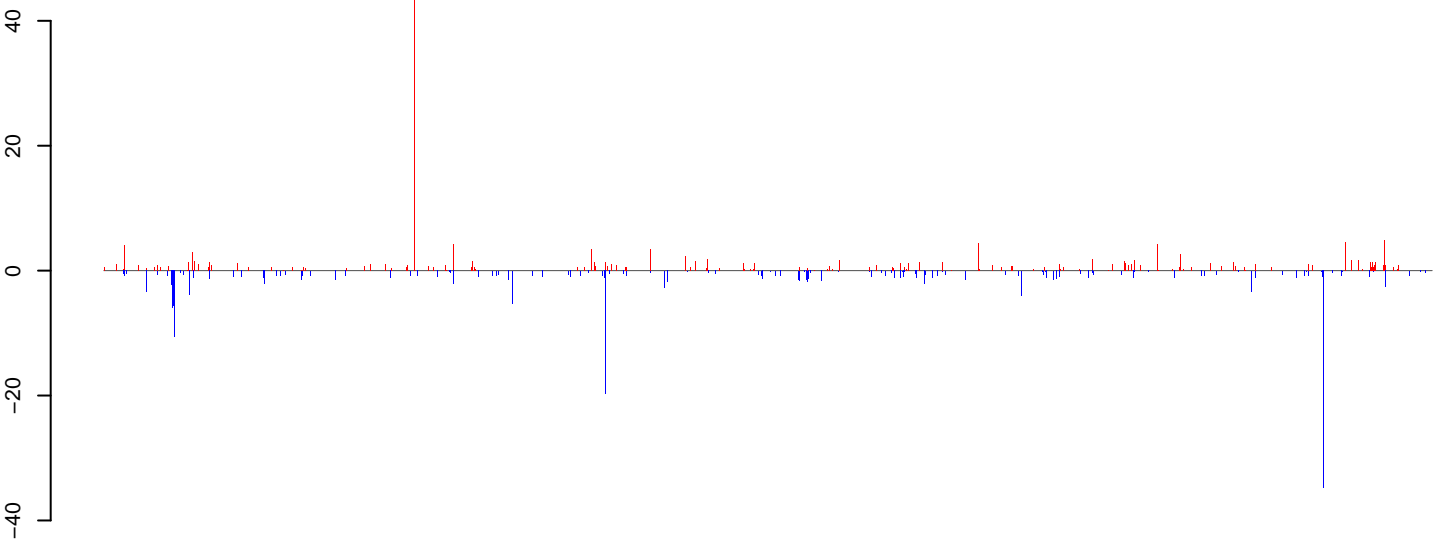
CuQuin_SG_14dpi3.rep



Window size=25, length=1158805, Wolbachia@Wolbachia_wAus:1-1158805

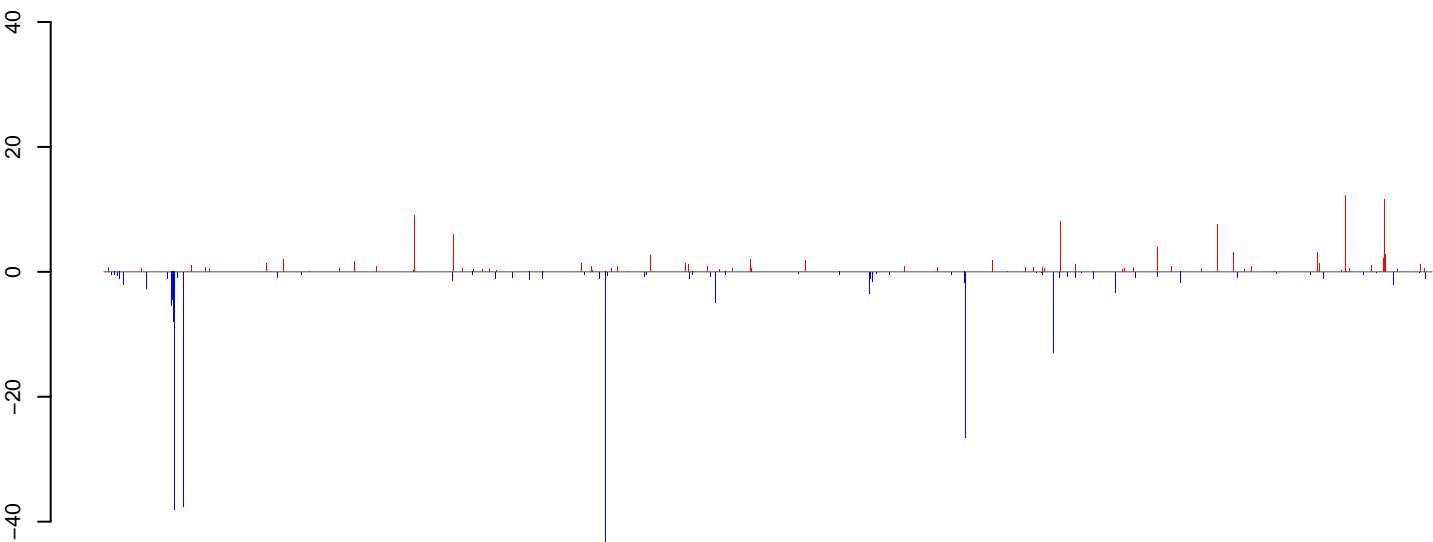
0 200000 400000 600000 800000 1000000 1200000

CuQuin_SG_14dpi3.18_23.rep



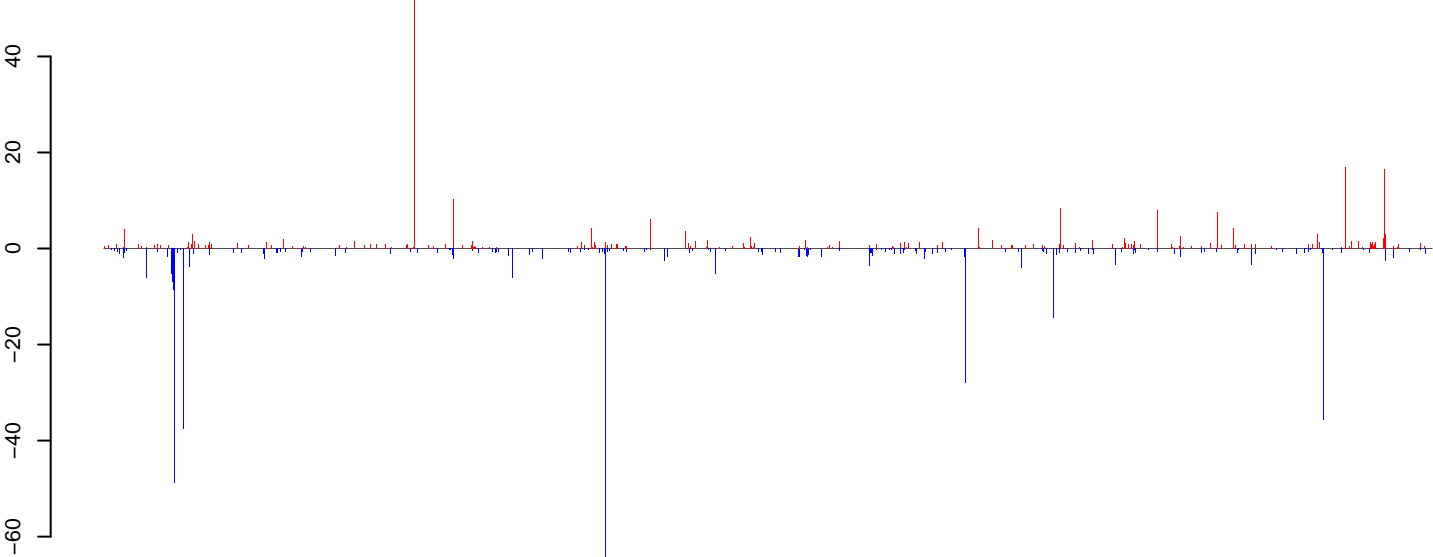
positive=210, negative=259, total=469

CuQuin_SG_14dpi3.24_35.rep



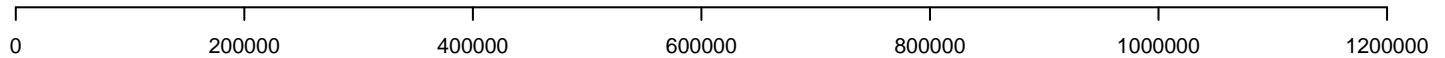
positive=146, negative=308, total=454

CuQuin_SG_14dpi3.rep

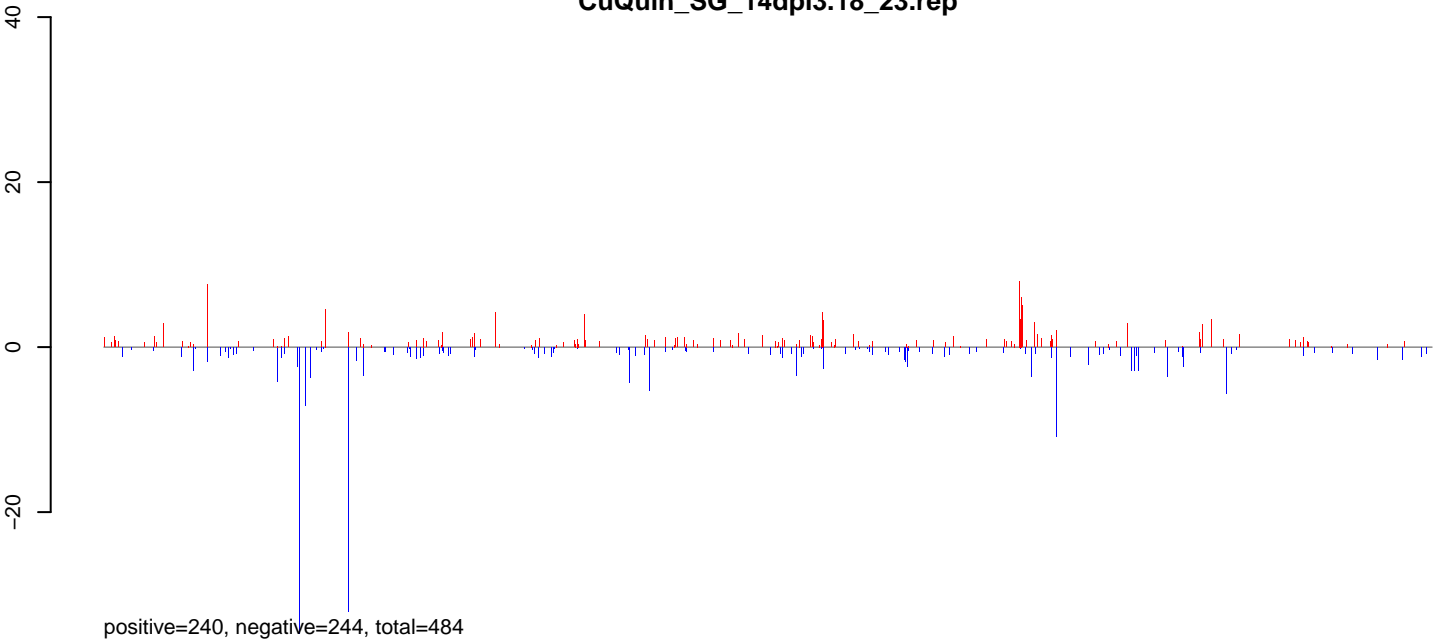


positive=356, negative=567, total=923

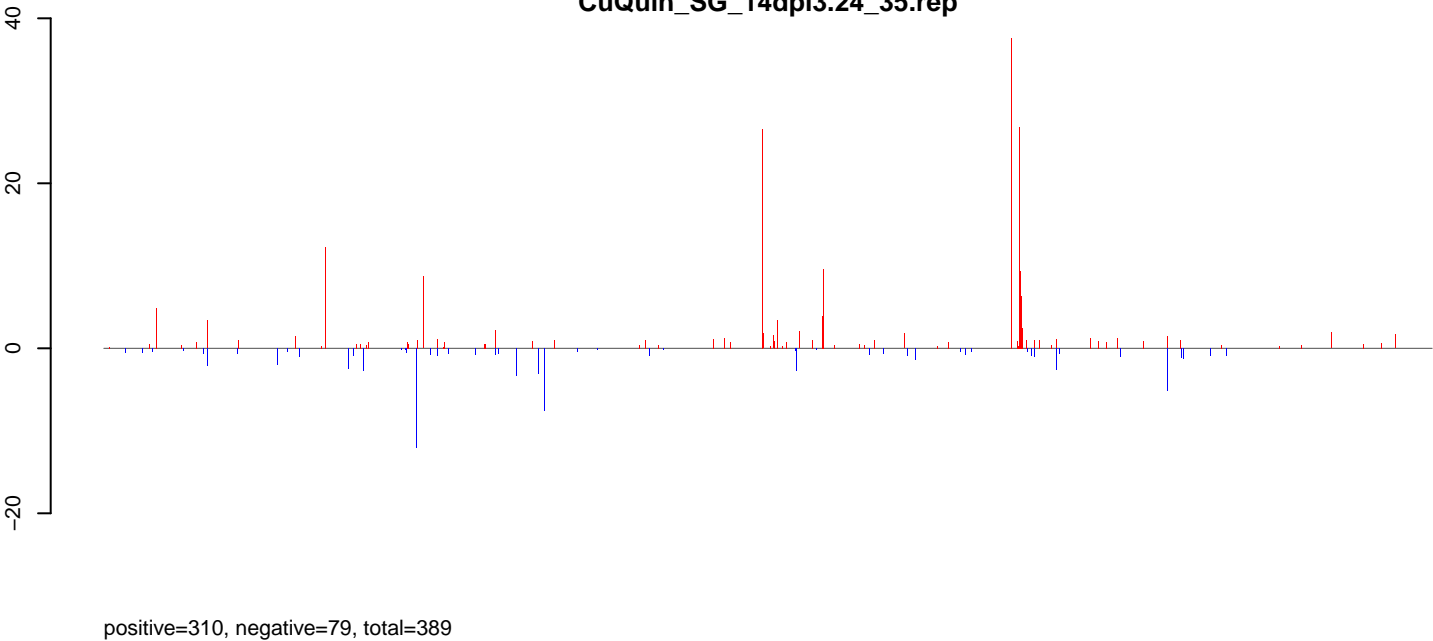
Window size=25, length=1162431, Wolbachia@Wolbachia_wAlbB:1-1162431



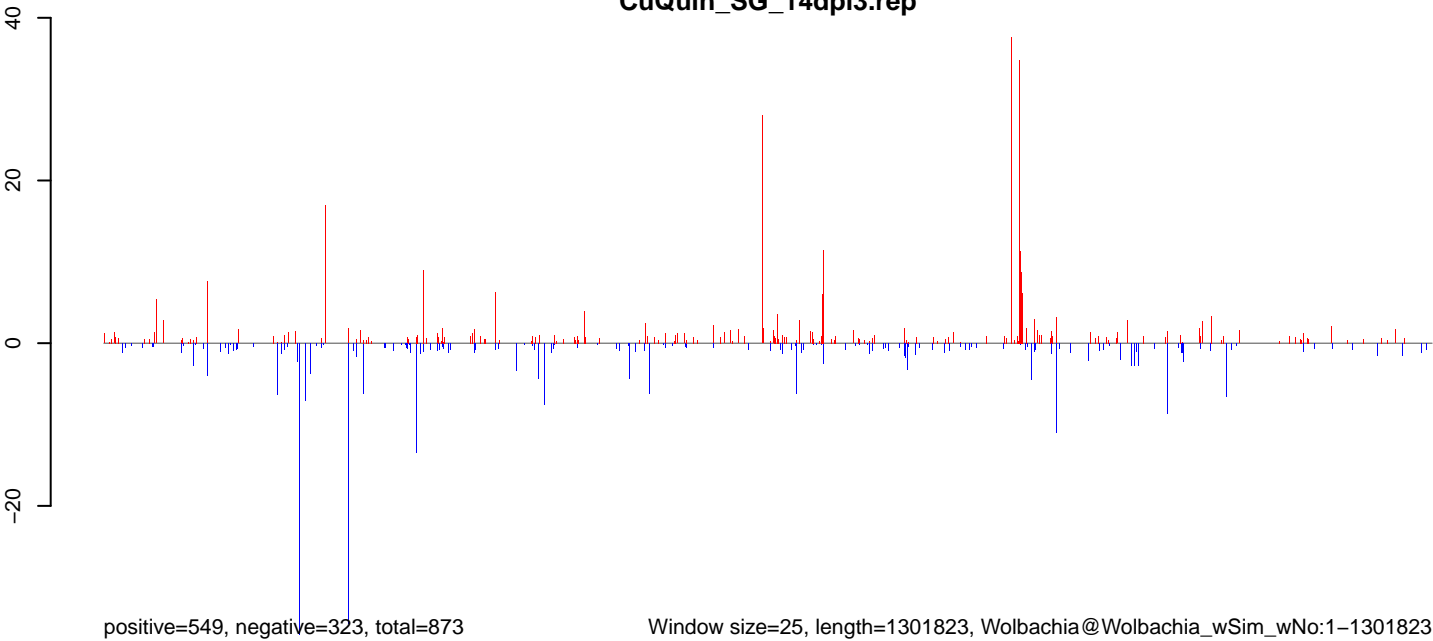
CuQuin_SG_14dpi3.18_23.rep



CuQuin_SG_14dpi3.24_35.rep



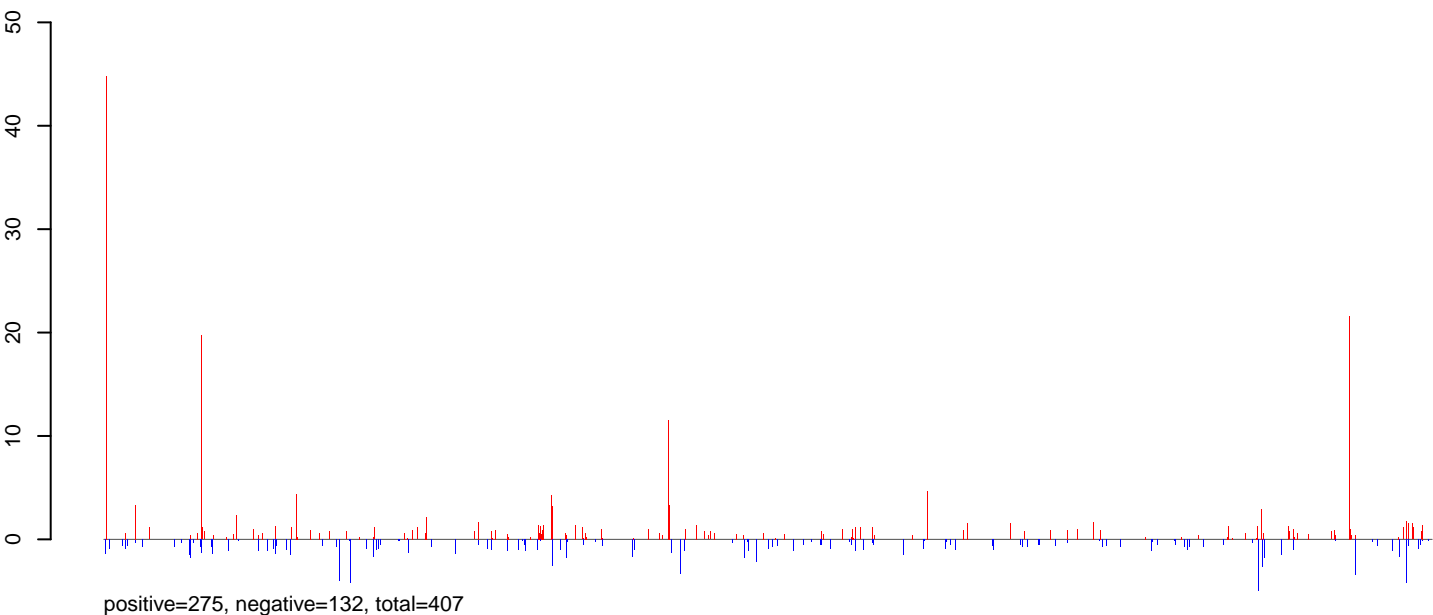
CuQuin_SG_14dpi3.rep



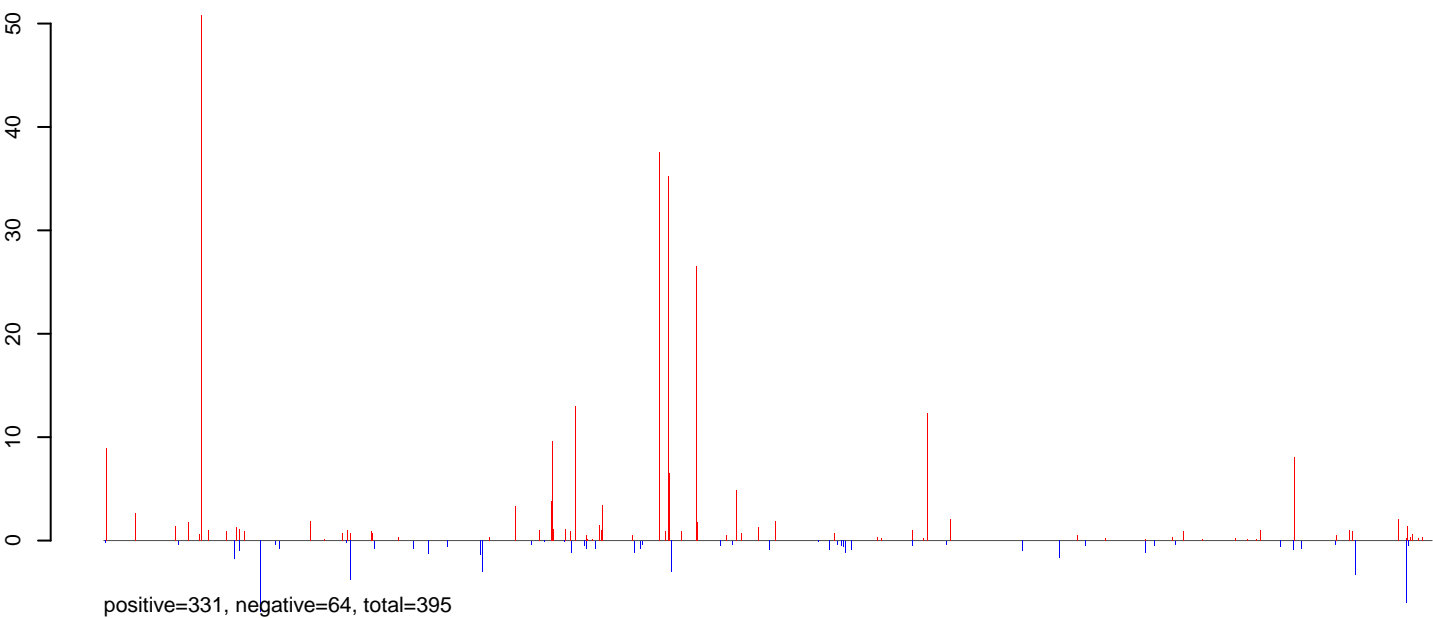
Window size=25, length=1301823, Wolbachia@Wolbachia_wSim_wNo:1-1301823

0 200000 400000 600000 800000 1000000 1200000

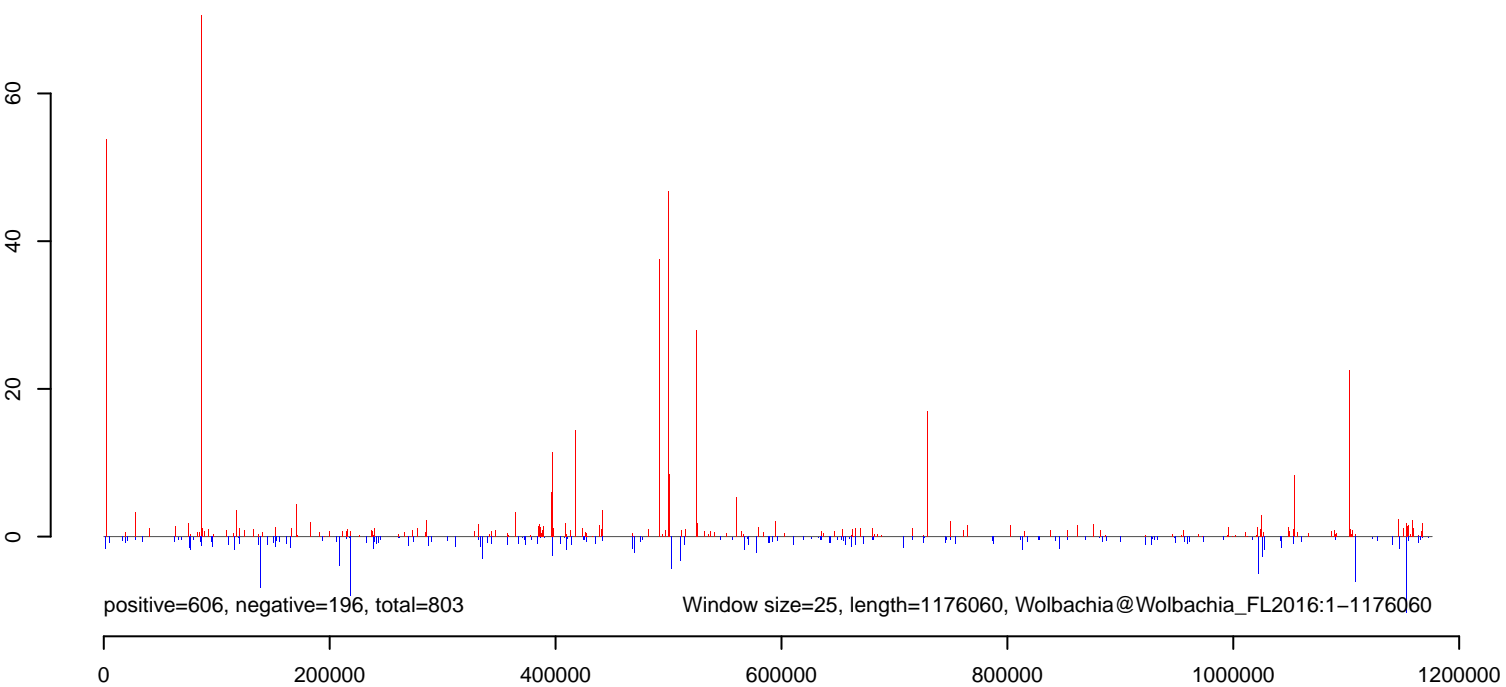
CuQuin_SG_14dpi3.18_23.rep



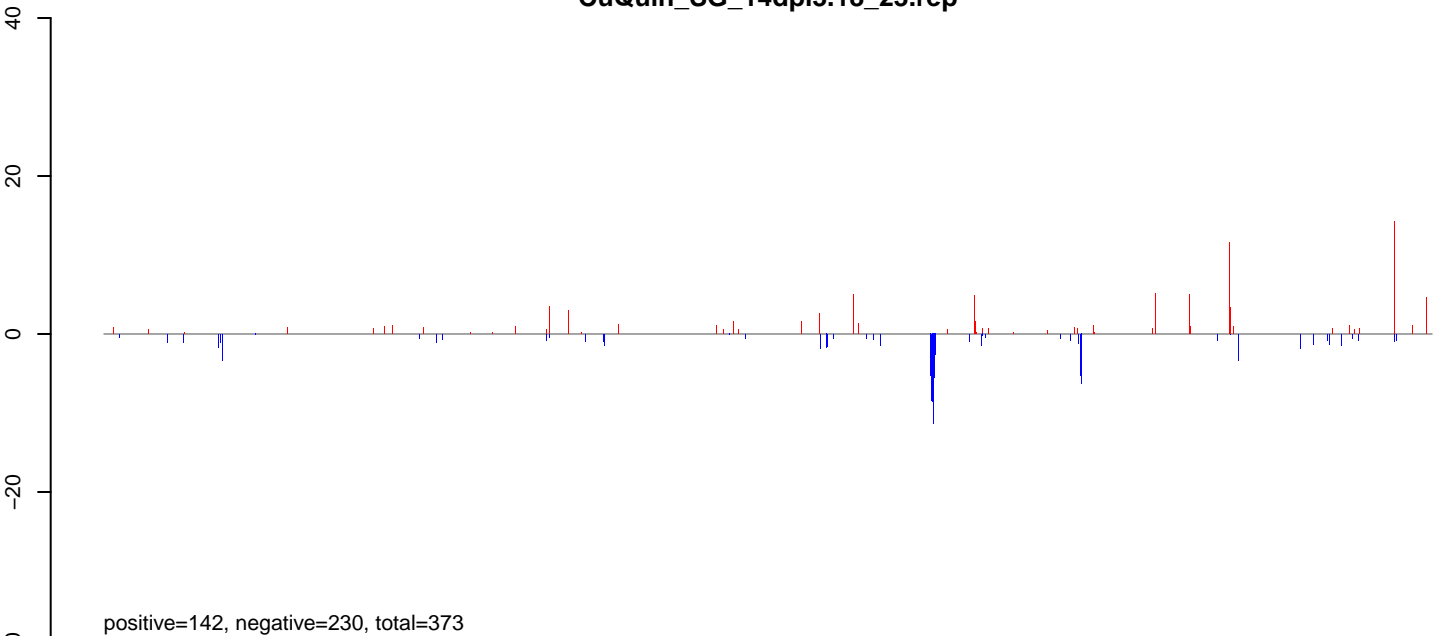
CuQuin_SG_14dpi3.24_35.rep



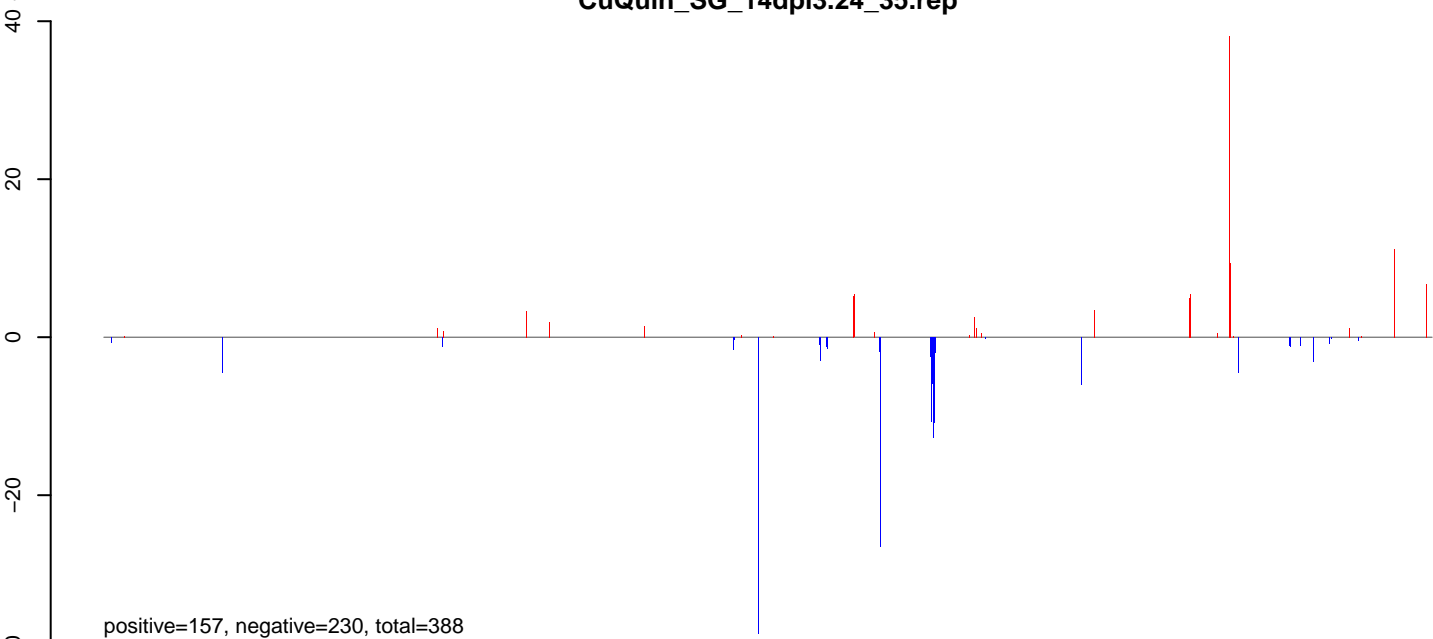
CuQuin_SG_14dpi3.rep



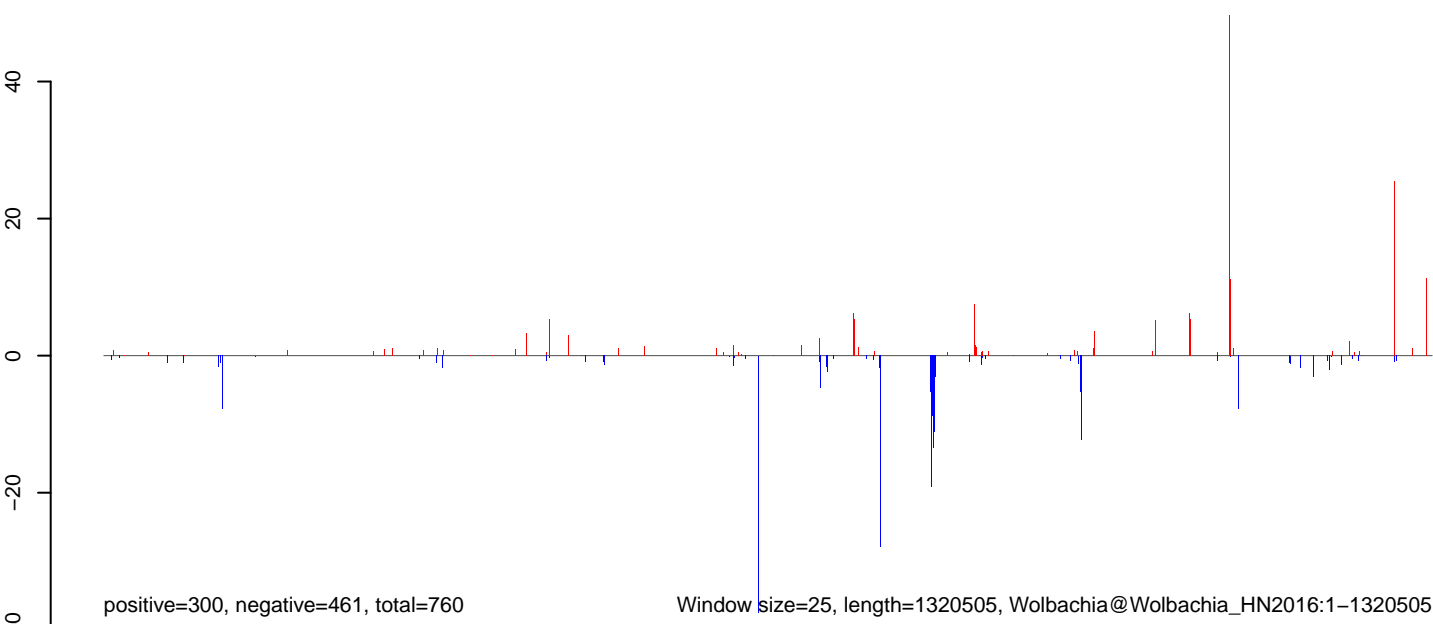
CuQuin_SG_14dpi3.18_23.rep



CuQuin_SG_14dpi3.24_35.rep



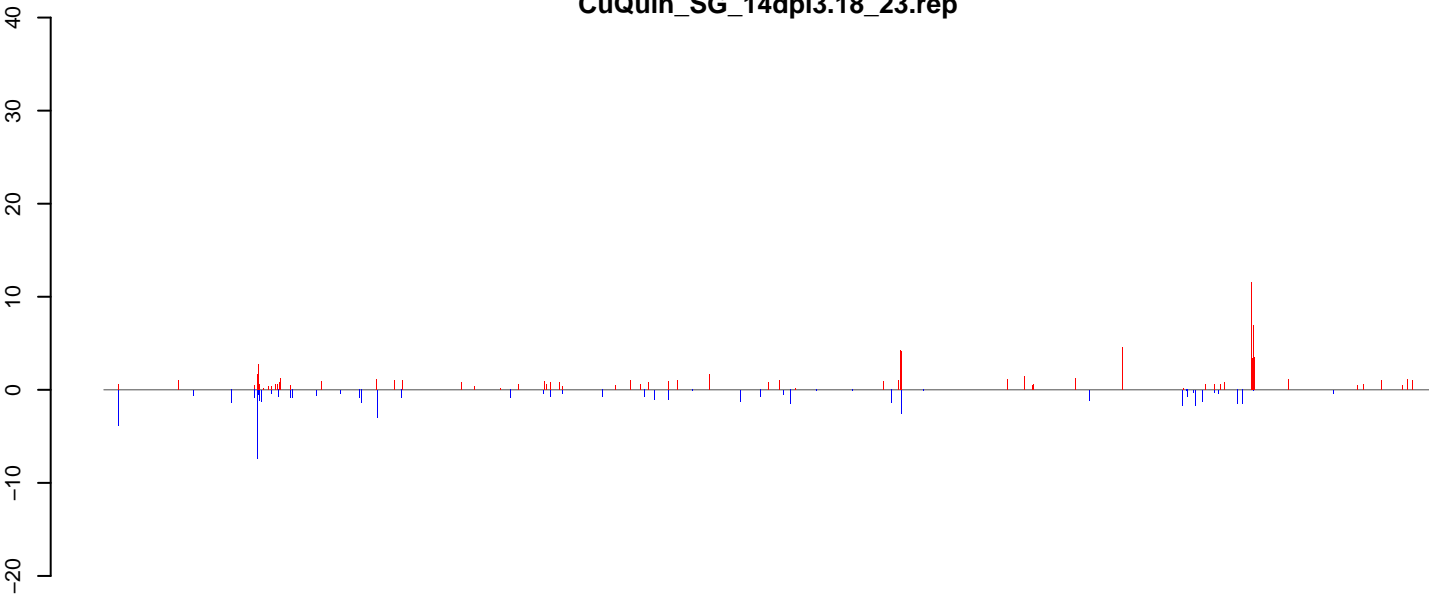
CuQuin_SG_14dpi3.rep



Window size=25, length=1320505, Wolbachia@Wolbachia_HN2016:1-1320505

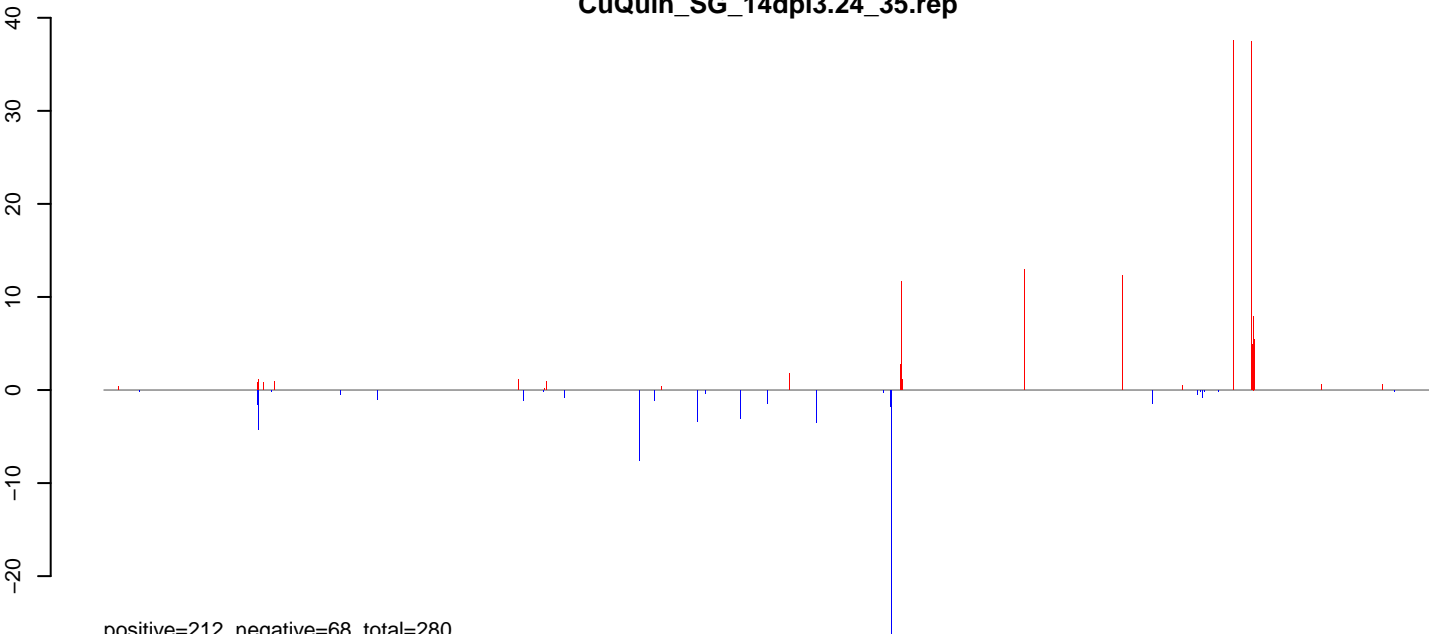
0 200000 400000 600000 800000 1000000 1200000

CuQuin_SG_14dpi3.18_23.rep



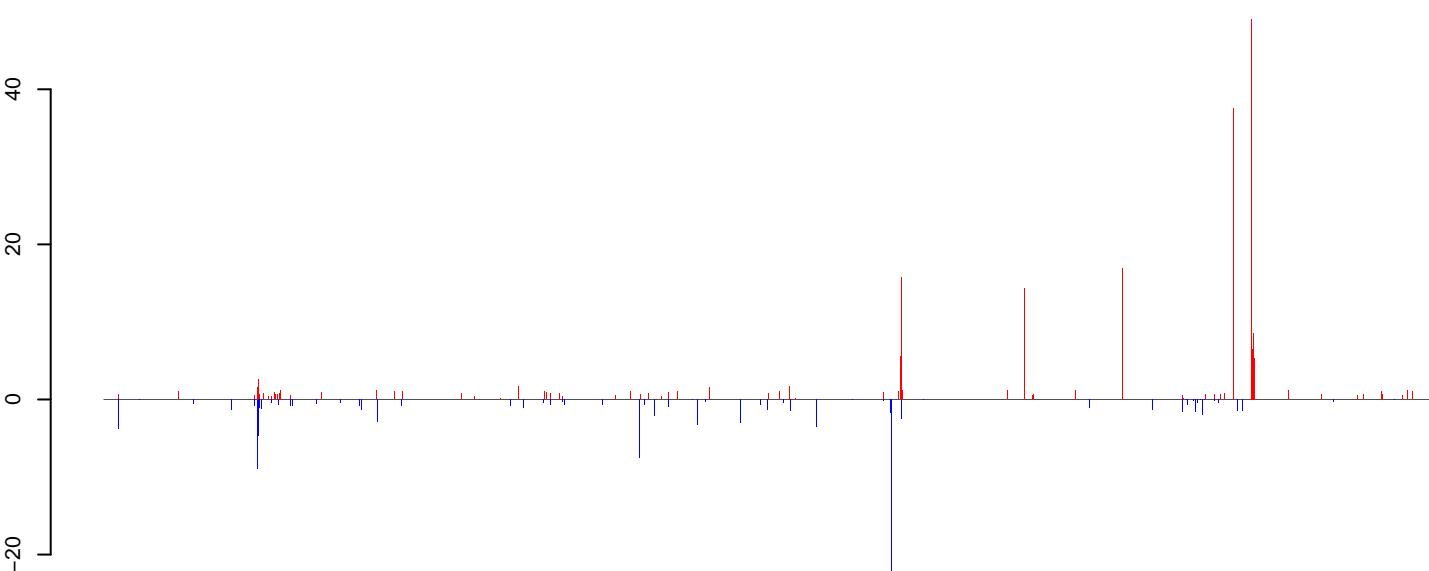
positive=142, negative=62, total=204

CuQuin_SG_14dpi3.24_35.rep



positive=212, negative=68, total=280

CuQuin_SG_14dpi3.rep

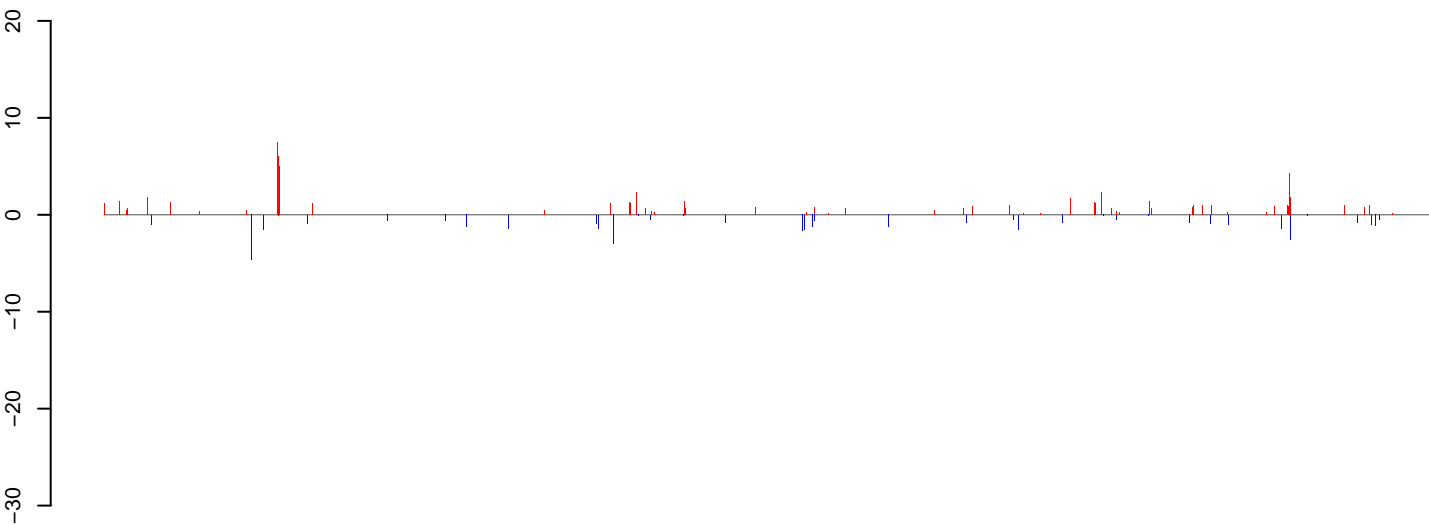


positive=354, negative=130, total=484

Window size=25, length=1211929, Wolbachia@Wolbachia_wVitA:1-1211929

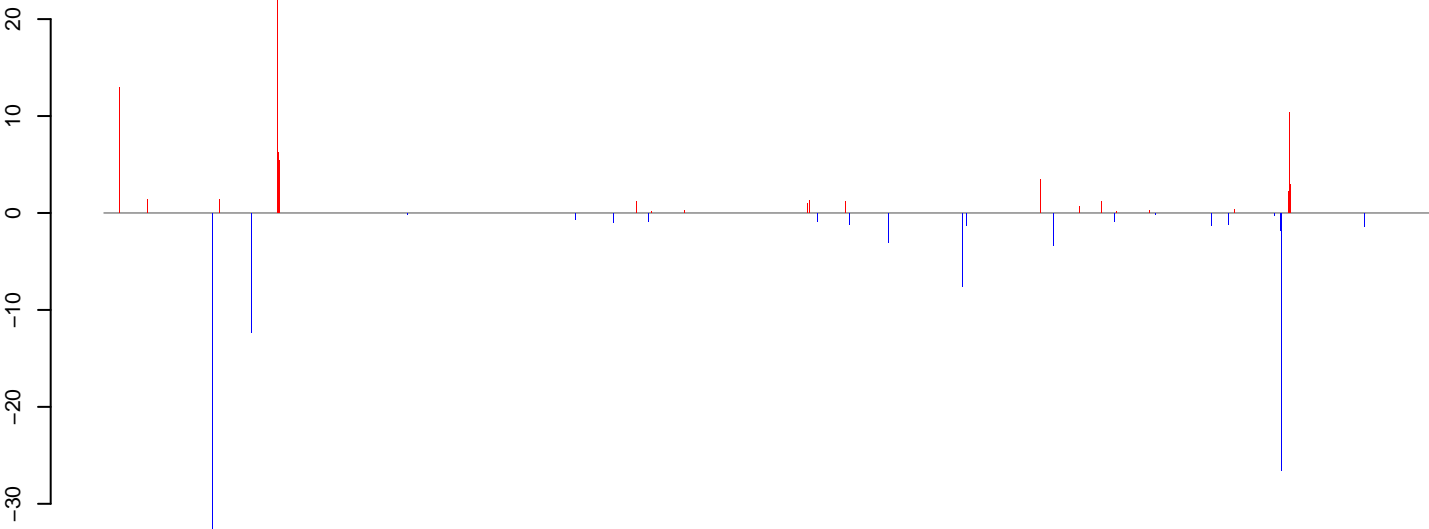
0 200000 400000 600000 800000 1000000 1200000

CuQuin_SG_14dpi3.18_23.rep



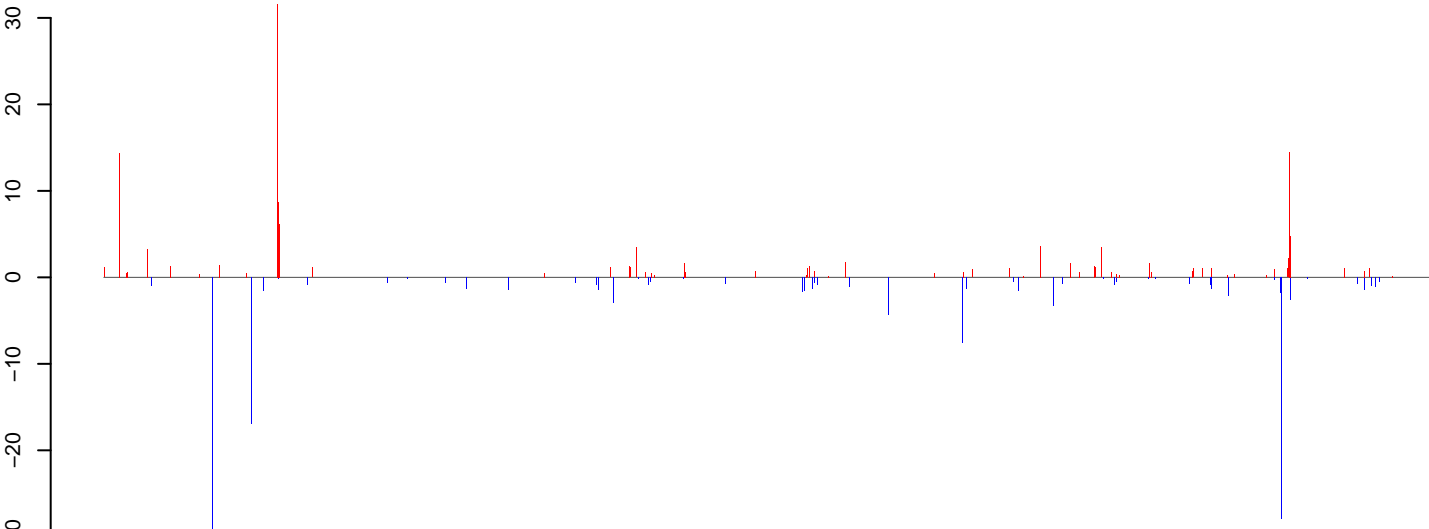
positive=136, negative=44, total=179

CuQuin_SG_14dpi3.24_35.rep



positive=167, negative=106, total=273

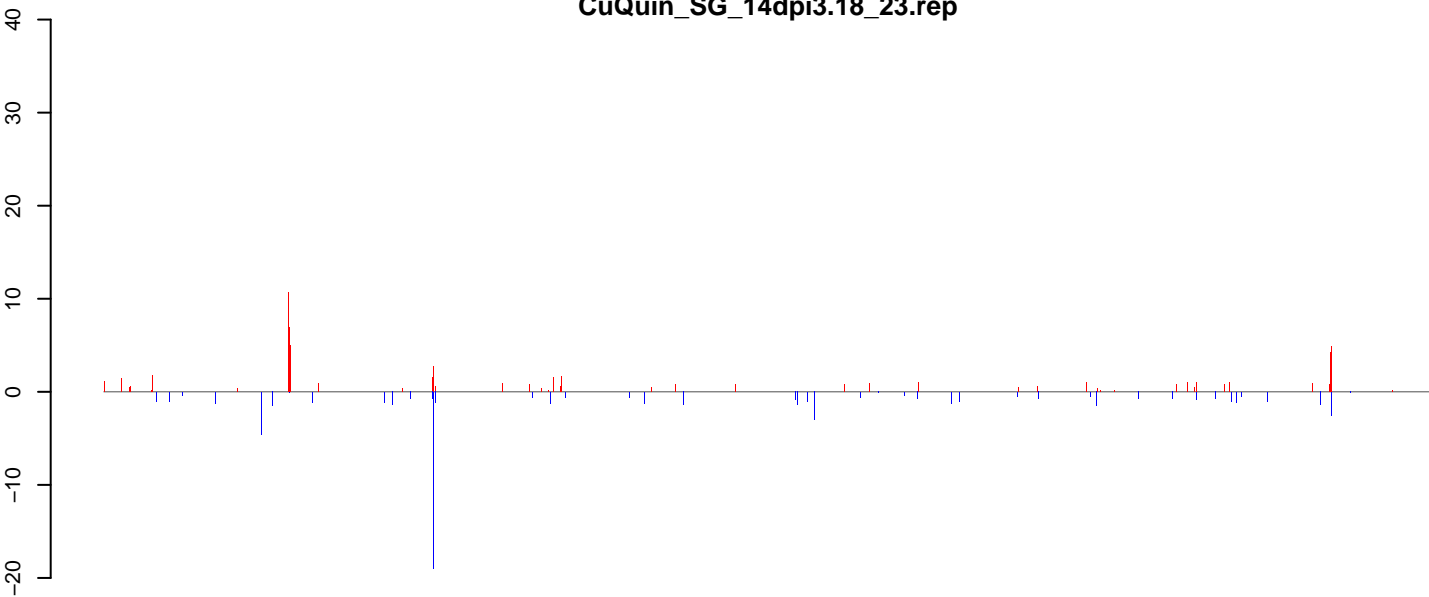
CuQuin_SG_14dpi3.rep



positive=303, negative=149, total=452

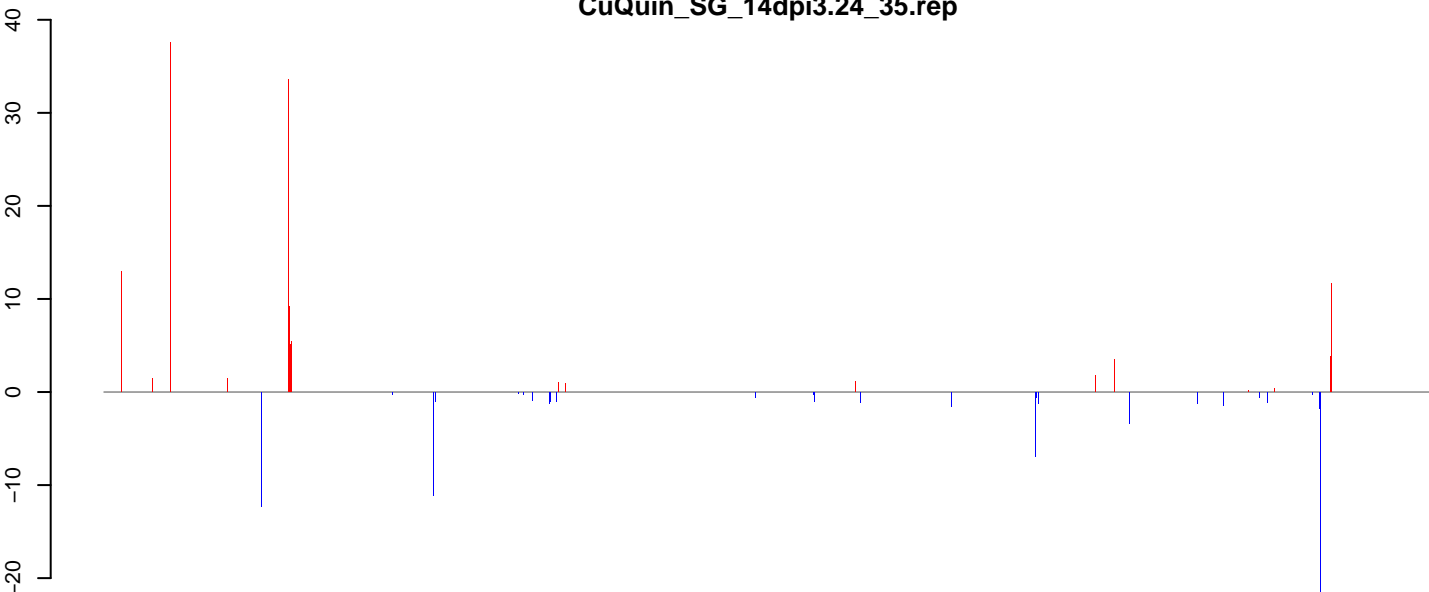
Window size=25, length=1445873, Wolbachia@Wolbachia_wRi:1-1445873

CuQuin_SG_14dpi3.18_23.rep



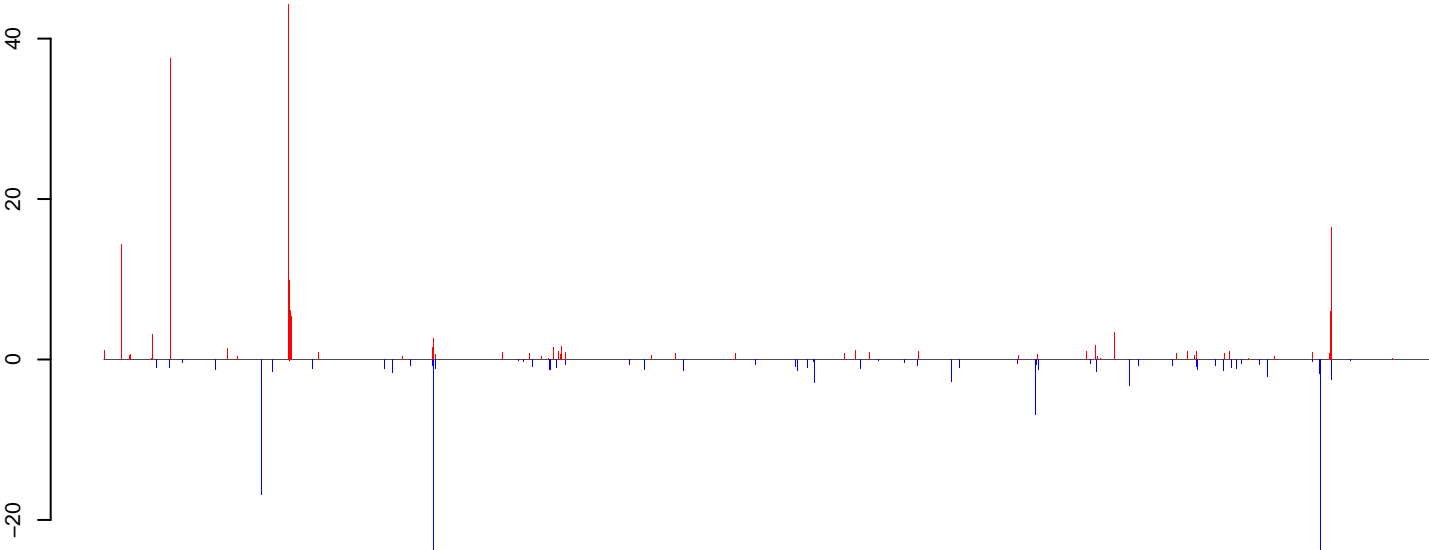
positive=127, negative=72, total=199

CuQuin_SG_14dpi3.24_35.rep



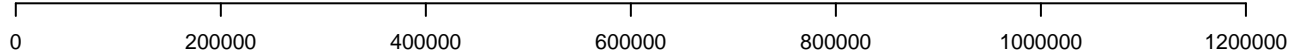
positive=199, negative=85, total=283

CuQuin_SG_14dpi3.rep

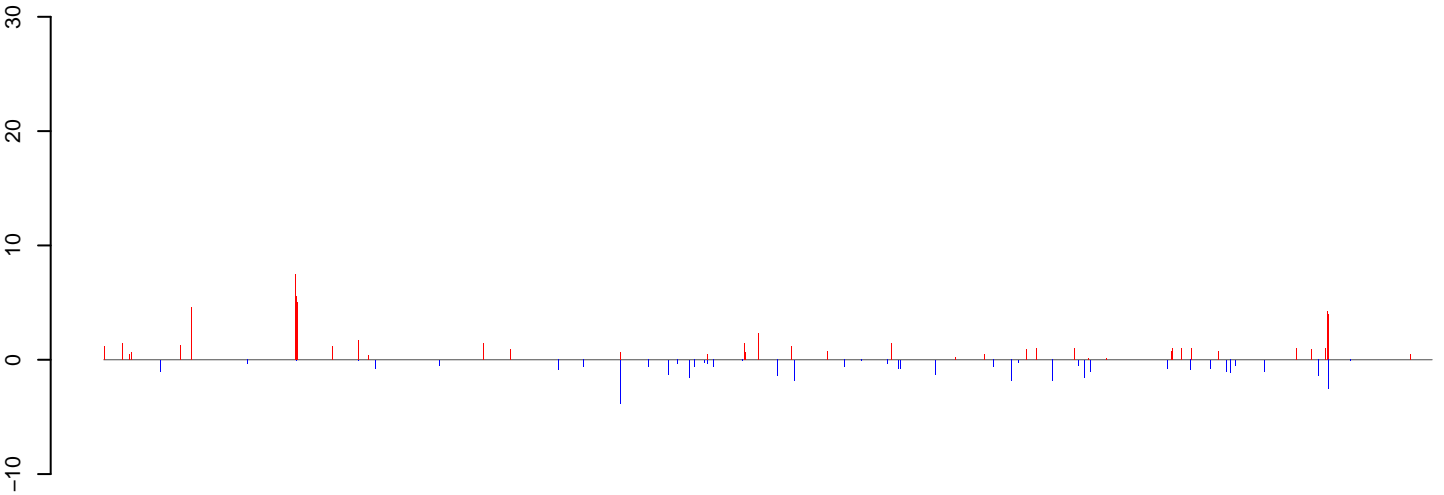


positive=325, negative=157, total=482

Window size=25, length=1295804, Wolbachia@Wolbachia_wSim_wHa:1-1295804

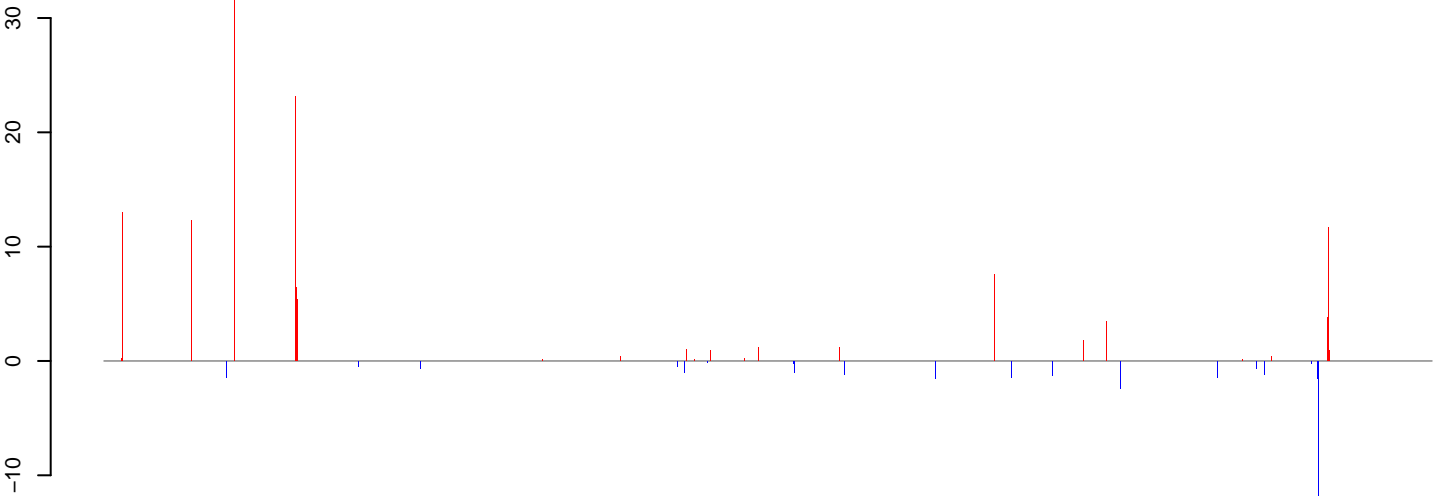


CuQuin_SG_14dpi3.18_23.rep



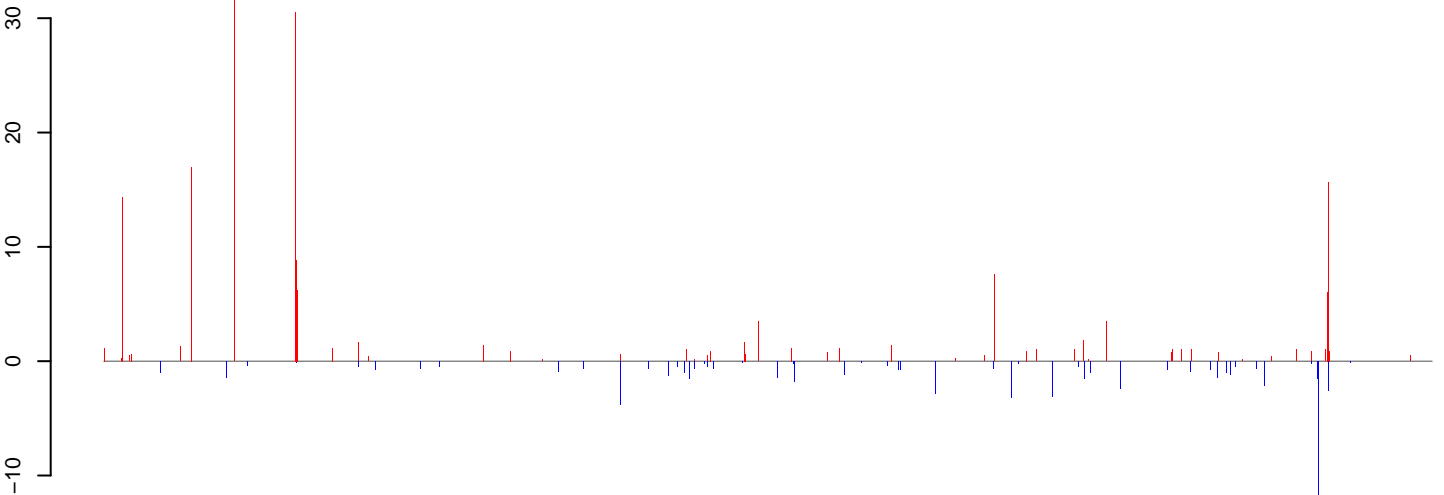
positive=129, negative=40, total=168

CuQuin_SG_14dpi3.24_35.rep



positive=218, negative=50, total=267

CuQuin_SG_14dpi3.rep

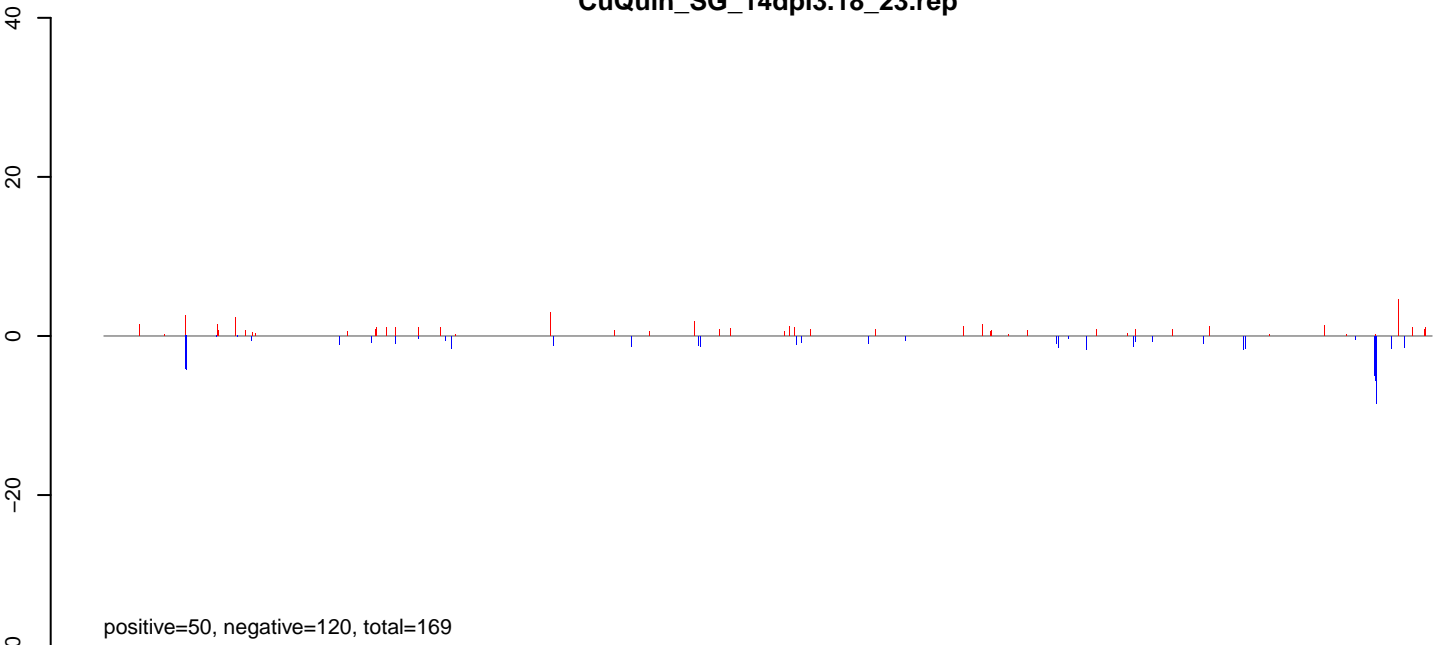


positive=346, negative=89, total=436

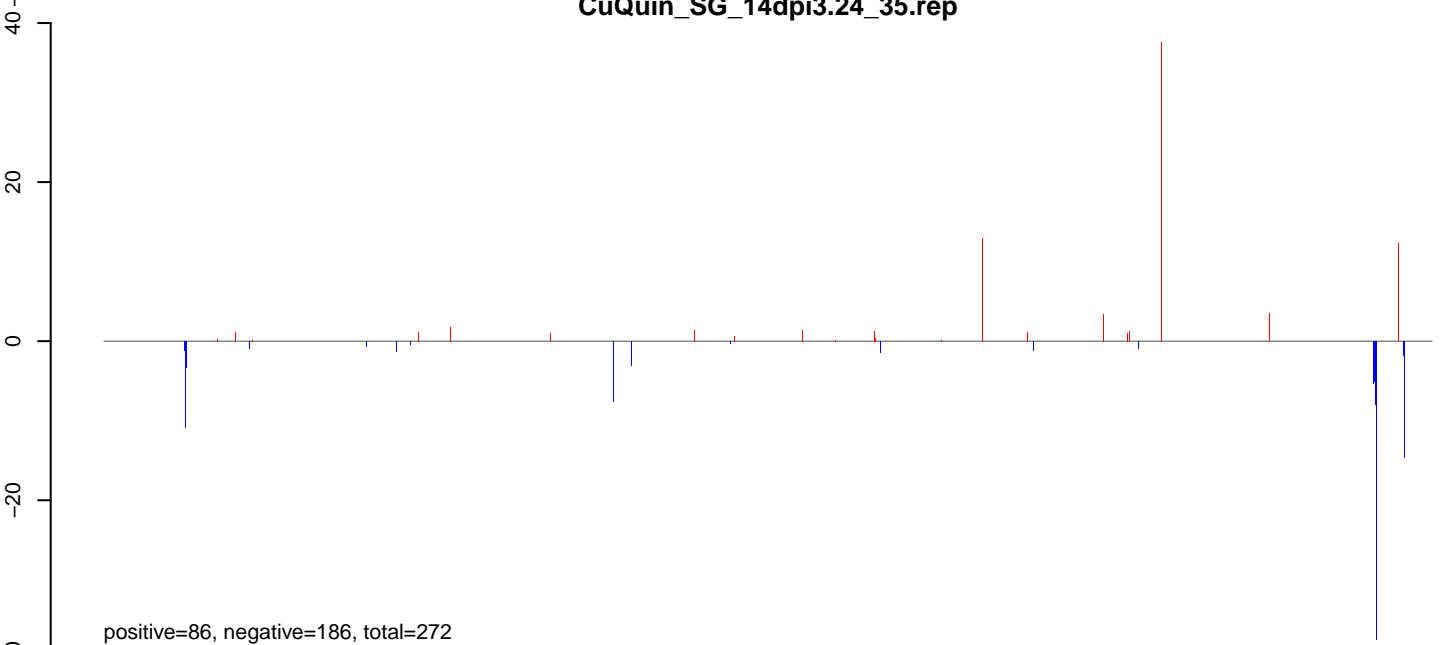
Window size=25, length=1267782, Wolbachia@Wolbachia_wMel:1-1267782

0 200000 400000 600000 800000 1000000 1200000

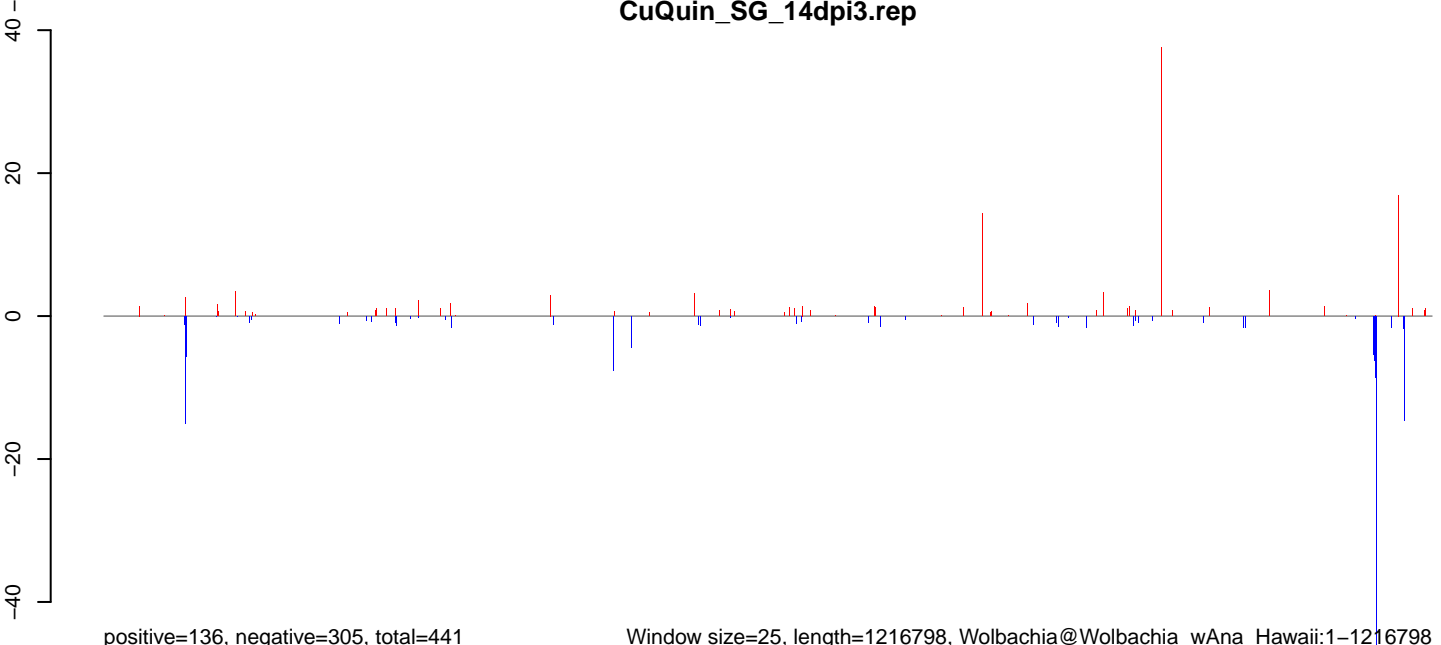
CuQuin_SG_14dpi3.18_23.rep



CuQuin_SG_14dpi3.24_35.rep



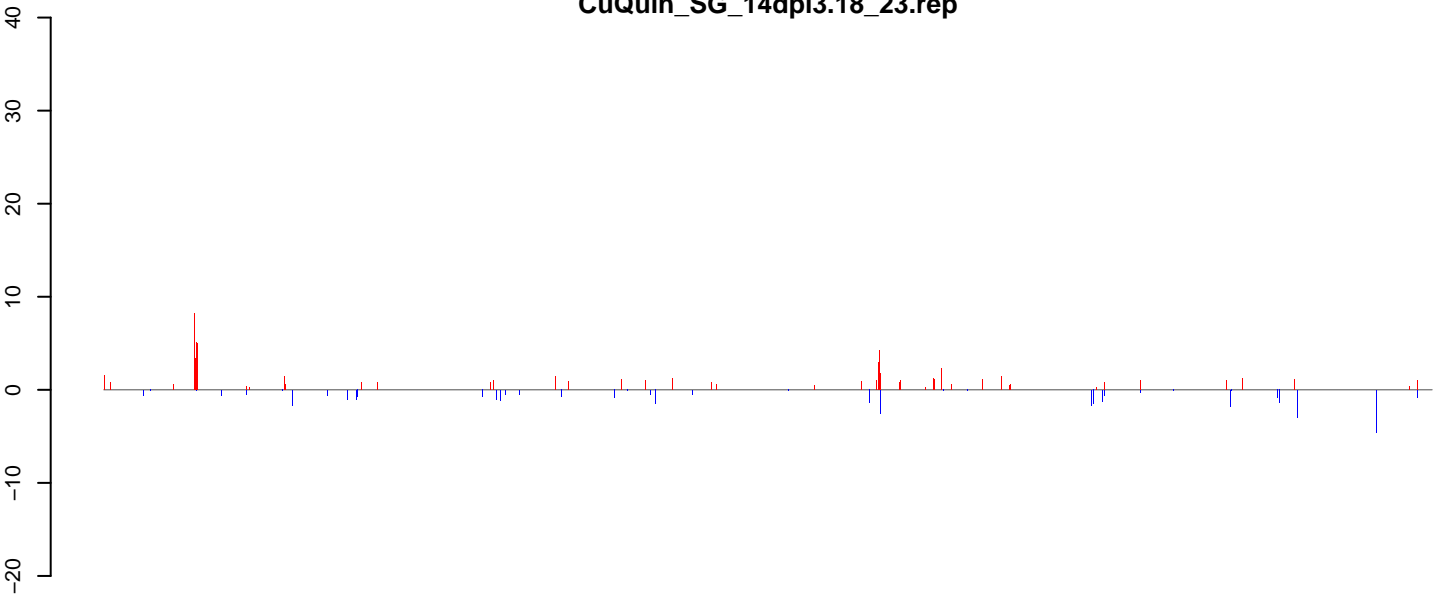
CuQuin_SG_14dpi3.rep



Window size=25, length=1216798, Wolbachia@Wolbachia_wAna_Hawaii:1-1216798

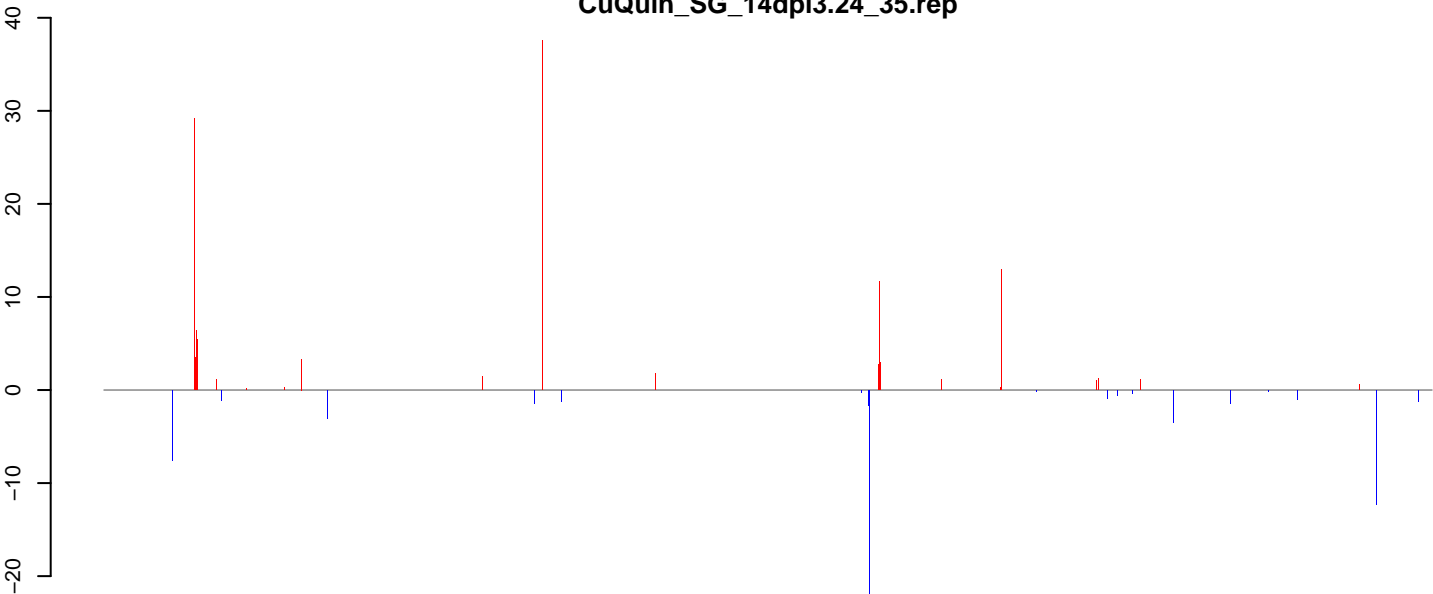
0 200000 400000 600000 800000 1000000 1200000

CuQuin_SG_14dpi3.18_23.rep



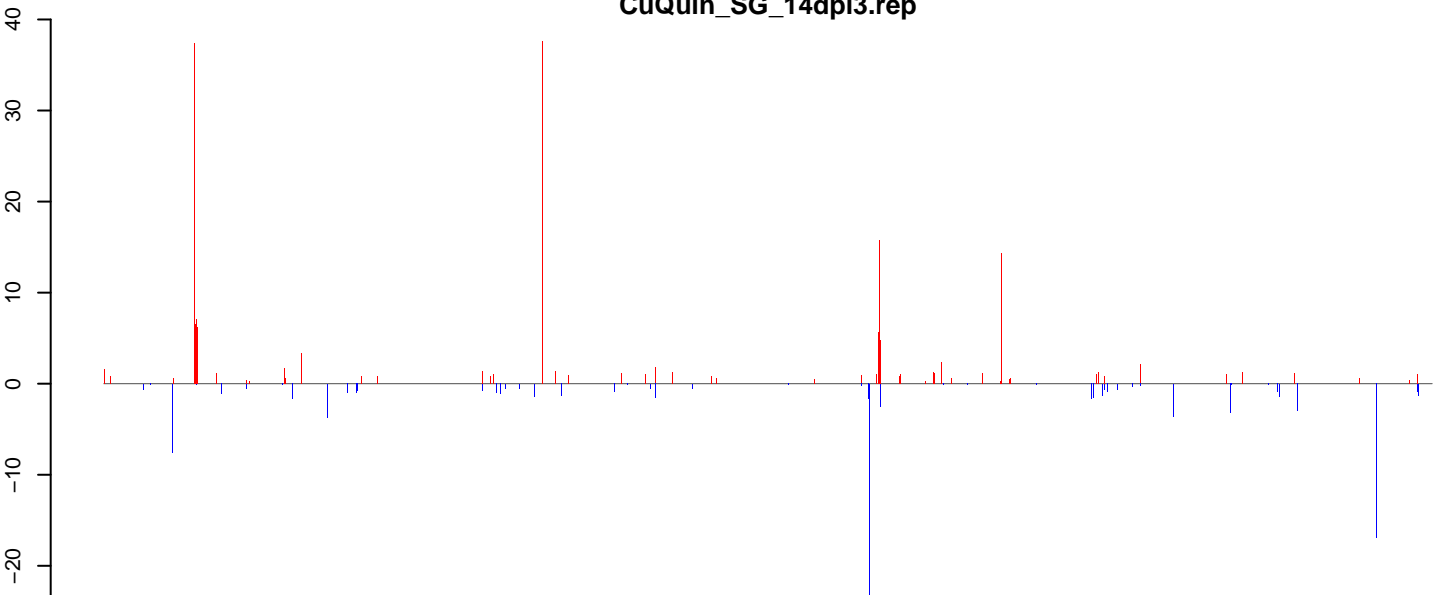
positive=126, negative=42, total=169

CuQuin_SG_14dpi3.24_35.rep



positive=197, negative=65, total=262

CuQuin_SG_14dpi3.rep

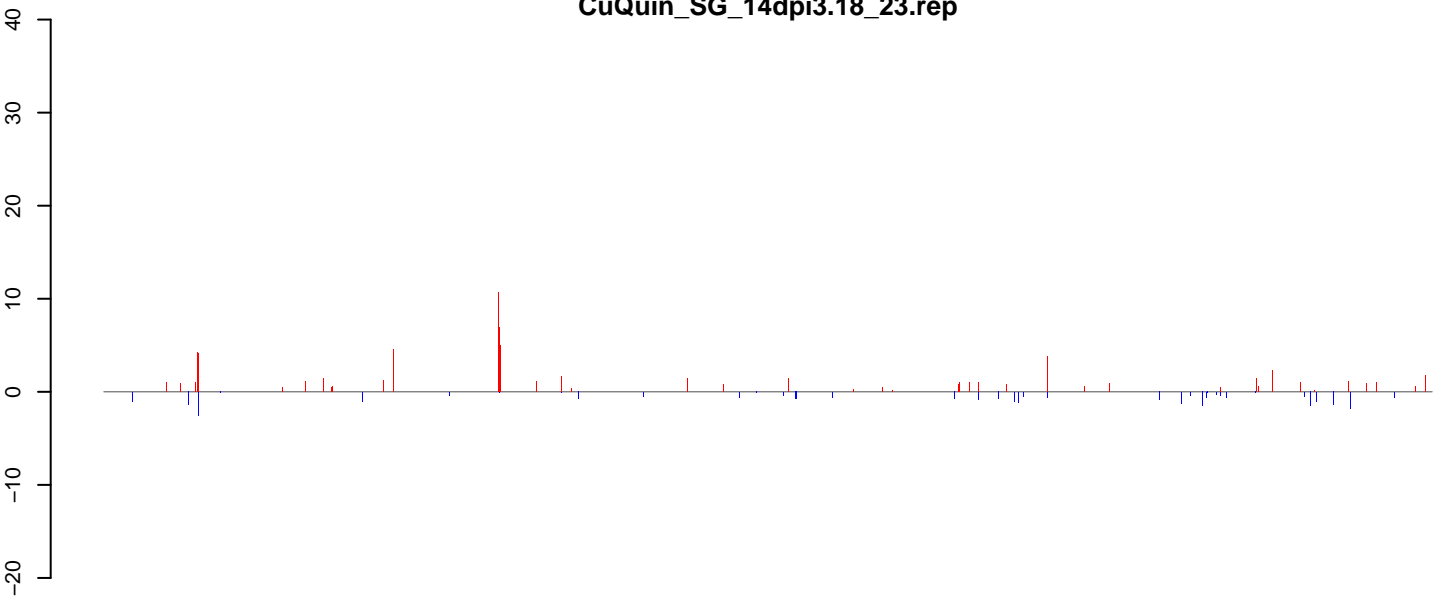


positive=323, negative=108, total=430

Window size=25, length=1236914, Wolbachia@Wolbachia_wAna_India:1-1236914

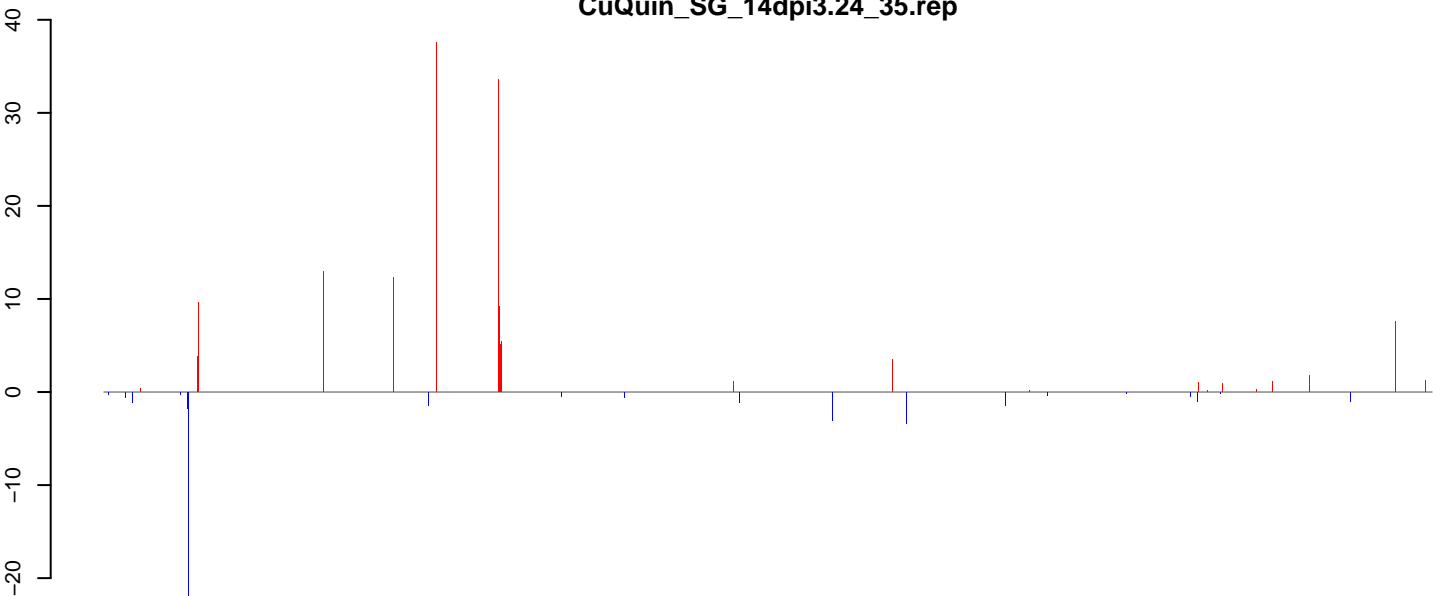
0 200000 400000 600000 800000 1000000 1200000

CuQuin_SG_14dpi3.18_23.rep



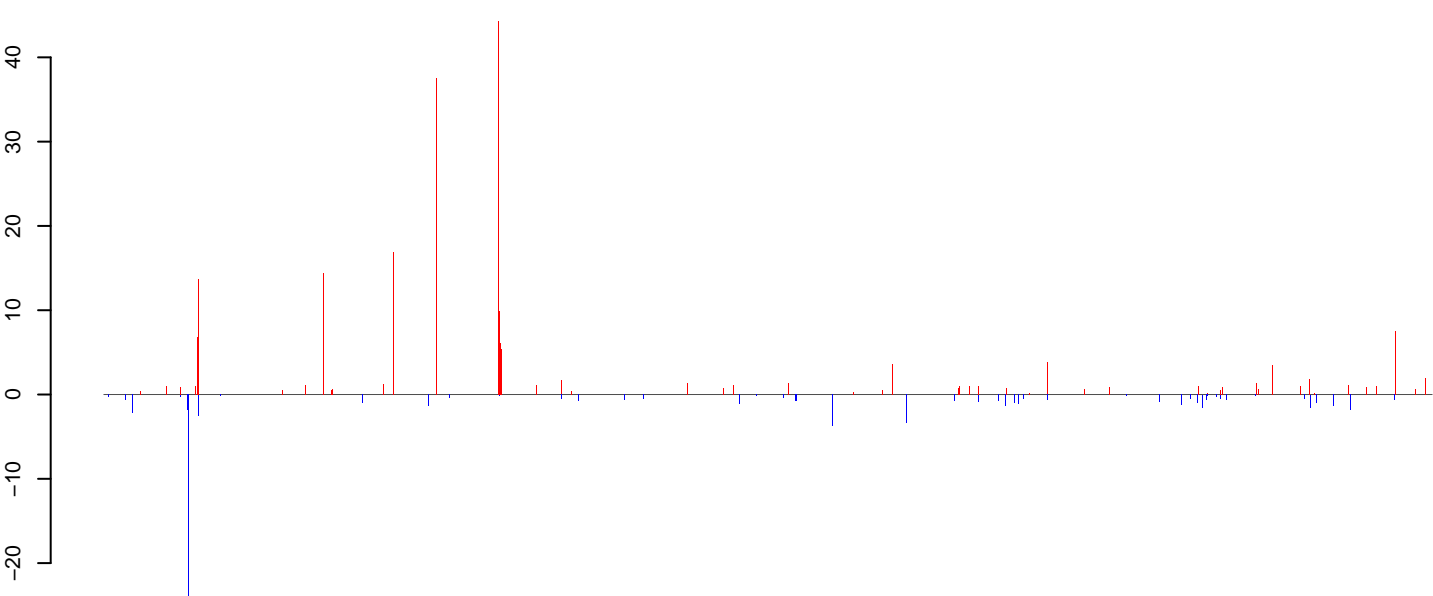
positive=135, negative=32, total=166

CuQuin_SG_14dpi3.24_35.rep



positive=218, negative=47, total=266

CuQuin_SG_14dpi3.rep

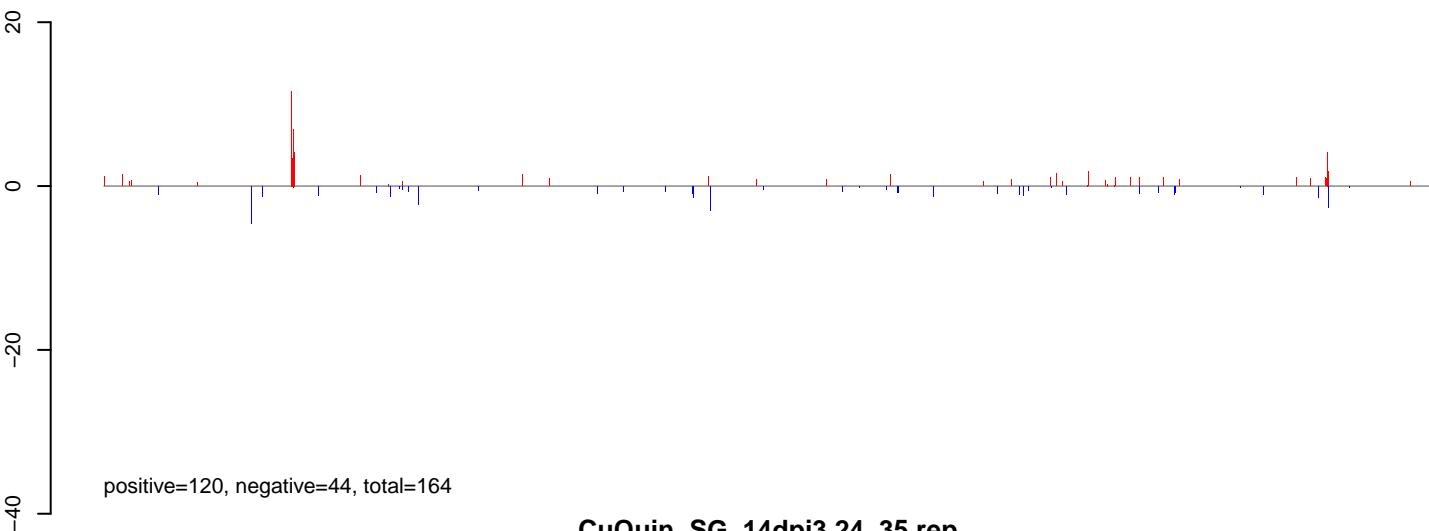


positive=353, negative=79, total=432

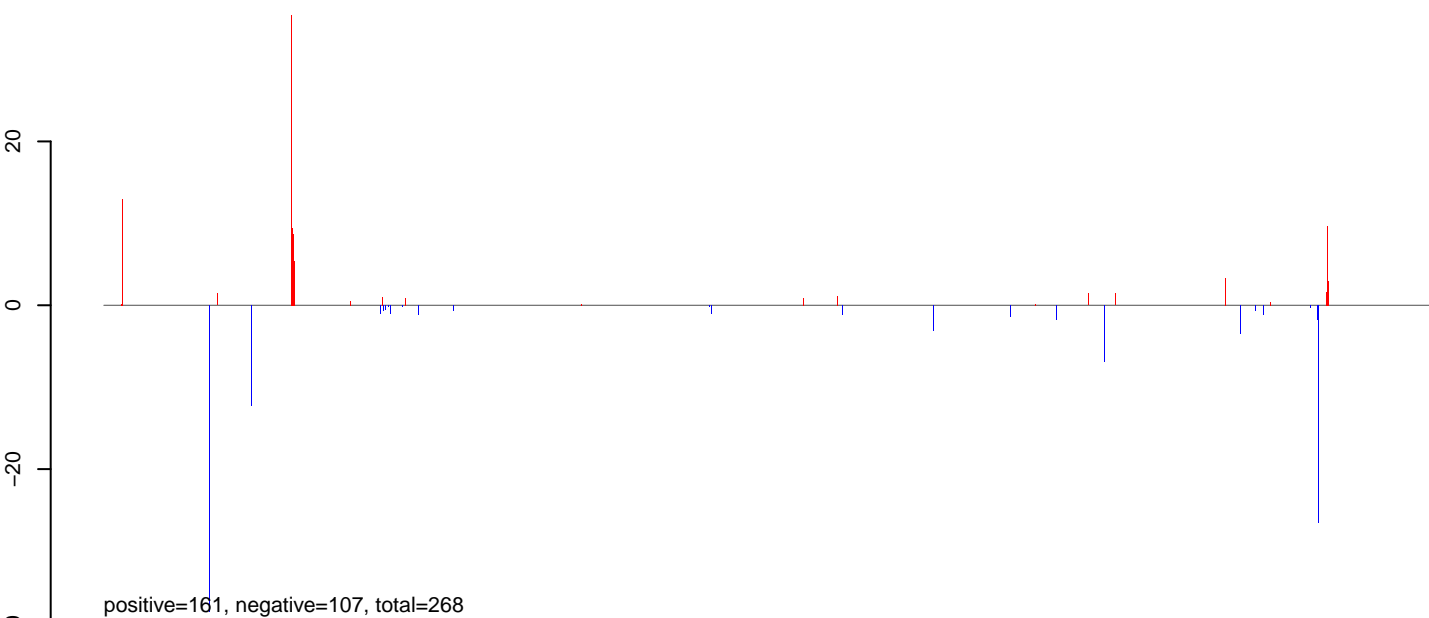
Window size=25, length=1239155, Wolbachia@Wolbachia_wMelPop:1-1239155

0 200000 400000 600000 800000 1000000 1200000

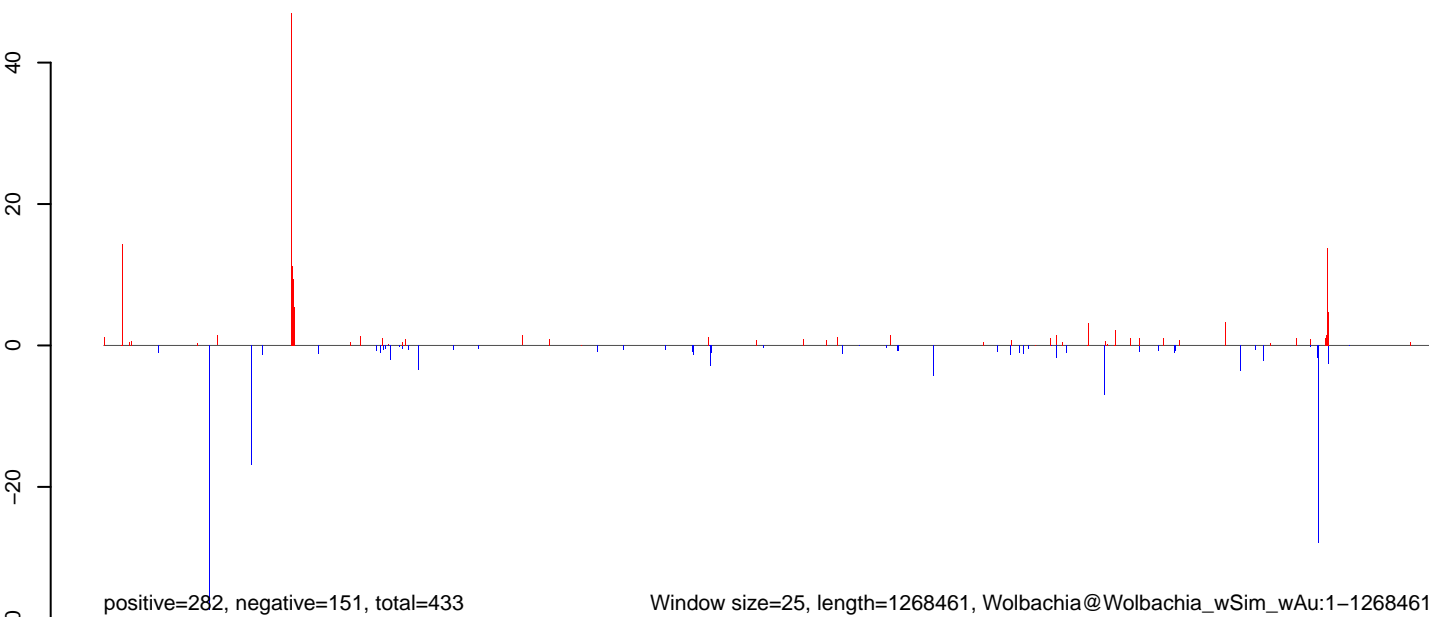
CuQuin_SG_14dpi3.18_23.rep



CuQuin_SG_14dpi3.24_35.rep



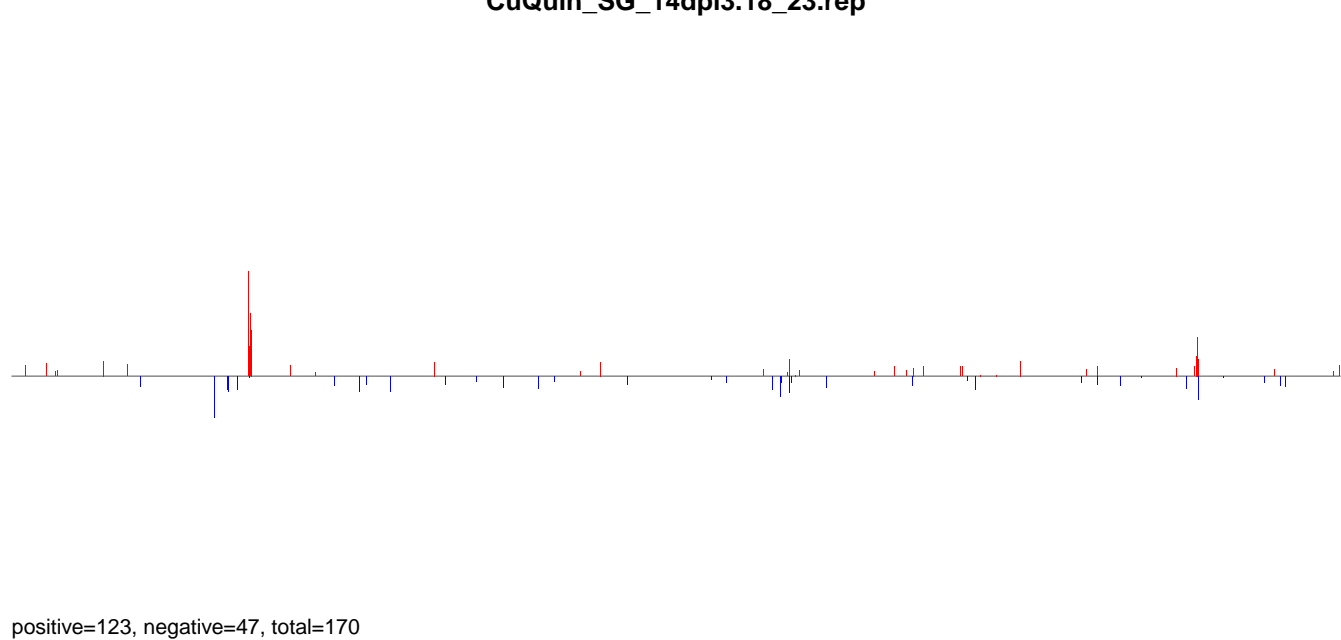
CuQuin_SG_14dpi3.rep



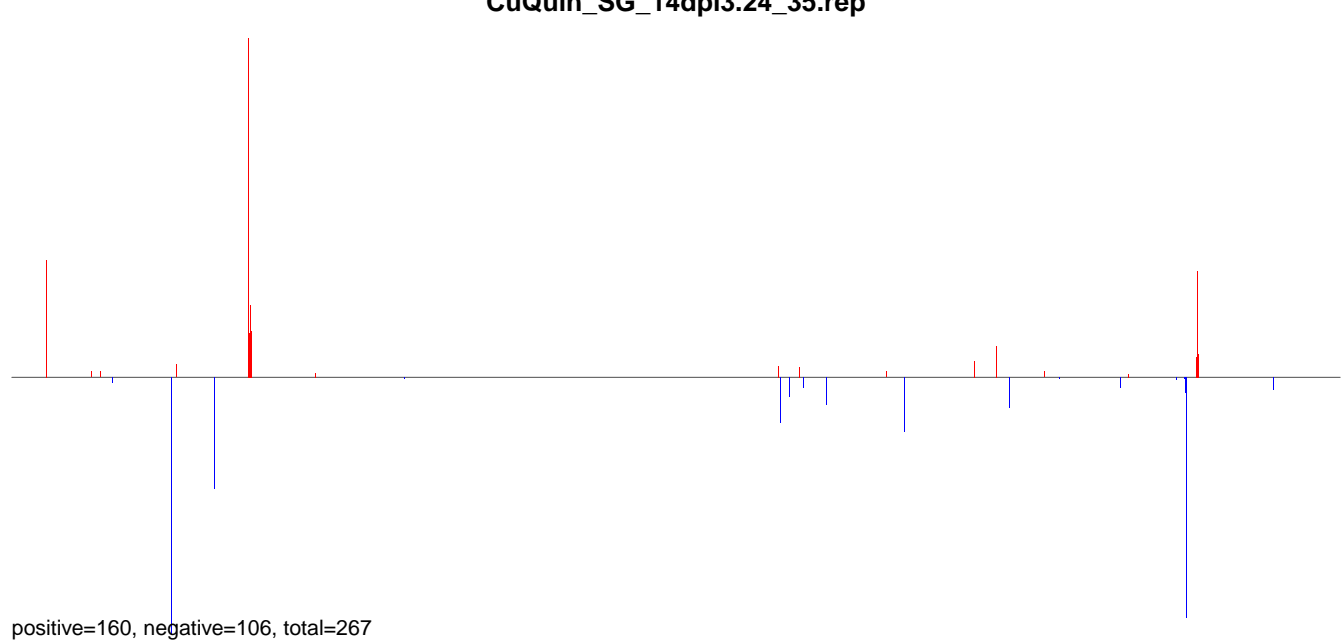
Window size=25, length=1268461, Wolbachia@Wolbachia_wSim_wAu:1-1268461

0 200000 400000 600000 800000 1000000 1200000

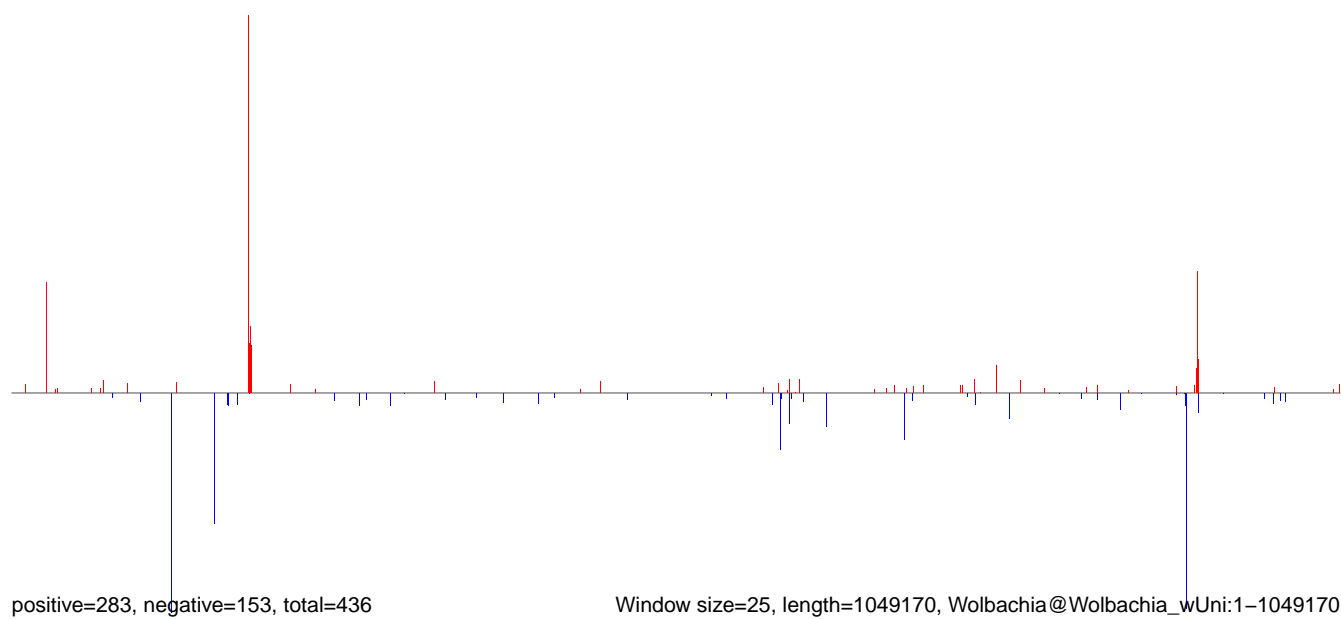
CuQuin_SG_14dpi3.18_23.rep



CuQuin_SG_14dpi3.24_35.rep



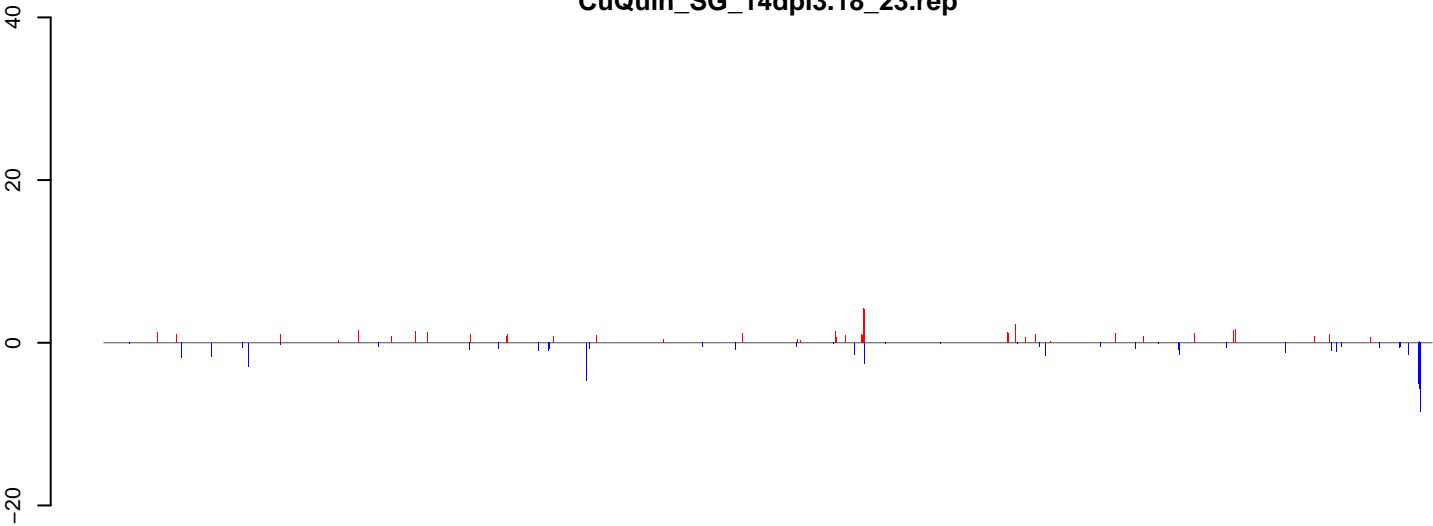
CuQuin_SG_14dpi3.rep



Window size=25, length=1049170, Wolbachia@Wolbachia_wUni:1-1049170

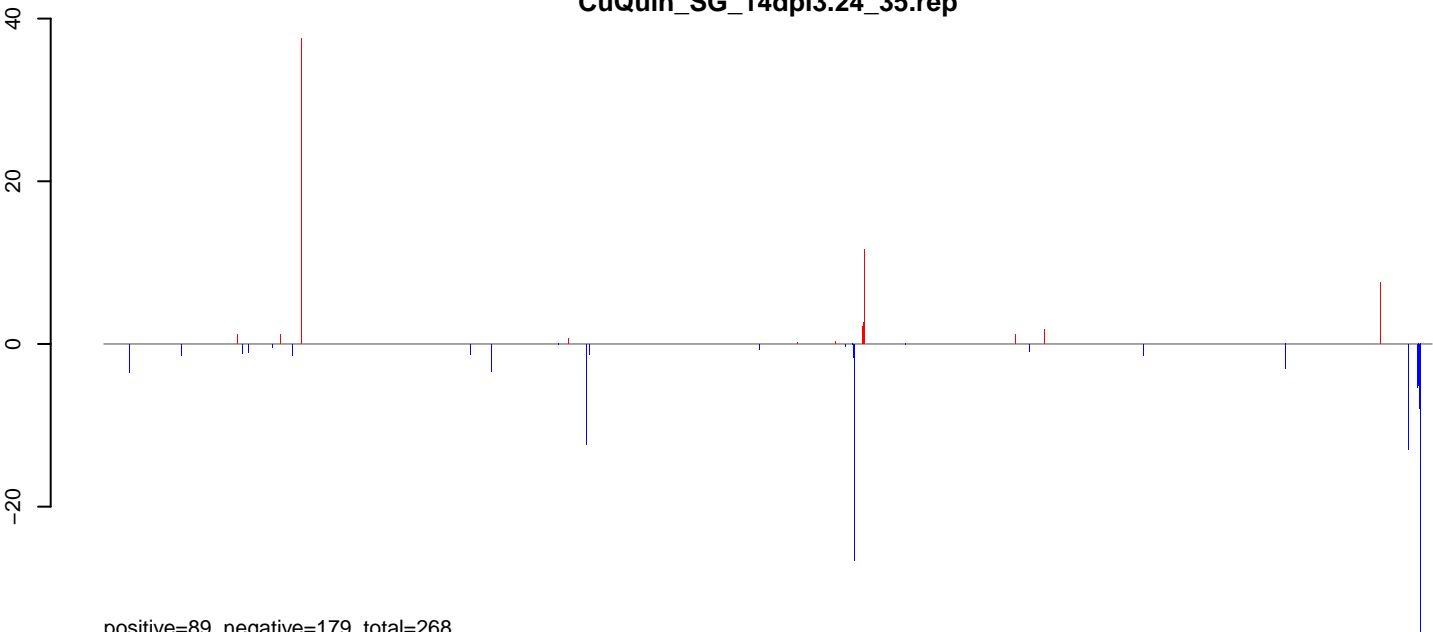
0e+00 2e+05 4e+05 6e+05 8e+05 1e+06

CuQuin_SG_14dpi3.18_23.rep



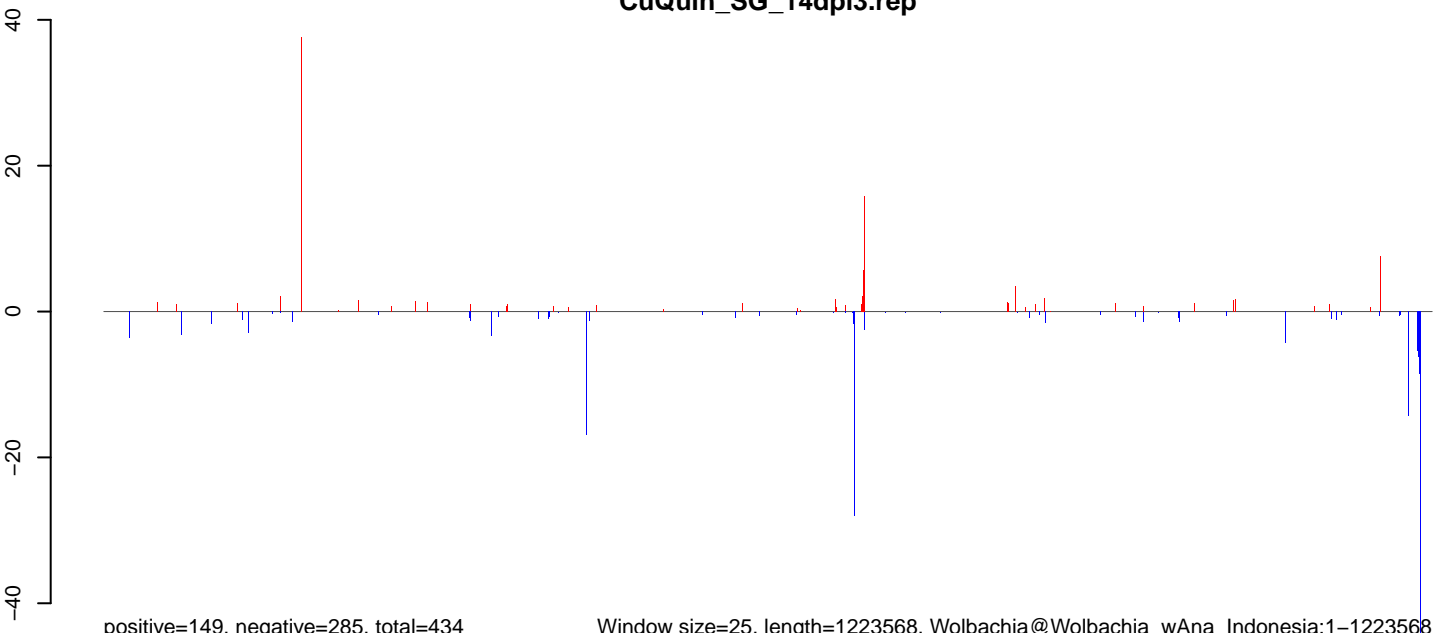
positive=61, negative=106, total=167

CuQuin_SG_14dpi3.24_35.rep



positive=89, negative=179, total=268

CuQuin_SG_14dpi3.rep

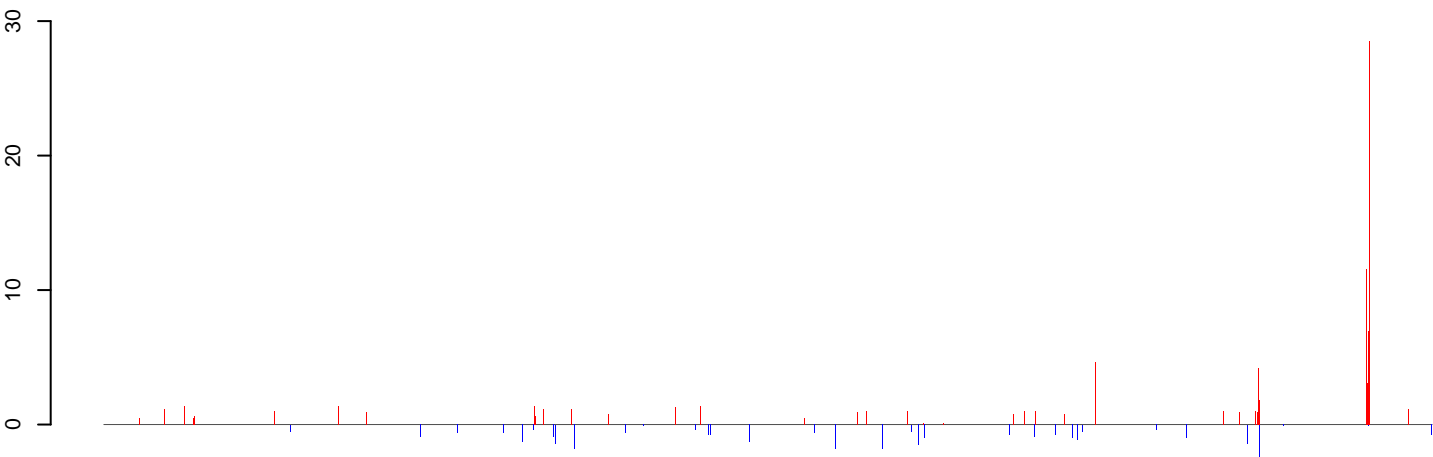


positive=149, negative=285, total=434

Window size=25, length=1223568, Wolbachia@Wolbachia_wAna_Indonesia:1-1223568

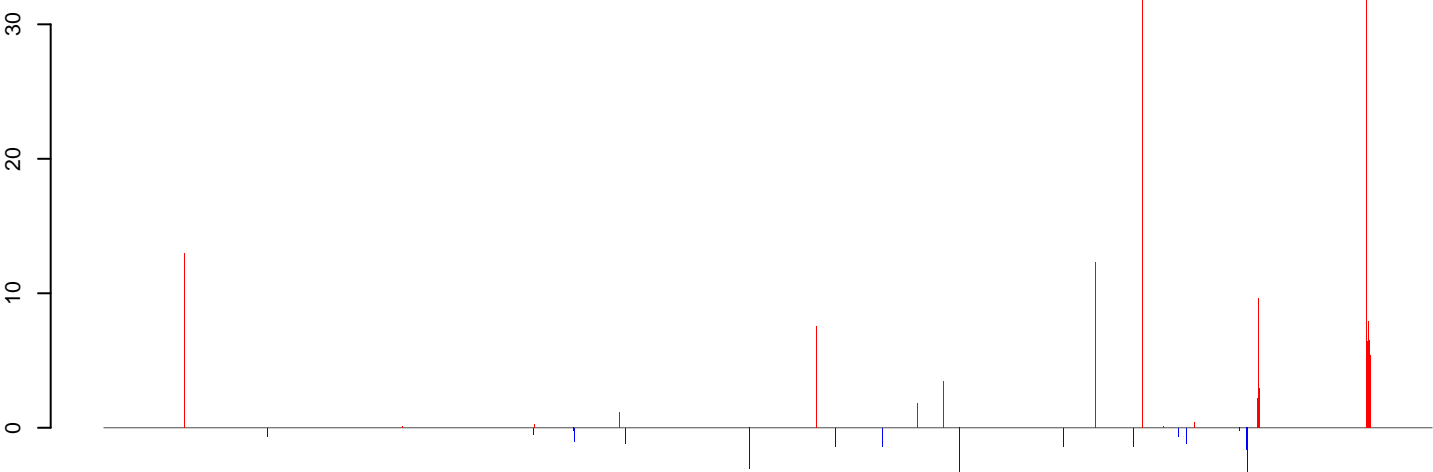
0 200000 400000 600000 800000 1000000 1200000

CuQuin_SG_14dpi3.18_23.rep



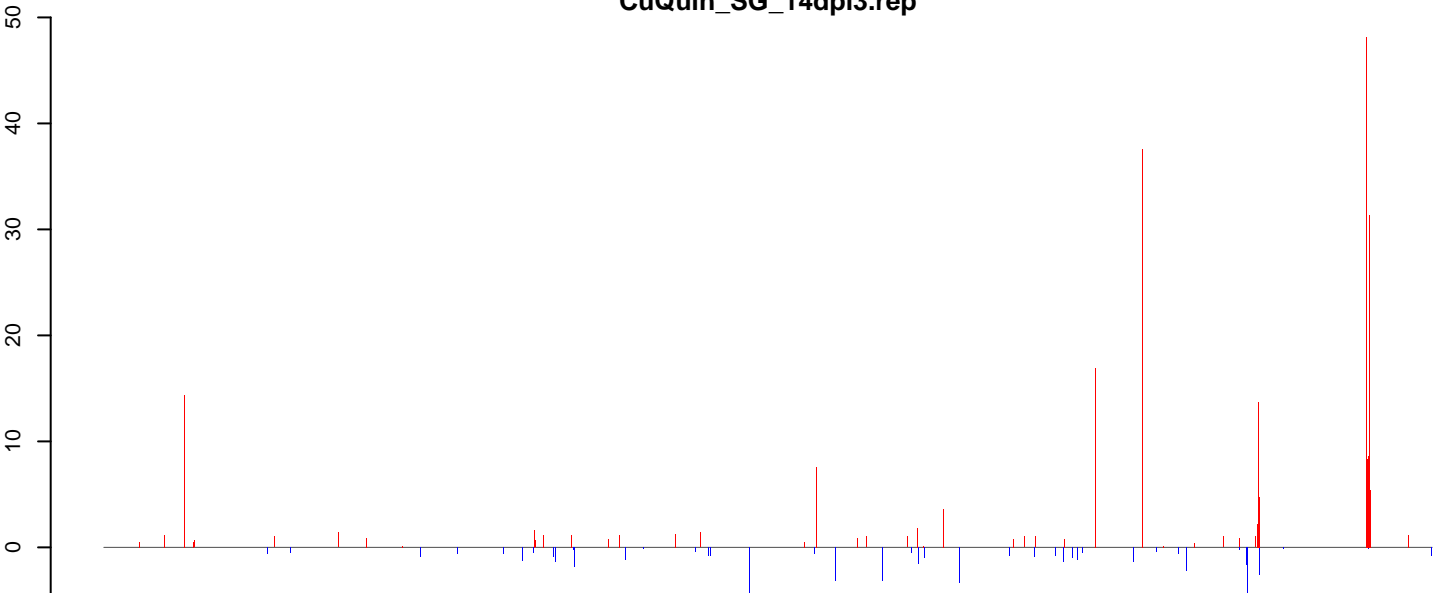
positive=162, negative=34, total=196

CuQuin_SG_14dpi3.24_35.rep



positive=222, negative=28, total=250

CuQuin_SG_14dpi3.rep

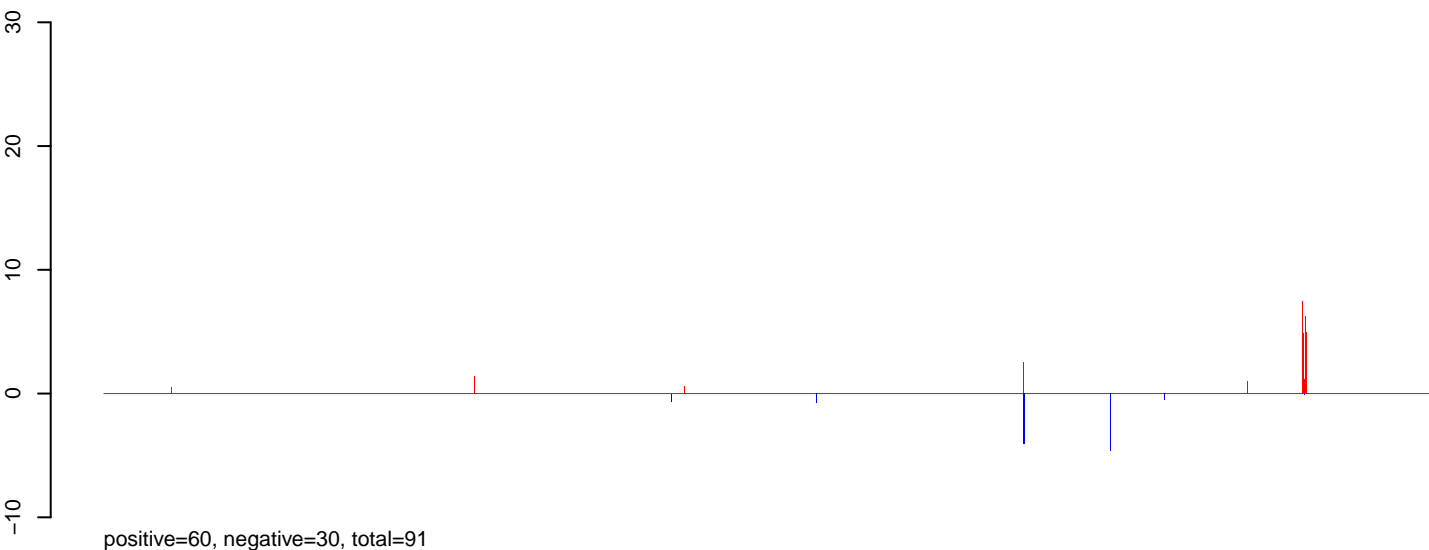


positive=384, negative=63, total=447

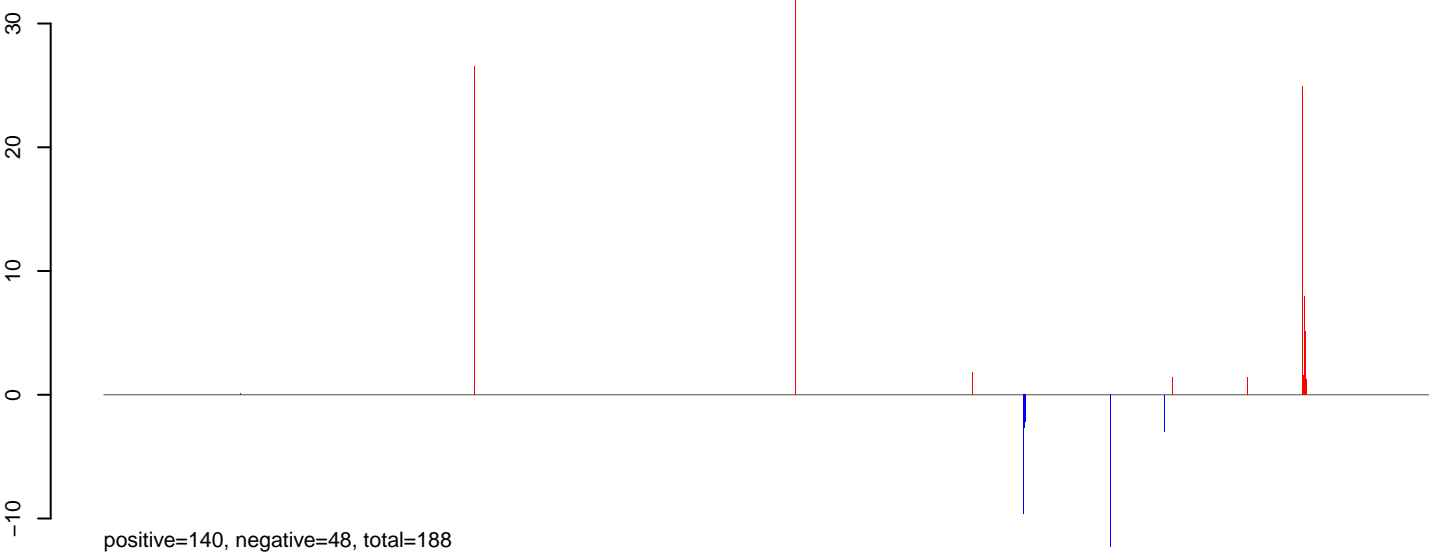
Window size=25, length=1126656, Wolbachia@Wolbachia_wRec:1-1126656

0e+00 2e+05 4e+05 6e+05 8e+05 1e+06

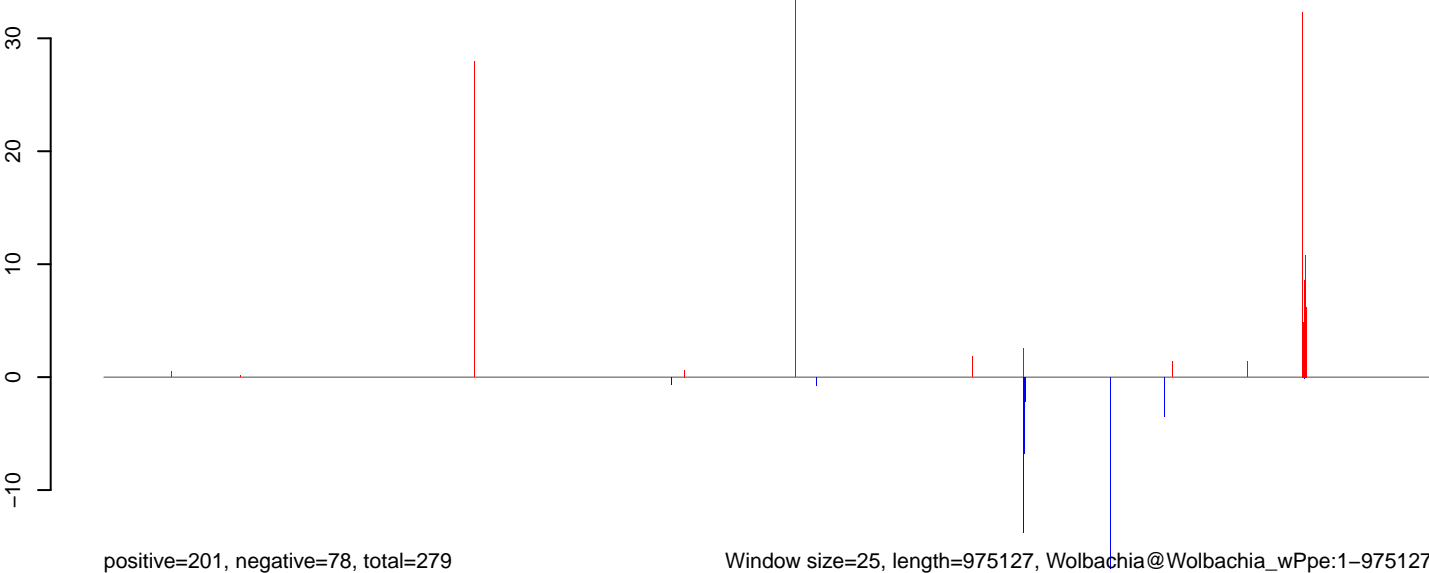
CuQuin_SG_14dpi3.18_23.rep



CuQuin_SG_14dpi3.24_35.rep



CuQuin_SG_14dpi3.rep



Window size=25, length=975127, Wolbachia@Wolbachia_wPpe:1-975127

0e+00 2e+05 4e+05 6e+05 8e+05 1e+06